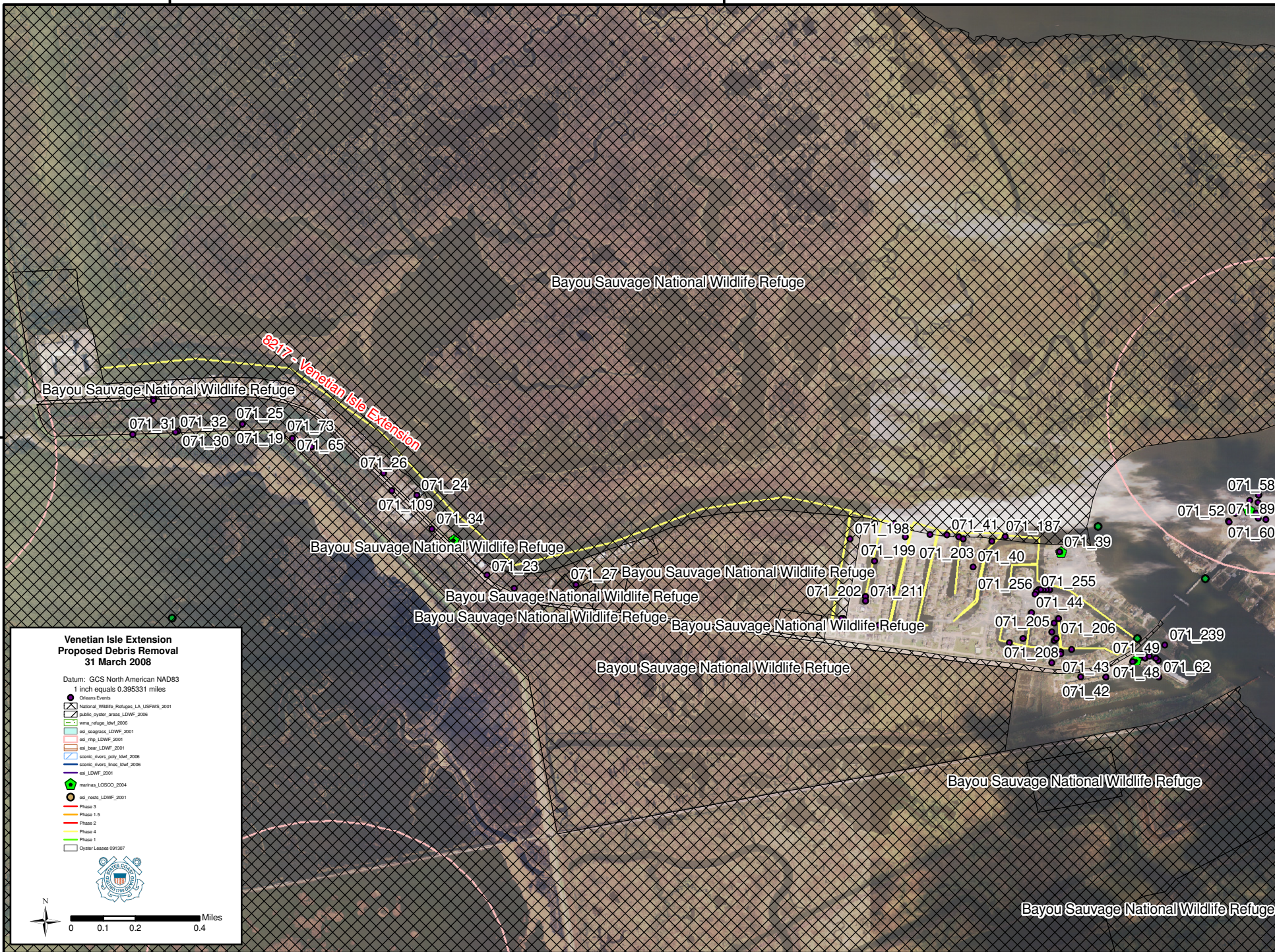


89°51'0"W

89°49'30"W

30°4'30"N


30°4'30"N



**Venetian Isle Extension  
Proposed Debris Removal  
31 March 2008**

Datum: GCS North American NAD83  
1 inch equals 0.395331 miles

- Oceans Events
- ▨ National Wetlands Database, LA USFWS, 2001
- ▨ public\_cystic\_areas\_LDWF\_2006
- ▨ wms\_refuge\_start\_2006
- ▨ est\_reapass\_LDWF\_2001
- ▨ est\_rrip\_LDWF\_2001
- ▨ est\_sbar\_LDWF\_2001
- ▨ scenic\_finers\_poly\_klaf\_2006
- ▨ scenic\_finers\_lines\_klaf\_2006
- ▨ est\_LDWF\_2001
- ▨ marshes\_LOSOCO\_2004
- ▨ est\_needs\_LDWF\_2001
- Phase 3
- Phase 1.5
- Phase 2
- Phase 4
- Phase 1
- ▨ Oyster Leases 091307



0 0.1 0.2 0.4 Miles

89°51'0"W

89°49'30"W

Bayou Sauvage National Wildlife Refuge