



U.S. Department
of Homeland Security
**United States
Coast Guard**

LOCAL NOTICE TO MARINERS

District: 9

Week: 16/08

Issued by: Commander (dpw)
Ninth Coast Guard District
1240 East Ninth Street,
Cleveland, OH 44199-2060
Telephone: (216) 902-6074

Direct questions about this LNM to the above address.

District Nine Internet Address <http://www.uscg.mil/d9/uscgd9.html>

** Navigation Information Service watchstander, 24 hours a day at (703) 313-5900 ** **Internet Address** <http://www.navcen.uscg.gov/>

Light List Reference: Commandant Publication P16502.7, VOL VII, 2007 Edition

Coast Pilot Reference: 2007 U.S. Coast Pilot 6 Great Lakes 35th Edition

Coast Pilot Corrections Reference download web page: <http://nauticalcharts.noaa.gov/ncd/cpdownload.htm>

The Local Notice to Mariners is available on the Internet at <http://www.navcen.uscg.gov/lnm/d9/default.htm>. You will also have links to other government agencies- web pages including the US Army Corps of Engineers and the National Ocean Service.

REPORT DISCREPANCIES IN AIDS TO NAVIGATION TO THE NEAREST COAST GUARD UNIT

The Ninth District and all Sector offices for their areas of responsibility issue a BROADCAST NOTICE TO MARINERS.

The following Broadcast Notice to Mariners have been incorporated into this week's Local Notice to Mariners:

Sector Buffalo, NY - B013-08 through B015-08

Ninth District - C036-08 through C042-08

Sector Detroit, MI - D029-08 through D033-08

Sector Lake Michigan, WI - M114-08 through M124-08

Sector Sault Ste Marie, MI - S061-08 through S070-08

ABBREVIATIONS

A through I

ACOE - Army Corps of Engineers
ADRIFT - Buoy Adrift
AICW - Atlantic Intracoastal Waterway
B - Buoy
BKW - Breakwater
B - Refer to Light List
BNM - Broadcast Notice to Mariner
CG - Refer to Light List
CHAN - Channel
CGD - Coast Guard District
CR - Refer to Light List
C/O - Cut Off
CONT - Contour
CONSTR - Construction
CRK - Creek
CONST - Construction
DBN - Daybeacon
DBD/DAYBD - Dayboard
DBN/DEST - Daybeacon Destroyed
DBN IMCH - Daybeacon Improper
Characteristic
DISCON - Discontinued
DMGD - Daybeacon Damaged
EST - Established Aid
EVAL - Evaluation
EXT - Extinguished
FL - Flashing
FS - Fog Signal

K through M

KBG - Refer to Light List
KBG-I - Refer to Light List
KBR - Refer to Light List
KBR-I - Refer to Light List
KBW - Refer to Light List
KGB - Refer to Light List
KGB-I - Refer to Light List
KGR - Refer to Light List
KGR-I - Refer to Light List
KGW - Refer to Light List
KGW-I - Refer to Light List
KRB - Refer to Light List
KRB-I - Refer to Light List
KRG - Refer to Light List
KRG-I - Refer to Light List
KRW - Refer to Light List
KWB - Refer to Light List
KWB-I - Refer to Light List
KWG - Refer to Light List
KWG-I - Refer to Light List
KWR - Refer to Light List
KWR-I - Refer to Light List
LAT - Latitude
LB - Lighted Buoy
LBB - Lighted Bell Buoy
LHB - Lighted Horn Buoy
LGB - Lighted Gong Buoy
LONG - Longitude

N through Z

NB - Refer to Light List
N/C - Not Charted
ND - Refer to Light List
NG - Refer to Light List
NGA - National Geospatial-Intelligence Agency
NL - Refer to Light List
NO - Number
NOS - National Ocean Service
NR - Refer to Light List
NW - Refer to Light List
NW - Notice Writer
NY - Refer to Light List
OBSCU - Obscured
OBST - Obstruction
OFF STA - Off Station
OBSTR - Obstruction
PRIV - Private Aid
RBN - Radio Beacon
REBUILT - Aid Rebuilt
RECOVERED - Aid Recovered
RED - Red Buoy
REDINT - Reduced Intensity
RRL - Range Rear Light
RELIGHTED - Aid Relighted
RELOC - Relocated
RESET ON STATION - Aid Reset on Station
RFL - Range Front Light
RIV - River

HAZ - Hazard to Navigation
HBR - Harbor
HOR - Horizontal Clearance
HT - Height
ICW - Intracoastal Waterway
IMCH - Improper Characteristic
INL - Inlet
INOP - Not Operating
INT - Intensity
ISL - Islet

LNM - Local Notice to Mariners
LT - Light
LT CONT - Light Continuous
LWB - Lighted Whistle Buoy
LWP - Left Watching Properly
MISS - Missing
MR - Refer to Light List
MR-I - Refer to Light List

SEC - Section
SG - Green Square
SG-SY - Green Square with Yellow Square
SHL - Shoaling
SND - Sound
SS - Sound Signal
TEMP - Temporary Aid Change
TMK - Topmark
St M - Statute Mile
TR - Red Triangle
TRLB - Temporarily Replaced by Lighted Buoy
TRLT - Temporarily Replaced by Light
TR-TY - Red Triangle with Yellow Triangle
TRUB - Temporarily Replaced by Unlighted Buoy

Additional Abbreviations Specific to this LNM Edition:

DMGD - Damaged
MSLD SIG - Misleading Signal
REDUCED INT DAY - Burning During the Day
SS - Sound Signal

SECTION I - SPECIAL NOTICES

This section contains information of special concern to the Mariner.

USACOE NOTICE TO NAVIGATION INTERESTS

All recent Federal Channels conditions that have conditional surveys can be found can be seen at the USACE Detroit District web site at: <http://www.lre.usace.army.mil/who/operationsofficehomepage/latestnotices/index.cfm?> and <http://www.lre.usace.army.mil/who/operationsofficehomepage/noticetonavigationinterest/>, the USACE Chicago District website at: http://www.lrc.usace.army.mil/co%2Do/Nav_Notice.htm, and the USACE Buffalo District website at: <http://www.lrb.usace.army.mil/>

LNM: 11/07

ST LAWRENCE SEAWAY - NAVIGATION NOTICES

All recent notices that have been created by the St Lawrence Seaway System can be found at the following web addresses: <http://www.greatlakes-seaway.com/en/seaway/index.html>

LNM: 13/07

The Dates of Latest Editions, Nautical Charts and Miscellaneous Maps

The Dates of Latest Editions, Nautical Charts and Miscellaneous Maps, dated October 1, 2007, published by the National Ocean Service, is available for issue. It may be obtained for free by mail from the FAA/National Aeronautical Charting Office, Distribution Division AVN-530, 10201 Good Luck Road, Glenn Dale MD, 20769-9700, by telephone at 1-800-638-8972, or from your local authorized nautical chart sales agent. This is a quarterly publication listing the most recent editions of nautical charts, miscellaneous maps and publications relating to navigation, weather, etc. with brief descriptions and newly updated prices for most of the publications listed. Much of this information may also be obtained online at: <http://chartmaker.ncd.noaa.gov/mcd/dole.htm>

LNM: 43/07

GREAT LAKES - Great Lakes Water Levels

The expected water levels on the Great Lakes for April 20, 2008. Connecting Channels and the St. Lawrence River, given in inches above (+) or below (-) Low Water Datum (LWD). LWD is a plane of reference used on a navigation chart. It is also known as chart Datum.

Great Lakes:

Lake Ontario +34, Lake Erie +34, Lake St. Clair +21, Lake Michigan-Huron -5, Lake Superior -7.

St Lawrence River:

Above Long Sault Dam +46, Above Iroquois Dam +36, Ogdensburg +40, Alexandria Bay +35, Head of River at Cape Vincent +34.

Detroit River:

Lake Erie at Pelee Passage +34, Mouth of River at Gibraltar +31, Head of River above Belle Isle +21

St. Clair River:

Mouth of River at St. Clair Flats +21, Algonac +15, St. Clair +6, Blue Water Bridge 0, Head of River at Fort Gratiot -5,

Lake Huron Approach Channel -5.

St. Marys River:

Mouth of River at Detour -5, West and Middle Neebish 0, Head of Little Rapids +2, U.S. Slip 0 Above Locks -4,

Head of River at Point Iroquois -7.

Available water depth is determined for a location by adding (if +) or subtracting (if -) the amount from the above to the water depth shown on National Oceanic and Atmospheric Administration (NOAA) navigational charts. Caution: Depths so determined are representative of a still water surface elevation, disturbed by neither wind nor other causes. Depth, however, may be reduced or increased as much as several feet for short periods of time due to these disturbances, or when sections of channels develop shoals. Vessel masters should refer to the Local Notice to Mariners for extent of shoaling and scattered bedrock projections in all channels. For further information direct inquiries to: Department of the Army, Detroit District Corps of Engineers P. O. Box 1027, Detroit, MI 48231, (313) 226-6443. Additional information can be found on the U.S. Army Corps of Engineers Information Center website at <http://www.lre.usace.army.mil/greatlakes/hh/greatlakeswaterlevels/waterlevelforecasts/connectingchannelsforecasts/index.cfm?>.

LNM: 15/08

NEW YORK STATE CANAL SYSTEM - NOTICE TO MARINERS - Champlain Canal - Chart 14786

Mariners are advised that shoaling to 6.5' has been reported between red buoys 72 and 72A, just to the south of Lock C-4 on the Champlain Canal. This shoaling has been reported and confirmed at a time when flashboards adjacent to Lock C-3 were fully deflated for maintenance, decreasing water levels to "normal pool" but much lower than typical for this area. At normal pool elevation of 67.5', vessels exceeding a 6.5' draft should not transit this area.

Typical navigation season elevation for this level is 73.5' due to inflatable flashboards maintained for the purpose of hydropower generation by a private company. Therefore, depth usually encountered in this area will be approximately 6' deeper than reported above. With flashboards fully inflated on this level, controlling minimum depth is approximately 12.5'.

Mariners requiring a controlling depth of greater than 6.5' should call ahead to verify pool levels prior to transiting this area.

For updates and information on Canal conditions please call 1-800-4CANAL4 or visit www.nyscanals.gov.

LNM: 39/07

NEW YORK STATE CANAL SYSTEM NOTICE TO MARINERS - Champlain Canal -Chart 14786

Mariners are advised that a strong crosscurrent may affect vessel maneuverability immediately above Lock C-2 in Mechanicville. This crosscurrent is related to operations at an adjacent hydroelectric facility not under ownership or control of the Canal Corporation. Vessels should remain mid channel and stay well clear of cribbing clusters when transiting this area. Work has been completed at Lock E-28A in Lyons. The lock is open for navigation.

LNM: 32/07

LAKE ONTARIO - Irondequoit Bay - Shoaling - Chart 14804

Heavy shoaling has been reported in Irondequoit Bay near the Bay Entrance Channel.

LNM: 34/07

LAKE ERIE - OH, Port Clinton - Rock Hazard - Chart 14846

The Coast Guard has received a report of a rock in the water located 260 yards off shore in 3 feet of water at position 41-31-24N 082-57-34.2W. Mariners are urged to use caution when transiting this area.

LNM: 43/07

DETROIT RIVER - East Outer Channel - Chart 14848

East Outer Lighted Buoy 16 (LLNR 6960) has been changed to a year round lighted buoy. Range of the light is 3 miles.

LNM: 52/07

LAKE ST CLAIR - Chart 14850

Lake St. Clair Lighted Buoy "7" (LLNR 8445) has been changed to a year round lighted buoy. Range of the light is 3 miles.

LNM: 52/07

LAKE ST CLAIR - MI, St Clair Cut Off Channel - Chart 14850

Severe Shoaling has been reported in the vicinity of Pier Lighted Buoy X32 (LLNR 8600). All mariners are advised to use caution while transiting the area.

LNM: 15/08

LAKE ST CLAIR - St. Clair Cut-Off Channel - Severe Shoaling - Charts 14850, and 14853

Severe shoaling has been confirmed inside the St. Clair cut-off channel in the vicinity of Pier Lighted Buoy X32 (LLNR 8600). See enclosure (4) for charted depth soundings.

LNM: 14/08

LAKE HURON - Lake Huron Cut - Chart 14862

Lake Huron Cut Lighted Buoy "1" (LLNR 10035) has been changed to a year round lighted buoy. Range of the light is 3 miles.

Lake Huron Cut Lighted Buoy "11" (LLNR 10085) has been changed to a year round lighted buoy. Range of the light is 3 miles.

LNM: 52/07

LAKE HURON - Lexington Harbor, MI - Shoaling - Chart 14862

Surveys performed during July 2007 indicate shoaling in the Federal navigation channel at Lexington Harbor, Michigan. The surveys are available on internet address: <http://www.lre.usace.army.mil/who/operationsofficehomepage/> Mariners are urged to use extreme caution in the area.

LNM: 31/07

ILLINOIS WATER WAY - IL, Illinois River - Shoaling

Shoaling has been reported near the left descending bank of the Illinois River at MM 200. All mariners use caution when transitting this area.

LNM: 47/07

LAKE MICHIGAN - Grand Traverse Bay - Aid Reduced Intensity - Chart 14913

Grand Traverse Light (LLNR 18110) has a range reduced from 24 Miles to 18 Miles.

LNM: 42/07

LAKE MICHIGAN - IN - Portage Burns Waterway

Shoaling has been reported at the entrance to and within the channel of the Portage - Burns Waterway.

LNM: 15/08

LAKE MICHIGAN - MI, Arcadia - Shoaling - Hazard to Navigation

The Coast Guard has received a report of shoaling in the vicinity of Arcadia channel entrance. All mariners are urged to use caution when transiting the channel.

LNM: 43/07

LAKE MICHIGAN - MI, Pentwater Harbor - Shoaling - Chart 14907

Shoaling has been reported perpendicular to the entrance of Pentwater Harbor. All mariners use caution while transiting the area.

LNM: 29/07

LAKE MICHIGAN - Muskegon - Unpublished Winter mark - Chart 14934

A winter mark was placed in position of Muskegon Lake Lighted Buoy 3 (18750) 43-13-55.050N 086-18-04.217W. This winter mark is not published in the Great Lakes Light List. Mariners are urged to use caution while transiting this area.

LNM: 50/07

LAKE MICHIGAN - New Buffalo Harbor Entrance, MI - Severe Shoaling - Chart 14905

The Coast Guard has received a report of severe shoaling at the New Buffalo Harbor Entrance. All Mariners are urged to use caution when transiting the area.

LNM: 45/07

LAKE MICHIGAN - Waugoshance Point to Seul Choix Point - Chart 14911

White Shoal Light (LLNR 17750) The characteristic has been changed to FI W 4s. The range of the light has been reduced from 17 to 11 miles. The fog signal will be secured for the winter navigation season.

LNM: 01/08

LAKE MICHIGAN - Ludington Harbor - Shoaling - Chart 14937

Shoaling has been reported in Ludington Harbor Channel, in view of Ludington South Pierhead Light 6 (LLNR 18560). Depths were reported as shallow as 14 feet along the south edge of the channel and 24 feet mid-channel.

LNM: 27/06

LAKE MICHIGAN - Waukegan Harbor, IL - Shoaling - Chart 14904

Shoaling has been reported in the Waukegan Harbor Channel. The shoaling protrudes approximately 200 feet into the channel from the north. Available depths have been reduced to 10 feet southeast of the Waukegan North Breakwater.

LNM: 38/06

LAKE MICHIGAN -Shoaling - Illinois Waterway - Calumet River - Chart 14929

Shoaling has been reported in the vicinity of Acme Steel Been at Mile Marker 321 in the Calumet River. All mariners are to use caution when transiting this area.

LNM: 49/07

LAKE MICHIGAN - MI, Holland Harbor - Shoaling - Chart 14932

Shoaling has been reported in Holland Harbor. Depths of less than 16 feet were reported at the entrance to the channel.

LNM: 50/06

ST MARYS RIVER - De Tour Passage to Munuscong Lake - Chart 14882

Pipe Island Lighted Buoy "1" (LLNR 12865) has been changed to a year round lighted buoy.

LNM: 52/07

ST MARYS RIVER - Head of Nicolet to Whitefish Bay - Chart 14884

Pt. Iroquois Lighted Buoy 33 (LLNR 14465) has been changed to a year round lighted buoy. Range of the light is 3 miles.

Pt. Iroquois Lighted Buoy 39 (LLNR 14490) has been changed to a year round lighted buoy. Range of the light is 3 miles.

LNM: 52/07

ST MARYS RIVER - Sault Ste Marie - Ice Fields - Chart 14884

To keep adjacent ice fields intact, mariners transiting the St. Mary's River are asked to monitor the wake and displacement of their vessels to prevent incidental icebreaking. This is especially true in the West and Middle Neebish Channels, and in the vicinity of the ferries.

LNM: 50/07

LAKE SUPERIOR - Annual Spring Gill Net Survey - Chart 14961

Marquette Fisheries Research Station will be conducting its annual spring gill net survey for lake trout in Lake Superior starting 21 April and completing by 02 June 2008. They will set gill nets that are 3000ft long, extend about 6 feet from the bottom and are set overnight. The sampling stations are generally 100 to 250ft deep and within a few miles from shore. The nets will be marked with black flagged unlighted buoys, labeled with agency identification.

The survey will be conducted in the following areas of Lake Superior:

West of Keweenaw Peninsula in the Upper entry region; outer Keweenaw Bay from Bete Grise to the Huron Islands; Big Bay; Marquette; Au Train, Munising, and Grand Marais. Isle Royale will also have sampling done for about 8 days in mid-May.

In addition to the spring survey, sampling nets will be set overnight at two stations near Marquette at the beginning of each month from May through December for a special study. The near shore station is located about 3 nautical miles east northeast of the Marquette lower harbor break wall light. The off shore station is located in deepwater about 5 nautical miles northeast of the upper harbor break wall light. In addition to the standard staff buoys, these nets will have special yellow-colored unlighted mooring buoys.

Marquette Fisheries Research Station can be reached via 800 MHz Radios on their primary radio channel on Zone B, FIMARQT, or via marine radio channel 16. Their radio call sign is R/V LAKE CHAR. They can also be reached on the boat via cell phone number (906) 458-6925.

The Chippewa/Ottawa Resource Authority (CORA) will be sampling the Grand Marais area from 01 May to 01 June using the same type of gear. Please see enclosure (6) for a general schedule for the spring lake trout survey.

For further information, contact Shawn P. Sitar at (906) 249-1611 ext. 310.

LNM: 16/08

LAKE SUPERIOR - Chequamegon Bay - Temporary Aid Established - Chart 14974

A temporary white styrofoam aid has been established to mark the end of underwater cabling in position 46-48.5N 090-47.9W.

LNM: 45/07

LAKE SUPERIOR - Isle Royale - EMERGENCY RESTRICTIVE ORDER - Chart 14976

Effective Tuesday September 18, 2007, the National Park Service instituted an Emergency Restrictive Order under 36 CFR 1.5(a)(2) prohibiting the discharge of untreated ballast water within Isle Royale National Park waters. This order affects vessels intending to transit within four and one half miles of the shore of Isle Royale and immediately surrounding islands, including Passage Island and Gull Islands. Please contact the National Park Service at 219-926-7561 Ext. 311 for more information.

LNM: 39/07

LAKE SUPERIOR - MI, Marquette Harbor - Shoaling - Chart 14970

Surveys performed during July 2007 indicate shoaling in the federal navigation channel at Marquette Harbor, MI. Mariners are urged to use extreme caution in the area. Questions regarding this notice may be directed to the Army Corps of Engineers Operation Office.

LNM: 32/07

LAKE SUPERIOR - St Louis River - Shoaling - Chart 14975

Shoaling has been reported near River buoys 58-61 (LLNR 16385, 16390, 16395, 16400) in the St Louis River. All mariners are recommend to use extreme caution when transiting this area as water depths are as low as 4 feet.

LNM: 19/07

LAKE SUPERIOR - Duluth Harbor - Chart 14975

Minnesota Channel (Eastern Section) Lighted Buoy "14" (LLNR 16235) will be temporarily relocated to position 46-43'11"N 092-09'38"W approximately 80 yards inside the channel to facilitate the Tar Coal cleanup Safety Zone until the summer of 2009.

LNM: 22/07

SECTION II - DISCREPANCIES

This section lists all reported and corrected discrepancies related to Aids to Navigation in this edition. A discrepancy is a change in the status of an aid to navigation that differs from what is published or charted.

DISCREPANCIES (FEDERAL AIDS)

| LLNR | Aid Name | Status | Chart No. | BNM Ref. | LNM St | LNM End |
|--------------|---|----------------|--------------|----------------|--------------|---------|
| 2315 | Irondequoit Bay Light 8 | LT EXT | 14804 | B012-08 | 15/08 | |
| 6340 | Maumee River Turning Basin Buoy 56 | OFF STA | 14847 | D017-08 | 13/08 | |
| 6580 | Monroe Harbor Buoy 3 | OFF STA | 14846 | D010-08 | 08/08 | |
| 8880 | St Clair Shores Breakwater Daybeacon 1 | DBN DMGD | 14853 | D015-08 | 10/08 | |
| 8885 | St Clair Shores Breakwater Light 2 | HAZ NAV | 14853 | D014-07 | 10/08 | |
| 10375 | Sand Point Midchannel Buoy S | OFF STA | 14863 | D003-08 | 03/08 | |
| 10595 | Saginaw Bay Channel Buoy 4 | MISSING | 14867 | | 16/08 | |
| 10625 | Saginaw Bay Channel Lighted Buoy 10 | MISSING | 14867 | | 16/08 | |
| 10905 | Saginaw River Lighted Buoy 44 | MISSING | 14867 | D032-08 | 16/08 | |
| 11405 | Alpena Channel Buoy 3 | OFF STA | 14864 | D018-08 | 13/08 | |
| 11410 | Alpena Channel Buoy 4 | OFF STA | 14864 | D019-08 | 13/08 | |
| 12907 | Lime Island Lighted Buoy 14 | OFF STA | 14882 | S050-08 | 15/08 | |
| 13030 | Munuscong Channel (Upbound) Junction Lighted Bell Buoy | LT IMCH | 14883 | S064-08 | 16/08 | |
| 13060 | Munuscong Channel (Upbound) Buoy 7 | MISSING | 14883 | S067-08 | 16/08 | |
| 13080 | Munuscong Channel (Upbound) Lighted Buoy 11 | OFF STA | 14883 | S066-08 | 16/08 | |
| 13285 | Middle Neebish Channel Lighted Buoy 43 | LT EXT | 14883 | S065-08 | 16/08 | |
| 13525 | West Neebish Channel (Downbound) Lighted Buoy 46 | MISSING | 14883 | S047-08 | 14/08 | |
| 13530 | West Neebish Channel (Downbound) Light 45 | LT EXT | 14883 | S043-08 | 14/08 | |
| 13565 | West Neebish Channel (Downbound) Lighted Buoy 38 | OFF STA | 14883 | S044-08 | 14/08 | |
| 13955 | Upper Nicolet Range Front Light | DBN DEST | 14883 | S027-08 | 11/08 | |
| 14265 | Big Point Lighted Buoy 7 | MISSING | 14884 | S058-08 | 15/08 | |
| 14450 | Round Island Buoy 30 | MISSING | 14884 | S059-08 | 15/08 | |
| 14470 | PT Iroquois Anchorage Buoy A | OFF STA | 14884 | S063-08 | 16/08 | |
| 14730 | Huron Island Light | LT EXT | 14964 | S057-08 | 15/08 | |
| 14760 | L'Anse Buoy 1 | OFF STA | 14964 | S195-07 | 51/07 | |
| 16835 | Passage Island Light | RAC INOP | 14968 | S199-07 | 52/07 | |
| 17780 | Grays Reef Passage Channel Lighted Buoy 7 | MISSING | 14911 | S060-08 | 15/08 | |
| 18375 | Frankfort North Breakwater Light | SS INOP | 14939 | | 15/08 | |
| 18415 | Portage Lake North Pierhead Light | SS INOP | 14939 | M116-08 | 15/08 | |
| 18530 | Ludington North Breakwater Light | SS INOP | 14937 | | 15/08 | |
| 18620 | Pentwater North Pierhead Light 3 | SS INOP | 14907 | | 15/08 | |
| 18965 | Grand Haven South Pierhead Entrance Light | SS INOP | 14933 | | 15/08 | |
| 19285 | Holland Harbor South Breakwater Light | SS INOP | 14932 | | 15/08 | |
| 19515 | St Joseph North Pierhead Light | SS INOP | 14930 | | 15/08 | |
| 19525 | St Joseph South Pierhead Light | REDUCED INT | 14930 | M095-08 | 13/08 | |

| | | | | | |
|--------------|-----------------------------------|----------------|--------------|----------------|--------------|
| 19545 | Michigan City East Pierhead Light | SS INOP | 14905 | | 15/08 |
| 19820 | Calumet Buoy 5 | OFF STA | 14926 | M124-08 | 16/08 |
| 21255 | Cana Island Light | LT EXT | 14909 | M105-08 | 14/08 |
| 21290 | Rowley Bay Buoy 3 | MISSING | 14909 | M027-08 | 05/08 |
| 21295 | Rowley Bay Buoy 4 | MISSING | 14909 | M028-08 | 05/08 |
| 21305 | Plum Island Range Front Light | REDUCED INT | 14909 | M023-08 | 04/08 |
| 21335 | Waverly Shoal Lighted Bell Buoy 5 | MISSING | 14909 | M073-08 | 08/08 |
| 21340 | Detroit Island Passage Buoy 2 | MISSING | 14909 | M073-08 | 08/08 |
| 21345 | Plum Island Lighted Buoy 1 | OFF STA | 14909 | M034-08 | 06/08 |
| 21630 | Little Bay De Noc Lighted Buoy 8 | MISSING | 14915 | M106-08 | 15/08 |

DISCREPANCIES (FEDERAL AIDS) CORRECTED

| LLNR | Aid Name | Status | Chart No. | BNM Ref. | LNM St | LNM End |
|-------|--|-------------------|-----------|----------|--------|---------|
| 4730 | Sandusky Bay Exit Channel Range Rear Light | WATCHING PROPERLY | 14845 | D030-08 | 15/08 | 16/08 |
| 7380 | Point Mouillee Access Channel Buoy 3 | WATCHING PROPERLY | 14854 | D165-07 | 52/07 | 16/08 |
| 9770 | Willow Point Light | WATCHING PROPERLY | 14853 | D031-08 | 16/08 | 16/08 |
| 10210 | Point Aux Barques Light | WATCHING PROPERLY | 14862 | D033-08 | 16/08 | 16/08 |
| 10740 | Saginaw Bay Channel Lighted Buoy 28 | WATCHING PROPERLY | 14867 | | 14/08 | 16/08 |

DISCREPANCIES (PRIVATE AIDS)

| LLNR | Aid Name | Status | Chart No. | BNM Ref. | LNM St | LNM End |
|---------|---|-------------------------|-----------|----------|--------|---------|
| 7390 | South Huron Valley Outfall West Lighted Buoy | MISSING | 14853 | | 38/07 | |
| 7395 | South Huron Valley Outfall Center Lighted Buoy | MISSING | 14853 | | 38/07 | |
| 7400 | South Huron Valley Outfall East Lighted Buoy | MISSING | 14853 | | 38/07 | |
| 8140 | Great Lakes Steel Shoal Lighted Buoy 1 | MISSING | 14853 | | 38/07 | |
| 8145 | Great Lakes Steel Shoal Lighted Buoy 3 | MISSING | 18453 | | 38/07 | |
| 8150 | Detroit Edison Cell Light South | LT EXT | 14853 | | 38/07 | |
| 8155 | Detroit Edison Cell Light North | LT EXT | 14853 | | 38/07 | |
| 8735 | Crescent Sail Yacht Club Breakwater South Light | LT EXT | 14853 | | 38/07 | |
| 8745 | Municipal Pier South Basin Light | MISSING | 14853 | | 38/07 | |
| 8940 | Black Creek Lighted Buoy 1 | MISSING | 14853 | | 21/07 | |
| 9840 | Recors Point Dock Lower Light | LT EXT | 14853 | D080-06 | 25/06 | |
| 15420 | Washburn Harbor South Breakwater Light 2 | DBN IMCH/NUM MSNG/DAMGD | 14974 | | 29/07 | |
| 15425 | Washburn Harbor North Breakwater Light 1 | DBN IMCH/NUM MSNG/DAMGD | 14974 | | 29/07 | |
| 19925 | Four-Mile Crib Light | LT EXT | 14927 | M477-07 | 40/07 | |
| 20390 | Northpoint Marina Entrance Light 1 | LT EXT | 14904 | | 47/07 | |
| 20490 | Racine East Harbor Entrance Light 2 | LT EXT | 14925 | M110-08 | 15/08 | |
| 20775 | Port Washington South Projection Jetty Light | LT IMCH | 14904 | M542-07 | 46/07 | |
| 22055.4 | Suamico Lighted Buoy 4 | LT EXT | 14918 | M328-07 | 30/07 | |

DISCREPANCIES (PRIVATE AIDS) CORRECTED

| LLNR | Aid Name | Status | Chart No. | BNM Ref. | LNM St | LNM End |
|------|----------|--------|-----------|----------|--------|---------|
|------|----------|--------|-----------|----------|--------|---------|

None

PLATFORM DISCREPANCIES

| Name | Status | Position | BNM Ref. | LNM St | LNM End |
|------|--------|----------|----------|--------|---------|
|------|--------|----------|----------|--------|---------|

None

PLATFORM DISCREPANCIES CORRECTED

| Name | Status | Position | BNM Ref. | LNM St | LNM End |
|------|--------|----------|----------|--------|---------|
| None | | | | | |

SECTION III - TEMPORARY CHANGES and TEMPORARY CHANGES CORRECTED

This section contains temporary changes and corrections to Aids to Navigation for this edition. When charted aids are temporarily relocated for dredging, testing, evaluation, or marking an obstruction, a temporary correction shall be listed in Section IV giving the new position.

TEMPORARY CHANGES

| LLNR | Aid Name | Status | Chart No. | BNM Ref. | LNM St | LNM End |
|-------|--|--------------|-----------|----------|--------|---------|
| 15525 | Bayfield Municipal Breakwater Light | DISCONTINUED | 14973 | S158-07 | 44/07 | |
| 20680 | Menomonee River Obstruction Lighted Buoy | ESTABLISHED | 14924 | | 31/06 | |

TEMPORARY CHANGES CORRECTED

| LLNR | Aid Name | Status | Chart No. | BNM Ref. | LNM St | LNM End |
|------|------------------------|--------|-----------|----------|--------|---------|
| 9575 | St Clair Flats Light 2 | LWP | 14853 | | 21/07 | 29/08 |

PLATFORM TEMPORARY CHANGES

| Name | Status | Position | BNM Ref. | LNM St | LNM End |
|------|--------|----------|----------|--------|---------|
| None | | | | | |

PLATFORM TEMPORARY CHANGES CORRECTED

| Name | Status | Position | BNM Ref. | LNM St | LNM End |
|------|--------|----------|----------|--------|---------|
| None | | | | | |

SECTION IV - CHART CORRECTIONS

This section contains corrections to federally and privately maintained Aids to Navigation, as well as NOS corrections. This section contains corrective actions affecting chart(s). Corrections appear numerically by chart number, and pertain to that chart only. It is up to the mariner to decide which chart(s) are to be corrected. The following example explains individual elements of a typical chart correction.

| Chart Number | Chart Edition | Edition Date | Last Local Notice to Mariners | Horizontal Datum Reference | Source of Correction | Current Local Notice to Mariners |
|--|------------------------------|--------------|-------------------------------|----------------------------|----------------------|----------------------------------|
| 12327 | 91st Ed. | 19-APR-97 | Last LNM: 26/97 | NAD 83 | | 27/97 |
| Chart Title: NY-NJ-NEW YORK HARBOR - RARITAN RIVER | | | | | | |
| Main Panel 2245 NEW YORK HARBOR | | | | CGD01 | | |
| (Temp) ADD | NATIONAL DOCK CHANNEL BUOY 3 | | | | at 40-41-09.001N | 074-02-48.001W |
| | Green can | | | | | |
| Corrective Action | Object of Corrective Action | | Position | | | |

(Temp) indicates that the chart correction action is temporary in nature. Courses and bearings are given in degrees clockwise from 000 true. Bearings of light sectors are toward the light from seaward. The nominal range of lights is expressed in nautical miles (NM) unless otherwise noted.

| | | | | | | |
|--|---|-----------|-----------------|--------|------------------|----------------|
| 14835 | 32nd Ed. | 01-MAY-05 | Last LNM: 22/98 | NAD 83 | | 16/08 |
| ChartTitle: Erie Harbor | | | | | | |
| Main Panel 1158 ERIE HARBOR. Page/Side: N/A | | | | | | |
| ADD | Submerged Rock; None (NOS NW-15628) | | | NOS | 42-07-23.790N | 080-08-02.460W |
| 14850 | 53rd Ed. | 01-SEP-06 | Last LNM: 11/08 | NAD 83 | | 16/08 |
| ChartTitle: Lake St. Clair | | | | | | |
| Main Panel 1257 LAKE SAINT CLAIR. Page/Side: N/A | | | | | | |
| (Temp) ADD | St. Clair Cut-Off Channel Lighted Buoy 32 | | | CGD09 | at 42-30-58.140N | 082-41-10.260W |
| | Red "32" (LLNR 8600.1) | | | | | |

Q R

14852 **46th Ed.** **01-JUN-06** **Last LNM: 11/08** **NAD 83** **16/08**
ChartTitle: St. Clair River;Head of St. Clair River
Main Panel 1260 SAINT CLAIR RIVER. Page/Side: N/A

(Temp) ADD St. Clair Cut-Off Channel Lighted Buoy 32 CGD09
Red "32" (LLNR 8600.1) at 42-30-58.140N 082-41-10.260W
Q R

14853 **17th Ed.** **01-MAR-08** **Last LNM: 15/08** **NAD 83** **16/08**
ChartTitle: SMALL-CRAFT BOOK CHART - Detoit River, Lake St. Clair and St. Clair River (book of 47 charts)
Extension 1297 ST CLAIR RIVER PAGE 38. Page/Side: 38

(Temp) ADD St. Clair Cut-Off Channel Lighted Buoy 32 CGD09
Red "32" (LLNR 8600.1) at 42-30-58.140N 082-41-10.260W
Q R

SECTION V - ADVANCE NOTICES

This section contains advance notice of approved projects, changes to aids to navigation, or upcoming temporary changes such as dredging, etc.
Mariners are advised to use caution while transiting these areas.

SUMMARY OF ADVANCED APPROVED PROJECTS

| <u>Approved Project(s)</u> | <u>Project Date</u> | <u>Ref. LNM</u> |
|----------------------------|---------------------|-----------------|
| None | | |

Advance Notice(s)

LAKE ERIE - Port Clinton - Chart 14846

Port Clinton Light "2" (LLNR 5865) increase the range of the light from 6 miles to 9 miles.

LNM: 51/07

LAKE ERIE - Sandusky River - Chart 14842

Discontinue the following aids to navigation due to shoaling, low lake levels and inaccessability by servicing personal:

Muddy Creek Bay Buoy 2 (LLNR 5057)
Muddy Creek Bay Buoy 6 (LLNR 5065)
Sandusky River Buoy 14 (LLNR 5070)
Muddy Creek Bay Buoy 9 (LLNR 5056)
Sandusky River Buoy 46 (LLNR 5095)
Sandusky River Buoy 42 (LLNR 5102)
Sandusky River Buoy 44 (LLNR 5110)
Sandusky River Buoy 40 (LLNR 5111)
Sandusky River Buoy 37 (LLNR 5115)
Sandusky River Buoy 38 (LLNR 5120)
Sandusky River Buoy 32 (LLNR 5129)
Sandusky River Buoy 36 (LLNR 5133)
Sandusky River Buoy 34 (LLNR 5137)
Sandusky River Buoy 30 (LLNR 5141)
Sandusky River Buoy 28 (LLNR 5145)
Sandusky River Buoy 26 (LLNR 5149)
Sandusky River Buoy 24 (LLNR 5153)
Sandusky River Buoy 23 (LLNR 5157)
Sandusky River Buoy 18 (LLNR 5161)
Sandusky River Buoy 22 (LLNR 5163)
Sandusky River Buoy 21 (LLNR 5166)
Muddy Creek Bay Buoy 1 (LLNR 5169)

LNM: 12/08

DETROIT RIVER - Livingston Channel - Chart 14848

Propose to change the lantern from the existing incandescent lamps to an energy efficient LED, this will reduce the range of the light from 4 to 3 miles:

Livingston Channel Light "21" (LLNR 7260)
Livingston Channel Light "23" (LLNR 7250)
Livingston Channel Light "24" (LLNR 7255)
Livingston Channel Light "25" (LLNR 7240)
Livingston Channel Light "26" (LLNR 7245)

LNM: 09/07

LAKE ST CLAIR - St Clair Cut-Off Channel - Chart 14852

Establish a temporary lighted buoy inside the channel in the vicinity of Light "X32/2" (LLNR 8595) to mark shoaling. The buoy will be St. Clair Cut-Off Channel Lighted Buoy "32" (LLNR 8600.1) with a characteristic of Q R and a 3 mile range. The approximate position is 42-30.969N 082-41.171W.

LNM: 15/08

ST CLAIR RIVER - Chart 14852

Propose to change the lantern from the existing incandescent lamps to an energy efficient LED, this will reduce the range of the light from 4 to 3 miles:

Fawn Island Upper End LB "42" (LLNR 9825)

LNM: 09/07

LAKE ST. CLAIR - Charts 14850, 14853

Lake St. Clair Light (LLNR 8525) discontinue the higher intensity beam upstream. Increase the range of the light from 6 to 9 miles.

LNM: 23/07

LAKE HURON - Chart 14860

Change the commissioning date of the following buoy to 28 April:

NOAA Lighted Weather Buoy -45008- (LLNR 10010)

LNM: 12/08

LAKE HURON - Harrisville to Forty Mile Point - Chart 14864

Sturgeon Point Light (LLNR 11345) change to private aid. Characteristics and range will remain the same.

LNM: 01/07

STRAITS OF MACKINAC - Cheboygan River - Chart 14881

Propose to change the lantern from the existing incandescent lamps to an energy efficient LED, this will reduce the range of the light from 4 to 3 miles:

Cheboygan Entrance Light Buoy 2 (LLNR 11780)

LNM: 27/07

LAKE MICHIGAN - Chart 14904

Change the commissioning date of the following buoys to 21 April:

NOAA Lighted Weather Buoy "45007" (LLNR 20595)

NOAA Lighted Weather Buoy "45002" (LLNR 18310)

LNM: 12/08

LAKE MICHIGAN - Grand Traverse Bay - Chart 14913

Change the commissioning date of the following buoy to 21 April:

South Point Lighted Bell Buoy "2" (LLNR 18100)

LNM: 12/08

LAKE MICHIGAN - Lake Charlevoix - Chart 14942

Charlevoix South Pier head Light (LLNR 17925) change the color of the day mark from white to red.

LNM: 51/07

LAKE MICHIGAN - Menominee and Marinette Harbors - Chart 14917

Establish the following buoys to mark the Regulated Navigation Area (RNA) on the Menominee River. The buoys will be maintained from 14 April to 07 November.

Menominee River RNA Buoy "A" (LLNR 21943) Yellow Nun with a black letter "A" in position 45-05-59.5N and 087-36-48.6W

Menominee River RNA Buoy "B" (LLNR 21956) Yellow Can with a black letter "B" in position 45-06-03.5N and 087-37-14.5W

LNM: 05/07

LAKE MICHIGAN - Platte Bay to Leland - Chart 14912

Change the commissioning date of the following buoys to 21 April:

Pyramid Point Shoal Lighted Buoy "5" (LLNR 18350)

South Manitou Island Lighted Gong Buoy "8" (LLNR 18360)

Sleeping Bear Lighted Bell Buoy "7" (LLNR 18365)

LNM: 12/08

LAKE MICHIGAN - Port Washington to Waukegan - Chart 14904

Change the commissioning date of the following buoy to 21 April:

Milwaukee South Point Lighted Bell Buoy "1" (LLNR 20630)

LNM: 12/08

LAKE MICHIGAN - Sheboygan - Chart 14922

Sheboygan Breakwater Light (LLNR 20820) Install a user activated fog signal system; to operate the fog signal by keying the microphone on VHF Marine radio channel 79 five times.

LNM: 12/08

LAKE MICHIGAN - St. Joseph - Chart 14930

St. Joseph North Pier Inner Light (LLNR 19520) move light to rail and reduce range to 9 miles.

LNM: 49/06

LAKE MICHIGAN - St. Joseph and Benton Harbor - Chart 14930

Discontinue the following aids to navigation due to shoaling and low water levels:

St. Joseph River Buoy -4- (LLNR 19531)

St. Joseph River Buoy -4A- (LLNR 19531.1)

St. Joseph River Buoy -6- (LLNR 19532)

St. Joseph River Buoy -8- (LLNR 19533)

St. Joseph River Buoy -10- (LLNR 19533.1)

St. Joseph River Buoy -12- (LLNR 19533.2)

St. Joseph River Buoy -13- (LLNR 19533.3)

LNM: 12/08

LAKE MICHIGAN - Sturgeon Bay Ship Canal - Chart 14919

Sturgeon bay Ship Canal Buoy "15A" (LLNR 21117) change from an unlighted buoy to a lighted buoy. FI G 2.5s, 3 mile range. Seasonal from 21 April through 21 November replaced by a can in the winter.

LNM: 16/08

LAKE MICHIGAN - Upper Green bay - Chart 14909

Little Gull Island LBB2 (LLNR 21445) Move Aid Position further off of the shoal.

LNM: 51/07

LAKE MICHIGAN- Chicago Lake Front - Chart 14927

Change the commissioning date of the following buoys to 21 April:

Indiana Shoal Lighted Gong Buoy "2" (LLNR 19625)

Chicago Lake Front Northeast Shoal Lighted Buoy "2" (LLNR 19790)

LNM: 12/08

LAKE MICHIGAN - Algoma to Sheboygan - Chart 14903

Two Rivers North Pierhead light (LLNR 20925) change the characteristic from F R to FI R 2.5s. Increase the range of the light from 9 to 12 miles. Install a user activated fog signal; to operate the fog signal by keying the microphone on VHF Marine radio channel 79 five times.

LNM: 27/07

LAKE MICHIGAN - Waugoshance Point to Seul Point - Chart 14911

Seul Choix Point Light (LLNR 21490) reduce the range of the light from 26 miles to 15 miles.

LNLM: 27/07

LAKE MICHIGAN - Waukegan to South Haven - Chart 14905

Michigan City East Pierhead Light (LLNR 19545) change the operation of the Fog Signal to a user activated system. Install a user activated fog signal system; to operate the fog signal by keying the microphone on VHF Marine radio channel 79 five times.

LNLM: 49/06

LAKE MICHIGAN - Manitowoc Harbor - Chart 14922

Manitowoc Breakwall Light (LLNR 20860) Reduce the range of the light from 15 to 12 miles. Install a user activated fog signal system; to operate the fog signal by keying the microphone on VHF Marine radio channel 79 five times.

LNLM: 01/07

LAKE MICHIGAN - Milwaukee Harbor - Chart 14924

Milwaukee Breakwater Light (LLNR 20635) Discontinue the floodlights. Install a user activated fog signal system; to operate the fog signal by keying the microphone on VHF Marine radio channel 79 five times.

LNLM: 01/07

LAKE MICHIGAN - Port Washington to Waukegan - Chart 14904

Waukegan Harbor Light (LLNR 20315) Reduce the range of the light from 14 to 12 miles. Install a user activated fog signal system; to operate the fog signal by keying the microphone on VHF Marine radio channel 79 five times.

LNLM: 01/07

LAKE MICHIGAN - Indiana Harbor - Charts 14926, and 14929

Indiana Harbor East Breakwater Light (LLNR 19675) reduce the range of the light from 20 to 12 miles. Install a user activated fog signal system; to operate the fog signal by keying the microphone on VHF Marine radio channel 79 five times.

LNLM: 11/07

ST MARYS RIVER - Munuscong Lake to Sault Ste. Marie - Chart 14883

Change the lantern from the existing incandescent lamps to an energy efficient LED, this will reduce the range of the light from 4 to 3 miles:

Munuscong Channel (Upbound) Lighted Buoy 5 (LLNR 13050)
Sailors Encampment Channel Lighted Buoy 17 (LLNR 13115)
Middle Neebish Channel Lighted Buoy 43 (LLNR 13285)
Middle Neebish Channel Lighted Buoy 59 (LLNR 13345)
Lake Nicolet Lighted Buoy 63 (LLNR 13380)
West Neebish Channel (Downbound) Lighted Buoy 53 (LLNR 13485)
Bayfield Channel Lighted Buoy 107 (LLNR 14170)
Munuscong Channel Lighted Buoy 29 (LLNR 13217)
Lake Nicolet Lighted Buoy 66 (LLNR 13395)
Pipe Island Lighted Buoy 12 (LLNR 12880)
Round Island Lighted Buoy 25 (LLNR 13740)
Cedar Point Lighted Buoy 23 (LLNR 14410)
Big Point Lighted Buoy 7 (LLNR 14265)
Lake Nicolet Lighted Buoy 83 (LLNR 13970)
West Neebish Channel (Downbound) Lighted Buoy 46 (LLNR 13525)
West Neebish Channel (Downbound) Light 16 (LLNR 13680)
Lake Nicolet Light 80 (LLNR 13465)
West Neebish Channel (Downbound) Light 28 (LLNR 13615)
West Neebish Channel (Downbound) Light 27 (LLNR 13620)
West Neebish Channel (Downbound) Light 14 (LLNR 13690)

LNLM: 43/07

LAKE SUPERIOR - Beaver Bay to Pigeon Point - Chart 14967

Grand Portage Bay Entrance Light (LLNR 16635) increase the range of the light from 7 to 9 miles.

LNLM: 23/07

LAKE SUPERIOR - Apostle Islands - Chart 14973

Michigan Island Light (LLNR 15275) increase the range of the light from 11 to 12 miles

LNLM: 41/07

SECTION VI - PROPOSED CHANGES

Periodically, the Coast Guard evaluates its system of aids to navigation to determine whether the conditions for which the aids to navigation were established have changed. When changes occur, the feasibility of improving, relocating, replacing, or discontinuing aids are considered. This section contains notice(s) of non-approved, proposed projects open for comment. SPECIAL NOTE: Mariners are requested to respond in writing to the District office unless otherwise noted (see banner page for address).

PROPOSED WATERWAY PROJECTS OPEN FOR PUBLIC COMMENT

| <u>Proposed Project(s)</u> | <u>Closing</u> | <u>Docket No.</u> | <u>Ref. LNM</u> |
|----------------------------|----------------|-------------------|-----------------|
|----------------------------|----------------|-------------------|-----------------|

None

Proposed Change Notice(s)

LAKE ERIE - West End of Sandusky Bay - Chart 14842

Muddy Creek

Squaw Island Light 12 (LLNR 5085) change flash characteristic to QW and day board to read "Danger Shoal"

Sandusky River

Sandusky River Daybeacon 13 (LLNR 5090) change day board to white with orange bands and to read "Danger Rock"

Sandusky River Daybeacon 15 (LLNR 5096) change day board to white with orange bands and to read "Danger Rock"

Sandusky River Daybeacon 17 (LLNR 5100) change day board to white with orange bands and to read "Danger Rock"

LNM: 13/08

LAKE ERIE - Black Rock Canal / Niagara River - Chart 14832, 14833

Propose to change the lantern from its current incandescent lamps to an energy efficient LED which will reduce the range of the lantern from 4 to 3 miles.

Black Rock Canal LB "1" (LLNR 2785)

Black Rock Canal LB "3" (LLNR 2795)

Black Rock Canal LB "9" (LLNR 2825)

Black Rock Canal LB "10" (LLNR 2830)

Strawberry Island LB "7" (LLNR 3025)

Tonawanda Channel LB "28" (LLNR 3155)

LNM: 11/08

LAKE ST. CLAIR - Charts 14850 and 14843

Propose to change the lantern from its current incandescent lamps to an energy efficient LED which will reduce the range of the lantern from 4 to 3 miles.

Clinton River Entrance LB "CR" (LLNR 8975)

Clinton River Entrance LB "1" (LLNR 8980)

Clinton River Entrance LB "2" (LLNR 8985)

North Channel Entrance LB "2NC" (LLNR 9305)

Middle Channel Entrance LB "1MC" (LLNR 9435)

Point Huron LB "1PH" (LLNR 8925)

St. Clair Flats Old Channel LB "2OC" (LLNR 9530)

Gaukler Shoal Junction LB (LLNR 8855)

Gaukler Shoal LB "1" (LLNR 8850)

LNM: 10/08

LAKE HURON - Lexington Harbor - Chart 14862

Discontinue the following aids to navigation due to shoaling and low water levels:

| LLNR | Aid Name |
|------|----------|
|------|----------|

| | |
|-------|---------------------------|
| 10105 | Lexington Harbor Buoy -5- |
|-------|---------------------------|

| | |
|-------|---------------------------|
| 10110 | Lexington Harbor Buoy -6- |
|-------|---------------------------|

LNM: 03/08

LAKE HURON - Harrisville to Forty Mile Point - Chart 14864

Presque Isle Light (LLNR 11550) Change the aid from a federal aid to navigation to a private aid to navigation. The characteristic will remain the same.

LNM: 20/07

STRAITS OF MACKINAW - Michigan Inland Route - Chart 14886

Propose to change the lantern from the existing incandescent lamps to an energy efficient LED, this will reduce the range of the light from 4 to 3 miles on the following aids:

Pickerel Channel Entrance Light "2" (LLNR 12135)

Crooked Lake Light "77" (LLNR 12120)

LNM: 12/08

LAKE MICHIGAN - Port Washington - Chart 14901

Port Washington Breakwater Light (LLNR 20770) Install a user activated fog signal system; to operate the fog signal key the microphone on VHF Marine Radio channel 79 five times.

LNM: 15/08

ST MARYS RIVER - De Tour to Munuscong Lake - Chart 14882

Propose to change the lantern from the existing incandescent lamps to an energy efficient LED, this will reduce the range of the light from 4 to 3 miles.::

Lime Island Lighted Buoy "14A" (LLNR 12910)
Lime Island Lighted Buoy "16" (LLNR 12935)
Point Aux Frenes Lighted Buoy "22" (LLNR 12980)
Point Aux Frenes Lighted Buoy "24" (LLNR 12990)
Hay Point Reef Lighted Buoy "18A" (LLNR 12955)
Munuscong Lake Lighted Buoy "25" (LLNR 13005)
Munuscong Lake Lighted Buoy "26" (LLNR 13010)

LNM: 05/08

LAKE SUPERIOR - Apostle Islands - Chart 14973

Sand Island Buoy "2" (LLNR 15575) change to a seasonal buoy from 21 May to 14 October. No winter mark.

LNM: 13/08

LAKE SUPERIOR - Apostle Islands - Chart 14973

Outer Island Light (LLNR 15255) Propose to change the lantern from the existing incandescent lamps to an energy efficient LED this will reduce the range of the light from 15 to 12 miles.

Devils Island Light (LLNR 15565) Propose to change the lantern from the existing incandescent lamps to an energy efficient LED this will reduce the range of the light from 15 to 12 miles.

LNM: 07/08

LAKE SUPERIOR - Big Bay Point to Redridge - Chart 14964

Huron Island Light (LLNR 14730) Propose to change the lantern from the existing incandescent lamps to an energy efficient LED this will reduce the range of the light from 15 to 12 miles.

Manitou Island Light (LLNR 15170) Propose to change the lantern from the existing incandescent lamps to an energy efficient LED this will reduce the range of the light from 18 to 12 miles.

LNM: 07/08

LAKE SUPERIOR - Duluth Superior Harbor - Chart 14975

Propose to change the lantern from the existing incandescent lamps to an energy efficient LED, this will reduce the range of the light from 4 to 3 miles:

Superior Front Channel Lighted Buoy "2" (LLNR 15705)
Superior Front Channel Lighted Buoy "14" (LLNR 15805)
Superior Front Channel Lighted Buoy "18" (LLNR 15820)
St. Louis Bay South Channel Western Section Lighted Buoy "13" (LLNR 16165)

LNM: 05/08

LAKE SUPERIOR - Isle Royale - Chart 14976

Passage Island Light (LLNR 16835) Propose to change the lantern from the existing incandescent lamps to an energy efficient LED this will reduce the range of the light from 17 to 12 miles.

Rock of Ages Light (LLNR 16655) Propose to change the lantern from the existing incandescent lamps to an energy efficient LED this will reduce the range from 17 to 12 miles.

LNM: 07/08

For any comments or questions on these proposed changes please contact

Doug Sharp of the Ninth District Aids to Navigation office at (216) 902-6070.

SECTION VII - GENERAL

This section contains information of general concern to the Mariners. Mariners are advised to use caution while transiting these areas.

Waterways Analysis and Management System Study - 2008

The Coast Guard is conducting a Waterways Analysis and Management System Study on the following waterways during 2008. The study focuses on the area's aid to navigation system, waterborne commerce, marine casualty information, emergency response plans, routine and emergency communication capabilities, and future development projects. Any company or individual wishing to provide comments or participate in a user

Waterways Analysis and Management System Study - 2008

survey should contact the office listed below each study area.

Lake Erie - Conneaut Harbor - Chart 14824

Contact: Commanding Officer
USCG Sector Buffalo
1 Fuhrmann Blvd.
Buffalo, N.Y. 14203
(716) 813-9524

Lake Erie - Erie Islands - Chart 14844

Contact: Commanding Officer
USCG Sector Detroit
110 Mt. Elliot Ave.
Detroit, MI 48207
(313) 568-9523

Lake Superior - Whitefish Bay - Chart 14884

Contact: Commanding Officer
USCGC Alder (WLB 216)
1201 Minnesota Avenue
Duluth, MN 55802-2492
(218) 529-3131

Lake Michigan - Northern Green Bay, Little Bay De Noc - Chart 14908, 14909, 14915

Contact: Commanding Officer
USCGC Mobile Bay (WTGB 103)
P.O. Box 287
Sturgeon Bay, Wi. 54235

Lake Michigan - Manitowoc and Sheboygan - Chart 14922

Contact: Commanding Officer
USCG Sector Lake Michigan
2420 South Lincoln Memorial Drive
Milwaukee, Wi. 53207
(414) 741-7188

Lake Michigan - Green Bay Entrance - Chart 14918

Contact: Commanding Officer
USCGC Mobile Bay (WTGB 103)
P.O. Box 287
Sturgeon Bay, WI 54235-0287
(920) 743-2646

Lake Huron - Tawas Bay - chart 14863

Contact: Commander (Aid to Navigation Officer)
U.S. Coast Guard Sector Detroit
110 Mt. Elliot Ave.
Detroit, Michigan 48207-4380
(313) 568-9523

Lake Huron/Lake Michigan - Mackinaw Straits - chart 14881

Contact: Commanding Officer
USCGC Mackinaw (WLBB 30)
632 Coast Guard Drive
Cheboygan, Michigan 49783-9501
(231) 596-2030

Lake Huron - Saginaw Bay - Chart 14863, 14867

Contact: Commanding Officer
USCGC Hollyhock (WLB 214)
2700 Omar Street
Port Huron, MI 48060
(810) 982-2684

LNM: 07/08

St. Clair River - MI - Black River, Port Huron, Bridge Rehabilitation, Chart 14852

Pier rehabilitation work continues on Seventh Street Bridge, Mile 0.50 over Black River. Cofferdams are being constructed at the north pier, with up to two work barges in the vicinity, and will continue until approximately May 30, 2008. An approximate 50-foot horizontal channel is available on the south side of the channel, and is marked by the contractor. Between May 31, 2008 and approximately June 2009, work barges may be on

St. Clair River - MI - Black River, Port Huron, Bridge Rehabilitation, Chart 14852

either the north or south sides, but a marked channel will be available for vessel passage at all times. There are also overhead cranes that may intermittently obstruct clearances, but will be pulled outside of the channel for passing vessels. Mariners are advised to use extreme caution when passing.

LNM: 16/08

LAKE HURON - Saginaw River Bay Harbor - Hydraulic Pipeline Dredging - Chart 14867

MCM Marine Inc. will be conducting hydraulic pipeline dredging in Saginaw River Bay Harbor. Operations will commence 10 April 2008 and will be complete 01 June 2008. Hours of operations are 24 hours a day and 7 days a week. The dredge ARTHUR J, and tug MOHAWK may be contacted on VHF-FM channels 16 and 18. Mariners are urged to pay special attention to the submerged pipeline, buoys, and required day and night signs on the dredge. For further information, contact Darwin J. McCoy at (906) 632-4316.

LNM: 16/08

******* REVISED LNM 16/08 *********LAKE MICHIGAN - IL - Chicago Harbor, Extended Period of Bridge Rehabilitation, Chart 14926, Page 23**

Structural rehabilitation work will continue on the Harrison Street Bridge at Mile 2.44 over the South Branch of the Chicago River through September 30, 2008. Work will continue on the west leaf, with the east leaf operational. Two construction barges (120' x 40') may be positioned in the navigation channel during work hours: from 0700 through 1500, Monday through Friday. To insure uninterrupted passage, during work hours, mariners must provide one-hour advance notice by contacting the Loomis Street Emergency Desk on Marine Radio, Channel 12 or (312) 747-2470 (24 hours). When not in use, the barges will be moored adjacent to the southeast corner of the bridge and lighted at night in accordance with navigation rules. Mariners are urged to transit with caution. [43/06] [47/06] [02/07] [13/07] [29/07] [37/07] [42/07] [45/07] [02/08] [14/08] [15/08] [16/08]

LNM: 16/08

LAKE MICHIGAN - IL - Chicago Harbor, Extended Period of Mechanical Repair, Chart 14926, Page 24

The AMTRAK Bridge at Mile 3.77 over the South Branch of Chicago River will be secured to masthead navigation between the hours of 0600 and 1600 on April 18 and April 25, 2008 for scheduled maintenance.

LNM: 16/08

LAKE MICHIGAN - Muskegon Harbor, MI - Maintenance Dredging - Chart 14934

The King Co., Inc. will be conducting maintenance dredging in Muskegon Harbor, MI. Operations will commence 07 April 2008 and will be complete 01 June 2008. Hours of operations are 24 hours a day and 7 days a week. The BUXTON may be contacted on VHF-FM channels 73 and 16. For further information, contact Mike Petrus at (616) 399-1784.

LNM: 16/08

LAKE MICHIGAN - WI - Sturgeon Bay Harbor, New Bridge Construction, Chart 14919

Construction of the new Maple-Oregon Bridge at Mile 4.17 over the Sturgeon Bay Ship Canal will continue through October 2008. Presently, two 14 foot sections of the new bascule leafs extend over the channel from both the east and west sides. From April 14 through April 28, 2008, components of the new west bridge span will extend approximately 102' over the navigation channel from the west side leaving an unmarked channel of varying width. From April 28 through May 30, bascule leafs will extend completely across the navigational channel securing the channel from masthead navigation. From May 30 through June 16, the west span will be kept in the open to navigation position and components of the new east bascule span will extend 114' feet over the channel from the east side leaving an unmarked channel of varying width. Throughout this period, three work barges (80' X 60') may be in the vicinity of the navigation channel. At night, the work barges will be moored adjacent to the bridge abutments and lighted in accordance with navigation rules. The new components of the bridge structure will also be lighted. Mariners are urged to pass the construction area with extreme caution.

LNM: 16/08

GREAT LAKES - GENERAL - MARINE EVENTS - SAFETY ZONES - SECURITY ZONES

Events listed below are those events that may have accompanying special local regulations. Mariners transiting these areas should contact the U.S. Coast Guard with any questions and are asked to exercise caution when navigating through the area of the event. Summary located in Enclosure (2)

St. Lawrence River**SAFETY ZONE**

Event: Independence Day Fireworks Display

Location: St. Lawrence River, Boldt Castle, Heart Island,

Time/Date: 2100-2200/ 4 July 2008

Sponsor or POC: Georgene McKinley (315) 482-9531

Event: French Festival Fireworks

Location: St. Lawrence River, Break wall at the Village of Cape Vincent

Time/Date: 2130-2230/ 12 July 2008

Sponsor or POC: Patricia A. Hinckley (315) 654-4826

Event: Clayton Fireworks

Location: St. Lawrence River, Calumet Island, Clayton, NY

St. Lawrence River

Time/Date: 2100-2200/ 5 July 2008

Sponsor or POC: Joeylynn Ramseier (315) 778-8293

MARINE EVENT

Event: Alexandria Bay Poker Run

Location: St. Lawrence River, Alexandria Bay, NY

Time/Date: 1000-1600/ 21 June 2008

Sponsor or POC: Sheryl Mackey (416) 702-4316

Event: Pirate Days Invasion

Location: St. Lawrence River around Casino Island, Alexandria Bay, NY

Time/Date: 1400-1600 9 and 16 Aug 2008

Sponsor or POC: Georgene McKinley (315) 482-9531

LNM: 16/08

Lake Ontario

SAFETY ZONE

Event: Brewerton Fireworks

Location: Oneida River, Brewerton, NY

Time and Date: 2130-2200/ 03 July 2008

Sponsor or POC: Nick Chervinsky (315) 727-4318

Event: Baldwinsville

Location: Seneca Lake, Riverside Cemetery, Baldwinsville, NY

Time and Date: 2100-2130/ 04 July 2008

Sponsor or POC: Bob Kesel (315) 224-9212

Event: Village Fireworks

Location: West Pier Sodus Bay, Sodus Point, NY

Time/Date: 2200-2230/ 03 July 2008

Sponsor or POC: Frank Wackerle (315) 573-2405

Event: City of Syracuse Fireworks Celebration

Location: Syracuse Inner Harbor, Syracuse, NY

Time and Date: 2130-2230/ 27 June 2008

Sponsor or POC: Mary Beth Roach (315) 382-7776

EVENT: Rochester Harborfest

LOCATION: Genesee River and Lake Ontario, Rochester, NY

TIME/DATE: 2130-2200/21 June 2008

SPONSOR OR POC: James Farr (585) 428-6866

EVENT: American Carp Society Northeast Regionals Fireworks

LOCATION: Seneca River, Riverside Cemetery, Baldwinsville, NY

TIME/DATE: 2100-2200/ 17 May 2008

SPONSOR OR POC: Bob Kesel (315) 224-9212

MARINE EVENT

EVENT: Seneca Riverdays

LOCATION: Seneca River, Baldwinsville, NY (Fireworks located in Riverside Cemetery)

TIME/DATE: 11-12 July 2008 (Fireworks on the 11th)

SPONSOR OR POC: Tim Horan (315) 635-3666

EVENT: Daily crew Practices

LOCATION: Erie Canal, Palmyra, NY

TIME/DATE: 1600-2100 M-F/ 0600-1200 Sat. 01May-01Nov 2008

SPONSOR OR POC: Bruce Weick (585) 377-8213

EVENT: Pittsford Regatta

LOCATION: Erie Canal, Pittsford, NY

TIME/DATE: 0830-1600/ 31 May-01June 2008

SPONSOR OR POC: Howard Weiner (585) 733-4457

EVENT: Shoreline triathlon

LOCATION: Hamlin Beach State park, Rochester, NY

Lake Ontario

TIME/DATE: 0815-1100/ 27 July 2008

SPONSOR OR POC: David or Ellen Boutillier (585) 732-1956

EVENT: Rochester Harborfest Parade of Lights

LOCATION: Genesee River and Lake Ontario, Rochester, NY

TIME/DATE: 2000-2200/20 June 2008

SPONSOR OR POC: James Farr (585)428-6866

EVENT: Ultimate Marine Group J/22 World Championship

LOCATION: Lake Ontario, Rochester, NY

TIME/DATE: 0900-1800/ 17-24 August 2008

SPONSOR OR POC: Mark Seretl (585) 248-5490

EVENT: Madcatter 2008

LOCATION: Oneida Shores County Park, Oneida, NY

TIME AND DATE: 0800-1700/16-18 May 2008

SPONSOR OR POC: Kathy Miles (315) 491-6390

Event: Syracuse Chargers Junior Invitational Regatta

Location: Onondaga Lake Outlet, Onondaga Lake, Syracuse, NY

Time and Date: 0700-1500/18 May 2008

Sponsor or POC: Larry Laszlo (315) 480-7247

Event: Oswego Yacht Club Hospice Cup Regatta

Location: Outside Oswego Harbor, Oswego, NY

Time and Date: 0800-1900/ 07 June 2008

Sponsor or POC: John Gary (315) 343-9459

Event: Oswego Yacht Club Blessing of the Fleet

Location: Inside Oswego Harbor, Oswego, NY

Time and Date: 1200-1500/ 08 June 2008

Sponsor or POC: John Gary (315) 343-9459

Event: Oswego Yacht Club Sail Oswego Regatta

Location: Outside Oswego Harbor, Oswego, NY

Time and Date: 0800-1900/ 25-26 July 2008

Sponsor or POC: John Gary (315) 343-9459

Event: Oswego Yacht Club all J-Boat Regatta

Location: Outside Oswego Harbor, Oswego, NY

Time and Date: 0800-1900/ 16-17 August 2008

Sponsor or POC: John Gary (315) 343-9459

The Event: Annual Practice Schedule of Pittsford Crew

Location: Erie Canal, Pittsford, NY

Time/Date: April-November

Sponsor or POC: Betsy Twohig-Barrett (585) 264-0562

Event: Rochester Yacht Club Fleet Review

Location: Genesee River, Rochester, NY

Time and date: 1450-1900 on 26 May 2008

Sponsor or POC: Frank Shumway (585) 721-2653 Karen Gerwitz (585) 342-5511

EVENT: Oswego Yacht Club Weekly Races

LOCATION: Outside and Inside Oswego Harbor

TIME/DATE: May-Nov

SPONSOR OR POC: John Gary (315) 598-5646

LNLM: 16/08

Niagara River

MARINE EVENT

Event: Thunder on Niagara

Location: Niagara River, Gratiwick Riverside Park, North Tonawanda, NY

Time/Date: 1100-1800 both days/ 31 May through 1 June 2008

Sponsor or POC: Dan Kanfoush (716) 284-9358

EVENT: Paddle Up Niagara 2008

LOCATION: Niagara River at Beaver Island, Grand Island, NY

Niagara River

TIME/DATE: 1200-1500/ 26 July 2008

SPONSOR OR POC: Paul Leuchner (716) 704-0546

EVENT: Duck Race

LOCATION: Erie Canal, Tonawanda, NY

TIME/DATE: 1500-1530/ 19 July 2008

SPONSOR OR POC: Lynne M. Smith (716) 285-3403

EVENT: Antique Boat Show

LOCATION: Niagara River, Grand Island, NY

TIME/DATE: 1000-1600/ 06 August 2008

SPONSOR OR POC: Tom Frauenheim (716) 773-7629

LNM: 16/08

Lake Erie

MARINE EVENT

EVENT: Great Lakes International Challenge Cup Race. The Ira G Ross Great Race for the James H. Righter Trophy

LOCATION: Eastern End of Lake Erie, Buffalo, NY

TIME/DATE: 0900-1600/13-15 June 2008

SPONSOR OR POC: Timothy M. Hunt (716) 440-7108

EVENT: Mercyhurst Prep Regatta

LOCATION: West end of Presque Isle Bay

TIME/DATE: 0700-1600/12 May 2008

SPONSOR OR POC: David Geiger (814) 882-8358

Event: Swim the Bay Event

Location: Presque Isle State Park, Lake Erie, Erie, PA

Time/Date: 0900-1100/28 June 2008 (rain date) 29 June 2008

Sponsor or POC: Patricia Davis (814) 450-9526

Event: US Sailing Team racing Championships

Location: Presque Isle, Lake Erie, Erie, PA

Time/Date: 0800-1800/15-17 August 2008

Sponsor or POC: David McBrier (814) 455-4799

EVENT: Buffalo Harbor Sailing Club 2008 Race Season

LOCATION: Eastern Basin, Lake Erie, Buffalo, NY

TIME/DATE: Various Times/15 May 2008-06 Aug 2008

SPONSOR OR POC: Rick Lenard (716) 856-6314

EVENT: Western New York Fun Run

LOCATION: Upper Niagara and Lake Erie, Grand Island

TIME/DATE: 1000-1600/14 June 2008

SPONSOR OR POC: Humphrey Stinson (716) 946-0332

EVENT: BYC J/22 Raw Bar Regatta

LOCATION: Eastern End of Lake Erie, Buffalo, NY

TIME/DATE: 0900-1630/19-20 July 2008

SPONSOR OR POC: Joe Gelsomino (716) 861-8323

EVENT: Queen City Regatta and Mayors Cup Regatta

LOCATION: Eastern End of Lake Erie, Buffalo, NY

TIME/DATE: 0900-170/ 9-10 Aug 2008

SPONSOR OR POC: Timothy M. Hunt (716) 440-7108

LNM: 16/08

SECTION VIII - LIGHT LIST CORRECTIONS

An Asterisk *, indicates the column in which a correction has been made to new information

| (1) No. | (2) Name and Location | (3) Position | (4) Characteristic | (5) Height | (6) Range | (7) Structure | (8) Remarks |
|------------|---------------------------------|---------------------------------|-----------------------|---------------|--------------------|--------------------|----------------|
| 3075 | GRAND ISLAND DIRECTION LIGHT | 42-58-40.130N 078-56-50.240W | F R W G | 29 9 | R W G 7 * | 4 NB on gray post. | 16/08 |

SECTION VIII - LIGHT LIST CORRECTIONS (Continued)

| (1) No. | (2) Name and Location | (3) Position | (4) Characteristic | (5) Height | (6) Range | (7) Structure | (8) Remarks |
|------------|--|---------------------------------|-----------------------|---------------|--------------|----------------------|---|
| 8495 | Lake St Clair Lighted Buoy 17 | 42-25-50.100N 082-48-17.740W | Fl G 4s | | 3 | Green. | 16/08 |
| 8590 | St. Clair Cut-Off Channel Preferred Channel Lighted Buoy | 42-30-58.568N 082-41-22.251W | Fl (2+1)G 6s | | 4 | Green and red bands. | * Replaced by can from Dec. 14 to Apr. 07. 16/08 |
| 8600.1 | St. Clair Cut-Off Channel Lighted Buoy 32 | 42-30-58.140N 082-41-10.260W | Q R | | 3 | | 16/08 |
| 11346 | TBNMS Wreck Mooring Buoy | 44-53-49.000N 083-19-39.000W | Q W | | | Mooring buoy. | "Neelie Gardner" Private aid. 16/08 |
| 11347 | TBNMS Wreck Mooring Buoy | 44-59-02.200N 083-16-01.400W | Q W | | | Mooring buoy. | "Montana (Stern)" Private aid. 16/08 |
| 11348 | TBNMS Wreck Mooring Buoy | 44-59-03.800N 083-15-11.000W | Q W | | | Mooring buoy. | "Montana (Bow)" Private aid. 16/08 |
| 11349 | TBNMS Wreck Mooring Buoy | 44-59-03.800N 083-15-58.400W | Q W | | | Mooring buoy. | "NORTH POINT" Private aid. 16/08 |
| 11350 | TBNMS Wreck Mooring Buoy | 45-00-58.200N 083-18-14.400W | Q W | | | Mooring buoy | Barge #1. Private aid. 16/08 |
| 11351 | TBNMS Wreck Mooring Buoy | 45-01-34.000N 083-20-51.400W | Q W | | | Mooring buoy. | "Oscar T. Flint" Private aid. 16/08 |
| 11352 | TBNMS Wreck Mooring Buoy | 45-02-07.000N 083-19-39.000W | Q W | | | Mooring buoy | "Scanlon's Barge" Private aid. 16/08 |
| 11353 | TBNMS Wreck Mooring Buoy | 45-03-46.000N 083-23-34.000W | Q W | | | Mooring buoy. | "William P. Rend" Private aid. 16/08 |
| 11354 | TBNMS Wreck Mooring Buoy | 45-03-03.000N 083-26-07.000W | Q W | | | Mooring buoy. | "Shamrock" Private aid. 16/08 |
| 11450 | TBNMS Wreck Mooring Buoy | 44-57-55.200N 083-06-09.700W | Q W | | | Mooring bouy. | "Pewabic" Private aid. 16/08 |
| 11451 | TBNMS Wreck Mooring Buoy | 44-58-06.400N 083-11-55.600W | Q W | | | Mooring buoy. | "Grecian (Bow)" Private aid. 16/08 |
| 11452 | TBNMS Wreck Mooring Buoy | 44-58-06.400N 083-11-55.600W | Q W | | | Mooring buoy. | "Grecian (Stern)" Private aid. 16/08 |
| 11453 | TBNMS Wreck Mooring Buoy | 44-58-35.200N 083-13-17.000W | Q W | | | Mooring buoy | "Carbide Barge" Private aid. 16/08 |
| 11454 | TBNMS Wreck Mooring Buoy | 45-00-58.800N 083-09-53.400W | Q W | | | Mooring buoy. | "E. B. Allen" Private aid. 16/08 |
| 11455 | TBNMS Wreck Mooring Buoy | 45-01-59.900N 083-11-59.400W | Q W | | | Mooring buoy. | "Monohansett" Private aid. 16/08 |
| 11456 | TBNMS Wreck Mooring Buoy | 45-02-35.800N 083-14-22.500W | Q W | | | Mooring buoy. | "New Orleans" Private aid. 16/08 |

SECTION VIII - LIGHT LIST CORRECTIONS (Continued)

| (1) No. | (2) Name and Location | (3) Position | (4) Characteristic | (5) Height | (6) Range | (7) Structure | (8) Remarks |
|------------|--|---------------------------------|-----------------------|---------------|--------------|----------------------------------|---|
| 11457 | <i>TBNMS Wreck Mooring Buoy</i> * | 45-02-21.000N 083-11-33.000W | Q W | | | Mooring buoy. | "TBI Reef" Private aid. 16/08 |
| 11458 | <i>TBNMS Wreck Mooring Buoy</i> * | 45-02-42.700N 083-09-11.800W | Q W | | | Mooring buoy. | "William P. Thew" Private aid. 16/08 |
| 11459 | <i>TBNMS Wreck Mooring Buoy</i> * | 45-03-22.800N 083-10-11.200W | Q W | | | Mooring buoy. | "Lucinda Van Valkenburg" Private aid. 16/08 |
| 11460 | <i>TBNMS Wreck Mooring Buoy</i> * | 45-03-05.300N 083-02-22.000W | Q W | | | Mooring buoy. | "Isaac M. Scott" Private aid. 16/08 |
| 11461 | <i>TBNMS Wreck Mooring Buoy</i> * | 45-08-13.000N 083-09-32.000W | Q W | | | Mooring buoy. | "Nordmeer" Private aid. 16/08 |
| 11462 | <i>TBNMS Wreck Mooring Buoy</i> * | 45-10-05.100N 083-13-03.500W | Q W | | | Mooring buoy. | "New Orleans" Private aid. 16/08 |
| 11463 | <i>TBNMS Wreck Mooring Buoy</i> * | 45-12-04.000N 083-19-49.000W | Q W | | | Mooring buoy. | "Middle Island Sink Holes" Private aid. 16/08 |
| 13170 | DARK HOLE EAST RANGE FRONT LIGHT * | 46-15-53.800N 084-06-54.700W | F G | 28 9 | | KRG on square skeleton tower. | Range marks eastern half of of channel. F G light operated from Nov. 15 to Apr. 15. 16/08 |
| 13190 | HARWOOD POINT EAST RANGE FRONT LIGHT * | 46-19-17.198N 084-07-12.121W | F R | 30 9 | | KRG on cylindrical tower. | For upbound traffic. Range marks eastern half of channel. F R light operated from Nov. 15 to Apr. 15. Lighted throughout 24 hours. 16/08 |

ENCLOSURES

(1) Summary of Dredging[SUMMARY OF DREDGIN2.pdf](#)

Construction Operations in Effect

(2) Great Lakes - General - Marine Events[GREAT LAKES.pdf](#)

Summary of Marine Events

(3) LAKE MICHIGAN - Sturgeon Bay and Canal[sturgeon bay wisconsin3.pdf](#)

Proposed Changes to Navigation

(4) LAKE ST CLAIR - St. Clair Cut-Off Channel[mapstclaircut21.pdf](#)

- Severe Shoaling - Charts 14850, and 14853

(5) U.S. Coast Pilot 6, Great Lakes, and their connecting waterways, 2008 (38th) Edition

[CP6-0802.pdf](#)

Change No. 2

LNM: 16/08

(6) LAKE SUPERIOR - Chart 14961

[image \(2\).pdf](#)

Annual Spring Gill Net Survey

John E. Crowley, JR
Rear Admiral, U. S. Coast Guard
Commander, Ninth Coast Guard District

SUMMARY OF DREDGING/CONSTRUCTION OPERATIONS IN EFFECT

The LNM column is where the entry originally appeared and where detailed information may be obtained. The dates listed for completions are tentative.

| Location | LNM | Subject | Hours / Days | Until |
|-----------------------------------|--------------|--|----------------------|--------------|
| <u>LAKE ERIE</u> | | | | |
| Toledo Harbor, OH | 12/08 | CONTINUATION OF BRIDGE REHABILITATION | VARIOUS | 31 MAY 08 |
| Lorain Harbor, OH | 15/08 | SCHEDULED BRIDGE REPLACEMENT | 0700-1500/ MON-FRI | 01 JUL 08 |
| Cleveland Harbor, OH | 15/08 | SCHEDULED LIGHTING OUTAGE | 1400-2200 | 19 APR 08 |
| <u>DETROIT RIVER</u> | | | | |
| Trenton Channel, MI | 51/07 | SCHEDULED BRIDGE MAINTENANCE | 0600-1430 /MON-FRI | TBD |
| Pte Mouille Access Channel | 10/08 | MAINTENANCE DREDGING | 24 HRS A DAY/ 7 DAYS | 30 AUG 08 |
| <u>STRAITS OF MACKINAC</u> | | | | |
| Cheboygan Harbor, MI | 44/07 | DAM REHABILITATION | 0700-2200/ 7 DAYS | 30 OCT 08 |
| Mackinac Island, MI | 35/07 | HARBOR REPAIRS AND RENOVATIONS | 0800-2000/ MON-SAT | 15 MAY 08 |
| Mackinac Island, MI | 15/08 | HARBOR REPAIRS AND RENOVATIONS | 0800-2000/ MON-SAT | 15 JUN 08 |
| <u>ST CLAIR RIVER</u> | | | | |
| Port Huron, MI | 16/08 | BRIDGE REHABILITATION | VARIOUS | JUNE 09 |
| <u>LAKE HURON</u> | | | | |
| Saginaw River Bay Harbor | 16/08 | HYDRAULIC PIPELINE DREDGING | 24 HRS A DAY/ 7 DAYS | 01 JUNE 08 |
| <u>LAKE MICHIGAN</u> | | | | |
| Chicago Harbor, IL | 37/07 | BRIDGE UNABLE TO OPEN | 24 HRS A DAY/ 7 DAYS | TBD |
| Two Rivers Harbor, WI | 40/07 | SCHEDULED BRIDGE DEMOLITION & CONSTRUCTION | 24 HRS A DAY/ 7 DAYS | 30 JUN 08 |
| Wilmette Harbor, IL | 07/08 | MAINTENANCE DREDGING | 24 HRS A DAY/ 7 DAYS | 01 JUN 08 |
| Holland Harbor | 07/08 | MAINTENANCE DREDGING | 24 HRS A DAY/ 7 DAYS | 30 MAY 08 |
| Grand Haven Harbor | 07/08 | MAINTENANCE DREDGING | 24 HRS A DAY/ 7 DAYS | 30 MAY 08 |
| Milwaukee Harbor, WI | 10/08 | BRIDGE REHABILITATION | 0700-1600/ MON-SAT | 31 MAY 08 |
| Chicago Harbor, IL | 11/08 | BRIDGE CLOSURES | VARIOUS | 27 NOV 08 |
| Milwaukee Harbor, WI | 11/08 | BRIDGE REHABILITATION | 0700-1630/ MON-SAT | 31 MAY 08 |
| Chicago Harbor, IL | 13/08 | INOPERABLE STATUS | VARIOUS | TBD |
| Sturgeon Bay Harbor, WI | 13/08 | BRIDGE CONSTRUCTION | VARIOUS | OCT 2008 |
| Chicago Harbor, IL | 11/08, 14/08 | BRIDGE MAINTENANCE | VARIOUS | 16 APR 08 |
| Calumet Harbor, IL | 15/08 | SCHEDULED ELECTRICAL MAINTENANCE | VARIOUS | 01 JUL 2008 |
| Chicago Harbor, IL | 15/08 | SCHEDULED STRUCTURAL MAINTENANCE | VARIOUS | 17 APR 2008 |
| Sturgeon Bay Harbor, WI | 13/08, 15/08 | BRIDGE CONSTRUCTION | 0600-1700/ MON-SAT | OCTOBER 08 |
| Muskegon Harbor, MI | 16/08 | MAINTENANCE DREDGING | 24 HRS A DAY/ 7 DAYS | 01 JUNE 2008 |
| Chicago Harbor, IL | 16/08 | MECHANICAL REPAIR | 0600-1600 | 25 APR 08 |
| Chicago Harbor, IL | 15/08,16/08 | BRIDGE REHABILITATION | 0700-1500/ MON-FRI | 30 SEP 08 |
| Sturgeon Bay Harbor, WI | 16/08 | BRIDGE CONSTRUCTION | VARIOUS | OCT 2008 |
| <u>LAKE SUPERIOR</u> | | | | |
| Ashtabula River | 13/08 | DREDGING | 24 HRS/ 7 DAYS | 15 JUN 08 |
| <u>FOX RIVER</u> | | | | |
| Oshkosh Harbor, WI | 37/07 | BRIDGE REPAIRS | VARIOUS | 01 MAY 08 |

GREAT LAKES - GENERAL - MARINE EVENTS – SAFETY ZONES – SECURITY ZONES

Events listed below are those events that may have accompanying special local regulations. Mariners transiting these areas should contact the U.S. Coast Guard with any questions and are asked to exercise caution when navigating through the area of the event.

| Location | LNM | Events | Dates | Time (Local) | POC or Sponsor | Number |
|---|------------|---|-----------------------|--------------------------------|---------------------------|----------------|
| <u>ST LAWRENCE SEAWAY - SAFTY ZONE</u> | | | | | | |
| Heart Island | 16/08 | Independence Day Fireworks Display | 04 July 2008 | 2100-2200 | Georgene McKinley | (315) 482-9531 |
| Village of Cape Vincent | 16/08 | French Festival Fireworks | 12 July 2008 | 2130-2230 | Patricia A. Kinckley | (315) 654-4826 |
| Clayton, NY | 16/08 | Clayton Fireworks | 05 July 2008 | 2100-2200 | Joeylynn Ramseier | (315) 778-8293 |
| <u>ST LAWRENCE SEAWAY - SAFTY ZONE</u> | | | | | | |
| Alexandria Bay, NY | 16/08 | Alexandria Bay Poker Run | 21 June 2008 | 1000-1600 | Sheryl Mackey | (416) 702-4316 |
| Alexandria Bay, NY | 16/08 | Pirate Days Invasion | 16 August 2008 | 1400-1600 | Georgene Mckinley | (315) 482-9531 |
| <u>LAKE ONTARIO – SAFETY ZONE</u> | | | | | | |
| Brewerton, NY | 16/08 | Brewerton Fireworks | 03 July 2008 | 2130-2200 | Nick Chervinsky | (315) 727-4318 |
| Baldwinsville, NY | 16/08 | Baldwinsville | 04 July 2008 | 2100-2130 | Bob Kesel | (315) 224-9212 |
| Sodus Point, NY | 16/08 | Village Fireworks | 03 July 2008 | 2200-2230 | Frank Wackerle | (315) 573-2405 |
| Syracuse, NY | 16/08 | City of Syracuse Fireworks Celebration | 27 June 2008 | 2130-2230 | Mary Beth Roach | (315) 382-7776 |
| Rochester, NY | 16/08 | Rochester Harborfest | 21 June 2008 | 2130-2200 | James Farr | (585) 428-6866 |
| Baldwinsville, NY | 16/08 | American Carp Society Northeast Regionals Fireworks | 17 May 2008 | 2100-2200 | Bob Kesel | (315) 224-9212 |
| <u>LAKE ONTARIO - MARINE EVENTS</u> | | | | | | |
| Baldwinsville, NY | 16/08 | Seneca Riverdays | 11-12 July 2008 | | Tim Horan | (315) 635-3666 |
| Palmyra, NY | 16/08 | Daily Crew Practices | 01 May – 01 Nov 2008 | 1600-2100/M-F 0600-1200/SAT | Bruce Weick | (585) 377-8213 |
| Pittsford, NY | 16/08 | Pittsford Regatta | 31 May – 01 June 2008 | 0830-1600 | Howard Weiner | (585) 733-4457 |
| Rochester, NY | 16/08 | Shorline Triathlon | 27 July 2008 | 0815-110 | David or Ellen Boutillier | (585)732-1956 |
| Rochester, NY | 16/08 | Rochester Harborfest Parade of Lights | 20 June 2008 | 2000-2200 | James Farr | (585) 428-6866 |
| Rochester, NY | 16/08 | Ultimate Marine Group J/22 World Championship | 17-24 August 2008 | 0900-1800 | Mark Seretl | (585) 248-5490 |
| Oneida, NY | 16/08 | Madcatter 2008 | 16-18 May 2008 | 0800-1700 | Kathy Miles | (315) 491-6390 |
| Syracuse, NY | 16/08 | Syracuse Chargers Junior Invitational Regatta | 18 May 2008 | 0700-1500 | Larry Laszlo | (315) 480-7247 |
| Oswego, NY | 16/08 | Oswego Yacht Club Hospice Cup Regatta | 07 June 2008 | 0800-1900 | John Gary | (315) 343-9459 |
| Oswego, NY | 16/08 | Oswego Yacht Club Blessing of the Fleet | 08 June 2008 | 1200-1500 | John Gary | (315) 343-9459 |
| Oswego, NY | 16/08 | Oswego Yacht Club Sail Oswego Regatta | 25-26 July 2008 | 1200-1500 | John Gary | (315) 343-9459 |
| Oswego, NY | 16/08 | Oswego Yacht Club all J-Boat Regatta | 16-17 August 2008 | 1200-1500 | John Gary | (315) 343-9459 |
| Pittsford, NY | 16/08 | Annual Practice Schedule of Pittsford Crew | April-November | | Betsy Twohig-Barrett | (585) 264-0562 |
| Rochester, NY | 16/08 | Rochester Yacht Club Fleet Review | 26 May 2008 | 1450-1900 | Frank Shumway | (585) 721-2653 |
| | | | | | Karen Gerwitz | (585) 342-5511 |
| Oswego Harbor, NY | 16/08 | Oswego Yacht Club Weekly Races | May-Nov | | John Gary | (315) 598-5646 |
| <u>NIAGARA RIVER - MARINE EVENTS</u> | | | | | | |
| North Tonawanda, NY | 16/08 | Thunder on Niagara | 31 May-01 June 2008 | 1100-1800 | Dan Kanfoush | (716) 284-9358 |
| Grand Island, NY | 16/08 | Paddle Up Niagara 2008 | 26 July 2008 | 1200-1500 | Paul Leuchner | (716) 704-0546 |
| Tonawanda, NY | 16/08 | Duck Race | 19 July 2008 | 1500-1530 | Lynne M. Smith | (716) 285-3403 |

| | | | | | | |
|------------------|-------|-------------------|----------------|-----------|----------------|----------------|
| Grand Island, NY | 16/08 | Antique Boat Show | 06 August 2008 | 1000-1600 | Tom Frauenheim | (716) 773-7629 |
|------------------|-------|-------------------|----------------|-----------|----------------|----------------|

LAKE ERIE - MARINE EVENTS

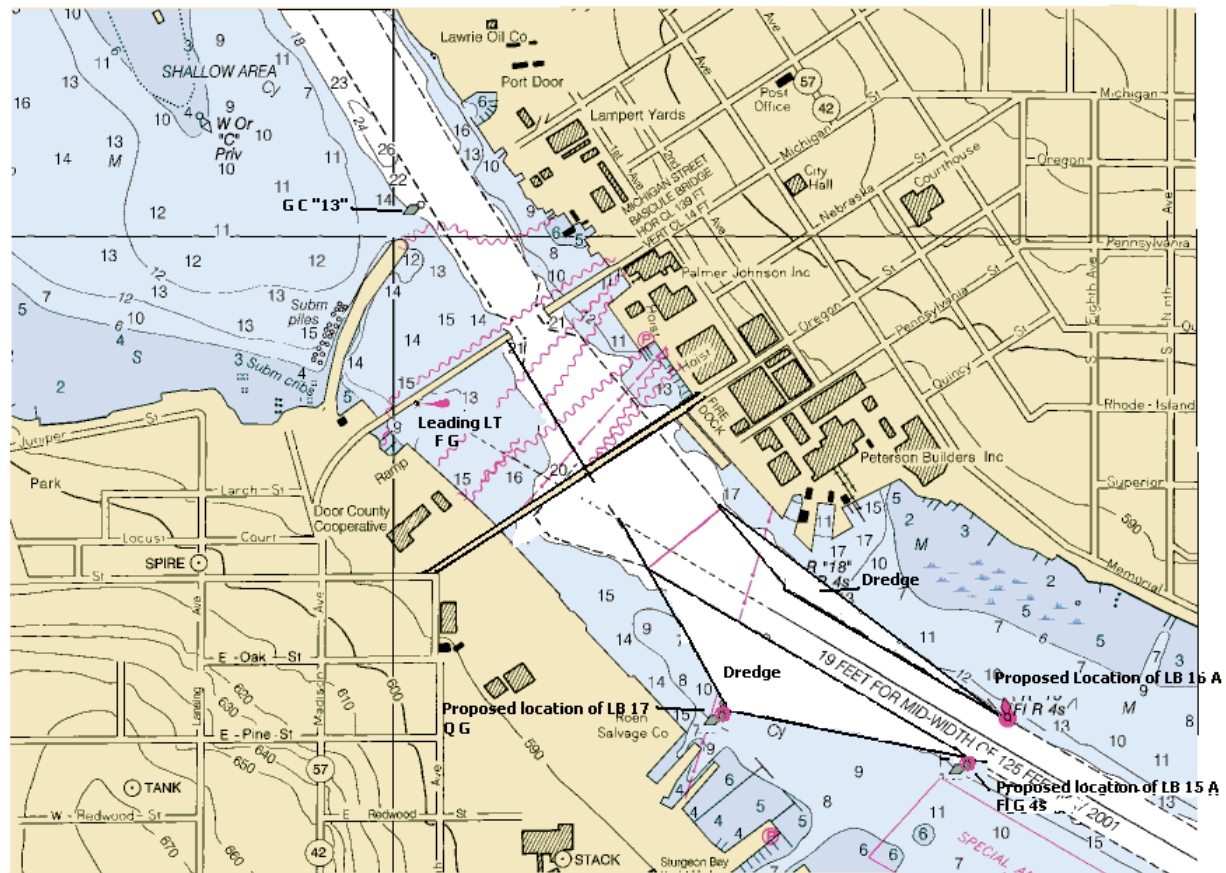
| | | | | | | |
|----------------------|-------|--|--------------------|---------------|-----------------------|----------------|
| Mentor Headlands, OH | 07/08 | Triathlon | 10 Aug 08 | 0600-1100 | Mickey Rzymek | |
| Cleveland, OH | 08/08 | FLW Fishing Tournament | 24-27 Sep 08 | 0700-1500 | Kevin Hunt | |
| Cleveland, OH | 08/08 | Y-ME Breast Cancer Walk | 11 May 08 | 0900-1030 | Darby Bentoff O'Brien | |
| Buffalo, NY | 16/08 | Great Lakes International Challenge Cup Race | 13-15 June 2008 | 0900-1600 | Timothy M. Hunt | (716) 440-7108 |
| Presque Isle Bay | 16/08 | Mercyhurst Prep Regatta | 12 May 2008 | 0700-1600 | David Geiger | (814) 882-8358 |
| Erie, PA | 16/08 | Swim the Bay Event | 28 June 2008 | 0900-1100 | Patricia Davis | (814) 450-9526 |
| Erie, PA | 16/08 | US Sailing Team Racing Championships | 15-17 August 2008 | 0800-1800 | David McBrier | (814) 455-4799 |
| Buffalo, NY | 16/08 | Buffalo Harbor Sailing Club 2008 Race Season | 15 May-06 Aug 2008 | various times | Rick Lenard | (716) 856-6314 |
| Grand Island, NY | 16/08 | Western New York Fun Run | 14 June 2008 | 1000-1600 | Humphrey Stinson | (716) 946-0332 |
| Buffalo, NY | 16/08 | BYC J/22 Raw Bar Regatta | 19-20 July 2008 | 0900-1630 | Joe Gelsomino | (716) 861-8323 |
| Buffalo, NY | 16/08 | Queen City Regatta and Mayors Cup Regatta | 9-10 Aug 2008 | 0900-1700 | Timothy M. Hunt | (716) 440-7108 |

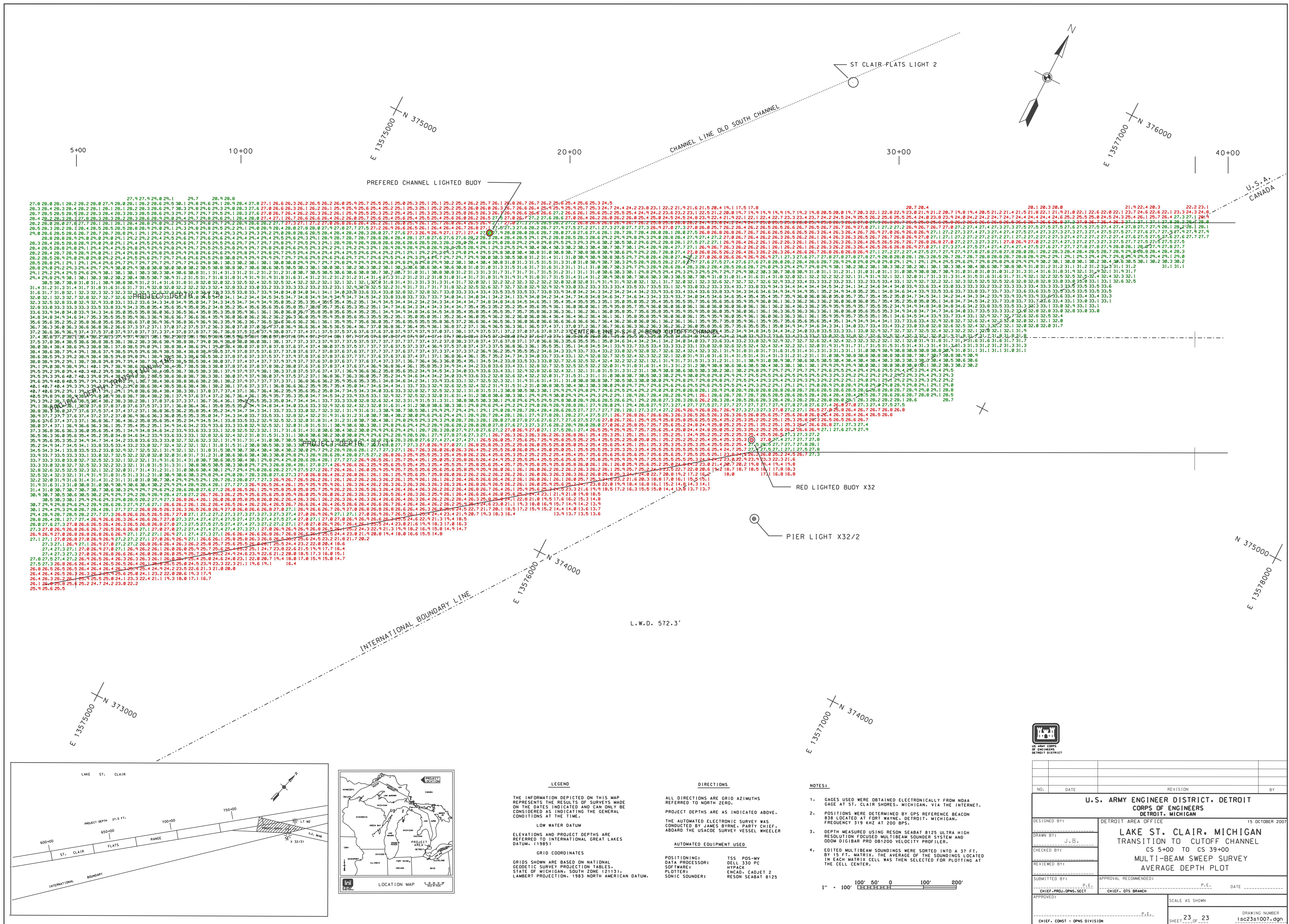
LAKE ERIE - SAFTY ZONE

| | | | | | |
|----------------|-------|-----------------------|-----------|-----------|---------------|
| Cleveland , OH | 08/08 | Queens Cup Canoe Race | 06 Jun 08 | 1230-1700 | John Harkness |
|----------------|-------|-----------------------|-----------|-----------|---------------|

LAKE MICHIGAN - SAFTY ZONE

| | | | | | | |
|---------------------|-------|------------------------------|-------------|-----------|----------------------|----------------|
| Muskegon, MI | 15/08 | Michigan Aerospace Challenge | 26 April 08 | 0800-1800 | Sector Lake Michigan | (414) 747-7182 |
| Holland, MI | 15/08 | Tulip Time Festival | 02 May 08 | 1900-2300 | Sector Lake Michigan | (414) 747-7182 |
| Sheboygan, MI | 15/08 | Rockets For Schools | 10 May 08 | 1200-1800 | Sector Lake Michigan | (414) 747-7182 |
| DePere, WI | 15/08 | Celebrate DePere | 24 May 08 | 1200-2100 | Sector Lake Michigan | (414) 747-7182 |
| Milwaukee, WI | 15/08 | River Splash | 30 May 08 | 1930-2100 | Sector Lake Michigan | (414) 747-7182 |
| Milwaukee, WI | 15/08 | Pride Fest | 30 May 08 | 1930-2100 | Sector Lake Michigan | (414) 747-7182 |
| Port Washington, WI | 15/08 | Port Washington Pirate Fest | 07 June 08 | 1900-2100 | Sector Lake Michigan | (414) 747-7182 |
| Spring Lake, MI | 15/08 | Spring Lake Heritage Fest | 16 June 08 | 2200-2300 | Sector Lake Michigan | (414) 747-7182 |
| Racine, WI | 15/08 | Racine Harbor Fest | 20 June 08 | 2130-2200 | Sector Lake Michigan | (414) 747-7182 |
| Elberta, MI | 15/08 | Elberta Solstice Fest | 20 June 08 | 2130-2300 | Sector Lake Michigan | (414) 747-7182 |





Publication—National Ocean Service—U.S. Coast Pilot 6, Great Lakes, and their connecting waterways, 2008 (38th) Edition. Change No. 02.

Coast Pilot 6 38th Ed 2008 Corrections

Page 45-Table, Insert after Part 26—Vessel Bridge-to-Bridge Radiotelephone Regulations:

Part 70 Interference with or Damage to Aids to Navigation
(33 CFR 70)

Page 59-Paragraph 281, line 13; read:
by Means of Radio, 1973.”

Part 70—Interference with or Damage to Aids to Navigation

§70.05–10 Revocation of License

Every master, pilot, and engineer, or person or persons acting in such capacity, respectively, on board any vessel who shall willfully injure or destroy an aid to navigation established or maintained by the United States shall be deemed guilty of violating the provisions of §70.05-1 and shall upon conviction be punished as provided in §70.05-5 and shall also have his license revoked or suspended for a term to be fixed by the judge before whom tried and convicted.

§70.05–20 Report Required

Whenever any vessel collides with an aid to navigation established and maintained by the United States or any private aid to navigation established or maintained in accordance with Part 64, 66, 67 or 68 of this subchapter, or is connected with any such collision, it shall be the duty of the person in charge of such vessel to report the accident to the nearest Officer in Charge, Marine Inspection, in accordance with 46 CFR 4.

(33 CFR 70)

Page 74-Paragraph 668: Delete.
(CL 320/08)

Page 300-Paragraph 25, read:

Chenal Ecarte range lights, in line bearing 138.3°, are on the south shore of Chenal Ecarte near its junction with St. Clair River. The front light (746) is shown from a white circular tower, 12 feet (3.7 m) high, with a fluorescent-orange triangular daymark

with a black vertical stripe. The rear light (747) is shown from a white circular tower, 26 feet (7.9 m) high, with a fluorescent-orange triangular daymark with black vertical stripe. The lights are visible only on the range.

(LL/07; CSD-CEN304-31/96)

Page 386-Paragraph 467: Delete.
(NOS 14929)

Page 480-Paragraph 213, line 4 through Paragraph 215, line 3; read:

0.4 mile to the head of the project. The outer ends of the piers are marked by lights; a fog signal is at the W pierhead light. In May 2007, the controlling depth was 15.3 feet in the entrance and between the piers to the head of the project (except for lesser depths to 8.3 feet at the head.) Shoaling in the harbor occurs annually during the winter.

Bridges

A railroad bridge, in about 46°52'03"N., 89°19'03"W., has a fixed span with a clearance of 8 feet. The SR64 highway bridge, about 200 feet above the railroad bridge, has 3 fixed spans with a least reported clearance of 33 feet.

Small-craft facilities

A public docking facility developed by the Michigan State Waterways Commission is in a basin on the W side of the river, 0.2 mile above the head of the dredged channel. In ...

(CL 320/08)

Page 504-Table; item 6: Delete.
(CL 1480/95: BP 156894)

Page 504-Table; item 5: read:

| No. | Location and Name | Kind | Miles* | Clear with in feet of draw or span openings* | | | Clear height in feet above Water Datum | | Remarks |
|-----|---------------------------------|---------|--------|--|------|--------|--|------|--------------------|
| | | | | Right | Left | Center | Low | High | |
| 5 | Newburgh: Beacon Bridges (I-84) | Highway | 62.0 | 601 | 601 | 960 | | 147 | Dual Fixed Note 2. |

Note 2.—The vertical clearance of 147 feet is for a middle width of 760 feet in the center span. The bridges have a maximum vertical clearance of 172 feet at the center of the span.

(CL 1480/95; BP 156894)

Page 504-Table; item 7: read:

| No. | Location and Name | Kind | Miles* | Clear with in feet of draw or span openings* | | | Clear height in feet above Water Datum | | Remarks |
|-----|---|---------|--------|--|------|--------|--|------|---------------------|
| | | | | Right | Left | Center | Low | High | |
| 7 | Poughkeepsie: Mid-Hudson Bridge (US 44) | Highway | 75.6 | | | 1,494 | | 129 | Suspension. Note 3. |

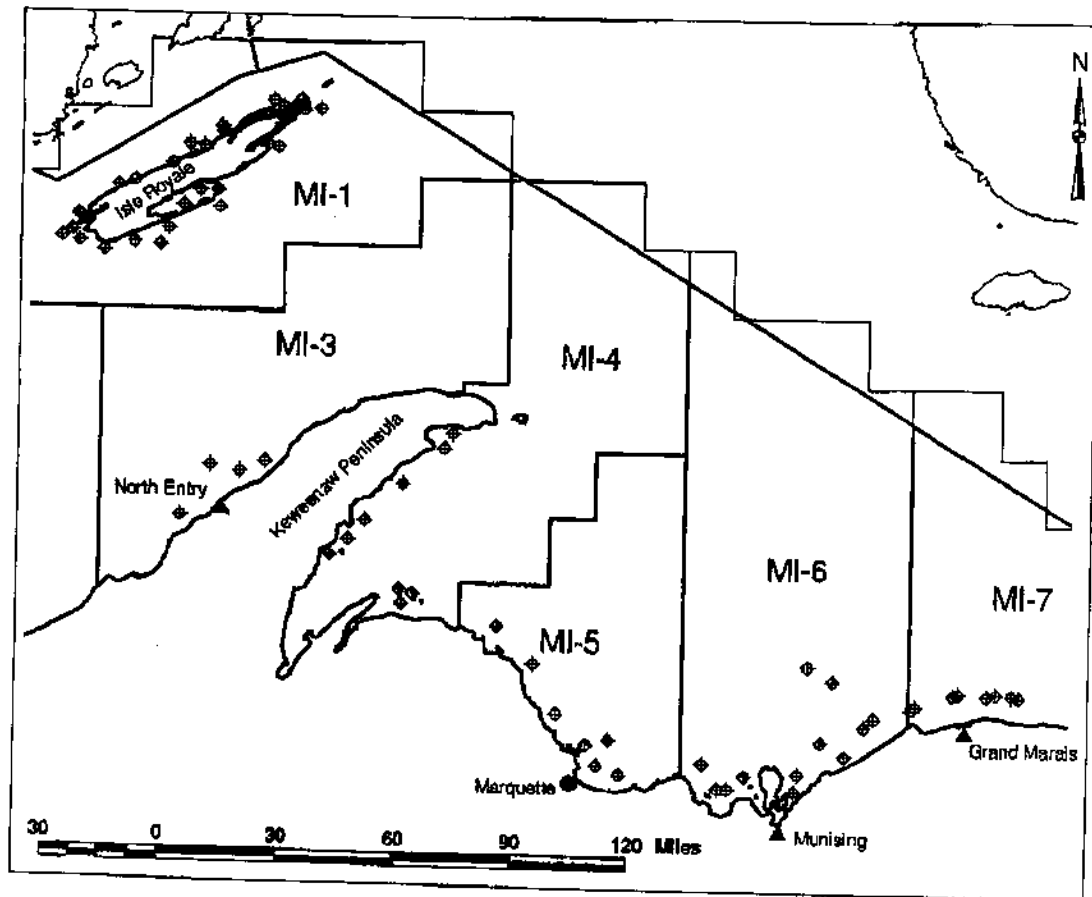
Note 3.—The vertical clearance of 129 feet is for a middle width of 1,100 feet (the width of the navigation channel). The bridge has a maximum vertical clearance of 134 feet at the center of the span.

(CL 29/99; CL 1524/98)

2008 spring lake trout survey and special study schedule for Marquette Fisheries Research Station (MFRS), Fisheries Division, Michigan Department of Natural Resources.

| Dates* | Region | Stations | Fished by |
|---|---------------------------------------|--|---------------------|
| 21-30 April | Munising | Grand Portals, Big Reef, Au Train Pt., Wood Island, Grand Island | R/V Lake Char, MFRS |
| 01-07 May | Marquette, Big Bay, Huron Islands/Bay | White Rocks, Shot Pt., Big Bay, Marquette, Huron Islands, Point Abbaye | R/V Lake Char, MFRS |
| 06-09 May | North Entry | North Entry of portage canal | R/V Lake Char, MFRS |
| 12-19 May | Isle Royale | All areas around Isle Royale | R/V Lake Char, MFRS |
| 19-21 May | Keweenaw Bay | Traverse Island, Bete Grise | R/V Lake Char, MFRS |
| 01 May-01 June | Grand Marais | Grand Marais, Deer Park, Au Sable Point | CORA |
| 1 st week of each month, May-Dec | Marquette | 3 miles ENE of lower harbor; 5 miles NE of upper harbor. | R/V Lake Char, MFRS |

* dates may shift if there are weather delays.



Spring lake trout survey and special study sampling stations for 2008.