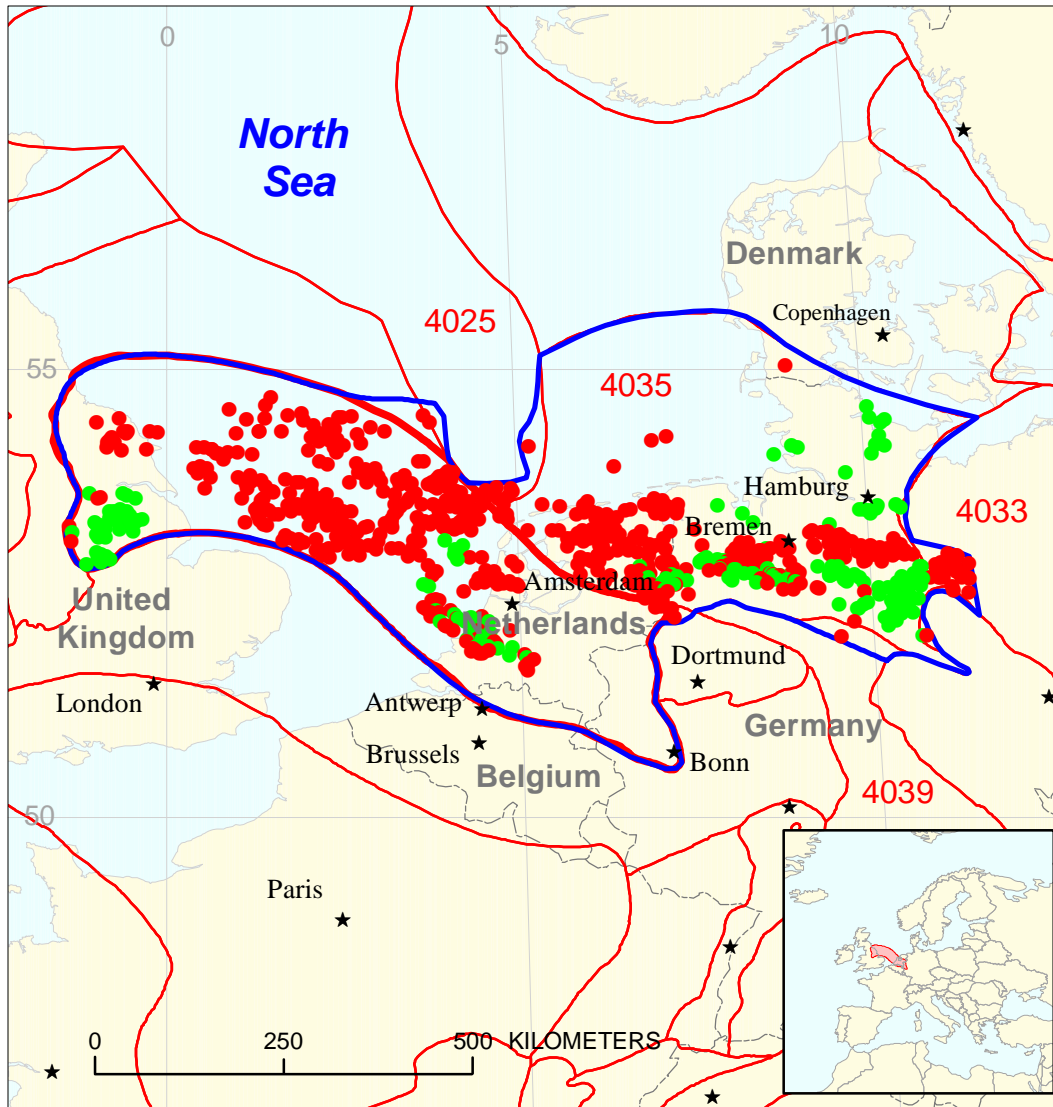






# Anglo-Dutch Basin Geologic Province 4036



 Carboniferous-Rotliegend  
Total Petroleum System 403601

-  Carboniferous-Rotliegend Total Petroleum System 403601
-  Anglo-Dutch Basin Geologic Province 4036
-  Other geologic province boundary

**Anglo-Dutch Basin, Province 4036**  
**Assessment Results Summary - Allocated Resources**

[MMBO, million barrels of oil. BCFG, billion cubic feet of gas. MMBNGL, million barrels of natural gas liquids. MFS, minimum field size assessed (MMBO or BCFG). Prob., probability (including both geologic and accessibility probabilities) of at least one field equal to or greater than the MFS. Results shown are fully risked estimates. For gas fields, all liquids are included under the NGL (natural gas liquids) category. F95 represents a 95 percent chance of at least the amount tabulated. Other fractiles are defined similarly. Fractiles are additive under the assumption of perfect positive correlation. Shading indicates not applicable]

Code and Field Type	MFS	Prob. (0-1)	Undiscovered Resources											
			Oil (MMBO)				Gas (BCFG)				NGL (MMBNGL)			
			F95	F50	F5	Mean	F95	F50	F5	Mean	F95	F50	F5	Mean

**4036 Total: Assessed onshore portions of Anglo-Dutch Basin Province**

Oil Fields		1.00	8	23	50	26	8	22	52	25	0	0	1	1
Gas Fields							762	1,850	3,283	1,922	2	5	10	5
Total		1.00	8	23	50	26	770	1,872	3,335	1,947	2	5	11	6

**4036 Total: Assessed offshore portions of Anglo-Dutch Basin Province**

Oil Fields		1.00	13	55	133	62	4	19	51	22	0	1	4	2
Gas Fields							2,828	11,662	27,682	13,006	8	34	88	39
Total		1.00	13	55	133	62	2,833	11,682	27,733	13,029	8	35	92	41

**4036 Grand Total: Assessed portions of Anglo-Dutch Basin Province**

Oil Fields		1.00	22	79	184	88	12	42	103	48	0	2	5	2
Gas Fields							3,591	13,512	30,965	14,928	10	38	98	44
Total		1.00	22	79	184	88	3,603	13,554	31,068	14,976	10	40	103	46

**Anglo-Dutch Basin, Province 4036**  
**Assessment Results Summary - Allocated Resources**

[MMBO, million barrels of oil. BCFG, billion cubic feet of gas. MMBNGL, million barrels of natural gas liquids. MFS, minimum field size assessed (MMBO or BCFG). Prob., probability (including both geologic and accessibility probabilities) of at least one field equal to or greater than the MFS. Results shown are fully risked estimates. For gas fields, all liquids are included under the NGL (natural gas liquids) category. F95 represents a 95 percent chance of at least the amount tabulated. Other fractiles are defined similarly. Fractiles are additive under the assumption of perfect positive correlation. Shading indicates not applicable]

Code and Field Type	MFS	Prob. (0-1)	Undiscovered Resources											
			Oil (MMBO)				Gas (BCFG)				NGL (MMBNGL)			
			F95	F50	F5	Mean	F95	F50	F5	Mean	F95	F50	F5	Mean

**403601 Carboniferous-Rotliegend Total Petroleum System**

40360101 Southern Permian Basin-U.K. Onshore Assessment Unit (100% of undiscovered oil fields and 100% of undiscovered gas fields allocated to ONSHORE province 4036)

Oil Fields	1	1.00	3	7	13	7	3	8	17	9	0	0	1	1
Gas Fields	6						9	21	39	22	0	1	2	1
Total			1.00	3	7	13	7	11	29	56	31	1	1	3

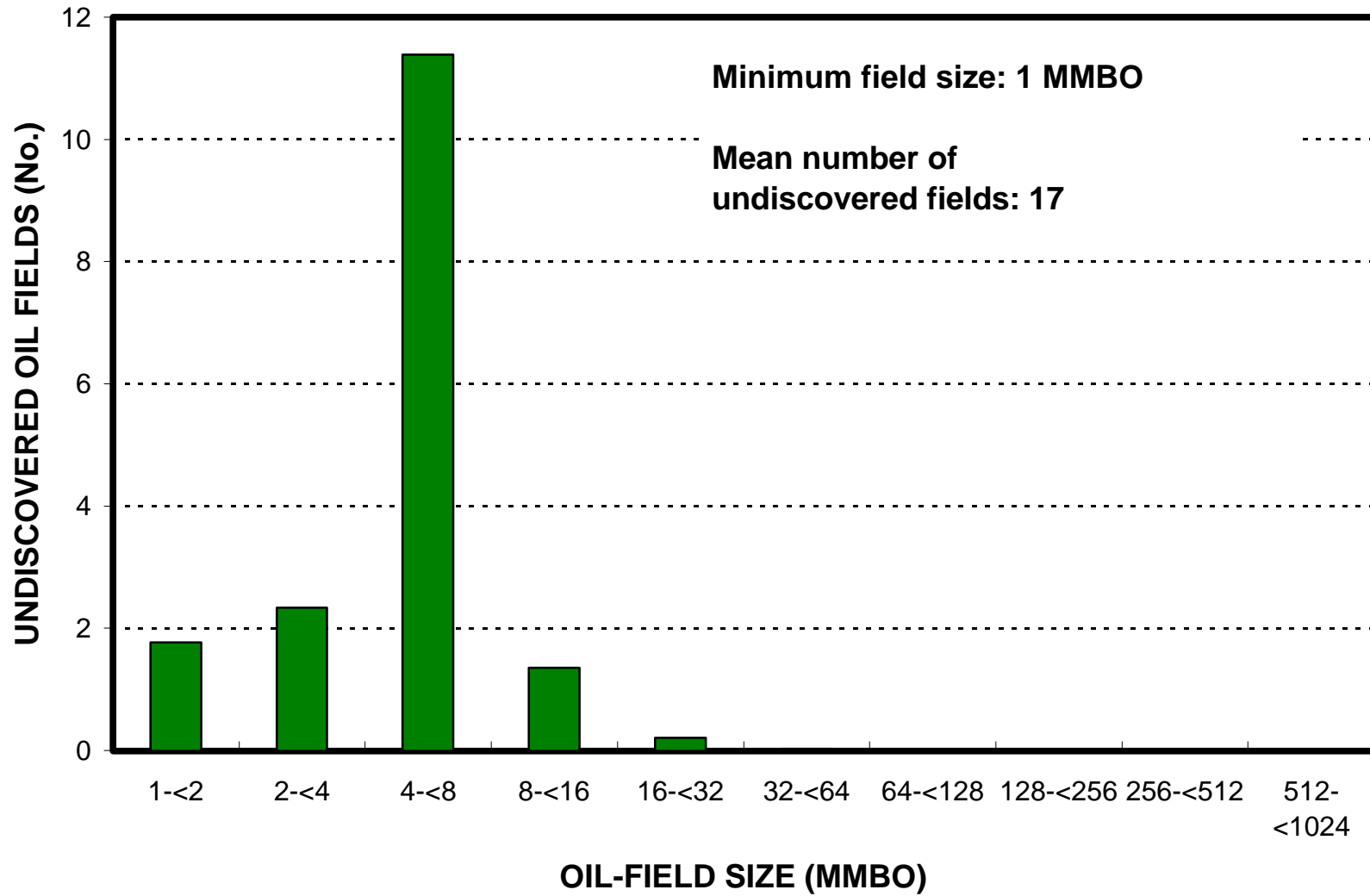
40360102 Southern Permian Basin-Europe Onshore Assessment Unit (25% of undiscovered oil fields and 15% of undiscovered gas fields allocated to ONSHORE province 4036)

Oil Fields	1	1.00	6	17	37	19	5	15	35	17	0	0	0	0
Gas Fields	6						754	1,829	3,244	1,900	1	4	8	4
Total			1.00	6	17	37	19	759	1,843	3,280	1,916	1	4	8

40360103 Southern Permian Basin-Offshore Assessment Unit (100% of undiscovered oil fields and 100% of undiscovered gas fields allocated to OFFSHORE province 4036)

Oil Fields	4	1.00	13	55	133	62	4	19	51	22	0	1	4	2
Gas Fields	24						2,828	11,662	27,682	13,006	8	34	88	39
Total			1.00	13	55	133	62	2,833	11,682	27,733	13,029	8	35	92

# Anglo-Dutch Basin, Province 4036 Undiscovered Field-Size Distribution



# Anglo-Dutch Basin, Province 4036 Undiscovered Field-Size Distribution

