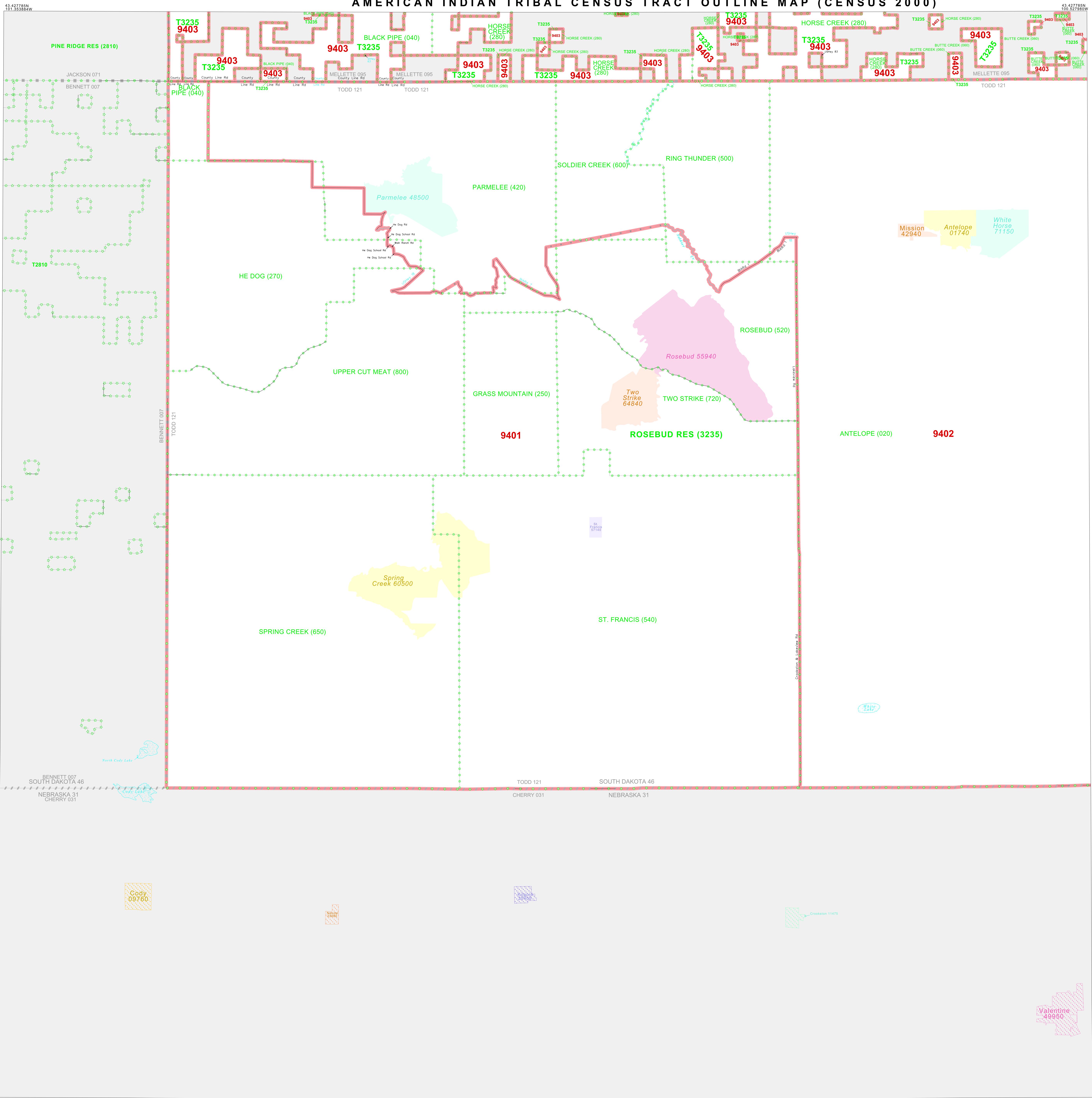


AMERICAN INDIAN TRIBAL CENSUS TRACT OUTLINE MAP (CENSUS 2000)



LEGEND

SYMBOL	NAME STYLE
*****	INTERNATIONAL
*****	AIR (FEDERAL)
*****	Trust Land
*****	OTSA / TDSA
*****	AMERICAN INDIAN TRIBAL SUBDIVISION
*****	AIR (State)
*****	SDA/ISA
-----	STATE (or statistically equivalent entity)
-----	COUNTY (or statistically equivalent entity)
-----	Place within Subject Entity
-----	Incorporated Place / GDP
-----	Place outside of Subject Entity
-----	Incorporated Place / GDP
-----	Tribal Census Tract¹

ABBREVIATION REFERENCE: AIR = American Indian Reservation; Trust Land = Off-Reservation Trust Land; OTSA = Oklahoma Tribal Statistical Area; TDSA = Tribal Designated Statistical Area; SDA/ISA = State Designated American Indian Statistical Area; GDP = Census Designated Place

FEATURES

All Roads	Stream/Shoreline
Railroad	Inter-Tribal Stream
Pipe/Pump Line	River/Lake
Physical Feature	Glacier
Nonvisible Boundary	

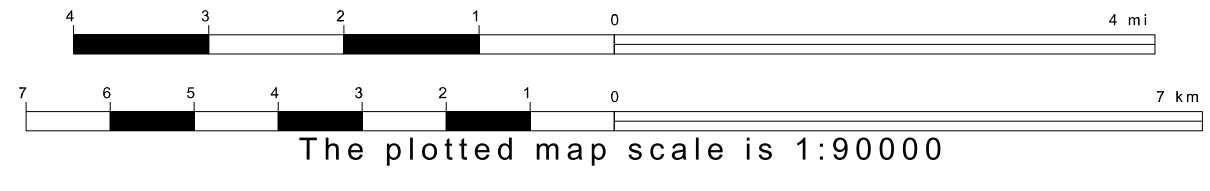
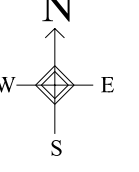
Inset **Out Area**

¹ This map shows tribal census tract boundaries and numbers. A tribal census tract is a type of census tract defined within a federally recognized American Indian reservation or off-reservation trust land for the purpose of providing data based on an American Indian hierarchy rather than by state and county.

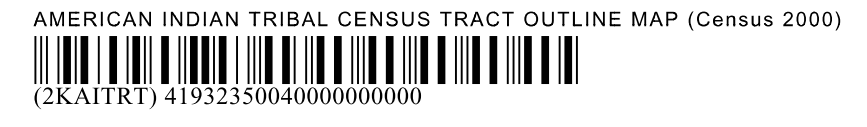
OFF-RESERVATION TRUST LAND NAMES
 T2810 Pine Ridge
 T3235 Rosebud

43 427785N
101 353884W

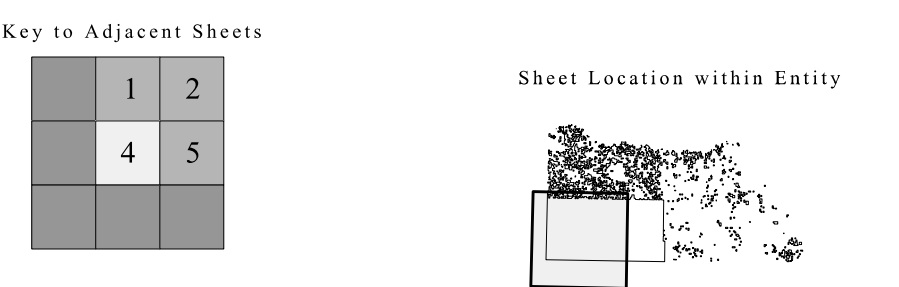
43 427785N
100 527980W



ENTITY TYPE: American Indian Reservation
 NAME: Rosebud Reservation and Off-Reservation Trust Land (3235)
 ST: South Dakota



All legal boundaries and names are as of January 1, 2000. The boundaries shown on this map are for Census Bureau statistical data collection and tabulation purposes only; their depiction and designation for statistical purposes does not constitute a determination of jurisdictional authority or rights of ownership or entitlement. Source: U.S. Census Bureau's TIGER database (Census 2000). Projection: State-based Albers Equal Area. U.S. DEPARTMENT OF COMMERCE Economics and Statistics Administration U.S. Census Bureau



SHEET 4 OF 6 PARENT SHEETS
 TOTAL SHEETS: 7 (Index 1; Parent 6; Inset 0)