



U.S. Department  
of Homeland Security  
**United States  
Coast Guard**

## LOCAL NOTICE TO MARINERS

**District: 9**

**Week: 24/08**

Issued by: Commander (dpw)  
Ninth Coast Guard District  
1240 East Ninth Street,  
Cleveland, OH 44199-2060  
Telephone: (216) 902-6074

Direct questions about this LNM to the above address.

\*District Nine Internet Address\* <http://www.uscg.mil/d9/uscgd9.html>

\*\* Navigation Information Service watchstander, 24 hours a day at (703) 313-5900 \*\* \*\*Internet Address\*\* <http://www.navcen.uscg.gov/>

Light List Reference: Commandant Publication P16502.7, VOL VII, 2007 Edition

Coast Pilot Reference: 2007 U.S. Coast Pilot 6 Great Lakes 35th Edition

Coast Pilot Corrections Reference download web page: <http://nauticalcharts.noaa.gov/nsd/cpdownload.htm>

The Local Notice to Mariners is available on the Internet at <http://www.navcen.uscg.gov/lnm/d9/default.htm>. You will also have links to other government agencies- web pages including the US Army Corps of Engineers and the National Ocean Service.

REPORT DISCREPANCIES IN AIDS TO NAVIGATION TO THE NEAREST COAST GUARD UNIT

The Ninth District and all Sector offices for their areas of responsibility issue a BROADCAST NOTICE TO MARINERS.

The following Broadcast Notice to Mariners have been incorporated into this week's Local Notice to Mariners:

Sector Buffalo, NY - B053-08 through B059-08

Ninth District - C064-08 through C069-08

Sector Detroit, MI - D065-08 through D070-08

Sector Lake Michigan, WI - M191-08 through M205-08

Sector Sault Ste Marie, MI - S112-08 through S115-08

### ABBREVIATIONS

#### A through I

ACOE - Army Corps of Engineers  
ADRIFT - Buoy Adrift  
AICW - Atlantic Intracoastal Waterway  
B - Buoy  
BKW - Breakwater  
B - Refer to Light List  
BNM - Broadcast Notice to Mariner  
CG - Refer to Light List  
CHAN - Channel  
CGD - Coast Guard District  
CR - Refer to Light List  
C/O - Cut Off  
CONT - Contour  
CONSTR - Construction  
CRK - Creek  
CONST - Construction  
DBN - Daybeacon  
DBD/DAYBD - Dayboard  
DBN/DEST - Daybeacon Destroyed  
DBN IMCH - Daybeacon Improper Characteristic  
DISCON - Discontinued  
DMGD - Daybeacon Damaged  
EST - Established Aid  
EVAL - Evaluation  
EXT - Extinguished  
FL - Flashing  
FS - Fog Signal

#### K through M

KBG - Refer to Light List  
KBG-I - Refer to Light List  
KBR - Refer to Light List  
KBR-I - Refer to Light List  
KBW - Refer to Light List  
KGB - Refer to Light List  
KGB-I - Refer to Light List  
KGR - Refer to Light List  
KGR-I - Refer to Light List  
KGW - Refer to Light List  
KGW-I - Refer to Light List  
KRB - Refer to Light List  
KRB-I - Refer to Light List  
KRG - Refer to Light List  
KRG-I - Refer to Light List  
KRW - Refer to Light List  
KWB - Refer to Light List  
KWB-I - Refer to Light List  
KWG - Refer to Light List  
KWG-I - Refer to Light List  
KWR - Refer to Light List  
KWR-I - Refer to Light List  
LAT - Latitude  
LB - Lighted Buoy  
LBB - Lighted Bell Buoy  
LHB - Lighted Horn Buoy  
LGB - Lighted Gong Buoy  
LONG - Longitude

#### N through Z

NB - Refer to Light List  
N/C - Not Charted  
ND - Refer to Light List  
NG - Refer to Light List  
NGA - National Geospatial-Intelligence Agency  
NL - Refer to Light List  
NO - Number  
NOS - National Ocean Service  
NR - Refer to Light List  
NW - Refer to Light List  
NW - Notice Writer  
NY - Refer to Light List  
OBSCU - Obscured  
OBST - Obstruction  
OFF STA - Off Station  
OBSTR - Obstruction  
PRIV - Private Aid  
RBN - Radio Beacon  
REBUILT - Aid Rebuilt  
RECOVERED - Aid Recovered  
RED - Red Buoy  
REDINT - Reduced Intensity  
RRL - Range Rear Light  
RELIGHTED - Aid Relighted  
RELOC - Relocated  
RESET ON STATION - Aid Reset on Station  
RFL - Range Front Light  
RIV - River

HAZ - Hazard to Navigation  
HBR - Harbor  
HOR - Horizontal Clearance  
HT - Height  
ICW - Intracoastal Waterway  
IMCH - Improper Characteristic  
INL - Inlet  
INOP - Not Operating  
INT - Intensity  
ISL - Islet

LNM - Local Notice to Mariners  
LT - Light  
LT CONT - Light Continuous  
LWB - Lighted Whistle Buoy  
LWP - Left Watching Properly  
MISS - Missing  
MR - Refer to Light List  
MR-I - Refer to Light List

SEC - Section  
SG - Green Square  
SG-SY - Green Square with Yellow Square  
SHL - Shoaling  
SND - Sound  
SS - Sound Signal  
TEMP - Temporary Aid Change  
TMK - Topmark  
St M - Statute Mile  
TR - Red Triangle  
TRLB - Temporarily Replaced by Lighted Buoy  
TRLT - Temporarily Replaced by Light  
TR-TY - Red Triangle with Yellow Triangle  
TRUB - Temporarily Replaced by Unlighted Buoy

Additional Abbreviations Specific to this LNM Edition:

DMGD - Damaged  
MSLD SIG - Misleading Signal  
REDUCED INT DAY - Burning During the Day  
SS - Sound Signal

---

---

## SECTION I - SPECIAL NOTICES

This section contains information of special concern to the Mariner.

---

### USACOE NOTICE TO NAVIGATION INTERESTS

All recent Federal Channels conditions that have conditional surveys can be found can be seen at the USACE Detroit District web site at: <http://www.lre.usace.army.mil/who/operationsofficehomepage/latestnotices/index.cfm?> and <http://www.lre.usace.army.mil/who/operationsofficehomepage/noticetonavigationinterest/>, the USACE Chicago District website at: [http://www.lrc.usace.army.mil/co%2Do/Nav\\_Notice.htm](http://www.lrc.usace.army.mil/co%2Do/Nav_Notice.htm), and the USACE Buffalo District website at: <http://www.lrb.usace.army.mil/>

LNM: 11/07

### ST LAWRENCE SEAWAY - NAVIGATION NOTICES

All recent notices that have been created by the St Lawrence Seaway System can be found at the following web addresses: <http://www.greatlakes-seaway.com/en/seaway/index.html>

LNM: 13/07

### The Dates of Latest Editions, Nautical Charts and Miscellaneous Maps

The Dates of Latest Editions, Nautical Charts and Miscellaneous Maps, dated October 1, 2007, published by the National Ocean Service, is available for issue. It may be obtained for free by mail from the FAA/National Aeronautical Charting Office, Distribution Division AVN-530, 10201 Good Luck Road, Glenn Dale MD, 20769-9700, by telephone at 1-800-638-8972, or from your local authorized nautical chart sales agent. This is a quarterly publication listing the most recent editions of nautical charts, miscellaneous maps and publications relating to navigation, weather, etc. with brief descriptions and newly updated prices for most of the publications listed. Much of this information may also be obtained online at: <http://chartmaker.ncd.noaa.gov/mcd/dole.htm>

LNM: 43/07

### GREAT LAKES - Great Lakes Water Levels

The expected water levels on the Great Lakes for June 20, 2008. Connecting Channels and the St. Lawrence River, given in inches above (+) or below (-) Low Water Datum (LWD). LWD is a plane of reference used on a navigation chart. It is also known as chart Datum.

Great Lakes:

Lake Ontario +37, Lake Erie +31, Lake St. Clair +22, Lake Michigan-Huron +4, Lake Superior +3.

St Lawrence River:

Above Long Sault Dam +48, Above Iroquois Dam +37, Ogdensburg +43, Alexandria Bay +38, Head of River at Cape Vincent +37.

Detroit River:

Lake Erie at Pelee Passage +31, Mouth of River at Gibraltar +28, Head of River above Belle Isle +22

St. Clair River:

Mouth of River at St. Clair Flats +22, Algonac +19, St. Clair +13, Blue Water Bridge +8, Head of River at Fort Gratiot +4,

Lake Huron Approach Channel +4.

St. Marys River:

Mouth of River at Detour +4, West and Middle Neebish +6, Head of Little Rapids +1, U.S. Slip -4 Above Locks +5,

Head of River at Point Iroquois +3.

Available water depth is determined for a location by adding (if +) or subtracting (if -) the amount from the above to the water depth shown on National Oceanic and Atmospheric Administration (NOAA) navigational charts. Caution: Depths so determined are representative of a still water surface elevation, disturbed by neither wind nor other causes. Depth, however, may be reduced or increased as much as several feet for short periods of time due to these disturbances, or when sections of channels develop shoals. Vessel masters should refer to the Local Notice to Mariners for extent of shoaling and scattered bedrock projections in all channels. For further information direct inquires to: Department of the Army, Detroit District Corps of Engineers P. O. Box 1027, Detroit, MI 48231, (313) 226-6443. Additional information can be found on the U.S. Army Corps of Engineers Information Center website at <http://www.lre.usace.army.mil/greatlakes/hh/greatlakeswaterlevels/waterlevelforecasts/connectingchannelsforecasts/index.cfm?>.

LNM: 24/08

**NEW YORK STATE CANAL SYSTEM NOTICE TO MARINERS - Champlain Canal -Chart 14786**

Mariners are advised that a strong crosscurrent may affect vessel maneuverability immediately above Lock C-2 in Mechanicville. This crosscurrent is related to operations at an adjacent hydroelectric facility not under ownership or control of the Canal Corporation. Vessels should remain mid channel and stay well clear of cribbing clusters when transiting this area. Work has been completed at Lock E-28A in Lyons. The lock is open for navigation.

LNM: 32/07

**LAKE ONTARIO - Irondequoit Bay - Shoaling - Chart 14804**

Severe shoaling has been reported to depths of 1 to 2 feet in Irondequoit Bay near the Bay Entrance Channel. Two temporary buoys have been established near the entrance to Irondequoit Bay due to severe shoaling. Irondequoit Bay Shoaling Buoy A in position 43-14-14.761N 077-32-02.826W and Irondequoit Bay Shoaling Buoy B in position 43-14-14.761N 077-32-02.856W. The Buoys are labeled "Danger Shoaling" and are located on either side of the Irondequoit Bay Entrance Channel. All Mariners are advised to use caution while transiting the area.

LNM: 34/07

**LAKE ERIE - OH, Port Clinton - Rock Hazard - Chart 14846**

The Coast Guard has received a report of a rock in the water located 260 yards off shore in 3 feet of water at position 41-31-24N 082-57-34.2W. Mariners are urged to use caution when transiting this area.

LNM: 43/07

**LAKE ST CLAIR - St. Clair Cut-Off Channel - Severe Shoaling - Charts 14850, and 14853**

Severe shoaling has been confirmed inside the St. Clair cut-off channel in the vicinity of Pier Lighted Buoy X32 (LLNR 8600). A temporary quick flashing red buoy marked "32" has been established in position 42-30.5N 082-41.1W in 31' of water to best mark the shoaling. See enclosure (4) for charted depth soundings.

LNM: 14/08

**LAKE HURON - Aus Sable River, MI - Severe Shoaling - Oscoda Break Wall - Chart 14863**

Severe shoaling has been reported, from depths of 1.9 feet to 3 feet, immediately outside the entrance to the Aus Sable River. All mariners are advised to use caution while transiting the area.

LNM: 18/08

**LAKE HURON - Middle Island - Private Aid Deployment - Chart 14864**

Four private aids to navigation have been deployed in Lake Huron in the vicinity of Middle Island.

They are currently in the following positions.

Buoy 1 - 45-12-05.64N 083-19-26.04W

Buoy 1A - 45-12-11.52N 083-19-26.04W

Buoy 2 - 45-10-35.28N 083-08-24.78W

Buoy 2A - 45-10-28.92N 083-09-28.74W

The moorings are marked with yellow spar buoys that flash ever 4 seconds with an amber light.

For further information contact Nathan Hawley at (734) 741-2273.

LNM: 22/08

**LAKE MICHIGAN - IN - Portage Burns Waterway - Shoaling**

Shoaling has been reported at the entrance to and within the channel of the Portage - Burns Waterway.

LNM: 15/08

**LAKE MICHIGAN - MI, Arcadia - Shoaling - Hazard to Navigation**

The Coast Guard has received a report of shoaling in the vicinity of Arcadia channel entrance. All mariners are urged to use caution when transiting the channel.

LNM: 43/07

**LAKE MICHIGAN - MI, Pentwater Harbor - Shoaling - Chart 14907**

Shoaling has been reported perpendicular to the entrance of Pentwater Harbor. All mariners use caution while transiting the area.

LNM: 29/07

**LAKE MICHIGAN - New Buffalo Harbor Entrance, MI - Severe Shoaling - Chart 14905**

The Coast Guard has received a report of severe shoaling to depths of 2.8 feet to 2.9 feet at the New Buffalo Harbor Entrance. All Mariners are urged to use caution when transiting the area.

LNM: 45/07

**LAKE MICHIGAN - Waukegan, IL - Waukegan Harbor - Chart 14904**

A vessel claiming a 15'4" draft ran aground while attempting to exit Waukegan harbor on April 26. Current channel condition surveys are not available and channel conditions are unknown. Mariners are advised to use extreme caution when transiting the area.

LNM: 18/08

**LAKE MICHIGAN - Ludington Harbor - Shoaling - Chart 14937**

Shoaling has been reported in Ludington Harbor Channel, in view of Ludington South Pierhead Light 6 (LLNR 18560). Depths were reported as shallow as 14 feet along the south edge of the channel and 24 feet mid-channel.

LNM: 27/06

**LAKE MICHIGAN - Waukegan Harbor, IL - Shoaling - Chart 14904**

Shoaling has been reported in the Waukegan Harbor Channel. The shoaling protrudes approximately 200 feet into the channel from the north. Available depths have been reduced to 10 feet southeast of the Waukegan North Breakwater.

LNM: 38/06

**LAKE MICHIGAN - MI, Holland Harbor - Shoaling - Chart 14932**

Shoaling has been reported in Holland Harbor. Depths of less than 16 feet were reported at the entrance to the channel.

LNM: 50/06

**MEQUON DGPS UNUSABLE TIME APPROVAL**

UNUSABLE TIME IS APPROVED FOR MEQUON, WI DGPS SITE FOR SCHEDULED MAINTENANCE.

UNUSABLE TIME AUTHORIZED FOR THE FOLLOWING DATE/TIME:

PRIMARY 1300Z - 1500Z, 13 JUN 2008 (0900 - 1100 EST)

ALTERNATE 1300Z - 1500Z, 14 JUN 2008.

LNM: 24/08

**LAKE SUPERIOR - Annual Spring Gill Net Survey - Chart 14961**

Marquette Fisheries Research Station will be conducting its annual spring gill net survey for lake trout in Lake Superior starting 21 April and completing by 02 June 2008. They will set gill nets that are 3000ft long, extend about 6 feet from the bottom and are set overnight. The sampling stations are generally 100 to 250ft deep and within a few miles from shore. The nets will be marked with black flagged unlighted buoys, labeled with agency identification.

The survey will be conducted in the following areas of Lake Superior:

West of Keweenaw Peninsula in the Upper entry region; outer Keweenaw Bay from Bete Grise to the Huron Islands; Big Bay; Marquette; Au Train, Munising, and Grand Marais. Isle Royale will also have sampling done for about 8 days in mid-May.

In addition to the spring survey, sampling nets will be set overnight at two stations near Marquette at the beginning of each month from May through December for a special study. The near shore station is located about 3 nautical miles east northeast of the Marquette lower harbor break wall light. The off shore station is located in deepwater about 5 nautical miles northeast of the upper harbor break wall light. In addition to the standard staff buoys, these nets will have special yellow-colored unlighted mooring buoys.

Marquette Fisheries Research Station can be reached via 800 MHz Radios on their primary radio channel on Zone B, FIMARQT, or via marine radio channel 16. Their radio call sign is R/V LAKE CHAR. They can also be reached on the boat via cell phone number (906) 458-6925.

The Chippewa/Ottawa Resource Authority (CORA) will be sampling the Grand Marais area from 01 May to 01 June using the same type of gear.

Please see enclosure (5) for a general schedule for the spring lake trout survey.

For further information, contact Shawn P. Sitar at (906) 249-1611 ext. 310.

LNM: 16/08

**LAKE SUPERIOR - Chequamegon Bay - Temporary Aid Established - Chart 14974**

A temporary white styrofoam aid has been established to mark the end of underwater cabling in position 46-48.5N 090-47.9W.

LNM: 45/07

**LAKE SUPERIOR - Isle Royale - EMERGENCY RESTRICTIVE ORDER - Chart 14976**

Effective Tuesday September 18, 2007, the National Park Service instituted an Emergency Restrictive Order under 36 CFR 1.5(a)(2) prohibiting the discharge of untreated ballast water within Isle Royale National Park waters. This order affects vessels intending to transit within four and one half miles of the shore of Isle Royale and immediately surrounding islands, including Passage Island and Gull Islands. Please contact the National Park Service at 219-926-7561 Ext. 311 for more information.

LNM: 39/07

**LAKE SUPERIOR - St Louis River - Shoaling - Chart 14975**

Shoaling has been reported near River buoys 58-61 (LLNR 16385, 16390, 16395, 16400) in the St Louis River. All mariners are recommend to use extreme caution when transiting this area as water depths are as low as 4 feet.

LNM: 19/07

**LAKE SUPERIOR - Duluth Harbor - Chart 14975**

Minnesota Channel (Eastern Section) Lighted Buoy "14" (LLNR 16235) will be temporarily relocated to position 46-43'11"N 092-09'38"W approximately 80 yards inside the channel to facilitate the Tar Coal cleanup Safety Zone until the summer of 2009.

LNM: 22/07

---

---

**SECTION II - DISCREPANCIES**

This section lists all reported and corrected discrepancies related to Aids to Navigation in this edition. A discrepancy is a change in the status of an aid to navigation that differs from what is published or charted.

---

**DISCREPANCIES (FEDERAL AIDS)**

LLNR	Aid Name	Status	Chart No.	BNM Ref.	LNM St	LNM End
<b>3000</b>	<b>Strawberry Island Cut Upper Range</b>	<b>LT EXT</b>	<b>14832</b>	<b>B059-08</b>	<b>24/08</b>	
	<b>Front Light</b>					
8880	St Clair Shores Breakwater Daybeacon 1	DBN DMGD	14853	D015-08	10/08	
8885	St Clair Shores Breakwater Light 2	HAZ NAV	14853	D014-07	10/08	
12145	Crooked Lake Daybeacon 82	DBN DEST	14886	S091-08	19/08	
13955	Upper Nicolet Range Front Light	DBN DEST	14883	S027-08	11/08	
14340	Pointe Aux Pins Channel Lighted Buoy 10	LT EXT	14884	S112-08	23/08	
<b>14926</b>	<b>Torch Lake Southwest Arm</b>	<b>MISSING</b>	<b>14972</b>	<b>S115-08</b>	<b>24/08</b>	
	<b>Obstruction Buoy 2</b>					
<b>14926</b>	<b>Torch Lake Southwest Arm</b>	<b>MISSING</b>	<b>14972</b>	<b>S115-08</b>	<b>24/08</b>	
	<b>Obstruction Buoy 2</b>					
17780	Grays Reef Passage Channel Lighted Buoy 7	MISSING	14911	S060-08	15/08	
18310	NOAA Lighted Weather Buoy 45002	LT EXT	14912		20/08	
<b>19080</b>	<b>Grand River Buoy 21</b>	<b>ADRIFT</b>	<b>14933</b>	<b>M204-08</b>	<b>24/08</b>	
<b>20635</b>	<b>Milwaukee Breakwater Light</b>	<b>LT EXT</b>	<b>14924</b>	<b>M205-08</b>	<b>24/08</b>	
21305	Plum Island Range Front Light	REDUCED INT	14909	M023-08	04/08	
21550	Whiskey Island Shoal Buoy 6	OFF STA	14911	S083-08	18/08	
21560	Squaw Island Shoal Buoy 2	MISSING	14911	S086-08	18/08	
21630	Little Bay De Noc Lighted Buoy 8	MISSING	14915	M106-08	15/08	
21650	Little Bay De Noc Shoal Lighted Buoy 10	MISSING	14915	M148-08	20/08	
21790	Cedar River Entrance Buoy 1	OFF STA	14909	M152-08	21/08	
22255	Green Bay Harbor Entrance Channel Lighted Buoy 27	LT IMCH	14918	M172-08	22/08	

**DISCREPANCIES (FEDERAL AIDS) CORRECTED**

LLNR	Aid Name	Status	Chart No.	BNM Ref.	LNM St	LNM End
2130	Ford Shoal Lighted Buoy 1	WATCHING PROPERLY	14803	B053-08	23/08	24/08
2820	Black Rock Canal Lighted Buoy 8	WATCHING PROPERLY	14833	B054-08	24/08	24/08
5710	Put-In-Bay Channel Buoy 8	WATCHING PROPERLY	14842	D068-08	24/08	24/08

10210	Point Aux Barques Light	WATCHING PROPERLY	14862		24/08	24/08
10295	Port Austin Light 5	WATCHING PROPERLY	14863	D066-08	24/08	24/08
12540	Mission Point Lighted Bell Buoy 2	WATCHING PROPERLY	14881	S114-08	24/08	24/08
16265	Minnesota Channel (Western Section) Lighted Buoy 22	WATCHING PROPERLY	14975	S111-08	23/08	24/08

**DISCREPANCIES (PRIVATE AIDS)**

LLNR	Aid Name	Status	Chart No.	BNM Ref.	LNM St	LNM End
<b>2145</b>	<b>Port Bay Entrance Lighted Buoy 1</b>	<b>MISSING</b>	<b>14804</b>		<b>24/08</b>	
<b>2150</b>	<b>Port Bay Entrance Light 2</b>	<b>MISSING</b>	<b>14804</b>		<b>24/08</b>	
<b>2155</b>	<b>Port Bay Lighted Buoy 3</b>	<b>MISSING</b>	<b>14804</b>		<b>24/08</b>	
<b>2165</b>	<b>Port Bay Lighted Buoy 5</b>	<b>LT EXT</b>	<b>14804</b>		<b>24/08</b>	
4030	Cleveland Waterworks Intake Crib Light	LT EXT	14826	B033-08	20/08	
7395	South Huron Valley Outfall Center Lighted Buoy	MISSING	14853		38/07	
7400	South Huron Valley Outfall East Lighted Buoy	MISSING	14853		38/07	24/08
8140	Great Lakes Steel Shoal Lighted Buoy 1	MISSING	14853		38/07	24/08
8145	Great Lakes Steel Shoal Lighted Buoy 3	MISSING	18453		38/07	24/08
8150	Detroit Edison Cell Light South	LT EXT	14853		38/07	
8155	Detroit Edison Cell Light North	LT EXT	14853		38/07	
8735	Crescent Sail Yacht Club Breakwater South Light	LT EXT	14853		38/07	
9840	Recors Point Dock Lower Light	LT EXT	14853	D080-06	25/06	
14191	George Kemp Marina East Light	LT EXT	14844	S076-08	18/08	
15420	Washburn Harbor South Breakwater Light 2	DBN IMCH/NUM MSNG/DAMGD	14974		29/07	
15425	Washburn Harbor North Breakwater Light 1	DBN IMCH/NUM MSNG/DAMGD	14974		29/07	
19630	Buffington Harbor Breakwater Light	RAC INOP	14926	M082-08	18/08	
19648	City Of East Chicago, Indiana Casino Harbor Light 1	LT EXT	14926	M189-08	23/08	
20390	Northpoint Marina Entrance Light 1	LT EXT	14904		47/07	
20445	Southport Marina Entrance Light 2	LT EXT	14904		22/08	
20775	Port Washington South Projection Jetty Light	LT IMCH	14904	M542-07	46/07	
22055.4	Suamico Lighted Buoy 4	LT EXT	14918	M328-07	30/07	

**DISCREPANCIES (PRIVATE AIDS) CORRECTED**

LLNR	Aid Name	Status	Chart No.	BNM Ref.	LNM St	LNM End
7390	South Huron Valley Outfall West Lighted Buoy	DISCONTINUED	14853		38/07	24/08
8745	Municipal Pier South Basin Light	WATCHING PROPERLY	14853		38/07	24/08
8940	Black Creek Lighted Buoy 1	WATCHING PROPERLY	14853		21/07	24/08
18790	Great Lakes Marina Entrance Light 2	WATCHING PROPERLY	14934	M165-08	24/08	24/08
20695	Milwaukee City South Pier No. 2 North Light	WATCHING PROPERLY	14924	M190-08	23/08	24/08

**PLATFORM DISCREPANCIES**

Name	Status	Position	BNM Ref.	LNM St	LNM End
None					

**PLATFORM DISCREPANCIES CORRECTED**

Name	Status	Position	BNM Ref.	LNM St	LNM End
None					

**SECTION III - TEMPORARY CHANGES and TEMPORARY CHANGES CORRECTED**

This section contains temporary changes and corrections to Aids to Navigation for this edition. When charted aids are temporarily relocated for dredging, testing, evaluation, or marking an obstruction, a temporary correction shall be listed in Section IV giving the new position.

**TEMPORARY CHANGES**

LLNR	Aid Name	Status	Chart No.	BNM Ref.	LNM St	LNM End
7650	Stony Island Buoy 8	DISCONTINUED	14853	D061-08	22/08	
11410	Alpena Channel Buoy 4	REMOVED DUE TO ICE	14864	D041-08	18/08	
13490	West Neebish Channel (Downbound) Buoy 52	DISCONTINUED	14883		23/08	
15525	Bayfield Municipal Breakwater Light	DISCONTINUED	14973	S158-07	44/07	
<b>18336</b>	<b>Leland Harbor Shoal Buoy 2A</b>	<b>DISCONTINUED</b>	<b>14912</b>	<b>P021433Z JUN</b>	<b>24/08</b>	
<b>18337</b>	<b>Leland Harbor Shoal Buoy 2B</b>	<b>DISCONTINUED</b>	<b>14912</b>	<b>P021433Z JUN</b>	<b>24/08</b>	
19820	Calumet Buoy 5	TRUB	14926	M127-08	17/08	
20680	Menomonee River Obstruction Lighted Buoy	ESTABLISHED	14924		31/06	
21650	Little Bay De Noc Shoal Lighted Buoy 10	DISCONTINUED	14915		20/08	

**TEMPORARY CHANGES CORRECTED**

LLNR	Aid Name	Status	Chart No.	BNM Ref.	LNM St	LNM End
9575	St Clair Flats Light 2	LWP	14853		21/07	29/08

**PLATFORM TEMPORARY CHANGES**

Name	Status	Position	BNM Ref.	LNM St	LNM End
None					

**PLATFORM TEMPORARY CHANGES CORRECTED**

Name	Status	Position	BNM Ref.	LNM St	LNM End
None					

**SECTION IV - CHART CORRECTIONS**

This section contains corrections to federally and privately maintained Aids to Navigation, as well as NOS corrections.

This section contains corrective actions affecting chart(s). Corrections appear numerically by chart number, and pertain to that chart only. It is up to the mariner to decide which chart(s) are to be corrected. The following example explains individual elements of a typical chart correction.

Chart Number	Chart Edition	Edition Date	Last Local Notice to Mariners	Horizontal Datum Reference	Source of Correction	Current Local Notice to Mariners
12327	91st Ed.	19-APR-97	Last LNM: 26/97	NAD 83		27/97

Chart Title: NY-NJ-NEW YORK HARBOR - RARITAN RIVER

Main Panel 2245	NEW YORK HARBOR				CGD01	
(Temp) ADD	NATIONAL DOCK CHANNEL BUOY 3				at 40-41-09.001N	074-02-48.001W
	Green can					
Corrective Action	Object of Corrective Action					Position

(Temp) indicates that the chart correction action is temporary in nature. Courses and bearings are given in degrees clockwise from 000 true.

Bearings of light sectors are toward the light from seaward. The nominal range of lights is expressed in nautical miles (NM) unless otherwise noted.

<b>14848</b>	<b>58th Ed.</b>	<b>01-OCT-07</b>	<b>Last LNM: 42/07</b>	<b>NAD 83</b>		<b>24/08</b>
Chart Title: <b>Detroit River</b>						
<b>Extension 1253 DETROIT RIVER MICHIGAN EXTENSION. Page/Side: N/A</b>						
CHANGE	Ford Yacht Club East Basin Entrance Light 4 (LLNR 7471) from Q R 6ft "4" Priv to F I R 2.5s "4" Priv				CGD09 at 42-05-20.000N	083-10-09.000W

**14853**            **17th Ed.**            **01-MAR-08**            **Last LNM: 16/08**            **NAD 83**            **24/08**  
*ChartTitle: SMALL-CRAFT BOOK CHART - Detroit River, Lake St. Clair and St. Clair River (book of 47 charts)*  
**Main Panel 1263 DETROIT RIVER, PAGE 2. Page/Side: 2**

CHANGE	Ford Yacht Club East Basin Entrance Light 4 (LLNR 7471) from Q R 6ft "4" Priv to FI R 2.5s "4" Priv	CGD09 at 42-05-20.000N	083-10-09.000W
--------	--	---------------------------	----------------

**14864**            **26th Ed.**            **11-AUG-01**            **Last LNM: 14/07**            **NAD 83**            **24/08**  
*ChartTitle: Harrisville to Forty Mile Point;Harrisville Harbor;Alpena;Rogers City and Calcite*  
**Inset 1325 ALPENA HARBOR MICHIGAN . Page/Side: N/A**

RELOCATE	Lafarge Corporation Channel Junction Lighted Buoy TB (LLNR 11420)	CGD09 from 45-03-26.000N to 45-03-26.286N	083-25-01.000W 083-25-00.531W
----------	--	---	----------------------------------

**14913**            **19th Ed.**            **01-SEP-05**            **Last LNM: 23/08**            **NAD 83**            **24/08**  
*ChartTitle: Grand Traverse Bay to Little Traverse Bay;Harobr Springs;Petoskey;Elk Rapids;Suttons Bay;Northport;Traverse City*  
**Inset 1402 ELK RAPIDS MICHIGAN. Page/Side: N/A**

CHANGE	Elk Rapids Lighted Buoy 1 (LLNR 18155) from G C "1" Priv to G "1" FI G 2.5s Priv	CGD09 at 44-54-09.500N	085-25-04.800W
CHANGE	Elk Rapids Lighted Buoy 2 (LLNR 18157) from R N "2" Priv to R "2" FI R 2.5s Priv	CGD09 at 44-54-08.800N	085-25-06.100W

**14975**            **35th Ed.**            **01-DEC-07**            **Last LNM: 47/07**            **NAD 83**            **24/08**  
*ChartTitle: Duluth-Superior Harbor;Upper St. Louis River*  
**Main Panel 1538 DULUTH-SUPERIOR HARBOR. Page/Side: N/A**

CHANGE	Tabulation - Duluth Harbor <a href="http://ocsddata.ncd.noaa.gov/nm/SupportImage.asp?ItemID=162615">http://ocsddata.ncd.noaa.gov/nm/SupportImage.asp?ItemID=162615</a> ; Duluth Harbor (NOS NW-15595)	NOS 46-47-04.000N	092-08-56.000W
CHANGE	Tabulation - Superior Harbor <a href="http://ocsddata.ncd.noaa.gov/nm/SupportImage.asp?ItemID=162614">http://ocsddata.ncd.noaa.gov/nm/SupportImage.asp?ItemID=162614</a> ; Superior Harbor (NOS NW-15595)	NOS 46-41-15.000N	092-03-05.000W

---

**SECTION V - ADVANCE NOTICES**

This section contains advance notice of approved projects, changes to aids to navigation, or upcoming temporary changes such as dredging, etc.  
Mariners are advised to use caution while transiting these areas.

---

SUMMARY OF ADVANCED APPROVED PROJECTS

<u>Approved Project(s)</u>	<u>Project Date</u>	<u>Ref. LNM</u>
None		

Advance Notice(s)

**LAKE ERIE - Port Clinton - Chart 14846**

Port Clinton Light "2" (LLNR 5865) increase the range of the light from 6 miles to 9 miles.  
LNM: 51/07

**LAKE ERIE - West End of Sandusky Bay - Chart 14842**

Muddy Creek  
Squaw Island Light 12 (LLNR 5085) change flash characteristic to QW and day board to read "Danger Shoal"  
Sandusky River  
Sandusky River Daybeacon 13 (LLNR 5090) change day board to white with orange bands and to read "Danger Rock"  
Sandusky River Daybeacon 15 (LLNR 5096) change day board to white with orange bands and to read "Danger Rock"  
Sandusky River Daybeacon 17 (LLNR 5100) change day board to white with orange bands and to read "Danger Rock"  
LNM: 19/08

**DETROIT RIVER - Livingston Channel - Chart 14848**

Propose to change the lantern from the existing incandescent lamps to an energy efficient LED, this will reduce the range of the light from 4 to 3 miles:  
Livingston Channel Light "21" (LLNR 7260)  
Livingston Channel Light "23" (LLNR 7250)  
Livingston Channel Light "24" (LLNR 7255)



Livingston Channel Light "25" (LLNR 7240)  
Livingston Channel Light "26" (LLNR 7245)

LNM: 09/07

**LAKE ST. CLAIR - Charts 14850 and 14843**

Change the lantern from its current incandescent lamps to an energy efficient LED which will reduce the range of the lantern from 4 to 3 miles.

Clinton River Entrance LB "CR" (LLNR 8975)  
Clinton River Entrance LB "1" (LLNR 8980)  
Clinton River Entrance LB "2" (LLNR 8985)  
North Channel Entrance LB "2NC" (LLNR 9305)  
Middle Channel Entrance LB "1MC" (LLNR 9435)  
Point Huron LB "1PH" (LLNR 8925)  
St. Clair Flats Old Channel LB "2OC" (LLNR 9530)  
Gaukler Shoal Junction LB (LLNR 8855)  
Gahkler Shoal LB "1" (LLNR 8850)

LNM: 19/08

**LAKE ST. CLAIR - Charts 14850, 14853**

Lake St. Clair Light (LLNR 8525) discontinue the higher intensity beam upstream. Increase the range of the light from 6 to 9 miles.

LNM: 23/07

**LAKE HURON - Lexington Harbor - Chart 14862**

Discontinue the following aids to navigation due to shoaling and low water levels:

LLNR	Aid Name
10105	Lexington Harbor Buoy -5-
10110	Lexington Harbor Buoy -6-

LNM: 19/08

**LAKE HURON - Harrisville to Forty Mile Point - Chart 14864**

Sturgeon Point Light (LLNR 11345) change to private aid. Characteristics and range will remain the same.

LNM: 01/07

**STRAITS OF MACKINAW - Michigan Inland Route - Chart 14886**

Change the lantern from the existing incandescent lamps to an energy efficient LED, this will reduce the range of the light from 4 to 3 miles on the following aids:

Pickereel Channel Entrance Light "2" (LLNR 12135)  
Crooked Lake Light "77" (LLNR 12120)

LNM: 19/08

**LAKE MICHIGAN - Lake Charlevoix - Chart 14942**

Charlevoix South Pier head Light (LLNR 17925) change the color of the day mark from white to red.

LNM: 51/07

**LAKE MICHIGAN - Menominee and Marinette Harbors - Chart 14917**

Establish the following buoys to mark the Regulated Navigation Area (RNA) on the Menominee River. The buoys will be maintained from 14 April to 07 November.

Menominee River RNA Buoy "A" (LLNR 21943) Yellow Nun with a black letter "A" in position 45-05-59.5N and 087-36-48.6W  
Menominee River RNA Buoy "B" (LLNR 21956) Yellow Can with a black letter "B" in position 45-06-03.5N and 087-37-14.5W

LNM: 05/07

**LAKE MICHIGAN - Port Washington - Chart 14901**

Port Washington Breakwater Light (LLNR 20770) Install a user activated fog signal system; to operate the fog signal key the microphone on VHF Marine Radio channel 79 five times.

LNM: 15/08

**LAKE MICHIGAN - Sheboygan - Chart 14922**

Sheboygan Breakwater Light (LLNR 20820) Install a user activated fog signal system; to operate the fog signal by keying the microphone on VHF Marine radio channel 79 five times.

LNM: 12/08

**LAKE MICHIGAN - St. Joseph - Chart 14930**

St. Joseph North Pier Inner Light (LLNR 19520) move light to rail and reduce range to 9 miles.

LNM: 49/06

**LAKE MICHIGAN - Sturgeon Bay Ship Canal - Chart 14919**

Sturgeon bay Ship Canal Buoy "15A" (LLNR 21117) change from an unlighted buoy to a lighted buoy. Fl G 2.5s, 3 mile range. Seasonal from 21 April through 21 November replaced by a can in the winter.

LNM: 16/08

**LAKE MICHIGAN - Algoma to Sheboygan - Chart 14903**

Two Rivers North Pierhead light (LLNR 20925) change the characteristic from F R to Fl R 2.5s. Increase the range of the light from 9 to 12 miles. Install a user activated fog signal; to operate the fog signal by keying the microphone on VHF Marine radio channel 79 five times.

LNM: 27/07

**LAKE MICHIGAN - Waugoshance Point to Seul Point - Chart 14911**

Seul Choix Point Light (LLNR 21490) reduce the range of the light from 26 miles to 15 miles.

LNM: 27/07

**LAKE MICHIGAN - Waukegan to South Haven - Chart 14905**

Michigan City East Pierhead Light (LLNR 19545) change the operation of the Fog Signal to a user activated system. Install a user activated fog signal system; to operate the fog signal by keying the microphone on VHF Marine radio channel 79 five times.

LNM: 49/06

**LAKE MICHIGAN - Manitowoc Harbor - Chart 14922**

Manitowoc Breakwall Light ( LLNR 20860) Reduce the range of the light from 15 to 12 miles. Install a user activated fog signal system; to operate the fog signal by keying the microphone on VHF Marine radio channel 79 five times.

LNM: 01/07

**LAKE MICHIGAN - Milwaukee Harbor - Chart 14924**

Milwaukee Breakwater Light (LLNR 20635) Discontinue the floodlights. Install a user activated fog signal system; to operate the fog signal by keying the microphone on VHF Marine radio channel 79 five times.

LNM: 01/07

**LAKE MICHIGAN - Port Washington to Waukegan - Chart 14904**

Waukegan Harbor Light (LLNR 20315) Reduce the range of the light from 14 to 12 miles. Install a user activated fog signal system; to operate the fog signal by keying the microphone on VHF Marine radio channel 79 five times.

LNM: 01/07

**LAKE MICHIGAN - Indiana Harbor - Charts 14926, and 14929**

Indiana Harbor East Breakwater Light (LLNR 19675) reduce the range of the light from 20 to 12 miles. Install a user activated fog signal system; to operate the fog signal by keying the microphone on VHF Marine radio channel 79 five times.

LNM: 11/07

**LAKE SUPERIOR - Apostle Islands - Chart 14973**

Outer Island Light (LLNR 15255) Propose to change the lantern from the existing incandescent lamps to an energy efficient LED this will reduce the range of the light from 15 to 12 miles.

Devils Island Light (LLNR 15565) Propose to change the lantern from the existing incandescent lamps to an energy efficient LED this will reduce the range of the light from 15 to 12 miles.

LNM: 19/08

**LAKE SUPERIOR - Big Bay Point to Redridge - Chart 14964**

Huron Island Light (LLNR 14730) change the lantern from the existing incandescent lamps to an energy efficient LED this will reduce the range of the light from 15 to 12 miles.

LNM: 19/08

**LAKE SUPERIOR - Isle Royale - Chart 14976**

Passage Island Light (LLNR 16835) Propose to change the lantern from the existing incandescent lamps to an energy efficient LED this will reduce the range of the light from 17 to 12 miles.

LNM: 07/08

Rock of Ages Light (LLNR 16655) Propose to change the lantern from the existing incandescent lamps to an energy efficient LED this will reduce the range from 17 to 12 miles.

**LAKE SUPERIOR - Beaver Bay to Pigeon Point - Chart 14967**

Grand Portage Bay Entrance Light (LLNR 16635) increase the range of the light from 7 to 9 miles.

LNM: 23/07

**SECTION VI - PROPOSED CHANGES**

Periodically, the Coast Guard evaluates its system of aids to navigation to determine whether the conditions for which the aids to navigation were established have changed. When changes occur, the feasibility of improving, relocating, replacing, or discontinuing aids are considered. This section contains notice(s) of non-approved, proposed projects open for comment. SPECIAL NOTE: Mariners are requested to respond in writing to the District office unless otherwise noted (see banner page for address).

**PROPOSED WATERWAY PROJECTS OPEN FOR PUBLIC COMMENT**

<u>Proposed Project(s)</u>	<u>Closing</u>	<u>Docket No.</u>	<u>Ref. LNM</u>
None			

Proposed Change Notice(s)

**LAKE ERIE - Lorain Harbor - Chart 14841**

Lorain Harbor Detached Breakwater Middle Light (LLNR 4323) Change the color of the light from green to yellow. The characteristic will be changed from Fl G 4s to Fl Y 4s.

LNM: 24/08

**LAKE HURON - Harrisville to Forty Mile Point - Chart 14864**

Presque Isle Light (LLNR 11550) Change the aid from a federal aid to navigation to a private aid to navigation. The characteristic will remain the same.

LNM: 20/07

**ST MARYS RIVER - De Tour to Munuscong Lake - Chart 14882**

Change the lantern from the existing incandescent lamps to an energy efficient LED, this will reduce the range of the light from 4 to 3 miles.:

- Lime Island Lighted Buoy "14A" (LLNR 12910)
- Lime Island Lighted Buoy "16" (LLNR 12935)
- Point Aux Frenes Lighted Buoy "22" (LLNR 12980)
- Point Aux Frenes Lighted Buoy "24" (LLNR 12990)
- Hay Point Reef Lighted Buoy "18A" (LLNR 12955)
- Munuscong Lake Lighted Buoy "25" (LLNR 13005)
- Munuscong Lake Lighted Buoy "26" (LLNR 13010)

LNM: 19/08

**ST. MARYS RIVER - Munuscong Lake - Chart 14883**

Munuscong Channel Junction Lighted Buoy (LLNR 13030) reduce the range of the light from 7 to 6 miles. The reduction in range is due to a change from incandescent lamps to an LED lantern. LED lanterns use less energy, are more reliable, and survive the early ice common to the St. Mary-s River.

LNM: 21/08

**LAKE SUPERIOR - Isle Royale - Chart 14976**

Siskiwit Bay Passage Lighted Bell Buoy "SB" (LLNR 16685) reduce the range of the light from 7 to 6 miles. Reduction in range is due to installation of an LED lantern that uses less energy and has been proven more reliable than incandescent lamps.

**For any comments or questions on these proposed changes please contact**

Doug Sharp of the Ninth District Aids to Navigation office at (216) 902-6070.

---

---

**SECTION VII - GENERAL**

This section contains information of general concern to the Mariners. Mariners are advised to use caution while transiting these areas.

---

**Waterways Analysis and Management System Study - 2008**

The Coast Guard is conducting a Waterways Analysis and Management System Study on the following waterways during 2008. The study focuses on the area's aid to navigation system, waterborne commerce, marine casualty information, emergency response plans, routine and emergency communication capabilities, and future development projects. Any company or individual wishing to provide comments or participate in a user survey should contact the office listed below each study area.

Lake Erie - Eastern Ohio - (LLNR 3700 thru LLNR 3955)

Contact: Commanding Officer  
USCG Sector Buffalo  
1 Fuhrmann Blvd.  
Buffalo, N.Y. 14203  
(716) 813-9524

Lake Erie - Erie Islands - Chart 14844

Contact: Commanding Officer  
USCG Sector Detroit  
110 Mt. Elliot Ave.  
Detroit, MI 48207  
(313) 568-9523

Lake Superior - Whitefish Bay - Chart 14884

Contact: Commanding Officer  
USCGC Alder (WLB 216)  
1201 Minnesota Avenue  
Duluth, MN 55802-2492  
(218) 529-3131

Lake Michigan - Northern Green Bay, Little Bay De Noc - Chart 14908, 14909, 14915

Contact: Commanding Officer  
USCGC Mobile Bay (WTGB 103)  
P.O. Box 287  
Sturgeon Bay, WI. 54235

Lake Michigan - Manitowoc and Sheboygan - Chart 14922

Contact: Commanding Officer  
USCG Sector Lake Michigan  
2420 South Lincoln Memorial Drive  
Milwaukee, WI. 53207  
(414) 741-7188

Lake Michigan - Green Bay Entrance - Chart 14918

Contact: Commanding Officer  
USCGC Mobile Bay (WTGB 103)  
P.O. Box 287  
Sturgeon Bay, WI 54235-0287  
(920) 743-2646

Lake Huron - Au Gres and Tawas Bay - Chart 14863

Contact: Commander (Aid to Navigation Officer)  
U.S. Coast Guard Sector Detroit  
110 Mt. Elliot Ave.  
Detroit, Michigan 48207-4380  
(313) 568-9523

Lake Huron/Lake Michigan - Mackinaw Straits - chart 14881

Contact: Commanding Officer  
USCGC Mackinaw (WLBB 30)

**Waterways Analysis and Management System Study - 2008**

632 Coast Guard Drive  
Cheboygan, Michigan 49783-9501  
(231) 596-2030

Lake Huron - Saginaw Bay - Chart 14863, 14867  
Contact: Commanding Officer  
USCGC Hollyhock (WLB 214)  
2700 Omar Street  
Port Huron, MI 48060  
(810) 982-2684

LNM: 07/08

**LAKE MICHIGAN - Notice of Dredging - Saugatuck and South Haven Harbors, MI - Chart 14906**

The King Company INC. will be conducting maintenance dredging in Saugatuck and South Haven Harbors, MI. Operations will commence on July 11, 2008 thru August 7, 2008 the hours of operation are 24 hours a day / 7 days a week. The DREDGE CASEY E. may be contacted VHF - FM channel 73 and 16. Mariners are requested to pay special attention to the buoys, and required day and night signs on dredge. For further information contact Mike Petrus at (616) 399-1784.

LNM: 24/08

\*\*\*\*\* REVISED LNM 24/08 \*\*\*\*\*

**LAKE MICHIGAN - WI - Milwaukee Harbor, Extension of Bridge Rehabilitation; Reduction of Requirement for Advance Notice to Two-Hours, Chart 14924**

Bridge operations testing will continue on the State Street Bridge at Mile 1.79 over Milwaukee River until approximately November, 2008. The bridge will open for vessels if at least two-hours advance notice is provided. Notice may be provided by calling the Project Manager at (262) 366-5004, or Superintendent at (262) 366-5402 (24-hours). The approximate vertical clearance is 12 feet with the bridge in the closed position. Mariners are urged to pass the bridge with extreme caution. [23/05] [28/05] [47/06] [15/07] [22/07] [27/07] [36/07] [43/07] [02/08] [18/08] [24/08]

LNM: 24/08

**GREAT LAKES - GENERAL - MARINE EVENTS - SAFETY ZONES - SECURITY ZONES**

Events listed below are those events that may have accompanying special local regulations. Mariners transiting these areas should contact the U.S. Coast Guard with any questions and are asked to exercise caution when navigating through the area of the event. Summary located in Enclosure (2)

**LAKE ERIE / LAKE ONTARIO - Marine Events / Safety Zones - Charts 14820 & 14800**

The Following Marine Events or Safety zones will take place in Lake Erie and Lake Ontario. For information about the following events contact the POC or USCG Sector Buffalo's Prevention Department.

LAKE ONTARIO:

THE EVENT: Olcott NY Fireworks  
LOCATION: Lake Ontario, Olcott, NY  
DATE/TIME: 03 July 2008  
SPONSOR OR POC: Jane Voelpel (716) 628-4007

THE EVENT: Tom Graves Memorial  
LOCATION: Port Bay, Wayne County, NY  
DATE AND TIME: 03 July 2008 from 2200 to 2230  
SPONSOR OR POC: Harry DeKing (315) 594-2691

THE EVENT: 8th Annual Paddle for Betterment  
LOCATION: Alexandria Bay, NY, St. Lawrence River  
DATE/TIME: 0900-1100 26 July 2008  
SPONSOR OR POC: Carolyn Curly (315) 482-9980

LAKE ERIE:

THE EVENT: Erie Summer Festival of the Arts  
LOCATION: Liberty Park, Presque Isle Bay, Erie, PA  
DATE/TIME: 2200-2230 28 June 2008  
SPONSOR OR POC: Dave Stevens (814) 218-1373

Name of Event: Leukemia Cup Regatta  
Location: Rocky River, Lake Erie Rocky River, OH  
Time/Date: 18-20JUL08 0900-1500

**LAKE ERIE / LAKE ONTARIO - Marine Events / Safety Zones - Charts 14820 & 14800**

Sponsor or POC: Dan Clevenger (216) 496-8465

LNLM: 24/08

**LAKE MICHIGAN - Marine Events / Safety Zones - Chart 14901**

LAKE ERIE - Marine Events / Safety Zones - Charts 14820 & 14800

The Following Marine Events or Safety zones will take place in Lake Michigan. For information about the following events contact the POC or USCG Sector Lake Michigan-s Prevention Department.

Safety Zones:

The Event: Port Washington Pirate Festival  
Location: Lake Michigan, Port Washington, WI  
Date/Time: 06 June 08, 1800-2000  
Sponsor or POC; VHF-FM 16 or Sector Lake Michigan at (414) 747-7182

The Event: Pridefest Fireworks  
Location: Lake Michigan, Milwaukee, WI  
Date/Time: 07 June 08, 2130-2200  
Sponsor or POC; VHF-FM 16 or Sector Lake Michigan at (414) 747-7182

The Event: Thunder on the Lakeshore  
Location: Lake Michigan, Manitowoc, WI  
Date/Time: 07 June 08, 2100-2130  
Sponsor or POC; VHF-FM 16 or Sector Lake Michigan at (414) 747-7182

The Event: Navy Pier Fireworks  
Location: Lake Michigan, Chicago, IL  
Date/Time: 07 June 08, 2200-2300  
Sponsor or POC; VHF-FM 16 or Sector Lake Michigan at (414) 747-7182

The Event: Navy Pier Fireworks  
Location: Lake Michigan, Chicago, IL  
Date/Time: 11 June 08, 2100-2200  
Sponsor or POC; VHF-FM 16 or Sector Lake Michigan at (414) 747-7182

The Event: Navy Pier Fireworks  
Location: Lake Michigan, Chicago, IL  
Date/Time: 18 June 08, 2100-2200  
Sponsor or POC; VHF-FM 16 or Sector Lake Michigan at (414) 747-7182

The Event: Navy Pier Fireworks  
Location: Lake Michigan, Chicago, IL  
Date/Time: 25 June 08, 2100-2200  
Sponsor or POC; VHF-FM 16 or Sector Lake Michigan at (414) 747-7182

The Event: Public Fireworks Display  
Location: Lake Michigan, Green Bay, WI  
Date/Time: 13 June 08, 2030-2200  
Sponsor or POC; VHF-FM 16 or Sector Lake Michigan at (414) 747-7182

The Event: International Bay Fest Fireworks  
Location: Lake Michigan, Green Bay, WI  
Date/Time: 14 June 08, 2045-2130  
Sponsor or POC; VHF-FM 16 or Sector Lake Michigan at (414) 747-7182

The Event: Navy Pier Fireworks  
Location: Lake Michigan, Chicago, IL  
Date/Time: 14 June 08, 2200-2300  
Sponsor or POC; VHF-FM 16 or Sector Lake Michigan at (414) 747-7182

The Event: Polish Fest  
Location: Lake Michigan, Milwaukee, WI  
Date/Time: 20 June 08, 2200-2300  
Sponsor or POC; VHF-FM 16 or Sector Lake Michigan at (414) 747-7182

The Event: Elberta Solstice Festival  
Location: Lake Michigan, Sturgeon Bay, WI

**LAKE MICHIGAN - Marine Events / Safety Zones - Chart 14901**

Date/Time: 21 June 08, 2130-2230  
 Sponsor or POC; VHF-FM 16 or Sector Lake Michigan at (414) 747-7182

The Event: Jordan Valley Freedom Festival  
 Location: Lake Michigan, East Jordan, MI  
 Date/Time: 21 June 08, 1900-2200  
 Sponsor or POC; VHF-FM 16 or Sector Lake Michigan at (414) 747-7182

The Event: Spring Lake Heritage Festival  
 Location: Lake Michigan, Spring Lake, MI  
 Date/Time: 21 June 08, 2200-2300  
 Sponsor or POC; VHF-FM 16 or Sector Lake Michigan at (414) 747-7182

The Event: Navy Pier Fireworks  
 Location: Lake Michigan, Chicago, IL  
 Date/Time: 21 June 08, 2200-2300  
 Sponsor or POC; VHF-FM 16 or Sector Lake Michigan at (414) 747-7182

The Event: Summerfest  
 Location: Lake Michigan, Milwaukee, WI  
 Date/Time: 26 June 08, 2200-2300  
 Sponsor or POC; VHF-FM 16 or Sector Lake Michigan at (414) 747-7182

The Event: Navy Pier Fireworks  
 Location: Lake Michigan, Chicago, IL  
 Date/Time: 28 June 08, 2200-2300  
 Sponsor or POC; VHF-FM 16 or Sector Lake Michigan at (414) 747-7182

Marine Events:

The Event: Lake Macatawa Triathlon  
 Location: Lake Macatawa, Holland, WI  
 Date/Time: 09 June 08, 0700-1200  
 Sponsor or POC; VHF-FM 16 or Sector Lake Michigan at (414) 747-7182

The Event: Harbor Fest Dragon Boat Race  
 Location: Lake Michigan, Southaven, MI  
 Date/Time: 14-15 June 08, 0700-1900  
 Sponsor or POC; VHF-FM 16 or Sector Lake Michigan at (414) 747-7182

The Event: International Bayfest Boat Parade  
 Location: Lake Michigan, Green Bay, WI  
 Date/Time: 14 June 08, 2045-2130  
 Sponsor or POC; VHF-FM 16 or Sector Lake Michigan at (414) 747-7182

LNM: 24/08

**SECTION VIII - LIGHT LIST CORRECTIONS**

An Asterisk \*, indicates the column in which a correction has been made to new information

(1) No.	(2) Name and Location	(3) Position	(4) Characteristic	(5) Height	(6) Range	(7) Structure	(8) Remarks
4430	VERMILION DETACHED BREAKWATER LIGHT A	41-25-45.000N 082-21-45.500W	Q W	25 8	4	NB on post.	24/08
	*						
4435	VERMILION DETACHED BREAKWATER LIGHT B	41-25-45.100N 082-21-50.100W	FI W 6s	30 9	8	NB on post.	24/08
	*						
4440	VERMILION BREAKWATER DETACHED LIGHT C	41-25-44.100N 082-21-56.400W	Q W	25 8	4	NB on post.	24/08
	*						
4985	LOCKWOOD ENTRANCE CHANNEL JETTY LIGHT 1	41-29-17.000N 082-53-28.000W	FI G 4s				Private aid. 24/08
*	*	*	*	*	*	*	*

## SECTION VIII - LIGHT LIST CORRECTIONS (Continued)

(1) No.	(2) Name and Location	(3) Position	(4) Characteristic	(5) Height	(6) Range	(7) Structure	(8) Remarks
4985.1	LOCKWOOD ENTRANCE CHANNEL JETTY LIGHT 2	41-29-17.000N 082-53-28.000W	FI R 4s				Private aid. 24/08
*	*	*	*	*	*	*	*
4986	QUARRY ENTRANCE CHANNEL LIGHT 1	41-29-19.000N 082-53-43.000W	FI G 6s				Private aid. 24/08
*	*	*	*	*	*	*	*
4986.1	QUARRY ENTRANCE CHANNEL LIGHT 2	41-29-19.000N 082-53-43.000W	FI R 6s				Private aid. 24/08
*	*	*	*	*	*	*	*
11693	POLYCHROME LEADING LIGHT	45-25-12.000N 083-48-36.000W				68'	Red/Clear/Green Private aid. 24/08
*	*	*	*	*	*	*	*
15230	BLACK RIVER EAST BREAKWATER LIGHT 1	46-40-10.010N 090-02-54.360W	FI G 4s	31 9	9	SG on post.	24/08
16650	<i>Hat Point Lighted Bell Buoy 1</i>	47-57-00.835N 089-38-40.350W	FI G 4s		4	Green.	Maintained from May 28 to Oct. 14. 24/08
16825	Blake Point Five-Foot Shoal Buoy D Marks south side of shoal.	48-11-16.736N 088-24-09.904W				Black, red and black bands; can.	Maintained from May 28 to Oct. 14. 24/08
						*	*

---

**ENCLOSURES**


---

**(1) Summary of Dredging**[SUMMARY OF DREDGIN2.pdf](#)

Construction Operations in Effect

**(2) Great Lakes - General - Marine Events**[GREAT LAKES.pdf](#)

Summary of Marine Events

**(3) LAKE MICHIGAN - Sturgeon Bay and Canal**[sturgeon bay wisconsin3.pdf](#)

Proposed Changes to Navigation

**(4) LAKE ST CLAIR - St. Clair Cut-Off Channel**[mapstclaircut21.pdf](#)

- Severe Shoaling - Charts 14850, and 14853

**(5) LAKE SUPERIOR - Chart 14961**[image \(2\).pdf](#)

Annual Spring Gill Net Survey

**(6) NEW YORK STATE CANAL SYSTEM - Notice to Mariners**[5-12-08F NYSCS.pdf](#) [5-14-08F NYSCS.pdf](#) [5-22-08F NYSCS.pdf](#)

The above enclosures are the most current for the New York State Canal System.



**(7) US ARMY CORP OF ENGINEERS - Notice to Navigation Intrest**

[Army 5-22-08.pdf](#)   [Army 5-28-08.pdf](#)

The above Enclosures are the most current for the Army Corp of Engineers and can be found at <http://www.lre.usace.army.mil/who/operationsofficehomepage/latestnotices/index.cfm?>

LNM: 21/08

---

John E. Crowley, JR  
Rear Admiral, U. S. Coast Guard  
Commander, Ninth Coast Guard District

**SUMMARY OF DREDGING/CONSTRUCTION OPERATIONS IN EFFECT**

The LNM column is where the entry originally appeared and where detailed information may be obtained. The dates listed for completions are tentative.

<b>Location</b>	<b>LNM</b>	<b>Subject</b>	<b>Hours / Days</b>	<b>Until</b>
<b><u>LAKE ONTARIO</u></b>				
Rochester HBR Oswego HBR and Irondequoit Bay, NY	21/08	DREDGING	24 HRS A DAY/ 7 DAYS	13 SEP 08
<b><u>LAKE ERIE</u></b>				
Lorain Harbor, OH	15/08	SCHEDULED BRIDGE REPLACEMENT	0700-1500/ MON-FRI	01 JUL 08
Cleveland Harbor, OH	18/08	MAINTENANCE DREDGING	24 HRS A DAY/ 7 DAYS	30 JUL 08
Ashtabula River	13/08, 20/08	DREDGING	24 HRS/ 7 DAYS	15 JUN 08
Cleveland Harbor, OH	23/08	SCHEDULED BRIDGE INSPECTION	0800-1600/ 11 DAYS	09-20 JUN 08
Niagara River, NY	23/08	SCHEDULED BRIDGE MAINTENANCE	0700-1900/ 8 DAYS	02-10 JUN 08
<b><u>DETROIT RIVER</u></b>				
Trenton Channel, MI	51/07	SCHEDULED BRIDGE MAINTENANCE	0600-1430 /MON-FRI	TBD
Pte Mouille Access Channel	10/08	MAINTENANCE DREDGING	24 HRS A DAY/ 7 DAYS	30 AUG 08
<b><u>STRAITS OF MACKINAC</u></b>				
Cheboygan Harbor, MI	44/07	DAM REHABILITATION	0700-2200/ 7 DAYS	30 OCT 08
Mackinac Island, MI	15/08	HARBOR REPAIRS AND RENOVATIONS	0800-2000/ MON-SAT	15 JUN 08
<b><u>ST CLAIR RIVER</u></b>				
Port Huron, MI	16/08	BRIDGE REHABILITATION	VARIOUS	JUNE 09
<b><u>LAKE HURON</u></b>				
Saginaw River Bay Harbor	16/08	HYDRAULIC PIPELINE DREDGING	24 HRS A DAY/ 7 DAYS	01 JUN 08
Cheboygan Harbor, MI	18/08, 22/08	SCHEDULED BRIDGE INSPECTION	0800-1600/ 4 DAYS	06 JUN 08
<b><u>GREEN BAY</u></b>				
Green Bay Harbor	20/08	DREDGING	24 HRS A DAY/ 7 DAYS	30 SEP 08
<b><u>LAKE MICHIGAN</u></b>				
Two Rivers Harbor, WI	40/07	SCHEDULED BRIDGE DEMOLITION & CONSTRUCTION	24 HRS A DAY/ 7 DAYS	30 JUN 08
Wilmette Harbor, IL	07/08	MAINTENANCE DREDGING	24 HRS A DAY/ 7 DAYS	01 JUN 08
Chicago Harbor, IL	11/08	BRIDGE CLOSURES	VARIOUS	27 NOV 08
Chicago Harbor, IL	13/08	INOPERABLE STATUS	VARIOUS	TBD
Sturgeon Bay Harbor, WI	13/08	BRIDGE CONSTRUCTION	VARIOUS	OCT 08
Calumet Harbor, IL	15/08	SCHEDULED ELECTRICAL MAINTENANCE	VARIOUS	01 JUL 08
Sturgeon Bay Harbor, WI	13/08, 15/08	BRIDGE CONSTRUCTION	0600-1700/ MON-SAT	OCT 08
Chicago Harbor, IL	15/08, 16/08	BRIDGE REHABILITATION	0700-1500/ MON-FRI	30 SEP 08
Sturgeon Bay Harbor, WI	16/08	BRIDGE CONSTRUCTION	VARIOUS	OCT 08
Milwaukee Harbor, WI	11/08 17/08	BRIDGE REHABILITATION	0700-1630/ MON-SAT	01 NOV 08
Chicago Harbor, IL	17/08	BRIDGE MAINTENANCE	0600-0300/ MON-SAT	31 JUL 08
Milwaukee, WI	18/08	MAINTENANCE DREDGING	24 HRS A DAY/ 7 DAYS	29 JUN 08
Chicago Harbor, IL	18/08	BRIDGE MAINTENANCE	VARIOUS	31 JUL 08
Chicago Harbor, IL	19/08	BRIDGE MAINTENANCE	24 HRS A DAY/ 7 DAYS	31 JUL 08
Calumet Sag Channel	19/08	SCHEDULED BRIDGE INSPECTION	0730-1800/ SUN-FRI	23 MAY 08
Waukegan, IL	20/08	DREDGING	24 HRS A DAY/ 7 DAYS	30 JUN 08
Port Washington HBR, WI	21/08	DREDGING	0700-1900/ MON-SAT	01 DEC 08
St Joseph, MI	23/08	DREDGING	24 HRS A DAY/ 7 DAYS	15 SEP 08
Michigan City, IN	23/08	DREDGING	24 HRS A DAY/ 7 DAYS	01 JUL 08
Onokama & Whitehull, MI	23/08	DREDGING	24 HRS A DAY/ 7 DAYS	01 SEP 08
Chicago Harbor, IL	43/06, 23/08	BRIDGE REHABILITATION	0700-1500/ MON-FRI	30 OCT 08
Fox River, WI	23/08	EMERGENCY BRIDGE REPAIRS	0500-1600/ TUE-FRI	05 JUN 08
Saugatuck & South Haven Harbors, MI	24/08	DREDGING	24 HRS A DAY/ 7 DAYS	07 AUG 08
Milwaukee Harbor, WI	23/05/ 24/08	BRIDGE REHABILITATION	24 HRS A DAY/ 7 DAYS	01 NOV 08

**GREAT LAKES - GENERAL - MARINE EVENTS – SAFETY ZONES – SECURITY ZONES**

Events listed below are those events that may have accompanying special local regulations. Mariners transiting these areas should contact the U.S. Coast Guard with any questions and are asked to exercise caution when navigating through the area of the event.

<u>Location</u>	<u>LNM</u>	<u>Events</u>	<u>Dates</u>	<u>Time (Local)</u>	<u>POC or Sponsor</u>	<u>Number</u>
<b><u>ST LAWRENCE SEAWAY - SAFTY ZONE</u></b>						
Heart Island	16/08	Independence Day Fireworks Display	04 July 2008	2100-2200	Georgene McKinley	(315) 482-9531
Village of Cape Vincent	16/08	French Festival Fireworks	12 July 2008	2130-2230	Patricia A. Kinckley	(315) 654-4826
Clayton, NY	16/08	Clayton Fireworks	05 July 2008	2100-2200	Joelyynn Ramseier	(315) 778-8293
<b><u>ST LAWRENCE SEAWAY - SAFTY ZONE</u></b>						
Alexandria Bay, NY	16/08	Alexandria Bay Poker Run	21 June 2008	1000-1600	Sheryl Mackey	(416) 702-4316
Alexandria Bay, NY	16/08	Pirate Days Invasion	16 August 2008	1400-1600	Georgene Mckinley	(315) 482-9531
<b><u>LAKE ONTARIO – SAFETY ZONE</u></b>						
Brewerton, NY	16/08	Brewerton Fireworks	03 July 2008	2130-2200	Nick Chervinsky	(315) 727-4318
Baldwinsville, NY	16/08	Baldwinsville	04 July 2008	2100-2130	Bob Kesel	(315) 224-9212
Sodus Point, NY	16/08	Village Fireworks	03 July 2008	2200-2230	Frank Wackerle	(315) 573-2405
Syracuse, NY	16/08	City of Syracuse Fireworks Celebration	27 June 2008	2130-2230	Mary Beth Roach	(315) 382-7776
Rochester, NY	16/08	Rochester Harborfest	21 June 2008	2130-2200	James Farr	(585) 428-6866
Olcott, NY	24/08	Olcott NY Fireworks	03 July 2008	2100-2230	Jane Voelpel	(716) 628-4007
<b><u>LAKE ONTARIO - MARINE EVENTS</u></b>						
Baldwinsville, NY	16/08	Seneca Riverdays	11-12 July 2008		Tim Horan	(315) 635-3666
Palmyra, NY	16/08	Daily Crew Practices	01 May – 01 Nov 2008	1600-2100/M-F 0600-1200/SAT	Bruce Weick	(585) 377-8213
Rochester, NY	16/08	Shorline Triathlon	27 July 2008	0815-110	David or Ellen Boutillier	(585)732-1956
Rochester, NY	16/08	Rochester Harborfest Parade of Lights	20 June 2008	2000-2200	James Farr	(585) 428-6866
Rochester, NY	16/08	Ultimate Marine Group J/22 World Championship	17-24 August 2008	0900-1800	Mark Seretl	(585) 248-5490
Oswego, NY	16/08	Oswego Yacht Club Hospice Cup Regatta	07 June 2008	0800-1900	John Gary	(315) 343-9459
Oswego, NY	16/08	Oswego Yacht Club Sail Oswego Regatta	25-26 July 2008	1200-1500	John Gary	(315) 343-9459
Oswego, NY	16/08	Oswego Yacht Club all J-Boat Regatta	16-17 August 2008	1200-1500	John Gary	(315) 343-9459
Pittsford, NY	16/08	Annual Practice Schedule of Pittsford Crew	April-November		Betsy Twohig-Barrett Karen Gerwitz	(585) 264-0562 (585) 342-5511
Oswego Harbor, NY	16/08	Oswego Yacht Club Weekly Races	May-Nov		John Gary	(315) 598-5646
Ontario Canada	21/08	2008 Ontario Sailing Event Series Regatta #2 The Location	26-27 July 2008	0900-1600	Peter Lammens	(613) 345-6471
Rochester, NY	21/08	Rochester Open Water Challenge	28June2008	0900-1800	Ken Alt Father	(585) 288-2830
Sackets Harbor, NY	21/08	Hospice Charity Cup Regatta	02 Aug 2008	1000-1600	Bob Wardwell	(315) 778-7299
Liverpool, NY	21/08	Toyota/Sea Doo US Regional Championship #1	31 May-01 Jun 2008	0630-1700	Jennifer Handler	(585) 388-0049
Rochester, NY	21/08	Toyota Sea Doo US Regional Championship #2	4-6 July 2008	0630-1700	Jennifer Handler	(585) 388-0049
Rochester, NY	22/08	Hospice Regatta Fleet Review	16 Aug 2008		Larry Sill	(585) 227-9399
Liverpool, NY	22/08	Syracuse Hydrofest	12-13 July 2008		Thomas Vielhauer	(315) 250-6470 or (315) 446-2443
Baldwinsville, NY	22/08	Seneca River Waterchestnut Relay	11 July 2008	1900-2030	Amy Samuels	(315) 256-5321
Wayne County, NY	24/08	Tom Graves Memorial 03 July 2008	03 July 2008	2200-2230	Harry DeKing	(315) 594-2691
Alexandria Bay, NY	24/08	8th Annual Paddle for Betterment	26 July 2008	0900-1100	Carolyn Curly	(315) 482-9980

**GREAT LAKES - GENERAL - MARINE EVENTS – SAFETY ZONES – SECURITY ZONES**

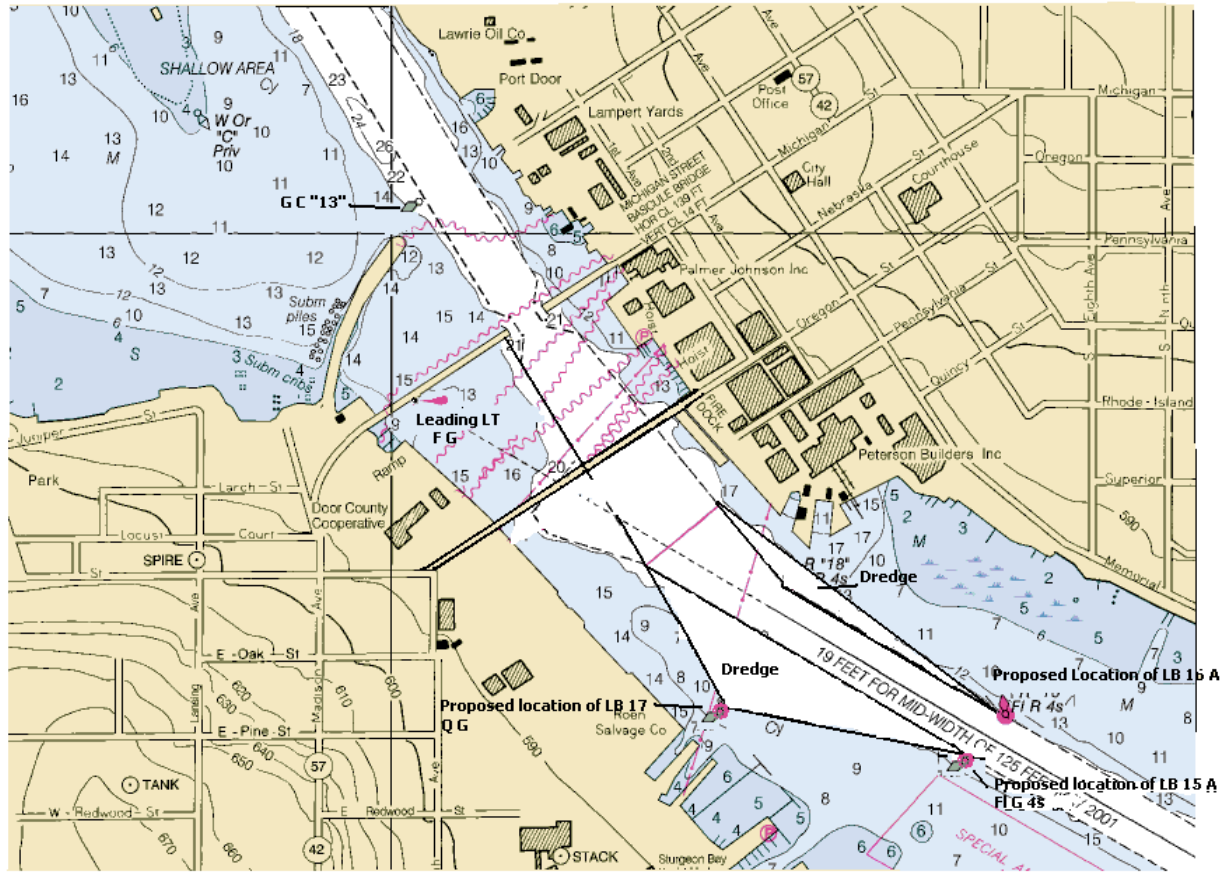
Events listed below are those events that may have accompanying special local regulations. Mariners transiting these areas should contact the U.S. Coast Guard with any questions and are asked to exercise caution when navigating through the area of the event.

<u>Location</u>	<u>LNM</u>	<u>Events</u>	<u>Dates</u>	<u>Time (Local)</u>	<u>POC or Sponsor</u>	<u>Number</u>
<b><u>NIAGARA RIVER - MARINE EVENTS</u></b>						
North Tonawanda, NY	16/08	Thunder on Niagara	31 May-01 June 2008	1100-1800	Dan Kanfoush	(716) 284-9358
Grand Island, NY	16/08	Paddle Up Niagara 2008	26 July 2008	1200-1500	Paul Leuchner	(716) 704-0546
Tonawanda, NY	16/08	Duck Race	19 July 2008	1500-1530	Lynne M. Smith	(716) 285-3403
Grand Island, NY	16/08	Antique Boat Show	06 August 2008	1000-1600	Tom Frauenheim	(716) 773-7629
Youngstown, NY	22/08	Youngstown Level Regatta	26-27 July 2008	0830-1600	Stan Pasek	(353)422-1872
Youngstown, NY	22/08	Jack Beatty Hospice Memorial Regatta	08 Aug 2008	0830-1730	Paul Beatty Jr.	(716) 998-5777
<b><u>ERIE CANAL – MARINE EVENTS</u></b>						
Fairport, NY	21/08	Lift Bridge Regatta	21 Sep 2008	0700-1800	Paul Nickerson	(440) 238-9378
<b><u>LAKE ERIE - MARINE EVENTS</u></b>						
Mentor Headlands, OH	07/08	Triathlon	10 Aug 08	0600-1100	Mickey Rzymek	
Cleveland, OH	08/08	FLW Fishing Tournament	24-27 Sep 08	0700-1500	Kevin Hunt	
Buffalo, NY	16/08	Great Lakes International Challenge Cup Race	13-15 June 2008	0900-1600	Timothy M. Hunt	(716) 440-7108
Erie, PA	16/08	Swim the Bay Event	28 June 2008	0900-1100	Patricia Davis	(814) 450-9526
Erie, PA	16/08	US Sailing Team Racing Championships	15-17 August 2008	0800-1800	David McBrier	(814) 455-4799
Buffalo, NY	16/08	Buffalo Harbor Sailing Club 2008 Race Season	15 May-06 Aug 2008	various times	Rick Lenard	(716) 856-6314
Grand Island, NY	16/08	Western New York Fun Run	14 June 2008	1000-1600	Humphrey Stinson	(716) 946-0332
Buffalo, NY	16/08	BYC J/22 Raw Bar Regatta	19-20 July 2008	0900-1630	Joe Gelsomino	(716) 861-8323
Buffalo, NY	16/08	Queen City Regatta and Mayors Cup Regatta	9-10 Aug 2008	0900-1700	Timothy M. Hunt	(716) 440-7108
Toledo to Buffalo to Erie	21/08	Great Lakes Single handed Society Lake Erie Solo Challenge	23-27 August 2008	0930-?	Paul Nickerson	(440) 238-9378
Erie, PA	21/08	Lake Erie Interclub Cruise	28 June - 02 July 2008	0530-1900	Diane Mitra	(814) 459-1670
Monroe County	22/08	Canal Days Kayak/ Canoe Race	27 July 2008		Peter Obrien	(585) 506-2671
Rocky River OH	23/08	FW Roberts Race (sailboat race)	13 June 08	0700 - ?	Harald Bransch	(440) 333-1155
Cleveland, OH	23/08	Shooters Boat Show	20-22 June 08	2100-2300	Roger Loecy	(216) 798-2633
Cleveland, OH	23/08	Bras Across the Cuyahoga	04 July 08	1300-1400	Tom Newman	(216) 533-1160
Cleveland, OH	23/08	AST Dew Tour	17-20 July 08	various times	Robert Eschbach	(630) 470-2375
Lorain, OH	23/08	Lorain Sprint Triathlon	24 August 08	0730-1000	Rick Cadwell	(440) 281-6210
Bay Village, OH	23/08	Huntington Triathlon	20 July 08	0730-0900	Rick Cadwell	(440) 281-6210
Fairport, OH	23/08	Grand River Hospice Cup Race	22 August 08	0700-0800	Mike Nolan	(440) 346-4188
Fairport, OH	23/08	Grand River Hospice Cup Race	23-24 August 08	1000- 1500	Mike Nolan	(440) 346-4188
Lorain, OH	23/08	Summer Triathlon	06 July 08	0730-0900	Rick Cadwell	(440) 281-6210
Cleveland, OH	23/08	Cleveland National Air Show	30 August 08 – 01September 8	Various	Daniel Biggs	(216) 224-7442
Lorain, OH	23/08	BPYC Blessing	06 July 08	1100-1200	Edward Nowak	(216) 276-3026
Cleveland, OH	23/08	Dragon Boat Fest	05 July 08	1100-1700	Tom Newman	(216) 534-8715
Cleveland, OH	23/08	Head of the Regatta	20 September 08	0800-1500	Timothy Marcovy	(216) 241-7740
Erie, PA	24/08	Erie Summer Festival of the Arts	28 June 2008	2200-2230	Dave Stevens	(814) 218-1373
Rocky River, OH	24/08	Leukemia Cup Regatta	28 June 2008	0900-1500	Dan Clevenger	(216) 496-8465

**GREAT LAKES - GENERAL - MARINE EVENTS – SAFETY ZONES – SECURITY ZONES**

Events listed below are those events that may have accompanying special local regulations. Mariners transiting these areas should contact the U.S. Coast Guard with any questions and are asked to exercise caution when navigating through the area of the event.

<u>Location</u>	<u>LNM</u>	<u>Events</u>	<u>Dates</u>	<u>Time (Local)</u>	<u>POC or Sponsor</u>	<u>Number</u>
<b><u>LAKE ERIE - SAFTY ZONE</u></b>						
Cleveland , OH	08/08	Queens Cup Canoe Race	06 June 08	1230-1700	John Harkness	
Fairport OH	23/08	Fairport Harbor Marti Gras Fireworks Show	06 July 2008	2145-2245	Mike Suhajda	(440) 352- 9481
Cleveland, OH	23/08	Cleveland National Air Show	30 August - 01 September 08	various times	Roger Loecy	(216) 798-2633
Cleveland, OH	23/08	Cleveland 4th of July Fireworks Show	04July 08	2145-2245	Tom Newman	(216) 533-1160
Lorain, OH	23/08	Lorain Fireworks Show	04July 08	2145-2245	Rick Novak	(440) 759-0622
Mentor, OH	23/08	Mentor Fireworks Show	03July 08	2200-2230	Matt Clausen	(440) 257-7214
<b><u>LAKE MICHIGAN - MARINE EVENTS</u></b>						
Holland, WI	24/08	Lake Macatawa Triathlon	09 June 08	0700-1200	Sector Lake Michigan	(414) 747-7182
Southaven, MI	24/08	Harbor Fest Dragon Boat Race	14-15 June 08	0700-1900	Sector Lake Michigan	(414) 747-7182
Green Bay, WI	24/08	International Bayfest Boat Parade	14 June 08	2045-2130	Sector Lake Michigan	(414) 747-7182
<b><u>LAKE MICHIGAN - SAFTY ZONE</u></b>						
Milwaukee, WI	15/08	River Splash	30 May 08	1930-2100	Sector Lake Michigan	(414) 747-7182
Milwaukee, WI	15/08	Pride Fest	30 May 08	1930-2100	Sector Lake Michigan	(414) 747-7182
Port Washington, WI	15/08	Port Washington Pirate Fest	07 June 08	1900-2100	Sector Lake Michigan	(414) 747-7182
Spring Lake, MI	15/08	Spring Lake Heritage Fest	16 June 08	2200-2300	Sector Lake Michigan	(414) 747-7182
Racine, WI	15/08	Racine Harbor Fest	20 June 08	2130-2200	Sector Lake Michigan	(414) 747-7182
Elberta, MI	15/08	Elberta Solstice Fest	20 June 08	2130-2300	Sector Lake Michigan	(414) 747-7182
Port Washington, WI	24/08	Port Washington Pirate Festival	06 June 08	1800-2000	Sector Lake Michigan	(414) 747-7182
Milwaukee, WI	24/08	Pridefest Fireworks	07 June 08	2130-2200	Sector Lake Michigan	(414) 747-7182
Manitowoc, WI	24/08	Thunder on the Lakeshore	07 June 08	2100-2130	Sector Lake Michigan	(414) 747-7182
Chicago, IL	24/08	Navy Pier Fireworks	07 June 08	2200-2300	Sector Lake Michigan	(414) 747-7182
Chicago, IL	24/08	Navy Pier Fireworks	11 June 08	2100-2200	Sector Lake Michigan	(414) 747-7182
Chicago, IL	24/08	Navy Pier Fireworks	14 June 08	2200-2300	Sector Lake Michigan	(414) 747-7182
Chicago, IL	24/08	Navy Pier Fireworks	18 June 08	2100-2200	Sector Lake Michigan	(414) 747-7182
Chicago, IL	24/08	Navy Pier Fireworks	21 June 08	2200-2300	Sector Lake Michigan	(414) 747-7182
Chicago, IL	24/08	Navy Pier Fireworks	25 June 08	2100-2200	Sector Lake Michigan	(414) 747-7182
Chicago, IL	24/08	Navy Pier Fireworks	28 June 08	2200-2300	Sector Lake Michigan	(414) 747-7182
Green Bay, WI	24/08	Public Fireworks Display	13 June 08	2030-2200	Sector Lake Michigan	(414) 747-7182
Green Bay, WI	24/08	International Bay Fest Fireworks	14 June 08	2045-2130	Sector Lake Michigan	(414) 747-7182
Milwaukee, WI	24/08	Polish Fest	20 June 08	2200-2300	Sector Lake Michigan	(414) 747-7182
Sturgeon Bay, WI	24/08	Elberta Solstice Festival	21 June 08	2130-2230	Sector Lake Michigan	(414) 747-7182
East Jordan, MI	24/08	Jordan Valley Freedom Festival	21 June 08	1900-2200	Sector Lake Michigan	(414) 747-7182
Spring Lake, MI	24/08	Spring Lake Heritage Festival	21 June 08	2200-2300	Sector Lake Michigan	(414) 747-7182
Milwaukee, WI	24/08	Summerfest	26 June 08	2200-2300	Sector Lake Michigan	(414) 747-7182

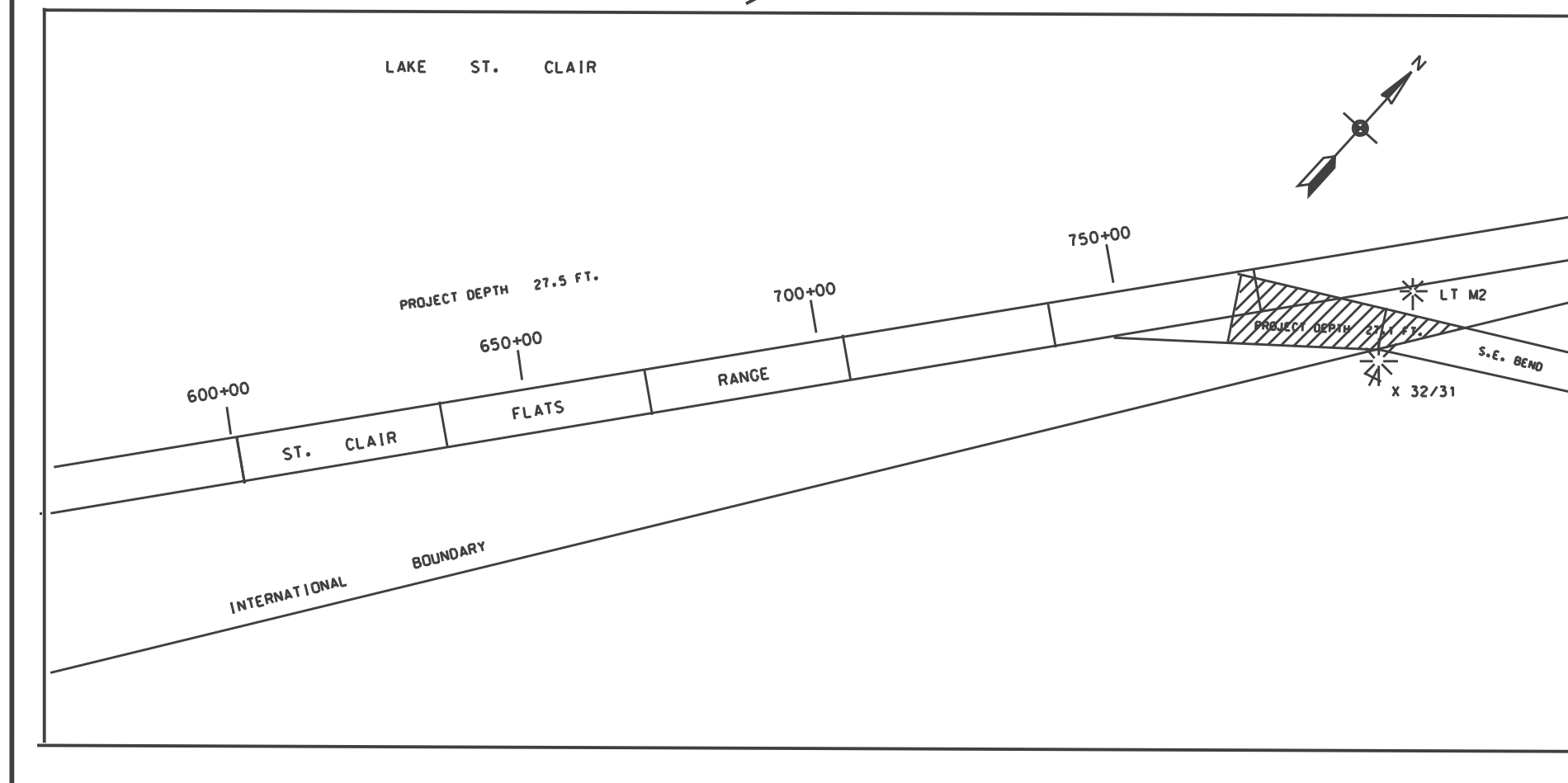
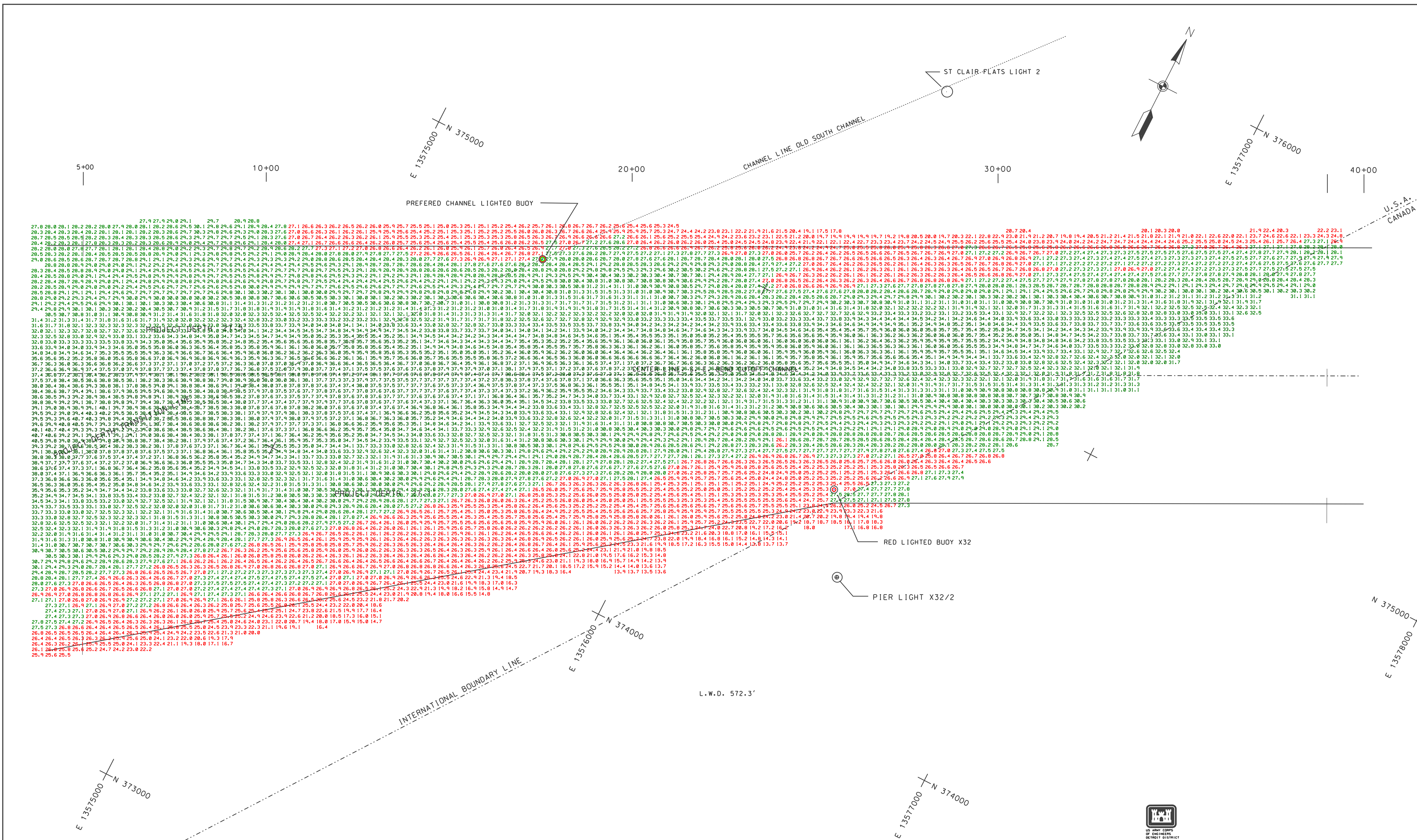


**STURGEON BAY  
WISCONSIN**

Scale 1:10,000  
SOUNDINGS IN FEET



**NOT FOR NAVIGATIONAL USE**



LEGEND	DIRECTIONS	NOTES
<p>THE INFORMATION DEPICTED ON THIS MAP IS BASED ON THE DATA OBTAINED ON THE DATES INDICATED AND CAN ONLY BE CONSIDERED AS INDICATING THE GENERAL CONDITIONS AT THE TIME.</p> <p>LOW WATER DATUM ELEVATIONS AND PROJECT DEPTHS ARE REFERRED TO INTERNATIONAL GREAT LAKES DATUM, 1985</p> <p>GRID COORDINATES GRIDS SHOWN ARE BASED ON NATIONAL GEODETIC SURVEY PROJECTION TABLES, STATE OF MICHIGAN, SOUTH ZONE (2113), LAMBERT PROJECTION, 1983 NORTH AMERICAN DATUM.</p>	<p>ALL DIRECTIONS ARE GRID AZIMUTHS REFERRED TO NORTH ZERO.</p> <p>PROJECT DEPTHS ARE AS INDICATED ABOVE.</p> <p>THE AUTOMATED ELECTRONIC SURVEY WAS CONDUCTED BY JAMES BYRNE, ENCLAB, ABOARD THE USACE SURVEY VESSEL WHEELER</p> <p>AUTOMATED EQUIPMENT USED</p> <p>POSITIONING: TSS POS-MV DATA PROCESSOR: DELL 330 PC SOFTWARE: SURFACK PLOTTER: ENCAD, CADJET 2 SONIC SOUNDERS: RESON SEABAT 8125</p>	<p>1. GAGES USED WERE OBTAINED ELECTRONICALLY FROM NOAA GAGE AT ST. CLAIR SHORES, MICHIGAN, VIA THE INTERNET.</p> <p>2. POSITIONS WERE DETERMINED BY GPS REFERENCE BEACON FREQUENCY 319 KHZ AT 200 FPS.</p> <p>3. DEPTH MEASURED USING RESON SEABAT 8125 ULTRA HIGH RESOLUTION FOCUSED MULTIBEAM SOUNDING SYSTEM AND GOOD DIGIBAR PRO DIB200 VELOCITY PROFILER.</p> <p>4. EDITED MULTIBEAM SOUNDINGS WERE SORTED INTO A 37 FT. BY 15 FT. MATRIX; THE AVERAGE OF THE SOUNDINGS LOCATED IN THE CELL CENTER.</p>

NO.	DATE	REVISION	BY

**U.S. ARMY ENGINEER DISTRICT, DETROIT**  
**CORPS OF ENGINEERS**  
**DETROIT, MICHIGAN**

DESIGNED BY: DETROIT AREA OFFICE 15 OCTOBER 2007

DRAWN BY: J.B.

CHECKED BY:

REVIEWED BY:

SUBMITTED BY:

APPROVAL RECOMMENDED: P.E. DATE

CHIEF, PROJ./OPNS-SECT CHIEF, OPS BRANCH

APPROVED: P.E. DATE

CHIEF, CONST - OPNS DIVISION

**LAKE ST. CLAIR, MICHIGAN**  
**TRANSITION TO CUTOFF CHANNEL**  
**CS 5+00 TO CS 39+00**  
**MULTI-BEAM SWEEP SURVEY**  
**AVERAGE DEPTH PLOT**

SCALE AS SHOWN

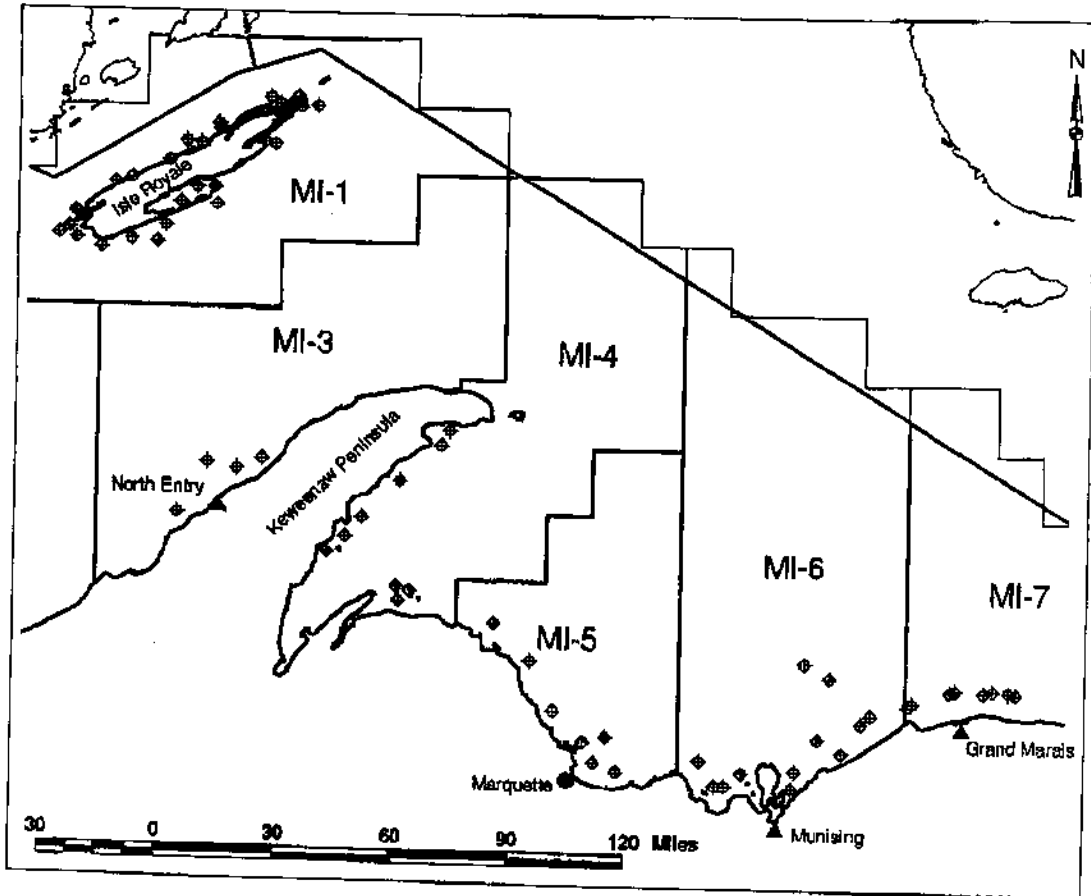
DRAWING NUMBER: 1sc23s1007.dgn

SHEET 23 OF 23

**2008 spring lake trout survey and special study schedule for Marquette Fisheries Research Station (MFRS), Fisheries Division, Michigan Department of Natural Resources.**

Dates*	Region	Stations	Fished by
21-30 April	Munising	Grand Portals, Big Reef, Au Train Pt., Wood Island, Grand Island	R/V Lake Char, MFRS
01-07 May	Marquette, Big Bay, Huron Islands/Bay	White Rocks, Shot Pt., Big Bay, Marquette, Huron Islands, Point Abbaye	R/V Lake Char, MFRS
06-09 May	North Entry	North Entry of portage canal	R/V Lake Char, MFRS
12-19 May	Isle Royale	All areas around Isle Royale	R/V Lake Char, MFRS
19-21 May	Keweenaw Bay	Traverse Island, Bete Grise	R/V Lake Char, MFRS
01 May-01 June	Grand Marais	Grand Marais, Deer Park, Au Sable Point	CORA
1 <sup>st</sup> week of each month, May-Dec	Marquette	3 miles ENE of lower harbor; 5 miles NE of upper harbor.	R/V Lake Char, MFRS

\* dates may shift if there are weather delays.



Spring lake trout survey and special study sampling stations for 2008.





John L. Buono  
Chairman

**New York State Thruway Authority**  
**New York State Canal Corporation**

200 Southern Blvd., P.O. Box 22058, Albany, NY 12201-2058

[www.thruway.state.ny.us](http://www.thruway.state.ny.us)



Michael R. Fleischer  
Executive Director  
TDD/TTY 1-800-253-6244

# **NEW YORK STATE CANAL SYSTEM**

## **NOTICE TO MARINERS**

**Chart 14786**

**Erie Canal**

**May 12, 2008**

Mariners are advised that drilling and sampling activities will commence on Tuesday, May 13th on the Erie Canal in the vicinity of Bridge E-19A and Riverlink Park in Amsterdam.

Obstruction buoys will mark the location of the drill sites located on the northernmost section of the navigation channel. A small spud barge will also be located on the north side of the navigation channel. Available navigable channel width through this area will be restricted to approximately 125 feet on the south side of the navigation channel.

Mariners should proceed with caution and at a "No Wake" speed through this area until further notice.

For updates and information, mariners are advised to monitor 1-800-4CANAL4 and [www.nyscanals.gov](http://www.nyscanals.gov). Additionally, mariners may sign up for automatic e-mail and text message alerts through the new Canal TRANSalert service. This service is offered to notify mariners of major incidents and emergencies that may affect navigation on the New York State Canal System. To register for this service, please visit [www.nyscanals.gov/tas/](http://www.nyscanals.gov/tas/).

Carmella R. Mantello  
Director, New York State  
Canal Corporation



John L. Buono  
Chairman

**New York State Thruway Authority**  
**New York State Canal Corporation**  
200 Southern Blvd., P.O. Box 22058, Albany, NY 12201-2058  
[www.thruway.state.ny.us](http://www.thruway.state.ny.us)



Michael R. Fleischer  
Executive Director  
TDD/TTY 1-800-253-6244

# NEW YORK STATE CANAL SYSTEM

## NOTICE TO MARINERS

**May 14, 2008**

To avoid any unnecessary inconvenience or delays, mariners seeking passage through a Canal Corporation lock are advised to arrive at least 20 minutes prior to the scheduled closing time. Vessels which cannot safely pass through the structure prior to the scheduled closing time will not be admitted.

Mariners are further advised to arrive at least 90 minutes prior to the scheduled closing time if seeking to transit the Waterford Flight (Locks E-2 through E-6) either eastbound or westbound. No overnight docking within the Waterford Flight is permitted, and average transit time through the Flight is 90 minutes.

Hours of operation for all locks for the 2008 navigation season are as follows:

May 1 - May 22: 7:00 AM to 5:00 PM

May 23 - September 3: 7:00 AM to 10:00 PM

September 4 - November 15: 7:00 AM to 5:00 PM

Please note: The dates and hours of operation are dependent upon weather.

For updates and information, mariners are advised to monitor 1-800-4CANAL4 and [www.nyscanals.gov](http://www.nyscanals.gov). Additionally, mariners may sign up for automatic e-mail and text message alerts through the new Canal TRANSalert service. This service is offered to notify mariners of major incidents and emergencies that may affect navigation on the New York State Canal System. To register for this service, please visit [www.nyscanals.gov/tas/](http://www.nyscanals.gov/tas/).

Carmella R. Mantello



John L. Buono  
Chairman

**New York State Thruway Authority**  
**New York State Canal Corporation**

200 Southern Blvd., P.O. Box 22058, Albany, NY 12201-2058  
[www.thruway.state.ny.us](http://www.thruway.state.ny.us)



Michael R. Fleischer  
Executive Director  
TDD/TTY 1-800-253-6244

# NEW YORK STATE CANAL SYSTEM

## NOTICE TO MARINERS

**May 22, 2008**

Mariners are advised that summer hours for navigation on the New York State Canal System begin on Friday, May 23, 2008 and are in effect through Wednesday, September 3, 2008. The summer hours are 7:00 AM through 10:00 PM daily. Dates and hours of operation are dependent upon weather. Mariners should refer to the Notice to Mariners dated May 14, 2008 which advised on necessary lock arrival times to complete locking(s) prior to the scheduled closing time.

For updates and information, mariners are advised to monitor 1-800-4CANAL4 and [www.nyscanals.gov](http://www.nyscanals.gov). Additionally, mariners may sign up for automatic e-mail and text message alerts through the new Canal TRANSalert service. This service is offered to notify mariners of major incidents and emergencies that may affect navigation on the New York State Canal System. To register for this service, please visit [www.nyscanals.gov/tas/](http://www.nyscanals.gov/tas/).

Carmella R. Mantello  
Director, New York State  
Canal Corporation



**US Army Corps  
of Engineers**

Detroit District  
Operations Office  
P.O. Box 1027  
Detroit, MI 48231-1027  
(313) 226-6797  
FAX - (313) 226-3519

# Notice to Navigation Interests

---

Notice No. L08-13

Date: 22 MAY 2008

---

Waterway: LAKE SUPERIOR

Location: MICHIGAN

---

CELRE-OT-T

CONDITION OF FEDERAL NAVIGATION CHANNEL  
GRAND TRAVERSE BAY HARBOR

1. Recent surveys indicate shoaling in the Federal navigation channel. Please refer to our website for further information and updates on this project.

Our internet address is: <http://www.lre.usace.army.mil/who/operationsofficehomepage/>

2. Mariners are urged to use extreme caution in the area.

3. Questions regarding this notice may be directed to our Operations Office.

WILLIAM J. LEADY  
Lieutenant Colonel, U.S. Army  
District Commander

Notice to the Postmaster:

It is requested that the above notice be conspicuously and continuously posted until November 30, 2008.



**US Army Corps  
of Engineers®**

Detroit District  
Operations Office  
P.O. Box 1027  
Detroit, MI 48231-1027  
(313) 226-6797  
FAX - (313) 226-3519

# Notice to Navigation Interests

---

Notice No. L08-14

Date: 28 MAY 2008

---

Waterway: LAKE ERIE

Location: MICHIGAN

---

CELRE-OT-T

CONDITION OF FEDERAL NAVIGATION CHANNEL  
BOLLES HARBOR

1. Recent surveys indicate shoaling in the Federal navigation channel. Please refer to our website for further information and updates on this project.

Our internet address is: <http://www.lre.usace.army.mil/who/operationsofficehomepage/>

2. Mariners are urged to use extreme caution in the area.

3. Questions regarding this notice may be directed to our Operations Office.

WILLIAM J. LEADY  
Lieutenant Colonel, U.S. Army  
District Commander

Notice to the Postmaster:

It is requested that the above notice be conspicuously and continuously posted until November 30, 2008.