

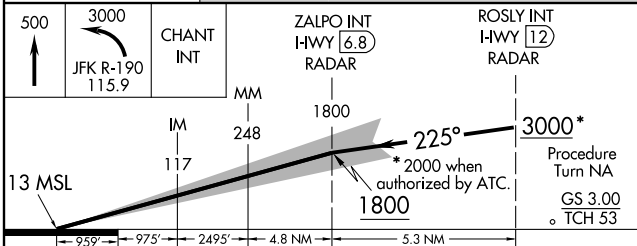
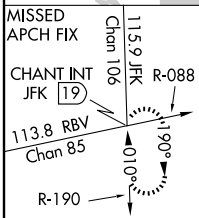
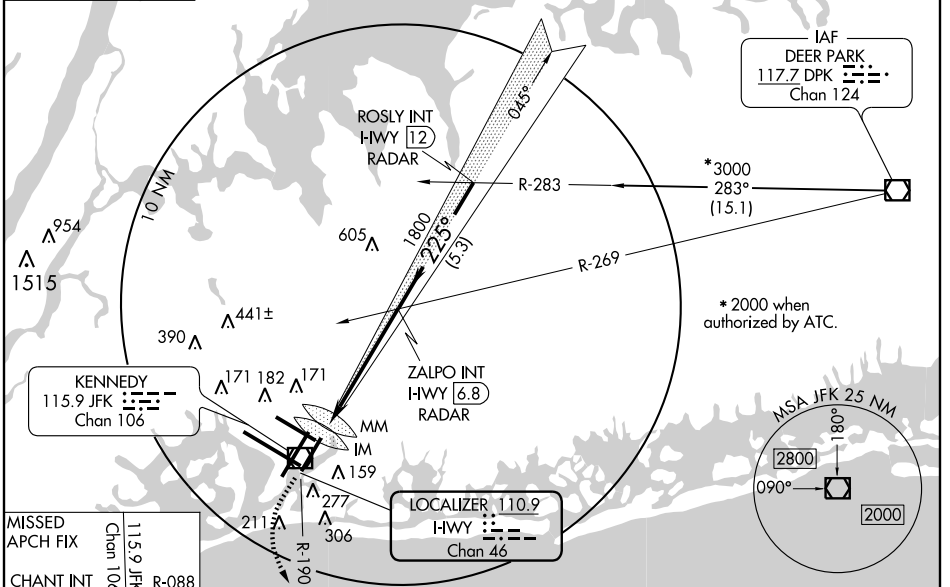
# ILS RWY 22L (CAT III)

NEW YORK/JOHN F. KENNEDY INTL (JFK)

LOC/DME I-HWY <b>110.9</b> Chan <b>46</b>	APP CRS <b>225°</b>	Rwy Idg <b>8400</b> TDZE <b>13</b> Apt Elev <b>13</b>
---	------------------------	---

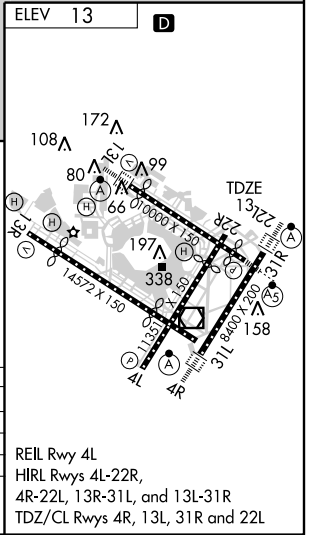
<p>▽ ▲</p>	<p>ALSF-2 ▲</p>	<p>MISSED APPROACH: Climb to 500 then climbing left turn to 3000 via JFK R-190 to CHANT Int/19 DME and hold.</p>
----------------	---------------------	--

<p>ATIS ARR (NE) (SW) <b>128.725 117.7 115.4</b> DEP <b>115.1</b></p>	<p>NEW YORK APP CON <b>127.4 269.0</b></p>	<p>KENNEDY TOWER Rwys 4R/22L and 13L/31R <b>119.1 281.55</b> Rwys 4L/22R and 13R/31L <b>123.9 281.55</b></p>	<p>GND CON <b>121.9 348.6</b></p>	<p>CLNC DEL <b>135.05 348.6</b></p>
---	--	--	---------------------------------------	---



CATEGORY	A	B	C	D
S-ILS 22L		CAT IIIA RVR 07		
S-ILS 22L		CAT IIIB RVR 06		
S-ILS 22L		CAT IIIC NA		

## CATEGORY III ILS - SPECIAL AIRCREW & AIRCRAFT CERTIFICATION REQUIRED



NE-2, 12 FEB 2009 to 12 MAR 2009

NE-2, 12 FEB 2009 to 12 MAR 2009