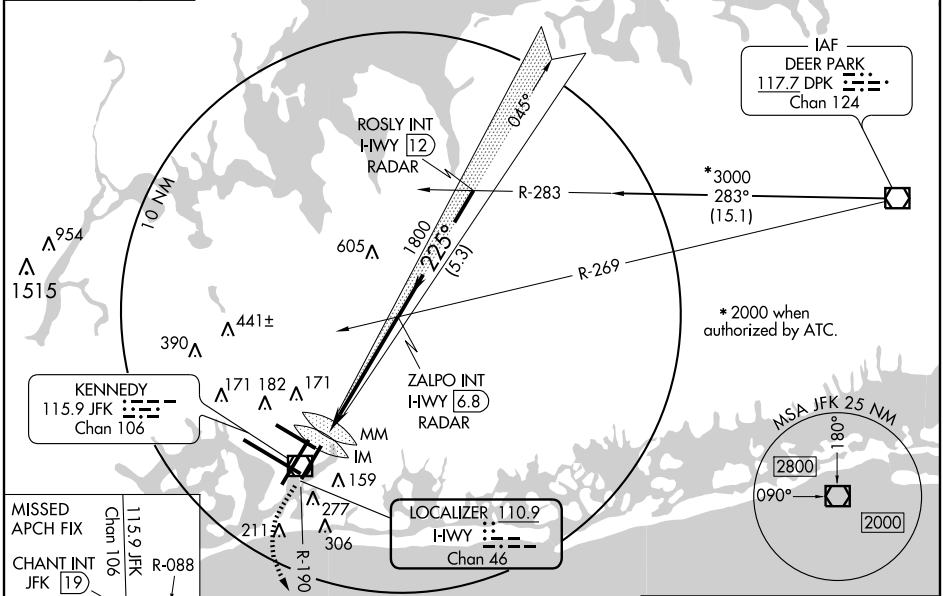


LOC/DME I-HWY 110.9 Chan 46	APP CRS 225°	Rwy Idg 8400 TDZE 13 Apt Elev 13
---	------------------------	---

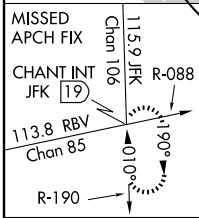
ILS RWY 22L (CAT II)
NEW YORK / JOHN F. KENNEDY INTL (JFK)

MISSED APPROACH: Climb to 500 then climbing left turn to 3000 via JFK R-190 to CHANT Int/19 DME and hold.	ALS-F-2	KENNEDY TOWER Rwy 4R/22L and 13L/31R 119.1 281.55 Rwy 4L/22R and 13R/31L 123.9 281.55	GND CON	CLNC DEL
	NEW YORK APP CON 127.4 269.0		121.9 348.6	135.05 348.6



NE-2, 12 FEB 2009 to 12 MAR 2009

NE-2, 12 FEB 2009 to 12 MAR 2009



Profile view: DH 113, RA 113, MM, IM. Vertical path starts at 13 MSL, rises to 1800 ft at 4.8 NM, and then to 3000 ft at 5.3 NM. Procedure Turn NA, GS 3.00°, TCH 53. *2000 when authorized by ATC.

CATEGORY	A	B	C	D
S-ILS 22L	113/12	100	RA 113	

CATEGORY II ILS - SPECIAL AIRCREW & AIRCRAFT CERTIFICATION REQUIRED

