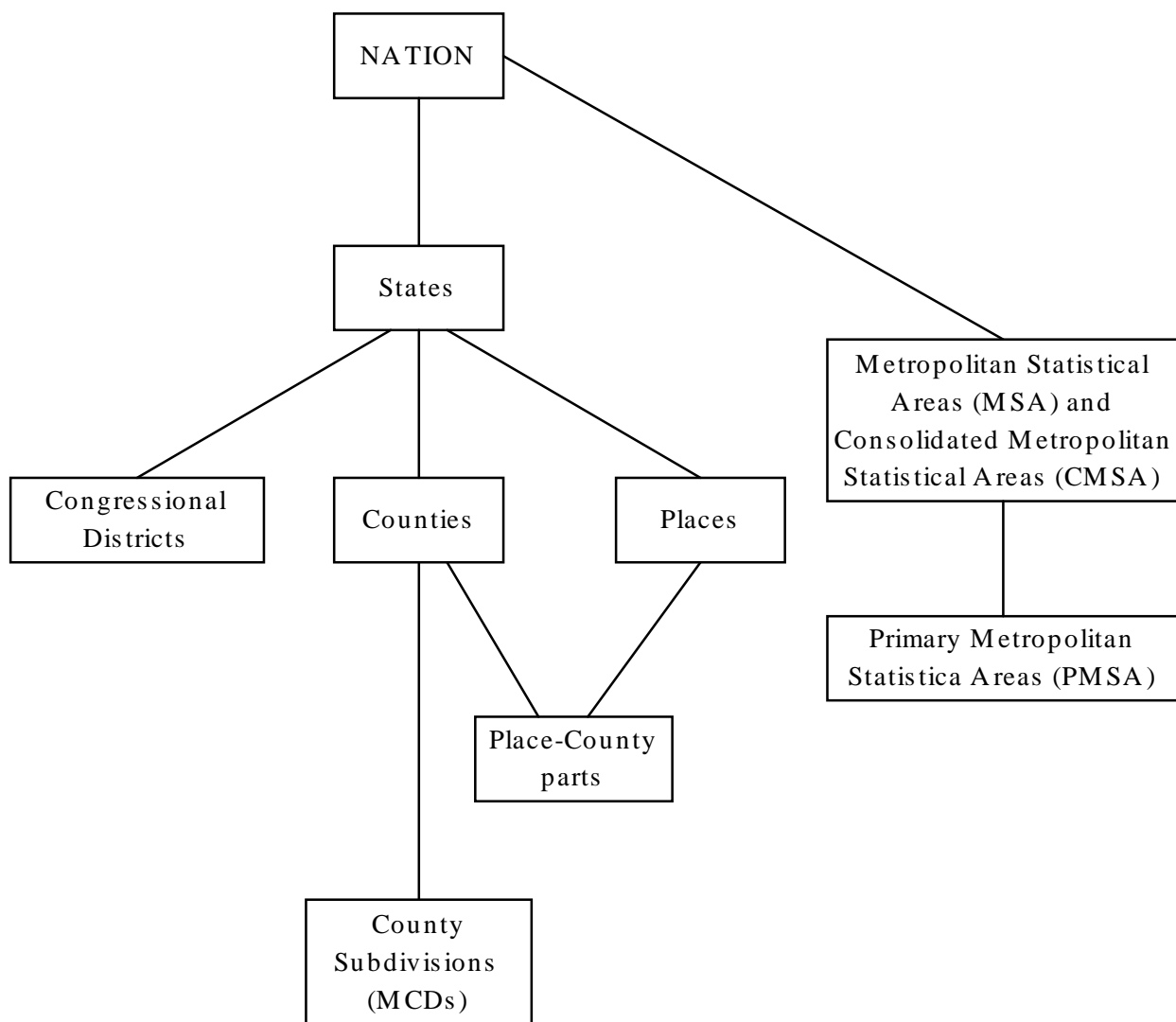


## Census 2000 Supplementary Survey Geography Notes

The Census 2000 Supplementary Survey produces estimates for areas of 250,000 or more population. It uses common political divisions, such as states, counties, places and metropolitan statistical areas. This document contains an abbreviated explanation of the Census Bureau's geographic hierarchy, and some of the more common terms, to get you started using the Census 2000 Supplementary Survey.

Not all levels of geography are represented in the Census 2000 Supplementary Survey data products. The following diagram shows the portions of the Census Bureau's geographic hierarchy that are included in the Census 2000 Supplementary Survey data products.



Data from the Census 2000 Supplementary Survey are available for geographic areas that have a household population of 250,000 or greater, and are *wholly contained within self-representing Primary Sampling Units*. PSU is short for primary sampling unit. It is a county or a group of counties that are treated as a single sample unit. Each PSU falls within the boundary of a state.

The Census 2000 Supplementary Survey uses a two-stage sample of housing units. The first stage of sampling divides the state into PSUs and selects a sample of these PSUs. Then, the final (second stage) sample of housing units is taken from the chosen PSUs. Certain PSUs (roughly, those with an estimated population of 250,000 or more) are designated as "self-representing" (SR). The remaining PSUs are referred to as "non-self representing" (NSR). The NSR PSUs are grouped into clusters and only two are chosen to represent all of the PSUs in the cluster. In the final sample, housing units are taken from all the SR PSUs and only the two selected NSR PSUs.

For more information on PSU definition and selection for sample, click on "Accuracy of the data" in the Advanced Methodology section of the American Community Survey web site (<http://www.census.gov/acs/www>).

The Census 2000 Supplementary Survey data are available for the following geographic summary levels:

Summary Level		Number of areas to be published	Comments
010	Nation	1	
040	State	51	includes the District of Columbia
050	County	216	Marion County, Florida is the only county with a household population greater than 250,000 which we are unable to publish.
060	County Subdivision (MCD)	26	
155	Place-County	68	
160	Place	64	Three cities – Lexington, Kentucky; Louisville, Kentucky; and Corpus Christi, Texas – have a household population greater than 250,000 but cannot be published.
380	Metropolitan Statistical Area (MSA) / Consolidated Metropolitan Statistical Area (CMSA)	113	
385	CMSA / Primary Metropolitan Statistical Area (PMSA)	46	
500	Congressional District	211	

Note: The Census 2000 Supplementary Survey follows the decennial census convention of displaying the same geographic area under multiple summary levels. For example, Bronx, New York is shown under the following summary levels:

060 - County subdivision (MCD)	Bronx borough
050 - County	Bronx County
155 - Place-County	New York city, Bronx County pt.

GEOGRAPHY	←
Anne Arundel County, MD	
Baltimore County, MD	
Baltimore city, Baltimore city pt., MD	
Baltimore city, MD	
Baltimore city, MD	
Calvert County, MD	⊞
MD Congressional District 2	
MD Congressional District 3	
MD Congressional District 4	
MD Congressional District 7	
MD Congressional District 8	
Montgomery County, MD	
Prince George's County, MD	

## Geographic Areas for Which Census 2000 Supplementary Survey Data Are Available

<u>State</u>	<u>Name</u>	<u>Summary Level</u>
ALABAMA	Birmingham, AL MSA	380 - MSA/CMSA
	Huntsville, AL MSA	380 - MSA/CMSA
	Jefferson County	050 - County
	Madison County	050 - County
	Mobile County	050 - County
	Mobile, AL MSA	380 - MSA/CMSA
	Montgomery, AL MSA	380 - MSA/CMSA
ALASKA	AK Congressional District (at Large)	500 - Congressional District
	Anchorage Municipality	050 - County
	Anchorage municipality	160 - Place
	Anchorage municipality, Anchorage Municipality pt.	155 - Place-County
	Anchorage, AK MSA	380 - MSA/CMSA
ARIZONA	AZ Congressional District 1	500 - Congressional District
	AZ Congressional District 4	500 - Congressional District
	Maricopa County	050 - County
	Mesa city	160 - Place
	Mesa city, Maricopa County pt.	155 - Place-County
	Phoenix city	160 - Place
	Phoenix city, Maricopa County pt.	155 - Place-County
	Pima County <sup>ACS</sup>	050 - County
	Tucson city <sup>ACS</sup>	160 - Place
	Tucson city, Pima County pt.	155 - Place-County
	Tucson, AZ MSA	380 - MSA/CMSA
ARKANSAS	Fayetteville--Springdale--Rogers, AR MSA	380 - MSA/CMSA
	Jefferson County <sup>ACS</sup>	050 - County
	Little Rock--North Little Rock, AR MSA	380 - MSA/CMSA
	Pulaski County	050 - County
CALIFORNIA	Alameda County	050 - County
	Anaheim city	160 - Place
	Anaheim city, Orange County pt.	155 - Place-County
	Bakersfield, CA MSA	380 - MSA/CMSA
	CA Congressional District 10	500 - Congressional District
	CA Congressional District 11	500 - Congressional District
	CA Congressional District 12	500 - Congressional District

**State****Name****Summary Level**

CA Congressional District 13	500 - Congressional District
CA Congressional District 14	500 - Congressional District
CA Congressional District 15	500 - Congressional District
CA Congressional District 16	500 - Congressional District
CA Congressional District 21	500 - Congressional District
CA Congressional District 22	500 - Congressional District
CA Congressional District 23	500 - Congressional District
CA Congressional District 24	500 - Congressional District
CA Congressional District 25	500 - Congressional District
CA Congressional District 26	500 - Congressional District
CA Congressional District 27	500 - Congressional District
CA Congressional District 28	500 - Congressional District
CA Congressional District 29	500 - Congressional District
CA Congressional District 30	500 - Congressional District
CA Congressional District 31	500 - Congressional District
CA Congressional District 32	500 - Congressional District
CA Congressional District 33	500 - Congressional District
CA Congressional District 34	500 - Congressional District
CA Congressional District 35	500 - Congressional District
CA Congressional District 36	500 - Congressional District
CA Congressional District 37	500 - Congressional District
CA Congressional District 38	500 - Congressional District
CA Congressional District 39	500 - Congressional District
CA Congressional District 41	500 - Congressional District
CA Congressional District 42	500 - Congressional District
CA Congressional District 43	500 - Congressional District
CA Congressional District 44	500 - Congressional District
CA Congressional District 45	500 - Congressional District
CA Congressional District 46	500 - Congressional District
CA Congressional District 47	500 - Congressional District
CA Congressional District 48	500 - Congressional District
CA Congressional District 49	500 - Congressional District
CA Congressional District 5	500 - Congressional District
CA Congressional District 50	500 - Congressional District
CA Congressional District 51	500 - Congressional District
CA Congressional District 6	500 - Congressional District
CA Congressional District 7	500 - Congressional District
CA Congressional District 8	500 - Congressional District
CA Congressional District 9	500 - Congressional District
Contra Costa County	050 - County
Fresno city	160 - Place

**State**

<b><u>Name</u></b>	<b><u>Summary Level</u></b>
Fresno city, Fresno County pt.	155 - Place-County
Fresno County	050 - County
Fresno, CA MSA	380 - MSA/CMSA
Kern County	050 - County
Long Beach city	160 - Place
Long Beach city, Los Angeles County pt.	155 - Place-County
Los Angeles city	160 - Place
Los Angeles city, Los Angeles County pt.	155 - Place-County
Los Angeles County	050 - County
Los Angeles--Long Beach, CA PMSA	385 - CMSA-PMSA
Los Angeles--Riverside--Orange County, CA CMSA	380 - MSA/CMSA
Modesto, CA MSA	380 - MSA/CMSA
Monterey County	050 - County
Oakland city	160 - Place
Oakland city, Alameda County pt.	155 - Place-County
Oakland, CA PMSA	385 - CMSA-PMSA
Orange County	050 - County
Orange County, CA PMSA	385 - CMSA-PMSA
Riverside city	160 - Place
Riverside city, Riverside County pt.	155 - Place-County
Riverside County	050 - County
Riverside--San Bernardino, CA PMSA	385 - CMSA-PMSA
Sacramento city	160 - Place
Sacramento city, Sacramento County pt.	155 - Place-County
Sacramento County	050 - County
Sacramento, CA PMSA	385 - CMSA-PMSA
Salinas, CA MSA	380 - MSA/CMSA
San Bernardino County	050 - County
San Diego city	160 - Place
San Diego city, San Diego County pt.	155 - Place-County
San Diego County	050 - County
San Diego, CA MSA	380 - MSA/CMSA
San Francisco city	160 - Place
San Francisco city, San Francisco County pt.	155 - Place-County
San Francisco County <sup>ACS</sup>	050 - County
San Francisco, CA PMSA	385 - CMSA-PMSA
San Francisco--Oakland--San Jose, CA CMSA	380 - MSA/CMSA
San Joaquin County	050 - County
San Jose city	160 - Place
San Jose city, Santa Clara County pt.	155 - Place-County
San Jose, CA PMSA	385 - CMSA-PMSA

<u>State</u>	<u>Name</u>	<u>Summary Level</u>
	San Mateo County	050 - County
	Santa Ana city	160 - Place
	Santa Ana city, Orange County pt.	155 - Place-County
	Santa Barbara County	050 - County
	Santa Barbara--Santa Maria--Lompoc, CA MSA	380 - MSA/CMSA
	Santa Clara County	050 - County
	Santa Rosa, CA PMSA	385 - CMSA-PMSA
	Solano County	050 - County
	Sonoma County	050 - County
	Stanislaus County	050 - County
	Stockton--Lodi, CA MSA	380 - MSA/CMSA
	Tulare County	050 - County
	Vallejo--Fairfield--Napa, CA PMSA	385 - CMSA-PMSA
	Ventura County	050 - County
	Ventura, CA PMSA	385 - CMSA-PMSA
	Visalia--Tulare--Porterville, CA MSA	380 - MSA/CMSA
COLORADO	Adams County	050 - County
	Arapahoe County	050 - County
	Aurora city	160 - Place
	Boulder County	050 - County
	Boulder--Longmont, CO PMSA	385 - CMSA-PMSA
	CO Congressional District 1	500 - Congressional District
	CO Congressional District 6	500 - Congressional District
	Colorado Springs city	160 - Place
	Colorado Springs city, El Paso County pt.	155 - Place-County
	Colorado Springs, CO MSA	380 - MSA/CMSA
	Denver city	160 - Place
	Denver city, Denver County pt.	155 - Place-County
	Denver County	050 - County
	Denver, CO PMSA	385 - CMSA-PMSA
	El Paso County	050 - County
	Jefferson County	050 - County
CONNECTICUT	Bridgeport, CT PMSA	385 - CMSA-PMSA
	CT Congressional District 1	500 - Congressional District
	CT Congressional District 2	500 - Congressional District
	CT Congressional District 3	500 - Congressional District
	CT Congressional District 4	500 - Congressional District
	CT Congressional District 5	500 - Congressional District
	CT Congressional District 6	500 - Congressional District

<u>State</u>	<u>Name</u>	<u>Summary Level</u>
	Fairfield County	050 - County
	Hartford County	050 - County
	Hartford, CT MSA	380 - MSA/CMSA
	New Haven County	050 - County
	New Haven--Meriden, CT PMSA	385 - CMSA-PMSA
	Stamford--Norwalk, CT PMSA	385 - CMSA-PMSA
DELAWARE	DE Congressional District (at Large)	500 - Congressional District
	New Castle County	050 - County
DISTRICT OF COLUMBIA	DC Delegate District (at Large)	500 - Congressional District
	District of Columbia	050 - County
	Washington city	160 - Place
	Washington city, District of Columbia pt.	155 - Place-County
FLORIDA	Brevard County	050 - County
	Broward County	050 - County
	Daytona Beach, FL MSA	380 - MSA/CMSA
	Duval County	050 - County
	Escambia County	050 - County
	FL Congressional District 10	500 - Congressional District
	FL Congressional District 11	500 - Congressional District
	FL Congressional District 17	500 - Congressional District
	FL Congressional District 18	500 - Congressional District
	FL Congressional District 19	500 - Congressional District
	FL Congressional District 21	500 - Congressional District
	FL Congressional District 22	500 - Congressional District
	FL Congressional District 4	500 - Congressional District
	FL Congressional District 7	500 - Congressional District
	FL Congressional District 8	500 - Congressional District
	FL Congressional District 9	500 - Congressional District
	Fort Lauderdale, FL PMSA	385 - CMSA-PMSA
	Fort Myers--Cape Coral, FL MSA	380 - MSA/CMSA
	Fort Pierce--Port St. Lucie, FL MSA	380 - MSA/CMSA
	Hillsborough County	050 - County
	Jacksonville city	160 - Place
	Jacksonville city, Duval County pt.	155 - Place-County
	Jacksonville, FL MSA	380 - MSA/CMSA
	Lakeland--Winter Haven, FL MSA	380 - MSA/CMSA
	Lee County	050 - County
	Manatee County	050 - County



<u>State</u>	<u>Name</u>	<u>Summary Level</u>
	Melbourne--Titusville--Palm Bay, FL MSA	380 - MSA/CMSA
	Miami city	160 - Place
	Miami city, Miami-Dade County pt.	155 - Place-County
	Miami, FL PMSA	385 - CMSA-PMSA
	Miami-Dade County	050 - County
	Miami--Fort Lauderdale, FL CMSA	380 - MSA/CMSA
	Orange County	050 - County
	Orlando, FL MSA	380 - MSA/CMSA
	Palm Beach County	050 - County
	Pasco County	050 - County
	Pensacola, FL MSA	380 - MSA/CMSA
	Pinellas County	050 - County
	Polk County	050 - County
	Sarasota County	050 - County
	Sarasota--Bradenton, FL MSA	380 - MSA/CMSA
	Seminole County	050 - County
	Tallahassee, FL MSA	380 - MSA/CMSA
	Tampa city	160 - Place
	Tampa city, Hillsborough County pt.	155 - Place-County
	Tampa--St. Petersburg--Clearwater, FL MSA	380 - MSA/CMSA
	Volusia County	050 - County
	West Palm Beach--Boca Raton, FL MSA	380 - MSA/CMSA
GEORGIA	Atlanta city	160 - Place
	Atlanta city, Fulton County pt.	155 - Place-County
	Atlanta, GA MSA	380 - MSA/CMSA
	Cobb County	050 - County
	DeKalb County	050 - County
	Fulton County	050 - County
	GA Congressional District 4	500 - Congressional District
	GA Congressional District 5	500 - Congressional District
	GA Congressional District 6	500 - Congressional District
	Gwinnett County	050 - County
	Macon, GA MSA	380 - MSA/CMSA
	Savannah, GA MSA	380 - MSA/CMSA
HAWAII	HI Congressional District 1	500 - Congressional District
	Honolulu CDP	160 - Place
	Honolulu CDP, Honolulu County pt.	155 - Place-County
	Honolulu County	050 - County
	Honolulu, HI MSA	380 - MSA/CMSA

<u>State</u>	<u>Name</u>	<u>Summary Level</u>
IDAHO	Ada County	050 - County
	Boise City, ID MSA	380 - MSA/CMSA
ILLINOIS	Chicago city	060 - MCD
	Chicago city	160 - Place
	Chicago city, Cook County pt.	155 - Place-County
	Chicago, IL PMSA	385 - CMSA-PMSA
	Cook County	050 - County
	DuPage County	050 - County
	IL Congressional District 1	500 - Congressional District
	IL Congressional District 10	500 - Congressional District
	IL Congressional District 13	500 - Congressional District
	IL Congressional District 2	500 - Congressional District
	IL Congressional District 3	500 - Congressional District
	IL Congressional District 4	500 - Congressional District
	IL Congressional District 5	500 - Congressional District
	IL Congressional District 6	500 - Congressional District
	IL Congressional District 7	500 - Congressional District
	IL Congressional District 8	500 - Congressional District
	IL Congressional District 9	500 - Congressional District
	Kane County	050 - County
	Lake County	050 - County
	Madison County	050 - County
	McHenry County	050 - County
	Peoria--Pekin, IL MSA	380 - MSA/CMSA
	Rockford, IL MSA	380 - MSA/CMSA
St. Clair County	050 - County	
Will County	050 - County	
Winnebago County	050 - County	
INDIANA	Allen County	050 - County
	Fort Wayne, IN MSA	380 - MSA/CMSA
	IN Congressional District 10	500 - Congressional District
	Indianapolis city (balance)	160 - Place
	Indianapolis city (balance), Marion County pt.	155 - Place-County
	Indianapolis, IN MSA	380 - MSA/CMSA
	Lake County	050 - County
	Marion County	050 - County
	South Bend, IN MSA	380 - MSA/CMSA
	St. Joseph County	050 - County

<u>State</u>	<u>Name</u>	<u>Summary Level</u>
IOWA	Des Moines, IA MSA Polk County	380 - MSA/CMSA 050 - County
KANSAS	Johnson County KS Congressional District 3 Sedgwick County Wichita city Wichita city Wichita city, Sedgwick County pt. Wichita, KS MSA	050 - County 500 - Congressional District 050 - County 060 - MCD 160 - Place 155 - Place-County 380 - MSA/CMSA
KENTUCKY	Jefferson County KY Congressional District 3 Lexington, KY MSA	050 - County 500 - Congressional District 380 - MSA/CMSA
LOUISIANA	Baton Rouge, LA MSA East Baton Rouge Parish Jefferson Parish LA Congressional District 2 Lafayette, LA MSA New Orleans city New Orleans city, Orleans Parish pt. New Orleans, LA MSA Orleans Parish Shreveport--Bossier City, LA MSA	380 - MSA/CMSA 050 - County 050 - County 500 - Congressional District 380 - MSA/CMSA 160 - Place 155 - Place-County 380 - MSA/CMSA 050 - County 380 - MSA/CMSA
MAINE	Cumberland County ME Congressional District 1 ME Congressional District 2	050 - County 500 - Congressional District 500 - Congressional District
MARYLAND	Anne Arundel County Baltimore city Baltimore city Baltimore city, Baltimore city pt. Baltimore County MD Congressional District 2 MD Congressional District 3 MD Congressional District 4 MD Congressional District 7 MD Congressional District 8	050 - County 050 - County 160 - Place 155 - Place-County 050 - County 500 - Congressional District 500 - Congressional District 500 - Congressional District 500 - Congressional District 500 - Congressional District

<u>State</u>	<u>Name</u>	<u>Summary Level</u>
	Montgomery County	050 - County
	Prince George's County	050 - County
MASSACHUSETTS	Boston city	060 - MCD
	Boston city	160 - Place
	Boston city, Suffolk County pt.	155 - Place-County
	Bristol County	050 - County
	Essex County	050 - County
	Hampden County	050 - County
	MA Congressional District 1	500 - Congressional District
	MA Congressional District 10	500 - Congressional District
	MA Congressional District 2	500 - Congressional District
	MA Congressional District 3	500 - Congressional District
	MA Congressional District 4	500 - Congressional District
	MA Congressional District 5	500 - Congressional District
	MA Congressional District 6	500 - Congressional District
	MA Congressional District 7	500 - Congressional District
	MA Congressional District 8	500 - Congressional District
	MA Congressional District 9	500 - Congressional District
	Middlesex County	050 - County
	Norfolk County	050 - County
	Plymouth County	050 - County
	Springfield, MA MSA	380 - MSA/CMSA
	Suffolk County	050 - County
	Worcester County	050 - County
MICHIGAN	Ann Arbor, MI PMSA	385 - CMSA-PMSA
	Detroit city	060 - MCD
	Detroit city	160 - Place
	Detroit city, Wayne County pt.	155 - Place-County
	Detroit, MI PMSA	385 - CMSA-PMSA
	Detroit--Ann Arbor--Flint, MI CMSA	380 - MSA/CMSA
	Flint, MI PMSA	385 - CMSA-PMSA
	Genesee County	050 - County
	Grand Rapids--Muskegon--Holland, MI MSA	380 - MSA/CMSA
	Ingham County	050 - County
	Kalamazoo--Battle Creek, MI MSA	380 - MSA/CMSA
	Kent County	050 - County
	Lansing--East Lansing, MI MSA	380 - MSA/CMSA
	Macomb County	050 - County
	MI Congressional District 10	500 - Congressional District

<u>State</u>	<u>Name</u>	<u>Summary Level</u>
	MI Congressional District 11	500 - Congressional District
	MI Congressional District 12	500 - Congressional District
	MI Congressional District 13	500 - Congressional District
	MI Congressional District 14	500 - Congressional District
	MI Congressional District 15	500 - Congressional District
	MI Congressional District 16	500 - Congressional District
	MI Congressional District 6	500 - Congressional District
	MI Congressional District 9	500 - Congressional District
	Oakland County	050 - County
	Saginaw--Bay City--Midland, MI MSA	380 - MSA/CMSA
	Washtenaw County	050 - County
	Wayne County	050 - County
MINNESOTA	Anoka County	050 - County
	Dakota County	050 - County
	Hennepin County	050 - County
	Minneapolis city	060 - MCD
	Minneapolis city	160 - Place
	Minneapolis city, Hennepin County pt.	155 - Place-County
	MN Congressional District 3	500 - Congressional District
	MN Congressional District 4	500 - Congressional District
	MN Congressional District 5	500 - Congressional District
	MN Congressional District 6	500 - Congressional District
	Ramsey County	050 - County
	St. Paul city	060 - MCD
	St. Paul city	160 - Place
	St. Paul city, Ramsey County pt.	155 - Place-County
MISSISSIPPI	Biloxi--Gulfport--Pascagoula, MS MSA	380 - MSA/CMSA
	Jackson, MS MSA	380 - MSA/CMSA
MISSOURI	Jackson County	050 - County
	Kansas City city	160 - Place
	Kansas City city, Jackson County pt.	155 - Place-County
	MO Congressional District 1	500 - Congressional District
	MO Congressional District 2	500 - Congressional District
	MO Congressional District 5	500 - Congressional District
	Springfield, MO MSA	380 - MSA/CMSA
	St. Charles County	050 - County
	St. Louis city	050 - County
	St. Louis city	060 - MCD

<u>State</u>	<u>Name</u>	<u>Summary Level</u>
	St. Louis city	160 - Place
	St. Louis city, St. Louis city pt.	155 - Place-County
	St. Louis County	050 - County
MONTANA	MT Congressional District (at Large)	500 - Congressional District
NEBRASKA	Douglas County	050 - County
	NE Congressional District 2	500 - Congressional District
	Omaha city	060 - MCD
	Omaha city	160 - Place
	Omaha city, Douglas County pt.	155 - Place-County
NEVADA	Clark County	050 - County
	Las Vegas city	160 - Place
	Las Vegas city, Clark County pt.	155 - Place-County
	NV Congressional District 1	500 - Congressional District
	Reno, NV MSA	380 - MSA/CMSA
	Washoe County	050 - County
NEW HAMPSHIRE	Hillsborough County	050 - County
	NH Congressional District 1	500 - Congressional District
	NH Congressional District 2	500 - Congressional District
	Rockingham County	050 - County
NEW JERSEY	Atlantic--Cape May, NJ PMSA	385 - CMSA-PMSA
	Bergen County	050 - County
	Bergen--Passaic, NJ PMSA	385 - CMSA-PMSA
	Burlington County	050 - County
	Camden County	050 - County
	Essex County	050 - County
	Hudson County	050 - County
	Jersey City, NJ PMSA	385 - CMSA-PMSA
	Mercer County	050 - County
	Middlesex County	050 - County
	Middlesex--Somerset--Hunterdon, NJ PMSA	385 - CMSA-PMSA
	Monmouth County	050 - County
	Monmouth--Ocean, NJ PMSA	385 - CMSA-PMSA
	Morris County	050 - County
	Newark city	060 - MCD
	Newark city	160 - Place
	Newark city, Essex County pt.	155 - Place-County

<u>State</u>	<u>Name</u>	<u>Summary Level</u>
	Newark, NJ PMSA	385 - CMSA-PMSA
	NJ Congressional District 1	500 - Congressional District
	NJ Congressional District 10	500 - Congressional District
	NJ Congressional District 11	500 - Congressional District
	NJ Congressional District 12	500 - Congressional District
	NJ Congressional District 13	500 - Congressional District
	NJ Congressional District 2	500 - Congressional District
	NJ Congressional District 3	500 - Congressional District
	NJ Congressional District 4	500 - Congressional District
	NJ Congressional District 5	500 - Congressional District
	NJ Congressional District 6	500 - Congressional District
	NJ Congressional District 7	500 - Congressional District
	NJ Congressional District 8	500 - Congressional District
	NJ Congressional District 9	500 - Congressional District
	Ocean County	050 - County
	Passaic County	050 - County
	Somerset County	050 - County
	Trenton, NJ PMSA	385 - CMSA-PMSA
	Union County	050 - County
NEW MEXICO	Albuquerque city	160 - Place
	Albuquerque city, Bernalillo County pt.	155 - Place-County
	Bernalillo County	050 - County
NEW YORK	Albany County	050 - County
	Albany--Schenectady--Troy, NY MSA	380 - MSA/CMSA
	Bronx borough	060 - MCD
	Bronx County	050 - County
	Brookhaven town	060 - MCD
	Brooklyn borough	060 - MCD
	Buffalo city	060 - MCD
	Buffalo city	160 - Place
	Buffalo city, Erie County pt.	155 - Place-County
	Buffalo--Niagara Falls, NY MSA	380 - MSA/CMSA
	Dutchess County	050 - County
	Dutchess County, NY PMSA	385 - CMSA-PMSA
	Erie County	050 - County
	Hempstead town	060 - MCD
	Islip town	060 - MCD
	Kings County	050 - County
	Manhattan borough	060 - MCD

**State****Name****Summary Level**

Monroe County	050 - County
Nassau County	050 - County
Nassau--Suffolk, NY PMSA	385 - CMSA-PMSA
New York city	160 - Place
New York city, Bronx County pt.	155 - Place-County
New York city, Kings County pt.	155 - Place-County
New York city, New York County pt.	155 - Place-County
New York city, Queens County pt.	155 - Place-County
New York city, Richmond County pt.	155 - Place-County
New York County	050 - County
New York, NY PMSA	385 - CMSA-PMSA
NY Congressional District 1	500 - Congressional District
NY Congressional District 10	500 - Congressional District
NY Congressional District 11	500 - Congressional District
NY Congressional District 12	500 - Congressional District
NY Congressional District 13	500 - Congressional District
NY Congressional District 14	500 - Congressional District
NY Congressional District 15	500 - Congressional District
NY Congressional District 16	500 - Congressional District
NY Congressional District 17	500 - Congressional District
NY Congressional District 18	500 - Congressional District
NY Congressional District 19	500 - Congressional District
NY Congressional District 2	500 - Congressional District
NY Congressional District 21	500 - Congressional District
NY Congressional District 28	500 - Congressional District
NY Congressional District 29	500 - Congressional District
NY Congressional District 3	500 - Congressional District
NY Congressional District 30	500 - Congressional District
NY Congressional District 4	500 - Congressional District
NY Congressional District 5	500 - Congressional District
NY Congressional District 6	500 - Congressional District
NY Congressional District 7	500 - Congressional District
NY Congressional District 8	500 - Congressional District
NY Congressional District 9	500 - Congressional District
Onondaga County	050 - County
Orange County	050 - County
Oyster Bay town	060 - MCD
Queens borough	060 - MCD
Queens County	050 - County
Richmond County	050 - County
Rochester, NY MSA	380 - MSA/CMSA



<u>State</u>	<u>Name</u>	<u>Summary Level</u>
	Rockland County	050 - County
	Staten Island borough	060 - MCD
	Suffolk County	050 - County
	Syracuse, NY MSA	380 - MSA/CMSA
	Utica--Rome, NY MSA	380 - MSA/CMSA
	Westchester County	050 - County
NORTH CAROLINA	Charlotte city	160 - Place
	Charlotte city, Mecklenburg County pt.	155 - Place-County
	Cumberland County	050 - County
	Fayetteville, NC MSA	380 - MSA/CMSA
	Forsyth County	050 - County
	Greensboro--Winston-Salem--High Point, NC MSA	380 - MSA/CMSA
	Guilford County	050 - County
	Hickory--Morganton--Lenoir, NC MSA	380 - MSA/CMSA
	Mecklenburg County	050 - County
	Raleigh city	160 - Place
	Raleigh city, Wake County pt.	155 - Place-County
	Raleigh--Durham--Chapel Hill, NC MSA	380 - MSA/CMSA
	Wake County	050 - County
NORTH DAKOTA	ND Congressional District (at Large)	500 - Congressional District
OHIO	Akron, OH PMSA	385 - CMSA-PMSA
	Butler County	050 - County
	Canton--Massillon, OH MSA	380 - MSA/CMSA
	Cincinnati city	060 - MCD
	Cincinnati city	160 - Place
	Cincinnati city, Hamilton County pt.	155 - Place-County
	Cleveland city	060 - MCD
	Cleveland city	160 - Place
	Cleveland city, Cuyahoga County pt.	155 - Place-County
	Cleveland--Akron, OH CMSA	380 - MSA/CMSA
	Cleveland--Lorain--Elyria, OH PMSA	385 - CMSA-PMSA
	Columbus city	060 - MCD
	Columbus city	160 - Place
	Columbus city, Franklin County pt.	155 - Place-County
	Cuyahoga County	050 - County
	Dayton--Springfield, OH MSA	380 - MSA/CMSA
	Franklin County	050 - County
	Hamilton County	050 - County

<u>State</u>	<u>Name</u>	<u>Summary Level</u>
	Hamilton--Middletown, OH PMSA	385 - CMSA-PMSA
	Lorain County	050 - County
	Lucas County	050 - County
	Mahoning County	050 - County
	Montgomery County	050 - County
	OH Congressional District 1	500 - Congressional District
	OH Congressional District 10	500 - Congressional District
	OH Congressional District 11	500 - Congressional District
	OH Congressional District 12	500 - Congressional District
	OH Congressional District 13	500 - Congressional District
	OH Congressional District 14	500 - Congressional District
	OH Congressional District 17	500 - Congressional District
	OH Congressional District 19	500 - Congressional District
	OH Congressional District 2	500 - Congressional District
	OH Congressional District 3	500 - Congressional District
	Stark County	050 - County
	Summit County	050 - County
	Toledo city	060 - MCD
	Toledo city	160 - Place
	Toledo city, Lucas County pt.	155 - Place-County
	Toledo, OH MSA	380 - MSA/CMSA
	Youngstown--Warren, OH MSA	380 - MSA/CMSA
OKLAHOMA	OK Congressional District 1	500 - Congressional District
	Oklahoma City city	160 - Place
	Oklahoma City city, Oklahoma County pt.	155 - Place-County
	Oklahoma City, OK MSA	380 - MSA/CMSA
	Oklahoma County	050 - County
	Tulsa city	160 - Place
	Tulsa city, Tulsa County pt.	155 - Place-County
	Tulsa County	050 - County
	Tulsa, OK MSA	380 - MSA/CMSA
OREGON	Clackamas County	050 - County
	Eugene--Springfield, OR MSA	380 - MSA/CMSA
	Lane County	050 - County
	Marion County	050 - County
	Multnomah County	050 - County
	OR Congressional District 3	500 - Congressional District
	Portland city	160 - Place
	Portland city, Multnomah County pt.	155 - Place-County

<u>State</u>	<u>Name</u>	<u>Summary Level</u>
	Salem, OR PMSA	385 - CMSA-PMSA
	Washington County	050 - County
PENNSLYVANIA	Allegheny County	050 - County
	Allentown--Bethlehem--Easton, PA MSA	380 - MSA/CMSA
	Berks County	050 - County
	Bucks County	050 - County
	Chester County	050 - County
	Delaware County	050 - County
	Erie County	050 - County
	Erie, PA MSA	380 - MSA/CMSA
	Harrisburg--Lebanon--Carlisle, PA MSA	380 - MSA/CMSA
	Lancaster County	050 - County
	Lancaster, PA MSA	380 - MSA/CMSA
	Lehigh County	050 - County
	Luzerne County	050 - County
	Montgomery County	050 - County
	Northampton County	050 - County
	PA Congressional District 1	500 - Congressional District
	PA Congressional District 13	500 - Congressional District
	PA Congressional District 14	500 - Congressional District
	PA Congressional District 15	500 - Congressional District
	PA Congressional District 16	500 - Congressional District
	PA Congressional District 17	500 - Congressional District
	PA Congressional District 18	500 - Congressional District
	PA Congressional District 2	500 - Congressional District
	PA Congressional District 3	500 - Congressional District
	PA Congressional District 7	500 - Congressional District
	PA Congressional District 8	500 - Congressional District
	Philadelphia city	060 - MCD
	Philadelphia city	160 - Place
	Philadelphia city, Philadelphia County pt.	155 - Place-County
	Philadelphia County	050 - County
	Pittsburgh city	060 - MCD
	Pittsburgh city	160 - Place
	Pittsburgh city, Allegheny County pt.	155 - Place-County
	Pittsburgh, PA MSA	380 - MSA/CMSA
	Reading, PA MSA	380 - MSA/CMSA
	Scranton--Wilkes-Barre--Hazleton, PA MSA	380 - MSA/CMSA
	Westmoreland County	050 - County
	York County	050 - County

<u>State</u>	<u>Name</u>	<u>Summary Level</u>
	York, PA MSA	380 - MSA/CMSA
RHODE ISLAND	Providence County	050 - County
	RI Congressional District 1	500 - Congressional District
	RI Congressional District 2	500 - Congressional District
SOUTH CAROLINA	Charleston County	050 - County
	Charleston--North Charleston, SC MSA	380 - MSA/CMSA
	Columbia, SC MSA	380 - MSA/CMSA
	Greenville County	050 - County
	Greenville--Spartanburg--Anderson, SC MSA	380 - MSA/CMSA
	Richland County	050 - County
SOUTH DAKOTA	SD Congressional District (at Large)	500 - Congressional District
TENNESSEE	Davidson County	050 - County
	Hamilton County	050 - County
	Knox County	050 - County
	Knoxville, TN MSA	380 - MSA/CMSA
	Memphis city	160 - Place
	Memphis city, Shelby County pt.	155 - Place-County
	Nashville, TN MSA	380 - MSA/CMSA
	Nashville-Davidson (balance)	160 - Place
	Nashville-Davidson (balance), Davidson County pt.	155 - Place-County
	Shelby County	050 - County
	TN Congressional District 5	500 - Congressional District
	TN Congressional District 9	500 - Congressional District
TEXAS	Arlington city	160 - Place
	Arlington city, Tarrant County pt.	155 - Place-County
	Austin city	160 - Place
	Austin city, Travis County pt.	155 - Place-County
	Austin--San Marcos, TX MSA	380 - MSA/CMSA
	Beaumont--Port Arthur, TX MSA	380 - MSA/CMSA
	Bexar County	050 - County
	Brownsville--Harlingen--San Benito, TX MSA	380 - MSA/CMSA
	Cameron County	050 - County
	Collin County	050 - County
	Corpus Christi city, Nueces County pt.	155 - Place-County
	Corpus Christi, TX MSA	380 - MSA/CMSA
	Dallas city	160 - Place

**State****Name****Summary Level**

Dallas city, Dallas County pt.	155 - Place-County
Dallas County	050 - County
Dallas, TX PMSA	385 - CMSA-PMSA
Dallas--Fort Worth, TX CMSA	380 - MSA/CMSA
Denton County	050 - County
El Paso city	160 - Place
El Paso city, El Paso County pt.	155 - Place-County
El Paso County	050 - County
El Paso, TX MSA	380 - MSA/CMSA
Fort Bend County	050 - County
Fort Worth city	160 - Place
Fort Worth city, Tarrant County pt.	155 - Place-County
Fort Worth--Arlington, TX PMSA	385 - CMSA-PMSA
Harris County	050 - County
Hidalgo County	050 - County
Houston city	160 - Place
Houston city, Harris County pt.	155 - Place-County
Houston, TX PMSA	385 - CMSA-PMSA
Killeen--Temple, TX MSA	380 - MSA/CMSA
McAllen--Edinburg--Mission, TX MSA	380 - MSA/CMSA
Montgomery County	050 - County
Nueces County	050 - County
San Antonio city	160 - Place
San Antonio city, Bexar County pt.	155 - Place-County
San Antonio, TX MSA	380 - MSA/CMSA
Tarrant County	050 - County
Travis County	050 - County
TX Congressional District 10	500 - Congressional District
TX Congressional District 12	500 - Congressional District
TX Congressional District 16	500 - Congressional District
TX Congressional District 18	500 - Congressional District
TX Congressional District 20	500 - Congressional District
TX Congressional District 25	500 - Congressional District
TX Congressional District 26	500 - Congressional District
TX Congressional District 29	500 - Congressional District
TX Congressional District 3	500 - Congressional District
TX Congressional District 30	500 - Congressional District
TX Congressional District 6	500 - Congressional District
TX Congressional District 7	500 - Congressional District
TX Congressional District 9	500 - Congressional District

<u>State</u>	<u>Name</u>	<u>Summary Level</u>
UTAH	Provo--Orem, UT MSA	380 - MSA/CMSA
	Salt Lake City--Ogden, UT MSA	380 - MSA/CMSA
	Salt Lake County	050 - County
	UT Congressional District 2	500 - Congressional District
	Utah County	050 - County
VERMONT	VT Congressional District (at Large)	500 - Congressional District
VIRGINIA	Chesterfield County	050 - County
	Fairfax County	050 - County
	Henrico County	050 - County
	Prince William County	050 - County
	Richmond--Petersburg, VA MSA	380 - MSA/CMSA
	VA Congressional District 11	500 - Congressional District
	VA Congressional District 2	500 - Congressional District
	VA Congressional District 8	500 - Congressional District
	Virginia Beach city	050 - County
	Virginia Beach city	160 - Place
Virginia Beach city, Virginia Beach city pt.	155 - Place-County	
WASHINGTON	Clark County	050 - County
	King County	050 - County
	Pierce County	050 - County
	Seattle city	160 - Place
	Seattle city, King County pt.	155 - Place-County
	Seattle--Bellevue--Everett, WA PMSA	385 - CMSA-PMSA
	Snohomish County	050 - County
	Spokane County	050 - County
	Spokane, WA MSA	380 - MSA/CMSA
	Tacoma, WA PMSA	385 - CMSA-PMSA
	WA Congressional District 7	500 - Congressional District
	WA Congressional District 8	500 - Congressional District
WEST VIRGINIA		040 - State
WISCONSIN	Appleton--Oshkosh--Neenah, WI MSA	380 - MSA/CMSA
	Dane County	050 - County
	Madison, WI MSA	380 - MSA/CMSA
	Milwaukee city	060 - MCD
	Milwaukee city	160 - Place
	Milwaukee city, Milwaukee County pt.	155 - Place-County

<u>State</u>	<u>Name</u>	<u>Summary Level</u>
	Milwaukee County	050 - County
	Milwaukee--Waukesha, WI PMSA	385 - CMSA-PMSA
	Waukesha County	050 - County
	WI Congressional District 4	500 - Congressional District
	WI Congressional District 5	500 - Congressional District
WYOMING	WY Congressional District (at Large)	500 - Congressional District
Multi-state areas	Augusta--Aiken, GA--SC MSA	380 - MSA/CMSA
	Boston, MA--NH PMSA	385 - CMSA-PMSA
	Boston--Worcester--Lawrence, MA--NH--ME--CT CMSA	380 - MSA/CMSA
	Davenport--Moline--Rock Island, IA--IL MSA	380 - MSA/CMSA
	Johnson City--Kingsport--Bristol, TN--VA MSA	380 - MSA/CMSA
	Kansas City, MO--KS MSA	380 - MSA/CMSA
	Lawrence, MA--NH PMSA	385 - CMSA-PMSA
	Lowell, MA--NH PMSA	385 - CMSA-PMSA
	New London--Norwich, CT--RI MSA	380 - MSA/CMSA
	Philadelphia, PA--NJ PMSA	385 - CMSA-PMSA
	Providence--Fall River--Warwick, RI--MA MSA	380 - MSA/CMSA
	St. Louis, MO--IL MSA	380 - MSA/CMSA
	Worcester, MA--CT PMSA	385 - CMSA-PMSA

## Census 2000 Supplementary Survey Metropolitan Statistical Areas

Note: This list shows all current MSAs, CMSAs and PMSAs in the United States. The shaded rows indicate metropolitan areas which cannot be published from the Census 2000 Supplementary Survey.

MSA-CMSA code	PMSA code	MSA, CMSA, or PMSA Name	Published for C2SS
0040		Abilene, TX MSA	
0120		Albany, GA MSA	
0160		Albany--Schenectady--Troy, NY MSA	yes
0200		Albuquerque, NM MSA	
0220		Alexandria, LA MSA	
0240		Allentown--Bethlehem--Easton, PA MSA	yes
0280		Altoona, PA MSA	
0320		Amarillo, TX MSA	
0380		Anchorage, AK MSA	yes
0450		Anniston, AL MSA	
0460		Appleton--Oshkosh--Neenah, WI MSA	yes
0480		Asheville, NC MSA	
0500		Athens, GA MSA	
0520		Atlanta, GA MSA	yes
0580		Auburn--Opelika, AL MSA	
0600		Augusta--Aiken, GA--SC MSA	yes
0640		Austin--San Marcos, TX MSA	yes
0680		Bakersfield, CA MSA	yes
0730		Bangor, ME MSA	
0740		Barnstable--Yarmouth, MA MSA	
0760		Baton Rouge, LA MSA	yes
0840		Beaumont--Port Arthur, TX MSA	yes
0860		Bellingham, WA MSA	
0870		Benton Harbor, MI MSA	
0880		Billings, MT MSA	
0920		Biloxi--Gulfport--Pascagoula, MS MSA	yes
0960		Binghamton, NY MSA	
1000		Birmingham, AL MSA	yes
1010		Bismarck, ND MSA	
1020		Bloomington, IN MSA	



<b>MSA-CMSA code</b>	<b>PMSA code</b>	<b>MSA, CMSA, or PMSA Name</b>	<b>Published for C2SS</b>
1040		Bloomington--Normal, IL MSA	
1080		Boise City, ID MSA	yes
1122		Boston--Worcester--Lawrence, MA--NH--ME--CT CMSA	yes
1122	1120	Boston, MA--NH PMSA	yes
1122	1200	Brockton, MA PMSA	
1122	2600	Fitchburg--Leominster, MA PMSA	
1122	4160	Lawrence, MA--NH PMSA	yes
1122	4560	Lowell, MA--NH PMSA	yes
1122	4760	Manchester, NH PMSA	
1122	5350	Nashua, NH PMSA	
1122	5400	New Bedford, MA PMSA	
1122	6450	Portsmouth--Rochester, NH--ME PMSA	
1122	9240	Worcester, MA--CT PMSA	yes
1240		Brownsville--Harlingen--San Benito, TX MSA	yes
1260		Bryan--College Station, TX MSA	
1280		Buffalo--Niagara Falls, NY MSA	yes
1305		Burlington, VT MSA	
1320		Canton--Massillon, OH MSA	yes
1350		Casper, WY MSA	
1360		Cedar Rapids, IA MSA	
1400		Champaign--Urbana, IL MSA	
1440		Charleston--North Charleston, SC MSA	yes
1480		Charleston, WV MSA	
1520		Charlotte--Gastonia--Rock Hill, NC--SC MSA	
1540		Charlottesville, VA MSA	
1560		Chattanooga, TN--GA MSA	
1580		Cheyenne, WY MSA	
1602		Chicago--Gary--Kenosha, IL--IN--WI CMSA	
1602	1600	Chicago, IL PMSA	yes
1602	2960	Gary, IN PMSA	
1602	3740	Kankakee, IL PMSA	
1602	3800	Kenosha, WI PMSA	
1620		Chico--Paradise, CA MSA	
1642		Cincinnati--Hamilton, OH--KY--IN CMSA	

<b>MSA-CMSA code</b>	<b>PMSA code</b>	<b>MSA, CMSA, or PMSA Name</b>	<b>Published for C2SS</b>
1642	1640	Cincinnati, OH--KY--IN PMSA	
1642	3200	Hamilton--Middletown, OH PMSA	yes
1660		Clarksville--Hopkinsville, TN--KY MSA	
1692		Cleveland--Akron, OH CMSA	yes
1692	0080	Akron, OH PMSA	yes
1692	1680	Cleveland--Lorain--Elyria, OH PMSA	yes
1720		Colorado Springs, CO MSA	yes
1740		Columbia, MO MSA	
1760		Columbia, SC MSA	yes
1800		Columbus, GA--AL MSA	
1840		Columbus, OH MSA	
1880		Corpus Christi, TX MSA	yes
1890		Corvallis, OR MSA	
1900		Cumberland, MD--WV MSA	
1922		Dallas--Fort Worth, TX CMSA	yes
1922	1920	Dallas, TX PMSA	yes
1922	2800	Fort Worth--Arlington, TX PMSA	yes
1950		Danville, VA MSA	
1960		Davenport--Moline--Rock Island, IA--IL MSA	yes
2000		Dayton--Springfield, OH MSA	yes
2020		Daytona Beach, FL MSA	yes
2030		Decatur, AL MSA	
2040		Decatur, IL MSA	
2082		Denver--Boulder--Greeley, CO CMSA	
2082	1125	Boulder--Longmont, CO PMSA	yes
2082	2080	Denver, CO PMSA	yes
2082	3060	Greeley, CO PMSA	
2120		Des Moines, IA MSA	yes
2162		Detroit--Ann Arbor--Flint, MI CMSA	yes
2162	0440	Ann Arbor, MI PMSA	yes
2162	2160	Detroit, MI PMSA	yes
2162	2640	Flint, MI PMSA	yes
2180		Dothan, AL MSA	
2190		Dover, DE MSA	

<b>MSA-CMSA code</b>	<b>PMSA code</b>	<b>MSA, CMSA, or PMSA Name</b>	<b>Published for C2SS</b>
2200		Dubuque, IA MSA	
2240		Duluth--Superior, MN--WI MSA	
2290		Eau Claire, WI MSA	
2320		El Paso, TX MSA	yes
2330		Elkhart--Goshen, IN MSA	
2335		Elmira, NY MSA	
2340		Enid, OK MSA	
2360		Erie, PA MSA	yes
2400		Eugene--Springfield, OR MSA	yes
2440		Evansville--Henderson, IN--KY MSA	
2520		Fargo--Moorhead, ND--MN MSA	
2560		Fayetteville, NC MSA	yes
2580		Fayetteville--Springdale--Rogers, AR MSA	yes
2620		Flagstaff, AZ--UT MSA	
2650		Florence, AL MSA	
2655		Florence, SC MSA	
2670		Fort Collins--Loveland, CO MSA	
2700		Fort Myers--Cape Coral, FL MSA	yes
2710		Fort Pierce--Port St. Lucie, FL MSA	yes
2720		Fort Smith, AR--OK MSA	
2750		Fort Walton Beach, FL MSA	
2760		Fort Wayne, IN MSA	yes
2840		Fresno, CA MSA	yes
2880		Gadsden, AL MSA	
2900		Gainesville, FL MSA	
2975		Glens Falls, NY MSA	
2980		Goldsboro, NC MSA	
2985		Grand Forks, ND--MN MSA	
2995		Grand Junction, CO MSA	
3000		Grand Rapids--Muskegon--Holland, MI MSA	yes
3040		Great Falls, MT MSA	
3080		Green Bay, WI MSA	
3120		Greensboro--Winston-Salem--High Point, NC MSA	yes
3150		Greenville, NC MSA	

<b>MSA-CMSA code</b>	<b>PMSA code</b>	<b>MSA, CMSA, or PMSA Name</b>	<b>Published for C2SS</b>
3160		Greenville--Spartanburg--Anderson, SC MSA	yes
3240		Harrisburg--Lebanon--Carlisle, PA MSA	yes
3280		Hartford, CT MSA	yes
3285		Hattiesburg, MS MSA	
3290		Hickory--Morganton--Lenoir, NC MSA	yes
3320		Honolulu, HI MSA	yes
3350		Houma, LA MSA	
3362		Houston--Galveston--Brazoria, TX CMSA	
3362	1145	Brazoria, TX PMSA	
3362	2920	Galveston--Texas City, TX PMSA	
3362	3360	Houston, TX PMSA	yes
3400		Huntington--Ashland, WV--KY--OH MSA	
3440		Huntsville, AL MSA	yes
3480		Indianapolis, IN MSA	yes
3500		Iowa City, IA MSA	
3520		Jackson, MI MSA	
3560		Jackson, MS MSA	yes
3580		Jackson, TN MSA	
3600		Jacksonville, FL MSA	yes
3605		Jacksonville, NC MSA	
3610		Jamestown, NY MSA	
3620		Janesville--Beloit, WI MSA	
3660		Johnson City--Kingsport--Bristol, TN--VA MSA	yes
3680		Johnstown, PA MSA	
3700		Jonesboro, AR MSA	
3710		Joplin, MO MSA	
3720		Kalamazoo--Battle Creek, MI MSA	yes
3760		Kansas City, MO--KS MSA	yes
3810		Killeen--Temple, TX MSA	yes
3840		Knoxville, TN MSA	yes
3850		Kokomo, IN MSA	
3870		La Crosse, WI--MN MSA	
3880		Lafayette, LA MSA	yes
3920		Lafayette, IN MSA	

<b>MSA-CMSA code</b>	<b>PMSA code</b>	<b>MSA, CMSA, or PMSA Name</b>	<b>Published for C2SS</b>
3960		Lake Charles, LA MSA	
3980		Lakeland--Winter Haven, FL MSA	yes
4000		Lancaster, PA MSA	yes
4040		Lansing--East Lansing, MI MSA	yes
4080		Laredo, TX MSA	
4100		Las Cruces, NM MSA	
4120		Las Vegas, NV--AZ MSA	
4150		Lawrence, KS MSA	
4200		Lawton, OK MSA	
4240		Lewiston--Auburn, ME MSA	
4280		Lexington, KY MSA	yes
4320		Lima, OH MSA	
4360		Lincoln, NE MSA	
4400		Little Rock--North Little Rock, AR MSA	yes
4420		Longview--Marshall, TX MSA	
4472		Los Angeles--Riverside--Orange County, CA CMSA	yes
4472	4480	Los Angeles--Long Beach, CA PMSA	yes
4472	5945	Orange County, CA PMSA	yes
4472	6780	Riverside--San Bernardino, CA PMSA	yes
4472	8735	Ventura, CA PMSA	yes
4520		Louisville, KY--IN MSA	
4600		Lubbock, TX MSA	
4640		Lynchburg, VA MSA	
4680		Macon, GA MSA	yes
4720		Madison, WI MSA	yes
4800		Mansfield, OH MSA	
4880		McAllen--Edinburg--Mission, TX MSA	yes
4890		Medford--Ashland, OR MSA	
4900		Melbourne--Titusville--Palm Bay, FL MSA	yes
4920		Memphis, TN--AR--MS MSA	
4940		Merced, CA MSA	
4992		Miami--Fort Lauderdale, FL CMSA	yes
4992	2680	Fort Lauderdale, FL PMSA	yes
4992	5000	Miami, FL PMSA	yes

<b>MSA-CMSA code</b>	<b>PMSA code</b>	<b>MSA, CMSA, or PMSA Name</b>	<b>Published for C2SS</b>
5082	5080	Milwaukee--Waukesha, WI PMSA	yes
5082	6600	Racine, WI PMSA	
5120		Minneapolis--St. Paul, MN--WI MSA	
5140		Missoula, MT MSA	
5160		Mobile, AL MSA	yes
5170		Modesto, CA MSA	yes
5200		Monroe, LA MSA	
5240		Montgomery, AL MSA	yes
5280		Muncie, IN MSA	
5330		Myrtle Beach, SC MSA	
5345		Naples, FL MSA	
5360		Nashville, TN MSA	yes
5520		New London--Norwich, CT--RI MSA	yes
5560		New Orleans, LA MSA	yes
5602		New York--Northern New Jersey--Long Island, NY--NJ--CT--PA CMSA	
5602	0875	Bergen--Passaic, NJ PMSA	yes
5602	1160	Bridgeport, CT PMSA	yes
5602	1930	Danbury, CT PMSA	
5602	2281	Dutchess County, NY PMSA	yes
5602	3640	Jersey City, NJ PMSA	yes
5602	5015	Middlesex--Somerset--Hunterdon, NJ PMSA	yes
5602	5190	Monmouth--Ocean, NJ PMSA	yes
5602	5380	Nassau--Suffolk, NY PMSA	yes
5602	5480	New Haven--Meriden, CT PMSA	yes
5602	5600	New York, NY PMSA	yes
5602	5640	Newark, NJ PMSA	yes
5602	5660	Newburgh, NY--PA PMSA	
5602	8040	Stamford--Norwalk, CT PMSA	yes
5602	8480	Trenton, NJ PMSA	yes
5602	8880	Waterbury, CT PMSA	
5720		Norfolk--Virginia Beach--Newport News, VA--NC MSA	
5790		Ocala, FL MSA	
5800		Odessa--Midland, TX MSA	

<b>MSA-CMSA code</b>	<b>PMSA code</b>	<b>MSA, CMSA, or PMSA Name</b>	<b>Published for C2SS</b>
5880		Oklahoma City, OK MSA	yes
5920		Omaha, NE--IA MSA	
5960		Orlando, FL MSA	yes
5990		Owensboro, KY MSA	
6015		Panama City, FL MSA	
6020		Parkersburg--Marietta, WV--OH MSA	
6080		Pensacola, FL MSA	yes
6120		Peoria--Pekin, IL MSA	yes
6162		Philadelphia--Wilmington--Atlantic City, PA--NJ--DE--MD CMSA	
6162	0560	Atlantic--Cape May, NJ PMSA	yes
6162	6160	Philadelphia, PA--NJ PMSA	yes
6162	8760	Vineland--Millville--Bridgeton, NJ PMSA	
6162	9160	Wilmington--Newark, DE--MD PMSA	
6200		Phoenix--Mesa, AZ MSA	
6240		Pine Bluff, AR MSA	
6280		Pittsburgh, PA MSA	yes
6320		Pittsfield, MA MSA	
6340		Pocatello, ID MSA	
6400		Portland, ME MSA	
6442		Portland--Salem, OR--WA CMSA	
6442	6440	Portland--Vancouver, OR--WA PMSA	
6442	7080	Salem, OR PMSA	yes
6480		Providence--Fall River--Warwick, RI--MA MSA	yes
6520		Provo--Orem, UT MSA	yes
6560		Pueblo, CO MSA	
6580		Punta Gorda, FL MSA	
6640		Raleigh--Durham--Chapel Hill, NC MSA	yes
6660		Rapid City, SD MSA	
6680		Reading, PA MSA	yes
6690		Redding, CA MSA	
6720		Reno, NV MSA	yes
6740		Richland--Kennewick--Pasco, WA MSA	
6760		Richmond--Petersburg, VA MSA	yes
6800		Roanoke, VA MSA	

<b>MSA-CMSA code</b>	<b>PMSA code</b>	<b>MSA, CMSA, or PMSA Name</b>	<b>Published for C2SS</b>
6820		Rochester, MN MSA	
6840		Rochester, NY MSA	yes
6880		Rockford, IL MSA	yes
6895		Rocky Mount, NC MSA	
6922		Sacramento--Yolo, CA CMSA	
6922	6920	Sacramento, CA PMSA	yes
6922	9270	Yolo, CA PMSA	
6960		Saginaw--Bay City--Midland, MI MSA	yes
6980		St. Cloud, MN MSA	
7000		St. Joseph, MO MSA	
7040		St. Louis, MO--IL MSA	yes
7120		Salinas, CA MSA	yes
7160		Salt Lake City--Ogden, UT MSA	yes
7200		San Angelo, TX MSA	
7240		San Antonio, TX MSA	yes
7320		San Diego, CA MSA	yes
7362		San Francisco--Oakland--San Jose, CA CMSA	yes
7362	5775	Oakland, CA PMSA	yes
7362	7360	San Francisco, CA PMSA	yes
7362	7400	San Jose, CA PMSA	yes
7362	7485	Santa Cruz--Watsonville, CA PMSA	
7362	7500	Santa Rosa, CA PMSA	yes
7362	8720	Vallejo--Fairfield--Napa, CA PMSA	yes
7460		San Luis Obispo--Atascadero--Paso Robles, CA MSA	
7480		Santa Barbara--Santa Maria--Lompoc, CA MSA	yes
7490		Santa Fe, NM MSA	
7510		Sarasota--Bradenton, FL MSA	yes
7520		Savannah, GA MSA	yes
7560		Scranton--Wilkes-Barre--Hazleton, PA MSA	yes
7602		Seattle--Tacoma--Bremerton, WA CMSA	
7602	1150	Bremerton, WA PMSA	
7602	5910	Olympia, WA PMSA	
7602	7600	Seattle--Bellevue--Everett, WA PMSA	yes
7602	8200	Tacoma, WA PMSA	yes



<b>MSA-CMSA code</b>	<b>PMSA code</b>	<b>MSA, CMSA, or PMSA Name</b>	<b>Published for C2SS</b>
7610		Sharon, PA MSA	
7620		Sheboygan, WI MSA	
7640		Sherman--Denison, TX MSA	
7680		Shreveport--Bossier City, LA MSA	yes
7720		Sioux City, IA--NE MSA	
7760		Sioux Falls, SD MSA	
7800		South Bend, IN MSA	yes
7840		Spokane, WA MSA	yes
7880		Springfield, IL MSA	
7920		Springfield, MO MSA	yes
8000		Springfield, MA MSA	yes
8050		State College, PA MSA	
8080		Steubenville--Weirton, OH--WV MSA	
8120		Stockton--Lodi, CA MSA	yes
8140		Sumter, SC MSA	
8160		Syracuse, NY MSA	yes
8240		Tallahassee, FL MSA	yes
8280		Tampa--St. Petersburg--Clearwater, FL MSA	yes
8320		Terre Haute, IN MSA	
8360		Texarkana, TX--Texarkana, AR MSA	
8400		Toledo, OH MSA	yes
8440		Topeka, KS MSA	
8520		Tucson, AZ MSA	yes
8560		Tulsa, OK MSA	yes
8600		Tuscaloosa, AL MSA	
8640		Tyler, TX MSA	
8680		Utica--Rome, NY MSA	yes
8750		Victoria, TX MSA	
8780		Visalia--Tulare--Porterville, CA MSA	yes
8800		Waco, TX MSA	
8872		Washington--Baltimore, DC--MD--VA--WV CMSA	
8872	0720	Baltimore, MD PMSA	
8872	3180	Hagerstown, MD PMSA	
8872	8840	Washington, DC--MD--VA--WV PMSA	

<b>MSA-CMSA code</b>	<b>PMSA code</b>	<b>MSA, CMSA, or PMSA Name</b>	<b>Published for C2SS</b>
8920		Waterloo--Cedar Falls, IA MSA	
8940		Wausau, WI MSA	
8960		West Palm Beach--Boca Raton, FL MSA	yes
9000		Wheeling, WV--OH MSA	
9040		Wichita, KS MSA	yes
9080		Wichita Falls, TX MSA	
9140		Williamsport, PA MSA	
9200		Wilmington, NC MSA	
9260		Yakima, WA MSA	
9280		York, PA MSA	yes
9320		Youngstown--Warren, OH MSA	yes
9340		Yuba City, CA MSA	
9360		Yuma, AZ MSA	

## Equivalent Geographies in the Census 2000 Supplementary Survey

Many geographic areas appear in the Census 2000 Supplementary Survey under a variety of geographic summary levels. These “equivalent” geographies are grouped together in the list below.

<u>State</u>	<u>Name</u>	<u>Summary Level</u>
ALASKA	Anchorage Municipality	050 - County
	Anchorage municipality	160 - Place
	Anchorage municipality, Anchorage Municipality pt.	155 - Place-County
	Anchorage, AK MSA	380 - MSA/CMSA
ARIZONA	Mesa city	160 - Place
	Mesa city, Maricopa County pt.	155 - Place-County
	Phoenix city	160 - Place
	Phoenix city, Maricopa County pt.	155 - Place-County
	Pima County	050 - County
	Tucson, AZ MSA	380 - MSA/CMSA
	Tucson city	160 - Place
	Tucson city, Pima County pt.	155 - Place-County
CALIFORNIA	Anaheim city	160 - Place
	Anaheim city, Orange County pt.	155 - Place-County
	Fresno city	160 - Place
	Fresno city, Fresno County pt.	155 - Place-County
	Kern County	050 - County
	Bakersfield, CA MSA	380 - MSA/CMSA
	Long Beach city	160 - Place
	Long Beach city, Los Angeles County pt.	155 - Place-County
	Los Angeles County	050 - County
	Los Angeles--Long Beach, CA PMSA	385 - CMSA-PMSA
	Los Angeles city	160 - Place
	Los Angeles city, Los Angeles County pt.	155 - Place-County
	Monterey County	050 - County
Salinas, CA MSA	380 - MSA/CMSA	
Oakland city	160 - Place	
Oakland city, Alameda County pt.	155 - Place-County	
Orange County	050 - County	
Orange County, CA PMSA	385 - CMSA-PMSA	

<u>State</u>	<u>Name</u>	<u>Summary Level</u>
	Riverside city	160 - Place
	Riverside city, Riverside County pt.	155 - Place-County
	Sacramento city	160 - Place
	Sacramento city, Sacramento County pt.	155 - Place-County
	San Diego city	160 - Place
	San Diego city, San Diego County pt.	155 - Place-County
	San Diego County	050 - County
	San Diego, CA MSA	380 - MSA/CMSA
	San Joaquin County	050 - County
	Stockton--Lodi, CA MSA	380 - MSA/CMSA
	San Jose city	160 - Place
	San Jose city, Santa Clara County pt.	155 - Place-County
	San Francisco city	160 - Place
	San Francisco city, San Francisco County pt.	155 - Place-County
	San Francisco County	050 - County
	Santa Barbara County	050 - County
	Santa Barbara--Santa Maria--Lompoc, CA MSA	380 - MSA/CMSA
	Santa Clara County	050 - County
	San Jose, CA PMSA	385 - CMSA-PMSA
	Santa Ana city	160 - Place
	Santa Ana city, Orange County pt.	155 - Place-County
	Sonoma County	050 - County
	Santa Rosa, CA PMSA	385 - CMSA-PMSA
	Stanislaus County	050 - County
	Modesto, CA MSA	380 - MSA/CMSA
	Tulare County	050 - County
	Visalia--Tulare--Porterville, CA MSA	380 - MSA/CMSA
	Ventura County	050 - County
	Ventura, CA PMSA	385 - CMSA-PMSA
COLORADO	Boulder County	050 - County
	Boulder--Longmont, CO PMSA	385 - CMSA-PMSA
	Colorado Springs city	160 - Place
	Colorado Springs city, El Paso County pt.	155 - Place-County
	Denver city	160 - Place

<u>State</u>	<u>Name</u>	<u>Summary Level</u>
	Denver city, Denver County pt. Denver County	155 - Place-County 050 - County
	El Paso County Colorado Springs, CO MSA	050 - County 380 - MSA/CMSA
DISTRICT OF COLUMBIA	DC Delegate District (at Large) District of Columbia Washington city Washington city, District of Columbia pt.	500 - Cong. District 050 - County 160 - Place 155 - Place-County
FLORIDA	Brevard County Melbourne--Titusville--Palm Bay, FL MSA	050 - County 380 - MSA/CMSA
	Broward County Fort Lauderdale, FL PMSA	050 - County 385 - CMSA-PMSA
	Jacksonville city Jacksonville city, Duval County pt.	160 - Place 155 - Place-County
	Lee County Fort Myers--Cape Coral, FL MSA	050 - County 380 - MSA/CMSA
	Miami city Miami city, Miami-Dade County pt.	160 - Place 155 - Place-County
	Miami-Dade County Miami, FL PMSA	050 - County 385 - CMSA-PMSA
	Palm Beach County West Palm Beach--Boca Raton, FL MSA	050 - County 380 - MSA/CMSA
	Polk County Lakeland--Winter Haven, FL MSA	050 - County 380 - MSA/CMSA
	Tampa city Tampa city, Hillsborough County pt.	160 - Place 155 - Place-County
HAWAII	Honolulu CDP Honolulu CDP, Honolulu County pt.	160 - Place 155 - Place-County
ILLINOIS	Chicago city Chicago city Chicago city, Cook County pt.	060 - MCD 160 - Place 155 - Place-County
INDIANA	Indianapolis city (balance) Indianapolis city (balance), Marion County pt. St. Joseph County South Bend, IN MSA	160 - Place 155 - Place-County 050 - County 380 - MSA/CMSA

<u>State</u>	<u>Name</u>	<u>Summary Level</u>
KANSAS	Wichita city	060 - MCD
	Wichita city	160 - Place
	Wichita city, Sedgwick County pt.	155 - Place-County
LOUISIANA	New Orleans city	160 - Place
	New Orleans city, Orleans Parish pt.	155 - Place-County
	Orleans Parish	050 - County
MARYLAND	Baltimore city	050 - County
	Baltimore city	160 - Place
	Baltimore city, Baltimore city pt.	155 - Place-County
MASSACHUSETTS	Boston city	060 - MCD
	Boston city	160 - Place
	Boston city, Suffolk County pt.	155 - Place-County
MICHIGAN	Detroit city	060 - MCD
	Detroit city	160 - Place
	Detroit city, Wayne County pt.	155 - Place-County
	Genesee County	050 - County
	Flint, MI PMSA	385 - CMSA-PMSA
MINNESOTA	Minneapolis city	060 - MCD
	Minneapolis city	160 - Place
	Minneapolis city, Hennepin County pt.	155 - Place-County
	St. Paul city	060 - MCD
	St. Paul city	160 - Place
	St. Paul city, Ramsey County pt.	155 - Place-County
MISSOURI	St. Louis city	050 - County
	St. Louis city	060 - MCD
	St. Louis city	160 - Place
	St. Louis city, St. Louis city pt.	155 - Place-County
NEBRASKA	Omaha city	060 - MCD
	Omaha city	160 - Place
	Omaha city, Douglas County pt.	155 - Place-County
NEVADA	Las Vegas city	160 - Place
	Las Vegas city, Clark County pt.	155 - Place-County
	Washoe County	050 - County
	Reno, NV MSA	380 - MSA/CMSA
NEW JERSEY	Mercer County	050 - County

<u>State</u>	<u>Name</u>	<u>Summary Level</u>
	Trenton, NJ PMSA	385 - CMSA-PMSA
	Newark city	060 - MCD
	Newark city	160 - Place
	Newark city, Essex County pt.	155 - Place-County
NEW MEXICO	Albuquerque city	160 - Place
	Albuquerque city, Bernalillo County pt.	155 - Place-County
NEW YORK	Bronx borough	060 - MCD
	Bronx County	050 - County
	New York city, Bronx County pt.	155 - Place-County
	Brooklyn borough	060 - MCD
	Kings County	050 - County
	New York city, Kings County pt.	155 - Place-County
	Buffalo city	060 - MCD
	Buffalo city	160 - Place
	Buffalo city, Erie County pt.	155 - Place-County
	Dutchess County	050 - County
	Dutchess County, NY PMSA	385 - CMSA-PMSA
	Manhattan borough	060 - MCD
	New York city, New York County pt.	155 - Place-County
	New York County	050 - County
	New York city, Queens County pt.	155 - Place-County
	Queens borough	060 - MCD
	Queens County	050 - County
	New York city, Richmond County pt.	155 - Place-County
	Richmond County	050 - County
	Staten Island borough	060 - MCD
NORTH CAROLINA	Charlotte city	160 - Place
	Charlotte city, Mecklenburg County pt.	155 - Place-County
	Cumberland County	050 - County
	Fayetteville, NC MSA	380 - MSA/CMSA
	Raleigh city	160 - Place
	Raleigh city, Wake County pt.	155 - Place-County
OHIO	Butler County	050 - County
	Hamilton--Middletown, OH PMSA	385 - CMSA-PMSA
	Cincinnati city	060 - MCD
	Cincinnati city	160 - Place

<u>State</u>	<u>Name</u>	<u>Summary Level</u>
	Cincinnati city, Hamilton County pt.	155 - Place-County
	Cleveland city	060 - MCD
	Cleveland city	160 - Place
	Cleveland city, Cuyahoga County pt.	155 - Place-County
	Columbus city	060 - MCD
	Columbus city, Franklin County pt.	155 - Place-County
	Franklin County	050 - County
	Toledo city	060 - MCD
	Toledo city	160 - Place
	Toledo city, Lucas County pt.	155 - Place-County
OREGON	Lane County	050 - County
	Eugene--Springfield, OR MSA	380 - MSA/CMSA
PENNSYLVANIA	Berks County	050 - County
	Reading, PA MSA	380 - MSA/CMSA
	Erie County	050 - County
	Erie, PA MSA	380 - MSA/CMSA
	Lancaster County	050 - County
	Lancaster, PA MSA	380 - MSA/CMSA
	Philadelphia city	060 - MCD
	Philadelphia city	
	Philadelphia city, Philadelphia County pt.	
	Philadelphia County	
	Pittsburgh city	060 - MCD
	Pittsburgh city	160 - Place
	Pittsburgh city, Allegheny County pt.	155 - Place-County
	York County	050 - County
	York, PA MSA	380 - MSA/CMSA
TENNESSEE	Memphis city	160 - Place
	Memphis city, Shelby County pt.	155 - Place-County
	Nashville-Davidson (balance)	160 - Place
	Nashville-Davidson (balance), Davidson County pt.	155 - Place-County
TEXAS	Arlington city	160 - Place
	Arlington city, Tarrant County pt.	155 - Place-County
	Cameron County	050 - County
	Brownsville--Harlingen--San Benito, TX MSA	380 - MSA/CMSA



<u>State</u>	<u>Name</u>	<u>Summary Level</u>
	El Paso city	160 - Place
	El Paso city, El Paso County pt.	155 - Place-County
	El Paso County	050 - County
	El Paso, TX MSA	380 - MSA/CMSA
	Fort Worth city	160 - Place
	Fort Worth city, Tarrant County pt.	155 - Place-County
	Hidalgo County	050 - County
	McAllen--Edinburg--Mission, TX MSA	380 - MSA/CMSA
	San Antonio city	160 - Place
	San Antonio city, Bexar County pt.	155 - Place-County
UTAH	Utah County	050 - County
	Provo--Orem, UT MSA	380 - MSA/CMSA
VIRGINIA	Virginia Beach city	050 - County
	Virginia Beach city	160 - Place
	Virginia Beach city, Virginia Beach city pt.	155 - Place-County
WASHINGTON	Pierce County	050 - County
	Tacoma, WA PMSA	385 - CMSA-PMSA
	Seattle city	160 - Place
	Seattle city, King County pt.	155 - Place-County
	Spokane County	050 - County
	Spokane, WA MSA	380 - MSA/CMSA
WISCONSIN	Dane County	050 - County
	Madison, WI MSA	380 - MSA/CMSA
	Milwaukee city	060 - MCD
	Milwaukee city	160 - Place
	Milwaukee city, Milwaukee County pt.	155 - Place-County

## Geographic Areas Appearing in both the Census 2000 Supplementary Survey and the 2000 American Community Survey Data Products

<u>State</u>	<u>Name</u>	<u>Summary Level</u>
ARIZONA	Pima County Tucson city	050 - County 160 - Place
CALIFORNIA	San Francisco County Tulare County	050 - County 050 - County
FLORIDA	Broward County	050 - County
ILLINOIS	Lake County	050 - County
MASSACHUSETTS	Hampden County	050 - County
NEBRASKA	Douglas County Omaha city	050 - County 160 - Place
NEW YORK	Bronx County Rockland County	050 - County 050 - County
OHIO	Columbus city, Franklin County pt. Franklin County	155 - Place-County 050 - County
OREGON	Multnomah County Portland city, Multnomah County pt.	050 - County 155 - Place-County
TEXAS	Fort Bend County Harris County Houston city Houston city, Harris County pt.	050 - County 050 - County 160 - Place 155 - Place-County

## **Glossary of Geographic Terms**

**Congressional district** – An area established by State officials or the courts for the purpose of electing a person to the U.S. House of Representatives. Within each State, these areas must contain, as nearly as possible, an equal number of inhabitants. The number of Congressional districts in each State may change after each decennial census, and the boundaries may be changed more than once during a decade.

**Consolidated metropolitan statistical area (CMSA)** – A geographic entity defined by the Federal Office of Management and Budget (OMB) for use by Federal statistical agencies. An area becomes a CMSA if it meets the requirements to qualify as a metropolitan statistical area (MSA), has a population of 1,000,000 or more, if component parts are recognized as primary statistical metropolitan areas (PMSAs), and local opinion favors the designation. Whole counties are components of CMSAs outside of New England, where they are composed of cities and towns instead.

**County** – A type of governmental unit that is the primary legal subdivision of every State except Alaska and Louisiana; also, a type of functioning MCD found in American Samoa.

**County subdivision** – A legal or statistical division of a county recognized by the Census Bureau for data presentation.

**Metropolitan statistical area (MSA)** – A geographic entity, defined by the Federal OMB for use by Federal statistical agencies, based on the concept of a core area with a large population nucleus, plus adjacent communities having a high degree of economic and social integration with that core. Qualification of an MSA requires the presence of a city with 50,000 or more inhabitants, or the presence of a UA and a total population of at least 100,000 (75,000 in New England). The county or counties containing the largest city and surrounding densely settled territory are central counties of the MSA. Additional outlying counties qualify to be included in the MSA by meeting certain other criteria of metropolitan character, such as a specified minimum population density or percentage of the population that is urban. MSAs in New England are defined in terms of cities and towns, following rules concerning commuting and population density.

**Minor Civil Division (MCD)** – A type of governmental unit that is the primary legal subdivision of a county in 28 States, created to govern or administer an area rather than a specific population. The several types of MCDs are identified in terms such as town, township, and district, and include both functioning and nonfunctioning governmental units. Many MCDs represent local, general-purpose governmental units, which makes them required areas for presentation of decennial census data. *See also county subdivision.*

**Place** – A concentration of population either legally bounded as an incorporated place, or identified by the Census Bureau as a Census designated place.

Incorporated Place – All incorporated places recognized legally as in existence under the laws of their respective states as cities, boroughs, towns, and villages, with the following exceptions: the towns in the New England states, New York, and Wisconsin, and the boroughs in New York are recognized as minor civil divisions for census purposes; the boroughs in Alaska are county equivalents.

Census Designated Place (CDP) – A statistical entity, defined for each decennial census according to Census Bureau guidelines, comprising a densely settled concentration of population that is not within an incorporated place, but is locally identified by a name. CDPs are delineated cooperatively by state and local officials and the Census Bureau, following Census Bureau guidelines. These entities were called unincorporated places for the 1940 through 1970 censuses.

**Primary metropolitan statistical area (PMSA)** – A geographic entity defined by the Federal OMB for use by Federal statistical agencies. If an area meets the requirements to qualify as a metropolitan statistical area (MSA) and has a population of one million or more, two or more PMSAs may be defined within it if statistical criteria are met and local opinion is in favor. A PMSA consists of a large urbanized county, or a cluster of such counties (cities and towns in New England) that have substantial commuting interchange. When one or more PMSAs have been recognized, the balance of the original, larger area becomes an additional PMSA; the larger area of which they are components then is designated a consolidated metropolitan statistical area (CMSA).

**State** – A type of governmental unit that is the primary legal subdivision of the United States; a functioning county equivalent in Palau, where it also serves as a nonfunctioning MCD.

For more information about the Census Bureau's statistical areas, geographic concepts or terminology, please reference the Geographic Areas Reference Manual (<http://www.census.gov/geo/www/garm.html>), published by the U.S. Census Bureau.