



Drug Enforcement Administration

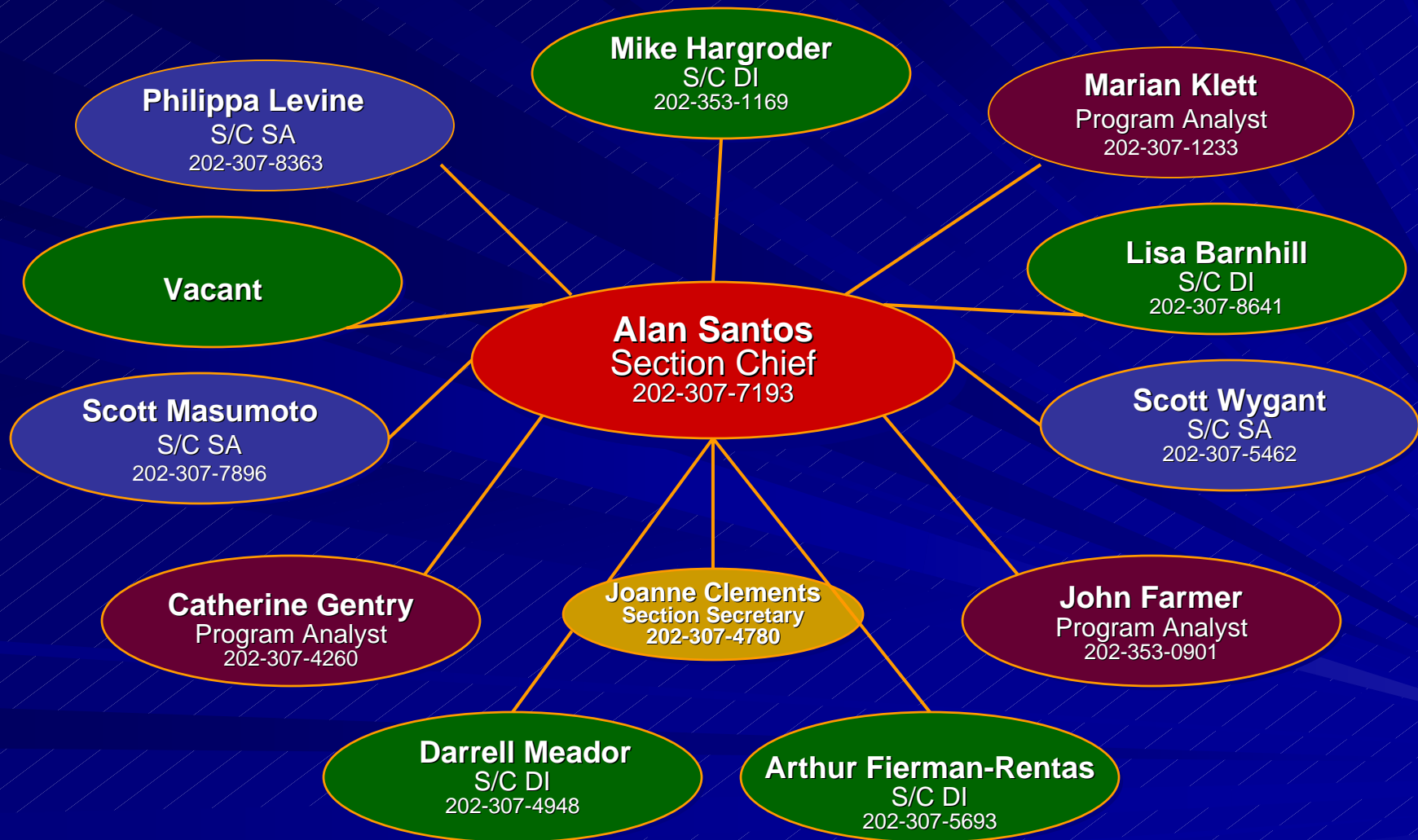


Dangerous Drugs and Chemicals Section

**16th National Conference
on Pharmaceutical & Chemical Diversion**

June 2007

Dangerous Drugs & Chemicals (OED)



DANGEROUS DRUGS AND CHEMICALS

MISSION

To reduce supply of illicit drugs and diverted chemicals by disrupting and dismantling the operations and financial infrastructures of major trafficking organizations.

DANGEROUS DRUGS AND CHEMICALS

DOMESTIC MISSION

To implement a system of controls over the domestic distribution, import and export of listed chemicals designed to detect and prosecute those registrants who divert chemicals to the illicit manufacture of controlled substances, and to enforce the criminal, regulatory and administrative provisions of federal chemical laws and regulations.

DANGEROUS DRUGS AND CHEMICALS

FUNCTIONS

- Approves/disapproves chemical registrations from pre-registration investigations
- Monitors, coordinates, and supports major precursor chemical investigations nationwide
- Approves/disapproves Letters of No Objection (LONOs) for Listed chemicals
- Monitors listed chemical diversion trends

DANGEROUS DRUGS AND CHEMICALS

FUNCTIONS

- Analyzes information, in coordination with other DEA elements, and prepares comprehensive reports on chemical distribution. Identifies chemicals that are diverted and specific registrants, classes of registrants, or other suppliers who may be sources of diversion.
- Coordinates and develops domestic chemical training for DEA and the chemical industry

DANGEROUS DRUGS AND CHEMICALS

FUNCTIONS

- Teach Basic D/I classes, advanced D/I classes, GS and DPM meetings, and makes presentations to industry and other groups.
- Coordinate and assist in the development of domestic chemical policy and legislation.
- Coordinate funding for field operations, clandestine lab cleanup

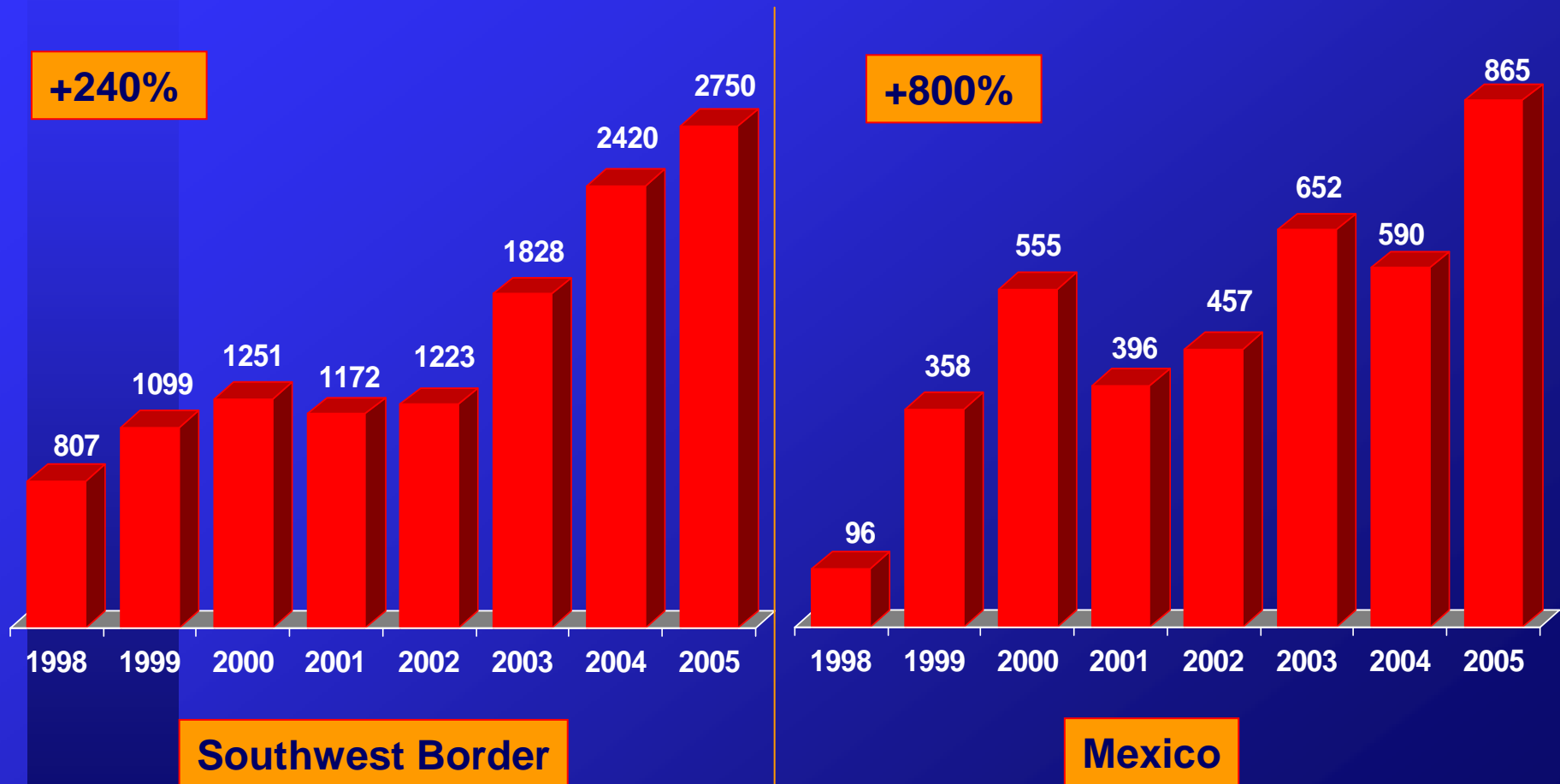
DANGEROUS DRUGS AND CHEMICALS

So,

Where are we now?

Foreign Source Methamphetamine: Seizures on the U.S. Southwest Border and in Mexico

Kilograms

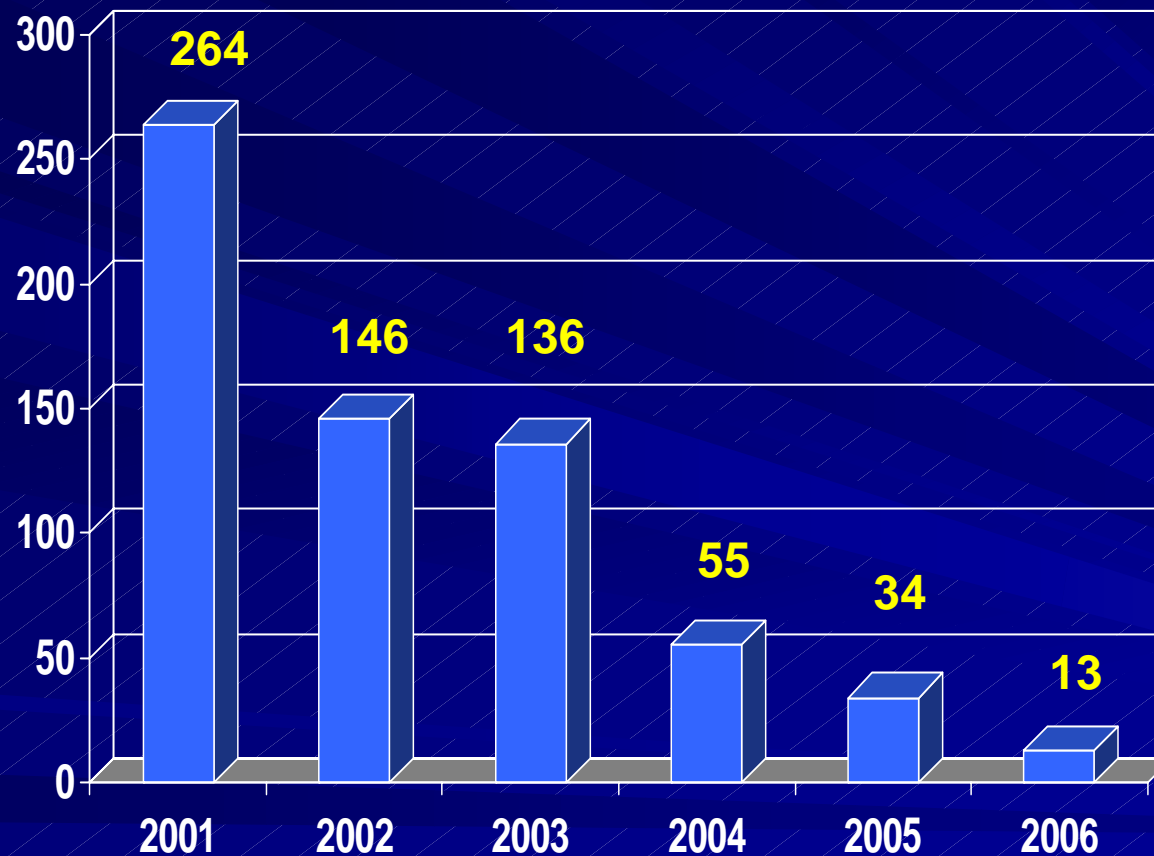


Source: El Paso Intelligence Center (EPIC), Southwest Border Seizure Statistics.

Source: International Narcotics Control Strategy Report (INCSR) / GOM Reporting. 1

Domestic Super Lab Seizures

(10 pounds per cycle or more)

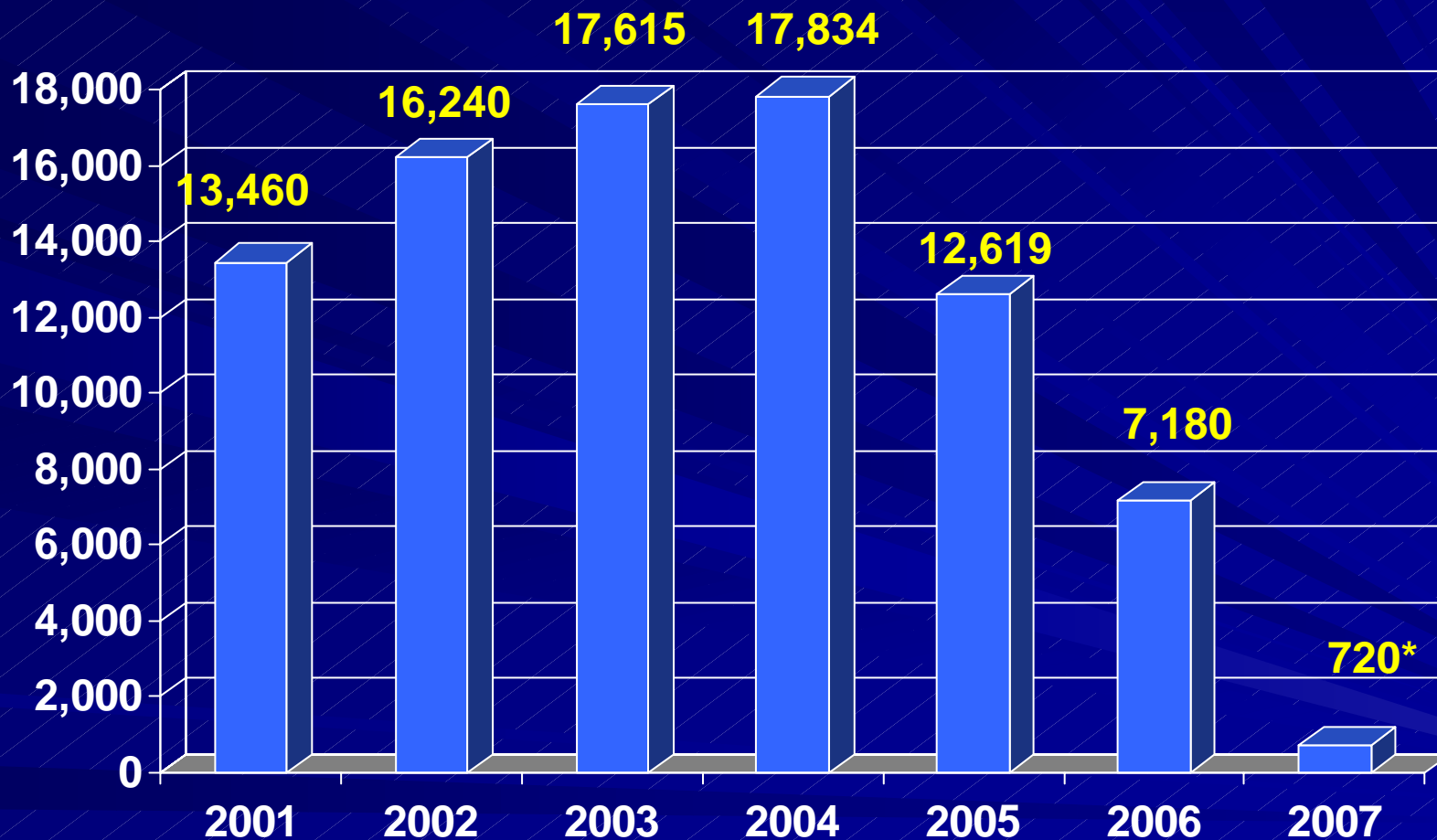


**91% reduction
in Super Labs
since 2002**

Data Source: Epic as of 04/25/07

Clan Lab Seizures

(All incidents)



* As of 04/25/07

Data Source: Epic Lab and SWB Seizure Data
From National Seizure System (NSS)

The Big “But”

**Because there’s always a
“however” in life...**

Quotas

- Import

- For importers of ephedrine, pseudoephedrine or phenylpropanolamine

- Manufacturing

- Only one company in the US manufactures pseudoephedrine and therefore will be the only one to get this type of quota

- Procurement

- For dosage form manufacturers or repackagers / relabelers

IMS National Study

- Outlet Sales-based
- Consumer Purchases-based
- Patient Data-based

- Pseudoephedrine

- 330-379 MT

- Ephedrine

- 3.5-4.5 M T

Two Import Requests

- These two requests equal the entire proposed quota amount allocated for the whole country for a whole year!
- 1kg = 40,000 tablets
- 3,000kgs = 120,000,000 tablets
(ONE HUNDRED TWENTY MILLION!)
- Would manufacture 1,896 kgs of methamphetamine



Drug Enforcement Administration



Lisa Barnhill
Staff Coordinator

202-307-8641

16th National Conference
on Pharmaceutical & Chemical Diversion

June 2007