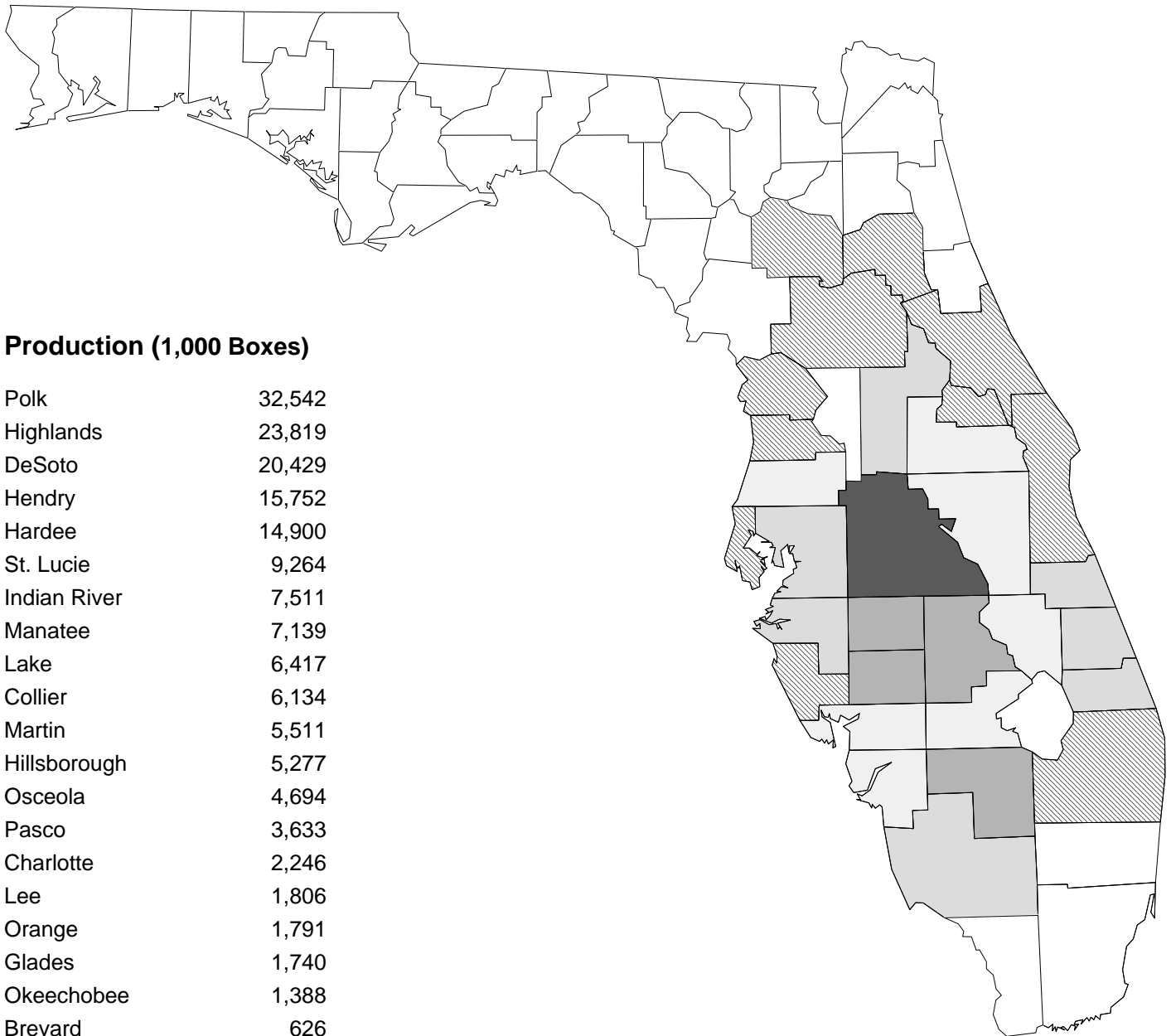


Citrus Summary 2005-06



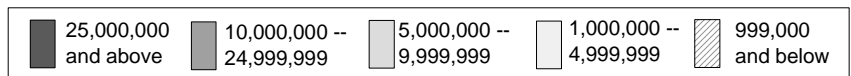
Florida Agricultural Statistics Service

CITRUS PRODUCTION BY COUNTY 2005-06



Production (1,000 Boxes)

Polk	32,542
Highlands	23,819
DeSoto	20,429
Hendry	15,752
Hardee	14,900
St. Lucie	9,264
Indian River	7,511
Manatee	7,139
Lake	6,417
Collier	6,134
Martin	5,511
Hillsborough	5,277
Osceola	4,694
Pasco	3,633
Charlotte	2,246
Lee	1,806
Orange	1,791
Glades	1,740
Okeechobee	1,388
Brevard	626
Sarasota	477
Marion	425
Hernando	337
Palm Beach	321
Volusia	285
Seminole	190
Other ^{1/}	146



Total 174,800

^{1/} Alachua, Citrus, Pinellas, and Putnam counties

Cover Photograph taken of a float for the 26th Annual Citrus Parade in Orlando, Florida – December 2006

FLORIDA AGRICULTURAL STATISTICS SERVICE

CITRUS SUMMARY 2005-06

FLORIDA DEPARTMENT OF AGRICULTURE AND CONSUMER SERVICES

Tallahassee, Florida
Charles H. Bronson, Commissioner

USDA/NASS/FLORIDA
FIELD OFFICE
Orlando, Florida

Benjamin F. Klugh, Jr, Director

DIVISION OF MARKETING
AND DEVELOPMENT
Tallahassee, Florida

Nelson L. Mongiovi, Director

UNITED STATES DEPARTMENT OF AGRICULTURE NATIONAL AGRICULTURAL STATISTICS SERVICE FLORIDA FIELD OFFICE

Mailing address: P.O. Box 530105, Orlando, Florida 32853-0105
Physical address: 1222 Woodward Street, Orlando, Florida 32803
Web address: <http://www.nass.usda.gov/fl>

Telephone: (407) 648-6013 *Facsimile:* (407) 648-6029
email: nass-fl@nass.usda.gov

Cooperating with

**U.S. Department of Agriculture, Agricultural Marketing Service
National Agricultural Statistics Service**

ACKNOWLEDGMENT

The acreage, production, utilization, monthly and season average price, and crop value statistics for Florida as shown in this summary and corresponding data for other citrus states are official estimates of the USDA, National Agricultural Statistics Service. Chilled and frozen pack statistics were compiled by the Florida Department of Citrus. Where data are from other sources, appropriate references appear.

Records of the Division of Fruit and Vegetables, Florida Department of Agriculture and Consumer Services, were used in preparing production and utilization estimates. The Citrus Administrative Committee assisted in assembling these data.

Many producers, shippers, processors, sales agencies, transportation firms, and others associated with the citrus industry voluntarily supplied basic data used to develop these statistics. Their contributions are sincerely appreciated.

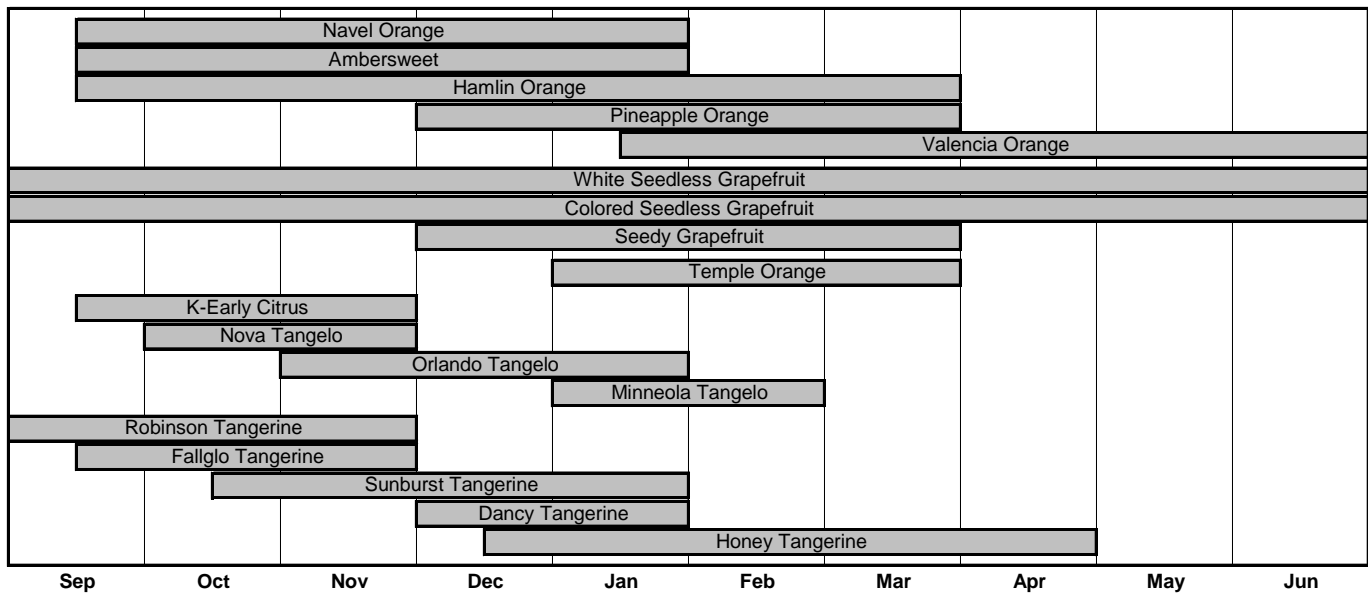
This report was assembled under the direction of James A. Ewing, Robert R. Terry, William C. Curtis, Candice T. Erick, and Rhonda L. Johnson of the USDA/NASS/Florida Field Office.

Published January 2007

CONTENTS

	Page		Page
Citrus Production: By county 2005-06...Inside Front Cover			
Florida Citrus Harvesting Season, and Tree Census ...	iv		
2005-06 Season Highlights			
Production, value, foreign exports, and frozen concentrate	1		
Pricing Florida Citrus	2		
2005-06 Weather Highlights	3		
Florida Citrus: Production since 1925-26 and History of Florida's Citrus Industry	4		
Citrus: Bearing acreage and production, by states			
Citrus	5		
Oranges	6		
Grapefruit	7		
Florida Citrus: Trees, acreage, yield, production, utilization, season average on-tree price, and value			
All round oranges	8		
Early, midseason, and Navel oranges.....	8		
Late (Valencia) oranges.....	9		
Navel oranges.....	9		
All Grapefruit	10		
Seedy Grapefruit	10		
White grapefruit	11		
Colored grapefruit	11		
Florida Grapefruit: Production by types, by areas	12		
Florida Grapefruit: Season average on-tree prices.....	12		
Florida Grapefruit: Bearing acreage and production, by variety chart.....	13		
Florida Citrus: Trees, acreage, yield, production, utilization, season average on-tree price, and value			
Tangelos	13		
Florida Tangerines: Bearing acreage, by variety chart...	14		
Florida Citrus: Trees, acreage, yield, production, utilization, season average on-tree price, and value			
All tangerines	14		
Early tangerines.....	15		
Honey tangerines.....	15		
Limes.....	16		
Temples	16		
Florida Citrus Products: Annual packs, and FCOJ yield	17		
Citrus Utilization: Season average on-tree price, and value by states			
All Oranges	18		
Temples	18		
Early, midseason, Navel and Valencia	19		
Grapefruit	20		
Tangerines	21		
Other citrus, limes, and lemons	22		
Florida Lemons: Acreage, production, season average on-tree price, and value, by types.....	23		
Florida Specialty Fruit: Bearing acreage, by variety chart.....	23		
Florida Citrus: Monthly and season average on-tree price			
Early, midseason, and Navel oranges	24		
Late (Valencia) oranges.....	24		
White grapefruit	25		
Colored grapefruit	25		
Tangelos	26		
Temples	26		
Early tangerines.....	27		
Honey tangerines.....	27		
Florida Citrus: Trees by counties and fruit types	28		
Florida Citrus: Production by counties and fruit types ...	29		
Florida Citrus: Acres by counties and fruit types.....	30		
Citrus: Bearing acreage by types and states.....	31		
Florida Citrus: Estimated boxes of fruit per tree, by types, age groups, and production areas			
Early, midseason, and Navel oranges	32		
Late (Valencia) oranges.....	33		
White seedless grapefruit	34		
Colored seedless grapefruit	35		
U.S. Exports: Fresh citrus, by seasons and fruit types	36		
U.S. Citrus: Exports of fresh citrus, by destinations, months and fruit types	37		
Florida Citrus: Certified exports of fresh Florida citrus, by weeks and fruit types	38		
Florida Citrus: Certified exports of fresh Florida citrus, by seasons and fruit types.....	39		
Florida Citrus: Exports of fresh Florida citrus, by destinations and fruit types.....	39		
Florida Citrus: Processed fruit utilization, by weeks			
Oranges, grapefruit, and Temples.....	40		
Tangelos, early tangerines, Honey tangerines	41		
Florida Citrus: Distribution of recorded utilization, by fruit types and months	42		
Citrus and Other Fruits: Per capita consumption of citrus, fresh fruit, and selected fresh juices	43		
Citrus Fruit: Production of citrus fruit, by selected countries, crop years, and fruit types.....	44		
World Citrus Production: By selected countries	45		
State Field Offices	46		
Data Sources	47		
U.S. Citrus: Production areas.....	48		
Commercial Citrus Acreage 2006Inside Back Cover			

FLORIDA CITRUS HARVESTING SEASON



TREE CENSUS

Each biennial commercial citrus tree inventory since January 1966 has been conducted using aerial photography. Aerial photos of 14,000 square miles covering virtually all of Florida's citrus are taken during a four-month period beginning the first of November. The same three-mile-wide flight lines established for the original survey are used in each succeeding flight.

This survey, the twenty-first in a series, began with current aerial photography. The inventory procedure started with a complete mapping and indexing of all citrus plantings onto scaled photo enlargements from the previous census. In 2005, the records were transferred to a GIS (Geographical Information System) for use with digital imagery. Aided by stereoscopic viewing, the current aerial photos were compared with photos from the previous census to detect grove changes, tree removals and new tree plantings. Each change observed by the photo interpreter was followed by a visit and ground check which usually resulted in a revised tree count for the grove. The ground checks are performed by experienced field personnel. Tree numbers are from actual tree counts of expansions from measured acreage. Acreages can be verified using the GIS. Block sizes are reduced as necessary for dead trees or empty spaces, as well as barnyards, turn rows, swale ditches, and irrigation ponds.

A record for each separate planting or block is maintained in the data system. A new record is created for each new planting, and records of plantings which no longer exist are removed. Typically, in non-freeze years, less than one-third of all blocks require a visit to complete the biennial census.

For this census period, nearly all blocks required a visit to update the records. The Tree Census Survey was completed in July 2006. Florida's citrus acreage which has been declining since 1996 is now at 621,373 acres. The net change is the greatest of any non-freeze period. All orange acreage, at 529,241, is the second lowest since beginning the biennial tree census survey in 1966. Grapefruit, now at 63,419, is the lowest since the survey began. Specialty fruit, which includes Temples, tangelos and tangerines, stands at 28,713 and is also the lowest.

FLORIDA CITRUS: Acres in commercial groves, from January 1966-2006

Census Year	Acres	Percent change from	
		Previous survey	1966 survey
1966	858,082	--	--
1968	931,249	8.5	8.5
1970	941,471	1.1	9.7
1972	878,019	-6.7	2.3
1974	864,098	-1.6	0.7
1976	852,369	-1.4	-0.7
1978	831,235	-2.5	-3.1
1980	845,283	1.7	-1.5
1982	847,856	0.3	-1.2
1984	761,365	-10.2	-11.3
1986	624,492	-18.0	-27.2
1988	697,929	11.8	-18.7
1990	732,767	5.0	-14.6
1992	791,290	8.0	-7.8
1994	853,742	7.9	-0.5
1996	857,687	0.5	0.0
1998	845,260	-1.4	-1.5
2000	832,275	-1.5	-3.0
2002	797,303	-4.2	-7.1
2004	748,555	-6.1	-12.8
2006	621,373	-17.0	-27.6

CITRUS BOX WEIGHTS: Approximate net weight by fruit type and states

State	Orange	Grapefruit	Tangerine	Lemon	Lime
<i>Pounds</i>					
FL	^{1/} 90	85	95	90	88
CA	75	67	75	76	--
TX	85	80	--	--	--
AZ	75	67	75	76	--

^{1/} Includes Temples and tangelos at 90 pounds.

2005-06 SEASON HIGHLIGHTS

PRODUCTION

U.S. citrus utilized production for the 2005-06 season totaled 11.6 million tons, virtually unchanged from the 2004-05 season but 35 percent lower than the record high production of 17.8 million tons for the 1997-98 season. Florida accounted for 68 percent of total U.S. citrus production, California totaled 28 percent, while Texas and Arizona produced the remaining 4 percent.

Production of **Florida** citrus in the 2005-06 season was 174.8 million boxes, down 40 percent from the 291.8 million boxes in the 2003-04 season. The primary reason for the reduced crop was fruit loss due to Hurricane Wilma. The all orange crop production, at 147.9 million boxes, was the lowest since the 139.8 million boxes in 1991-92. Valencia orange production was three percent higher than in 2004-05, while early-midseason-Navel oranges production was five percent lower. Navel production, at 3.8 million boxes, was 52 percent higher. Navels, primarily a fresh use crop, comprised 58 percent of the total early-midseason-Navel fresh shipments. Grapefruit utilized production in Florida, at 19.3 million boxes, was up 51 percent from the 2004-05 season. Otherwise, it was the lowest since the 1941-42 season's 19.2 million boxes. Increases in production of specialty fruit were recorded for all types except tangelos.

Utilized citrus production in California fell six percent from the 2004-05 season. Utilized production of citrus in Texas was down 18 percent, and Arizona's total citrus production was up 46 percent. A breakdown of production by variety can be found on pages 18-22.

AREA AND COUNTY PRODUCTION

Four of five Florida commercial citrus production areas recorded increases in 2005-06 from the prior season. The Indian River and Western areas were up the most at 63 percent and 47 percent respectively. The Southern area, the only area down, was 48 percent lower. Hurricane Wilma passed directly over the Southern citrus producing area causing a major reduction of the citrus crop.

Production increased in 19 of the 30 counties. Polk County led in total production with 32.5 million boxes, followed by Highlands (23.8 million boxes), Desoto (20.4 million boxes), Hendry (15.8 million boxes), and Hardee (14.9 million boxes). These top five counties produced 61 percent of the citrus crop.

Polk County produced the most oranges (27.7 million boxes) followed by Highlands (21.8 million boxes), and Desoto (20.0 million boxes). St. Lucie, at 5.7 million boxes of grapefruit, remained the top grapefruit producer followed by Indian River at

5.3 million boxes. Together the two counties accounted for 57 percent of the state's grapefruit crop.

The majority of the specialty crops (tangerines, Temples, and tangelos) were concentrated in the ridge counties of Polk, Lake, and Highlands. Polk led in production of tangelos and tangerines, while Highlands was the top producer of Temples.

VALUE

The value of the 2005-06 U.S. citrus crop was up 16 percent from the 2004-05 season, to \$2.68 billion (packinghouse-door equivalent). Total value of production was higher for all types of citrus, except grapefruit. Orange value of production increased 20 percent, while grapefruit value decreased 4 percent. Tangerine value of production increased 8 percent. Lemon value of production increased 28 percent. Tangelo and Temple values were up 43 percent and 22 percent, respectively.

Florida's \$1,043.3 million preliminary on-tree value of the 2005-06 citrus crop was up 38 percent from the 2004-05 season's revised value of \$754.2 million, and the highest since the 1999-00 season value of \$1,108.5 million. On-tree values were higher for all varieties of citrus except colored grapefruit and Honey tangerines. Price-per-box was higher for all varieties except white and colored grapefruit and Honey tangerines.

FOREIGN EXPORTS

Fresh fruit exports totaled 8.8 million 4/5 bushel cartons. Japan accounted for the majority of Florida grapefruit. Canada received the most of Florida orange and specialty fruit exports. More details are listed on page 39.

FROZEN CONCENTRATE

A total of 13.3 million gallons of FCOJ (Frozen Concentrated Orange Juice), and 2.7 million gallons of FCGJ (Frozen Concentrated Grapefruit Juice) were exported in the 2005-06 season.

The final FCOJ yield, reported by the Florida Department of Citrus, was higher than the previous season for all oranges (1.62745 gallons per box), lower for early-midseason fruit (1.52690), and higher for late oranges (1.75268). The final tangerine yield (FCTJ) was up (1.52520) and the final grapefruit yield (FCGJ) was down (1.21432).

The price per box was higher than the previous season for all varieties except colored grapefruit. The price per pound solids was higher for all varieties.

FLORIDA CITRUS: Value of sales on-tree, crop years 1996-97 through 2005-06

Crop year	Value	Crop year	Value
	<i>1,000 dollars</i>		<i>1,000 dollars</i>
1996-97	960,496	2001-02	966,803
1997-98	1,023,383	2002-03	787,378
1998-99	1,097,253	2003-04	891,500
1999-00	1,108,523	2004-05 ^{1/2/}	754,169
2000-01	862,031	2005-06 ^{2/3/}	1,043,293

^{1/} Revised.

^{2/} Excludes lemons.

^{3/} Preliminary.

PRICED FRUIT: 2005-06 Season average delivered-in price for fruit used in concentrate by variety

Variety	Price per box	Price per pound of solids
	<i>Dollars</i>	
All oranges	7.95	1.23
Early-midseason	6.50	1.09
Valencia	9.00	1.32
All grapefruit	9.15	2.06
White	10.12	2.34
Colored	8.49	1.87

SOURCE: Florida Department of Citrus

PRICING FLORIDA CITRUS

PRICES

All prices reported in this publication, except the concentrate prices in the table on page one, are on-tree prices representing the average price received by growers for their fruit. The term "on-tree" relates to fruit returns to the grower after the costs of picking, hauling, and packing have been removed. Prices are based on records of commercial fresh fruit sales and processed fruit returns.

Each season, beginning with the first month that at least three percent of a fruit type is harvested, monthly estimates are computed. Reports from fresh fruit sales organizations and from packers provide data for an average freight-on board (f.o.b.) price. Processors report an average spot and cash price for fruit delivered to their plants. From these values, an estimated charge for picking, hauling, and packing is deducted to arrive at an on-tree price. The anticipated box utilization for the month is used to combine the fresh and processing price to obtain an average price for all methods of sales.

At the season's end, monthly price averages are computed and weighted by boxes utilized, to provide the preliminary season average price. A year later, after most processed products are sold, cooperatives and firms with participation plans report prices of fruit they handled. These prices, combined with the spot and cash prices collected earlier, are

weighted together by varieties to determine the final processing price received by growers. From this price, charges for picking, hauling, and packing, as estimated by University of Florida economists, are deducted to arrive at the final on-tree price received by growers. The preliminary figures for the season are revised and released annually in late September.

PACKOUT RATES

Fresh prices shown in this publication are for "pure fresh" or 100% packout. Grading diverts a portion of the crop from fresh use. Returns at processing plants for this diverted fruit will generally be less than for field run fruit because of extra costs. In order to compare fresh prices shown in this publication to the individual grower's return it is necessary to calculate a derived price for that crop. Below is an example and a blank table for calculating fresh returns based on packout rates.

The example describes a delivery of 1,000 boxes with a packout rate of 60% (0.60 in decimal format). At this rate, 600 boxes (1,000 x 0.60) are shipped fresh at a price of \$9.50 per 1 3/5 bushel box equivalent. The remaining 400 boxes (1,000 x 0.40) are eliminations hauled to a processing facility and receive a price of \$1.20. The grower receives \$5,700.00 for the fresh portion and \$480.00 for the processed portion. Dividing the total amount of \$6,180.00 by the total of 1,000 boxes results in a derived price of \$6.18 per box.

SAMPLE CALCULATION OF GROWER'S RETURN

	Packout Rate		Prorated Boxes	On-tree Price	Amount Received	Derived Price
	Percent	Decimal				
Shipped Fresh	60	0.60	600	x Fresh	\$9.50 =	\$5,700.00
Eliminations	40	0.40	400	x Processed	\$1.20 =	\$480.00
Delivered to Packinghouse	100	1.00	1000		\$6,180.00	\$6.18

CALCULATE YOUR RETURN

	Packout Rate		Prorated Boxes	On-tree Price	Amount Received	Derived Price
	Percent	Decimal				
Shipped Fresh				x Fresh	=	
Eliminations				x Processed	=	
Delivered to Packinghouse						

2005-06 FLORIDA WEATHER HIGHLIGHTS, SELECTED AREAS, AND MONTHS

Weather conditions for **January, 2005** were typical with cool nights and moderate days. Slight frost was reported on one morning primarily in northern locations. In **February** several cold fronts passed through the state dropping overnight temperatures to the upper 30s and low 40s. Some coastal areas received over five inches of rain for the month, while interior areas had about two inches. Some early orange varieties showed slight amounts of open bloom, while later varieties showed buds just forming. **March** brought slightly higher amounts of rainfall than normal, with cool nighttime temperatures and moderate to warm days. **April** was mostly warm and pleasant for the month with some windier days during the third week. Some of the new pea size fruit dropped as the trees adjusted to the size or quantity they could carry for the next crop year.

May's weather varied with mostly moderate temperatures, and dry conditions. Late in the month, a low pressure system moved across the state bringing rainfall. This pattern extended into the first of **June**. Harvest of Valencias was diminished and sometimes halted due to extreme wet weather. Groves and trees were in good condition with golf ball size fruit on oranges for the next season and slightly larger sizes on grapefruit. Rainfall during **July** was about average. Trees in well cared for groves showed a good flush of new growth. New crop fruit progressed well with smaller than average sizes and heavy fruit sets. **August** was marked by relatively high temperatures, high humidity, and near average rainfall. Hurricane Katrina formed in the Atlantic in the third week of the month and moved across the extreme southern end of the state. Rainfall was limited to showers and impacted only the southern citrus growing areas. **September** continued the typical summer weather patterns of moderate to hot temperatures and high humidity. Tropical Storm Rita affected the state only marginally bringing waves of rainfall but no wind. Growers reported slight amounts of fruit splitting which is typical for this time of the season.

For the second season, a major hurricane affected the citrus production in Florida. Wilma, a category 3 hurricane, came late in the month of **October**, just as harvest was getting underway. The path it took was over the lower portion of the Gulf citrus production area. Hurricane force winds were reported 60 to 80 miles on each side of the storm. It moved quickly without losing strength and passed about 30 miles south of Lake Okeechobee. As it left the state over Palm Beach, the trailing eye wall

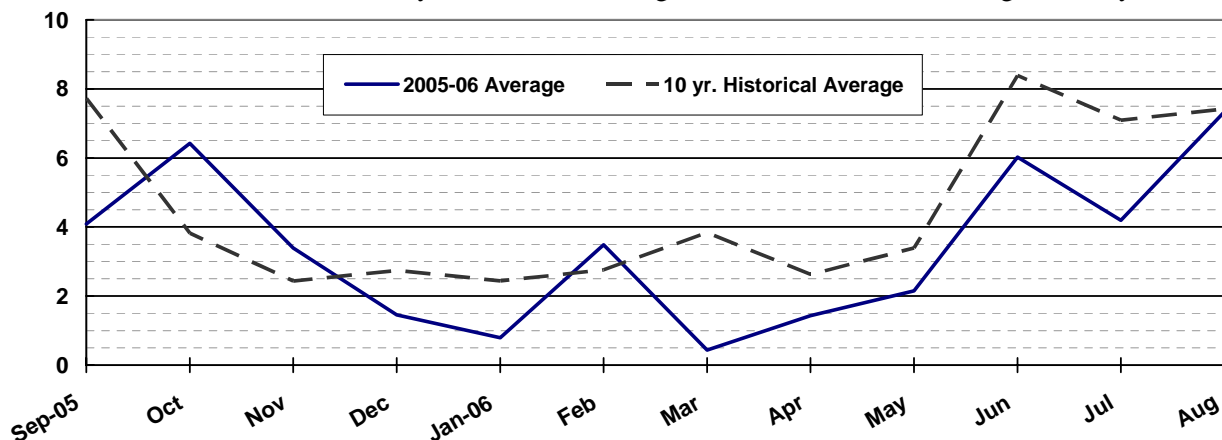
produced winds that exceeded 100 mph in citrus producing counties on the East Coast north to Indian River. Varieties which lost the most fruit were grapefruit, Navel and Hamlin oranges, and early tangerines.

Florida's citrus areas experienced cool weather over the month of **November**. Rainfall was at or below average levels all month with limited showers ahead of the cool fronts. **December** brought the end to the hurricane season with a record 14th named hurricane still wandering in the eastern Atlantic. Many trees in areas affected by Hurricane Wilma looked somewhat battered but were recovering. The month of **January, 2006** was very warm and dry in citrus producing areas. Monthly rain totals equaled two tenths of an inch in the north to just over one half of an inch in the western coastal citrus region. Growers in all areas used irrigation and began fertilizing and applying herbicides behind harvesting. The month of **February** was brought in by much needed rainfall. Cooler than normal seasonal temperatures were recorded during the month, with lows of 24 to 29 degrees in several central and southern counties. Growers were concerned that the cold weather could adversely affect the bloom cycle.

March and **April** turned out to be very dry in the entire citrus region, with less than two inches of rainfall recorded for some areas for the period. **May** was slightly wetter, averaging about two inches of rain across the state for the month. Daytime high temperatures were often in the low to mid 90's. **June** was mostly dry, with heavy concentrations of rainfall only on a few days. Overall temperatures were above average, with several days in the mid 90's in all areas. Trees completed the flush stage with limbs beginning to harden before the months end. Groves that were irrigated early in the season were in fair to good condition. By **July**, citrus producing counties were still showing deficit rainfall amounts for the year, with intermittent thunderstorms and passing showers during the month. Growers irrigated to keep trees and groves in good condition, looking for an upcoming profitable citrus season.

In the chart below, the 2005-06 monthly rainfall is compared to the 10-year historical average which includes data from two stations in each of the five citrus producing areas. The ten stations are: Avon Park (2 W), Arcadia, Clermont (7 S), Immokalee (3 NNW), Labelle, Orlando (WSO McCoy), Plant City, Stuart (1 N), Vero Beach (4 W), and Winter Haven.

FLORIDA PRECIPITATION: 10-year historical average rainfall and 2005-06 average monthly rainfall.



SOURCE: See Page 47 Data Sources, Item 10.

FLORIDA CITRUS: Production of all citrus since 1926-1927

Crop year	Type of fruit				Crop year	Type of fruit			
	Oranges	Grapefruit	Other	Total		Oranges	Grapefruit	Other	Total
	<i>1,000 boxes</i>					<i>1,000 boxes</i>			
1926-27	10,100	8,600	912	19,612	1966-67	139,500	43,600	11,895	194,995
1927-28	8,650	7,500	850	17,000	1967-68	100,500	32,900	10,880	144,280
1928-29	15,000	11,300	1,506	27,806	1968-69	129,700	39,900	12,470	182,070
1929-30	8,950	8,300	858	18,108	1969-70	137,700	37,400	13,915	189,015
1930-31	16,800	15,800	2,408	35,008	1970-71	142,300	42,900	14,450	199,650
1931-32	12,200	10,700	2,009	24,909	1971-72	137,000	47,000	16,480	200,480
1932-33	14,500	11,600	1,910	28,010	1972-73	169,700	45,400	15,450	230,550
1933-34	15,900	10,900	2,012	28,812	1973-74	165,800	48,100	16,350	230,250
1934-35	15,600	15,200	2,015	32,815	1974-75	173,300	44,600	17,830	235,730
1935-36	15,900	11,500	2,112	29,512	1975-76	181,200	49,100	19,180	249,480
1936-37	19,100	18,100	3,045	40,245	1976-77	186,800	51,500	16,200	254,500
1937-38	23,900	14,600	2,370	40,870	1977-78	167,800	51,400	16,270	235,470
1938-39	29,900	23,300	3,495	56,695	1978-79	164,000	50,000	16,190	230,190
1939-40	25,350	15,900	2,745	43,995	1979-80	206,700	54,800	22,050	283,550
1940-41	28,200	24,600	3,180	55,980	1980-81	172,400	50,300	15,880	238,580
1941-42	26,800	19,200	2,650	48,650	1981-82	125,800	48,100	15,310	189,210
1942-43	36,650	27,300	4,925	68,875	1982-83	139,600	39,400	14,600	193,600
1943-44	45,500	31,000	4,490	80,990	1983-84	116,700	40,900	11,945	169,545
1944-45	42,230	22,300	4,670	69,200	1984-85	103,900	44,000	11,005	158,905
1945-46	49,000	32,000	5,200	86,200	1985-86	119,200	46,750	10,065	176,015
1946-47	52,080	26,400	4,790	83,270	1986-87	119,700	49,800	12,030	181,530
1947-48	57,530	29,300	4,440	91,270	1987-88	138,000	53,850	12,250	204,100
1948-49	57,380	30,200	5,520	93,100	1988-89	146,600	54,750	12,500	213,850
1949-50	57,790	24,200	5,970	87,960	1989-90	110,200	35,700	8,285	154,185
1950-51	66,200	33,200	5,980	105,380	1990-91	151,600	45,100	8,960	205,660
1951-52	76,900	33,000	6,060	115,960	1991-92	139,800	42,400	9,615	191,815
1952-53	70,500	32,500	6,920	109,920	1992-93	186,600	55,150	9,790	251,540
1953-54	89,100	40,700	7,070	136,870	1993-94	174,400	51,050	10,310	235,760
1954-55	85,900	34,800	7,998	128,698	1994-95	205,500	55,700	9,820	271,020
1955-56	88,200	38,300	7,935	134,435	1995-96	203,300	52,350	9,725	265,375
1956-57	90,300	37,400	8,020	135,720	1996-97	226,200	55,800	13,315	295,315
1957-58	81,000	31,100	4,300	116,400	1997-98	244,000	49,550	10,900	304,450
1958-59	83,000	35,200	7,800	126,000	1998-99	186,000	47,050	10,115	243,165
1959-60	87,600	30,500	7,470	125,570	1999-00	233,000	53,400	12,030	298,430
1960-61	82,700	31,600	9,940	124,240	2000-01	223,300	46,000	9,505	278,805
1961-62	108,800	34,800	10,210	153,810	2001-02	230,000	46,700	10,565	287,265
1962-63	72,500	30,000	5,250	107,750	2002-03	203,000	38,700	9,305	251,005
1963-64	54,900	26,300	8,620	89,820	2003-04	242,000	40,900	8,900	291,800
1964-65	82,400	31,900	9,350	123,650	2004-05	149,800	12,800	6,650	169,250
1965-66	95,900	34,900	10,190	140,990	2005-06	147,900	19,300	7,600	174,800

HISTORY OF FLORIDA'S CITRUS INDUSTRY

The citrus tree is a native of the Orient. From there it was carried ever westward by man, to India, to the Mediterranean, and across the Atlantic. Citrus was brought to the Americas by Columbus. When he landed on November 22, 1493, he brought citrus seeds that were planted on the island of Hispaniola. The first seeds planted on the mainland of the Americas were brought by the expedition of Juan de Grijalva when he landed in Central America between July 12 and July 20, 1518. The exact date of the introduction of citrus trees into Florida is not known, but from a statement made by Pedro Medendez, dated April 2, 1579, it appears that then citrus fruits were grown in abundance around St. Augustine.

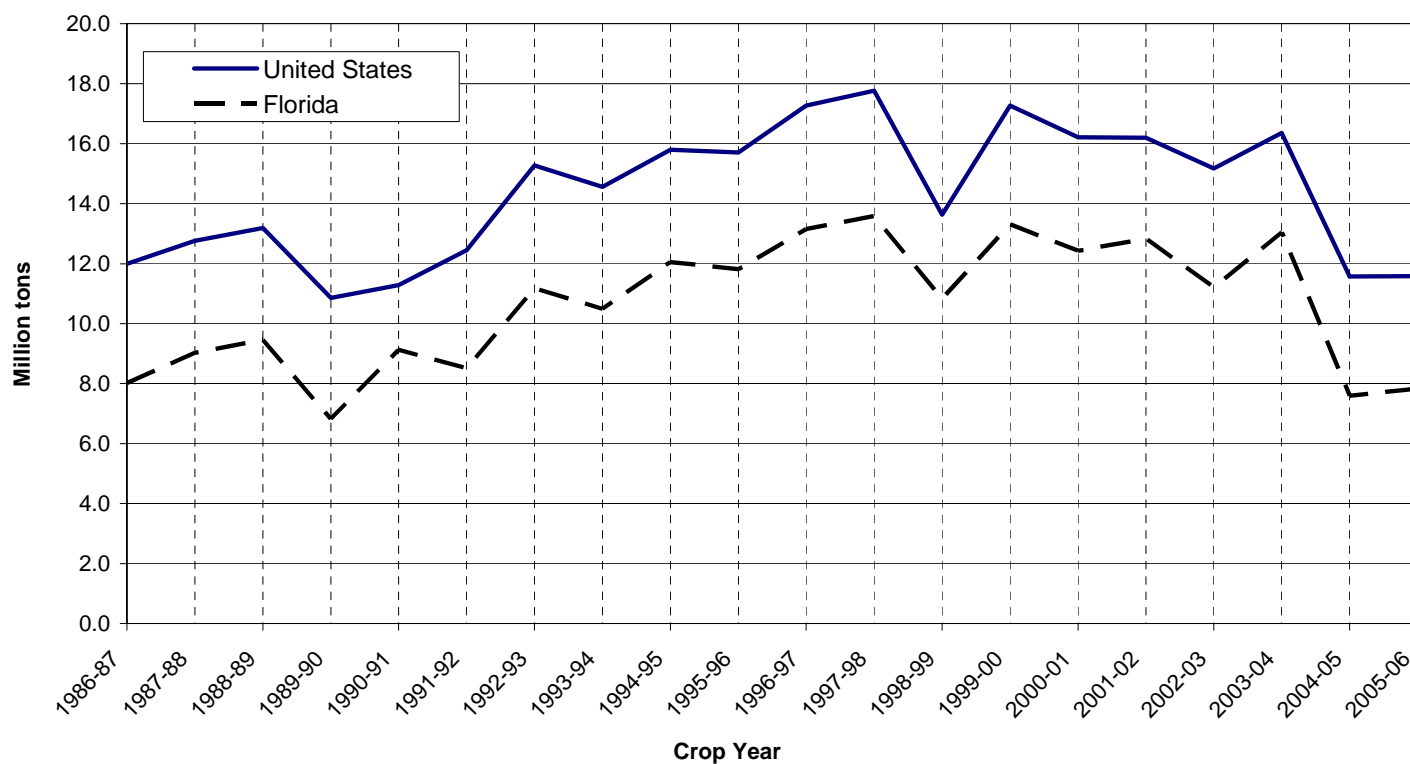
Early settlers in Florida some two centuries later found wild citrus trees scattered over the State. One of the oldest cultivated groves planted in Florida (Hume, 1926, p. 95) is thought to have been the Don Phillipe grove in Pinellas County, planted sometime between the years of 1809 and 1820. Nearly 1.5 million boxes were shipped in 1887-88, the first season on record. Citrus production in Florida had reached an all time high of more than 5 million boxes when the Great Freeze of 1894-95 almost totally wiped out the citrus industry. It was not until 1909-10 that this level was reached again. The highest production ever was reached in the 1997-1998 season, when Florida produced 304.5 million boxes.

**CITRUS: Bearing acreage and production, by states,
crop years 1986-87 through 2005-06**

Crop year	Florida		California		Texas		Arizona		United States	
	Bearing acreage	Production ^{1/}	Bearing acreage	Production	Bearing acreage	Production	Bearing acreage	Production	Bearing acreage	Production
	1,000	1,000	1,000	1,000	1,000	1,000	1,000	1,000	1,000	1,000
	acres	tons	acres	tons	acres	tons	acres	tons	acres	tons
1986-87	514.5	8,009	250.7	3,377	25.5	115	35.5	493	826.2	11,994
1987-88	519.5	9,020	250.7	3,235	27.1	213	35.6	293	832.9	12,761
1988-89	528.7	9,456	253.9	3,163	28.9	271	36.0	296	847.5	13,186
1989-90	534.6	6,823	249.4	3,649	31.7	131	36.1	257	851.8	10,860
1990-91	555.7	9,127	251.0	1,837	8.0	0	35.2	321	849.9	11,285
1991-92	583.6	8,510	254.5	3,522	11.0	4	37.0	416	886.1	12,452
1992-93	639.3	11,175	255.9	3,662	14.5	97	37.7	340	947.4	15,274
1993-94	665.8	10,484	256.5	3,569	18.2	144	37.6	364	978.1	14,561
1994-95	731.7	12,054	263.7	3,267	21.9	230	37.8	248	1,055.1	15,799
1995-96	773.5	11,815	270.0	3,342	25.5	222	34.2	333	1,103.2	15,712
1996-97	815.1	13,156	274.1	3,632	29.1	273	34.2	210	1,152.5	17,271
1997-98	785.9	13,583	274.5	3,744	32.6	256	32.3	187	1,125.3	17,770
1998-99	777.1	10,827	275.2	2,266	29.1	305	30.2	235	1,111.6	13,633
1999-00	762.4	13,305	269.2	3,457	29.1	308	29.2	206	1,089.9	17,276
2000-01	756.0	12,433	268.2	3,197	29.1	383	28.7	203	1,082.0	16,216
2001-02	727.6	12,824	269.5	2,907	28.3	310	28.5	153	1,053.9	16,194
2002-03	718.1	11,206	259.2	3,530	27.3	292	27.3	152	1,031.9	15,180
2003-04	679.0	13,045	252.0	2,855	27.3	298	27.0	162	985.3	16,360
2004-05	641.4	7,597	251.0	3,511	27.3	339	26.0	127	945.7	11,574
2005-06	576.4	7,832	250.5	3,290	27.3	277	23.5	185	877.7	11,584

^{1/} Does not include lemons. K-Early Citrus Fruit included from 1992-93 through 2001-02. Sunburst tangerines included beginning in 1989-90. Fallglo tangerines included beginning in 1993-94. Lime estimates discontinued after 2001-02.

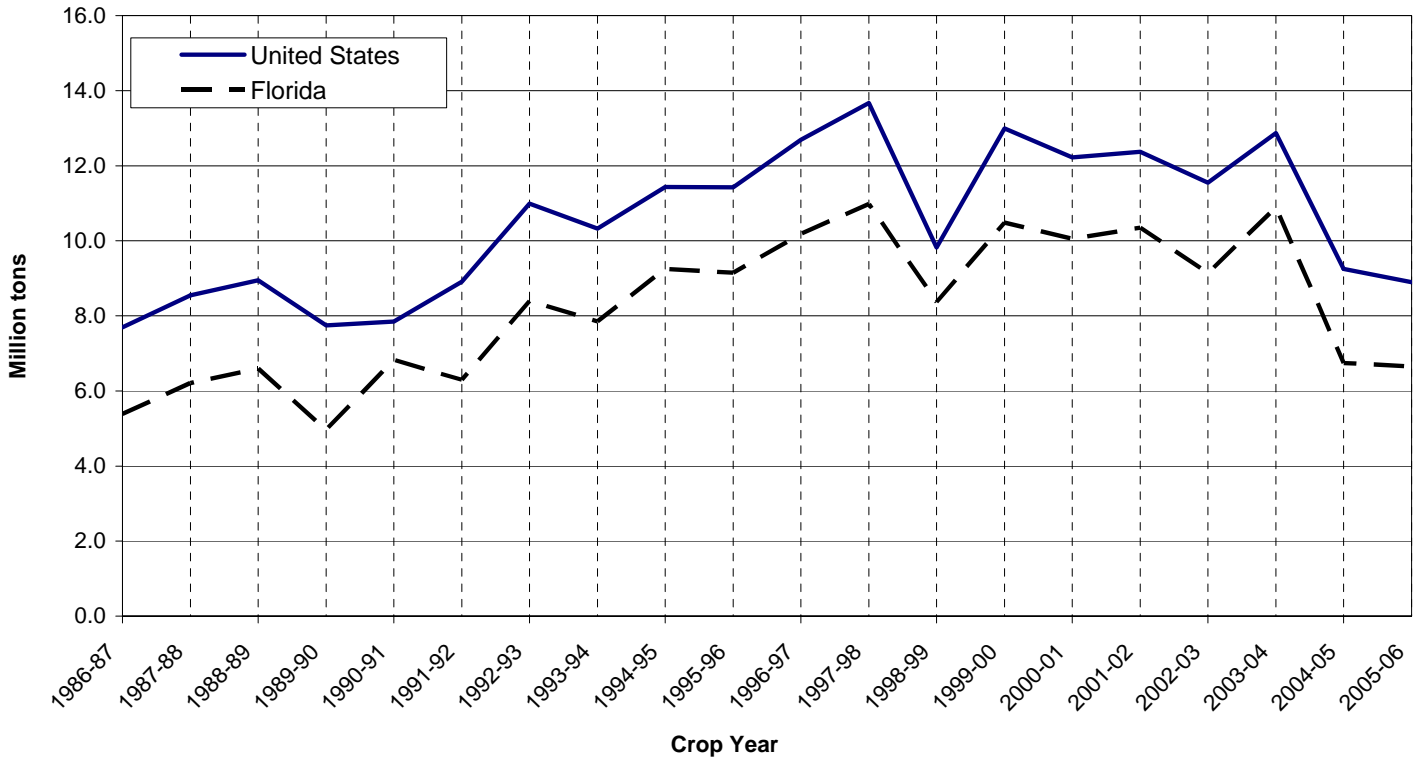
**CITRUS: Production for the United States and Florida
1986-87 through 2005-06**



**ORANGES: Bearing acreage and production, by states,
crop years 1986-87 through 2005-06**

Crop year	Florida		California		Texas		Arizona		United States	
	Bearing acreage	Production	Bearing acreage	Production	Bearing acreage	Production	Bearing acreage	Production	Bearing acreage	Production
	1,000 acres	1,000 tons	1,000 acres	1,000 tons	1,000 acres	1,000 tons	1,000 acres	1,000 tons	1,000 acres	1,000 tons
1986-87	375.4	5,387	172.9	2,172	10.3	37	10.9	101	569.5	7,697
1987-88	380.2	6,210	172.6	2,212	11.1	61	10.6	68	574.5	8,551
1988-89	388.7	6,597	177.6	2,209	12.0	79	10.4	64	588.7	8,949
1989-90	399.5	4,959	175.1	2,676	13.0	51	10.2	59	597.8	7,745
1990-91	420.9	6,822	178.4	960	3.5	0	9.9	66	612.7	7,848
1991-92	444.4	6,291	181.8	2,528	3.5	1	10.4	89	640.1	8,909
1992-93	489.2	8,397	184.0	2,505	4.4	21	10.6	69	688.2	10,992
1993-94	510.8	7,849	185.0	2,385	5.5	24	10.6	71	711.9	10,329
1994-95	562.8	9,248	191.0	2,101	7.0	44	10.4	39	771.2	11,432
1995-96	594.8	9,149	196.0	2,175	7.9	40	9.4	62	808.1	11,426
1996-97	624.9	10,179	200.0	2,400	8.7	60	10.0	53	843.6	12,692
1997-98	609.2	10,980	200.2	2,587	9.5	65	9.1	38	828.0	13,670
1998-99	612.6	8,370	201.5	1,350	9.1	61	6.9	43	830.1	9,824
1999-00	602.1	10,485	195.5	2,400	9.1	71	6.2	41	812.9	12,997
2000-01	605.0	10,049	194.5	2,043	9.1	95	6.4	34	815.0	12,221
2001-02	586.9	10,350	195.0	1,931	9.3	74	6.4	19	797.6	12,374
2002-03	587.6	9,135	189.5	2,326	8.8	66	5.8	18	791.7	11,545
2003-04	564.8	10,890	184.0	1,894	8.8	70	5.5	18	763.1	12,872
2004-05	541.8	6,741	182.0	2,419	8.8	76	5.0	16	737.6	9,252
2005-06	491.0	6,657	181.0	2,156	8.8	68	4.3	17	685.1	8,898

**ORANGES: Production for the United States and Florida
1986-87 through 2005-06**

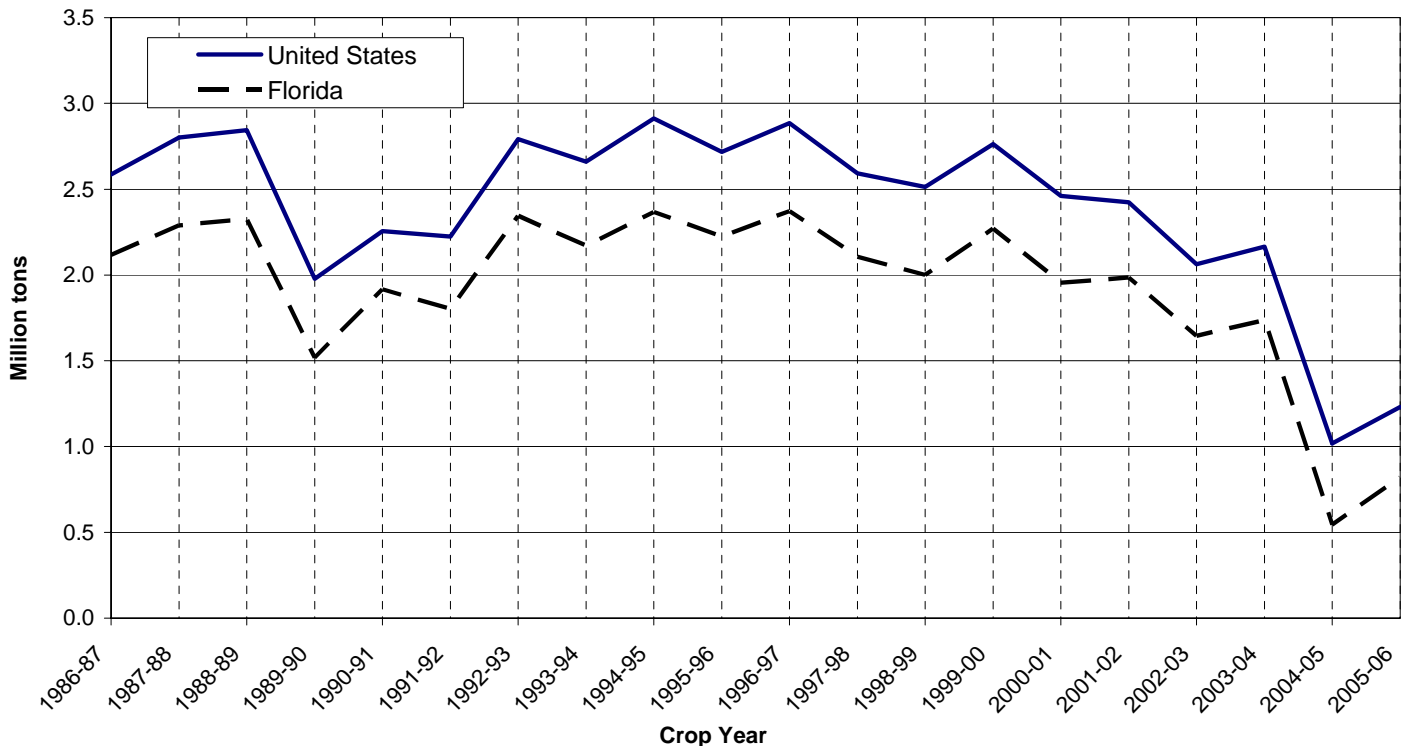


**GRAPEFRUIT: Bearing acreage and production, by states,
crop years 1986-87 through 2005-06**

Crop year	Florida		Texas		California		Arizona		United States	
	Bearing acreage	Production ^{1/}	Bearing acreage	Production	Bearing acreage	Production ^{2/}	Bearing acreage	Production ^{2/}	Bearing acreage	Production
	<i>1,000 acres</i>	<i>1,000 tons</i>	<i>1,000 acres</i>	<i>1,000 tons</i>	<i>1,000 acres</i>	<i>1,000 tons</i>	<i>1,000 acres</i>	<i>1,000 tons</i>	<i>1,000 acres</i>	<i>1,000 tons</i>
1986-87	106.0	2,116	15.2	77	20.8	305	5.9	88	147.9	2,586
1987-88	106.0	2,289	16.0	152	20.7	298	6.0	62	148.7	2,801
1988-89	106.9	2,327	16.9	192	19.9	263	6.5	62	150.2	2,844
1989-90	103.0	1,517	18.7	80	19.2	310	6.4	71	147.3	1,978
1990-91	104.2	1,916	4.5	0	18.3	263	6.2	77	133.2	2,256
1991-92	104.7	1,802	7.5	3	18.5	330	5.9	89	136.6	2,224
1992-93	111.9	2,344	10.1	75	17.8	303	5.9	69	145.7	2,791
1993-94	118.3	2,171	12.8	120	18.0	311	5.9	59	155.0	2,661
1994-95	127.3	2,367	15.0	186	18.4	312	5.7	47	166.4	2,912
1995-96	132.8	2,225	17.7	182	18.8	271	5.1	40	174.4	2,718
1996-97	139.2	2,371	20.4	212	18.0	275	4.4	27	182.0	2,885
1997-98	127.8	2,106	23.1	192	16.8	268	4.0	27	171.7	2,593
1998-99	116.6	2,000	20.0	244	16.6	244	3.3	25	156.5	2,513
1999-00	114.1	2,270	20.0	237	16.6	241	2.8	15	153.5	2,763
2000-01	107.8	1,955	20.0	288	15.4	211	2.0	8	145.2	2,462
2001-02	101.3	1,985	19.0	236	14.0	198	2.0	5	136.3	2,424
2002-03	95.5	1,645	18.5	226	13.0	188	1.5	4	128.5	2,063
2003-04	82.3	1,738	18.5	228	12.5	194	1.5	5	114.8	2,165
2004-05	71.0	544	18.5	264	12.0	205	1.5	5	103.0	1,018
2005-06	59.8	820	18.5	208	11.5	201	1.2	3	91.0	1,232

^{1/} Excludes economic abandonment in 1995-96 of 127,500 tons of colored seedless; in 1996-97 of 127,500 tons of white seedless and 127,500 tons of colored seedless; in 1997-98 of 212,500 tons of white seedless and 42,500 tons of colored seedless; and in 2000-01 of 85,000 tons of colored seedless. ^{2/} Box weight for California Desert and Arizona grapefruit changed in 1993-94.

**GRAPEFRUIT: Production for the United States and Florida
1986-87 through 2005-06**



FLORIDA CITRUS: Trees, acreage, yield, production, utilization, season average price, and value
for crop years 1986-87 through 2005-06 ^{1/}

Crop year	Bearing trees	Bearing acreage	Yield per acre	Utilization of production			On-tree	
				Total	Fresh	Processed	Price per box	Value of production
	<i>1,000 trees</i>	<i>1,000 acres</i>	<i>Boxes</i>	<i>1,000 boxes</i>			<i>Dollars</i>	<i>1,000 dollars</i>
ALL ROUND ORANGES								
1986-87	33,752	375.4	319	119,700	8,870	110,830	5.22	624,771
1987-88	35,537	380.2	363	138,000	9,520	128,480	7.58	1,046,700
1988-89	36,750	388.7	377	146,600	8,488	138,112	7.41	1,086,319
1989-90	40,666	399.5	276	110,200	5,922	104,278	6.21	684,226
1990-91	44,077	420.9	360	151,600	12,451	139,149	5.89	892,675
1991-92	49,577	444.4	315	139,800	11,552	128,248	5.93	828,749
1992-93	56,601	489.2	381	186,600	10,724	175,876	3.48	649,713
1993-94	61,708	510.8	341	174,400	9,898	164,502	4.09	713,312
1994-95	69,295	562.8	365	205,500	10,441	195,059	3.74	767,924
1995-96	75,287	594.8	342	203,300	9,969	193,331	4.40	895,465
1996-97	78,525	624.9	362	226,200	10,696	215,504	3.54	801,344
1997-98	78,587	609.2	401	244,000	11,010	232,990	3.69	900,815
1998-99	79,608	612.6	304	186,000	10,860	175,140	4.84	900,044
1999-00	78,721	602.1	387	233,000	9,393	223,607	3.67	856,052
2000-01	79,565	605.0	369	223,300	9,702	213,598	3.21	716,055
2001-02	77,596	586.9	392	230,000	9,381	220,619	3.47	797,602
2002-03	78,037	587.6	345	203,000	9,713	193,287	3.17	643,804
2003-04	75,392	564.8	428	242,000	9,893	232,107	2.89	699,927
2004-05	72,592	541.8	276	149,800	7,397	142,403	3.49	522,892
2005-06	65,954	491.0	301	147,900	7,346	140,554	5.46	807,576
EARLY, MIDSEASON, AND NAVEL ORANGES								
1986-87	17,320	189.1	348	65,800	5,267	60,533	4.56	300,290
1987-88	18,822	198.1	396	78,500	5,870	72,630	6.72	527,169
1988-89	19,744	205.4	415	85,300	5,434	79,866	6.69	571,082
1989-90	22,034	215.3	316	68,100	4,851	63,249	6.01	409,376
1990-91	23,511	223.3	392	87,500	5,966	81,534	5.38	471,049
1991-92	27,051	243.3	343	83,400	7,780	75,620	5.44	453,501
1992-93	30,379	264.1	433	114,300	6,958	107,342	3.23	369,438
1993-94	32,312	271.7	395	107,300	6,838	100,462	3.76	403,802
1994-95	36,244	299.4	400	119,700	6,681	113,019	3.25	389,515
1995-96	38,914	314.5	385	121,200	6,597	114,603	3.62	438,350
1996-97	40,292	328.9	408	134,200	7,181	127,019	3.18	427,344
1997-98	39,861	317.4	441	140,000	7,635	132,365	2.81	393,577
1998-99	40,124	317.7	353	112,000	6,164	105,836	4.35	487,205
1999-00	38,833	306.7	437	134,000	6,505	127,495	3.19	427,513
2000-01	38,446	302.1	424	128,000	6,225	121,775	2.60	332,991
2001-02	36,617	286.4	447	128,000	6,424	121,576	2.88	369,069
2002-03	36,355	283.0	396	112,000	6,773	105,227	2.62	293,594
2003-04	34,445	266.3	473	126,000	5,615	120,385	2.20	277,715
2004-05	32,165	249.3	317	79,100	4,403	74,697	2.82	223,193
2005-06	28,784	220.4	340	75,000	4,896	70,104	4.53	339,514

^{1/} 2005-06 preliminary.

FLORIDA CITRUS: Trees, acreage, yield, production, utilization, season average price, and value
for crop years 1986-87 through 2005-06 ^{1/}

Crop year	Bearing trees	Bearing acreage	Yield per acre	Utilization of production			On-tree	
				Total	Fresh	Processed	Price per box	Value of production
	<i>1,000 trees</i>	<i>1,000 acres</i>	<i>Boxes</i>		<i>1,000 boxes</i>		<i>Dollars</i>	<i>1,000 dollars</i>
LATE (VALENCIA) ORANGES								
1986-87	16,432	186.3	289	53,900	3,603	50,297	6.02	324,481
1987-88	16,715	182.1	327	59,500	3,650	55,850	8.73	519,531
1988-89	17,006	183.3	334	61,300	3,054	58,246	8.41	515,237
1989-90	18,632	184.2	229	42,100	1,071	41,029	6.53	274,850
1990-91	20,566	197.6	324	64,100	6,485	57,615	6.58	421,626
1991-92	22,526	201.1	280	56,400	3,772	52,628	6.65	375,248
1992-93	26,222	225.1	321	72,300	3,766	68,534	3.88	280,275
1993-94	29,396	239.1	281	67,100	3,060	64,040	4.61	309,510
1994-95	33,051	263.4	326	85,800	3,760	82,040	4.41	378,409
1995-96	36,373	280.3	293	82,100	3,372	78,728	5.57	457,115
1996-97	38,233	296.0	311	92,000	3,515	88,485	4.07	374,000
1997-98	38,726	291.8	356	104,000	3,375	100,625	4.88	507,238
1998-99	39,484	294.9	251	74,000	4,696	69,304	5.58	412,839
1999-00	39,888	295.4	335	99,000	2,888	96,112	4.33	428,539
2000-01	41,119	302.9	315	95,300	3,477	91,823	4.02	383,064
2001-02	40,979	300.5	339	102,000	2,957	99,043	4.20	428,533
2002-03	41,682	304.6	299	91,000	2,940	88,060	3.85	350,210
2003-04	40,947	298.5	389	116,000	4,278	111,722	3.64	422,212
2004-05	40,427	292.5	242	70,700	2,994	67,706	4.24	299,699
2005-06	37,170	270.6	269	72,900	2,450	70,450	6.42	468,062
NAVEL ORANGES								
1986-87	973	10.1	248	2,500	1,932	568	7.98	19,950
1987-88	1,207	12.5	208	2,600	2,046	554	9.21	23,946
1988-89	1,367	14.2	218	3,100	2,312	788	8.62	26,727
1989-90	1,585	16.5	176	2,900	2,135	765	9.62	27,886
1990-91	1,638	16.9	219	3,700	2,787	913	8.76	32,423
1991-92	1,998	17.9	207	3,700	2,992	708	10.67	39,473
1992-93	2,295	20.0	240	4,800	3,537	1,263	4.85	23,268
1993-94	2,465	20.9	196	4,100	3,123	977	7.75	31,788
1994-95	2,749	22.9	253	5,800	3,748	2,052	3.78	21,900
1995-96	2,963	24.1	216	5,200	3,406	1,794	4.63	24,051
1996-97	3,160	25.7	249	6,400	4,291	2,109	3.73	23,866
1997-98	3,001	23.9	264	6,300	4,154	2,146	3.20	20,172
1998-99	2,989	23.6	212	5,000	3,629	1,371	7.34	36,718
1999-00	2,850	22.5	240	5,400	3,591	1,809	4.40	23,759
2000-01	2,752	21.6	236	5,100	3,676	1,424	3.10	15,830
2001-02	2,439	19.2	286	5,500	3,920	1,580	4.19	23,032
2002-03	2,313	18.2	297	5,400	3,882	1,518	4.93	26,597
2003-04	2,014	15.7	274	4,300	3,112	1,188	4.26	18,302
2004-05	1,784	13.7	182	2,500	2,017	483	9.68	24,191
2005-06	1,525	11.8	322	3,800	2,861	939	5.65	21,476

^{1/} 2005-06 preliminary.

FLORIDA CITRUS: Trees, acreage, yield, production, utilization, season average price, and value
for crop years 1986-87 through 2005-06 ^{1/}

Crop year	Bearing trees	Bearing acreage	Yield per acre	Utilization of production			On-tree	
				Total	Fresh	Processed	Price per box	Value of production
	<i>1,000 trees</i>	<i>1,000 acres</i>	<i>Boxes</i>		<i>1,000 boxes</i>		<i>Dollars</i>	<i>1,000 dollars</i>
ALL GRAPEFRUIT								
1986-87	8,491	106.0	470	49,800	20,938	28,862	4.98	248,120
1987-88	8,655	106.0	508	53,850	23,110	30,740	5.57	299,887
1988-89	8,807	106.9	512	54,750	23,902	30,848	4.45	243,874
1989-90	8,748	103.0	347	35,700	13,344	22,356	5.65	201,756
1990-91	9,026	104.2	433	45,100	23,923	21,177	5.66	255,328
1991-92	9,557	104.7	405	42,400	22,841	19,559	6.62	280,629
1992-93	10,546	111.9	493	55,150	23,154	31,996	2.66	146,432
1993-94	11,514	118.3	432	51,050	22,502	28,548	3.28	167,211
1994-95	12,660	127.3	438	55,700	22,239	33,461	2.09	116,602
1995-96	13,633	132.8	394	^{2/} 52,350	22,843	29,507	1.93	101,140
1996-97	14,189	139.2	401	^{2/} 55,800	23,237	32,563	1.55	86,583
1997-98	13,470	127.8	388	^{2/} 49,550	21,160	28,390	1.27	63,000
1998-99	12,431	116.6	404	47,050	19,921	27,129	2.30	108,411
1999-00	12,204	114.1	468	53,400	18,217	35,183	3.53	188,332
2000-01	11,656	107.8	427	^{2/} 46,000	17,490	28,510	2.19	100,869
2001-02	10,870	101.3	461	46,700	17,394	29,306	2.31	107,653
2002-03	10,296	95.5	405	38,700	15,589	23,111	2.44	94,518
2003-04	8,968	82.3	497	40,900	16,657	24,243	3.33	136,295
2004-05	7,791	71.0	180	12,800	7,419	5,381	13.47	172,365
2005-06	6,543	59.8	323	19,300	6,914	12,386	9.02	174,084
SEEDY GRAPEFRUIT ^{3/}								
1986-87	641	9.5	305	2,900	^{4/}	2,900	4.27	12,383
1987-88	622	8.9	309	2,750	^{4/}	2,750	4.99	13,723
1988-89	612	8.7	385	3,350	^{4/}	3,350	3.68	12,328
1989-90	529	7.1	197	1,400	^{4/}	1,400	3.84	5,376
1990-91	457	6.1	262	1,600	^{4/}	1,600	3.93	6,288
1991-92	396	4.9	245	1,200	^{4/}	1,200	4.57	5,484
1992-93	403	5.0	350	1,750	^{4/}	1,750	1.88	3,290
1993-94	386	4.7	223	1,050	^{4/}	1,050	1.78	1,869
1994-95	384	4.6	283	1,300	^{4/}	1,300	2.03	2,639
1995-96	370	4.3	244	1,050	^{4/}	1,050	1.73	1,817
1996-97	364	4.4	205	900	^{4/}	900	0.13	117
1997-98	296	3.4	191	650	^{4/}	650	0.10	65
1998-99	231	2.6	212	550	^{4/}	550	0.79	435
1999-00	214	2.4	250	600	^{4/}	600	2.96	1,776
2000-01	--	--	--	--	--	--	--	--
2001-02	--	--	--	--	--	--	--	--
2002-03	--	--	--	--	--	--	--	--
2003-04	--	--	--	--	--	--	--	--
2004-05	--	--	--	--	--	--	--	--
2005-06	--	--	--	--	--	--	--	--

^{1/} 2005-06 preliminary.

^{2/} Excludes economic abandonment in 1995-96 of 3.0 million boxes of colored seedless; in 1996-97 of 3.0 million boxes of white seedless and 3.0 million boxes of colored seedless; in 1997-98 of 5.0 million boxes of white seedless and 1.0 million boxes of colored seedless; and in 2000-01 of 2.0 million boxes of colored seedless.

^{3/} Seedy estimates discontinued after 1999-2000 crop. Included with white seedless beginning with the 2000-01 crop.

^{4/} Fresh sales negligible.

FLORIDA CITRUS: Trees, acreage, yield, production, utilization, season average price, and value
for crop years 1986-87 through 2005-06 ^{1/}

Crop year	Bearing trees	Bearing acreage	Yield per acre	Utilization of production			On-tree	
				Total	Fresh	Processed	Price per box	Value of production
	<i>1,000 trees</i>	<i>1,000 acres</i>	<i>Boxes</i>		<i>1,000 boxes</i>		<i>Dollars</i>	<i>1,000 dollars</i>
WHITE GRAPEFRUIT ^{2/}								
1986-87	4,173	53.0	508	26,900	7,086	19,814	4.45	119,693
1987-88	4,126	51.6	566	29,200	8,020	21,180	5.35	156,360
1988-89	4,092	51.1	542	27,700	8,033	19,667	4.33	119,980
1989-90	3,942	48.2	373	18,000	4,054	13,946	5.21	93,737
1990-91	3,888	47.4	458	21,700	8,191	13,509	4.59	99,622
1991-92	3,844	44.9	425	19,100	6,754	12,346	6.46	123,337
1992-93	4,191	47.4	542	25,700	6,087	19,613	2.22	56,973
1993-94	4,554	49.7	493	24,500	6,459	18,041	3.23	79,254
1994-95	4,807	51.8	496	25,700	5,720	19,980	2.58	66,382
1995-96	5,039	52.6	441	23,200	5,862	17,338	2.14	49,726
1996-97	5,169	54.5	431	^{3/} 23,500	5,664	17,836	1.12	26,413
1997-98	4,888	49.6	369	^{4/} 18,300	4,791	13,509	0.93	16,995
1998-99	4,397	44.0	405	17,800	4,543	13,257	1.95	34,737
1999-00	4,336	43.1	485	20,900	4,271	16,629	3.87	80,848
2000-01	4,282	42.0	445	18,700	3,968	14,732	2.07	38,728
2001-02	4,142	40.8	463	18,900	3,530	15,370	1.96	37,073
2002-03	3,944	38.6	420	16,200	3,172	13,028	1.77	28,702
2003-04	3,247	31.3	508	15,900	3,273	12,627	1.94	30,862
2004-05	2,712	25.8	132	3,400	1,352	2,048	11.93	40,560
2005-06	2,214	21.3	305	6,500	1,433	5,067	9.22	59,945
COLORED GRAPEFRUIT								
1986-87	3,677	43.5	460	20,000	13,852	6,148	5.80	116,044
1987-88	3,907	45.5	481	21,900	15,090	6,810	5.93	129,804
1988-89	4,103	47.1	503	23,700	15,869	7,831	4.71	111,566
1989-90	4,277	47.7	342	16,300	9,290	7,010	6.30	102,643
1990-91	4,681	50.7	430	21,800	15,732	6,068	6.85	149,418
1991-92	5,317	54.9	403	22,100	16,087	6,013	6.87	151,808
1992-93	5,952	59.5	466	27,700	17,067	10,633	3.11	86,169
1993-94	6,574	63.9	399	25,500	16,043	9,457	3.38	86,088
1994-95	7,469	70.9	405	28,700	16,519	12,181	1.66	47,581
1995-96	8,224	75.9	370	^{3/} 28,100	16,981	11,119	1.77	49,597
1996-97	8,656	80.3	391	^{3/} 31,400	17,573	13,827	1.91	60,053
1997-98	8,286	74.8	409	^{5/} 30,600	16,369	14,231	1.50	45,940
1998-99	7,803	70.0	410	28,700	15,378	13,322	2.55	73,239
1999-00	7,654	68.6	465	31,900	13,946	17,954	3.31	105,708
2000-01	7,374	65.8	415	^{6/} 27,300	13,522	13,778	2.28	62,141
2001-02	6,728	60.5	460	27,800	13,864	13,936	2.54	70,580
2002-03	6,352	56.9	395	22,500	12,417	10,083	2.93	65,816
2003-04	5,721	51.0	490	25,000	13,384	11,616	4.22	105,433
2004-05	5,079	45.2	208	9,400	6,067	3,333	14.02	131,805
2005-06	4,329	38.5	332	12,800	5,481	7,319	8.92	114,139

^{1/} 2005-06 preliminary.

^{2/} Includes seedy grapefruit beginning with the 2000-01 crop.

^{3/} Excludes 3.0 million boxes of economic abandonment.

^{4/} Excludes 5.0 million boxes of economic abandonment.

^{5/} Excludes 1.0 million boxes of economic abandonment.

^{6/} Excludes 2.0 million boxes of economic abandonment.

**FLORIDA GRAPEFRUIT: Production by types, by areas of production,
for crop years 1996-97 through 2005-06 ^{1/}**

Crop year	White ^{2/}			Colored			Seedy		
	State	Interior	Indian River	State	Interior	Indian River	State	Interior	Indian River
	<i>1,000 boxes</i>								
1996-97	^{3/} 23,500	8,700	14,800	^{3/} 31,400	9,200	22,200	900	800	100
1997-98	^{4/} 18,300	6,200	12,100	^{5/} 30,600	9,600	21,000	650	550	100
1998-99	17,800	5,100	12,700	28,700	9,900	18,800	550	500	50
1999-00	20,900	6,600	14,300	31,900	11,500	20,400	600	500	100
2000-01	18,700	5,800	12,900	^{6/} 27,300	9,500	17,800	--	--	--
2001-02	18,900	6,700	12,200	27,800	8,600	19,200	--	--	--
2002-03	16,200	6,000	10,200	22,500	8,600	13,900	--	--	--
2003-04	15,900	4,500	11,400	25,000	8,800	16,200	--	--	--
2004-05	3,400	2,200	1,200	9,400	5,800	3,600	--	--	--
2005-06	6,500	2,500	4,000	12,800	4,800	8,000	--	--	--

^{1/} 2005-06 preliminary.

^{2/} Includes seedy grapefruit beginning with the 2000-01 crop.

^{3/} Excludes 3.0 million boxes of economic abandonment.

^{4/} Excludes 5.0 million boxes of economic abandonment.

^{5/} Excludes 1.0 million boxes of economic abandonment.

^{6/} Excludes 2.0 million boxes of economic abandonment.

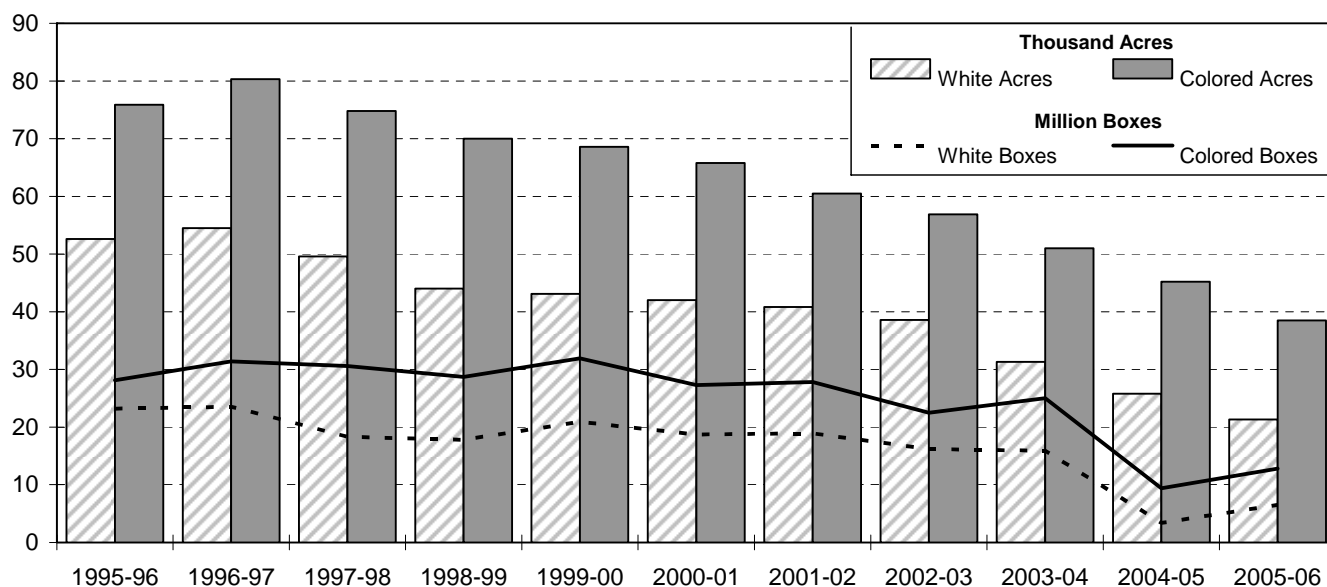
**FLORIDA GRAPEFRUIT: Season average on-tree prices per box, by utilization of sales and
areas of production, by types, for crop years 2000-01 through 2005-06 ^{1/}**

Crop year and area	White ^{2/}			Colored		
	Fresh	Processing	All sales	Fresh	Processing	All sales
	<i>Dollars</i>					
2000-01						
Interior	6.70	1.23	1.51	3.80	0.65	1.67
Indian River	6.50	0.64	2.31	4.50	-0.03	2.63
State average	6.53	0.87	2.07	4.30	0.29	2.28
2001-02						
Interior	8.00	1.30	1.77	5.70	0.57	2.32
Indian River	6.30	0.64	2.06	4.70	-0.11	2.63
State average	6.54	0.91	1.96	4.92	0.17	2.54
2002-03						
Interior	4.80	0.88	1.04	4.60	0.58	2.32
Indian River	7.85	-0.05	2.22	5.35	-0.13	3.30
State average	7.57	0.36	1.77	5.13	0.21	2.93
2003-04						
Interior	7.00	1.00	1.18	6.25	1.13	2.67
Indian River	7.50	0.24	2.24	7.55	0.23	5.08
State average	7.50	0.50	1.94	7.27	0.70	4.22
2004-05						
Interior	21.20	6.03	10.69	18.35	4.75	13.29
Indian River	21.35	4.85	14.15	20.15	4.77	15.14
State average	21.32	5.73	11.93	19.11	4.76	14.02
2005-06						
Interior	14.30	7.92	8.25	12.90	6.19	7.95
Indian River	16.30	6.63	9.78	13.50	4.97	9.47
State average	16.09	7.28	9.22	13.40	5.56	8.92

^{1/} 2005-06 preliminary.

^{2/} Includes seedy grapefruit beginning with the 2000-01 crop.

**FLORIDA GRAPEFRUIT: Bearing acreage and production by variety,
1995-96 through 2005-06**



Note: White grapefruit includes seedy grapefruit beginning with the 2001-02 crop.

FLORIDA CITRUS: Trees, acreage, yield, production, utilization, season average price, and value for crop years 1986-87 through 2005-06 ^{1/}

Crop year	Bearing trees	Bearing acreage	Yield per acre	Utilization of production			On-tree	
				Total	Fresh	Processed	Price per box	Value of production
	1,000 trees	1,000 acres	Boxes	1,000 boxes			Dollars	1,000 dollars
TANGELOS								
1986-87	889	9.5	421	4,000	1,310	2,690	3.72	14,891
1987-88	887	9.4	447	4,200	1,395	2,805	5.58	23,435
1988-89	904	9.5	400	3,800	1,348	2,452	6.31	23,994
1989-90	873	8.9	331	2,950	1,118	1,832	5.10	15,046
1990-91	815	8.0	331	2,650	1,186	1,464	6.11	16,203
1991-92	1,050	9.8	265	2,600	1,307	1,293	7.16	18,618
1992-93	1,161	10.5	290	3,050	1,316	1,734	3.31	10,092
1993-94	1,311	11.3	296	3,350	1,097	2,253	2.38	7,976
1994-95	1,458	12.4	254	3,150	1,106	2,044	2.64	8,318
1995-96	1,528	12.7	193	2,450	1,018	1,432	3.63	8,883
1996-97	1,561	13.3	297	3,950	1,032	2,918	2.19	8,645
1997-98	1,487	12.2	234	2,850	913	1,937	1.66	4,723
1998-99	1,439	11.7	218	2,550	838	1,712	4.53	11,560
1999-00	1,382	11.3	195	2,200	736	1,464	2.52	5,549
2000-01	1,338	10.8	194	2,100	742	1,358	1.27	2,671
2001-02	1,211	9.7	222	2,150	696	1,454	2.47	5,307
2002-03	1,151	9.1	258	2,350	608	1,742	2.60	6,114
2003-04	1,052	8.0	125	1,000	545	455	7.48	7,484
2004-05	814	6.4	242	1,550	495	1,055	2.45	3,794
2005-06	828	6.3	222	1,400	547	853	5.37	7,512

^{1/} 2005-06 preliminary.

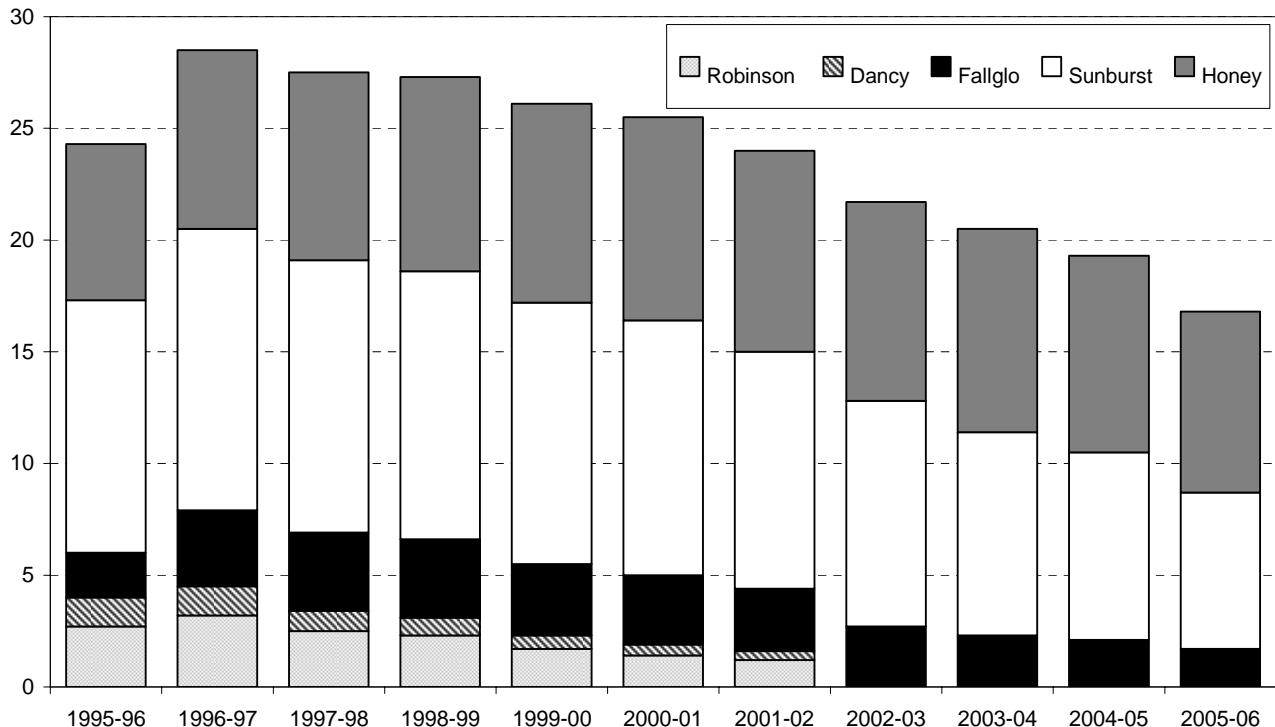
FLORIDA CITRUS: Trees, acreage, yield, production, utilization, season average price, and value
crop years 1986-87 through 2005-06 ^{1/}

Crop year	Bearing trees	Bearing acreage	Yield per acre	Utilization of production			On-tree	
				Total	Fresh	Processed	Price per box	Value of production
	<i>1,000 trees</i>	<i>1,000 acres</i>	<i>Boxes</i>		<i>1,000 boxes</i>		<i>Dollars</i>	<i>1,000 dollars</i>
ALL TANGERINES ^{2/}								
1986-87	768	7.5	312	2,340	1,462	878	10.92	25,563
1987-88	796	7.6	322	2,450	1,614	836	12.99	31,831
1988-89	794	7.7	377	2,900	1,639	1,261	12.64	36,652
1989-90	946	8.5	200	1,700	999	701	15.28	25,981
1990-91	1,021	8.7	224	1,950	1,227	723	17.10	33,349
1991-92	1,403	11.3	230	2,600	1,965	635	18.00	46,797
1992-93	1,781	13.7	204	2,800	2,065	735	13.75	38,503
1993-94	2,269	16.4	250	4,100	2,985	1,115	9.83	40,303
1994-95	2,831	20.1	177	3,550	2,662	888	11.98	42,539
1995-96	3,536	24.3	185	4,500	3,144	1,356	12.59	56,646
1996-97	4,330	28.5	221	6,300	3,757	2,543	7.99	50,343
1997-98	4,130	27.5	189	5,200	3,428	1,772	8.49	44,126
1998-99	4,149	27.3	181	4,950	3,570	1,380	12.07	59,763
1999-00	3,943	26.1	268	7,000	4,420	2,580	6.66	46,622
2000-01	3,888	25.5	220	5,600	3,755	1,845	6.40	35,867
2001-02	3,638	24.0	275	6,600	4,214	2,386	7.81	51,554
2002-03	3,316	21.7	253	5,500	3,914	1,586	8.40	46,217
2003-04	3,108	20.5	317	6,500	4,440	2,060	7.46	48,464
2004-05	2,921	19.3	231	4,450	3,318	1,132	12.02	53,503
2005-06	2,535	16.8	327	5,500	3,608	1,892	9.44	51,907

^{1/} 2005-06 preliminary.

^{2/} Sunburst tangerines included beginning in 1989-90. Fallglo tangerines included beginning in 1993-94. Dancy and Robinson estimates discontinued after 2001-02.

FLORIDA TANGERINES: Bearing acreage by variety, 1996-97 through 2005-06



NOTE: Dancy and Robinson varieties included through 2001-02

FLORIDA CITRUS: Trees, acreage, yield, production, utilization, season average price, and value
crop years 1986-87 through 2005-06 ^{1/}

Crop year	Bearing trees	Bearing acreage	Yield per acre	Utilization of production			On-tree	
				Total	Fresh	Processed	Price per box	Value of production
	<i>1,000 trees</i>	<i>1,000 acres</i>	<i>Boxes</i>	<i>1,000 boxes</i>			<i>Dollars</i>	<i>1,000 dollars</i>
EARLY TANGERINES ^{2/}								
1986-87	341	3.6	361	1,300	814	486	11.99	15,586
1987-88	343	3.5	371	1,300	828	472	12.65	16,447
1988-89	344	3.6	389	1,400	848	552	12.56	17,577
1989-90	453	4.2	252	1,060	792	268	16.68	17,679
1990-91	515	4.4	193	850	529	321	15.78	13,429
1991-92	832	6.5	205	1,330	1,000	330	18.39	24,479
1992-93	1,107	8.4	167	1,400	1,091	309	14.35	20,090
1993-94	1,522	10.8	219	2,370	1,715	655	9.76	23,140
1994-95	2,022	14.1	167	2,350	1,794	556	7.95	18,691
1995-96	2,542	17.3	168	2,900	2,025	875	10.76	31,200
1996-97	3,150	20.5	220	4,500	2,713	1,787	6.28	28,260
1997-98	2,882	19.1	168	3,200	2,060	1,140	6.72	21,504
1998-99	2,837	18.6	164	3,050	2,172	878	10.03	30,601
1999-00	2,606	17.2	253	4,350	2,630	1,720	6.15	26,739
2000-01	2,518	16.4	216	3,550	2,475	1,075	4.93	17,490
2001-02	2,285	15.0	290	4,350	2,790	1,560	6.93	30,156
2002-03	1,969	12.8	234	3,000	2,110	890	8.39	25,163
2003-04	1,725	11.4	316	3,600	2,307	1,293	6.15	22,142
2004-05	1,579	10.5	233	2,450	1,814	636	10.12	24,785
2005-06	1,301	8.7	328	2,850	1,913	937	10.40	29,640
HONEY TANGERINES								
1986-87	427	3.9	267	1,040	648	392	9.57	9,953
1987-88	453	4.1	280	1,150	786	364	13.41	15,424
1988-89	450	4.1	366	1,500	791	709	12.73	19,097
1989-90	493	4.3	149	640	207	433	13.02	8,332
1990-91	506	4.3	256	1,100	698	402	18.07	19,881
1991-92	571	4.8	265	1,270	965	305	17.59	22,344
1992-93	674	5.3	264	1,400	974	426	13.17	18,433
1993-94	747	5.6	309	1,730	1,270	460	9.90	17,131
1994-95	809	6.0	200	1,200	868	332	19.76	23,716
1995-96	994	7.0	229	1,600	1,119	481	15.16	24,262
1996-97	1,180	8.0	225	1,800	1,044	756	12.18	21,929
1997-98	1,248	8.4	238	2,000	1,368	632	11.34	22,679
1998-99	1,312	8.7	218	1,900	1,398	502	15.32	29,113
1999-00	1,337	8.9	298	2,650	1,790	860	7.45	19,734
2000-01	1,370	9.1	225	2,050	1,280	770	9.05	18,545
2001-02	1,353	9.0	250	2,250	1,424	826	9.61	21,612
2002-03	1,347	8.9	281	2,500	1,804	696	8.36	20,897
2003-04	1,383	9.1	319	2,900	2,133	767	9.16	26,575
2004-05	1,342	8.8	227	2,000	1,504	496	14.36	28,727
2005-06	1,234	8.1	327	2,650	1,695	955	8.45	22,391

^{1/} 2005-06 preliminary.

^{2/} Dancy and Robinson varieties discontinued after 2001-02; Sunburst included beginning in 1989-90; and Fallglo included beginning in 1993-94.

FLORIDA CITRUS: Trees, acreage, yield, production, utilization, season average price, and value
crop years 1986-87 through 2005-06 ^{1/}

Crop year	Bearing trees	Bearing acreage	Yield per acre	Utilization of production			On-tree	
				Total	Fresh	Processed	Price per box	Value of production
	<i>1,000 trees</i>	<i>1,000 acres</i>	<i>Boxes</i>	<i>1,000 boxes</i>			<i>Dollars</i>	<i>1,000 dollars</i>
LIMES								
1986-87	1,059	6.7	216	1,450	850	600	8.57	12,424
1987-88	1,100	7.0	186	1,300	860	440	12.69	16,493
1988-89	1,036	6.6	189	1,250	950	300	11.29	14,112
1989-90	1,040	6.7	246	1,650	1,010	640	8.26	13,634
1990-91	967	6.2	234	1,450	930	520	13.99	20,289
1991-92	983	6.3	254	1,600	1,070	530	9.12	14,589
1992-93 ^{2/}	983	6.3	159	1,000	730	270	1.02	1,017
1993-94	295	1.9	105	200	150	50	12.70	2,540
1994-95	256	1.9	121	230	190	40	8.65	1,989
1995-96	294	2.0	150	300	240	60	8.05	2,414
1996-97	323	2.1	152	320	255	65	6.93	2,216
1997-98	410	2.7	163	440	330	110	6.90	3,035
1998-99	427	2.7	185	500	410	90	12.83	6,413
1999-00	473	2.8	214	600	500	100	11.21	6,728
2000-01	184	1.2	208	250	220	30	12.00	2,999
2001-02	135	0.8	188	150	125	25	6.19	929
2002-03 ^{3/}	--	--	--	--	--	--	--	--
2003-04	--	--	--	--	--	--	--	--
2004-05	--	--	--	--	--	--	--	--
2005-06	--	--	--	--	--	--	--	--
TEMPLES								
1986-87	856	9.4	362	3,400	1,053	2,347	3.60	12,236
1987-88	862	9.3	382	3,550	1,292	2,258	5.69	20,196
1988-89	859	9.3	403	3,750	869	2,881	5.46	20,474
1989-90	776	8.0	175	1,400	139	1,261	5.64	7,889
1990-91	744	7.7	325	2,500	794	1,706	6.31	15,786
1991-92	720	7.1	331	2,350	848	1,502	6.51	15,289
1992-93	744	7.3	342	2,500	947	1,553	2.99	7,475
1993-94	689	6.7	336	2,250	785	1,465	2.73	6,136
1994-95	695	6.8	375	2,550	786	1,764	3.47	8,848
1995-96	691	6.6	326	2,150	693	1,457	4.44	9,543
1996-97	689	6.7	358	2,400	555	1,845	3.22	7,723
1997-98	675	6.2	363	2,250	566	1,684	3.07	6,898
1998-99	672	6.0	300	1,800	593	1,207	5.12	9,208
1999-00	649	5.8	336	1,950	440	1,510	2.55	4,971
2000-01	637	5.5	227	1,250	343	907	2.05	2,565
2001-02	552	4.7	330	1,550	418	1,132	2.19	3,395
2002-03	509	4.2	310	1,300	305	995	2.01	2,615
2003-04	393	3.4	412	1,400	342	1,058	1.07	1,502
2004-05	332	2.9	224	650	213	437	2.48	1,615
2005-06	289	2.5	280	700	209	491	3.16	2,214

^{1/} 2005-06 preliminary.

^{2/} Hurricane Andrew August 24, 1992.

^{3/} Estimates discontinued.

FLORIDA CITRUS PRODUCTS: Annual packs of citrus, FCOJ yield, and all citrus feeds, crop years 1991-92 through 2005-06

Crop year	Orange juice ^{1/}							
	Concentrated ^{2/}					Chilled		Other processed ^{3/}
	Product	Boxes used	Yield			Product	Boxes used	Boxes used
			All	Early-mid	Late			
	<i>1,000 gallons</i>	<i>1,000 boxes</i>	<i>Gallons per box</i>			<i>1,000 gallons</i>	<i>1,000 boxes</i>	<i>1,000 boxes</i>
1991-92	145,421	93,932	1.54818	1.46846	1.69608	NA	NA	456
1992-93	208,662	132,154	1.57893	1.52480	1.68686	NA	NA	355
1993-94	182,231	116,248	1.56760	1.52073	1.65942	311,120	51,015	225
1994-95	216,502	144,678	1.49644	1.44400	1.58230	326,658	53,410	289
1995-96	202,353	132,907	1.52252	1.44775	1.66979	384,124	62,146	224
1996-97	241,800	153,842	1.57174	1.52360	1.67701	400,279	65,676	842
1997-98	253,734	160,865	1.57731	1.49255	1.71525	452,074	74,767	989
1998-99	158,884	97,247	1.63381	1.58414	1.74806	505,506	80,112	756
1999-00	207,708	134,204	1.54770	1.47574	1.66336	558,821	90,085	2,387
2000-01	196,055	124,072	1.58018	1.54073	1.64573	543,284	89,564	2,246
2001-02	215,057	135,975	1.58160	1.52774	1.65789	531,274	85,869	1,385
2002-03	156,845	102,073	1.53659	1.49199	1.60587	561,687	92,506	1,445
2003-04	218,296	139,727	1.55656	1.44560	1.69155	559,077	93,393	500
2004-05	85,998	54,322	1.58311	1.52920	1.67671	556,941	88,514	1,059
2005-06	84,600	51,873	1.62745	1.52690	1.75268	575,057	88,662	1,363

Crop year	Grapefruit juice					Tangerine juice			All Citrus	
	Concentrated ^{4/}		Chilled		Other ^{3/} processed	Concentrated ^{2/}		Other ^{3/ 5/} processed	Feed	Molasses
	Product	Boxes used	Product	Boxes used	Boxes used	Product	Boxes used	Boxes used		
		<i>1,000 gallons</i>	<i>1,000 boxes</i>	<i>1,000 gallons</i>	<i>1,000 boxes</i>	<i>1,000 boxes</i>	<i>1,000 gallons</i>	<i>1,000 boxes</i>	<i>1,000 boxes</i>	<i>1,000 tons</i>
1991-92	19,458	16,099	12,604	2,402	600	297	144	0	637	24
1992-93	31,527	26,595	23,086	4,466	548	329	187	0	874	31
1993-94	26,485	22,324	29,307	5,711	289	529	335	0	832	25
1994-95	31,344	27,343	29,310	5,557	303	1,192	832	0	941	26
1995-96	26,930	22,993	31,900	6,147	135	5,819	699	0	928	27
1996-97	30,032	24,981	37,209	7,135	447	2,386	1,470	1,073	1,071	34
1997-98	24,223	20,578	36,295	7,225	587	1,461	929	843	1,137	28
1998-99	24,512	19,050	39,375	7,516	563	1,191	702	678	851	20
1999-00	28,642	24,070	51,780	10,397	716	1,646	982	1,598	1,370	31
2000-01	27,207	21,201	32,877	6,362	947	852	552	1,293	1,011	32
2001-02	27,294	21,686	33,613	6,414	1,206	1,758	1,174	1,212	1,027	30
2002-03	19,375	15,958	32,434	6,221	932	1,457	971	615	844	16
2003-04	20,897	17,186	34,275	6,586	471	1,263	829	1,231	1,131	38
2004-05	3,057	2,466	16,010	2,763	152	704	482	650	600	54
2005-06	9,717	8,002	21,960	4,122	262	525	341	1,551	580	31

^{1/} Includes Tangelos and Temples. K-Early Citrus Fruit included through 2001-02.

^{2/} 42.0 degrees Brix.

^{3/} Prior to 1996-97, canned and blended juice only. Since 1996-97 includes sections and salads, canned, fresh squeezed, and blends. Tangerines may include chilled.

^{4/} 40.0 degrees Brix.

^{5/} Used primarily in FCOJ.

SOURCE: See Page 47, Data Sources, Item 3

ORANGES AND TEMPLES: Utilization, season average on-tree price, and value by types, by states, crop years 2001-02 through 2005-06 ^{1/}

Crop year	Utilization of production			Price per box			Value of production		
	Fresh	Proc	Total	Fresh	Proc	Total	Fresh	Proc	Total
	<i>1,000 boxes</i>			<i>Dollars per box</i>			<i>1,000 dollars</i>		
UNITED STATES ORANGES									
2001-02	55,484	228,276	283,760	8.97	3.26	4.25	506,482	737,055	1,243,537
2002-03	61,040	206,000	267,040	6.52	2.79	3.56	400,187	564,984	965,171
2003-04	55,930	238,690	294,620	8.63	2.74	3.74	493,089	650,179	1,143,268
2004-05	58,162	158,338	216,500	9.24	2.86	4.41	541,149	440,744	981,893
2005-06	50,152	157,298	207,450	9.87	4.87	5.96	501,359	749,703	1,251,062
FLORIDA ORANGES									
2001-02	9,381	220,619	230,000	4.84	3.41	3.47	45,396	752,206	797,602
2002-03	9,713	193,287	203,000	5.61	3.05	3.17	54,527	589,277	643,804
2003-04	9,893	232,107	242,000	3.87	2.85	2.89	38,302	661,625	699,927
2004-05	7,397	142,403	149,800	6.87	3.31	3.49	50,828	472,064	522,892
2005-06	7,346	140,554	147,900	5.80	5.44	5.46	42,605	764,971	807,576
CALIFORNIA ORANGES									
2001-02	44,250	7,250	51,500	10.23	-2.13	8.49	452,486	-15,448	437,038
2002-03	49,800	12,200	62,000	6.84	-2.04	5.09	340,592	-24,900	315,692
2003-04	44,500	6,000	50,500	10.08	-1.97	8.65	448,748	-11,848	436,900
2004-05	49,200	15,300	64,500	9.75	-2.06	6.95	479,480	-31,506	447,974
2005-06	41,300	16,200	57,500	10.88	-0.97	7.54	449,338	-15,689	433,649
TEXAS ORANGES									
2001-02	1,394	346	1,740	3.86	1.30	3.35	5,386	450	5,836
2002-03	1,128	442	1,570	3.44	1.70	2.95	3,875	751	4,626
2003-04	1,169	481	1,650	3.66	1.25	2.96	4,281	602	4,883
2004-05	1,232	538	1,770	7.47	0.71	5.41	9,198	382	9,580
2005-06	1,270	330	1,600	6.09	1.94	5.23	7,731	640	8,371
ARIZONA ORANGES									
2001-02	459	61	520	7.00	-2.51	5.89	3,214	-153	3,061
2002-03	399	71	470	2.99	-2.03	2.23	1,193	-144	1,049
2003-04	368	102	470	4.78	-1.96	3.31	1,758	-200	1,558
2004-05	333	97	430	4.93	-2.02	3.37	1,643	-196	1,447
2005-06	236	214	450	7.14	-1.02	3.26	1,685	-219	1,466
FLORIDA TEMPLES									
2001-02	418	1,132	1,550	4.90	1.19	2.19	2,048	1,347	3,395
2002-03	305	995	1,300	3.65	1.51	2.01	1,113	1,502	2,615
2003-04	342	1,058	1,400	3.65	0.24	1.07	1,248	254	1,502
2004-05	213	437	650	4.05	1.72	2.48	863	752	1,615
2005-06	209	491	700	6.60	1.70	3.16	1,379	835	2,214

^{1/} 2005-06 preliminary.

ORANGES: Utilization, season average on-tree price, and value by types, by states,
crop years 2001-02 through 2005-06 ^{1/}

Crop year	Utilization of production			Price per box			Value of production		
	Fresh	Proc	Total	Fresh	Proc	Total	Fresh	Proc	Total
	<i>1,000 boxes</i>			<i>Dollars per box</i>			<i>1,000 dollars</i>		
FLORIDA EARLY, MIDSEASON, AND NAVEL ORANGES									
2001-02	6,424	121,576	128,000	4.65	2.79	2.88	29,872	339,197	369,069
2002-03	6,773	105,227	112,000	5.75	2.42	2.62	38,945	254,649	293,594
2003-04	5,615	120,385	126,000	4.65	2.09	2.20	26,110	251,605	277,715
2004-05	4,403	74,697	79,100	7.60	2.54	2.82	33,463	189,730	223,193
2005-06	4,896	70,104	75,000	6.20	4.41	4.53	30,355	309,159	339,514
FLORIDA EARLY AND MIDSEASON ORANGES (EXCLUDING NAVELS)									
2001-02	2,504	119,996	122,500	4.05	2.79	2.82	10,141	334,789	344,930
2002-03	2,891	103,709	106,600	3.75	2.46	2.49	10,841	255,124	265,965
2003-04	2,503	119,197	121,700	2.45	2.11	2.12	6,132	251,506	257,638
2004-05	2,386	74,214	76,600	3.60	2.55	2.58	8,590	189,246	197,836
2005-06	2,035	69,165	71,200	4.00	4.46	4.45	8,140	308,476	316,616
FLORIDA NAVEL ORANGES									
2001-02	3,920	1,580	5,500	5.15	1.80	4.19	20,188	2,844	23,032
2002-03	3,882	1,518	5,400	7.25	-1.02	4.93	28,145	-1,548	26,597
2003-04	3,112	1,188	4,300	6.45	-1.49	4.26	20,072	-1,770	18,302
2004-05	2,017	483	2,500	12.30	-1.28	9.68	24,809	-618	24,191
2005-06	2,861	939	3,800	7.70	-0.59	5.65	22,030	-554	21,476
FLORIDA LATE (VALENCIA) ORANGES									
2001-02	2,957	99,043	102,000	5.25	4.17	4.20	15,524	413,009	428,533
2002-03	2,940	88,060	91,000	5.30	3.80	3.85	15,582	334,628	350,210
2003-04	4,278	111,722	116,000	2.85	3.67	3.64	12,192	410,020	422,212
2004-05	2,994	67,706	70,700	5.80	4.17	4.24	17,365	282,334	299,699
2005-06	2,450	70,450	72,900	5.00	6.47	6.42	12,250	455,812	468,062
CALIFORNIA NAVEL AND MISCELLANEOUS ORANGES									
2001-02	27,900	4,100	32,000	12.45	-2.50	10.53	347,355	-10,250	337,105
2002-03	34,000	8,000	42,000	7.35	-2.01	5.57	249,900	-16,080	233,820
2003-04	34,300	5,200	39,500	9.80	-1.96	8.25	336,140	-10,192	325,948
2004-05	33,700	10,300	44,000	10.30	-2.02	7.42	347,110	-20,806	326,304
2005-06	31,600	13,900	45,500	10.80	-0.95	7.21	341,280	-13,205	328,075
CALIFORNIA VALENCIA ORANGES									
2001-02	16,350	3,150	19,500	6.43	-1.65	5.12	105,131	-5,198	99,933
2002-03	15,800	4,200	20,000	5.74	-2.10	4.09	90,692	-8,820	81,872
2003-04	10,200	800	11,000	11.04	-2.07	10.09	112,608	-1,656	110,952
2004-05	15,500	5,000	20,500	8.54	-2.14	5.94	132,370	-10,700	121,670
2005-06	9,700	2,300	12,000	11.14	-1.08	8.80	108,058	-2,484	105,574

^{1/} 2005-06 preliminary.

**GRAPEFRUIT: Utilization, season average on-tree price, and value by types, by states,
crop years 2001-02 through 2005-06 ^{1/}**

Crop year	Utilization of production			Price per box			Value of production		
	Fresh	Proc	Total	Fresh	Proc	Total	Fresh	Proc	Total
	<i>1,000 boxes</i>			<i>Dollars per box</i>			<i>1,000 dollars</i>		
UNITED STATES GRAPEFRUIT									
2001-02	26,547	32,113	58,660	5.43	0.44	2.64	145,752	13,363	159,115
2002-03	23,930	26,150	50,080	6.33	0.18	3.03	155,872	4,281	160,153
2003-04	25,315	27,225	52,540	7.23	0.46	3.66	184,193	11,950	196,143
2004-05	16,084	9,556	25,640	18.79	2.83	12.65	298,803	25,653	324,456
2005-06	15,514	15,086	30,600	13.87	5.39	9.53	213,334	79,677	293,011
FLORIDA GRAPEFRUIT									
2001-02	17,394	29,306	46,700	5.25	0.56	2.31	91,297	16,356	107,653
2002-03	15,589	23,111	38,700	5.63	0.29	2.44	87,711	6,807	94,518
2003-04	16,657	24,243	40,900	7.32	0.60	3.33	121,850	14,445	136,295
2004-05	7,419	5,381	12,800	19.51	5.13	13.47	144,765	27,600	172,365
2005-06	6,914	12,386	19,300	13.96	6.26	9.02	96,502	77,582	174,084
CALIFORNIA GRAPEFRUIT									
2001-02	5,100	800	5,900	7.13	-2.47	5.83	36,363	-1,976	34,387
2002-03	4,900	700	5,600	10.96	-2.52	9.28	53,704	-1,764	51,940
2003-04	5,100	700	5,800	8.85	-3.01	7.42	45,135	-2,107	43,028
2004-05	5,400	700	6,100	15.52	-3.08	13.39	83,808	-2,156	81,652
2005-06	5,300	700	6,000	11.88	-3.15	10.13	62,964	-2,205	60,759
TEXAS GRAPEFRUIT									
2001-02	3,900	2,000	5,900	4.45	-0.50	2.77	17,355	-1,000	16,355
2002-03	3,317	2,333	5,650	4.14	-0.32	2.30	13,732	-747	12,985
2003-04	3,418	2,282	5,700	4.84	-0.17	2.83	16,543	-388	16,155
2004-05	3,125	3,475	6,600	22.02	0.06	10.46	68,813	209	69,022
2005-06	3,200	2,000	5,200	16.50	2.15	10.98	52,800	4,300	57,100
ARIZONA GRAPEFRUIT									
2001-02	153	7	160	4.82	-2.48	4.50	737	-17	720
2002-03	124	6	130	5.85	-2.53	5.46	725	-15	710
2003-04	140	0	140	4.75	0.00	4.75	665	0	665
2004-05	140	0	140	10.12	0.00	10.12	1,417	0	1,417
2005-06	100	0	100	10.68	0.00	10.68	1,068	0	1,068

^{1/} 2005-06 preliminary.

^{2/} Excludes economic abandonment in 2000-01 of 2.0 million boxes of colored seedless.

**TANGERINES: Utilization, season average on-tree price, and value by types, by states,
crop years 2001-02 through 2005-06 ^{1/}**

Crop year	Utilization of production			Price per box			Value of production		
	Fresh	Proc	Total	Fresh	Proc	Total	Fresh	Proc	Total
	<i>1,000 boxes</i>			<i>Dollars per box</i>			<i>1,000 dollars</i>		
UNITED STATES TANGERINES									
2001-02	6,755	2,665	9,420	13.84	-0.57	9.59	95,029	-1,582	93,447
2002-03	6,741	1,989	8,730	13.48	-0.95	10.06	92,271	-1,957	90,284
2003-04	6,845	2,545	9,390	12.18	-1.53	8.36	84,150	-4,050	80,100
2004-05	6,117	1,633	7,750	16.68	-0.26	13.01	102,744	-710	102,034
2005-06	6,661	2,989	9,650	15.46	0.12	10.64	104,788	-344	104,444
FLORIDA ALL TANGERINES									
2001-02	4,214	2,386	6,600	12.50	-0.47	7.81	52,675	-1,121	51,554
2002-03	3,914	1,586	5,500	12.10	-0.72	8.40	47,359	-1,142	46,217
2003-04	4,440	2,060	6,500	11.50	-1.26	7.46	51,060	-2,596	48,464
2004-05	3,318	1,132	4,450	15.90	0.66	12.02	52,756	747	53,503
2005-06	3,608	1,892	5,500	13.60	1.50	9.44	49,069	2,838	51,907
FLORIDA EARLY TANGERINES ^{2/}									
2001-02	2,790	1,560	4,350	11.20	-0.70	6.93	31,248	-1,092	30,156
2002-03	2,110	890	3,000	12.20	-0.65	8.39	25,742	-579	25,163
2003-04	2,307	1,293	3,600	10.50	-1.61	6.15	24,224	-2,082	22,142
2004-05	1,814	636	2,450	14.00	-0.96	10.12	25,396	-611	24,785
2005-06	1,913	937	2,850	15.70	-0.42	10.40	30,034	-394	29,640
FLORIDA HONEY TANGERINES									
2001-02	1,424	826	2,250	15.20	0.04	9.61	21,645	33	21,612
2002-03	1,804	696	2,500	11.90	-0.82	8.36	21,468	-571	20,897
2003-04	2,133	767	2,900	12.70	-0.67	9.16	27,089	-514	26,575
2004-05	1,504	496	2,000	18.20	2.73	14.36	27,373	1,354	28,727
2005-06	1,695	955	2,650	11.30	3.39	8.45	19,154	3,237	22,391
CALIFORNIA TANGERINES									
2001-02	1,970	230	2,200	17.23	-1.65	15.26	33,943	-380	33,563
2002-03	2,450	350	2,800	15.54	-2.01	13.35	38,073	-704	37,369
2003-04	1,939	261	2,200	14.03	-2.74	12.04	27,204	-715	26,489
2004-05	2,477	423	2,900	18.40	-2.82	15.30	45,577	-1,193	44,384
2005-06	2,696	904	3,600	18.66	-2.90	13.25	50,307	-2,622	47,685
ARIZONA TANGERINES									
2001-02	571	49	620	14.73	-1.65	13.44	8,411	-81	8,330
2002-03	377	53	430	18.14	-2.66	15.58	6,839	-141	6,698
2003-04	466	224	690	12.63	-3.30	7.46	5,886	-739	5,147
2004-05	322	78	400	13.70	-3.38	10.37	4,411	-264	4,147
2005-06	357	193	550	15.16	-2.90	8.82	5,412	-560	4,852

^{1/} 2005-06 preliminary.

^{2/} Robinson, Fallglo, Sunburst, and Dancy varieties in 2001-02; Fallglo and Sunburst only beginning in 2002-03.

**OTHER CITRUS: Utilization, season average on-tree price, and value by types, by states,
crop years 2001-02 through 2005-06 ^{1/}**

Crop year	Utilization of production			Price per box			Value of production		
	Fresh	Proc	Total	Fresh	Proc	Total	Fresh	Proc	Total
	<i>1,000 boxes</i>			<i>Dollars per box</i>			<i>1,000 dollars</i>		
FLORIDA TANGELOS									
2001-02	696	1,454	2,150	6.10	0.73	2.47	4,246	1,061	5,307
2002-03	608	1,742	2,350	7.65	0.84	2.60	4,651	1,463	6,114
2003-04	545	455	1,000	13.85	-0.14	7.48	7,548	-64	7,484
2004-05	495	1,055	1,550	6.45	0.57	2.45	3,193	601	3,794
2005-06	547	853	1,400	12.50	0.79	5.37	6,838	674	7,512
FLORIDA K-EARLY CITRUS									
2001-02	6	24	30	4.40	0.40	1.20	26	10	36
2002-03 ^{2/}	--	--	--	--	--	--	--	--	--
2003-04	--	--	--	--	--	--	--	--	--
2004-05	--	--	--	--	--	--	--	--	--
2005-06	--	--	--	--	--	--	--	--	--
FLORIDA LIMES									
2001-02	125	25	150	8.15	-3.60	6.19	1,019	-90	929
2002-03 ^{2/}	--	--	--	--	--	--	--	--	--
2003-04	--	--	--	--	--	--	--	--	--
2004-05	--	--	--	--	--	--	--	--	--
2005-06	--	--	--	--	--	--	--	--	--
UNITED STATES LEMONS									
2001-02	14,422	6,678	21,100	18.45	-3.93	11.36	266,019	-26,253	239,766
2002-03	14,646	12,354	27,000	15.45	-4.04	6.53	226,315	-49,910	176,405
2003-04	14,208	6,792	21,000	14.19	-4.91	8.01	201,659	-33,349	168,310
2004-05	13,128	9,772	22,900	18.00	-5.03	8.17	236,279	-49,153	187,126
2005-06	17,339	7,461	24,800	17.46	-5.69	10.49	302,698	-42,427	260,271
CALIFORNIA LEMONS									
2001-02	12,520	5,780	18,300	18.63	-3.93	11.50	233,248	-22,715	210,533
2002-03	13,100	10,900	24,000	15.66	-4.04	6.66	203,836	-44,036	159,800
2003-04	12,200	5,800	18,000	14.90	-4.91	8.52	181,780	-28,478	153,302
2004-05	11,803	8,697	20,500	18.21	-5.03	8.35	214,933	-43,746	171,187
2005-06	15,172	5,828	21,000	18.32	-5.68	11.66	277,951	-33,103	244,848
ARIZONA LEMONS									
2001-02	1,902	898	2,800	17.23	-3.94	10.44	32,771	-3,538	29,233
2002-03	1,546	1,454	3,000	14.54	-4.04	5.54	22,479	-5,874	16,605
2003-04	2,008	992	3,000	9.90	-4.91	5.00	19,879	-4,871	15,008
2004-05	1,325	1,075	2,400	16.11	-5.03	6.64	21,346	-5,407	15,939
2005-06	2,167	1,633	3,800	11.42	-5.71	4.06	24,747	-9,324	15,423

^{1/} 2005-06 preliminary.

^{2/} Estimates discontinued.

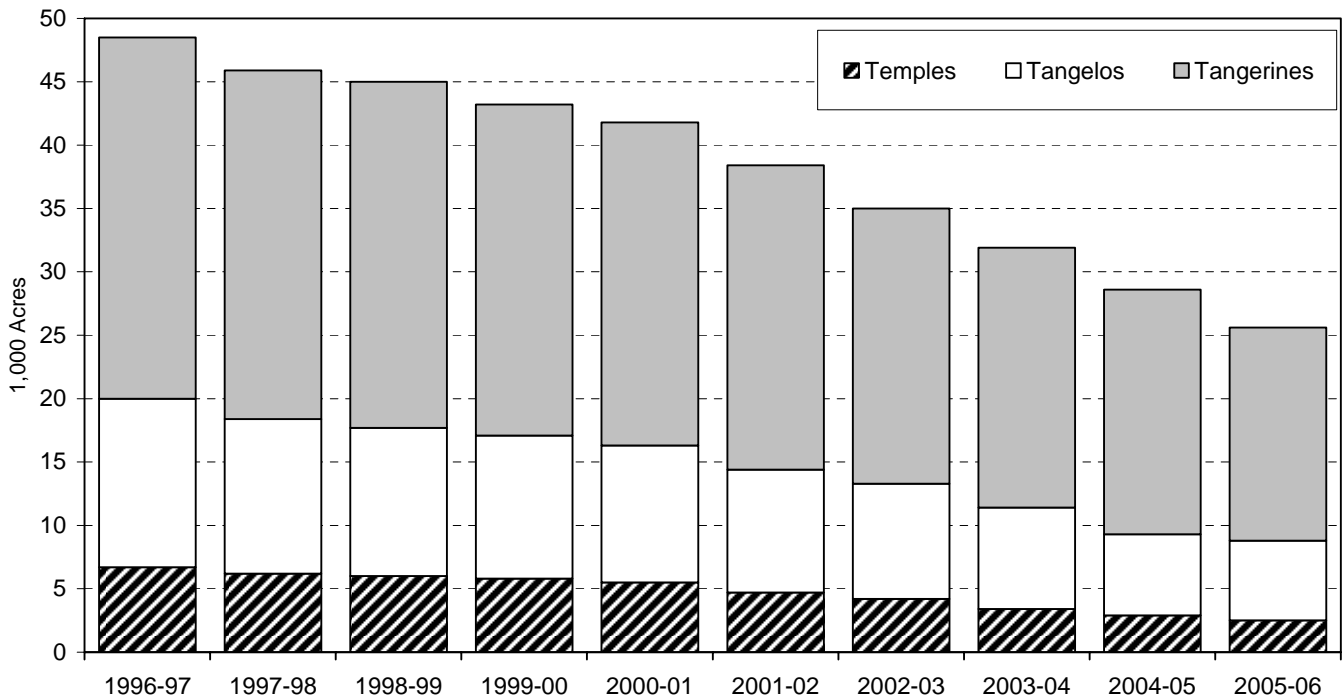
FLORIDA LEMONS: Bearing acreage, production, season average on tree prices, and value, crop years 1986 through 2005

Crop year ^{1/}	True Lemons		Meyer Lemons		All Lemons			
	Bearing acreage <i>1,000 acres</i>	Production <i>1,000 boxes</i>	Bearing acreage <i>1,000 acres</i>	Production <i>1,000 boxes</i>	Bearing acreage <i>1,000 acres</i>	Production <i>1,000 boxes</i>	Price per box <i>Dollars</i>	Value of production <i>1,000 dollars</i>
1986	1.3	560	0.1	60	1.4	620	2.60	1,594
1987	1.2	470	0.1	40	1.3	510	5.00	2,561
1988	1.1	433	0.1	47	1.2	480	5.30	2,548
1989	1.0	333	0.1	42	1.1	375	6.90	2,592
1990	0.9	210	0.1	40	1.0	250	6.80	1,697
1991	0.8	254	0.1	46	0.9	300	12.60	3,784
1992	0.6	215	0.1	40	0.7	255	6.15	1,565
1993	0.6	167	0.1	33	0.7	200	10.00	1,998
1994	0.6	188	0.1	32	0.7	220	7.60	1,677
1995	0.6	130	0.1	35	0.7	165	8.25	1,361
1996	0.7	170	0.1	25	0.8	195	10.30	2,006
1997	0.8	80	0.1	40	0.9	120	7.00	839
1998	0.9	155	0.1	80	1.0	235	6.45	1,516
1999	1.0	140	0.1	30	1.1	170	1.20	201
2000	0.9	240	0.1	25	1.0	265	3.50	921
2001	0.8	68	0.1	17	0.9	85	3.50	299
2002	0.7	150	0.1	5	0.8	155	13.30	2,061
2003 ^{2/}	--	--	--	--	--	--	--	--
2004	--	--	--	--	--	--	--	--
2005	--	--	--	--	--	--	--	--

^{1/} Crop year corresponds to calendar year.

^{2/} Estimates discontinued.

FLORIDA SPECIALTY FRUIT: Bearing acreage by variety, 1996-97 through 2005-06



**FLORIDA CITRUS: Monthly and season average on-tree price per box for
crop years 2001-02 through 2005-06 ^{1/}**

Crop year	Oct	Nov	Dec	Jan	Feb	Mar	Season average
-----------	-----	-----	-----	-----	-----	-----	----------------

Dollars

EARLY, MIDSEASON, AND NAVAL ORANGES

ALL METHODS OF SALE

2001-02	5.45	2.78	2.76	2.85	2.90	4.14	2.88
2002-03	5.03	2.54	2.58	2.54	2.61	--	2.62
2003-04	3.83	2.12	2.15	2.14	2.18	3.70	2.20
2004-05	--	3.59	2.69	2.65	2.76	3.62	2.82
2005-06	10.69	3.60	3.55	4.79	5.00	5.48	4.53

SALES FOR FRESH USE

2001-02	6.25	5.15	3.95	4.35	4.45	3.35	4.65
2002-03	7.95	5.85	5.85	3.75	3.65	--	5.75
2003-04	6.45	5.15	4.35	3.25	1.65	1.95	4.65
2004-05	--	8.60	8.50	6.40	4.60	3.10	7.60
2005-06	13.30	7.20	6.50	5.00	3.40	2.90	6.20

SALES FOR PROCESSING

2001-02	2.35	2.57	2.68	2.80	2.87	4.14	2.79
2002-03	1.68	2.29	2.37	2.50	2.58	--	2.42
2003-04	1.13	1.89	2.03	2.11	2.19	3.71	2.09
2004-05	--	2.04	2.32	2.52	2.71	3.63	2.54
2005-06	0.40	2.39	3.30	4.78	5.06	5.55	4.41

Crop year	Feb	Mar	Apr	May	Jun	Jul	Season average
-----------	-----	-----	-----	-----	-----	-----	----------------

Dollars

LATE (VALENCIA) ORANGES

ALL METHODS OF SALES

2001-02	--	4.15	4.17	4.24	4.24	--	4.20
2002-03	2.82	3.89	3.87	3.85	4.09	--	3.85
2003-04	2.21	3.57	3.68	3.67	3.88	--	3.64
2004-05	--	3.70	4.30	4.43	4.41	--	4.24
2005-06	--	5.76	6.22	6.88	6.76	5.74	6.42

SALES FOR FRESH USE

2001-02	--	5.45	4.25	5.05	6.35	--	5.25
2002-03	5.20	5.30	3.70	3.70	10.20	--	5.30
2003-04	2.95	2.65	2.35	2.25	4.55	--	2.85
2004-05	--	5.10	5.00	6.50	8.00	--	5.80
2005-06	--	3.20	5.30	6.10	5.60	4.40	5.00

SALES FOR PROCESSING

2001-02	--	4.09	4.17	4.22	4.16	--	4.17
2002-03	2.60	3.84	3.87	3.85	3.74	--	3.80
2003-04	2.09	3.61	3.72	3.71	3.85	--	3.67
2004-05	--	3.58	4.27	4.37	4.26	--	4.17
2005-06	--	5.90	6.25	6.90	6.80	5.80	6.47

^{1/} 2005-06 preliminary.

**FLORIDA CITRUS: Monthly and season average on-tree price per box for
crop years 2001-02 through 2005-06 ^{1/}**

Crop year	Oct	Nov	Dec	Jan	Feb	Mar	Apr	May	Jun	Season average
-----------	-----	-----	-----	-----	-----	-----	-----	-----	-----	----------------

Dollars

WHITE GRAPEFRUIT

ALL METHODS OF SALE

2001-02	--	4.36	2.78	2.83	2.05	1.71	1.44	0.78	--	1.96
2002-03	5.80	4.10	2.44	2.07	1.82	1.16	0.77	0.66	--	1.77
2003-04	6.44	3.89	3.31	2.50	1.91	1.41	0.90	0.70	--	1.94
2004-05	14.60	16.35	15.49	14.91	10.81	7.36	6.34	--	--	11.93
2005-06	--	6.09	10.25	11.82	10.53	8.87	7.80	0.06	--	9.22

SALES FOR FRESH USE

2001-02	--	7.74	5.84	6.34	6.34	6.74	5.94	4.04	--	6.54
2002-03	8.67	7.97	7.67	7.87	7.67	6.57	6.57	6.67	--	7.57
2003-04	10.10	7.40	7.00	6.90	7.00	8.10	8.10	5.80	--	7.50
2004-05	21.82	21.92	21.52	22.02	19.52	20.32	19.42	--	--	21.32
2005-06	--	11.29	16.69	17.39	17.09	16.79	11.29	9.69	--	16.09

SALES FOR PROCESSING

2001-02	--	0.79	0.98	0.97	1.01	0.96	0.82	0.69	--	0.91
2002-03	0.53	0.10	0.37	0.42	0.35	0.31	0.42	0.31	--	0.36
2003-04	0.57	0.58	0.70	0.43	0.36	0.51	0.61	0.46	--	0.50
2004-05	4.69	5.07	5.93	5.99	6.02	5.75	5.39	--	--	5.73
2005-06	--	4.38	6.08	8.48	8.48	7.48	7.68	-0.32	--	7.28

Crop year	Oct	Nov	Dec	Jan	Feb	Mar	Apr	May	Jun	Season average
-----------	-----	-----	-----	-----	-----	-----	-----	-----	-----	----------------

Dollars

COLORED GRAPEFRUIT

ALL METHODS OF SALE

2001-02	6.46	3.29	2.65	2.73	2.13	2.00	1.77	1.76	--	2.54
2002-03	5.27	3.46	2.78	2.67	2.49	2.44	2.11	1.79	--	2.93
2003-04	7.15	4.74	4.17	3.83	4.16	4.09	3.35	3.15	--	4.22
2004-05	15.55	16.17	14.17	14.81	13.67	12.85	12.48	10.82	--	14.02
2005-06	8.44	8.28	9.55	11.48	10.12	7.56	7.48	--	--	8.92

SALES FOR FRESH USE

2001-02	8.32	5.02	4.72	4.82	4.42	4.62	4.02	3.72	--	4.92
2002-03	6.83	4.93	4.43	4.33	4.73	5.33	5.03	5.63	--	5.13
2003-04	9.47	6.77	6.37	6.47	7.17	7.97	7.57	6.77	--	7.27
2004-05	19.31	20.01	18.11	19.31	18.81	19.11	19.91	16.31	--	19.11
2005-06	14.90	14.20	13.70	15.10	14.50	11.50	11.00	--	--	13.40

SALES FOR PROCESSING

2001-02	0.42	0.20	-0.38	0.25	0.40	0.18	0.07	0.05	--	0.17
2002-03	0.36	0.12	0.25	0.29	0.10	0.27	0.20	0.02	--	0.21
2003-04	0.61	0.73	0.56	0.72	0.60	0.73	0.83	0.67	--	0.70
2004-05	3.16	3.73	4.64	5.32	5.62	4.84	3.61	4.24	--	4.76
2005-06	3.06	3.86	5.26	7.26	6.76	5.46	5.36	--	--	5.56

^{1/} 2005-06 preliminary.

**FLORIDA CITRUS: Monthly and season average on-tree price per box for
crop years 2001-02 through 2005-06 ^{1/}**

Crop year	Nov	Dec	Jan	Feb	Mar	Season average
-----------	-----	-----	-----	-----	-----	----------------

Dollars

TANGELOS

ALL METHODS OF SALE

2001-02	2.30	3.23	1.77	2.59	--	2.47
2002-03	2.73	2.29	2.84	--	--	2.60
2003-04	7.78	7.61	9.00	3.26	--	7.48
2004-05	4.13	2.84	1.99	1.51	--	2.45
2005-06	8.43	7.66	4.81	2.70	1.00	5.37

SALES FOR FRESH USE

2001-02	4.40	5.90	5.40	21.40	--	6.10
2002-03	6.35	4.75	19.15	--	--	7.65
2003-04	12.35	11.35	24.35	24.35	--	13.85
2004-05	8.55	5.05	8.05	7.05	--	6.45
2005-06	12.40	10.70	15.90	15.90	--	12.50

SALES FOR PROCESSING

2001-02	-0.10	0.65	0.90	0.90	--	0.73
2002-03	0.20	0.90	0.95	--	--	0.84
2003-04	-0.35	-0.10	-0.10	-0.10	--	-0.14
2004-05	-0.30	0.30	0.50	1.10	--	0.57
2005-06	0.20	0.05	0.90	1.00	1.00	0.79

Crop year	Jan	Feb	Mar	Apr	Season average
-----------	-----	-----	-----	-----	----------------

Dollars

TEMPLES

ALL METHODS OF SALE

2001-02	4.12	1.89	1.16	1.11	2.19
2002-03	2.54	2.03	1.08	--	2.01
2003-04	2.64	0.45	0.62	0.47	1.07
2004-05	3.77	2.26	1.97	--	2.48
2005-06	5.98	3.52	1.99	1.80	3.16

SALES FOR FRESH USE

2001-02	6.30	4.30	1.50	1.30	4.90
2002-03	3.65	2.85	6.15	--	3.65
2003-04	5.25	1.35	3.35	3.35	3.65
2004-05	5.05	3.25	3.55	--	4.05
2005-06	8.40	5.40	4.60	--	6.60

SALES FOR PROCESSING

2001-02	1.40	1.20	1.10	1.10	1.19
2002-03	1.80	1.85	0.45	--	1.51
2003-04	0.00	0.15	0.40	0.40	0.24
2004-05	0.60	1.90	1.70	--	1.72
2005-06 ^{1/}	1.25	1.50	1.80	1.80	1.70

^{1/} 2005-06 preliminary.

**FLORIDA CITRUS: Monthly and season average on-tree price per box for
crop years 2001-02 through 2005-06 ^{1/}**

Crop year	Sep	Oct	Nov	Dec	Jan	Feb	Season average
<i>Dollars</i>							
EARLY TANGERINES ^{2/}							
ALL METHODS OF SALE							
2001-02	--	7.90	7.67	6.32	5.27	--	6.93
2002-03	--	7.66	9.07	8.17	--	--	8.39
2003-04	7.25	5.72	5.96	6.62	4.92	--	6.15
2004-05	--	11.06	9.84	10.42	5.83	--	10.12
2005-06	--	13.49	10.55	9.54	8.41	--	10.40
SALES FOR FRESH USE							
2001-02	--	10.50	12.70	10.30	11.60	--	11.20
2002-03	--	10.40	13.50	12.60	--	--	12.20
2003-04	10.00	9.50	10.70	10.70	12.10	--	10.50
2004-05	--	13.50	14.00	14.50	11.50	--	14.00
2005-06	--	18.10	16.20	14.10	16.10	--	15.70
SALES FOR PROCESSING							
2001-02	--	-0.69	-0.69	-0.72	-0.69	--	-0.70
2002-03	--	-1.44	-0.91	0.30	--	--	-0.65
2003-04	-2.20	-2.07	-1.61	-1.40	-1.30	--	-1.61
2004-05	--	-1.30	-1.17	-0.80	-0.30	--	-0.96
2005-06	--	-1.30	-0.62	-0.50	0.60	--	-0.42

Crop year	Dec	Jan	Feb	Mar	Apr	May	Season Average
<i>Dollars</i>							
HONEY TANGERINES							
ALL METHODS OF SALE							
2001-02	--	11.21	7.68	8.88	12.53	--	9.61
2002-03	--	10.05	6.73	7.22	7.71	12.13	8.36
2003-04	10.46	11.28	6.72	7.00	11.00	20.60	9.16
2004-05	--	16.24	12.25	12.96	16.24	--	14.36
2005-06	--	12.40	9.44	7.24	7.39	6.43	8.45
SALES FOR FRESH USE							
2001-02	--	17.30	12.30	14.30	19.30	--	15.20
2002-03	--	14.20	9.80	10.50	11.00	15.00	11.90
2003-04	16.00	15.00	9.60	10.00	15.00	23.30	12.70
2004-05	--	20.50	15.50	16.50	20.50	--	18.20
2005-06	--	16.40	12.40	9.40	10.00	8.60	11.30
SALES FOR PROCESSING							
2001-02	--	-0.69	0.18	0.18	0.18	--	-0.04
2002-03	--	-1.35	-0.45	-0.55	-0.75	-0.75	-0.82
2003-04	-1.10	-1.00	-0.70	-0.50	-0.60	1.40	-0.67
2004-05	--	1.60	3.50	2.80	2.90	--	2.73
2005-06	--	3.10	3.60	3.60	3.50	2.70	3.39

^{1/} 2005-06 preliminary.

^{2/} Robinson, Fallglo, Sunburst, and Dancy varieties in 2001-02. Fallglo and Sunburst only beginning in 2002-03.

FLORIDA CITRUS: Total trees by counties and types of fruit as of January 2006 Census

County	Round oranges			Grapefruit				Specialty fruit ^{2/}	All citrus
	Early, mid, and Navel	Late (Valencia)	All ^{1/}	Seedless		Seedy	All ^{1/}		
				White	Colored				
<i>1,000 trees</i>									
Brevard	249.4	220.7	473.6	13.8	22.3	0.6	36.7	43.2	553.5
Charlotte	446.6	1,000.2	1,446.8	10.6	120.4	0.0	131.0	130.8	1,708.6
Citrus	11.3	1.4	12.7	0.0	2.5	0.0	2.5	1.7	16.9
Collier	1,833.7	2,752.2	4,585.9	13.8	114.9	0.0	128.7	167.1	4,881.7
DeSoto	3,164.8	4,766.1	8,011.9	5.7	49.8	0.1	55.6	114.2	8,181.7
Glades	701.3	616.8	1,322.1	2.2	16.3	0.0	18.5	49.4	1,390.0
Hardee	3,390.1	1,798.0	5,307.8	11.0	41.2	1.3	56.2	147.5	5,511.5
Hendry	4,160.4	7,214.2	11,388.0	119.1	316.4	4.1	439.6	452.9	12,280.5
Hernando	92.3	2.2	95.9	0.1	1.0	0.0	1.1	9.6	106.6
Highlands	2,628.7	5,138.4	7,820.4	45.0	68.9	27.1	143.3	289.2	8,252.9
Hillsborough	1,108.4	391.1	1,516.2	4.3	8.2	2.5	15.0	97.7	1,628.9
Indian River	1,035.3	1,087.9	2,148.4	882.0	1,303.3	1.2	2,197.2	158.7	4,504.3
Lake	1,109.2	394.7	1,525.8	8.2	98.1	3.6	111.3	485.4	2,122.5
Lee	484.1	864.9	1,349.2	5.3	74.1	0.1	79.5	60.6	1,489.3
Manatee	1,242.8	1,057.6	2,344.0	13.9	19.2	8.7	41.8	45.2	2,431.0
Marion	94.4	20.9	115.8	0.5	3.5	0.0	4.0	26.3	146.1
Martin	1,480.3	3,184.2	4,671.2	128.9	103.4	0.0	241.5	111.6	5,024.3
Okeechobee	511.2	396.7	908.0	46.6	53.7	0.0	100.3	48.6	1,056.9
Orange	285.5	188.9	476.7	1.3	11.6	0.1	13.0	59.7	549.4
Osceola	774.5	462.9	1,238.9	61.2	44.4	0.6	106.2	65.9	1,411.0
Palm Beach	19.1	5.0	24.1	4.7	44.0	0.0	48.7	183.6	256.4
Pasco	817.6	240.8	1,073.9	2.2	7.9	0.1	10.2	56.8	1,140.9
Polk	4,216.8	4,551.2	9,011.3	107.7	201.3	29.6	342.0	869.2	10,222.5
Putnam	14.1	2.6	16.7	0.0	0.7	0.0	0.7	13.1	30.5
St. Lucie	998.4	2,651.8	3,692.9	689.6	1,871.6	0.0	2,584.5	360.2	6,637.6
Sarasota	39.7	85.5	125.3	7.8	36.2	0.3	44.3	18.1	187.7
Seminole	33.7	8.5	42.5	0.0	2.2	0.0	2.2	14.9	59.6
Volusia	77.3	20.6	99.4	3.5	11.5	0.3	15.3	6.2	120.9
Other Counties ^{3/}	3.7	0.0	4.0	0.1	0.2	0.2	0.5	0.8	5.3
Total	31,024.7	39,126.0	70,849.4	2,189.1	4,648.8	80.5	6,971.4	4,088.2	81,909.0

^{1/} Includes unidentified variety acreage.

^{2/} Temples, tangelos, tangerines, lemons, and other.

^{3/} Alachua and Pinellas counties.

FLORIDA CITRUS: Production by counties, areas, and types, 2005-06 season

County and area	Round Oranges			Grapefruit			Specialty fruit ^{1/}	All citrus
	Early, midseason, and Navel	Late (Valencia)	All	White	Colored	All		
<i>1,000 boxes</i>								
Brevard	295	190	485	34	67	101	40	626
Charlotte	579	1,284	1,863	14	210	224	159	2,246
Collier	2,317	3,381	5,698	17	221	238	198	6,134
DeSoto	8,132	11,901	20,033	22	84	106	290	20,429
Glades	843	802	1,645	3	36	39	56	1,740
Hardee	9,396	4,951	14,347	71	97	168	385	14,900
Hendry	5,309	9,352	14,661	147	520	667	424	15,752
Hernando	308	4	312	1	6	7	18	337
Highlands	8,620	13,197	21,817	639	510	1,149	853	23,819
Hillsborough	3,734	1,226	4,960	39	18	57	260	5,277
Indian River	1,134	938	2,072	1,999	3,280	5,279	160	7,511
Lake	3,773	835	4,608	95	637	732	1,077	6,417
Lee	554	1,031	1,585	10	144	154	67	1,806
Manatee	3,933	2,899	6,832	127	41	168	139	7,139
Marion	310	31	341	4	23	27	57	425
Martin	1,539	3,465	5,004	255	149	404	103	5,511
Okeechobee	647	527	1,174	47	116	163	51	1,388
Orange	1,090	457	1,547	12	81	93	151	1,791
Osceola	2,594	1,213	3,807	369	348	717	170	4,694
Palm Beach	29	7	36	12	119	131	154	321
Pasco	2,833	596	3,429	18	51	69	135	3,633
Polk	15,592	12,098	27,690	1,170	1,503	2,673	2,179	32,542
St. Lucie	925	2,241	3,166	1,344	4,405	5,749	349	9,264
Sarasota	99	223	322	39	60	99	56	477
Seminole	114	21	135	--	19	19	36	190
Volusia	209	23	232	10	31	41	12	285
Other ^{2/}	92	7	99	2	24	26	21	146
Total	75,000	72,900	147,900	6,500	12,800	19,300	7,600	174,800
Indian River	2,400	3,900	6,300	3,600	8,000	11,600	584	18,484
Northern	8,685	1,963	10,648	130	843	973	1,501	13,122
Central	26,615	26,437	53,052	2,170	2,357	4,527	3,182	60,761
Western	25,300	21,200	46,500	300	300	600	1,132	48,232
Southern	12,000	19,400	31,400	300	1,300	1,600	1,201	34,201
Total	75,000	72,900	147,900	6,500	12,800	19,300	7,600	174,800

^{1/} Temples, tangelos and tangerines.

^{2/} Alachua, Citrus, Pinellas, and Putnam counties.

FLORIDA CITRUS: Total acreage by counties and types of fruit as of January 2006 Census

County	Round oranges			Grapefruit				Specialty fruit ^{2/}	All citrus
	Early, mid, and Navel	Late (Valencia)	All ^{1/}	Seedless		Seedy	All ^{1/}		
				White	Colored				
<i>Acres</i>									
Brevard	2,212	2,035	4,289	158	239	7	404	387	5,080
Charlotte	3,264	6,916	10,180	95	918	0	1,013	690	11,883
Citrus	104	9	113	0	20	0	20	12	145
Collier	12,530	18,659	31,189	112	949	0	1,061	1,144	33,394
DeSoto	23,783	35,456	59,869	49	388	1	438	776	61,083
Glades	4,507	3,594	8,127	19	156	0	175	253	8,555
Hardee	27,898	14,557	43,487	106	335	15	477	1,120	45,084
Hendry	27,165	46,322	73,583	924	2,360	40	3,324	2,819	79,726
Hernando	793	13	827	1	10	0	11	83	921
Highlands	19,409	39,270	59,116	462	554	274	1,311	2,244	62,671
Hillsborough	10,251	3,460	13,848	52	102	26	180	755	14,783
Indian River	9,000	8,966	18,144	8,916	11,893	12	20,877	1,170	40,191
Lake	8,230	2,807	11,191	76	778	35	899	3,108	15,198
Lee	3,626	5,941	9,569	47	647	1	695	394	10,658
Manatee	9,766	7,707	17,749	137	212	84	433	366	18,548
Marion	795	168	967	5	36	0	41	177	1,185
Martin	10,598	21,492	32,138	1,123	909	0	2,113	787	35,038
Okeechobee	4,246	3,584	7,832	502	520	0	1,022	368	9,222
Orange	2,318	1,662	3,998	21	76	1	98	452	4,548
Osceola	6,660	3,860	10,532	582	479	6	1,067	571	12,170
Palm Beach	109	45	154	49	377	0	426	1,088	1,668
Pasco	5,966	1,555	7,645	21	75	1	97	448	8,190
Polk	35,783	38,535	76,430	1,158	2,054	322	3,564	6,404	86,398
Putnam	89	17	106	0	4	0	4	72	182
St. Lucie	7,257	18,084	25,672	6,193	16,672	0	23,073	2,642	51,387
Sarasota	337	732	1,070	72	342	3	417	165	1,652
Seminole	295	85	382	0	19	0	19	128	529
Volusia	743	237	993	46	107	3	156	82	1,231
Other Counties ^{3/}	37	1	41	1	1	2	4	8	53
Total	237,771	285,769	529,241	20,927	41,232	833	63,419	28,713	621,373

^{1/} Includes unidentified variety acreage.

^{2/} Temples, tangelos, tangerines, lemons, and other.

^{3/} Alachua and Pinellas counties.

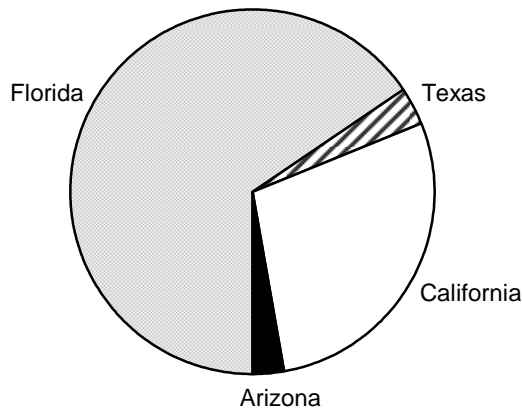
CITRUS: Bearing acreage by types and states, crop year 2005-06

	Arizona	California	Florida	Texas	U.S. Total
ORANGES					
Early, Midseason, and Navel	2,500	135,000	220,400	7,500 ^{1/}	365,400
Valencia	1,800	46,000	270,600	1,300	319,700
All Oranges	4,300	181,000	491,000	8,800	685,100
GRAPEFRUIT					
White Seedless	--	--	21,300	--	--
Colored Seedless	--	--	38,500	--	--
All Grapefruit	1,200	11,500	59,800	18,500	91,000
LEMONS	13,500	44,000	--	--	57,500
TANGELOS	--	--	6,300	--	6,300
TANGERINES	4,500 ^{2/}	14,000 ^{2/}	16,800	--	35,300
TEMPLES	--	--	2,500	--	2,500
TOTAL CITRUS	23,500	250,500	576,400	27,300	877,700

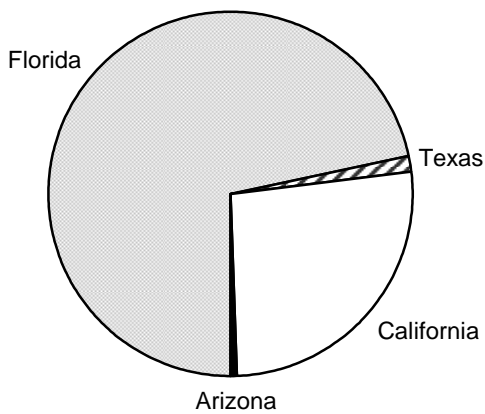
^{1/} Includes small quantities of tangerines.

^{2/} Includes tangelos and tangors.

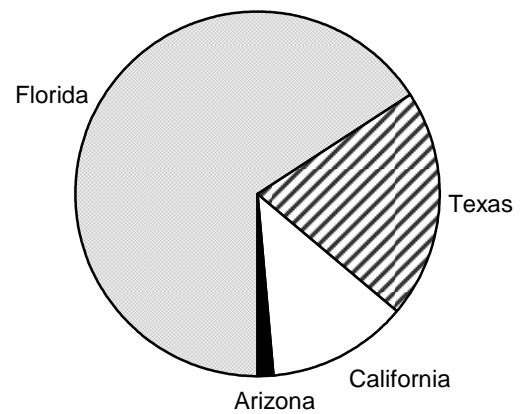
2005-06 Total Citrus Bearing Acreage



2005-06 Orange Bearing Acreage



2005-06 Grapefruit Bearing Acreage



BOXES OF FRUIT PER TREE

The Florida Agricultural Statistics Service conducts objective surveys to determine fruit per tree, average sizes, and droppage between August and maturity. These data are used to estimate production per tree for each type of citrus fruit, as shown in the following four tables.

The estimates of production per tree are based on official end-of-season production estimates and the number of bearing trees indicated by the citrus tree inventory surveys. The

averages of boxes per tree for age groups shown are calculated from estimates of fruit per tree in August, size at maturity, and drop between August and maturity.

Additionally, the boxes are subdivided by production areas. Estimated boxes by types and age groups are weighted averages of the indicated seasons. Small sample sizes in some age/area cells and rounding may contribute to inconsistent averages.

FLORIDA CITRUS: Estimated boxes of fruit per tree by age groups and production areas, 2001-02 through 2005-06

Fruit type and season	Area	Age of trees					Average ^{1/}
		3 – 5 years	6 – 8 years	9 – 13 years	14 – 23 years	24 years and older	

--- Boxes per tree ---

EARLY, MIDSEASON, AND NAVEL ORANGES:

2001-02	State	1.4	1.8	3.0	4.2	5.2	3.50
	Indian River	0.8	1.4	1.8	3.0	3.5	2.44
	Northern & Central	0.9	2.2	3.4	4.9	6.5	3.95
	Western	2.2	1.7	3.2	4.7	5.6	4.10
	Southern	1.2	1.6	2.8	3.3	4.2	2.82
2002-03	State	0.7	1.8	2.7	3.8	4.3	3.08
	Indian River	0.5	1.3	1.8	2.2	2.5	1.92
	Northern & Central	0.7	2.1	3.1	4.2	5.8	3.57
	Western	0.6	1.4	2.5	4.0	4.6	3.31
	Southern	0.8	2.0	2.6	3.5	3.4	2.74
2003-04	State	1.8	1.9	3.2	4.1	5.3	3.66
	Indian River	0.7	1.3	1.7	2.4	3.5	2.18
	Northern & Central	2.7	2.6	3.8	4.7	7.3	4.39
	Western	2.0	1.6	3.7	4.7	5.3	4.21
	Southern	1.6	1.6	2.5	3.3	4.4	2.86
2004-05 ^{2/}	State	1.2	1.7	2.2	2.9	2.8	2.43
	Indian River	0.7	0.6	0.6	0.9	1.0	0.79
	Northern & Central	2.2	1.7	2.3	2.9	3.2	2.63
	Western	1.0	1.2	2.0	2.5	2.8	2.17
	Southern	1.0	2.7	2.5	3.5	3.9	2.89
2005-06 ^{3/}	State	1.8	1.8	2.0	2.8	3.7	2.60
	Indian River	0.7	0.6	0.4	1.4	1.5	1.03
	Northern & Central	4.6	2.6	2.7	3.7	5.7	3.74
	Western	1.3	1.6	2.9	3.6	4.2	3.12
	Southern	0.5	1.5	0.8	1.6	1.4	1.34
Average	State	1.38	1.80	2.74	3.51	4.36	3.08
	Indian River	0.67	1.12	1.41	2.08	2.51	1.78
	Northern & Central	2.26	2.25	3.16	3.98	5.71	3.66
	Western	1.34	1.55	2.88	3.93	4.64	3.42
	Southern	1.05	1.86	2.48	2.97	3.57	2.57

^{1/} Average weighted by bearing trees.

^{2/} Hurricane Charlie affected production in the Central and Western growing areas. Hurricanes Jeanne and Francis affected production in all areas except the Southern area.

^{3/} Hurricane Wilma affected production in the Indian River and Southern areas.

**FLORIDA CITRUS: Estimated boxes of fruit per tree by age groups and production areas,
2001-02 through 2005-06**

Fruit type and season	Area	Age of trees					Average ^{1/}
		3 – 5 years	6 – 8 years	9 – 13 years	14 – 23 years	24 years and older	
--- Boxes per tree ---							
LATE (VALENCIA) ORANGES:							
2001-02	State	0.9	1.7	2.4	2.8	4.5	2.49
	Indian River	0.5	1.4	1.5	2.3	2.8	1.80
	Northern & Central	0.9	1.5	2.6	3.6	5.5	2.90
	Western	0.8	2.6	3.2	3.3	4.7	3.04
	Southern	1.1	1.5	2.1	2.4	4.4	2.16
2002-03	State	1.0	1.6	1.9	2.6	4.0	2.18
	Indian River	0.8	0.9	1.6	1.7	2.0	1.55
	Northern & Central	1.2	1.6	2.0	3.3	5.4	2.64
	Western	1.3	2.4	2.3	2.7	4.1	2.52
	Southern	0.8	1.4	1.7	2.4	3.3	1.89
2003-04	State	1.7	2.1	2.5	3.0	5.1	2.83
	Indian River	1.6	1.1	1.8	2.2	3.5	2.07
	Northern & Central	1.4	2.3	2.8	4.0	6.5	3.40
	Western	2.7	2.3	3.4	3.3	4.7	3.38
	Southern	1.0	2.1	2.3	2.5	4.8	2.40
2004-05 ^{2/}	State	1.1	1.2	1.7	2.0	2.1	1.74
	Indian River	0.4	0.4	0.6	1.1	0.8	0.78
	Northern & Central	1.8	1.6	1.9	2.5	2.6	2.14
	Western	1.3	1.3	1.8	1.7	2.3	1.68
	Southern	0.8	1.1	1.7	2.2	2.2	1.79
2005-06 ^{3/}	State	0.8	1.8	1.8	2.1	3.0	1.96
	Indian River	0.2	0.3	0.6	1.3	0.9	0.87
	Northern & Central	0.7	2.0	2.6	3.0	4.0	2.72
	Western	2.4	2.4	2.4	2.7	4.5	2.82
	Southern	0.3	1.3	1.4	1.4	1.5	1.32
Average	State	1.11	1.66	2.10	2.42	3.82	2.25
	Indian River	0.67	0.91	1.35	1.65	2.12	1.44
	Northern & Central	1.21	1.79	2.36	3.19	4.82	2.76
	Western	1.60	2.16	2.69	2.67	4.11	2.69
	Southern	0.81	1.48	1.92	2.09	3.28	1.92

^{1/} Average weighted by bearing trees.

^{2/} Hurricane Charlie affected production in the Central and Western growing areas. Hurricanes Jeanne and Francis affected production in all areas except the Southern area.

^{3/} Hurricane Wilma affected production in the Indian River and Southern areas.

**FLORIDA CITRUS: Estimated boxes of fruit per tree by age groups and production areas,
2001-02 through 2005-06**

Fruit type and season	Area	Age of trees					Average ^{1/}
		3 – 5 years	6 – 8 years	9 – 13 years	14 – 23 years	24 years and older	
- - - Boxes per tree - - -							
WHITE GRAPEFRUIT:							
2001-02	State	1.3	3.3	3.6	7.0	5.8	4.56
	Indian River	1.2	3.1	3.4	5.2	5.5	4.15
	Northern & Central	1.3	3.1	4.2	11.8	10.5	7.31
	Western	4.0	3.1	0.6	3.0	5.0	3.73
	Southern	1.5	4.4	4.2	6.1	5.1	4.64
2002-03	State	1.9	3.0	3.2	4.8	5.3	4.11
	Indian River	1.3	2.4	3.2	3.7	4.8	3.64
	Northern & Central	6.3	6.0	3.5	5.9	10.2	6.50
	Western	4.0	5.7	3.3	6.2	4.8	4.90
	Southern	8.4	6.4	3.1	6.2	4.6	4.20
2003-04	State	2.5	3.5	3.5	4.4	6.9	4.90
	Indian River	1.5	3.3	3.7	3.4	7.0	4.75
	Northern & Central	8.2	6.8	4.9	9.4	10.3	8.11
	Western	2.0	3.4	0.4	1.9	5.6	3.57
	Southern	5.7	1.9	2.1	2.8	4.6	3.23
2004-05 ^{2/}	State	1.0	0.8	1.1	1.4	1.3	1.25
	Indian River	0.6	0.6	0.6	0.4	0.8	0.61
	Northern & Central	3.7	1.9	3.7	3.7	3.7	3.63
	Western	--	--	2.1	2.2	1.7	1.96
	Southern	2.7	3.3	1.1	4.3	2.2	2.54
2005-06 ^{3/}	State	1.9	2.5	3.0	2.3	3.8	2.94
	Indian River	1.0	1.5	2.5	1.9	2.8	2.20
	Northern & Central	7.9	7.8	9.1	5.7	11.9	8.21
	Western	4.8	--	3.7	3.6	7.4	5.46
	Southern	1.2	4.8	1.8	1.0	0.9	1.22
Average	State	1.63	2.83	3.10	3.29	5.00	3.75
	Indian River	1.16	2.43	2.99	2.18	4.55	3.28
	Northern & Central	5.10	4.75	4.39	6.86	9.48	6.76
	Western	4.14	4.23	1.91	3.48	4.94	4.05
	Southern	3.21	4.50	2.80	3.34	4.12	3.50

^{1/} Average weighted by bearing trees.

^{2/} Hurricane Charlie affected production in the Central and Western growing areas. Hurricanes Jeanne and Francis affected production in all areas except the Southern area.

^{3/} Hurricane Wilma affected production in the Indian River and Southern areas.

**FLORIDA CITRUS: Estimated boxes of fruit per tree by age groups and production areas,
2001-02 through 2005-06**

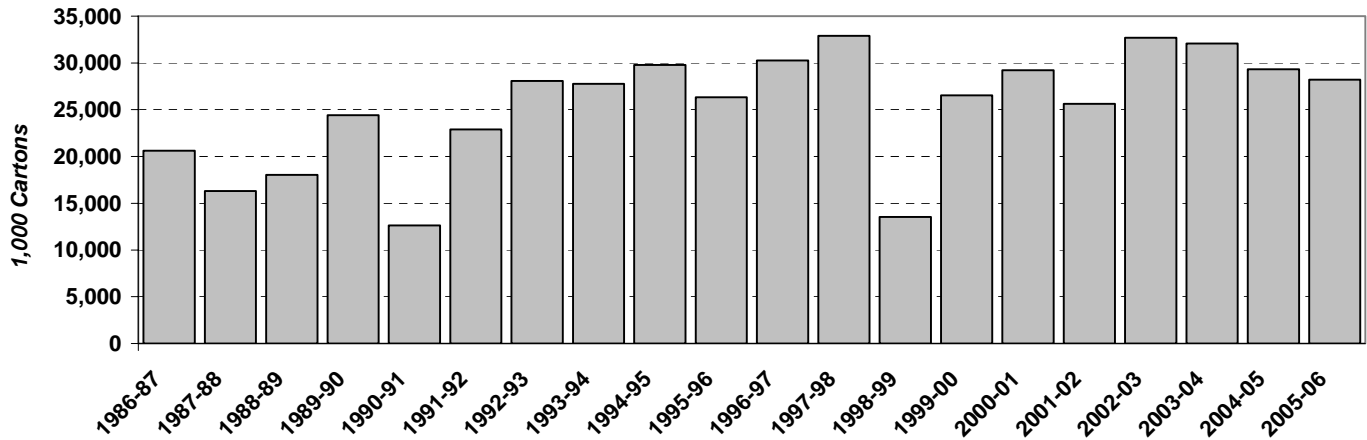
Fruit type and season	Area	Age of trees					Average ^{1/}
		3 – 5 years	6 – 8 years	9 – 13 years	14 – 23 years	24 years and older	
- - - Boxes per tree - - -							
COLORED GRAPEFRUIT:							
2001-02	State	2.0	2.3	3.9	4.7	5.2	4.13
	Indian River	2.1	1.9	3.6	4.8	5.2	4.06
	Northern & Central	1.7	3.6	4.8	7.2	6.5	5.14
	Western	0.8	2.4	3.9	0.6	5.4	3.11
	Southern	1.7	3.4	4.3	3.6	5.2	4.07
2002-03	State	1.6	1.8	3.0	4.0	4.8	3.54
	Indian River	1.0	1.7	2.4	3.3	4.3	3.09
	Northern & Central	1.3	1.1	3.1	8.2	9.8	5.19
	Western	4.8	1.4	3.6	5.8	9.3	4.76
	Southern	2.4	4.0	4.4	4.2	6.4	4.32
2003-04	State	2.9	3.5	3.6	4.6	6.0	4.37
	Indian River	1.1	3.4	3.0	4.5	5.7	4.20
	Northern & Central	5.7	4.0	5.9	5.0	8.5	5.70
	Western	3.6	3.3	3.4	2.5	12.8	4.17
	Southern	5.7	4.3	3.8	5.1	6.3	4.39
2004-05 ^{2/}	State	0.8	2.0	2.2	1.9	1.5	1.85
	Indian River	0.9	1.8	0.9	1.0	1.2	1.04
	Northern & Central	0.9	2.3	3.5	3.1	1.9	3.07
	Western	1.1	1.0	0.9	0.9	3.4	1.16
	Southern	0.6	2.5	3.3	7.1	9.1	4.34
2005-06 ^{3/}	State	0.3	1.2	2.9	3.1	3.8	2.96
	Indian River	0.1	1.4	2.4	2.7	3.4	2.62
	Northern & Central	1.6	3.0	7.5	6.9	12.5	7.32
	Western	2.1	1.5	0.8	2.6	2.1	2.03
	Southern	0.2	0.5	1.9	2.1	4.3	1.89
Average	State	1.48	2.20	3.27	3.59	4.40	3.46
	Indian River	1.02	2.00	2.69	3.20	4.09	3.11
	Northern & Central	2.06	3.15	4.60	5.88	7.96	5.24
	Western	1.90	1.98	3.06	2.52	6.93	3.14
	Southern	2.55	2.64	3.83	4.35	6.05	3.93

^{1/} Average weighted by bearing trees.

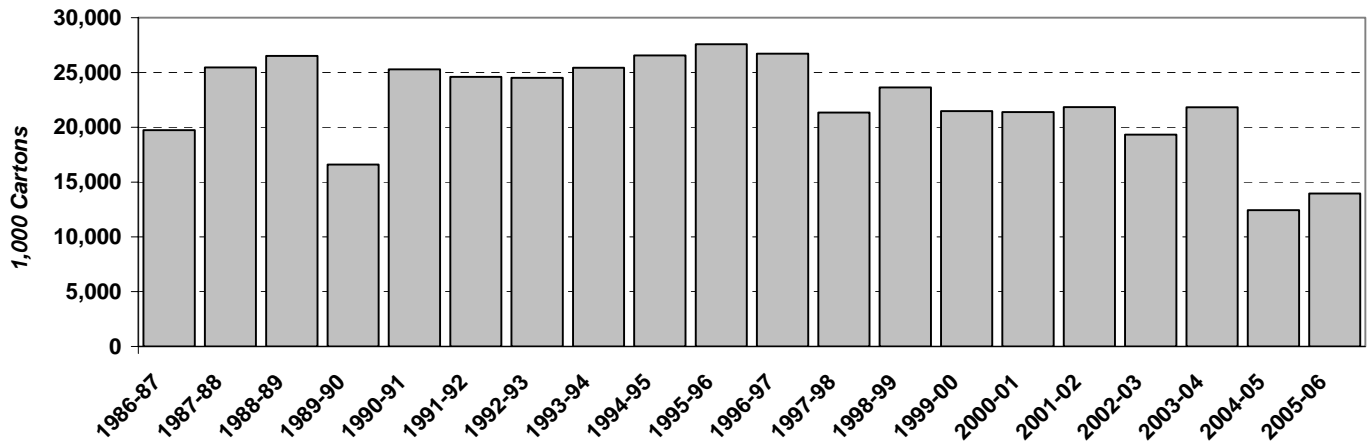
^{2/} Hurricane Charlie affected production in the Central and Western growing areas. Hurricanes Jeanne and Francis affected production in all areas except the Southern area.

^{3/} Hurricane Wilma affected production in the Indian River and Southern areas.

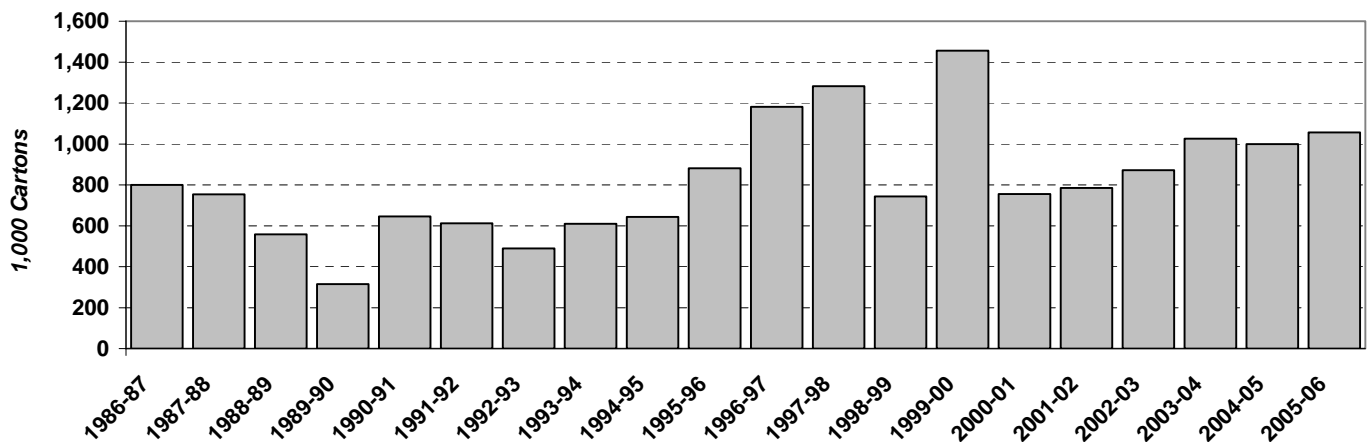
**U. S. Fresh Orange Exports by Season,
1986-87 through 2005-06**



**U. S. Fresh Grapefruit Exports by Season,
1986-87 through 2005-06**



**U. S. Fresh Tangerine Exports by Season,
1986-87 through 2005-06**



U. S. CITRUS: Fresh exports to selected countries, principal types, and months,
crop year 2005-06

Country	Oct	Nov	Dec	Jan	Feb	Mar	Apr	May	Jun	Jul	Aug	Sep	Total
<i>1,000 cartons</i>													
ORANGES ^{1/}													
Canada	94	490	893	1,235	1,249	1,385	1,111	966	638	167	102	76	8,406
Japan	6	67	241	452	603	760	744	862	733	87	22	7	4,584
Hong Kong	189	63	233	295	310	520	753	1,218	382	114	93	119	4,289
Republic of Korea	2	59	248	423	1,044	1,207	493	210	54	--	--	2	3,742
Peoples Republic of China	115	71	176	114	238	226	209	311	149	54	74	66	1,803
Malaysia	60	20	99	78	209	317	304	240	139	42	23	12	1,543
Mexico	105	103	90	110	98	116	122	101	93	63	49	38	1,088
Singapore	22	12	49	47	82	179	186	139	69	41	31	12	869
Taiwan	--	2	8	2	24	63	104	212	116	29	5	--	565
Australia ^{2/}	--	25	131	120	121	87	51	--	--	2	--	--	537
New Zealand ^{2/}	--	4	28	20	28	41	21	7	2	--	--	--	151
Philippines	1	2	4	14	8	21	26	25	22	1	--	--	124
Indonesia	--	--	2	7	11	16	24	37	20	2	--	--	119
United Arab Emirates	--	--	--	--	7	19	8	9	5	13	1	2	64
Other	7	6	14	23	48	48	54	54	19	15	22	17	327
Total	601	924	2,216	2,940	4,080	5,005	4,210	4,391	2,441	630	422	351	28,211
GRAPEFRUIT													
Japan	49	418	588	1,083	1,190	1,165	440	452	252	183	59	18	5,897
Republic of Korea	10	25	235	375	642	566	257	224	88	33	15	14	2,484
Canada	91	199	208	290	220	269	231	171	114	74	60	88	2,015
France ^{2/}	6	101	163	244	191	155	18	--	--	--	--	--	878
Netherlands	46	156	163	217	114	87	18	--	5	1	--	--	807
New Zealand ^{2/}	--	10	99	44	111	88	44	15	2	--	--	1	414
Belgium-Luxembourg ^{2/}	9	151	26	27	26	20	4	--	--	--	--	--	263
United Kingdom	--	26	35	45	74	56	22	--	--	--	3	--	261
Taiwan	20	5	5	5	23	67	69	12	9	5	13	6	239
Australia ^{2/}	4	10	46	58	32	9	--	--	--	--	--	--	159
Germany ^{2/}	--	6	34	49	40	26	2	--	--	--	--	--	157
Hong Kong	4	7	7	5	6	5	3	2	1	20	1	1	62
Denmark ^{2/}	--	2	13	10	11	11	--	--	--	--	--	--	47
Switzerland ^{2/}	--	3	11	7	10	9	2	--	--	--	--	--	42
Mexico	1	--	3	1	--	--	--	3	6	6	9	8	37
Peoples Republic of China	--	5	18	--	1	--	6	--	1	--	1	2	34
Sweden	--	1	3	9	8	12	--	--	--	--	--	--	33
Malaysia	--	--	7	3	1	8	4	8	--	--	--	--	31
Poland	--	1	1	5	6	11	1	--	--	--	--	--	25
Finland	--	1	7	8	5	3	--	--	--	--	--	--	24
Other	3	3	7	4	9	12	5	3	5	3	1	1	56
Total	243	1,130	1,679	2,489	2,720	2,579	1,126	890	483	325	162	139	13,965
TANGERINES ^{3/}													
Canada	2	48	113	121	108	145	108	33	4	3	1	--	686
Japan	--	1	1	7	100	111	6	2	--	--	--	2	230
Republic of Korea	--	4	13	13	6	6	12	7	--	--	--	--	61
Australia ^{2/}	--	--	--	7	22	3	--	--	--	--	--	--	32
Taiwan	--	--	--	--	9	--	1	--	--	--	--	--	10
Mexico	--	--	1	--	--	2	3	1	--	--	--	1	8
Barbados	--	--	--	1	1	1	1	3	1	--	--	--	8
Other	--	--	4	--	3	13	1	--	--	--	--	--	21
Total	2	53	132	149	249	281	132	46	5	3	1	3	1,056

^{1/} Includes Temples.

^{2/} Denotes a country that is a summarization of its component countries.

^{3/} Includes Mandarins.

SOURCE: See Page 47 Data Sources, Item 5.

FLORIDA CITRUS: Certified citrus exports by weeks, crop year 2005-06

Week ended	Oranges		Grapefruit		Temples	Tangelos	Tangerines	Total exports	
	Navel	Other	White	Colored					
<i>1,000 cartons</i>									
Sep	30	--	--	3	3	--	--	--	6
Oct	9	--	1	22	9	--	--	1	33
	16	--	1	4	3	--	--	2	10
	23	--	2	22	22	--	--	5	51
	30	--	--	15	18	--	--	1	34
Nov	6	4	5	23	19	--	--	2	53
	13	2	6	37	124	--	--	4	173
	20	35	11	79	229	--	1	9	364
	27	37	10	52	169	--	1	16	285
Dec	4	37	13	23	150	--	--	24	247
	11	14	9	61	173	--	--	23	280
	18	16	6	48	159	--	--	18	247
	25	9	4	106	227	--	--	17	363
Jan	1	3	5	83	184	--	--	13	288
	8	5	8	142	267	--	--	13	435
	15	7	10	248	278	--	--	12	555
	22	8	7	175	284	--	2	21	497
	29	9	8	170	246	--	--	18	451
Feb	5	11	10	115	311	--	--	18	465
	12	5	12	74	262	2	--	20	375
	19	2	15	82	310	1	--	23	433
	26	--	14	128	318	1	--	15	476
Mar	5	--	16	122	316	--	--	13	467
	12	--	17	95	382	--	--	18	512
	19	--	15	74	292	--	--	21	402
	26	--	18	99	231	--	--	20	368
Apr	2	--	14	41	220	--	--	23	298
	9	--	23	12	140	--	--	26	201
	16	--	28	1	98	--	--	17	144
	23	--	24	1	42	--	--	13	80
	30	--	26	--	18	--	--	17	61
May	7	--	28	--	8	--	--	13	49
	14	--	19	--	4	--	--	5	28
	21	--	22	--	4	--	--	5	31
	28	--	17	--	2	--	--	4	23
Jun	4	--	15	--	3	--	--	2	20
	11	--	11	--	2	--	--	--	13
	18	--	7	--	--	--	--	--	7
	25	--	6	--	--	--	--	--	6
	30	--	8	--	--	--	--	--	8
Jul Total	--	9	--	--	--	--	--	9	
Total	204	480	2,157	5,527	4	4	472	8,848	

SOURCE: See Page 47, Data Sources, Item 6.

**FLORIDA CITRUS: Certified citrus exports,
crop years 1996-97 through 2005-06**

Crop year	Oranges			Grapefruit			Specialty fruit ^{1/}			Grand Total
	Commer- cial	Govern- ment	Total	Commer- cial	Govern- ment	Total	Commer- cial	Govern- ment	Total	
<i>1,000 cartons</i>										
1996-97	1,737	--	1,737	25,585	--	25,585	525	--	525	27,847
1997-98	1,441	--	1,441	21,853	--	21,853	493	--	493	23,787
1998-99	2,064	--	2,064	22,126	--	22,126	527	--	527	24,717
1999-00	1,228	--	1,228	20,728	--	20,728	580	--	580	22,536
2000-01	1,495	--	1,495	20,248	--	20,248	540	--	540	22,283
2001-02	1,166	--	1,166	20,680	--	20,680	503	--	503	22,349
2002-03	1,028	--	1,028	18,334	--	18,334	519	--	519	19,881
2003-04	1,404	--	1,404	21,354	--	21,354	658	--	658	23,416
2004-05	992	--	992	8,522	--	8,522	430	--	430	9,944
2005-06	684	--	684	7,684	--	7,684	480	--	480	8,848

^{1/} Includes Temples, tangelos, and tangerines.

SOURCE: See Page 47, Data Sources, Item 6.

**FLORIDA CITRUS: Fresh exports,
crop years 2004-05 and 2005-06**

Destination	Grapefruit		Oranges ^{1/}		Tangerines		Total	
	2004-05	2005-06	2004-05	2005-06	2004-05	2005-06	2004-05	2005-06
<i>1,000 cartons</i>								
Japan	4,833	4,557	1	--	12	6	4,846	4,563
Canada	769	772	583	544	330	386	1,682	1,702
Belgium	1,050	1,233	49	6	--	--	1,099	1,239
Holland	779	282	127	--	--	--	906	282
Taiwan	31	146	199	119	--	11	230	276
England	148	198	2	--	--	--	150	198
France	527	174	15	--	--	--	542	174
Germany	135	91	--	--	--	--	135	91
Puerto Rico	3	4	2	4	74	68	79	76
Korea, South	64	58	--	--	--	--	64	58
United Kingdom	22	43	--	--	--	--	22	43
Sweden	64	32	--	--	--	--	64	32
Denmark	21	31	1	--	--	--	22	31
United Arab	13	4	20	17	--	--	33	21
Finland	30	19	--	--	--	--	30	19
Hong Kong	5	14	5	--	--	--	10	14
Norway	6	11	--	--	--	--	6	11
China	10	8	--	--	--	--	10	8
Singapore	9	6	--	--	--	--	9	6
Barbados	--	--	--	2	--	1	--	3
Russia	--	1	--	--	--	--	--	1
Italy	3	--	--	--	--	--	3	--
Bahama Islands	--	--	2	--	--	--	2	--
Total	8,522	7,684	1,006	692	416	472	9,944	8,848

^{1/} Includes Temples and tangelos.

SOURCE: See Page 47, Data Sources, Item 6.

FLORIDA CITRUS: Boxes of fruit processed by weeks, crop years 2004-05 and 2005-06 ^{1/}

Week ended 2005-06	Oranges		Grapefruit		Temple	
	2004-05	2005-06	2004-05	2005-06	2004-05	2005-06
	<i>1,000 boxes</i>					
Aug Total	--	--	--	--	--	--
Sep						
4	--	--	--	--	--	--
11	--	--	--	--	--	--
18	--	--	2	--	--	--
25	--	--	1	--	--	--
Oct						
2	--	4	14	--	--	--
9	10	6	27	--	--	--
16	20	9	20	--	--	--
23	44	48	21	54	--	--
30	69	78	47	187	--	--
Nov						
6	98	108	88	454	--	--
13	153	667	103	344	--	--
20	1,405	956	84	396	--	--
27	1,705	652	88	185	--	--
Dec						
4	4,554	2,897	96	266	--	--
11	4,775	4,089	115	324	--	--
18	5,192	4,526	176	323	--	--
25	3,986	3,419	153	254	--	--
Jan						
1	4,940	4,793	122	202	1	--
8	6,512	4,852	133	279	5	2
15	5,639	6,166	233	417	9	12
22	6,117	5,841	226	405	12	16
29	5,726	5,479	243	446	11	15
Feb						
5	6,045	4,420	258	498	26	17
12	5,540	5,106	284	434	80	14
19	4,846	5,021	304	561	87	30
26	3,758	4,391	314	583	67	27
Mar						
5	3,017	3,383	303	671	77	33
12	2,543	3,511	309	714	27	53
19	2,767	3,141	317	848	9	144
26	3,919	3,837	260	935	10	96
Apr						
2	5,277	4,827	257	829	10	14
9	5,484	5,141	218	611	4	5
16	6,072	4,996	170	511	--	5
23	6,135	5,547	171	279	--	4
30	5,634	5,396	54	139	1	3
May						
7	5,182	5,284	50	84	--	1
14	5,371	4,884	50	68	--	--
21	5,249	4,539	9	2	--	--
28	4,270	4,739	6	3	--	--
Jun						
4	1,431	4,013	12	7	1	--
11	2,890	3,662	2	5	--	--
18	2,439	2,196	--	--	--	--
25	1,498	2,676	5	32	--	--
30	--	1,633	--	6	--	--
Jul Total	1,807	3,319	20	16	--	--
Remainder	284	306	16	14	--	--
Total	142,403	140,554	5,381	12,386	437	491

^{1/} 2005-06 Preliminary.

SOURCE: See Page 47, Data Sources, Item 6

FLORIDA CITRUS: Boxes of fruit processed by weeks, crop years 2004-05 and 2005-06 ^{1/}

Week ended 2005-06	Tangelos		Early Tangerines ^{2/}		Honey Tangerines	
	2004-05	2005-06	2004-05	2005-06	2004-05	2005-06
<i>1,000 boxes</i>						
Aug Total	--	--	--	--	--	--
Sep						
4	--	--	--	--	--	--
11	--	--	--	--	--	--
18	--	--	--	--	--	--
25	--	--	--	--	--	--
Oct						
2	--	--	--	--	--	--
9			7	12		
16	--	--	31	16	--	--
23	--	--	22	47	--	--
30	1	--	24	29	--	--
Nov						
6	1	--	30	42	--	--
13	7	3	73	52	--	--
20	47	16	76	84	--	--
27	27	19	43	78	--	--
Dec						
4	61	31	70	80	--	--
11	56	39	60	83	--	4
18	44	29	71	90	--	7
25	36	12	36	87	1	--
Jan						
1	62	16	32	58	7	5
8	86	54	33	51	17	10
15	86	95	13	50	31	19
22	99	88	6	33	29	48
29	104	97	4	15	30	41
Feb						
5	85	65	1	7	28	37
12	73	76	2	6	37	37
19	54	93	1	5	36	33
26	46	63	1	3	33	64
Mar						
5	48	43	--	--	35	67
12	15	7	--	1	37	43
19	13	3	--	1	35	49
26	4	1	--	--	32	63
Apr						
2	--	3	--	2	24	71
9	--	--	--	--	26	65
16	--	--	--	--	18	68
23	--	--	--	--	18	51
30	--	--	--	4	11	57
May						
7	--	--	--	--	9	49
14	--	--	--	--	2	41
21	--	--	--	--	--	21
28	--	--	--	--	--	4
Jun						
4	--	--	--	1	--	1
11	--	--	--	--	--	--
18	--	--	--	--	--	--
25	--	--	--	--	--	--
30	--	--	--	--	--	--
Jul Total	--	--	--	--	--	--
Remainder	--	--	--	--	--	--
Total	1,055	853	636	937	496	955

^{1/} 2005-06 Preliminary.

^{2/} Fallglo and Sunburst varieties.

SOURCE: See page 47, Data Sources, Item 6.

FLORIDA CITRUS: Distribution of recorded utilization, by types, by months,
crop years 2001-02 through 2005-06

Crop year	Sep	Oct	Nov	Dec	Jan	Feb	Mar	Apr	May	Jun	Jul	Aug	Total
<i>Percent</i>													
FRESH ORANGE SHIPMENTS													
2001-02	--	6	23	22	12	5	11	8	8	5	--	--	100
2002-03	--	15	17	21	12	8	7	8	7	5	--	--	100
2003-04	--	9	17	19	9	7	10	11	10	8	--	--	100
2004-05	--	--	21	19	11	7	15	12	9	6	--	--	100
2005-06	--	3	18	21	12	10	10	9	8	6	3	--	100
PROCESSED ORANGE USAGE													
2001-02	--	--	11	14	16	11	13	15	14	6	--	--	100
2002-03	--	--	12	17	19	9	10	16	13	4	--	--	100
2003-04	--	--	9	15	16	11	13	16	13	7	--	--	100
2004-05	--	--	4	15	17	14	11	18	14	7	--	--	100
2005-06	--	--	3	13	16	13	12	16	15	9	3	--	100
FRESH GRAPEFRUIT SHIPMENTS													
2001-02	--	8	12	12	14	16	19	13	6	--	--	--	100
2002-03	--	14	13	13	17	20	16	7	--	--	--	--	100
2003-04	--	10	13	13	17	19	18	7	3	--	--	--	100
2004-05	--	4	15	19	21	19	14	8	--	--	--	--	100
2005-06	--	3	13	16	20	18	20	10	--	--	--	--	100
PROCESSED GRAPEFRUIT USAGE													
2001-02	--	--	6	6	9	19	31	20	9	--	--	--	100
2002-03	--	4	5	8	15	22	28	15	3	--	--	--	100
2003-04	--	3	6	7	13	19	29	19	4	--	--	--	100
2004-05	--	3	8	12	16	22	25	14	--	--	--	--	100
2005-06	--	3	12	10	12	17	30	16	--	--	--	--	100
FRESH TANGERINE SHIPMENTS													
2001-02	--	16	20	24	16	9	11	4	--	--	--	--	100
2002-03	--	20	21	13	15	9	10	9	3	--	--	--	100
2003-04	4	9	20	19	13	10	14	11	--	--	--	--	100
2004-05	--	13	20	20	14	11	13	9	--	--	--	--	100
2005-06	--	10	16	22	14	9	12	11	6	--	--	--	100
FRESH TANGELO SHIPMENTS													
2001-02	--	--	26	49	21	4	--	--	--	--	--	--	100
2002-03	--	--	25	58	17	--	--	--	--	--	--	--	100
2003-04	--	--	23	59	15	3	--	--	--	--	--	--	100
2004-05	--	--	21	55	19	5	--	--	--	--	--	--	100
2005-06	--	--	20	51	22	7	--	--	--	--	--	--	100
FRESH TEMPLE SHIPMENTS													
2001-02	--	--	--	--	48	40	12	--	--	--	--	--	100
2002-03	--	--	--	--	55	35	10	--	--	--	--	--	100
2003-04	--	--	--	--	54	36	10	--	--	--	--	--	100
2004-05	--	--	--	--	44	45	11	--	--	--	--	--	100
2005-06	--	--	--	--	42	46	12	--	--	--	--	--	100

CITRUS: Per capita consumption, United States, 1996-97 through 2005-06 ^{1/}

Crop Year	Fresh Citrus						Citrus Juices		
	Oranges & Temples	Grapefruit	Tangerines & tangelos	Lemons	Limes	Total ^{2/}	Orange	Other Citrus	Total ^{2/}
	<i>Pounds</i>						<i>Gallons, single strength</i>		
1996-97	13.91	6.18	2.52	2.76	1.15	26.52	5.30	0.73	6.03
1997-98	14.61	5.94	2.17	2.46	1.40	26.58	5.74	0.74	6.48
1998-99	8.38	5.75	2.30	2.61	1.33	20.37	5.71	0.70	6.41
1999-00	11.74	5.09	2.86	2.44	1.39	23.52	5.65	0.69	6.35
2000-01	11.88	4.85	2.72	2.96	1.50	23.91	5.36	0.75	6.11
2001-02	11.74	4.63	2.55	3.33	1.10	23.35	5.04	0.61	5.65
2002-03	11.89	4.10	2.72	3.32	1.91	23.94	4.91	0.61	5.52
2003-04	10.78	4.14	2.76	3.12	1.88	22.68	4.96	0.52	5.48
2004-05	11.40	2.65	2.49	2.94	2.15	21.64	4.84	0.39	5.23
2005-06 ^{3/}	9.82	2.30	2.64	3.96	2.21	20.93	4.30	0.37	4.67

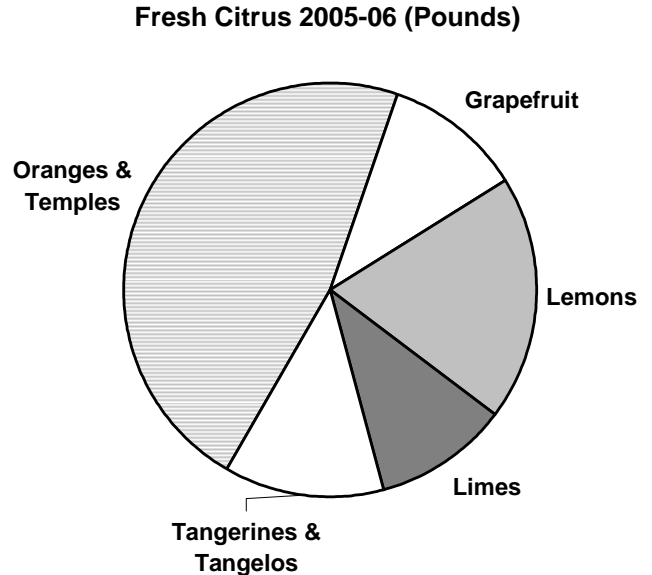
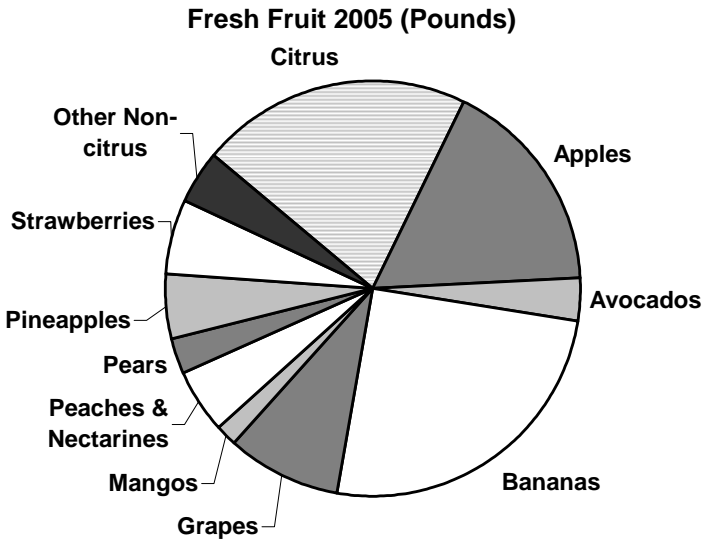
^{1/} For oranges, Temples, tangerines, and tangelos, years begin in November, grapefruit in September, and lemons in August of first year shown. Lime year begins in April of second year shown.

^{2/} Some figures may not add due to rounding.

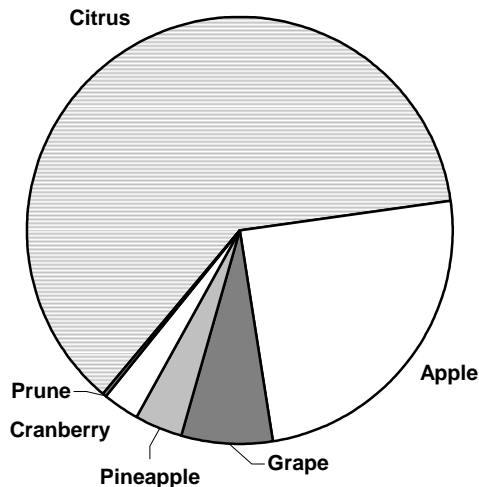
^{3/} Preliminary.

SOURCE: See Page 47, Data Sources, Item 9

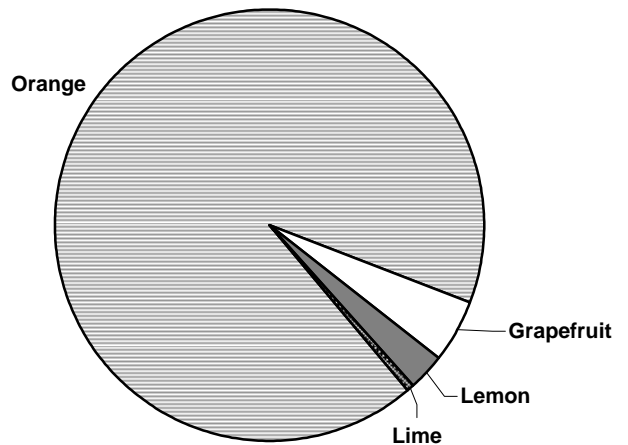
Per Capita Consumption: Fresh Fruit and Selected Fruit Juices



Selected Fruit Juices 2005-06 (Gallons)



Selected Citrus Juices 2005-06 (Gallons)



**CITRUS FRUIT: Production, by selected countries, principal types,
crop years 2001-02 through 2005-06 ^{1/}**

Country	Crop years ^{2/}				
	2001-02	2002-03	2003-04	2004-05	2005-06
Oranges	<i>1,000 metric tons ^{3/}</i>				
Brazil	18,360	15,382	19,054	16,565	18,523
United States ^{4/}	11,290	10,527	11,734	8,420	8,101
China, Peoples Republic of	3,598	3,600	4,036	4,250	4,450
Mexico	4,020	3,734	3,901	4,000	3,800
Spain	2,822	2,950	3,052	2,691	2,260
Italy	1,724	1,723	1,835	1,997	2,230
Egypt	1,696	1,734	1,740	1,775	1,789
Turkey	1,250	1,250	1,250	1,300	1,300
South Africa; Republic of ^{5/}	1,263	1,148	1,113	1,144	1,210
Greece	1,076	1,145	550	764	962
Morocco	720	800	705	813	810
Argentina	780	700	750	770	700
Australia	633	407	453	547	450
Cuba	325	480	398	200	250
Israel	160	143	133	184	165
Cyprus	93	35	35	35	35
Japan	18	17	16	14	13
Total world	49,828	45,775	50,755	45,469	47,048
Grapefruit					
China, Peoples Republic of	--	1,526	1,642	1,800	1,850
United States	2,199	1,872	1,964	924	1,118
Mexico	297	281	409	360	330
South Africa, Republic of	384	256	264	290	330
Israel	251	255	237	263	256
Argentina	170	185	160	170	150
Turkey	135	125	135	135	150
Cyprus	38	30	30	30	30
Cuba	150	227	20	7	10
Italy	30	7	7	7	8
Total world	3,654	4,764	4,868	3,986	4,232
Tangerines					
China, Peoples Republic of	6,268	6,545	6,870	8,550	8,050
Spain	1,800	2,025	2,060	2,458	2,130
Japan ^{6/}	1,527	1,332	1,330	1,249	1,289
Korea, Republic of	651	690	630	594	661
Italy	611	540	528	610	630
Turkey	580	590	550	600	600
Egypt	493	504	478	481	483
United States ^{7/}	469	442	419	367	435
Morocco ^{8/}	405	478	408	443	425
Argentina	416	380	420	430	380
Israel	83	71	88	122	120
Greece	67	79	53	56	81
Cuba	2	3	4	2	3
Total world	13,372	13,679	13,838	15,962	15,287
Lemons					
Argentina	1,200	1,200	1,220	1,300	1,200
Spain	1,037	920	1,130	729	890
United States	727	931	724	789	855
Italy	547	528	534	609	609
Turkey	510	525	550	670	600
South Africa, Republic of	169	182	183	199	203
Israel	19	20	45	54	54
Other ^{9/}	160	155	114	86	94
Total world	4,369	4,461	4,500	4,436	4,505

^{1/} Forecast.

^{2/} Crop years refers to harvest and marketing period, which usually begins in the fall and extends to the spring.

^{3/} One metric ton is equivalent to 2,204.6 pounds.

^{4/} Includes Temples.

^{5/} Includes small quantities of tangerines.

^{6/} Mainly Satsumas, but also including mandarin hybrids.

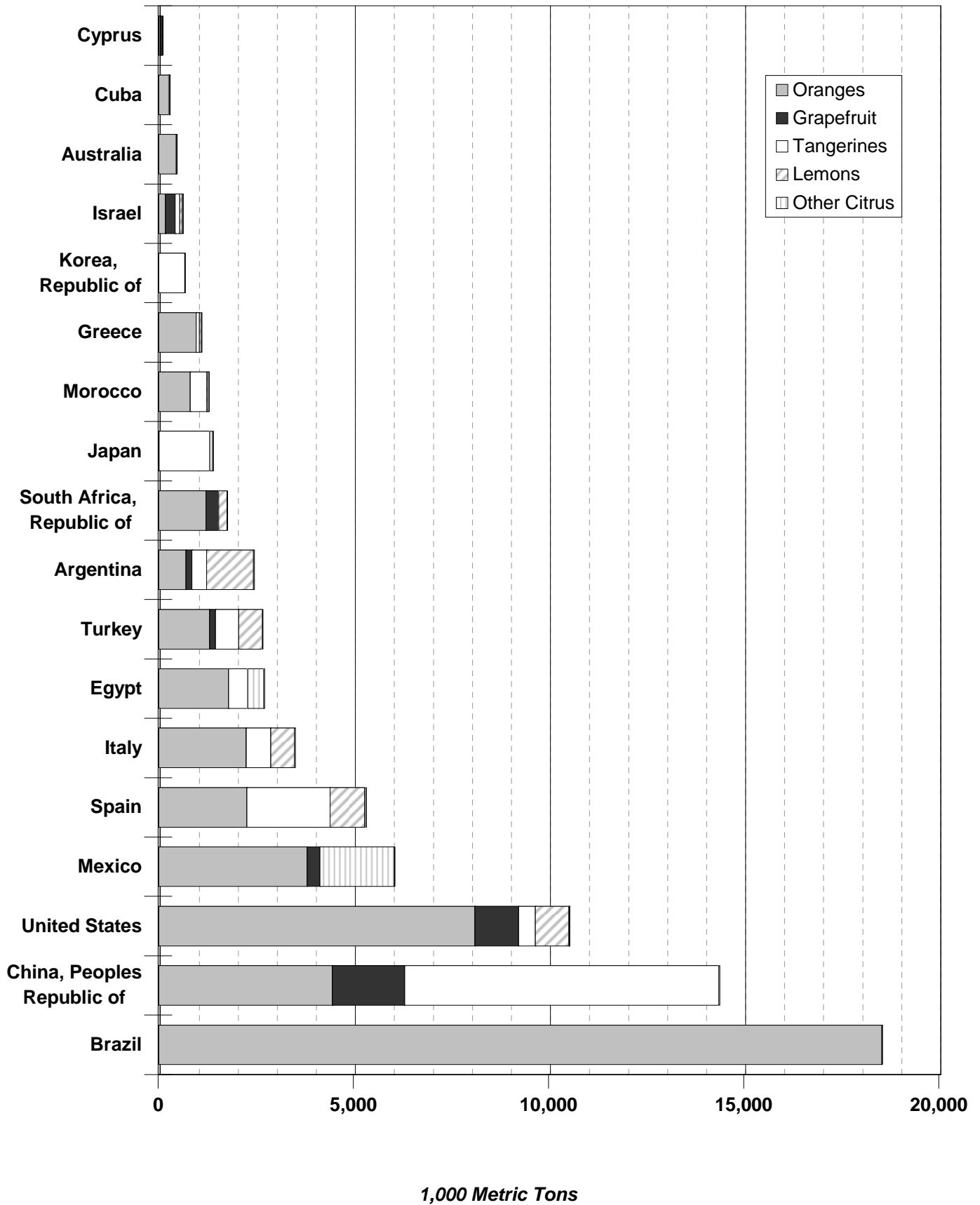
^{7/} Includes tangelos.

^{8/} Clementines only.

^{9/} Greece, Cyprus, Morocco, and Japan.

SOURCE: See Page 47, Data Sources, Item 5.

World Citrus Production by Selected Countries, 2005-06



U. S. DEPARTMENT OF AGRICULTURE
NATIONAL AGRICULTURAL STATISTICS SERVICE
1400 Independence Ave. SW
Washington, D.C. 20250
1-800-727-9540
<http://www.nass.usda.gov/>
STATE FIELD OFFICES

ALABAMA

P.O. Box 240578
Montgomery 36124-0578
334-279-3555
<http://www.nass.usda.gov/al>

ALASKA

P.O. Box 799
Palmer 99645-0799
907-745-4272
<http://www.nass.usda.gov/ak>

ARIZONA

230 North 1st Ave., Ste. 303
Phoenix 85003-1706
602-280-8850
<http://www.nass.usda.gov/az>

ARKANSAS

10800 Financial Centre Pkwy.,
Ste 110
Little Rock 72211-3543
501-228-9926
<http://www.nass.usda.gov/ar>

CALIFORNIA

P.O. Box 1258
Sacramento 95812-1258
916-498-5161
<http://www.nass.usda.gov/ca>

COLORADO

P.O. Box 150969
Lakewood 80215-0969
303-236-2300
<http://www.nass.usda.gov/co>

DELAWARE

2320 S. Dupont Hwy.
Dover 19901-5515
302-698-4537
<http://www.nass.usda.gov/de>

FLORIDA

P.O. Box 530105
Orlando 32853-0105
407-648-6013
<http://www.nass.usda.gov/fl>

GEORGIA

355 E. Hancock Ave., Ste. 320
Athens 30601-2768
706-546-2236
<http://www.nass.usda.gov/ga>

HAWAII

1428 South King Street
Honolulu 96814-2512
808-973-2907
<http://www.nass.usda.gov/hi>

IDAHO

P.O. Box 1699
Boise 83701-1699
208-334-1507
<http://www.nass.usda.gov/id>

ILLINOIS

P.O. Box 19283
Springfield 62794-9283
217-492-4295
<http://www.nass.usda.gov/il>

INDIANA

1435 Win Hentschel Blvd.,
Ste B105
West Lafayette 47906-4151
765-494-8371
<http://www.nass.usda.gov/in>

IOWA

833 Federal Bldg.
210 Walnut Street
Des Moines 50309
515-284-4340
<http://www.nass.usda.gov/ia>

KANSAS

P.O. Box 3534
Topeka 66601-3534
785-233-2230
<http://www.nass.usda.gov/ks>

KENTUCKY

P.O. Box 1120
Louisville 40201-1120
502-582-5293
<http://www.nass.usda.gov/ky>

LOUISIANA

P.O. Box 65038
Baton Rouge 70896-5038
225-922-1362
<http://www.nass.usda.gov/la>

MARYLAND

50 Harry S. Truman Pkwy.,
Ste. 202
Annapolis 21401-8960
410-841-5740
<http://www.nass.usda.gov/md>

MICHIGAN

P.O. Box 26248
Lansing 48909-6248
517-324-5300
<http://www.nass.usda.gov/mi>

MINNESOTA

P.O. Box 7068
St. Paul 55107-0068
651-296-2230
<http://www.nass.usda.gov/mn>

MISSISSIPPI

P.O. Box 980
Jackson 39205-0980
601-965-4575
<http://www.nass.usda.gov/ms>

MISSOURI

P.O. Box L
Columbia 65205-5011
573-876-0950
<http://www.nass.usda.gov/mo>

MONTANA

10 West 15th St., Ste. 3100
Helena 59626-9706
406-441-1240
<http://www.nass.usda.gov/mt>

NEBRASKA

P.O. Box 81069
Lincoln 68501-1069
402-437-5541
<http://www.nass.usda.gov/ne>

NEVADA

P.O. Box 8880
Reno 89507-8880
775-972-6001
<http://www.nass.usda.gov/nv>

NEW ENGLAND

(CT, ME, MA, NH, RI, and VT)
P.O. Box 1444
Concord, NH 03302-1444
603-224-9639
<http://www.nass.usda.gov/nh>

NEW JERSEY

P.O. Box 330
Trenton 08625-0330
609-292-6385
<http://www.nass.usda.gov/nj>

NEW MEXICO

P.O. Box 1809
Las Cruces 88004-1809
505-522-6023
<http://www.nass.usda.gov/nm>

NEW YORK

10 B Airline Drive
Albany 12235
518-457-5570
<http://www.nass.usda.gov/ny>

NORTH CAROLINA

P.O. Box 27767
Raleigh 27611-7767
919-856-4394
<http://www.nass.usda.gov/nc>

NORTH DAKOTA

P.O. Box 3166
 Fargo 58108-3166
701-239-5306
<http://www.nass.usda.gov/nd>

OHIO

P.O. Box 686
Reynoldsburg 43068-0686
614-728-2100
<http://www.nass.usda.gov/oh>

OKLAHOMA

2800 N. Lincoln Blvd.
Oklahoma City 73105
405-522-6190
<http://www.nass.usda.gov/ok>

OREGON

1220 S.W. 3rd Ave.,
Rm. 1735
Portland 97204-2833
503-326-2131
<http://www.nass.usda.gov/or>

PENNSYLVANIA

2301 N. Cameron St.,
Rm. G-19
Harrisburg 17110-9405
717-787-3904
<http://www.nass.usda.gov/pa>

PUERTO RICO

P.O. Box 10163
Santurce 00908-1163
787-723-3773
<http://www.nass.usda.gov/pr>

SOUTH CAROLINA

P.O. Box 1911
Columbia 29202-1911
803-765-5333
<http://www.nass.usda.gov/sc>

SOUTH DAKOTA

P.O. Box 5068
Sioux Falls 57117-5068
605-323-6500
<http://www.nass.usda.gov/sd>

TENNESSEE

P.O. Box 41505
Nashville 37204-1505
615-781-5300
<http://www.nass.usda.gov/tn>

TEXAS

P.O. Box 70
Austin 78767-0070
512-916-5581
<http://www.nass.usda.gov/tx>

UTAH

P.O. Box 25007
Salt Lake City 84125-0007
801-524-5003
<http://www.nass.usda.gov/ut>

VIRGINIA

P.O. Box 1659
Richmond 23218-1659
804-771-2493
<http://www.nass.usda.gov/va>

WASHINGTON

P.O. Box 609
Olympia 98507-0609
360-902-1940
<http://www.nass.usda.gov/wa>

WEST VIRGINIA

1900 Kanawha Blvd. E.
Charleston 25305-0170
304-345-5958
<http://www.nass.usda.gov/wv>

WISCONSIN

P.O. Box 8934
Madison 53708-8934
608-224-4848
<http://www.nass.usda.gov/wi>

WYOMING

P.O. Box 1148
Cheyenne 82003-1148
307-432-5600
<http://www.nass.usda.gov/wy>

DATA SOURCES

All data in this summary are official statistics of United States Department of Agriculture issued by the National Agricultural Statistics Service, except when another source is shown.

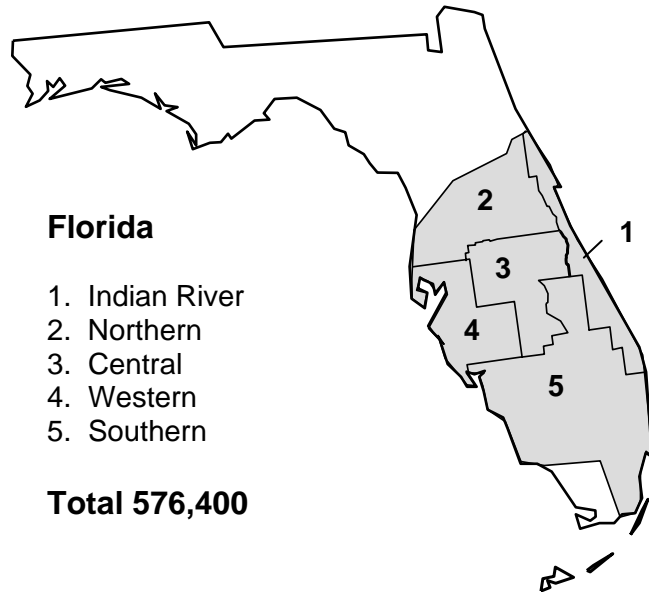
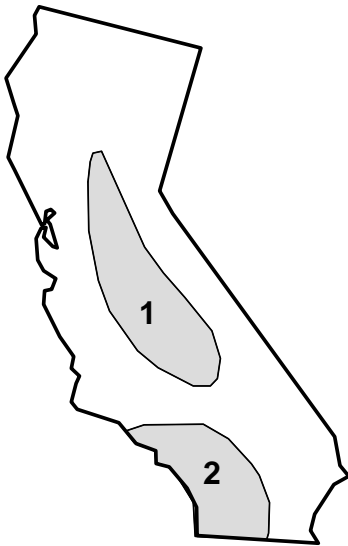
1. Florida Department of Citrus
P.O. Box 148
Lakeland, Florida 33802-0148
Economic and Market Research Home Page
<http://www.floridajuice.com>
2. Hume, H. Harold, The Cultivation of Citrus Fruits
(New York: The Macmillan Co., 1926)
3. Florida Citrus Processors Association
P.O. Box 780
Winter Haven, Florida 33882-0780
<http://www.fcplanet.org>
4. United States Department of Agriculture
National Agricultural Statistics Service
1400 Independence Ave., SW
Washington, D.C. 20250
<http://www.nass.usda.gov>
5. United States Department of Agriculture
Foreign Agricultural Service
1400 Independence Ave., SW
Washington, D.C. 20250
<http://www.fas.usda.gov>
6. Florida Department of Agriculture and Consumer Services
Division of Fruit and Vegetables
P.O. Box 1072
Winter Haven, Florida 33882-1072
<http://www.doacs.state.fl.us/fruits/index.html>
7. Citrus Administrative Committee
P.O. Box 24508
Lakeland, Florida 33802-4508
<http://www.citrusadministrativecommittee.org>
8. Florida Citrus Mutual
P.O. Box 89
Lakeland, Florida 33802-0089
<http://www.flcitrusmutual.com>
9. United States Department of Agriculture
Economic Research Service
1800 M Street NW
Washington, D.C. 20036-5831
<http://www.ers.usda.gov>
10. Southeast Regional Climate Center
1000 Assembly Street,
Suite 230
Columbia, SC 29201
<http://www.dnr.sc.gov/climate/sercc>

U. S. CITRUS PRODUCTION AREAS AND BEARING ACREAGE

California

1. San Joaquin Valley
2. Southern California

Total 250,500 acres



Florida

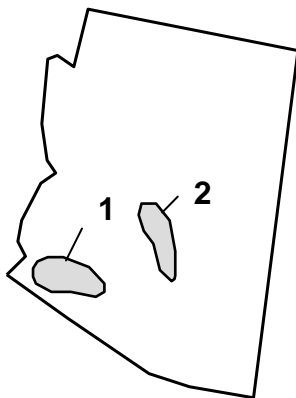
1. Indian River
2. Northern
3. Central
4. Western
5. Southern

Total 576,400

Texas

1. Lower Rio Grande Valley

Total 27,300 acres

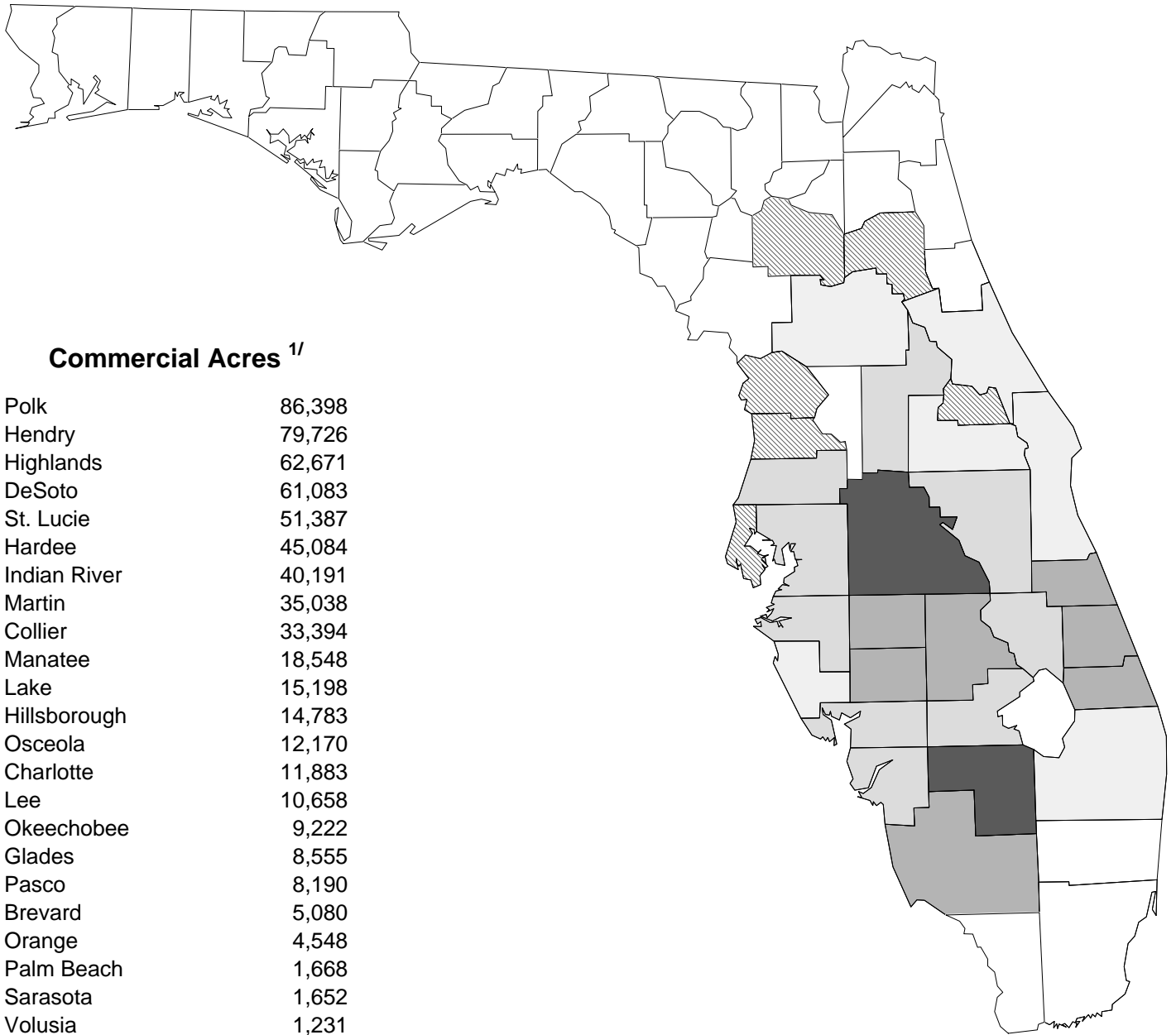


Arizona

1. Western
2. Central

Total 23,500

COMMERCIAL CITRUS ACREAGE 2006



Commercial Acres ^{1/}

Polk	86,398
Hendry	79,726
Highlands	62,671
DeSoto	61,083
St. Lucie	51,387
Hardee	45,084
Indian River	40,191
Martin	35,038
Collier	33,394
Manatee	18,548
Lake	15,198
Hillsborough	14,783
Osceola	12,170
Charlotte	11,883
Lee	10,658
Okeechobee	9,222
Glades	8,555
Pasco	8,190
Brevard	5,080
Orange	4,548
Palm Beach	1,668
Sarasota	1,652
Volusia	1,231
Marion	1,185
Hernando	921
Seminole	529
Putnam	182
Citrus	145
Other ^{2/}	53

TOTAL 621,373

^{1/} Excludes Miami-Dade and Broward Counties.

^{2/} Alachua and Pinellas Counties.

