

the Bulletin Board

VOLUME 18, NUMBER 41

Published by the BNL Personnel Office

AUGUST 11, 1965

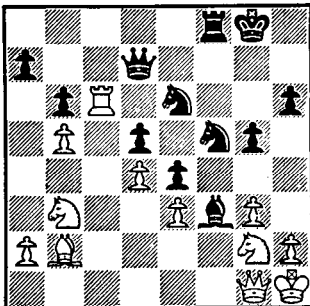
EXHIBIT AND DEMONSTRATION

The Arthur H. Thomas Co. cordially invites BNL personnel to a technical exhibit and demonstration of laboratory instruments and apparatus. The exhibit will be held on Tuesday, August 17, from 9:00 a.m. to 4:00 p.m. in the Biology Department library, building No. 463.

The equipment to be shown will feature a completely new osmometer and new instrumentation in the field of spectrophotometry. Technical sales representatives will be on hand to discuss the apparatus. Refreshments will be served.

CHESS PROBLEM

Having a good look at this week's diagram, White doesn't appear to have much to worry about. But watch out! It's Black's move and win. Solution elsewhere in the BULLETIN BOARD.



CHILDREN'S SUMMER PROGRAM

The children's on-site Summer Program featured a candy hunt as its special event last week. Under the direction of Walt LaPrairie, five pounds of candy were hidden in the area surrounding the Recreation Building. The candy was quickly found and devoured by fifty eager mouths.

Next week's special will be a track and field program. During the week, there will also be numerous other contests and games.

Wednesday's results of the weekly tournament day are as follows: tether tennis, Joe Carter; chinese checkers, Howard Sosin; horseshoe doubles, Paul Carter and Howard Sosin. Joe Carter defeated Johann Hellestrand in the finals of a hotly-contested horseshoe match.

BERA Film Series Double Feature

BEAT THE DEVIL - plus - FORBIDDEN FRUIT

Thurs., Aug. 12 - Lecture Hall - 8:30 p.m.



Beat The Devil

Humphrey Bogart and producer-director John Huston, who teamed on such award-winning pictures as "The Maltese Falcon", "The Treasure of Sierra Madre" and "The African Queen" romp their way through one of the maddest satires of the screen tradition in "Beat the Devil." Abetted by such international comedians as Jennifer Jones, Gina Lollobrigida, Robert Morley and Peter Lorre, Bogart and Huston joyously use and happily abuse the very fabrics of their own reputations, the tricks and approaches which made Bogart so unique and powerful a star, and Huston one of the world's greatest directors.

Bogart's characterization as a screen "tough guy" and hard-boiled lover takes a special beating in "Beat the Devil." So does the traditional screen crew of cold-blooded double-crossing thieves and killers who usually surround him; they turn into a hopeless assortment of incompetents. So do the women in Bogart's life; here his full-bodied screen wife has roving eyes which sparkle in every direction but his, and there is a lovely young thing who will promise him anything but . . . "Beat the Devil" satirizes screen sex, suspense, adventure and intrigue; it was a pioneer effort of its kind. Re-released in New York in 1964, the film was critically

(continued on page 2)

TUITION REFUND REMINDER

Those expecting to take fall semester courses under the tuition refund plan are reminded that they must have received approval prior to starting the course. There will be no exceptions to this rule.

THEATRE GROUP

The Advisory Committee of the BERA Theatre Group is currently reading plays for recommendation to the membership as possible productions for next year. The Committee would welcome suggestions from both members and non-members.

If you would like to recommend one or more plays for the Committee's consideration, please fill out the form below and forward it to Ann Leonard, 510.

TITLES:.....
.....
.....
.....
Your name.....

POOL SCHEDULE

Monday through Friday
2:30 p.m. to 9:30 p.m.

GYM SCHEDULE

Monday through Thursday
Evenings to 9:30

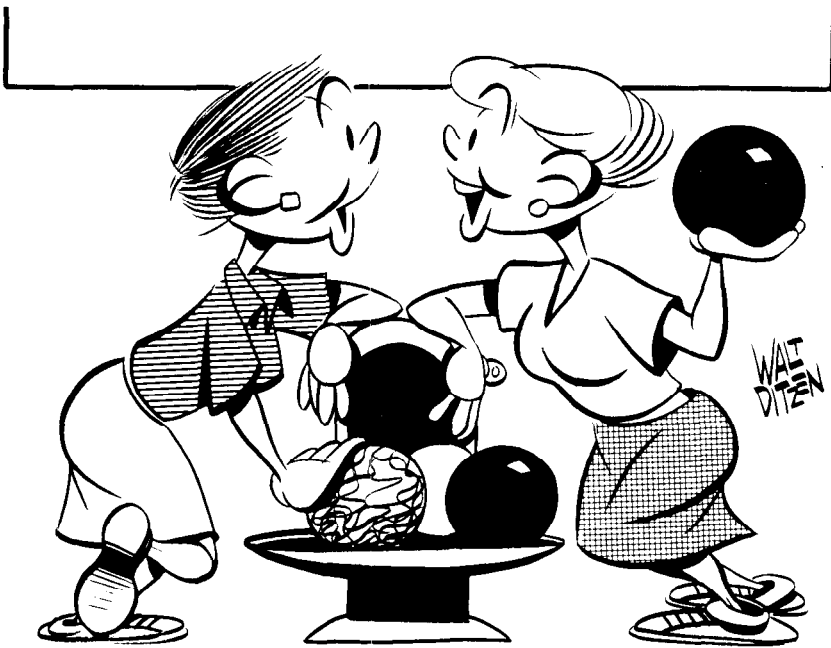
POOL NOTICE

The pool does not open for general admission until 2:30 p.m. daily. Parents bringing children to the Laboratory to swim are requested **not** to do so before 2:15 p.m.

DYNAMITE A GO-GO!

Don't forget the second summer stomp, "The Detonation Dance," slated for tonight at 9:00. If you missed out on the details, either read the August 4 edition of the BULLETIN BOARD or be at the Recreation Building tonight at 9.

WINTER BOWLING LEAGUES FORMING NOW



Preparations are underway for another big season of bowling, one of the most popular forms of recreation at Brookhaven. Last year, we had sixty-two teams in eight leagues battling all the way for league trophies and the BNL championship. Bowling leagues are sponsored and supported by the Brookhaven Employees' Recreation Association and governed by an Executive Bowling Board made up of representatives from all leagues.

Preliminary information and team entry blanks have been sent out to last year's team captains. There are more entry blanks available at the Recreation Office. As before, entry priority will be given to teams which bowled in BNL leagues during the '64-65 season. This priority will be good for the same league only, and at least three of last year's bowlers must be on the roster for this year. Priority will expire on August 18, one week before the August 25 deadline, for all entries. League openings for new teams will be assigned on the basis of the date on which the entry is received. Full payment of \$4.00 per bowler must accompany each team entry. (In the Mr. and Mrs. league the fee is \$5.50 per couple.)

Last year's schedules were as follows: Monday and Wednesday men's leagues at Maggio's in Patchogue; Tuesday ladies' league at Patchogue Bowling Center; Tuesday and Wednesday men's leagues at Port Jefferson; and a Tuesday ladies' league at Port Jefferson - all starting at 6:00 p.m. The Mr. and Mrs. League bowled at Patchogue Bowling Center on Sunday evenings, beginning at 6:30 p.m. These can be changed or new leagues started if there is sufficient demand.

Now is the time for all good bowlers to get a team together. Rosters can contain from five to ten bowlers for men's leagues, four to eight for ladies' leagues, and four to six for the Mr. and Mrs. league. Entry blanks are available at the Recreation Office. The earlier you enter, the better your chance to get the league of your choice.

BERA FILM SERIES (Cont'd)

hailed as the first of the James Bond thriller ... "twenty years ahead of its time."

"Hugely entertaining ... Wild lunacy!" —NEW YORKER

**FORBIDDEN FRUIT
With
Fernandel**



As a shy and gentle country doctor, always surrounded by domineering women, Fernandel succumbs to temptation (Francoise Arnoul). After a brief clandestine affair, his illusions of happiness with an amoral young girl are shattered, and he returns to his wife and family. A prime Georges Simenon novel has been turned into a deft, moving film.

"A sober study of adultery. Betokening his remarkable range of talent, Fernandel gives a crystal-clear performance of tingling joys and shameful fears. Vive Fernandel!"

—Crowther, N.Y. TIMES

"A picture of solid merit ... emerges with the smooth realism of a stone long ground by the waves. Good and true, so thoroughly French!"

—NEW YORK POST

"Fernandel gives a sensitive and even passionate performance."

—N.Y. HERALD TRIBUNE

"Francoise Arnoul is loaded with sexy wiles. Fernandel is spinning one of the most hypnotic spells of any actor we have around at the moment."

—WORLD TELEGRAM

Arrivals and Departures

WELCOME TO BNL

AGS		
Joseph P. Hannwacker	Ext. 2980	
APPLIED MATHEMATICS		
Joseph Kahane	2810	
BIOLOGY		
Sadao Ichikawa	388	
Robert Love, Jr.	7208	
MEDICAL		
Lydia J. Guerriera	301	
PHYSICS		
John T. Sample	7743	
SECURITY		
Patricia Meade	2392	

RECENT DEPARTURES

BIOLOGY	
David G. Hoare	
Mary E. Kirtley	
Henry Weiner	
PHYSICS	
Akio Honma	

SOLUTION TO CHESS

- | | |
|------------------|----------------------------------|
| 1. | 1. N3xP |
| 2. N or B or PxN | 2. NxP Check |
| 3. PxN | 3. Q-R6 Check |
| 4. Q-R2 | 4. BxN Check and Mate next . . . |

POOL EVENTS

More than thirty youngsters turned out for last Friday's pool special, a watermelon scrimmage. Five heats were held to see which team could score the most points by placing a fifteen-pound watermelon on the opposite side of the pool. The No. 2 team scored with a 3 out of 5 victory. The previous week's "special" was our annual inner tube derby. Finishing twenty feet ahead of second-place Dave Halpern, Pat Kelly was the uncontested champion. Friday, August 13, 3:30 p.m.: Surprise Pool Special for Children.

TENNIS TOURNAMENT

Connell/Merkle Win Mixed Doubles

In a complete reversal of the 1964 mixed doubles finals, the team of Helen Connell and Walt Merkle defeated Andy and Marta Kevey last week to take the 1965 BNL Mixed Doubles Championship.

The victors soared off to a commanding lead and took the first set 6-2. The second set, however, was a nip and tuck battle that must have produced many ulcers for both contestants and spectators. In this set, the score in games was constantly exchanged, and the tenth and final game proved to be the highlight of the match. With the score at deuce numerous times, it seemed that the determined Kevey pair might break Merkle's service and tie the score in games. But despite the strong bid, Connell and Merkle gained the advantage and match point to take this year's title.

Congratulations to the winners and to all participants for their fine play and sportsmanship. A word of appreciation, also, to our volunteer officials, Larry Passell, John Van Norman and Phil Palmedo, for their help with the finals.

Men's Singles This Week

Finals are scheduled for Thursday, August 12, at 5:15 p.m.

John Nerenberg moved into the finals as he went all out to defeat a determined John Elmore in what many spectators considered one of the best matches of the year (6-4, 6-3). Nerenberg will face the winner of the Brandon-Kevey match for the championship.

Men's Doubles Rescheduled

Due to conflicts, it has been necessary to reschedule the men's doubles finals for Tuesday, August 17, at 5:15 p.m. August 1

**CAFETERIA MENU
AUGUST 11-18**

WEDNESDAY

Scotch barley soup	
Veal cutlet, brown gravy	.65
Grilled bacon wrapped lamb patty	.65
Special sandwiches	
Franks, sauerkraut, french fries	.45
Canadian bacon, tomato, potato salad, pickle	.60
Whipped potatoes	
Potatoes hashed in cream	
Cauliflower polonaise	
Buttered peas	
Chef's salad bowl	.75
Pineapple boat	.75
Molded bing cherry	.60
Apricot, cottage cheese	.15

THURSDAY

Luncheon Special

Minestrone Soup	
Spaghetti & meat balls or sausage	
Pan browned potatoes	
Celery, Olives	
Italian ices	
Selection from antipasto table	
\$.99	

Baked ham loaf	.65
Buttered green beans	
Green salad bowl	.75
Antipasto	.75
Tropical fruit salad	.60
Sliced tomatoes	.15

FRIDAY

New England clam chowder	
Fried shrimp, tartar sauce	.65
Beef stroganoff	.65
Broiled haddock, tartar sauce	.65
Veal patty, brown gravy	.60
Special sandwich	
Crab mt. salad, cole slaw, pot. chips	.65
Whipped potatoes	
French fried potatoes	
Buttered green beans	
Fresh corn on the cob	
Shrimp salad bowl	.75
Ham & cheese platter	.75
Perfection salad	.60
Garbanzo bean salad	.15

MONDAY

Vegetable soup	.15
Veal loaf, supreme sauce	.65
Braised beef cubes, noodles	.65
Grilled franks, baked beans	.60
Whipped potatoes	
Buttered noodles	
Glazed carrots	
Buttered summer squash	
Special sandwiches	
Hot western on a roll, fr. frs., pickle	.60
Italian hoagie, celery, olives, peppers	.60
Sliced turkey platter	.75
California salad bowl	.75
Apricot, banana, grape salad	.60
Marinated cucumber & onion	.15

TUESDAY

Corn chowder	.15
Baked chicken breast, Dixie style	.65
Macaroni, beef & tomato casserole	.65
Cheese omelette	.50
Whipped potatoes	
Hashed brown potatoes	
Buttered peas & celery	
Buttered beets	
Special sandwiches	
Grilled ham & cheese, potato chips, cole slaw	.65
Sliced roast beef, pickle, cole slaw	.65
Cold meat & cheese platter	.75
Fruit salad bowl, cottage cheese	.75
Pear & cream cheese coconut ball	.60
Green bean salad	.15

WEDNESDAY

Philadelphia pepper pot soup	.15
Roast fresh ham, gravy	.65
Chinese beef & green peper, rice	.65

Sauteed chicken livers	.65
Whipped potatoes	
Buttered parsley potatoes	
Buttered broccoli	
Mixed vegetables	
Special sandwiches	
Cheeseburger, french fries, pickle	.55
Corned beef on rye, cole slaw, sliced tomato	.60
Ham & turkey salad bowl	.75
Cottage ch., apricot, jellied grapefruit	.60
Apricot, banana nut roll	.60
Cole slaw, celery seed	.15

PERSONNEL SERVICES

**Recreation Office — 3 Center Street
Daily 9:00 a.m. — 1:00 p.m.**

Sammy Davis in "Golden Boy"

Arrangements have been made to secure discount rates for the Broadway musical hit, "Golden Boy," for the evening performance of Tuesday, August 31. The regular orchestra price is \$9.90, our price is \$6.90; the regular mezzanine price is \$8.60, our price is \$5.75. The offer is extended to us for a limited time only — so the sooner you make arrangements, the better. The deadline for reservations is August 19, or before if the supply is exhausted. Orders must be accompanied by a check payable to the Majestic Theatre.

Antiques Fair

Discount tickets are now at the office for the Fifth Annual Antiques Fair and Sale to be presented in Bellport on Aug. 18, 19, and 20 between 11:00 a.m. and 10:00 p.m. for the benefit of Brookhaven Memorial Hospital. Buffet snacks will be served. Regular admission price, \$1.00. Our price, \$.75.

Ice Show

Discount coupons are now available for the world premier of "Holiday on Ice of 1966" at Madison Square Garden. These coupons are good for the evening performances on Sept. 1, 2, 3, 7, 8, 9, 14, 15, 16 and 21 and the matinee on Sept. 5. Prices with coupons are \$4.25, \$3.75 and \$3.00.

Discount Coupons

Discount coupons, good now through August 21, are available for "Baker Street," playing at the Broadway Theatre in New York City.

FOUND

CAT - Well-fed adolescent male cat, all black. Owner please claim or up for adoption. P. Gutlich, Ext. 625.

MASONIC RING - Found in Medical parking lot.

Recreation Office — 3 Center Street

Watch for classified ad supplement later this week.

CLASSIFIED ADS

14' RUNABOUT - In water. A good buy at \$75. Ext. 639 or AT 6-0372.

19' SAILBOAT - Narrasketuck, dacron sails & lines, hull needs work. All offers considered. E. Courant, Ext. 374 or HR 2-0510.

SAILBOAT - Blue Jay, 4 years old, sails spinaker, 2 rudders (1 racing, 1 kick-up). AT 6-8957 after 5:30.

18' CATAMARAN - Twin 40 hp Evinrudes, elec. starters, tachometers, speedometer, Navy top, built-in gas tanks, new 12 V battery, 2 extra propellers, Holsclaw trailer with hydraulic brakes, spare tire & wheel. \$1650. E. Thompson, Ext. 2714 or AT 6-8734.

16½' BOAT - 1958 Flying Finn, 1960 40 hp Evinrude, remote control. All cushions, life jackets, anchor, 1 paddle, running lights & battery. \$850. GR 5-7372 after 5.

19' BOAT - Rhodes day sailer, very good cond. Dacron Sails incl. genoa & spinnaker. S.S. rigging, bronze c.b., anchor, mooring & dinghy. In water. McRickard, Ext. 2165.

14' SKIFF - Plywood, good fisherman's boat, excel. cond. Incl. anchor, self-bailer, lights, compass, floor gratings. \$150. Wes, Ext. 322 or HR 2-1289.

23' SAILBOAT - Sloop, centerboard, day sailer, lg. cockpit, cuddy cabin, new dacron sails, 5 hp outboard with bracket. Fast & stable. AT 6-2272.

16' BOAT - 1959 Lyman with Navy top and 1959 35 hp Evinrude with elec. start. 1960 Air Buoy trailer. Incl. anchor, 2 gas tanks, 5 cushions. Asking \$650. E. Zeidler, Ext. 339 or AT 9-1430 after 6.

25' SKIFF - Ulrichson, Navy top, drop curtains, sleeps 2, head, teak deck, twin 30-gal. tanks, 115 hp Chrysler, hydraulic controls, Sudbury venting, s/s fishwell. \$2250 firm. GR 5-2739 after 6.

16' SAILBOAT - Keel-centerboard, Marauder class. Draws 11" with board up, sleeps 2, roller reefing on jib & main. Seagull outboard, cushions, running lights, anchor, etc. Very lively & stable (self-righting & positive floatation). In water, excel. cond. Yamamoto, Ext. 7664 or AT 6-8350.

HOUSE - In Stony Brook. 5 rooms, garage, hot water oil heat, storms & screens. \$15,000. Ext. 481 or 751-1253.

HOUSE - 4-bedroom Split Level on ½ acre with many extras, near Route 111 and Smithtown Bypass. Available early Sept. J. Chen, Ext. 2432 or AN 5-7492.

HOUSE - In Miller Place, 4 bedrooms, 2 bathrooms, playroom, full basement, garage, oil hot water heat, split rail fence, tall trees, near school and beach. Ext. 321 or HR 3-2244 evenings.

CRIB - And chest, Storkline. \$15. Ext. 301-45.

MISCELLANEOUS - Outdoor 7'x10' toddler's white play fence, swim mask & fins, binoculars 7x35 coated lens with case, super sensitive earphones. AT 6-8718 after 6.

HAMSTERS - Four golden hamsters, 2½ months old and yours for only 50¢. Bob, Ext. 7111 or YA 4-6092.

KITCHEN SET - Table, leaf, 4 chairs, \$20. Aslo full sized mattress in good cond., \$10. Ext. 2507 or AT 6-0459 after 5:30.

FURNITURE - Living room couch & 2 chairs, Matlasse, recently upholstered. Bedroom furniture: twin beds, dresser, night table, bench, 2 mirrors. Low mahogany chest, leather top. Dining room table, round, with 6 chairs, Drexel. Elec. roaster & stand. One occasional chair. AT 6-0630.

WINDOW SCREENS - Tension type. 1 36x51, 2 20x55, 2 28x39. \$2 each. Ext. 2515.

MISCELLANEOUS - 21" Philco TV, console, excel. cond., \$50. 8' dinghy, fiberglassed, good tow boat, \$35. Pump, shallow well, Demming, piston, will lift water to 25', \$40. F. Truman, Ext. 2741 or GR 5-4627.

RECURVE BOW - 33 lbs. at 28" made by Outdoor Sports Mfg. Co. Quiver & 23 arrows. Also glove & arm protector. All for \$30. R. Meyer, Ext. 2428 of LT 9-5757.

WEIGHT REDUCING MACHINE - Complete with timing unit. In good cond. Orig. cost \$95, sell for \$15. B. Carty, Ext. 2351 or GR 5-4330.

COUCH - Red & black, converts to sleep two, fair cond. \$10. F. Levin, Ext. 2838 after Aug. 5.

BOOKS - "Proceedings of the I.R.E." bound in buckram, vols. 35 (1947) through 47 (1959). Also unbound vols. 48 (1960) through 51 (1963). Buy the bound volumes at \$4.25 each and get the rest free. Morse & Feshback "Methods of Theoretical Physics" 2 vol. set in new cond., \$22. Joas "Theoretical Physics" for \$5. Ext. 7219 or 7189 or AT 6-0614 after 6.

OXYGEN BOTTLE - 58 cu. ft. and 40 cu. ft. acetylene bottle, both with regulators. Complete, \$70. If you call quickly, you'll find them ½ full of gas. Ext. 7219, 7189, or AT 6-0614 after 6.

MISCELLANEOUS - Grill with hood & rotisserie, \$3. Lewyt vacuum cleaner, \$10. Wooden office desk, \$8. Swivel chair, \$5. Chrome fluorescent light fixture with 2 48" lamps, \$15. 3 piece maple bedroom set, \$85. Pair blonde formica end tables, \$7. Washing machine, good cond., \$35. 878-1669.

STEREO - 1965 Harmon Kardon all transistor, Citation pre amp 80 watt stereo amp, Garrard A70 turntable, Goodman 12" coaxial speakers in walnut enclosures. Best offer. Terry, Ext. 574.

RADIAL ARM SAW - Craftsman 10" accra arm & \$50 worth of accessories. \$150. Ext. 644.

WASHER & DRYER - Matching Westinghouse, used less than 2 years, excel. cond. \$125 for both. AT 6-2272.

TRAIN SET - .027 Lionel & HO, 3 transformers, 1 dual control 240W, 2 roundhouses, 120 ft. Lionel track, 60 ft. HO track, 6 auto. switches, 1 HO auto. switch, 1 coal loader, 30 cars, 2 engines (1 diesel, 1 locomotive), 1 HO trolley, 2 HO roundhouse, full set of scenery, plywood table top. \$100. J. Stoffel, Ext. 7677 or AT 9-3648 after 6.

COFFEE & COCKTAIL TABLES - ¾" imported Italian marble top, brass edging & 16" cast brass legs of elegant design. Cammarano, Ext. 691 or HR 3-7142 after 6.

SHELTIE PUPPIES - Miniature Collies. AKC champion blood lines, sable & white, beautifully marked, home raised. \$75-\$85. SO 5-2769.

PEDIGREED PERSIANS - Cats, kittens, blues, creams, blue-creams, champion stock, excel. breeding. HR 3-5354.

GO-KART ENGINE - 2½ hp, good cond. \$15. SH 4-5875.

MOVIE CAMERA - DeJur 8mm, magazine load type, A-1 cond. \$35. HR 3-0288.

HI-FI EQUIPMENT - Heath pre amp, \$15; Garrard turntable, needs minor repair, stylus in good cond., \$20. Ext. 7732 or 2786 evenings.

MISCELLANEOUS - Portable TV in excel. cond., \$50. Speakers: 15" woofer & Acoustic Research tweeter set, \$20. Pair of swim fins, \$4. P. Lieberman, Ext. 7732.

RUG - Dark olive green Acrilan, 15x12, used 1 yr. Orig. \$269.95; will sell for \$110 (pad free). Furuya, Ext. 2962 or AT 6-3934.

8' PRAM - With oars. \$40. AT 6-0384.

14' RUNABOUT - Fiberglass with 35 hp Evinrude, elec. start, Shipmate tilt bed trailer, & all extras. J. Mayeski, Ext. 2948.

22' SPEEDBOAT - 135 hp, double planked, fiberglassed, in water & ready to go. Only \$18 per ft. D. David, Ext. 7676 or AT 6-2267.

FOR RENT

HOUSE - All brick, 3 bedrooms, 2-car garage, on beautiful half acre in North Shirley, just 2.5 miles from the Lab gate. \$115. Available Sept. 15. YA 4-6767.

HOUSE - 6-room brick Cape Cod in beautiful Shoreham. Wall to wall carpeting, excel. cond., available immediately. SH 4-9633.

APARTMENT - In Shirley. 5 extra large rooms, modern kitchen. Shelby, Ext. 2326 or YA 4-5237 after 6.

COTTAGE - Pleasant 2-bedroom cottage in Rocky Point, ideally situated close to beach. Available Sept. 1. Cooper, Ext. 402 or 744-5924.

CARPOOLS

DRIVER - Wishes to join existing carpool or form new carpool from Port Jefferson Station. S. Cutler, Ext. 7677.

DRIVER - Wishes to join carpool from Queens, Brooklyn area or points west. C. Pretlow, Ext. 2416.

RIDER-DRIVER - Wanted from Nassau county or eastern Queens via L.I. Expressway, Veterans Memorial, Sunrise, Floyd Pkwy. T. Rimler, Ext. 566.

RIDERS - Wanted from Bellport and E. Patchogue to Lab. E. Potter, Ext. 2456 or 286-9705 after 7:30.

DRIVERS - Two wanted to complete existing carpool from Babylon area. G. Meinken, Ext. 2200.

DRIVER - Wishes to join carpool from Deer Park, Dix Hills, Wyandanch area. Call Jack Ext. 476.

LOST

EARRING - Pearl. Brookhaven Center or vicinity. N. Price, Ext. 2951.