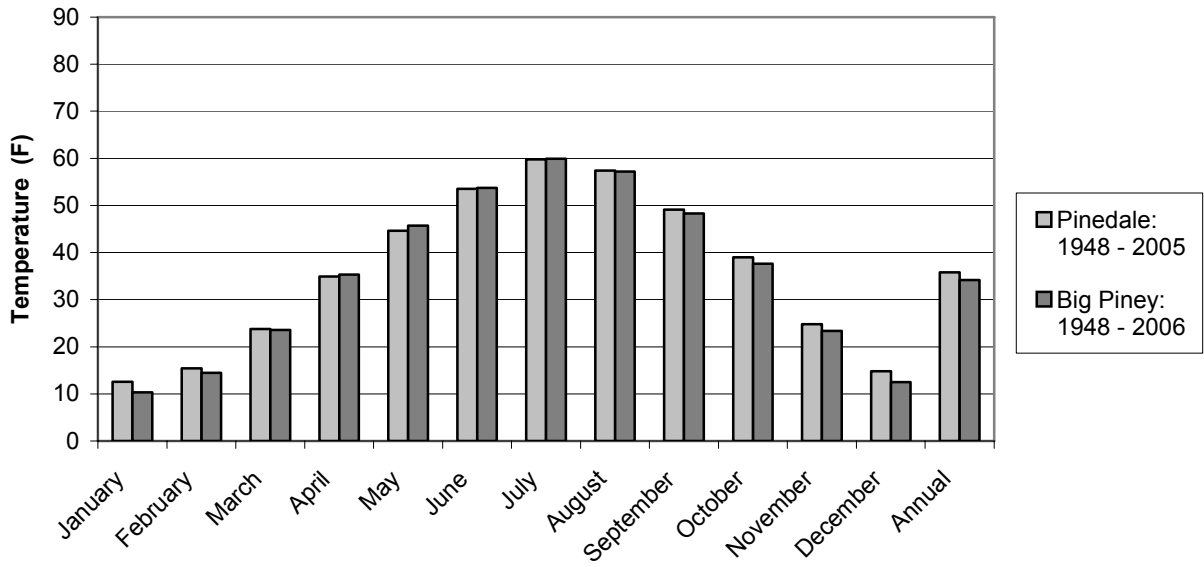


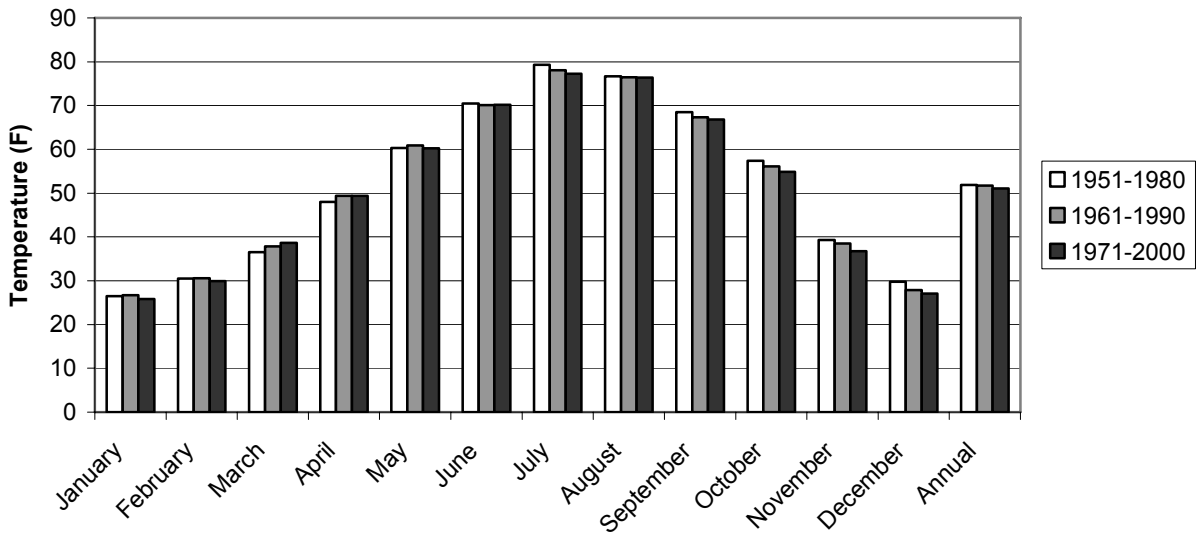
FIGURES

Figure 3-1. Mean Monthly Temperatures in the Pinedale Region



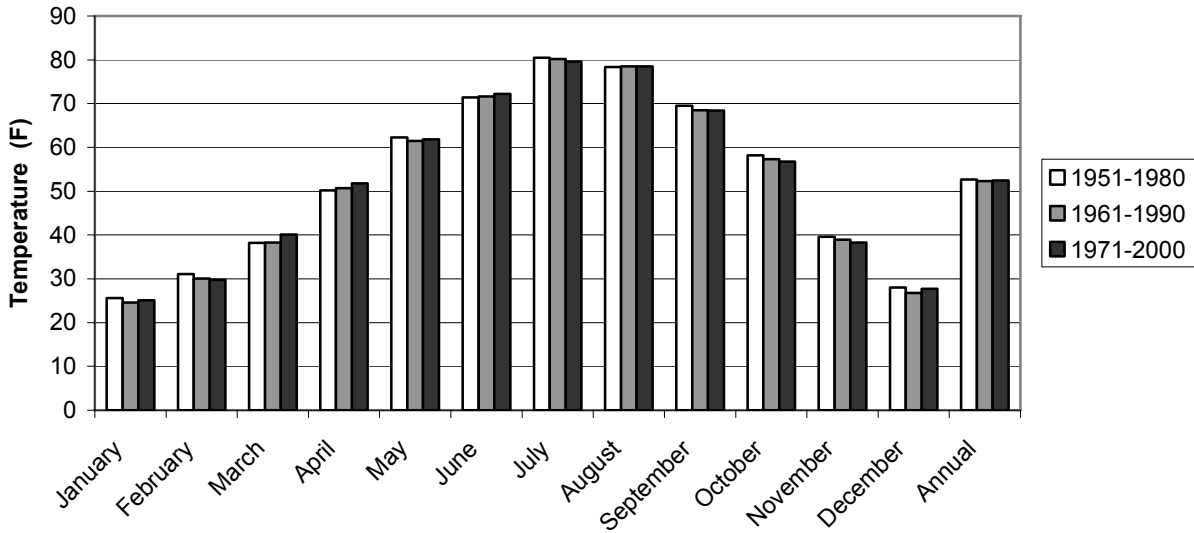
Data taken from Western Regional Climate Center

Figure 3-2. Mean Monthly Maximum Temperature Trend in Pinedale, Wyoming



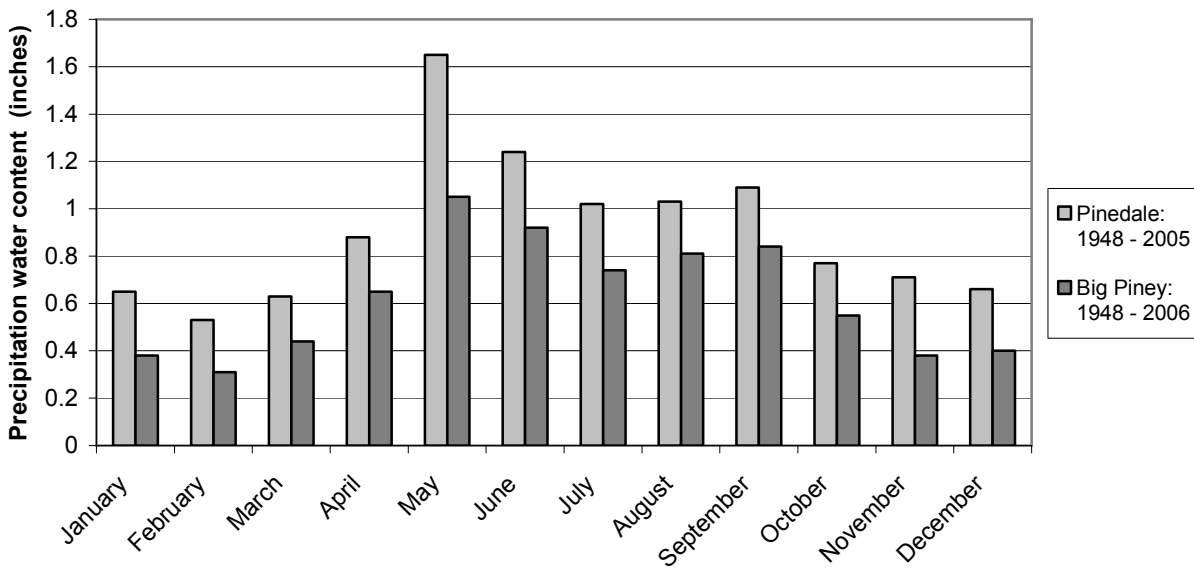
Data taken from Western Regional Climate Center

Figure 3-3. Mean Monthly Maximum Temperature Trend in Big Piney, Wyoming



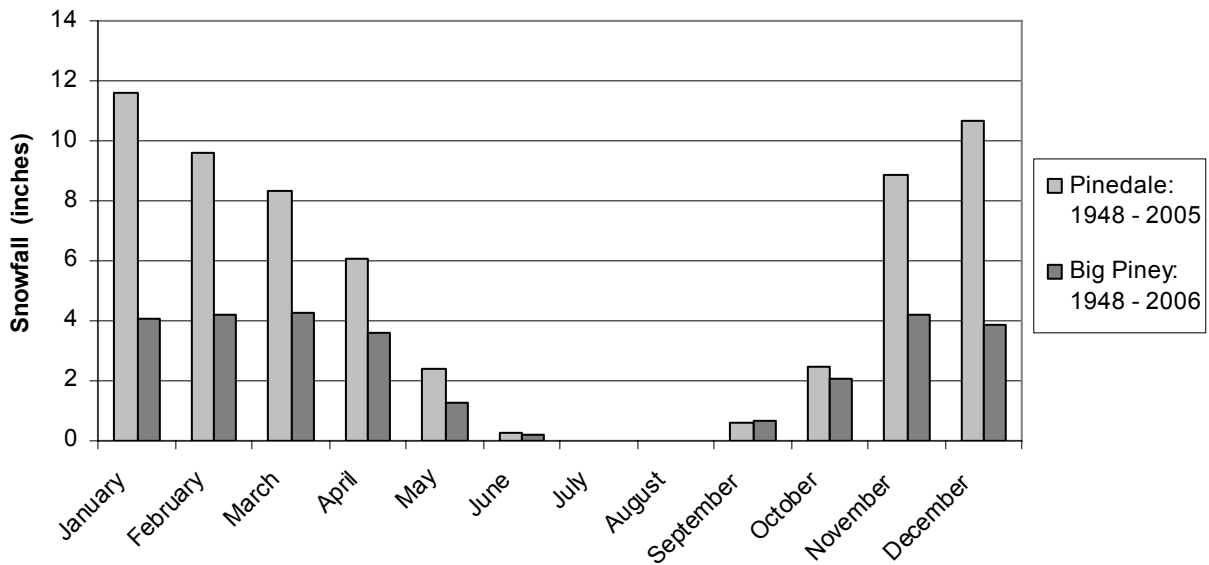
Data taken from Western Regional Climate Center

Figure 3-4. Mean Monthly Precipitation in the Pinedale Region



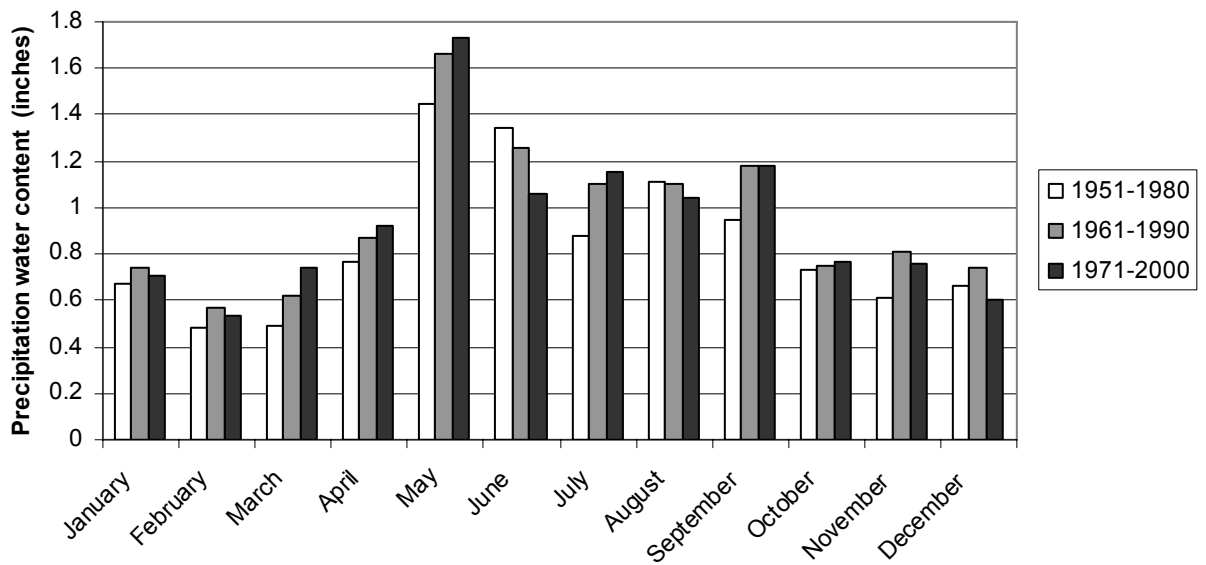
Data taken from Western Regional Climate Center

Figure 3-5. Mean Monthly Snowfall in the Pinedale Region



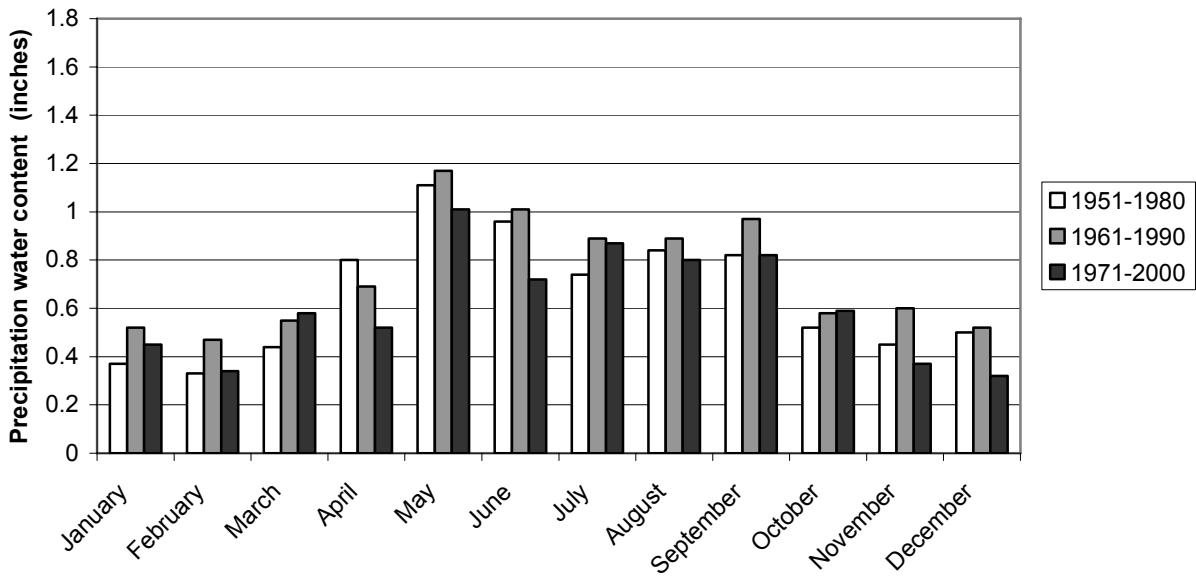
Data taken from Western Regional Climate Center

Figure 3-6. Mean Monthly Precipitation Trend in Pinedale, Wyoming



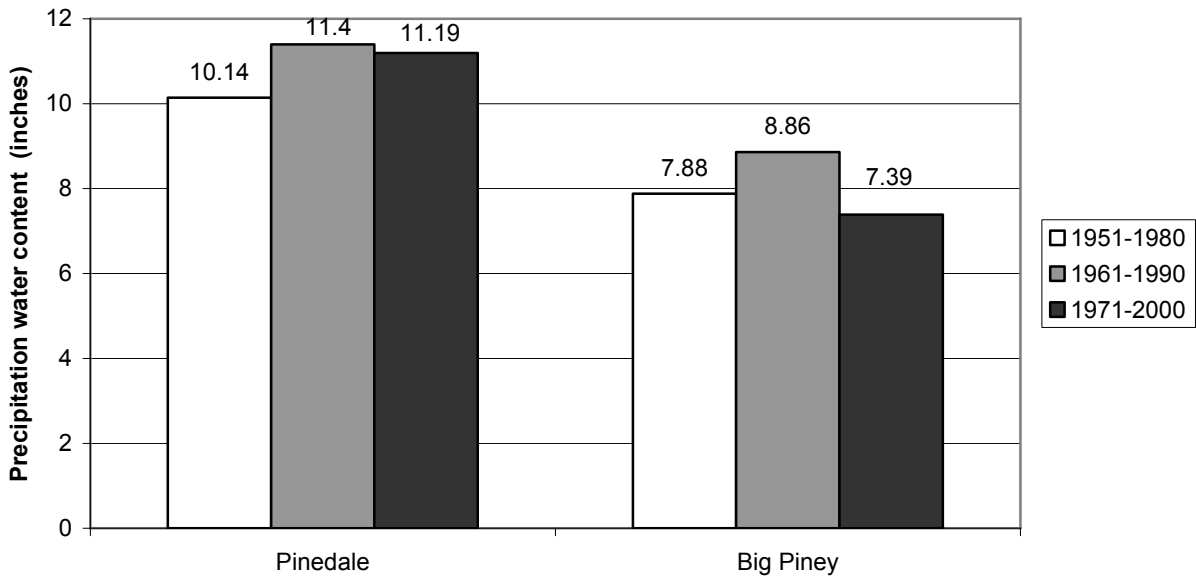
Data taken from Western Regional Climate Center

Figure 3-7. Mean Monthly Precipitation Trend in Big Piney, Wyoming



Data taken from Western Regional Climate Center

Figure 3-8. Mean Annual Precipitation Trend in the Pinedale Region



Data taken from Western Regional Climate Center

Figure 3-9. Capacity to Disperse Air Pollutants in Rock Springs, Wyoming

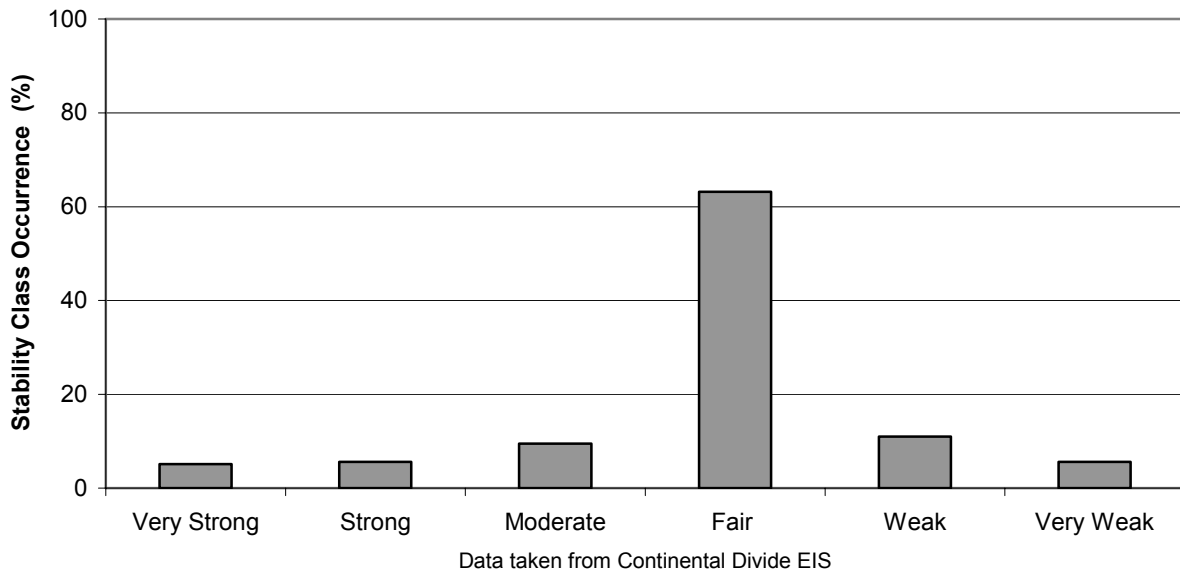


Figure 3-10. Wind Rose for Pinedale, Wyoming

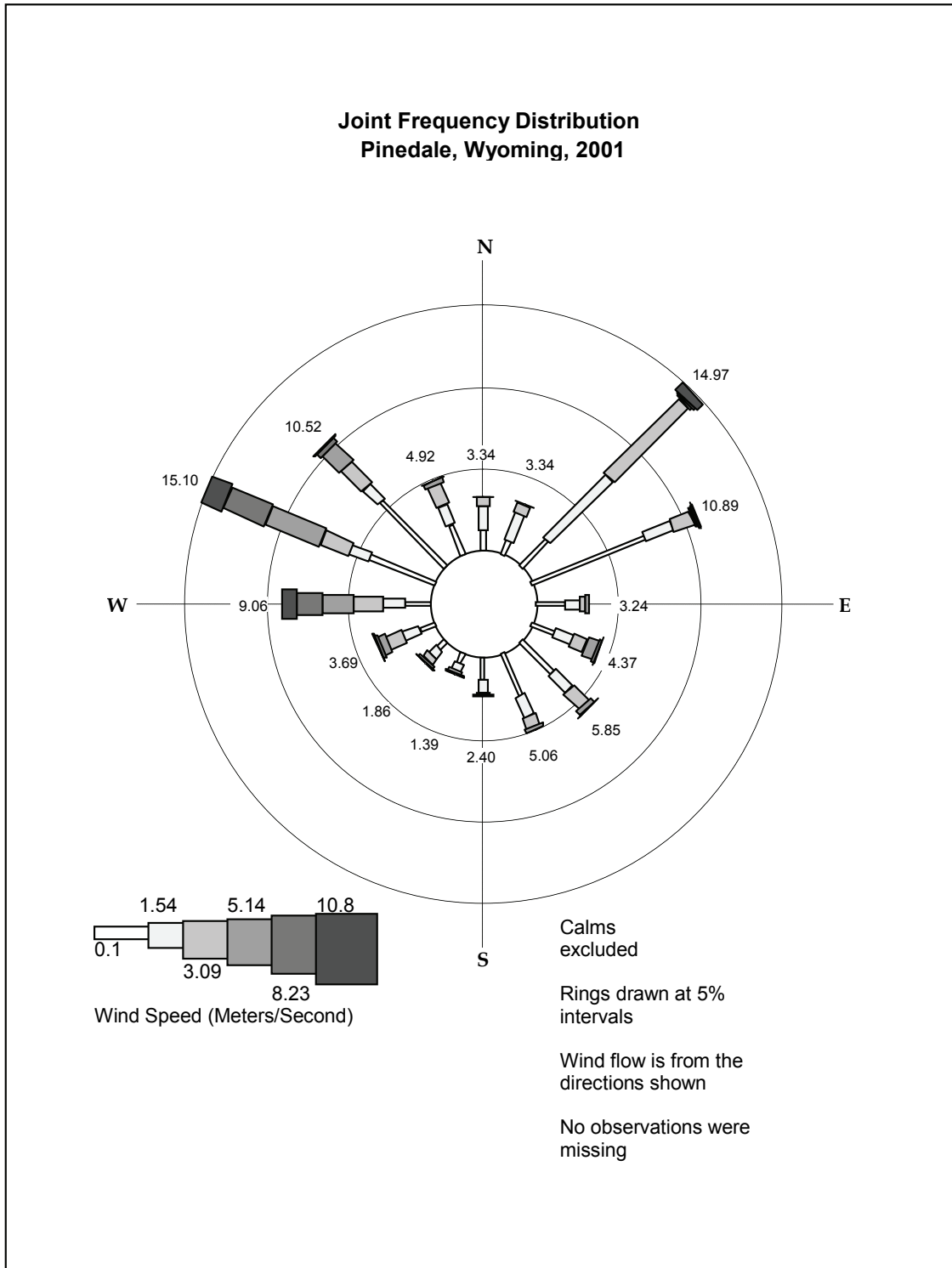


Figure 3-11. Mean Annual Ozone Concentrations near Pinedale and in Yellowstone National Park

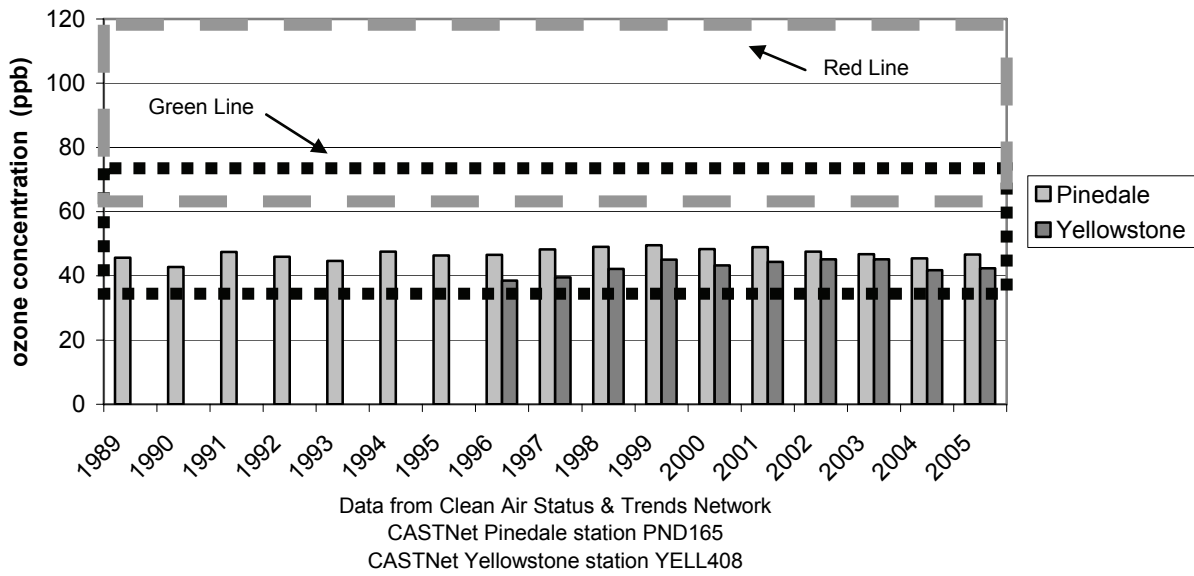


Figure 3-12. Annual Visibility (dv) in Bridger Wilderness

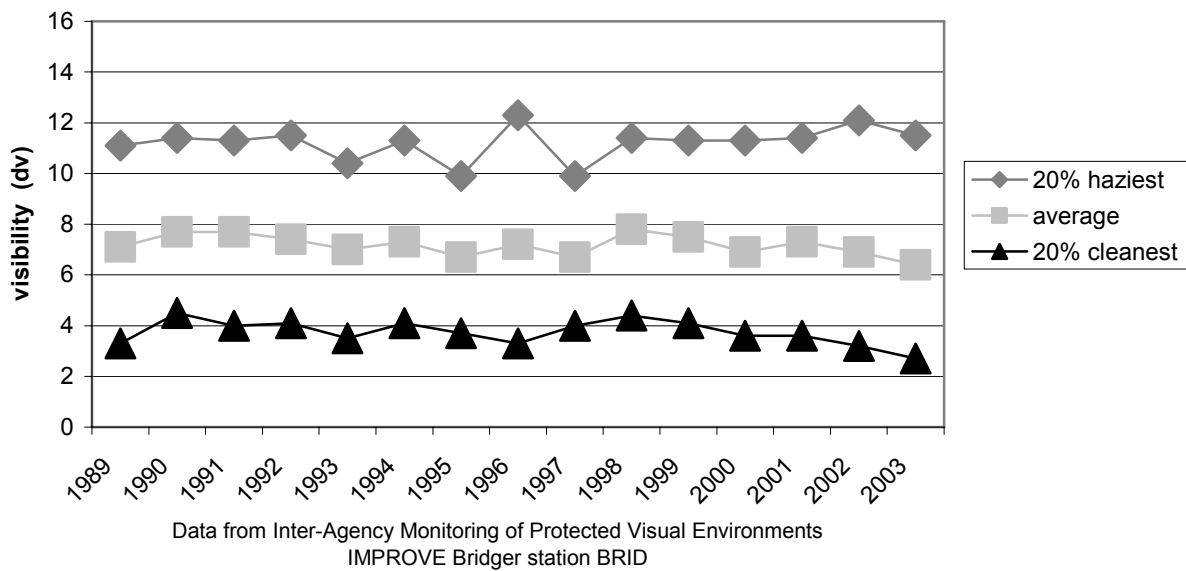


Figure 3-13. Visibility in Bridger Wilderness, Wyoming Reconstructed Fine Mass (1 Year Average)

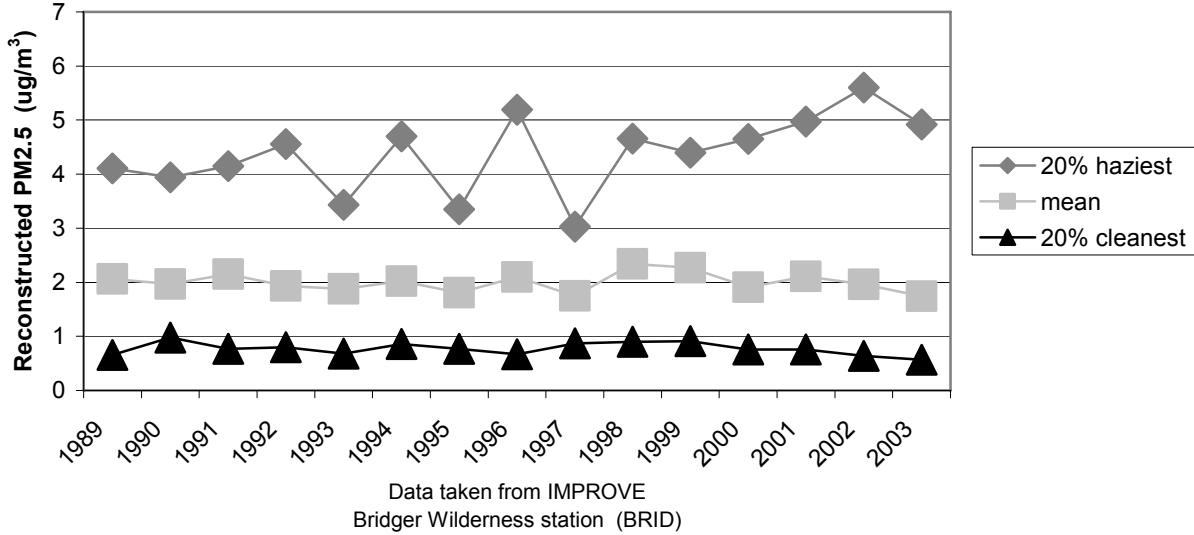


Figure 3-14. Mean Annual Precipitation pH in the Pinedale Region

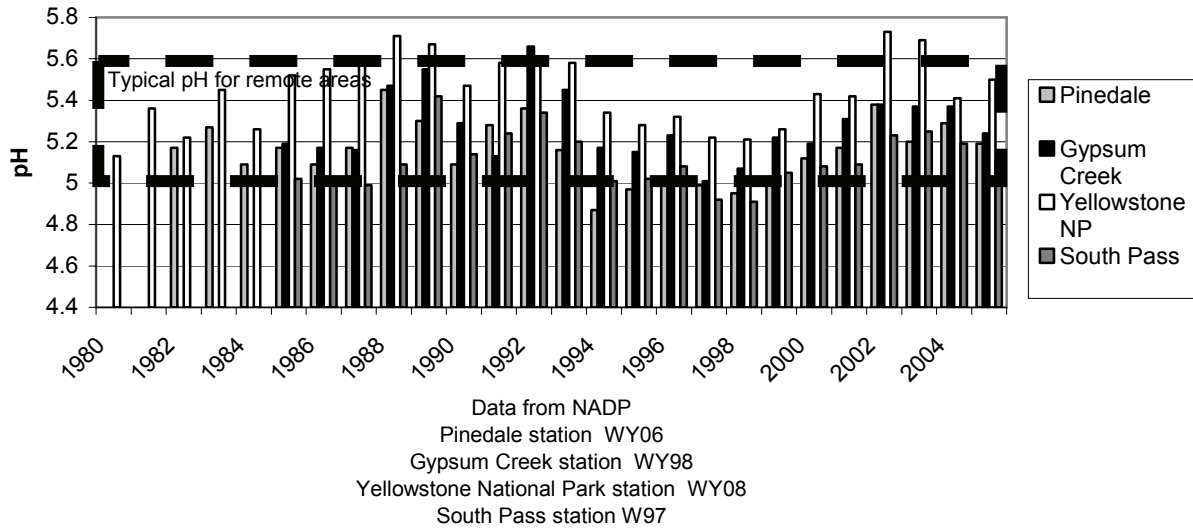


Figure 3-15. Mean Annual Wet Deposition near Pinedale, Wyoming

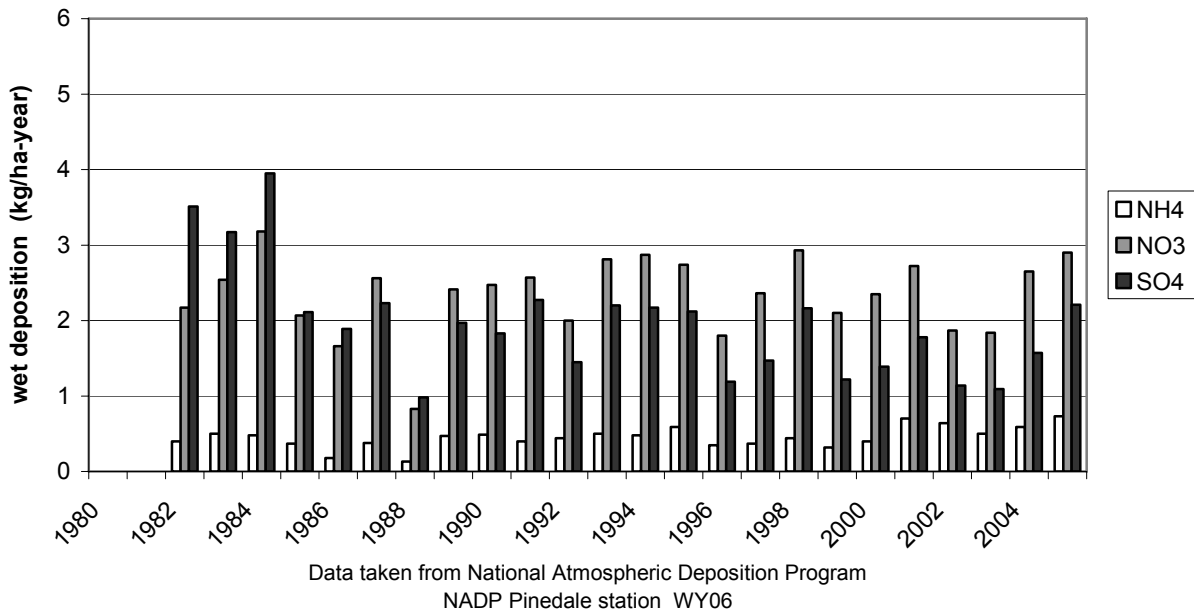


Figure 3-16. Mean Annual Wet Deposition near Gypsum Creek, Wyoming

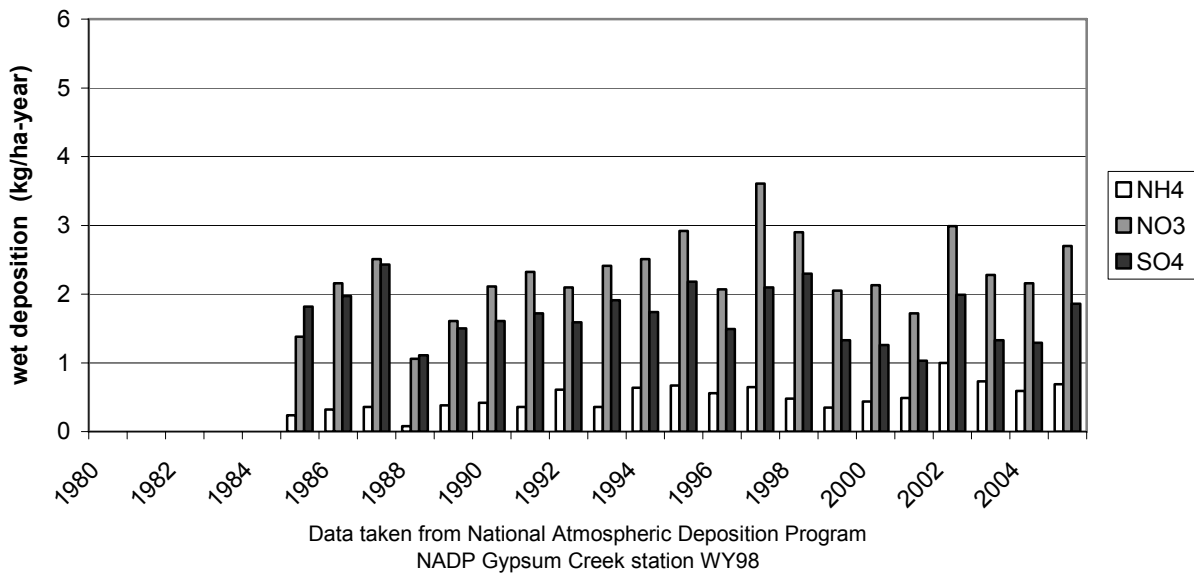


Figure 3-17. Mean Annual Wet Deposition in Yellowstone National Park

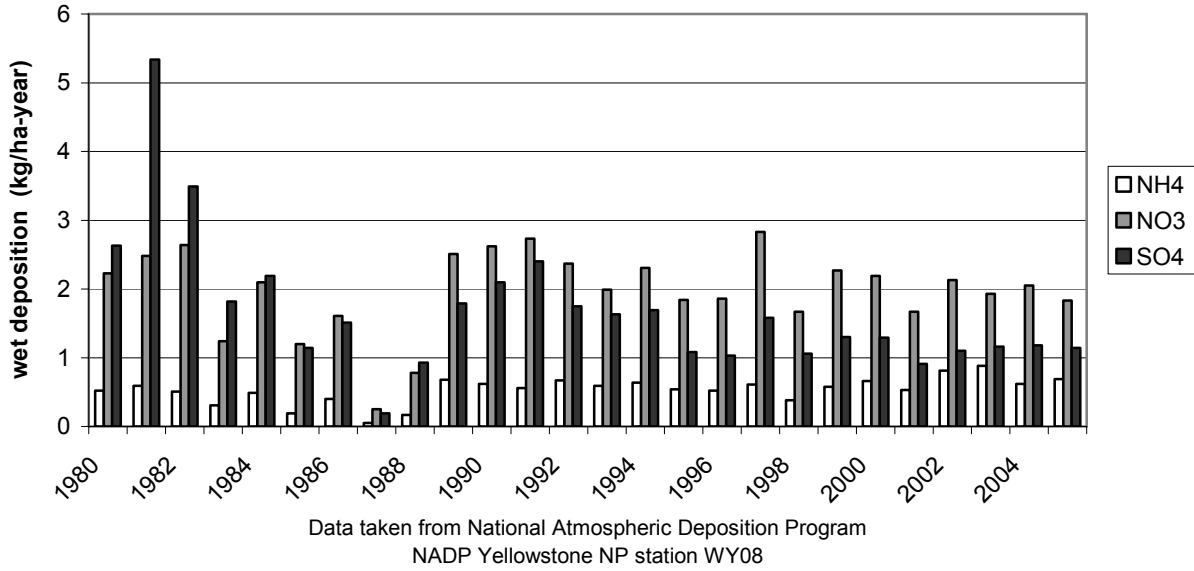


Figure 3-18. Mean Annual Wet Deposition near South Pass, Wyoming

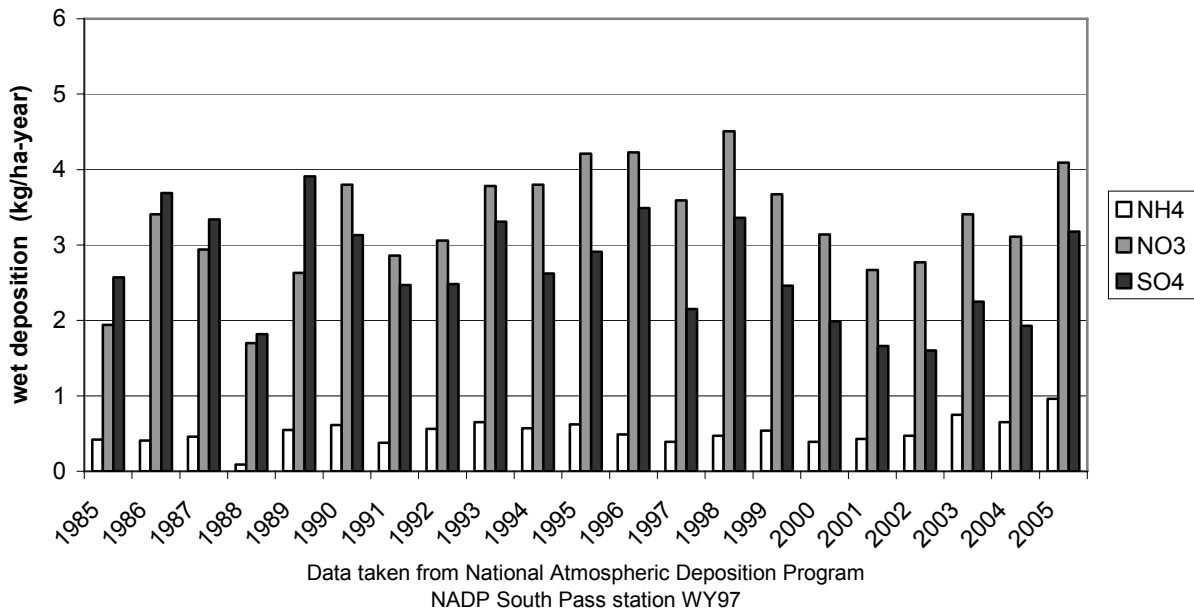


Figure 3-19. Mean Annual Dry Deposition near Pinedale, Wyoming

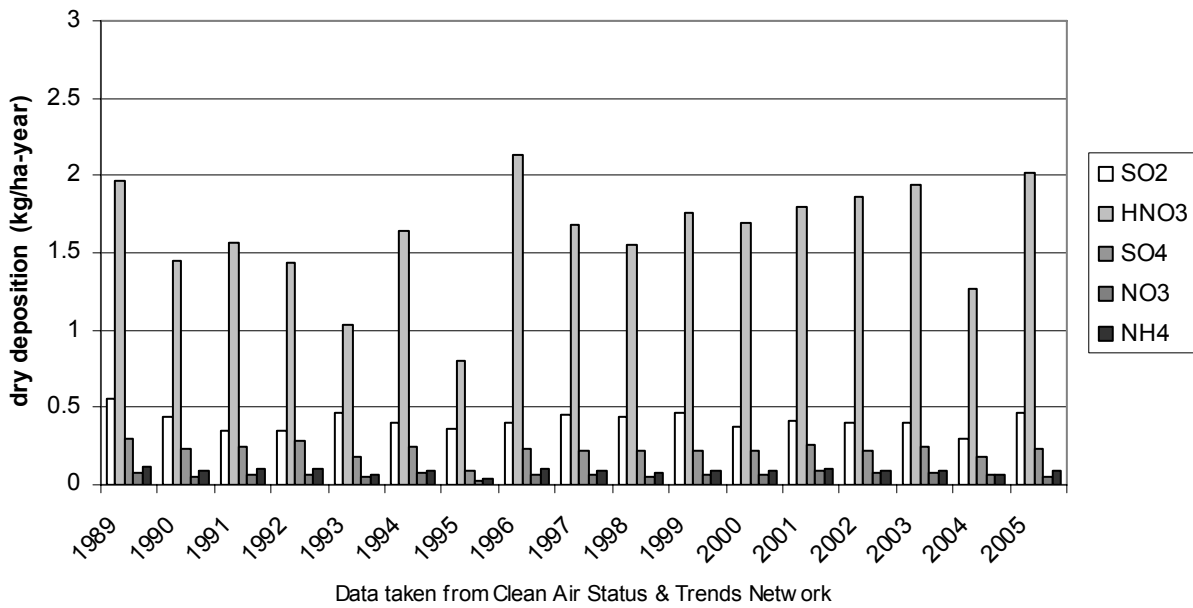


Figure 3-20. Mean Annual Dry Deposition in Yellowstone National Park

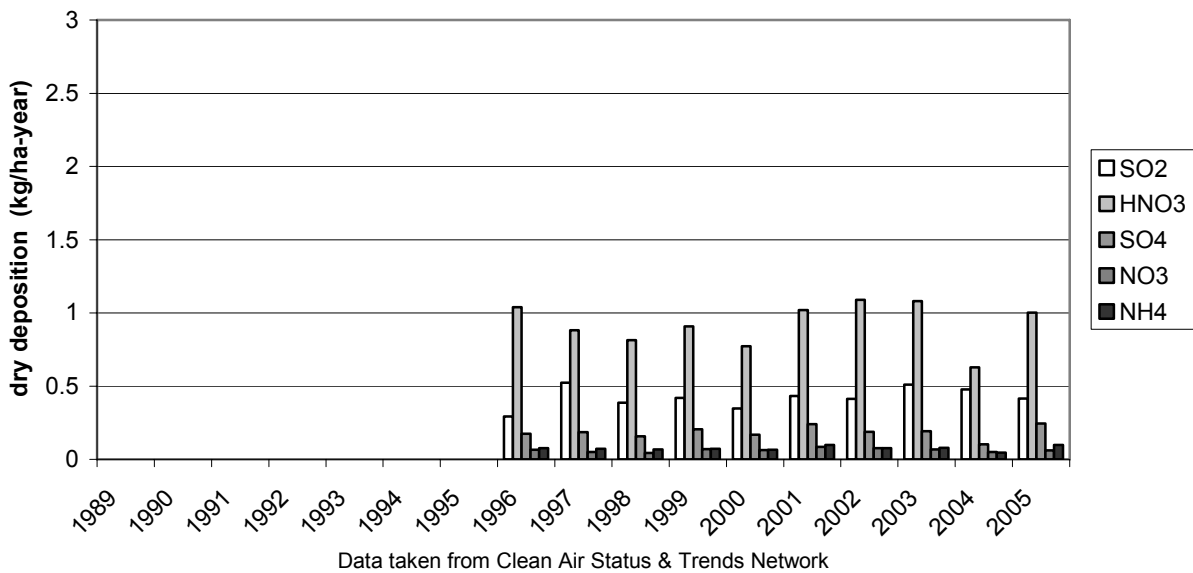


Figure 3-21. Mean Annual Concentrations of Nitrogen Compounds near Pinedale, Wyoming

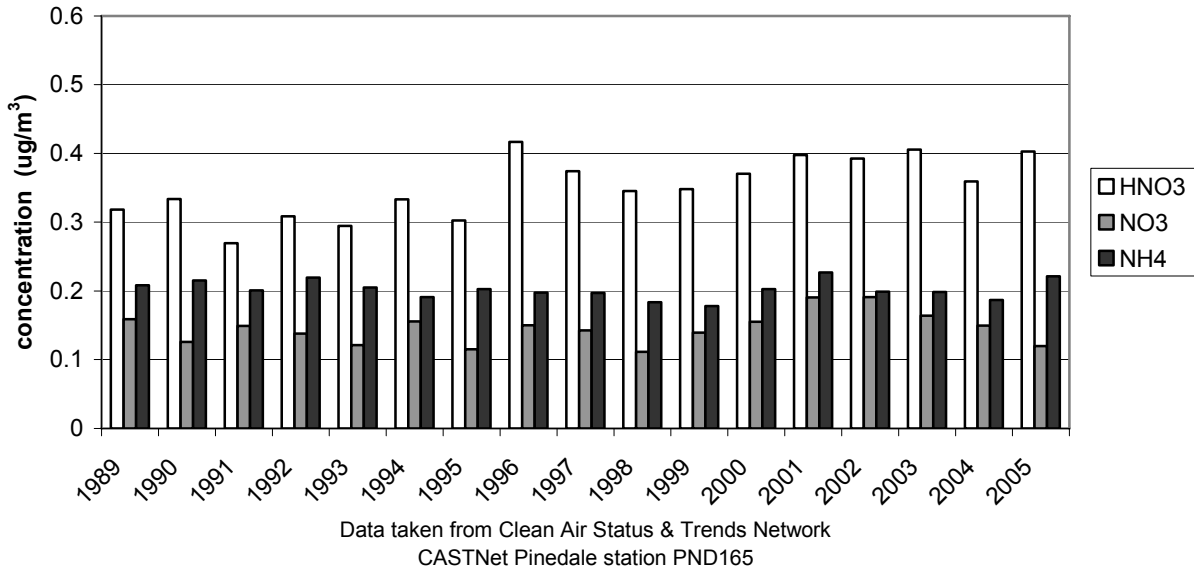


Figure 3-22. Mean Annual Concentrations of Nitrogen Compounds in Yellowstone National Park

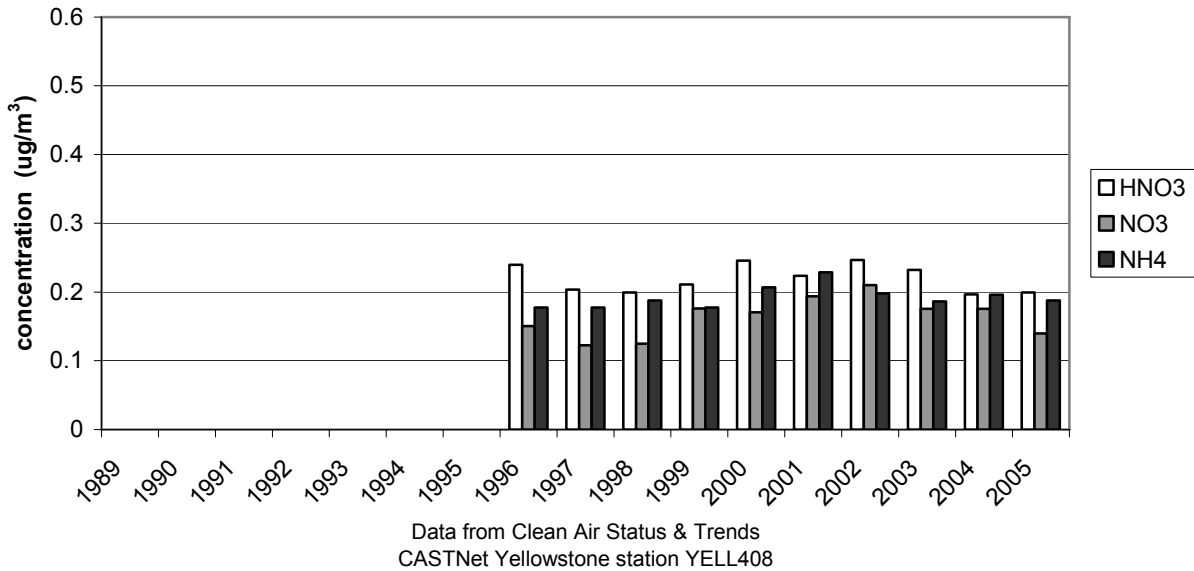


Figure 3-23. Weekly Concentrations of Nitrate near Pinedale, Wyoming

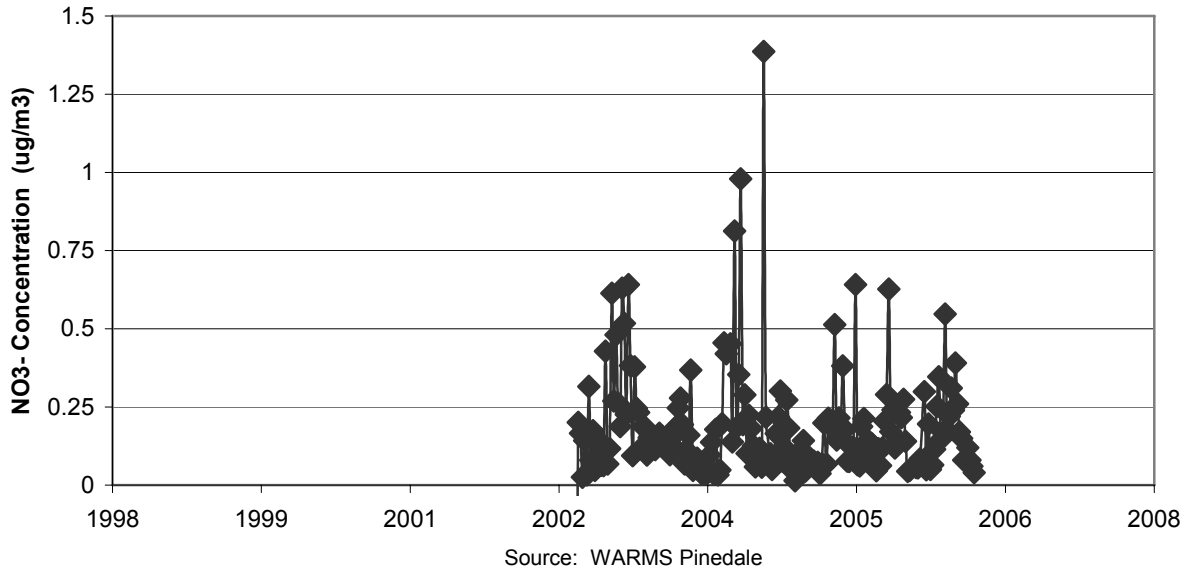


Figure 3-24. Weekly Concentrations of Ammonium near Pinedale, Wyoming

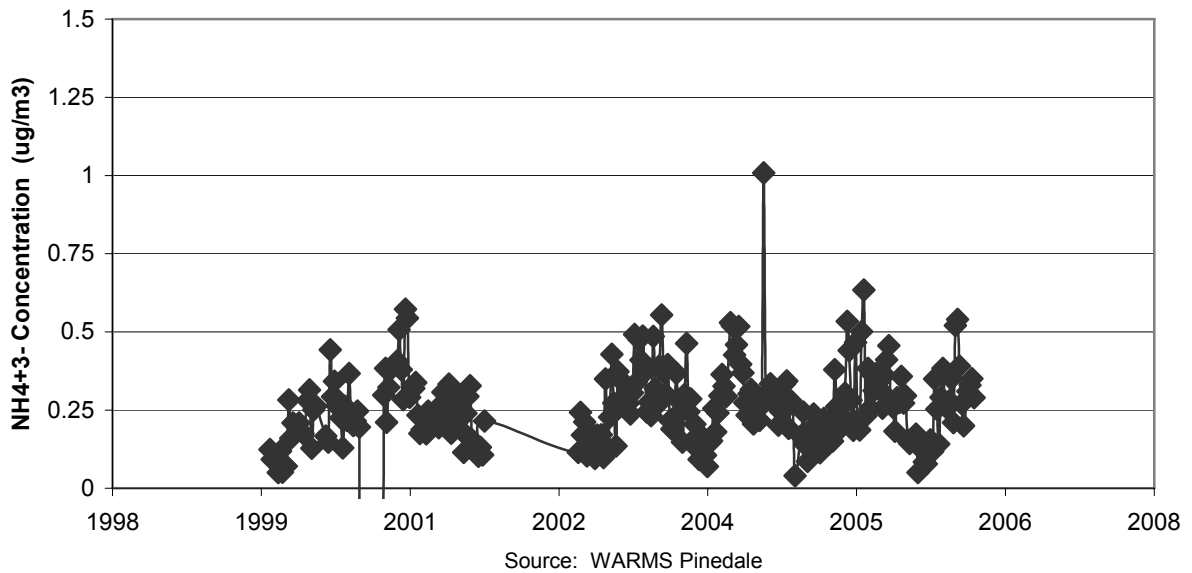


Figure 3-25. Mean Annual Concentrations of Sulfur Compounds near Pinedale, Wyoming

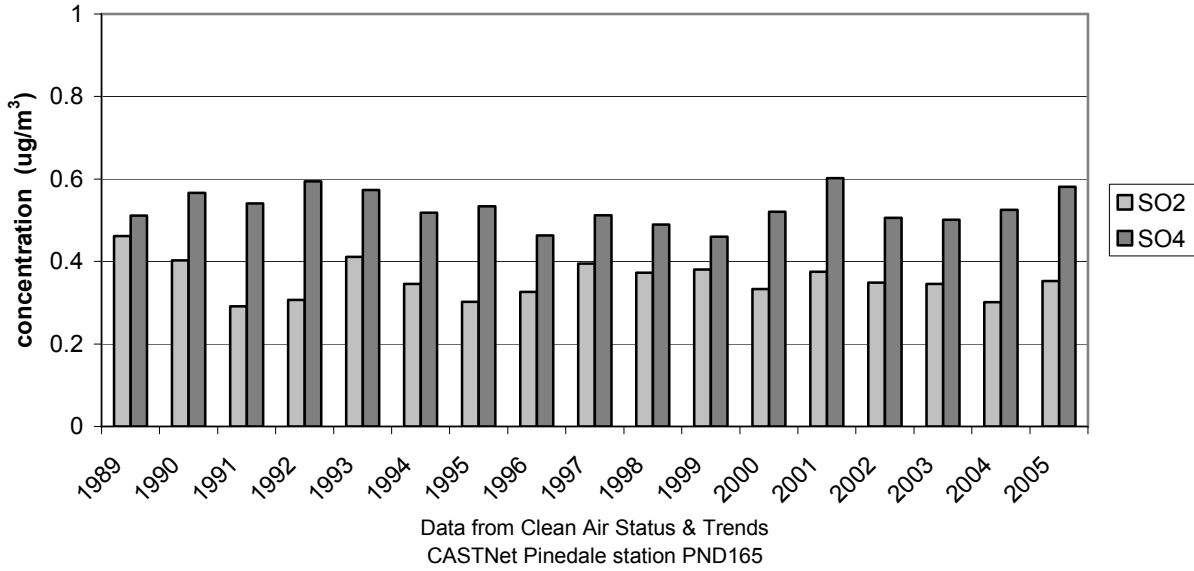


Figure 3-26. Mean Annual Concentrations of Sulfur Compounds in Yellowstone National Park

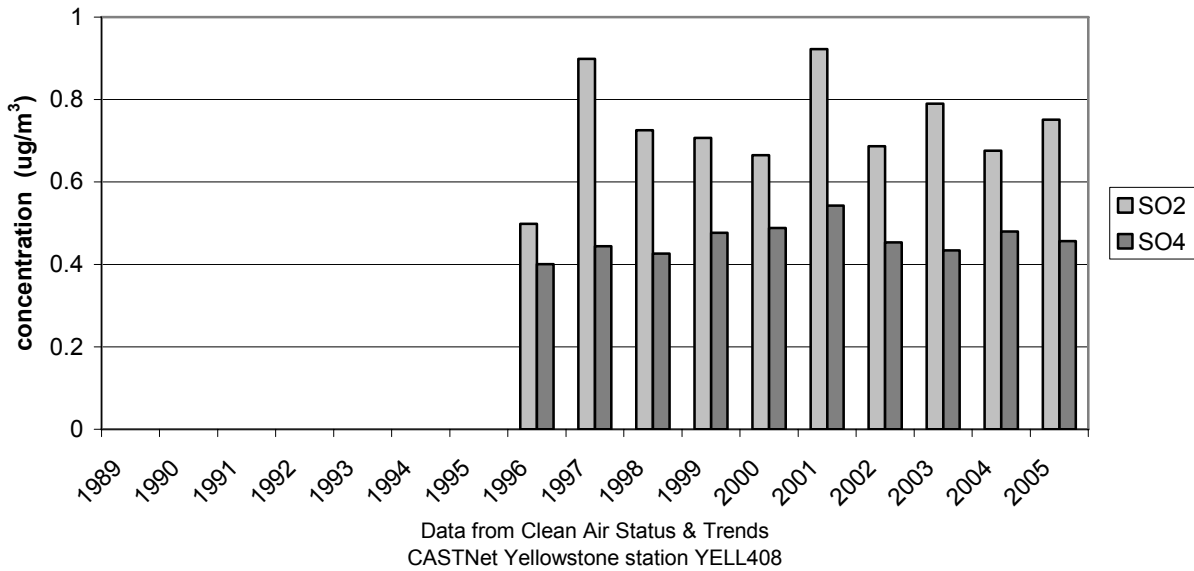


Figure 3-27. Weekly Concentrations of Sulfur Dioxide near Pinedale, Wyoming

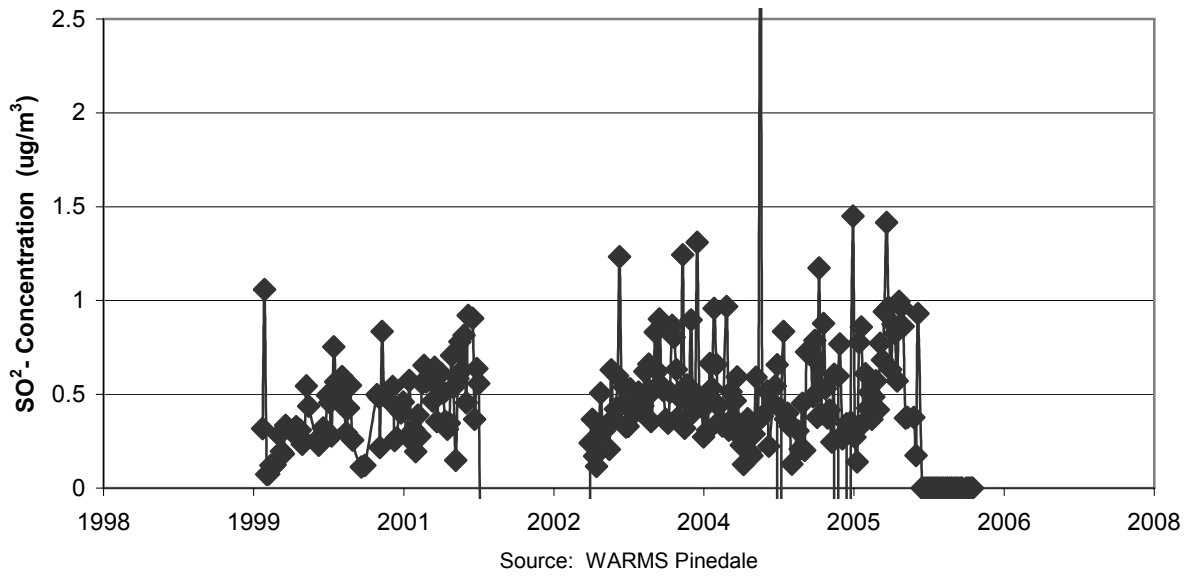


Figure 3-28. Weekly Concentrations of Sulfate near Pinedale, Wyoming

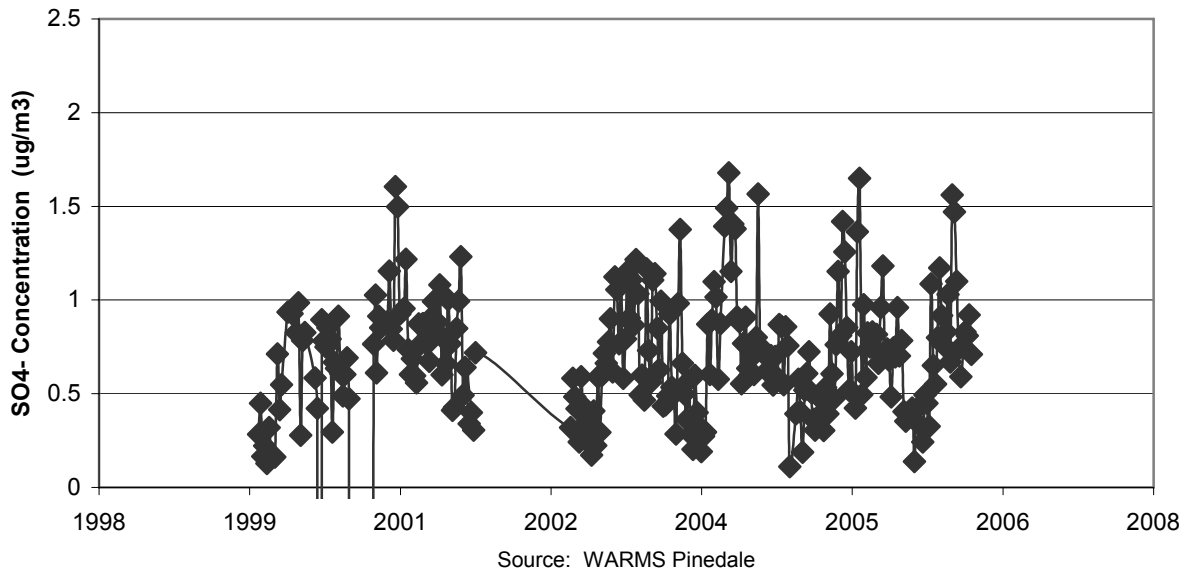


Figure 3-29. Mean Annual Total Nitrogen Deposition near Pinedale, Wyoming

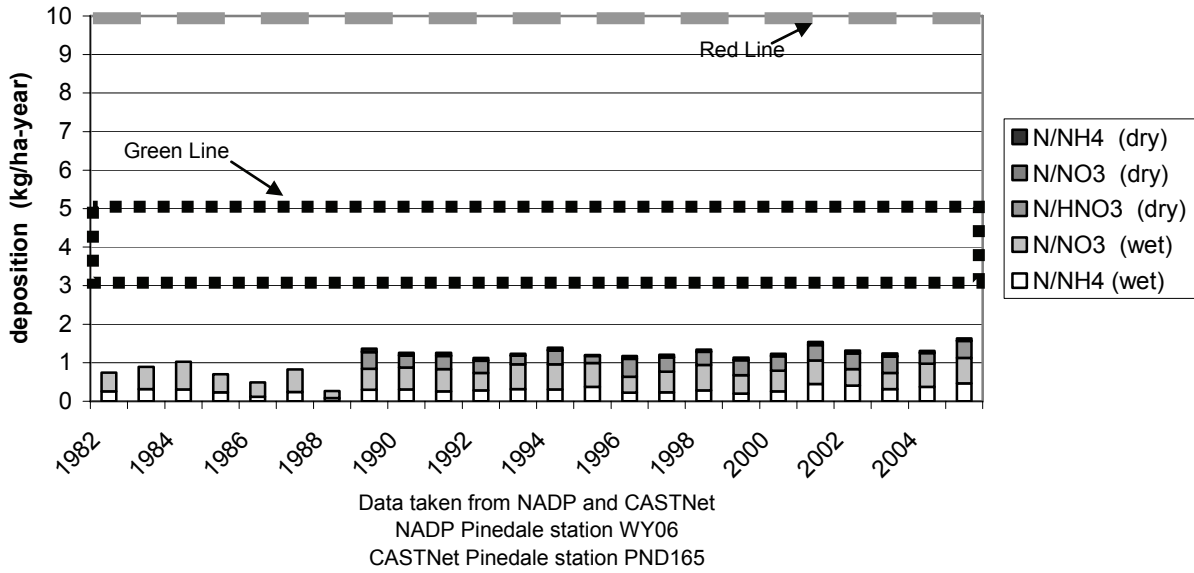


Figure 3-30. Mean Annual Total Sulfur Deposition near Pinedale, Wyoming

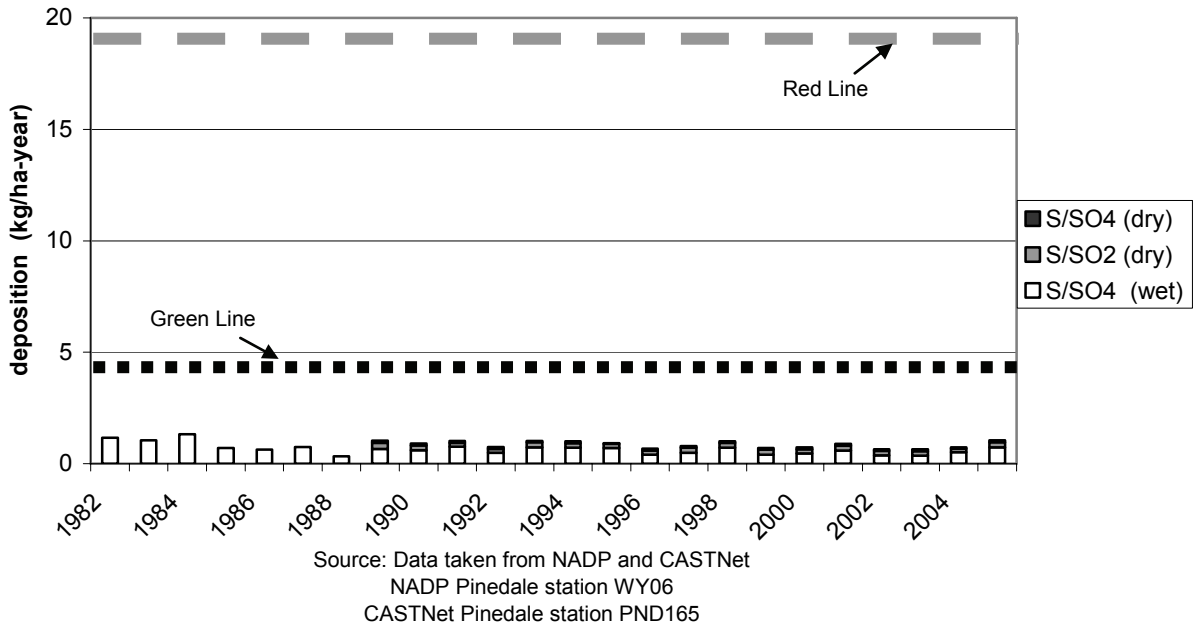
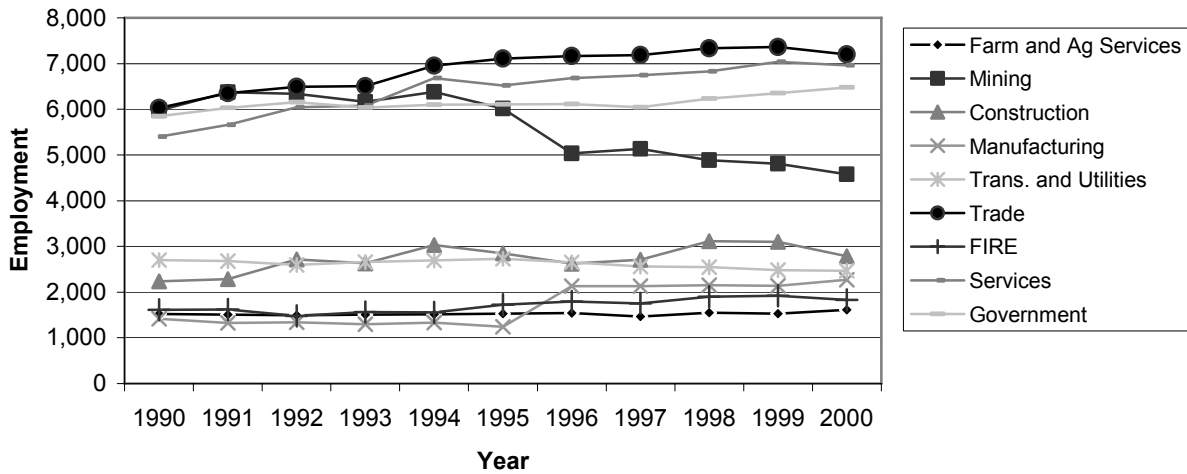
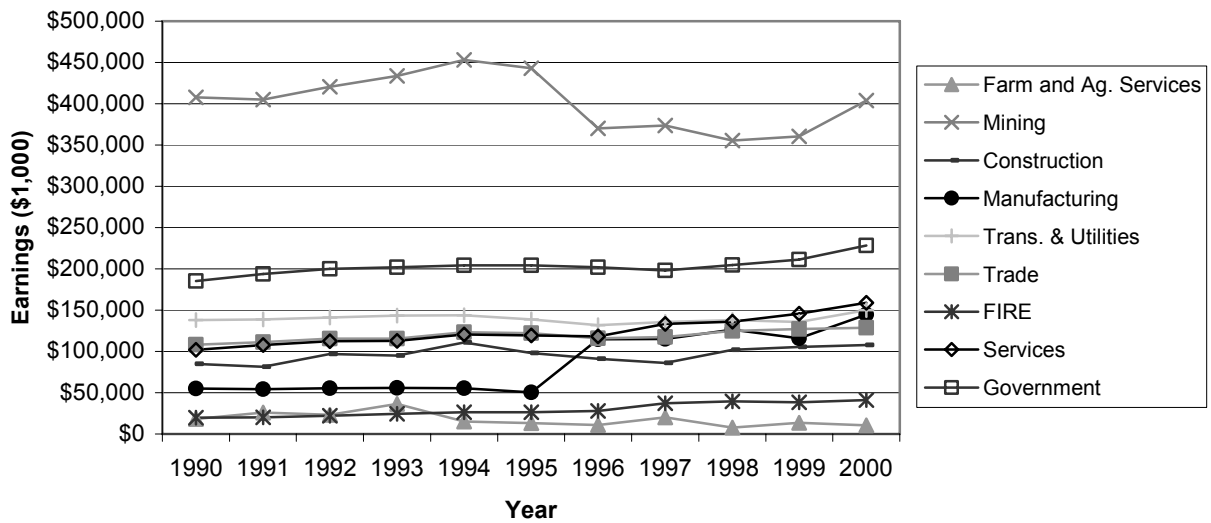


Figure 3-31. Employment Trends by Industry for 1990-2000



Source: Bureau of Economic Analysis, Regional Economic Accounts SIC

Figure 3-32. Earnings Trends by Industry 1990-2000 (2005\$)



Source: Bureau of Economic Analysis, Regional Economic Accounts SIC

Figure 3-33. Historical Natural Gas Production in the Study Area

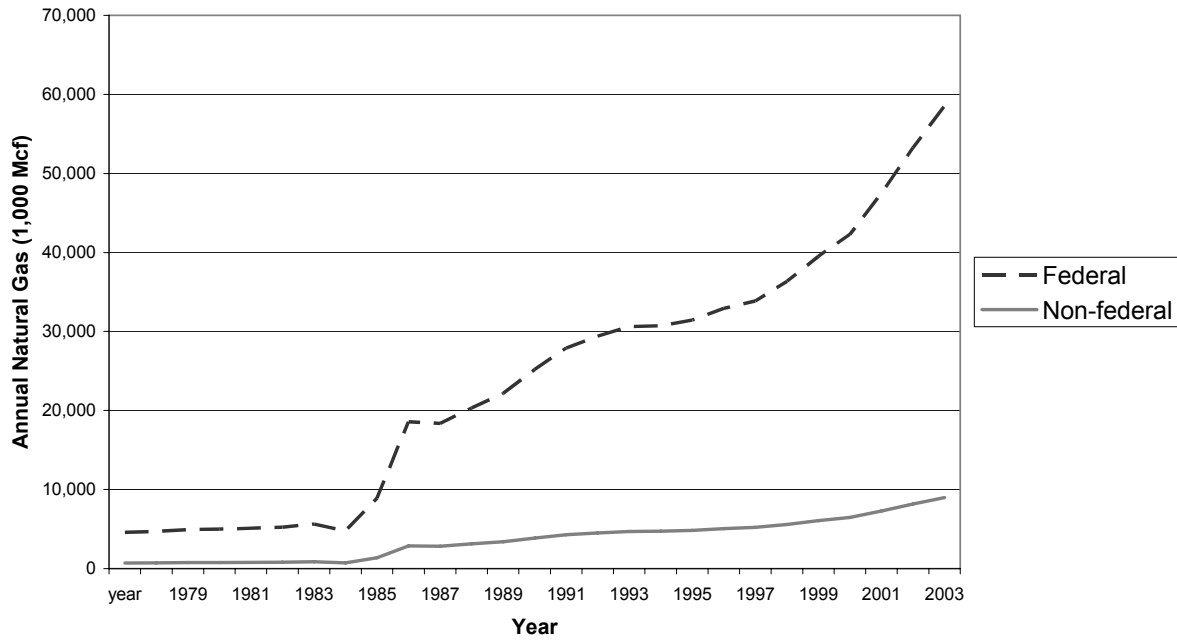


Figure 3-34. Change in Housing vs. Population in Sublette County and Wyoming

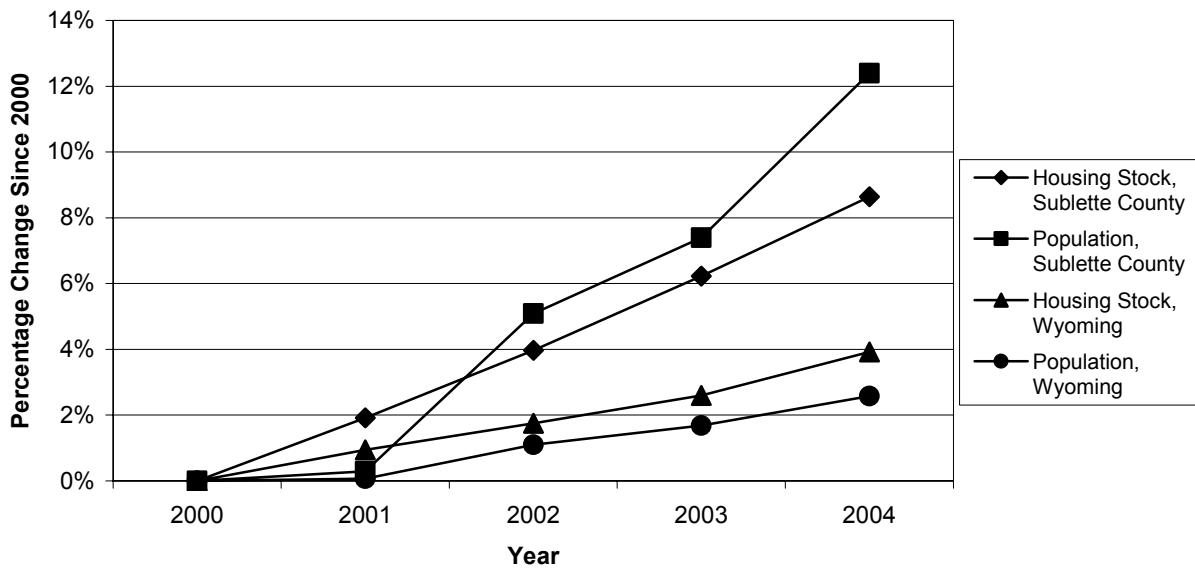


Figure 3-35. Historical Oil Production in the Study Area

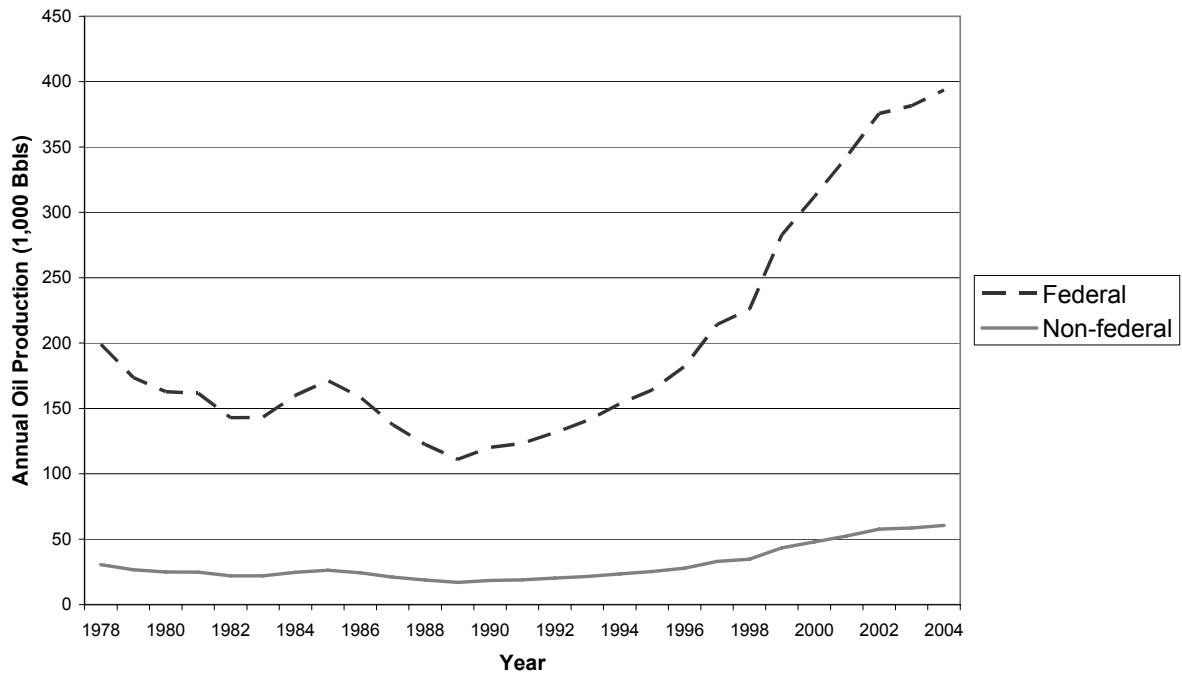
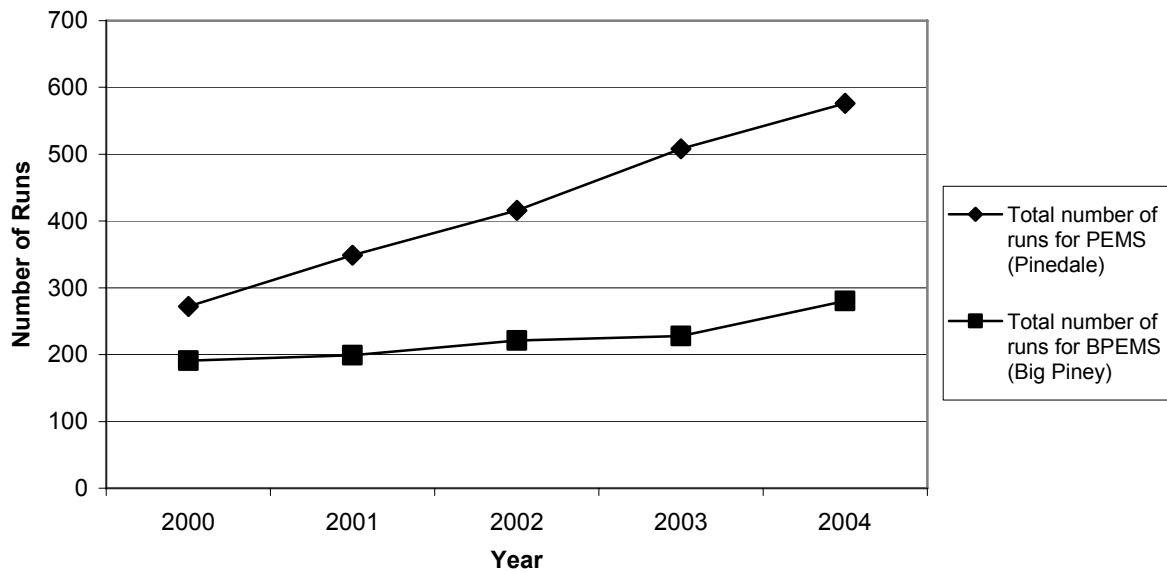
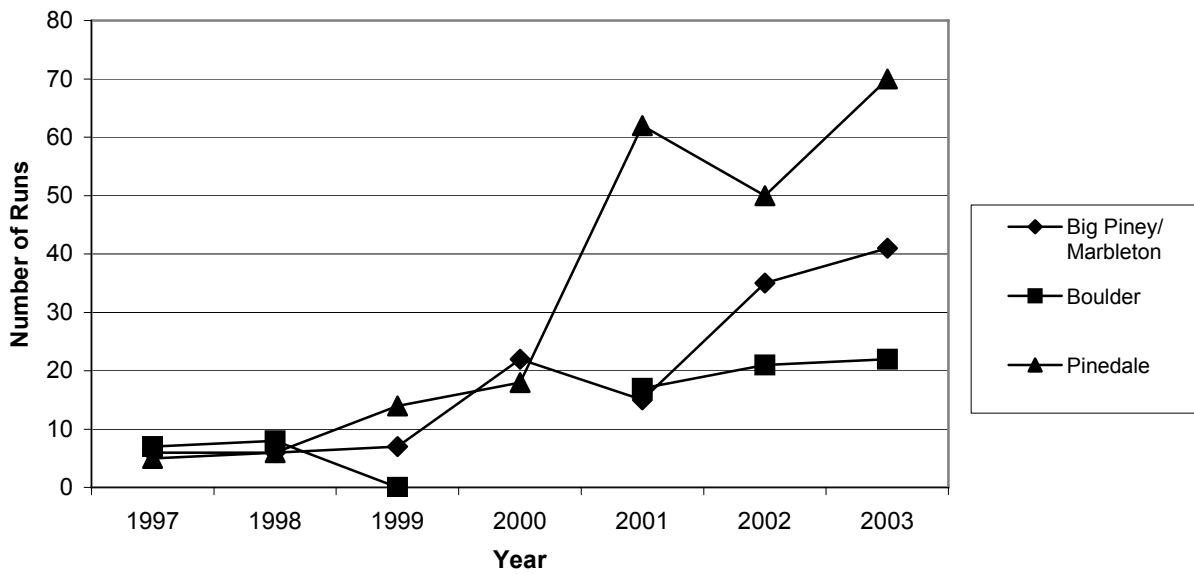


Figure 3-36. Total Emergency Medical Service Runs



Source: Sublette County Planning Commission 2005

Figure 3-37. Total Fire Department Runs



Source: Sublette County Planning Commission 2005

Figure 3-38. Crime Rate for Sublette, Sweetwater, and Lincoln Counties and Wyoming

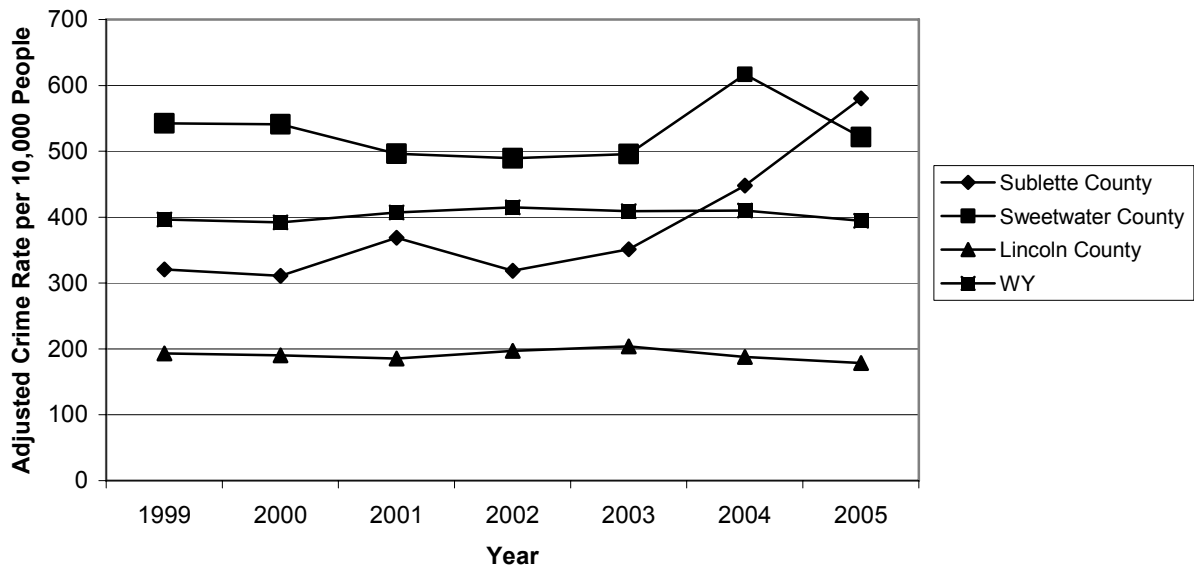


Figure 3-39. Assault Cases in Sublette, Sweetwater, and Lincoln Counties

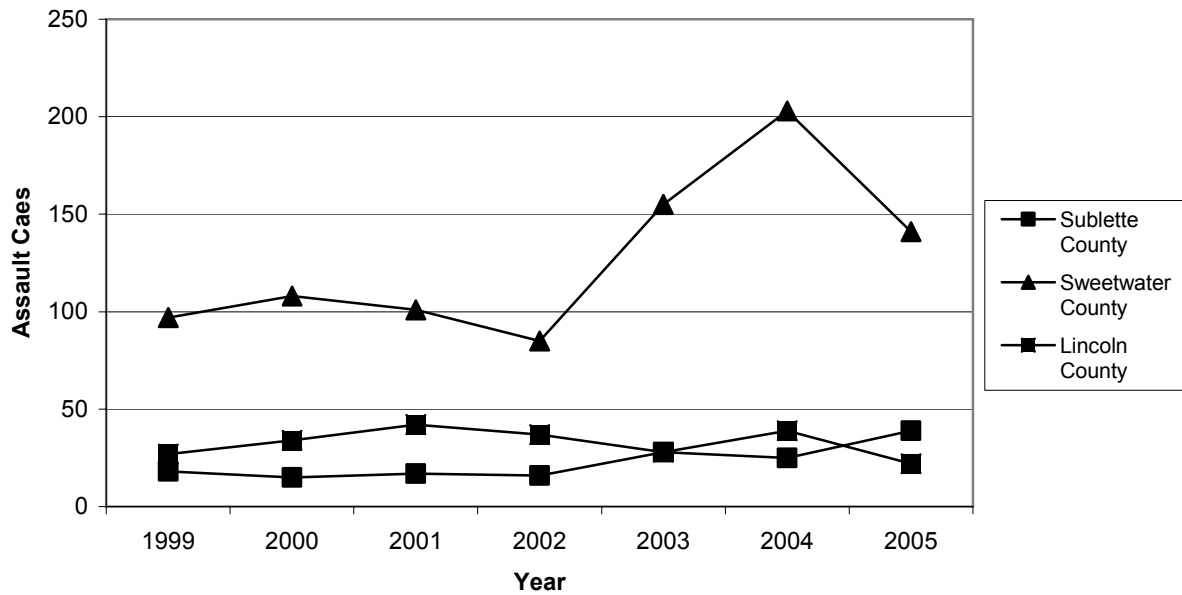


Figure 3-40. Domestic Violence in Sublette, Sweetwater and Lincoln Counties

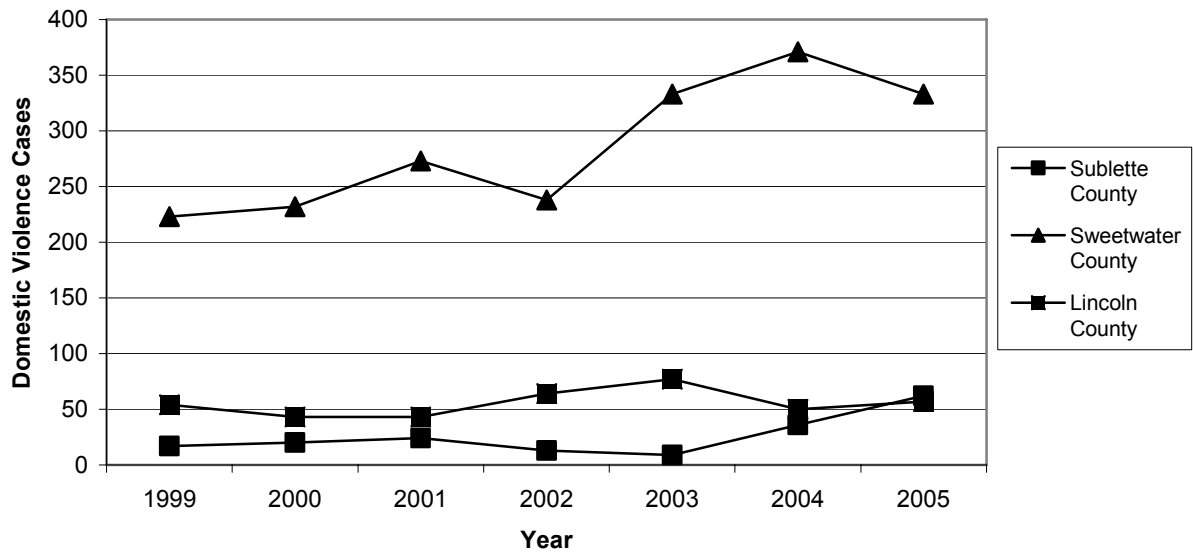


Figure 3-41. Sublette County Change in Arrests vs. Population, 1995-2004

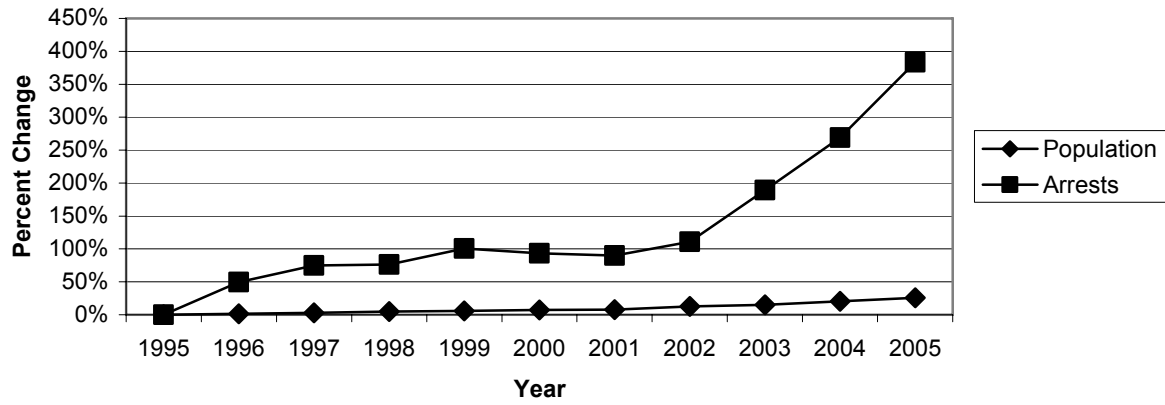


Figure 3-42. Perceptions of Tradeoffs Between Development and Wildlife Preservation

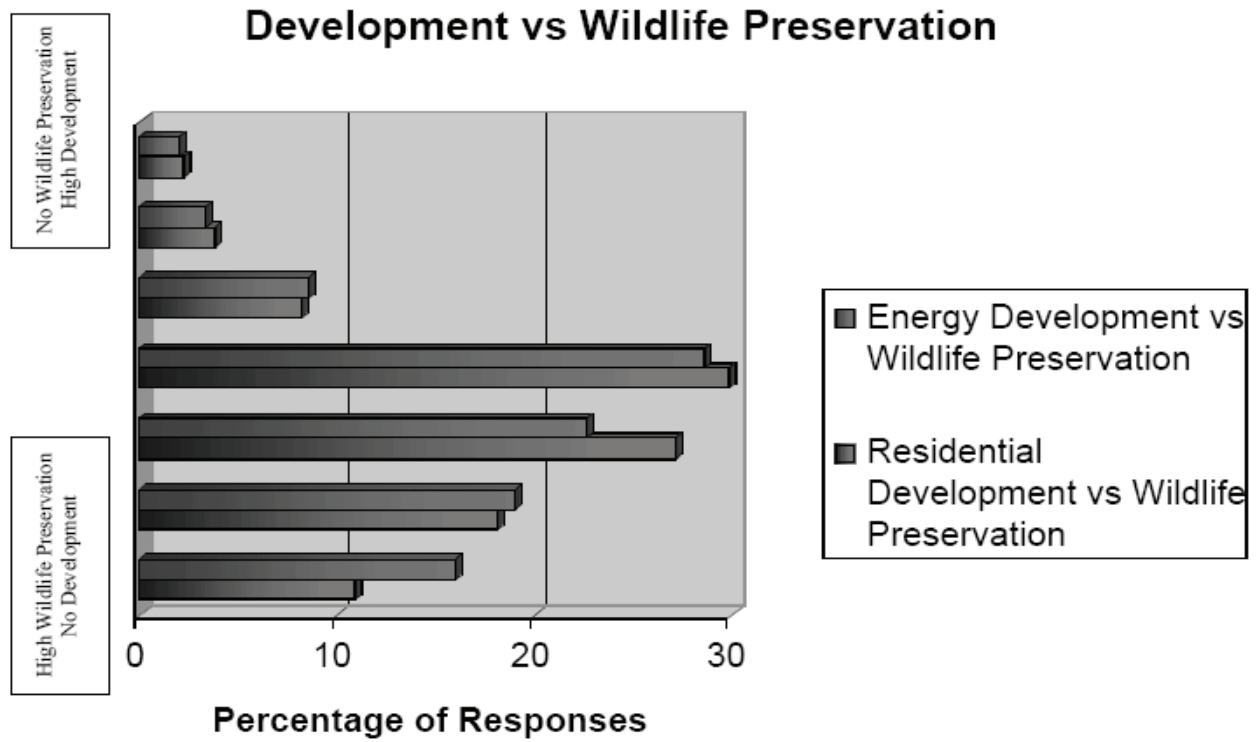


Figure 3-43. Concern, Expenditure, and Participation in Outdoor Activities

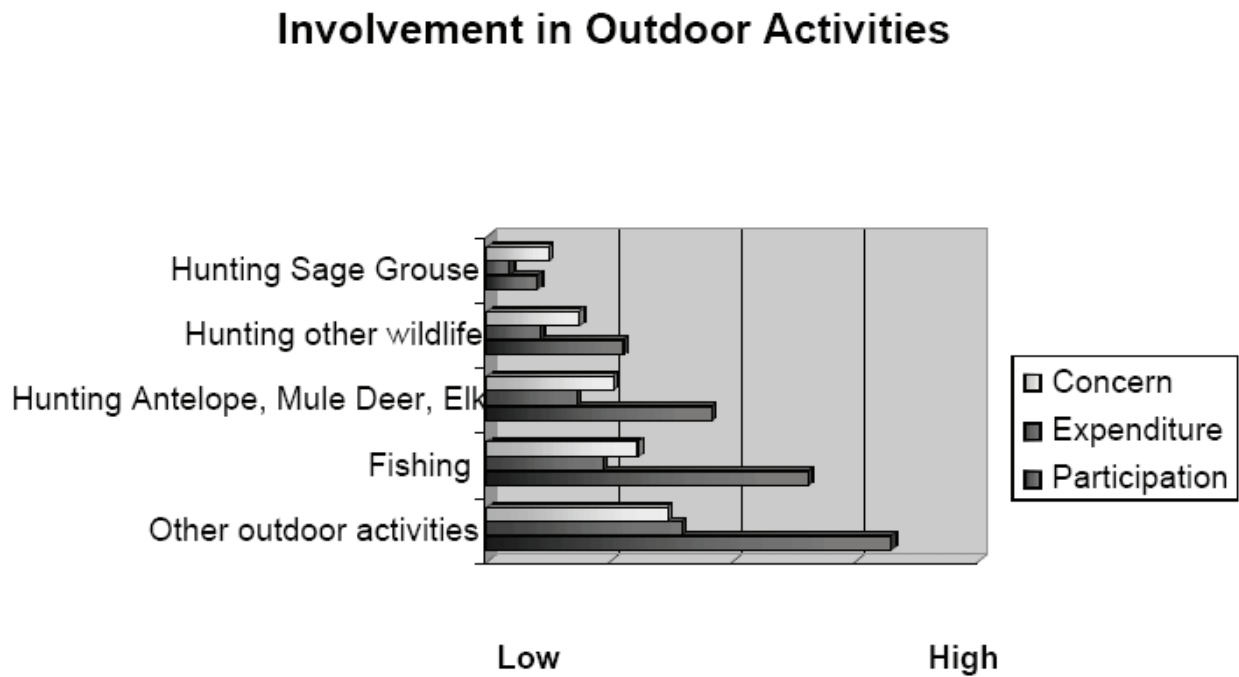


Figure 4-1. Summary of Total Potential BLM Emissions

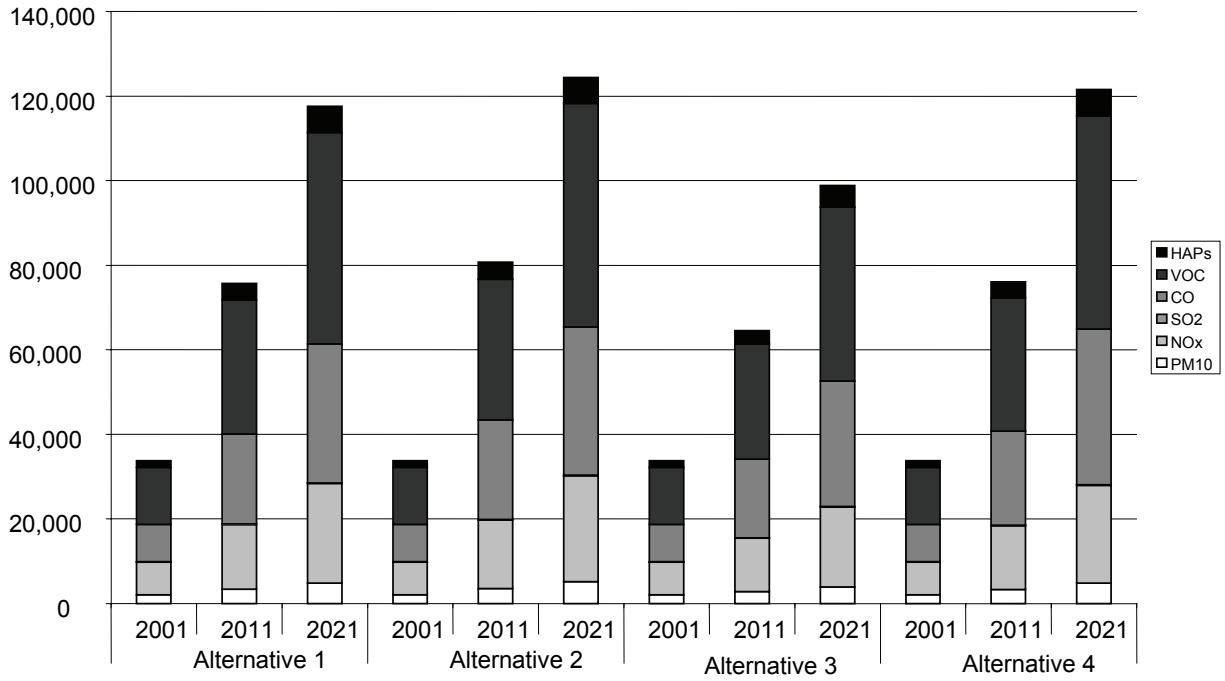


Figure 4-2. Average Employment by Alternative

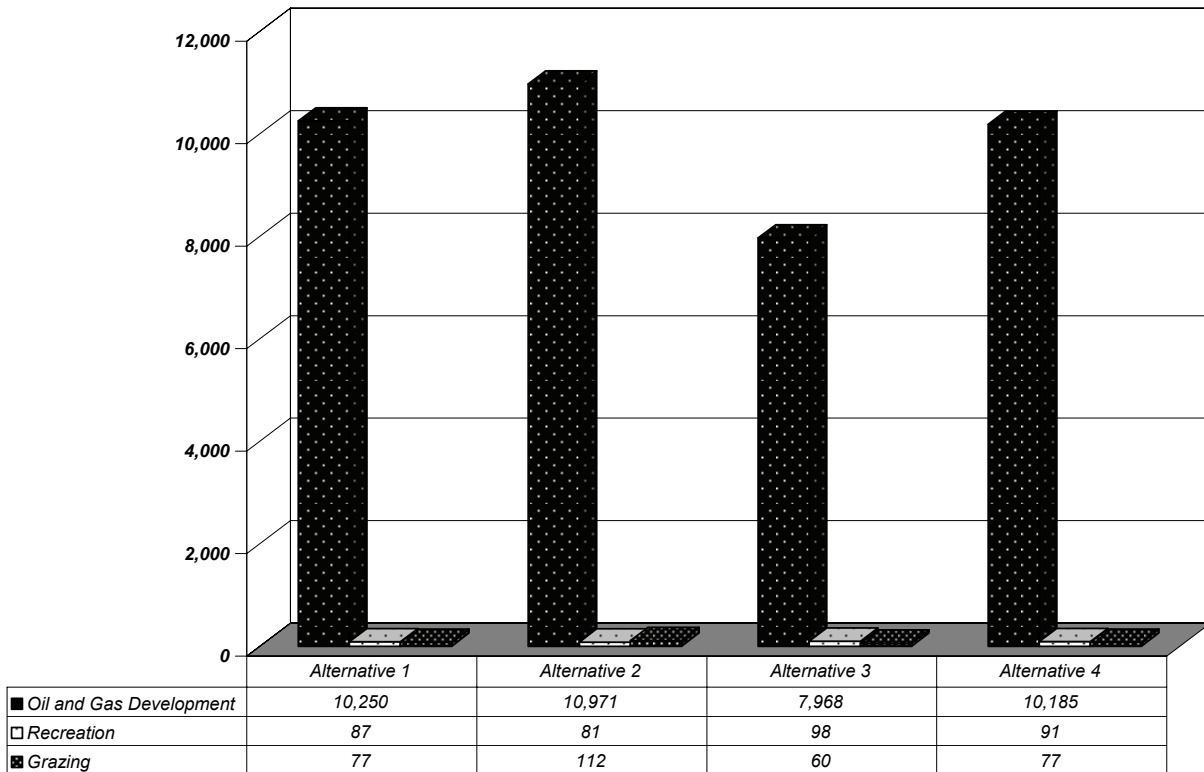


Figure 4-3. Total Estimated Earnings by Alternative (2005\$) (Reported in Thousands)

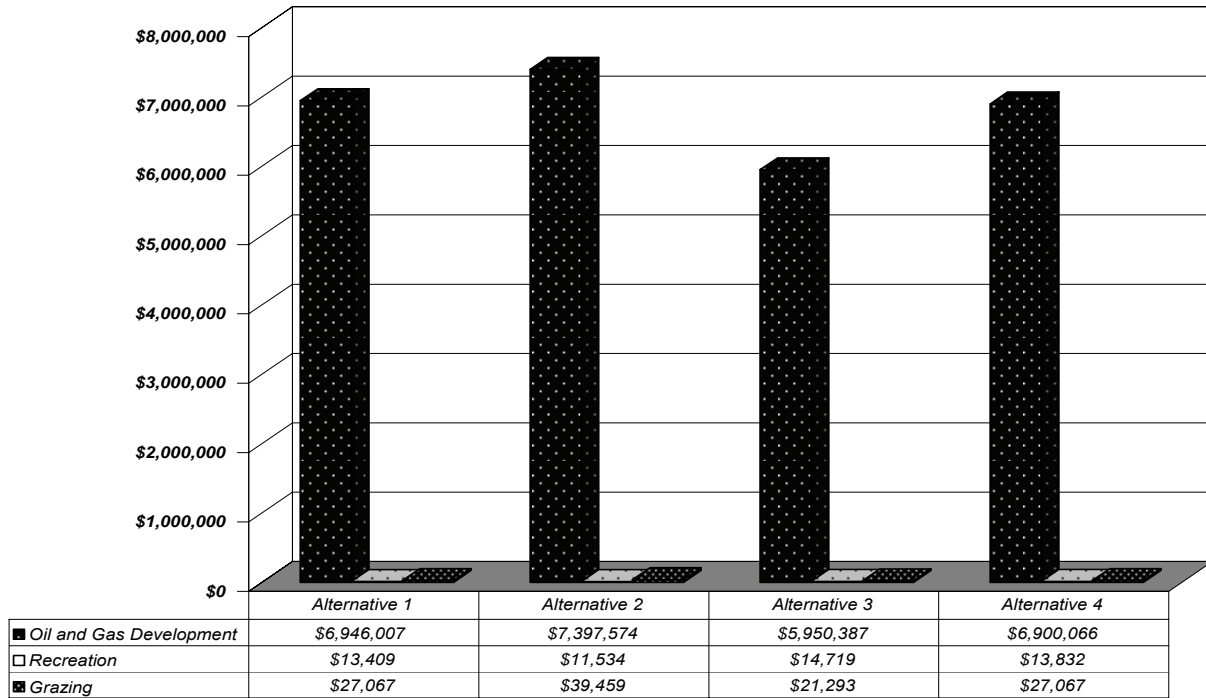


Figure 4-4. Ad Valorem Taxes by Alternative (2005\$)

