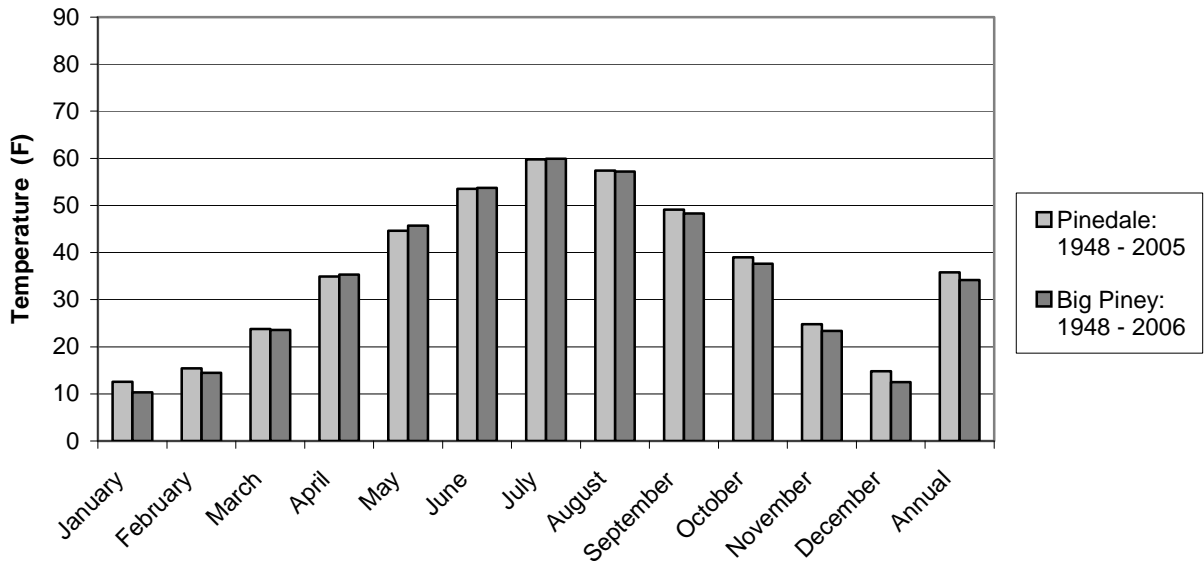


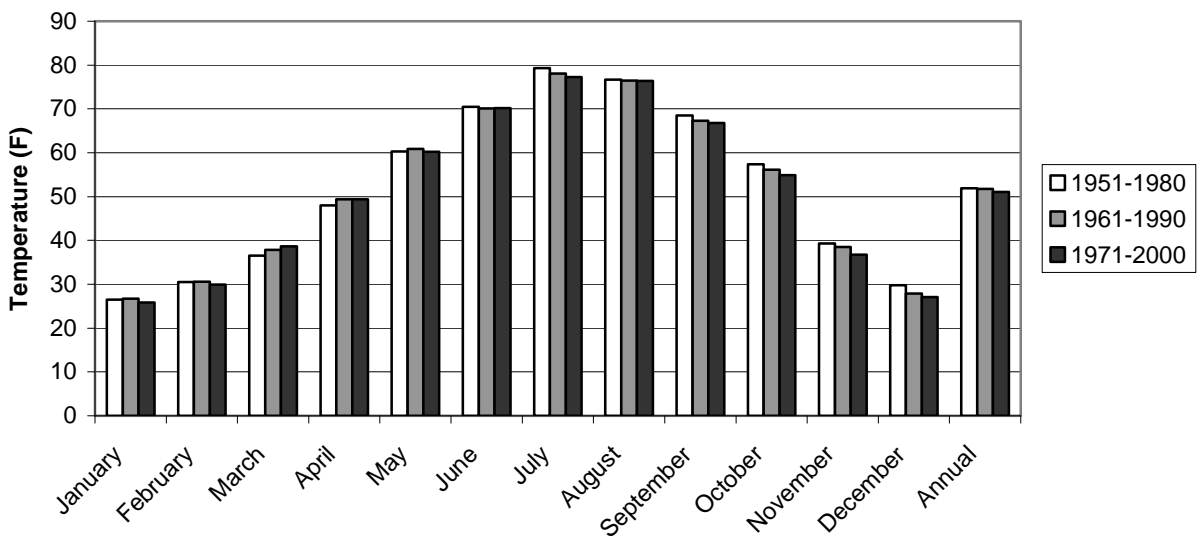
FIGURES

Figure 3-1. Mean Monthly Temperatures in the Pinedale Region



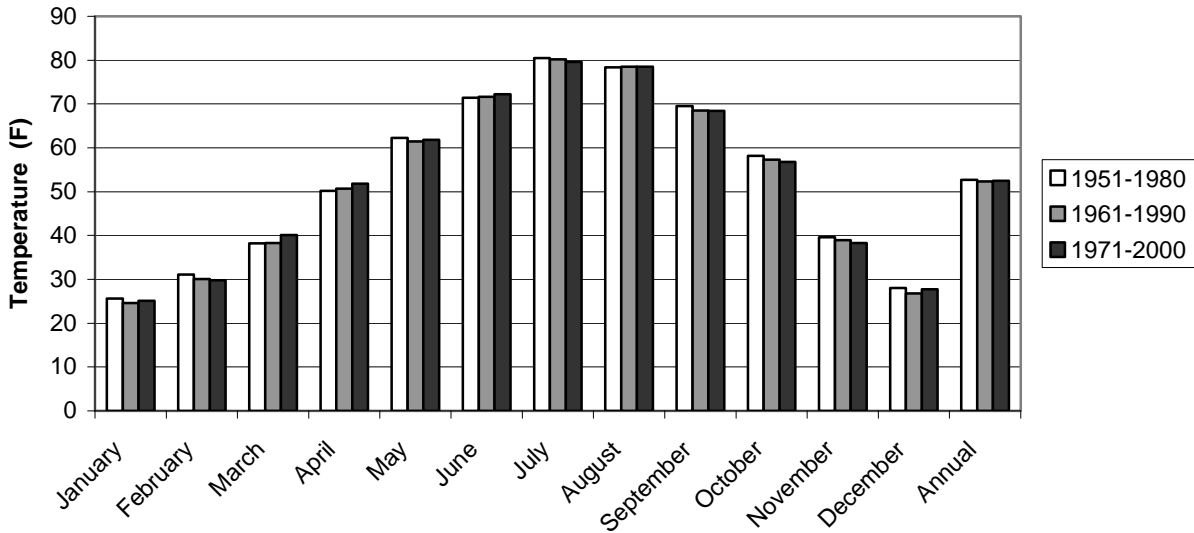
Data taken from Western Regional Climate Center

Figure 3-2. Mean Monthly Maximum Temperature Trend in Pinedale, Wyoming



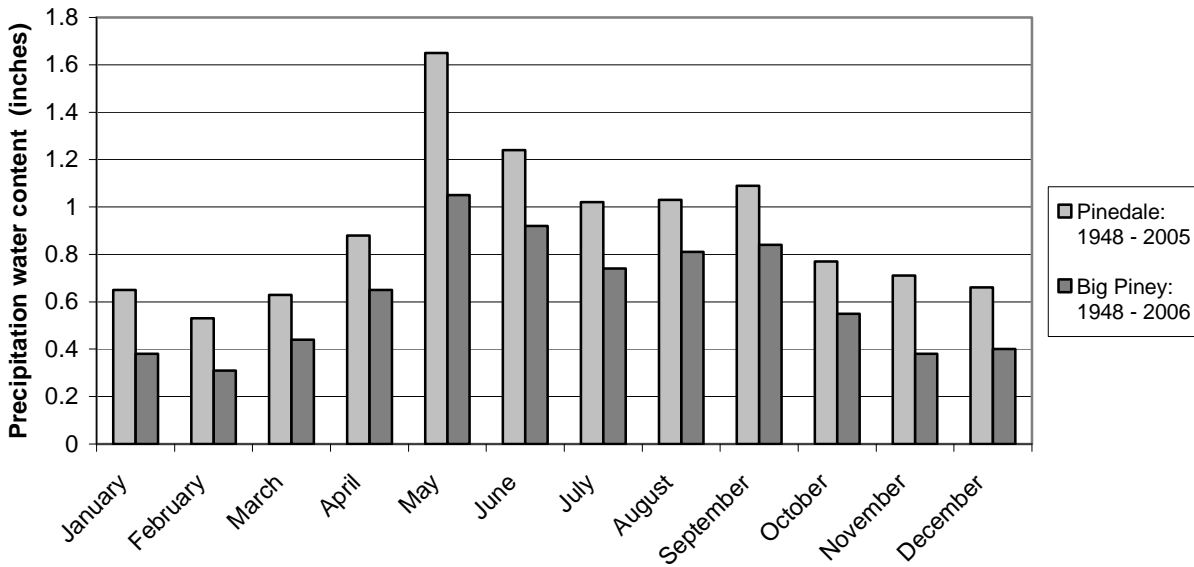
Data taken from Western Regional Climate Center

Figure 3-3. Mean Monthly Maximum Temperature Trend in Big Piney, Wyoming



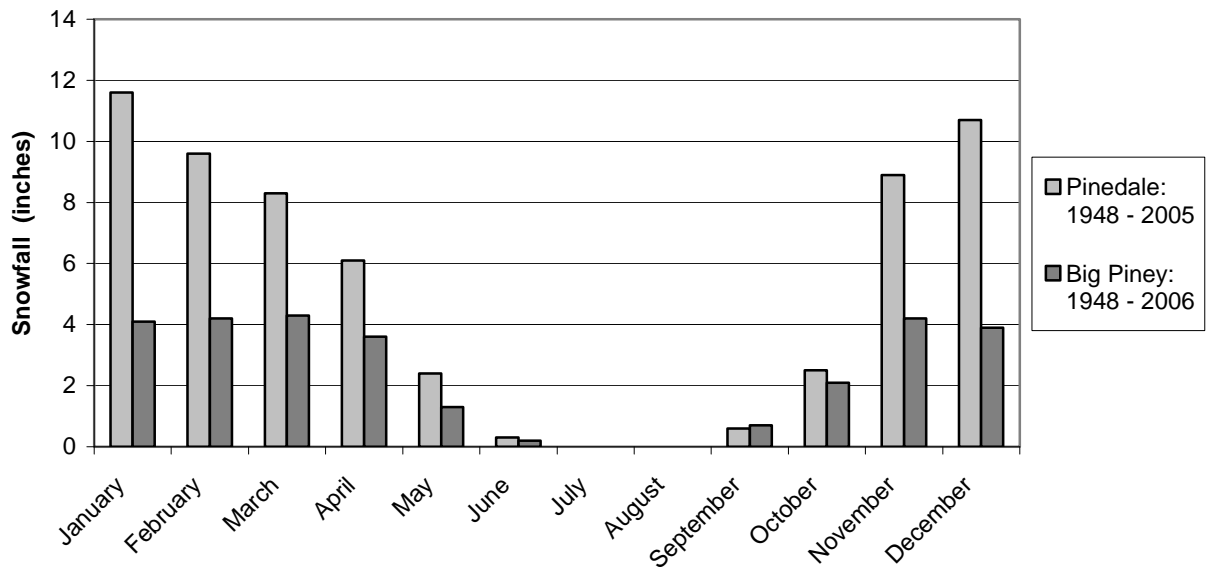
Data taken from Western Regional Climate Center

Figure 3-4. Mean Monthly Precipitation in the Pinedale Region



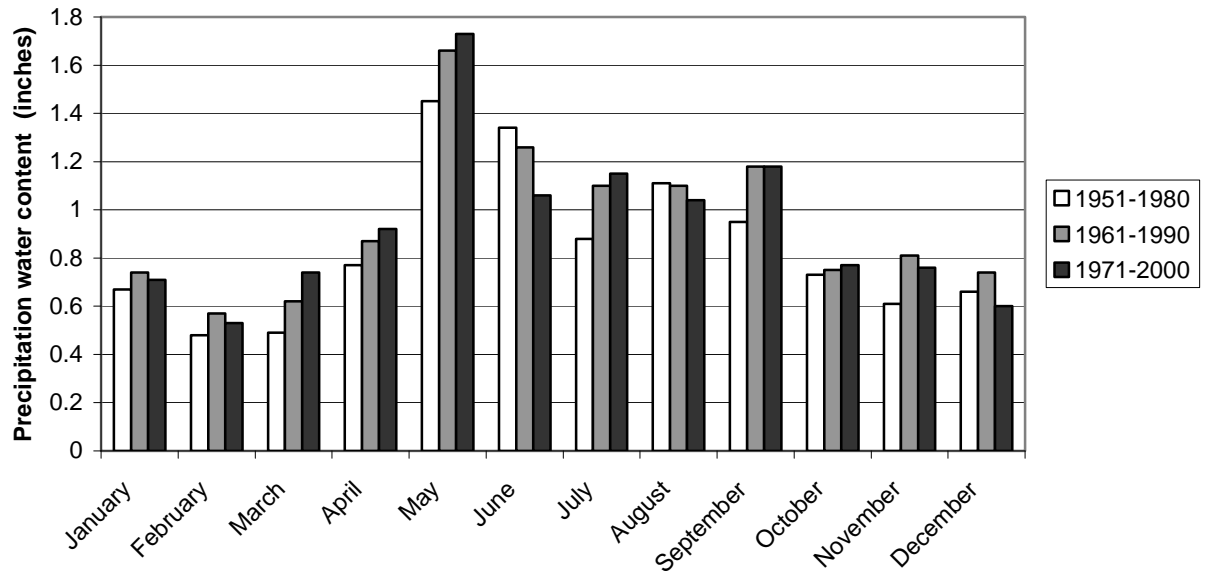
Data taken from Western Regional Climate Center

Figure 3-5. Mean Monthly Snowfall in the Pinedale Region



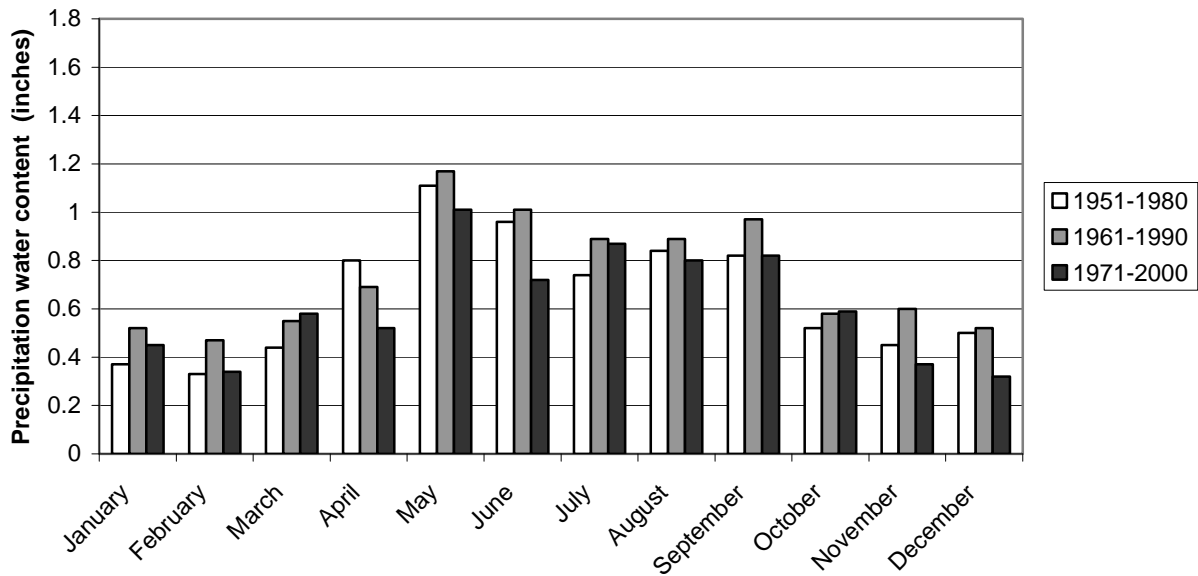
Data taken from Western Regional Climate Center

Figure 3-6. Mean Monthly Precipitation Trend in Pinedale, Wyoming



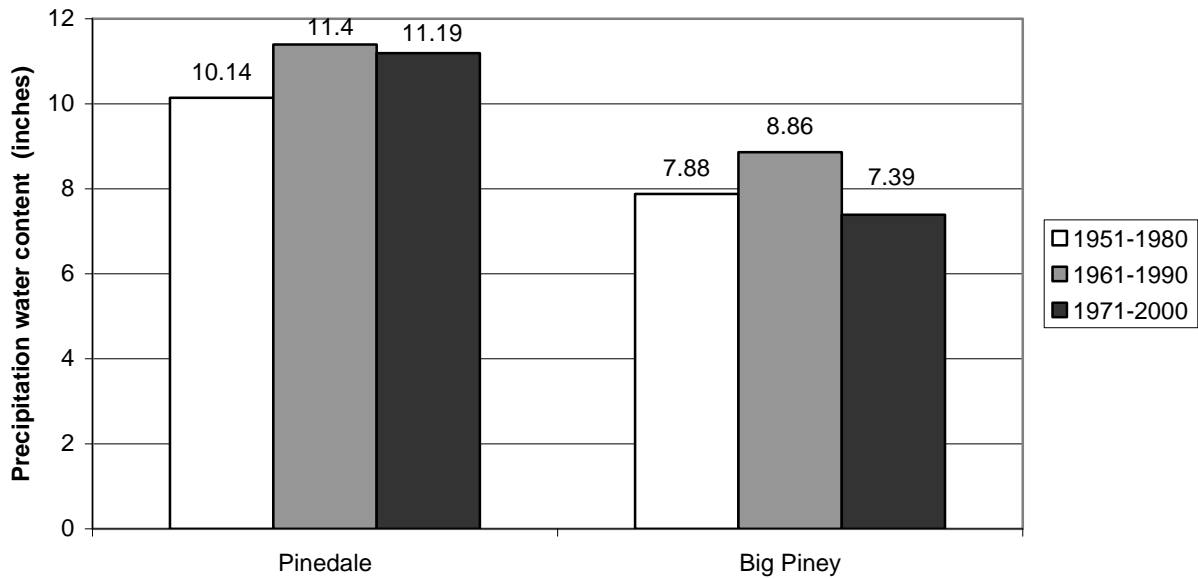
Data taken from Western Regional Climate Center

Figure 3-7. Mean Monthly Precipitation Trend in Big Piney, Wyoming



Data taken from Western Regional Climate Center

Figure 3-8. Mean Annual Precipitation Trend in the Pinedale Region



Data taken from Western Regional Climate Center

Figure 3-9. Capacity to Disperse Air Pollutants in Rock Springs, Wyoming

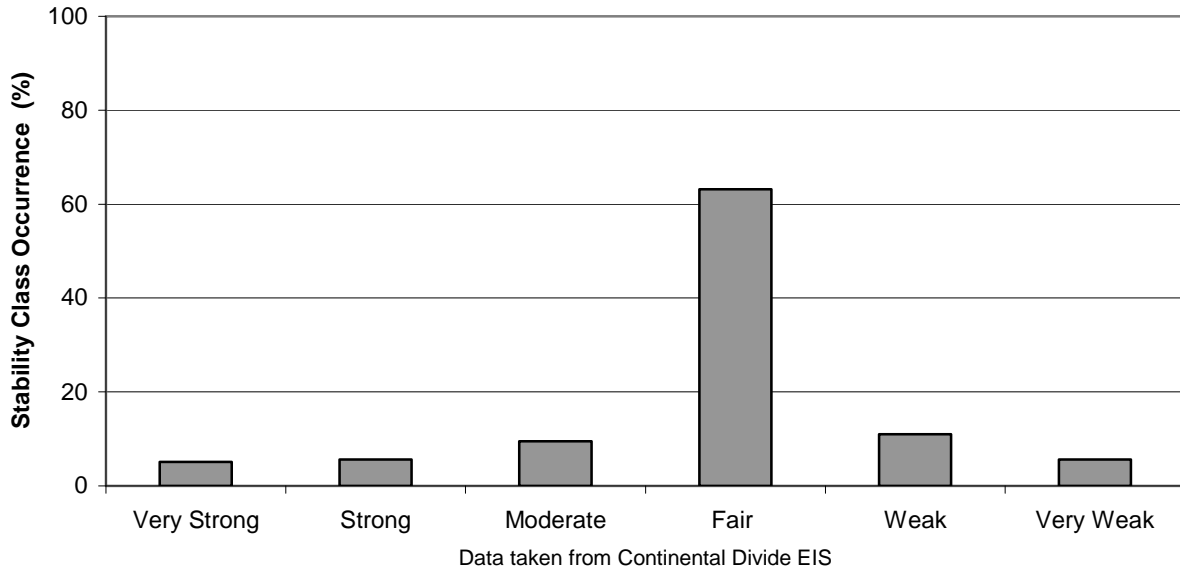


Figure 3-10. Wind Rose for the Jonah Field, 1999-2003

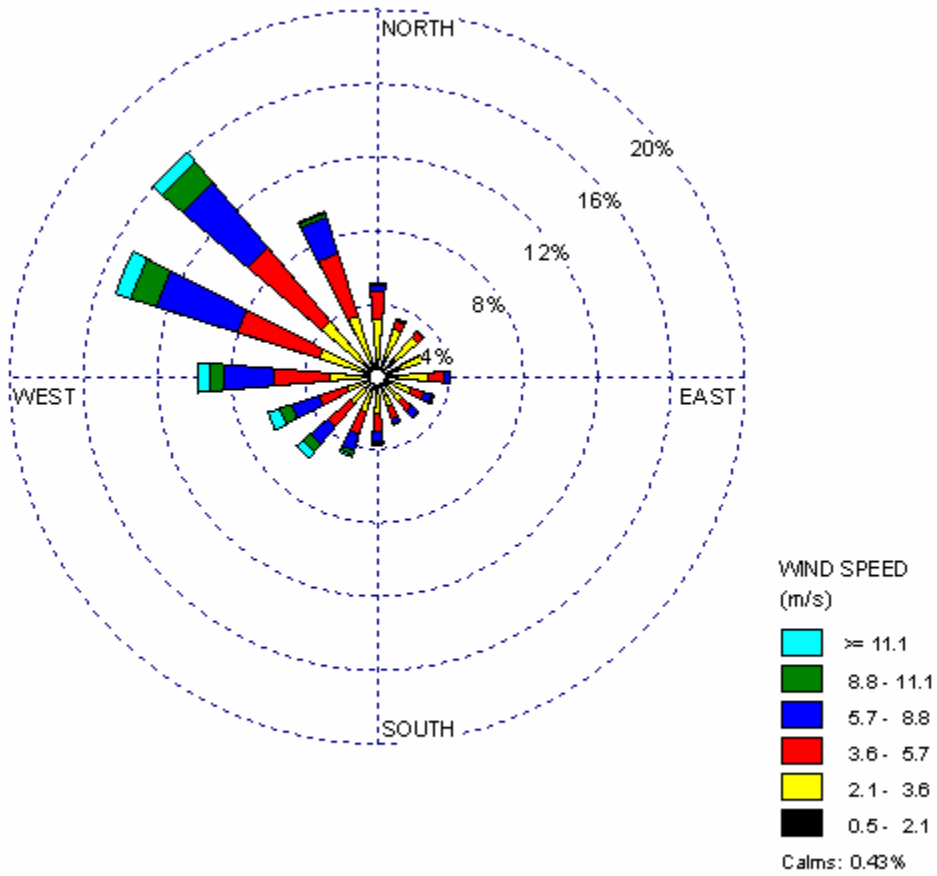


Figure 3-11. Mean Annual Ozone Concentrations near Pinedale and in Yellowstone National Park

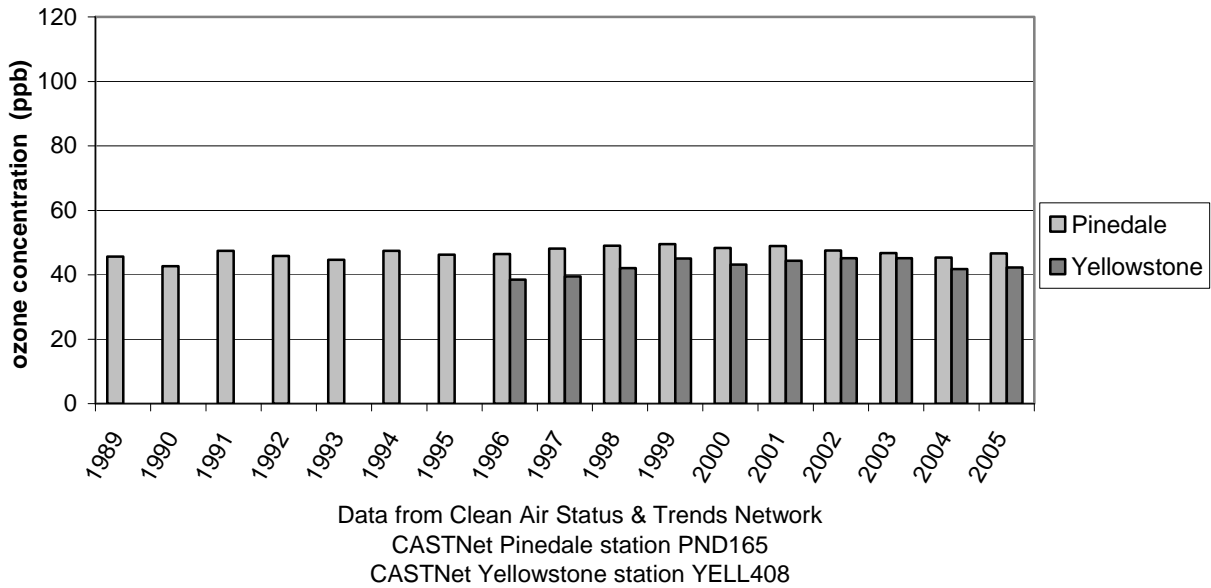


Figure 3-12. Annual Visibility (dv) in Bridger Wilderness

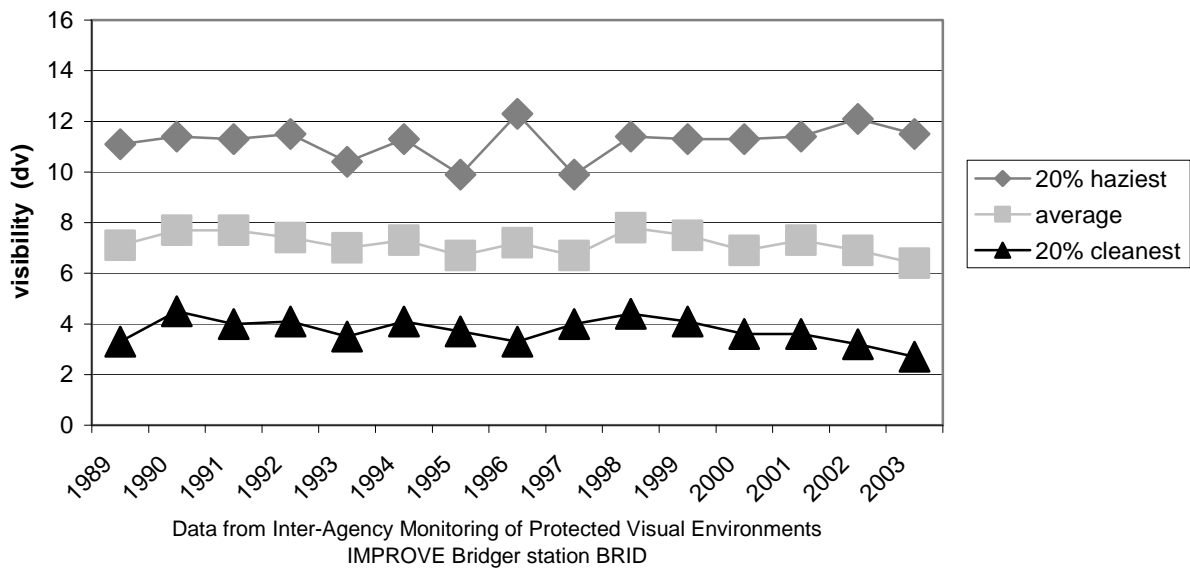


Figure 3-13. Visibility in Bridger Wilderness, Wyoming Reconstructed Fine Mass (1 Year Average)

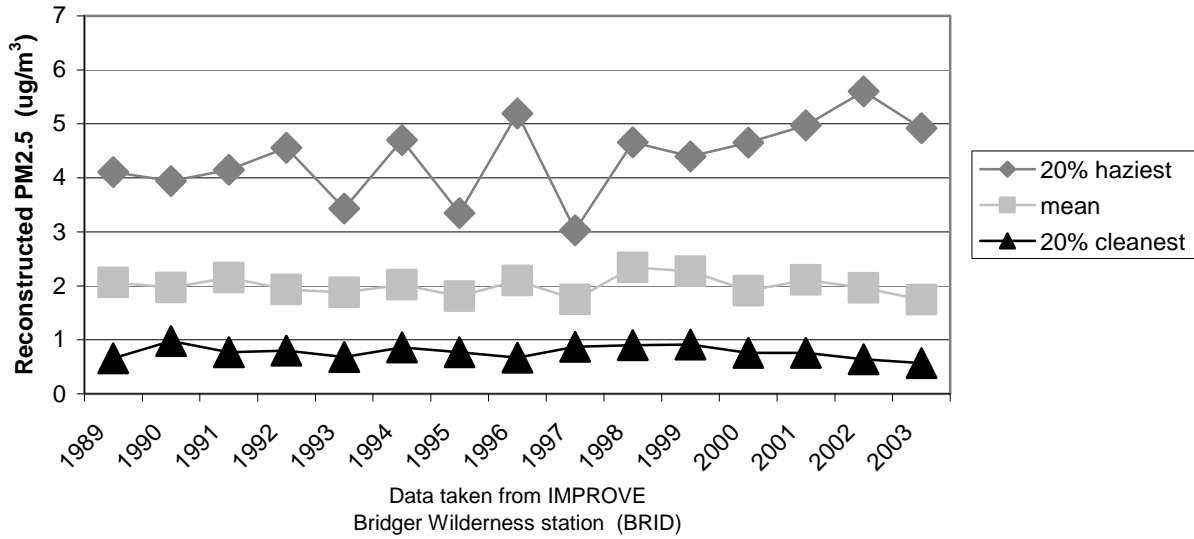
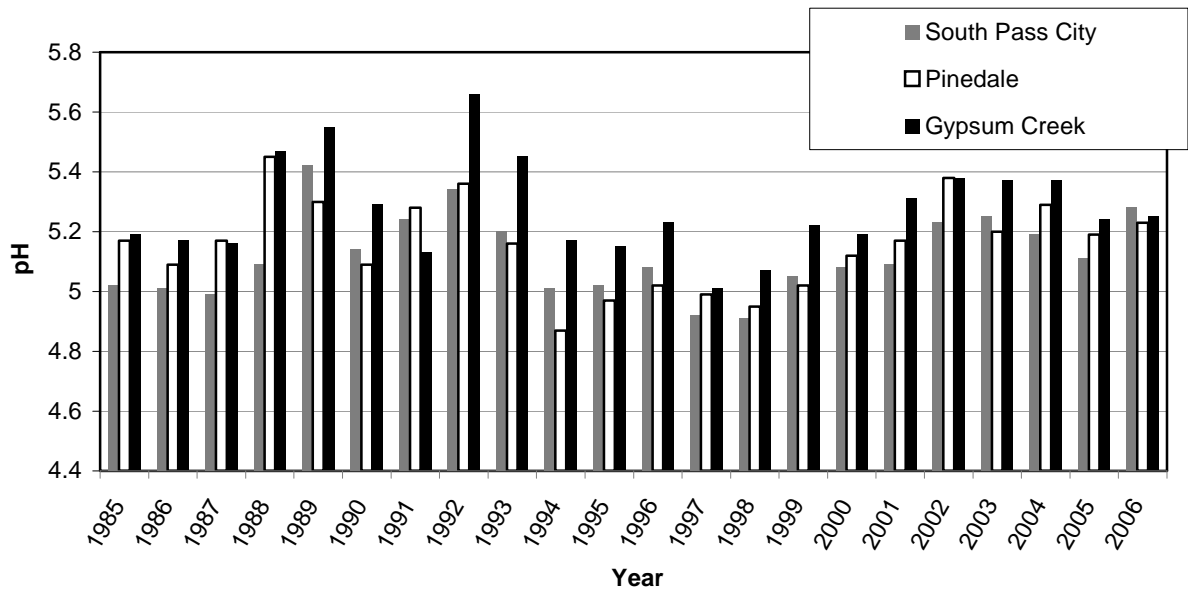


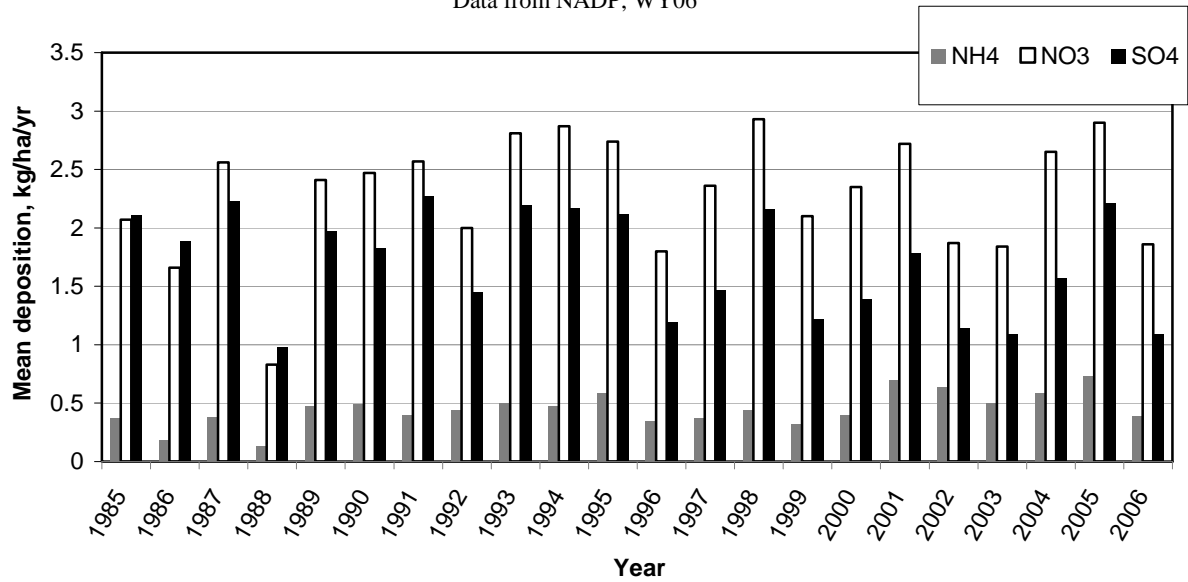
Figure 3-14. Mean Annual Precipitation pH at Three Locations near Pinedale Wyoming, 1985 - 2006

(Note: typical precipitation pH in remote areas is between 5 and 5.6)



**Figure 3-15. Mean Annual Wet Deposition near Pinedale
Wyoming, 1985 - 2006.**

Data from NADP, WY06



**Figure 3-16. Mean Annual Wet Deposition at Gypsum Creek
Wyoming, 1985 - 2006.**

Data from NADP, WY98

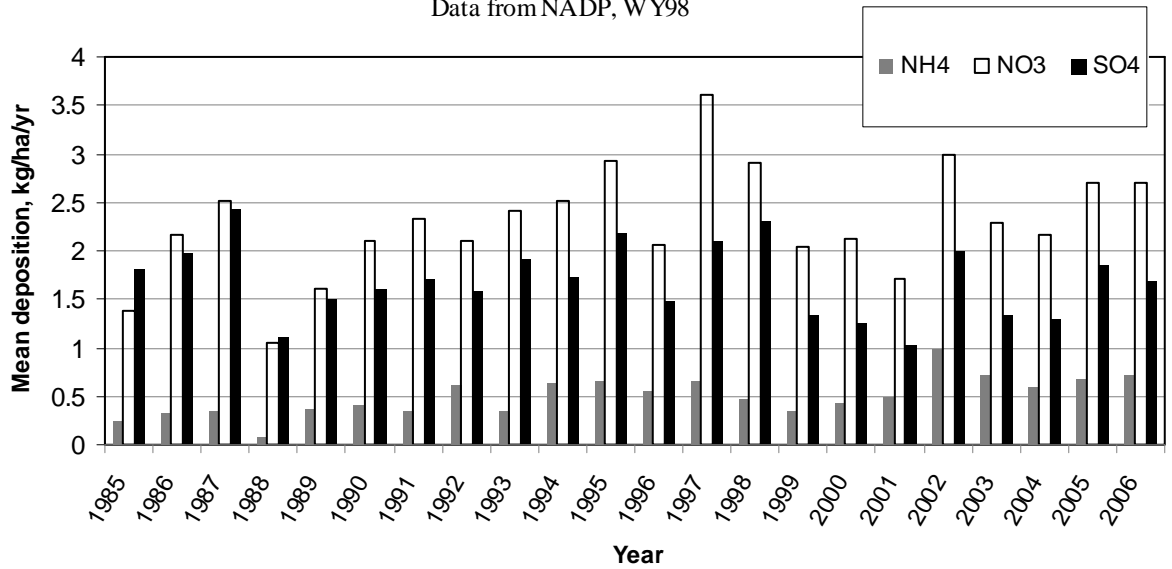


Figure 3-17. Mean Annual Wet Deposition at South Pass City, 1985 - 2006

Data from NADP, WY97

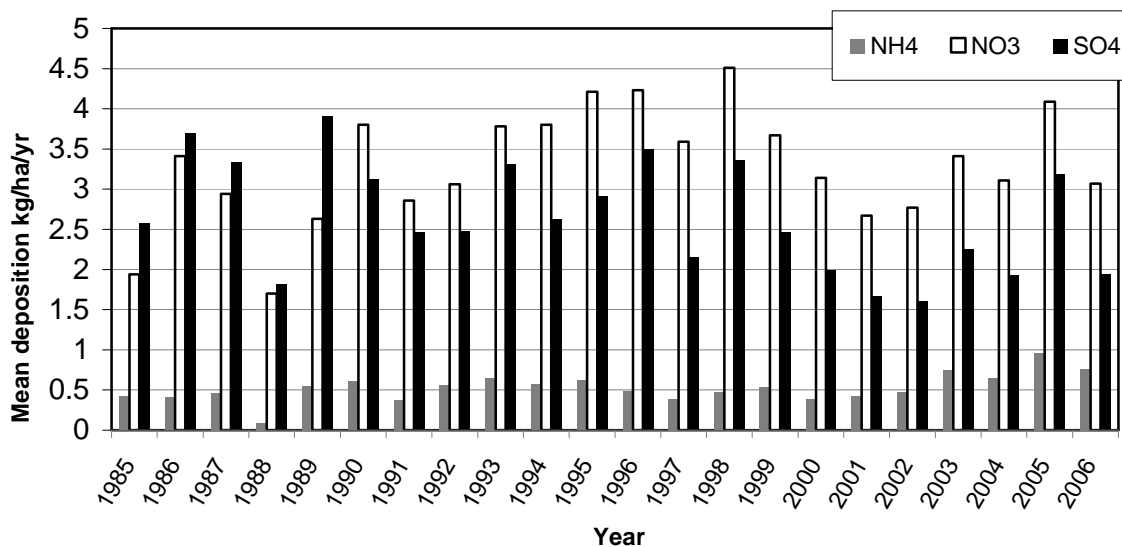


Figure 3-18. Mean Annual Dry Deposition near Pinedale, Wyoming

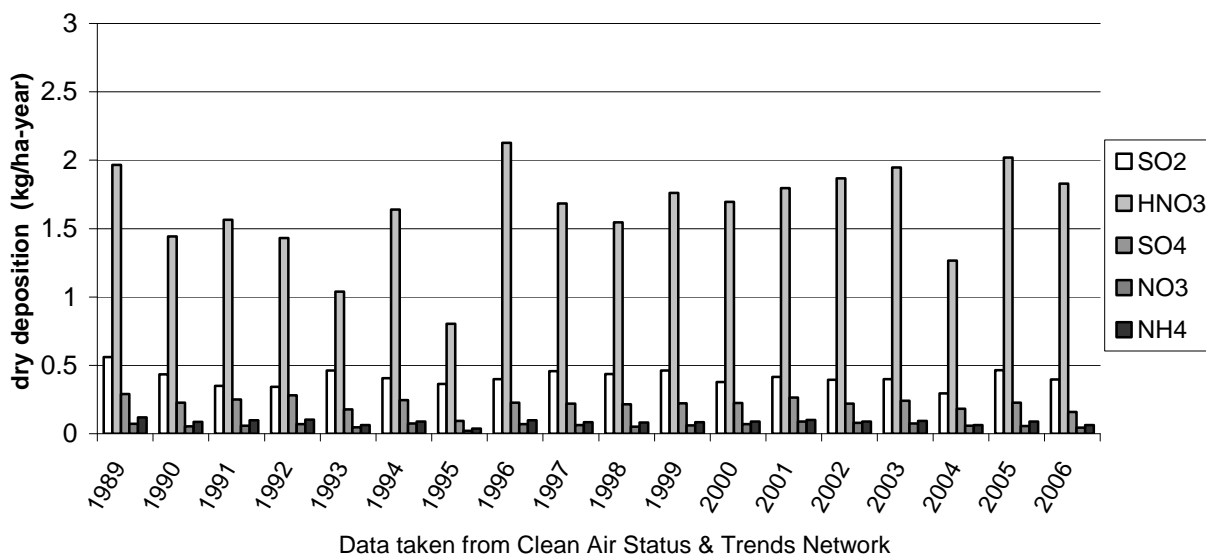


Figure 3-19. Mean Annual Concentrations of Nitrogen Compounds near Pinedale, Wyoming

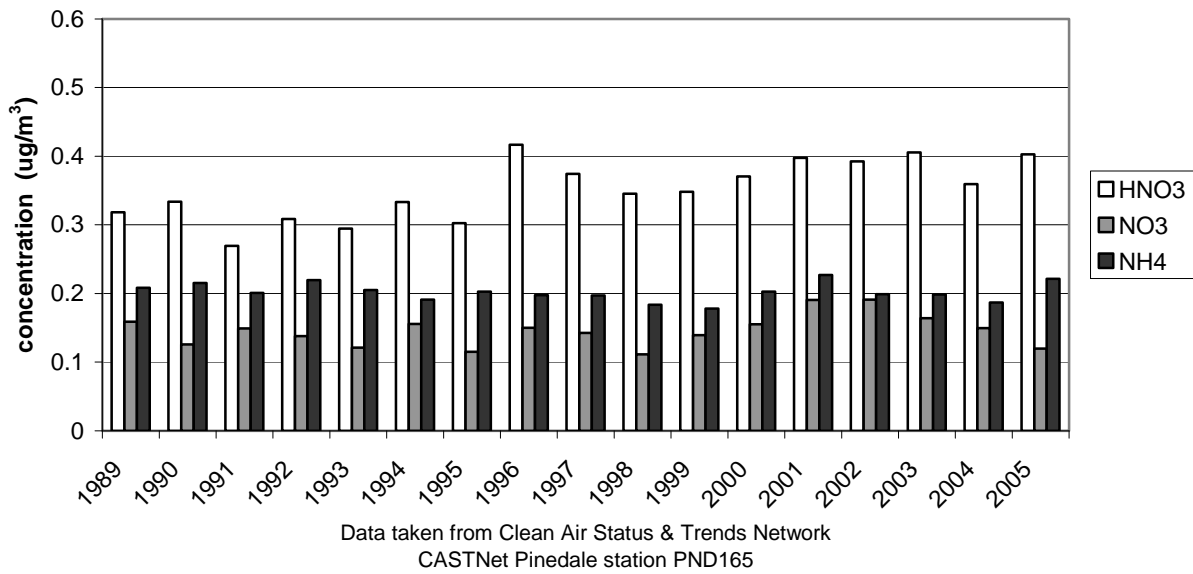


Figure 3-20. Weekly Concentrations of Nitrate near Pinedale, Wyoming

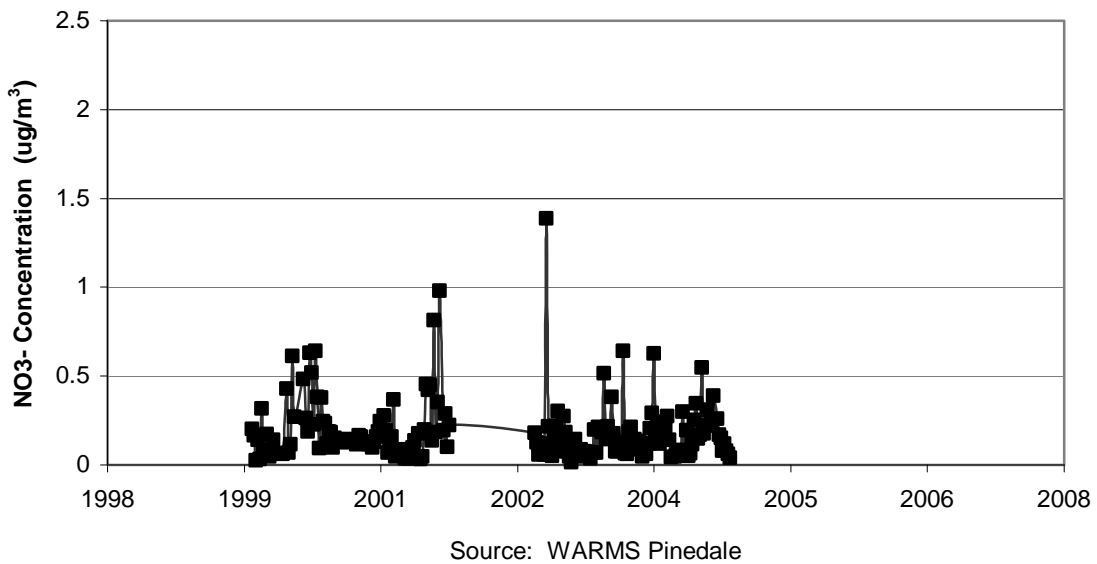


Figure 3-21. Weekly Concentrations of Ammonium near Pinedale, Wyoming

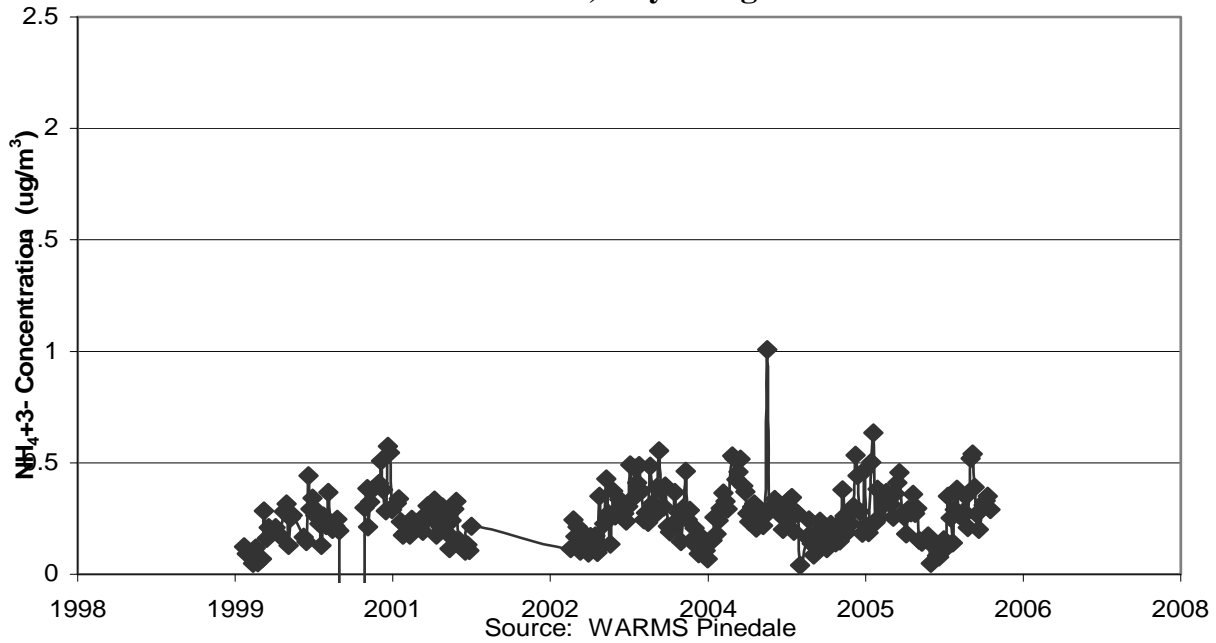


Figure 3-22. Mean Annual Concentrations of Sulfur Compounds near Pinedale, Wyoming

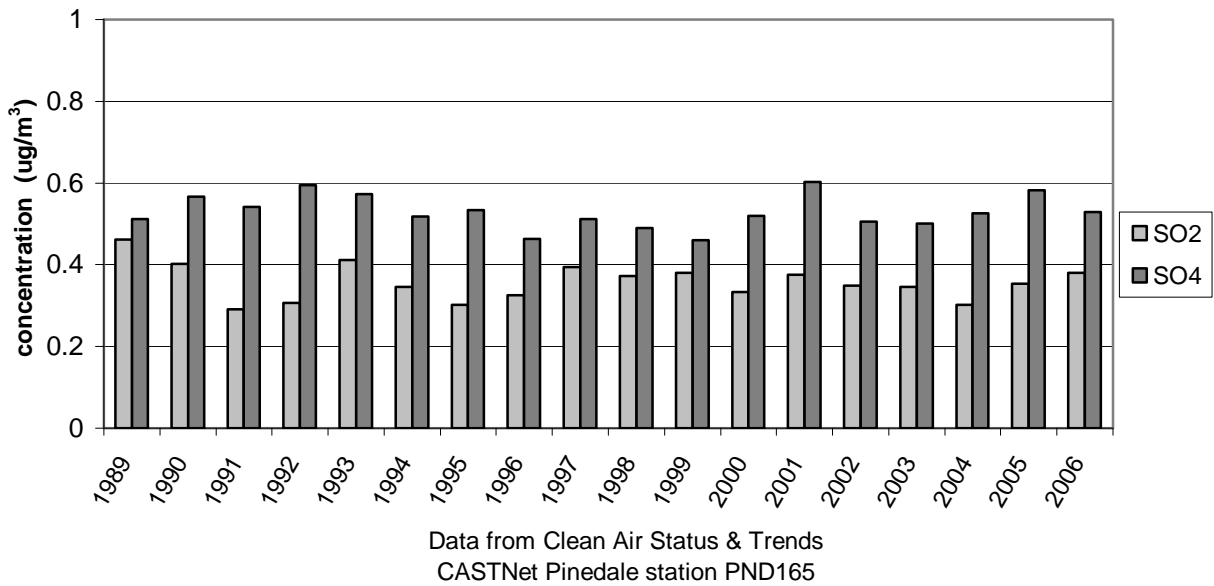


Figure 3-23. Weekly Concentrations of Sulfur Dioxide near Pinedale, Wyoming

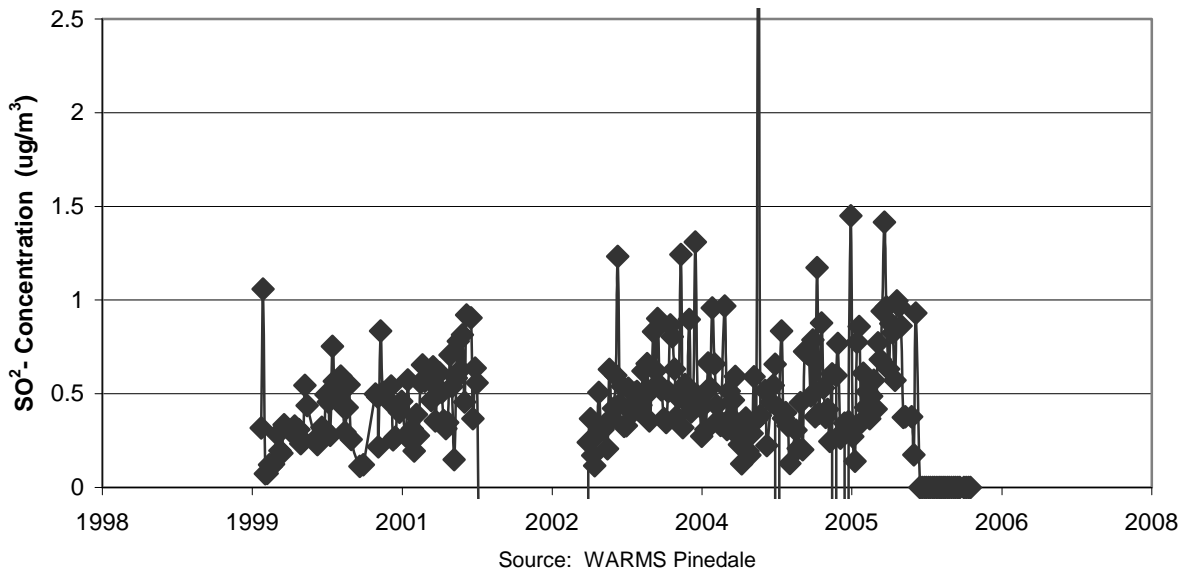


Figure 3-24. Weekly Concentrations of Sulfate near Pinedale, Wyoming

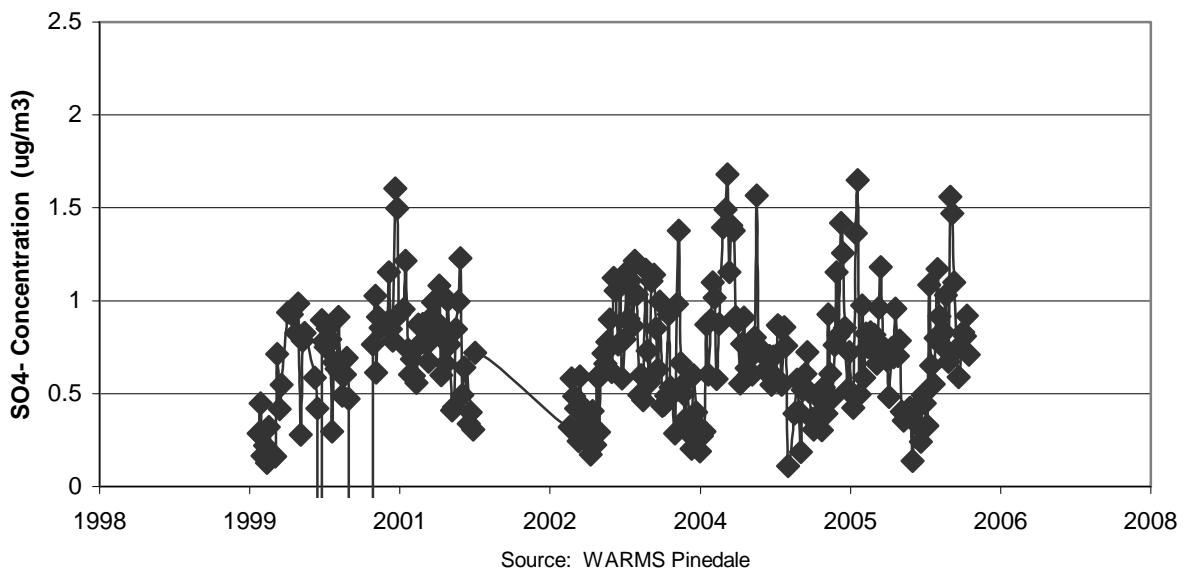


Figure 3-25. Mean Annual Total Nitrogen Deposition near Pinedale, Wyoming

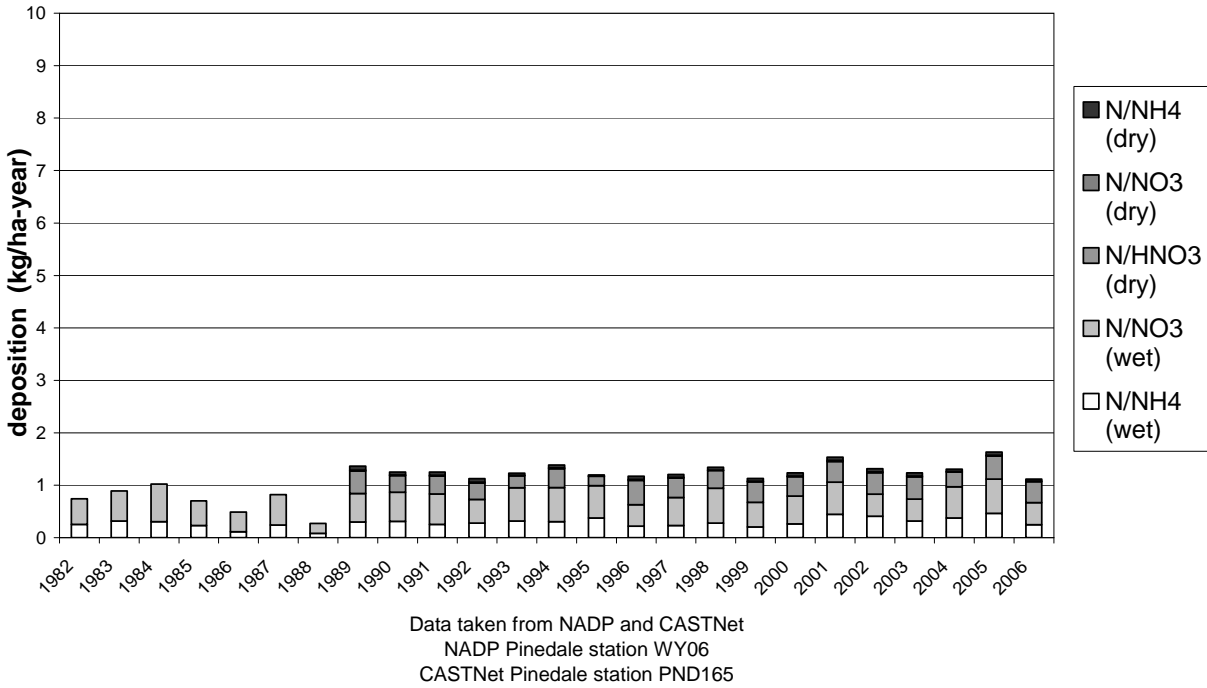


Figure 3-26. Mean Annual Total Sulfur Deposition near Pinedale, Wyoming

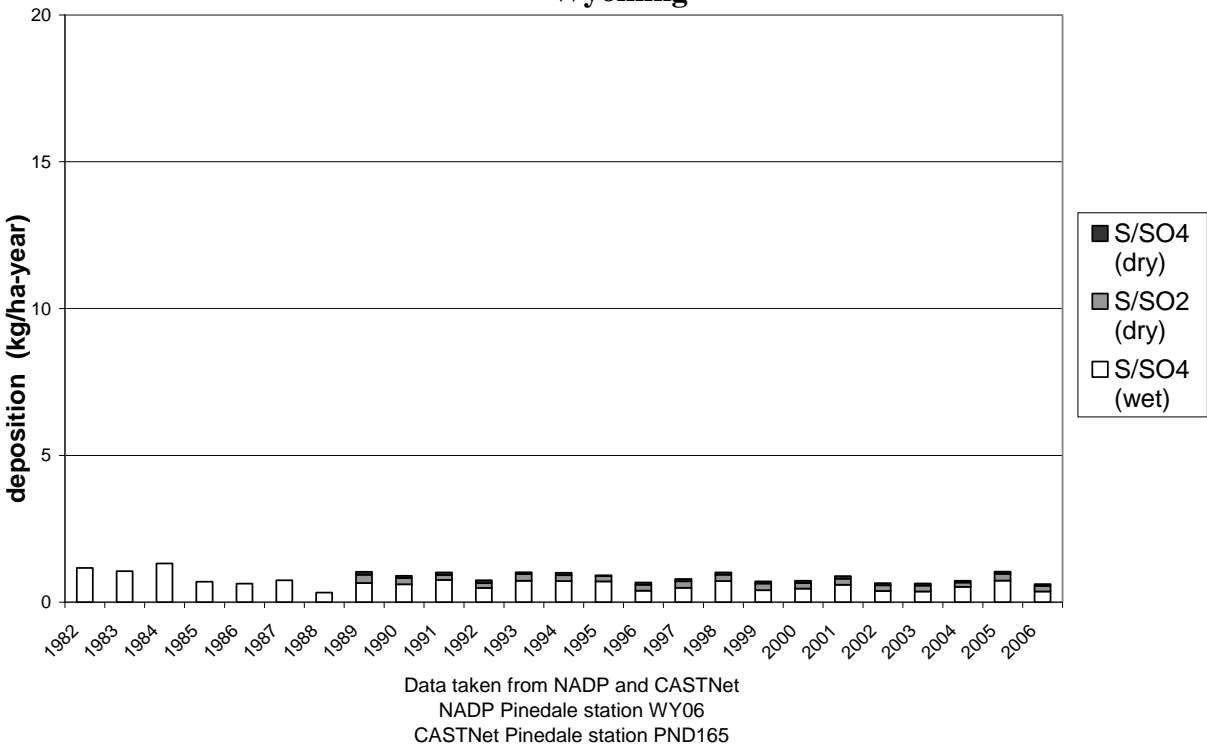
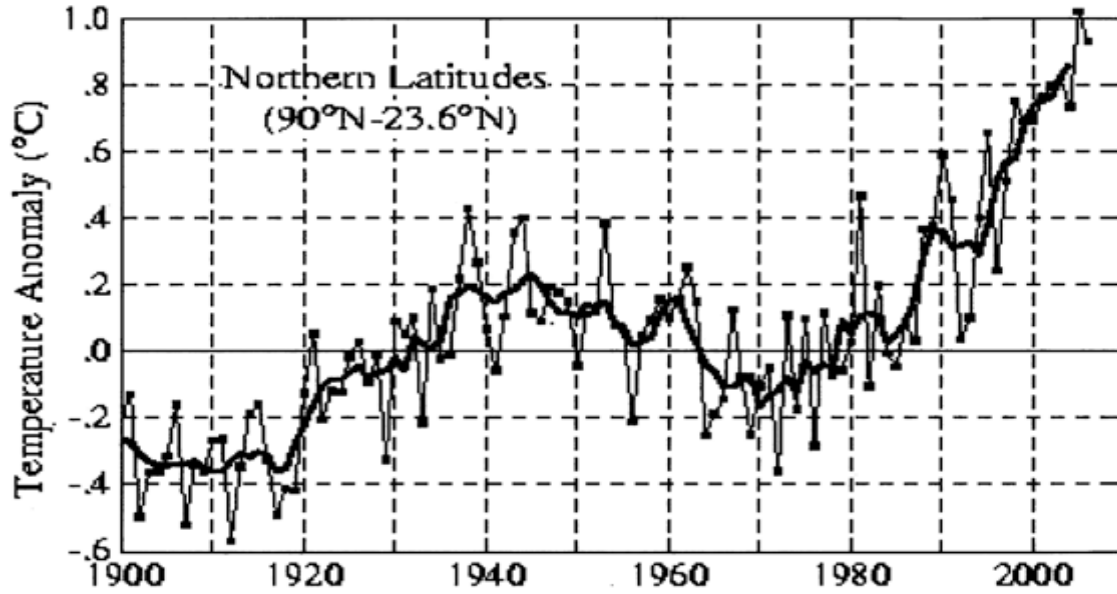


Figure 3-27. Annual Mean Surface Temperature Difference for Northern Latitudes (24 - 90° N) Relative to the 1951-1980 Mean (thin black line) and the 5-year Running Mean (thick black line)



Source: Goddard Institute for Space Studies (2007)

Figure 3-28. Rate of Long-Term Trend Temperature Change (top; degrees F per decade) and Precipitation Change (bottom; inches per decade) – Full Year

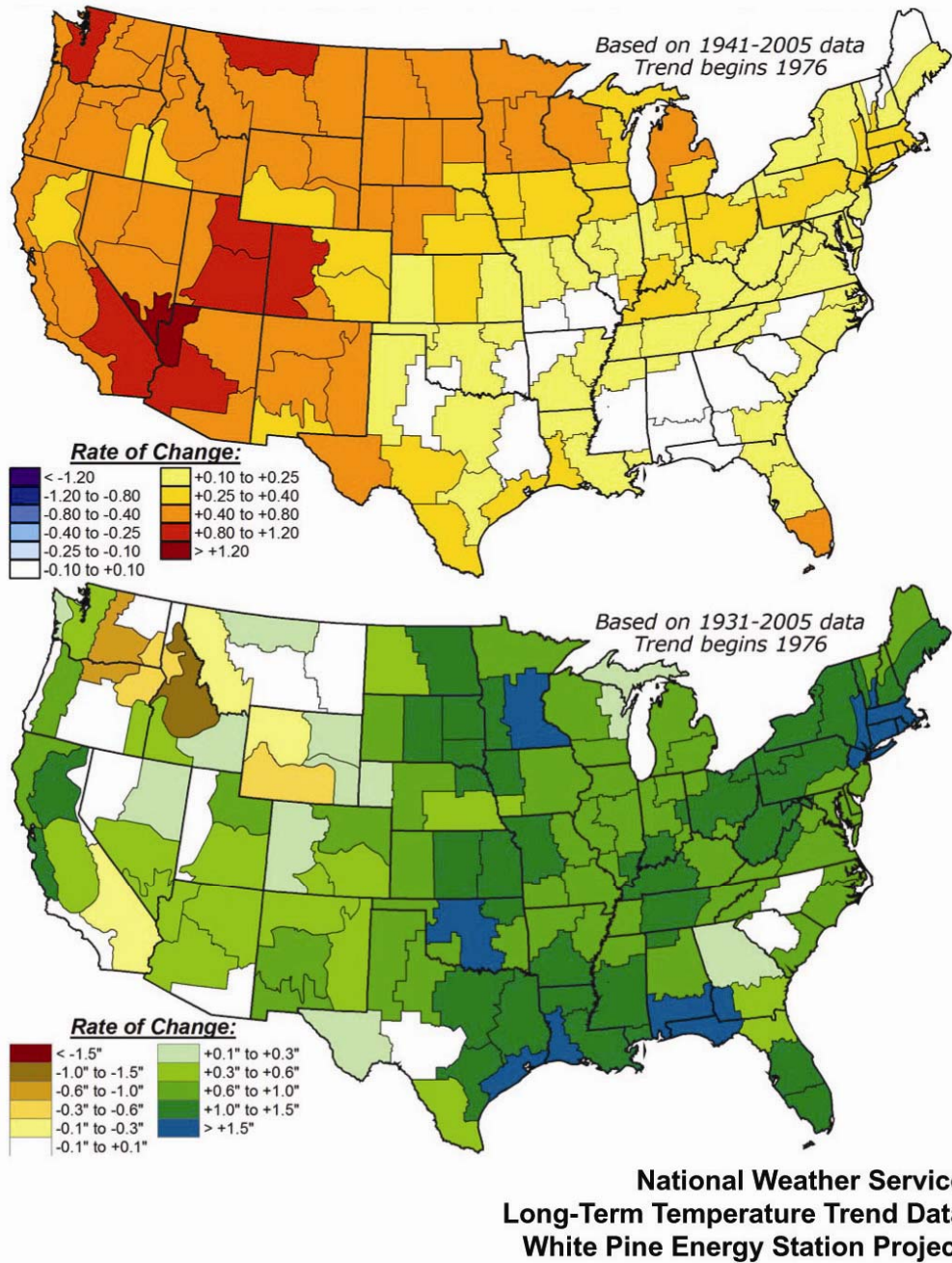
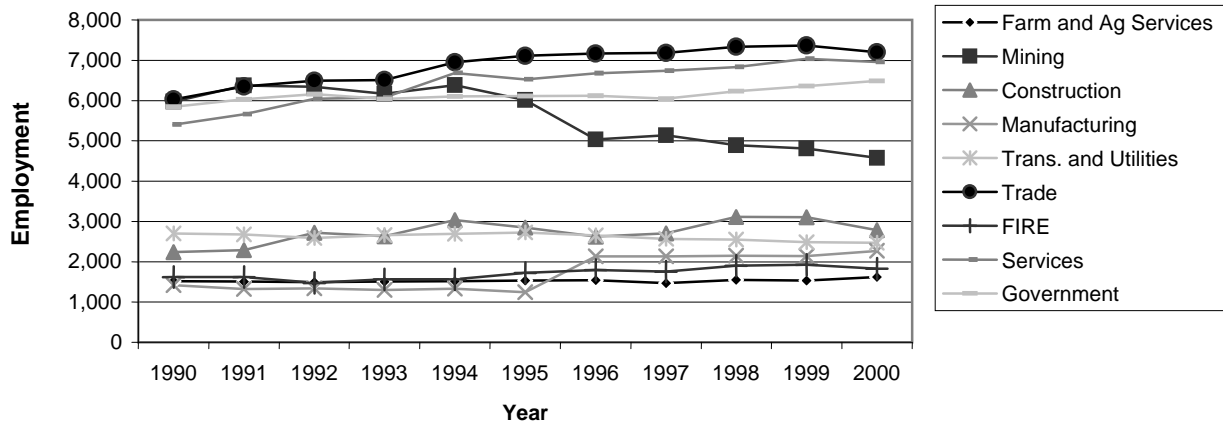
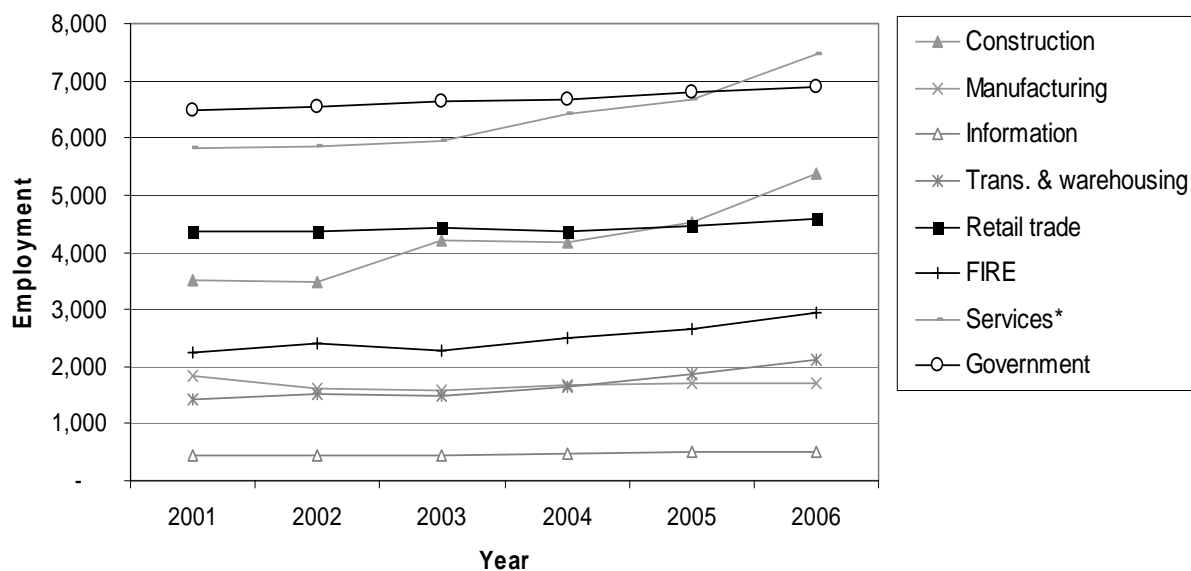


Figure 3-29. Employment Trends by Industry for 1990-2000



Source: Total Full-time employment, Regional Economic Information System, Bureau of Economic Analysis, U.S. Department of Commerce, SIC CA25 (1990 and 2000)

Figure 3-30. Employment Trends by Industry for 2001-2006**

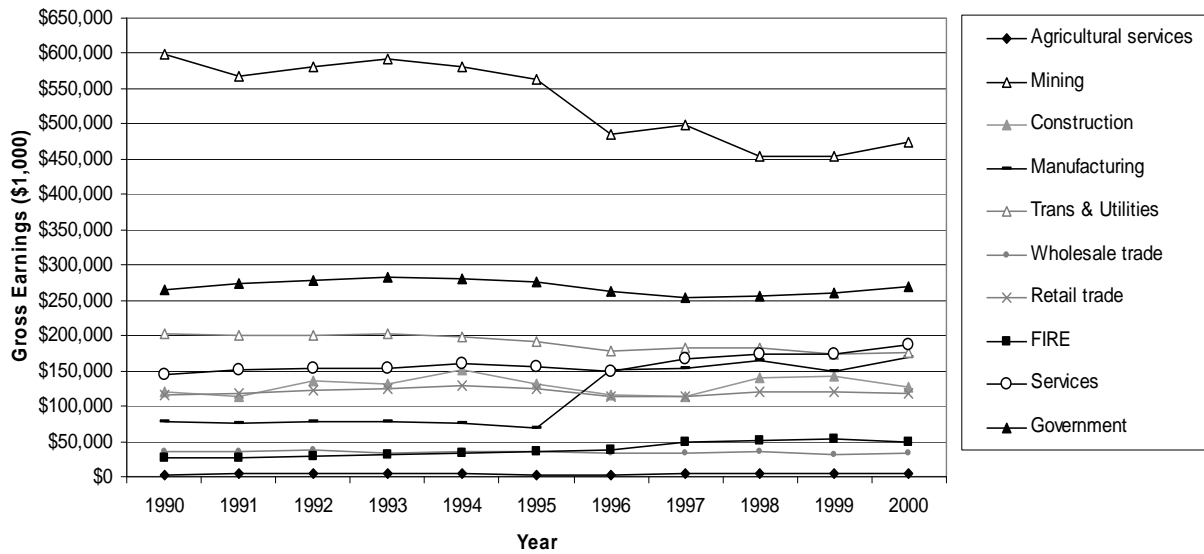


Source: Total Full-time employment, Regional Economic Information System, Bureau of Economic Analysis, U.S. Department of Commerce, NAICS CA25N (2001 and 2006)

*Other services include professional and technical services, accommodation and food services, other services.

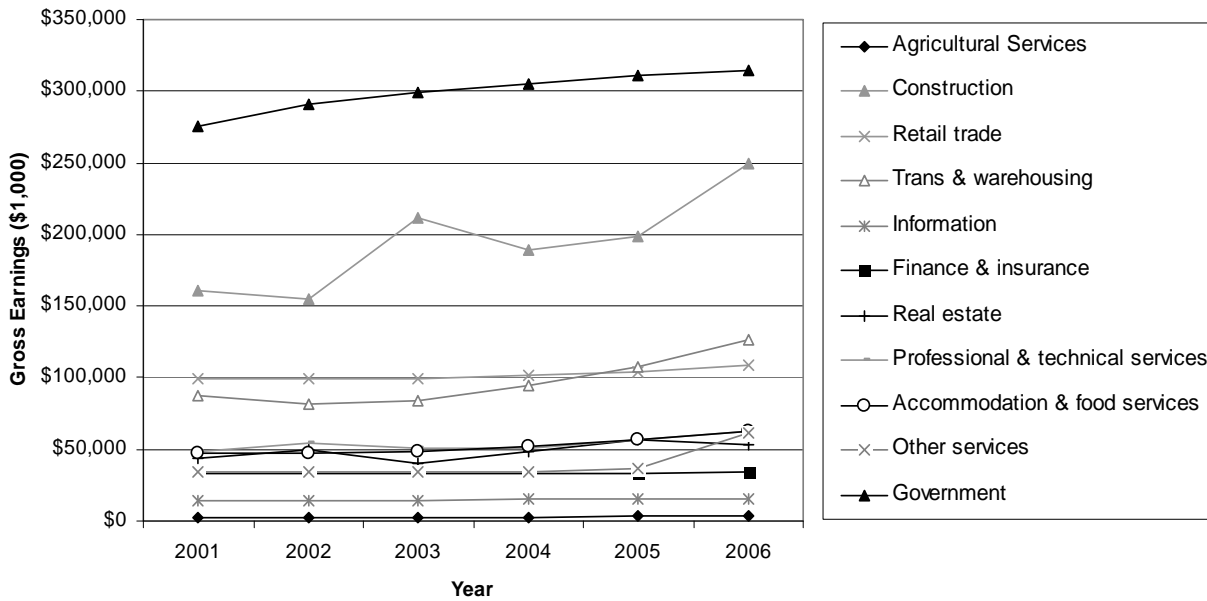
**The following employment categories were excluded due to nondisclosure of data: Management of companies and enterprises, administrative and waste services, educational services, health care and social assistance, utilities and wholesale trade, mining, arts, entertainment, and recreation, agricultural services (forestry, fishing & related activities).

Figure 3-31. Earnings by Industry 1990-2000 (Real 2006\$)



Source: Regional Economic Information System, Bureau of Economic Analysis, U.S. Department of Commerce, Table CA05 SIC (1990-2000)

Figure 3-32. Earnings by Industry 2001-2006 (Real 2006\$)**



Source: Regional Economic Information System, Bureau of Economic Analysis, U.S. Department of Commerce, Table CA05N NAICS (2001-2006)

**The following employment categories were excluded due to nondisclosure of data: Management of companies and enterprises, administrative and waste services, educational services, health care and social assistance, utilities and wholesale trade, mining, aqrts, entertainment, and recreation, forestry, fishing & related activities.

Figure 3-33. Historical Natural Gas Production in the Study Area

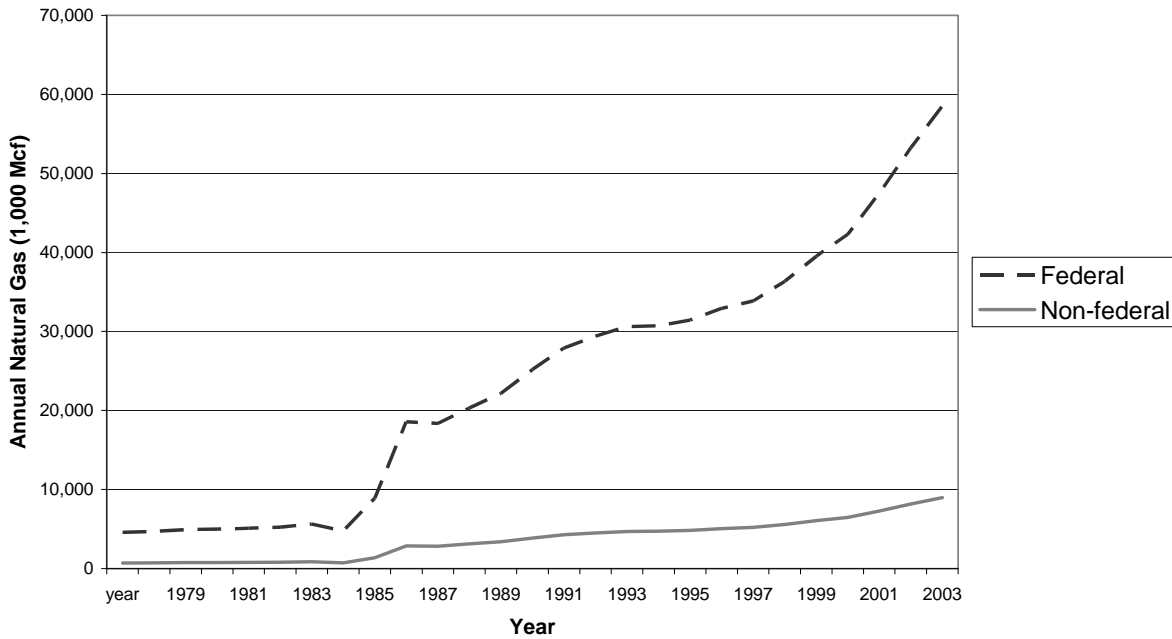


Figure 3-34. Change in Housing vs. Population in Sublette County and Wyoming

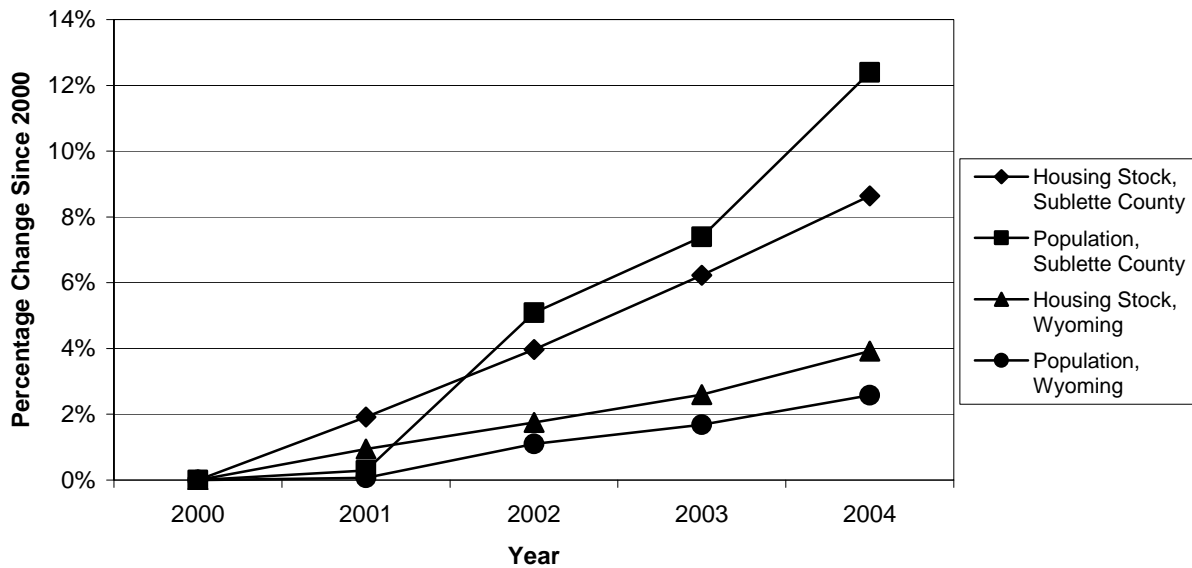
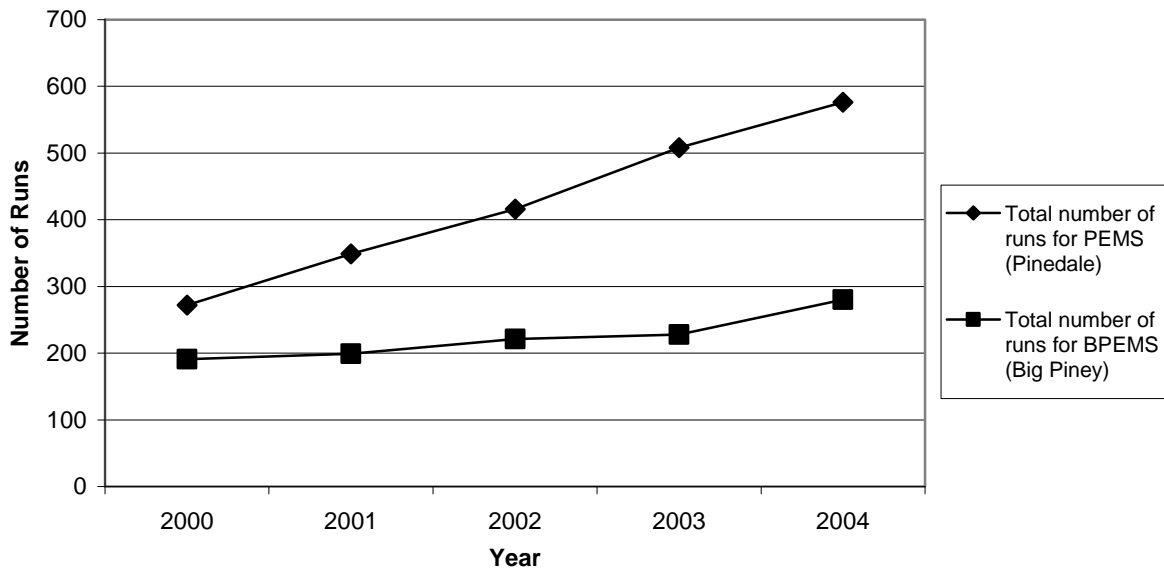


Figure 3-35. Historical Oil Production in the Study Area

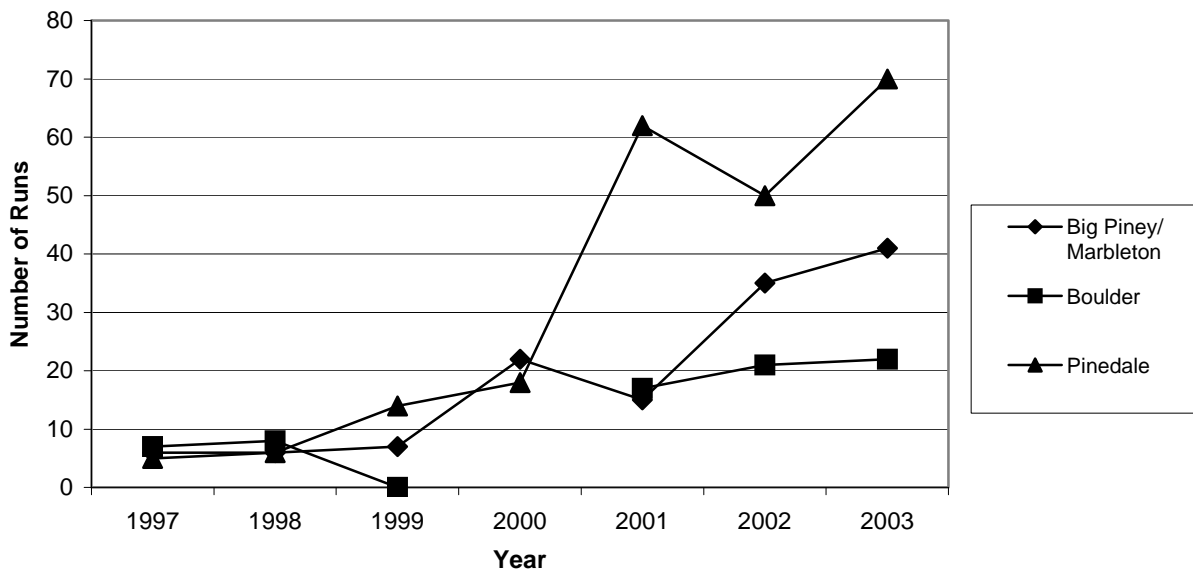


Figure 3-36. Total Emergency Medical Service Runs



Source: Sublette County Planning Commission 2005

Figure 3-37. Total Fire Department Runs



Source: Sublette County Planning Commission 2005

Figure 3-38. Crime Rate for Sublette, Sweetwater, and Lincoln Counties and Wyoming

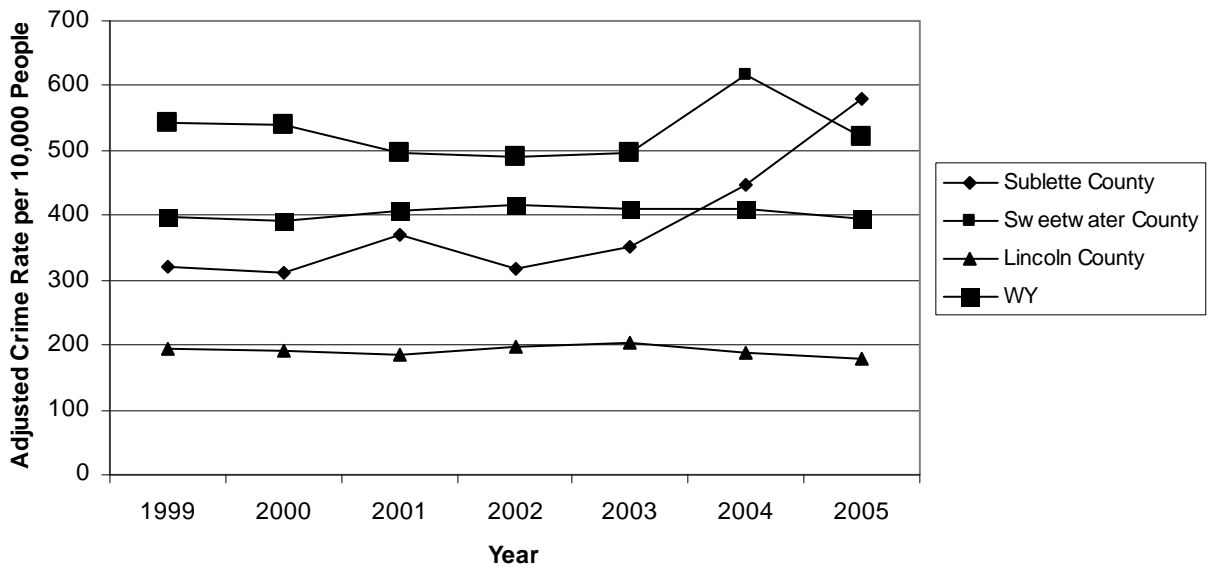


Figure 3-39. Assault Cases in Sublette, Sweetwater, and Lincoln Counties

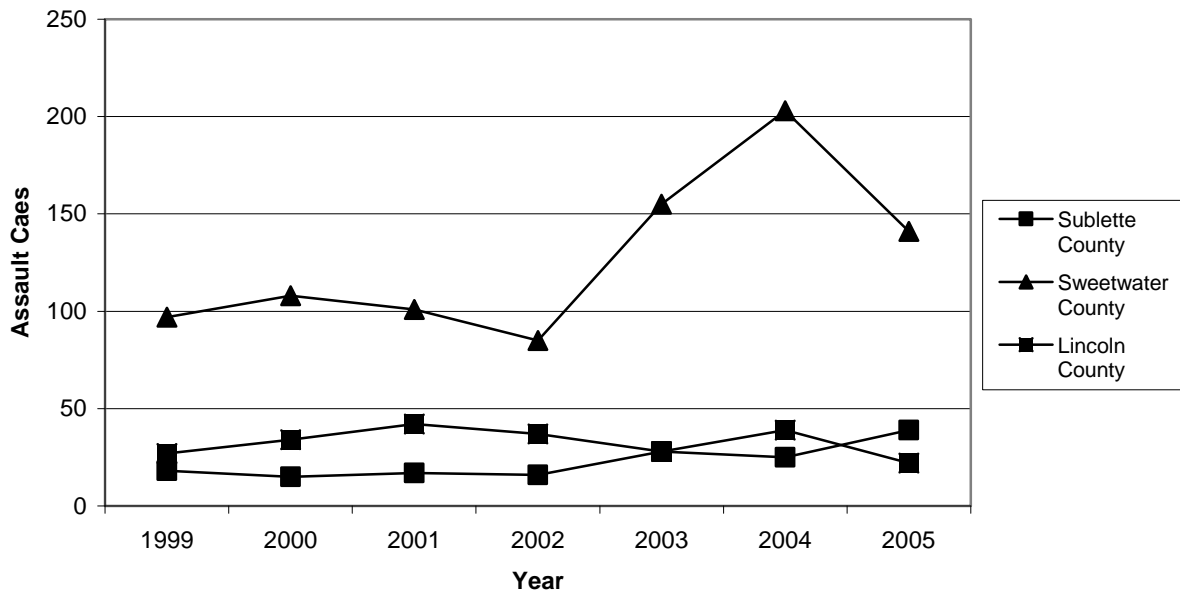


Figure 3-40. Domestic Violence in Sublette, Sweetwater and Lincoln Counties

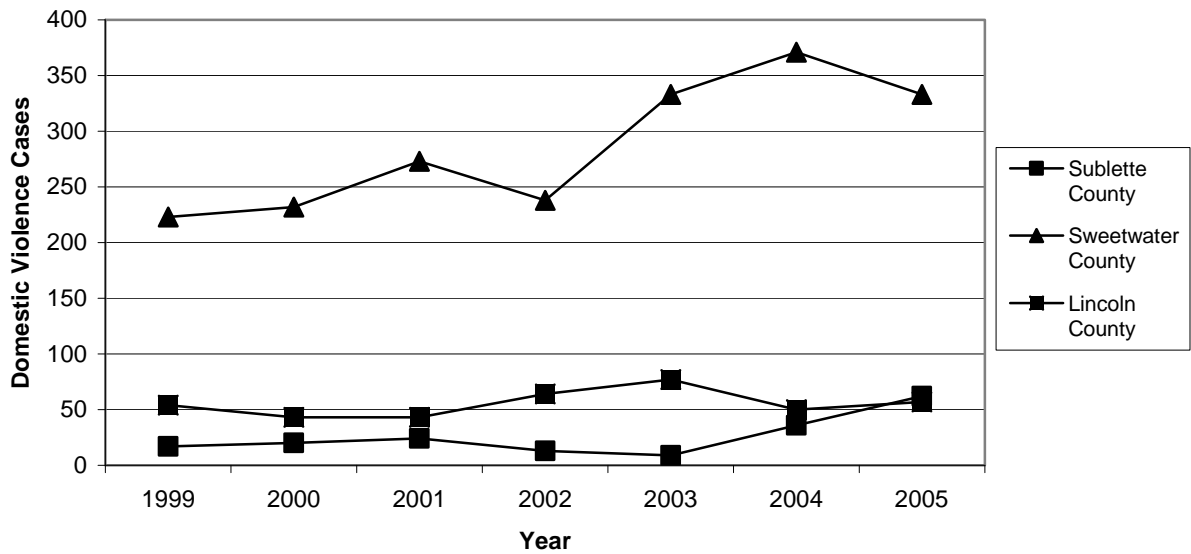


Figure 3-41. Sublette County Change in Arrests vs. Population, 1995-2004

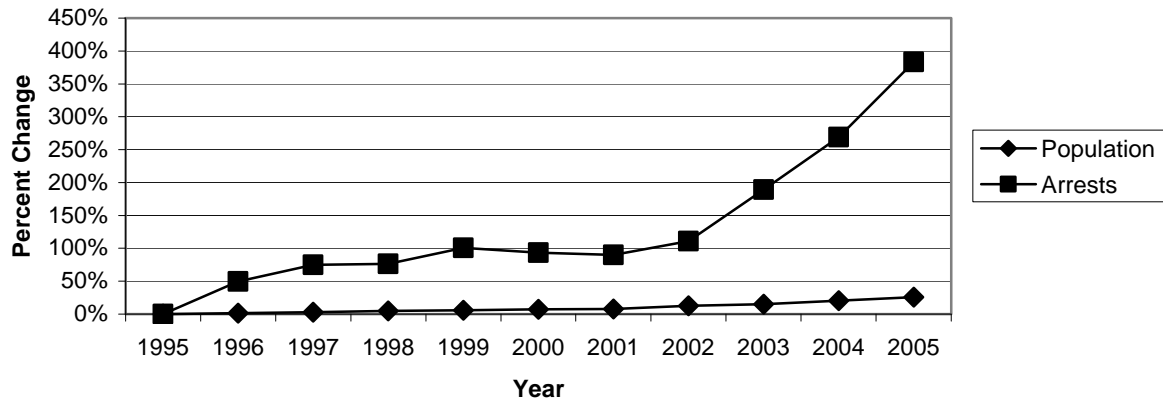


Figure 3-42. Perceptions of Tradeoffs Between Development and Wildlife Preservation

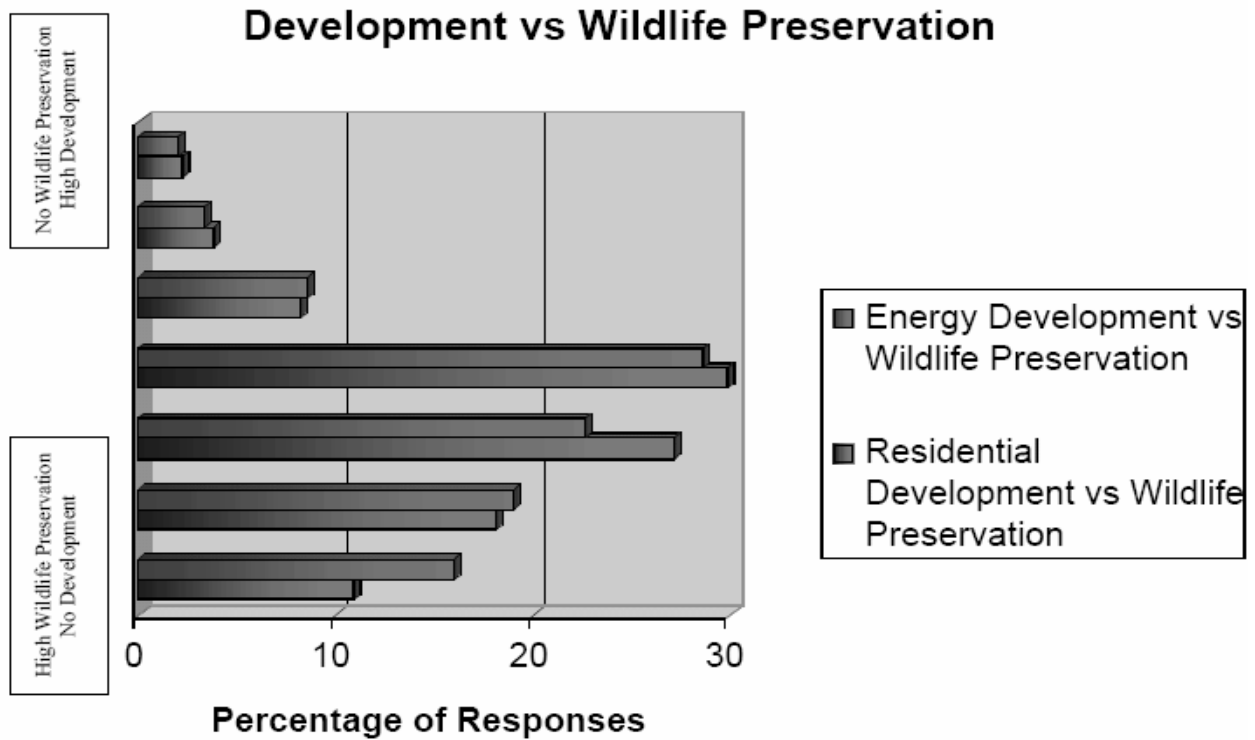


Figure 3-43. Concern, Expenditure, and Participation in Outdoor Activities

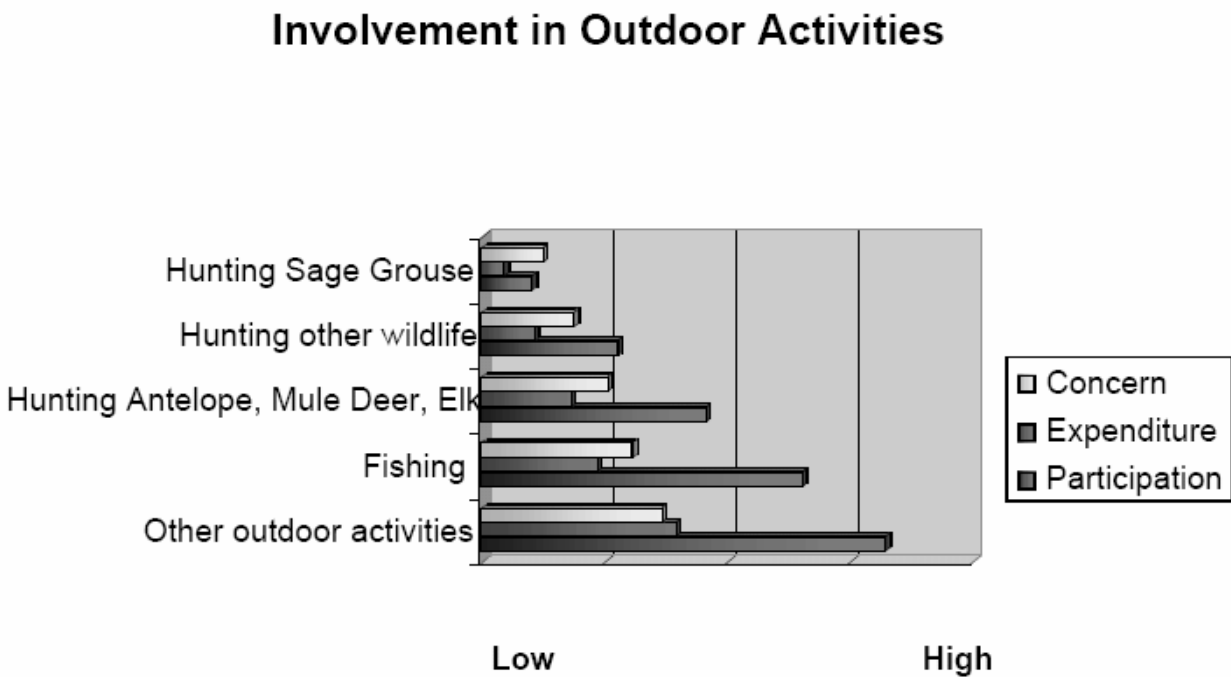


Figure 4-1. Summary of Total Potential BLM Emissions

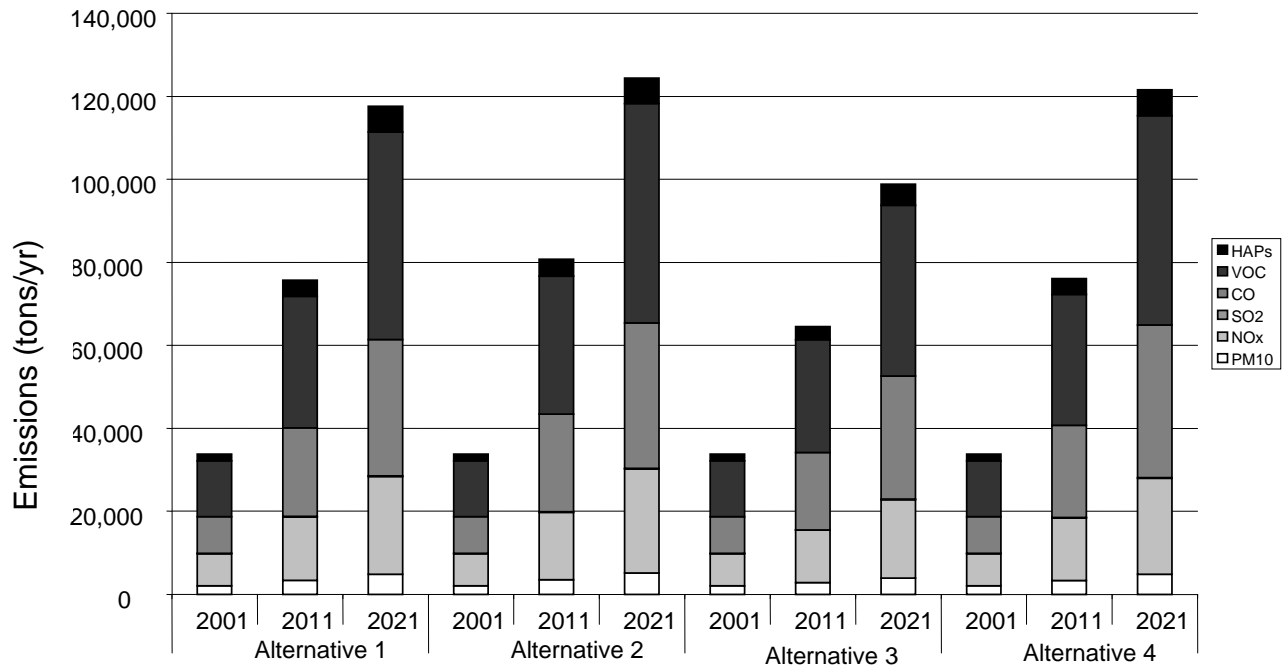


Figure 4-2. Average Employment by Alternative

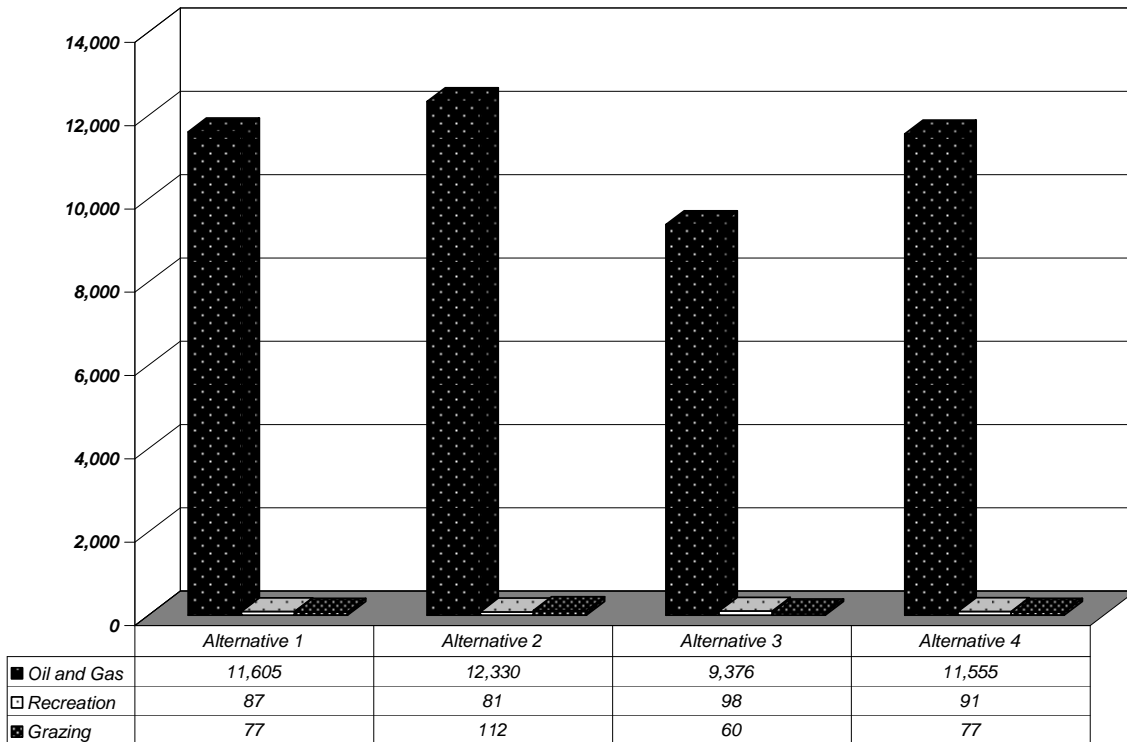


Figure 4-3. Total Estimated Earnings by Alternative (2005\$) (Reported in Thousands)

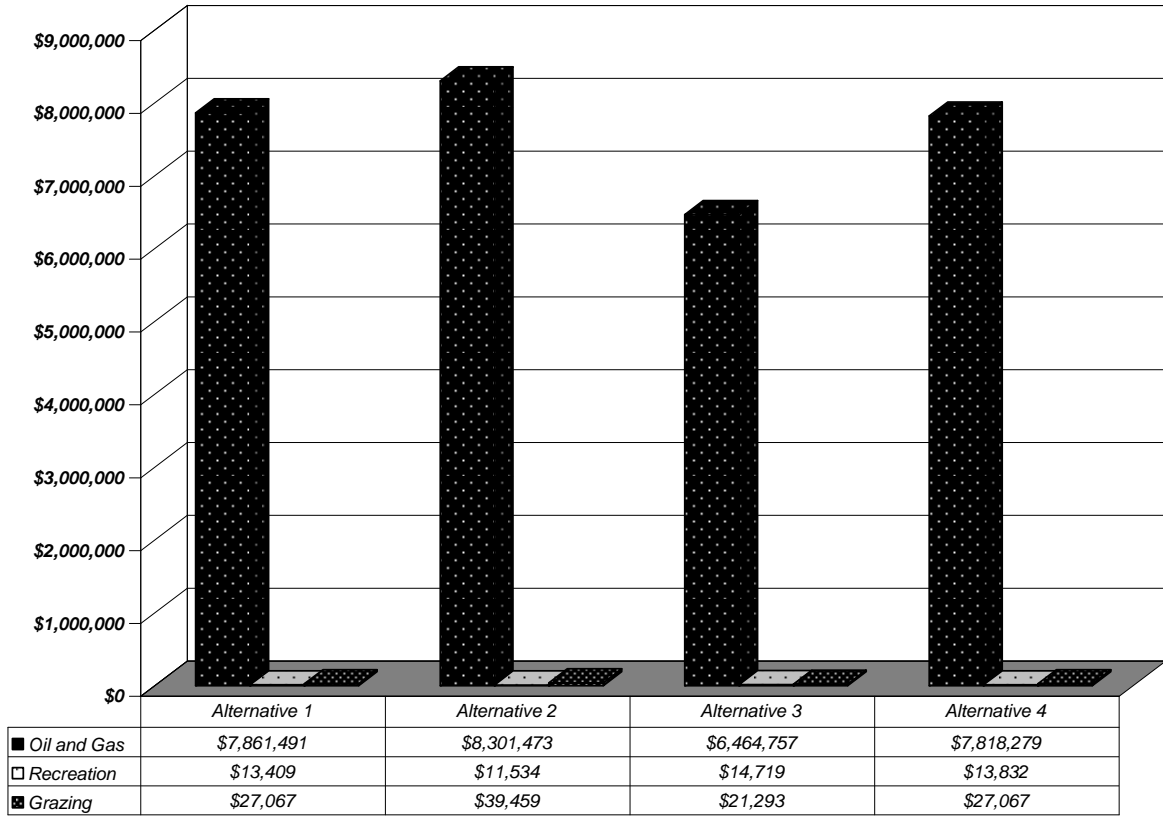


Figure 4-4. Ad Valorem Taxes by Alternative (2005\$)

