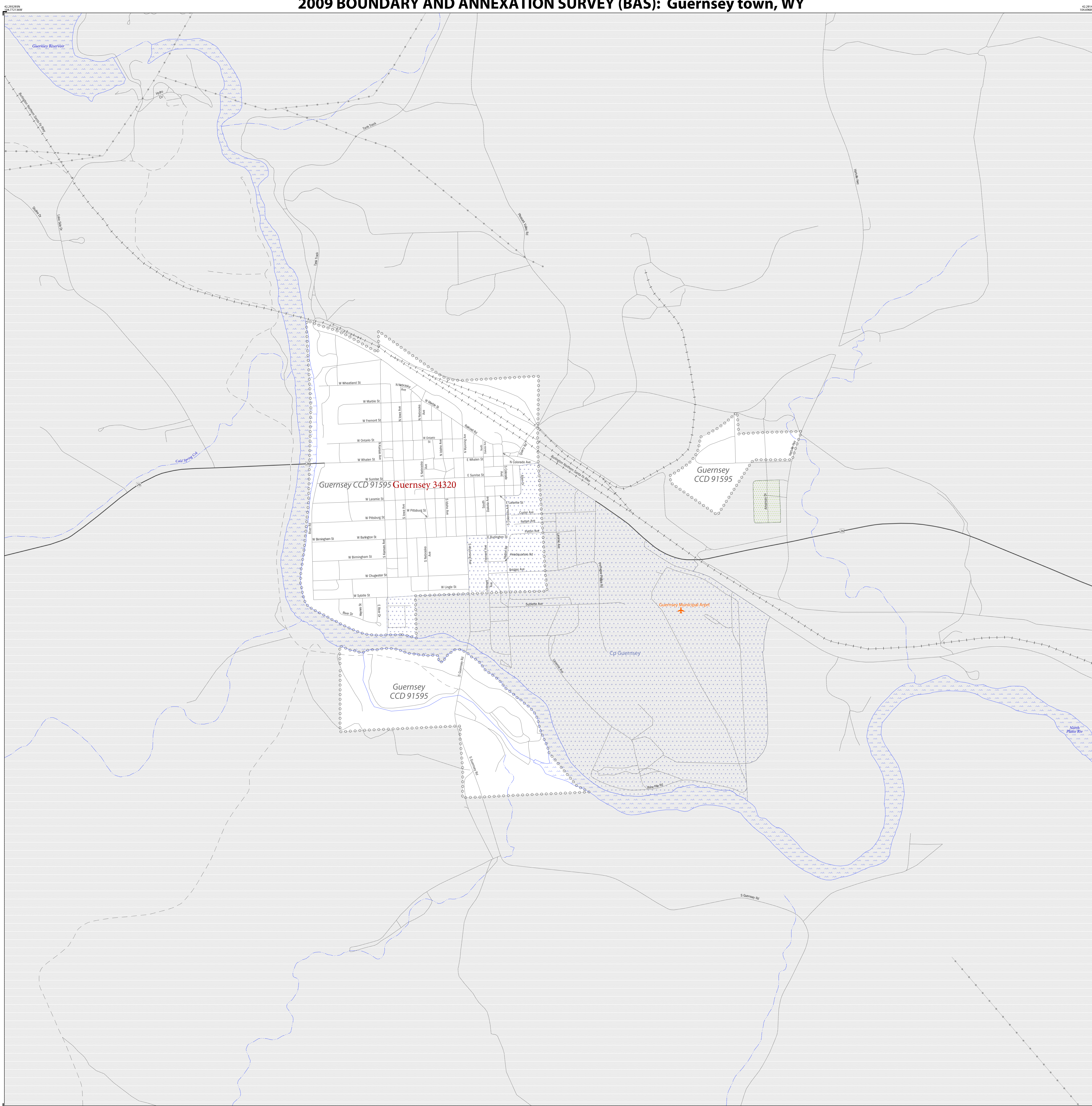


2009 BOUNDARY AND ANNEXATION SURVEY (BAS): Guernsey town, WY



2009 BAS MAP LEGEND

SYMBOL DESCRIPTION	SYMBOL	LABEL STYLE
Federal American Indian Reservation	*****	L'ANSE RESERVATION (TA 1880)
Off-Reservation Trust Land	+ + + + +	T1880
American Indian Tribal Subdivision	•••••	SHONTO (620)
Alaska Native Regional Corporation	▼▼▼▼▼	NANA ANRC 52120
American Indian Area (Hill)	•••••	
State (or statistically equivalent entity)	▧▧▧▧▧	NEW YORK 36
County (or statistically equivalent entity)	▣▣▣▣▣	ERIE 029
Minor Civil Division (MCD) ¹	○ ○ ○ ○ ○	Lee town 41460
Census County Division (CCD) ²	○ ○ ○ ○ ○	Jemez CCD 91650
Consolidated City	○ ○ ○ ○ ○	MILFORD 47500
Incorporated Place - Subject Area	○ ○ ○ ○ ○	Rome 63418
Incorporated Place - Other Area ³	○ ○ ○ ○ ○	Davis 18100
Census Designated Place (CDP) ²	○ ○ ○ ○ ○	Cochiti 16560

DESCRIPTION	SYMBOL	DESCRIPTION	SYMBOL
Interstate	— 2 —	Geographic Offset and Corridor	—
U.S. Highway	— 2 —	Water Body	— Pleasant Lake —
Other Road ⁴	—	Swamp or Marsh	— Okefenokee Swamp —
Circle	○	Glacier	— Breang Glacier —
Address Range Break ⁵	—	Airport	— Guernsey Municipal Airport —
4WD Trail, Walkway, Stairway, or Ferry	—	Cemetery	— Powell Cemetery —
Railroad	—	Golf Course	— Pinehurst GCRs —
Pipeline or Power Line	—	Military	— Fort Belvoir —
Ridge or Fence	—	National Park or Forest	— Yosemite NP —
Property Line	—	Other Park	— S.F. Park —
Nonvisible Boundary or Feature Not Elsewhere Classified	—	Mountain Peak	▲ Baker
Perennial Stream	— Guernsey Cr. —	Inset Area	A1
Intermittent Stream	— Piney Cr. —	Outside Subject Area	—

Where state, county, and/or MCD/CCD boundaries coincide, the map shows the boundary symbol for only the highest-ranking of these boundaries. Where American Indian reservation and American Indian tribal subdivision boundaries coincide, the map shows only the American Indian reservation boundaries.

1 'MCD' indicates a false MCD. These are for Census use only.
 2 The CCD and CDP boundaries represent statistical entities only. They are not to be updated through the BAS.
 3 Incorporated place name color correlates to the incorporated place fill color.
 4 Due to space limitations, some road names, along with other feature and geography names on the map, may not be shown.
 5 Address range break values represent the last address stored in the MAF/TIGER database for each street that crosses the boundary of your jurisdiction.

SIGNATURE BOX	
The corrected boundaries shown on the map are accurate as of January 1, 2009.	
Print Name	
Position	
Signature	
Telephone	Date

Sheet 1 of 1 PARENT sheets
 Total Sheets: 1 (Index 0; Parent 1; Inset 0)

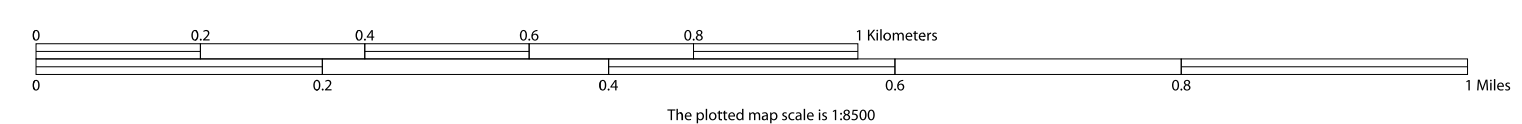
NAME: Guernsey town (34320)
 ENTITY TYPE: Incorporated Place
 ST: Wyoming (56)
 CO: Platte County (031)

All legal boundaries and names reported through the 2008 BAS. The boundaries shown on this map are for Census Bureau statistical data collection and tabulation purposes only; their depiction and designation for statistical purposes does not constitute a determination of jurisdictional authority or rights of ownership or entitlement.

Created by: U.S. Census Bureau's MAF/TIGER database (BAS09EL3126)
 Date: 25-OCT-08

U.S. DEPARTMENT OF COMMERCE Economics and Statistics Administration U.S. Census Bureau

Projection: Albers Equal Area Conic
 Datum: NAD 83
 Spheroid: GRS 80
 1st Standard Parallel: 41 39 47
 2nd Standard Parallel: 44 20 14
 Central Meridian: -107 33 13
 Latitude of Projection's Origin: 40 59 41
 False Easting: 0
 False Northing: 0



The Census Bureau has completed nationwide spatial enhancements through the MAF/TIGER Accuracy Improvement Project (MTAIP). These enhancements may have inadvertently introduced changes to the shape of your boundary. Please review your maps carefully and make corrections where needed.

If data outside of your entity is not shown on this map, you may request map coverage by calling 1-800-972-3651 or emailing geo.bas@census.gov.

USCENSUSBUREAU

INDEX OR PARENT SHEET #: 001
 INSET SHEET #: 000000

2009 BAS MAP (PARENT)
 415015660034320001000000