

DRAFT 4/18/08 for Interim Use Only

**CHAPTER 111: POLYTRAUMA REHABILITATION CENTER (PRC), TRANSITIONAL
POLYTRAUMA PROGRAM, and OUTPATIENT POLYTRAUMA CLINIC**

1	Purpose and Scope	111-2
2	Definitions.....	111-2
3	Operating Rationale and Basis of Criteria.....	111-4
4	Program Data Required (Input Data Questions)	111-5
5	Space Criteria.....	111-7
6	Design Considerations.....	111-18
7	Functional Relationships (matrix).....	111-19
8	Functional Diagram (bubble diagram or matrix)	111-20

1 PURPOSE AND SCOPE

- A. This document provides VA Space Planning Criteria for Chapter 111: Polytrauma Rehabilitation Center. It applies to the five PRC's within medical facilities at the Department of Veterans Affairs (VA).

Criteria approved by the Department of Veterans Affairs (VA) on April 15, 2008.

2 DEFINITIONS

- A. Activities of Daily Living (ADL) Area: A treatment area where a modified home environment is created to evaluate and retrain patients. This area includes a kitchen, bathroom, living and bedroom settings, and laundry.
- B. Affiliated: An arrangement whereby a school of medicine agrees to partially staff a VA facility with faculty physicians, residents and interns. In return, the VA provides the medical school with a venue to train new physicians. In this arrangement, the VA retains responsibility for the care of its patients while the school of medicine retains responsibility for all graduate level education and training.
- C. Cardiopulmonary Rehabilitation: A program that involves medical evaluation, prescribed exercise, education, and counseling of patients with cardiac disease in order to reverse the limitations caused by cardiac events. This program requires VHA approval and space for this function is determined on an individual project basis.
- D. Clinic Stop: A clinic stop is one encounter of a patient with a healthcare provider. Per these criteria, the clinic stop is the workload unit of measure for space planning. One individual patient can have multiple clinic stops in a single visit or in one day.
- E. Compensated Work Therapy: This program provides therapeutic sheltered workshop environments where veterans are paid on a piece-rate basis (based on the current federal hourly minimum wage) for work performed on contracts negotiated with private businesses. Patients work in a realistic, non-institutional working environment to further develop work tolerances and prevocational skills while promoting effective work habits and social skills. Patients work in this therapy for up to 6.5 hours daily.
- F. Concept of Operations: A user-developed guide to the functional operation of the VA healthcare facility. It defines the function of the facility and the scope of medical services to be provided in the new or remodeled space.
- G. Driver Training: This program provides disabled veterans instruction, practice, and evaluation of the special adaptive equipment needed to independently operate a motor vehicle.
- H. Educational Therapy: Treatment using activities designed to improve the educational skills of the patient.
- I. EMG: An acronym for Electromyogram. This is a test to evaluate nerve and muscle function.

- J. Full-Time Equivalent (FTE): A staffing parameter equal to the amount of time assigned to one full time employee. It may be composed of several part-time employees whose total time commitment equals that of a full-time employee. One FTE equals a 40 hours per week.
- K. Functional Area: The grouping of rooms and spaces based on their function within a clinical service. Typical Functional Areas are Reception Areas, Patient Areas, Support Areas, Staff and Administrative Areas, and Residency Program.
- L. Input Data Statement: A set of questions designed to elicit information about the healthcare project in order to create a Program for Design (PFD) based on the criteria parameters set forth in this document. Input Data Statements could be Mission related, based in the project's Concept of Operations; and Workload or Staffing related, based on projections and data provided by the VHA or the VISN about the estimated model of operation. This information is processed through mathematical and logical operations in VA-SEPS.
- M. Kinesiotherapy (KT): The application of scientifically based exercise principles adapted to enhance the strength, endurance, and mobility of individuals with functional limitations or those requiring extended physical conditioning.
- N. Net-to-department gross factor (NTDG): This number, when multiplied by the programmed net square foot (NSF) area, determines the departmental gross square feet (DGSF). The **NTDG** factor adopted for **Inpatient Polytrauma Rehabilitation Unit** is **1.65**, for the **Outpatient Polytrauma Rehabilitation Unit** is **1.50**, and for the **Transitional Polytrauma Rehabilitation Unit** is **1.55**.
- O. Occupational Therapy: Therapy based on engagement in meaningful activities of daily life such as self-care skills, education, work, and social interaction, to enable or encourage participation in such activities despite impairments or limitations in physical or mental functioning.
- P. Physical Medicine and Rehabilitation Service: A medical, multidisciplinary, team orientated treatment process designed to reduce the dysfunctional effects of a wide variety of social and physical disabilities.
- Q. Physical Medicine and Rehabilitation Service Provider: A medical professional providing patient care in the Physical Medicine and Rehabilitation Service who is a Psychiatrist, Physical Therapist, Occupational Therapist, Kinesiotherapist, or a Vocational Rehabilitation Therapist.
- R. Physical Therapy (PT): A treatment that provides therapeutic interventions for patients whose ability to function is impaired by disease, injury, or other causes. This includes those with pain, neuromuscular, musculoskeletal, cardiopulmonary, and integumentary conditions. Physical Therapy includes that prevention of injury and impairment through the promotion and maintenance of fitness.
- S. Program for Design (PFD): A space program based on criteria set forth in this document and specific information about Concept of Operations, workload projections and staffing levels authorized.
- T. Room Efficiency Factor: A factor that provides flexibility in the utilization of a room to account for patient delays, scheduling conflicts, and equipment maintenance.

Common factors are in the 80 to 85% range. A room with 80% room efficiency provides a buffer to assume that this room would be available 20% of the time beyond the planned operational practices of the room. This factor may be adjusted based on the actual and/or anticipated operations and processes of the room / department.

- U. SEPS (VA-SEPS): Acronym for Space and Equipment Planning System, a digital tool developed by the Department of Defense (DoD) and the Department of Veterans Affairs to generate a Program for Design (PFD) and an Equipment List for a VA healthcare project based on specific information entered in response to Input Data Questions. VA-SEPS incorporates the propositions set forth in all VHA Space Planning Criteria Chapters. VA-SEPS has been designed to aid healthcare planners in creating a space plan based on a standardized set of criteria parameters.
- V. Vocational Rehabilitation Therapy (VRT): A treatment that determines the jobs that are best suited for an individual through the use of interviews, evaluation of abilities, and tests of manual and physical skills. VRT services are associated most often with Employment Services Program and there is a renewed interest in this program associated with the VA's younger population.
- W. Work Evaluation Program: A program that identifies personal barriers to obtaining and maintaining employment including vocational, behavioral, emotional, attitudinal, and social barriers in order to identify appropriate employment options.
- X. Workload: Workload is the anticipated number of procedures or suite stops that is processed through a department/service area. The total workload applied to departmental operational assumptions will determine overall room requirements by modality.

3 OPERATING RATIONALE AND BASIS OF CRITERIA

- A. Workload Projections or planned services / modalities for a specific VA medical center, hospital or satellite outpatient clinic project are provided by the VA Central Office (VACO) / or VSSC Projection Model. The workload projections are generated by methodology based upon the expected veteran population in the respective market/service area. Healthcare planners working on VA medical center, hospital or satellite outpatient clinic projects will utilize and apply the workload criteria set forth herein for identified services and modalities to determine room requirements for each facility. *This document does not include the latest Workload Projections for the Inpatient, Outpatient, or Transitional Polytrauma programs, as these projections are being compiled at this writing.
- B. Space planning criteria have been developed on the basis of an understanding of the activities involved in the functional areas of the Polytrauma Rehabilitation Centers and their relationships with other services of a medical facility. These criteria are based on established and/or projected best practice standards, as adapted to provide environments supporting the highest quality health care for Veterans.
- C. These criteria are subject to modification relative to development in the equipment, medical practice, vendor requirements, and subsequent planning and design. The

selection of the size and type of Eye Clinic equipment is determined by VACO and upon Veterans Health Administration (VHA) anticipated medical needs.

D. Room capacity per year should be based on:

$$\frac{\text{Operating days per year} \times \text{Hours of operation per day}}{\text{Minutes per procedure} / 60 \text{ minutes}} = \text{Number of annual procedures}$$

- 1 The general planning model for VA facilities assumes 250 Operating Days per Year and 8 Hours of Operation per Day. Room capacity will fluctuate as hours of operation are modified, i.e., additional capacity may be generated by extending the daily hours of operation within the same physical setting.
- 2 The Basic Room Efficiency Factor for Polytrauma Rehabilitation Center is 85%.

The number of annual clinic stops per patient area will be used as a criteria parameter to calculate the number of Exam / Treatment Stations in the Space Criteria section of this document.

4 PROGRAM DATA REQUIRED (Input Data Questions)

- A. Is an Inpatient Unit authorized for this facility? (M)
1. How many Inpatient Beds are authorized? (12 or 18?) (W)
 2. How many Inpatient Unit Ward Clerk FTE positions are authorized? (S)
 3. How many Inpatient Unit Nurse Manager FTE positions are authorized? (S)
 4. How many Inpatient Unit Social Worker FTE positions are authorized? (S)
 5. How many Inpatient Unit CCRN Case Manager FTE positions are authorized? (S)
 6. How many Inpatient Unit Nurse Educator FTE positions are authorized? (S)
 7. How many Inpatient Unit Counseling Psychologist FTE positions are authorized? (S)
 8. How many Inpatient Unit Neuropsychologist FTE positions are authorized? (S)
 9. How many Inpatient Unit Family Therapist FTE positions are authorized? (S)
 10. How many Inpatient Unit Blind Rehabilitation Specialist FTE positions are authorized? (S)
 11. How many Inpatient Unit Physical Therapist FTE positions are authorized? (S)
 12. How many Inpatient Unit Recreational Therapist FTE positions are authorized? (S)
 13. How many Inpatient Unit Occupational Therapist FTE positions are authorized? (S)
 14. How many Inpatient Unit Speech Therapist FTE positions are authorized? (S)
 15. How many Inpatient Unit Military Liaison FTE positions are authorized? (S)
 - a. Total number of Inpatient Unit FTE positions authorized (Computer calculated value, no user input needed)
- B. Is an Outpatient Unit authorized for this facility? (M)
1. How many Outpatient Units are authorized? (Misc)

2. How many Outpatient Unit Psychiatrist FTE positions are authorized? (S)
 3. How many Outpatient Unit Neuropsychologist FTE positions are authorized? (S)
 4. How many Outpatient Unit Blind Rehabilitation Specialist FTE positions are authorized? (S)
 5. How many Outpatient Unit Certified Driver Trainer FTE positions are authorized? (S)
 6. How many Outpatient Unit Physical Therapist FTE positions are authorized? (S)
 7. How many Outpatient Unit Recreational Therapist FTE positions are authorized? (S)
 8. How many Outpatient Unit Occupational Therapist FTE positions are authorized? (S)
 9. How many Outpatient Unit Military Liaison FTE positions are authorized? (S)
 10. How many Outpatient Unit Speech Language Pathologist FTE positions are authorized? (S)
 11. How many Outpatient Unit Nurse Case Manager FTE positions are authorized? (S)
 - a. Total number of Outpatient Unit FTE positions authorized (Computer calculated value, no user input needed)
- C. Are Transitional Rehabilitation Units authorized for this facility? (M)
1. How many Transitional Rehabilitation Units are authorized? (Misc)
 2. How many Transitional Rehabilitation Unit Ward Clerk FTE positions are authorized? (S)
 3. How many Transitional Rehabilitation Unit Psychiatrist FTE positions are authorized? (S)
 4. How many Transitional Rehabilitation Unit Recreational Therapist FTE positions are authorized? (S)
 5. How many Transitional Rehabilitation Unit Occupational Therapist FTE positions are authorized? (S)
 6. How many Transitional Rehabilitation Unit Case Manager / Social Worker FTE positions are authorized? (S)
 7. How many Transitional Rehabilitation Unit Psychologist / Neuropsychologist FTE positions are authorized? (S)
 8. How many Transitional Rehabilitation Unit Speech Language Pathologist FTE positions are authorized? (S)
 - a. Total number of Transitional Rehabilitation Unit FTE positions authorized (Computer calculated value, no user input needed)

5 SPACE CRITERIA

A. Inpatient / Outpatient Units: Reception Areas

1. **Lobby (LOB01)**300 NSF (27.9 NSM)
Provide one per Inpatient / Outpatient Unit Lobby Area.

2. **Reception (WRC01)**.....150 NSF (14.0 NSM)
Provide one per Inpatient / Outpatient Unit Lobby.

Includes an Information Desk.

3. **Toilet, Visitor (TLTU1)**.....50 NSF (4.7 NSM)
Provide two per Inpatient / Outpatient Unit Lobby.

4. **Vending Area (BX001)**.....50 NSF (4.7 NSM)
Provide one per Inpatient / Outpatient Unit Lobby.

A. Inpatient Unit: Patient Areas

1. **Sub Waiting (WRC01)**100 NSF (9.3 NSM)

Minimum NSF; Provide one per each 12-bed Inpatient Unit authorized; provide an additional 50 NSF if an 18-bed Inpatient Unit is authorized.

This space includes visitor waiting.

2. **Patient Room, One-Bed (BRPT1)**300 NSF (27.9 NSM)
Provide eleven if a 12-bed Inpatient Unit is authorized; provide an additional five if an 18-bed Inpatient Unit is authorized.

3. **Bathroom, Patient (TLTS2)**75 NSF (7.0 NSM)
Provide seven if a 12-bed Inpatient Unit is authorized; provide an additional three if an 18-bed Inpatient Unit is authorized.

Allocated area includes enclosed shower.

4. **Bathroom, Patient, Shower Litter (TLTS2)**.....100 NSF (9.3 NSM)
Provide four if a 12-bed Inpatient Unit is authorized; provide an additional two if an 18-bed Inpatient Unit is authorized.

Allocated area includes larger enclosed shower to accommodate litter.

5. **Isolation Patient Room, One-Bed (BRPT2)**.....300 NSF (27.9 NSM)
Provide one if a 12-bed Inpatient Unit is authorized; provide an additional one if an 18-bed Inpatient Unit is authorized.

This room should be Negative Pressure.

6. **Isolation Bathroom, Patient (TLTS2)**.....**75 NSF (7.0 NSM)**
Provide one if a 12-bed Inpatient Unit is authorized; provide an additional one if an 18-bed Inpatient Unit is authorized.

This room should be Negative Pressure, allocated area includes enclosed shower.

7. **Isolation Anteroom (BRAR1)****50 NSF (4.7 NSM)**
Provide one if a 12-bed Inpatient Unit is authorized; provide an additional one if an 18-bed Inpatient Unit is authorized.

8. **Dining Room (FSCD1)**.....**400 NSF (37.2 NSM)**
Minimum NSF if a 12-bed Inpatient Unit is authorized; provide an additional 200 NSF if an 18-bed Inpatient Unit is authorized.

This space is for patient use and therapeutic treatment.

9. **Living Room, Family Support (DAYR1)****500 NSF (46.5 NSM)**
Minimum NSF if a 12-bed Inpatient Unit is authorized; provide an additional 100 NSF if an 18-bed Inpatient Unit is authorized.

10. **Day Room, Patient (DAYR1)****720 NSF (66.9 NSM)**
Minimum NSF if a 12-bed Inpatient Unit is authorized; provide an additional 130 NSF if an 18-bed Inpatient Unit is authorized.

11. **Recreational Computer Activities Room (CMP01)****200 NSF (18.6 NSM)**
Minimum NSF if a 12-bed Inpatient Unit is authorized; provide an additional 100 NSF if an 18-bed Inpatient Unit is authorized.

12. **Laundry Room, Patient (LAUN1)**.....**120 NSF (11.2 NSM)**
Minimum NSF if a 12-bed Inpatient Unit is authorized; provide an additional 40 NSF if an 18-bed Inpatient Unit is authorized.

13. **Storage, Patient Baggage (SRS01)****120 NSF (11.2 NSM)**
Minimum NSF if a 12-bed Inpatient Unit is authorized; provide an additional 40 NSF if an 18-bed Inpatient Unit is authorized.

14. **Quiet Room (DAYR1)****120 NSF (11.2 NSM)**
Minimum NSF if a 12-bed Inpatient Unit is authorized; provide an additional 40 NSF if an 18-bed Inpatient Unit is authorized.

15. **Multipurpose Room (CRA02)**.....**300 NSF (27.9 NSM)**
Minimum NSF if a 12-bed Inpatient Unit is authorized; provide an additional 150 NSF if an 18-bed Inpatient Unit is authorized.

This space is intended for family meetings, conferencing, education sessions, and celebrations.

16. **Gym, Rehabilitation Therapy (PTEA1)****2000 NSF (185.8 NSM)**
Minimum NSF if a 12-bed Inpatient Unit is authorized; provide an additional 500 NSF if an 18-bed Inpatient Unit is authorized.

17. **Apartment, Living Skills Training (PRC01)**.....450 NSF (41.9 NSM)
Provide one per each Inpatient Unit authorized.
18. **Exam / Treatment Room, PM&R (EXRG0)**..... 120 NSF (11.2 NSM)
Provide one if a 12-bed Inpatient Unit is authorized; provide an additional one if an 18-bed Inpatient Unit is authorized.
19. **Recreation Therapy Room, Group (CRA03)** 500 NSF (46.5 NSM)
Minimum NSF if a 12-bed Inpatient Unit is authorized; provide an additional 200 NSF if an 18-bed Inpatient Unit is authorized.
20. **Testing Lab, Neuropsychology (OFDC2)**..... 120 NSF (11.2 NSM)
Minimum NSF if a 12-bed Inpatient Unit is authorized; provide an additional 30 NSF if an 18-bed Inpatient Unit is authorized.
21. **BROS Treatment / Office (OFA02)**.....650 NSF (60.4 NSM)
Minimum NSF if a 12-bed Inpatient Unit is authorized; provide an additional 150 NSF if an 18-bed Inpatient Unit is authorized.

If an Inpatient Unit is not authorized, then this space will be located within the Outpatient Unit.

22. **Therapy Room, Group (CRA02)** 240 NSF (22.3 NSM)
Minimum NSF if a 12-bed Inpatient Unit is authorized; provide an additional 60 NSF if an 18-bed Inpatient Unit is authorized.
23. **Kitchen, OT Training (OTDL1)**300 NSF (27.9 NSM)
Minimum NSF if a 12-bed Inpatient Unit is authorized; provide an additional 150 NSF if an 18-bed Inpatient Unit is authorized.
24. **Toilet, Patient (TLTU1)**50 NSF (4.7 NSM)
Provide two if a 12-bed Inpatient Unit is authorized; provide an additional two if an 18-bed Inpatient Unit is authorized.

A. Inpatient Unit: Support Areas

1. **Nourishment Room (NCWD1)**.....100 NSF (9.3 NSM)
Minimum NSF if a 12-bed Inpatient Unit is authorized; provide an additional 40 NSF if an 18-bed Inpatient Unit is authorized.
2. **Alcove, Food Carts (FSCS1)**.....100 NSF (9.3 NSM)
Minimum NSF if a 12-bed Inpatient Unit is authorized; provide an additional 40 NSF if an 18-bed Inpatient Unit is authorized.
3. **Linen Room (LCCL1)**60 NSF (5.6 NSM)
Minimum NSF if a 12-bed Inpatient Unit is authorized; provide an additional 20 NSF if an 18-bed Inpatient Unit is authorized.

4. **Utility Room, Clean (UCCL1)**100 NSF (9.3 NSM)
Minimum NSF if a 12-bed Inpatient Unit is authorized; provide an additional 40 NSF if an 18-bed Inpatient Unit is authorized.
5. **Utility Room, Soiled (USCL1)**80 NSF (7.4 NSM)
Minimum NSF if a 12-bed Inpatient Unit is authorized; provide an additional 20 NSF if an 18-bed Inpatient Unit is authorized.
6. **Storage, Medical Equipment (SRE01)**.....100 NSF (9.3 NSM)
Minimum NSF if a 12-bed Inpatient Unit is authorized; provide an additional 40 NSF if an 18-bed Inpatient Unit is authorized.
7. **Storage, Patient Care Equipment (SRE01)**240 NSF (22.3 NSM)
Minimum NSF if a 12-bed Inpatient Unit is authorized; provide an additional 60 NSF if an 18-bed Inpatient Unit is authorized.

This space is used for specialty beds/chairs, wheelchairs, and litters.

8. **Storage, Building Management (SRE01)**80 NSF (7.4 NSM)
Minimum NSF if a 12-bed Inpatient Unit is authorized; provide an additional 20 NSF if an 18-bed Inpatient Unit is authorized.
9. **Storage, Recreation Equipment (SRE01)**.....100 NSF (9.3 NSM)
Minimum NSF if a 12-bed Inpatient Unit is authorized; provide an additional 40 NSF if an 18-bed Inpatient Unit is authorized.
10. **Storage, PM&RS (SRE01)**100 NSF (9.3 NSM)
Minimum NSF if a 12-bed Inpatient Unit is authorized; provide an additional 40 NSF if an 18-bed Inpatient Unit is authorized.
11. **Storage, Neuropsychology Testing (SRE01)**.....100 NSF (9.3 NSM)
Minimum NSF if a 12-bed Inpatient Unit is authorized; provide an additional 40 NSF if an 18-bed Inpatient Unit is authorized.
12. **Housekeeping Aides Closet – HAC (JANC1)**.....40 NSF (3.7 NSM)
Provide one if a 12-bed Inpatient Unit is authorized; provide an additional one if an 18-bed Inpatient Unit is authorized.

B. Inpatient Unit: Staff and Administrative Areas

1. **Office, PRC Chief / Medical Director (OFM03)**.....150 NSF (13.9 NSM)
Provide one per each Inpatient Unit authorized.
2. **Office, Administrative Officer (OFA02)**120 NSF (11.2 NSM)
Provide one per each Inpatient Unit authorized.
3. **Office, Program Assistant (OFA02)**.....120 NSF (11.2 NSM)
Provide one per each Inpatient Unit authorized.
4. **Office, Ward Clerk (OFA02)**80 NSF (7.4 NSM)
Provide one per each Inpatient Unit Ward Clerk FTE authorized.

5. **Office, Nurse Manager (OFA02)** 120 NSF (11.2 NSM)
Provide one per each Inpatient Unit Nurse Manager FTE authorized.

6. **Office, Social Worker (OFA02)** 120 NSF (11.2 NSM)
Provide four per each Inpatient Unit Social Work FTE authorized.

This space is for Admission, Follow-up and Lead positions.

7. **Office, CCRN Case Manager (OFA02)**..... 120 NSF (11.2 NSM)
Provide one per each Inpatient Unit authorized.

8. **Office, Nurse Educator (OFA02)**..... 120 NSF (11.2 NSM)
Provide one per each Inpatient Unit Nurse Educator FTE authorized.

9. **Office, Counseling Psychologist (OFA02)**..... 120 NSF (11.2 NSM)
Provide one per each Inpatient Unit Counseling Psychology FTE authorized.

10. **Office, Neuropsychologist (OFA02)** 120 NSF (11.2 NSM)
Provide one per each Inpatient Unit authorized

11. **Office, Family Therapist (OFA02)**..... 120 NSF (11.2 NSM)
Provide one per each Inpatient Unit authorized.

12. **Office, Blind Rehabilitation Specialist (OFA02)** 120 NSF (11.2 NSM)
Provide one per each Inpatient Unit authorized.

13. **Office, Physical Therapist (OFA02)**..... 150 NSF (14.0 NSM)
Provide one if one or two Inpatient Unit Physical Therapy FTEs are authorized.

This is a shared office for a maximum of two Physical Therapy FTEs. Locate this space close to or within the Rehabilitation Therapy Gym.

14. **Office, Recreational Therapist (OFA02)**..... 150 NSF (14.0 NSM)
Provide one if one or two Inpatient Unit Recreational Therapy FTEs are authorized.

This is a shared office for a maximum of two Recreational Therapy FTEs.

15. **Office, Occupational Therapist (OFA02)**..... 150 NSF (14.0 NSM)
Provide one if one or two Inpatient Unit Occupational Therapy FTEs are authorized

This is a shared office for a maximum of two Occupational Therapy FTEs. Locate this space close to or within the Rehabilitation Therapy Gym.

16. **Office, Speech Therapist (OFA02)** 120 NSF (11.2 NSM)
Provide three per each Inpatient Unit authorized.

17. **Office, Military Liaison (OFA02)** 150 NSF (14.0 NSM)
*Provide one if one or two Inpatient Unit Military Liaison FTEs are authorized.
Provide and additional one if three or four Inpatient Unit Military Liaison FTEs are authorized.*

This is a shared office for a maximum of two Military Liaison FTEs.

18. **Nurse Station, Inpatient (NSTA1)****300 NSF (27.9 NSM)**
Minimum NSF if a 12-bed Inpatient Unit is authorized; provide an additional 100 NSF if an 18-bed Inpatient Unit is authorized.

19. **Medication Room (MEDP1)**.....**120 NSF (11.2 NSM)**
Minimum NSF if a 12-bed Inpatient Unit is authorized; provide an additional 30 NSF if an 18-bed Inpatient Unit is authorized.

20. **Report Room, Nurse (CRA02)****200 NSF (18.6 NSM)**
Minimum NSF if a 12-bed Inpatient Unit is authorized; provide an additional 50 NSF if an 18-bed Inpatient Unit is authorized.

21. **Conference Room, Interdisciplinary Treatment Team (CRA02)****300 NSF (27.9 NSM)**
Minimum NSF if a 12-bed Inpatient Unit is authorized; provide an additional 50 NSF if an 18-bed Inpatient Unit is authorized.

22. **Conference Room, Inpatient Care Planning (CRA02)****300 NSF (27.9 NSM)**
Minimum NSF if a 12-bed Inpatient Unit is authorized; provide an additional 50 NSF if an 18-bed Inpatient Unit is authorized.

23. **Team Room, Interns / Residents (CRA02)** **200 NSF (18.6 NSM)**
Provide one per each Inpatient Unit authorized.

24. **Lounge, Staff (SL001)****80 NSF (7.5 NSM)**
Minimum NSF; provide an additional 15 NSF per each FTE position authorized greater than five; maximum 210 NSF.

For less than five FTE combine Lounge facilities with adjacent department or sum in chapter 410.

25. **Locker Room, Staff (LR001)****80 NSF (7.5 NSM)**
Minimum NSF if total number of Clerical FTE positions authorized is between five and thirteen; provide an additional 6 NSF per Technician FTE position authorized greater than thirteen; provide locker space only for those FTEs without assigned office or cubicle space.

26. **Toilet, Staff (TLTU1)****50 NSF (4.7 NSM)**
Minimum one; provide an additional staff toilet for each increment of five FTE positions authorized greater than fifteen

27. **Shower, Inpatient Unit Staff (SHWR1)****75 NSF (6.5 NSM)**
Provide one per each PRC Inpatient Unit authorized.

A. Outpatient Unit: Patient Areas

1. **Sub Waiting (WRC01)****150 NSF (13.9 NSM)**

Provide one per each Outpatient Unit authorized.

2. **Patient Lounge / Homeroom (DAYR1)**240 NSF (22.3 NSM)
Provide one per each Outpatient Unit authorized.

For patient socialization and waiting space.

3. **Exam Room, PRC Outpatient (EXRG0)**.....120 NSF (11.2 NSM)
Provide four per each Outpatient Unit authorized.

4. **Cognitive Therapy / Counseling Room (OFA02)**120 NSF (11.2 NSM)
Provide two per each Outpatient Unit authorized.

Quiet interviewing and treatment space for Psychology/Neuropsychology.

5. **Procedure Room, PRC Outpatient (TRGM1)**240 NSF (22.3 NSM)
Provide one per each Outpatient Unit authorized.

6. **Group Room (CRA02)**240 NSF (22.3 NSM)
Provide two per each Outpatient Unit authorized.

7. **Driver Training Room (PRC02)**.....400 NSF (37.2 NSM)
Provide one per each Outpatient Unit authorized.

Includes office space for Driver Training staff and simulator equipment.

8. **Living Skills Training (OTDL1)**300 NSF (27.9 NSM)
Provide one per each Outpatient Unit authorized.

Work hardening and vocational rehabilitation training spaces.

9. **Gait Study Track and Instrumentation Room (PTGL1)**600 NSF (55.7 NSM)
Provide one per each Outpatient Unit authorized.

10. **Gym, Patient Rehabilitation Therapy (PTEA1)**900 NSF (83.8 NSM)
Provide one per each Outpatient Unit authorized.

In addition to allocated NSF, include Physical Therapy and Occupational Therapy Office space in the gym.

11. **Speech Therapy Lab (XXYYZ)**300 NSF (27.9 NSM)
Provide one per each Outpatient Unit authorized.

12. **Assistive Technology Lab (XXYYZ)**1000 NSF (93.0 NSM)
Provide one per each Outpatient Unit authorized.

Includes displays and educational/treatment modules for various assistive devices and technology.

13. **BROS Treatment / Office (OFA02)**.....650 NSF (60.4 NSM)

Minimum NSF if a 12-bed Inpatient Unit is authorized; provide an additional 150 NSF if an 18-bed Inpatient Unit is authorized.

If an Inpatient Unit is not authorized, then this space will be located within the Outpatient Unit.

B. Outpatient Unit: Support Areas

1. **Linen Room (LCCL1)**60 NSF (5.6 NSM)
Provide one per each Outpatient Unit authorized.
2. **Utility Room, Clean (UCCL1)**100 NSF (9.3 NSM)
Provide one per each Outpatient Unit authorized.
3. **Utility Room, Soiled (USCL1)**80 NSF (7.5 NSM)
Provide one per each Outpatient Unit authorized.
4. **Storage, Medical Equipment (SRE01)**.....100 NSF (9.3 NSM)
Provide one per each Outpatient Unit authorized.
5. **Storage, Building Management (SRE01)**80 NSF (7.5 NSM)
Provide one per each Outpatient Unit authorized.
6. **Housekeeping Aides Closet – HAC (JANC1)**.....40 NSF (3.8 NSM)
Provide one per each Outpatient Unit authorized.

C. Outpatient Unit: Staff and Administrative Areas

1. **Office, Psychiatrist (OFA02)**120 NSF (11.2 NSM)
Provide one per each Outpatient Unit authorized.
2. **Office, Neuropsychologist (OFA02)**120 NSF (11.2 NSM)
Provide one per each Outpatient Unit authorized.
3. **Office, Physical Therapist (OFA02)**.....150 NSF (14.0 NSM)
Provide one if one or two Outpatient Unit Physical Therapy FTEs are authorized.

This is a shared office for a maximum of two Physical Therapy FTEs. Locate this space within the Rehabilitation Therapy Gym.

4. **Office, Recreational Therapist (OFA02)**120 NSF (11.2 NSM)
Provide one per each Outpatient Unit authorized.
5. **Office, Occupational Therapist (OFA02)**.....150 NSF (14.0 NSM)
Provide one if one or two Outpatient Unit Occupational Therapy FTEs are authorized.

This is a shared office for a maximum of two Occupational Therapy FTEs. Locate this space within the Rehabilitation Therapy Gym.

6. **Office, Military Liaison (OFA02)**150 NSF (14.0 NSM)
Provide one if one or two Outpatient Unit Military Liaison FTEs are authorized.

This is a shared office for a maximum of two Military Liaison FTEs.
7. **Office, Speech Language Pathologist (OFA02)**.....120 NSF (11.2 NSM)
Provide one per each Outpatient Unit authorized.
8. **Office, Nurse Case Manager (OFA02)**120 NSF (11.2 NSM)
Provide one per each Outpatient Unit authorized.
9. **Medication Room (MEDP1)**.....120 NSF (11.2 NSM)
Provide one per each Outpatient Unit authorized.
10. **Conference Room, Outpatient (CRA02)**.....240 NSF (22.3 NSM)
Provide one per each Outpatient Unit authorized.
11. **Locker Room, Staff (LR001)**80 NSF (7.5 NSM)
Minimum NSF if total number of Clerical FTE positions authorized is between five and thirteen; provide an additional 6 NSF per Technician FTE position authorized greater than thirteen; provide locker space only for those FTEs without assigned office or cubicle space.
12. **Toilet, Staff (TLTU1)**50 NSF (4.7 NSM)
Minimum one; provide an additional staff toilet for each increment of five FTE positions authorized greater than fifteen

C. Transitional Unit: Reception Areas

1. **Reception (WRC01)**.....150 NSF (14.0 NSM)
Provide one per Transitional Unit.

Includes an Information Desk.
2. **Toilet, Visitor (TLTU1)**.....50 NSF (4.7 NSM)
Provide two per Transitional Unit.

D. Transitional Unit: Patient Areas

1. **Sub Waiting (WRC01)**100 NSF (9.3 NSM)
Provide one per each Transitional Unit authorized.
2. **Patient Room, Transitional, One-Bed (BRPT3)**140 NSF (13.0 NSM)
Provide ten per Transitional Unit authorized.
3. **Bathroom, Patient (TLTS2)**75 NSF (7.0 NSM)
Provide ten per Transitional Unit authorized.
4. **Apt: Patient Room, Transitional, One-Bed (BRPT3)**140 NSF (13.0 NSM)

Provide two per each Transitional Unit authorized.

5. **Apt: Patient Bathroom (TLTS2)**75 NSF (7.0 NSM)
Provide two per each Transitional Unit authorized.
6. **Apt: Kitchenette / Laundry (PRC03)**.....130 NSF (12.1 NSM)
Provide two per each Transitional Unit authorized.
7. **Apt: Living Room (DAYR1)**.....140 NSF (13.0 NSM)
Provide two per each Transitional Unit authorized.
8. **Apt: Patient Storage (SRS01)**60 NSF (5.6 NSM)
Provide two per each Transitional Unit authorized.
9. **Group Living Room (DAYR1)**400 NSF (37.2 NSM)
Provide one per each Transitional Unit authorized.
10. **Group Dining Room (FSCD1)**300 NSF (27.9 NSM)
Provide one per each Transitional Unit authorized.
11. **Group Kitchen (OTDL1)**300 NSF (27.9 NSM)
Provide one per each Transitional Unit authorized.
12. **Laundry Room, Patient (LAUN1)**.....120 NSF (11.2 NSM)
Provide one per each Transitional Unit authorized.
13. **Gym, Rehabilitation Therapy (PTEA1)**.....500 NSF (46.5 NSM)
Provide one per each Transitional Unit authorized.
14. **Recreational Computer Activities Room (CMP01)**200 NSF (18.6 NSM)
Provide one per each Transitional Unit authorized.

D. Transitional Unit: Support Areas

1. **Nourishment Room (NCWD1)**.....100 NSF (9.3 NSM)
Provide one per each Transitional Unit authorized.
2. **Alcove, Food Carts (FSCS1)**.....100 NSF (9.3 NSM)
Provide one per each Transitional Unit authorized.
3. **Linen Room (LCCL1)**60 NSF (5.6 NSM)
Provide one per each Transitional Unit authorized
4. **Utility Room, Clean (UCCL1)**100 NSF (9.3 NSM)
Provide one per each Transitional Unit authorized
5. **Utility Room, Soiled (USCL1)**80 NSF (7.5 NSM)
Provide one per each Transitional Unit authorized
6. **Storage, Medical Equipment (SRE01)**.....100 NSF (9.3 NSM)
Provide one per each Transitional Unit authorized.

7. **Storage, Building Management (SRE01)**80 NSF (7.5 NSM)
Provide one per each Transitional Unit authorized.
8. **Housekeeping Aides Closet – HAC (JANC1)**.....40 NSF (3.7 NSM)
Provide one per each Transitional Unit authorized.

E. Transitional Unit: Staff and Administrative Areas

1. **Office, Ward Clerk (OFA02)**80 NSF (7.5 NSM)
Provide one per each Transitional Unit authorized
2. **Office, Psychiatrist (OFA02)**.....120 NSF (11.2 NSM)
Provide one if Transitional Unit is authorized.
3. **Office, Recreational Therapist (OFA02)**.....150 NSF (13.9 NSM)
Provide one if one or two Transitional Unit Recreational Therapy FTEs are authorized.

This is a shared office for a maximum of two Recreational Therapy FTEs.

4. **Office, Occupational Therapist (OFA02)**.....150 NSF (13.9 NSM)
Provide one if one or two Transitional Unit Occupational Therapy FTEs are authorized.

This is a shared office for a maximum of two Occupational Therapy FTEs.
Locate this space within the Rehabilitation Therapy Gym.

5. **Office, Case Manager / Social Worker (OFA02)**.....120 NSF (11.2 NSM)
Provide two per each Transitional Unit authorized.
6. **Office, Psychologist / Neuropsychologist (OFA02)**.....120 NSF (11.2 NSM)
Provide two per each Transitional Unit authorized.
7. **Office, Speech Language Pathologist (OFA02)**.....120 NSF (11.2 NSM)
Provide one per each Transitional Unit authorized.
8. **Nurse Station (NSTA1)**.....160 NSF (14.9 NSM)
Provide one per each Transitional Unit authorized.
9. **Treatment, Cognitive Therapy (OFA02)**120 NSF (11.2 NSM)
Provide two per each Transitional Unit authorized.
10. **Medication Room (MEDP1)**.....120 NSF (11.2 NSM)
Provide one per each Transitional Unit authorized.
11. **Conference Room, Transitional (CRA02)**240 NSF (22.3 NSM)
Provide one per each Transitional Unit authorized.
12. **Lounge, Staff (SL001)**80 NSF (7.5 NSM)

Minimum NSF; provide an additional 15 NSF per each FTE position authorized greater than five; maximum 210 NSF.

For less than five FTE combine Lounge facilities with adjacent department or sum in chapter 410.

13. **Locker Room, Staff (LR001)****80 NSF (7.5 NSM)**
Minimum NSF if total number of Clerical FTE positions authorized is between five and thirteen; provide an additional 6 NSF per Technician FTE position authorized greater than thirteen; provide locker space only for those FTEs without assigned office or cubicle space.
14. **Toilet, Staff (TLTU1)****50 NSF (4.7 NSM)**
Minimum one; provide an additional staff toilet for each increment of five FTE positions authorized greater than fifteen
15. **Shower, Transitional Unit Staff (SHWR1)****75 NSF (7.0 NSM)**
Provide one per each Transitional Unit authorized.

6 PLANNING AND DESIGN CONSIDERATIONS

- A. Net-to-department gross factor (**NTDG**) for **Physical Medicine and Rehabilitation Service** is **1.50**. This number when multiplied by the programmed net square foot (NSF) area determines the departmental gross square feet.
- B. For efficiency in programming and planning combine and co-locate waiting, reception, and restroom functions and spaces of related services/departments.
- C. Physical Medicine and Rehabilitation Services should be located near the main entrance to the facility in order to decrease the travel distance for patients with mobility limitations.
- D. A strong relationship between Physical Medicine and Rehabilitation Service, the SCI Patient Care Unit, and Prosthetics and Sensory Aids Service should be maintained and these services should be located within close proximity to each other.
- E. Other services including Ambulatory Care, Day Hospital, Day Treatment Center, Dialysis Center, Mental Hygiene Clinic, Substance Abuse Patient Care Units, MS&S Patient Care Units, Nursing Home Care, Psychiatric Patient Care Units, respiratory Patient Care Units, Psychiatric Service Administration, Social work Service Administration, Recreation, Audiology and Speech Pathology, and Voluntary Service have a direct relationship to Physical Medicine and Rehabilitation Service, but may be more remotely located from each other.
- F. Physical Therapy, Occupational Therapy, and Kinesiotherapy should be co-located and efficiencies may be achieved through the use of shared space and equipment.

7 FUNCTIONAL RELATIONSHIPS

TABLE 2: FUNCTIONAL RELATIONSHIP MATRIX

SERVICES	RELATIONSHIP	REASON
Patient Care Units - SCI	3	A
Prosthetics and Sensory Aids Service	3	G,H,
Recreation Service	1	A,C,G,H,I
Administration Offices - SCI	3	A
Eye Clinic	3	C,G,H,I
Ambulatory Care	3	H
Day Hospital	4	H
Day Treatment Center	4	H
Dialysis Center	4	H
Mental Hygiene Clinic	4	H
Patient Care Units – Substance Abuse	4	H
Patient Care Units – MS&N	3	G
Patient Care Units – Nursing Home Care	4	G
Patient Care Units - Psychiatric	2	A,C,G,H,I
Patient Care Units - Respiratory	3	A,B
Psychiatric Service Administration	2	A,C,G,H,I
Social Work Service Administration	1	A,C,G H,I
Voluntary Service	3	A

Legend:

Relationship

- 1. Adjacent
- 2. Close / Same Floor
- 3. Close / Different Floor
- Acceptable
- 4. Limited Traffic
- X. Separation Desirable

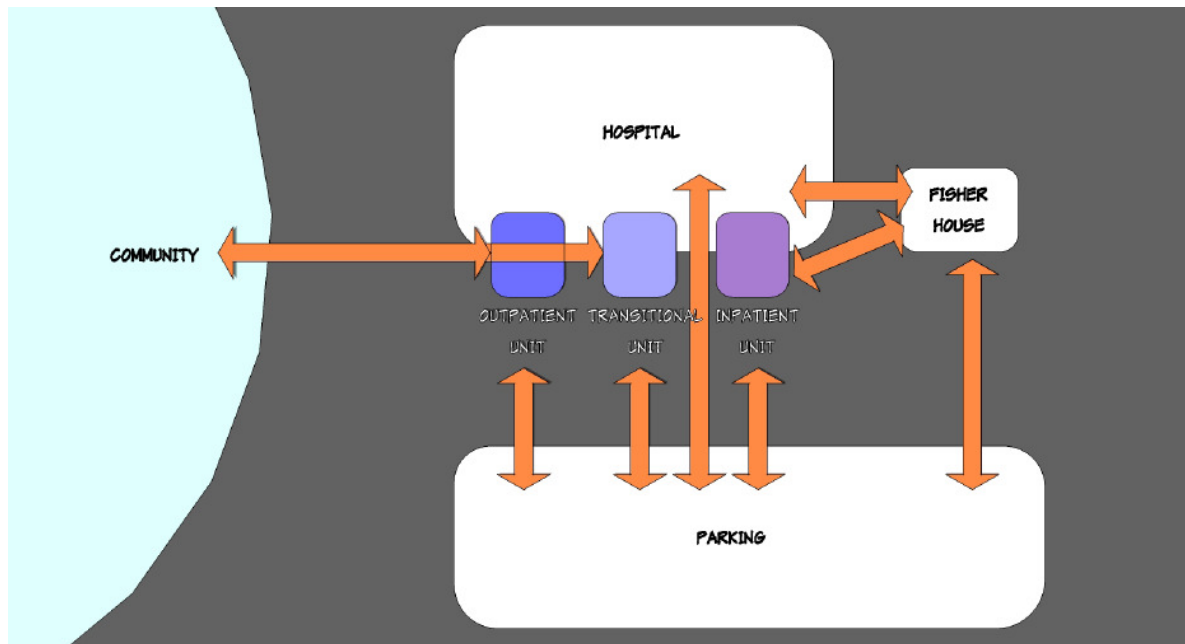
- A. Common use of resources
- B. Accessibility of supplies
- C. Urgency of contact
- D. Noise or vibration
- E. Presence of odors or fumes
- F. Contamination hazard
- G. Sequence of work
- H. Patient's convenience
- I. Frequent contact
- J. Need for security
- K. Others (specify)
- L. Closeness inappropriate

Reasons:

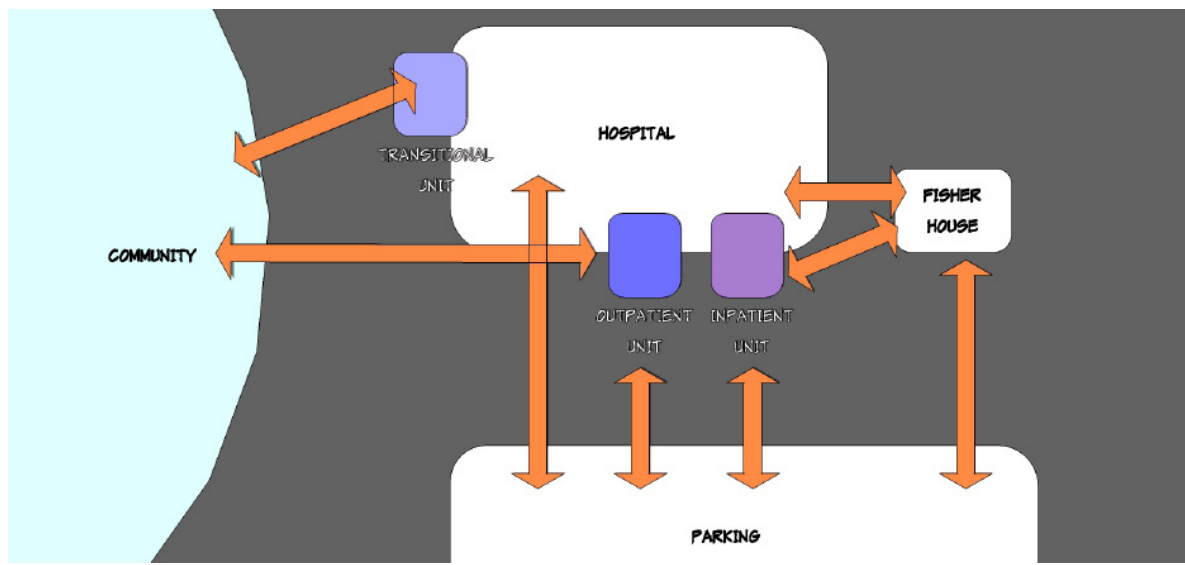
(Use as many as appropriate)

A. Macro Options for Polytrauma Rehabilitation Center components on a typical VA campus:

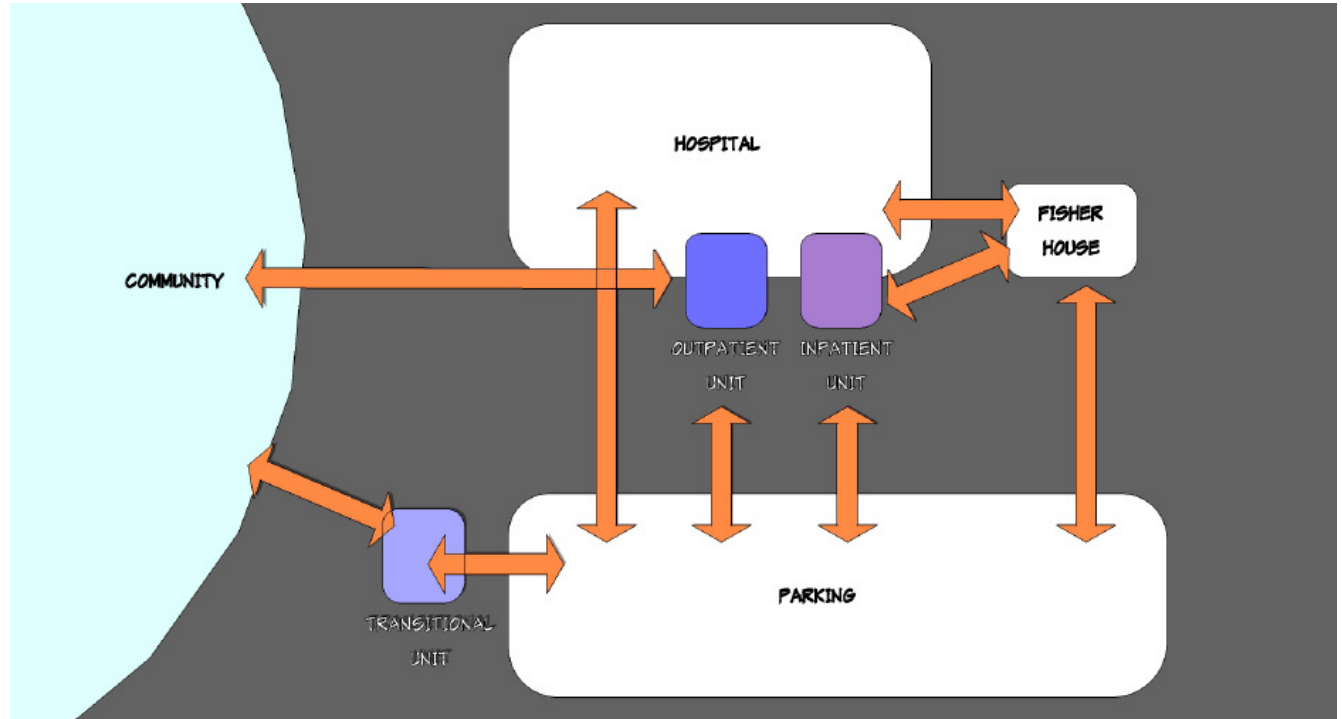
1. Inpatient, Transitional, and Outpatient Units within the main hospital/medical center proper, adjacent to each other.



2. Inpatient and Outpatient Units within the hospital/medical center proper, with Transitional Unit separated by physical distance within the proper.

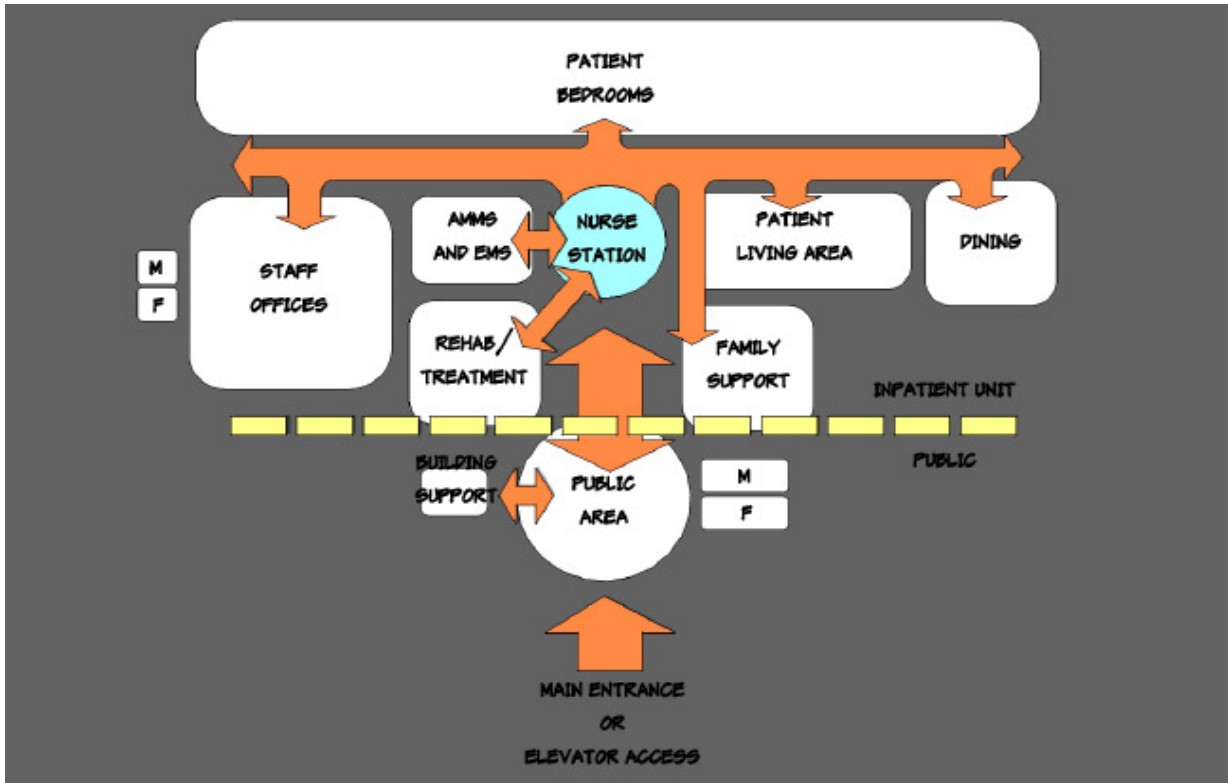


3. Inpatient and Outpatient Units within the hospital/medical center proper, with Transitional Unit separated by greater physical distance on the campus grounds.

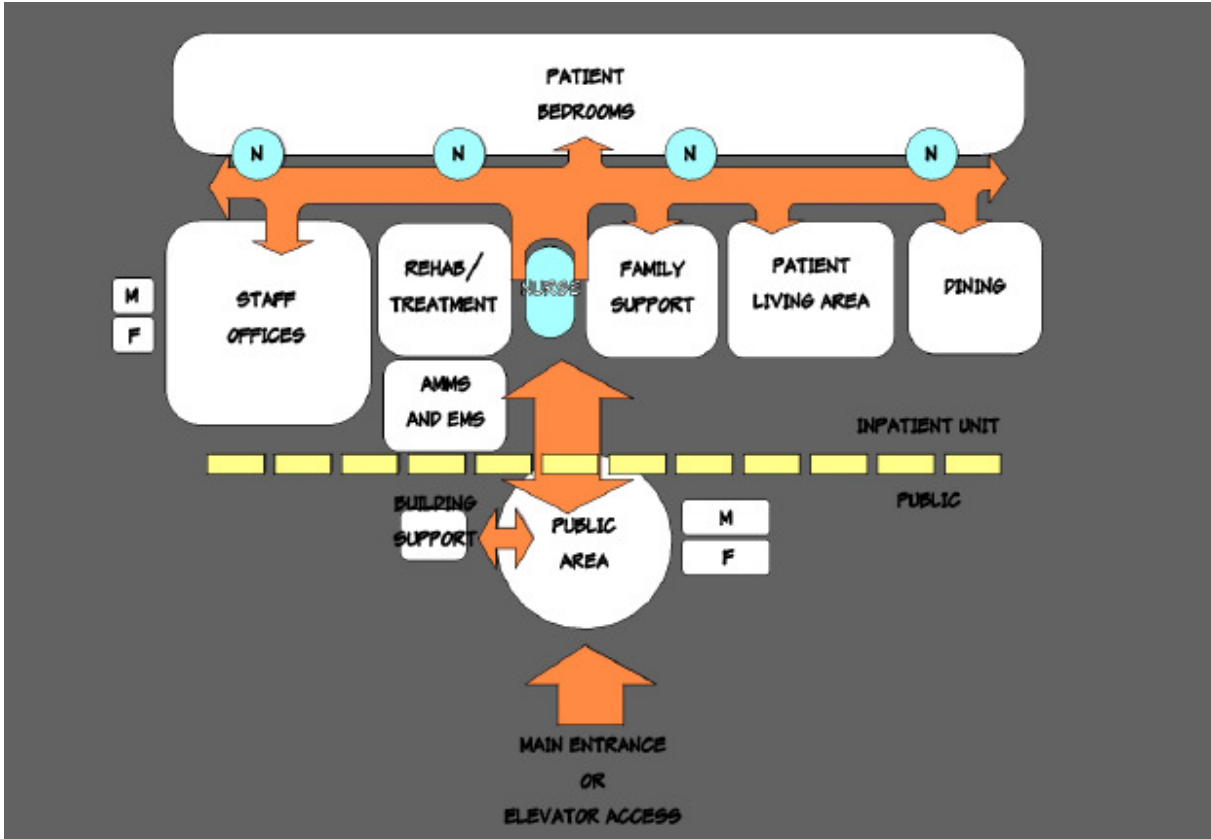


B. Inpatient Polytrauma Rehabilitation Unit Flow Diagrams

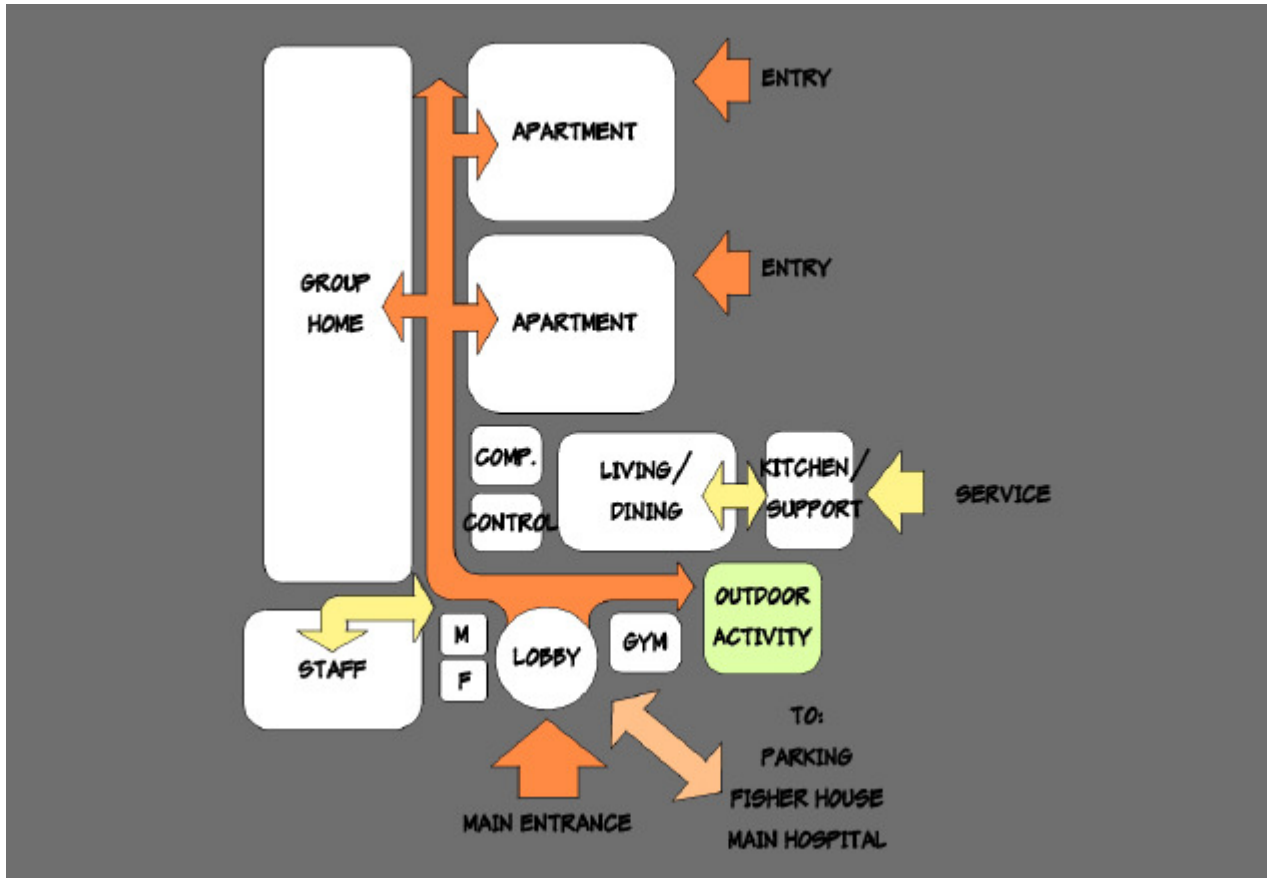
1. Inpatient flow with Centralized Nursing Station function.



2. Inpatient flow with Decentralized Nursing Station function.



C. Transitional Unit flow diagram.



D. Outpatient Unit flow diagram

