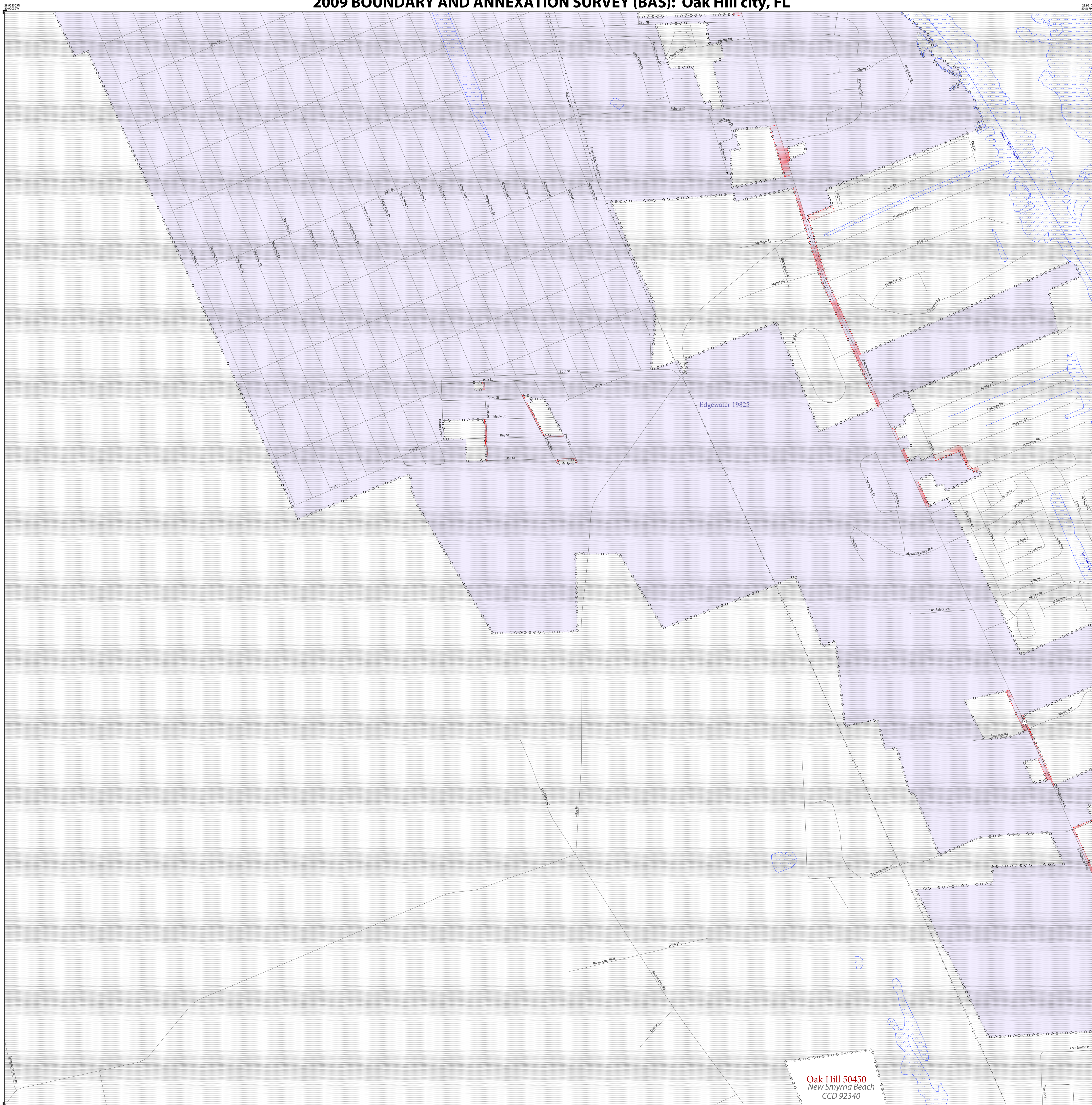


# 2009 BOUNDARY AND ANNEXATION SURVEY (BAS): Oak Hill city, FL



2009 BAS MAP LEGEND		
SYMBOL DESCRIPTION	SYMBOL	LABEL STYLE
Federal American Indian Reservation	*****	L'ANSE RESERVATION (TA 1880)
Off-Reservation Trust Land	+ + + + +	T1880
American Indian Tribal Subdivision	o o o o o	SHONTO (620)
Alaska Native Regional Corporation	▼ ▼ ▼ ▼ ▼	NANA ANRC 52120
American Indian Area (Hill)	o o o o o	
State (or statistically equivalent entity)	▨ ▨ ▨ ▨ ▨	NEW YORK 36
County (or statistically equivalent entity)	▣ ▣ ▣ ▣ ▣	ERIE 029
Minor Civil Division (MCD) <sup>1</sup>	o o o o o	Lee town 41460
Census County Division (CCD) <sup>2</sup>	o o o o o	Jemez CCD 91650
Consolidated City	o o o o o	MILFORD 47500
Incorporated Place - Subject Area	o o o o o	Rome 63418
Incorporated Place - Other Area <sup>3</sup>	o o o o o	Davis 18100
Census Designated Place (CDP) <sup>2</sup>	o o o o o	Cochiti 16560

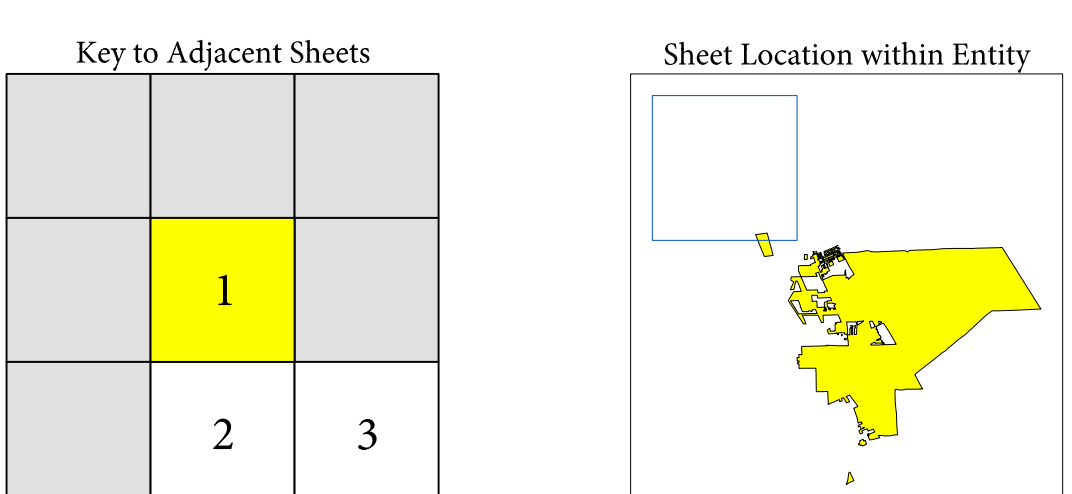
  

DESCRIPTION	SYMBOL	DESCRIPTION	SYMBOL
Interstate	— 2 —	Geographic Offset and Corridor	—
U.S. Highway	— 2 —	Water Body	—
State Highway	— 2 —	Swamp or Marsh	—
Other Road <sup>4</sup>	—	Glacier	—
Cul-de-sac	—	Airport	—
Circle	—	Cemetery	—
Address Range Break <sup>5</sup>	—	Golf Course	—
AWD Trail, Walkway, Stairway, or Ferry	—	Military	—
Railroad	—	National Park or Forest	—
Pipeline or Power Line	—	Other Park	—
Ridge or Fence	—	Mountain Peak	—
Property Line	—	Inset Area	—
Nonvisible Boundary or Feature Not Elsewhere Classified	—	Outside Subject Area	—
Perennial Stream	—		
Intermittent Stream	—		

Where state, county, and/or MCD/CCD boundaries coincide, the map shows the boundary symbol for only the highest-ranking of these boundaries. Where American Indian reservation and American Indian tribal subdivision boundaries coincide, the map shows only the American Indian reservation boundaries.

1 MCD<sup>1</sup> indicates a false MCD. These are for Census use only.  
 2 The CCD and CDP boundaries represent statistical entities only. They are not to be updated through the BAS.  
 3 Incorporated place name color correlates to the incorporated place fill color.  
 4 Due to space limitations, some road names, along with other feature and geographic names on the map, may not be shown.  
 5 Address range break values represent the last address stored in the MAF/TIGER database for each street that crosses the boundary of your jurisdiction.

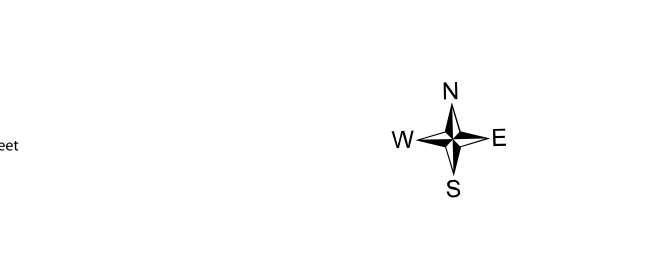
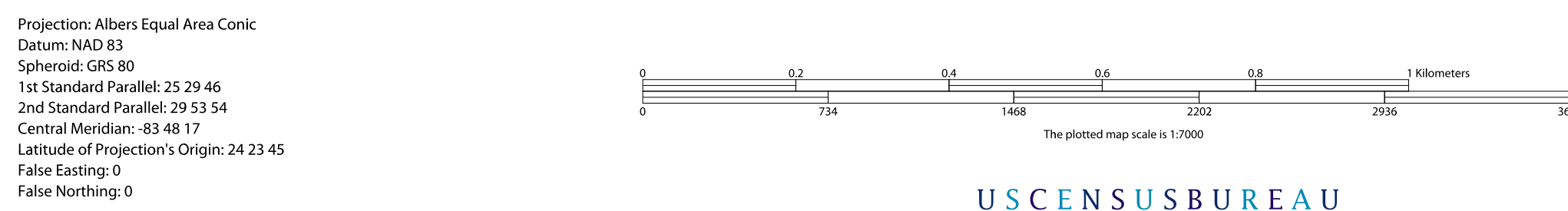
SIGNATURE BOX	
The corrected boundaries shown on the map are accurate as of January 1, 2009.	
Print Name	
Position	
Signature	
Telephone	Date



Sheet 1 of 5 PARENT sheets  
 Total Sheets: 6 (Index 1; Parent 5; Inset 0)

NAME: Oak Hill city (50450)  
 ENTITY TYPE: Incorporated Place  
 ST: Florida (12)  
 CO: Volusia County (127)

All legal boundaries and names reported through the 2008 BAS. The boundaries shown on this map are for Census Bureau statistical data collection and tabulation purposes only. Their depiction and designation for statistical purposes does not constitute a determination of jurisdictional authority or rights of ownership or entitlement.  
 Source: U.S. Census Bureau's MAF/TIGER database (BAS09EL2943)  
 Created by Geography Division: 25-OCT-08  
 U.S. DEPARTMENT OF COMMERCE Economics and Statistics Administration U.S. Census Bureau



The Census Bureau has completed nationwide spatial enhancements through the MAF/TIGER Accuracy Improvement Project (MTAIP). These enhancements may have inadvertently introduced changes to the shape of your boundary. Please review your maps carefully and make corrections where needed.  
 If data outside of your entity is not shown on this map, you may request map coverage by calling 1-800-972-3651 or emailing geo.basi@census.gov.

