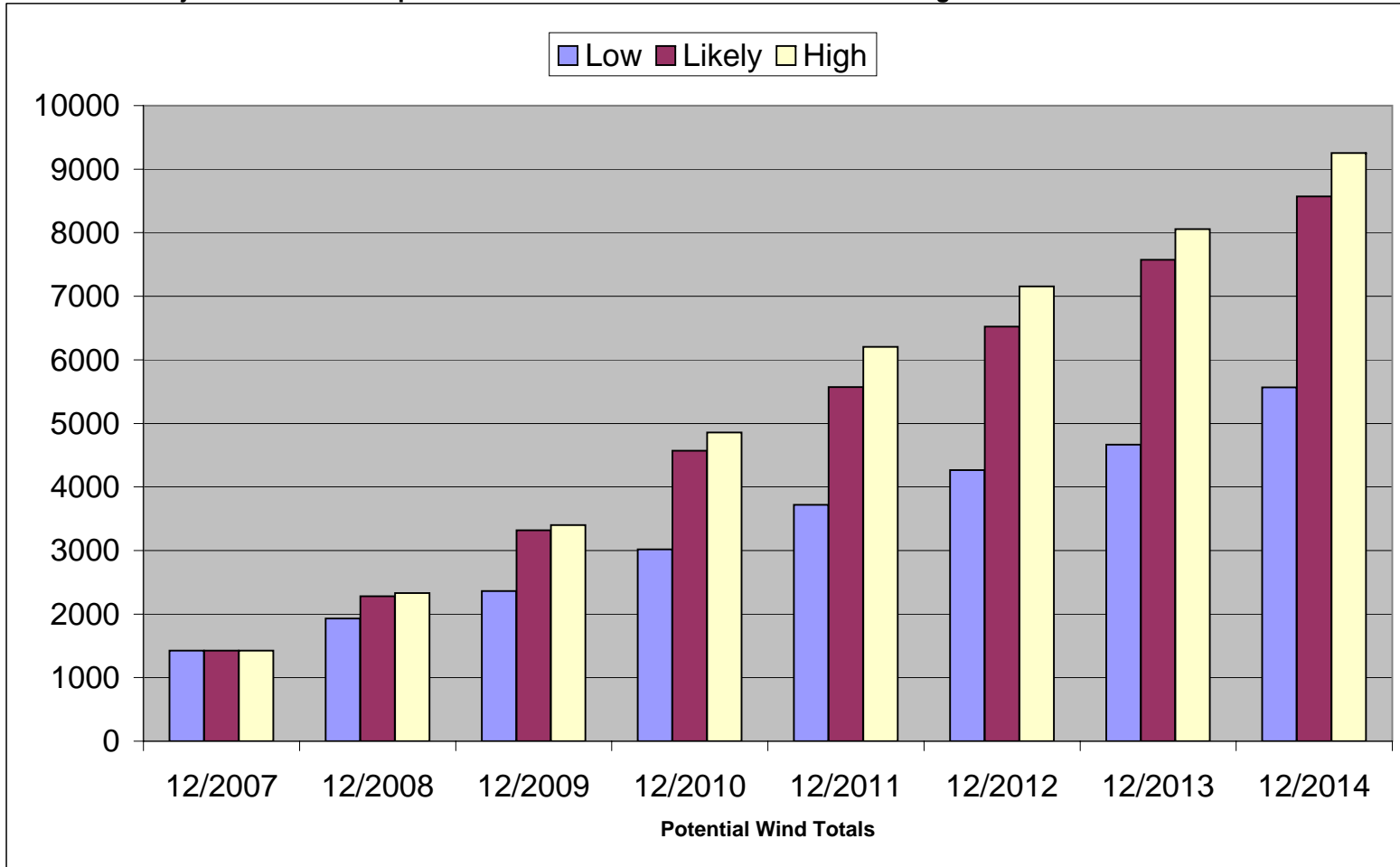


Projected Wind Development to Connect to BPA Grid based on Existing Queue and Recent Trends



NOTES: (as of 2/27/2008)

1. Projections beyond 2009 may be impacted or delayed due to a need for Transmission system expansion.
2. Projected totals assume continuation of present growth factors including Production Tax Credits and RPS Demand.
3. Total Wind Project interconnection requests in TS Queue: **15,716** Megawatts
4. Wind generation shown is interconnected to BPA-T; amount within BPA Balancing Authority Area is not estimated.