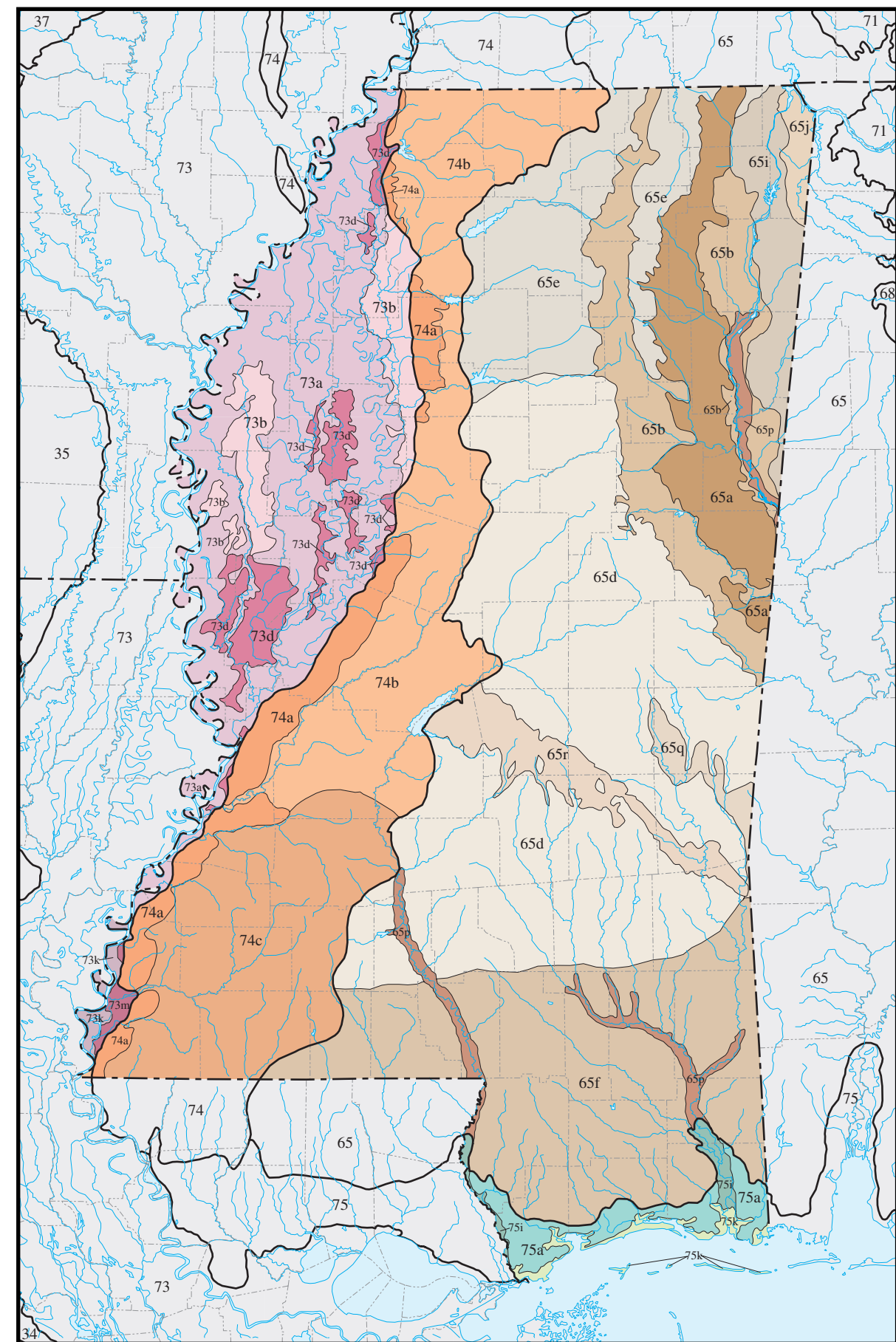


Summary Table: Characteristics of the Ecoregions of Mississippi

65. SOUTHEASTERN PLAINS												
Level IV Ecoregions	Area (square miles)	Physiography	Geology		Soils		Climate		Potential Natural Vegetation	Land Use and Land Cover		
			Elevation/Local Relief (feet)	Stratigraphic and Bedrock	Order (Great Group)	Common Soil Series	Temperature/Moisture Regimes	Precipitation (Mean annual (inches))			Frost Free (Mean annual (days))	Mean Temperature (July minimum (°F))
65a. Blackland Prairie	2108	Undulating irregular plains, nearly level to strongly sloping; low gradient streams with chalk, clay, sand, and silt substrates.	140-530 / 50-150	Quaternary to Tertiary dark gray to reddish clay solution residuum over Cretaceous-age chalk, marl, and calcareous clay.	Vertisols (Dystrudepts, Hapludals, Chromuders), Inceptisols (Eutrudepts, Epiaquepts, Hapludals), Alfisols (Paleudals, Hapludals), Entisols (Udorthents, Fluvaquents), Mollisols (Hapludols)	Vaiden, Okolona, Sumter, Okibbeha, Kipling, Brooksville, Denoposis, on floodplains Griffith, Leeper, Catauga, Marietta, Belden.	Thermic / Udic, some Aquic	55-59	200-230	31/52	Blackbelt oak-cedar forest with chinquapin oak, blackjack oak, post oak, eastern redcedar, sweetgum, and hackberry; patches of bluestem prairie with big and little bluestem, yellow Indiangrass, prairie rosewood, and prairie coneflower.	Pasture and cropland with hay, soybeans, corn, cotton, and pond-raised catfish production; small patches of mixed and deciduous forest.
65b. Flatwoods / Blackland Prairie Margins	2641	Smooth lowland plains and undulating irregular plains, some low hills; sluggish low gradient, clay and sand bottomed streams.	130-590 / 50-200	Quaternary to Tertiary massive clay decomposition residuum, medium to coarse sand decomposition residuum, some dark gray clay solution residuum; Tertiary (Pleistocene) clay and sand, Cretaceous sand, clay, chalk, and marl.	Alfisols (Paleudals, Endoaqualls, Hapludals), Vertisols (Dystrudepts, Dystraquepts), Inceptisols (Eptiaquepts), Ultisols (Fragiudals, Paleudals), Entisols (Fluvaquents)	Falkner, Adatton, Wilcox, Mayhew, Longview, Premis, Tzipah, Quitman; on floodplains Mathiston, Leeper, Urbo, Una.	Thermic / Udic, some Aquic	55-59	200-230	31/51	Mixed oak forest, oak-hickory-pine forest. On more acidic Flatwoods, post oak, blackjack oak, southern red oak, and shortleaf pine. On Blackland Prairie Margins, white oak, black oak, pignut and mockernut hickory, tulip poplar, white ash, and southern sugar maple. Some cypress-gum swamp and bottomland hardwoods.	Mixed forest, pine plantations, pasture, hay, and some cropland, cattle production.
65d. Southern Hilly Gulf Coastal Plain	10761	Dissected hills with rounded tops and gently sloping to strongly sloping side slopes; dissected irregular plains; some wide floodplains and broad, level to undulating terraces; low to moderate gradient mostly sandy bottomed streams.	150-660 / 100-300	Quaternary fine to coarse sand and sandy clay decomposition residuum; Tertiary (Eocene) sand, clay, and claystone; to the east, Cretaceous sand and sandy clay, glauconitic sand, clay and sandy limestone.	Ultisols (Hapludals, Paleudals, Fragiudals), Alfisols (Fragiudals), Entisols (Fluvaquents), Inceptisols (Endoaquents)	Smithdale, Sweetman, Providence, Ruston, Ora, Savannah, McLaurin, Heald; on floodplains Iuka, Bibb, Kinston, Mantachie.	Thermic / Udic, some Aquic	56-60	210-240	33/56	Oak-hickory-pine forest with post oak, blackjack oak, southern red oak, shortleaf pine, pignut and mockernut hickory; in the south, pine and pine-oak forest with longleaf and some shortleaf pine, blackjack oak, sand post oak, bluejack oak; southern floodplain forest with cypress-gum swamp, bottomland hardwoods, and some loblolly pine.	Mixed forest, pine plantations, intermixed areas of pasture, hayfields, and minor cropland; cattle and poultry production; bottomland forested wetlands, some public lands (Tombigbee, Bienville, and De Soto National Forests), oil and gas production in the south.
65e. Northern Hilly Gulf Coastal Plain	3244	Dissected hills with rounded tops and gently sloping to strongly sloping side slopes; dissected irregular plains; low to moderate gradient streams with sandy substrates.	210-750 / 200-400	Quaternary clayey fine sand, medium sand, and ferruginous sand decomposition residuum; Tertiary (Eocene) sand, clay, and claystone; to the east, Cretaceous sand and sandy clay, glauconitic sand, clay and sandy limestone.	Ultisols (Hapludals, Paleudals, Fragiudals), Alfisols (Fragiudals), Entisols (Fluvaquents), Inceptisols (Eptiaquepts, Hapludals)	Smithdale, Laverne, Ora, Savannah, Ruston, Premis, Providence, Lexington; on floodplains Bibb, Iuka, Urbo.	Thermic / Udic, some Aquic	56-59	200-210	29/50	Mixed oak and oak-pine forest. Mostly black oak, post oak, blackjack oak, southern red oak, northern red oak, pignut and mockernut hickory, some shortleaf pine; in more mesic areas, white oak, sweetgum, American holly, beech, and tulip poplar.	Mixed forest, pine plantations, deciduous forest, pasture, hayfields, minor cropland, some public land (Holly Springs National Forest).
65f. Southern Pine Plains and Hills	6126	Southward-sloping, dissected irregular plains, some low rolling hills, mostly broad gently sloping ridges; low to moderate gradient sand and clay bottomed streams.	20-510 / 100-250	Quaternary sandy clay decomposition residuum, alluvial gravel and sand; Tertiary (Miocene) sand, clay, and claystone; to the east, Cretaceous sand and clay.	Ultisols (Paleudals, Hapludals, Fragiudals, Paleaqualls), Entisols (Fluvaquents)	McLaurin, Heald, Bendable, Malbis, Ruston, Smithdale, Premis, Susquehanna, Frost; on floodplains Bibb, Smithton, Tebboc.	Thermic / Udic, some Aquic	60-68	230-250	37/60	Pine and pine-oak forest. Mostly longleaf pine, some slash pine to the south in wet areas, southern red oak, turkey oak, sand post oak, saw palmetto; some southern floodplain forest with cypress-gum swamp and bottomland hardwoods.	Pine plantations, pasture and some cropland of corn, soybeans, and cotton; poultry, cattle, and dairy production; turfgass and sod production, some public land (De Soto National Forest).
65i. Fall Line Hills	1069	Dissected irregular plains with rounded tops; gently sloping to strongly sloping side slopes; low to moderate gradient streams with sandy and gravelly substrates.	200-806 / 200-400	Quaternary medium to coarse sand and gravel decomposition residuum; Cretaceous quartz sand, gravelly sand, micaceous clay.	Ultisols (Hapludals, Fragiudals), Alfisols (Hapludals), Entisols (Fluvaquents), Inceptisols (Endoaquents)	Smithdale, Okecala, Brantley, Sweetman, Laverne, Savannah; on floodplains Mantachie, Iuka, Bibb.	Thermic / Udic, some Aquic	56-59	200-220	30/51	Mixed oak-pine forest, with white oak, southern red oak, black oak, post oak, sweetgum, hickories, and shortleaf pine.	Mixed forest, deciduous forest, and pine plantations, with areas of pasture, hay, and cropland.
65j. Transition Hills	251	Dissected hills with broad to rounded tops and steep side slopes; some irregular plains; low to moderate gradient streams with sandy and gravelly substrates.	415-650 / 100-225	Quaternary gravel and sand decomposition residuum, some chert-fragment solution residuum; Cretaceous fine-grained sand, chert gravel in silt and sand, some Mississippian and Devonian shale, sandstone, and limestone.	Ultisols (Hapludals, Fragiudals, Paleudals), Entisols (Fluvaquents), Inceptisols (Endoaquents, Dystrudepts)	Saffell, Smithdale, Laverne, Savannah, Ruston, Ora; on floodplains Mantachie, Kirkville, Jena, Bibb.	Thermic / Udic, some Aquic	56-59	200-210	28/47	Mixed oak-pine forest, with white oak, southern red oak, black oak, post oak, chestnut oak, sweetgum, hickories, shortleaf and some Virginia pine.	Mostly mixed and deciduous forest with some pine plantations, small areas of pasture and cropland in narrow valley bottoms and on gently sloping uplands.
65p. Southeastern Floodplains and Low Terraces	686	Major river floodplains and associated low terraces; low gradient streams with sandy and silty substrates, oxbow lakes, ponds, and swamps.	10-250 / 5-35	Quaternary alluvial gravel, sand, quartz gravel and sand, silts, and clays.	Ultisols (Hapludals, Albaqualls), Inceptisols (Dystrudepts, Endoaquents), Entisols (Fluvaquents, Udifluvents, Quartzipsamments), Alfisols (Glossaqualls)	On floodplains Bibb, Jena, Mantachie, Nugen, Kirkville, Rosebush; on low terraces Cahaba, Latonia, Leaf, Guyton, Bigbee, Columbus.	Thermic / Aquic, some Udic	57 north; 60-64 south	220-230 north; 230-250 south	32-36/54-58	Southern floodplain forest. Includes cypress-gum swamp (bald cypress, pond cypress, water tupelo, swamp tupelo) and bottomland hardwood forest (bottomland oaks, sweetgum, American elm, red maple, green ash, water hickory).	Mostly forested wetlands and deciduous forest, some pine plantations and cropland on terraces.
65q. Bustrone/Lime Hills	334	Strongly dissected hills and rolling low hills, cusca with northeast-facing steep slope; moderate or higher gradient streams with sand, gravel, cobble, and bedrock substrates.	250-660 / 200-400	Quaternary siliceous clay decomposition residuum, limonitic sandy decomposition residuum; Tertiary (Eocene) claystone, siltstone, clay, sandy clay, sandstone, limestone, and marl.	Ultisols (Hapludals), Entisols (Fluvaquents), Inceptisols (Dystrudepts, Endoaquents)	Arundel, Lauderdale, Sweetman, Smithdale, on floodplains Bibb, Jena, Kirkville, Mantachie.	Thermic / Udic	57-62	220-230	34/57	Mixed oak-pine forest, with white oak, southern red oak, sweetgum, hickories, shortleaf and some longleaf pine.	Mixed and deciduous forest, pine plantations.
65r. Jackson Prairie	955	Undulating irregular plains, nearly level to strongly sloping; low gradient streams with chalk, clay, sand, and silt substrates.	210-650 / 50-200	Quaternary and Tertiary smectitic clay decomposition residuum; Tertiary (Eocene) clay, calcareous clay, sand, marl, and shells.	Vertisols (Dystrudepts, Hapluders), Alfisols (Paleudals, Hapludals), Mollisols (Hapludols), Inceptisols (Eptiaquepts, Eutrudepts)	Vaiden, Okolona, Louin, Boswell, Kipling, Ichusa, Frost, Maytag, Okecala, Brantley; on floodplains Catauga, Griffith, Leeper, Urbo, Marietta.	Thermic / Udic	55-59	210-230	34/57	Oak-hickory-pine forest with post oak, water oak, white oak, southern red oak, mockernut hickory, sweetgum, some shortleaf, longleaf, or loblolly pine; scattered prairies of little bluestem, yellow Indiangrass, prairie clover, and prairie coneflower.	Pasture, pine plantations, mixed forest, cattle production, and cropland (Bienville National Forest).



SOURCES:

Anderson, J.R., 1970, Major land uses, in The national atlas of the United States of America: Washington, D.C., U.S. Geological Survey, p. 158-159, scale 1:7,500,000.

Bailey, R.G., 1995, Description of the ecoregions of the United States (2d ed): Miscellaneous Publication No. 1391, U.S. Department of Agriculture, Forest Service, 108 p., 4 map.

Bailey, R.G., Avers, P.E., King, T., and McNab, W.H., eds., 1994, Ecoregions and subregions of the United States (map) (supplementary table of map unit descriptions compiled and edited by McNab, W.H., and Bailey, R.G.): Washington, D.C., U.S. Department of Agriculture, Forest Service, scale 1:7,500,000.

Barnes, C.C., and Marschner, F.J., 1933, Natural land-use areas of the United States: U.S. Department of Agriculture, scale 1:4,000,000.

Bayer, K.C., 1983, Generalized structural lithologic and physiographic provinces in the fold and thrust belts of the United States: U.S. Geological Survey, scale 1:2,500,000.

Braun, E.L., 1950, Deciduous forests of eastern North America: New York, Hafner Publishing Company, 596 p.

Brewer, J.S., 2001, Current and presettlement tree species composition of some upland forests in northern Mississippi: Journal of the Torrey Botanical Society, v. 128, no. 4, p. 332-349.

Bryant, W.S., McComb, W.C., and Fralish, J.S., 1993, Oak-hickory forests (western mesophytic/oak-hickory forests), in Martin, W.H., Boyce, S.G., and Echternacht, A.C., eds., Biodiversity of the southeastern United States: upland terrestrial communities: New York, John Wiley and Sons, p. 143-201.

Caplenor, D., 1968, Forest composition on loessal and non-loessal soils in west-central Mississippi: Ecology, v. 49, no. 2, p. 322-331.

Christensen, N.L., 1988, Vegetation of the southeastern Coastal Plain, in Barbour, M.G., and Billings, W.D., eds., North American terrestrial vegetation: Cambridge, U.K., Cambridge University Press, p. 317-363.

Copeland, C.W., Jr., Rheams, K.F., Neathery, T.L., Gilliland, W.A., Schmidt, W., Clark, W.C., Jr., and Pope, D.E., 1988, Quaternary geologic map of the Mobile 4° x 6° quadrangle, United States: U.S. Geological Survey, Map I-1420 (NH-16), scale 1:1,000,000.

Cowdry, A.E., 1996, This land, this South: an environmental history: Lexington, Ky., University Press of Kentucky, 240 p.

Cross, R.D., Wales, R.W., and Traylor, C.T., 1974, Atlas of Mississippi: Jackson, Miss., University Press of Mississippi, 187 p.

Delcourt, H.R., and Delcourt, P.A., 1975, The bluffslands-Pleistocene pathway into the Tunica Hills: American Midland Naturalist, v. 94, no. 2, p. 385-400.

Devall, M., 2000, What the Delta looked like before European settlers came: Delta Wildlife, Spring 2000, p. 8-9.

Eleuterius, L.N., 1972, The marshes of Mississippi: Castanea, v. 37, p. 153-168.

Federal Writer's Project, Works Progress Administration, 1938, Mississippi, a guide to the magnolia state: New York, Viking Press, 345 p.

Fenneman, N.M., 1938, Physiography of eastern United States: New York, McGraw-Hill, 714 p.

Frost, C.C., 1993, Four centuries of changing landscape patterns in the longleaf pine ecosystem, in Hermann, S.M., ed., 18th Tall Timbers Fire Ecology Conference, the longleaf pine ecosystem: ecology, restoration and management, Tallahassee, Fla., 1991, Proceedings, Tall Timbers Research Station, p. 17-43.

Frost, C.C., 1995, Presettlement fire regimes in southeastern marshes, peatlands, and swamps, in Gerdun, S.J., and Engstrom, R.T., eds., 19th Tall Timbers Fire Ecology Conference, fire in wetlands: a management perspective, Tallahassee, Fla., 1995, Proceedings, Tall Timbers Research Station, p. 39-60.

Griffith, G.E., Omerik, J.M., and Azevedo, S.H., 1997, Ecoregions of Tennessee: Corvallis, Ore., U.S. Environmental Protection Agency, National Health and Environmental Effects Research Laboratory, EPA/600/R-97/022, 51 p.

Griffith, G.E., Omerik, J.M., Comstock, J.A., Lawrence, S., Martin, G., Goddard, A., Hulcher, V.J., and Foster, T., 2002, Ecoregions of Alabama and Georgia (color poster with map, descriptive text, summary tables, and photographs): Reston, Va., U.S. Geological Survey, scale 1:7,000,000.

Hackney, C.T., Adams, S.M., and Martin, W.H., eds., 1992, Biodiversity of the southeastern United States: aquatic communities: New York, John Wiley & Sons, 779 p.

Hamel, P.B., and Foti, T.L., eds., 2001, Bottomland hardwoods of the Mississippi Alluvial Valley, characteristics and management of natural function, structure, and composition: Asheville, N.C., U.S. Department of Agriculture, Forest Service, General Technical Report SRS-42, 109 p.

Hamel, P., LeGrand, H., Lemrutz, M., and Gautreaux, S., Jr., 1982, Bio-habitat relationships on southeastern forest lands: U.S. Forest Service General Technical Report SE-22, 417 p.

Hammond, E.H., 1970, Classes of land-surface form, in The national atlas of the United States of America: Washington, D.C., U.S. Geological Survey, p. 62-63, scale 1:7,500,000.

Harper, R.M., 1913, A botanical cross-section of northern Mississippi: Bulletin of the Torrey Botanical Club, v. 40, p. 377-399.

Harper, R.M., 1914, A superficial study of the pine-barren vegetation of Mississippi: Bulletin of the Torrey Botanical Club, v. 41, p. 551-567.

Hilgard, E.W., 1860, Report on the geology and agriculture of the State of Mississippi: Jackson, Miss., Barksdale Press, 391 p.

Hodgkins, E.J., Cannon, T.K., and Miller, W.F., 1976, Forest habitat regions from satellite imagery: states of Alabama and Mississippi: A supplement to Southern Cooperative Series Bulletin 210, Forest Habitat Regions and Types on a Photomorpho-Physiographic Basis: States of Alabama and Mississippi, scale 1:1,000,000.

Hunt, C.B., 1974, Natural regions of the United States and Canada: San Francisco, W.H. Freeman, 725 p.

Jenkins, N.J., and Krause, R.A., 1986, The Tombigbee watershed in southeastern prehistory: University, Ala., University of Alabama Press, 156 p.

Johnson, R.L., and Little, E.L., Jr., 1967, Trees, shrubs, and woody vines of the Bluff Experimental Forest, Warren County, Mississippi: U.S. Department of Agriculture, Forest Service, Southern Forest Experiment Station, Research Paper SO-25, 16 p.

Kelley, A., 1978, Sequent occupancy of the Yazoo basin, Mississippi, 1830 to 1976: Mississippi Geographer, v. 6, p. 3-18.

Kelley, A., and Spillman, R.C., 1976, Sequent occupancy of the Piney Woods in southeastern Mississippi, 1805 to 1976: Mississippi Geographer, v. 4, p. 25-42.

Keys, J., Jr., Carpenter, C., Hooks, S., Koenig, F., McNab, W.H., Russell, W.E., Smith, M.L., 1995, Ecological units of the eastern United States - first approximation: Atlanta, U.S. Department of Agriculture, Forest Service, Technical Publication R8-TP21, scale 1:3,500,000.

King, P.B., and Beikman, H.M., 1974, Geologic map of the United States: U.S. Geological Survey, scale 1:2,500,000.

Kitchler, A.W., 1964, Potential natural vegetation of the conterminous United States: New York, American Geographical Society, Special Publication no. 36, 116 p., scale 1:3,168,000.

Loewen, J.W., and Sallis, C., eds., 1980, Mississippi, conflict and change: New York, Pantheon Books, 384 p.

Loveland, T.R., Merchant, W.J., Brown, J.F., Ohlen, O.D., Reed, B.C., Olson, P., and Hutchinson, J., 1995, Seasonal land-cover regions of the United States: Annals of the Association of American Geographers, v. 85, no. 2, p. 339-355.

Low, E.N., 1921, Plants of Mississippi, a list of flowering plants and ferns: Mississippi Geological, Economic, and Topographical Survey, Bulletin 17, p. 1-293.

Martin, W.H., Boyce, S.G., and Echternacht, A.C., eds., 1993a, Biodiversity of the southeastern United States: lowland terrestrial communities: New York, John Wiley and Sons, 502 p.

Martin, W.H., Boyce, S.G., and Echternacht, A.C., eds., 1993b, Biodiversity of the southeastern United States: upland terrestrial communities: New York, John Wiley and Sons, 373 p.

McNab, W.H., and Avers, P.E., comps., 1994, Ecological subregions of the United States: section descriptions: Washington, D.C., U.S. Department of Agriculture, Forest Service Administrative Publication WO-WSA-5, 267 p.

Miller, R.A., Maber, S.W., Copeland, C.W., Jr., Rheams, K.F., LeNeahery, T., Gilliland, W.A., Fildler, M.S., Van Nostrand, A.C., Wheeler, W.H., Hofbrook, D.F., and Bush, W.W., 1988, Quaternary geologic map of the Lookout Mountain 4° x 6° quadrangle, United States: U.S. Geological Survey, Map I-1420 (NH-16), scale 1:1,000,000.

Mississippi Bureau of Geology and Mississippi Mineral Resources Institute, 1983, Economic minerals map of Mississippi: Jackson, Miss., Mercury Maps, Inc., scale 1:500,000.

Mississippi Geological Survey, 1969 (reprinted 1985), Geologic map of Mississippi: Jackson, Miss., Mercury Maps, Inc., scale 1:500,000.

Mississippi Geological Survey, 1975, Relief map: Jackson, Miss., Mercury Maps, Inc., scale 1:1,000,000.

Mississippi Natural Heritage Program, 2000, Ecological communities of Mississippi: Jackson, Miss., Mississippi Museum of Natural Science, www.mdnfp.com/museum/html/heritage/communities/WEB_LIST.htm.

Monk, C.D., Inm, D.W., and Potter, R.L., 1990, Oak forests of eastern North America: Castanea, v. 55, no. 2, p. 77-96.

Moran, L.P., Petry, D.E., Switzer, R.E., McDaniel, S.T., and Wieland, R.G., Soils of native prairie remnants in the Jackson Prairie region of Mississippi: Office of Agricultural Communications, Division of Agriculture, Forestry, and Veterinary Medicine, Mississippi State University, http://msarc.com/pub/bulletin/067.htm.

Napier, J.B., 1985, Lower Pearl River's Piney Woods, its land and people: Oxford, Miss., Center for the Study of Southern Culture, University of Mississippi, 227 p.

Peet, R.K., and Allard, J.J., 1993, Longleaf pine vegetation of the Southern Atlantic and Eastern Gulf Coast regions: a preliminary classification, in Hermann, S.M., ed., 18th Tall Timbers Fire Ecology Conference, the longleaf pine ecosystem: ecology, restoration and management, Tallahassee, Fla., 1991, Proceedings, Tall Timbers Research Station, p. 45-81.

Pike, R.W., Waller, E.N., and Henderson, P.T., 1969, Mississippi in Maps, 1969: University, Miss., University of Mississippi, Bureau of Business and Economic Research, 78 p.

Quarterman, E., and Keever, C., 1962, Southern mixed hardwood forest: climax in the southeastern coastal plain, U.S. Ecological Monographs, v. 32, p. 167-185.

Ross, S.T., 2001, Inland fishes of Mississippi: Jackson, Miss., University Press of Mississippi, 736 p.

Ross, S.T., O'Connell, M.T., Patrick, D.M., Latorre, C.A., Slack, W.T., Knight, J.G., and Wilkins, S.D., 2001, Stream erosion and densities of *Etheostoma rubrum* (Percidae) and associated riffle-inhabiting fishes-erosion stability in a variable habitat: Copeia, v. 2001, no. 4, p. 916-927.

Rostland, E., 1957, The myth of a natural prairie belt in Alabama: an interpretation of historical records: Annals of the Association of American Geographers, v. 47, no. 4, p. 392-411.

Sanders, R., 1974, The climate of Mississippi, in U.S. Department of Commerce, National Oceanic and Atmospheric Administration, Climates of the States, v. 1: Port Washington, N.Y., Water Information Center, Inc., p. 215-228.

Saucier, R., 1994, Geomorphology and quaternary geologic history of the Lower Mississippi Valley, v. 1 (report), v. 2 (map folio): Vicksburg, Miss., U.S. Army Engineer Waterways Experiment Station.

Sharitz, R.R., and Mitsch, W.J., 1993, Southern floodplain forests, in Martin, W.H., Boyce, S.G., and Echternacht, A.C., eds., Biodiversity of the southeastern United States: lowland terrestrial communities: New York, John Wiley and Sons, p. 311-372.

Stanturf, J.A., Gardner, E.S., Hamel, P.B., Deval, M.S., Lettinger, T.D., and Warren, M.E., 2000, Restoring bottomland hardwood ecosystems in the lower Mississippi alluvial valley: Journal of Forestry, v. 98, no. 8, p. 10-16.

Southern Regional Climate Center, 2002, Climatological normals for Mississippi, 1971-2000: U.S. Department of Commerce, National Oceanic and Atmospheric Administration, National Weather Service.

Timme, S.L., 1989, Wildflowers of Mississippi: Jackson, Miss., University Press of Mississippi, 278 p.

Tweed, D.J., and Loesch, C.R., 1999, Forest area and distribution in the Mississippi alluvial valley, implications for breeding bird conservation: Journal of Biogeography, v. 26, p. 1215-1224.

U.S. Department of Agriculture, Forest Service, 1969, A forest atlas of the South: New Orleans, Southern Forest Experiment Station, and Asheville, N.C., Southeastern Forest Experiment Station, 27 p.

U.S. Department of Agriculture, Forest Service, 1997, Forest type groups of the United States, scale 1:7,500,000, in Powell, D.S., Faulkner, J.L., Dar, D.R., Zhu, Z., and MacCleery, D.W., Forest resources of the United States: Fort Collins, Colorado, U.S. Department of Agriculture, Forest Service, Rocky Mountain Forest and Range Experiment Station, General Technical Report RM-234, 132 p.

U.S. Department of Agriculture, National Agricultural Statistics Service, 1999, Census of agriculture, 1997, v. 2, subject series, part 1, agricultural atlas of the United States: Washington, D.C., U.S. Government Printing Office, 163 p.

U.S. Department of Agriculture, Natural Resources Conservation Service (formerly Soil Conservation Service), Various county soil surveys of Mississippi.

U.S. Department of Agriculture, Soil Conservation Service, 1981, Land resource regions and major land resource areas of the United States: Washington, D.C., U.S. Government Printing Office, Agriculture Handbook 296, 156 p., 4 map.

U.S. Department of Agriculture-Soil Conservation Service and Mississippi Agricultural and Forestry Experiment Station, 1974, General soil map, State of Mississippi: Mississippi State Department of Agriculture and Commerce, 2 sheets, scale 1:750,000.

U.S. Department of Commerce, Bureau of the Census, 1995, Census of agriculture, 1992, v. 2, subject series, part 1, agricultural atlas of the United States: Washington, D.C., U.S. Government Printing Office, 204 p.

U.S. Department of Commerce, Bureau of the Census, 1995, Census of agriculture, 1992, v. 2, subject series, part 1, agricultural atlas of the United States: Washington, D.C., U.S. Government Printing Office, 204 p.

U.S. Geological Survey, 1986, Land use and land cover data from 1:250,000- and 1:100,000-scale maps: Reston, Va., U.S. Geological Survey Data Users Guide no. 4.

Waggoner, G.S., 1975, Southeastern evergreen and oak-pine region: inventory of natural areas and sites recommended as potential natural landmarks: Washington, D.C., U.S. National Park Service, 206 p.

Ware, S., Frost, C., and Doerr, P.D., 1993, Southern mixed hardwood forest: the former longleaf pine forest, in Martin, W.H., Boyce, S.G., and Echternacht, A.C., eds., Biodiversity of the southeastern United States: lowland terrestrial communities: New York, John Wiley and Sons, p. 447-493.

White, P.S., Wilds, S.P., and Thunhorst, G.A., 1999, Southeast: in Mac, M.J., Opler, P.A., Puckett Haacker, C.E., and Doran, P.D., eds., Status and trends of the nation's biological resources: Reston, Va., U.S. Geological Survey, p. 255-314.

Whitehead, D.R., and Sheehan, M.C., 1985, Holocene vegetation changes in the Tombigbee River Valley, eastern Mississippi: American Midland Naturalist, v. 113, no. 1, p. 122-137.

Wieland, R.G., 2000, Ecology and vegetation of LeFleur's Bluff State Park, Jackson, Mississippi: Journal of the Mississippi Academy of Sciences, v. 45, no. 1, p. 150-185.

Wieland, R.G., Gordon, K.L., Wiseman, J.B., and Elen, D.S., 1991, Agency inventory and restore prairie openings in Bienville National Forest (Mississippi): Restoration and Management Notes, v. 9, no. 2, p. 105-106.

Wolfe, J.L., and Lohfencefer, R., 1983, The small mammal fauna of a longleaf-slash pine forest in southern Mississippi: Journal of the Mississippi Academy of Sciences, v. 28, no. 5, p. 37-47.