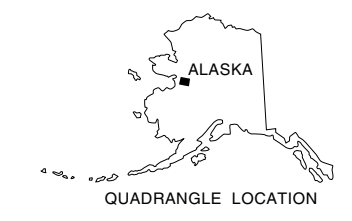
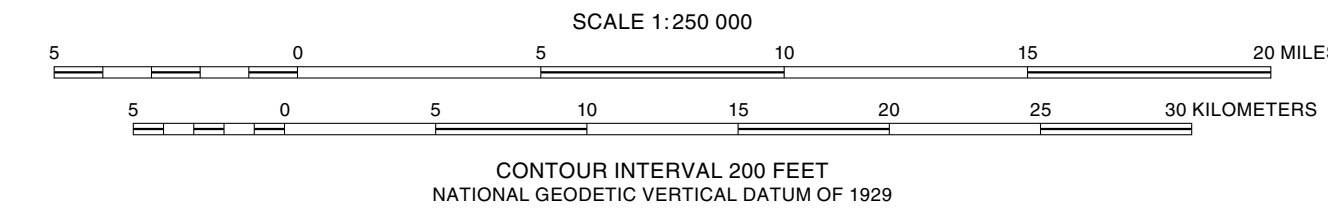
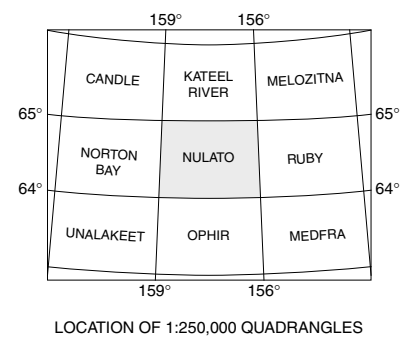


Base from U.S. Geological Survey, 1962 Universal Transverse Mercator projection



Geology mapped by W.W. Patton, Jr., 1954, 1956, 1958, 1960, 1974, 1975, 1979, 1981, 1982, 1985; E.J. Moll-Stalcup, 1979, 1981; R.S. Bickel, 1954-1956; J.M. Hoare, 1958; Bond Taber, 1958; A.R. Tagg, 1960; R.M. Chapman, 1974, 1975; Christine Carlson, R.A. Loney, and G.R. Himmelberg, 1982; S.E. Box, 1985. Field mapping in south-central part of quadrangle supplemented by field data from Anaconda Minerals Company, 1981-1985.

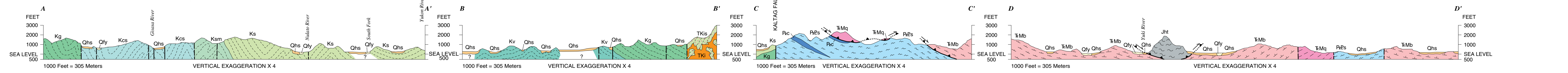
Edited by Jane S. Ciener; cartography by Darlene A. Casabier and Hugh F. Thomas

Manuscript approved for publication December 22, 1998

Map of the Nulato quadrangle showing location of field observation points (dots) and continuous foot traverses (lines). Geology extended between field stations by aerial reconnaissance and by interpretation of aerial photographs. Surficial deposits mapped almost entirely from aerial photographs.

Supplementary data used in geologic map compilation:

- unpublished field maps, North Pacific Mining Corporation, 1993
- Loney and Himmelberg, 1984



## GEOLOGIC MAP OF THE NULATO QUADRANGLE, WEST-CENTRAL ALASKA

By  
**W.W. Patton, Jr. and E.J. Moll-Stalcup**  
2000



Any use of trade, product, or firm names in this publication is for descriptive purposes only and does not imply endorsement by the U.S. Government.  
For sale by U.S. Geological Survey, Information Services, Box 25286, Federal Center, CO 80225, 1-800-ASK-USGS  
Available on World Wide Web at <http://pubs.usgs.gov/map/2677/>