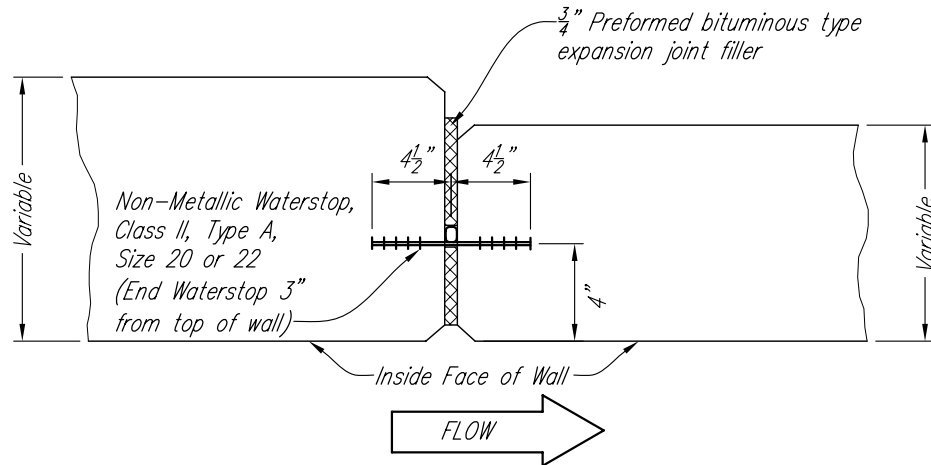
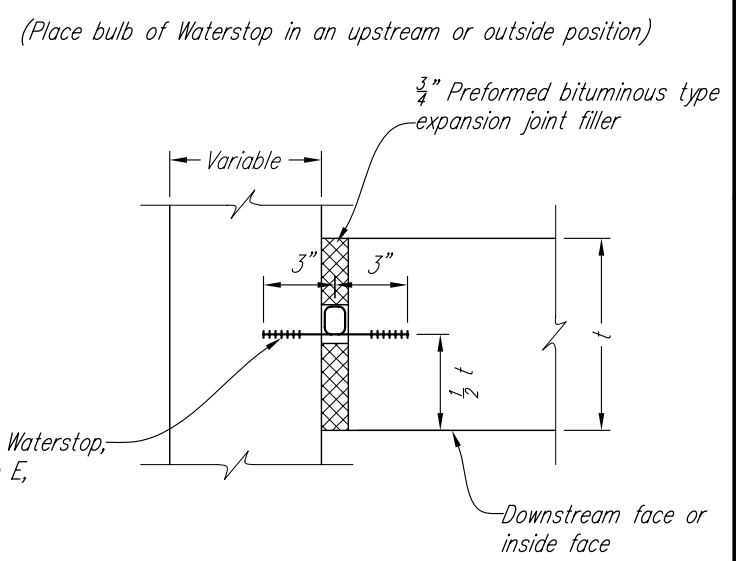


Place two layers 55 lbs. per 100 sq.ft. (Approx. weight), smooth surface, asphalt treated roofing felt between the bottom of the upstream section and the top of the expansion joint.

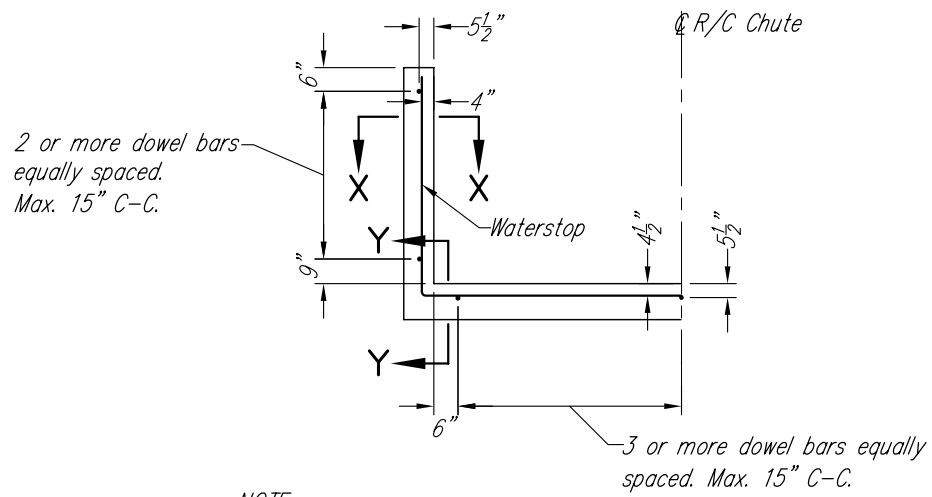
**DOWEL BAR EXPANSION JOINT**  
Not to Scale



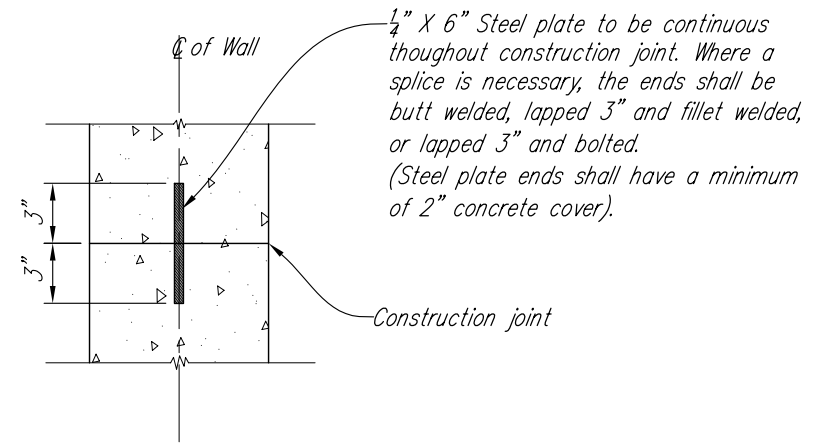
**TYPICAL PLACEMENT OF WATERSTOP IN DOWEL BAR EXPANSION JOINT**  
Not to Scale



**TYPICAL PLACEMENT OF WATERSTOP IN VERTICAL CONSTRUCTION JOINT**  
Not to Scale

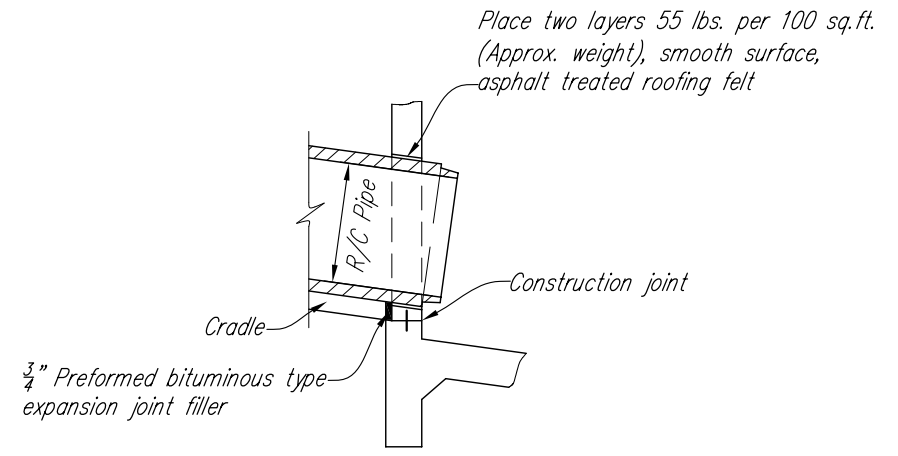


**NOTE:**  
The dowel bars shall be placed parallel with the centerline of the chute and shall be placed on the same slope as the floor of the chute section.  
Dowel bars shall be 3/4" diam. smooth steel bars coated on sliding end to prevent bond with concrete. Coating shall be one layer of asphalt or asphalt impregnated paper. End waterstop 3" from top of wall.

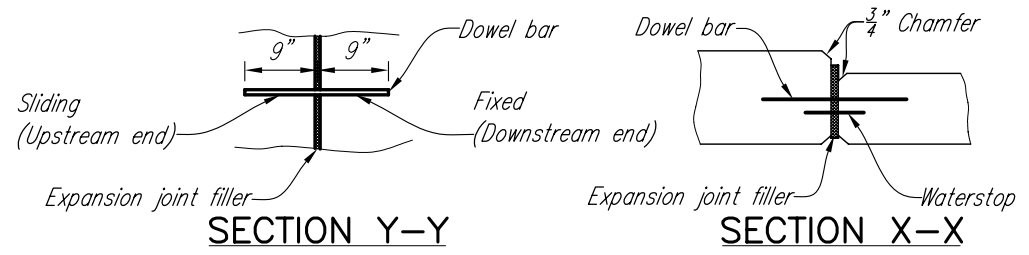


**NOTE:**  
Steel plate shall be free from dirt, oil, grease, paint, mill scale, loose or thick rust, or other coating which might destroy or reduce its bond with concrete.  
Steel plate and installation to be included with unit price for concrete.

**DETAIL OF SHEAR PLATE TYPE CONSTRUCTION JOINT**  
Not to Scale



**AUXILIARY VIEW PIPE THROUGH WALL**  
Not to Scale



**DOWEL BAR LAYOUT FOR DOWEL BAR EXPANSION JOINT**  
Not to Scale

Date	6/2005
Designed	STANDARD
Drawn	
Checked	
Approved	Mark J. Jensen

**STANDARD DETAILS**



File No.	279v.dwg
Drawing No.	
Sheet	of