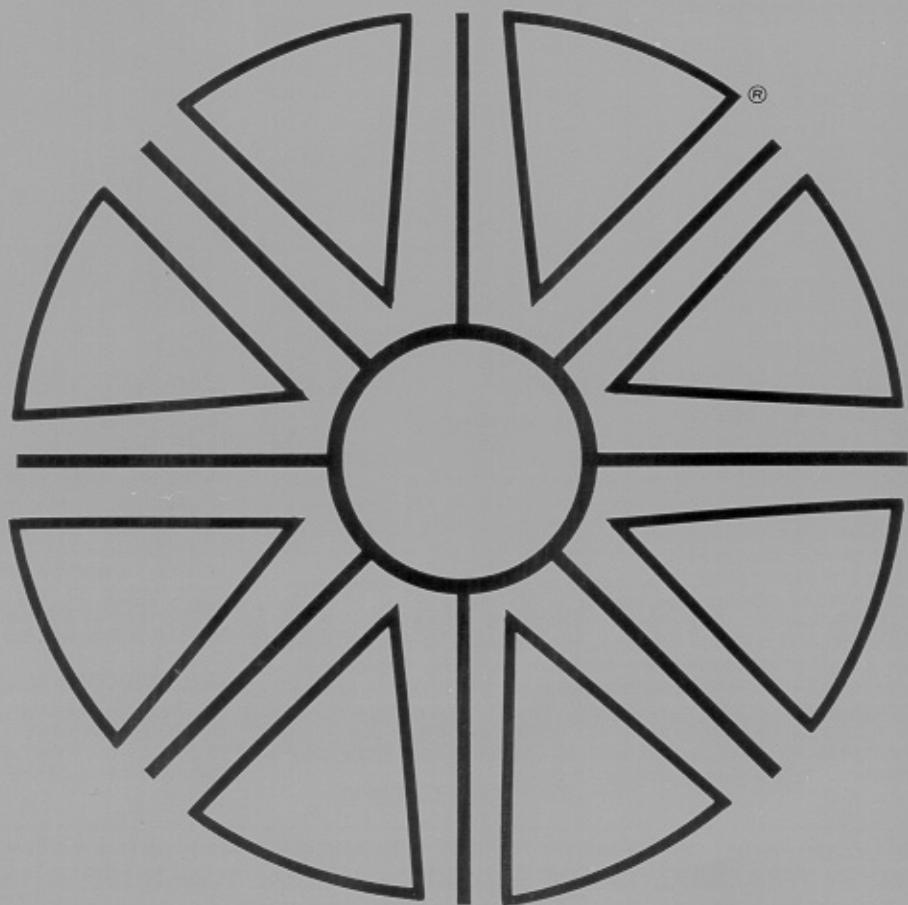


# starlite®

1111 LANCASTER AVENUE, P.O. BOX 990, ROSEMONT, PA. 19010-0911  
PHONE (610) 527-1300 - (800) 727-1022 - TELEFAX NO. (610) 527-4463

## **SUPER ABRASIVE DIAMOND AND CBN TOOLS**

DECIMAL AND METRIC SIZES



## **HIGH-SPEED AIR DRIVEN TOOLS**

CATALOG C00100

JULY 1996

starlite 

## DIAMOND GRINDING TOOLS HAVE MAGNICON METAL BONDING ...

### HIGHER CUTTING RATE! LONGER USEFUL LIFE!

Magnicon Bonding ... the most significant advance in the manufacture of diamond grinding tools in the past decade ... and only Starlite Diamond Grinding Tools have it! Starlite Diamond Tools with Magnicon Bonding cut faster, last longer ... because diamonds are *welded* to the cutting surface ... can't peel off. Magnicon Bonding is an exclusive Starlite process ... employs a metal bond specially developed for low ductility and great strength. The cohesiveness of this alloy permits a concentration of diamonds not obtainable with ordinary bonded wheels.

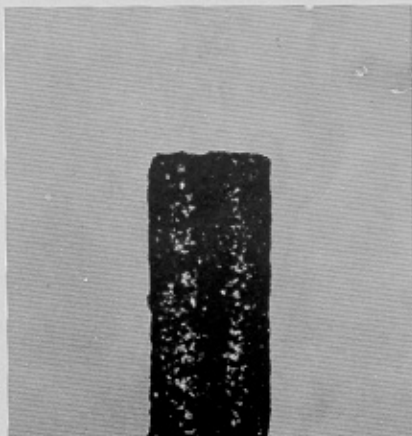


### BLOCK-SHAPED DIAMOND PARTICLES USED ON ALL STARLITE DIAMOND TOOLS

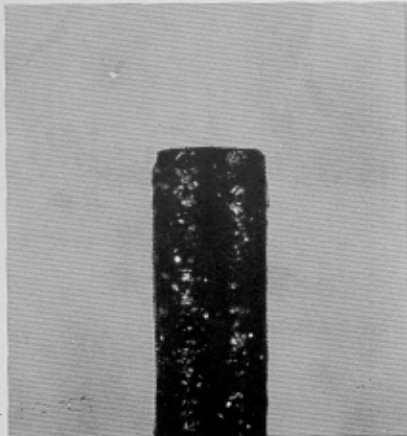
Starlite diamond powder, shown in photomicrograph above, is specially-selected and graded. Only splinter-free block shapes are used on Starlite Tools. When anchored on the cutting surface by Magnicon Metal Bonding these diamond particles provide higher cutting rate, longer useful life.

### LABORATORY TESTS PROVE STARLITE TOOLS SUPERIOR

"Torture Tests" in the laboratories of the United States Testing Company proved Starlite Diamond Grinding Tools with Magnicon Metal Bonding outwear ordinary diamond tools by as much as 55%! The photomicrographs on the right illustrate the difference between Starlite and ordinary diamond tools. Both tools were subjected to identical loads ... yet note the gaps in the ordinary tool where diamonds have been eroded from the cutting surface. The Starlite tool shows practically no wear. Unretouched photographs.



Starlite Magnicon Bond Mtd. Point



Ordinary Metal Bond Mtd. Point

### DIAMOND CONCENTRATION AND DEPTH:

While there are no firm standards of diamond concentration in diamond grinding tools, reputable manufacturers use 72 carats of diamond powder/cubic inch of impregnation for 100 concentration wheels. Magnicon Bonding makes possible a higher concentration of diamond powder ... So Starlite Diamond Grinding Tools contain 108 carats of pure diamond powder/cubic inch of impregnation. Starlite products with Magnicon Bonding guar-

antee 150 concentration ... the concentration of choice for faster-cutting longer-lasting diamond grinding tools.

### WIDEST VARIETY OF STYLES AND SIZES:

Unmounted Starlite Diamond Wheels are available in many standard types and sizes from 1/4" to 10" in diameter. Mounted wheels are normally made with 1/8" shank, but other shank sizes, as well as special wheel sizes may be made to order.

### SPECIAL SIZE AND TOOLS:

In addition to the products shown in this catalog, Starlite also manufactures a complete line of special form wheels, mounted wheels, and core drills made to customers' specifications. Quotations on these and other special items will be sent on request.

### UNCONDITIONAL GUARANTEE:

All Starlite Grinding Tools are unconditionally guaranteed against mechanical imperfections, and any defective item will be replaced upon application.

SEE INSIDE PAGES FOR QUANTITY DISCOUNTS AND ORDERING INSTRUCTIONS  
ALL ITEMS IN THIS CATALOG ARE STOCKED - SPECIAL TOOLS ARE AVAILABLE

PHONE (610) 527-1300

TELEFAX (610) 527-4463

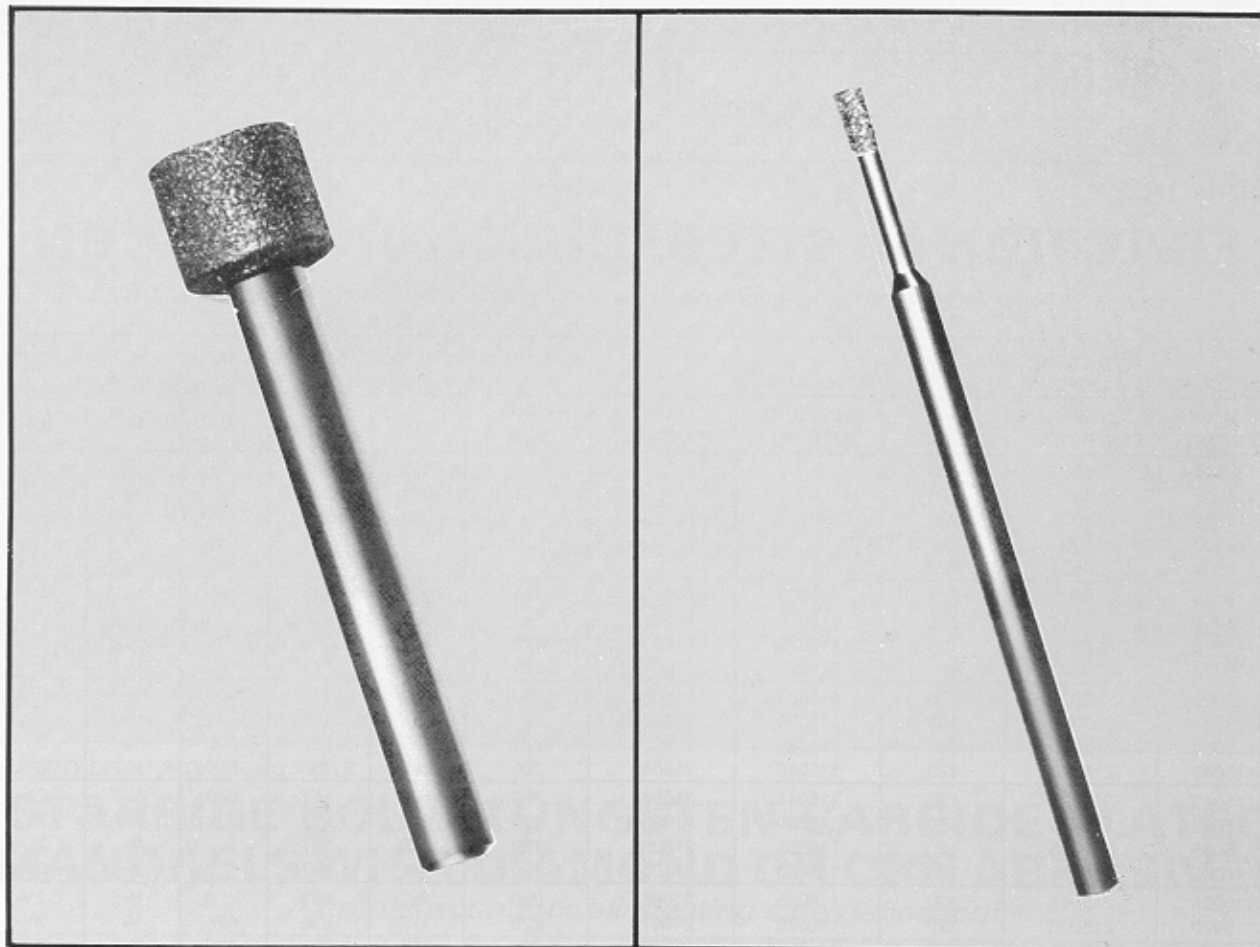


**STARLITE INDUSTRIES, INC.**

1111 LANCASTER AVENUE  
P.O. BOX 990  
ROSEMONT, PA 19010-0911

THE FOLLOWING ARE REGISTERED TRADEMARKS OF STARLITE INDUSTRIES, INC.:  
MAGNICON, STARLITE, STARFLITE, STARBOND, STARBIDE, STARPAX, AND STARPAD.

# DIAMOND AND CBN GRINDING MANDRELS

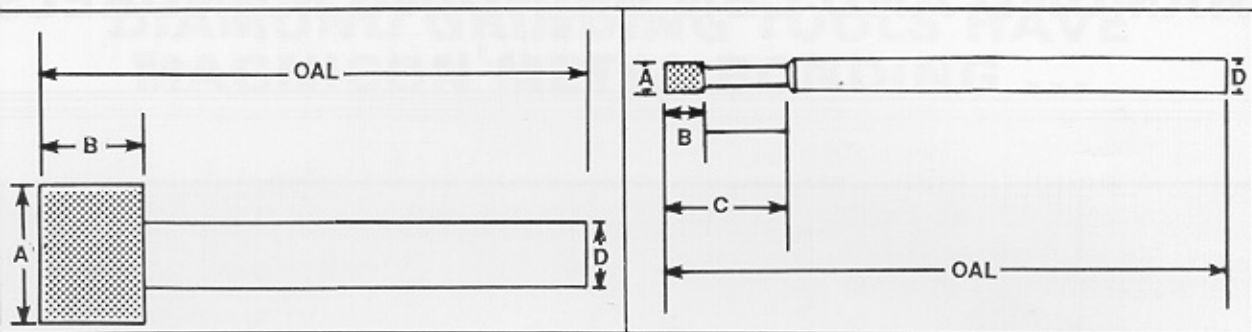


## FRACTIONAL AND METRIC SIZES

Super Abrasive Grinding Mandrels plated with our exclusive Magnicon Bonding and 150 Concentration, insure faster cutting, longer life at lower cost per hole. Hardened SS shanks keep deflection to a minimum. Over 50 years experience makes our pricing the most competitive in the market.

### TABLE OF CONTENTS

Jig Grinding Mandrels (Fractional Sizes) .....	4	Band Saws .....	
Jig Grinding Mandrels (Metric Sizes) .....	5	Flexible Diamond Pads & Discs .....	
Diamond Mounted Points .....	6	Core Drills .....	
Diamond Mounted Points & Shapes .....	7	Core Drills & Dressing Stones .....	
Plated & Brazed Countersinks .....	8	Core Drill Mounting Systems .....	
Hand & Bench Files .....	9	Diamond Hole Saws .....	
Regular Files .....	10	340,000 RPM Grinder & Accessories .....	
Needle Files .....	11	Diamond & Carbide Tooling for 340,000 Grinder .....	
Diamond Saws (Mounted & Unmounted) .....	12	Core Drilling Press .....	
Discs & Routers .....	13	30,000 RPM Air Spindle & Accessories .....	
D1A1R Cut-Off Wheels .....	14	35,000 RPM Air Spindle & Accessories .....	
D1A1 Periphery Wheels .....	15	Hand Held Grinders & Accessories .....	



DIAMOND:

CBN:

## FRACTIONAL SIZES: DIAMOND AND CBN

Request Product Sheet #COO101 for further information on internal grinding materials. 220 GRIT ALSO AVAILABLE.

For—Carbide, Glass & Ceramics JIG GRINDING MANDRELS (Super Abrasive Mounted Points)						Normal material range 50C Rockwell, high chrome, H.S.S. some grades beryllium copper. "D", "T", & "M" type steels.				
DIAMOND PART NO.	CBN PART NO.	GRIT SIZE	DIAMOND PART NO.	CBN PART NO.	GRIT SIZE	A	B	C	D	OAL
115000	215000	220				.019	.062	.125	1/8	2 1/4
115001	215001	220				.021	.062	.125	1/8	2 1/4
115002	215002	220				.023	.062	.125	1/8	2 1/4
115003	215003	220				.025	.125	.250	1/8	2 1/4
115004	215004	220				.027	.125	.250	1/8	2 1/4
115005	215005	220	116005	216005	325	.029	.079	.250	1/8	2 1/4
115010	215010	220	116010	216010	325	.039	.079	.250	1/8	2 1/4
115015	215015	120	116015	216015	220	.049	.079	.250	1/8	2 1/4
115020	215020	120	116020	216020	220	.059	.118	.250	1/8	2 1/4
115025	215025	120	116025	216025	220	.069	.118	.500	1/8	2 1/4
115030	215030	120	116030	216030	220	.079	.157	.500	1/8	2 1/4
115035	215035	120	116035	216035	220	.089	.157	.500	1/8	2 1/4
115040	215040	120	116040	216040	220	.099	.157	.500	1/8	2 1/4
115045	215045	120	116045	216045	220	.109	.157	.500	1/8	2 1/4
115050	215050	120	116050	216050	220	.118	.157	.500	1/8	2 1/4
115055	215055	120	116055	216055	220	.130	.197		1/8	2 1/4
115060	215060	120	116060	216060	220	.140	.197		1/8	2 1/4
115065	215065	120	116065	216065	220	.157	.197		1/8	2 1/4
115070	215070	120	116070	216070	220	.177	.236	.625	1/4	2 1/4
115075	215075	120	116075	216075	220	.197	.236	.625	1/4	2 1/4
115080	215080	120	116080	216080	220	.236	.275	.625	1/4	2 1/4
115085	215085	120	116085	216085	220	.256	.275	.625	1/4	2 1/4
115090	215090	120	116090	216090	220	.315	.315		1/4	2 1/4
115095	215095	120	116095	216095	220	.335	.315		1/4	2 1/4
115100	215100	120	116100	216100	220	.394	.394		1/4	2 1/4
115105	215105	120	116105	216105	220	.473	.394		1/4	2 1/4
115110	215110	120	116110	216110	220	.591	.394		1/4	2 1/4
115115	215115	120	116115	216115	220	.730	.394		1/4	2 1/4

QUANTITY DISCOUNTS DO NOT APPLY.

## METRIC SIZES: DIAMOND AND CBN

220 GRIT ALSO AVAILABLE.

For - Carbide, Glass & Ceramics JIG GRINDING MANDRELS (Super Abrasive Mounted Points)						Normal material range 50C Rockwell, high chrome, H.S.S. some grades beryllium copper. "D", "T", & "M" type steels.				
DIAMOND PART NO.	CBN PART NO.	GRIT SIZE	DIAMOND PART NO.	CBN PART NO.	GRIT SIZE	A	B	C	D	OAL
115205	215205	220	116205	216205	325	0.75	2	6	3	57
115210	215210	220	116210	216210	325	1.00	2	6	3	57
115215	215215	120	116215	216215	220	1.25	2	6	3	57
115220	215220	120	116220	216220	220	1.50	3	6	3	57

QUANTITY DISCOUNTS DO NOT APPLY.



# METRIC SIZES: DIAMOND AND CBN

For - Carbide, Glass & Ceramics JIG GRINDING MANDRELS (Super Abrasive Mounted Points)						Normal material range 50C Rockwell, high chrome, H.S.S. and grades beryllium copper, "D", "T", & "M" type steels.				
DIAMOND PAT NO.	CBN PART NO.	GRIT SIZE	DIAMOND PART NO.	CBN PART NO.	GRIT SIZE	A	B	C	D	OAL
115225	215225	120	116225	216225	220	1.75	3	12	3	57
115230	215230	120	116230	216230	220	2.00	4	12	3	57
115235	215235	120	116235	216235	220	2.25	4	12	3	57
115240	215240	120	116240	216240	220	2.50	4	12	3	57
115245	215245	120	116245	216245	220	2.75	4	12	3	57
115250	215250	120	116250	216250	220	3.00	4	12	3	57
115255	215255	120	116155	216255	220	3.30	5		3	57
115260	215260	120	116260	216260	220	3.50	5		3	57
115265	215265	120	116265	216265	220	4.00	5		3	57
115270	215270	120	116270	216270	220	4.50	6	16	6	57
115275	215275	120	116275	216275	220	5.00	6	16	6	57
115280	215280	120	116280	216280	220	6.00	7	16	6	57
115285	215285	120	116285	216285	220	6.50	7	16	6	57
115290	215290	120	116290	216290	220	8.00	8		6	57
115295	215295	120	116295	216295	220	8.50	8		6	57
115300	215300	120	116300	216300	220	10.00	10		6	57
115305	215305	120	116305	216305	220	12.00	10		6	57
115310	215310	120	116310	216330	220	15.00	10		6	57
115315	215315	120	116315	216315	220	18.50	10		6	57
115400	215400	120	116400	216400	325	1.0	3	6	3	40
115405	215405	120	116405	216405	325	1.2	3	8	3	40
115410	215410	120	116410	216410	325	1.5	4	10	3	40
115415	215415	120	116415	216415	325	1.8	4	10	3	40
115420	215420	120	116420	216420	325	0.9	3	6	3	40
115425	215425	120	116425	216425	220	1.0	3	6	3	40
115430	215430	120	116430	216430	220	1.2	3	8	3	40
115435	215435	120	116435	216435	220	1.5	4	10	3	40
115440	215440	120	116440	216440	220	1.8	4	10	3	40

QUANTITY DISCOUNTS DO NOT APPLY.

## STARBIDE SOLID TUNGSTEN CARBIDE PLATED MANDRELS WITH DIAMOND OR CBN ABRASIVES

*A breakthrough for eliminating side deflection!*

FRACTIONAL								METRIC							
DIAMOND PART NO.	CBN PART NO.	GRIT SIZE	A	B	C	D	OAL	DIAMOND PART NO.	CBN PART NO.	GRIT SIZE	A	B	C	D	OAL
114030	214030	120	.079	.157	.500	1/8	2-1/4	114028	214028	120	2.0	4.0	12.7	3.0	57
114035	214035	120	.089	.157	.500	1/8	2-1/4	114033	214033	120	2.2	4.0	12.7	3.0	57
114040	214040	120	.099	.157	.500	1/8	2-1/4	114038	214038	120	2.5	4.0	12.7	3.0	57
114045	214045	120	.109	.157	.500	1/8	2-1/4	114043	214043	120	2.7	4.0	12.7	3.0	57
114050	214050	120	.118	.157	.500	1/8	2-1/4	114048	214048	120	3.0	4.0	12.7	3.0	57
114055	214055	120	.130	.197	.625	1/8	2-1/4	114053	214053	120	3.3	5.0	15.8	3.0	57
114060	214060	120	.140	.197	.625	1/8	2-1/4	114058	214058	120	3.5	5.0	15.8	3.0	57
114105	214105	120	.157	.197		1/8	2-1/4	114100	214100	120	4.0	5.0		3.0	57
114115	214115	120	.177	.236		1/8	2-1/4	114110	214110	120	4.5	6.0		3.0	57
114125	214125	120	.197	.236		1/8	2-1/4	114120	214120	120	5.0	6.0		3.0	57
114135	214135	120	.236	.275		1/4	2-1/4	114130	214130	120	6.0	7.0		6.0	57
114135	214145	120	.256	.275		1/4	2-1/4	114140	214140	120	6.5	7.0		6.0	57
114155	214155	120	.276	.315		1/4	2-1/4	114150	214150	120	7.0	8.0		6.0	57
114165	214165	120	.315	.315		1/4	2-1/4	114160	214160	120	8.0	8.0		6.0	57
114175	214175	120	.354	.394		1/4	2-1/4	114170	214170	120	9.0	10.0		6.0	57
114185	214185	120	.394	.394		1/4	2-1/4	114180	214180	120	10.0	10.0		6.0	57
114195	214195	120	.473	.394		1/4	2-1/4	114190	214190	120	12.0	10.0		6.0	57
114205	214205	120	.591	.394		1/4	2-1/4	114200	214200	120	15.0	10.0		6.0	57
114215	214215	120	.787	.394		5/16	2-1/4	114210	214210	120	20.0	10.0		8.0	57
114225	214225	120	.984	.394		5/16	2-1/4	114220	214220	120	30.0	10.0		8.0	57
114235	214235	120	1.181	.394		5/16	2-1/4	114230	214230	120	30.0	10.0		8.0	57

QUANTITY DISCOUNTS DO NOT APPLY.