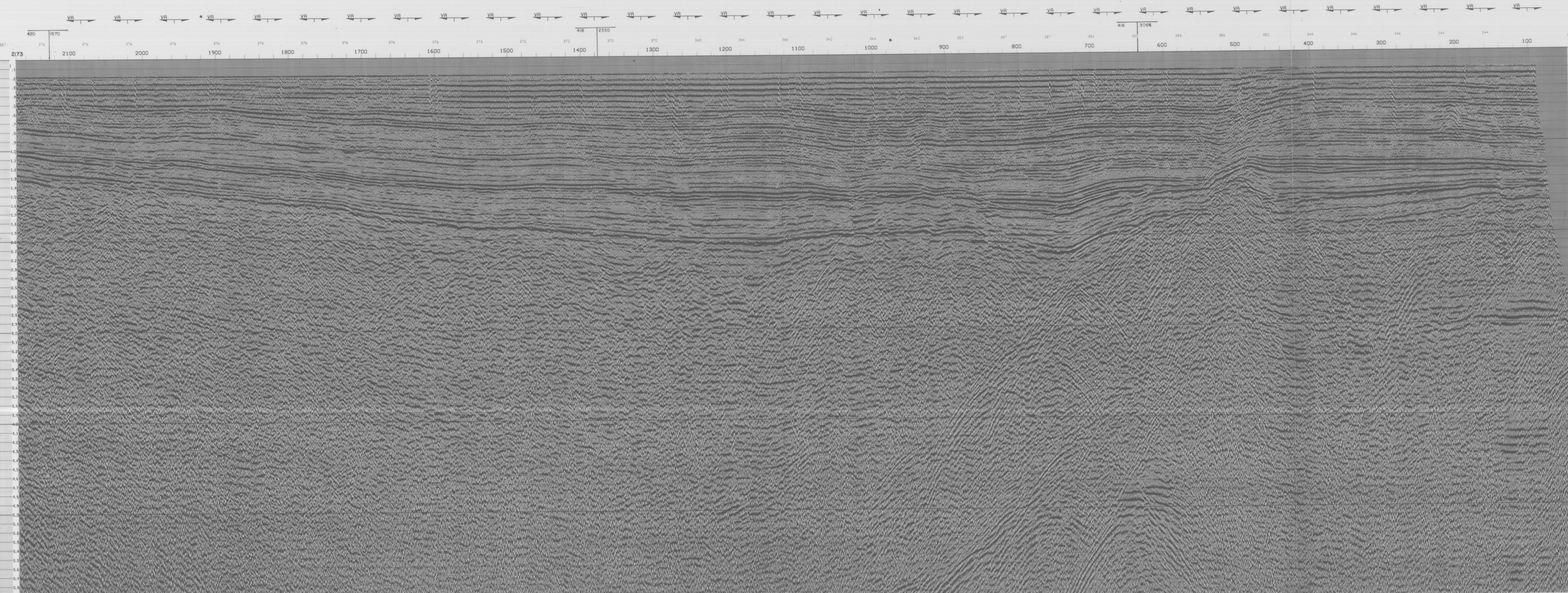


SCALE - 1"=4100F

SE

SE

SE



Cresser Olympic
 ***** FILMING PARAMETERS *****
 FILM REEL NUMBER - 08086
 GRAIN VALUE - 85
 POLARITY - BLACK +VE
 HORIZONTAL SCALE - 60.000 TR/IN
 VERTICAL SCALE - 2.500 IN/SEC
 FILMING DIRECTION - R/L
 DATE FILMED - 11/04/75

1975 ST GEORGE BASIN DETAIL
 LINE 305-NW
 SP 100 T0 2180
 24 FOLD STACK

FIELD INFORMATION

ACQUIRED BY	DRESSER OLYMPIC	VESSEL	STATE WAVE
INSTRUMENTS	DPS IV	TYPE GRAIN	BINARY
FILTER	8/18-62	NO CHANNELS	67
SWEEP RATE	4 MS	REC LENGTH	6.0 SEC
BOUNCE	4 AIR GUNS	AVG DEPTH	35 FEET
CU IN	1092	PRESSURE	
POP INTER	82 FEET	HYDRA/DRISIP	30
DRISIP INTER	164 FEET	CABLE DEPTH	95 FEET
NO. GROUPS	48	CABLE LEN	2400 METERS
DIST TR 1	8692 FEET	DIST TR 48	984 FEET
SRAT DIR	SE-NW	DATE	SEPT 16, 1975

- PROCESSING SEQUENCE**
- 1) EDIT & DEMULTIPLEX
 - 2) 2 ON 1 SUM
 - 3) V2T GAIN RECOVERY & RECORD EQUALIZATION
 - 4) DECONVOLUTION
 AUTO 2ND ZERO CROSSING PRED LENGTH
 SOBS OPERATOR LENGTH
 START GATE NEAR TR 600MS FAR TR 2200MS
 END GATE NEAR TR 2100MS FAR TR 9700MS
 - 5) VELOCITY ANALYSIS AT 1 MILE INTERVALS
 - 6) APPLY NMO
 - 7) MUTE
 - 8) STACK 24 FOLD
 - 9) DECONVOLUTION
 AUTO 2ND ZERO CROSSING PRED LENGTH
 SOBS OPERATOR LENGTH
 GATE START 600MS END 2500MS
 - 10) DIGITAL FREQUENCY FILTER
 12-30 HZ 0.0 - 1.5 SEC
 10-90 HZ 2.5 - 2.4 SEC
 8-90 HZ 2.4 - 6.0 SEC
 - 11) DIGITAL ASC 1000MS LENGTH

TRACE SUPPRESSION

1	2	3	4	5	6	7	8	9	10	11	12	13	14	15	16	17	18	19	20	21	22	23	24
---	---	---	---	---	---	---	---	---	----	----	----	----	----	----	----	----	----	----	----	----	----	----	----