

J-1. ff_oper_view.tcl, ff_oper_viewX.tcl

1.0 General Information

1.1 Application Description

The applications ff_oper_view.tcl and ff_oper_viewX.tcl are Tcl/tk programs used to view most of the files in the flat files archive (see section D for general information on the flat files archive). The difference between the two applications is the directory structure that is recognized: ff_oper_view.tcl is for the latest directory structure, and ff_oper_viewX.tcl is for the original directory structure. These programs can handle and translate the following:

- image formats (gif, jpg, jpeg, png, sxd)
- spreadsheet (csv, gnu, ksp, sxc, xls)
- web pages (htm, html)
- MS Powerpoint, Open Office Presentation(ppt, sxi)
- Open Office Formulae (sxm)
- documents (pdf, abw, doc, rtf, sxw, zabw)
- compressed files(tar, zip, gz, and Z)
- ascii text files (txt)

1.2 Design Considerations

Currently the software handles the predefined extensions and funnels the file to a third party COTS software, which is packaged with LINUX. Other translators will be made available in subsequent releases.

Additional archive space has been allocated to files that the RFC Archive teams may have overlooked. These directories are made available under the miscellaneous block as Misc1, Misc2, Misc3, Misc4, Misc5, and Misc6. In addition, all archive types will also have reserve space for “other” files, which do not fit the common categories as defined by the 13 RFCs.

1.3 Assumptions the applications make

Flat files must be stored under the /data/flatfiles directory path.

Flat files which end with the file extension **gif**, **jpg**, **jpeg**, **png** or **sxd** are handled as images/graphics and opened with the viewer /usr/bin/display.

Flat files which end with the file extension **htm** or **html** are handled as webpages and are opened with the browser /usr/bin/mozilla.

Flat files which end with the file extension **pdf** are handled as Adobe documents and are opened with the reader `/usr/bin/xpdf`.

Flat files which end with the file extension **txt** are handled as ascii text documents and are opened with the reader `/usr/X11R6/bin/nedit`.

Flat files which end with the file extension **abw**, **doc**, **rtf**, **sxw** or **zabw** are handled as OpenOffice documents and are opened with the software `/usr/bin/oowriter`.

Flat files which end with the file extension **sxm** are handled as OpenOffice formulae documents and are opened with the software `/usr/bin/oomath`.

Flat files which end with the file extension **ppt** or **sxi** are handled as OpenOffice documents and are opened with the software `/usr/bin/ooimpress`.

Flat files which end with the file extension **csv**, **gnu**, **ksp**, **sxc** or **xls** are handled as spreadsheets and are opened with the software `/usr/bin/oocalc`.

Flat files which end with the file extension **tar**, **zip**, **Z**, or **gz** are handled as compressed files and are opened with the software `/usr/bin/ark`.

All other flat files that do not end with the file extensions listed above are exported to the mozilla browser. If a plug-in is available for the file type, mozilla will automatically divert the file to the associated application. This allows the RFC an opportunity to control the opening of file extensions by passing the controls through the mozilla browser as furnished on the AX. Please consult mozilla's online help concerning plug-ins on a computer outside the firewall.

The current month and year is used as the initial default time. Users should adjust the sliders to indicate the proper time so that they can retrieve the appropriate file.

Reserve space for years 1990 to 2016 have been created on the AX. If more decades of archive space need to be created, contact the RFC Support Group.

1.4 Enhancements/Bug Fixes/Changes

Build OB7.2

This application was updated to take into account the change in the version of Tcl/Tk, the upgrade of the OS in ob7.2, changes in the COTS applications that are available, and changes in the flat files directory structure. Also as part of ob7.2 the symbolic link `"/rfc_arc_data/flatfiles"` is removed. Documentation was updated to reflect these changes.

Build OB6

Bug Fixes

- R1-48 Code changed so that options specified are updated when user makes a change in the left panel.

Build OB5

The graphics subdirectory under each was made obsolete. All files stored under this directory are to be moved to images directory and the graphics directory should be eliminated.

Build OB4

The flatfiles directory and its contents were moved from /rfc_arc_data partition to the /data partition. A symbolic link was put in place under /rfc_arc_data to point to the new location. This was done to minimize the impact on rax applications and any local applications an RFC might have.

2.0 Configuration Information

- | | |
|--|---|
| a) apps_defaults tokens on AX:
adb_dir: | archive directory where programs are kept |
| b) Environment variables
HOME

LOGNAME | used for saving data if apps_defaults tokens not set

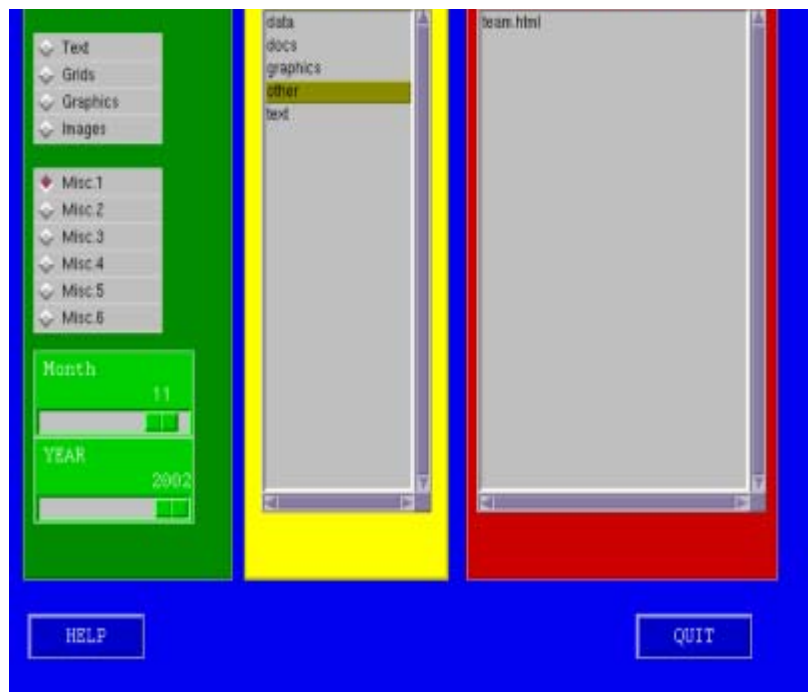
used in SHEF-encoded edited data file |
| c) Programs, scripts, and files
\$adb_dir/bin/fam/ff_oper_view.tcl

\$adb_dir/bin/fam/ff_oper_viewX.tcl

\$adb_dir/bin/fam/ff_oper_view.hlp | scripts called by arcmenu to launch flatfile archive viewer.

brief notes to help user navigate through the FAM window. |
| d) Directories used
/data/flatfiles/ | the script is dependent on this root directory and sub directories beneath it. |

3.0 User How-To



These applications can be run through *arcmenu's main menu*, or on the command line. Note: example GUI shown above is for the `ff_oper_viewX.tcl` application.

1. Select the "File Type" by clicking on the adjacent diamond.
2. Move the slider bars to the month and year of interest.
3. Select the "Product" category by clicking on product name.
4. The archived file of interest will appear in the far-right column. Double click on a file name to view.

4.0 Troubleshooting Information

If run with a background window, error messages are displayed. All other problems or bugs should be reported to the RFC Support Group.