



U.S. Department
of Homeland Security
**United States
Coast Guard**

LOCAL NOTICE TO MARINERS

District: 7

Week: 17/08

Issued by:
Commander, Seventh Coast Guard District
909 SE 1st Avenue, Miami, Florida 33131-3028
Telephone (305) 415-6730 or (305) 415-6751
Fax (305) 415-6757
Office hours 7:30 a.m. - 4:00 p.m., M-F

BROADCAST NOTICE TO MARINERS

Navigation information having been of immediate concern to the Mariner, and promulgated by the following broadcasts, has been incorporated in this notice when still effective:

- CCGD7 (D7) BNM 452-08 to 460-08
- SECTOR CHARLESTON (CHA) BNM 096-07 to 103-08
- SECTOR JACKSONVILLE (JAX) BNM 095-07 to 122-08
- SECTOR MIAMI (MIA) BNM 129-08 to 135-08
- SECTOR KEY WEST (KWT) BNM 043-08 to 064-08
- SECTOR ST.PETERSBURG (STP) BNM 376-08 to 401-08
- SECTOR SAN JUAN (SJM) BNM 107-08 to 109-08

NOTES: (1) Unless otherwise indicated, missing and destroyed structures are presumed to be in the immediate vicinity, mariners should proceed with caution.

(2) The Local Notice to Mariners consists of a Weekly Edition.

(3) Inquiries, Published Articles or Information: (e-mail) Bernard.A.Dukes@uscg.mil

REFERENCES: Light List, Vol. III, Atlantic and Gulf Coasts, 2007 Edition (COMDTPUB P16502.3).
U.S. Coast Pilot 4, Atlantic Coast: Cape Henry to Key West, 2007 (39th Edition).
U.S. Coast Pilot 5, Atlantic Coast: Gulf of Mexico, Puerto Rico and Virgin Islands 2007 (35th) Edition.

The Local Notice to Mariners is available online at:
<http://www.navcen.uscg.gov/lnm/d7>

The United States Coast Guard Navigation Information Service (NIS)

The United States Coast Guard Navigation Information Service (NIS), operated by the USCG Navigation Center, is staffed 24 hours a day, 7 days a week. The NIS provides information on the current operational status, effective policies, and general information for GPS, DGPS, and LORAN-C. The NIS also disseminates Safety Broadcasts (BNM), Local Notice to Mariners (LNM), and the latest Notice Advisory to Navstar Users (NANU). NANU notices can be obtained via email subscription through the USCG Navigation Center website: <http://www.navcen.uscg.gov/gps/status/default.htm>.

In addition, the NIS investigates all reports of degradation or loss of GPS, DGPS or LORAN service. Mariners are encouraged to report all degradation or loss of radio navigation services to the NIS via any of the following: Phone: (703) 313-5900, Email: webmaster@smtp.navcen.uscg.mil, or on the World Wide Web at: <http://www.navcen.uscg.gov>

REPORT DISCREPANCIES IN AIDS TO NAVIGATION TO THE NEAREST COAST GUARD UNIT

SAFE BOATING AND SEAMANSHIP PROGRAMS: (See Enclosure Section)

Bridge Construction and Repair - Drawbridge Status - Bridge Information: (See Enclosure Number 5)

ABBREVIATIONS

A through I

ACOE - Army Corps of Engineers
ADRIFT - Buoy Adrift
AICW - Atlantic Intracoastal Waterway
B - Buoy
BKW - Breakwater
B - Refer to Light List
BNM - Broadcast Notice to Mariner
CG - Refer to Light List
CHAN - Channel
CGD - Coast Guard District
CR - Refer to Light List
C/O - Cut Off
CONT - Contour
CONSTR - Construction
CRK - Creek
CONST - Construction
DBN - Daybeacon
DBD/DAYBD - Dayboard
DBN/DEST - Daybeacon Destroyed
DBN IMCH - Daybeacon Improper Characteristic
DISCON - Discontinued
DMGD - Daybeacon Damaged
EST - Established Aid
EVAL - Evaluation
EXT - Extinguished
FL - Flashing
FS - Fog Signal
HAZ - Hazard to Navigation
HBR - Harbor
HOR - Horizontal Clearance
HT - Height
ICW - Intracoastal Waterway
IMCH - Improper Characteristic
INL - Inlet
INOP - Not Operating
INT - Intensity
ISL - Islet

K through M

KBG - Refer to Light List
KBG-I - Refer to Light List
KBR - Refer to Light List
KBR-I - Refer to Light List
KBW - Refer to Light List
KGB - Refer to Light List
KGB-I - Refer to Light List
KGR - Refer to Light List
KGR-I - Refer to Light List
KGW - Refer to Light List
KGW-I - Refer to Light List
KRB - Refer to Light List
KRB-I - Refer to Light List
KRG - Refer to Light List
KRG-I - Refer to Light List
KRW - Refer to Light List
KWB - Refer to Light List
KWB-I - Refer to Light List
KWG - Refer to Light List
KWG-I - Refer to Light List
KWR - Refer to Light List
KWR-I - Refer to Light List
LAT - Latitude
LB - Lighted Buoy
LBB - Lighted Bell Buoy
LHB - Lighted Horn Buoy
LGB - Lighted Gong Buoy
LONG - Longitude
LNM - Local Notice to Mariners
LT - Light
LT CONT - Light Continuous
LWB - Lighted Whistle Buoy
LWP - Left Watching Properly
MISS - Missing
MR - Refer to Light List
MR-I - Refer to Light List

N through Z

NB - Refer to Light List
N/C - Not Charted
ND - Refer to Light List
NG - Refer to Light List
NGA - National Geospatial-Intelligence Agency
NL - Refer to Light List
NO - Number
NOS - National Ocean Service
NR - Refer to Light List
NW - Refer to Light List
NW - Notice Writer
NY - Refer to Light List
OBSCU - Obscured
OBST - Obstruction
OFF STA - Off Station
OBSTR - Obstruction
PRIV - Private Aid
RBN - Radio Beacon
REBUILT - Aid Rebuilt
RECOVERED - Aid Recovered
RED - Red Buoy
REDINT - Reduced Intensity
RRL - Range Rear Light
RELIGHTED - Aid Relighted
RELOC - Relocated
RESET ON STATION - Aid Reset on Station
RFL - Range Front Light
RIV - River
SEC - Section
SG - Green Square
SG-SY - Green Square with Yellow Square
SHL - Shoaling
SND - Sound
SS - Sound Signal
TEMP - Temporary Aid Change
TMK - Topmark
St M - Statute Mile
TR - Red Triangle
TRLB - Temporarily Replaced by Lighted Buoy
TRLT - Temporarily Replaced by Light
TR-TY - Red Triangle with Yellow Triangle
TRUB - Temporarily Replaced by Unlighted Buoy

Additional Abbreviations Specific to this LNM Edition: None

SECTION I - SPECIAL NOTICES

This section contains information of special concern to the Mariner.

CHARLOTTE COUNTY MANCHESTER LOCK TEMPORARILY CLOSED

MURDOCK - The Manchester Lock will be closed Monday through Friday during the hours of 7:30 am to 5:30 pm from April 2 through May 31. This closure is necessary for the removal of the lock. Due to the nature of the construction going on at the lock, if debris falls into the waterway, it may be necessary for the lock to remain closed until any debris can be removed. Please use extreme caution when navigating this area.

LNM: 14/08

GPS INTERFERENCE TESTING, CAPE CANAVERAL , AFS, FLORIDA

The GPS Navigational Signal maybe unreliable from October 24, 2008 to April 24, 2010, due to interference testing on GPS frequencies used in shipboard navigation and handheld systems. GPS systems that rely on GPS, such as E-911, AIS and DSC, may be effected within a close proximity of position 28-28-10.5N 080-34-44W. During this period GPS users are encouraged to report any GPS service outages that they may experience during this testing via the Navigation Information Service (NIS) by calling (703) 313-5900 or by using the NAVCEN's web-site's "GPS a problem worksheet" at www.navcen.uscg.gov.

LNM: 13/08

REGIONAL EXAMINATION CENTER (REC) MIAMI, TEMPORARY CLOSURE

The Coast Guard Regional Examination Center (REC) located in the Claude Pepper Federal Bldg. at 51 SW 1st Ave., rm. 601, Miami, Florida; will be closed the week of May 5-9 2008. All phone service will be suspended.

The REC functions will Re-Organize under the National Maritime Center in Martinsburg West Virginia in late summer. This closure will enhance the expedition of mariner applications.

We appreciate the patience of our mariners and Maritime Industry during this process.

REC Miami will re-open for business at 0800, 12 May 2008.

LNM: 13/08

HIGH FREQUENCY RADIOTELEX (SITOR) AMVER AND OBS SERVICE DISCONTINUED FROM COAST GUARD CAMSLANT AND COMMSTA KODIAK

The Coast Guard will terminate high frequency (HF) radiotelex (SITOR) services from Communications Area Master Station Atlantic (CAMSLANT - NMN) and Communications Station Kodiak (NOJ) used for the collection of AMVER ship position reports and of meteorological observations effective 2400Z March 31, 2008. HF radiotelex services from Communications Area Master Station Pacific (CAMSPAC - NMC/NMO) and Communications Station Guam (NRV) will continue until at least September 30, 2008.

AMVER and NOAA meteorological reports will continue to be received at no charge through ShipCom HF radiotelex (NBDP) service via stations KLB near Seattle, WA, and WLO near Mobile, AL, and NOAA's SEAS (Shipboard Environmental (data) Acquisition System) program through Inmarsat C. AMVER reports may also be sent at no charge through Globe Wireless.

Broadcasts of maritime safety information by HF SITOR (HF NAVTEX) will not be affected by this action.

LNM: 09/08

LORAN-C OPERATIONS, LORAN DATA CHANNEL (LDC) RESEARCH

(A.) LORAN Stations Jupiter, Florida (7980-Y), Las Cruces, New Mexico (9610-X), and Middletown, California (9940-X) will be on air testing the Loran Data Channel (LDC) uninterrupted until further notice.

(B.) LORAN Stations Seneca, New York (8970-X), Gillette, Wyoming (8290-X), and Grangeville, Louisiana (7980-Y) will be on air testing LDC between 0800 and 1500 local time Monday through Friday.

(C.) LORAN Stations Dana, Indiana (9960-Z) and George, Washington (5990-Y) are expected to begin testing LDC in the near further.

(D.) The test broadcast will use pulse position modulation of a ninth pulse added one thousand microseconds after the standard pulse group. Throughout the test period the signal will meet all service performance parameters published in the 1994 specification of the LORAN-C signal. User should not experience any tracking errors or service interference from this test broadcast. Users will be notified of any changes to the test schedule and when the testing is complete.

(E.) LORAN users are encouraged to report any LORAN service degradation or outages that may experience via the Navigation Information Service (NIS) by calling (703) 313-5900 or by using the NAVCEN web sites report a LORAN problem worksheet at www.navcen.uscg.gov. Additional information on the LORAN data channel and the 1994 LORAN-C signal specification may also be found at this website.

(F.) Address inquiries to the chain operations control officer CWO S. McDonald of the northeast and Great Lakes U.S. LORAN-C Chains at (703) 313-5880 or LT. Boyd for the Southeast and South Central U.S. Chains at (703) 313-5873.

(G.) Current LORAN-C status is available 24 hours per day through internet address www.navcen.uscg.gov.

LNM: 42/07

SPECIAL WARNING NUMBER 123, SOMALI.

Due to continuing conditions of armed conflict and lawlessness in Somalia and waters off its coast, mariners are advised to avoid the Port of Mogadishu and to remain at least 200 nautical miles distant from the Somali Coast.

For Complete Text of Message see Enclosure (2).

LNM: 47/05

OPERATION "ON GUARD"

U. S. Coast Guard Marine Safety Office Section Miami announces Operation "ON GUARD". This operation is designed to employ Coast Guard - active duty, reserve and auxiliary, Federal Bureau of Investigation, US Customs Service, US Immigration and Naturalization Service and the Florida Department of Law Enforcement personnel in response to suspected terrorist activity at the waterfront facilities of the United States.

For Complete Text of Message See Enclosure (3).

NAVAL PROTECTION ZONES

The U. S. Coast Guard has established protection zones around U. S. Naval vessels within U. S. navigable waters. Naval vessels protection zones are established within 100 yards of any U. S. Naval vessel. This includes any vessel owned, operated, chartered, or leased by the U. S. Navy or under the operational control of the U. S. Navy.

Vessels within 500 yards of a U.S. Naval vessel shall operating at the minimum speed necessary to maintain a safe course course and proceed as directed by the official patrol. Mariners may contact the U.S. Coast Guard on VHF Channel 16 regarding this message.

DATES OF LATEST EDITIONS, NAUTICALS CHARTS AND MISCELLANEOUS MAPS

The Dates of Latest Editions, Nautical Charts and Miscellaneous Maps, dated October 1, 2007, published by the National Ocean Service, is available for issue. It may be obtained free by mail from the FAA/National Aeronautical Charting Office, Distribution Division AVN-530, 10201, Good Luck Road, Glenn Dale, MD, 20769-9700, by telephone at 1-800-638-8972 or from your local authorized nautical chart sales agent.

This is a quarterly publication listing the most recent editions of nautical charts, miscellaneous maps and publications relating to navigation, weather, etc. with brief descriptions and up-to-date prices for most of the publications listed. Much of this information may also be obtained online at: <http://chartmaker.ncd.noaa.gov/mcd/dole.htm>

LNM: 43/07

INTERNET DELIVERY OF U.S. NOTICE TO MARINERS

The National Geospatial-Intelligence Agency (NGA) has changed the way the U.S. Notice to Mariners are made available to the maritime community. NGA will continue to provide U.S. Notice to Mariners to the public but only in the digital version exclusively via the Internet.

U.S. COAST PILOT 4, ATLANTIC COAST: CAPE HENRY, VA TO KEY WEST, FL

PUBLICATION - National Ocean Service - U.S. Coast Pilot 4, Atlantic Coast: Cape Henry, VA to Key West, FL, 2007, 39th Edition, is ready for issue and may be obtained from:

Federal Aviation Administration
National Aeronautical Charting Office
Distribution Division, AVN - 530
10201 Good Luck Road
Glenn Dale, MD 20769-9700

and authorized agents of the National Ocean Service. Price \$26.00. The 2007 Edition cancels the preceding 2006 Edition. All corrections to the previous edition issued in Notices to Mariners are incorporated in this edition.

Mariners are encouraged to use the convenient -RECORD OF CHANGES- form on Page VI of this book. All Coast Pilot changes published in the U.S. Coast Guard Local Notice to Mariners, National Geospatial-Intelligence Agency Notice to mariners, and on the Internet at: <http://nauticalcharts.noaa.gov/nsd/cpdownload.htm>. are serially numbered (i.e., Changes No. 1, Changes No. 2. etc.) to assist you in tracking the changes.

SECTION II - DISCREPANCIES

This section lists all reported and corrected discrepancies related to Aids to Navigation in this edition. A discrepancy is a change in the status of an aid to navigation that differs from what is published or charted.

DISCREPANCIES (FEDERAL AIDS)

LLNR	Aid Name	Status	Chart No.	BNM Ref.	LN M St	LN M End
310	Port Royal Sound Lighted Whistle Buoy P	SS INOP	11516	834-07 D7	42/07	
525	Brunswick Spoil Area Buoy B	OFF STA	11502	111-08 CHA	17/08	
550	St Andrew Sound Outer Entrance Buoy Sta	TMK MISSING	11504	N/A	31/07	
775	Hillsboro Inlet Entrance Light	REDUCED INT	11467	098-08 MIA	13/08	
805	Port Everglades Spoil Bank East Daybeacon	TRUB	11470	506-05 MIA	47/05	
1005	Big Pine Shoal Light 22	TRLB	11445	171/168-07 KW	40/05	
1010	Looe Key Light 24	TRLB	11442	187-06 KWT	39/05	
1065	Coalbin Rock Buoy CB	Status Unreported	11439	N/A	05/08	
1080	Twenty-Eight Foot Shoal Light	TRLB/RAC INOP	11439	174-06 KWT	40/05	
1090	Rebecca Shoal Light	TRLT/DBN DMGD/DBD DEST	11439	113-06 KWT	42/05	
1230	Cape Romano Shoals Light	TRLB	11430	058-06 STP	47/05	
1625	Cedar Keys Northwest Channel Approach Light 2	TRLB	11408	0673-06 STP	19/06	
1645	Horseshoe Beach Approach Light 2	OFF STA	11407	389-08 STP	17/08	
1645	Horseshoe Beach Approach Light 2	TRLB/LT EXT/DBN DEST	11407	0859-06 STP	25/06	
1740	Little River Inlet Daybeacon 15	TRUB/DBN DEST	11534	109-08 CHA	17/08	
1750	Little River Inlet Daybeacon 18	OFF STA/TRUB	11534	031-08 CHA	04/08	
2080	Winyah Bay Channel Lighted Buoy 25	REDUCED INT	11532	364-07 CHA	01/08	
2335	Five Fathom Creek Daybeacon 17	TRUB	11518	270/267-07 CH	43/07	
2975	Cooper River Lighted Buoy 67	LT EXT	11524	047-08 CHA	08/08	
3290	Wando River Range A Front Light	LT EXT	11524	086-08 CHA	14/08	
3710	Stono Inlet Buoy 3	OFF STA	11522	238-07 CHA	31/07	
3735.3	Folly River Buoy 6	MISSING	11522	010-07 CHA	02/08	
4005	Pelican Bank Daybeacon 2	TRUB	11517	219-07 CHA	33/07	
4013	Egg Bank Buoy 4A	MISSING/TRUB	11517	N/A	12/08	
4075	Port Royal Sound Lighted Whistle Buoy P	SS INOP	11516	834-07 D7	42/07	
4275	Beaufort River Range B Rear Light	DBD DEST	11507	019-07 CHA	03/07	
4475	Broad Creek Daybeacon 8	DBN IMCH	11516	330-07 CHA	51/07	
4480	Broad Creek Daybeacon 10	TRUB	11516	192-07 CHA	27/07	
4795	Long Island Crossing Lower Range Rear Light	LT EXT	11512	096-08 CHA	16/08	
4885	Upper Flats Range Rear Light	LT EXT	11507	N/A	41/07	
4908.1	Elba Island Turning Basin Light A	LT EXT/DBN DEST	11507	296-07 CHA	46/07	
4908.3	Elba Island Turning Basin Light C	MISSING	11507	443-08 D7	15/08	
4935	The Bight Channel Light 47	LT EXT	11507	255-07 CHA	41/07	
5095	Port Wentworth Channel Range B Front Light	DBN DEST	11514	097-07 CHA	17/07	
5315	Upper Savannah River Daybeacon 39	LT EXT	11515	039-08 CHA	06/08	
5615	Wassaw Sound Buoy 13	OFF STA	11512	N/A	51/07	
5825	Medway River Daybeacon 2	DBN DMGD	11507	087-08 CHA	14/08	
6085	St Simons Sound Entrance Lighted Bell Buoy 11	SS INOP	11489	341-08 D7	10/08	
6400	St Andrew Sound Outer Entrance Buoy Sta	TMK MISSING	11504	N/A	31/07	
6430	St Andrew Sound Buoy 9	OFF STA	11489	N/A	14/08	
6575	St Marys Entrance Lighted Buoy 11	LT IMCH	11503	069-08 JAX	13/08	
6690	Cumberland Sound Upper Range A Front Light	TRLB/DBN DEST	11503	044-08 JAX	07/08	
6750	Cumberland Sound Range Rear Light A-1	LT EXT	11503	055-08 JAX	09/08	
7020	Kings Bay Light 54	TRLB/LT EXT	11503	074-08 JAX	11/08	
7115	St Johns Bar Cut Range Front Light	LT EXT	11491	131-08 JAX	17/08	
7595	Chaseville Middle Ground Shoal Daybeacon N	TRUB	11491	31-07 JAX	04/07	

7600	Chaseville Middle Ground Shoal Daybeacon S	TRUB	11491	031-07 JAX	04/07
8295	Murphy Island Light 23	LT EXT	11487	089-08 JAX	12/08
8555	Lake George North End Range Rear Light	DBN DMGD	11495	112-08 JAX	15/08
8780	Lake George South End Range Rear Light	LT EXT	11495	215-07 JAX	34/07
9335	Terminal Cut North Junction Daybeacon	TRUB/DBN DEST	11498	050-08 JAX	09/08
9550	Ponce De Leon Inlet Lighted Buoy 9	OFF STA	11485	N/A	10/08
9570	Ponce De Leon Inlet Light 12	LT EXT	11485	078-08 JAX	11/08
9585	Canaveral Harbor Approach Channel Lighted Buoy 3	LT IMCH	11481	N/A	10/08
9635	Canaveral Harbor Entrance Channel Range Rear Light	LT EXT	11478	251-07 JAX	39/07
9955	Fort Pierce Inlet Inner Harbor Lighted Buoy 13	LT EXT	11475	129-08 MIA	15/08
10304	Hillsboro Inlet Entrance Shl Daybeacon	DBN DMGD	11467	100-08 MIA	13/08
10330	Port Everglades Light 4	TRLB	11470	254-07 MIA	21/07
10535	Miami Main Channel Lighted Buoy 12	REDUCED INT	11468	063-08 MIA	08/08
10660	Fishermans Channel Light 7	TRLB/LT EXT	11468	105-08 MIA	13/08
11790	Largo Sound Channel Daybeacon 6	DBN DMGD	11464	054-08 KWT	15/08
12040	Tavernier Key Light 2	LT EXT/DBN DMGD	11464	052-08 KWT	15/08
12275	East Key Daybeacon 78A	TRLB/DBN DMGD	11464	N/A	12/08
12710	Whale Harbor Channel Daybeacon 4A	DBN DMGD	11464	048-08 KWT	14/08
13610	East Turtle Shoal Light 45	TRUB	11449	566-05 KWT	41/05
13890	Newfound Harbor Channel Daybeacon 3	TRLB/LT EXT/DBN DMGD	11446	051-08 KWT KW	49/07
15725	Coot Bay Buoy 1	OFF STA/TRUB	11433	N/A	07/08
15735	Coot Bay Daybeacon 3	TRLB	11433	176-07 KWT	01/08
15815	Whitewater Bay Daybeacon 32	MISSING/TRUB	11433	N/A	09/08
16005	Indian Key Pass Daybeacon 11	TRUB	11430	0027-08 STP	03/08
17235.5	Big Marco Pass-Gordon Pass Daybeacon 22	DBN DEST	11430	N/A	05/08
17455	Gordon Pass Channel Daybeacon 2	TRLB	11430	1058-07 STP	43/07
17470	Gordon Pass Channel Daybeacon 5	TRUB	11430	428-07 STP	17/07
17495	Gordon Pass Channel Daybeacon 7A	TRUB/DBN DEST	11430	N/A	17/08
17545	Naples Bay Channel Daybeacon 21	MISSING/TRUB	11430	202-08 STP	11/08
18065	San Carlos Bay Daybeacon 11	DBN DMGD	11427	0252-08 STP	12/08
18090	Matanzas Pass Channel Daybeacon 3	TRUB/DBN DEST	11427	179-08 STP	09/08
18100	Matanzas Pass Channel Buoy 4A	OFF STA/TRUB	11427	300-08 STP	14/08
21315	Boca Grande Yacht Basin Channel Light 1	LT EXT	11425	094-08 STP	06/08
21635	New Pass Channel Daybeacon 8	OFF STA	11425	306-08 STP	14/08
21640	New Pass Channel Daybeacon 9	OFF STA	11425	307-08 STP	14/08
22290	Tampa Bay P.O.R.T.S. Monitor Light P	TRLB/DBN DEST	11415	239-08 D7	07/08
22850	Gadsden Point Cut/Hill Cut C Channel Outbound Range Front Light	LT EXT	11416	117-08 STP	06/08
22850	Gadsden Point Cut/Hill Cut C Channel Outbound Range Front Light	LT EXT	11416	1250-07 STP	52/07
23290	Alafia River Daybeacon 10	TRUB/DBN DEST	11416	203-08 STP	11/08
23725	Tampa Bay Cut J Channel Range Rear Light	LT EXT	11416	448-08 D7	15/08
23735	Tampa Bay Cut J Channel Light 12J	MISSING/TRLB	11416	393-08 STP	17/08
25690	Clearwater Pass Channel Light 4	TRLB	11411	1118-07 STP	45/07
26075	Anclote Anchorage South Entrance Light 3	LT EXT	11411	1133-07 STP	46/07
26095	Anclote Anchorage South Entrance Daybeacon 6	OFF STA/TRUB/BUOY DMGD	11411	374-08 STP	16/08
28370	Homosassa Bay Light 4	TRLB	11409	204-07 STP	04/07
28410	Homosassa Bay Daybeacon 19	TRLB	11409	1070-07 STP	44/07

28495	Homosassa River Daybeacon 41	TRUB	11409	1071-07 STP	44/07
28635	Homosassa River Daybeacon 69A	TRUB	11409	0331-06 STP	10/06
28685	Homosassa River Daybeacon 74	TRUB/DBN DEST	11409	0260-08 STP	12/08
28805	Crystal River Entrance Daybeacon 5	TRUB/DBN DMGD	11408	1204/1199-OSTP	49/07
29250	Cross Florida Greenway Daybeacon 24	DBN DMGD	11408	955-07 STP	38/07
29920	Cedar Keys Northwest Channel Approach Light 2	TRLB	11408	0673-06 STP	19/06
29985	Cedar Keys Northwest Channel Daybeacon 17A	TRUB	11408	718-07 STP	28/07
30360	Horseshoe Beach Approach Light 2	OFF STA	11407	389-08 STP	17/08
30360	Horseshoe Beach Approach Light 2	TRLB/LT EXT/DBN DEST	11407	0859-06 STP	25/06
30470	Steinhatchee River Daybeacon 7	OFF STA/TRUB	11407	361-08 STP	16/08
30730	Puerto Arecibo Buoy 2	MISSING	25668	091-08 SJN	14/08
31160	Las Cucarachas Light	TRLT/LT IMCH	25667	085-07 SJN	10/07
31165	Las Croabas Daybeacon 1	DBN DMGD	25667	271-07 SJN	43/07
31170	Las Croabas Daybeacon 2	DBN DMGD	25667	271-07 SJN	42/07
31175	Las Croabas Daybeacon 3	DBN DMGD	25667	271-07 SJN	42/07
31685	Isla Culebrita Light	LT EXT	25654	N/A	28/07
31855	Bahia De Jobos Light	LT EXT	25689	098-07 SJN	14/07
32215	Bahia De Guanica Range Front Light	LT EXT	25679	298-07 SJN	49/07
32220	Bahia De Guanica Range Rear Light	LT EXT	25679	327/297-07 SNJ	49/07
32345	Bahia De Mayaguez Entrance Lighted Buoy 3	REDUCED INT	25673	112-08 SJN	17/08
32350	Bahia De Mayaguez Entrance Lighted Buoy 4	REDUCED INT	25673	111-08 SJN	17/08
32380	Bahia De Mayaguez Lighted Buoy 6	SINKING	25673	077-08 SJ	12/08
32960	Round Reef Southwest Daybeacon 2	MISSING/TRLB/DBN DEST	25645	047-08 GAN	08/08
33375	Hicacal Beach Range Front Light	Status Unreported	26230	N/A	09/08
33410	St Nicolas Point Channel Light 6	TRUB	26230	067-05 GAN	11/05
33535	Mud Island Light 1	TRUB	26230	068-05 GAN	11/05
34010	Little River-Winyah Bay Light 84	TRLB/DBN DEST	11534	091-08 CHA	15/08
34733	Stono River Daybeacon 40	TRUB/DBN DEST	11518	092-08 CHA	15/08
35070	South Edisto River Range A Front Light	LT IMCH/DBN DEST	11517	142-07 CHA	22/07
35215	Coosaw River Light 187	MISSING	11517	066-08 CHA	10/08
35215	Coosaw River Light 187	MISSING/TRLB	11517	068-08 CHA	11/08
35330	Brickyard Creek Light 210	LT EXT	11518	307-07 CHAR	49/07
35485	Beaufort River Daybeacon 244	DBN DEST	11516	034-08 CHA	05/08
35535	Beaufort River Range B Rear Light	DBD DEST	11507	019-07 CHA	03/07
35610	Daws Island South Spit Buoy 2	OFF STA	11507	298-07 CHA	47/07
35735	Calibogue Sound Daybeacon 28	TRUB/DBN DEST	11507	098-08 CHA	16/08
35900	Elba Island Cut Light 10	LT EXT	11507	N/A	43/07
35970	Wilmington River Daybeacon 21	TRUB/DBN DEST	11507	114-08 CHA	17/08
36080	Skidaway River Light 43	DBN DMGD	11507	073-08 CHAR	13/08
36170	Skidaway Narrows Daybeacon 73	TRUB/DBN DMGD	11507	074-08 CHA	13/08
36620	South Newport River Light 135	TRLB	11507	12-08 CHAR	38/07
36785	Old Teakettle Creek Light 173	DBN DMGD	11507	364-06 CHA	48/06
36970	Buttermilk Sound Range A Rear Light	LT EXT/DBN DEST	11507	151-07 CHA	22/07
37075	Frederica River Daybeacon 227	MISSING	11507	115-08 CHA	17/08
37865	Cumberland Sound Range Rear Light A-1	LT EXT	11503	055-08 JAX	09/08
37870	Cumberland Sound Upper Range A Front Light	TRLB/DBN DEST	11503	044-08 JAX	07/08
38230	Gunnison Cut Light 63	TRUB/DBN DEST	11489	130-08 JAX	17/08
38905.5	Tolomato River Lighted Buoy 59	LT EXT	11485	129-08 JAX	16/08
39155	San Sebastian River Daybeacon 15	TRUB/DBN DEST	11485	100-08 JAX	13/08
39185	San Sebastian River Daybeacon 26	TRUB	11485	322-07 JAX	47/07
39240	Matanzas River Daybeacon 20	DBN DMGD	11485	125-08 JAX	16/08

39350	Matanzas River Daybeacon 47	TRLB/DBN DEST	11485	063-08 JAX	10/08
39557	Matanzas River Daybeacon 84	MISSING/TRUB	11485	128-08 JAX	16/08
39665	Matanzas River Daybeacon 108	DBN DEST	11485	081-08 JAX	12/08
39895	Halifax River Light 16	DBN DMGD	11485	93-08 JAX	12/08
40473	Hailfax River Daybeacon 68A	TRUB/DBN DMGD	11485	054-08 JAX	09/08
40500	Ponce De Leon Cut Buoy 2	MISSING	11485	N/A	16/08
40515.1	Inlet Harbor Buoy 2A	MISSING/TRUB	11485	N/A	15/08
40520	Inlet Harbor Buoy 4	DBN IMCH	11485	N/A	45/07
40595	Ponce De Leon Cut Daybeacon 12	MISSING/TRUB	11485	119-08 JAX	16/08
40715	Sheephead Cut Shoal Daybeacon	TRUB/DBN DEST	11485	080/08 JAX	11/08
40720	South Sheephead Cut Junction Daybeacon	TRUB	11485	297/290-07 JAX	44/07
40795	New Smyrna Beach Light 49	TRLB/LT EXT	11485	090-08 JAX	12/08
41060	Mosquito Lagoon Daybeacon 40	TRUB/DBN DEST	11485	094-08 JAX	12/08
41100	Indian River (North Section) Light 1	MISSING/TRLB	11485	113-08 JAX	15/08
41145	Indian River (North Section) Daybeacon 11	TRUB	11485	308-07 JAX	46/07
42105	Indian River (North Section) Daybeacon 74	TRUB/DBN DEST	11485	066-08 JAX	10/08
42490	Banana River Daybeacon 7A	TRLB	11485	218-07 JAX	35/07
43290	Indian River (South Section) Daybeacon 17	TRUB/DBN DEST	11472	123-08 JAX	16/08
43405	Indian River (South Section) Daybeacon 29	DBN DEST	11472	088-08 JAX	12/08
43435	Indian River (South Section) Daybeacon 36	DBN DEST	11472	161-08 MIA	17/08
43460	Indian River (South Section) Light 41	DBN DEST	11472	157-08 MIA	17/08
43780	Indian River (South Section) Daybeacon 80	DBN DEST	11472	N/A	12/08
43865	Indian River (South Section) Daybeacon 98	DBN DEST	11472	N/A	12/08
45195	Indian River (South Section) Daybeacon 188	TRUB/DBN DEST	11475	110-08 MIA	14/08
45815	Indian River (South Section) Daybeacon 226	TRLB/DBN DEST	11472	044/08 JAX	06/08
46085	South Jupiter Narrows Daybeacon 25	DBN DEST	11472	149-08 MIA	17/08
46240	Jupiter Inlet Buoy 2	OFF STA	11472	028-08 MIA	05/08
46605	Lake Worth North Daybeacon 37	TRUB/DBN DEST	11472	147-08 MIA	17/08
46725	Lake Worth South Daybeacon 2A	TRUB/LT EXT	11472	158-08 MIA	17/08
47455	Stranahan River Light 27	TRUB/DBN DEST	11470	155-08 MIA	17/08
47845	Biscayne Bay Daybeacon 12	TRUB/DBN DEST	11465	122-08 MIA	14/08
50435	Grouper Creek Light 54	LT EXT/DBN IMCH	11464	158-07 KWT	47/07
50760	Woods Point Daybeacon 1	TRUB	11472	34/31-08 MIA	05/08
51125	St Lucie Canal Daybeacon 39	TRUB	11428	N/A	23/07
51180	St Lucie Canal Daybeacon 52	MISSING	11428	148-08 MIA	17/08
51355	Clewiston Channel (Rt 1b) Daybeacon 16	TRUB/DBN DEST	11428	146-08 MIA	08/08
52225	Caloosahatchee River Daybeacon 22	TRUB/DBN DEST	11427	43/32-08 STP	03/08
54060	Caloosahatchee River Range Rear Light E	LT EXT	11427	1045-07 STP	42/07
54260	Caloosahatchee River Daybeacon 81	TRUB	11427	1117-07 STP	45/07
55297	Pine Island Sound Daybeacon 11A	TRUB/DBN DEST	11427	402-08 STP	17/08
55625	Captiva Channel Daybeacon 6	TRUB	11427	N/A	44/07
57695	Hatchett Creek Channel Light 5	TRLB/LT EXT	11425	339-08 STP	14/08
60285	Tampa Bay Light 70	LT EXT	11411	95-08 STP	06/08
60875	Boca Ciega Bay Daybeacon 27	TRUB	11411	1121-07 STP	45/07
61085	Treasure Island Daybeacon 12	DBN DEST	11411	N/A	11/08
61540	The Narrows Light 17	TRLB/LT EXT	11411	N/A	09/08

DISCREPANCIES (FEDERAL AIDS) CORRECTED

LLNR	Aid Name	Status	Chart No.	BNM Ref.	LNM St	LNM End
800	Port Everglades Lighted Buoy PE	WATCHING PROPERLY	11470	135-08 MIA	14/08	17/08
1325	Venice Inlet Light 1	WATCHING PROPERLY	11425	390-08 STP	17/08	17/08
1370	Egmont Key Light	WATCHING PROPERLY	11415	401-08 STP	17/08	17/08
1820	Murrells Inlet Daybeacon 16	WATCHING PROPERLY	11534	106-08 CHA	17/08	17/08
2940	Cooper River Range A Rear Light	WATCHING PROPERLY	11524	103-08 CHA	16/08	17/08
4580	Bloody Point Range Lighted Bell Buoy 8	WATCHING PROPERLY	11505	108-08 CHA	17/08	17/08
4585	Bloody Point Range Front Light	WATCHING PROPERLY	11505	107-08 CHA	17/08	17/08
9843	Fort Pierce Inlet Inner Harbor Outbound Range Front Light	WATCHING PROPERLY	11475	152-08 MIA	17/08	17/08
10305	Port Everglades Lighted Buoy PE	WATCHING PROPERLY	11470	135-08 MIA	14/08	17/08
10890	Soldier Key Daybeacon 2	N/A	11465	050-08 MIA	07/08	17/08
17525	Gordon Pass Channel Light 16	WATCHING PROPERLY	11430	N/A	17/08	17/08
21430	Venice Inlet Light 1	WATCHING PROPERLY	11425	390-08 STP	17/08	17/08
22710	Tampa Bay Cut D Channel Range Front Light	WATCHING PROPERLY	11416	392-08 STP	17/08	17/08
23300	Alafia River Light 12	WATCHING PROPERLY	11416	358-08 STP	15/08	17/08
25610	Johns Pass Channel Buoy 5	RESET ON STATION	11411	355-08 STP	15/08	17/08
36975	Buttermilk Sound Daybeacon 216A	WATCHING PROPERLY	11507	102-08 CHA	16/08	17/08
37040	Frederica River Light 221	WATCHING PROPERLY	11507	105-08 CHA	17/08	17/08
37160	Mackay River Light 239	WATCHING PROPERLY	11506	104-08 CHA	17/08	17/08
46380	Lake Worth Creek Light 8	WATCHING PROPERLY	11472	145-08 MIA	16/08	17/08

DISCREPANCIES (PRIVATE AIDS)

LLNR	Aid Name	Status	Chart No.	BNM Ref.	LNM St	LNM End
425	Georgia Fish Haven Buoy L	DBN DMGD	11480	N/A	05/07	
460	Georgia Fish Haven Buoy Ktk	OFF STA	11510	N/A	41/07	
655	Sebastian Inlet North Jetty Light	LT IMCH	11476	N/A	33/04	
735	Jupiter Inlet Jetty Light 2	LT EXT	11472	N/A	27/07	
774	Boca Raton Inlet South Jetty Light 1	LT EXT	11472	337-04 MIA	01/04	
965.3	NOAA Life Support Lighted Buoy Aquarius	OFF STA	11463	019-04 KWT	05/04	
1023.6	Eastern Sambos Buoy D	MISSING	11445	N/A	46/07	
1024.6	Western Sambos Buoy D	MISSING	11446	N/A	46/07	
1430	Redington Shores Fishing Pier North Light	LT EXT	11412	0927-05 STP	28/05	
2665	Cooper River Degaussing East Platform Light	LT EXT	11524	747-00 GD7	33/00	
2670	Cooper River Degaussing West Platform Light	LT EXT	11524	015-00 CHA	02/00	
2815	U South Navy Pier P Light (1)	LT EXT	11524	N/A	28/05	
2865	U.S. Navy Pier B Light	LT EXT	11524	N/A	28/05	
3015	Cooper River Ammunition Pier Light	LT EXT	11527	N/A	28/05	
3115	Amoco South Btg Dolphin Obstruction Light	LT EXT	11527	004-07 SJN	02/07	
3245	Cooper River Mon Sta Obstruction Light E	LT IMCH	11527	N/A	28/05	
3260	South Carolina Gas & Elec North Pier Light	LT EXT	11527	N/A	38/06	
3265	South Carolina Gas & Elec South Pier Light	LT EXT	11527	N/A	38/06	
4355	Baynard Cove Creek Daybeacon 4	DBN DEST	11516	N/A	05/05	
4360	Baynard Cove Creek Daybeacon 6	DBN IMCH	11516	N/A	05/05	
4380	Harbour Town Light 2	LT EXT/DBN DEST	11512	126-07 CHA	20/07	
6027	Cloister Hotel North Obstruction Light	LT EXT	11508	N/A	17/05	

6873	Cumberland Sound Shoal Light E	LT EXT/DBN DMGD	11503	056-08 JAX	09/08
7391.2	Mill Cove Daybeacon 2	DBN DEST	11491	N/A	45/07
7391.6	Mill Cove Daybeacon 6	DBN DMGD	11491	N/A	45/07
7391.7	Mill Cove Daybeacon 7	DBN DMGD	11491	N/A	45/07
7391.8	Mill Cove Daybeacon 8	DBN IMCH	11491	N/A	45/07
7392	Mill Cove Daybeacon 10	DBN DMGD	11491	N/A	45/07
7392.2	Mill Cove Daybeacon 12	DBN DMGD	11491	N/A	45/07
7392.4	Mill Cove Daybeacon 14	DBN IMCH	11491	N/A	45/07
7392.6	Mill Cove Daybeacon 16	DBN IMCH	11491	N/A	45/07
7392.8	Mill Cove Daybeacon 18	LT IMCH	11491	N/A	45/07
7425	Blount Island Wharf Southwest Light	LT IMCH	11491	112-06 JAX	13/06
7430	Blount Island Wharf Northwest Light	LT IMCH	11491	111-06 JAX	13/06
8610	Silver Glen Springs Run Buoy 5	DBN DMGD	11495	N/A	45/07
9765	Sebastian Inlet Channel Daybeacon 8	DBN IMCH	11472	N/A	05/05
9770	Sebastian Inlet Channel Daybeacon 9	DBN DEST	11472	N/A	09/06
9775	Sebastian Inlet Channel Daybeacon 10	DBN IMCH	11472	N/A	05/05
9795	Sebastian Inlet Channel Daybeacon 14	DBN DEST	11472	507-06 MIA	40/06
9880	Banty Saunders Rec Area Daybeacon 8	DBN IMCH	11475	N/A	13/05
11550	Garden Cove Daybeacon 3	DBD DEST	11463	423-05 KWT	44/05
11560	Garden Cove Daybeacon 5	DBN DEST	11463	161-05 KWT	29/05
11565	Garden Cove Daybeacon 6	Status Unreported	11463	N/A	44/05
11570	Garden Cove Daybeacon 7	DBN DEST	11463	N/A	44/05
11575	Garden Cove Daybeacon 8	DBN DMGD	11463	N/A	19/06
11580	Garden Cove Daybeacon 9	DBN DEST	11463	N/A	44/05
11585	Garden Cove Daybeacon 10	DBD DEST	11464	428-05 KWT	38/05
11590	Garden Cove Daybeacon 11	DBD DMGD	11463	429-05 KWT	39/05
11605	Garden Cove Daybeacon 13	DBD DMGD	11464	327-05 KWT	39/05
11615	Garden Cove Daybeacon 15	DBN DMGD	11463	N/A	19/06
11660	Garden Cove Daybeacon 26	DBN DEST	11463	N/A	46/07
11760	Molasses Reef North Obstruction Daybeacon	DBN DEST	11451	N/A	09/06
11765.1	Port Largo Channel Daybeacon 4	DBN DEST	11463	012/329/489 KE	02/05
11765.2	Port Largo Channel Daybeacon 6	DBN DEST	11464	578-05 KWT	52/05
11851	Newport Bay Daybeacon 1	DBN DMGD	11464	488-05 KWT	44/05
11851.5	Newport Bay Daybeacon 6	DBN DEST	11464	485-05 KWT	24/04
11851.6	Newport Bay Daybeacon 7	DBN DMGD	11464	486-05	44/05
11852.2	Newport Bay Daybeacon 15	DBN DEST	11464	N/A	24/04
11917.5	Mariners Club Marina Daybeacon 8	DBD DEST	11463	328-05 KWT	39/05
12020	Blue Water Trailer Vill Daybeacon 3	Status Unreported	11451	N/A	17/07
12501.4	Vaca Cut Daybeacon 8	DBN DEST	11453	140-06 KWT	30/06
12865	Yellow Shark Channel Buoy 17	DBN DEST	11449	N/A	40/06
13035	Shell Key Channel Daybeacon 13	DBN DEST	11449	019-08 KEY	09/08
13195	Indian Key Channel Daybeacon 12	Status Unreported	11449	N/A	40/06
13345	Lignumvitae Channel Daybeacon 15	DBN DMGD	11449	N/A	31/06
13920	Ramrod Key Channel Daybeacon 1	MISSING	11446	N/A	03/06
14067	Summerland Key Daybeacon 6	DBN IMCH	11445	N/A	28/05
14115	Brinton Channel Daybeacon 4	MISSING	11446	N/A	10/08
14230	Upper Sugarloaf Sound Daybeacon 11	MISSING	11446	148-06 KWT	32/06
14310	Cudjoe Key Daybeacon 11	DBD DEST	11446	161-06 KWT	34/06
14450	Tamarac Park Channel Obstruction E Daybeacon	DBN DEST	11446	N/A	46/07
14455	Tamarac Park Channel Obstruction West Daybeacon	DBN DEST	11446	N/A	46/07
14490.1	Stock Island Obstruction Daybeacon A	DBN DMGD	11441	N/A	46/07
14490.2	Stock Island Obstruction Daybeacon B	DBN DMGD	11441	N/A	46/07
14490.5	Stock Island Obstruction Daybeacon E	DBN DEST	11441	N/A	46/07

14690	Key West Oceanside Marina Daybeacon 5	DBN DMGD	11446	021-08 KEY	09/08
14705	Key West Oceanside Marina Daybeacon 9	DBN DMGD	11445	N/A	09/08
14750	Cow Key Channel Daybeacon 15	DBN DMGD	11446	N/A	46/07
14755	Cow Key Channel Daybeacon 16	DBN DMGD	11446	057-08 KWT	16/08
14757	Cow Key Channel Daybeacon 17	DBN DMGD	11445	058-08 KWT	16/08
14766.5	Cow Key Channel Daybeacon 25	DBN DMGD	11446	059-08 KWT	16/08
14768	Cow Key Obstruction Daybeacon 1	DBN DEST	11446	N/A	46/07
14780	Casa Marina Daybeacon 1	DBN DMGD	11446	N/A	45/07
14887	Fort Taylor West Obstruction Light	LT EXT/DBN DEST	11447	N/A	45/07
14887.3	Fort Taylor Southwest Obstruction Daybeacon	DBN DEST	11447	N/A	45/07
14887.5	Fort Taylor Southeast Obstruction Daybeacon	DBN DEST	11447	N/A	45/07
14980.2	Key West Mooring Field Light B	LT IMCH	11447	N/A	39/04
15270	Lake Passage Channel Daybeacon 4	DBN DEST	11441	N/A	02/08
15320	Lake Passage Channel Daybeacon 17	DBD DEST	11441	N/A	40/05
16110	National Park Service Boat Basin South Channel Daybeacon 2	DBN IMCH	11429	1303-04 STP	35/04
16120	National Park Service Boat Basin South Channel Daybeacon 4	DBN IMCH	11429	1304-04 STP	48/03
16135	National Park Service Boat Basin West Channel Daybeacon 1	DBN IMCH	11430	1302-04 STP	35/04
16145	National Park Service Boat Basin West Channel Daybeacon 4	DBN IMCH	11429	1301-04 STP	35/04
16150	National Park Service Boat Basin West Channel Daybeacon 5	DBN IMCH	11429	1300-04 STP	48/03
16160	National Park Service Boat Basin West Channel Daybeacon 7	DBN DEST	11429	1299-04 STP	48/03
16665	Blackwater River Daybeacon 56	DBN DEST	11430	N/A	13/06
16690	Caxambas Bay Daybeacon 3	Status Unreported	11429	N/A	49/07
16750	Caxambas Bay Daybeacon 19	MISSING	11429	300-07 STP	13/07
16905	Caxambas Pass Entrance Light C	DBN DEST	11430	N/A	44/05
17035	Collier Bay Daybeacon 6	DBN DEST	11430	0269-08 STP	13/08
17105	Isles Of Capri Daybeacon 2	DBN IMCH	11430	N/A	48/03
17120	Isles Of Capri Daybeacon 5	DBN DEST	11430	N/A	13/06
17140	Isles Of Capri Daybeacon 9	DBN IMCH	11430	0934-05 STP	13/05
17475	Gordon Pass North Jetty Obstruction Daybeacon	DBD DEST	11430	318-07 STP	13/07
17477	Gordon Pass South Jetty Obstruction Daybeacon B	DBD DMGD	11430	317-07 STP	13/07
17479	Gordon Pass South Jetty Obstruction Daybeacon C	DBD DEST	11430	316-07 STP	13/07
17480	Gordon Pass Channel Obstruction Daybeacon	DBD DMGD	11430	315-07 STP	13/07
17480.01	Gordon Pass North Obstruction Buoy	DBD DMGD	11430	314-07 STP	13/07
17480.02	Gordon Pass South Obstruction Buoy	DBD DEST	11430	313-07 STP	13/07
17650	Naples Yacht Club Daybeacon 1	DBD DEST	11430	309-07 STP	13/07
17660	Naples Yacht Club Daybeacon 3	DBD DEST	11430	310-07 STP	13/07
17667	Naples Yacht Club Daybeacon 5	DBD DEST	11430	311-07 STP	13/07
17667.1	Naples Yacht Club Daybeacon 7	DBD DEST	11430	312-07 STP	13/07
17710	Doctors Pass Daybeacon 1A	MISSING	11430	1160-06 STP	36/06
17760	Doctors Pass Daybeacon 12	MISSING	11430	1161-06 STP	36/06
17775	Wiggins Pass Safe Water Light Wp	DBN DEST	11427	1261/1122-07ST	19/07
17790	Wiggins Pass Daybeacon 4	MISSING	11427	285-07 STP	12/07
17795	Wiggins Pass Daybeacon 6	TRUB/DBN DEST	11427	951/954-07 STP	38/07
17805	Wiggins Pass Daybeacon 10	MISSING	11427	284-07 STP	12/07
17810	Wiggins Pass Daybeacon 11	MISSING	11427	283-07 STP	12/07
18068.3	Port Sanibel Marina Daybeacon 14	DBN DMGD	11472	N/A	45/07
18142.5	Bunche Beach Channel Daybeacon 3	DBD DEST	11427	864-07 STP	33/07

18143	Bunche Beach Channel Daybeacon 7	DBD DEST	11427	STP 863-07	33/07
18143.3	Bunche Beach Channel Daybeacon 9	DBD DEST	11427	862-07 STP	33/07
18745	North Estero Bay Daybeacon 68	DBN DMGD	11427	399-08 STP	17/08
18995.01	Estero Pointe Channel Daybeacon 3	DBN DEST	11427	N/A	02/08
19300	Southern Passage Daybeacon 15	Status Unreported	11427	N/A	51/05
19745	South Estero Bay Daybeacon 92	DBN DEST	11427	1066-07 STP	44/07
20075	Pirate Harbor Daybeacon 9	DBN DEST	11426	N/A	22/07
20095	Pirate Harbor Daybeacon 14	DBN DEST	11426	538-07 STP	22/07
20125	Charlotte Harbor Artificial Reef Southwest Daybeacon	DBD DEST	11426	432-07 STP	18/07
20295	Alligator Creek Daybeacon 20	MISSING	11426	430-07 STP	18/07
20335	Alligator Creek Daybeacon 33	MISSING	11426	431-07 STP	18/07
20355	Upper Myakka River Daybeacon A	DBN IMCH	11426	N/A	44/04
20450	Ponce De Leon Park Channel Light 2	LT IMCH	11426	003-08 STP	44/04
20460	Ponce De Leon Park Channel Daybeacon 6	DBN DEST	11426	N/A	02/05
20525	Isles Channel Daybeacon 7	DBN IMCH	11426	N/A	02/05
20560	Isles Cross Channel Daybeacon 3	DBN DEST	11426	N/A	02/05
21230	Peace River (North Section) Daybeacon 12	DBN DEST	11426	292-08 STP	14/08
21245	Charlotte Harbor Yacht Club Daybeacon 1	DBN IMCH	11426	N/A	08/04
21250	Charlotte Harbor Yacht Club Daybeacon 2	DBN IMCH	11426	N/A	02/05
21255	Charlotte Harbor Yacht Club Daybeacon 3	DBN IMCH	11426	N/A	08/04
21260	Charlotte Harbor Yacht Club Daybeacon 4	DBN IMCH	11426	N/A	02/05
21265	Charlotte Harbor Yacht Club Daybeacon 5	DBN IMCH	11426	N/A	08/04
21270	Charlotte Harbor Yacht Club Daybeacon 6	DBN IMCH	11426	N/A	02/05
21275	Charlotte Harbor Yacht Club Daybeacon 7	DBN IMCH	11426	N/A	02/05
21280	Charlotte Harbor Yacht Club Daybeacon 8	DBN IMCH	11426	N/A	02/05
21285	Charlotte Harbor Yacht Club Daybeacon 9	DBN IMCH	11426	N/A	08/04
21385	Stump Pass Marina Daybeacon 1	DBN DMGD	11425	N/A	46/07
21395	Stump Pass Marina Daybeacon 3	DBN DMGD	11425	535-07 STP	45/05
21400	Stump Pass Marina Daybeacon 4	OFF STA	11425	1670-05 STP	45/05
21405	Stump Pass Marina Daybeacon 5	OFF STA	11425	1671-05 SEC ST	45/05
21410	Stump Pass Marina Daybeacon 6	OFF STA	11425	1672 / 1697 STP	45/05
21415	Stump Pass Marina Light	LT IMCH	11425	N/A	19/03
21456.03	Dona Bay Channel Daybeacon 13	DBN DEST	11425	0874-05 STP	23/05
21456.12	Dona Bay Channel Daybeacon 21	DBN IMCH	11425	0875-05 STP	23/05
21465	Big Sarasota Pass Shoal Daybeacon A	LT EXT	11425	776-07 STP	30/07
21495	Big Sarasota Pass Shoal Daybeacon D	DBN DEST	11425	796-07 STP	30/07
21500.1	Big Sarasota Pass Daybeacon 1	DBN DEST	11425	400-08 STP	17/08
21505	Big Sarasota Pass Daybeacon 9	DBN DEST	11425	679-06 STP	22/06
21570	Big Sarasota Pass Daybeacon 16	DBN DEST	11425	152-08 STP	08/08
21800	Leffis Key Channel Daybeacon 5	DBN IMCH/NUM MSNG/DAMGD	11425	094-07 STP	06/07
21805	Leffis Key Channel Daybeacon 6	DBN DEST	11425	093-07 STP	06/07
21810	Leffis Key Channel Daybeacon 7	DBN IMCH/NUM MSNG/DAMGD	11425	095-07 STP	06/07
21950	Fifty-Ninth Street Boat Ramp Daybeacon 3	DBN DEST	11415	N/A	28/05
22787	North Yacht Basin Daybeacon 4	DBN DMGD	11415	174-08 STP	09/08
22815.5	Macdill Air Force Base Prohibited Area Daybeacon (24)	DBN DEST	11416	N/A	24/03
23035	Big Bend Channel West Range Rear Light	LT EXT	11416	795-07 STP	30/07

23130	Big Bend Channel East Range Front Light	LT EXT	11416	110-07 STP	50/06
23185	Big Bend Pilot Range Rear Light	LT EXT	11416	212-08 MIA	06/08
23795	Weedon Island Channel Entrance Lighted Buoy 1	OFF STA/LT EXT	11416	47/39-08 STP	06/07
23800	Weedon Island Channel Entrance Lighted Buoy 2	MISSING	11416	250-07 STP	11/07
23840	Weedon Island Channel Lighted Buoy 8	LT EXT	11416	0036-08 STP	03/08
23870	Weedon Island Channel Lighted Buoy 14	MISSING	11416	999/1023-07 ST	41/07
23950.5	Old Tampa Bay Pipeline West Light	LT EXT	11416	N/A	13/06
23985	Culbreath Cay Daybeacon 1	DBN DEST	11416	0876-05 STP	13/05
23990	Culbreath Cay Daybeacon 2	DBN DEST	11416	0877-05 STP	13/05
23995	Culbreath Cay Daybeacon 4	DBN DEST	11416	N/A	13/05
24005	Culbreath Cay Daybeacon 6	DBN IMCH	11416	856-04 STP	26/04
24015	Culbreath Cay Daybeacon 8	DBN DEST	11416	857-04 STP	26/04
24040	Bridgeview Channel Daybeacon 1	DBN DEST	11416	439-07 STP	13/05
24045	Bridgeview Channel Daybeacon 2	DBD DEST	11416	440-07 STP	18/07
24050	Bridgeview Channel Daybeacon 3	DBN DMGD	11416	441-07 STP	14/01
24055	Bridgeview Channel Daybeacon 4	DBN IMCH	11416	442-07 STP	12/04
24060	Culbreath Bayou North Daybeacon 1	DBN DEST	11416	N/A	46/07
24065	Culbreath Bayou North Daybeacon 2	DBD DEST	11416	443-07 STP	18/07
24085	Culbreath Bayou North Daybeacon 6	DBN DEST	11416	444-07 STP	18/07
24090	Culbreath Bayou North Daybeacon 8	DBD DEST	11416	445-07 STP	18/07
24125	Culbreath Bayou South Daybeacon 2	MISSING	11416	446-07 STP	18/07
24155	Culbreath Bayou South Daybeacon 8	DBN IMCH/FADED	11416	447-07 STP	18/07
24175	Dana Shores Daybeacon 1	DBN DEST	11416	N/A	46/07
24195	Dana Shores Daybeacon 6	DBN DEST	11416	1461-06 STP	47/06
24215	Dana Shores Daybeacon 11	MISSING	11416	448-07 STP	18/07
24250	Dana Shores Daybeacon 22	DBN DMGD	11416	1462-06 STP	47/06
24260	Bay Crest Daybeacon 2	DBN DMGD	11416	N/A	46/07
24265	Bay Crest Daybeacon 3	MISSING	11416	405-07 STP	47/06
24270	Bay Crest Daybeacon 4	DBN DMGD	11416	1457-060 STP	47/06
24280	Bay Crest Daybeacon 6	DBN DMGD	11416	1458-06	47/06
24282	Bay Crest Daybeacon 7	DBN DMGD	11416	438-07 STP	18/07
24340	Cabbagehead Bayou Daybeacon 12	DBN DEST	11416	1204-06 STP	38/06
24525	Bahia Beach Daybeacon 9	DBD DEST	11416	054-07 STP	04/07
24575	Bahia Beach Marina Daybeacon 4	MISSING	11416	053-07 STP	04/07
24620	Apollo Beach Jetty Obstruction Daybeacon	DBN DEST	11416	N/A	45/06
24625	Apollo Beach Daybeacon 4	DBN DMGD	11416	1463-06 STP	47/06
24653	Symphony Isles Danger Daybeacon	DBN IMCH	11416	1464-06 STP	47/06
24770	Little Bayou Approach Daybeacon 5	MISSING	11416	860-07 STP	33/07
25065	Bayou Grande Channel Daybeacon 9	DBN DEST	11416	814-07 STP	32/07
25125	Bayou Grande Channel Daybeacon 25	DBN DEST	11416	382-07 STP	16/07
25250	Bayou Grande Channel Daybeacon 52	MISSING	11416	045-07 STP	03/07
25430	Bunces Pass Daybeacon 12	HAZ NAV/DBN DEST	11415	1333-06 STP	43/06
25510.1	Dent Channel Daybeacon 2	DBN DEST	11411	794-07 STP	18/06
25510.1	Dent Channel Daybeacon 2	MISSING	11411	169-08 STP	09/08
25515	Dent'S Channel Daybeacon 3	TRLB	11415	1200-05 STP	29/05
25555	South Dent Channel Daybeacon 7	DBN DEST	11411	N/A	24/03
25600.01	Treasure Island North Terminal Groin Obstruction Light	LT EXT	11411	1089-06 STP	33/06
25655	Clearwater Beach Lighted Buoy A	OFF STA	11412	N/A	11/05
25660	Clearwater Beach Lighted Buoy B	OFF STA	11412	N/A	11/05
25665	Clearwater Beach Lighted Buoy C	OFF STA	11412	0936-05 STP	11/05
25670	Clearwater Beach Lighted Buoy D	OFF STA	11412	0935-05 STP	11/05
25675	Clearwater Beach Lighted Buoy E	OFF STA	11412	N/A	11/05

25985	Hurricane Pass Daybeacon 3	MISSING/DBN DMGD	11411	181-08 STP	09/08
26025	Hurricane Pass Daybeacon 13	DBD DEST	11411	392-07 STP	12/07
26960	Signal Cove Daybeacon 5	DBN DEST	11409	878-07 STP	34/07
27025	Hudson Creek Daybeacon 4	DBN DMGD	11409	N/A	11/08
27030	Hudson Creek Daybeacon 5	DBN DEST	11409	877/733-07 STP	28/07
27080	Hudson Creek Daybeacon 18	DBN DEST	11409	658-07 STP	18/06
27105	Nan'S Approach Light	LT EXT/DBN DMGD	11409	665/390-07 STP	16/07
27130	Hudson Beach Park Daybeacon 5	DBD DEST	11409	732-07 STP	28/07
27140	Hudson Beach Park Daybeacon 7	DBD DEST	11409	391-07 STP	16/07
27190	Sea Pines Channel Daybeacon 14	DBN DEST	11409	N/A	13/06
28715	Homosassa River Daybeacon 2	MISSING	11409	1177-07 STP	40/06
28725	Homosassa River Daybeacon 4	DBN DEST	11409	199-07 STP	09/07
28773	Crystal Bay Scallop Platform Light	LT IMCH	11409	1559-06 STP	51/06
28915	Salt River Daybeacon 2	DBN IMCH	11409	N/A	13/06
28920	Salt River Daybeacon 3	DBN IMCH	11409	N/A	13/06
28925	Salt River Daybeacon 5	DBN IMCH	11409	N/A	13/06
28930	Salt River Daybeacon 6	DBN IMCH	11409	N/A	13/06
28935	Salt River Daybeacon 7	DBN IMCH	11409	N/A	13/06
28940	Salt River Daybeacon 8	DBN DMGD/DBN IMCH	11409	0418-06 STP	13/06
28945	Salt River Daybeacon 9	DBN IMCH	11409	N/A	13/06
28950	Salt River Daybeacon 10A	DBN IMCH	11409	N/A	13/06
28953.4	Crystal River Daybeacon 29	MISSING	11409	359-08 STP	16/08
28960	Florida Power Corporation Channel Light 3	LT EXT	11408	1328-06 STP	42/06
28965	Florida Power Corporation Channel Light 4	DBN IMCH	11408	1284-06 STP	38/06
28975	Florida Power Corporation Channel Light 6	LT IMCH	11408	1285-06 STP	42/06
28985	Florida Power Corporation Channel Light 8	LT IMCH	11408	1286-06 STP	42/06
28990	Florida Power Corporation Channel Light 9	LT IMCH	11408	1287-06 STP	42/06
28995	Florida Power Corporation Channel Light 10	LT EXT	11408	1288-06 STP	38/06
29000	Florida Power Corporation Channel Light 12	LT IMCH	11408	1289-06 STP	42/06
29005	Florida Power Corporation Channel Light 13	LT IMCH	11408	1290-06 STP	42/06
29015	Florida Power Corporation Channel Light 16	LT IMCH	11408	1292-06 STP	42/06
29020	Florida Power Corporation Channel Light 17	LT IMCH	11408	1293-06 STP	42/06
29025	Florida Power Corporation Channel Light 18	LT IMCH	11408	406-07 STP	42/06
29030	Florida Power Corporation Channel Light 20	LT EXT	11408	407-07 STP	17/07
29035	Florida Power Corporation Channel Light 21	LT EXT	11408	408-07 STP	17/07
29040	Florida Power Corporation Channel Light 23	LT IMCH	11408	1297-06 STP	42/06
29045	Florida Power Corporation Channel Light 25	LT IMCH	11408	1298-06 STP	42/06
29050	Florida Power Corporation Channel Light 26	LT IMCH	11408	1299-06 STP	42/06
29055	Florida Power Corporation Channel Light 27	LT IMCH	11408	1300-06 STP	42/06
29060	Florida Power Corporation Channel Light 28	LT EXT	11408	1147-07 STP	47/07
29065	Florida Power Corporation Channel Light 29	LT IMCH	11408	1301-06 STP	42/06
29070	Florida Power Corporation Channel Light 31	LT IMCH	11408	1302-06 STP	42/06

29085	Florida Power Corporation Channel Light 34	LT EXT	11408	1304-06 STP	42/06
29090	Florida Power Corporation Channel Light 35	LT IMCH	11408	1305-06 STP	42/06
29095	Florida Power Corporation Channel Light 36	LT IMCH	11408	1306-06 STP	42/06
29100	Florida Power Corporation Channel Light 37	LT EXT	11408	409-07 STP	38/06
29120	Florida Power Corporation Channel Light 41	LT IMCH	11408	N/A	42/06
29135	Florida Power Corporation Channel Light 44	LT IMCH	11408	1310-06 STP	42/06
29140	Florida Power Corporation Channel Light 45	LT EXT	11408	1311-06 STP	38/06
29160	Florida Power Corporation Channel Light 50	LT IMCH	11408	1560-06 STP	51/06
29165	Florida Power Corporation Channel Light 51	LT IMCH	11408	1561-06 STP	51/06
29170	Florida Power Corporation Channel Light 52	LT IMCH	11408	1562-06 STP	51/06
30085	Suwannee River Alligator Pass Light 2	DBN DEST	11408	N/A	17/06
30170	Suwannee River Mcgriff Pass Daybeacon 1	LT EXT	11408	N/A	13/06
30175	Suwannee River Mcgriff Pass Daybeacon 2	Status Unreported	11408	1144/305-07 ST	13/07
30180	Suwannee River Mcgriff Pass Daybeacon 3	DBN DMGD	11408	1145-07 STP	47/07
30200	Suwannee River Mcgriff Pass Daybeacon 7	Status Unreported	11408	1146/599-07 ST	24/07
30245	Suwannee River Mcgriff Pass Daybeacon 28	DBN IMCH	11408	306-07 STP	13/07
30280	Salt Creek Daybeacon 5	Status Unreported	11408	N/A	13/06
30315	Salt Creek Daybeacon 17	HAZ NAV/DBN DEST	11408	1373-05 STP	35/05
30330	Salt Creek Daybeacon 21	DBN DMGD	11408	N/A	13/06
30690	Cedar Island Daybeacon 1	DBN DMGD	11407	506-01 STP	28/01
30695	Cedar Island Daybeacon 2	DBN DMGD	11407	507-01 STP	28/01
30825	Tmt Outer Dolphin Obstruction Light	LT EXT	25670	231-07 GAN	36/07
30825	Tmt Outer Dolphin Obstruction Light	LT EXT	25670	319-05 SJN	47/05
30830	Tmt Middle Dolphin Obstruction Light	LT EXT	25670	320-05 SJN	47/05
31230	Sea Lovers Pier Buoy West Light	LT EXT	25667	N/A	41/04
31335.1	Puerto Del Ray North Channel Lighted Buoy 6	LT EXT	25663	231-06 SJN	37/06
31527	Caballo Blanco Light	LT EXT	25664	348-06 SJN	02/07
31527	Caballo Blanco Light	LT EXT	25664	053-08 GAN	08/08
31535	Sonda De Vieques Obstruction Lighted Buoy Lae	MISSING	25664	N/A	16/97
31895	Aguirre Power Plant Lighted Buoy 2	TRUB	25687	322-07 JAX	48/07
31915	Aguirre Power Plant Lighted Buoy 6	LT EXT	25687	096-06 SJN	16/06
32420	Redhook Bay Buoy 1	BUOY DMGD	25647	365-02 GAN	45/02
32425	Redhook Bay Buoy 2	OFF STA	25647	N/A	45/04
32430	Redhook Bay Buoy 3	DBN DMGD	25647	N/A	19/06
32440	Redhook Bay Junction Buoy P	OFF STA	25647	N/A	45/04
32450	Redhook Bay South Channel Buoy 2	OFF STA	25647	N/A	45/04
32455	Redhook Bay Buoy 5	MISSING	25647	N/A	19/06
32460	Redhook Bay Buoy 6	MISSING	25647	N/A	45/04
32572	Airport Runway Exclusion Area North B	MISSING	25649	N/A	07/08
32573	Airport Runway Exclusion Area South B	MISSING	25649	N/A	07/08
32605	West Indian Dock Light	LT EXT	25649	N/A	10/07
32780	Cruz Bay Buoy 1	MISSING	25647	359-02 GAN	45/02
32805	Cruz Creek Channel Buoy 1C	MISSING	25647	360-02 GAN	45/02
32810	Cruz Creek Channel Buoy 2C	MISSING	25647	N/A	19/06

32950	Christiansted Schooner Channel Lighted Buoy 5	LT EXT	25645	339-07 SJN	01/08
33145	Lime Tree Bay Channel Lighted Buoy 2	OFF STA	25641	215-07 SJN	35/07
33200	Lime Tree Bay Port Basin Light 15	LT EXT	25641	067-06 SJN	13/06
33230	Krause Lagoon Channel Lighted Buoy 4A	LT EXT	25641	N/A	08/07
33315	Krause Lagoon Cross Channel Lighted Buoy 1	MISSING	25641	065-06 SJN	13/06
34745	Johns Island Dock Obstruction Light	LT EXT/DBN DEST	11518	N/A	27/04
35410	Marsh Harbor Marina Daybeacon 1	DBN DEST	11518	N/A	41/07
35425	Marsh Harbor Marina Daybeacon 4	DBD DMGD	11518	N/A	51/04
35585	Trenchards Inlet Tide Gauge Daybeacon	DBN IMCH	11516	N/A	03/04
35590	Station Creek West Tide Gauge Daybeacon	DBN DEST	11516	N/A	03/04
35630	Ribaut Island Dock Light G	LT EXT	11507	N/A	04/05
36232	Delegal Creek Channel Buoy 3	MISSING	11507	N/A	28/05
36233	Delegal Creek Channel Buoy 4	MISSING	11507	N/A	28/05
36235	Delegal Creek Channel Buoy 5	BUOY DMGD	11507	N/A	28/05
37803	Cumberland Sound Shoal Light E	LT EXT/DBN DMGD	11503	056-08 JAX	09/08
38843.6	Vilano Marina North Channel Daybeacon 4	DBN IMCH	11485	N/A	06/04
38925	Salt Run Daybeacon 3	DBN DEST	11485	234-07 JAX	37/07
40255	Matthews Marina Daybeacon 2	DBN DMGD	11485	N/A	45/07
40270	Matthews Marina Daybeacon 5	DBN DMGD	11485	N/A	45/07
40285	Seven Seas Marina Daybeacon 2	DBN DMGD	11485	N/A	46/07
41575	Sykes Creek Daybeacon 5	DBN DMGD	11485	N/A	40/07
41620	Sykes Creek Daybeacon 19	DBN DMGD	11485	N/A	40/07
42135	Indian Cove Marina Daybeacon 2	DBN DMGD	11485	N/A	40/07
42290	Diamond 99 Marina Daybeacon 1	DBN DEST	11485	N/A	14/06
42300	Diamond 99 Marina Daybeacon 3	DBN DEST	11472	N/A	14/06
42310	Diamond 99 Marina Daybeacon 5	DBN DEST	11472	N/A	14/06
42490.1	Manatee Cove Marina Daybeacon 1	DBN DEST	11476	N/A	31/04
42490.3	Manatee Cove Marina Daybeacon 3	DBN IMCH	11476	N/A	02/05
42491	Manatee Cove Marina Range Front Light	LT EXT	11476	N/A	19/04
42492	Manatee Cove Marina Range Rear Light	LT EXT/DBN DEST	11476	N/A	44/04
42830	Central Avenue Entrance Channel Light 2	LT EXT	11476	480-05 JAX	49/05
43030	Kelly Park Channel Light 1	LT EXT	11476	N/A	16/04
43045	Kelly Park Channel Daybeacon 4	DBN DEST	11476	N/A	13/06
43055	Kelly Park Channel Daybeacon 7	DBN DEST	11476	N/A	13/06
43115	Intracoastal Marina Channel Daybeacon 1	DBN IMCH	11476	N/A	07/05
43120	Intracoastal Marina Channel Daybeacon 2	DBN IMCH	11476	N/A	07/05
43125	Intracoastal Marina Channel Daybeacon 3	DBN DEST	11476	N/A	14/05
43135	Intracoastal Marina Channel Daybeacon 5	DBN IMCH	11476	N/A	14/05
43140	Intracoastal Marina Channel Daybeacon 6	DBN IMCH	11476	N/A	14/05
43145	Intracoastal Marina Channel Daybeacon 7	DBN IMCH	11476	N/A	14/05
43160	Intracoastal Marina Channel Daybeacon 10	DBN IMCH	11476	N/A	14/05
43340	Tucker Channel Range Front Light	LT EXT/DBN DEST	11472	N/A	41/07
43345	Tucker Channel Range Rear Light	LT EXT/DBN DEST	11472	N/A	41/07
43350	Tucker Channel Daybeacon 1	DBN DMGD	11472	N/A	19/04
43355	Tucker Channel Daybeacon 2	DBN DMGD	11472	N/A	19/04
43575	Coconut Point Daybeacon 1	DBN IMCH	11472	N/A	44/04
43580	Coconut Point Daybeacon 2	DBN IMCH	11472	N/A	44/04
43585	Coconut Point Daybeacon 3	DBN IMCH	11472	N/A	11/05

43590	Coconut Point Daybeacon 4	DBN IMCH	11472	N/A	11/05
43595	Coconut Point Daybeacon 5	DBN IMCH	11472	N/A	11/05
43600	Coconut Point Daybeacon 6	DBN IMCH	11472	N/A	44/04
43685.2	Channel 68 Marina Daybeacon 2	DBN DEST	11472	N/A	10/03
44005	Grand Harbor Marina Daybeacon 8	DBN IMCH	11472	N/A	28/05
44025	Grand Harbor Marina Daybeacon 12	DBN IMCH	11472	N/A	28/05
44035	Grand Harbor Marina Daybeacon 14	DBN DEST	11472	N/A	28/05
44045	Grand Harbor Marina Daybeacon 16	DBN IMCH	11472	N/A	28/05
44065	Bermuda Bay Daybeacon 1	DBN DEST/DBN IMCH	11472	N/A	08/04
44070	Bermuda Bay Daybeacon 2	DBN IMCH	11472	N/A	28/05
44075	Bermuda Bay Daybeacon 3	DBN IMCH	11472	N/A	28/05
44080	Bermuda Bay Daybeacon 4	DBN DEST	11472	N/A	29/05
44085	Bermuda Bay Daybeacon 5	DBN IMCH	11472	N/A	10/03
44090	Bermuda Bay Daybeacon 6	DBN DEST	11472	N/A	28/05
44095	Bermuda Bay Daybeacon 7	DBN IMCH	11472	N/A	28/05
44105	Bermuda Bay Daybeacon 9	DBN IMCH	11472	N/A	28/05
44110	Bermuda Bay Daybeacon 10	DBN DEST/DBN IMCH	11472	N/A	08/04
44115	Bermuda Bay Daybeacon 11	DBN IMCH	11472	N/A	10/03
44120	Bermuda Bay Daybeacon 12	DBN IMCH	11472	N/A	08/04
44600	Moorings Channel Daybeacon 1	DBN DEST	11472	N/A	17/07
44610	Moorings Channel Daybeacon 3	DBN DMGD	11472	N/A	17/07
44615	Moorings Channel Daybeacon 4	DBN IMCH	11472	N/A	17/07
44625	Moorings Channel Daybeacon 6	DBN IMCH	11472	N/A	17/07
44635	Moorings Channel Daybeacon 8	DBN DEST	11472	N/A	17/07
44655	Moorings Channel Daybeacon 14	DBN DEST	11472	N/A	46/07
44660	Moorings Channel Daybeacon 16	DBN DMGD	11472	N/A	17/07
44845	Linkport Channel Daybeacon 1	DBN DEST	11472	N/A	36/06
44848	Linkport Channel Daybeacon 2	DBN DEST	11472	N/A	36/06
44850	Linkport Channel Daybeacon 3	DBN DEST	11472	N/A	36/06
44855	Linkport Channel Daybeacon 4	DBN DEST	11472	N/A	38/06
44860	Linkport Channel Daybeacon 5	DBN DEST	11472	N/A	38/06
44870	Linkport Channel Daybeacon 7	MISSING	11472	N/A	38/06
44875	Linkport Channel Daybeacon 8	DBN DEST	11472	N/A	38/06
44980	Village Marina Daybeacon 1	DBN DEST	11476	N/A	27/04
45540	Fairwinds Cove Daybeacon 7	DBN IMCH	11476	N/A	15/04
45560	Fairwinds Cove Daybeacon 12	DBN IMCH	11476	N/A	15/04
45605	Rigels Cove Channel Daybeacon 5	DBN IMCH	11472	N/A	15/04
45980	Miles Grant Daybeacon 2	DBN IMCH	11476	N/A	21/04
46005	St Lucie Inlet State Park Channel Daybeacon 1	DBD DEST	11476	646-05 MIA	45/05
46010	St Lucie Inlet State Park Channel Daybeacon 2	DBD DEST	11476	647-05 MIA	45/05
46337	Loxahatchee River North Fork Daybeacon 4	DBN DMGD	11472	N/A	17/07
46440	Old Port Cove Daybeacon 1	DBN DEST	11472	443/433-07 MIA	40/07
46625	New Port Cove Marine Ctr Daybeacon 3	DBN DEST	11472	N/A	28/05
46630	New Port Cove Marine Ctr Daybeacon 4	DBN DEST	11472	N/A	28/05
46640	New Port Cove Marine Ctr Daybeacon 6	DBN DEST	11472	N/A	28/05
46650	New Port Cove Marine Ctr Daybeacon 8	DBN DEST	11472	N/A	51/05
46795	Rybovich Spencer Ctr Channel Daybeacon 4	DBN DEST	11472	752-07 STP	29/07
46855	West Palm Beach Daybeacon 1	DBN IMCH	11476	N/A	28/05
46865	West Palm Beach Daybeacon 3	DBN DEST	11476	N/A	28/05
47640	Golden Gates Marina South Obstruction Light	LT IMCH	11467	N/A	42/07
47645	Williams Island Daybeacon 1	DBN DEST	11467	286-03 MIA	22/03
47795	Bakers Haulover Smallboat Channel Daybeacon 2	DBN DMGD	11467	N/A	19/07

47850	Keystone Point Channel Daybeacon 4	DBN DEST	11467	307-06 MIA	24/06
47880	Keystone Point Channel Daybeacon 16	DBN DEST	11467	308-06 MIA	24/06
48105	Sunset Harbour Channel Daybeacon 6	DBN DEST	11468	365-07 MIA	30/07
48135	Sunset Harbour Channel Daybeacon 15	MISSING	11468	293-07 MIA	24/07
48250	Miami Shores Channel Daybeacon 8	MISSING	11467	075-06 MIA	05/06
48445	Miami Herald Channel Buoy 1	MISSING	11468	N/A	38/07
48450	Miami Herald Channel Buoy 2	MISSING	11467	N/A	38/07
48455	Miami Herald Channel Buoy 3	MISSING	11468	N/A	38/07
48460	Miami Herald Channel Buoy 5	MISSING	11468	N/A	38/07
48465	Miami Herald Channel Buoy 6	MISSING	11467	N/A	38/07
48500	Claughton Island North Obstruction Daybeacon	DBN DMGD	11465	330-06 MIA	27/06
48505	Claughton Island Middle Obstruction Daybeacon	DBN DEST	11465	637-04 MIA	51/04
48570	Villa Regina Daybeacon 5	DBD DEST	11465	126-07 MIA	11/07
48570	Villa Regina Daybeacon 5	DBN DEST	11465	587-03 MIA	49/03
48620	Deering Channel Daybeacon 3	DBN DEST	11465	437-06 MIA	38/06
48640	Deering Channel Daybeacon 7	MISSING	11465	438-06 MIA	38/06
48780	Crandon Park Marina Channel Light 1	LT EXT	11465	095-08 MIA	12/08
48845	Crandon Park Marina Channel Light 14	DBN DEST	11467	540-6 652-6 MI	43/06
48880	Dinner Key Seaplane Channel Daybeacon 1	DBN DEST	11465	N/A	47/07
48980	Dinner Key Marina South Channel Light 1	LT IMCH	11465	N/A	38/07
49010	Dinner Key Marina South Channel Daybeacon 7	DBN DEST	11467	461-07 MIA	42/07
49040	Dinner Key Marina South Channel Light 13	LT EXT	11465	406-06 MIA	35/06
49085	Key Biscayne Yacht Club Light 4	LT IMCH	11465	597-02 MIA	49/02
49160	Four Way Channel Directional Daybeacon	DBN DEST	11465	N/A	39/97
49190	Four Way Channel Daybeacon 8	DBN DEST	11465	065-03 MIA	05/03
49225	Hughes Cove East Obstruction Daybeacon	DBN DMGD	11465	N/A	24/98
49245	Entrada Channel Daybeacon 3	DBN DEST	11465	340-04 MIA	29/04
49340	Gables Estates Light 2	DBN DEST	11465	N/A	17/06
49345	Gables Estates Daybeacon 2A	DBN DEST	11465	N/A	17/06
49350	Gables Estates Daybeacon 3	DBN DEST	11465	N/A	17/06
49360	Gables Estates Daybeacon 5	DBN DEST	11465	N/A	17/06
49678.5	Boca Chita Channel Buoy 4	MISSING	11465	N/A	42/06
49679.5	Boca Chita Channel Buoy 6	MISSING	11465	N/A	42/06
49790	Black Point Channel Daybeacon 12	DBN IMCH	11464	N/A	42/06
49805	Black Point Channel Daybeacon 15	DBN DEST	11464	N/A	42/06
49815	Black Point Channel Daybeacon 17	MISSING	11464	206-07 MIA	42/06
49840	Black Point Channel Daybeacon 23	DBN DEST	11464	205-07 MIA	15/07
49865	Convoy Point Light 1	LT EXT	11467	014-07 MIA	47/06
49870	Convoy Point Light 2	LT EXT	11467	015-07 MIA	47/06
49955	Turkey Point Channel Light 2	LT EXT	11464	549-007 MIA	15/06
49955	Turkey Point Channel Light 2	LT EXT/DBN DEST	11464	182-06 MIA	35/05
49975	Turkey Point Channel Buoy 4A	MISSING	11464	039-07 MIA	05/07
49975	Turkey Point Channel Buoy 4A	MISSING	11464	461-05 MIA	38/05
49995	Turkey Point Channel Buoy 8	LT EXT	11464	520-06 MIA	41/06
50070	Turkey Point Channel Buoy 23	DBN DMGD	11464	154-07 MIA	13/07
50160	Grayvik Daybeacon 1	DBN IMCH	11451	N/A	28/05
50170	Grayvik Daybeacon 3	DBN IMCH	11451	N/A	17/06
50175	Grayvik Daybeacon 4	DBN DEST	11451	N/A	17/06
50295	The Moorings Daybeacon 2	DBN DEST	11451	N/A	19/06
50300	The Moorings Daybeacon 3	DBN DEST	11451	N/A	19/06
50305	The Moorings Daybeacon 4	DBN DEST	11451	N/A	19/06

50505.05	Hammer Point Harbor Obstruction Daybeacon C	MISSING	11463	N/A	09/06
50505.06	Hammer Point Harbor Obstruction Daybeacon D	MISSING	11463	N/A	09/06
50505.07	Hammer Point Harbor Obstruction Daybeacon E	DBN DEST	11463	N/A	13/07
50506.02	Hammer Point Harbor Obstruction Daybeacon J	DBN DMGD	11463	N/A	09/06
50506.03	Hammer Point Harbor Obstruction Daybeacon K	DBN DEST	11463	N/A	13/07
50506.06	Hammer Point Harbor Obstruction Daybeacon N	DBN DEST	11451	N/A	13/07
50506.07	Hammer Point Harbor Obstruction Daybeacon O	DBN DEST	11451	N/A	13/07
50506.08	Hammer Point Harbor Obstruction Daybeacon P	MISSING	11463	N/A	09/06
50506.09	Hammer Point Harbor Obstruction Daybeacon Q	MISSING	11463	N/A	09/06
50905	St. Lucie River (North Fork) Daybeacon 11	DBN IMCH	11428	N/A	04/03
50915	St. Lucie River (North Fork) Daybeacon 13	DBN DMGD/DBD DEST	11428	723-05 MIA	47/05
50920	St. Lucie River (North Fork) Daybeacon 14	DBN DEST	11428	013-07 MIA	03/08
50955	St. Lucie River (North Fork) Daybeacon 25	DBN DEST	11428	N/A	13/06
51975	Buckhead Ridge Canal Light BR	LT IMCH	11428	N/A	53/02
52385	Admiralty Yacht Club Daybeacon 8	DBN IMCH	11428	1716-04 STP	43/04
52420	Indian Creek Daybeacon 1	DBN IMCH	11428	1717-04 STP	43/04
52435	Indian Creek Daybeacon 4	DBN IMCH	11428	N/A	39/04
52440	Indian Creek Daybeacon 5	DBN IMCH	11428	N/A	39/04
52445	Indian Creek Daybeacon 6	DBN IMCH	11428	N/A	39/04
52450	Indian Creek Daybeacon 7	DBN IMCH	11428	1718-04 STP	39/04
52455	Indian Creek Daybeacon 8	DBN IMCH	11428	N/A	39/04
52460	Indian Creek Daybeacon 9	DBN IMCH	11428	N/A	39/04
52465	Indian Creek Daybeacon 10	DBN IMCH	11428	N/A	39/04
52660	Marinatown Daybeacon 2	DBN DEST	11428	0559-06 STP	42/04
52685	Marinatown Daybeacon 7	DBN IMCH	11428	N/A	39/04
52715	Marinatown Daybeacon 13	DBN DMGD	11428	N/A	41/07
52740	Marinatown Daybeacon 18	DBN IMCH	11428	N/A	41/07
52745	Marinatown Daybeacon 19	DBN IMCH/DBD DEST	11428	0564-06 STP	39/04
52765	Marinatown Daybeacon 23	DBD DEST	11428	662-07 STP	26/07
52775	Marinatown Daybeacon 25	DBN DEST	11428	663-07 STP	39/04
52821.6	Caloosa Isle Marina Daybeacon 4	DBN IMCH/NUM MSNG/DAMGD	11427	654-07 STP	26/07
52822	Caloosa Isle Marina Daybeacon 6	DBN IMCH/NUM MSNG/DAMGD	11427	655-07 STP	26/07
52823.6	Caloosa Isle Marina Daybeacon 14	DBN IMCH/NUM MSNG/DAMGD	11427	656-07 STP	26/07
52824	Caloosa Isle Marina Daybeacon 16	DBN IMCH/NUM MSNG/DAMGD	11427	657-07 STP	26/07
52910	Paradise Yacht Club Daybeacon 1	DBN DEST	11428	N/A	45/07
52955	Paradise Yacht Club Daybeacon 10	MISSING	11428	N/A	45/07
53515	Mcgregor Isles Daybeacon 5	DBD DEST	11427	664-07 STP	18/06
53565	Harney Point Rim Channel Daybeacon 8	DBN DEST	11427	N/A	27/04
53590	Harney Point Rim Channel Daybeacon 14	DBN DMGD	11427	N/A	14/06
53640	Harney Point Rim Channel Daybeacon 27	DBD DMGD	11427	854-07 STP	33/07
53730	Landings Marina Daybeacon 1	DBN DEST	11428	N/A	41/07
53735	Landings Marina Daybeacon 2	DBN DEST	11428	673-07 STP	26/07
53975	Gulf Harbour Yacht Club Light 2	LT EXT	11472	394-07 STP	16/07
54135	Redfish Point Rim Channel Light 20	LT EXT	11427	N/A	14/06
54195	Peppertree Pointe E Obstruction Daybeacon	DBD DMGD	11427	859/926-06 STP	27/06

54210	Peppertree Pointe Daybeacon 3	DBD DEST	11427	857-07 STP	14/06
54220	Peppertree Pointe Daybeacon 5	DBD DEST	11427	856-07 STP	14/06
54225	Peppertree Pointe Daybeacon 6	DBD DMGD	11427	0923-06 STP	27/06
54230	Peppertree Pointe Daybeacon 7	DBD DMGD	11427	0922-06 STP	27/06
54235	Peppertree Pointe Daybeacon 8	DBD DMGD	11427	0921-06 STP	27/06
54240	Peppertree Pointe Daybeacon 9	DBD DMGD	11427	0920-06 STP	27/06
54250	Peppertree Pointe Daybeacon 12	MISSING	11427	855/639-07 STP	25/07
54365	Bimini Entrance Channel Daybeacon 26	MISSING	11427	641-07 STP	25/07
54370	Bimini Entrance Channel Daybeacon 28	MISSING	11427	640-07 STP	25/07
54440	Redfish Cove Channel Daybeacon 17	MISSING	11427	643-07 STP	25/07
54530	Saint Charles Harbour Daybeacon 9	DBN DEST	11427	393-07 STP	16/07
54560	Saint Charles Harbour Daybeacon 15	DBD DMGD	11427	0939-06 STP	27/06
54590	Saint Charles Harbour Daybeacon 21	DBD DMGD	11427	0937-06 STP	27/06
54600	Saint Charles Harbour Daybeacon 23	DBD DEST	11427	851-07 STP	33/07
54650	Cape Coral Southwest Channel Daybeacon 4	DBN DEST	11427	0068-08 STP	05/08
54675	Cape Coral Southwest Channel Junction Daybeacon	MISSING	11427	642-07 STP	25/07
54700	Shell Point Village Daybeacon 1	DBD DEST	11427	671-07 STP	26/07
54730	Shell Point Village Daybeacon 5	DBN IMCH	11427	N/A	28/05
54930	Manatee Bay Property Channel Daybeacon 1	DBN IMCH/STRUCT DEFAC	11427	449-07 STP	27/06
55245	Matlacha Pass Daybeacon 87	DBN DEST	11426	154-08 STP	08/08
55310	Paradise Canal Daybeacon 1	LT IMCH	11427	669-07 STP	26/07
55315	Paradise Canal Daybeacon 2	DBD DEST	11427	668-07 STP	14/06
55320	Paradise Canal Daybeacon 3	DBD DEST	11427	667-07 STP	14/06
55325	Paradise Canal Daybeacon 4	DBD DEST	11427	666-07 STP	14/06
55815	South Seas Plantation Daybeacon 8	DBD DEST	11427	0935-06 STP	27/06
55820	South Seas Plantation Daybeacon 9	MISSING	11427	672-07 STP	16/07
55880	South Seas Plantation Daybeacon 21	DBD DEST	11427	861-07 STP	10/06
55915	Safety Harbor Channel Light 1	DBD DEST	11426	433-07 STP	18/07
55925	Safety Harbor Channel Daybeacon 3	DBN DEST	11426	434-07 STP	18/07
55930	Safety Harbor Channel Daybeacon 4	MISSING	11426	N/A	18/07
55935	Safety Harbor Channel Daybeacon 9	DBN DEST	11426	436-07 STP	18/07
55940	Safety Harbor Channel Daybeacon 11	DBD DEST	11426	437-07 STP	18/07
56230	Wilson Cut Channel Daybeacon 1	DBN DEST	11427	N/A	41/07
56340	Wilson Cut Channel Daybeacon 23	DBN DEST	11427	N/A	41/07
56355	Wilson Cut Channel Daybeacon 26	DBN DEST	11427	N/A	41/07
56560	Gasparilla Island Daybeacon 1	DBD DEST	11425	743-07 STP	29/07
56565	Gasparilla Island Daybeacon 2	DBD DEST	11425	744-07 STP	29/07
56570	Gasparilla Island Daybeacon 3	DBD DEST	11425	745-07 STP	29/07
56575	Gasparilla Island Daybeacon 4	DBD DEST	11425	746-07 STP	29/07
56580	Gasparilla Island Daybeacon 5	DBD DEST	11425	747/194-07 STP	09/07
56585	Gasparilla Island Daybeacon 6	DBD DEST	11425	748-07 STP	29/07
56590	Gasparilla Island Daybeacon 7	DBD DEST	11425	749-07 STP	29/07
56595	Gasparilla Island Daybeacon 9	DBD DEST	11425	750-07 STP	29/07
56600	Gasparilla Island Daybeacon 11	DBN DEST	11425	751-07 STP	29/07
56655	Fishery Restaurant Channel Daybeacon 1	DBD DEST	11425	737-07 STP	29/07
56660	Fishery Restaurant Channel Daybeacon 2	DBN IMCH/FADED	11425	738-07 STP	29/07
56665	Fishery Restaurant Channel Daybeacon 3	DBD DEST	11425	739-07 STP	29/07
56670	Fishery Restaurant Channel Daybeacon 5	DBD DEST	11425	740-07 STP	29/07
56675	Fishery Restaurant Channel Daybeacon 7	DBD DEST	11425	741-07 STP	29/07
56680	Fishery Restaurant Channel Daybeacon 8	DBN IMCH	11425	N/A	41/07

56777	Placida Pier Northwest Obstruction Light	LT IMCH	11425	N/A	41/07
56778	Placida Pier Northeast Obstruction Light	LT EXT	11425	990-02 STP	33/02
56778.5	Placida Pier Southeast Obstruction Light	LT EXT	11425	990-02 STP	33/02
56795	Uncle Henry'S Marina Daybeacon 4	DBN DEST	11425	N/A	45/07
56810	Uncle Henry'S Marina Daybeacon 8	DBN DEST	11425	STP 753-07 STP	29/07
56890	Uncle Henry'S Marina Daybeacon 24	DBN DEST	11425	754-07 STP	29/07
56920	Uncle Henry'S Marina Daybeacon 30	DBN DMGD	11425	N/A	45/07
56925	Uncle Henry'S Marina Daybeacon 31	DBD DEST	11425	756-07 STP	29/07
56945	Uncle Henry'S Marina Daybeacon 35	DBN DMGD	11425	N/A	45/07
57295	Daughtrey Landing Daybeacon 3	DBN DEST	11425	724-06 STP	21/05
57358.3	Gottfried Creek Daybeacon 22	DBN DEST	11425	0968-06 STP	17/04
57359.1	Englewood Channel Daybeacon 2	DBN DMGD	11425	N/A	46/07
57359.7	Englewood Channel Daybeacon 12	DBN IMCH	11425	N/A	21/03
57440	Indian Mound Pk Daybeacon 2	DBN DEST	11425	400-07 STP	28/05
57470	Royal Palm Marina Buoy 1	BUOY DMGD	11425	0943-06 STP	21/04
57475	Royal Palm Marina Buoy 2	MISSING	11425	395-07 STP	28/05
57480	Royal Palm Marina Buoy 4	MISSING	11425	396-07 STP	28/05
57485	Royal Palm Marina Buoy 5	MISSING	11425	397-07 STP	28/05
57490	Royal Palm Marina Buoy 6	BUOY DMGD	11425	0945-06 STP	28/05
57495	Royal Palm Marina Buoy 8	MISSING	11425	399-07 STP	28/05
57500	Royal Palm Marina Buoy 10	ADRIFT	11425	0967-06 STP	28/05
57505	Royal Palm Marina Buoy 11	MISSING	11425	0966-06 STP	28/05
57510	Royal Palm Marina Buoy 12	BUOY DMGD	11425	0965-06 STP	28/05
57515	Royal Palm Marina Buoy 13	BUOY DMGD	11425	0964-06 STP	28/05
57520	Royal Palm Marina Buoy 14	BUOY DMGD	11425	0963-06 STP	28/05
57525	Royal Palm Marina Buoy 15	MISSING	11425	0962-06 STP	28/05
57530	Royal Palm Marina Buoy 16	MISSING	11425	397-07 STP	28/05
57535	Royal Palm Marina Buoy 18	BUOY DMGD	11425	0961-06 STP	28/05
57570	Lemon Bay Daybeacon 3	DBD DMGD	11425	536-07 STP	22/06
57619.5	Forked Creek Southeast Obstruction Daybeacon	DBN DEST	11425	715-06 STP	28/05
57825	Lyons Bay Daybeacon 10	DBN DEST	11425	201-08 STP	11/08
58205.4	Midnight Pass Daybeacon 15	DBN DEST	11425	1893-05 STP	51/05
58530	Sarasota Bay Artificial Reef Daybeacon E	DBN DEST	11425	N/A	10/04
58540	Tony Saprito Fishing Pier South Light	LT EXT	11425	N/A	28/05
58545	Tony Saprito Fishing Pier North Light	LT EXT	11425	N/A	28/05
58645	Bay Isles South Channel Daybeacon 2	DBN IMCH	11425	N/A	22/06
58655	Bay Isles South Channel Daybeacon 6	DBN IMCH	11425	0847-05 STP	23/05
58665	Bay Isles South Channel Daybeacon 10	DBN IMCH	11425	N/A	22/06
58667.1	Bay Isles Perimeter Channel Daybeacon 6	DBN DEST	11425	518-07 STP	22/07
58667.25	Bay Isles Perimeter Channel Daybeacon 9	DBN IMCH	11425	N/A	46/07
58667.35	Bay Isles Perimeter Channel Daybeacon 12	DBN DMGD	11425	699-06 STP	28/05
58667.6	Bay Isles Perimeter Channel Daybeacon 20	DBN IMCH/STRUCT DEFAC	11425	697-06 STP	22/06
58667.65	Bay Isles Perimeter Channel Daybeacon 22	DBN IMCH	11425	698-06 STP	22/06
58680	Longboat Key Moorings Light 1	LT EXT	11425	0576-06 STP	18/06
58685	Longboat Key Moorings Light 2	MISSING	11425	0578 / 706-06	28/05
58690	Longboat Key Moorings Daybeacon 3	DBN DEST	11425	N/A	17/04
58705	Longboat Key Moorings Daybeacon 6	DBN DEST	11425	N/A	22/07
58710	Longboat Key Moorings Daybeacon 7	DBD DEST	11425	705-06 STP	22/06
58715	Longboat Key Moorings Daybeacon 8	DBD DEST	11425	516-07 STP	22/06
58725	Longboat Key Moorings Daybeacon 10	DBN IMCH	11425	N/A	18/05
58730	Longboat Key Moorings Daybeacon 11	DBN IMCH	11425	N/A	18/05

58740	Sarasota Bay Obstruction Daybeacon	DBN IMCH	11425	521-07 STP	39/04
58765	Bayshore Garden Daybeacon 5	Status Unreported	11425	1083-07 STP	22/07
58785	Bayshore Garden Daybeacon 9	DBN DMGD	11425	N/A	22/07
58845	Buttonwood Harbor Channel Daybeacon A	DBN DEST	11425	NA	46/07
58855	Buttonwood Harbor Light 2	LT EXT	11425	N/A	46/07
59030	Longboat Harbor Channel Daybeacon 11	DBD DMGD	11425	696-06 STP	22/06
59110	Longboat Harbor Channel Daybeacon 30	DBN DMGD	11425	N/A	46/07
59145	Longboat Harbor North Marina Daybeacon 6	DBD DEST	11425	729-06 STP	22/06
59245	Buccaneer Inn Daybeacon 10	DBN DEST	11425	698-06 STP	22/06
59265	Buccaneer Inn Daybeacon 14	DBD DMGD	11425	688-06 STP	22/06
59270	Buccaneer Inn Daybeacon 16	DBD DMGD	11425	687-06 STP	22/06
59280	Buccaneer Inn Daybeacon 18	DBD DEST	11425	0982-06 STP	21/05
59285	Buccaneer Inn Daybeacon 20	DBN IMCH	11425	N/A	46/07
59305	Buccaneer Inn Daybeacon 26	DBN DMGD	11425	0981-06 STP	23/05
59310	Buccaneer Inn Daybeacon 28	DBD DMGD	11425	529-07 STP	16/07
59380	Coral Shores Channel Daybeacon 4	DBN IMCH/NUM MSNG/DAMGD	11425	096-07 STP	06/07
59430	Coral Shores Channel Daybeacon 14	DBN IMCH/NUM MSNG/DAMGD	11425	098-07 STP	06/07
59440	Coral Shores Channel Daybeacon 16	DBN IMCH/NUM MSNG/DAMGD	11425	099-07 STP	06/07
59475	Coral Shores Channel Daybeacon 23	DBN IMCH/NUM MSNG/DAMGD	11425	100-07 STP	06/07
59485	Coral Shores Channel Daybeacon 25	DBN IMCH	11425	101-07 STP	28/05
59510	Coral Shores Channel Daybeacon 30	DBN IMCH	11425	0975-06 STP	27/06
59540	Mt Vernon & Coral Shores Daybeacon 2N	DBN IMCH	11425	N/A	28/05
59650	Cove Sound Moorings Daybeacon 1	DBD DEST	11425	0915-06 STP	27/06
59655	Cove Sound Moorings Daybeacon 2	DBD DEST	11425	0916-06 STP	27/06
59657	Cove Sound Moorings Channel Daybeacon 3	DBD DEST	11425	0941-06 STP	27/06
59657.5	Cove Sound Moorings Channel Daybeacon 4	DBD DEST	11425	0942-06 STP	27/06
59660	Palma Sola Bay Channel Daybeacon 7	DBN IMCH	11425	N/A	18/03
59730	Perico Bayou Channel Daybeacon 12	DBN IMCH	11415	N/A	19/04
59745	Perico Bayou Channel Daybeacon 14A	DBN DMGD	11415	N/A	19/04
59815	Palma Sola Bay Channel Daybeacon 9	DBN DEST	11425	0283-06 STP	09/06
60010	Kingfish Boat Ramp Daybeacon 2	DBD DMGD	11415	0416-06 STP	14/06
60020	Kingfish Boat Ramp Daybeacon 5	DBN DMGD	11415	0599-06 STP	14/06
60025	Kingfish Boat Ramp Daybeacon 6	DBD DEST	11415	1562-04 834-06	39/04
60030	Kingfish Boat Ramp Daybeacon 7	DBD DMGD	11415	0598-06 STP	14/06
60035	Kingfish Boat Ramp Daybeacon 8	DBD DEST	11425	0412-06 STP	14/06
60040	Kingfish Boat Ramp Daybeacon 9	DBN IMCH	11415	N/A	45/07
60045	Kingfish Boat Ramp Daybeacon 10	DBD DEST	11415	0413-06 STP	14/06
60050	Kingfish Boat Ramp Daybeacon 11	DBD DEST	11415	0414-06 STP	14/06
60055	Kingfish Boat Ramp Daybeacon 12	DBN IMCH	11415	N/A	21/03
60070	Perico Harbor Marina Daybeacon 3	LT IMCH	11415	N/A	45/07
60130	Perico Harbor Marina Daybeacon 15	LT IMCH	11415	N/A	45/07
60190	Anna Maria Channel Daybeacon 1	DBD DMGD	11415	0539-06 STP	17/06
60245	Anna Maria Channel Daybeacon 12	DBN IMCH	11415	0910-06 STP	05/05
60250	Anna Maria Channel Shoal Daybeacon A	DBN IMCH	11415	N/A	05/05
60640	Bayway Isles Channel Daybeacon 5	DBN IMCH	11411	0940-05 STP	13/05
60670	Bayway Isles Channel Daybeacon 14	DBN IMCH	11411	N/A	13/05
60755	Pasadena Yacht Club Channel Daybeacon 1	DBN DMGD	11411	N/A	46/07
61125	Jungle Estates Daybeacon 1	DBN DMGD	11411	1142-07 STP	47/07
61165	Jungle Beach Daybeacon 1	DBD DMGD	11411	1278-06 STP	42/06
61190	Jungle Beach Daybeacon 6	DBN DEST	11411	1279-06 STP	42/06
61285	Bay Pines Marina Daybeacon 21	MISSING	11411	N/A	10/07
61290	Bay Pines Marina Daybeacon 23	DBN DMGD	11411	N/A	46/07

61950	Caladesi Island Channel Daybeacon 11	DBN DMGD		138-08 STP	07/08
62245	Tarpon Cove Daybeacon 20	DBN DMGD	11411	N/A	17/06
	Ribaut Island Dock Light A	LT EXT	11507	N/A	04/05
	Ribaut Island Dock Light C	LT EXT	11507	N/A	04/05
	Upper Cooper River Daybeacon 19	DBN DEST	11527	186-05 CHA	23/05

DISCREPANCIES (PRIVATE AIDS) CORRECTED

LLNR	Aid Name	Status	Chart No.	BNM Ref.	LNM St	LNM End
------	----------	--------	-----------	----------	--------	---------

None

PLATFORM DISCREPANCIES

Name	Status	Position	BNM Ref.	LNM St	LNM End
------	--------	----------	----------	--------	---------

None

PLATFORM DISCREPANCIES CORRECTED

Name	Status	Position	BNM Ref.	LNM St	LNM End
------	--------	----------	----------	--------	---------

None

SECTION III - TEMPORARY CHANGES and TEMPORARY CHANGES CORRECTED

This section contains temporary changes and corrections to Aids to Navigation for this edition. When charted aids are temporarily relocated for dredging, testing, evaluation, or marking an obstruction, a temporary correction shall be listed in Section IV giving the new position.

TEMPORARY CHANGES

LLNR	Aid Name	Status	Chart No.	BNM Ref.	LNM St	LNM End
40530	Ponce De Leon Cut Daybeacon 6	DISCONTINUED FOR DREDGING	11485	N/A	15/08	
59345	Siesta Key-Tampa Bay Buoy 39	RELOCATED FOR DREDGING	11425	928-07 STP	37/07	

TEMPORARY CHANGES CORRECTED

LLNR	Aid Name	Status	Chart No.	BNM Ref.	LNM St	LNM End
------	----------	--------	-----------	----------	--------	---------

None

PLATFORM TEMPORARY CHANGES

Name	Status	Position	BNM Ref.	LNM St	LNM End
------	--------	----------	----------	--------	---------

None

PLATFORM TEMPORARY CHANGES CORRECTED

Name	Status	Position	BNM Ref.	LNM St	LNM End
------	--------	----------	----------	--------	---------

None

CHANGE	Depth Legend - Port Sutton Channel to: 9 FT MAY 2007; 9 FT MAY 2007 (NOS NW-15388)	27-54-14.000N	082-24-33.700W
CHANGE	Tabulation - TAMPA BAY CHANNEL DEPTHS http://ocsddata.ncd.noaa.gov/nm/SupportImage.asp?ItemID=160150 ; none (NOS NW-15387)	NOS 27-46-37.000N	082-41-16.000W
11429	22nd Ed. 01-NOV-05 Last LNM: 07/08 NAD 83		17/08
	ChartTitle: Chatham River to Clam Pass;Naples Bay;Everglades Harbor		
	CHART FL-CHATHAM RIVER TO CLAM PASS. Page/Side: N/A		
(Temp) RELOCATE	Gordon Pass Channel Daybeacon 7A	CGD07 from 26-05-35.342N to 26-05-35.288N	081-47-57.539W 081-47-57.266W
11430	26th Ed. 01-NOV-05 Last LNM: 07/08 NAD 83		17/08
	ChartTitle: Lostmans River to Wiggins Pass		
	CHART FL-LOSTMANS RIVER TO WIGGINS PASS. Page/Side: N/A		
(Temp) RELOCATE	Gordon Pass Channel Daybeacon 7A	CGD07 from 26-05-35.342N to 26-05-35.288N	081-47-57.539W 081-47-57.266W
11451	33rd Ed. 01-SEP-07 Last LNM: 15/08 NAD 83		17/08
	ChartTitle: FOLIO SMALL-CRAFT CHART Miami to Marathon and Florida Bay		
	CHART FL- MIAMI TO MARATHON AND FLORIDA BAY. Page/Side: N/A		
(Temp) RELOCATE	Soldier Key Daybeacon 2 (TR) Lighted Buoy, FI Q R	CGD07 from 25-35-46.572N to 25-35-46.404N	080-07-33.444W 080-07-33.403W
11462	24th Ed. 16-MAR-02 Last LNM: 15/08 NAD 83		17/08
	ChartTitle: Fowey Rocks to Alligator Reef		
	Main Panel 351 FOWEY ROCKS TO ALLIGATOR REEF. Page/Side: N/A		
(Temp) RELOCATE	Soldier Key Daybeacon 2 (TR) Lighted Buoy, FI Q R	CGD07 from 25-35-46.572N to 25-35-46.404N	080-07-33.444W 080-07-33.403W
11465	38th Ed. 01-NOV-07 Last LNM: 13/08 NAD 83		17/08
	ChartTitle: Intracoastal Waterway Miami to Elliot Key		
	Main Panel 310 INTRACOASTAL WATERWAY MIAMI TO ELLIOTT KEY. Page/Side: N/A		
(Temp) RELOCATE	Soldier Key Daybeacon 2 (TR) Lighted Buoy, FI Q R	CGD07 from 25-35-46.572N to 25-35-46.404N	080-07-33.444W 080-07-33.403W
11466	37th Ed. 01-AUG-05 Last LNM: 13/08 NAD 83		17/08
	ChartTitle: Jupiter Inlet to Fowey Rocks;Lake Worth Inlet		
	CHART FL-JUPITER INLET TO FOWEY ROCKS. Page/Side: N/A		
(Temp) RELOCATE	Soldier Key Daybeacon 2 (TR) Lighted Buoy, FI Q R	CGD07 from 25-35-46.572N to 25-35-46.404N	080-07-33.444W 080-07-33.403W
11472	33rd Ed. 01-SEP-07 Last LNM: 16/08 NAD 83		17/08
	ChartTitle: Intracoastal Waterway Palm Shores to West Palm Beach;Loxahatchee River		
	Main Panel 291 PALM SHORES TO WEST PALM BEACH FLORIDA KK-LL. Page/Side: A		
ADD	Sounding in Feet with label: Rep (2008); 3 Rep (2008) (NOS NW-15564)	NOS 27-58-21.040N	080-31-56.550W
11505	3rd Ed. 01-AUG-06 Last LNM: 16/08 NAD 83		17/08
	ChartTitle: Savannah River Approach		
	Main Panel 2900 SAVANNAH RIVER APPROACH. Page/Side: N/A		
CHANGE	Tabulation - Savannah River Channel http://ocsddata.ncd.noaa.gov/nm/SupportImage.asp?ItemID=159877 ; NONE (NOS NW-15604)	NOS 31-47-10.000N	080-45-06.000W

11507 33rd Ed. 01-NOV-06 Last LNM: 10/08 NAD 83 17/08

ChartTitle: Intracoastal Waterway Beaufort River to St. Simons Sound

CHART SC - GA - BEAUFORT RIVER TO ST SIMONS SOUND. Page/Side: N/A

(Temp) RELOCATE Wilmington River Daybeacon 21

CGD07
from 32-04-23.608N 081-00-50.633W
to 32-04-23.765N 081-00-55.245W

11512 61st Ed. 01-OCT-06 Last LNM: 16/08 NAD 83 17/08

ChartTitle: Savannah River and Wassaw Sound

Main Panel 231 SAVANNAH RIVER AND WASSAW SOUND. Page/Side: N/A

(Temp) RELOCATE Wilmington River Daybeacon 21

CGD07
from 32-04-23.608N 081-00-50.633W
to 32-04-23.765N 081-00-55.245W
NOS
32-02-22.000N 081-08-56.000W

CHANGE Tabulation - Savannah River Channel
<http://ocsddata.ncd.noaa.gov/nm/SupportImage.asp?ItemID=159878>;
NONE (NOS NW-15604)

11514 29th Ed. 01-MAR-07 Last LNM: 04/08 NAD 83 17/08

ChartTitle: Savannah River Savannah to Brier Creek

Main Panel 232 SAVANNAH RIVER SAVANNAH TO MOODYS CUT . Page/Side: A

CHANGE Tabulation - Savannah River Channel
<http://ocsddata.ncd.noaa.gov/nm/SupportImage.asp?ItemID=159876>;
NONE (NOS NW-15604)

NOS
32-07-27.000N 081-04-45.000W

11523 24th Ed. 01-APR-08 Last LNM: 07/08 NAD 83 17/08

ChartTitle: Charleston Harbor Entrance

Main Panel 214 CHARLESTON HARBOR ENTRANCE. Page/Side: N/A

NEW EDITION Scale 1: 20,000; New edition (24 ed, 4/1/2008) due to numerous Notice to Mariner changes and hydrographic changes. This NOAA chart is now available in both the Print-on Demand and digital raster formats. See <http://nauticalcharts.noaa.gov/mcd/dole.htm> for details. The corresponding traditional paper chart will be available in two to eight weeks.

NOS
-- --

SECTION V - ADVANCE NOTICES

This section contains advance notice of approved projects, changes to aids to navigation, or upcoming temporary changes such as dredging, etc. Mariners are advised to use caution while transiting these areas.

SUMMARY OF ADVANCED APPROVED PROJECTS

<u>Approved Project(s)</u>	<u>Project Date</u>	<u>Ref. LNM</u>
None		

Advance Notice(s)

FLORIDA-INTRACOASTAL WATERWAY- HILLSBORO INLET: Aid to be changed.

The following changes will be made to the aids to navigation system in the ICW at the Hillsboro Drainage Canal.

Hillsboro Drainage Canal Daybeacon 2 (LLNR 47170): will be permanently discontinued.

The work is schedule to be completed the weeks of 05 May 2008.

Ref: LNM 16/08

Chart 11467

LNM: 14/08

SECTION VI - PROPOSED CHANGES

Periodically, the Coast Guard evaluates its system of aids to navigation to determine whether the conditions for which the aids to navigation were established have changed. When changes occur, the feasibility of improving, relocating, replacing, or discontinuing aids are considered. This section contains notice(s) of non-approved, proposed projects open for comment. SPECIAL NOTE: Mariners are requested to respond in writing to the District office unless otherwise noted (see banner page for address).

PROPOSED WATERWAY PROJECTS OPEN FOR PUBLIC COMMENT

Proposed Project(s)

Closing

Docket No.

Ref. LNM

None

Proposed Change Notice(s)

None

SECTION VII - GENERAL

This section contains information of general concern to the Mariners. Mariners are advised to use caution while transiting these areas.

WEST INDIES - PUERTO RICO - NORTH COAST - SAN JUAN HARBOR: Hazard to Navigation.

The Coast Guard has advised that a 50ft white sailing vessel is aground in approximate position 18-26.582N 066-07.46W roughly 30 yards NW of Catano Ferry Terminal in San Juan Harbor.

All mariners are advised to use caution while transiting this area.

Ref: LNM 50/07 through 16/08

Chart 25670

LNM: 50/07

WEST INDIES-PUERTO RICO-SOUTH COAST-BAHIA DE GUAYANILLA AND BAHIA DE TALLABOA: Whale Sightings.

Whale sightings reported in the vicinity of Bahía de Guayanilla, Puerto Rico. Vessels are advised to use caution while transiting the area. Report future sightings to the U.S. Coast Guard via VHF-FM Channel 16 (Marine Radio) or (787) 289-2041 for further information.

Charts: 25677 25681

LNM: 17/08

WEST INDIES-PUERTO RICO-EASTCOAST-ISLA de CULEBRA: Unexploded Ordnance Disposal Operations.

Demolition of unexploded ordnance- the usace has contracted Ellis Environment Group to dispose of unexploded ordnance in the waters surrounding Isla de Culebra. The project is scheduled for completion in 2012. The following areas have been identified as demolition sites 1. Cayo Lobo in AP 18-19'27"N 65-22'36"W; 2. Cayo del Agua in AP 18-18'41"N 65-20'51"W; 3. Alcarraza 18-21'40"N 65-22'09"W; 4. Los Gemeios in AP 18-21'30"N 65-21'41"W; 5. Bahía de Marejada in AP 18-19'45"N 65-17'55"W; 6. Cayo Botella in AP 18-19'30"N 65-14'26"W; 7. Isla Cuebrita 18-19'11"N 65-14'02"W; 8. Cayos Geniqui in AP 18'20'20"N 65-13'54"W; 9. Cayo Tiburon in AP 18'20'42"N 65-14'18"W; 10. Cerro Balcon in AP 18-18'51"N 65-16'12"W. Vessels are cautioned to maintain a distance of 1NM radius from the above mention positions during demolition operations. Days and times of operations will be broadcast VHF-FM Channel 22A.

For further information contact USCG on Channel 16 or 787-289-2041.

Ref: LNM 06/07 through 16/08

Charts: 25663 25664 25667

LNM: 06/07

WEST INDIES-PUERTO RICO-ISLA de VIEQUES-NORTH/EAST/SOUTH COAST: Unexploded Ordnance Disposal Operations.

Unexploded Ordnance Disposal Operations are being conducted with estimated completion date of 2010. Daily operations will take place from 0600 to 1800 at the north, east, and southern positions of Isla de Vieques. Vessels are cautioned not to enter an area encompassed by the following coordinates: Starting north of Vieques from shore at Point 1 (one) in approximate position 18-08'42N 065-19'W, then north approximately 1NM at Point 2 (two) in approximate position 18-09'N 065-19'W, then east approximately 4NM to Point 3 (three) at approximate position 18-09'N 065-14'54"W, then south approximately 4NM at Point 4 (four) at approximate position 18-06'18"N 065-14'54"W, then west approximately 4NM to Point 5 (five) in approximate position 18-06'18N 065-19'W and end north on shore at approximate position 18-07'30"N 065-19'00W. Vessels are cautioned not to enter above mentioned area during ongoing operations. For further information contact U.S. Navy, Roosevelt roads, Ceiba, PR at (787) 865-4152 ext 460.

Ref: LNM 07/06 through 16/08

Charts: 25663 25664 25667

LNM: 07/06

SEACOAST-FLORIDA-CUMBERLAND SOUND-FERNANDINA HARBOR TO KINGS BAY-ST MARYS ENTRANCE: Hazard to Navigation. (Updated 07/18/07)

The Coast Guard has advised that a 73ft Shrimp Vessel has sunk in approximate position 30-45-04.200N 081-06-12.000W in 53 feet of water. All mariners are advised to be on the lookout for floating debris from sunken vessel, and transit the area with caution.

Ref: LNM 02/07 through 16/08

Chart 11502

LNM: 02/07

SEACOAST-FLORIDA-STRAITS OF FLORIDA-FOWEY ROCKS - HILLSBORO INLET TO BIMINI ISLANDS: Offshore Buoy Deployment. (UPDATED AS OF 12/27/07)

Florida Atlantic University, Center of Excellence in Ocean Energy Technology (CEOET), Dania Beach, Florida, has deployed/installed one (1) Acoustic Doppler Current Profiler (ADCP) buoy offshore Hollywood, Florida.

SEACOAST-FLORIDA-STRAITS OF FLORIDA-FOWEY ROCKS - HILLSBORO INLET TO BIMINI ISLANDS: Offshore Buoy Deployment. (UPDATED AS OF 12/27/07)

The approximate positions of the ADCP buoy are:

26 deg 1.5N 079 deg 50.25W in 325 meters of water

The 325 m ADCP buoy measures 45" in diameter and will be suspended approximately 8 meters from the ocean floor. The 325 m buoy is connected to a 4 meter wire cable to an acoustic release and a steel clump anchor weighing approximately 3000 lbs.

Both ADCP buoys will be recovered by September 1, 2008 by firing the acoustic release. Both steel clump anchors will be abandoned in place. For further information please contact Ms Shirley Ravenna at (954) 924-7173.

Ref: LNM 50/07 through 16/08

Chart 11466

LNM: 50/07

SOUTH CAROLINA-CHARLESTON HARBOR: Acrobatic Air Show.

During the month of May 2008 the South Carolina Maritime Heritage Foundation will sponsor the Charleston Harbor Fest 2008. The Charleston Harbor Fest will highlight this event with an acrobatic Air Show. On May 17th and 18th 2008, the aerial performances will take place both days from 11:15 a.m. - 12 p.m. and from 2 p.m. - 3 p.m. To promote the safety of participants and spectators during this event, The Coast Guard is establishing a temporary safety zone on the waters of the Cooper River, Charleston, South Carolina. The safety zone includes all waters located within an imaginary box using the following coordinates: (all coordinates referenced use Chart 11524, 49th ED, April 2006.)

32° 47.45- N, 079° 54.32 W 32° 47.06- N, 079° 54.31W

32° 47.07- N, 079° 54.55 W 32° 47.46- N, 079° 54.57W

No vessels or persons may enter, anchor, moor, or transit the regulated area without permission of the Captain of the Port Charleston, or designated representative. Any questions about the Coast Guard requirements or if you would like to receive additional updates on the day of the events, please contact the Patrol Commander on VHF 16 or Sector Charleston's 24x7 operations center via phone at (843) 724-7616.

Ref: LNM 15/08 through 16/08

Chart 11524

LNM: 15/08

GEORGIA - INTRACOASTAL WATERWAY - ST SIMONS SOUND TO TOLOMATO RIVER - CUMBERLAND SOUND: Notice of Interest to Mariners.

Due to the limited commercial use of the Atlantic Intracoastal Waterway between Port Royal Sound, South Carolina (Mile 552) and Cumberland Sound, Georgia (Mile 713), the Savannah District will not receive funds to maintain the waterway to the authorized depths. The District will monitor the conditions of the waterway and publish quarterly condition reports.

Mariners are to use extreme caution when transiting the waterway until further notice.

Ref: LNM 48/03 through 16/08

Chart 11489

LNM: 48/03

FLORIDA - JACKSONVILLE - ST JOHNS RIVER: Necessary Speeds to Maintain Safe Steerageway.

The Captain of Port Jacksonville requests all mariners transiting the areas of Brills Cut Range and the Upper Range in the vicinity of the Dames Point Bridge proceed at speeds necessary to maintain safe steerageway.

This is necessary due to marine construction. Reduction of wakes will reduce risk to workers and minimize lost productivity during forming of the bulkhead and the concrete application in the dock construction area from Martin Marietta to the cruise terminal.

For further information please contact Mr. Gary McDonald - W.G. Yates construction, Project Manager, Jaxport Dames Point Container Terminal Project (904) 696-8579.

Ref: LNM 45/07 through 16/08

Charts: 11491 11492

LNM: 45/07

FLORIDA - ST JOHNS RIVER DUNNS CREEK TO LAKE DEXTER: Hazard to Navigation.

The Captain of the Port advises all mariners in the vicinity North of the Astor Bridge that a power line has been reported lower than the charted 50ft height.

All marine traffic should take caution when passing through this portion of the St. Johns River.

Ref: LNM 50/07 through 16/08

Chart 11495

LNM: 50/07

FLORIDA-INTRACOASTAL WATERWAY-OKEECHOBEE WATERWAY-ST LUCIE TO CALOOSAHATCHEE RIVER-KISSIMMEE RIVER: Marine Construction.

The South Florida Water management District has commenced construction on a new weir in approximate position 27-13.202N, 080-57.025W on the C38 Canal on the Kissimmee River.

There will be turbidity curtains in place 1000 yards northwest of construction and 2000 yards southwest of construction. These turbidity curtains completely cross the canal and close the canal to all navigation. Construction will continue for seven (7) months.

All mariners are requested to use their slowest safe speed and proceed with caution while transiting in the area. For further information please contact LTJG Chris Svencer at 305-535-4550.

Ref: LNM 12 and 14/08

Chart 11428

LNM: 13/08

FLORIDA-MIAMI TO ELLIOT KEY: Hazard to Navigation.

The Coast Guard has received a report of a submerged crane in the vicinity of the Marine Stadium near Biscayne Bay, Miami, Florida.

The approximately position: 25 deg 44.69N 080 deg 10.14W. All mariners are advised to exercise caution while transiting the area.

Ref: LNM 51/06 through 16/08

Chart 11465

LNM: 51/06

FLORIDA-TAMPA BAY: Submerged Pipeline Instalation.

Gulfstream Natural Gas Company has commence installation of a surmerged gas pipeline in Tampa Bay. The project will be ongoing until completion on or about June 30, 2007.

There will be approxiamately 18 working vessels, barges and tugs working through out the bay. All work activities will be conducted outside of the channels. The fleet staging area is the Temporary Explosive Anchorage in the vicinity of the Old Port Tampa. All vessels can be contacted via marine radio VFH Channels 13 and 16.

For further information please contact Sector St Petersburg at (813) 228-2191 ext 8126.

Ref: LNM 10/08 through 16/08

Chart 11415

LNM: 10/08

FLORIDA- TAMPA BAY ENTRANCE- TAMPA BAY: Marine Advisory.

In order to minimize the risk of collision with deep draft vessels and improve the safe transit of shallow draft vessels within the Tampa Bay and its approaches, the Coast Guard Captain of Port Tampa, Florida issues the following advisory: A NOAA survey number H-11344 conducted in July, 2004 reported that a water depth of 10 feet extends approximately 500 feet outward from both sides of the main ship channel in the waters west of the Sunshine Skyway Bridge adjacent to Egmont Channel, Mullet Key Channel, and Tampa Bay Cut "A" except in the vicinity of the Sunshine Skyway Bridge where existing security zones prohibit navigation closer than 100 feet around all bridge supports, dolphins, and rocky outcroppings from piers 88 to 135. Continuing east of the Sunshine Skyway Bridge, the advisory includes the waters adjacent to Point Pinellas Channel, Tampa Bay Cuts -A-, "B", "C", "D", "E", "F", "G", "J", "J-2", West of "K" Cut, Gadsen Point Cut, and Hillsborough Bay Cuts "A", and "C". All vessels drafting less than 10 feet may consider utilizing waters that have been identified by the 2004 NOAA survey parallel to, and within 500 feet of, the main ship channel when identifying the safest navigational course for transiting Tampa Bay and its approaches.

Ref: LNM 14/05 through 16/08

Chart 11415

LNM: 14/05

FLORIDA-CHARLOTTE HARBOR TO TAMPA BAY-NEW PASS ENTRANCE CHANNEL: Uncharted Buoys.

The New Pass Entrance Channel is subject to continual change. Buoys are not charted because they are frequently shifted in position. The controlling depth was 8 feet for a width of 100 feet from LIGHT 7 (LLNR 21620) to the S R Bridge; thence 6 feet for a width of 100 feet to the Intracoastal Waterway and 8 feet to the basin; 7 feet in the basin except for shoaling to 3 1/2 feet in the southeast section of the basin.

BUOYS NOT CHARTED IN NEW PASS ENTRANCE CHANNEL

- Buoy 1 (LLNR 21590), - Buoy 2 (LLNR 21595), - Buoy 3A (LLNR 21600), - Buoy 5 (LLNR 21605) and - Buoy 5A (LLNR 21610)

Mariners are advised to use caution while transiting this area and view Local Notice to Mariners editions for shoaling information and repositioning of aids to navigation.

Ref: LNM 52/04 through 16/08

Chart 11425

LNM: 52/04

FLORIDA-SOMBERO KEY TO SAND KEY- WHALE HARBOR: Hazard to Navigation.

The Coast Guard has received a report of a metal pile sticking out of the water approximately one and a half feet between Whale Harbor Daybeacon 3 (LLNR 12700) and Whale Harbor Daybeacon 4 (LLNR 12705).

FLORIDA-SOMBERO KEY TO SAND KEY- WHALE HARBOR: Hazard to Navigation.

All mariners are advised to transit the area with caution.

Ref: LNM 30/05 through 16/08

Chart 11442

LNM: 30/05

**FLORIDA-ESTERO BAY TO LEMON BAY, INCLUDING CHARLOTTE HARBOR-BOCA GRANDE PASS-CAPTIVA ISLAND:
Dredging/Beach Renourishment Operations. (Updated as of 18 April 2008)**

Weeks Marine, Inc. , will commence a beach renourishment project on or about March 30, 2008, in Boca Grande Pass, Florida and offshore of Captiva Island, Florida.

The staging area (see enclosure number 7) will be set-up on or about March 22, 2008, and the equipment (mono buoy, submerged pipeline, and booster barge) will be placed between March 23, 2008 and March 30, 2008.

Between March 30, 2008 and April 7, 2008, the hopper dredge R.N.WEEKS will dredge beach fill material from Borrow Area VI. The dredge material will be discharged into the submerged dredge pipeline at the mono buoy. On or about May 30, 2008, the project crew will remove all equipment from the site.

All equipment will have all required lights for night operations. Once underway, operations will be continue twenty-four (24) hours per day, seven (7) days per week basis. The dredge can be contacted on marine radio VHF-FM Channels 13 and 16. For further information [please contact Mr. Charles Balentine at (985) 875-2525 or crbalentine@weeksmarine.com.

Chart 11426

LNM: 17/08

FLORIDA-OKEECHOBEE WATERWAY-ST LUCIE RIVER TO CALOOSAHATCHEE RIVER: Restricted Channel Depths in Lake Okeechobee.

NOTICE OF NAVIGATION INTERESTS:

Due to extremely restricted channel depths in Lake Okeechobee, mariners are strongly advised that the following should be taken in consideration whether transiting the Lake or stopping for recreational activities such as fishing.

- Route 1: Lake elevations have been averaging 9.10 feet and below.
- Route 2 (the Rim Canal) is closed with navigation depths of 0.44 feet and less.

For complete text and water depth table see: Local Notice to Mariners 30/07, Enclosure Number 8.

Ref: LNM 30/07 through 16/08

Chart 11428

LNM: 30/07

FLORIDA - INTRACOASTAL WATERWAY - CHARLOTTE HARBOR TO TAMPA BAY: Hazard to Navigation. (Updated)

The Coast Guard has received a report of a possible submerged object in the vicinity of the center span of the Ringling Bridge.

On February 10, 2006 three (3) temporary buoys were deployed south of the new Ringling Causeway Bridge, in Sarasota Bay to mark submerged rocks that could pose a hazard to navigation during high tides. All three (3) buoys are east of the Gulf Intracoastal Waterway outside of the marked channel. The buoys are a standard, white, cylindrical information buoy. The buoys are anchored in place either on or in close proximity to the submerged rocks.

The buoys are one (1) foot in diameter and approximately 5 ½ feet tall, marked with a orange diamond shape and worded HAZARD. The approximate positions of the buoys are:

1. 27-19-52.620"N 082-33-24.060"W
2. 27-19-52.920"N 082-33-23.220"W
3. 27-19-53.940"N 082-33-22.080"W

It is requested that all mariners exercise caution when transiting this area.

Ref: LNM 08/06 through 16/08

Chart 11425

LNM: 06/06

SECTION VIII - LIGHT LIST CORRECTIONS

An Asterisk *, indicates the column in which a correction has been made to new information

(1) No.	(2) Name and Location	(3) Position	(4) Characteristic	(5) Height	(6) Range	(7) Structure	(8) Remarks
None							

ENCLOSURES

1. Special Warning Number 123, Somali.

Due to continuing conditions of armed conflict and lawlessness in Somali and waters off its coast, mariners are advised to avoid the Port of Mogadishu and remain at least 200 nautical miles distant from the Somali Coast.

2. Operation On Guard

On Guard Announcement

3. Dredging and Marine Construction

Dredging and Marine Construction List

4. Shoaling and Hazardous Situations

Shoaling and Hazardous Situation List

5. Bridge Construction and Repair/Drawbridge Status

Weekly Updated Status

6. Safe Boating Programs

Auxiliary Programs and Classes

7. Dredging and Beach Re-Nourishment Project

Boca Grande Pass and Off-Shore Captiva Island, Florida.

Chart 11426

LNM: 17/08

D.W. Kunkel
Rear Admiral, U.S. Coast Guard
Commander, Seventh Coast Guard District

SUBJ: REBROADCAST OF SPECIAL WARNING 123.
UNCLASSIFIED//
MSGID/GENADMIN/NGA NAVSAFETY BETHESDA MD//
RMKS/

SPECIAL WARNING NUMBER 123. SOMALI.

1. DUE TO CONTINUING CONDITIONS OF ARMED CONFLICT AND LAWLESSNESS IN SOMALIA AND WATERS OFF ITS COAST, MARINERS ARE ADVISED TO AVOID THE PORT OF MUQDISHO (MOGADISHU) AND TO REMAIN AT LEAST 200 NAUTICAL MILES DISTANT FROM THE SOMALI COAST. THE U.S. GOVERNMENT DOES NOT HAVE AN EMBASSY IN SOMALIA AND CANNOT PROVIDE SERVICES TO US CITIZENS.
2. RECENT VESSEL HIJACKINGS OFF THE EAST COAST OF SOMALIA DEMONSTRATE THAT PIRATES ARE ABLE TO CONDUCT AT SEA HIJACKINGS FROM AS FAR SOUTH AS KISMAAYO (CHISIMAYU) (00-22S), THOUGH VESSELS ARE ADVISED TO TRANSIT NO CLOSER THAN 02-00S, TO AS FAR NORTH AS EYL (08-00N), AND OUT TO A DISTANCE OF 170 MILES. THE FIRST KNOWN ATTEMPT TO HIJACK A CRUISE VESSEL OCCURRED IN NOVEMBER 2005. ALL MERCHANT VESSELS TRANSITING THE COAST OF SOMALIA, NO MATTER HOW FAR OFFSHORE, SHOULD INCREASE ANTI-PIRACY PRECAUTIONS AND MAINTAIN A HEIGHTENED STATE OF VIGILANCE. PIRATES ARE REPORTED TO HAVE USED PREVIOUSLY HIJACKED SHIPS AS BASES FOR FURTHER ATTACKS.
3. ANOTHER REPORTED PIRATE TACTIC HAS BEEN TO ISSUE A FALSE DISTRESS CALL TO LURE A SHIP CLOSE INSHORE. THEREFORE, CAUTION SHOULD BE TAKEN WHEN RESPONDING TO DISTRESS CALLS KEEPING IN MIND IT MAY BE TAKEN WHEN RESPONDING TO DISTRESS CALLS KEEPING IN MIND IT MAY BE A TACTIC TO LURE A VESSEL INTO A TRAP.
4. VICTIMIZED VESSELS HAVE REPORTED TWO TO THREE (2-3) SPEEDBOATS MEASURING SIX TO NINE METERS (6-9M) IN LENGTH. EACH VESSEL HAS A CREW OF THREE TO SIX (3-6) ARMED MEN WITH AK-47S AND SHOULDER LAUNCHED ROCKETS, WHICH ARE OPENING FIRE ON VESSELS IN BROAD DAYLIGHT IN ORDER TO INTIMIDATE THEM INTO STOPPING.
5. TO DATE, VESSELS THAT INCREASE SPEED AND TAKE EVASIVE MANEUVERS AVOID BOARDING WHILE THOSE THAT SLOW DOWN ARE BOARDED, TAKEN TO THE SOMALI COASTLINE, AND RELEASED AFTER SUCCESSFUL RANSOM PAYMENT, OFTEN AFTER PROTRACTED NEGOTIATIONS OF AS MUCH AS 11 WEEKS.
6. CANCEL SPECIAL WARNING NUMBER 111.//

#5827

BT

NNNN

OPERATION "ON GUARD"

U. S. Coast Guard Marine Safety Office Miami announces Operation "ON GUARD". This operation is designed to employ Coast Guard - active duty, reserve and auxiliary, Federal Bureau of Investigation, US Customs Service, US Immigration and Naturalization Service and the Florida Department of Law Enforcement personnel in response to suspected terrorist activity at the waterfront facilities of the United States. South Florida is extremely vulnerable because it is the terminus of illegal alien and narcotics smuggling routes from the Bahamas, the Caribbean and South America. These routes are well established and are readily available for use by terrorist organizations. An urgent need existed to make the American Public equal partners in the fight on terrorism. Operation "ON GUARD" creates an effective deterrent measure that employs the eyes and ears of the marine industry and the boating public, people that know every inch of the coastline because it is where they work and play. Potential terrorists are put on notice that their activities will be seen and reported.

Operation "ON GUARD" takes a two pronged approach consisting of face to face visits by Coast Guard, FBI, USCS, INS and FDLE personnel combined with a coordinated joint agency media campaign to reach Marina Operators, Marine Dealers, Bridge Tenders, Commercial Fishermen, and the Boating Public. This operation relies on Coast Guard Auxiliary programs already in place like the "Clean Marina" program, Vessel Safety Checks, Marine Dealer Visits and the Commercial Fishing Vessel Safety Program to reach their normal customers, the waterfront users. The public is provided with the toll free number (1.800.424.8802) for reporting suspected terrorist activity to the National Response Center and the 1.800.BE ALERT number for US Customs along with a list of reporting criteria.

Report:

- Suspicious persons conducting unusual activities
- Individuals establishing businesses or roadside food stands in proximity to marina or bridge
- Unknown persons photographing or creating diagrams
- Unknown or suspicious persons loitering for extended periods of time
- Unknown or suspicious persons renting watercraft
- Suspicious vendors attempting to sell/deliver merchandise or drop off packages

For additional information contact: LCDR Armin Cate (305) 535-8735

**D.
CONSTRUCTION OPERATIONS**

DREDGING AND MARINE

<u>Location</u>	<u>Type of Work</u>	<u>EST Comp Date</u>	<u>Dredge</u>	<u>Ref LNM</u>
Bahamas	Above Water Cable Ops	UNK	UNKNOWN	10/03
SC-Morris Island	Marine Construction	UNK	Taylor Brothers	29/07
FL-Mayport Naval Station Basin	Dredging Ops	JUN08	ATLANTIC	09/08
FL-Fernandina Beach	Dredge/Beach Renourish	AUG08	R.S.WEEKS	16/08
FL-St Johns River	Dredging Ops	MAY08	BME1	13/08
FL-New Smyrna/Ponce de Leon Cut	Dredging Ops	AUG08	WILKO	13/08
FL-Jupiter Inlet-Jupiter Sound	Dredging Ops	APR08	JERI-B	13/08
FL-Miami River	Dredging Ops	UNK	BARREDOR del RIO	07/08
FL-Everglades National Park	Seagrass Restoration	APR08	National Park Service	40/07
FL-Tampa Bay	Dredging Ops	APR08	OJIBWAY	46/07
FL-Sebastian River	Dredging Ops	2010	C-WAY/Subaqueous Services	05/07

E. SHOALING AND HAZARDOUS SITUATIONS

Location	Waterway	Significant Information	Chart	Ref LNM
SC	Seacoast	Charleston Harbor Ocean Dredged Material Disposal Site (ODMDS) higher than charted depths, minimum depth may be 18 feet.	11521	09-01
SC	Little River Inlet	A 47 ft tug sank in approx position 33-50.1N 078-32.8W and is marked with a lighted buoy	11535	29-03
SC	Winyah Bay	Shoaling has been reported in position 33-13-00N 079-11-50W in the vicinity of Georgetown Lighthouse (LLNR 20) the depth of the water was reported at 27 feet.	11535	50-01
SC	Charleston Hbr	Severe shoaling in center of channel datum at depth of 5.5 MLW between Mt. Pleasant Channel DB 1 (LLNR 3510) and Mt. Pleasant Channel DB 2 (LLNR 3515).	11523	31-03
SC	Fields Cut	Extensive shoaling while entering Fields Cut from the Wright River. Reported depths at MLW 3-4 feet.	11507	13-08
SC	Cooper River	A midstream transfer facility is conducting continued operations in the vicinity of Naval Weapons Station near the TC dock. Operations are outside the marked navigation channel and should not impede navigation.	11524	36-03
SC	Cooper River	Concrete and rock reported at the 40 foot depth on both sides of the navigation channel adjacent to the manmade islands directly under the I-526 Bridge.	11524	49-02
SC	Cooper River	A conveyor extends approx 20 ft into Town Creek beneath Cooper River bridges.	11524	13-02
SC	Folly River	Obstruction (steel H beam) reported 50-70 yds outside marked channel and southeast of FOLLY RIVER LB 2 (LLNR 3735) at low tide	11522	06-02
SC	Folly River	Shoaling observed in middle of channel, southwest of Folly River buoy 18 (LLNR 3755) and Folly River buoy 19 (LLNR 3760). Reported depth 3.4 feet.	11522	18-07
SC	Stono River	Shoaling has been reported between Stono River LT 31 (LLNR 34705) and Stono River Daybeacon 36 (LLNR 34720). Depth reported at 6 feet.	11518	16-07
SC	Beaufort River	Continued shoaling to depths of 6.5 feet in the vicinity from WHITE POINT LT 110 (LLNR 34945) through Dawho River Buoy113 (LLNR 34960)	11518	30-01
SC-ICW	Dawho River	Shoaling has been reported in the Dawho River between Dawho River Buoy 113, (LLNR 34960) and Dawho River LT 115 (LLNR 34965). Reported depths at 6ft MLW.	11518	46-07
SC	Cooper River	Submerged Obstruction reported in the vicinity of the Cooper River Bridge in approximate position 32-48-12.600N 079-55-03.400W	11524	10-01
SC	Cooper River	Shoaling to depths of 8 feet above charted datum reported in the vicinity of Cooper River Range "D" at the Naval Weapons Station.	11524	19-01
SC-ICW	Murrells Inlet	Shoaling has been reported in the vicinity of Murrells Inlet Buoy 26 (LLNR 1852)	11534	27-07
SC-ICW	Winyah Bay	Shoaling has been reported along Range E, Entrance Channel to Georgetown, SC	11534	06-06
SC-ICW	Winyah Bay-Char	Shoaling reported in the vicinity of Winyah Bay-Charleston Harbor DBN 117A (LLNR 34510.5)	11518	16-08
SC-ICW	Brickyard Creek	A new shoal extends out of channel on green side between Brickyard Creek Daybeacon 209 (LLNR 35325) and Brickyard Creek Daybeacon 211(LLNR 35335). Water depth at low tide is reported at 2.6 feet.	11507	17-04
SC-ICW		Severe reported shoaling between Hell's Gate Daybeacon 89 (LLNR 36279) and Hell's Gate Light 92 (LLNR 36290).	11507	17-06
SC-ICW	Port Royal Sound	Severe shoaling has been reported in various located in the ICW between Port Royal Sound, SC and Fernandina, FL. (See LNM 31/05 for Channel Conditions).	31-05	
GA	St Catherines Snd	Shoaling reported in vicinity of St Catherines Snd LB 2 (LLNR 5795)	11511	33-06
GA	Doboy Sound	Shoal 500 yards WNW of DOBOY SOUND LT 8 (LLNR 5945).	11510	35-00
GA	Mackay River	Piling marked by white strobe light is protruding one foot above waterline in center of channel	11510	17-02
GA	St Andrew Sound	Shoaling reported in vicinity of St Andrew Sound Buoy 2 (LLNR 6410). Depth reported 4 feet.	11508	23-04
GA	Jekyll Creek	Shoaling to a depth of 7 feet at the centerline has been reported throughout Jekyll Creek	11489	31-01
GA	Ramshorn Creek	Shoaling has been reported in the vicinity 32-26-00.872N 080-53-00.883W, TEMP Buoy 40A	11512	24-07
GA	Up Savannah Riv	Shoaling reported in the vicinity of Upper Savannah River Buoy 92 (LLNR 5540)	11515	39-07
GA-ICW	Vernon River	Shoaling has been reported in the middle of channel from Raccoon Key LB 78 (LLNR 36265) and Hells gate LT 91 (LLNR 36285)	11507	17-04
GA-ICW	Darien River	Shoaling has been reported between Darien River Buoy 12 (LLNR 36826.3) and Darien River Buoy 14 (LLNR 36826.4). Water depth reported 5 feet low tide.	11507	06-04
GA-ICW	Darien River	Shoaling has been reported in the vicinity of Darien River Daybeacon 27 (LLNR 36827.4) and Darien River Daybeacon 29 (LLNR 36827.5).	11507	05-08
GA ICW	Savannah River	Shoaling reported in the area between Elba Island Cut LT 2 (LLNR 35880) and Elba Island Cut LT 4 (LLNR 35885), Soundings shows the depth between two and four feet, approx 20 yards into the channel between the aids.	11507	01-05
GA ICW	Jekyll Creek	Shoaling has been observed between Jekyll Creek LT 20 (LLNR 37345) and Jekyll Creek LT 20A (LLNR 37346). Water depth reported 5 feet at low tide.	11489	06-04
FL East Coast	Amelia River	Extensive shoaling reported in the vicinity of South Amelia River DBN 34 (LLNR 38100)	11489	34-01
FL East Coast	Amelia Island	An unlit pier extends into the South Amelia River at LIGHT 29 (LLNR 38080) in approx position 30-35-09N 081-27-18W	11489	04-03
FL East Coast	St Johns River	Shoaling has been reported in the channel south of Mt Royal Light 63 (LLNR 8510) to Fort Gates Light 65 (LLNR 8520). Depth reported at low water is 4 feet.	11495	24-06
FL East Coast	Ortega River	Submerged pilings on west bank of upper Ortega River extending out approx 150 ft.	11492	17-02

FL East Coast	St. Augustine	5 foot in diameter unlighted buoy anchored in 27-38-20N 080-13-15W.	11474 04-01
FL East Coast	Lake George	Obstructions reported 100 yards west and 100 yds NW of Lake George South End Range Front Light (LLNR 8775).	11495 05-03
FL East Coast	Halifax River	Shoaling to an unknown depth has been reported in the vicinity of Halifax River Daybeacon 68 (LLNR 40470) and Halifax River Daybeacon 70 (LLNR 40480). The shoaling is reported to extend 40 yards from the west bank of the channel.	11485 19-01
FL East Coast	Halifax River	Shoaling to a depth of 3 feet in the vicinity of Halifax River DBN 30 (LLNR 40000) Increasing to a depth of 8 feet, 20 yards to the east of the DBN	11485 28-01
FL East Coast	Matanzas Coast	66 F/V sunk in position 29-03-09N 080-52-06W.	11484 43-00
FL East Coast	Matanzas River	Shoaling reported in Mantanzas River, north of Mantanzas bridge on west side of channel Approx 20 feet into channel.	11485 09-05
FL East Coast	Matanzas River	Shoaling reported with soundings of 9 feet at low tide trying to close itself in between <u>MATANZAS RIVER LIGHT 1</u> (LLNR 39035) and Matanzas River B 2 (LLNR 39040).	11485 37-03
FL East Coast	Matanzas River	Shoaling has been reported in the vicinity Matanzas River DBN 3 (LLNR 18090) Reported depths are 9.3 feet approx 300 feet WNW of DBN.	11427 29-01
FL East Coast	Ponce de Leon	Shoaling has been reported in the vicinity of Ponce de Leon Inlet. The following temporary buoys have been established to mark best water Ponce de Leon Inlet Buoys 5A, 7A, and 7B	11485 47-07
FL East Coast	Sebastian Inlet	A 207ft coastal freighter sank in approx position 26-0610N 080-01-15W.	11451 24-03
FL East Coast	Kissimmee River	A Submerged piling has been reported in position 28-13-00.00N 081-23-00.00W in Lake Tohopekaliga, Osceola County, FL.	XXXX 35-04
FL East Coast	Stuart	A tug and barge have sunk on east side of north/south jetty of St. Lucie Inlet. in approximate location 27-10-06N 080-08-58W.	11472 50-02
FL East Coast	St Lucie River	Shoaling reported in vicinity of St Lucie River Inlet Daybeacon 8 (LLNR 50710)	11428 28-07
FL East Coast	Jupiter Inlet	An unlit mooring ball with letters "PBSC" in approx position 26-42.12N 080-01.54W	11466 29-03
FL East Coast	Singer Island	Shoaling has been reported in the vicinity of Singer Island Daybeacon 1 (LLNR 10211) A temporary unlighted buoy has been placed in AP 26-46-28.544N 080-02-24.413W	11472 08-06
FL East Coast	Boca Raton Inlet	Report of 5 ft steel mooring buoy anchored approx 220 yds southeast of Boca Inlet.	11467 17-02
FL East Coast	Boca Raton Inlet	Severe shoaling reported at the entrance to Boca Raton inlet.	11466 20-05
FL East Coast	Malloy Channel	Report of 80-100 ft black pipe obstructing channel 100 yds north of Miami Yacht Club	11467 21-02
FL West Coast	Capri Pass	Shoaling has been reported in vicinity of Capri Pass Light 2 (LLNR 47820) and between Capri Pass Light 3 (LLNR 16955) and Capri Pass Light 4 (LLNR 16960)	11430 24-05
FL West Coast	South Seas	Shoaling between South Seas Plantation Daybeacon 5 (LLNR 55730 Plantation and South Seas Plantation Daybeacon 21 (LLNR 55880).	11427 12-01
FL West Coast	Fort Myers	A partially submerged piling only visible at low tide approximately 5 ft away from Cape Coral Rim Channel DBN 65 (LLNR 53190) located in 26-33-49.773N 081-55-59.117W.	11427 50-02
FL West Coast	Matanzas Pass	Shoaling at Matanzas Pass DBN 3 (LLNR 18090) and DBN 4 (LLNR 18095) Just after high tide 2-3 feet and 4ft at low tide.	11427 50-07
FL West Coast	New Pass	Extensive shoaling exist from New Pass LT NP (LLNR 1345/21585) to New Pass Channel LT 7 (LLNR 21620), water depths are constantly changing and surf breaking.	11425 36-05
FL West Coast	Cortez Bay	Shoaling reported encroaching into the channel in the vicinity of Siesta Key-Tampa Bay Buoy 39 (LLNR 59345)	11425 03-03
FL West Coast	Siesta Key-TB	Shoaling reported in vicinity of Siesta Key-Tampa Bay Buoy 43. Shoaling extends Channel ward approximately 15 yds. A depth of 5 ft has been reported at mean-low water.	11425 07-06
FL West Coast	Charlotte Harbor	Severe shoaling has been reported in the vicinity of Charlotte Harbor Buoy 3A (LLNR 19915)	11425 31-06
FL West Coast	Tampa Bay	Shoaling reported between New Pass Buoy 3A (LLNR 21595) and New Pass Light (LLNR 21620), extending 20 yards channel ward.	11425 40-04
FL West Coast	Boca Ciega Bay	No Wake sign reported destroyed 100 yds south of Pinellas Bayway Structure "C" Bridge Located below the waterline in approximate position 27-42.5N 082-43.3W	11411 03-03
FL West Coast	Tampa Bay	195 Ft sunken barge approximately 11NM NW of Egmont Key	11412 52-05
FL West Coast	Tampa Bay	Shoaling reported in the vicinity of Pithachascotte River Light 16 (LLNR 26585)	11409 20-06
FL West Coast	New Port Richey	Sunken 50 FT fishing vessel approximately 312 degrees T at 2,700 yards from Cotee River Light 1 (LLNR 26505). Charts: 11409 and 11411.	11411 52-05
FL West Coast	Gordon Pass	Shoaling has been reported in the vicinity of Gordon Pass DBN 2 (LLNR 17455) and Gordon Pass DBN 3 (LLNR 17460).	11430 18-07
FL West Coast	Tampa Bay	A submerged 15 foot plastic piling reported approximately 80 yards bearing 225 degrees From Tampa Bay Cut F Channel Lighted Buoy 10F(LLNR 22845).	11416 30-02
FL West Coast	Big Sarasota Pass	Shoaling reported between Big Sarasota Pass Daybeacon 1 (LLNR 21500.1) and Big Sarasota Pass Daybeacon 2 (LLNR 21500.2), and between Big Sarasota Pass Daybeacon 3 (LLNR 21500.3) and Big Sarasota Pass Daybeacon 5 (LLNR 21500.5).	11424 23-07
FL AICW	San Sebastian Rvr	Shoaling reported in the vicinity of San Sebastian River Daybeacon 13A (LLNR 39153)	11485 32-07
FL AICW	Matanzas River	Shoaling has been reported north of Matanzas River Bridge, west side. Depth of 5 feet reported in position 29-33-45.571N 081-11-06.481W	11485 09-05
FL AICW	Matanzas River	Shoaling has been reported in the vicinity of Matanzas River Buoy 81A (LLNR 39535) and Matanzas River Buoy 81B (LLNR 39537).	11484 13-08
FL AICW	Ponce de Leon Cut	Shoaling has been reported in the vicinity of Ponce de Leon Inlet Temp Buoy 7B	11485 24-07
FL AICW	Ponce de Leon Cut	Shoaling has been reported in the vicinity of Ponce de Leon Cut Junction DBN (40615) to Ponce de Leon Cut DBN 18 (LLNR 40610). Water depth in marked channel is 6 feet at low tide.	11485 10-06

FL AICW	Indian River (SS)	Shoaling exist across entire channel between Indian River (SS) Daybeacon 184 (LLNR 45085) and Daybeacon 186 (LLNR 45110). Report depths of 5 feet at low tide.	11485 31-00
FL AICW	Boynton Inlet	Heavy shoaling near Lake Worth DBN 46 (LLNR 47015).	11467 31-00
FL AICW	Hillsboro Inlet	Shoaling has reported in Ocean Park Channel between Daybeacon 1 (LLNR 47040) and Daybeacon 8 (LLNR 47075).	11467 08-06
FL AICW	St Lucie Inlet	Shoaling has been reported in the St Lucie River between Lighted Buoy 2 (LLNR 50635) and -Buoy 3 (LLNR 50640). Reported water depth is 5 ½ feet.	11468 14-07
FL AICW	St Lucie Canal	Shoaling has been reported in the vicinity of St Lucie Canal Daybeacon 38 (LLNR 51120)	11428 37-07
FL AICW	Jupiter Inlet	Shoaling in and around Jupiter Inlet Temp Buoy 2A	11472 03-08
FL AICW	Jupiter Inlet	Shoaling reported on the north side of the channel, approximately 200 yards SE of Lighthouse Point. Minimum depth observed 5 feet MLW.	11474 35-07
FL AICW	Lake Worth inlet	Shoaling has been reported along the north side of Entrance Channel	11474 35-04
FL AICW	Venice Inlet	Shoaling 600 yards North and 200 yards South of the Albee Bridge.	11425 31-00
PR	Vieques Snd Culebra	A submerged offshore mariculture site has been established 2 miles southeast of Culebra Island and is outlined by coordinates 18-16.67N 065-20W, 18-16.4N 065-19.72W	25650 32-02
PR	La Parguera	Shoaling has been reported in the vicinity of Caleta Parguera in position 17-57-29.9N 067-03-07.6W and 17-57-31.9N 067-02-39.7W.	25671 19-02 23/07

A. BRIDGE CONSTRUCTION/REPAIR

Location	Type of Work	EST Comp Date	Bridge	Ref LNM
GA-Turtle Riv/Gibson Cr	Bridge Construction	OCT 09	I-95 Bridges	49-06/35-07
FL-ICW-Jacksonville Bch	Bridge Construction	APR 09	BB McCormick (Beach Blvd)	34-06/05-08
FL-ICW-St. Augustine	Bridge Construction	JAN 10	Bridge of Lions Bridge	08-07/45-07
FL-ICW-St Sebastian Riv	Bridge Construction	JUN 08	St Sebastian Bridge	03-08/14-08
FL-Miami Hbr-Miami Riv	Bridge Construction	AUG 08	NW 12 th Ave Bridge	26-07/44-07
FL-ICW-Jewfish Cr	Bridge Construction	DEC 08	Jewfish Cr Bridge	12-07/19-07
FL-ICW-Caloosahatchee Riv	Bridge Repairs	APR 08	Cape Coral Bridge	10-08
FL-ICW-Okeechobee-Sanibel	Bridge Construction	APR 08	Sanibel Cswy Bridge	26-07/02-08
FL-ICW-Anna Maria Sound	Bridge Repairs	DEC 08	Anna Maria Bridge	11-08
FL-ICW-Clearwater Harbor	Bridge Construction	SEP 09	Belleair Cswy Bridge	20-07/41-07
FL-Johns Pass	Bridge Construction	JAN 09	Johns Pass Bridge	07-06/35-07

B. DRAWBRIDGE STATUS SUMMARY

The following is a list of known drawbridge discrepancies, restrictions, and closures in navigable waters of the Seventh Coast Guard District. Additional information regarding bridges can be found in Volume 4 (Cape Henry to Key West) or Volume 5 (Gulf of Mexico, Puerto Rico and Virgin Islands) of the U.S. Coast Pilot, 33 CFR 117, or by calling (305) 415-6743. Unless otherwise noted in the date column, the described status will be in effect until further notice. Mariners knowing of bridge activities not listed below are urged to notify the Seventh Coast Guard District Bridge Branch.

BRIDGE	LOCATION	DATE	STATUS	REF
Jewfish Cr	AICW, Key Largo, FL	Until Apr 30, 08	Special Regs	35-07/36-07
Cortez	GICW, Cortez, FL	Until Dec 30, 08	Special Regs	15-08
Anna Maria Sound	GICW, Anna Maria, FL	Until Dec 30, 08	Special Regs	15-08
Belleair Beach	GICW, Belleair Beach, FL	Dec 20, 07–Sep 20, 08	Special Regs ½ schedule	49-07

C. BRIDGE INFORMATION.

GEORGIA – BRUNSWICK HARBOR – SIDNEY LANIER BRIDGE: Marine Safety.

The horizontal clearance of the Sidney Lanier Bridge as charted has been reported to be inaccurate. The navigation lighting on the main structure has also been reported to be inaccurate. Mariners should exercise extreme caution when passing through this structure. The Coast Guard is investigating.

Ref: LNM 06-07 through 16-08

Chart: 11506

GEORGIA – ST SIMON SOUND – BRUNSWICK HARBOR AND TURTLE RIVER – Bridge Construction/Demolition.

The Georgia Department of Transportation advises that they will be removing portions of an existing bridge and widening both I-95 Bridges across Turtle River and Gibson Creek, Glynn County, Georgia. This work will continue until October, 2009.

Ref: LNM 49-06 through 16-08
Chart: 11506

CG File: 1145/1137

FLORIDA – MIAMI HARBOR – MIAMI RIVER – NORTHWEST 12TH AVENUE: Bridge Construction/Waterway Closure.

The Northwest 12th Avenue Bridge, across the Miami River mile 2.1, Miami-Dade County, Florida is being replaced. This work is expected to continue until August, 30, 2008. There will be tugs and barges in the vicinity of the bridge and at times the waterway will be restricted while equipment/construction material is delivered to the bridge.

Ref: LNM 26-07 through 16-08
Chart: 11468

CG File: 2460

FLORIDA – WEST COAST – JOHNS PASS: Bridge Construction.

Due to the Johns Pass Bridge construction, this bridge will be closed to navigation from 1:00 a.m. to 11:00 a.m. each day, Monday through Friday until August 31, 2008. There are also two scheduled waterway closures, one will be on May 5 and 6, 2008 and the other is May 12, 2008. The waterway closures are dependent on weather; updates will be provided by Broadcast Notice to Mariners as needed.

Ref: LNM 16-08
Chart: 11411

CG File: 2564

NEW JERSEY - ATLANTIC INTRACOASTAL WATERWAY – LITTLE EGG HARBOR TO CAPE MAY – BEACH THOROFARE: Bridge Repairs.

Mariners are advised that emergency structural steel repairs will be performed at the Margate Bridge, at ICW mile 74.0, across Beach Thorofare in Margate, NJ. These repairs require immobilizing half of the draw span to single-leaf operation each day beginning at 7 a.m. on Saturday, March 1 until and including 11:59 p.m. Thursday May 1, 2008, with a work barge occupying one-half of the 58-foot wide channel under the bridge, so passage through the bridge will be limited to a 29-foot width for the duration of the project. The opposite connecting span while not under repair will continue to open for vessels with at least a half-hour advance notice given to the bridge tender at (609) 822-9175 or via marine radio on channel 13 VHF. Also, mariners requiring the full opening of the lift spans or the full width of the channel under the bridge will be directed to use the Atlantic Ocean as the alternate route between Absecon and Great Egg Harbor Inlets. Mariners should exercise caution when transiting the area.

Ref: LNM 08 through 16-08

Chart: 12316

FLORIDA – ATLANTIC INTRACOASTAL WATERWAY – FERNANDINA BEACH – ST JOHNS RIVER – SISTERS CREEK: Bridge Fender Repairs.

Repairs to the Heckscher Drive (Sisters Creek) Drawbridge, Atlantic Intracoastal Waterway mile 739.2, Duval County, Florida will commence on April 1 and will continue until January 10, 2009. The contractor will be working from 7:00 a.m. to 5:00 p.m., Monday through Thursday, behind the bridge fender system; but may impact the navigable channel for short periods of time.

Ref: LNM 07 through 16-08
Chart: 11489

CG File: 2523

FLORIDA – ATLANTIC INTRACOASTAL WATERWAY – ST AUGUSTINE – BRIDGE OF LIONS: Bridge Construction.

Construction continues on the Bridge of Lions, Intracoastal Waterway mile 797.9, St. Augustine, Florida.

Ref: LNM 18, 21-05 through 16-08

Chart: 11489

FLORIDA – ATLANTIC INTRACOASTAL WATERWAY – ST JOHNS RIVER TO TOLOMATO RIVER – MCCORMICK BRIDGE: Bridge Construction.

Construction of the new McCormick (Beach Boulevard/SR 90) Bridge, Intracoastal Waterway mile 747.5, Jacksonville Beach, Duval County, Florida will began in December 2006 and will continue until March 2009. A barge will be in the immediate vicinity of the bridge and may be in the navigable channel as needed.

The U.S. Captain of the Port Jacksonville advises that their will be periodic channel restrictions at the B.B. McCormick/Beach Boulevard Bridge for the next six to eight weeks. During that time mariners can general expect 30 feet of horizontal clearance. Vessels needing additional clearance should contact Superior Construction Inc. at (904) 223-5076 or the tug tender on-scene, to request safe passage. Your request should be accommodated in approximately 30 minutes, based on operations.

Ref: LNM 34-06 through 16-08 and Sector Jacksonville MSIB 02-08a
Chart: 11485

CG File: 2780/3822

FLORIDA – ATLANTIC INTRACOASTAL WATERWAY – TOLOMATO RIVER TO PALM SHORES – JOHN F. KENNEDY SPACE CENTER BRIDGE: Bridge Repairs.

The John F. Kennedy Space Center Bridge, Atlantic Intracoastal Waterway mile 885.0, Addison Point, Florida is being repaired. This work will continue until June 30, 2008 and will not be encroaching on the navigable channel. Mariners are requested to proceed at slow speed/minimum wake through this area.

Chart: 11485

CG File: 3115

FLORIDA – ATLANTIC INTRACOASTAL WATERWAY – PALM SHORE TO WEST PALM BEACH – EAU GALLIE – ST. LUCIE INLET – INDIAN RIVER (SOUTH SECTION) – ST SEBASTIAN RIVER: Bridge Construction/Demolition.

The Saint Sebastian Bridge across the Saint Sebastian River is being replaced. Demolition of the existing southbound bridge has commenced and will continue through June 11, 2008.

Ref: LNM 03 through 16-08
Chart: 11472

CG File: 3845

FLORIDA – ATLANTIC INTRACOASTAL WATERWAY – WEST PALM BEACH TO MIAMI – NEW RIVER (SOUTH FORK) – CSX RAILROAD BRIDGE: Horizontal Clearance Reduction.

The horizontal clearance of the CSX Railroad Bascule Bridge across the New River (South Fork) mile 2.8, Fort Lauderdale, Broward County, Florida has been temporarily reduced to 56 feet.

Ref: LNM 16-08

CG File: 2500

Chart: 11467

FLORIDA – ATLANTIC INTRACOASTAL WATERWAY – WEST PALM BEACH TO MIAMI – NEW RIVER – NEW RIVER CANAL – FLORIDA TURNPIKE: Bridge Widening.

A contractor is driving pilings on either side of the New River Canal between the north and south spans of the Florida Turnpike Bridge. This work is expected to be completed by May 30, 2008.

Ref: LNM14 through 16-08

Chart: 11467

FLORIDA – ATLANTIC INTRACOASTAL WATERWAY – MIAMI TO JEWFISH CREEK – BROAD CAUSEWAY BRIDGE: Bridge Repairs.

The Broad Causeway (125 Street) Bridge, Atlantic Intracoastal Waterway mile 1081.4, Bay Harbor Island, Florida will be closed to navigation from 10:00 p.m. to 5:00 a.m. daily from May 13 through May 15, 2008, for repairs.

Chart: 11467

CG File: 2879

FLORIDA – ATLANTIC INTRACOASTAL WATERWAY – MIAMI TO JEWFISH CREEK – JEWFISH CREEK BRIDGE: Bridge Construction/Update.

Work continues on the new Jewfish Creek Bridge, across the Atlantic Intracoastal Waterway, Jewfish Creek, Florida. The contractor will have floating equipment in the vicinity of Jewfish Creek and Lake Surprise from April 2, 2007 until December 10, 2008. Mariners are requested to proceed at slow speed minimum wake through this location.

The contractor has advised the Coast Guard that they will performing the following work on the new Jewfish Creek Bridge:

1. Fender construction along the channel limits will be conducted from 7:00 a.m. to 5:30 p.m., Monday through Friday, November 8 through December 10, 2008. The contractor does not intend to restrict access to the Jewfish Creek Drawbridge during this time.
2. Girder erection from 8:00 p.m. to 5:30 a.m., Monday through Friday, January 7 through January 30, 2008. Waterway closures are anticipated during the evenings of February 8 and February 9, 2008 and February 11 and February 12, 2008..

Due to construction vehicles entering the highway in this location, the Coast Guard will be temporarily changing the drawbridge regulation. From September 10, 2007 until December 10, 2008, the Jewfish Creek Bridge will open on signal, except that from 7:00 a.m. to sunset the draw shall open on the hour and half-hour.

Ref: LNM 12-07 through 16-08 and Federal Register Docket #CGD07-07-252

Chart: 11451

CG File: 2763

FLORIDA – OKEECHOBEE WATERWAY – CALOOSAHATCHEE RIVER – CAPE CORAL BRIDGE: Bridge Repairs.

Repairs to the Cape Coral Bridge, Okeechobee Waterway mile 142.0, Cape Coral, Lee County, Florida commenced on February 29, 2008 and will continue until April 20, 2008. There may be a reduction up to two feet in vertical clearance depending on the location of the platform during the repairs.

Ref: LNM 10 through 16-08

Chart: 11428

FLORIDA – OKEECHOBEE WATERWAY – CALOOSAHATCHEE RIVER – SAN CARLOS BAY - SANIBEL CAUSEWAY BRIDGE: Bridge Construction.

Work continues on the Sanibel Causeway Bridge across the Caloosahatchee River, Sanibel, Lee County, Florida. Due to this bridge construction the vertical clearance has been reduced to 68 feet. This work is anticipated to be completed by April 30, 2008.

Ref: BNM 1486-06-STP, 735-07-STP and LNM 25-05 through 16-08 CG File: 3057

Chart: 11428

FLORIDA – GULF INTRACOASTAL WATERWAY – CHARLOTTE HARBOR TO TAMPA BAY – DONA BAY – SHAKETT CREEK: US 41 BRIDGE: Bridge Repairs.

The Shakett Creek waterway under the US 41 Bridge, Sarasota County, Florida will be closed to navigation from April 1 until September 15, 2008, due to bridge repairs.

Ref: LNM 13 through 16-08

Chart: 11425

CG File: 2570B

FLORIDA – GULF INTRACOASTAL WATERWAY – SIESTA KEY TO TAMPA BAY – ANNA MARIA SOUND – CORTEZ/ANNA MARIA BRIDGES: Bridge Regulation Change.

The Coast Guard is changing the operating regulations governing the Cortez bridge mile 87.4 and the Anna Maria bridge mile 89.2 across the Gulf Intracoastal Waterway to allow for the rehabilitation of the Anna Maria Bridge. This rule will allow each bridge to open on a twice an hour schedule, except that each bridge will open once every hour during the 45 day vehicle closure period on the Anna Maria Bridge.

This action is necessary for workers safety and will assist in expediting the rehabilitation of the Anna Maria Bridge. This temporary rule is effective through 7 p.m. December 30, 2008.

Sec. 117.287 Gulf Intracoastal Waterway.

(d)(5) Cortez (SR 684) Bridge, mile 87.4. The draw shall open on signal; except that from 6 a.m. to 7 p.m., the draw shall open on the hour and half-hour.

From September 29, 2008 to November 13, 2008, the Cortez Bridge will remain closed to navigation from 5:35 a.m. to 9:25 a.m., 1:35 p.m. to 4:25 p.m. and 8 p.m. to 4:25 a.m. At all other times, this bridge will open once an hour on the bottom of the hour.

(6) The Anna Maria (SR 64) (Manatee Avenue West) Bridge, mile 89.2. The draw shall open a single-leaf on signal; except that from 6 a.m. to 7 p.m., the draw shall open on the hour and half-hour. A double-leaf opening will be available with a one-hour notice to the bridge tender.

From September 29, 2008 to November 13, 2008, the Anna Maria Bridge will remain closed to navigation from 6 a.m. to 9 a.m., 2 p.m. to 5 p.m. and 8 p.m. to 5 a.m., at all other times, this bridge will open once an hour on the top of the hour.

Ref: LNM 11 through 16-08 and Federal Register Docket #USCG-2008-0117

Chart: 11411

CG File: 2252/2919

FLORIDA – GULF INTRACOASTAL WATERWAY – TAMPA BAY TO ANCLOTE KEY – PINELLAS BAYWAY STRUCTURE "E" BRIDGE: Bridge Regulation Change.

The Coast Guard is changing the operating regulation governing the Pinellas Bayway Structure "E" (SR 679 Bridge), Gulf Intracoastal Waterway, mile 113, St. Petersburg Beach, Pinellas County, Florida. This rule will provide vehicular traffic relief during heavy vehicular traffic periods flowing into a nearby county park and will meet the reasonable need of navigation.

This rule is effective April 30, 2008. 117.289(d)(4)

Pinellas Bayway Structure "E" (SR 679) bridge, mile 113.0 at St. Petersburg Beach. The draw shall open on signal, except that from 9 a.m. to 7 p.m. the draw need open only on the hour and 30 minutes past the hour.

Ref: LNM 15, 16-08 and Federal Register Docket #USCG-2007-0096 CG File: 3001E

Chart: 11411

FLORIDA – GULF INTRACOASTAL WATERWAY – TAMPA BAY TO ANCLOTE KEY – BELLEAIR BEACH BRIDGE: Bridge Construction.

The Coast Guard is changing the regulations governing the operation of the Belleair Beach Bridge, Gulf Intracoastal Waterway mile 131.8, Belleair Beach, Pinellas County, Florida. The Belleair Beach Bridge will open on signal, except that from 7:00 a.m. to 7:00 p.m. this bridge will open on the hour and half-hour from December 20, 2007 until September 20, 2008. This action is necessary for workers safety and will assist in expediting the construction of the new bridge.

The contractor has advised the Coast Guard that they will be setting beams across the navigable channel during the night of April 10, 2008. The Coast Guard will issue a safety zone in the vicinity of the bridge during this operation for the safety of vessels.

Ref: LNM 25-07 through 16-08 and Federal Register Docket # (CGD07-07-107)

Chart: 11411

FLORIDA – GULF INTRACOASTAL WATERWAY – TAMPA BAY – BOCA CIEGA BAY – CLEARWATER MEMORIAL WEST PEDESTRIAN BRIDGE: Bridge Construction.

Clearwater Memorial West Pedestrian Bridge is under construction until April 30, 2008. This operation will not interfere with the Gulf Intracoastal Waterway. Mariners are request to maintain minimum wake through this area.

Ref: LNM 41-07 through 16-08

Chart: 11411

SAFE BOATING AND SEAMANSHIP PROGRAMS

For addition information on CG Auxiliary Public Education Boating Programs, contact 1-800-336-2628 or <http://www.cgaux7.org/>

HOST	DATES	TIME	LOCATION
U.S. Coast Guard Auxiliary Flotilla 42 (321) 773-7599	Continuous Boating Skills and Seamanship	7:30 p.m.– 9:30 p.m. (Tuesdays & Thursdays) 6 Weeks, 12 Lessons	Palm Bay Community Ctr 1502 Port Malabar Blvd Palm Bay, FL
U.S. Coast Guard Auxiliary Flotilla 78 (727) 360-7496	Continuous Boating Skills and Seamanship	7:30 p.m.– 9:30 p.m. (Mondays) 13 Weeks	Webster Community Ctr 1500 Passe Grille Blvd St Petersburg, FL
U.S. Coast Guard Auxiliary Flotilla 79 (813) 855-6997	Continuous Boating Skills and Seamanship	7:30 p.m.– 9:30 p.m. (Wednesdays) 13 Weeks	5108 Gandy Blvd Salty Sol Boat Ramp Tampa, FL
U.S. Coast Guard Auxiliary Flotilla 7-16 (727) 323-5950	Continuous Boating Skills and Seamanship	7:30 p.m.– 9:30 p.m. (Tuesdays) 13 Weeks	USCG Auxiliary Bldg 3120 Miriam St South Gulfport, FL
U.S. Coast Guard Auxiliary Flotilla 51 (561) 844-3114	Continuous Boating Skills and Seamanship	7:30 p.m.– 9:30 p.m. (Tuesdays & Thursdays) 6 Weeks, 12 Lessons	CG Aux Bldg, P Foster Park 900 E. Blue Heron Blvd Riviera Beach, FL
U.S. Coast Guard Auxiliary Flotilla 55 (561) 585-8918	Continuous Boating Skills and Seamanship	7:00 p.m.– 9:00 p.m. (Mondays & Wednesdays) 6 Weeks, 12 Lessons	Santaluces High School Lawrence Road Lantana, FL
U.S. Coast Guard Auxiliary Flotilla 52 (772) 744-3876	Continuous Boating Safety Program	9:00 a.m.– 5:00 p.m. (Last Saturday of Each Month)	CG Aux Building Jupiter Lighthouse Park Jupiter, FL
U.S. Coast Guard Auxiliary Flotilla 81 (941) 761-4303/761-7393	Continuous Boating Skills and Seamanship	7:00 p.m.– 9:00 p.m. (Tuesdays & Thursdays) 4 Weeks	CG Aux Bldg, G.T.Bray Park 5801 53 rd Ave Court W Bradenton, FL
U.S. Coast Guard Auxiliary Flotilla 14-08 (904) 721-1346	Continuous Boating Safety Program	7:30 a.m.– 5:00 p.m. (Saturdays)	Stellar Building 2900 Hartley Road Jacksonville, FL
U.S. Power Squadron Fort Lauderdale (954) 523-3577	Continuous Basic Safe Boating Course	7:00 p.m. – 9:00 p.m. (1 st Monday of each month)	Lauderdale Marine Ctr 2029 SW 20 th Street Fort Lauderdale, FL
U.S. Coast Guard Auxiliary Flotilla 11-1 (727) 469-8895	Continuous America's Boating Course	7:30 p.m. – 9:30 p.m. (Mondays and Thursdays) 6 Weeks, 12 Lessons	Clearwater Comm Sailing Ctr 1001 Gulf Blvd Sand Key (Clearwater), FL
U.S. Coast Guard Auxiliary Boca Raton Flotilla (561) 391-3600	Starting April 22, 2008 Boating Skills & Seamanship Course	7:00 p.m. – 9:00 p.m. (Tuesdays) 7 Weeks	Marine Safety Building 3939 N. Ocean Blvd Boca Raton, FL
U.S. Coast Guard Auxiliary Plantation Flotilla 38 (954) 296-2303	April 26, 2008 One Day Boating Course	8:00 a.m. (Saturday)	Plantation Community Outreach Center, (North Entrance to the Broward Mall) University & Broward Blvd
U.S. Coast Guard Auxiliary Flotilla 73 (727) 517-0049	June 7, 2008 Boating Safety Program	8:00 a.m.– 5:00 p.m. (Saturday)	Flotilla 73 Auxiliary Bldg 299 Boca Ciega Drive Madeira Beach, FL

U.S. Coast Guard Auxiliary
Flotilla 73
(727) 517-0049

August 9, 2008
Boating Safety Program

8:00 a.m.– 5:00 p.m.
(Saturday)

Flotilla 73 Auxiliary Bldg
299 Boca Ciega Drive
Madeira Beach, FL

U.S. Coast Guard Auxiliary
Flotilla 73
(727) 517-0049

September 13, 2008
Boating Safety Program

8:00 a.m.– 5:00 p.m.
(Saturday)

Flotilla 73 Auxiliary Bldg
299 Boca Ciega Drive
Madeira Beach, FL

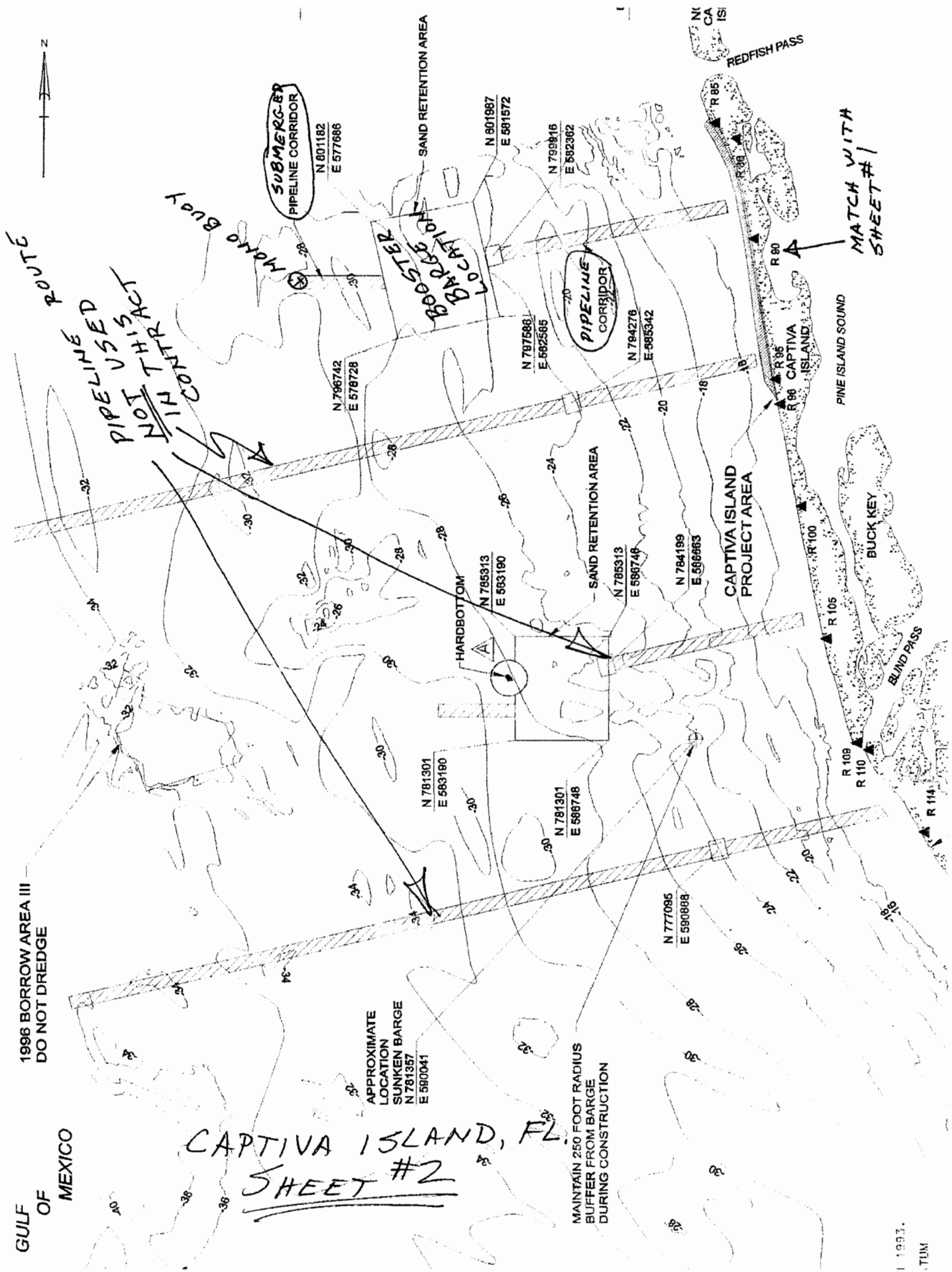
U.S. Coast Guard Auxiliary
Flotilla 73
(727) 517-0049

October 18, 2008
Boating Safety Program

8:00 a.m.– 5:00 p.m.
(Saturday)

Flotilla 73 Auxiliary Bldg
299 Boca Ciega Drive
Madeira Beach, FL

Programs are free; there is a nominal fee for text workbooks, etc.



1996 BORROW AREA III
DO NOT DREDGE

GULF OF MEXICO

CAPTIVA ISLAND, FL.
SHEET #2

APPROXIMATE
LOCATION
SUNKEN BARGE
N 781357
E 580041

MAINTAIN 250 FOOT RADIUS
BUFFER FROM BARGE
DURING CONSTRUCTION

*PIPELINE USED
NOT THIN IN
CONCRETE
ROUTE*

**SUBMERGED
PIPELINE CORRIDOR**

**PIPELINE
CORRIDOR**

*MATCH WITH
SHEET #1*

