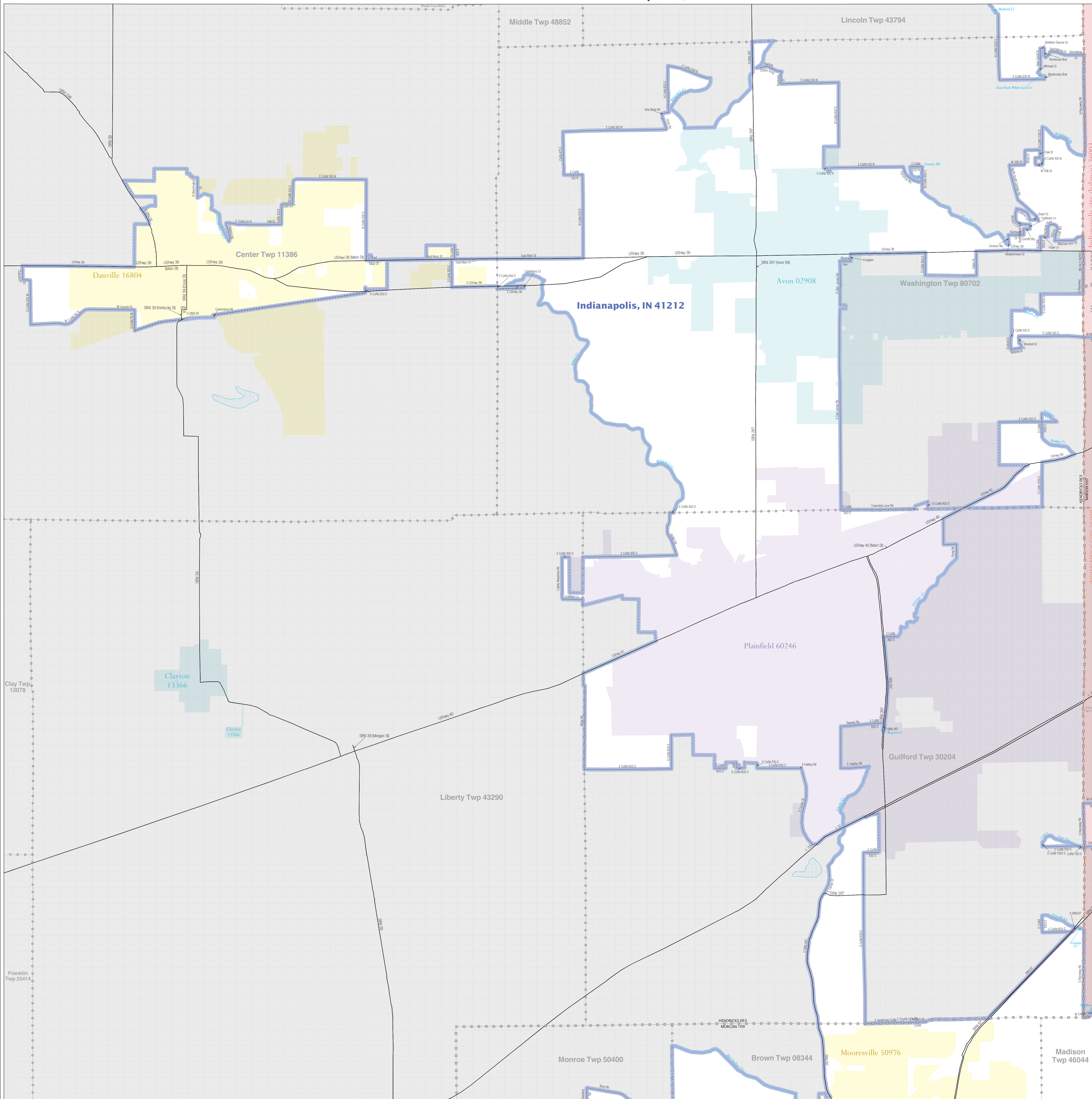


URBANIZED AREA OUTLINE MAP (CENSUS 2000) Indianapolis, IN



LEGEND

SYMBOL DESCRIPTION / SYMBOL	NAME STYLE
International	CANADA
AIR (Federal) *	L'ANSE RES (1880)
Trust Land / Home Land	T1880
OTSA / TDSA / ANVSA	KAW OTSA (5340)
Tribal Subdivision	SHONTO (620)
AIR (State) †	Tama Res (4125)
SDASA	Lumbee (9815)
ANRC	NANA ANRC 52120
Urbanized Area	Baltimore, MD 04843
Urban Cluster	Tooele, VT 88057
State or Statistically Equivalent Entity	NEW YORK 36
County or Statistically Equivalent Entity	ERIE 029
Minor Civil Division (MCD) †	Pike Twp 59742
Census County Division (CCD)	Kula CCD 91890
Consolidated City	MILFORD 47500
Incorporated Place †	Rome 63418
Census Designated Place (CDP)	Zena 84187

* Where international, state, county, and/or MCD/CCD boundaries coincide, the map shows the boundary symbol for only the highest ranking of these boundaries.
 † Features shown only when coincident with the subject urbanized area / urban cluster boundary.
 ‡ Features coincident with the boundary of an entity other than the subject urbanized area / urban cluster.

FEATURE	SYMBOL	FEATURE	SYMBOL
Major Roads		Stream or Shoreline ‡	
Other Roads ‡		Large River or Lake	
Railroad †		Military Installation	
Pipeline or Power Line ‡		Outside Subject Area	
Ridgeline or other physical feature ‡		Major Airports	
Nonvisible Boundary ‡			
Other Boundary Feature ‡			

ABBREVIATION REFERENCE: AIR = American Indian Reservation; Trust Land = OT-Reservation Trust Land; Home Land = Homeless Home Land; OTSA = Oklahoma Tribal Statistical Area; TDSA = Tribal Designated Statistical Area; ANVSA = Alaska Native Village Statistical Area; Tribal Subdivision = American Indian Tribal Subdivision; SDASA = State Designated American Indian Statistical Area; ANRC = Alaska Native Regional Corporation



The urban areas (urbanized areas and urban clusters) are defined using Census 2000 blocks and population data for statistical purposes only. The detailed criteria for defining urban areas were published in the Federal Register (67 FR 11663). All legal boundaries and names are as of January 1, 2000. The boundaries shown on this map are for Census Bureau statistical data collection and tabulation purposes only; their depiction and designation for statistical purposes does not constitute a determination of jurisdictional authority or rights of ownership or entitlement.
 Source: U.S. Census Bureau's TIGER database
 Projection: State-based Albers' Equal Area
 U.S. DEPARTMENT OF COMMERCE Economics and Statistics Administration U.S. Census Bureau

