

Volume III, Section 1— Combination System Implementation Guide

Table of Contents

Overview	III-1-5
The Higher Education Reconciliation Act of 2005 (the HERA).....	III-1-5
TEACH Grant and Other Regulatory Changes	III-1-6
What it Means to be a Combination User.....	III-1-7
Organization of this Guide	III-1-8
Enhancements and Changes to EDEExpress for 2008-2009	III-1-9
Global	III-1-9
Application Processing	III-1-10
Direct Loan	III-1-10
Pell.....	III-1-11

Business Rules.....	III-1-13
2008-2009 COD Message Class Options	III-1-13
2008-2009 Updates to Valid Date Ranges	III-1-14
Direct Loan Fields Required for Origination	III-1-15
Direct Loan Ancillary Services	III-1-18
Direct Loan MPN, PLUS Credit Decision, and Disclosure Statement	III-1-19
System Options.....	III-1-26
EDEXpress for Windows	III-1-26
Combination EDEXpress/Custom System	III-1-27
Interface with Other Software Systems on Campus	III-1-27
Benefits to Using EDEXpress	III-1-27
PC Requirements for EDEXpress.....	III-1-28
The Basic Process for Combination Systems	III-1-29
Combination System Message Classes	III-1-31
Documents	III-1-31
Combination System Record Layouts	III-1-33
Imports.....	III-1-33
Pell External Imports	III-1-37
TEACH Grant External Imports	III-1-39
Direct Loan External Imports	III-1-39
External Exports (Pell, TEACH, and Direct Loan).....	III-1-47
File Formats	III-1-49
The Query Function.....	III-1-52
Combination System Edits	III-1-55
Example End-of-Entry Edits and Resolution Steps.....	III-1-55

HERA APPENDIX	III-1-62
The Higher Education Reconciliation Act (the HERA) of 2005.....	III-1-62
Academic Competitiveness Grant (ACG)	III-1-63
National SMART Grant.....	III-1-69
Graduate PLUS Loans	III-1-74
Additional EDEExpress 2008-2009 Functionality Related to the HERA	III-1-78
Where to Get More Information.....	III-1-80
TEACH GRANT APPENDIX	III-1-81
Teacher Education Assistance for College and Higher Education Grant	III-1-81
EDEExpress Setup Requirements for the TEACH Grant.....	III-1-83
COD Setup.....	III-1-83
Security Groups Setup.....	III-1-84
User Database Setup.....	III-1-84
COD Web Site Settings	III-1-85
Origination and Disbursement Add/Change	III-1-86
Origination Data Elements	III-1-86
Agreement to Serve (ATS).....	III-1-87
New TEACH Grant Functionality in EDEExpress.....	III-1-88
TEACH Grant Setup.....	III-1-88
TEACH Grant Entry	III-1-89
TEACH Grant Export Types	III-1-89
TEACH Grant Import Types	III-1-89
TEACH Grant Reports	III-1-90
TEACH Grant Query.....	III-1-91
TEACH Grant Browse and View	III-1-91

Enhancements to Existing EDEExpress 2008-2009 Functionality.....	III-1-92
Global Enhancements	III-1-92
Application Processing Enhancements.....	III-1-92
Packaging Enhancements	III-1-93
Pell Grant and Direct Loan Enhancements.....	III-1-94
EDEExpress COD Enhancements.....	III-1-94
Where to Get More Information	III-1-95

Overview

Welcome to Volume III of the *Common Origination and Disbursement (COD) Technical Reference*, written for users with Pell, TEACH Grant, or Direct Loan systems used in combination with EDEExpress.

This volume of the *COD Technical Reference* provides guidance, edits, and record layouts for using EDEExpress for Windows 2008-2009 (the free software package provided by the U.S. Department of Education) in combination with your own system or vendor-provided software.

As an EDEExpress user, you are a participant in the COD System's processing. As a COD System participant, also be sure to read Volume II (Common Record Technical Reference) of the *2008-2009 COD Technical Reference*.

Each volume of the *2008-2009 COD Technical Reference* is available for download from the U.S. Department of Education's Federal Student Aid Download (FSAdownload) Web site located at fsadownload.ed.gov as well as the Information for Financial Aid Professionals Web site (IFAP) located at ifap.ed.gov, as needed.

The Higher Education Reconciliation Act of 2005 (the HERA)

The Higher Education Reconciliation Act of 2005 (the HERA), Pub. L. 109-171, created two Title IV grant programs—the Academic Competitiveness Grant (ACG) and the National Science and Mathematics Access to Retain Talent Grant (National SMART Grant). The HERA also extends Federal Direct PLUS Loan (Direct PLUS) eligibility to graduate or professional students.

Note: The HERA provides for eligible graduate or professional students to receive Direct PLUS Loans on or after July 1, 2006. The HERA provision did not create a new loan program, but rather, allows a new type of borrower—an eligible graduate or professional student—to borrow under the existing Direct PLUS Loan Program. In EDEExpress, a Direct PLUS loan for a graduate or professional student is referred to as a “Grad PLUS” loan.

EDEExpress 2006-2007 and 2007-2008 were modified to add new ACG and National SMART Grant functionality and enhance existing Direct Loan functionality to enable Grad PLUS loan processing. In the EDEExpress 2008-2009 software we are continuing to implement software enhancements for ACG, National SMART Grant, and Grad PLUS data processing, as well as other changes related to the HERA.

For more information on EDEExpress 2008-2009 enhancements related to the HERA, see “The Higher Education Reconciliation Act (the HERA) of 2005” appendix at the end of this section.

TEACH Grant and Other Regulatory Changes

Through the College Cost Reduction and Access Act of 2007 (CCRAA), Congress created the Teacher Education Assistance for College and Higher Education (TEACH) Grant Program that provides grants of up to \$4,000 per year to students who intend to teach in a public or private elementary or secondary school that serves students from low-income families. Eligible undergraduate and post-baccalaureate students may receive up to an aggregate limit of \$16,000 and graduate students may receive up to a graduate aggregate limit of \$8,000 in TEACH Grants.

In exchange for receiving a TEACH Grant, students must agree to serve as a full-time teacher in a high need field in a public or private elementary or secondary school that serves low-income students. Recipients must teach for at least four academic years within eight calendar years of completing the program of study for which they received a TEACH Grant. If they don't complete this service obligation, all amounts of TEACH Grants received will be converted to a Federal Direct Unsubsidized Stafford Loan and interest charged from the date the grant(s) was disbursed.

Before receiving a TEACH Grant, a student must sign a TEACH Grant Agreement to Serve (ATS) for each year in which a TEACH Grant is awarded. The ATS explains the teaching service requirements that a student must meet in exchange for receiving a TEACH Grant, specifies the conditions under which a TEACH Grant will be converted to a Direct Unsubsidized Loan, and includes the student's agreement to repay the TEACH Grant as a Direct Unsubsidized Loan, with interest accrued from the date of each TEACH Grant disbursement, if he or she does not meet the requirements of the TEACH Grant Program. The ATS also provides information on the terms and conditions associated with repaying a TEACH Grant that is converted to a Direct Unsubsidized Loan.

For more information on EDExpress 2008-2009 enhancements related to the TEACH Grant, see the TEACH Grant Appendix at the end of this section.

The CCRAA also made changes related to late Direct Loan disbursements and maximum loan period/academic year length for Direct Loans. A Direct Loan disbursement can be no more than 180 past the loan period end date. The maximum length of the academic year and loan period have changed from 12 months to 36 months with a start date no later than 06/30/2009 or an end date no earlier than 07/01/2008.

What it Means to be a Combination User

As a financial aid administrator (FAA) at a combination school, you are aware of how complicated the entire financial aid process can be to manage. The COD System improves the flow of financial aid processing and can streamline the workload in your financial aid office.

The COD System continues to function using the basic process of schools submitting records and receiving responses. You can use EDEExpress in combination with your mainframe or third-party software to perform this task or part of this task with the COD System.

EDEExpress continues to use flat American Standard Code for Information Interchange (ASCII) files to communicate with your external systems. You import flat ASCII files into EDEExpress to load Pell, ACG, National SMART Grant, TEACH Grant, and Direct Loan data. In turn, EDEExpress exports your data to the COD System in the required Extensible Markup Language (XML) format.

After your data is processed, the COD System sends a response in XML format that can be imported into EDEExpress. You can then export the information you need to your mainframe or third-party software from EDEExpress in the ASCII flat file format.

Schools planning to use EDEExpress for Windows 2008-2009 to process Pell, ACG, National SMART Grant, TEACH Grant, or Direct Loan data must be enrolled as a participant with the COD System for the respective programs.

- You only need to enroll as a participant for Direct Loan, Pell, ACG, or National SMART Grant if you were not enrolled in the respective program in 2007-2008.

If you have any questions about enrolling with the COD System, contact the COD School Relations Center at 800/474-7268 for Grants or 800/848-0978 for Direct Loans. You can also e-mail CODSupport@acs-inc.com.

Organization of this Guide

This Implementation Guide is a reference to assist school FAAs who use EDEExpress for Windows software in combination with their mainframe system or third-party software to process Pell, ACG, National SMART Grant, TEACH Grant, and Direct Loan data. This guide also assists schools in implementing changes for the COD System for the 2008-2009 award year.

The following sections in Volume III contain pertinent combination system information:

- Section 2: Combination System Message Classes
- Section 3: Combination System Record Layouts
- Section 4: Combination System Edits

Enhancements and Changes to EExpress for 2008-2009

EExpress software has been enhanced to conform with annual changes to COD System, Pell, ACG, National SMART Grant, TEACH Grant, and Direct Loan processes. EExpress provides a common setup feature for the Pell (including ACG and National SMART Grant) and Direct Loan programs. Separate Pell (including ACG and National SMART Grant), TEACH Grant, and Direct Loan origination and disbursement windows display mutually exclusive data elements.

EExpress Pell, ACG, National SMART Grant, TEACH Grant, and Direct Loan users are participants in the COD process for 2008-2009. They send and receive origination and disbursement data to and from the COD System using the Common Record XML format.

If your school does not use EExpress for all of its Pell, ACG, National SMART Grant, TEACH Grant, or Direct Loan processing, you need to modify your processes using the 2008-2009 Pell, ACG, National SMART Grant, TEACH Grant, and Direct Loan Combination System record layouts to accommodate updates to fields and edits that are implemented within EExpress due to the COD System. Refer to Volume III, Section 3 (Combination System Record Layouts) of the *2008-2009 COD Technical Reference* for more information.

EExpress enhancements for the TEACH Grant are explained in the TEACH Grant Appendix at the end of this section.

We have implemented a number of enhancements in EExpress 2008-2009 that are not related to the HERA or CCRAA. These enhancements are listed below by module and software area:

Global

The following enhancements have been made to EExpress 2008-2009 Global functionality (applicable to all EExpress releases and modules):

- **Updated Cycle References and Message Classes.** We updated software labels, online help, reports, and other functionality throughout EExpress to reference the 2008-2009 cycle. Message classes with cycle indicators are also updated for 2008-2009 in File Management (**Tools, Setup, Global, File Management**) and in various Import and Export dialog boxes throughout EExpress.

Application Processing

The following enhancements have been made to the EDEExpress for Windows 2008-2009, Release 1.0 Application Processing module:

NSLDS View and Print

- **Relabeled Pell-Specific NSLDS Data Elements in View and Print.** In the NSLDS Financial Aid History dialog box, we updated the Pell label “% Scheduled Award Used” to “% Scheduled Award Used by Award Year.”
- **Added Loan-Specific NSLDS Flags to View and Print.** Three new loan-specific fields have been added to the NSLDS information returned in the ISIR record: “Undergraduate Subsidized Loan Limit Flag,” “Undergraduate Combined Loan Limit Flag,” and “NSLDS Fraud Loan Flag.” The fields appear in the NSLDS Financial Aid History dialog box (**View, NSLDS**) and on the printed ISIR.
- **Relabeled Loan-Specific NSLDS Flags in View and Print.** In the NSLDS Financial Aid History dialog box, we changed the label “Subsidized Loan Limit Flag” to “Graduate Subsidized Loan Limit Flag” and the label “Combined Loan Limit Flag” to “Graduate Combined Loan Limit Flag.”

Direct Loan

The following enhancements have been made to the EDEExpress for Windows 2008-2009, Release 2.0 Direct Loan module:

Import

- **Message Classes Updated for Entrance/Exit Counseling Results and Borrower Delinquency Report.** The message classes for the Direct Loan Entrance Counseling Results from Servicing Web site, the Direct Loan Exit Counseling Results from Servicing Web site, and the Direct Loan Delinquent Borrowers Report are now non-cycle-specific and will not change from year to year. The new message classes are as follows:
 - Entrance Counseling Results: **DECFENOP**
 - Exit Counseling Results: **DLFFEXOP**
 - Borrower Delinquency Report: **ED04DQOP**

Print

- **Calculation Logic for Origination/MPN Percentages Updated for List-Status Report.** When calculating the origination percentages and the MPN percentages that appear on the last page of the List-Status report, EDEExpress now uses the total number of student origination records printed on the report as the divisor.

Pell

The following enhancement has been made to the EDEExpress for Windows 2008-2009, Release 2.0 Pell module:

Origination Entry

- **Revised Warning Message for \$0 Award Amount for Entire School Year.** EDEExpress now displays the following warning message if you try to save a Pell Grant origination record with an Award Amount for Entire School Year of \$0: “The Award Amount for Entire School Year is zero. If this is an initial award, this record will reject at COD, since zero is not an acceptable award amount on an initial submission. If this is a correction and you are zeroing out a previous award amount, COD will accept this.”

Multiple Entry

- **Added Student’s First, Last Name to Pell Grant Multiple Entry.** The student’s first and last names appear on the Pell Grant Multiple Entry Select Records grids, making it easier for you to locate and select specific students you want to update.

Import

- **Added Pell Grant Data Elements to Year-to-Date (YTD) Files.** The new Pell Grant data elements Percent Eligibility Used by Schedule Award and Total Eligibility Used by Academic Year Level are included in the Pell YTD Data files. However, EDEExpress does not store or print these data elements or use them when generating the Compare and Print Exceptions? report.
- **Student’s First or Last Name Required in External Origination Add Records.** The student’s first or last name is now required in External Origination Add import records for Pell, ACG, and the National SMART Grant.

Print

- **Relabeled Fields on Pell Electronic Statement of Account (ESOA) Reports.** On the Pell ESOA, we relabeled “Pell School Number” as “Pell Reporting School Identifier” and “Common School Identifier” as “Entity Identifier.”

Query, File Formats, Browse

- **Added Grant Type to Query, File Formats, Browse.** The Grant Type field (ACG, Pell, or National SMART) can now be used in queries (Pell Query dialog box), exported in file formats (Pell File Format dialog box), and is now displayed in both the Origination and Disbursement tabs of the Browse Pell dialog box.

Note: For more information on EDEExpress 2008-2009 enhancements related to the HERA, see “The Higher Education Reconciliation Act (the HERA) of 2005” appendix at the end of this section.

Business Rules

The following issues may affect your combination system:

- 2008-2009 COD Message Class Options
- 2008-2009 Updates to Valid Date Ranges
- Direct Loan Fields Required for Origination
- Direct Loan Ancillary Services (for example, where to mail an MPN)
- Direct Loan MPN, PLUS Credit Decision, and Disclosure Statement

2008-2009 COD Message Class Options

The COD System provides various message class options for sending and receiving Common Record data to and from the COD System. The 2008-2009 Common Record Message class options include:

- Non-program specific and non-award year specific (current COMRECIN and COMRECOP)
- Award year specific and non-program specific (Option selected by EDEExpress)
- Program specific and non-award year specific
- Award year specific and program year specific

2008-2009 EDEExpress is using the award year specific message class option for sending and receiving Common Record data for Pell, ACG, National SMART Grant, TEACH Grant, and Direct Loan. These message classes are:

2008-2009 Message Class	Data Description
CRAA09IN	COD Common Record data sent to COD from EDEExpress
CRAA09OP	COD Response from COD to EDEExpress
CRRC09OP	COD Receipt from COD to EDEExpress

The award year specific message class option provides you the advantage of viewing the award year of the data within the Common Record file before importing the file into EDEExpress. EDEExpress is *not* using the options for program specific message classes.

In addition, the COD System sends all Web-generated and system-generated transactions such as a Pell negative disbursement or a Direct Loan MPN response to all schools in new award year specific message classes.

All message classes used by 2008-2009 EDEExpress are outlined for you in Volume III, Section 2 (Combination System Message Classes) of the *2008-2009 COD Technical Reference*. All COD message classes are outlined in Volume II, Section 2 (COD Message Classes) of the *2008-2009 COD Technical Reference*.

2008-2009 Updates to Valid Date Ranges

Valid date ranges for Pell, ACG, National SMART Grant, TEACH Grant, and Direct Loan processing are updated for the 2008-2009 processing cycle. These updates affect EDEExpress edits and valid field content. Below is the listing of updated 2008-2009 date ranges.

Pell, ACG, and National SMART Grants	TEACH Grant	Direct Loan	Data Element	Date Range
X			Enrollment Date	01/01/2008 to 06/30/2009
X			Payment Period Start Date	01/01/2008 to 06/30/2009
X			Disbursement Date	07/01/2008 to 09/30/2014 (Pell) 07/1/2008 to 09/30/2013 (ACG and National SMART Grant)
		X	Award Begin Date	06/30/2009 or earlier
		X	Award End Date	07/01/2008 or later
		X	Academic Year Start Date	06/30/2009 or earlier
		X	Academic Year End Date	07/01/2008 or later
		X	Disbursement Date	06/22/2007 to 12/26/2012
		X	Date of Birth	01/01/1909 to 12/31/2000
	X		Enrollment Date	01/08/2008 or later

Pell, ACG, and National SMART Grants	TEACH Grant	Direct Loan	Data Element	Date Range
	X		Pay Period Start Date	01/08/2008 or later
	X		Disbursement Date	01/08/2008 or later

Direct Loan Fields Required for Origination

Certain data must be present on a Direct Subsidized, Unsubsidized, PLUS or Grad PLUS Loan record before it can be originated in the EDExpress software. Listed below are the fields required for origination by loan type.

Note: It may be possible to save (but not originate) a loan record without all of these fields.

Field Name	Required for Origination of a PLUS	Required for Origination of a Grad PLUS	Required for Origination of a Sub/Unsub
Student's Last Name	✓ - if Student's First Name is blank	✓ - if Student's First Name is blank	✓ - if Student's First Name is blank
Student's First Name	✓ - if Student's Last Name is blank	✓ - if Student's Last Name is blank	✓ - if Student's Last Name is blank
Student's Permanent City		✓	✓
Student's Permanent State		✓	✓

Direct Loan Fields Required for Origination (Continued)

Field Name	Required for Origination of a PLUS	Required for Origination of a Grad PLUS	Required for Origination of a Sub/Unsub
Student's Current SSN	✓	✓	✓
Original SSN	✓	✓	✓
Student's Date of Birth	✓	✓	✓
Student's Citizenship Status	✓	✓	
Dependency Status	✓	✓	✓
CPS Transaction #			✓
School Code	✓	✓	✓
Loan ID	✓	✓	✓
Loan Amount Approved	✓	✓	✓
Disbursement Profile Code	✓	✓	✓
College Grade Level	✓	✓	✓
Loan Period End Date	✓	✓	✓
Loan Period Start Date	✓	✓	✓
Academic Year End Date	✓	✓	✓

Direct Loan Fields Required for Origination (Continued)

Field Name	Required for Origination of a PLUS	Required for Origination of a Grad PLUS	Required for Origination of a Sub/Unsub
Academic Year Start Date	✓	✓	✓
Student's Loan Default/Grant Overpayment	✓		
Borrower's Loan Default/Grant Overpayment	✓	✓	✓
Borrower's Date of Birth	✓		
Borrower's Permanent State	✓		
Borrower's Current SSN	✓		
Borrower's Permanent City	✓		
Borrower's Permanent ZIP Code	✓		
Borrower's First Name	✓ - if Borrower's Last Name is blank		
Borrower's Last Name	✓ - if Borrower's First Name is blank		
Borrower's Citizenship Status	✓		

Direct Loan Ancillary Services

Borrowers of Direct Subsidized, Unsubsidized, PLUS and Grad PLUS loans can complete a paper MPN or an electronic MPN at dlenote.ed.gov. If a borrower completes the electronic MPN, an MPN Response (CRPN09OP) is sent to the appropriate school. If a borrower completes a paper MPN, the MPN can be mailed directly to the COD System or returned to the school to forward to the COD System. The COD System must receive and accept the MPN before the loan is booked.

Hardcopy MPNs mailed to the COD System by the school must be accompanied by a paper manifest that lists the borrower's name and MPN Identification (ID) for each MPN in the shipment. The paper manifest also provides a certification to be signed by an official at the school.

For 2008-2009, schools continue to send batches of MPNs with paper shipping manifests to the following addresses:

Through Regular Mail:	Through Overnight, Express, or Certified Mail:
US Department of Education P.O. Box 5692 Montgomery, AL 36103-5692 1-800-848-0978	US Department of Education 201 TechnaCenter Drive Montgomery, AL 36117 1-800-848-0978

MPNs for subsidized and unsubsidized loans, MPNs for PLUS loans and MPNs for Grad PLUS loans must be batched separately and a separate paper manifest created for each. Each document can contain up to 100 notes. Additionally, separate documents (manifests) must be created for each Direct Loan school code. The MPN Manifest option is available through the EExpress Print process.

After a batch of MPNs is received in the mailroom, the notes are manually inspected for missing or incorrect information. A generic checklist is used. If there are errors or information is missing, the checklist is marked in the appropriate blank describing the error that needs to be corrected. The checklist and MPN are returned to the school or borrower, whichever is appropriate. If a note is rejected, a new MPN must be printed with the corrected data and resubmitted to the COD System.

After an MPN is processed by the COD System, you receive an MPN Response which includes the MPN status and can be used to update EExpress.

Note: More information on MPN processing can be found in Volume II (Common Record Technical Reference) of the *2008-2009 COD Technical Reference*. You may want to become familiar with all volumes of the *2008-2009 COD Technical Reference* to gain a full understanding of the COD System.

Direct Loan MPN, PLUS Credit Decision, and Disclosure Statement

This section describes the EExpress processes regarding Direct Loan MPN multi-year and single year notes, as well as the PLUS credit decision, and the disclosure statement.

Note: MPNs, MPN Manifests, credit decisions, and disclosure statements for Grad PLUS loans are processed following the same rules and guidelines as PLUS loans for parent borrowers.

Immediate Attention Needed: A revised Direct PLUS Loan MPN is available for users as of October 2007. EExpress 2008-2009 Release 2.0 prints PLUS MPNs using the revised form. You should discontinue using the PLUS MPN addendum and all paper PLUS MPN forms printed prior to October 2007 and begin using the revised form *immediately*.

The same Direct PLUS MPN form is used for both Grad PLUS and PLUS loans. When you select the report type to print, the following statements print in Section A:

Report Type	Printed Statement
MPN-PLUS	I am a Parent of a Dependent Undergraduate Student
MPN-Grad PLUS	I am a Graduate or Professional Student

Note: Refer to the Implementation Guide found in Volume II (Common Record Technical Reference) of the *2008-2009 COD Technical Reference* for complete details regarding Direct Loan Master Promissory Notes.

Determining the MPN Status for Subsidized/Unsubsidized Loans When Using the Multi-Year MPN Feature

For subsidized/unsubsidized loans processed using the multi-year feature, determining the MPN status is a two-step decision-making process within EExpress.

First, EExpress checks for other existing originated subsidized or unsubsidized loans for the student. When another loan exists within EExpress for a student, EExpress reviews the MPN status of the existing loan.

IF...	THEN...
The MPN status of the existing loan indicates a valid MPN exists or assumes a valid MPN exists (A, P, S, M, or T)	EDEExpress updates the MPN status of the originating loan to T , assumes a valid MPN exists
The MPN status of the existing loan indicates no valid MPN exists (R or N)	EDEExpress sets the MPN status of the originating loan to R , ready to print, and a new MPN can be printed

EDEExpress MPN Statuses: **N:** Not ready to print (Sub/Unsub only), **R:** Ready to print, **P:** Printed or request to print sent to COD, **S:** Signed & returned (available when current value is P), **M:** Manifested, **A:** MPN Accepted by COD, **X:** MPN Pending, **T:** MPN Exists (available when current value is N, R, P, S or M)

When no other loans for a student exist within EDEExpress, EDEExpress reviews the ISIR Direct Loan MPN flags if ISIRs were imported into EDEExpress.

IF...	THEN...
The ISIR Direct Loan MPN flag indicates an active MPN at the COD System (A)	EDEExpress updates the MPN of the originating loan to T , assumes a valid MPN exists
The ISIR Direct Loan MPN flag is blank or indicates no valid MPN (I, C, N, or U)	EDEExpress sets the MPN status of the originating loan to R , ready to print, and a new MPN can be printed

ISIR Direct Loan MPN Flag: **A:** Active, **I:** Inactive, **C:** Closed, **N:** None or Unavailable, or **U:** Updated

Determining the MPN Status for PLUS Loans When Using the Multi-Year MPN Feature

For PLUS and Grad PLUS loans processed using the multi-year feature, a school can set the MPN status to **T** either manually or through multiple entry in EDEExpress. The MPN status of **T** is used to indicate you assume an MPN is on file at the COD System for the borrower. When the MPN status is set to **T**, EDEExpress does not require the printing of an MPN for that PLUS or Grad PLUS loan. Upon importing the COD Response for an accepted PLUS or Grad PLUS loan, EDEExpress is updated with the MPN status on file at the COD System.

Single-Year MPN Feature

The single-year feature is available to all schools and requires that a new MPN must be completed by a borrower for each academic year. All schools *not* eligible to process MPNs using the multi-year feature must use the Single-Year feature. Schools eligible for the multi-year feature can opt to process MPNs using the single-year feature. The school's processing feature is updated in EDEExpress setup and on the COD System Web site.

A single-year school must use an MPN generated at or for that school only. A single-year school can link multiple loans for the same academic year, for the same student, to the same MPN. The academic year start and academic year end dates must be the same on all loan records linked to a specific MPN.

On the Response, there is an MPN link indicator for subsidized/unsubsidized/PLUS/Grad PLUS loans. If the loan record has been linked to an MPN at the COD System, the MPN link indicator contains a **Y**. Loan records not linked to an MPN on file at the COD System have an **N**, in the MPN link indicator field.

Determining the MPN Status When Using the Single-Year MPN Feature

When processing loans using the single-year feature, EDEExpress looks for other originated loans for the student with the same academic year within EDEExpress to determine the MPN status.

IF...	THEN...
No other loans exist for this student within EDEExpress	EDEExpress sets the MPN status of the originating loan to R , ready to print and a new MPN can be printed
Another loan exists and the academic year start and end dates do <i>not</i> match the loan being originated	EDEExpress sets the MPN status of the originating loan to R , ready to print and a new MPN can be printed
Another loan exists and the academic year start and end dates match the loan being originated, EDEExpress reviews the MPN status of the existing loan: If the MPN status of the existing loan indicates a valid MPN exists or assumes a valid MPN exists (A, P, S, M, or T) If the MPN status of the existing loan indicates no valid MPN exists (R or N)	EDEExpress updates the MPN status of the originating loan to T and assumes a valid MPN exists EDEExpress sets the MPN status of the originating loan to R , ready to print, and a new MPN can be printed

N: Not ready to print (sub/unsub only), **R:** Ready to print, **P:** Printed or request to print sent to COD, **S:** Signed & returned (available when current value is P), **M:** Manifested, **A:** MPN Accepted by COD, **X:** MPN Pending, **T:** MPN Exists (available when current value is N, R, P, S or M)

Note: For schools implementing single-year functionality the ISIR Direct Loan MPN flag is not used in the process to determine if a new MPN should be printed since a previous year’s MPN is not relevant.

Single-Loan MPN Feature

The single-loan MPN is an MPN linked to a PLUS or Grad PLUS loan that is accepted with an eligible endorser who has an approved credit decision. After an endorser is associated with a PLUS or Grad PLUS loan, the MPN linked to that PLUS or Grad PLUS loan cannot be linked to any other loans even if the school uses the multi-year MPN feature. The MPN status for a single-loan MPN is determined by the COD System.

When a PLUS or Grad PLUS loan with an endorser is linked to an MPN, the COD System returns an MPN status of accepted on the Response. After the single-loan MPN is established, it becomes an inactive MPN and no other loans can be linked to that same MPN. In addition, all other pending or active PLUS MPNs for the borrower become inactive at the COD System. Future ISIRs display an MPN status of inactive and a new MPN must be completed if the borrower wants to borrow a subsequent PLUS loan.

Importing the MPN Status from the COD System

Both the Common Record Response (CRAA09OP) and the MPN Response (CRPN09OP) can contain the MPN status determined by the COD System for a loan record. When the loan is accepted by the COD System, the COD System links the loan to an existing MPN, if possible.

Upon import of the Common Record Response (CRAA09OP), EDEExpress updates the MPN status of a loan record according to the following logic:

IF The COD System's MPN Status Imported is:	AND EDEExpress MPN Status is:	THEN EDEExpress Updates to:
A = Accepted MPN at the COD System	Any MPN status	A = Accepted by the COD System
R = Rejected or MPN not on file	T = MPN Exists *	R = Ready to print
X = Pending MPN at the COD System	T = MPN Exists *	R = Ready to print

* **Note:** Upon import of a Common Record Response with a COD System MPN Status of **R** or **X**, the EDEExpress loan record's MPN status is updated to **R** *only* if the loan record's existing MPN Status is **T**. If the EDEExpress MPN Status is a value other than **T**, the record is not updated as a result of importing a Common Record Response with a COD System MPN Status of **R** or **X**.

Upon import of the MPN Response (CRPN09OP), EDEExpress updates the MPN status of a loan as follows:

IF The COD System's MPN Status Imported is:	AND EDEExpress MPN Status is:	THEN EDEExpress Updates to:
A = Accepted MPN at the COD System	Any MPN status	A = Accepted by the COD System
R = Rejected or MPN not on file	M = Manifested * Or T = MPN Exists *	R = Ready to print
X = Pending MPN at the COD System	M = Manifested *	X = Pending at the COD System

* **Note:** When importing an MPN Response with a COD System MPN Status of **R**, the EDEExpress loan record's MPN status is updated to **R** *only* if the loan record's existing MPN Status is **M** or **T**. When importing an MPN Response with a COD System MPN Status of **X**, the EDEExpress loan record's MPN status is updated to **X** *only* if the loan record's existing MPN Status is **M**.

Valid MPN

An open MPN is valid for up to ten years from the date the MPN is received by the COD System if at least one actual disbursement is made within a year from the date the COD System received the MPN and the borrower has not closed the note.

Note: If at least one actual disbursement is *not* made on any of the loans linked to an MPN within twelve months, the MPN becomes inactive on the COD System.

Note: The MPN Expiration Date is now returned in the Common Record Response file (CRAA09OP) or the MPN Response file (CRPN09OP) by the COD System. When the MPN Expiration Date exists in the imported response file, EDEExpress displays the date on the Direct Loan Origination in the MPN Information section of the Loan Info tab.

To close an MPN a borrower must send a written request to the Direct Loan Servicing or to the school. If the closed notification is received at the school, the school must forward the original documentation to the COD School Relations Center. Upon receipt of a written request, the COD System manually closes the MPN and sends a confirmation letter to the borrower. After an MPN has been closed, no new loans can be linked to it. Loans that are already linked to a closed MPN can continue to use that MPN for disbursement processing. A new MPN must be generated if

new loans are to be originated. When a loan is processed by the COD System and all MPNs for the borrower on file at the COD System are closed, an MPN status of **R** (MPN not on file) is returned in the Response to the school.

PLUS Credit Decision Status

When importing a Common Record Response (CRAA09OP) for a PLUS or Grad PLUS loan, the PLUS credit decision status for the loan is updated in EExpress. A PLUS or Grad PLUS loan is not linked to an MPN until the borrower has an accepted PLUS credit decision status. PLUS credit decision statuses are A = Accepted, D = Denied, and P = Pending.

When a PLUS or Grad PLUS borrower requests a credit decision override or submits an Endorser Addendum, a Credit Decision Override Response (CRCO09OP) is generated by the COD System to communicate the updated credit decision status.

Note: As with a PLUS loan for a parent borrower, schools can perform a credit check for a Grad PLUS borrower on the COD System's Web site. After the credit check has been done, schools may enter an **A** (Credit approved) or **F** (Credit denied; credit decision received from COD web site).

Valid values for the PLUS credit decision override code are:

C = Credit overridden as a result of new credit information provided

E = Credit overridden as a result of an endorser's approval

D = Credit denied as a result of an endorser's denial

N = Credit denied after pending.

When the credit decision status is updated to "Accepted," the COD System attempts to link the PLUS or Grad PLUS loan to an MPN. If the loan is linked to an MPN, an MPN Response (CRPN09OP) is generated to communicate the updated MPN status. Upon importing the Credit Decision Override Response file, EExpress updates the PLUS credit decision status for the PLUS or Grad PLUS loan. Upon importing the MPN Response file, EExpress updates the MPN status for the PLUS or Grad PLUS loan.

Refer to Volume II (Common Record Technical Reference) of the *2008-2009 COD Technical Reference* for additional information regarding requesting a PLUS credit decision or appealing a PLUS credit decision.

Generating Disclosure Statements

Disclosure Statements are required for all loan types (subsidized, unsubsidized, PLUS, and Grad PLUS loans) and can be printed by the COD System or a school.

EDEExpress provides the capability to print Disclosure Statements for subsidized, unsubsidized, PLUS, and Grad PLUS loans. When the school prints a Disclosure Statement, the disclosure statement print indicator value of O = Onsite (school prints) within EDEExpress is translated to a disclosure statement print code of **S** (school prints and sends to borrower) in the Common Record export file that you send to the COD System.

Refer to the Implementation Guide found in Volume II (Common Record Technical Reference) of the *2008-2009 COD Technical Reference* for complete details regarding Generating Disclosure Statements.

System Options

To help you decide how best to incorporate EDExpress for Windows, consider the following questions.

Grant and Loan Volume	How large is the grant and loan volume at your school?
Available Resources	How much of the following resources are available: staff, data processing resources, equipment, and money?
Existing Systems	What existing systems are in place and how easy are they to integrate?
Time Constraints	Is there enough time available to develop a system?
Campus Communications	Are there existing means of communication between offices involved in the Direct Loan Program or the Federal Pell Grant Program? (These offices could include financial aid and bursars.)

The U.S. Department of Education gives you maximum flexibility in fashioning a system solution that best meets your school's needs. As a combination school, you should consider the following options:

EDExpress for Windows

EDExpress for Windows is a comprehensive financial aid management system provided at no cost by the U.S. Department of Education.

The system is student-based and enables you to process federal application data, including loading and printing Institutional Student Information Records (ISIRs) received electronically from the CPS ISIR Datamart and viewing and correcting individual ISIRs through FAA Access to CPS Online.

It also computes student award packages, maintains funds, tracks file documents, generates reports, establishes Pell, ACG, National SMART Grant, TEACH Grant, and Direct Loan origination records, prints MPNs, and manages and reports Pell, ACG, National SMART Grant, TEACH Grant, and Direct Loan disbursement data.

EExpress supports all the necessary tasks required to participate in the Federal Pell Grant Program and the William D. Ford Federal Direct Loan Program, the ACG and National SMART Grant programs established by the HERA and the TEACH Grant Program established by the CCRAA. Schools using this software can refer to the Desk References and HERA Addendum for Pell, Direct Loan, ACG, and National SMART Grant or the online Help in EExpress for assistance.

EExpress and its desk references along with other documentation are located on the fsadownload.ed.gov Web site.

Combination EExpress/Custom System

You can use any of the processing functions provided by EExpress in conjunction with external systems or software from another vendor.

EExpress enables you to import data captured in other on-campus systems (for example, a financial aid packaging system). You can also export data needed by other on-campus systems (such as the school's business office) from the EExpress database.

Interface with Other Software Systems on Campus

Your other school computer systems, used for registration or accounting, are potential providers of data to EExpress. EExpress is designed to import data captured in other systems and reformatted according to specifications provided in this technical reference. Likewise, data in EExpress can be exported for use in other on-campus systems.

Benefits to Using EExpress

If you currently use another system for Pell, ACG, National SMART Grant, TEACH Grant, and Direct Loan processing, consider that 2008-2009 EExpress for Windows:

- Is fully XML-compliant, allowing you to exchange data with the COD System
- Automatically translates flat files you import from your mainframe or third-party software and creates export files you can transmit to the COD System
- Can automatically convert XML records from the COD System to flat ASCII format, which you can then export for import into your mainframe or another system on campus
- Offers a powerful, structured query language (SQL)-based query function for extracting data

- Offers a user-friendly Windows interface
- Is proven to work well in combination with mainframe systems
- Is backed by expert technical support

PC Requirements for EExpress

For PC requirements, see the *Installation Guide for EExpress for Windows* (year specific), located on the fsadownload.ed.gov Web site or contact CPS/SAIG Technical Support at **800/330-5947** (TDD/TTY 800/511-5806) or CPSSAIG@ed.gov.

The Basic Process for Combination Systems

As you review your processing methods and current use of EDEExpress, or if you are considering using EDEExpress, ask these questions:

- What is the source of my data?
- How will I synchronize updates to the data between EDEExpress and the mainframe or my other financial aid management software?
- How will I synchronize updates to the data my office shares with other offices on campus?

Every combination school's processing environment is unique. As a simple example, the steps for processing Pell, ACG, National SMART Grant, TEACH Grant, and Direct Loan records with EDEExpress and the COD System in a combination system environment could be similar to these:

1. In EDEExpress, import an ASCII file of records from the mainframe using the **Import External Add** function.
2. Update records in EDEExpress by importing an ASCII file from the mainframe using the **Import External Change** function.
3. For Direct Loan, create or verify MPNs if needed. These MPN statuses can come from the External Add or Change files.
4. Export the information from EDEExpress (data is automatically translated to XML format) to the COD System for origination through the Student Aid Internet Gateway (SAIG).
5. Receive Common Records Receipts and Responses from the COD System through the SAIG.

Note: The COD System sends one Response document for each Common Record document submitted.

For Common Record Responses processed by the COD System and received through the SAIG mailbox, schools can receive a Full or Standard Response. However, EDEExpress always requests and receives Full Responses from the COD System. A Full Response contains all the original tags sent by the school and the rejected data elements and reason codes. A Standard Response contains only the rejected data elements and reason codes.

The request that EDEExpress sends in the Common Record for a Full Response overrides the school's option set on the COD System's Web site. For example: If you set your school option to receive Standard Response and you send your data to the COD System using EDEExpress, the COD System is going to return a Full Response.

Note: All Web-generated Responses are Full Responses.

For further information, record layouts, and processes, see Volume II (Common Record Technical Reference) of the *2008-2009 COD Technical Reference*.

6. Import the Receipts and Responses into EDEExpress.
7. If the originations and MPNs were submitted successfully and accepted, disburse funds to the students.
8. Export information to the COD System.
9. Use the Query function in EDEExpress to extract student information from the records and print the information to a file for the bursar's office.
10. Export the updated records to an ASCII file from EDEExpress using the Export External function.
11. Load the file of updated records to your mainframe or third-party software.
12. Make changes to the student records, if corrections are needed.

Note: The Pell External Import Change process, which also applies to ACG and National SMART Grant records, only requires those fields that are to be modified and a few key fields to be imported into EDEExpress. Any fields not modified are to be submitted as filler. The External Add/Change Record Layout is updated to allow filler in any non-modified field. For more information, refer to Volume III, Section 3 (Combination System Record Layouts) of the *2008-2009 COD Technical Reference*.

Combination System Message Classes

Volume III, Section 2, of the *2008-2009 COD Technical Reference* provides the 2008-2009 Pell, ACG, National SMART Grant, TEACH Grant, and Direct Loan EDEExpress message classes.

Documents

The origination and disbursement process begins when a participant in the COD System submits a Common Record to the COD System. For the 2008-2009 award year, the Common Record is submitted in one of two ways:

- Document submission (**Note:** This is the option for EDEExpress users.)
- Online submission using the COD System's Web site

EDEExpress, in combination with EDconnect and the SAIG, enables users to participate in the COD System using the document submission process. For questions regarding the online submission using the COD System's Web site, refer to Volume II (Common Record Technical Reference) of the *2008-2009 COD Technical Reference*.

Common Record Document Submission

All Common Record documents are submitted to the COD System's SAIG mailbox. The Enterprise Application Integration Bus (EAI Bus) performs periodic data pickups from the COD System's SAIG mailbox and transmits the Common Record data to the COD System.

EDEExpress continues to export Pell, ACG, National SMART Grant, TEACH Grant, and Direct Loan files with document headers and trailers. The document header contains a Document ID that is unique to the export document.

For more information regarding transmitting to SAIG, see the *SAIG Host Communication Guide* on the fsadownload.ed.gov Web site.

The Document Integrity Rule

EDEExpress requires document integrity. As a result, the COD System returns a response for every Pell, ACG, National SMART Grant, TEACH Grant, or Direct Loan record submitted by the school. If a school submits a document with 1,000 Pell records, the COD System returns a response corresponding to only those 1,000 records. The response file always contains the same document ID originally submitted by the school.

Tracking Document IDs

Schools should track document IDs on their systems. The EDEExpress software provides document-level tracking capability through the Browse function located within the Tools menu option. You can track submissions to the COD System with the Document Activity grid through this system option. Submissions to the COD System can have Pell-only data, DL-only data, TEACH-only or any combination of Pell, TEACH and DL data.

Note: ACG and National SMART Grant data can be included using existing Pell export options, while Grad PLUS loan data can be included as part of existing DL export options.

All document IDs transmitted to the COD System using EDEExpress have the same format. The format is CCYY-MM-DDTHH:mm:ss.ff99999999.

The first segment of the document ID identifies the date the document was exported from EDEExpress. The date is represented in CCYYMMDD format.

- CC = Century
- YY = Year
- MM = Month
- DD = Day

Next in the document ID is a **T** as a date/time separator followed by the document time identifying when the document was exported from EDEExpress. The time is represented in a HH:mm:ss.ff format.

- HH = Hour
- mm = Minutes
- ss = seconds
- ff = hundredths of a second

The characters that follow reflect the school's assigned eight-digit Source Entity ID from the COD System setup. The Source Entity ID is randomly generated and assigned to schools by COD.

Note: The manifest document ID is also tracked in the Document Activity Grid but it uses the Reporting Entity ID, not the Source Entity ID.

Note: The Combination System Message Class table, along with other message class information, is found in Volume III, Section 2 (Combination System Message Classes) of the *2008-2009 COD Technical Reference*.

Combination System Record Layouts

Interfacing your school's system with EDEExpress for Windows reduces the effort of preparing data by importing student data from your existing systems into EDEExpress. You can also take advantage of the built-in edits in EDEExpress to ensure that your records contain valid data. After processing Pell, ACG, National SMART Grant, TEACH Grant, or Direct Loan records with EDEExpress, you can create a customized export file to share the data with your school's other systems.

Volume III, Section 3 (Combination System Record Layouts) of the *2008-2009 COD Technical Reference* contains the record layouts that enable you to use EDEExpress for Windows in combination with your school's software to process Pell Grant, ACG, National SMART Grant, TEACH Grant, and Direct Loan data.

Imports

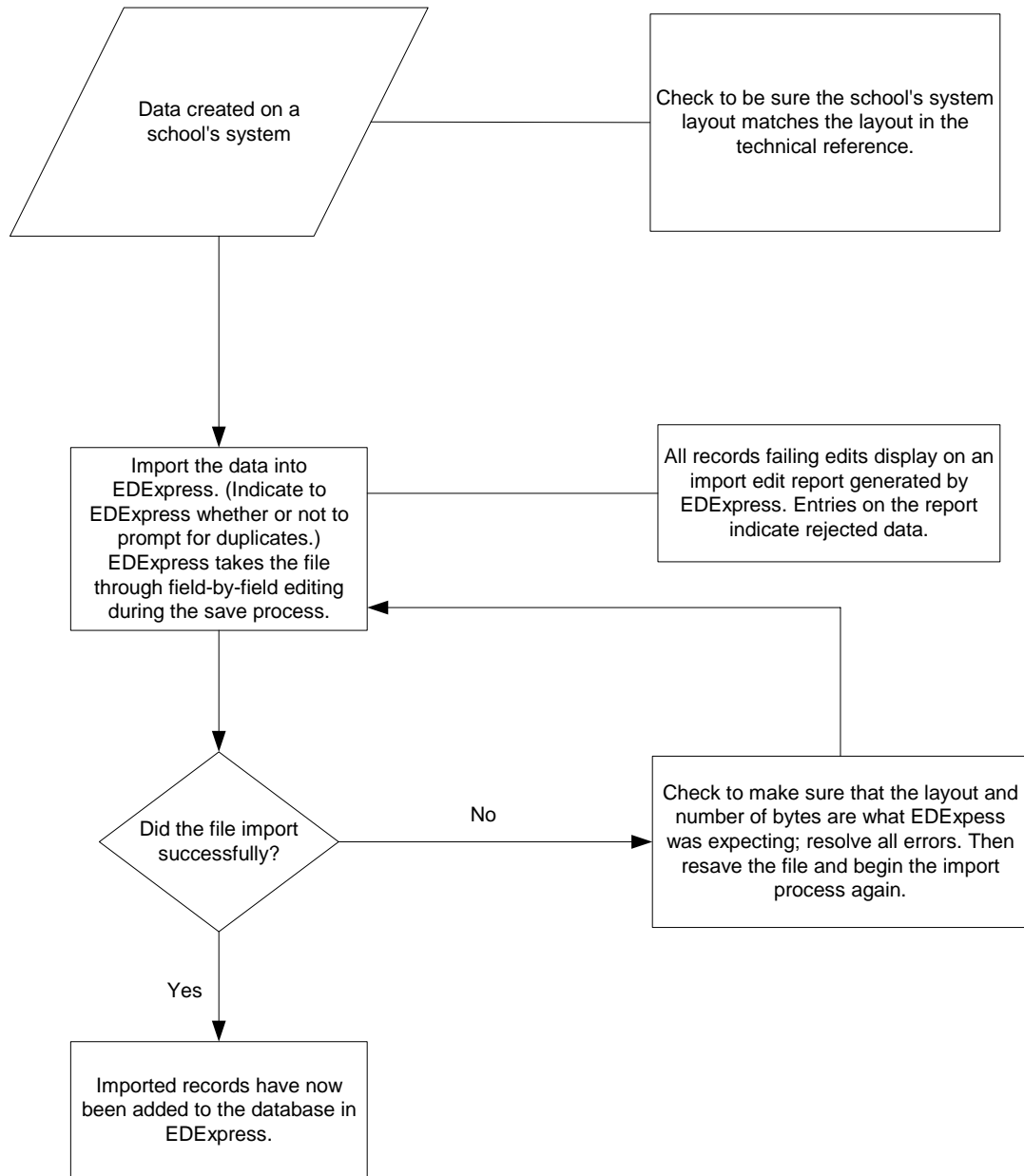
The import process enables you to quickly add and update both origination and disbursement records using a combination of EDEExpress and your school's system or third-party software. Remember, to import data from another system to EDEExpress, you must format the data according to the record layouts in Volume III, Section 3 (Combination System Record Layouts) of the *2008-2009 COD Technical Reference*.

EDEExpress receives data from external systems without a header and trailer record but does require ASCII format, with the end of each record marked with carriage return/line feed characters (ASCII 13 and 10). After the last record there is no end of file marker (EOF), only the final carriage return/line feed marker.

Note: If the file is incorrectly formatted without the carriage return/line feed, the import fails and the following error message displays: *Invalid Record Length*. You are given the record size of the import file.

The figure on the next page shows the External Import process.

External Import



Import External Add or External Change Records

The basic steps for importing external data into EDExpress for Windows are:

1. Select **File, Import** from the menu bar.
2. Click the tab of the module you want to use, Pell or Direct Loan.
3. Click the down arrow on the import type box to display a list of file types to import.
4. Select the file type.

For Pell, ACG, or National SMART Grant, choose **Origination Data – External** or **Disbursement Data – External**.

For Direct Loan, choose **Loan Data – External Add** or **Loan Data – External Change**.

For TEACH Grant, choose **External TEACH Grant Data**.

5. Confirm that the default filename and data directory you established in setup appears in the **Import From** box.

Or, if you want to import from a different filename, click the **File** button to locate and name the file, then click **OK**. EDExpress enters the filename in the box automatically.

6. Click **Printer, File, or Screen** as the report output destination.

If you want to send the report to a file, click the **File** button to locate and name the file, then click **OK**. EDExpress enters the filename in the box automatically. Remember that if you print to a file, no hard copy prints on your printer. To print a hard copy, you need to either open the printed file and print *or* reimport the file and select **Printer** as your output destination.

7. Click **Y** for Yes at the Prompt for Duplicates option if you want EDExpress to display the IDs for records that are duplicates of those already in your database. If you are importing external change records for Direct Loan, skip this step.
8. Click **OK** to import the file and send the report to the destination you chose. The Database Load Statistics dialog box appears.
9. Click **OK** to close the Database Load Statistics dialog box. If you chose screen as your output destination, use the scroll bars to view and click **OK** when you are finished.
10. Review the results. If errors occurred, correct them in your import file, resave the file, and import the file again.

Prompt for Duplicates

If you want to be warned when EDEExpress encounters a record in the database with the same ID as a record being imported, select the Prompt for Duplicates checkbox in the Import dialog box.

With the prompt for duplicates option selected, EDEExpress prompts you for the following actions when it encounters a duplicate record:

- **Skip?** This option skips the current record and the import process advances to read the next record in the file. No updates are made to the current record.
- **Skip All?** This option skips the current record and all other duplicates without notification. No updates are made to any of the duplicate records that are found. EDEExpress does not prompt you when it finds duplicates during the process
- **Update?** This option prompts you to update the current record and continues processing with the next record. The update option processes the current record, then advances to the next record and prompts you again when another duplicate record is found.
- **Update All?** This option updates the current record and all other duplicate records throughout the process without warning you of duplicate records found.

Note: If you do not select the prompt for duplicates checkbox, EDEExpress automatically skips duplicate records.

Import Edits for Valid Values

As the import progresses, all records are passed through field-by-field edits. EDEExpress checks each field for valid content. If any field fails an edit, the record is rejected. The fields causing the rejection and appropriate invalid value messages are displayed on the Import Edit report.

All records that successfully pass the valid values edits are saved in the EDEExpress database.

End-of-Entry Edits

During the External Import process, EDEExpress passes the data through end of entry edits. If an edit is hit, an error message appears on the Import Edit report at the end of the process. You can also see “Invalid Value” errors on this same edit report. If this type of error appears, go to the data element in the record layout and refer to the valid values column for help in resolving the error.

Correcting Errors

Invalid or missing data must be updated on the external system. You must then recreate the External Add or Change record and reimport it into EDEExpress.

If you are importing only to add previously rejected records, you can reuse the original import file after updating the rejected records. You do not need to remove the previously accepted records from the import file. EDEExpress skips these records unless you select the prompt for duplicates checkbox to choose a different action.

As with the original import, the corrected records run through the edits again. If they pass all edits, EDEExpress saves them in the database. The correction and reimport process can be repeated until all errors are resolved.

Note: The TEACH Grant and Pell External Import Change process, which also applies to ACG and National SMART Grant records, only requires those fields that are to be modified and a few key fields to be imported into EDEExpress. Any fields not modified are to be submitted as filler. The External Add Record Layout is updated to allow filler in any non-modified field. Refer to Volume III, Section 3 (Combination System Record Layouts) of the *2008-2009 COD Technical Reference*.

Import Edit Report

An Import Edit report is created for each file of imported records. This report identifies rejected records and provides statistics on the number of records added in the database.

Pell External Imports

This section contains information on processing Pell awards using EDEExpress in combination with your school's system.

After you enter your Reporting and Attended Entity IDs and your Reporting and Attended Pell ID in EDEExpress, you can import external origination or external disbursement files from another system. Records can be set to ready to batch when you import these external files.

External Origination Add/Change Record

The Pell Grant, ACG, and National SMART Grant External Origination Add/Change record layout designates the data elements that are required for the origination record type. External automated systems use this layout to add and change origination award records in your EDEExpress database. The detail of each record is based on a set of predefined field elements. Create the file using the PGEO09OP message class so that it can be imported into EDEExpress.

Note: Changes to the Origination record use the same record layout and apply to the entire award period.

Note: The Pell External Import Change process, which also applies to ACG and National SMART Grant records, only requires those fields that are to be modified and a few key fields to be imported into EDEExpress. Any fields not modified are to be submitted as filler. The External Add Record Layout is updated to allow filler in any non-modified field. Refer to Volume III, Section 3 (Combination System Record Layouts) in the *2008-2009 COD Technical Reference*.

External Disbursement Add/Change Record

The Pell Grant, ACG, and National SMART Grant External Disbursement Add/Change record layout designates the data elements that are required for the disbursement record type. External automated systems use this layout to add and change disbursement records in your EDEExpress database. The detail of each record is based on a set of predefined field elements. Create the file using the PGED09OP message class so that it can be imported into EDEExpress.

Note: Use the same record layout to add new Pell Grant, ACG, and National SMART Grant disbursement records or modify existing disbursements for these grant types.

Include Records in Next Document Submission

If you select **Include Records in Next Document Submission** in the Import dialog box, EDEExpress applies end-of-entry edits to the origination records. They are reviewed for the integrity of their content before they are saved in the Pell database. The origination status of all records that meet the conditions of all required edits is then set to **R** (ready to export).

Records that contain inadequate information are rejected and the import report displays the details of the failed edit condition. Users are not able to set the record to an **R** status until it is changed to conform to edit specifications.

If you do not select **Include Records in Next Document Submission**, you must use the multiple entry feature in EDEExpress or set the origination records to **R** one at a time. See the online Help in EDEExpress for information on multiple entry.

Disbursement records that successfully pass valid field content edits are systematically added in the Pell database at the **R** (ready) status.

Resolving Edits

To resolve field-by-field edits or data element edits, refer to the valid values column in the record layout and the End-of-Entry Edits table at the end of this section.

Import Edit Report

At the completion of the import process, an Import Edit report is generated. The Import Edit report gives record level detail as well as summary information for the outcome of the import file. The following statuses are printed in summary at the end of the report:

Row Heading	Description	Status
Records Added	Total of first time records added	A
Records Read	Total of all records read	N/A
Records Updated	Total of records changed	U
Records Rejected	Total of records with errors	E
Records Skipped	Total of records disregarded	S

Note: The Import Edit report statistics reflect totals for all records for all grant types. For example, if your import file adds 10 Pell records, 10 ACG records, and 10 National SMART Grant records to EDEExpress, the Import Edit report's Records Added field indicates 30 records.

TEACH Grant External Imports

See the TEACH Grant Appendix at the end of this section.

Direct Loan External Imports

This section contains information on importing and processing Direct Loans using EDEExpress in combination with your school's system.

Note: In the COD System process, the award ID is the loan ID.

External Import Add

When importing new records into the Direct Loan database in EDEExpress, you must create a file of borrower records according to a standard file layout. See the External Import Add record layout in Volume III, Section 3 (Combination System Record Layouts) of the *2008-2009 COD Technical Reference* for layout and file creation specifications. Create the file using the DIEA09OP message class so that it can be imported into EDEExpress.

If the record passes reject editing and a loan ID is not specified in the import file, the loan record is added in the EDEExpress database and a 21-digit loan ID is assigned. The loan ID is important

to systems interfacing with EDEExpress, because it is needed when making changes to existing records.

When a loan record is imported, EDEExpress searches for records with an identical student SSN, loan type, program year, and Direct Loan school code. If there is no match, EDEExpress assigns 001 as the loan sequence number.

More about the Loan Data Add File Layout

Certain borrower information is required before you can save a loan record. This information includes data about the borrower such as the name and date of birth. In addition, it includes information specific to the loan, such as the loan amount approved, loan period start and end dates, and assumed MPN status. When creating the import file, refer to and adhere to the column marked “Required Field to Save Record” in the External Import Loan Origination Add file (DIEA) record layout.

EDEExpress automatically performs the origination process for all records containing all of the required origination fields. This step is performed during the import process for all records with a loan origination status of N (not ready to send to COD). For more information on origination record data that must be entered in EDEExpress to perform the origination process for a given loan type, see the section “Direct Loan Fields Required for Origination” earlier in this document.

If your school chooses to fill field #1 with a pre-assigned loan ID, you can assign any loan sequence number (001 to 999). However, we strongly recommend that you start the loan sequence number creation with 001 and do not start with 101.

External Import Change

This type of import enables you to submit changes from your school’s systems to the EDEExpress Direct Loan database. To do this, as with originations, you must create a file of borrower records according to a standard file layout. Use the External Import Change record layout and the table of Loan Origination Import Change Field Numbers to create your change record. These can be found in Volume III, Section 3 (Combination System Record Layouts) of the *2008-2009 COD Technical Reference*.

Create the file using the DIEC09OP message class so that it can be imported into EDEExpress.

Each record must contain the borrower’s loan ID, the field number of the field to be updated, and the updated value.

To import most efficiently, you should import the records in Social Security Number order, and the fields to be updated within each change record should appear in numerical order. For example, if you are changing fields S013 (borrower’s telephone number) and S101 (student’s local address city), field S013 should appear first in the change record, followed by field S101.

Each change record contains space for up to 10 data element changes. Multiple change records can be imported for a loan ID if more than 10 changes are required. When additional change records are included in the file for the same loan ID, the Sequence Number (position 22 to 26) must be incremented by one for each record.

Formatting Corrected Values

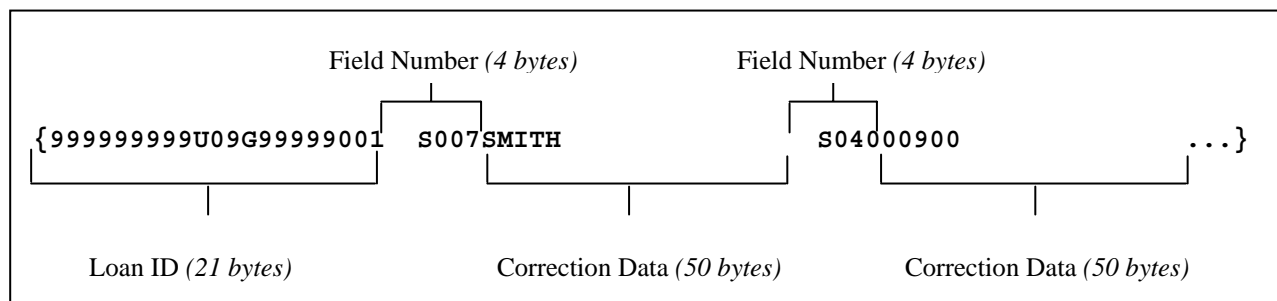
Corrected values must be left-justified within the 50-byte change value field. Numeric fields are left-justified and blank-filled up to the maximum number of positions for that field. For example, when correcting a five-byte numeric field to a value of “900,” the correction record would display 00900 with 45 blank spaces.

Example:

Two changes are submitted to a loan record whose ID is 999999999U09G99999001:

- A change in the borrower’s last name to SMITH, and
- A change in the first anticipated disbursement gross amount to \$900.

The following would be the contents of the change record excluding the create time, document number, and User ID fields at the end of the record:



Importing Actual Disbursement Data into EExpress

You can create a change record to import actual disbursement data from an external institutional system into EExpress. To do this, use the External Import Change record layout (DIEC09OP) in Volume III, Section 3 (Combination System Record Layouts) of the 2008-2009 COD Technical Reference.

The change record should include the following data elements:

Field	Change Field Number
Loan ID	N/A
Sequence Number	N/A
Disbursement Number	D003
Disbursement Date	D004
Action Date	D009
Action Type (Actual Disbursement)	D006
Action Amount (Actual Disbursement)	D007
Actual First Disbursement Change Flag	D008

Disbursement Action Types

The gross, fee, interest rebate, and net amounts are sent to the COD System for all anticipated and actual disbursements. Disbursement records can be recorded in EDEExpress by entering either actual gross or net amounts. EDEExpress calculates the other amounts.

You indicate whether disbursements are entered using the gross amount or net amount in COD School setup, Direct Loan. After a disbursement is entered into EDEExpress using a disbursement gross amount or a disbursement net amount, all disbursement records for that loan must be entered using the same method.

When entering an actual disbursement adjustment (date or amount), you also enter the disbursement number, the action date, and the action type field. This field identifies whether the adjustment is for a disbursement date or amount and describes the disbursement amount you are entering.

The following chart describes the action types available.

Description	Action Type
Enter gross or net amount of the disbursement	D
Enter gross or net amount of the adjustment	A
Use anticipated disbursement amounts to enter actual disbursement gross or net amounts to the disbursement grid. (Only applicable when creating an actual disbursement with an External Change file (DIEC09OP). This Action Type is not applicable to manual entry.)	U
Enter net adjustment amount (positive or negative) of the adjustment	N
Enter adjusted disbursement date	Q

Sequence of Disbursement Records

Disbursement records should occur in the file grouped by loan ID. The records must be sorted within loan ID by disbursement number and disbursement sequence number using the previous disbursement sequence number for disbursement sequence numbers 66 to 90 (adjustments to disbursements created on the COD System Web site).

For example, a loan has one actual disbursement and two adjustments. The table below demonstrates the appropriate sort order for these disbursement transactions.

	Disb Number	Disb Date	Disb Sequence Number	Previous Disb Sequence Number	Action Date
Disbursement	01	09/10/2008	01		
First Adjusted Disbursement Amount	01	09/10/2008	66	01	09/15/2008
Second Adjusted Disbursement Date	01	09/12/2008	02	66	10/01/2008

Inactive Loan Process (Adjustments to Zero)

Individual disbursements and the loan amount approved can be adjusted to zero. This process provides you the flexibility to increase the loan by simply recording and sending the COD System an upward adjustment if the loan or disbursement is to be reactivated after being adjusted to zero.

When you select the inactive flag in EDEExpress, a dialog box appears with two options.

Option 1 Select the loan as inactive so it no longer appears on reports.	Loan Amount Approved – not adjusted Anticipated Disbursement – not adjusted
Option 2 Select the loan as inactive so it no longer appears on reports and generates necessary change records to be exported to the COD System.	Loan Amount Approved – adjusted to zero Anticipated Disbursement – adjusts ALL anticipated disbursements to zero

Note: If the sum of actual disbursements is changed to \$0, EDEExpress displays a message suggesting that you may also want to change the loan amount approved to \$0.

The following scenarios demonstrate this process:

Scenario A

Description: School A needs to cancel an entire loan and **no** actual disbursements have been made.

1. Reduce the loan amount approved to \$0 or select the loan as inactive and select the option to reduce the loan amount approved to \$0.
2. Save the record.

Note: The save process within EDEExpress automatically reduces each anticipated disbursement to \$0.

3. Export a Common Record that contains the change to the loan amount approved and all anticipated disbursements to the COD System.

If you later decide to reactivate this loan:

4. Increase the loan amount approved to the appropriate amount, which automatically resets the inactive flag.
5. EDExpress automatically recalculates the anticipated disbursements.
6. Export a Common Record that contains the change to the loan amount approved and all anticipated disbursements to the COD System.

Scenario B

Description: School B wants to cancel an entire loan, but actual disbursements have been made.

1. Adjust all actual disbursements to \$0 and send in a Common Record that contains the adjusted disbursement record to the COD System.
2. At the same time, reduce the loan amount approved to \$0 or select the loan as inactive and select the option to reduce the loan amount approved to \$0.
3. Save the record.
4. Export a Common Record that contains the change to the loan amount approved.

If you later decide to reactivate this loan:

5. (As in Step 4 for Scenario A) Increase the loan amount approved to the appropriate amount. The current anticipated disbursements are *not* recalculated.
6. Enter new anticipated disbursements with new disbursement numbers.
7. Select the disbursement release indicator (DRI) and an actual disbursement record is sent to the COD System to report the new actual disbursement amounts.

Scenario C

Description: School C wants to only cancel individual actual disbursements but not inactivate the loan:

1. Adjust the individual actual disbursements to \$0.
2. Export a Common Record that contains these adjusted disbursements to the COD System.

If you later decide to reactivate these disbursements, you must submit the new disbursement amounts and the new disbursement dates as two separate disbursement adjustment transactions.

3. Export the Common Records to the COD System to report the adjusted disbursement amounts and adjusted disbursement dates.
4. Next, enter the **new disbursement date** (Q type transaction) and export a Common Record to the COD System to report the adjusted disbursement date. The adjusted disbursement date transaction ensures that the interest calculation on the reactivated disbursement is calculated accurately.

Prompt for Duplicates

If you selected the Prompt for Duplicates checkbox in the Import dialog box and EDEExpress discovers a record with the same student SSN, loan type, program year, and DL code as on a record being imported, it proceeds according to the action you select. For example, when you select:

- Create New, EDEExpress creates a new loan record and prompts you again when the next duplicate record is found. EDEExpress assigns the next highest loan sequence number.
- Create All, EDEExpress creates a new loan record when each instance of a duplicate record is found without further prompts. EDEExpress assigns the next highest loan sequence number.
- Skip, EDEExpress skips the duplicate record. The skipped record is counted on the Import Edit report as a skipped record.
- Skip All, EDEExpress skips each instance of a duplicate record without further prompts. The skipped records are counted on the Import Edit report as skipped records.

Loan Types in the Database

EDEExpress maintains separate records for each borrower loan type. For example, if a borrower is associated with a subsidized loan, unsubsidized loan, PLUS loan (as a parent borrower), and Grad PLUS loan, four records are imported to EDEExpress, one for each loan type. For each imported record, a record is established in the Loan Origination database.

Note: The EDEExpress Direct Loan module maintains an internal loan type (**G**) unique to Grad PLUS origination records to differentiate between PLUS and Grad PLUS data in EDEExpress functionality. This internal loan type is not submitted to the COD System. EDEExpress uses the existing PLUS Loan identifier (**P**) when creating the Grad PLUS Loan ID.

For subsidized, unsubsidized, and Grad PLUS loan types, the Loan Origination database maintains demographic information about the student borrower. Parent borrower and student demographic information is also maintained for PLUS loans.

Importing Disbursement Profile Codes into EDEExpress

Notes regarding importing disbursement profile codes into EDEExpress:

- You can include a disbursement profile code without including the loan period start/end dates, academic year start/end dates, or the anticipated disbursement dates (disbursement profile code must already be included in your setup.)
- You can include a disbursement profile code with corresponding loan period start/end dates, academic year start/end dates, and anticipated disbursement dates (EDEExpress adds this disbursement profile code, loan period start/end dates, academic year start/end dates, and anticipated disbursement dates to your setup.)
- You can include loan period start/end dates, academic year start/end dates, and anticipated disbursement dates, without a disbursement profile code. EDEExpress creates a generic disbursement profile code in your setup.

External Exports (Pell, TEACH, and Direct Loan)

The Export function in EDEExpress enables you to extract the data you need, in a format you create, for whatever purpose you choose. For example, when you receive responses for the disbursement records you send to the COD System, you can create ASCII files from the data that contains only the information needed by the business office to update student accounts.

Consider the following scenario for an External Export for Direct Loan information:

The Admissions Office at your school is compiling confidential statistics on the student population, and they need some data on Direct Loan recipients. They want only a little information about each student, not the student's entire financial aid record, and they want to use the data on their mainframe computer. You find you can accommodate their request easily by exporting the data from EDEExpress. You would follow these basic steps:

1. **Identify the fields** on the loan record that collect the information needed by the Admissions Office.
2. **Create a file format** that contains those fields using the File Formats tool in EDEExpress. To create the file format first, you assign a code to the file format and enter a description so that you can identify it. Then you select the data fields you want to be included in the file format from a menu. (See "File Formats" later in this section and the online Help in EDEExpress for information about creating and using file formats.)
3. **Export the data.** When you begin the export process, you can select the records you want to export using queries or selection criteria. You also select the format code so EDEExpress knows what format to use. In other words, EDEExpress exports exactly the data you specify from only the records you select. The data you export is always in ASCII format. The Admissions Office staff told you that having the file delimited by tabs would make moving the data onto their mainframe much simpler, so you select the tab delimited option in the Export to File dialog box and proceed with the export.
4. **Print the format** you used to export the data and give the printout to the administrators of the Admissions Office's computer system. The format lists the fields you selected. When the administrators match the format to the exported data, they can identify the data elements in each student's record.

The key points are to give the printed file format to the people receiving the data and to tell them that the file is in ASCII format.

Note: ACG and National SMART Grant fields are available for selection under Pell File Format setup and are included in Pell External Export. The exported records are identified as Grant Type A for ACG and T for National SMART Grant, provided you select the Grant Type field as part of the Pell File Format you use for the export. In addition, Grad PLUS records included in a Direct Loan External Export file are identified as Loan Type G (Grad PLUS), provided you select the Loan Type field as part of the Direct Loan File Format you use for the export.

Header and Trailer Records

Because each school's system has unique requirements for importing data files, the export files created by EDEExpress for use by external systems are created without header or trailer records attached. If needed, the appropriate header or trailer records must be created by your school's system upon import.

Also, these export files are created in ASCII format and the end of each record is delineated or marked with carriage return/line feed characters (ASCII 13 and 10). After the last record there is no end of file marker (EOF), only the final carriage return/line feed marker.

Remember that before you can export external data, you must first establish file formats to format the data for the external systems that will use it. Each file format is identified by a code. Select Tools from the EDEExpress menu bar to access the File Format function.

File Formats

File Formats is a utility in EDEExpress that enables you to select the data fields and the order of the fields for a file to be exported to an external system. Before you can export external data, you must establish a file format for Pell data, TEACH data, or for Direct Loan data that is tailored to your external system.

Note: ACG and National SMART Grant fields are included under Pell File Format setup.

Each file format is identified by a user-defined, two-character code and the specific fields you select in the File Formats dialog box. The order in which you select the fields displays in the Sequence column and indicates the sequence in which the fields appear in the exported file.

Files exported out of EDEExpress using File Formats can be exported as standard fixed-length files or each field can be separated by a delimiter. When exporting a file, if you choose fixed-length, the system exports the file in a standard layout, with each field exported into a specific field position within the layout. If you choose comma, tab, or custom delimiter, EDEExpress exports the file with each field separated by the chosen delimiter. Some systems may find it easier to import the file with a selected delimiter, rather than using a fixed-length layout for all exports.

Create File Formats

The specific steps to create a file format in EDEExpress follow.

1. Select **Tools, File Formats** from the menu bar.
2. Click the module for which you want to create the file format.
Note: ACG and National SMART Grant fields are included in Pell File Formats.
3. (Optional) If you have previously created file formats, click **Add**.
4. Type a two-character format code for the file you are creating. The code must be unique.
5. Type a description of the format you are creating.
6. Click the down arrow on the right to scroll through the list of fields.
7. (Optional) If you want to select all the fields, click **Select All**
Note: You are limited to selecting 255 fields at one time.
8. (Optional) If you want to select specific fields, select the checkbox next to the fields you want to select.
9. Click the **Resequenece** button to shift all selected fields to the top of the list for easy viewing. Click **OK** to continue.
10. Click **Save** to save the format, then click **OK** to continue.
11. (Optional) Click **Add** and repeat steps 3 through 10 to add more formats.
12. Click **OK** to return to the EDEExpress main window.

For more information on file formats, see the online Help in EDEExpress.

Export Data to an External System

The specific steps to export data to an external system follow.

1. Select **File, Export** from the menu bar.
2. Click the tab for the module from which you are exporting data (Pell or Direct Loan.)
3. Click the down arrow on the Export Type box to display and select from a list of data types to export.

For Pell, select **External Export**.

For TEACH, select **External Export**.

For Direct Loan, select **External Loan Data**.

Note: ACG and National SMART Grant fields selected in Pell File Formats are included in Pell External Export and are identified as Grant Type A and T (respectively), provided you select the Grant Type field as part of the Pell File Format you use for the export. In addition, Grad PLUS records included in a Direct Loan External Export file are identified as Loan Type **G** (Grad PLUS), provided you select the Loan Type field as part of the Direct Loan File Format you use for the export.

4. Confirm that the default filename and data directory you established in setup appears in the Export To box.
5. (Optional for Direct Loan) Set export status to **Y** (Yes), **N** (No), or **B** (Both.) Export status refers to the export to external flag in the database. Choosing export status as Y in the Export dialog box exports all records with the export to external system flag set to Y. After the export process completes, this flag is set to N.
6. Type the code of the file format you want to use in the Format Code entry box in the lower portion of the window. (See “File Formats” in this section and the online Help in EDEExpress for information about creating and using file formats.)

Or, click the **ellipsis (...)** button to open the File Format grid and select a code from the list. Click the code you want to use, and then click **OK** to return to the Export dialog box.

7. (Optional) Click the **Select Delimiter** option and choose the delimiter method you want to use to separate the data in your file. If you chose to use a custom delimiter, type the character/string you want to use in the Custom Delimiter entry box.

8. (Optional) Click the **Selection Criteria** button to narrow the group of records you want to work with. When you are finished, click **OK**.
9. Click **OK** to export the file. EDEExpress exports the file to the location shown in the Export To box, and an Export Statistics dialog box appears.
10. Click **OK** to close the Export Statistics dialog box.

The Query Function

EDEExpress includes a powerful SQL-based query function that offers you much flexibility in locating and extracting information from the records in your database, for whatever purpose you require. It enables you to create files tailored with information just for the business office or to print reports that identify specific student populations.

General information on query follows. For more detailed query information, see the online Help in EDEExpress.

What is a Query?

A query is a request for certain records from your EDEExpress database. It describes records meeting certain criteria that you specify. Queries are used in functions like print and export to select specific groups of student records from all the records in the database. Some queries have fixed values, or you can enter different values each time you use the query.

Why Create a Query?

Use a query any time you want to work with a subset of all the records in your database. For instance, you may want to print a list of seniors to whom you have disbursed Pell. Or, you might want to create unsubsidized loan records for all dependent students with parent's credit decisions of credit denied.

Queries are used in all modules of EDEExpress to perform specific functions, such as printing and exporting. Generally, any time working with a subset of records makes sense, EDEExpress provides the option to use a query. Queries are available in any dialog box where the Selection Criteria button is enabled.

Note: Entry fields specific to ACG and National SMART Grant records can be selected in Pell Query setup.

Simple Query Statements

A query statement has three components:

- Data field
- Operator
- Value

Query Examples

Example of a Pell Grant Query

If you want to find all students who are **residents of Missouri**, who received the **maximum amount** of Pell Grant funding, the query statement may look like this:

(STUDENT'S STATE OF LEGAL RESIDENCE = "MO")
AND
(AWARD AMOUNT FOR ENTIRE YEAR = 4310)

Example of a TEACH Grant Query

If you want to identify students whose TEACH Grant is not yet showing as booked in EDEExpress, the query statement would look like this:

(Booked Status) = Blank

Example of a Direct Loan Query

If you want to find all **first year students who have never attended college** with an approved loan amount of **less than 2,000**, the query statement may look like this:

(GRADE LEVEL IN COLLEGE – DL = "0")
AND
(LOAN AMOUNT APPROVED < 2000)

You can build queries like these easily in EDEExpress by selecting fields, operators, and values from lists. Help for the valid values, for all fields, is available on the Query window.

Predefined Queries

To get you started, EDEExpress offers sets of queries that are commonly used in Pell, TEACH Direct Loan, and the other modules of the software. You can use these predefined queries as they are, or you can use them as templates for building the queries that are most useful to your school and the way you process data.

Note: See the online Help in EDEExpress for a complete list of predefined queries.

Create a Query

The specific steps to create a query in EDEExpress follow.

1. Select **Tools, Query** from the EDEExpress menu bar.
2. Click the tab of the module for which you want to create a query (Pell, TEACH, or Direct Loan.)
3. Click the **Add** button.
4. Type a descriptive title for the query.
5. Select a field from the field list. You can type the first few letters of the field name to find the field names that begin with those letters.
6. Click the down arrow in the operator field to select an operator.
7. Type a value for the field. Click the **Value Help** button to see the valid values for the field.

If you want to be prompted for a value at the time you use the query, do not specify a value for the query statement. Instead, select the **Prompt at Execution** checkbox.

8. Click the **Append** button to add the query statement to the criteria box.
9. (Optional) Click the **And** button or the **Or** button to add another statement to the query. Repeat steps 5 through 8 until you have added all statements for the query, and then continue with step 10.
10. Click **Save** to save the query, then click **OK**.
11. Click **OK** to close the Query dialog box or click **Add** to create another query.

Combination System Edits

Volume III, Section 4 of the *2008-2009 COD Technical Reference* contains Pell Grant, ACG, National SMART Grant, TEACH Grant, and Direct Loan EDEExpress edits. They are provided in a table format and are listed by edit number. The field name, condition, and message associated with each edit are also provided.

Example End-of-Entry Edits and Resolution Steps

The following end-of-entry edits are commonly encountered whenever importing external origination or disbursement add data into Pell, TEACH, and Direct Loan. Refer to these example edits for resolution help.

Pell, ACG, and National SMART Grant

Origination End-of-Entry Edits

1200, 1205, 1209 to 1211, and 1213	<p>Description: For a Pell record, EDEExpress validates the student's award amount for the entire school year based on the student's EFC, academic calendar, cost of attendance, and enrollment status or weeks/hours used to calculate payment. If the award amount for the entire year in the External Origination Add file is greater than the EDEExpress calculated amount, the record will not import.</p> <p>Resolution Steps: Confirm each record has the correct award amount for the entire year in the External Add file.</p> <p>Payment methodology and academic calendar – When calculating award amounts, you must use the correct payment methodology and academic calendar combination. EDEExpress has a variety of edits that ensures consistent and accurate award amounts, provided the values are correct.</p>
1550	<p>Description: This edit results when the student's date of birth in the External Origination Add file is blank.</p> <p>Note: This edit applies to Pell, ACG, and National SMART Grant origination records.</p> <p>Resolution Steps: Add the student's date of birth in CCYYMMDD format to the External Add file.</p>

Origination End-of-Entry Edits (Continued)

<p>1605</p>	<p>Description: This edit results if you attempt to originate an ACG record with an Award Amount for the Entire School Year greater than \$1300 and the Academic Year Level is 2.</p> <p>Resolution Steps: Adjust the Award Amount for the Entire School Year on the ACG record to a value equal to or less than \$1300.</p>
<p>1610</p>	<p>Description: This edit results if you attempt to originate a National SMART Grant record with an Award Amount for the Entire School Year greater than \$4000.</p> <p>Resolution Steps: Adjust the Award Amount for the Entire School Year on the ACG record to a value equal to or less than \$4000.</p>
<p>1620</p>	<p>Description: This edit results if the grant type is ACG and the Academic Year Level is not blank, 0, 1, or 2.</p> <p>Resolution Steps: Adjust the Academic Year Level to blank, 0, 1, or 2.</p>
<p>1630</p>	<p>Description: This edit results if the grant type is National SMART Grant and Academic Year Level is not blank, 3 or 4.</p> <p>Resolution Steps: Adjust the Academic Year Level to blank, 3 or 4.</p>
<p>1640</p>	<p>Description: This edit results if you attempt to originate an ACG record with an Award Amount for the Entire School Year greater than \$750 and the Academic Year Level is 0 or 1.</p> <p>Resolution Steps: Adjust the Award Amount for the Entire School Year on the ACG record to a value equal to or less than \$750.</p>
<p>1650</p>	<p>Description: This edit results if the grant type is ACG, the Eligibility/Payment Reason is 1, and the High School Program code is blank.</p> <p>Resolution Steps: Enter a valid High School Program code or adjust the Eligibility/Payment Reason to 2 or 3.</p>
<p>1670</p>	<p>Description: This edit results if the grant type is ACG or National SMART Grant and the Citizenship Status is not blank or 1.</p> <p>Resolution Steps: Adjust the Citizenship Status to blank or 1.</p>

Disbursement End-of-Entry Edits

1520, 1530, 1540 and 1660	<p>The U.S. Department of Education assigns a Funding Methodology to schools which determines when a school can disburse funds.</p> <p>Note: Edit 1530 applies to Pell disbursement records only. Edit 1660 applies to ACG and National SMART Grant disbursement records only. Edits 1520 and 1540 apply to Pell, ACG, and National SMART Grant disbursement records.</p> <p>1520 – Description: This edit applies to schools using one of the following funding methods:</p> <p>Just-in-Time Funding, Pushed Cash or Cash Monitoring 1 (CM1). The current date cannot be more than 7 days before the disbursement date.</p> <p>Resolution Steps: To correct this edit, enter a disbursement date that falls between: 07/01/2008 and 09/30/2014 for Pell Grant disbursement dates or 07/01/2008 and 09/30/2013 for ACG and National SMART Grant disbursement dates and is no more than 7 days greater than the current date.</p> <p>1530 – Description: This edit affects schools using the Advanced Pay funding method and the record is a Pell Grant. The current date cannot be more than 30 days before the disbursement date.</p> <p>Resolution Steps: To correct this edit, enter a Pell Grant disbursement date that falls between 07/01/2008 and 09/30/2014 and is no more than 30 days greater than the current date.</p> <p>1540 – Description: This edit applies to schools using the Cash Monitoring 2 or Reimbursement funding method. The current date cannot be greater than the disbursement date.</p> <p>Resolution Steps: To correct this edit, enter a disbursement date that falls between 07/01/2008 and 09/30/2014 for Pell Grant disbursement dates or 07/01/2008 and 09/30/2013 for ACG and National SMART Grant disbursement dates and matches the current date</p> <p>1660 – Description: This edit affects schools using the Advanced Pay funding method and the record is an ACG or National SMART Grant. The current date cannot be more than 7 days before the disbursement date.</p> <p>Resolution Steps: To correct this edit, enter an ACG or National SMART Grant disbursement date that falls between 07/01/2008 and 09/30/2013 and is no more than 7 days greater than the current date.</p>
--	---

TEACH Grant

Origination End-of-Entry Edits

5001	<p>Description: This edit occurs if Citizenship Status is equal to 3.</p> <p>Resolution Steps: Change the citizenship status in the External TEACH Grant Data file to 1 (U.S. Citizen), 2 (Non-U.S. Citizen) or blank.</p>
5007	<p>Description: This edit results when the student's date of birth in the External TEACH Grant Data file is blank.</p> <p>Resolution Steps: Add the student's date of birth in CCYYMMDD format to the External TEACH Grant Data file.</p>
5009	<p>Description: This edit occurs if the Award Amount for the Entire School Year is zero.</p> <p>Note: This is a warning edit only and does not stop any save process based on only this edit.</p> <p>Resolution Steps: If this is an initial award, this record will reject at COD, since zero is not an acceptable award amount on an initial submission. Enter the amount of the TEACH Grant in the Award Amount for the Entire School Year field in the External TEACH Grant Data file. If this is a correction to an already accepted TEACH award and you are zeroing out the previous award amount, COD will accept this and does not need to be changed in the TEACH Grant External Data file</p>

Disbursement End-of-Entry Edits

5102	<p>Description: This edit occurs if a new disbursement sequence is added and current actual disbursement # is not Accepted or Batched.</p> <p>Resolution Steps: Actual disbursement must be Accepted or Batched before a change is applied to that actual disbursement. Export and transmit actual disbursements.</p>
5104	<p>Description: This edit occurs if the Amount Submitted and the Disbursement Date are the same as the previous Amount Submitted and Disbursement Date for this disbursement number.</p> <p>Resolution Steps: Change either the Amount Submitted or the Disbursement Date for this disbursement sequence number in the External TEACH Grant Data file so that it is different than the previous disbursement sequence number.</p>

<p>5105</p>	<p>Description: This edit occurs if both the Submitted Amount and Disbursement Date are different than the Submitted Amount and Disbursement Date of the previous transaction for this disbursement number.</p> <p>Resolution Steps: You may not change both the Submitted Amount and Disbursement Date fields in a single disbursement transaction. Change either the Submitted Amount or the Disbursement Date field in the External TEACH Grant Data file.</p>
<p>5111</p>	<p>Description: This edit occurs if the Funding Method from TEACH Grant School Setup is Advance or Cash Monitoring 1, the Disbursement Release Indicator is true, and current date is more than 7 days prior to the Disbursement Date.</p> <p>Resolution Steps: Change the Disbursement Date in the External TEACH Grant Data file to be less than or equal to 7 days prior to the current date.</p>

Direct Loan

Direct Loan General End-of-Entry Edits

1025	<p>Description: This edit occurs if the change record importing the borrower default on education loans is set to a Y and an actual disbursement exists.</p> <p>Resolution Steps: EDEExpress prompts you to adjust the actual disbursement to \$0 (Disbursement tab) and set default on student loan to Y (Origination tab). Or, you can correct the Import Change file to include the correct data. After corrected, the changes are ready to send to COD.</p>
1180	<p>Description: This edit indicates the anticipated disbursement date is in error, because the dates imported were out of order.</p> <p>Resolution Steps: You can correct this by ensuring that the anticipated disbursement dates in the import file are listed in ascending order by Disbursement Number. After the dates are corrected, you can reimport the data into EDEExpress.</p> <p>If you are importing an actual disbursement and receive this error, compare the date of the actual disbursement in the import file with the dates of the subsequent anticipated disbursement(s) in EDEExpress. You can then either correct the date of the actual disbursement, if necessary, and reimport the file, or you can update the dates of the subsequent anticipated disbursement(s) in EDEExpress, send the change to the COD System, and then reimport the Import Change File with the actual disbursement information.</p>
1215	<p>Description: This edit looks at the inactive loan flag. If the inactive loan checkbox is selected, updates to actual disbursements are not allowed.</p> <p>Resolution Steps: Review the inactive loan flag checkbox in the Loan Information box on the Loans tab. If the loan should be active, you can clear the inactive loan checkbox and then make changes to the disbursement fields.</p>

Direct Loan Origination End-of-Entry Edits

1010	<p>Description: You receive this error when the student's date of birth is the same as the parent's date of birth on a PLUS loan.</p> <p>Resolution Steps: Correct either the student's date of birth or the parent's date of birth.</p>
1035	<p>Description: You receive this error if the dependency status = D for dependent and year in college is six or seven. Graduate students cannot be dependent.</p> <p>Resolution Steps: Change either the dependency status or the year in college.</p>
1126	<p>Description: You receive this error when the loan period end date is more than 36 months past the loan period start date (must be less than or equal to 1095 days, or 1096 days if February 29th of a leap year falls within the dates)</p> <p>Resolution Steps: Correct this error by adjusting the loan period start or end date.</p>
1135	<p>Description: You receive this error when the Academic Year End date is more than 36 months past the academic year start date (must be less than or equal to 1095 days, or 1096 days if February 29th of a leap year falls within the dates).</p> <p>Resolution Steps: Correct this error by adjusting the academic year start or end date.</p>

Direct Loan MPN End-of-Entry Edits

1065	<p>Description: You receive this error:</p> <p>If the MPN status is changed to S and the current MPN status is not P, or</p> <p>If the current MPN status is not an R and the MPN print indicator is F, on-site custom system.</p> <p>Resolution Steps: Change the status to P, then change the status to S.</p>
4006	<p>Description: You receive this error when the MPN status is changed to T and the current MPN status is not N, R, P, S, or M.</p> <p>Resolution Steps: Change the current MPN status to R or P. Then, change the MPN status to T.</p>

HERA Appendix

The Higher Education Reconciliation Act (the HERA) of 2005

The Higher Education Reconciliation Act of 2005 (the HERA), Pub. L. 109-171, created two Title IV grant programs—the Academic Competitiveness Grant (ACG) and the National Science and Mathematics Access to Retain Talent Grant (National SMART Grant). The HERA also extended Federal Direct PLUS Loan (Direct PLUS) eligibility to graduate or professional students.

Note: The HERA provides for eligible graduate or professional students to receive Direct PLUS Loans on or after July 1, 2006. The HERA provision did not create a new loan program, but rather, allows a new type of borrower—an eligible graduate or professional student—to borrow under the existing Direct PLUS Loan Program. In EDEXpress, a Direct PLUS loan for a graduate or professional student is referred to as a “Grad PLUS” loan.

Origination and disbursement data for ACG, the National SMART Grant, and Grad PLUS are processed through the COD System using the COD Common Record and COD Common Record Response.

In the sections below we provide additional detail and guidance to EDEXpress combination users regarding the ACG, National SMART Grant, and Grad PLUS loan, as well as other EDEXpress enhancements related to the HERA.

Academic Competitiveness Grant (ACG)

The Academic Competitiveness Grant (ACG), the first of two Title IV grant programs established by the HERA, is available to full-time students at degree-granting institutions who are Federal Pell Grant recipients and U.S. citizens.

All ACG functions performed in EDEExpress use existing Pell and COD software functionality, including tabs, menu options, and setup parameters. For example, ACG origination and disbursement data is entered and modified on the Pell Origination and Disburse tabs, respectively, and uses default information established under Pell School and COD System setup.

You can create ACG origination and disbursement records in EDEExpress 2008-2009 using the external import record layouts provided in Volume III, Section 3 (Combination System Record Layouts) in the *2008-2009 COD Technical Reference*.

ACG origination and disbursement records are exported under the Pell module as part of the COD Common Record (CRAA09IN) export. Processed ACG data is returned by the COD System in the COD Common Record Response (CRAA09OP).

EDEExpress Setup Requirements for ACG

If you have already established your Pell School setup in EDEExpress, no additional setup is required to process ACG origination and disbursement records. If you have not previously set up EDEExpress for Pell, you must complete Pell School setup (**Tools, Setup, COD, School, Pell Payments**) and COD System setup (**Tools, Setup, COD, System**) before you can begin creating ACG records.

- Pell School setup enables you to establish the schools for which you want to process ACG originations and disbursements and to specify certain settings that EDEExpress will apply when processing ACG records.

Note: Cost of Attendance, while a required field in Pell School setup, is not taken into consideration for ACG.

- COD System setup enables you to identify the Source Entity ID and other default settings that will be used for ACG processing.

Origination Add/Change - ACG

You can add and modify ACG origination records in EDEExpress using Pell Grant, ACG, and National SMART Grant External Origination Add/Change import (PGEO09OP) files. Refer to Volume III, Section 3 (Combination System Record Layouts) of the *2008-2009 COD Technical Reference* for the Pell Grant, ACG, and National SMART Grant External Origination Add/Change record layout.

Note: The Award ID for ACG records is two bytes shorter than the Award ID for Pell records. The ACG Award ID is based on the student's original Social Security Number (SSN), the Grant Type (**A** for ACG), the award cycle indicator, the Attended Pell ID, and the origination sequence number.

In most cases, data required to add Pell origination records are also required for ACG origination records. The following data elements are required by the COD System for ACG origination records:

- Grant Type (Field #36): Indicates whether you are creating a Pell, ACG, or National SMART Grant origination record.
- Academic Year Level (Field #37): Indicates student's class standing or grade level. Only a college year of 0, 1, or 2 is a valid value for an ACG at the COD System.
- Eligibility/Payment Reason (Field #38): Indicates the reason the school determined the student is eligible for ACG. Valid values are **1** (High School Program), **2** (AP/IB courses), **3** (coursework), or blank.
- High School Program (Field #39): Indicates the state high school program the student completed to qualify for ACG. This field is only required if you provide an Eligibility/Payment Reason (Field #38) of **1** (High School Program). Go to ED's IFAP Web site, located at ifap.ed.gov, for a list of valid high school programs and their values.

In addition to these four fields, other ACG origination fields you must provide to the COD System include the Award Amount for Entire School Year (Field #9), Enrollment Date (Field #14), and CPS Transaction Number (Field #18). The Pell Grant, ACG, and National SMART Grant External Origination Add/Change record layout in Volume III, Section 3 (Combination System Record Layouts) of the *2008-2009 COD Technical Reference* indicates valid values for the record layout fields used to add Pell, ACG, and National SMART records.

The ACG External Origination Change process uses the same record layout and message class (PGEO09OP) as the Pell Grant, ACG, and National SMART Grant External Origination Add. As with Pell records, you are only required to provide the ACG origination fields and data that are to be modified, along with a few key fields (such as Award ID), for the file to be imported into EDEExpress. Any fields not modified should be submitted as filler in your import file.

Disbursement Add/Change - ACG

You can add and modify ACG disbursement records in EDEExpress using Pell Grant, ACG, and National SMART Grant External Disbursement Add/Change import (PGED09OP) files. Refer to Volume III, Section 3 (Combination System Record Layouts) of the *2008-2009 COD Technical Reference* for the Pell Grant, ACG, and National SMART Grant External Disbursement Add/Change record layout.

All fields required to add or modify a Pell disbursement record are also required to add or modify an ACG disbursement record. Use the following rules to add or modify ACG disbursement data with the Pell Grant, ACG, and National SMART Grant External Disbursement Add/Change import file:

- You must have an ACG origination record created in EDEExpress for a student before you can add an ACG disbursement record for that student using a Pell Grant, ACG, and National SMART Grant External Disbursement Add/Change file.
- The ACG Award ID you provide for a student record in a Pell Grant, ACG, and National SMART Grant External Disbursement Add/Change file must match the Award ID of that student's ACG origination record.
- You must have an ACG disbursement record created in EDEExpress for a student record before you can modify that ACG disbursement using a Pell Grant, ACG, and National SMART Grant External Disbursement Add/Change file.

The valid 2008-2009 disbursement date range for ACG records is 7/1/2008 to 9/30/2013.

ACG Electronic Statement of Account (ESOA)

You can import the ACG-specific version of the Electronic Statement of Account (ESOA) generated by the COD System by selecting **File, Import, Pell, Electronic Statement of Account**.

To view or print imported ACG ESOA reports, go to **File, Print, Pell**, select **ESOA** as the Report, then select **ACG** as the Grant Type. As with the Pell ESOA report, you can print ACG data from a single ESOA file (by Document ID) or all ESOA data for a particular Reporting Entity ID.

Additional ACG Functionality in EExpress 2008-2009

The following ACG-specific enhancements, listed by module and software area, are available in EExpress 2008-2009:

Global

- **Updated HERA Overview Help Topic.** We updated help topics available in Global, Application Processing, Packaging, and Query online help for 2008-2009 that provide detailed information and guidance on EExpress changes related to the HERA. The topics are titled “Academic Competitiveness Grant (ACG),” “National Science and Mathematics Access to Retain Talent (SMART) Grant,” “Graduate and Professional Student PLUS Loan (Grad PLUS),” and “Other HERA Changes Overview.” The topics are accessed by clicking **Help, Help Topics** from the EExpress menu bar, selecting the **Index** tab, and typing the name of the topic you want to view.
- **Updated ED-Initiated Import Message Class for ACG Data File.** The 2008-2009 version of the ACG Data File (message class **ED2009OP**) can be imported and printed using the EExpress Global ED-initiated Import function. The ACG Data File contains ACG student self-identification data entered on FAFSA on the Web or FAA Access to CPS Online, or by calling the Federal Student Aid Information Center (FSAIC), which can be used as part of eligibility determination and verification procedures. The report is print-only, and the data is not stored in the EExpress database. You must define the ACG Data File message class in **Tools, Setup, Global, ED Initiated Imports** before you can import ACG Data Files you have received. A record layout for the ACG Data File is available in Section 3 of the *2008-2009 Electronic Data Exchange (EDE) Technical Reference*, available on the FSAdownload Web site, located at fsadownload.ed.gov.

Note: Due to a limitation in the number of comment codes that can be assigned to a given ISIR transaction, ACG-related comment codes may not always appear on the ISIR for ACG-eligible students. Be sure to check ACG Data Files (ED2009OP) for additional ACG eligibility information.

- **Added High School Graduation Year to ACG Data File.** We added High School Graduation Year to the information collected during the ACG pre-certification process on FAFSA on the Web and to the ACG Data File (ED2009OP), which can be imported into EExpress.

Application Processing

- **New and Relabeled ACG NSLDS Data Elements on ISIR Record.** Four new NSLDS data elements for the ACG are included in the 2008-2009 ISIR record:
 - Percent Eligibility Used by Scheduled Award
 - Total Percent Eligibility Used by Academic Year Level
 - Award Year
 - ACG Scheduled Award

We also relabeled the NSDLS element “Year in College” to “Academic Year Level.”

NSLDS data elements included in the ISIR record are viewed in EDEExpress from a student’s record (**View, NSLDS**) or printed on the NSLDS report (**File, Print, App Express, NSLDS**).

Pell

- **Relabeled “College Year” as “Academic Year Level.”** We relabeled the ACG Origination field “College Year” to be “Academic Year Level.”
- **Revised Warning Message for \$0 Award Amount for Entire School Year.** EDEExpress now displays the following warning message if you try to save an ACG origination record with an Award Amount for Entire School Year of \$0: “The Award Amount for Entire School Year is zero. If this is an initial award, this record will reject at COD, since zero is not an acceptable award amount on an initial submission. If this is a correction and you are zeroing out a previous award amount, COD will accept this.”
- **Added Citizenship Status Edit for ACG Records.** ACG origination records can now only be created for students with a Citizenship Status of **1** (U.S. Citizen) or blank. The Citizenship Status field is located on the Demo tab.
- **Additional Data Edits for ACG Records.** In addition to checking the citizenship status, EDEExpress now prevents ACG origination records meeting the following conditions from being saved:
 - Academic Year Level is greater than 0, 1, or 2
 - Award Amount for Entire School Year exceeds \$750 for Academic Year Level 0 or 1 or \$1300 for Academic Year Level 2
 - Eligibility/Payment Reason is 01 and High School Program Code is blank

- **Added Disbursement Edits for ACG Based on Funding Method.** EDEExpress now prevents ACG actual disbursements (Disbursement Release Indicator [DRI] checkbox selected [set to True]) meeting the following conditions from being saved:
 - Funding Method from Pell School setup is Just-In-Time, Pushed Cash, or Cash Monitoring 1 and the current system date is greater than seven days before the disbursement date
 - Funding Method from Pell School setup is Advance Pay and the current system date is more than seven days before the disbursement date
 - Funding Method from Pell School setup is Cash Monitoring 2 or Reimbursement and the current system date is more than zero days before the disbursement date
- **Added Student’s First, Last Name to ACG Multiple Entry.** The student’s first and last names appear on the ACG Multiple Entry Select Records grids, making it easier for you to locate and select specific students you want to update.
- **ACG Import Edit Reports Display Total Percent Eligibility Used by Academic Year Level.** EDEExpress prints the new ACG data element Total Percent Eligibility Used by Academic Year Level on the Import Edit Records Report for Common Record Response files with Document Type Codes of RS or ND, but does not store the data in the database.
- **Added ACG Data Elements to Year-to-Date (YTD) Files.** The new ACG data elements Percent Eligibility Used by Schedule Award, Total Eligibility Used by Academic Year Level, and Scheduled Award are included in the ACG YTD Data files. However, EDEExpress does not store or print these data elements or use them when generating the Compare and Print Exceptions? report.
- **Added ACG Data Elements to MRR Files.** The new ACG data elements Percent Eligibility Used by Schedule Award, Total Eligibility Used by Academic Year Level, and Scheduled Award are included in ACG Multiple Reporting Record (MRR) files, but only Percent Eligibility Used by Schedule Award prints on the Import Edit Report. EDEExpress does not store or print the data.
- **Student’s First or Last Name Required in External Origination Add Records.** The student’s first or last name is now required in External Origination Add import records for ACG.
- **Relabeled Fields on ACG Electronic Statement of Account (ESOA) Reports.** On the ACG ESOA, we relabeled “Pell School Number” as “Pell Reporting School Identifier” and “Common School Identifier” as “Entity Identifier.”

- **Added Grant Type to Query, File Formats, Browse.** The Grant Type field (ACG, Pell, or National SMART) can now be used in queries (Pell Query dialog box), exported in file formats (Pell File Format dialog box), and is now displayed in both the Origination and Disbursement tabs of the Browse Pell dialog box.

National SMART Grant

The National Science and Mathematics Access to Retain Talent Grant (National SMART Grant), the second of two Title IV grant programs established by the HERA, is available to full-time students at degree-granting institutions who are Federal Pell Grant recipients and U.S. citizens.

As with the ACG, all National SMART Grant functions performed in EDEExpress use existing Pell and COD software functionality, including tabs, menu options, and setup parameters. For example, National SMART Grant origination and disbursement data is entered and modified on the Pell Origination and Disburse tabs, respectively, and uses default information established under Pell School and COD System setup.

You can create National SMART Grant origination and disbursement records in EDEExpress 2008-2009 using the external import record layouts provided in Volume III, Section 3 (Combination System Record Layouts) of the *2008-2009 COD Technical Reference*.

National SMART Grant origination and disbursement records are exported under the Pell module as part of the COD System Common Record (CRAA09IN) export. Processed National SMART Grant data is returned by the COD System in the COD Common Record Response (CRAA09OP).

EDEExpress Setup Requirements for National SMART Grant

If you have already established your Pell School setup in EDEExpress, no additional setup is required to process National SMART Grant origination and disbursement records. If you have not previously set up EDEExpress for Pell, you must complete Pell School setup (**Tools, Setup, COD, School, Pell Payments**) and COD System setup (**Tools, Setup, COD, System**) before you can begin creating National SMART Grant records.

- Pell School setup enables you to establish the schools for which you want to process National SMART Grant originations and disbursements and to specify certain settings that EDEExpress will apply when processing National SMART Grant records.

Note: Cost of Attendance, while a required field in Pell School setup, is not taken into consideration for the National SMART Grant.

- COD System setup enables you to identify the Source Entity ID and other default settings that will be used for National SMART Grant processing.

Origination Add/Change – National SMART Grant

You can add and modify National SMART Grant origination records in EDEExpress using Pell Grant, ACG, and National SMART Grant External Origination Add/Change import (PGEO09OP) files. Refer to Volume III, Section 3 (Combination System Record Layouts) of the *2008-2009 COD Technical Reference* for the updated Pell Grant, ACG, and National SMART Grant External Origination Add/Change record layout.

Note: The Award ID for National SMART Grant records is two bytes shorter than the Award ID for Pell records. The National SMART Award ID is based on the student's original Social Security Number (SSN), the Grant Type (**T** for National SMART Grant), the award cycle indicator, the Attended Pell ID, and the origination sequence number.

In most cases, data required to add Pell origination records are also required for National SMART Grant origination records. The following data elements are required by the COD System for National SMART Grant origination records:

- Grant Type (Field #36): Indicates whether you are creating a Pell, ACG, or National SMART Grant origination record.
- Academic Year Level (Field #37): Indicates student's class standing or grade level. Only a college year of 3 or 4 is a valid value for a National SMART Grant at the COD System.
- CIP Code (Field #40): Indicates the student's major, or Classification of Instruction Program (CIP) code, that justifies National SMART Grant eligibility. Go to ED's IFAP Web site, located at ifap.ed.gov, for a current list of eligible majors and their corresponding CIP Code.

In addition to these three fields, other National SMART Grant origination fields you must provide to the COD System in your file include the Award Amount for Entire School Year (Field #9), Enrollment Date (Field #14), and CPS Transaction Number (Field #18). The Pell Grant, ACG, and National SMART Grant External Origination Add/Change record layout in Volume III, Section 3 (Combination System Record Layouts) of the *2008-2009 COD Technical Reference* indicates valid values for the record layout fields used to add Pell, ACG, and National SMART Grant records.

The National SMART Grant External Origination Change process uses the same record layout and message class (PGEO09OP) as the Pell External Origination Add. As with Pell records, you are only required to provide the National SMART Grant origination fields and data that are to be modified, along with a few key fields (such as Award ID), for the file to be imported into EDEExpress. Any fields not modified should be submitted as filler in your import file.

Disbursement Add/Change – National SMART Grant

You can add and modify National SMART Grant disbursement records in EDEExpress using Pell Grant, ACG, and National SMART Grant External Disbursement Add/Change import (PGED09OP) files. Refer to Volume III, Section 3 (Combination System Record Layouts) of the *2008-2009 COD Technical Reference* for the Pell Grant, ACG, and National SMART Grant External Disbursement Add/Change record layout.

All fields required to add or modify a Pell disbursement record are also required to add or modify a National SMART Grant disbursement record. Use the following rules to add or modify National SMART Grant data using the Pell Grant, ACG, and National SMART Grant External Disbursement Add/Change import file:

- You must have a National SMART Grant origination record created in EDEExpress for a student record before you can add a National SMART Grant disbursement record for that student using a Pell Grant, ACG, and National SMART Grant External Disbursement Add/Change file.
- The National SMART Grant Award ID you provide for a student record in a Pell Grant, ACG, and National SMART Grant External Disbursement Add/Change file must match the Award ID of that student's National SMART Grant origination record.
- You must have a National SMART Grant disbursement record created in EDEExpress for a student record before you can modify that National SMART Grant disbursement using a Pell Grant, ACG, and National SMART Grant External Disbursement Add/Change file.

The valid 2008-2009 disbursement date range for National SMART Grant records is 7/1/2008 to 9/30/2013.

National SMART Grant Electronic Statement of Account (ESOA)

You can import the National SMART Grant-specific version of the Electronic Statement of Account (ESOA) generated by the COD System by selecting **File, Import, Pell, Electronic Statement of Account**.

To view or print imported National SMART Grant ESOA reports, go to **File, Print, Pell**, select **ESOA** as the Report, then select **National SMART Grant** as the Grant Type. As with the Pell ESOA report, you can print National SMART Grant data from a single ESOA file (by Document ID) or all ESOA data for a particular Reporting Entity ID.

Additional National SMART Grant Functionality in EExpress 2008-2009

The following National SMART Grant-specific enhancements, listed by module and software area, are available in EExpress 2008-2009:

Global

- **Updated HERA Overview Help Topic.** We updated help topics available in Global, Application Processing, Packaging, and Query online help for 2008-2009 that provide detailed information and guidance on EExpress changes related to the HERA. The topics are titled “Academic Competitiveness Grant (ACG),” “National Science and Mathematics Access to Retain Talent (SMART) Grant,” “Graduate and Professional Student PLUS Loan (Grad PLUS),” and “Other HERA Changes Overview.” The topics are accessed by clicking **Help, Help Topics** from the EExpress menu bar, selecting the **Index** tab, and typing the name of the topic you want to view.

Application Processing

- **New and Relabeled National SMART Grant NSLDS Data Elements on ISIR Record.** Four new NSLDS data elements for the National SMART Grant are included in the 2008-2009 ISIR record:
 - Percent Eligibility Used by Scheduled Award
 - Total Percent Eligibility Used by Academic Year Level
 - Award Year
 - National SMART Grant Scheduled Award

We also relabeled the NSDLS element “Year in College” to “Academic Year Level.”

NSLDS data elements included in the ISIR record are viewed in EExpress from a student’s record (**View, NSLDS**) or printed on the NSLDS report (**File, Print, App Express, NSLDS**).

Pell

- **Relabeled “College Year” as “Academic Year Level.”** We relabeled the National SMART Grant Origination field “College Year” to be “Academic Year Level.”

- **Revised Warning Message for \$0 Award Amount for Entire School Year.** EDEExpress now displays the following warning message if you try to save a National SMART Grant origination record with an Award Amount for Entire School Year of \$0: “The Award Amount for Entire School Year is zero. If this is an initial award, this record will reject at COD, since zero is not an acceptable award amount on an initial submission. If this is a correction and you are zeroing out a previous award amount, COD will accept this.”
- **Added Citizenship Status Edit for National SMART Grant Records.** National SMART Grant origination records can now only be created for students with a Citizenship Status of **1** (U.S. Citizen) or blank. The Citizenship Status field is located on the Demo tab.
- **Additional Data Edit for National SMART Grant Records.** In addition to checking the citizenship status, EDEExpress now limits your choice of Academic Year Level to 3 or 4 on National SMART Grant origination records.
- **Added Disbursement Edits for National SMART Grant Based on Funding Method.** EDEExpress now prevents National SMART Grant actual disbursements (Disbursement Release Indicator [DRI] checkbox selected [set to True]) meeting the following conditions from being saved:
 - Funding Method from Pell School setup is Just-In-Time, Pushed Cash, or Cash Monitoring 1 and the current system date is greater than seven days before the disbursement date
 - Funding Method from Pell School setup is Advance Pay and the current system date is more than seven days before the disbursement date
 - Funding Method from Pell School setup is Cash Monitoring 2 or Reimbursement and the current system date is more than zero days before the disbursement date
- **Added Student’s First, Last Name to National SMART Grant Multiple Entry.** The student’s first and last names appear on the National SMART Grant Multiple Entry Select Records grids, making it easier for you to locate and select specific students you want to update.
- **National SMART Grant Import Edit Reports Display Total Percent Eligibility Used by Academic Year Level.** EDEExpress prints the new National SMART Grant data element Total Percent Eligibility Used by Academic Year Level on the Import Edit Records Report for Common Record Response files with Document Type Codes of RS or ND, but does not store the data in the database.

- **Added National SMART Grant Data Elements to MRR Files.** The new National SMART Grant data elements Percent Eligibility Used by Schedule Award, Total Eligibility Used by Academic Year Level, and Scheduled Award are included in National SMART Grant Multiple Reporting Record (MRR) files, but only Percent Eligibility Used by Schedule Award prints on the Import Edit Report. EDEExpress does not store or print the data.
- **Added National SMART Grant Data Elements to Year-to-Date (YTD) Files.** The new National SMART Grant data elements Percent Eligibility Used by Schedule Award, Total Eligibility Used by Academic Year Level, and Scheduled Award are included in the National SMART Grant YTD Data files. However, EDEExpress does not store or print these data elements or use them when generating the Compare and Print Exceptions? report.
- **Student's First or Last Name Required in External Origination Add Records.** The student's first or last name is now required in External Origination Add import records for the National SMART Grant.
- **Relabeled Fields on National SMART Grant Electronic Statement of Account (ESOA) Reports.** On the National SMART Grant ESOA, we relabeled "Pell School Number" as "Pell Reporting School Identifier" and "Common School Identifier" as "Entity Identifier."
- **Added Grant Type to Query, File Formats, Browse.** The Grant Type field (ACG, Pell, or National SMART) can now be used in queries (Pell Query dialog box), exported in file formats (Pell File Format dialog box), and is now displayed in both the Origination and Disbursement tabs of the Browse Pell dialog box.

Graduate PLUS Loans

As a result of the HERA, graduate or professional students are now eligible to borrow under the Federal Direct PLUS Loan Program, effective with loans originated on or after July 1, 2006. The terms and conditions of the Direct Graduate and Professional Student PLUS Loan (Grad PLUS) are the same as those that apply to a PLUS loan made to parents of dependent undergraduates.

All Grad PLUS loan functions performed in EDEExpress use existing Direct Loan and COD software functionality, including tabs, menu options, and default Direct Loan and COD setup and default settings. For example, Grad PLUS origination and disbursement data is entered and modified on the Direct Loan Origination and Disburse tabs and uses default information established under Direct Loan School and COD System setup.

- As with PLUS loans, Grad PLUS loans are designated as a loan type **P** in the Loan ID generated when you originate.

Users can create Grad PLUS loan origination and disbursement records in EDEExpress 2008-2009 using the external import record layouts provided in Volume III, Section 3 (Combination System Record Layouts) of the *2008-2009 COD Technical Reference*.

Direct Loan print options enable you to print MPNs, MPN Manifests, and Disclosure Statements for Grad PLUS loan records separately from PLUS loan records.

Grad PLUS loan origination and disbursement data are exported under the Direct Loan module as part of the COD Common Record (CRAA09IN) export. Processed Grad PLUS loan data is returned by the COD System in the COD Common Record Response (CRAA09OP) and MPN Response (CRPN09OP) files.

EDEExpress Setup Requirements for Grad PLUS Loans

If you have already set up EDEExpress to process loan records, no additional setup is necessary. If you have not previously set up and used EDEExpress for processing loans, before processing Grad PLUS loan records you must set up the following EDEExpress COD system options by selecting **Tools, Setup, COD**:

- **School.** Enables you to establish the schools for which you want to process Grad PLUS loans, as well as specify certain settings that EDEExpress can apply when processing loan data. The PLUS Loan Fee Percentage and PLUS Interest Rebate Percentage apply to both the Grad PLUS loan and the PLUS loan.
- **System.** Enables you to identify the Source Entity ID, as well as certain other default settings for loan processing.
- **Disbursement.** Enables you to set up disbursement profile codes for Pell, Direct Loan, or both. These disbursement profile codes store disbursement dates, academic years, and loan periods you use at your school. Like PLUS loans, Grad PLUS loans can have up to four disbursements.

External Add – Grad PLUS Loans

You can add Graduate PLUS loan records to EDEExpress 2008-2009 using Direct Loan External Import Loan Origination Add (DIEA09OP) files. Refer to Volume III, Section 3 (Combination System Record Layouts) in the *2008-2009 COD Technical Reference* for the updated Direct Loan External Import Loan Origination Add record layout.

In most cases, data required to add PLUS origination records are also required for Grad PLUS origination records, with some exceptions. Note the following:

- **Loan Identifier (Field #1):** As with PLUS loans, use Loan Type **P** in the Loan ID for Grad PLUS loans.

- Import Type Code (Field #2): Use Import Type Code **GA** to indicate you are creating a Grad PLUS origination record.
- Loan Type (Field #4): Use Loan Type **G** to indicate you are creating a Grad PLUS origination record.
- Borrower Demographic Fields (Field #7 through Field #20): The student is the borrower for Grad PLUS loans, so you only need to provide borrower information once in Field #7 through Field #20. You do not need to duplicate this information in the student demographic fields (Field #34 through Field #45) in your file.
- MPN ID (Field #76): As with PLUS loans, use Loan Type **N** in the MPN ID for Grad PLUS loans.
- CPS Transaction Number (Field #79): While a valid CPS Transaction Number (01-99) is not required by EDEExpress for Grad PLUS origination records, you should ensure the student has a valid ISIR on file with the CPS.

For more information, see the External Import Loan Origination Add file (DIEA) record layout in Volume III, Section 3 (Combination System Record Layouts) of the *2008-2009 COD Technical Reference*.

As with other loan types, EDEExpress automatically performs the origination process for Grad PLUS records following import of an External Import Loan Origination Add file if the records contain all of the fields required for origination. For more information on origination record data that must be entered in EDEExpress to perform the origination process for Grad PLUS records (and other loan types), see the section “Direct Loan Fields Required for Origination” earlier in this document.

External Change – Grad PLUS Loans

You can modify Grad PLUS loan origination and disbursement records in EDEExpress using Direct Loan External Import Change (DIEC09OP) files. Refer to Volume III, Section 3 (Combination System Record Layouts) of the *2008-2009 COD Technical Reference* for the Direct Loan External Change record layout and Direct Loan External Import Change Field Numbers.

The Direct Loan External Import Change process functions the same for Grad PLUS records as for other loan types. Each record in your Direct Loan External Import Change file must contain the borrower’s loan ID, the field number of the field to be updated, and the updated value.

Grad PLUS MPN and MPN Manifest

You can print Grad PLUS MPNs and Grad PLUS MPN Manifests separately from PLUS MPNs and PLUS MPN Manifests by selecting **File, Print, Direct Loan**.

The rules for multi-year use and expiration of the PLUS MPN are the same for both PLUS and Grad PLUS borrowers. The same MPN form is used for both PLUS and Grad PLUS loan records, although the two loan types must be sent to the COD System in separate MPN Manifests.

Note: As with PLUS loans, the Grad PLUS MPN ID uses **N** for the Loan Type.

MPN manifests containing Grad PLUS loans can be regenerated in EDEExpress in the same manner as other loan types by clicking **File, Print, Direct Loan** and selecting **Manifest Document Regeneration**.

A revised Direct PLUS Loan MPN is available for users as of October 2007. EDEExpress 2008-2009 Release 2.0 prints Grad PLUS MPNs using the revised form. You should discontinue using the PLUS MPN addendum and all paper PLUS MPN forms printed prior to October 2007 and begin using the revised form immediately.

The same Direct PLUS MPN form is used for both Grad PLUS and PLUS loans. When you select the report type to print, the following statements print in Section A:

Report Type	Printed Statement
MPN-PLUS	I am a Parent of a Dependent Undergraduate Student
MPN-Grad PLUS	I am a Graduate or Professional Student

Grad PLUS Disclosure Statements

You can print Disclosure Statements for Grad PLUS loan records separately from Disclosure Statements for PLUS loan records by selecting **File, Print, Direct Loan**.

Your school can print Disclosure Statements onsite for your Grad PLUS borrowers or request that the COD System print and mail them to the borrower instead. For more information on setting up the Disclosure Print Indicator in EDEExpress Direct Loan setup to indicate your preference, see the help topic “Disclosure Statement Print Indicator” in the EDEExpress 2008-2009 software.

As with a PLUS loan, you cannot print a Grad PLUS Disclosure Statement in EDEExpress unless the credit decision status is **A** (Credit approved), **C** (Credit overridden; new credit information provided), or **E** (Credit overridden; endorser OK).

ED has produced PDF versions of the revised Disclosure Statement documents.

- Print specifications for the PLUS Disclosure Statement have been updated and are available in Volume VI, Section 7 of the *2008-2009 COD Technical Reference*.
- PDF versions of the revised PLUS Disclosure Statement are available now on the Direct Loan Web site (ed.gov/offices/OSFAP/DirectLoan/mpn.html).

ED has also printed the revised Plain Language Disclosures (PLDs). Word versions of the revised PLDs have also been produced.

- The paper revised PLDs are available for schools to order in bulk from the Federal Student Aid's online publication ordering system Web site (FSAPubs.org).
- Word versions of the revised PLDs are available now on the Direct Loan Web site (ed.gov/offices/OSFAP/DirectLoan/mpn.html).

Additional Grad PLUS Functionality in EExpress 2008-2009

The following Grad PLUS-specific enhancement is available in EExpress 2008-2009:

- **Updated HERA Overview Help Topics.** We updated help topics available in Pell, Direct Loan, and EExpress COD online help for 2008-2009 that provide detailed information and guidance on EExpress changes related to the HERA. The topics, which were originally added in EExpress 2006-2007, are titled “Academic Competitiveness Grant (ACG),” “National Science and Mathematics Access to Retain Talent (SMART) Grant,” “Graduate and Professional Student PLUS Loan (Grad PLUS),” and “Other HERA Changes Overview.” The topics are accessed by clicking **Help, Help Topics** from the EExpress menu bar, selecting the **Index** tab, and typing the name of the topic you want to view.

Additional EExpress 2008-2009 Functionality Related to the HERA

The following additional enhancements related to the HERA, listed by module, are available in EExpress 2008-2009:

Global

- **Updated HERA Overview Help Topics.** We updated help topics available in Pell, Direct Loan, and EExpress COD online help for 2008-2009 that provide detailed information and guidance on EExpress changes related to the HERA. The topics, which were originally added in EExpress 2006-2007, are titled “Academic Competitiveness Grant (ACG),” “National Science and Mathematics Access to Retain Talent (SMART) Grant,” “Graduate and Professional Student PLUS Loan (Grad PLUS),” and “Other HERA Changes Overview.”

The topics are accessed by clicking **Help, Help Topics** from the EDEExpress menu bar, selecting the **Index** tab, and typing the name of the topic you want to view.

Direct Loan

- **Origination Fee Defaults to 2.0% for Subsidized and Unsubsidized Loans.** Provisions of the Higher Education Reconciliation Act of 2005 (the HERA), Pub. L. 109-171, reduced the origination fee charged to Direct Stafford Loan borrowers to 2.0 percent for 2008-2009 loans, provided the earliest actual disbursement (Disbursement Release Indicator = True, or selected) is made on or after July 1, 2008. As a result, the Sub/Unsub Loan Fee Percentage in Direct Loan School setup (**Tools, Setup, COD, School, Direct Loan**) defaults to the reduced origination fee percentage of 2.0 percent for 2008-2009 subsidized and unsubsidized loan records.

Note: If you are originating loans in EDEExpress 2008-2009 with an earliest disbursement date *before* July 1, 2008, you must change the Sub/Unsub Loan Fee Percentage field to 2.5 in Direct Loan School setup before originating those loans. If you want to subsequently originate 2008-2009 loans with an earliest disbursement date *on or after* July 1, 2008 you must change the Sub/Unsub Loan Fee Percentage field back to 2.0 in Direct Loan School setup before originating those loans.

Note: If you import Prior Year User-Defined Queries, Setup, and File Formats from EDEExpress 2007-2008 into EDEExpress 2008-2009 with the COD School (Direct Loan School) checkbox selected, be aware that the default value for the Sub/Unsub Loan Fee Percentage will be set to 2.500. Make sure that you return the Sub/Unsub Loan Fee Percentage value in COD School setup (Direct Loan) to the 2008-2009 default of 2.000 before you originate any subsidized or unsubsidized loans with the earliest disbursement date on or after July 1, 2008.

For more information on this change from a COD System processing perspective, see the “Disbursement Net Amount, Disbursement Fee Amount, and Interest Rebate Amount Calculations” section of Volume II, Section 1 (Implementation Guide) of the *2008-2009 COD Technical Reference*.

Where to Get More Information

For more information regarding the HERA and the EDEExpress software, the COD System, and other Federal Student Aid systems, consult the following:

- **2008-2009 COD Technical Reference, Volumes I, II, and VI**, available in the Technical References and Guides section of fsadownload.ed.gov.
- **Dear Partner/Colleague Letters** related to the HERA. Go to ED's Information for Financial Aid Professionals (IFAP) Web site, located at ifap.ed.gov, and look for the prominent link to HERA-related documents.
- **EDEExpress for Windows 2008-2009, Release 1.0 and Release 2.0 Desk References** (HERA Addendums), available in the Software and Associated Documents section specific to EDEExpress for Windows 2008-2009 on fsadownload.ed.gov.
- **CPS/SAIG Technical Support**. If you need technical support for EDEExpress, call CPS/SAIG Technical Support at **800/330-5947 (TDD/TTY 800/511-5806)**. Technical support representatives are available 7 a.m.–7 p.m. CT, Monday through Friday, excluding federal holidays. If you prefer, you can e-mail inquiries to CPSSAIG@ed.gov. A technical support specialist will respond to your e-mail within one business day.
- **COD School Relations Center**. If you have questions about the COD System, contact the COD School Relations Center at 800/4PGRANT (800/474-7268) for ACG, National SMART Grant, and Pell Grant or 800/848-0978 for Direct Loan. You can also e-mail CODSupport@acs-inc.com.
- **Federal Student Aid's Research and Customer Care Center (RCCC)**. If you have other questions regarding the HERA, contact the RCCC at **800/433-7327** or 202/275-5532 (fax). You can also e-mail the RCCC at fsa.customer.support@ed.gov. Hours are 9 a.m. to 5 p.m. ET, Monday through Friday, excluding federal holidays.

TEACH Grant Appendix

Teacher Education Assistance for College and Higher Education Grant

The College Cost Reduction and Access Act (the CCRAA), Pub.L. 110-84, authorized the Teacher Education Assistance for College and Higher Education (TEACH) Grant Program for implementation beginning with the 2008-2009 award year. The (TEACH) Grant Program provides up to \$4,000 a year in grant assistance to a student who agrees to serve for at least four years as a full-time teacher in a high-need field in a public or private elementary or secondary school that serves students from low-income families. A TEACH Grant recipient who does not complete the required teaching within a specified timeframe, or fails to meet certain other requirements of the TEACH Grant Program, will be required to repay the TEACH Grant as a Direct Unsubsidized Loan under the William D. Ford Federal Direct Loan (Direct Loan) Program.

Before receiving a TEACH Grant, a student must complete a TEACH Grant Agreement to Serve (ATS), using the ATS Web site, for each year in which a TEACH Grant is awarded. The ATS Web site is located at teach-ats.ed.gov. The ATS explains the teaching service requirements that a student must meet in exchange for receiving a TEACH Grant, specifies the conditions under which a TEACH Grant will be converted to a Direct Unsubsidized Loan, and includes the student's agreement to repay the TEACH Grant as a Direct Unsubsidized Loan, with interest accrued from the date of each TEACH Grant disbursement, if he or she does not meet the requirements of the TEACH Grant Program. The ATS also provides information on the terms and conditions associated with repaying a TEACH Grant that is converted to a Direct Unsubsidized Loan. The TEACH Grant Web site is teachgrant.ed.gov.

TEACH Grant functionality is installed as a separate module in EDEXpress 2008-2009, beginning with Release 3.0, enabling you to create, export, and import TEACH Grant origination and disbursement records. You can also import ATS and Booking Notification Response files received from the COD System.

Origination and disbursement data for the TEACH Grant is processed through the COD System using the COD Common Record and COD Common Record Response (CRAA09OP). EDEExpress enables you to export TEACH Grant origination and disbursement records separately or in the same Common Record file (CRAA09IN) with Direct Loan and Pell module records. You can also print reports and lists from the TEACH module, as well as print existing reports from the COD module that have been updated to include TEACH Grant data.

In the sections below we provide additional detail and guidance to EDEExpress combination users regarding the TEACH Grant, as well as other EDEExpress enhancements related to the TEACH Grant.

EExpress Setup Requirements for the TEACH Grant

COD Setup

Before processing TEACH Grant records, you must set up the following COD system options. From the menu bar, select **Tools, Setup**, then choose **COD**.

- **School** – TEACH Grant School setup enables you to establish the school profile information and default options and settings that will apply when processing TEACH Grant origination and disbursement records. Select **Tools, Setup** from the menu bar, then choose **COD, School, TEACH** to access School setup.

Note: Only the first six digits of the School OPE ID are required.

The values for Funding Method are:

- **1** (Advance Pay)
- **2** (Cash Monitoring 1 – CM1)
- **3** (Cash Monitoring 2 – CM2)
- **4** (Reimbursement)

Selecting the Default School? checkbox automatically fills the Add TEACH dialog box with the School OPE ID and Federal School Code that you enter in School Setup. It automatically fills the OPE ID and Federal School Code on the Import dialog box when importing Origination Data – ISIRs into TEACH.

If you want to calculate disbursements using pennies, select the Calculate Amounts Using Pennies checkbox.

- **System** – The TEACH Grant section of System setup enables you to identify the Source Entity ID and other default settings that will be used for TEACH Grant processing. In COD System setup, you can elect to combine TEACH Grant, Pell Grant (including the ACG and National SMART Grant), and Direct Loan records when you export a COD Common Record file. You can override the Combine Files function from the Export dialog box when a COD Common Record file is exported. Select **Tools, Setup** from the menu bar, then choose **COD, System** to access System setup.
- **Disbursement** – Disbursement setup enables you to establish disbursement profile codes for the TEACH Grant. Disbursement Profile setup is required prior to originating TEACH Grant records. You can establish disbursement profiles for TEACH Grants only

or combine a profile with Pell Grant and/or Direct Loan. Select **Tools, Setup** from the menu bar, then choose **COD, Disbursement** to access Disbursement Profile setup. You can enter up to 20 disbursements. The disbursement date must be on or after 01/01/2008.

Security Groups Setup

The Security Groups dialog box includes a tab for TEACH Grant security setup, enabling you to assign access privileges to specific TEACH Grant functions by groups of users. Select **Tools, Setup** from the menu bar, then choose **Global, Security Groups**.

User Database Setup

The User Database (**Tools, Setup, Global, User Database**) in EDExpress can be used, for example, to track TEACH Grant award criteria. You could create “YES OR NO” fields for items such as students receiving comment code 281 on their ISIRs, students scoring above the 75th percentile on college admissions tests, or students maintaining a cumulative GPA of at least 3.25.

COD Web Site Settings

The COD System implemented version 3.0a of the COD Common Record Extensible Markup Language (XML) Schema in June 2008. This version incorporates a new block for TEACH Grant awards and other changes throughout the schema to comply with standards established by the Postsecondary Electronic Standards Council (PESC). For complete information about the schema version 3.0a, refer to “COD Common Record XML Schema Version 3.0a” on the IFAP Web site (ifap.ed.gov/cod/CODSchema3pt0a060408.html). Use of schema version 3.0a for the 2008-2009 award year will be required only for Common Record documents that contain TEACH Grant origination and disbursement information.

Schools participating in the TEACH Grant program must be sure that they select the correct options on the COD Web site in order to successfully import TEACH Grant Web Responses (CRWB09OP) into EDEExpress. This includes selection of the 3.0a schema and the option for the Full Response rather than the Standard Response.

Important Note: If you are currently using EDEExpress 2008-2009, Release 2.0 to exchange Pell Grant, Academic Competitiveness Grant (ACG), National SMART Grant, or Direct Loan data with the COD System, do **not** install Release 3.0 until you have imported all pending COD Common Record Response files (including Web responses) for origination or disbursement data submitted using Release 2.0. Federal Student Aid strongly recommends that **all** users of EDEExpress 2008-2009 install Release 3.0, even if you do not plan to award TEACH Grants. If you do not install Release 3.0, your ability to import Web-based responses (CRWB) from the COD System will be adversely impacted.

If you have any questions about your school’s COD Web site settings, contact the COD School Relations Center at **800/474-7268** for Grants or **800/848-0978** for Direct Loans. You can also e-mail CPSSAIG@ed.gov.

Origination and Disbursement Add/Change

You can create or modify TEACH origination and actual disbursement records by importing an external TEACH Grant Data file. Follow the External TEACH Grant Data record layout (TGED09OP) in the *2008-2009 Common Origination and Disbursement (COD) Technical Reference, Volume III, Section 3* to create or modify an ASCII file of the required data and import the file into EDEExpress. You should also refer to the TEACH Grant Data record layout for the relationship between the Disbursement Profile Code and disbursements. TEACH Grants can have up to 20 disbursements. Disbursement dates must be 01/01/2008 or later. Select **File, Import** from the menu bar, then choose **TEACH, External TEACH Grant Data (TGED)**.

The technical reference is available for download in Adobe PDF format from ED's Federal Student Aid Download (FSAdownload) Web site at fsadownload.ed.gov.

Origination Data Elements

The data elements required for origination are:

- CPS Transaction #
- College Grade Level
- Enrollment Date
- Award Amount for Entire School Year
- Disbursement Profile Code
- Teacher Expert Indicator
- School Internal Sequence Number
- Origination Cross Reference

Agreement to Serve (ATS)

Each year, the student must sign a TEACH Grant ATS electronically at this Department of Education Web site: teach-ats.ed.gov. The ATS cannot be printed from EDEExpress. The TEACH Grant ATS specifies the terms and conditions by which a recipient must abide.

When the student completes an ATS online, an ATS Response file (CRAT09OP) is generated by the COD System and sent to the school's SAIG mailbox. ATS Responses indicate an accepted, rejected, or pending status. To import ATS Responses, select **File, Import** from the menu bar, then choose **TEACH, COD Common Record Response**. When you import this response file, EDEExpress updates the ATS Information on the TEACH Grant origination record with the ATS ID and ATS Status (Accepted, Rejected, or Pending).

When you import an ATS Response file (CRAT09OP) containing ATS data for which there is no TEACH origination record in EDEExpress, the Import Records Edit Report indicates that there is no matching TEACH origination. If the student is attending your school and you have verified the student is eligible to receive a TEACH Grant, create an origination record in EDEExpress and submit it to COD. The ATS Status in EDEExpress updates to **Accepted** after you import the COD Response file.

When you submit a TEACH Grant origination for which an accepted ATS already exists in the COD System, the ATS status is returned in the Origination Response file (CRAA09OP) indicating an accepted ATS is already on file and updates the ATS Status in EDEExpress to **Accepted**.

When a TEACH Grant origination is received in the COD System for which no accepted ATS is on file, the ATS Status **Rejected** is returned in the Origination Response (CRAA09OP). After the ATS for that student's TEACH Grant award is received in the COD System, the ATS Response file (CRAT09OP) is created and returned to the school. When the school imports the file into EDEExpress, the ATS ID is updated and the ATS Status is changed to **Accepted**.

New TEACH Grant Functionality in EExpress

EExpress 2008-2009, Release 3.0 adds new TEACH Grant tabs, menu options, and setup parameters throughout the software that mirror the functionality and “look and feel” of existing Pell Grant and Direct Loan functionality.

For example, TEACH Grant origination and disbursement data is entered and modified on the TEACH Grant sub-tabs of the Origination and Disburse tabs, respectively. Similarly, functionality shared by the Direct Loan and Pell Grant modules under EExpress COD menus (such as COD System Setup, COD Disbursement Profile setup, and reports under COD Print) now include TEACH Grant parameters and data.

Note: For more information and guidance regarding TEACH Grant functionality in EExpress 2008-2009, Release 3.0, see the help topic “Teacher Education Assistance for College and Higher Education Grant (TEACH Grant)” in EExpress online help. You can access online help from the EExpress main menu by selecting **Help, Help Topics**.

Release 3.0 adds the following TEACH Grant functionality:

TEACH Grant Setup

TEACH Grant School Setup (Tools, Setup, COD, School) – We added a unique School setup tab, enabling you to provide school profile information and default options and settings that are applied when processing TEACH Grant origination and disbursement records.

TEACH Grant Disbursement Profile Setup (Tools, Setup, COD, Disbursement) – We modified the Disbursement Profile setup tab to enable you to establish unique disbursement profile codes for TEACH Grant records. You can share disbursement profile codes for Pell Grant, Direct Loan, and TEACH Grant records. You must define at least one disbursement profile code before you can originate TEACH Grant records.

TEACH Grant System Setup (Tools, Setup, COD, System) – The TEACH Grant section of System setup enables you to identify the Source Entity ID and other default settings that are applied when processing TEACH Grant records.

TEACH Grant Security Groups Setup (Tools, Setup, Global, Security Groups) – The Security Groups setup dialog box now includes a tab for TEACH Grant security setup, enabling you to assign access privileges to TEACH Grant functionality by groups of users.

TEACH Grant File Formats Setup (Tools, File Formats, TEACH) – You can now use File Format setup to select TEACH Grant data elements you want to include in an external export.

TEACH Grant Entry

TEACH Grant Origination Tab – We added a new TEACH Grant origination tab, which is accessible as a sub-tab of the Origination tab within a student’s record. Origination records can be created by manual entry, importing Institutional Student Information Record (ISIR) data, or by importing an External TEACH Grant Data file (TGED09OP).

TEACH Grant Disbursement Tab – We added a new TEACH Grant disbursement tab, which is accessible as a sub-tab of the Disburse tab within a student’s record. Disbursement records can be created by manual entry, TEACH Grant Multiple Entry, or by importing an External TEACH Grant Data file (TGED09OP).

TEACH Grant Multiple Entry – TEACH Grant Multiple Entry enables you to modify various TEACH Grant origination and disbursement fields for multiple students at one time. You can update each field with the information you want changed on all records and specify the group of records by using selection criteria, by entering Social Security Numbers (SSNs), or by importing an SSN file.

TEACH Grant Export Types

The following TEACH Grant export options are located under **File, Export, TEACH**:

COD Common Record – TEACH Grant origination and disbursement data are exported in the COD Common Record format using the same message class (CRAA09IN) as Direct Loan and Pell Grant records. You can combine TEACH Grant, Pell Grant (including ACG and National SMART Grant), and Direct Loan records when you export a COD Common Record file. You can also override the Combine Files function in the Export dialog box when a COD Common Record file is exported.

TEACH Grant External Export – We added a TEACH Grant External Export option, which enables you to export TEACH Grant data for use in an external system. You must create and select a TEACH Grant File Format before exporting that indicates the fields you want to export and the order they should appear in your export file.

TEACH Grant Import Types

The following TEACH Grant import options are located under **File, Import, TEACH**:

COD Common Record Receipt/Response – TEACH Grant origination and disbursement records are imported in the COD Common Record format using the same message class (CRAA09OP) as Direct Loan and Pell Grant records. ATS Responses (CRAT09OP) and

Booking Notification Responses (CRBN09OP) are also imported as COD Common Record responses.

Origination Data – ISIRs – You can import ISIR data from the App Express module to create TEACH Grant origination records. Only ISIRs with an expected family contribution (EFC) will import into the TEACH Grant module.

Note: When importing ISIR data into the TEACH Grant module, you can include TEACH Grant award amounts added to packaging records.

External TEACH Grant Data – You can create and update TEACH Grant origination and disbursement records in EDEExpress by importing an External TEACH Grant Data file. Follow the External Import record layout (TGED09OP) in the *2008-2009 Common Origination and Disbursement (COD) Technical Reference*, Volume III to create an ASCII file of TEACH Grant data you can import into EDEExpress.

TEACH Grant Reports

The following TEACH Grant reports are printed from **File, Print, TEACH:**

Origination Record – The TEACH Grant Origination report displays all fields and data entered on a student's TEACH Grant origination record. You can print edits and disbursement information on the report by selecting the option in the Print dialog box.

Origination List – The TEACH Grant Origination List report displays a list of TEACH Grant origination records based on the criteria you specify in the Print dialog box.

List – Anticipated Disbursements – The TEACH Grant List–Anticipated Disbursements report provides three report type options for TEACH Grant records in the EDEExpress database:

- Anticipated disbursements with corresponding actual disbursements
- Anticipated disbursements with pending actual disbursements
- Anticipated disbursements with corresponding and pending actual disbursements

List – Actual Disbursements – The TEACH Grant List–Actual Disbursements report provides a detailed list of TEACH Grant actual disbursements in your database and summary totals. You can filter the report to display records with:

- Booked actual disbursements
- Unbooked actual disbursements
- Booked and unbooked actual disbursements

List – ATS Status – The List–ATS Status report contains information to help you monitor your Agreement to Serve (ATS) process for TEACH Grant records in your database, and provides the ATS status for each record.

RL – User-Defined Format – The RL–User-Defined Format report provides a record layout for all fields selected in a specified TEACH Grant File Format code, including field lengths and field descriptions. Your technical support staff can use this record layout to interpret the results of a TEACH Grant External Export file you created using a specified TEACH Grant File Format.

TEACH Grant Query

TEACH Grant Query (Tools, Query, TEACH) – We added a TEACH tab to Query, which enables you to access several new predefined TEACH Grant data queries as well as create and save new TEACH Grant data queries. You can use TEACH Grant queries for a variety of tasks in EDEExpress, including filtering TEACH Grant report results to specific student groups and specifying records to update using TEACH Grant Multiple Entry.

TEACH Grant Browse and View

TEACH Grant Browse (Tools, Browse, TEACH) – We added a TEACH Browse dialog box to display quick views of TEACH Grant information in your database.

- The TEACH Origination and Disburse tabs display information about TEACH Grant origination and disbursement records currently in the EDEExpress database.
- The TEACH Document Activity tab displays information about origination and disbursement documents you have imported or exported.
- The TEACH Query Fields grid lists fields available for queries, field lengths, the table and field name where the field is stored, and the valid content for each field.

TEACH Grant Processed Edits View (View, Processed Edits) – Select **View, Processed Edits** from the TEACH Grant Origination or Disbursement tab to view reject edit codes assigned to the record by the COD System as a result of data processing.

Enhancements to Existing EExpress 2008-2009 Functionality

The following enhancements have been made to existing EExpress 2008-2009 functionality for the TEACH Grant.

Global Enhancements

Demo Tab

- **TEACH Entrance Interview, Exit Counseling Date Fields Added to Demo Tab and Global Demographic External Import** – We added TEACH Entrance Interview Date and TEACH Exit Counseling Completed Date fields to the Demo tab for schools who want to conduct their own TEACH Grant entrance and exit counseling and record the dates in EExpress. These fields can only be updated using manual entry or importing demographic data (**File, Import, Global, Demographic Data**). We added the fields to the Import Demographic Record Layout as fields 34 and 35, with a valid date range of 19000101 to 20991231. To print the record layout select **File, Print, Global** and select the **RL–Demographic Data** report.
- **Field Added to Demo Tab Indicating TEACH Grant Record** – A new Demo tab field labeled “TEACH Records?” indicates the student record you are viewing has an existing TEACH Grant record in EExpress.

File Management Setup

- **TEACH Grant Message Classes Added to File Management Setup** – We added new TEACH Grant import message classes to File Management setup (**Tools, Global, File Management**). You can modify the default location for these import files as needed.

Global Print

- **TEACH Grant Added to Student Summary Report** – TEACH Grant award information is now included in the Packaging section of the Student Summary report.

Application Processing Enhancements

Application Processing Import

- **ISIR Import Modified to Identify Records With Existing TEACH Grant Awards** – We updated ISIR import (under **File, Import, App Express**) to enable users to select an option

that identifies incoming ISIR records that have an existing TEACH Grant record in the EDEXpress database. EDEXpress also indicates records with existing Packaging, Pell Grant, or Direct Loan records on the import edit report if you select this checkbox.

Application Processing Query

Predefined Application Processing Query Added for TEACH Grant SAR Comment Codes

– We added a predefined Application Processing query labeled TEACH Grant Comment Codes. When used as a selection criteria filter, this query limits the results of the function you are performing (such as ISIR print) to ISIR transactions that include TEACH Grant SAR comment codes 281 or 282.

Packaging Enhancements

Fund Maintenance Setup

TEACH Grant Aid Type Added to Fund Maintenance Setup – We updated Packaging Fund Maintenance setup (**Tools, Setup, Packaging, Fund Maintenance**) to add a unique aid type (**T**) for the TEACH Grant.

Note: Aid type **T** cannot be added to a Packaging award methodology.

Packaging Entry and External Import

Manual Entry, Multiple Entry, External Import of TEACH Grant Awards Enabled – Packaging users can now award TEACH Grant funds to student records using aid type **T**. TEACH Grant funds can be awarded manually on student records, by using Packaging Multiple Entry, or by importing a Packaging External Import – Add Fund Amounts file.

Note: TEACH Grant funds must be awarded in Packaging using aid type **T** if you want to import Packaging data into the TEACH Grant module to create origination records.

Packaging Print

TEACH Grant Statistics Added to Measurement Tools – Funds Report – We modified the Measurement Tools – Funds report to include Total Amount of TEACH Grants Awarded, Total Number of Students Receiving TEACH Grants, and Percentage of Students Receiving TEACH Grants.

Packaging Query

Packaging Queries Added, Modified for TEACH Grant – We added a predefined Packaging query labeled HAS TEACH RECORD with valid values of **Y** (Yes) and **N** (No). We also

modified the Packaging query FUND AID TYPE to include aid type **T** (TEACH) as a field value.

Pell Grant and Direct Loan Enhancements

Pell Grant and Direct Loan Export

TEACH “Combine” Options Added to Pell Grant, Direct Loan Common Record Export –

We updated the Selection Criteria section in the Pell Grant and Direct Loan Export dialog box to include TEACH Origination and TEACH Disbursement buttons. This enables you to combine TEACH Grant records in the same COD Common Record export file (CRAA09IN) with Pell Grant and Direct Loan records.

Note: If you are exporting from the Pell or Direct Loan tab, the checkbox for the current tab is selected and disabled. The TEACH checkbox is selected if you enabled the Combine Module(s) functionality in COD System setup (**Tools, Setup, COD, System**). You can clear the TEACH checkbox if you do not want to include those records with Pell Grant and Direct Loan records in the export file.

EExpress COD Enhancements

COD Print

- **TEACH Grant Data Added to EExpress COD Reports** – We updated the List–Student Records in Document, List–Document Activity, and List–Disbursement Profile Setup reports to include data regarding TEACH Grant documents and setup. These reports are printed from **File, Print, COD**.

Where to Get More Information

- EDEExpress for Windows 2008-2009 Online Help. For basic guidance and information on using the EDEExpress software, select **Help, Help Topics** from the EDEExpress menu bar. You can view the main list of EDEExpress Help topics by module on the **Contents** tab or scroll through available Help topics on the **Index** tab.
- The TEACH Grant page of The U.S. Department of Education's (ED's) Web site Student Aid on the Web, located at teachgrant.ed.gov.
- The TEACH Agreement to Serve Web site, located at teach-ats.ed.gov.
- Electronic announcements and Dear Colleague letters related to the TEACH Grant. Go to ED's Information for Financial Aid Professionals (IFAP) Web site, located at ifap.ed.gov, and check the Electronic Announcements and Dear Partner/Colleague Letters sections under Letters & Bulletins.
- The *2008-2009 Common Origination and Disbursement (COD) Technical Reference* available in the Technical References and Guides section of fsadownload.ed.gov.
- If you need technical support for EDEExpress, call CPS/SAIG Technical Support at **800/330-5947 (TDD/TTY 800/511-5806)**. Technical support representatives are available 7 a.m. to 7 p.m. CT, Monday through Friday, excluding federal holidays. If you prefer, you can e-mail inquiries to CPSSAIG@ed.gov. A technical support specialist will respond to your e-mail within one business day.
- For questions regarding TEACH Grant processing or questions related to the Common Record layout, contact the COD School Relations Center at **800/474-7268** for Grants or **800/848-0978** for Direct Loans. You can also e-mail CODSupport@acs-inc.com.
- If you have other questions regarding the TEACH Grant, contact Federal Student Aid's Research and Customer Care Center (RCCC) at **800/433-7327** or 202/275-5532 (fax). You can also e-mail the RCCC at fsa.customer.support@ed.gov. Hours are 9 a.m. to 5 p.m. ET, Monday through Friday, excluding federal holidays.