

08V-613

Safety Recall

Subject: Fuel Supply Pump Coupler Replacement
Date: 01-05-2009
Bulletin: R0028
Campaign #: A6160
Affected Models: Certain 2008 ND8J (238), NE8J (268), NJ8J (268A), NV8J (338)

Important: Verify on the Hino DCS Warranty System that the vehicle still needs to have this work performed.

Description:

This bulletin includes the instructions for the replacement of the fuel supply pump drive coupling.

Condition:

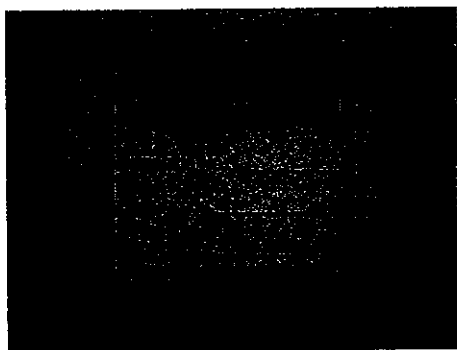
In the subject vehicles, due to processing of improper shape of the coupling between the supply pump and the air compressor, there is a possibility that if the coupling cracks, the gear train and valves of the engine could break and the engine may stop running, which would disable the power steering system, stop supply of air to the air tank and may cause insufficient braking power.

Subject Vehicles:

Certain 2008 ND8J (238), NE8J (268), NJ8J (268A), and NV8J (338) Hino conventional trucks assembled at the Long Beach, CA. and Williamstown, WV assembly plants.

Before You Begin:

Read and understand all instructions and procedures before you begin. Read and observe all Caution and Warning safety alerts that precede these instructions while following these procedures. The alerts help to avoid damage to components, serious personal injury, or both.



Once Recall is completed

Fill out the Recall Completion sticker as shown in the picture to the left. This sticker should be attached to the left door jam above the V.I.N. decal.

Safety Recall

Park the vehicle on a flat and level surface.

Apply the parking brake.

Shift transmission to NEUTRAL.

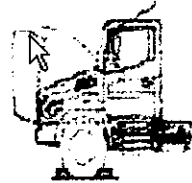
Block the wheels to prevent the vehicle from moving.

Use care when working around surfaces which may be hot.

Wear safety glasses to prevent eye injuries.

When opening and closing the hood, make sure no one is around to prevent opening or closing the hood onto them.

Confirm the engine is stopped, the starter switch is in the off (LOCK) position, and the key is removed.



Required Parts:

Engine Model	Part Number	Description	Quantity
JO8E-TV	S040010568	Fuel Supply Pump Coupling Kit	1
JO8E-TW			

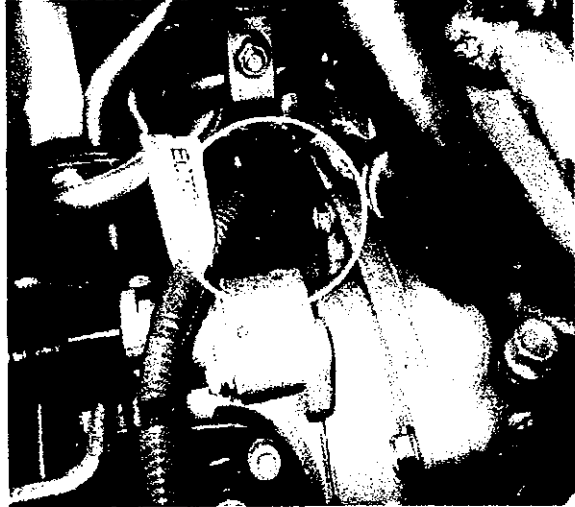
Fuel Supply Pump Coupling Kit Contents			
		JO8-TV 6 Cyl.	JO8E-TW 6 Cyl.
Part Number	Description	Quantity Contained in Kit # S040010568	
22670E0010	Coupling Assy.		1
SZ30101054	O-Ring		1
SL72301414	Washer, Soft (M14 Joint Bolt)		2
SL72301010	Washer, Soft (M10 Joint Bolt)		2

1. After carefully opening the hood, remove the nut and clamp at the engine oil dipstick tube.

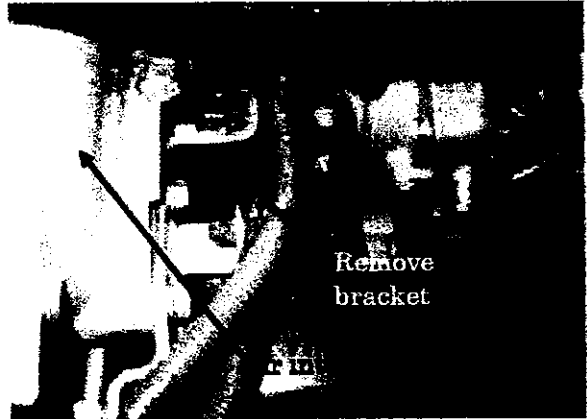


Safety Recall

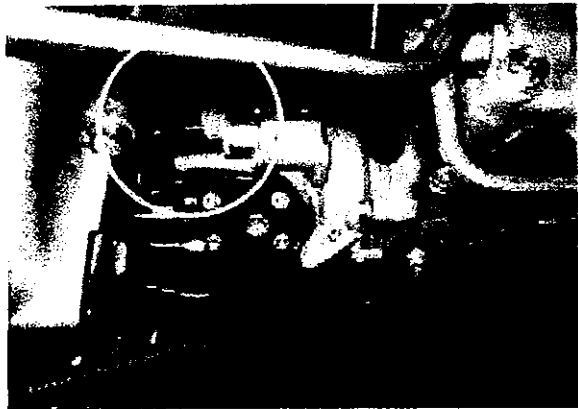
2. Disconnect the fuel temperature sensor harness from the supply pump.



3. Remove the engine oil dipstick tube bracket from the side of the air intake pipe.



4. Disconnect the suction control valve harness from the supply pump.



Safety Recall

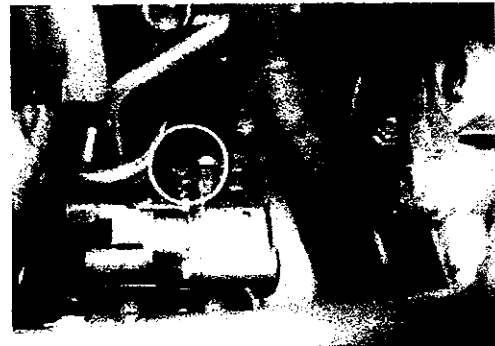
5. Remove the nut and clamp that secures the outlet pipe.



CAUTION: Cover the open ends of the fuel line to prevent dirt from entering the fuel system.

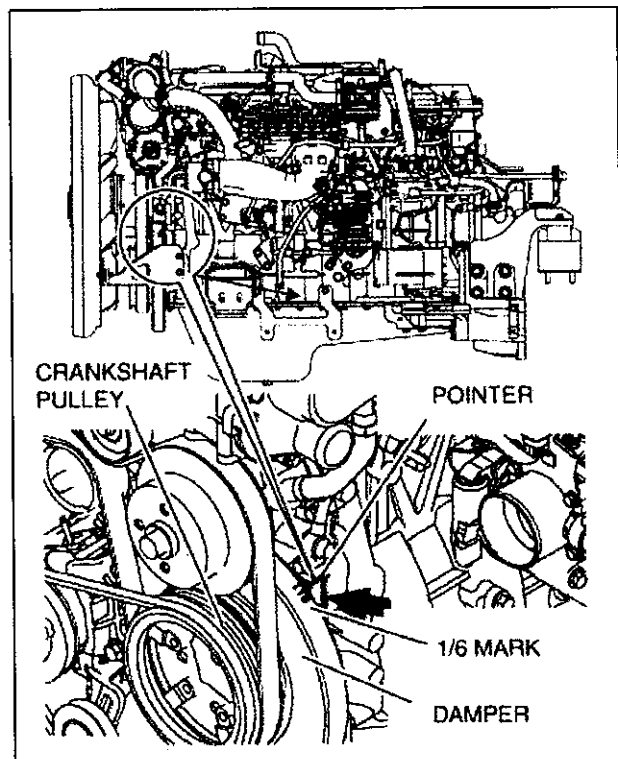
6. Remove the return pipe banjo bolt from the top of the supply pump.

Discard the soft washers.



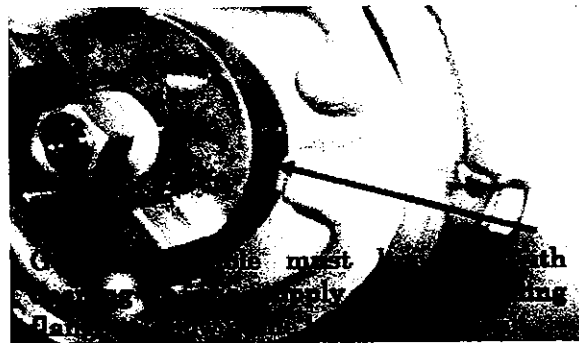
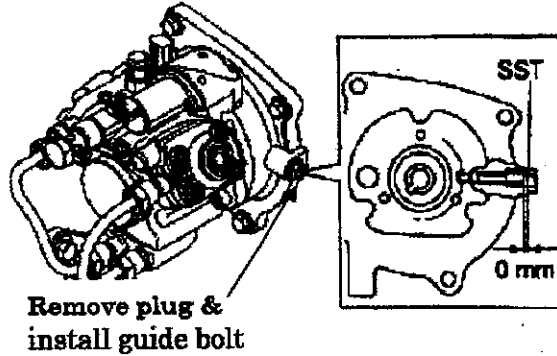
7. Rotate the engine clockwise until the 1/6 mark on the damper aligns with the pointer.

Refer to the Engine Introduction (Engine Tune Up section) of the Workshop Manual for the engine rotating procedure.



Safety Recall

8. Remove the plug from the side of the supply pump bearing holder and install the guide bolt (SST # SZ10508067).

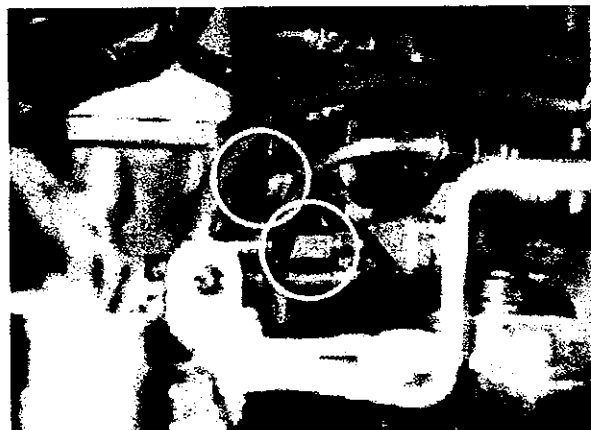


NOTE: The guide bolt must be fully threaded into the supply pump bearing holder. If the guide bolt will not fully thread into the supply pump bearing holder, return to Step 7 and confirm that the engine is in the correct position.

CAUTION: Cover the open ends of the fuel lines to prevent dirt from entering the fuel system.

9. Remove the outlet pipe flare nut and the return pipe banjo bolt from the rear of the supply pump.

Discard the soft washers from the banjo bolt connection.



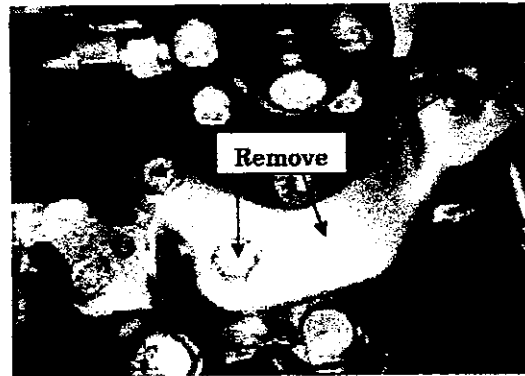


A Toyota Group Company

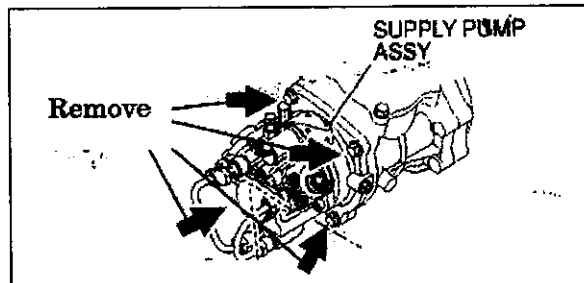
TRUCKS™

Safety Recall

10. Remove the three bolts and bracket under the supply pump.



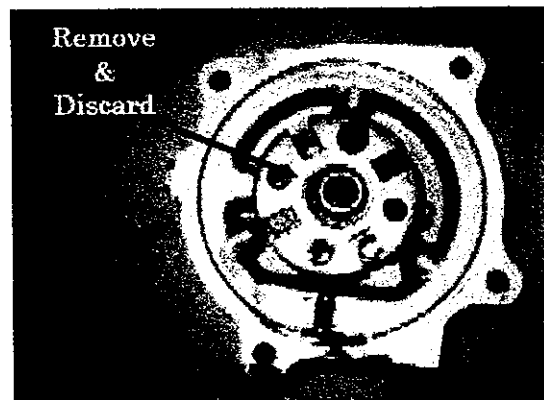
11. Remove the four bolts holding the supply pump to the air compressor.



12. Lower the supply pump from the engine.

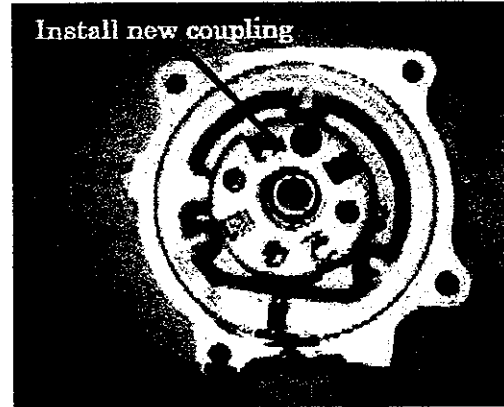


13. Remove and discard the coupling.

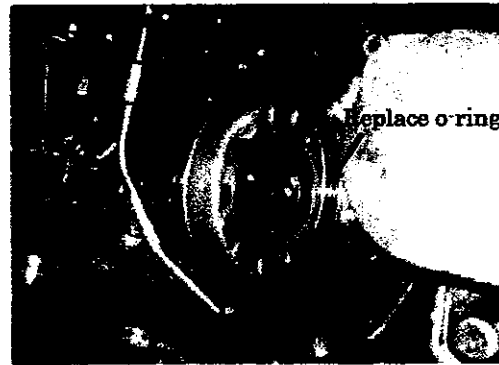


Safety Recall

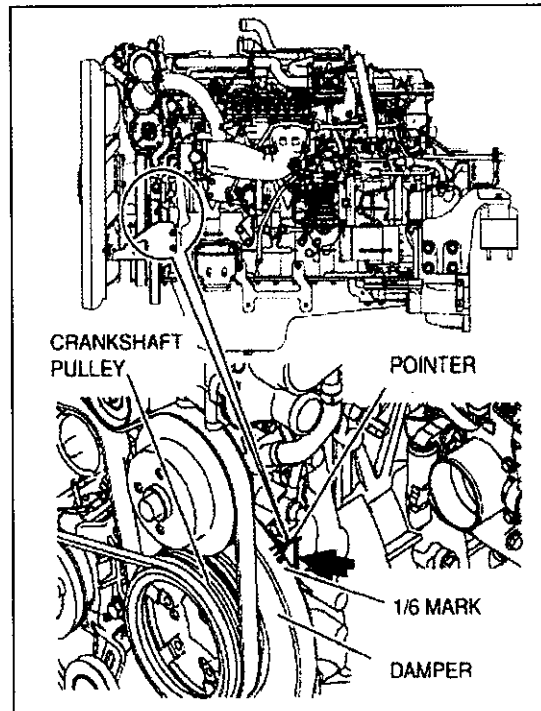
14. Install the new coupling onto the supply pump.



15. Replace the o-ring at the air compressor.



16. Confirm the 1/6 mark is at the pointer on the damper.



Safety Recall

17. Install the supply pump onto the air compressor using the four bolts removed in step 11.

Tighten each of the bolts to the specified torque.

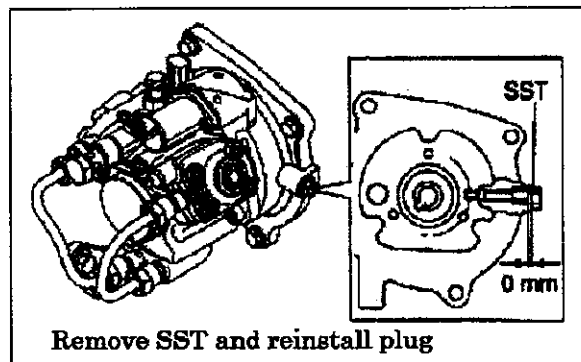
Specified Torque: 21 ft. lbs. (28.5 Nm).



18. Remove the guide bolt (SST# SZ10508067) and install the plug back into the side of the supply pump bearing holder.

Torque the plug to the specified torque.

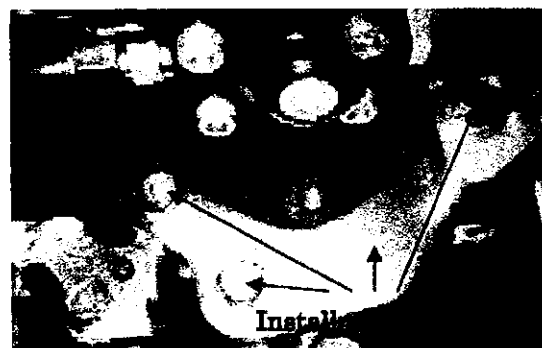
Specified Torque: 18 ft. lbs. (25 Nm).



19. Install the three bolts and bracket under the supply pump.

Tighten each of the bolts to the specified torque.

Specified Torque: 41 ft. lbs. (55 Nm).



20. Reconnect the outlet pipe flare nut to the rear of the supply pump.

Tighten the nut to specified torque.

Specified Torque: 32 ft. lbs. (44 Nm).



Safety Recall

21. Install the inlet tube banjo bolt into the rear of the supply pump with one new soft washer on each side of the tube end.

Tighten the banjo bolt to the specified torque.

Specified Torque: 18 ft. lbs. (25 Nm)



22. Install the return pipe banjo bolt into the top of the supply pump with one new soft washer on each side of the tube end.

Tighten the banjo bolt to the specified torque.

Specified Torque: 15 ft. lbs. (20 Nm).



23. Install the clamp onto the outlet pipe.

Tighten the nut to the specified torque.

Specified Torque: 4.3 ft. lbs. (6 Nm).



24. Connect the harness connector to the suction control valve.

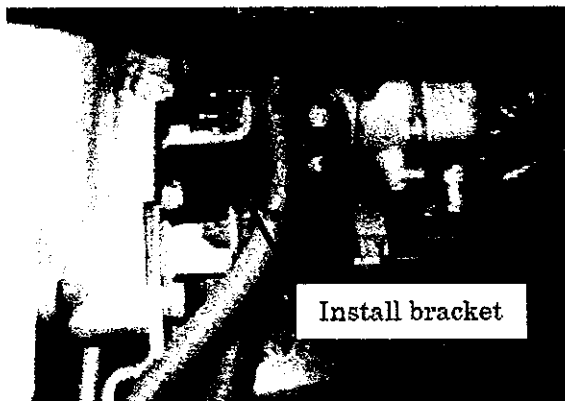


Safety Recall

25. Install the engine oil dipstick tube bracket.

Tighten each of the bolts to the specified torque.

Specified Torque: 7.2 ft. lbs. (10 Nm).

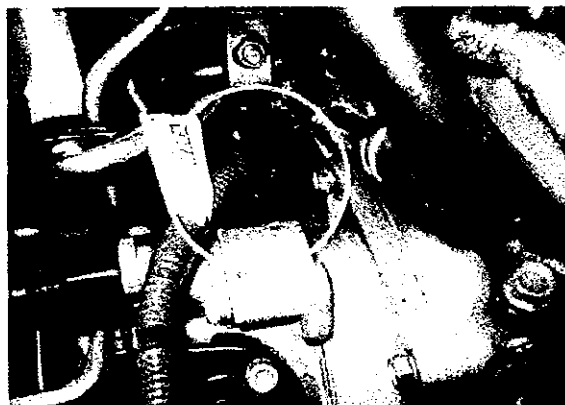


26. Install the clamp onto the engine oil dipstick tube stud. Mount the clamp onto the bracket and tighten the nut to the specified torque.

Specified Torque: 4.3 ft. lbs. (6 Nm).



27. Connect the harness connector to the fuel temperature sensor.

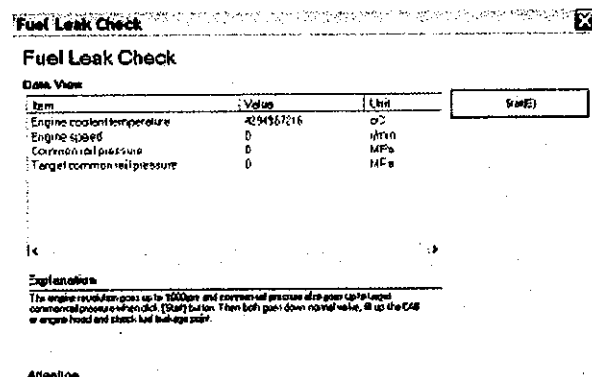
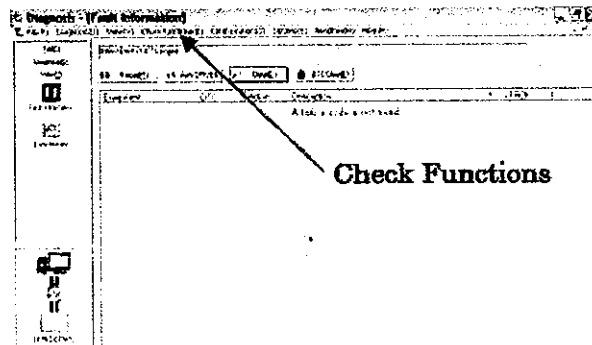


Safety Recall

28. Use the Hino Diagnostic Explorer function "Fuel Leak Check" to check the fuel system for leaks.

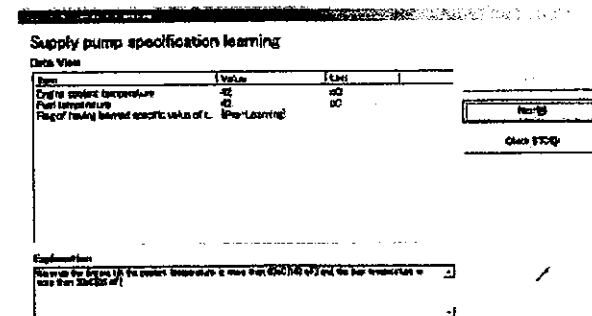
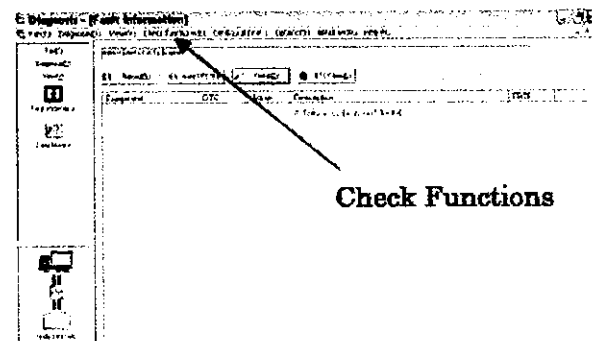
This feature is found under "Check Functions" heading inside Diagnostic Explorer.

Follow the instructions under the "Explanation" heading to complete the leak check.



29. Use the Hino Diagnostic Explorer to "relearn" the supply pump by completing the "Supply Pump Specification Learning" function.

This feature is found under "Check Functions" heading inside the Hino Diagnostic Explorer.





A Toyota Group Company

Safety Recall

Warranty Application Information:

Campaign Number: A6160
Time Allowance: 3.6 hours
Warranty Code: 0618498
Operation Code: 06150AOT
Original Part Number: S226101910