

# RNAV (GPS) RWY 9

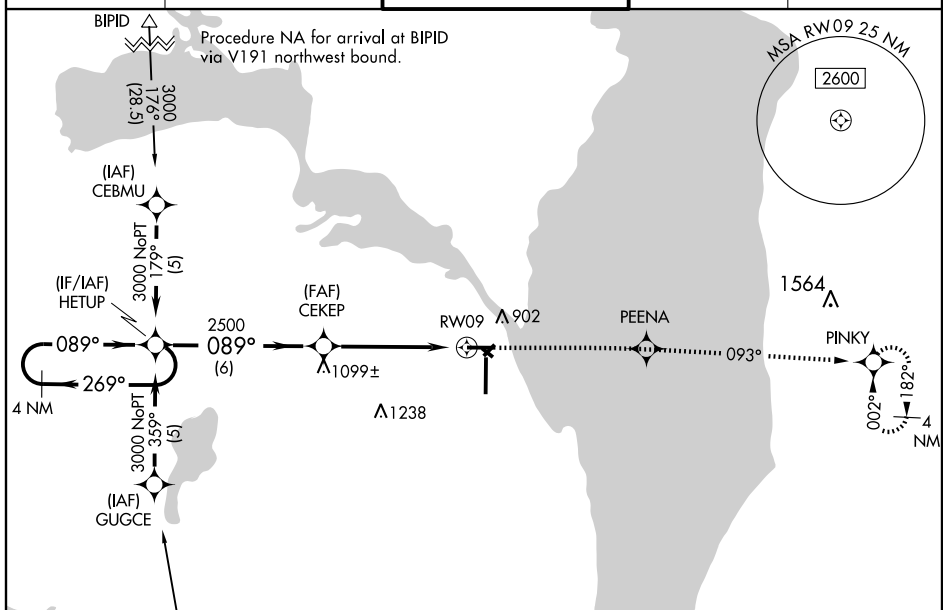
OSHKOSH/ WITTMAN RGNL (OSH)

APP CRS	Rwy Idg	<b>6178</b>
<b>089°</b>	TDZE	<b>797</b>
	Apt Elev	<b>808</b>

**⚠** When local altimeter setting not received, use Fond Du Lac County altimeter setting and increase all MDA 40 feet, increase S-9 visibility Cat. C and Cat. D ¼ mile and circling Cat. C ¼ mile. VDP NA when using Fond Du Lac County altimeter setting. DME/DME RNP-0.3 NA.

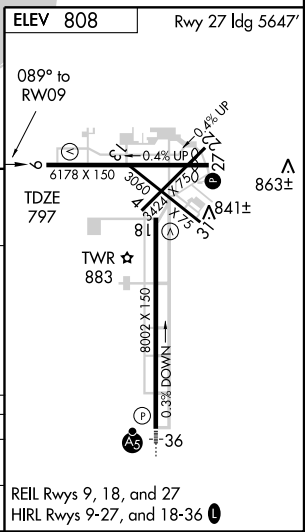
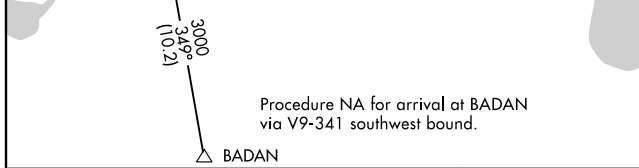
**MISSED APPROACH:** Climb to 3000 direct PEENA and right turn via 093° track to PINKY and hold.

ATIS <b>125.9</b>	MILWAUKEE APP CON <b>127.0 263.075</b>	OSHKOSH TOWER ★ <b>118.5(CTAF) 257.6</b>	GND CON <b>121.9</b>	UNICOM <b>122.95</b>
----------------------	---	---	-------------------------	-------------------------



EC-3, 09 APR 2009 to 07 MAY 2009

EC-3, 09 APR 2009 to 07 MAY 2009



CATEGORY	A	B	C	D
LNVA MDA	1360-1	563 (600-1)	1360-1½ 563 (600-1½)	1360-1¾ 563 (600-1¾)
CIRCLING	1360-1	552 (600-1)	1360-1½ 552 (600-1½)	1360-2 552 (600-2)