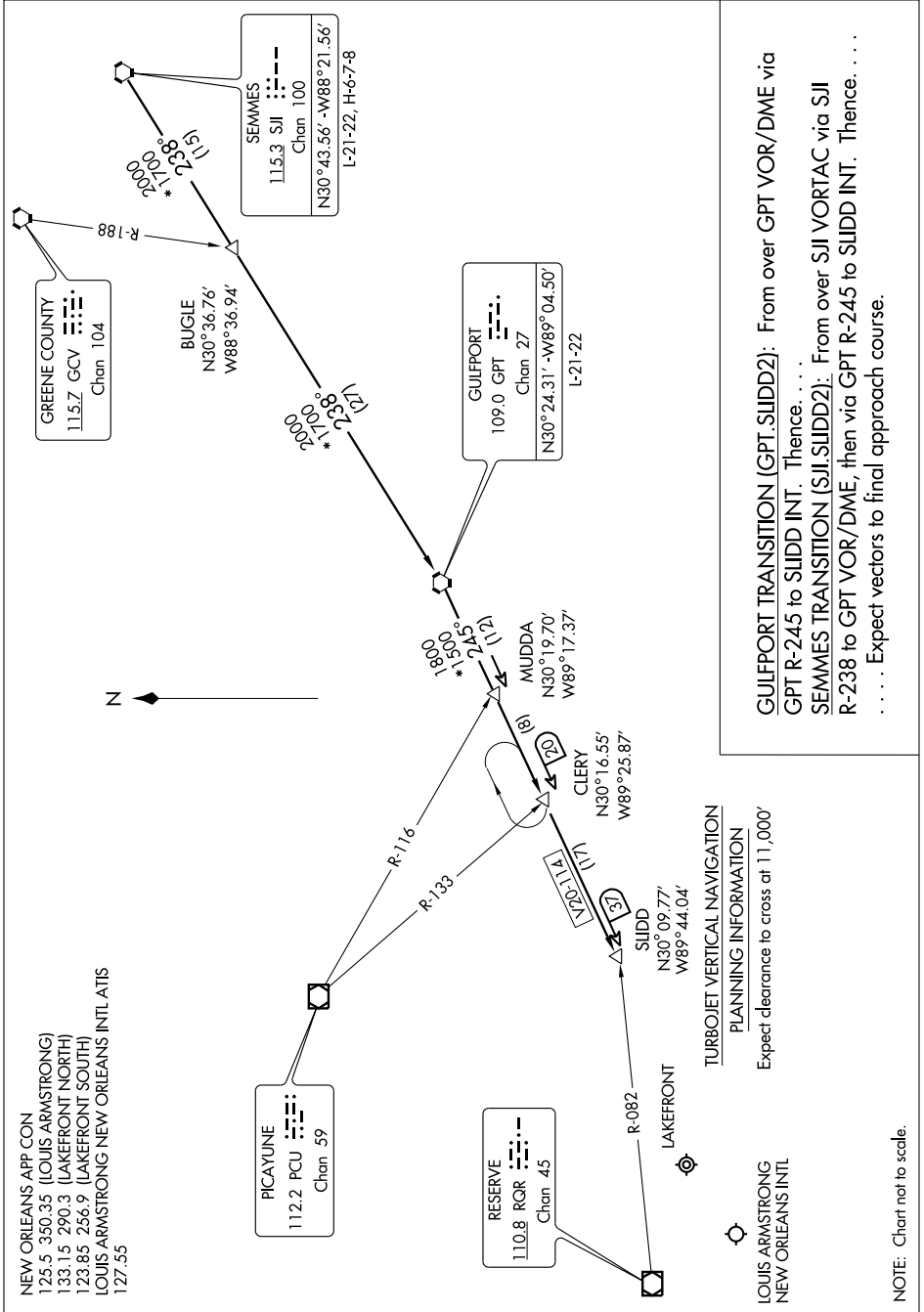


# SLIDD TWO ARRIVAL

ST-609 (FAA)

NEW ORLEANS, LOUISIANA

SC-4, 12 MAR 2009 to 09 APR 2009



**GULFPORT TRANSITION (GPT.SLIDD2):** From over GPT VOR/DME via GPT R-245 to SLIDD INT. Thence. . . .

**SEMMES TRANSITION (SJI.SLIDD2):** From over SJI VORTAC via SJI R-238 to GPT VOR/DME, then via GPT R-245 to SLIDD INT. Thence. . . .

. . . . Expect vectors to final approach course.