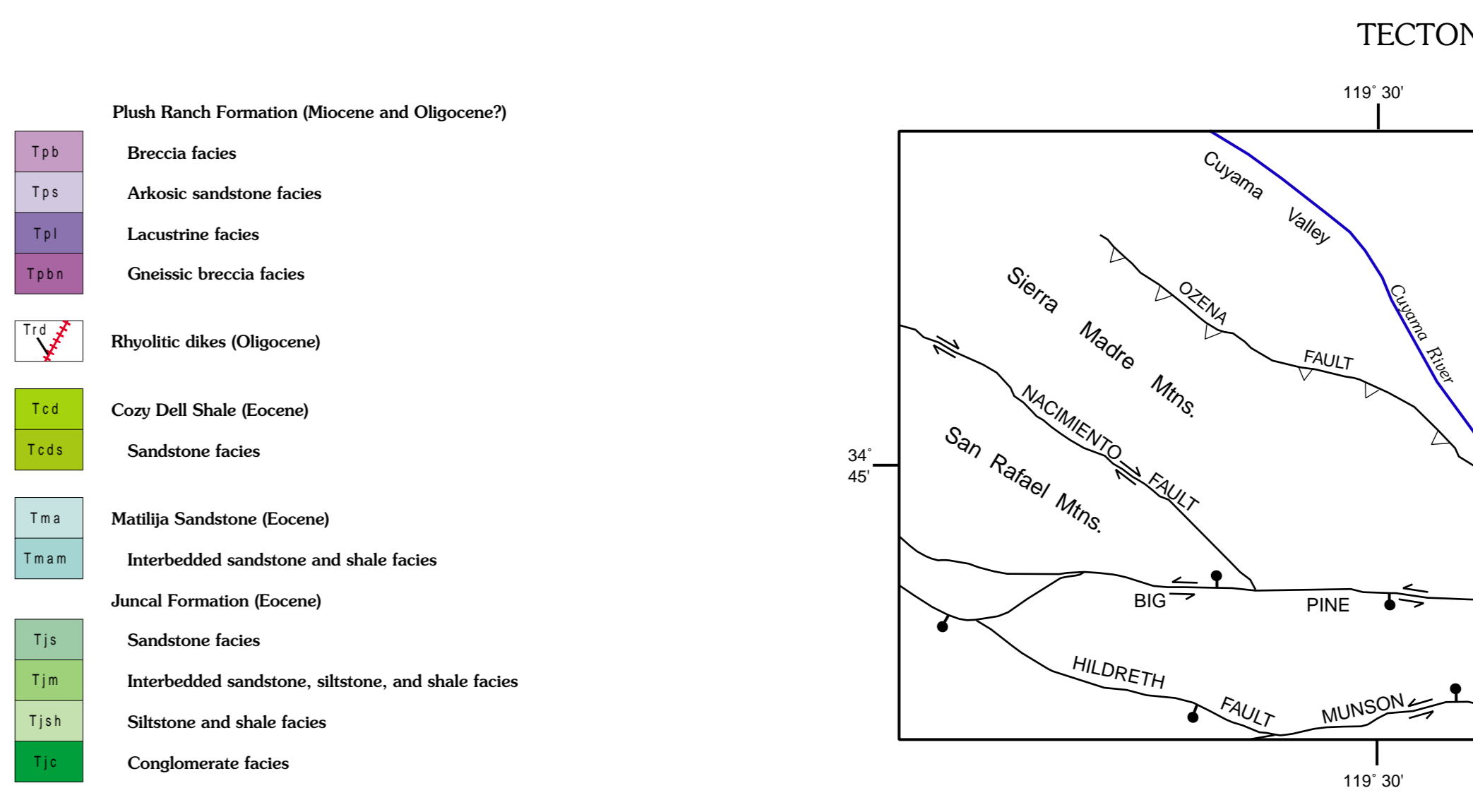
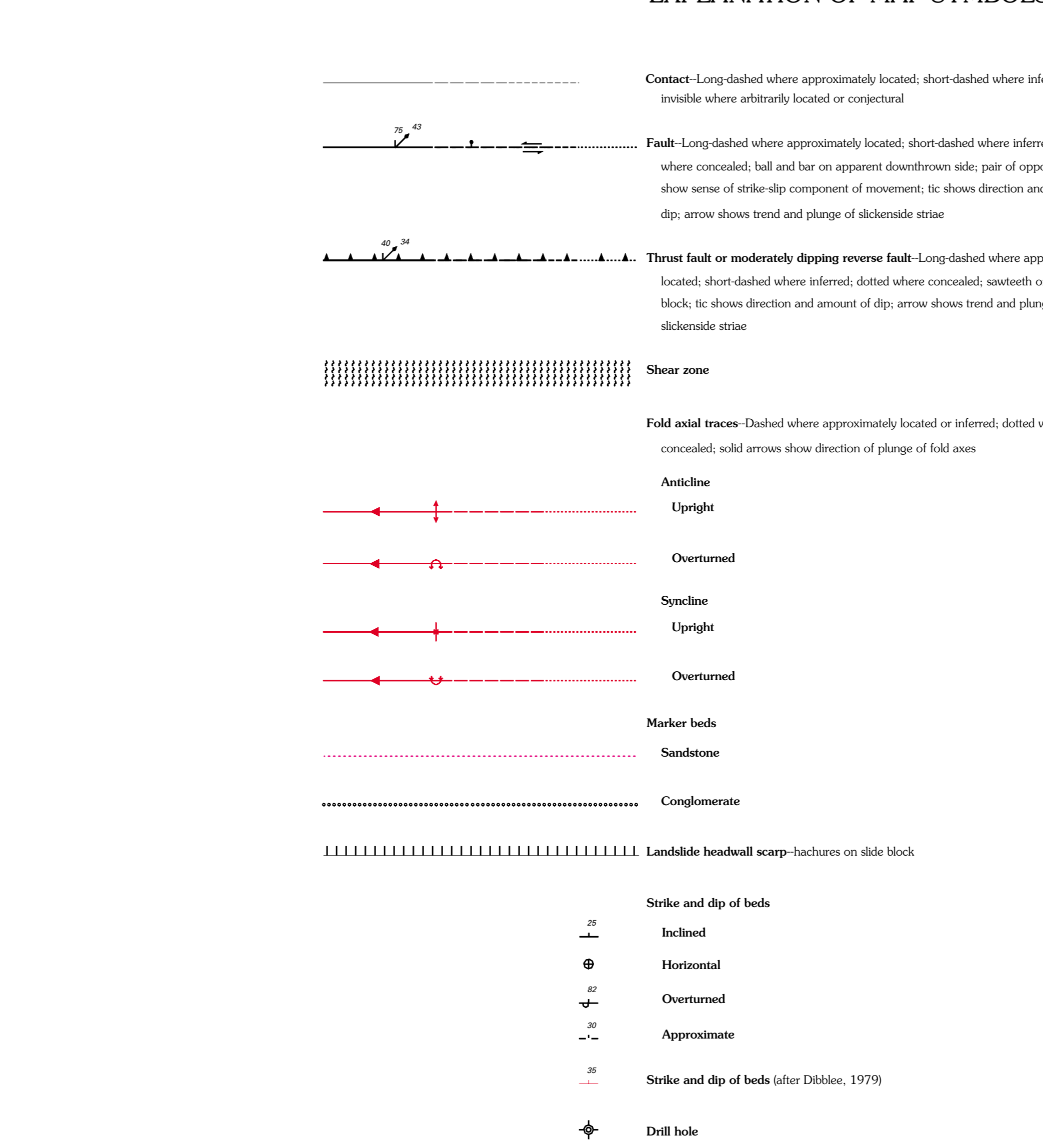
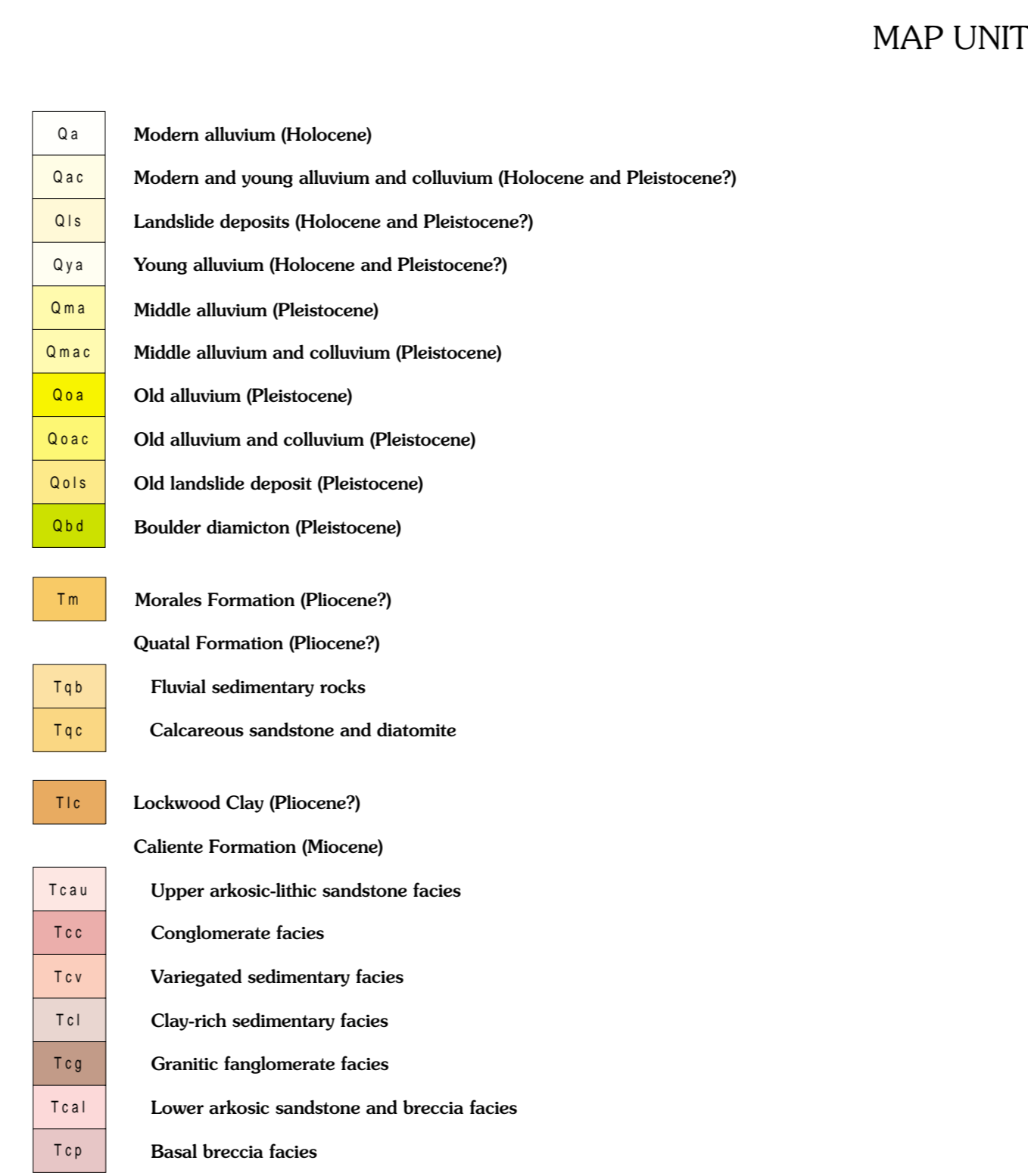
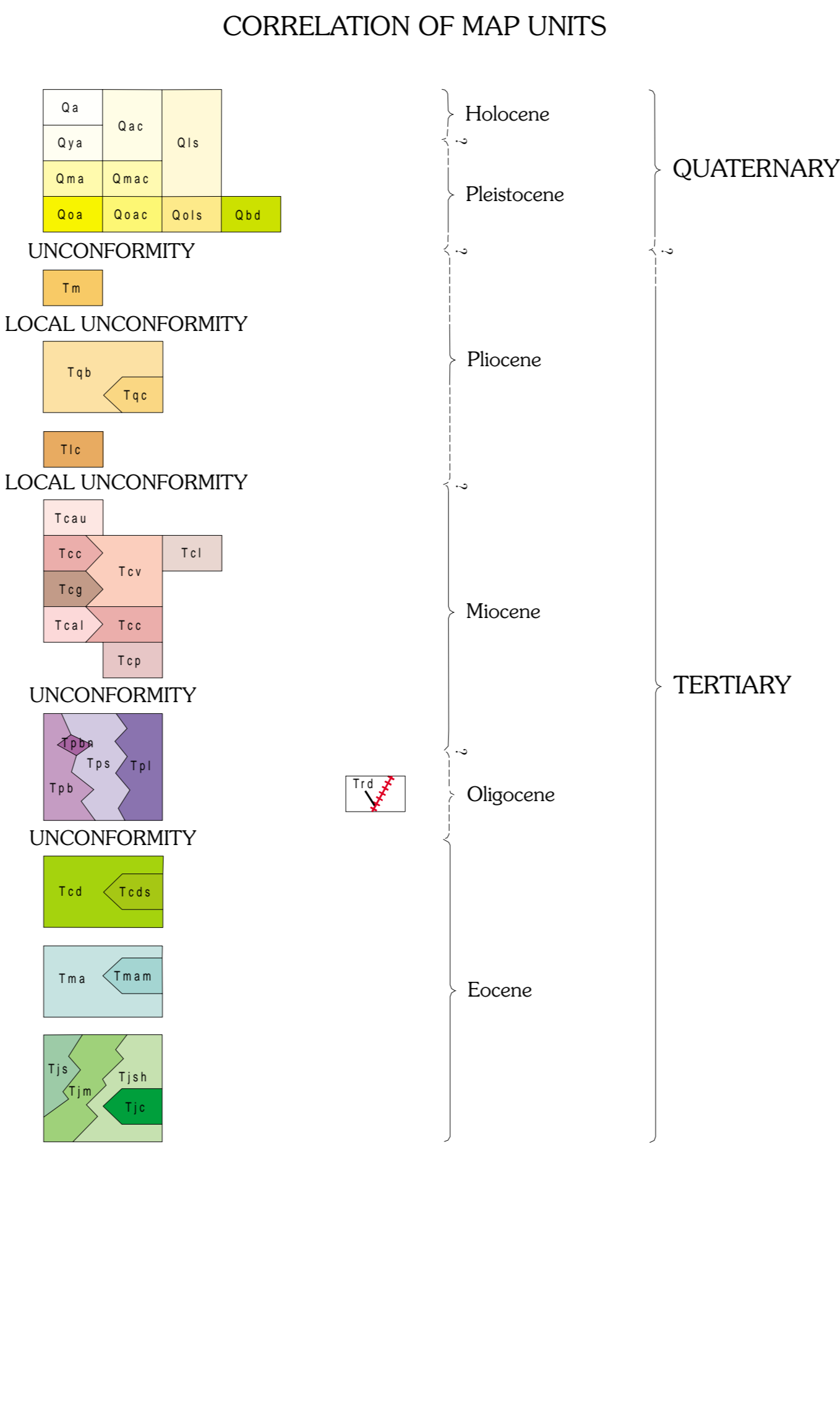


This map is preliminary and has not been reviewed for conformity with U.S. Geological Survey editorial standards or with the North American Stratigraphic Code. Projection and 10 000-foot grid ticks. California Coordinate System, zone 5 (Lambert Conformal Conic, 1000-meter Universal Transverse Mercator grid, zone 11).  
 SCALE 1:24,000  
 CONTOUR INTERVAL 40 FEET  
 NATIONAL GEODETIC VERTICAL DATUM OF 1929  
 Geology mapped by S.A. Minor 1996-1998. Digital compilation by S.A. Minor, O. Young, and T. Brandt.



PRELIMINARY GEOLOGIC MAP OF THE SAN GUILLERMO MOUNTAIN QUADRANGLE, VENTURA COUNTY, CALIFORNIA  
 By  
 Scott A. Minor  
 Version 1.0  
 1999

