

"Norm"-Values by HET
(White Leghorn, Lohmann Selected Leghorn LSL)

| Parameter | Dimension | N | Mean | s.d. | s.e. |
|------------------|-----------|-----|------|------|------|
| Hatching weight | g | 416 | 41.7 | 3.6 | 0.2 |
| Humerus | mm | 416 | 17.2 | 1.2 | 0.1 |
| Ulna | mm | 416 | 17.0 | 1.2 | 0.1 |
| Femur | mm | 416 | 22.5 | 1.4 | 0.1 |
| Tibia | mm | 416 | 33.2 | 1.6 | 0.1 |
| Metatarsus | mm | 416 | 25.5 | 1.6 | 0.1 |
| Skull thickness | mm | 416 | 13.1 | 0.3 | - |
| Liver (abs.) | g | 416 | 0.83 | 0.11 | 0.01 |
| Liver (rel.) | g/100g bw | 416 | 1.98 | 0.27 | 0.01 |
| Heart (abs.) | g | 416 | 0.26 | 0.04 | - |
| Heart (rel.) | g/100g bw | 416 | 0.62 | 0.11 | 0.01 |
| Sodium | mmol/l | 130 | 136 | 7.5 | 0.7 |
| Calcium | mmol/l | 140 | 2.54 | 0.23 | 0.02 |
| Chloride | mmol/l | 131 | 106 | 9 | 0.8 |
| Inorg. Phosphate | mg/dl | 136 | 5.0 | 1.4 | 0.1 |
| total Protein | g/dl | 140 | 1.8 | 0.4 | - |
| Creatinine | mg/dl | 140 | 0.4 | 0.1 | - |
| Glucose | mg/dl | 132 | 246 | 25 | 2 |
| Uric acid | mg/dl | 135 | 5.7 | 1.9 | 0.2 |
| Cholesterol | mg/dl | 135 | 377 | 60 | 5 |
| Triglycerides | mg/dl | 140 | 97 | 37 | 3 |
| GOT | U/l | 123 | 96 | 24 | 2 |
| GPT | U/l | 102 | 12.1 | 16.2 | 1.6 |
| LDH | U/l | 135 | 959 | 264 | 23 |
| AP | U/l | 134 | 1604 | 638 | 55 |

TABLE IV

Norm-Values by HET
(White Leghorn, Shaver Starcross 288 A)

| Parameter | Dimension | N | Mean | s.c. | s.e. |
|------------------|-----------|-----|------|------|------|
| Hatching weight | g | 457 | 41.3 | 1.4 | 0.1 |
| Humerus | mm | 457 | 17.8 | 1.1 | 0.1 |
| Ulna | mm | 457 | 16.7 | 1.2 | 0.1 |
| Femur | mm | 457 | 24.5 | 1.3 | 0.1 |
| Tibia | mm | 457 | 34.1 | 1.3 | 0.1 |
| Metatarsus | mm | 457 | 25.3 | 1.1 | 0.1 |
| Skull thickness | mm | 457 | 13.2 | 0.2 | - |
| Liver (abs.) | g | 457 | 0.83 | 0.09 | - |
| Liver (rel.) | g/100g bw | 457 | 2.00 | 0.23 | 0.01 |
| Heart (abs.) | g | 457 | 0.25 | 0.02 | - |
| Heart (rel.) | g/100g bw | 457 | 0.61 | 0.06 | - |
| Sodium | mmol/l | 165 | 132 | 6 | 0.5 |
| Calcium | mmol/l | 167 | 2.41 | 0.12 | 0.01 |
| Chloride | mmol/l | 168 | 104 | 5 | 0.4 |
| inorg. Phosphate | mg/dl | 165 | 4.5 | 0.9 | 0.1 |
| total Protein | g/dl | 169 | 1.9 | 0.4 | - |
| Creatinine | mg/dl | 166 | 0.4 | 0.1 | - |
| Glucose | mg/dl | 169 | 219 | 15 | 1 |
| Uric acid | mg/dl | 167 | 4.4 | 1.4 | 0.1 |
| Cholesterol | mg/dl | 151 | 364 | 54 | 4 |
| Triglycerides | mg/dl | 167 | 81 | 22 | 2 |
| GOT | U/l | 166 | 91 | 16 | 1 |
| GPT | U/l | 155 | 6.5 | 5.9 | 0.5 |
| LDH | U/l | 104 | 917 | 240 | 24 |
| AP | U/l | 167 | 4273 | 933 | 72 |

TABLE V

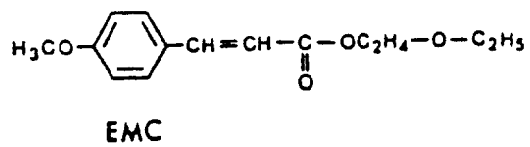
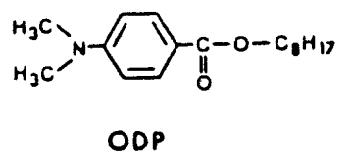
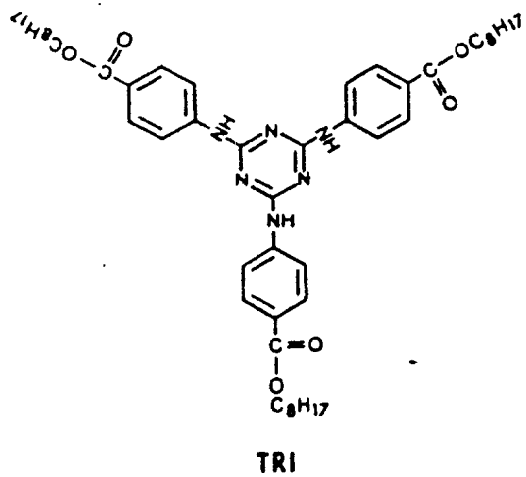


FIGURE 1

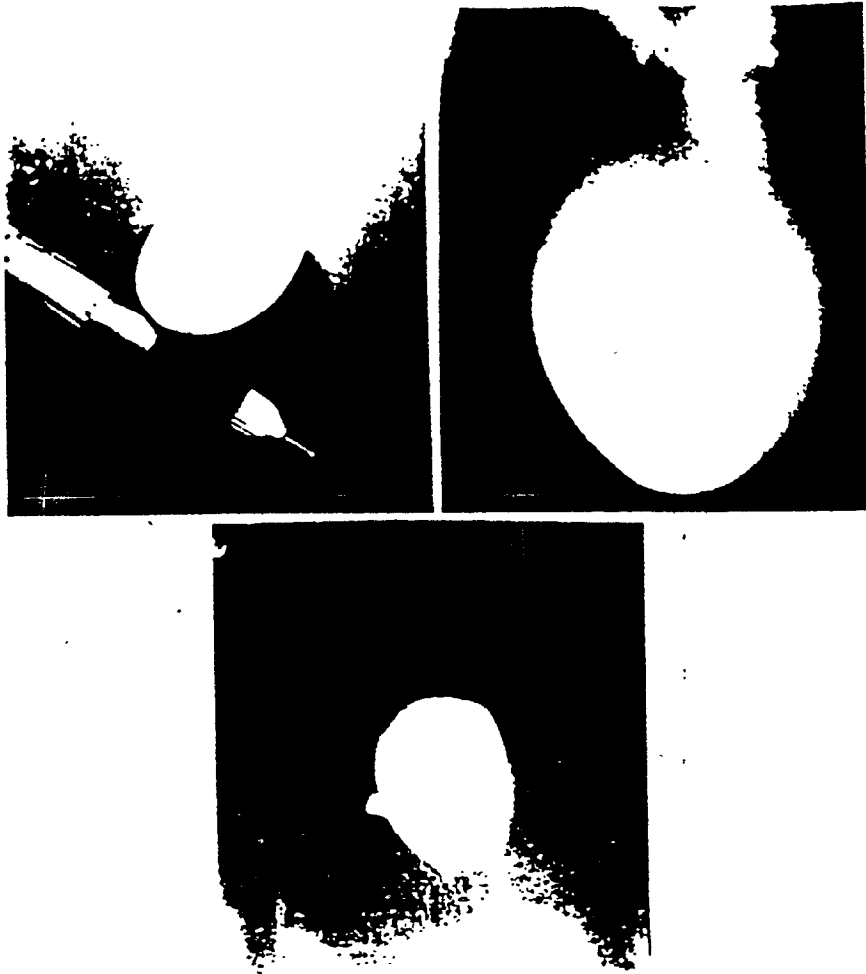


FIGURE 2



1a



1b



1c



1d

FIGURE 3a

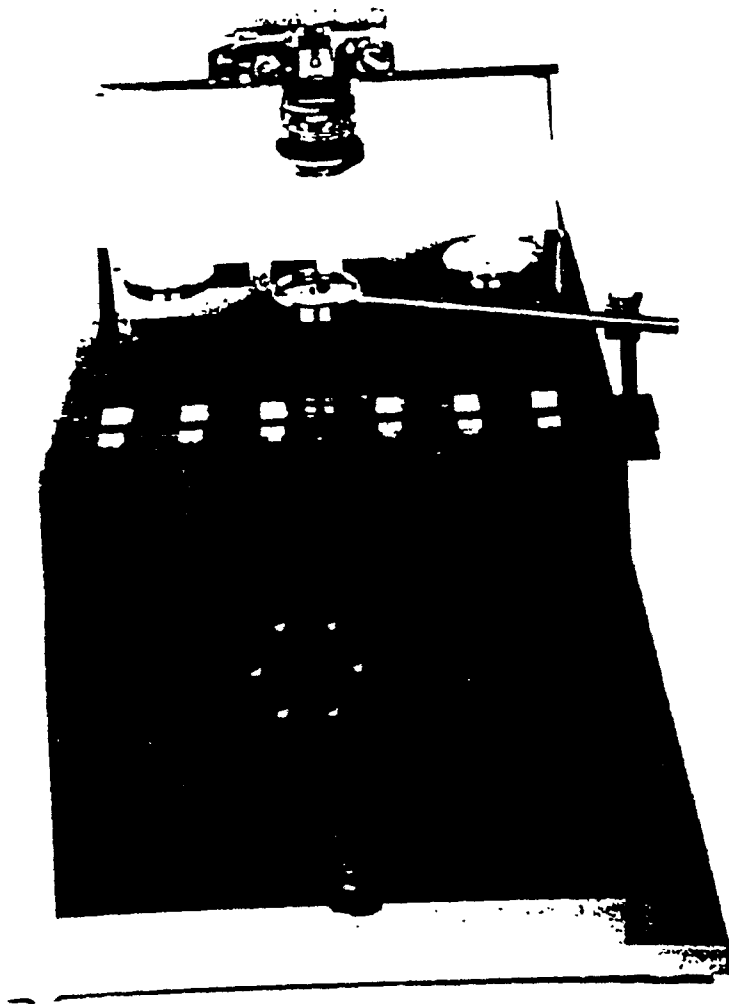


FIGURE 3b



FIGURE 4

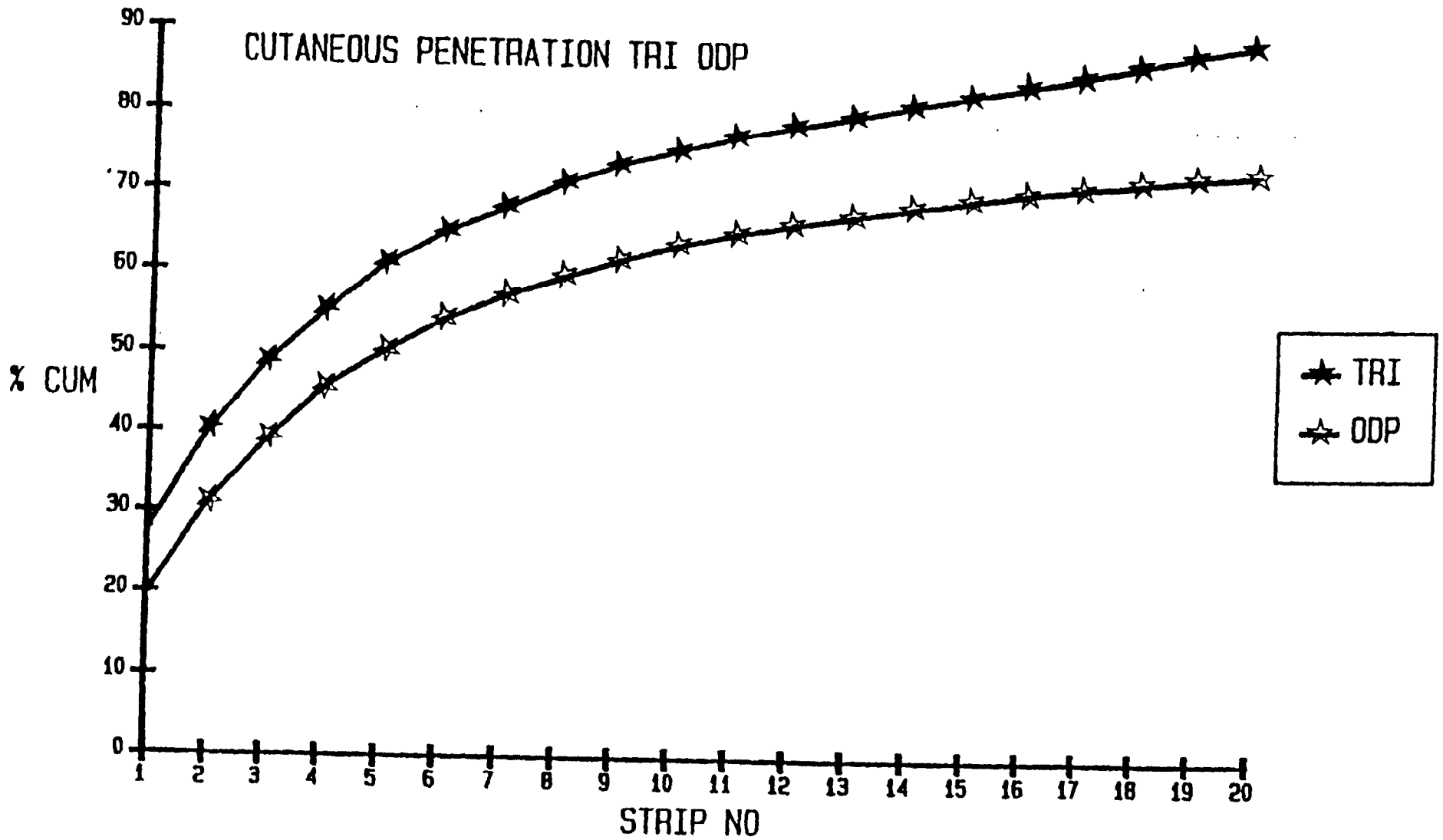


FIGURE 5

U.V. FILTERS - MATRIX

| COLIPA n° | EEC n° | CHEMICAL NAME | Acute Tox. | Skin irr. | MM | Sens. | Short Term | Long Term + carcino | Genotox | PhotoI | PhotoS | Absorp | Others | Remarks |
|-----------|--------|---|------------|-----------|-----|-------|-------------------------------|---------------------|--------------------------------------|--------|-----------|--------|-----------------------|--------------------------------|
| S 42 | 2.18 | 2-Ethylhexyl-4'-phenylbenzophenone-2-carboxylate | o/i.p/d | a | x | a | | | | a | a | | | |
| S 47 | 2.19 | 5-Methyl-2-phenylbenzoxazole | o | a (h) | x | (a) | 90-d o. | | | a | a | | | IKW - DS |
| S 50 | 2.20 | Sodium 3,4-dimethoxyphenyl-glyoxylate | o/i.p/d | a | x | a | | | | a | a | | | IKW - DS |
| S 56 | 2.22 | 5-(3,3-Dimethyl-8,9,10-trinorborn-2-ylidene) pent-3-en-2-one | o | h | x | a | | | | a | a (h) | | | IKW - DS |
| S 59 | | 3-(4-Methylbenzylidene) bornan-2-one | o | x | x | | in progr. | | in progr | x | in progr. | | | |
| S 60 | 2.25 | 3-(4-Methylbenzylidene) bornan-2-one | o/i.p/d | a h | x | a h | | | - Ames | a h | a h | h | | IKW - partial DS |
| S 61 | 2.26 | 3-Benzylidenebornan-2-one | o | a | x | a | 90-d o. | | | a | a | | | |
| S 62 | 2.27 | alpha-Cyano-4-methoxy-cinnamic acid and its hexyl esters | o | a h | x | a | | | | a | | | | IKW - DS prop. for deletion |
| S 64 | 2.28 | 1-(4'-Isopropylphenyl)-3-phenylpropane-1,3-dione mixture : S 60 + S 64 | o/i.p/d | a h | x | a h | 90-d o. | | - Ames | a h | | h | | IKW - partial DS IKW - DS |
| S 66 | 2.31 | 1-(4-tert-Butylphenyl)-propane-1,3-dione | o/i.p/d | a h | x | a h | 21-d d. 28-d d. 90-d o. | | -Ames -Micron -CHO -Sac.ser | a | a h | a h | Embryo-tox. + terato. | IKW - DS |
| S 68 | - | 3-Phenyl-N-(4'-sulpho-phenyl)-2-propenamide | (o) | (a) | (x) | (a) | | | | (a) | (a) | | | IKW - DS |
| S 69 | - | 2,4,6-Trianiilino-(p-carbo-2-ethylhexyl-1-oxi)-1,3,5-triazine | o | a (h) | x | a (h) | 90 d = progr. | | Genotox | | a | | | |

| | | | |
|-----|-------------------|-----|---|
| o | : oral | h | : in humans |
| i.p | : intraperitoneal | MM | : mucous membranes irritation |
| d | : dermal | () | : only summary available (no full report) |
| a | : in animals | DS | : Data Sheet |

Handwritten notes:
 c: K. Kugel / BAF
 Am. 3 6.86 / 1/2

19/11

U.V. FILTERS - MATRIX

| COLIPA n° | EEC n° | CHEMICAL NAME | Acute Tox. | Skin irr. | KM | Sens. | Short Term | Long Term + carcino | Genotox | PhotoT | PhotoS | Absorp | Others | Remarks |
|-----------|--------|--|---------------------------|------------|-----|------------|---------------------|------------------------|---|------------|------------|--------|-------------------------|-------------|
| S 2 | 2.1 | 2-Ethyl-4-bis(hydroxypropyl) aminobenzoate, mixed isomers | o/i.p | a h | x | h | 21-d d. (h) | | - Ames | h | | | | |
| S 3 | 2.2 | Ethoxylated-4-amino-benzoic acid | d (o) (i.p) (inhal) | a (h) | (x) | (a) | | | Ames | h | a | | Terato. | |
| S 6 | 2.4 | Glycerol 1-(4-amino-benzoate) | o | a h | x | a h | 90-d d. | | | | a | | | |
| S 8 | 2.5 | 2-Ethylhexyl 4-dimethyl-aminobenzoate | o | a h | x | a h | 4-wk d. | | - Ames | h | ? | h | Terato.d | |
| S 9 | 2.11 | Salicylic acid salts (potassium, sodium and triethanolamine salts) | o | a h | x | h | | | | | a (1) | | | (1) mixture |
| S 13 | 2.6 | 2-Ethylhexyl salicylate | o | h | x | h | 90-d d. | | - Ames | h | h | | | |
| S 16 | 2.29 | 4-Isopropylbenzylsalicylate | o/i.p | a | x | | 15-wk o. | 6-mth d.+ carcino.d | | | | | Terato + Embryot. | |
| S 19 | 2.8 | Potassium cinnamate | o/d | a h | x | h | | | | | a (1) | | Embryot. | (1) mixture |
| S 24 | 2.9 | 4-Methoxycinnamic acid salts (potassium, sodium and diethanolamine salts) | o/d | a h | x | h | | | | | a (1) h | | | (1) mixture |
| S 25 | 2.10 | Propyl 4-methoxycinnamate | o/d | a h | x | a h | | | | | a (1) h | | | (1) mixture |
| S 27 | 2.12 | Amyl 4-methoxycinnamate mixed isomers | o | (a) (h) | (x) | (a) (h) | 90-d in progress | | Ames | | | | | IKW - OS |
| S 28 | 2.13 | 2-Ethylhexyl-4-methoxy-cinnamate | o/(d) | a h | x | (a) h | 90-d o. 90-d d. | | -Ames -Chrom. anal. -Droso. -CHO -Micron -Sac.ser | (a) (h) | (a) (h) | a h | Embryot- + Terato | |
| S 29 | 2.14 | Cinoxate (INN) | o | h | x | h | 90-d d. | | - Ames | h | h | | | |
| S 39 | 2.16 | 2-Hydroxy-4-methoxy-4'-methyl-benzophenone (mexenone) | o | h a | x | h | | | - Ames - CHO | | a | | | |
| S 40 | 2.17 | 2-Hydroxy-4-methoxybenzophenone-5-sulphonic acid and sodium salts (Sulisobenzone and sulisobenzone sodium) | o | h | x | h | | | - Ames | Li+ | | | | |