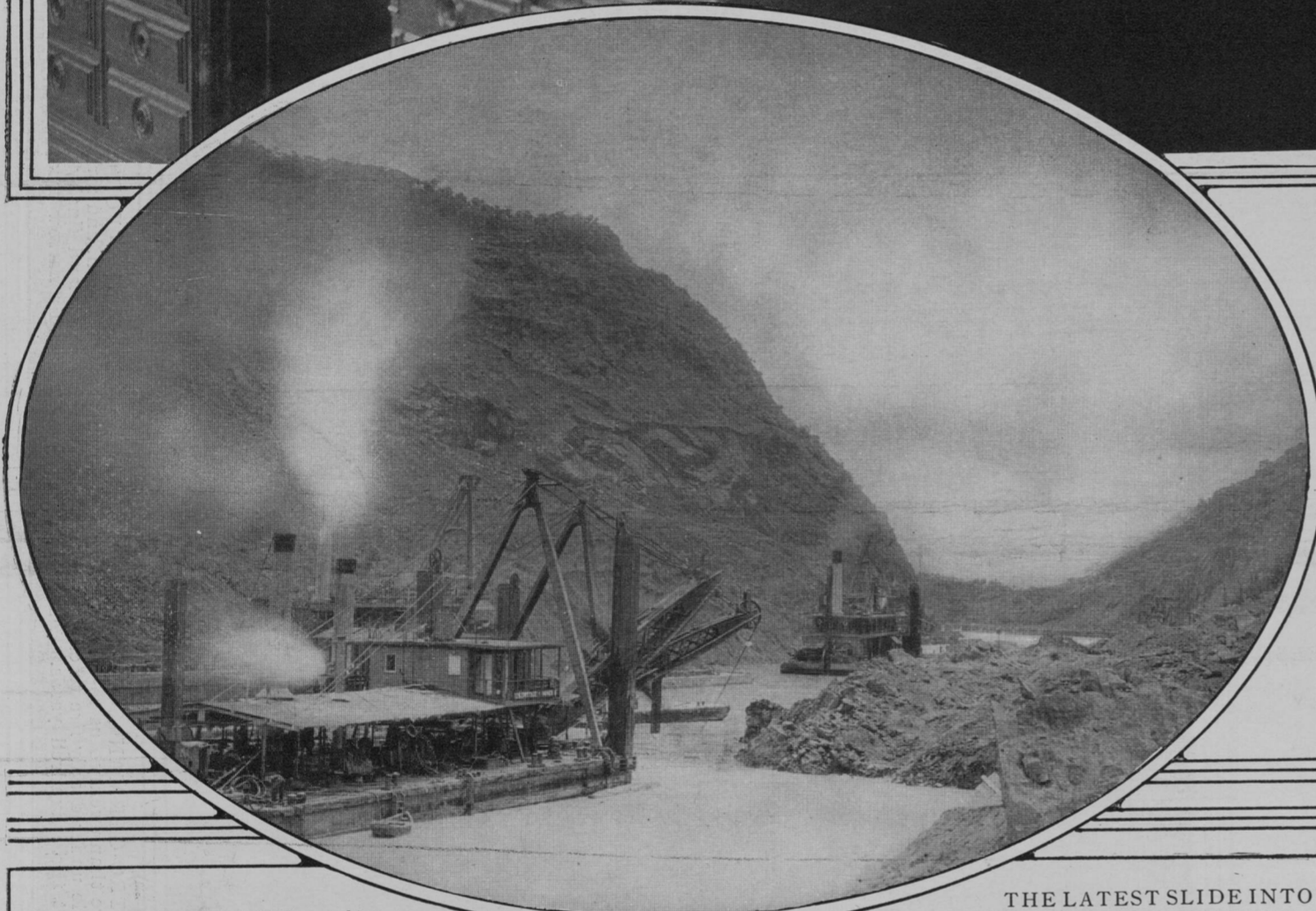




FIRST MEETING OF THE NEW NAVAL ADVISORY BOARD, ASSEMBLED BY SECRETARY DANIELS FROM AMONG THE MOST NOTABLE SCIENTISTS IN THE COUNTRY.

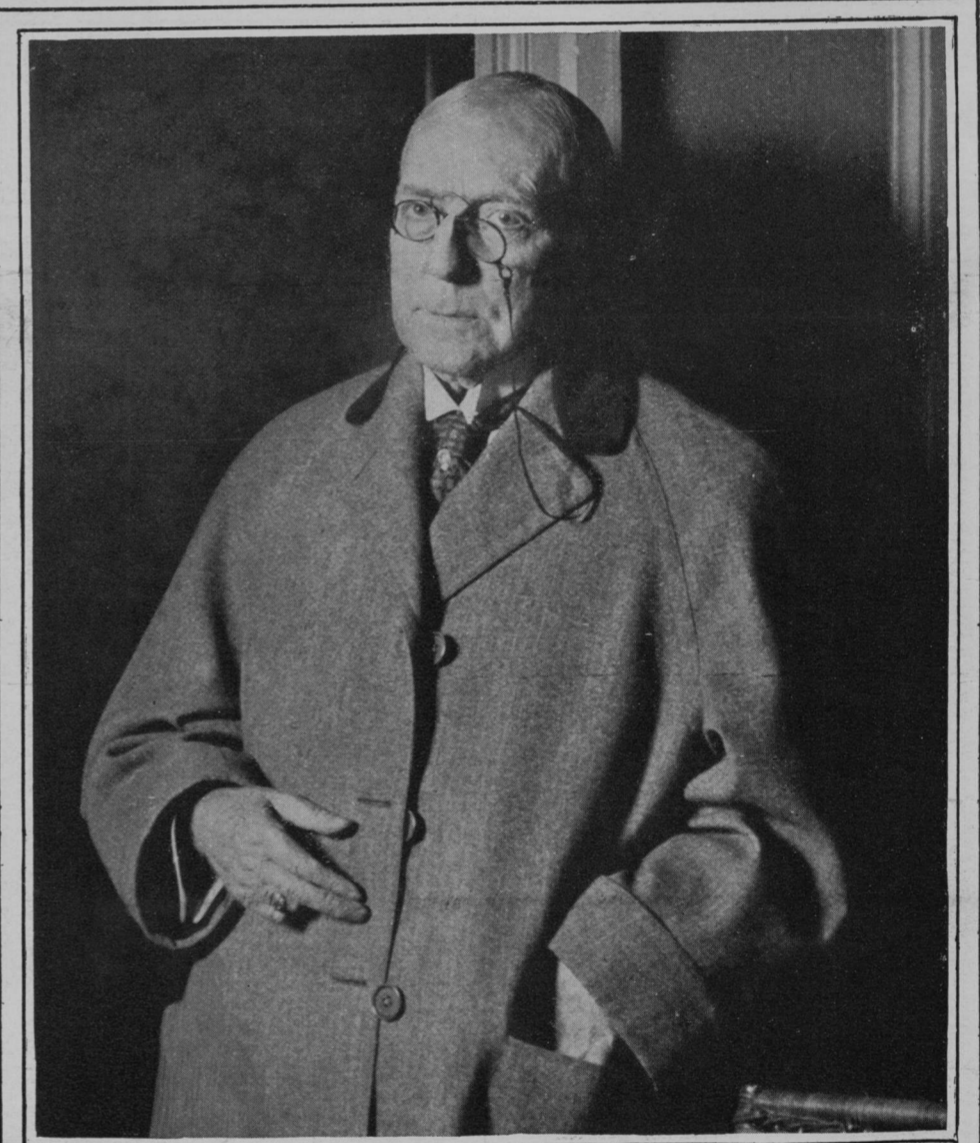
In the group, photographed in the office of the Secretary of the Navy, are Thomas A. Edison, Chairman; W. R. Whitney, Arthur G. Webster, A. M. Hunt, Alfred Cravan, Spencer Miller, Wm. Le Roy Emmett, Matthew B. Sellers, Hudson Maxim, Peter C. Hewitt, Thomas Robins, Howard E. Coffin, Andrew L. Riker, Henry A. Wise Wood, Elmer A. Sperry, William L. Saunders, Benjamin B. Thayer, J. W. Richards, and Lawrence Addicks.

(Photos © American Press Assn.)



THE LATEST SLIDE INTO THE PANAMA CANAL WHICH, EXPERTS SAY, MAY TAKE MONTHS TO REMOVE.

(Photo by Underwood & Underwood.)



JAMES WHITCOMB RILEY.
From a Photograph Taken at the Murat Theatre, Indianapolis, on "Riley Day," When All Indiana Took Holiday in Honor of the Poet's Birthday.



Queen Mary of England Standing Before a Relic of Nelson in the New Building of the British and Foreign Sailors Society at Millwall, Just Opened by Her Majesty.



THE FUNERAL PROCESSION OF THE FAMOUS JAPANESE ADMIRAL, MARQUIS INOUE, PASSING THROUGH THE STREETS OF TOKIO.

(Photo by Paul Thompson.)