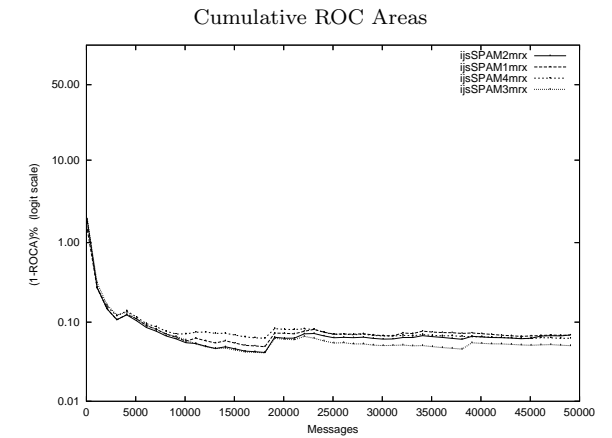
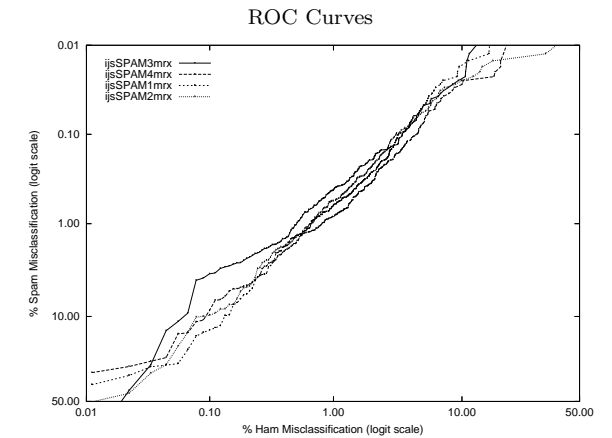


ijs - Jozef Stefan Inst. on Private Mr X. Corpus

Gold Std. Filter Classification	ijsSPAM1mrx		ijsSPAM2mrx		ijsSPAM3mrx		ijsSPAM4mrx	
	ham spam	ham spam	ham spam	ham spam	ham spam	ham spam	ham spam	ham spam
Ham Misc%	1.54 (1.29-1.81)		1.52 (1.27-1.79)		1.33 (1.10-1.59)		1.44 (1.20-1.71)	
Spam Misc%	0.39 (0.33-0.45)		0.34 (0.28-0.40)		0.33 (0.28-0.39)		0.54 (0.47-0.61)	
Logit av Misc%	0.77 (0.69-0.87)		0.72 (0.64-0.81)		0.66 (0.59-0.75)		0.88 (0.79-0.98)	
(1-ROCA)%	0.069 (0.046 - 0.102)		0.069 (0.044 - 0.107)		0.050 (0.028 - 0.091)		0.063 (0.045 - 0.087)	
Ham Misc%	Spam Misc%							
0.01	92.84 (38.97 - 99.62)	94.42 (50.14 - 99.65)	86.21 (47.00 - 97.78)	80.43 (32.56 - 97.22)	92.84 (38.97 - 99.62)	94.42 (50.14 - 99.65)	86.21 (47.00 - 97.78)	80.43 (32.56 - 97.22)
0.02	39.32 (3.67 - 91.67)	50.26 (5.47 - 94.64)	74.51 (17.55 - 97.57)	32.16 (6.25 - 77.12)	39.32 (3.67 - 91.67)	50.26 (5.47 - 94.64)	74.51 (17.55 - 97.57)	32.16 (6.25 - 77.12)
0.05	28.07 (16.12 - 44.22)	27.90 (6.91 - 66.87)	13.80 (1.60 - 61.22)	24.33 (11.44 - 44.45)	28.07 (16.12 - 44.22)	27.90 (6.91 - 66.87)	13.80 (1.60 - 61.22)	24.33 (11.44 - 44.45)
0.10	13.63 (6.48 - 26.44)	9.72 (4.44 - 19.96)	3.56 (1.19 - 10.11)	8.68 (4.04 - 17.67)	13.63 (6.48 - 26.44)	9.72 (4.44 - 19.96)	3.56 (1.19 - 10.11)	8.68 (4.04 - 17.67)
0.20	5.87 (2.95 - 11.34)	4.95 (2.57 - 9.33)	2.42 (1.74 - 3.36)	4.75 (3.12 - 7.16)	5.87 (2.95 - 11.34)	4.95 (2.57 - 9.33)	2.42 (1.74 - 3.36)	4.75 (3.12 - 7.16)
0.50	1.37 (0.98 - 1.91)	1.41 (1.04 - 1.91)	1.03 (0.62 - 1.70)	1.65 (1.17 - 2.32)	1.37 (0.98 - 1.91)	1.41 (1.04 - 1.91)	1.03 (0.62 - 1.70)	1.65 (1.17 - 2.32)
1.00	0.63 (0.49 - 0.81)	0.56 (0.44 - 0.71)	0.42 (0.33 - 0.53)	0.83 (0.67 - 1.03)	0.63 (0.49 - 0.81)	0.56 (0.44 - 0.71)	0.42 (0.33 - 0.53)	0.83 (0.67 - 1.03)
2.00	0.28 (0.21 - 0.36)	0.24 (0.17 - 0.33)	0.19 (0.15 - 0.25)	0.35 (0.26 - 0.49)	0.28 (0.21 - 0.36)	0.24 (0.17 - 0.33)	0.19 (0.15 - 0.25)	0.35 (0.26 - 0.49)
5.00	0.05 (0.03 - 0.09)	0.06 (0.04 - 0.09)	0.05 (0.03 - 0.08)	0.08 (0.05 - 0.13)	0.05 (0.03 - 0.09)	0.06 (0.04 - 0.09)	0.05 (0.03 - 0.08)	0.08 (0.05 - 0.13)
10.00	0.02 (0.01 - 0.04)	0.02 (0.01 - 0.05)	0.02 (0.01 - 0.05)	0.03 (0.01 - 0.06)	0.02 (0.01 - 0.04)	0.02 (0.01 - 0.05)	0.02 (0.01 - 0.05)	0.03 (0.01 - 0.06)
20.00	0.01 (0.00 - 0.03)	0.01 (0.01 - 0.04)	0.00 (0.00 - 0.01)	0.01 (0.00 - 0.04)	0.01 (0.00 - 0.03)	0.01 (0.01 - 0.04)	0.00 (0.00 - 0.01)	0.01 (0.00 - 0.04)
50.00	0.00 (0.00 - 0.01)	0.01 (0.00 - 0.03)	0.00 (0.00 - 0.00)	0.00 (0.00 - 0.00)	0.00 (0.00 - 0.01)	0.01 (0.00 - 0.03)	0.00 (0.00 - 0.00)	0.00 (0.00 - 0.00)
Spam Misc%	Ham Misc%							
0.01	15.68 (4.30 - 43.49)	39.37 (9.43 - 80.19)	12.69 (9.78 - 16.32)	20.34 (11.70 - 32.98)	15.68 (4.30 - 43.49)	39.37 (9.43 - 80.19)	12.69 (9.78 - 16.32)	20.34 (11.70 - 32.98)
0.02	9.28 (4.73 - 17.41)	13.43 (3.85 - 37.58)	10.62 (7.66 - 14.54)	17.09 (8.38 - 31.73)	9.28 (4.73 - 17.41)	13.43 (3.85 - 37.58)	10.62 (7.66 - 14.54)	17.09 (8.38 - 31.73)
0.05	5.19 (4.05 - 6.63)	5.64 (4.13 - 7.66)	5.05 (3.63 - 6.97)	6.30 (4.67 - 8.43)	5.19 (4.05 - 6.63)	5.64 (4.13 - 7.66)	5.05 (3.63 - 6.97)	6.30 (4.67 - 8.43)
0.10	3.28 (2.62 - 4.09)	3.13 (2.44 - 4.01)	3.53 (2.88 - 4.31)	4.57 (3.65 - 5.71)	3.28 (2.62 - 4.09)	3.13 (2.44 - 4.01)	3.53 (2.88 - 4.31)	4.57 (3.65 - 5.71)
0.20	2.42 (1.99 - 2.94)	2.21 (1.81 - 2.70)	1.94 (1.54 - 2.43)	2.73 (2.14 - 3.48)	2.42 (1.99 - 2.94)	2.21 (1.81 - 2.70)	1.94 (1.54 - 2.43)	2.73 (2.14 - 3.48)
0.50	1.28 (1.04 - 1.58)	1.15 (0.90 - 1.47)	0.87 (0.69 - 1.11)	1.50 (1.22 - 1.86)	1.28 (1.04 - 1.58)	1.15 (0.90 - 1.47)	0.87 (0.69 - 1.11)	1.50 (1.22 - 1.86)
1.00	0.66 (0.51 - 0.86)	0.66 (0.53 - 0.83)	0.51 (0.38 - 0.69)	0.82 (0.64 - 1.04)	0.66 (0.51 - 0.86)	0.66 (0.53 - 0.83)	0.51 (0.38 - 0.69)	0.82 (0.64 - 1.04)
2.00	0.39 (0.28 - 0.54)	0.34 (0.25 - 0.48)	0.27 (0.17 - 0.41)	0.41 (0.30 - 0.56)	0.39 (0.28 - 0.54)	0.34 (0.25 - 0.48)	0.27 (0.17 - 0.41)	0.41 (0.30 - 0.56)
5.00	0.23 (0.15 - 0.35)	0.20 (0.13 - 0.31)	0.08 (0.03 - 0.21)	0.18 (0.11 - 0.29)	0.23 (0.15 - 0.35)	0.20 (0.13 - 0.31)	0.08 (0.03 - 0.21)	0.18 (0.11 - 0.29)
10.00	0.13 (0.08 - 0.23)	0.09 (0.04 - 0.21)	0.07 (0.02 - 0.20)	0.10 (0.05 - 0.18)	0.13 (0.08 - 0.23)	0.09 (0.04 - 0.21)	0.07 (0.02 - 0.20)	0.10 (0.05 - 0.18)
20.00	0.08 (0.03 - 0.18)	0.06 (0.02 - 0.16)	0.04 (0.01 - 0.16)	0.06 (0.02 - 0.13)	0.08 (0.03 - 0.18)	0.06 (0.02 - 0.16)	0.04 (0.01 - 0.16)	0.06 (0.02 - 0.13)
50.00	0.01 (0.00 - 0.04)	0.02 (0.01 - 0.09)	0.02 (0.01 - 0.08)	0.01 (0.00 - 0.04)	0.01 (0.00 - 0.04)	0.02 (0.01 - 0.09)	0.02 (0.01 - 0.08)	0.01 (0.00 - 0.04)



Learning Curves

