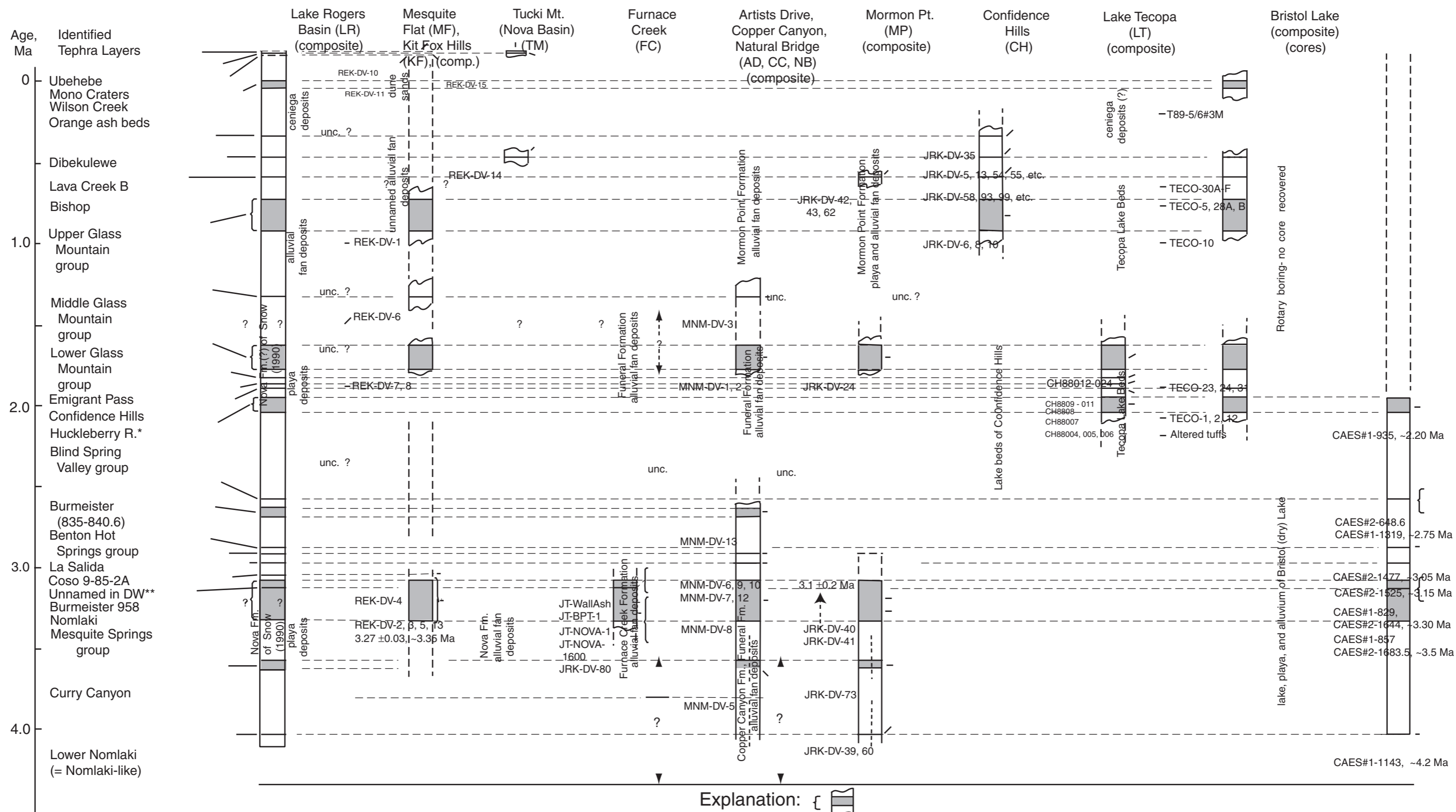


Plate 2: Correlation of Tephra Layers in the Death Valley Area, Lake Tecopa, and Bristol Lake, California

(to accompany Chapter E on Tephra, Friends of the Pleistocene Field Trip Guide, Feb. 17-19, 2001, Sarna-Wojcicki and others)



*Huckleberry Ridge ash bed
 **Unnamed tephra layer in Double Ash Canyon, Furnace Creek area
 See table E1 for sources, petrographic characteristics, and ages of tephra layers named above.

Group of chemically and stratigraphically related tephra layers
 Individual tephra layers (present in section)

Explanation:
 - Correlation uncertain
 ? ?
 - - - - -
 ? ?
 - - - - -