

PARTS MANUAL

FOR

Capacity of 12,000 pounds of line pull on the second layer of cable.
Spooling capacity of each drum is 2,620 feet of 5/8".

- 1,884 feet of 3/4"

A 108 Serial H-8156-H

OWNER _____

ATTENTION OF _____



**hoist
inc.**

4105 MAY ST. HILLSIDE, IL 60162



**hoist
inc.**

4105 MAY ST.
HILLSIDE, ILL. 80162
(312) 544-6085

MAINTENANCE INSTRUCTIONS
LUBRICATION

We suggest that the lubricants for the GENERAL PURPOSE HOISTS be applied in the numerical sequence as symbolized on the illustrated Lubrication Chart and explained as follows:

Lubricate 1-1D first, 2-1D second, etc. The first numeral designates the location of the fitting while the numeral and letter following the dash indicate the frequency of lubrication. For example: Symbol 1-1D means location 1, lubricate every day. 8-3M means location 8, lubricate every 3 months. The single numeral locations should be lubricated as explained in the table.

We list the specifications for these lubricants instead of the brands of the various manufacturers', thus enabling the operator to procure the proper lubricants according to specifications from the most convenient source.

<u>SYMBOL</u>	<u>PARTS LUBRICATED</u>	<u>LUBRICANT SPECIFICATIONS</u>	<u>REMARKS</u>
1-1D	Clutch Shifter	A good grade of smooth lime soap grease of #2 cup grease consistency. (plain bearings)	Apply *daily.
2-1D	Clutch Fulcrum Levers		
3-1D	Drum Shaft Bearings		
4-1D	Clutch Shifter Collars		
5-1D	Drum Hub Bearings		
6	Ball surface of clutch adjusting screw.	Same as used for silent chain drive.	Oil ball surface daily.
7	Gear Teeth	Gear tooth compound of seasonal grade.	Apply as required.
8-3M	Drive Shaft Ball bearings	Same grade as used for plain bearings.	Every 3 months
9	Silent Chain (See-"Adjustments")	A well refined mineral oil of SAE-40 viscosity.	Keep oil cup supplied.

* Daily denotes every 8 working hours.

The viscosities listed are for summer application. Correspondingly lighter grades should be used in colder weather.

For care and operation of engine or motor (when electrically driven) see manufacturers' instruction book.

NOTE: WHILE THIS LUBRICATION CHART OUTLINES THE TWO DRUM HOIST, IT IS OUR INTENTION THAT THIS CHART BE USED FOR THE SINGLE DRUM AND THREE DRUM HOIST ALSO. THE CORRESPONDING LOCATIONS TO BE LUBRICATED ACCORDINGLY.

ADJUSTMENTS

CLUTCH & BRAKE: When the brake or clutch linings show considerable wear on one end of the lining, this wear may be equalized in the following manner:

Disconnect the assembled band by removing the band end pins, then turn the assembled band, end for end, and reassemble. When this has been accomplished, the band will be assembled to the hoist so the former live end of band will be attached to the dead end location; also it will then be necessary to adjust the clearance between the lining and the clutch or brake drum. This clearance should be just sufficient to prevent the lining from dragging, and should be regulated by means of the adjusting screws on these units.

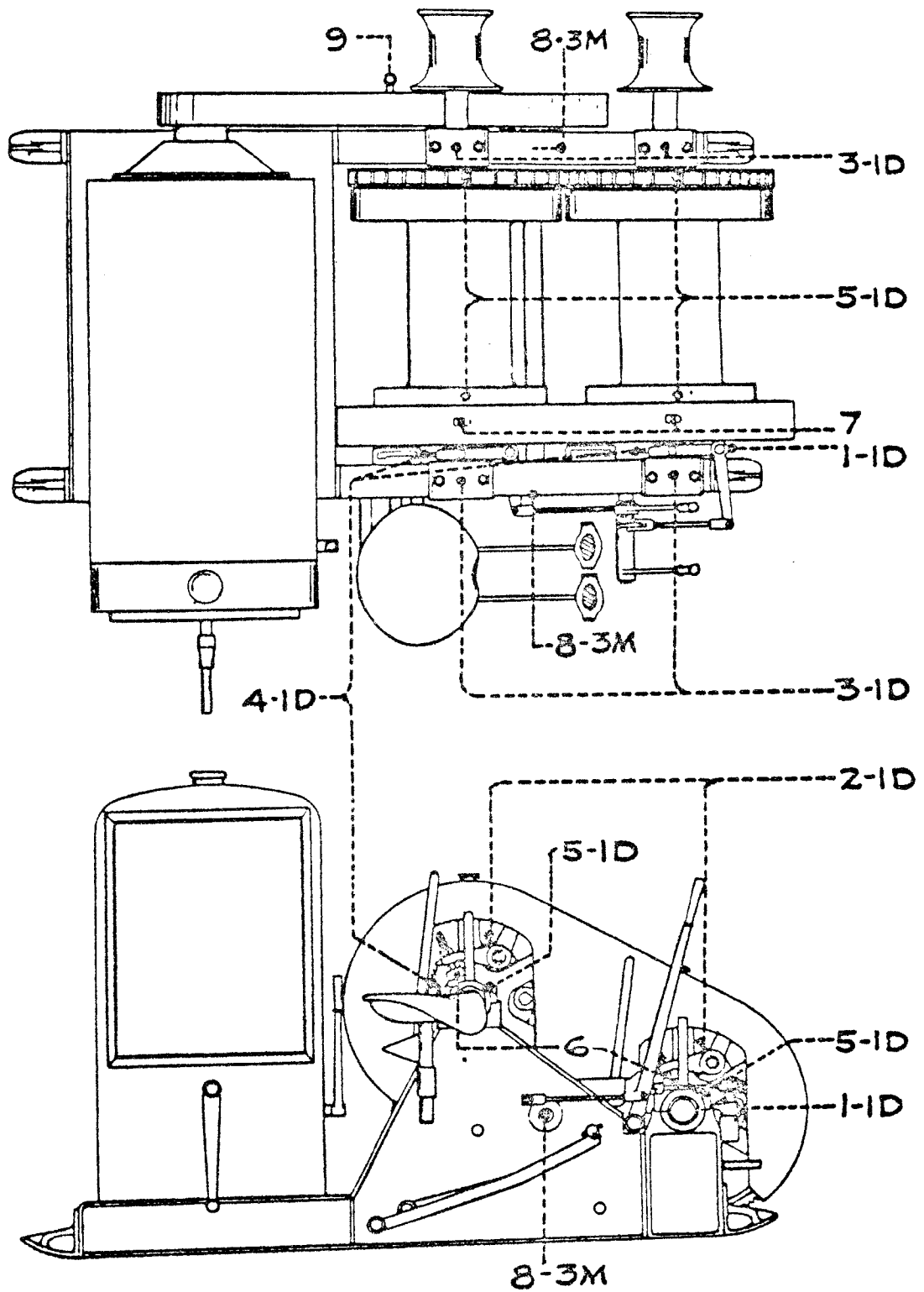
SILENT CHAIN DRIVE: When it is desired to alter the length of a silent chain a Hunting Link must be used. The Hunting Link is a unit of three links in length, the center links being offset. When chain is parted it should be opened at pin closest to the tail of the arrow, stamped on side of link.

TO SHORTEN CHAIN: Remove four lengths of links, then attach the Hunting Link in place of the removed links. This is equivalent to shortening the chain the length of one link.

Chain already containing a Hunting Link may be shortened the length of one link by removing the offset links of the Hunting Link unit. This shortening can also be accomplished by using two chain links in place of the Hunting Link originally used.

The silent chain should be lubricated only through the drip oil cup attached to the chain case. The case should be drained of accumulated oil occasionally, and flushed with kerosene, as the silent chain here used should NOT run in oil.

LUBRICATION CHART

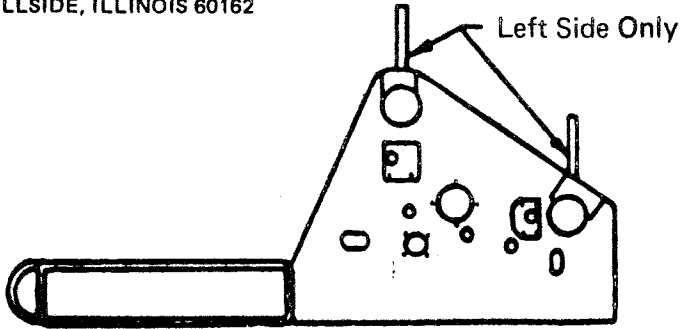


~ SEE "MAINTENANCE INSTRUCTIONS" ALSO ~

**hoist
inc.**

4105 MAY STREET
HILLSIDE, ILLINOIS 60162

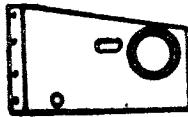
BED, BRACKETS & GUARDS



Right Side Shown

BED ASSEMBLED

715337 - Model 70B
714962 - Model 90B
715296 - Model 120B



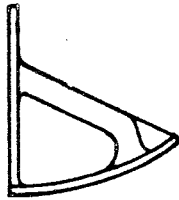
SIDE FRAME (Front Drum) ASSEMBLED

234028 R.H. (Shown) - Model 70B
234029 L.H. - Model 70B
139821 R.H. (Shown) - Model 90B
139823 L.H. - Model 90B
234119 R.H. (Shown) - Model 120B
234128 L.H. - Model 120B



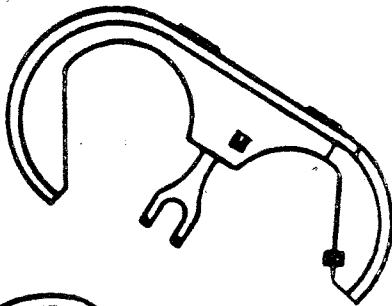
SKID ASSEMBLED

65205 - Model 70B
65097 - Model 90B
65263 - Model 120B



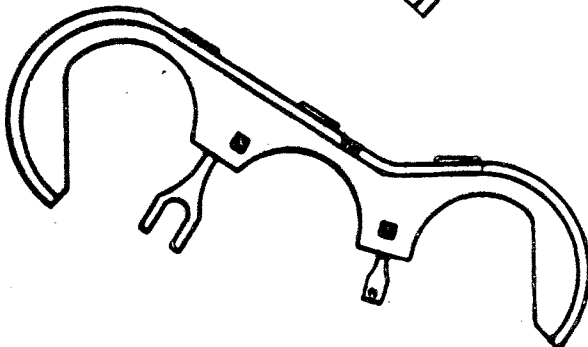
SKID SHOE ASSEMBLED

L-4237 - Model 70B
L-4238 - Model 90B
L-4239 - Model 120B



GEAR GUARD ASSEMBLED

234036 - Model 70B
139872 - Model 90B
234099 - Model 120B



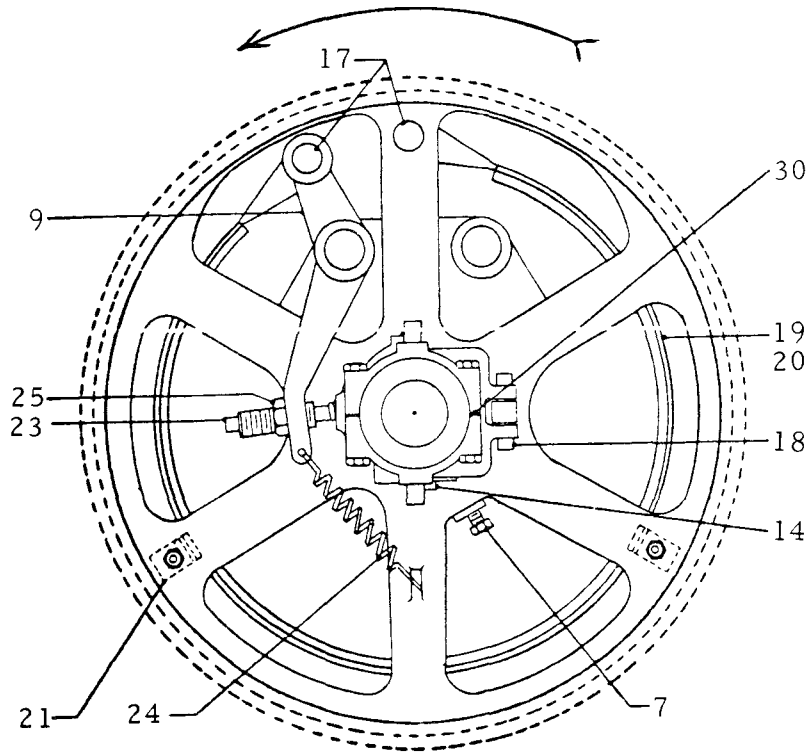
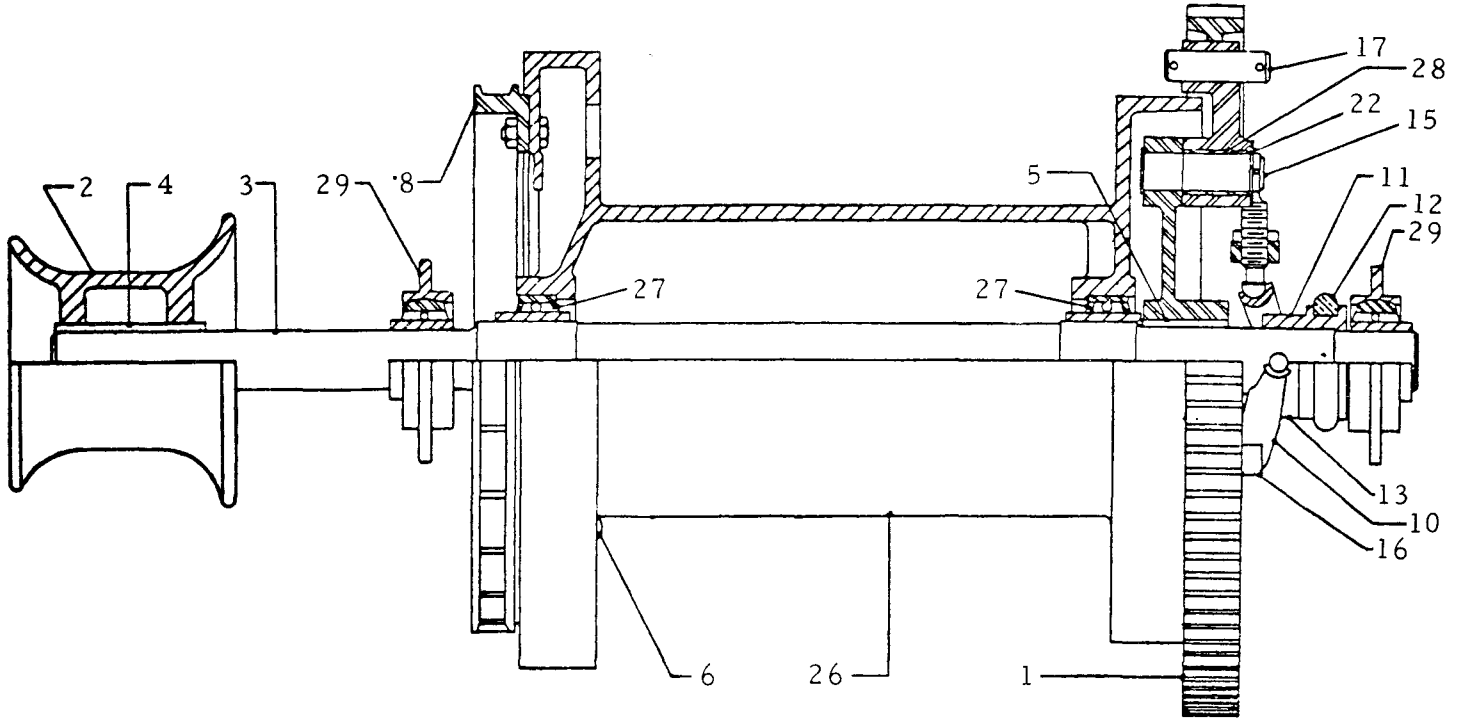
**GEAR GUARD ASSEMBLED
3 DRUM ATTACHMENT**

234804 - Model 70B
234519 - Model 90B
234799 - Model 120B

**hoist
inc.**

4105 MAY STREET
HILLSIDE, ILLINOIS 60162

DRUM SHAFT ASSEMBLIES
(DRUM RUNNING OVER)
MODEL 70B - 714397
MODEL 90B - 712559
MODEL 120B - 713556

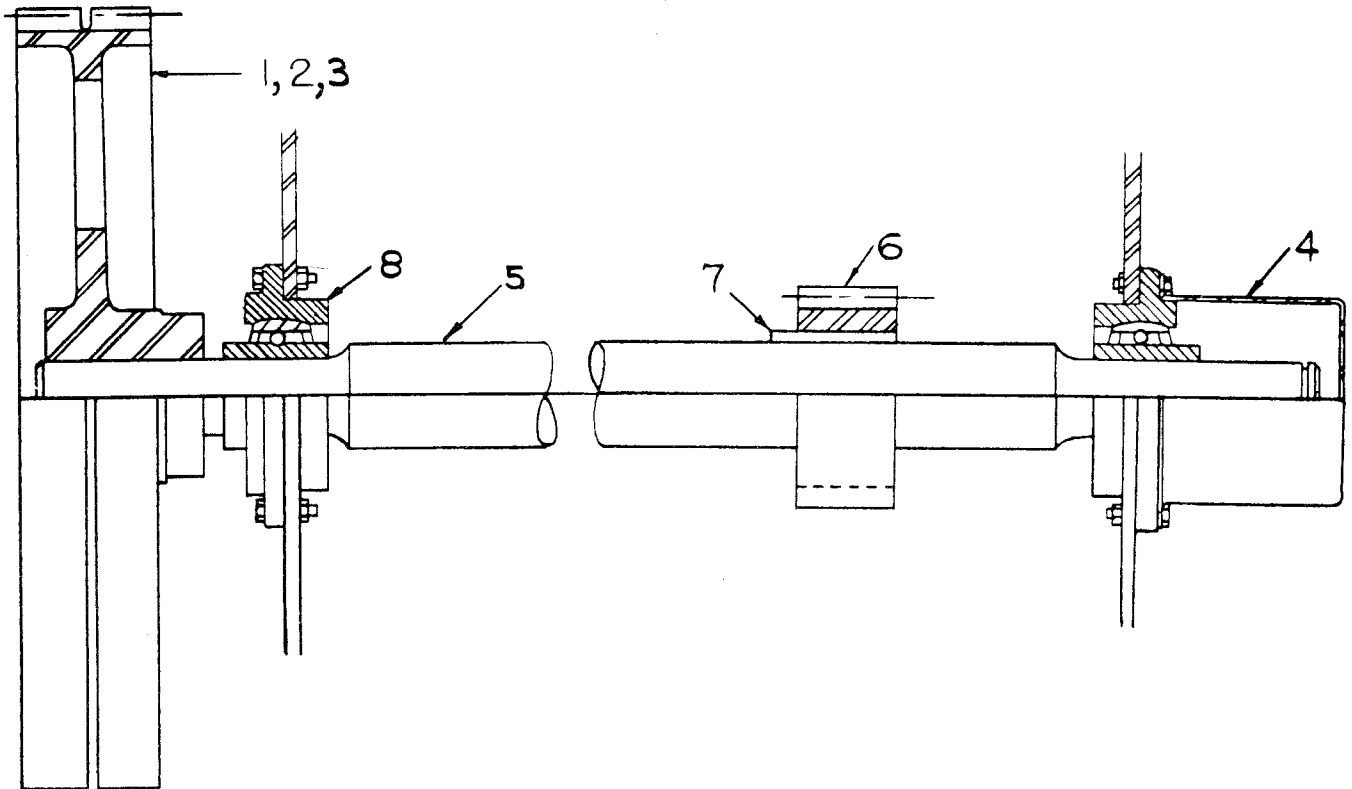


hoist inc.

4105 MAY STREET
HILLSIDE, ILLINOIS 60162

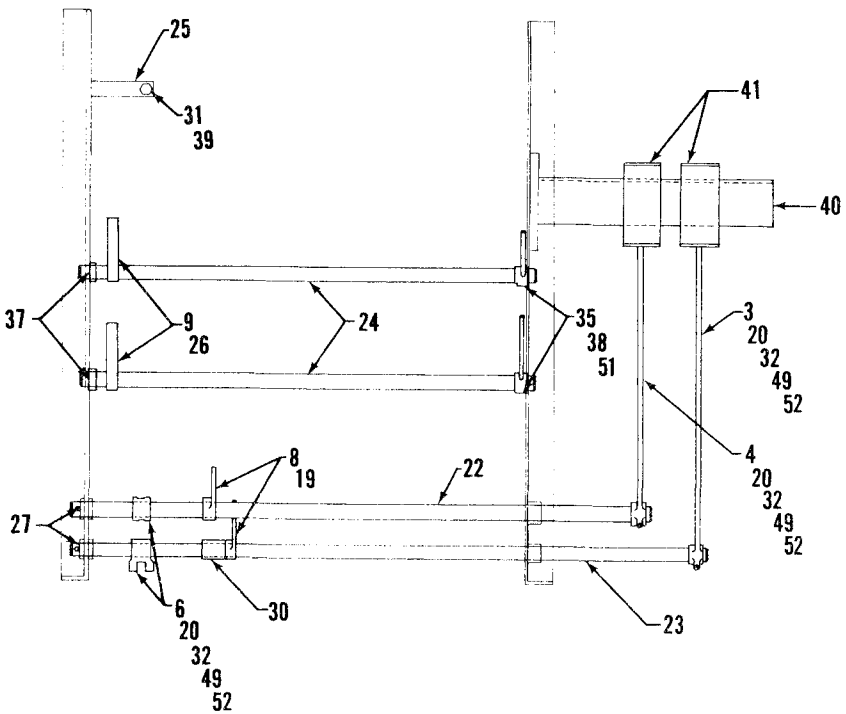
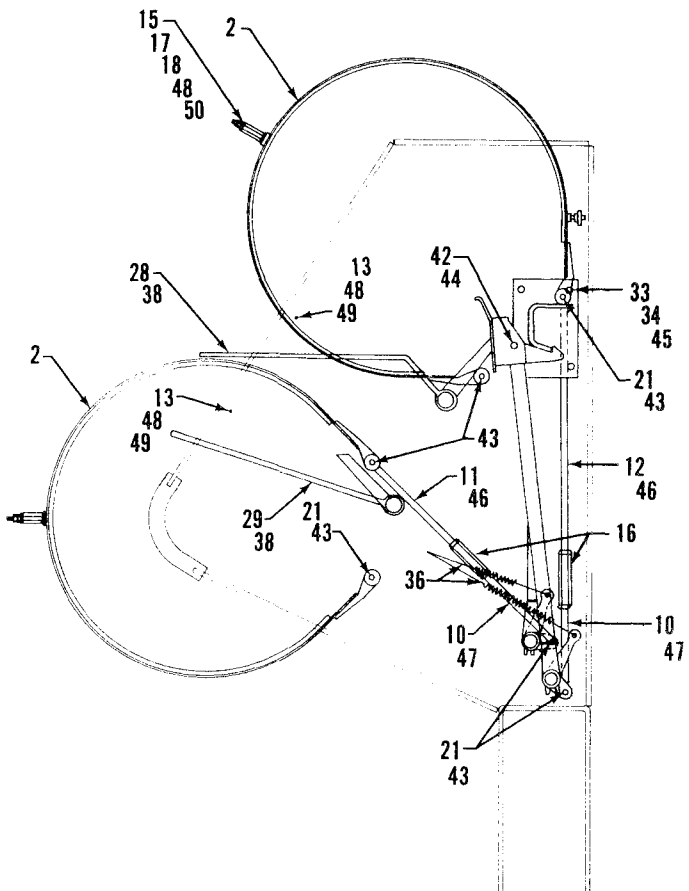
DRUM SHAFT ASSEMBLIES
(DRUM RUNNING OVER)
MODEL 70B — 714397
MODEL 90B — 712559
MODEL 120B — 713556

REF. NO.	70B HOIST PART NO.	90B HOIST PART NO.	120B HOIST PART NO.	NO. REQ'D.	NAME OF PART
1	63702-L	65034-L	65250-L	1	Friction Gear
2	F-7981	F-7469	F-8122	1	Winch Head
3	F-7932	F-7408	F-8116	1	Drum Shaft
4	404308	404861	405224	1	Taper Key
5	404466	404932	403905	1	Straight Key
6	A-9514-F	A-9514-F	M-3171	1	U-Bolt
7	M-6456	M-6456	M-6456	1	Special Cap Screw
8	A-8880	A-8880	A-9661	1	Ratchet
9	C-3569	C-3469	C-4846	1	Clutch Lever
10	B-9443	A-5941	A-5941	1	Toggle Link
11	B-9458	C-3470	C-4844	1	Sliding Collar
12	130011	504318	504318	1	Clutch Shifter
13	B-9463	A-5945	A-5945	1	Guide Yoke
14	A-8337	A-3043	A-3043	2	Locking Plate
15	B-9459	C-3471	C-4845	1	Pin & Cotter
16	B-9462	A-5950	A-5950	1	Fulcrum Pin
17	L-4648-L	L-4649-J	L-4649-M	2	Pin & Snap Rings
18	L-4469-M	L-4469-P	L-4469-P	1	Pin & Cotters
19	131072	130867	135805	1	Clutch Band
20	810276	810279	810280	1	Clutch Lining
	804502 (23)	804504 (27)	804504 (35)		Rivets
21	130171	130872	39638	2	Clutch Band Guide
22	M6856	A-8359-R	L-8910	1	Plate Washer
23	A-8857	24456	24456	1	Adjusting Screw
24	M-6455 M 7089	M-6455	M-6455	1	Tension Spring
25	804767	C-4525	C-4525	1	Lock Nut (Jam Nut)
26	714395	712552	704118	1	Friction Drum
27	800278	800280	800281	2	Bearing
28	808945	808977	808977	2	Tubular Bushing (Sleeve Bearing)
29	800288	800288	800290	2	Bearing
30		M-6454	M-6454	6	Shim



REF. NO.	70B Hoist PART NO.	90B Hoist PART NO.	120B Hoist PART NO.	NO. REQ'D.	NAME OF PART
*1					Chain Sprocket
*2					Key
*3					Silent Chain
4	F-7558	F-7558	F-7832	1	Shaft Guard
5	L-8247	F-7542	F-8139	1	Drive Shaft
6	F-7887	D-9732	F-8142	1	Pinion
7	Line 6	Line 8	Line 6	1	Tapered Key
8	Line 8	Line 12	Line 5	2	Bearing

* Due to the various types of power units used, part numbers cannot be given. When ordering these parts, give Reference Number, Model of Hoist and Serial Number.



49-2855

(OVER)

BRAKE & DOG SYSTEM-2/DRUM
MODEL 120B G.P. HOIST 700884

REF. NO.	PART NO.	NO. REQ'D.	NAME OF PART
2	234116	2	Brake Band
	810291	2	Lining, Strip; 3/8" x 4", (Specify Required Length) (1 Per Assembly)
	804504	72	Rivet, Semi-Tubular; 1/4" Dia. x 5/8" (36 Per Assembly)
3	501301	1	Lever, Foot
4	501302	1	Lever, Foot
6	A-9599	2	Crank, Brake; 2-1/4" Centers
8	23002	2	Crank, Spring; 5" Centers
9	22980-F	2	Dog; 8" Centers
10	A-9597-D	2	Bolt, Tee; R. H., 3/4" Dia. x 10-1/4"
11	A-9597-F	1	Bolt, Tee; L. H., 3/4" Dia. x 13-1/2"
12	A-9597-G	1	Bolt, Tee; L. H., 3/4" Dia. x 28-1/2"
13	814580	2	Cap Screw, Hex. Head; 1/2"-13 UNC x 1", Grade 5
15	21629-P	2	Guide, Brake Band; 1/8" x 2" x 4-7/8"
16	A-9598	2	Nut, Sleeve, Hex.; 1-1/8" x 4-1/2"
17	814751	4	Cap Screw, Hex. Head; 3/8"-16 UNC x 1/2", Grade 5
18	812440	2	Cap Screw, Hex. Head; 1/2"-13 UNC x 3-1/4", Grade 5
19	803388	4	Set Screw, Hex. Sock, Headless, Cup Point; 1/2"-13 UNC x 3/4"
20	801656	4	Cap Screw, Hex. Head; 1/2"-20 UNF x 2-1/2", Grade 5
21	L-4469-T	6	Pin; 3/4" Dia. x 4-1/8"
22	F-8247	1	Shaft, Brake; 1-1/2" Dia. x 60"
23	401553	1	Shaft, Brake; 1-1/2" Dia. x 66"
24	F-8246	2	Shaft, Dog; 1-1/2" Dia. x 46-3/4"
25	430507	1	Bar, Brake Support; 1/2" x 1-1/4" x 6-1/2"
26	804581	2	Rivet, Button Head; 3/8" Dia. x 3"
27	403646	2	Pin, Stop; 1/2" Dia. x 3"
28	F-8274	1	Dog Lever
29	F-8273	1	Dog Lever
30	L-7048-AN	1	Spacer, Pipe; 1-1/2" Std. x 2-1/2"
31	806480	1	Cap Screw, Hex. Head; 1/2"-13 UNC x 1-3/4", Grade 5
32	805000	4	Key; 5/16" x 1-3/8", SAE #23, ASA #1011
33	804722	4	Nut, Finished; 5/8"-11 UNC
34	805062	4	Washer, Lock; 5/8"-Med. Spring
35	810367	1	Wire; 16 GA., Black Annealed (Specify Required Length)
36	D-6111	2	Spring, Tension; .92" Wire Dia. x 1-1/8" OD x 7" Inside Hooks
37	800022	2	Collar, Hollowell; 1-1/2" Dia.
38	401552	2	Set Screw, Square Head, Half Dog Point; 3/8"-16 UNC x 1-1/4"
39	814749	1	Nut, Finished Hex, Jam; 1/2"-13 UNC, Grade 5
40	501303	1	Latch Plate
41	500904	2	Pedal
42	804861	4	Pin, Cotter; 1/8" x 1"
43	810531	12	Pin, Cotter; 3/16" x 1-1/4"
44	L-4442-B	2	Pin; 1/2" Dia. x 1-13/16"
45	804162	4	Bolt, Round Head; 5/8"-11 UNC x 2"
46	804355	2	Nut, Finished, L. H.; 3/4"-10 UNC
47	804723	2	Nut, Finished; 3/4"-10 UNC
48	804720	6	Nut, Finished; 1/2"-13 UNC
49	805060	4	Washer, Lock; 1/2"-Med. Spring
50	805058	4	Washer, Lock; 3/8"-Med. Spring
51	804718	2	Nut, Finished; 3/8"-16 UNC
52	804741	2	Nut, Finished; 1/2"-20 UNF

BILL OF MATERIAL

AMERICAN HOIST
& DERRICK CO.

TITLE: CHAIN DRIVE

NUMBER 425688

CHG. 1

(NO DRAWING)

USED ON: MODEL 120B HOIST

DATE: 8-5-66

NO. REQ'D	PART NUMBER	TITLE & DESCRIPTION	FINISHED SIZE - ALL DIMENSIONS IN INCHES EXCEPT WHERE INDICATED FEET (')	Code 1	MATERIAL	Code 2	Line No.
1		ASSEMBLY					01
1	E-3066-B	Sprocket, Chain 105T - 3/4P - 25.071 P.D. - 4-1/8 Face		M	1C-7		02 03 04
1	425664	Sprocket, Chain 19T - 3/4P - 4.557 P.D. - 4-1/8 Face		M	E-3020-C		05 06 07
1	404857	Key, Taper	5/8 x 5/8 x 5	M	A-18		08
1	404306	KEY, TAPER	1/2 x 1/2 x 5	M	A 18		09 10 11
1		Chain Silent SC-616 3/4P x 4 Wide x 13'- 0 Lg. } (208 Pitches)		B	801389		12 13 14 15 16
<p>Engine sprocket has 19 teeth driving 105 teeth = 5.53:1 Winch pinion has 15 teeth turning 90 teeth = 6:1 If engine @2100 RPM = 379 RPM = 63 RPM X 45"/12 = 235 FPM</p>							17 18 19 20 21
							22
							23
							24
							25
							26
							27
							28
							29
							30
							31
							32
							33
							34
							35
							36
							37
							38
							39
							40
							41
							42
							43
							44
							45
							46
							47
							48
							49
							50
							51
							52

CODE 2:
 A = SHIP TO BAY CITY FINISHED
 F = SHIP TO FT. WAYNE FINISHED
 B = SHIP TO BAY CITY ROUGH
 R = SHIP TO FT. WAYNE ROUGH
 C = BAY CITY TO FURNISH
 T = FT. WAYNE TO FURNISH

CODE 1:
 B = PURCHASED
 M = MANUFACTURED
 P = PURCHASED & SHOP-PROCESSED

4			8			12			14		
3			7			11			13		
2			6			10			No.	CN.	DATE
1	57728	12-11-69	5			9			REQ'D		
No.	CN.	DATE	No.	CN.	DATE	No.	CN.	DATE			