

ILS or LOC/DME RWY 6

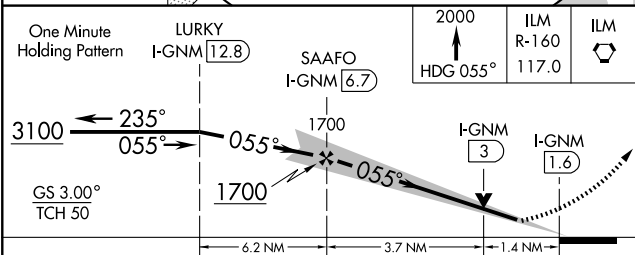
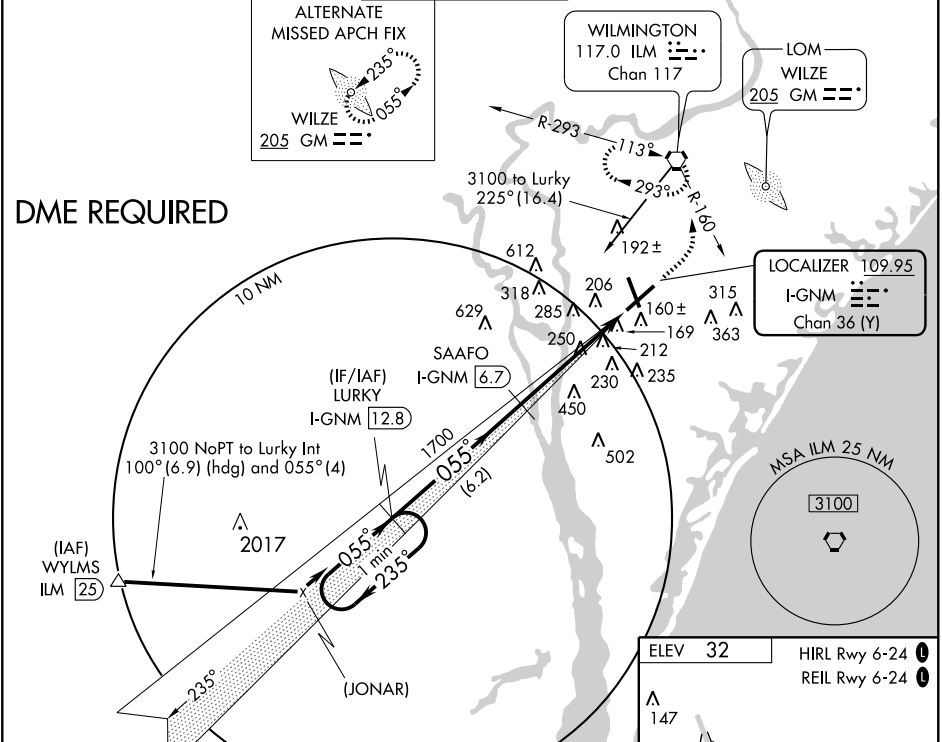
WILMINGTON INTL (ILM)

LOC/DME I-GNM 109.95 Chan 36 (Y)	APP CRS 055°	Rwy Idg 8016 TDZE 28 Apt Elev 32
--	------------------------	---

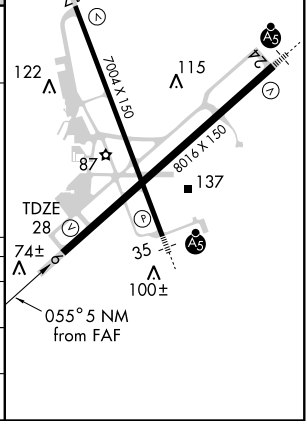
▲ If local altimeter setting not received, use Brunswick County altimeter setting and increase all DAs/MDAs 60 feet.
ASR VDP NA when using Brunswick County altimeter setting.

MISSED APPROACH: Climb to 2000 via heading 055° and ILM VORTAC R-160 to ILM VORTAC and hold.

ATIS 124.975	WILMINGTON APP CON ★ 118.25 284.65 (164°-343°) 135.75 346.35 (344°-163°)	WILMINGTON TOWER ★ 119.9 (CTAF) 239.3	GND CON 121.9 348.6	CLNC DEL 121.9 348.6	UNICOM 122.95
------------------------	--	--	-------------------------------	--------------------------------	-------------------------



CATEGORY	A	B	C	D
S-ILS 6	228/40 200 (200-¾)			
S-LOC 6	500/50	472 (500-1)	500/60 472 (500-1¼)	500-1½ 472 (500-1½)
CIRCLING	560-1	528 (600-1)	560-1½ 528 (600-1½)	640-2 608 (700-2)



SE-2, 12 MAR 2009 to 09 APR 2009

SE-2, 12 MAR 2009 to 09 APR 2009