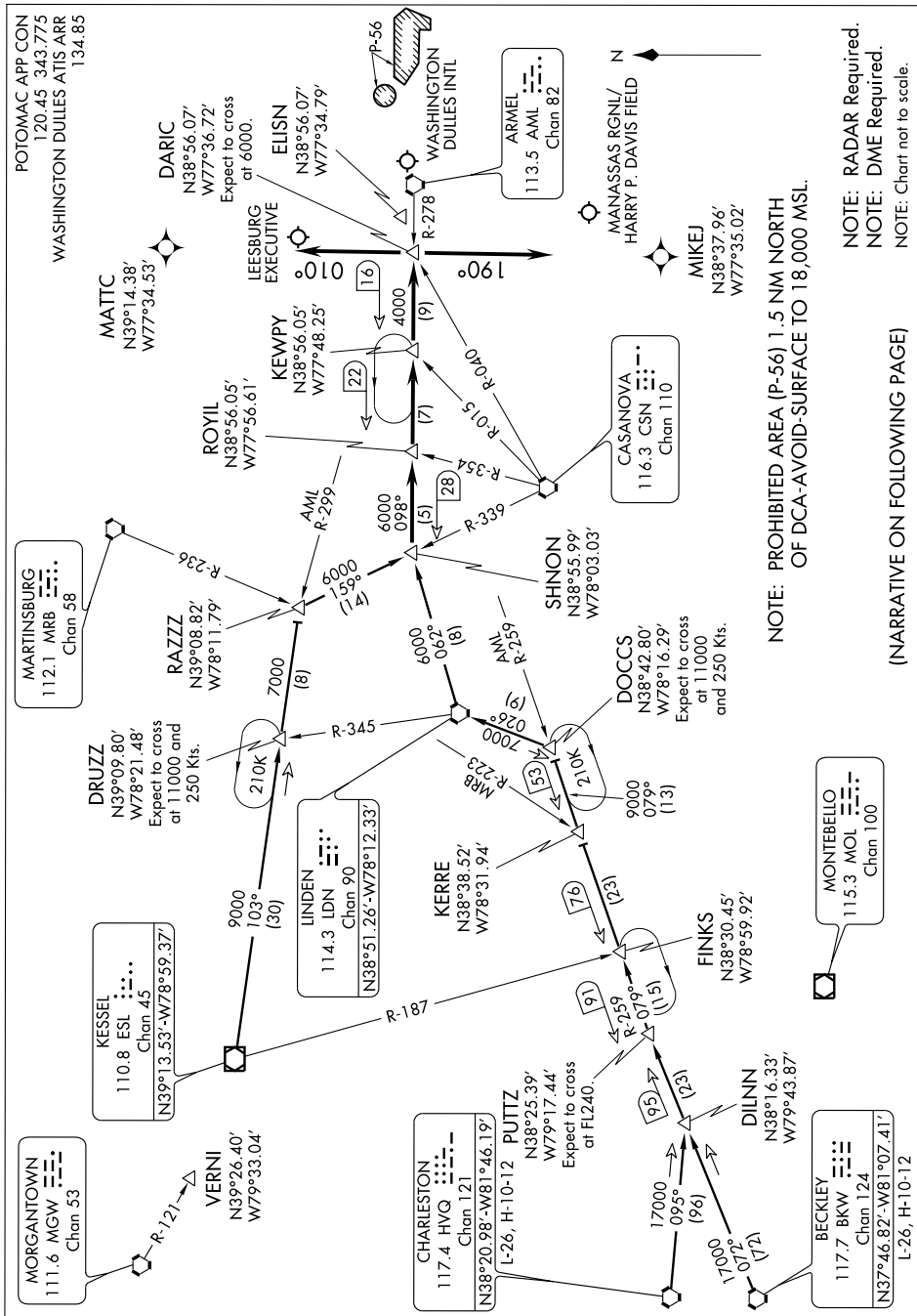


ROYIL TWO ARRIVAL

WASHINGTON, DC

NE-3, 12 FEB 2009 to 12 MAR 2009



NOTE: RADAR Required.
NOTE: DME Required.
NOTE: Chart not to scale.

NOTE: PROHIBITED AREA (P-56) 1.5 NM NORTH OF DCA-AVOID-SURFACE TO 18,000 MSL.

(NARRATIVE ON FOLLOWING PAGE)

NE-3, 12 FEB 2009 to 12 MAR 2009

ROYIL TWO ARRIVAL

WASHINGTON, DC