

WILKES BARRE THREE ARRIVAL (LVZ.LVZ3)

TETERBORO, NEW JERSEY

NE-2, 12 FEB 2009 to 12 MAR 2009

NOTE: This STAR applicable to all aircraft capable of 250 knots IAS or greater landing at Teterboro, Morristown Muni, Essex County, Princeton, Solberg-Hunterdon, Linden and Somerset.

NOTE: Advise ATC prior to speed reduction below 250 knots.

NEW YORK APP CON
127.6.379.9
NEWARK ATIS
115.7

JAMESTOWN
114.7 JHW
Chan 94
N42°11.32'-W79°07.28'
L-30, H-10

HOXIE
N41°51.90'
W77°51.16'

WILKES-BARRE
111.6 LVZ
Chan 53
N41°16.37'-W75°41.37'
L-30-33-34, H-10-12
Expect clearance to cross at FL 180.

HUGUENOT
116.1 HUO
Chan 108

SPARTA
115.7 SAX
Chan 104

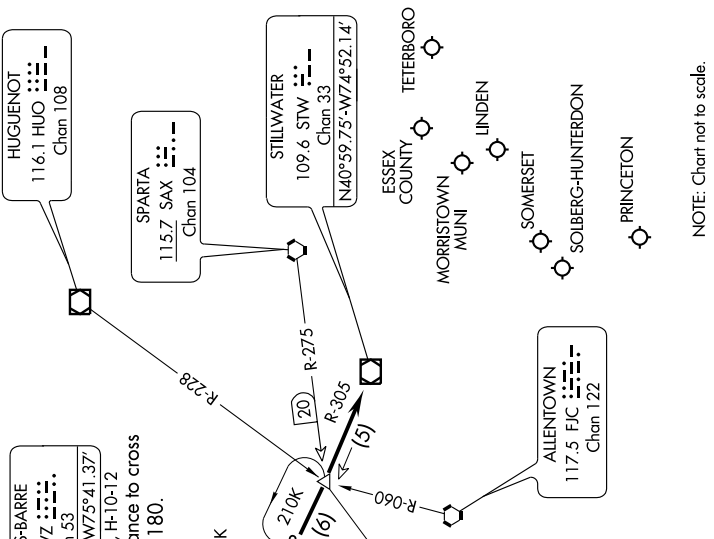
SLATE RUN
113.9 SLT
Chan 86

HARTY
N41°04.27'-W75°05.39'

MUGZY
N41°01.81'-W74°58.16'
Expect clearance to cross at 6000 feet.

STILLWATER
109.6 STW
Chan 33
N40°59.75'-W74°52.14'

JAMESTOWN TRANSITION (JHW.LVZ3): From over JHW VOR/DME via JHW R-115 (J70) and LVZ R-301 to LVZ VORTAC. Thence....
....From over LVZ VORTAC, via LVZ R-124 and STW R-305 to STW VOR/DME.
 Expect radar vectors to final approach course.



NOTE: Chart not to scale.

WILKES BARRE THREE ARRIVAL (LVZ.LVZ3)

TETERBORO, NEW JERSEY

NE-2, 12 FEB 2009 to 12 MAR 2009