

Oil and Gas Field Code Master List 1998

January 1999

Energy Information Administration
Office of Oil and Gas
U.S. Department of Energy
Washington, DC 20585

This report was prepared by the Energy Information Administration, the independent statistical and analytical agency within the Department of Energy. The information contained herein should be attributed to the Energy Information Administration and should not be construed as advocating or reflecting any policy position of the Department of Energy or any other organization.

Preface

The *Oil and Gas Field Code Master List 1998* is the seventeenth annual listing of all identified oil and gas fields in the United States. It is updated with field information collected through October 1998. The purpose of this publication is to provide standardized names and codes for identifying domestic fields. Use of these field names and codes fosters consistency of field identification by government and industry. As a result of their widespread adoption they have in effect become a national standard. The use of field names and codes listed in this publication is required on survey forms and other reports regarding field-specific data collected by EIA. The surveys currently using these field names and/or field codes are Form EIA-23, "Annual Survey of Domestic Oil and Gas Reserves", and Form EIA-191, "Monthly Underground Gas Storage Report".

EIA gratefully acknowledges the assistance provided by various State organizations and trade associations, and the Minerals Management Service of the U.S. Department of the Interior, in verifying the existence of oil and gas fields and confirming their officially recognized names.

General information regarding this publication may be obtained from David F. Morehouse (202-586-4853, david.morehouse@eia.doe.gov), Natural Gas Division, in the Energy Information Administration's Office of Oil and Gas. Detailed information on the report's content may be obtained from William L. Monroe (202-586-4665, william.monroe@eia.doe.gov) or Robert F. King (202-586-4787, robert.king@eia.doe.gov).

Contents

Page

1. Overview	1
Introduction	1
Summary Statistics	1
Publication Organization and Content	1
History of Field Code Project	2
Definition of a Field	2
Coding Of Fields	2
General Field Naming Conventions	3
2. Methodology for Field Code Assignments	5
Purpose	5
General System Overview	5
Field Information Research	5
State Source Review Procedures	5
Assigning New Field Code Numbers	7
Field Alias Procedures	7
Field Alias Records That Have Several Official Names	7
Fields With More Than One Name Change	7
Offshore Code Assignments	8
Field Naming Conventions	8
Use of Compass Directions in Field Names	8
Special Naming Conventions	8
Reused Field Names	9
Invalid Field Record Procedures	9
3. User's Guide	11
Field Code Master List	11
Master Field Record	11
Alias Field Record	12
Field Code Index	12
Coalbed Methane Field List	12
Active Gas Storage Fields	12
Fields Located in Multiple Jurisdictions	13
Outer Continental Shelf Planning Areas	13
Glossary	38
Oil and Gas Field Code Master List	39
Oil and Gas Field Code Index	341
Invalid Field Record List Updates	462
Tables	
1. List of Authorities on Oil and Gas Field Nomenclature	4
2. State Abbreviations and Geographic Subdivision Codes	15
3. U.S. Geological Survey Alaska Quadrangles and Associated Codes	16
4. Coalbed Methane Fields	18
5. Active Gas Storage Fields	20
6. Fields Located in Multiple Jurisdictions	25

Figures

1. Field Code Processing Flow Chart	6
2. Sample of a Field Code Master List Page	14
3. Sample of a Field Code Index Page	17
4. Subdivisions of Alaska and U.S. Geological Survey Quadrangles	30
5. Subdivisions of California	31
6. Subdivisions of Louisiana	32
7. Subdivisions of New Mexico	33
8. Subdivisions of Texas	34
9. Western Planning Area, Gulf of Mexico Outer Continental Shelf Region	35
10. Central Planning Area, Gulf of Mexico Outer Continental Shelf Region	36
11. Eastern Planning Area, Gulf of Mexico Outer Continental Shelf Region	37

1. Overview

Introduction

This is the seventeenth annual edition of the Energy Information Administration's (EIA) *Oil and Gas Field Code Master List*. It reflects data collected through October 1998 and provides standardized field name spellings and codes for all identified oil and gas fields in the United States. The *Oil and Gas Field Code Master List* is available in electronic form:

- On the quarterly EIA Energy InfoDisc CD-ROM
- At the EIA World-Wide Web site
<<http://www.eia.doe.gov>>

The complete publication appears in electronic format each year but is printed every other year. In the alternate years, new and changed field information is printed in *Oil and Gas Field Code Master List Updates*.

Other Federal and State government agencies, as well as industry, use the EIA *Oil and Gas Field Code Master List* (FCML) as the standard for field identification. In order for it to be useful, it must be accurate and remain current. To accomplish this, EIA constantly reviews and revises this list. EIA welcomes all comments, corrections, and additions to the FCML. All such information should be provided to Rhonda Green of EIA (214-720-6161, rhonda.green@eia.doe.gov).

Summary Statistics

There are 58,874 field records in this year's FCML, 508 more than last year. The FCML includes:

- Master field names, with separate field records for each State and county in which a given field resides. A field may also occur in more than one jurisdiction and even be assigned different names by the respective State or Federal field naming authorities.
- Alias field names, specifying field names previously assigned by a field naming authority but not in use currently. The FCML links each alias field name to the currently recognized (master) field name in same State and county. In the Gulf of Mexico, alias field names are also used to identify each offshore area and numbered block in which a given field occurs.

Taking into consideration the double-counting of field records under such circumstances, EIA identifies 47,351 distinct oil and gas fields in the United States as of October

1998. This count includes fields that no longer produce oil or gas as well as 491 fields used at some time, in whole or in part, for underground storage of natural gas or crude oil. The following is a summary count by hydrocarbon type of the distinct U.S. oil and gas fields:

Field Type	Number
U.S. distinct oil and gas fields	47,351
Fields with oil	34,969
Fields with gas	32,256
Fields with associated-dissolved gas	15,962
Fields with nonassociated gas	21,668
Fields with unspecified hydrocarbon	140

Notes: The sum of the hydrocarbon-component fields is greater than the total number of distinct fields because many fields have more than one type of hydrocarbon present. Fields with unspecified hydrocarbon include aquifers used for underground gas storage as well as fields for which the hydrocarbon type is not clearly documented at this time in EIA records.

EIA has assigned a unique six-digit *field name code* to each field name. The number of field names that have been recognized by the field naming authorities, or by tradition, total 53,447. Of these, 46,348 are currently considered official, while 7,099 are not currently declared official by the field naming authorities and are designated as *alias names* by EIA.

This report also contains an Invalid Field Record List Update of 6 records that have been removed from the FCML since last year's report. These records were found to be either technically incorrect or to represent field names which were never recognized by field naming authorities.

Publication Organization and Content

Chapter 2 provides details on the methodology used in reviewing source information, standardizing field names where appropriate, and assigning field codes. Chapter 3 and the Glossary that follows it provide explanations and definitions for utilizing this publication. The Field Code Master List itself follows the Glossary. It is organized by State, showing fields sorted alphabetically by field name within each State. Fields in the Federal Offshore Outer Continental Shelf are listed following Wyoming. Each field name entry contains the field code, field name, geographical information, and other related data such as hydrocarbon

occurrence and year of field discovery. Following the Master List is the Field Code Index (not included in *Oil and Gas Field Code Master List Updates*). This is an abbreviated listing sorted by field code with field names and the State or States in which each field name appears in the Master List. The Field Code Index is intended as a quick reference when only the field code happens to be known. The Master List must be consulted for the detailed information. Following the Field Code Index is the Invalid Field Record List Updates, which identify field records appearing the previous year's Master List that now should not be used for the reason stated.

History of Field Code Project

The EIA Field Code Master List evolved from the Federal Power Commission's Field/Plant Code List (FPC Field Code List). The FPC Field Code List, originally developed in the 1960s, had a unique code assigned to each field on the list. That is, two fields having identical names in separate States had separate six-digit field codes. However, some respondents to Form FPC 15, "Interstate Pipeline's Annual Report of Gas Supply", began using the first code given in the list for a field name, regardless of the State involved. With few respondents applying computerized edits to their submissions at that time, miscoding of fields became a problem. The solution applied was to recode the fields on the list so that any fields with identical names were assigned the same six-digit code (a field name code) but were differentiated by the State and county codes incorporated in the full field code. For example, 145385KS101 is the field code for the CLARK field in Kansas and 145385TX285 is the field code for the CLARK field in Texas, while 145385 is the *field name code* for CLARK.

The FPC Field Code List, originally designed to handle data relating to interstate gas fields, was expanded over the years to include the names of oil fields and intrastate gas fields. Six-digit codes were assigned in ascending order to alphabetically sorted field names. Codes from the FPC Field Code List were used in filing Form FPC 15 and Form FPC 8, "Underground Gas Storage Report".

After the establishment of the Department of Energy (DOE) in 1977, the requirement to gather annual, verifiable oil and gas reserves estimates led to the development of Form EIA-23, "Annual Survey of Domestic Oil and Gas Reserves". Form EIA-23 collects certain data by field, and the use of the FPC Field Code List aided the reporting and processing of these data. As use of the FCML expanded by way of the Form EIA-23 program, additional work to verify and update the code list was necessary to keep it current. In 1981, the correlation between the code number sequence and the alphabetical field name sequence was dropped. This

change precluded the necessity of periodically reassigning field codes in order to maintain the list in parallel numeric and alphabetic order.

The counts showing the number of distinct fields first appeared with the 1988 annual FCML publication. A complex procedure merges the FCML with a list of U.S. counties contiguous to one another and also the list of multi-jurisdictional fields (see Chapter 3). Essentially, this procedure forms a code unique to each true field that can then be listed with each county-level field entry. A future enhancement to this Master List will be to publish these unique codes.

Definition of a Field

A field is defined as "an area consisting of a single reservoir or multiple reservoirs all grouped on, or related to, the same individual geological structural feature and/or stratigraphic condition. There may be two or more reservoirs in a field which are separated vertically by intervening impervious strata, or laterally by local geologic barriers, or by both."

This definition is not used by all States in their designation of fields; consequently, areas classified as individual fields by some States may be found combined in the FCML.

Coding Of Fields

As noted above, the six-digit field name code is common to a specific field name, regardless of whether one or several distinct fields exist having that particular name. However, a given field (at least within a specified county) can be identified if the field name code is coupled with the corresponding State abbreviation and county code.

Many field codes still remain in a numerically ascending order when the FCML is sorted by alphabetized field name. However, field names added since 1981 have been assigned the first available (numerically lowest) unused code. Fields located in the Federal Offshore area and large State offshore blocks of the Gulf of Mexico will continue to be represented by codes above 800000, according to their offshore area name and block number.

On the Master List, *italicized* field name codes identify alias records. The current official field name and field code appear **in bold type** after the label "Alias For:" on the line immediately following the alias field name. Respondents to the Form EIA-23 may not use alias field names and codes. Respondents to Form EIA-191 may use the alias field names when the field name used for gas storage operations in a particular field differs from the official name assigned to the

field as a whole. See Chapter 3 for a complete list of active gas storage fields.

Records that were on the FCML last year but which were subsequently found to be incorrect are entered on a separate Invalid Field Record List. These records were incorrectly placed on the FCML, possibly when complete information was not available. Field names and codes on the Invalid Field Record List should not be used in DOE filings with the indicated State and county. Note, however, that the identified field name and field name code may still be valid for a different State/county combination.

General Field Naming Conventions

Field name spellings in the FCML reflect a number of conventions and conditions. In most instances, the 26-character maximum-length field name reflects the conventions imposed by the data block length on DOE forms and by the field naming authority, usually the State oil and gas regulatory agency. Table 1 lists the field naming authorities, who are also responsible for identifying fields or portions of a field, such as a well, lease, block, unit, or section. In the absence of a State authority, field names that have come into general acceptance in an area may be listed. In the Appalachian Region, field area names are often used. Chapter 2 provides details of the EIA field naming convention.

Table 1. List of Authorities on Oil and Gas Field Nomenclature

State	Naming Authority	State	Naming Authority
Alabama	State Oil and Gas Board of Alabama	Nebraska	Nebraska Oil and Gas Conservation Commission
Alaska	Alaska Oil and Gas Conservation Commission	Nevada	Nevada Department of Conservation and Natural Resources, Division of Mineral Resources
Arizona	Arizona Oil and Gas Conservation Commission	New Mexico	New Mexico Energy Minerals and Natural Resources Department, Oil Conservation Division
Arkansas	Arkansas Oil and Gas Commission	New York	New York Department of Environmental Conservation, Division of Mineral Resources
California	California Department of Conservation, Division of Oil and Gas	North Dakota	North Dakota Geological Survey
Colorado	Colorado Department of Natural Resources, Oil and Gas Conservation Commission	Ohio	Ohio Department of Natural Resources, Division of Oil and Gas
Florida	Florida Department of Natural Resources, Bureau of Geology, Oil and Gas Administration	Oklahoma	Mid-Continent Oil and Gas Association, Oklahoma Nomenclature Committee
Illinois	Illinois Department of Energy and Natural Resources, State Geological Survey	Oregon	Oregon Department of Geology and Minerals Industries, Division of Oil and Gas Geology
Indiana	Indiana Department of Natural Resources, Geological Survey, Petroleum Section	Pennsylvania	Pennsylvania Department of Environmental Resources, Bureau of Topographic and Geologic Survey
Iowa	Iowa Geologic Survey	South Dakota	Department of Environment and Natural Resources
Kansas	Kansas Geological Survey	Tennessee	Tennessee Department of Conservation, Division of Geology
Kentucky	Kentucky Geological Survey	Texas	Railroad Commission of Texas, Oil & Gas Division
Louisiana	Louisiana Department of Natural Resources, Office of Conservation	Utah	Utah Field Names Advisory Committee, Oil, Gas and Mining Division, Department of Natural Resources
Maryland	Maryland Geological Survey	Virginia	Department of Mines, Minerals and Energy, Oil and Gas Division
Michigan	Michigan Department of Natural Resources, Geological Survey Division	Washington	Oil and Gas Conservation Committee
Minnesota	Minnesota Department of Natural Resources, Minnesota Geological Survey, Division of Waters	West Virginia	West Virginia Geological and Economic Survey
Mississippi	Mississippi State Oil and Gas Board	Wyoming	Field Name Advisory Committee, Wyoming Oil and Gas Conservation Commission
Missouri	Missouri Department of Natural Resources, Division of Geology and Land Survey	Federal Offshore	U.S. Department of the Interior, Minerals Management Service
Montana	Montana Department of Natural Resources and Conservation, Oil and Gas Conservation Division		

Source: Energy Information Administration, Office of Oil and Gas.

2. Methodology for Field Code Assignments

Purpose

The purpose of the Field Code Master List (FCML) effort is to provide the Energy Information Administration (EIA) and others with standardized field name spellings and associated codes for all crude oil and natural gas fields throughout the United States. The names and codes are compiled during the research phase on a computerized Field Code Master File (FCMF), which is updated periodically as new information on oil and gas fields is obtained and processed by EIA. The published and electronic versions of the *Oil and Gas Field Code Master List* are derived from the FCMF. The first edition of the Master List was published by EIA in December 1982.

General System Overview

Figure 1 presents a flow chart of the activities necessary to process new field information. All new field data received by EIA goes through this cycle. The new information generally is obtained directly from reports produced by the various State and Federal field naming authorities.

The system also incorporates a Field Code Working File (FCWF) for the development and verification of new field information. The FCWF is updated as information about the field is obtained. Periodically all fully resolved records are extracted from the FCWF and moved to the FCMF. Once this FCMF “update” is completed, the resolved records are deleted from the FCWF. At publication time, the updated FCMF is divided into its primary components, the Field Code Master List and the Invalid Field Records List.

Field Information Research

Geologists and petroleum engineers are responsible for supervising research and final resolution of field information. Listings of the FCWF can be produced by region for review. There are several possible explanations why field information under review is not already listed on the FCMF. This could reflect the following:

- A relatively recent oil or gas field discovery
- A recently discovered extension of an old field into a new county or State
- An alias used for the official name
- An error exists in the reported information.

The official recognition of a new field discovery by a State or Federal field naming authority is a prerequisite for the assignment of an official EIA field code. Table 1 on page 4 lists these naming authorities. Information regarding State recognition is obtained through official State publications and computer tapes, or through other contact with the State agencies.

If the field name in question has not been officially recognized, several sources of information exist for further investigation into the third and fourth possibilities listed above. These include:

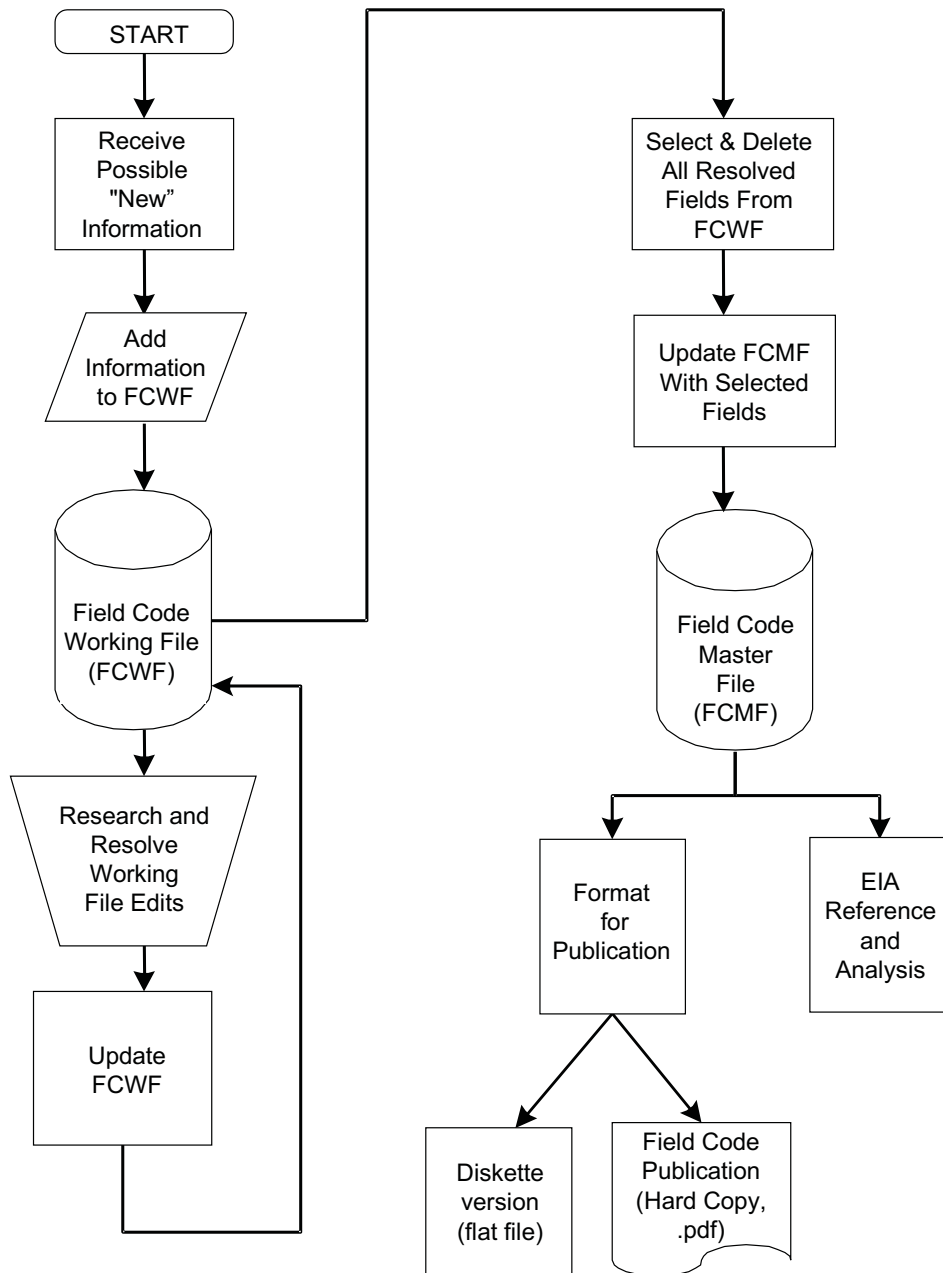
- Analysis of State data files (the Texas and New Mexico files, for example, contain detailed information for each field and operator)
- Review of oil and gas industry publications and computerized data bases
- Telephone contact with the source of the information.

State Source Review Procedures

State sources provide most of the field names. As State publications are released they are routinely reviewed. The information regarding new fields is compared to the information on the FCMF. If the FCMF does not contain the new field, the field name and associated information are placed on the Working File. Subsequent to adding batches of records to the Working File, edit check reports are returned to the analyst that identify missing, inconsistent, or duplicative information on the Working File. The analyst then provides update transactions to correct the problems as appropriate, and a field code is assigned. Periodically, a supervisory analyst reviews those Working File records in which error-edits have been resolved for consistency of assigned field names and field codes with the EIA standards. Then the resolved records are moved to the Master File.

The quality and quantity of information available through the State publications varies. Some States publish new field information relatively frequently (*e.g.*, monthly) in a format that is easily reviewed for incorporation into the FCMF. Routine processing of State sources begins with these publications. Additional State publications, such as State geological papers, are also included in these routine reviews. Periodically, all FCMF records for a State are compared to the most recent State publication.

Figure 1. Field Code Processing Flow Chart



Source: Energy Information Administration, Office of Oil and Gas

Some States do not publish field information, or the field information is not carried in the latest publication but in a previous one. In an overall review of the FCMF, when a particular field is not found in any available State publication, the source NISP (not in State publication) is coded into the source section of the FCMF. When an earlier State source reports “No Production”, “No Reports”, or some similar remark for one or more years, and does not show the field in subsequent sources, the field is still considered to be official, whether it is presently producing or not. When a field is found in an older State source in combination with, or in subordination to, another field name, the State is contacted and asked to clarify the status of the field. This research resolves most of the NISP records, allowing them to be finally categorized as a master field record (with a field naming authority source), as an alias field record, or as an invalid field record. Certain field records, representing field names assigned by non-field naming authority publications that were coded prior to initiation of production in a field, and were subsequently abandoned without recorded production, have been classified as invalid.

Assigning New Field Code Numbers

A sequential listing of unused field code numbers is referenced in assigning new 6-digit field name codes. For field names that are already in use, either in another State or in a different section of the same State, the same code can be assigned to the new field entry. When the field name is completely new, the first available code (numerically lowest) is assigned and is therefore linked with the field name regardless of alphabetization, with the following exception: codes 800000-999998 are excluded from sequential code assignments, as they are reserved for offshore Gulf of Mexico fields.

Field Alias Procedures

A field alias is an unofficial name for an oil and gas field. The analyst detecting that a field name should be recorded as an alias name specifies a successor field name. Initially, the successor name is a master field name, but over time, the successor field name might also become an alias name. When that occurs, both unofficial field names are shown in the FCML and both point to the same current field name.

A field alias may reflect the following possibilities:

- An alternate name for the official name
- A field that has been renamed to something else

- A field that has been combined, consolidated, or merged into another field
- A field that has split into two or more new fields and the old name is no longer used.

For the combined or renamed types of aliases, both the official and alias names are on the FCML.

For alternate name aliases, the official name must be on the FCML in all cases. The alias name will be on the FCML in the following cases:

- A representative from the State agency is aware of the alias name as an alternative for the official name
- The alias name was originated on the old Form “FERC 15 “Interstate Pipeline’s Annual Report of Gas Supply” respondent (formerly collected by the Federal Energy Regulatory Commission)
- Two or more operators report the same alias.

An alternate name alias which does not meet one of these three criteria normally would not appear on the FCML.

Field Alias Records That Have Several Official Names

Certain alias field records result from the splitting of a field into two or more fields, with none of the resulting fields using the original field name. For example, Field A was split into three fields: Field B, Field C, and Field D. Fields B, C, and D would be listed as field records on the FCML. Field A would be listed as a field alias record referencing Field B, **but not** Fields C and D, and would show **SPLIT** as its reason for alias. A user desiring the names of the other fields should contact EIA or the field naming authority to obtain the names of the other fields of which Field A was formerly composed.

Fields With More Than One Name Change

The current official name may be the result of several name changes. For instance, in Oklahoma RINGWOOD NE was combined with RINGWOOD NORTH in 1965, and subsequently combined into RINGWOOD in 1966. The listing for RINGWOOD NE would show the correct field name as RINGWOOD. If multiple names were involved, the alias field name record would list only the current (correct) field name. (For example, in Oklahoma, HENNESSEY SE is an alias for HENNESSEY EAST which has since been changed first to DOVER-HENNESSEY and finally to SOONER TREND. The correct name for the alias HENNESSEY SE, HENNESSEY EAST and DOVER-HENNESSEY is SOONER TREND.) Information

on the chain of successive field names may be obtained from the appropriate field naming authority or EIA.

Offshore Code Assignments

Federal Outer Continental Shelf (OCS) fields in areas other than the Gulf of Mexico are given names in the same manner as onshore fields, and are coded with the next sequential code.

Offshore fields in the Gulf of Mexico OCS receive a field name code that is determined by the lease block (or blocks) for which they are named by the Minerals Management Service (MMS). The last three digits of the code are the block number. For instance, East Cameron (offshore area prefix code 824) Block 071, receives the field code of 824071. If several blocks are included in one field, the field code reflects the number of the block for which the field is named. The other blocks included in the field are listed on the FCML as aliases to the official name. When MMS has named two fields with the same basic block number, *i.e.*, Ship Shoal Blk 113 field and Ship Shoal Blk 113A field, the prefix code from an adjacent area for which the block number could not occur is utilized for the latter designated field.

There are cases where a particular OCS lease block contains portions of two or more fields. If one of the fields is named for the block concerned, there will be an entry in the REMARKS section indicating PBI, for "Part of Block In", followed by the field code of the other included field. If the block concerned is only an alias to all the fields involved, the alias type (or reason) code will be set as MULTI to highlight that more than one field is included within the lease block.

Fields in large offshore State domain blocks in the Gulf of Mexico are assigned codes in the manner of offshore Federal fields. Special prefixes, generally unassigned prefixes for area surveys, are used for the small State block fields. A special prefix has been set aside for High Island-State (Texas). This prefix is used only with the small block fields. For State blocks that exceed 999, an unused three-digit prefix ending in 1 is used, such as SOUTH PADRE IS BLK 1068 with code 951068.

Field Naming Conventions

Use of Compass Directions in Field Names

As a general rule, a compass direction used as part of a field name is placed at the end of the name. For example, the field named West Davenport by a State source bears the name

DAVENPORT WEST on the FCML. However, a field named after a known landmark, such as the town of East Davenport, bears the name EAST DAVENPORT on the FCML.

If the field DAVENPORT WEST is then combined with other wells or fields and the word District, or some similar word, is added to the name, the name will appear on the FCML as DAVENPORT WEST DISTRICT. This enables users to distinguish between two fields, one named as a result of forming a district with the DAVENPORT WEST field as its nucleus, *e.g.*, DAVENPORT WEST DISTRICT, and the other which is a new district to the west of DAVENPORT DISTRICT, *e.g.*, DAVENPORT DISTRICT WEST.

Abbreviations are generally not applied to field names provided by the field naming authorities in connection with onshore field names. Exceptions are that non-cardinal compass points, such as NW for Northwest or SE for Southeast, are always abbreviated, and when the name of a combined field has been formed using all the names of the former fields, some abbreviations are applied to fit the name with the 26-character limit. Note, however, that the four cardinal compass points are always spelled out in onshore field names.

Offshore field names in the Gulf of Mexico nearly always consist of an offshore area name and block number specified by the Minerals Management Service (MMS). Example: EAST CAMERON BLOCK 299. Also, the FCML retains the subarea identifiers such as EAST CAMERON *SOUTH ADDITION* BLOCK 299 field. Because this results in field names frequently exceeding the 26-character limit, EIA applies a standard set of abbreviations for its Gulf of Mexico field naming convention:

Block	BLK	South Extension . . .	SX
North Addition . . .	NA	East Extension	EX
South Addition . . .	SA	Island	IS *
East Addition	EA		
West Addition	WA		

* Abbreviated only when the field name exceeds 26 characters.

For example, High Island East Addition South Extension Block A376 is abbreviated HIGH ISLAND EA SX BLK A376.

Special Naming Conventions

Some States regard reservoirs as fields and keep their records on that basis (*e.g.*, Texas and New Mexico). The FCML does not follow the State conventions in these instances. In Texas, for example, State publications list PARKER (PENNSYLVANIAN) and PARKER (WOLFCAMP) as

distinct fields. But PARKER is actually the name of the field using the EIA definition, and PENNSYLVANIAN and WOLFCAMP are the names of reservoirs in the field. The FCML lists only PARKER.

The MMS quarterly publication *OCS Operations Field Directory, Gulf of Mexico OCS Region* is the primary source for Federal offshore fields in the Gulf of Mexico. This publication and the MMS computer file on which it is based do not use subarea identifiers such as the *SOUTH ADDITION*, although maps of the region still carry these subareas. For example, whereas the MMS carries the name WEST CAMERON BLOCK 617, the FCML carries the field name as WEST CAMERON SA BLK 617, where SA is the abbreviation for SOUTH ADDITION.

Reused Field Names

Some States occasionally reuse field names in areas other than the original field location. This situation is handled on the FCML by indicating (OLD) and (NEW) after the field name, with each being assigned a different field code.

Invalid Field Record Procedures

Field records are removed from the FCML when they are found to be incorrect for one of the following reasons:

- The field name as it appears was never approved by the relevant naming authority; *i.e.*, it could have been a misspelled field name or the name of a producing unit, well, lease or offshore platform.
- County or State location data are incorrect.
- Two separate field codes were assigned to the same field name.

When research on a **NISP** field record determines that one of those reasons applies to a field or field alias record, the record type is changed to **INVALID**. Invalid field records appear in the Invalid Field Record List Updates section of the FCML publication for the year in which they have been designated **INVALID**. They will not appear in subsequent years. A cumulative list of **INVALID** records accompanies the electronic version of the FCML.

3. User's Guide

Field Code Master List

Entries in the Oil and Gas Field Code Master List (FCML) are sorted alphabetically by State and alphabetically by field name within a State. When a field occurs in more than one county or, more accurately, when a field name is used in more than one county, the field is shown listed in each county. Fields that occur in multiple States are listed in each State. Fields in the Federal Offshore are listed separately, appearing after Wyoming.

An example page layout is presented in Figure 2 on page 14. Each master field record occupies one line except for records accompanied by a "Remark", which appears on a second line. Each alias field record occupies two lines. A brief description of each data item follows.

Master Field Record

Item 1, FIELD CODE. The six-digit field name code assigned to this field name.

Item 2, FIELD NAME. The field name (26-character limit).

Item 3, STATE POSTAL ABBREVIATION AND STATE SUBDIVISION CODE. The four-character code indicating the State and State subdivision. The first two positions are the 2-letter State postal abbreviation. The last two positions represent an EIA two-digit subdivision code, used only in Alaska, California, Louisiana, New Mexico, Texas, and in offshore areas to designate State and Federal waters. Table 2 on page 15 presents the State and subdivision codes. Figures 4 through 8, at the end of the Users' Guide, present maps of the five States for which onshore subdivision codes apply.

Item 4, COUNTY CODE. The three-character code for the county or parish. For all States except Alaska this is the Federal Information Processing Standards (FIPS) county code, as presented in FIPS publication 6-3 dated December 15, 1979, and its amendments. For Alaska, the FCML uses the U.S. Geological Survey 1° x 3° quadrangles in lieu of counties. The American Petroleum Institute has produced and assigned three-digit pseudo-county codes for each quadrangle, and the FCML uses these codes. Table 3 on Page 16 lists the Alaska quadrangle names and pseudo-county codes. For State and Federal offshore areas, the following county codes are defined: Offshore-State, 990; Offshore-Federal, 995; Offshore-General, 999.

Item 5, COUNTY NAME. The county or parish name (23-character limit) as defined in FIPS publication 6-3 for all State onshore areas except Alaska. For Alaska, the FCML uses names associated with the USGS 1° x 3° quadrangles. If the field is in an offshore area, see the list at the end of Item 4 above.

Item 6, FIELD DISCOVERY YEAR. The four-digit year of first discovery of oil or gas in this field, if it is known. In the case of combined fields, this is the earliest date among the formerly separate fields.

Item 7, FIELD TYPE. A three-character block giving the type of hydrocarbon found in the field using the symbols defined below.

Symbol	Meaning of Symbol
ONA	Oil, nonassociated gas, and associated-dissolved gas are present.
ON	Oil and nonassociated gas present; associated-dissolved gas absent.
N	Nonassociated gas present; oil and associated-dissolved gas absent.
O	Oil present; nonassociated gas and associated-dissolved gas absent.
OA	Oil and associated-dissolved gas present; nonassociated gas absent.
Blank	Type of hydrocarbon is unknown.

Item 8, REMARKS. This is a 23-character entry specifying an attribute of the field. Common remarks are:

AKA	Field is also called by another name, <i>i.e.</i> , Also Known As. The year (YY) it became known as this field also may shown (AKA JOHN SMITH 71).
COMB	Field combined with another field. The year (YY) also may be shown after the combined field code (COMB 123456 78).
LBI	Although listed in State offshore, this field and block are located Landward of the Barrier Islands (see BRETON SOUND BLK 18).
PBI	Used when referring to offshore blocks. Part of Block In will reference another offshore field code (PBI 921300) in which a portion of this block is included (<i>i.e.</i> , portions of this block occur in two different fields).

STOR Field used to store natural gas or it is a DOE strategic oil reserve. The storage field will be for gas unless the REMARKS section includes an entry such as DOE OIL. The year (YY) it was designated a storage field is shown in parentheses following the STOR label (STOR (69) AQF). AQF is used in conjunction with STOR to signify an aquifer gas storage field. Similarly, SALT signifies a storage field developed in a salt formation. ABD signifies the abandonment of storage operations.

UNIT An area made up of a group of leases (either State or Federal). It may or may not include a field and it may be composed of one or more fields.

Alias Field Record

Item 1, ALIAS FIELD CODE. The six-digit field name code assigned to this alias field name, printed in *italics*.

Item 2, ALIAS FIELD NAME. The alias field name (26-character limit), printed in *italics*.

Item 3, STATE POSTAL ABBREVIATION and STATE SUBDIVISION CODE. Same as Master Field Record, *Item 3*.

Item 4, COUNTY CODE. Same as Master Field Record, *Item 4*.

Item 5, COUNTY NAME. Same as Master Field Record, *Item 5*.

Item 6, CROSS-REFERENCE. This is the identification of the master field code and field name *which should be used in place of the alias name listed in Item 2 of this record*. This item consists of the label "Alias For:" followed by the correct six-digit field name code and the correct (*i.e.*, current) field name printed in **bold** type.

Item 7, ALIAS TYPE. The code indicating type of alias (five-character limit). It is present only for alias fields. The types of alias codes are:

ALTER This field name is an alternative for the official field name. The correct name and code follow "Alias For:".

BLOCK This offshore field extends into more than one offshore block. This offshore block name is not the one for which the field is named. The block for which the field is named follows "Alias For:".

COMB This field has been combined with another field which is listed after "Alias For:".

MULTI This offshore lease block has portions of two or more fields in it. In the FCML, the record is listed

once for each field to which it is aliased so that appropriate cross reference is made.

RENAM This field has been renamed. The new name follows "Alias For:".

SPLIT This field has been split into two or more fields, none of which retains this name. One of the new fields is listed after "Alias For:". Contact EIA for the additional fields and information relating to this alias field.

Field Code Index

In the Field Code Index, the field codes, State abbreviations, and associated field names are listed in ascending field code order. If a field name is used in more than one State, the names are sorted in alphabetic, State abbreviation order. All master and alias field names can be determined if their field code is known.

The field codes are arranged in four columns per page, as shown in Figure 3 on page 17. As the six-digit field code relates directly to the particular field name, there is only one listing in this section per State/field code combination irrespective of the number of counties within that State in which it occurs.

The Index is intended for quick reference only. All detailed information is included in the Oil and Gas Field Code Master List section. The Field Code Index does not appear in *Oil and Gas Field Code Master List Updates*.

Coalbed Methane Field List

A dramatic rise in coalbed methane's share of natural gas production has heightened interest in those fields with coalbed methane potential. In Table 4 on page 18, Coalbed Methane Fields, the field name, field code, county code and name, and State are given for those coalbed methane fields currently productive or with drilling activity.

Active Gas Storage Fields

Gas storage fields have been developed in many States. Many of them were developed in existing oil and/or gas fields. All active gas storage field names in use by field naming authorities are listed in Table 5 on page 20. In certain States, the storage portion of a field or pool has been given a different name. In this case, the storage field name is carried on the FCML as an alias to the official field name. The storage field names that are aliases are listed in both Table 5

and the FCML in *italics*. These alias field names may only be used in filing Form EIA-191, "Monthly Underground Gas Storage Report".

Fields Located in Multiple Jurisdictions

Table 6, Fields Located in Multiple Jurisdictions, on page 25, indicates those oil and/or gas fields which cross State boundaries. In developing the summary statistics on page 1, a field is only counted once, no matter how many counties or States it occurs in.

Outer Continental Shelf Planning Areas

Gulf of Mexico Outer Continental Shelf statistics published by the Minerals Management Service (MMS) follow the boundary lines of the Western, Central, and Eastern MMS Planning Areas, shown respectively in Figures 9, 10, and 11. In order that reports developed from the EIA publication *U.S. Crude Oil, Natural Gas, and Natural Gas Liquids Reserves* track reporting by the MMS, fields currently found in either the Garden Banks or Keathley Canyon leasing areas are listed in the FCML under Texas Federal Offshore, rather than under Louisiana-South Federal Offshore.

The following listing shows the page on which the first field in a State or Federal Offshore area is found in the Oil and Gas Field Code Master List section of this publication.

First Field In State	On Page	First Field In State	On Page	First Field In State	On Page	First Field In State	On Page
Alabama	40	Kansas	65	Nevada	146	Texas	205
Alaska	42	Kentucky	103	New Mexico	146	Utah	305
Arizona	42	Louisiana	114	New York	152	Virginia	307
Arkansas	42	Maryland	125	North Dakota	154	Washington	307
California	45	Michigan	125	Ohio	157	West Virginia	307
Colorado	47	Minnesota	134	Oklahoma	165	Wyoming	311
Florida	54	Mississippi	134	Oregon	199	F.O.-California	319
Illinois	54	Missouri	138	Pennsylvania	199	F.O.-Louisiana	319
Indiana	60	Montana	139	South Dakota	204	F.O.-Other Gulf	335
Iowa	65	Nebraska	142	Tennessee	204	F.O.-Texas	336

Table 2. State Abbreviations and Geographic Subdivision Codes

State Name and Geographic Subdivisions	State Abbreviation	Subdivision Code	State Name and Geographic Subdivisions	State Abbreviation	Subdivision Code
Alabama-Onshore	AL	—	Nebraska	NE	—
Alabama-State Offshore	AL	05	Nevada	NV	—
Alaska-North Onshore and Offshore	AK	50	New Hampshire	NH	—
Alaska-South Onshore	AK	10	New Jersey	NJ	—
Alaska-South State Offshore	AK	05	New Mexico-East	NM	10
Alaska-South Federal Offshore	AK	00	New Mexico-West	NM	50
Arizona	AZ	—	New York	NY	—
Arkansas	AR	—	North Carolina	NC	—
California-Coastal Region Onshore	CA	50	North Dakota	ND	—
California-Los Angeles Basin Onshore	CA	90	Ohio	OH	—
California-San Joaquin Basin Onshore	CA	10	Oklahoma	OK	—
California-State Offshore	CA	05	Oregon	OR	—
California-Federal Offshore	CA	00	Pennsylvania	PA	—
Colorado	CO	—	Rhode Island	RI	—
Connecticut	CT	—	South Carolina	SC	—
Delaware	DE	—	South Dakota	SD	—
District of Columbia	DC	—	Tennessee	TN	—
Florida-Onshore	FL	—	Texas RRC District 1	TX	10
Florida-State Offshore	FL	05	Texas RRC District 2 Onshore	TX	20
Georgia	GA	—	Texas RRC District 3 Onshore	TX	30
Hawaii	HI	—	Texas RRC District 4 Onshore	TX	40
Idaho	ID	—	Texas RRC District 5	TX	50
Illinois	IL	—	Texas RRC District 6	TX	60
Indiana	IN	—	Texas RRC District 7B	TX	70
Iowa	IA	—	Texas RRC District 7C	TX	75
Kansas	KS	—	Texas RRC District 8	TX	80
Kentucky	KY	—	Texas RRC District 8A	TX	85
Louisiana-North	LA	50	Texas RRC District 9	TX	90
Louisiana-South Onshore	LA	10	Texas RRC District 10	TX	95
Louisiana-South State Offshore	LA	05	Texas-State Offshore	TX	05
Louisiana-South Federal Offshore	LA	00	Texas-Federal Offshore	TX	00
Maine	ME	—	Utah	UT	—
Maryland	MD	—	Vermont	VT	—
Massachusetts	MA	—	Virginia	VA	—
Michigan	MI	—	Washington	WA	—
Minnesota	MN	—	West Virginia	WV	—
Mississippi-Onshore	MS	—	Wisconsin	WI	—
Mississippi-State Offshore	MS	05	Wyoming	WY	—
Missouri	MO	—	Atlantic Coast-Federal Offshore	AC	00
Montana	MT	—	Other Gulf-Federal Offshore	OG	00

— = Not applicable.

Sources: National Bureau of Standards, U.S. Department of Commerce, FIPS PUB 6-3, *Counties and County Equivalents of the States of the United States and the District of Columbia*. Energy Information Administration, Office of Oil and Gas.

Table 3. U.S. Geological Survey Alaska Quadrangles and Associated Codes

Quadrangle	Quad Code	Quadrangle	Quad Code	Quadrangle	Quad Code	Quadrangle	Quad Code
Adak	001	Dillingham	077	Marshall	157	Seward	233
Afognak	003	Dixon Entrance	079	McCarthy	159	Shishmaref	235
Ambler River	005	Eagle	081	McGrath	161	Shungnak	237
Amukta	007	Fairbanks	083	Meade River	163	Simeonof Island	239
Anchorage	009	False Pass	087	Medfra	165	Sitka	241
Arctic	011	Flaxman Island	089	Melozitna	167	Skagway	243
Atka	013	Fort Yukon	091	Middleton Island	169	Sleetmute	245
Atlin	015	Cold Bay	093	Misheguk Mtn	171	Solomon	247
Attu	017	Gareloi Island	095	Mt Fairweather	085	St Lawrence	253
Baird Inlet	019	Goodnews	097	Mt Hayes	173	St Matthew	249
Baird Mts	021	Gulkana	099	Mt Katmai	175	St Michael	255
Barrow	023	Hagemeister Island	101	Mt McKinley	177	Stepovak Bay	251
Barter Island	025	Harrison Bay	103	Mt Michelson	179	Sumdum	257
Beaver	027	Healy	105	Mt St Elias	181	Survey Pass	259
Beechey Point	029	Holy Cross	107	Nabesna	183	Sutwik Island	261
Bendeleben	031	Hooper Bay	109	Naknek	185	Table Mtn	263
Bering Glacier	033	Howard Pass	111	Noatak	187	Taku River	265
Bethel	035	Hughes	113	Nome	189	Talkeetna	267
Bettles	037	Icy Bay	115	Norton Bay	191	Talkeetna Mts	269
Big Delta	039	Iditarod	117	Nulato	193	Tanacross	271
Black	041	Ikpiqpuq River	119	Nunivak Island	195	Tanana	273
Black River	043	Iliamna	121	Nushagak Bay	197	Taylor Mts	275
Blying Sound	045	Juneau	123	Ophir	199	Teller	277
Bradfield Canal	047	Kaguyak	125	Petersburg	201	Teshekpuk	279
Bristol Bay	049	Kantishna River	127	Philip Smith Mts	203	Trinity Islands	281
Candle	051	Karluk	129	Point Hope	205	Tyonek	283
Cape Mendenhall	053	Kateel River	131	Point Lay	207	Ugashik	285
Chandalar	055	Kenai	133	Port Alexander	209	Umiat	287
Chandler Lake	057	Ketchikan	135	Port Moller	211	Umnak	289
Charley River	059	Killik River	137	Pribilof Islands	213	Unalakleet	291
Chignik	061	Kiska	139	Prince Rupert	215	Unalaska	293
Christian	063	Kodiak	141	Rat Islands	217	Unimak	295
Circle	065	Kotzebue	143	Ruby	219	Utukok River	297
Cold Bay	093	Kuskokwim Bay	145	Russian Mission	221	Valdez	299
Coleen	067	Kwiguk	147	Sagavanirktok	223	Wainwright	301
Cordova	069	Lake Clark	149	Samalga Island	225	Wiseman	303
Craig	071	Lime Hills	151	Seguam	227	Yakutat	305
De Long Mts	073	Livengood	153	Selawik	229		
Demarcation Point	075	Lookout Ridge	155	Seldovia	231		

Note: The State of Alaska does not have counties that can be used for field identification. Areas identified by U. S. Geological Survey quadrangles have been assigned codes by the American Petroleum Institute for use as pseudo-county codes.

Source: The API Well Number and Standard State and County Numeric Codes Including Offshore Waters. API Bulletin D12A, January 1979. American Petroleum Institute, Washington, DC.

Figure 3. Sample of a Field Code Index Page

Field Code	State	Field Name	Field Code	State	Field Name	Field Code	State	Field Name	Field Code	State	Field Name
000100	KS	Beauchamp NE	000294	TX	Arrowhead Ranch	000405	TX	Bender North	000507	TX	Clay-Ray West
000101	CO	Boulder Valley	000295	NM	Draper Mill	000406	TX	Bennett-Williams	000508	TX	Clemens Dome
000102	TX	Bethesda SW	000296	TX	Mujeres Creek	000407	TX	Bent Tree	000509	TX	Cleveland SE
000103	TX	Decatur East	000297	OK	Hammon NE	000408	TX	Berkeley	000510	TX	Clevenger
000104	TX	Gentry-Perkins	000298	OK	Berlin SE	000409	TX	Bernecker South	000511	OK	Cлочchief NW
000105	TX	Peaster SE	000299	TX	Dewey Lake	000410	TX	Berwick East	000512	TX	Cmc
000106	TX	Weillan	000300	OK	Strong City East	000411	TX	Betlin	000513	TX	Cockatoo
000107	TX	Three Rivers	000303	TX	P C X	000412	TX	Bettie	000514	TX	Cockburn
000108	TX	Eddie	000308	TX	Broussard South	000413	TX	Betty JO	000515	TX	Coleman South
000109	AR	Boyce Lake	000314	TX	Allison-Britt	000414	WY	Big Dry Creek	000516	TX	College Hills
000110	AR	Rondo	000315	TX	Billy Rose	000415	TX	Big Mac	000517	OK	Colony NE
000111	KS	Spearville	000316	TX	Black Horse Dome	000416	WY	Big Mac	000518	OK	Columbia Townsite
000112	CO	Abarr	000317	TX	Boker	000417	WY	Big Piney P Sand	000519	TX	Command Energy
000113	CO	Dapper	000318	TX	Candice	000417	WY	Big Piney Shallow	000520	TX	Content
000114	CO	Feral	000319	TX	Gem-Dandy	000419	TX	Bilco	000521	TX	Cook Ranch West
000115	CO	Longknife	000320	TX	Kelton NW	000420	TX	Bill Echols	000522	TX	Coot
000116	TX	Deadwood West	000321	TX	Killibrew	000421	TX	Billie-Nancy	000523	TX	Cornelius
000117	TX	Sta	000322	TX	Lambert 2	000422	TX	Blanket	000524	TX	Cornerstone
000118	TX	Karie	000323	TX	Lambert 3	000423	TX	Blaton	000525	WY	Corney
000119	TX	Wesley Sykes	000325	TX	Mcmordie Ranch	000424	TX	Bo Scan	000526	TX	Corolla
000120	TX	Fuego Navidad	000326	TX	Mo-Tex	000425	TX	Bobbie Gerald	000527	TX	Corvo
000121	TX	Chapa West	000327	TX	Palalla	000426	TX	Bobill	000528	TX	Cottonwood SE
000122	TX	Clay West South	000328	TX	Red Deer Creek South	000427	TX	Bogen	000529	ND	Coulee
000123	TX	La Perla Ranch East	000329	TX	Ricks	000428	TX	Borock	000529	WY	Coulee
000124	OK	Dempsey SE	000330	TX	Shoenail	000430	TX	Bowne North	000530	OK	Council Creek North
000125	OK	Dill City West	000331	TX	Shoenail West	000431	TX	Boyd SW	000531	OK	Courtney NE
000129	NM	Bilbrey Basin	000332	TX	Silver Creek NE	000432	OK	Boynton NW	000532	TX	Cowtrap North
000130	NM	Lake Mcmillan East	000333	TX	Texas Hugoton	000433	OK	Bradley District East	000533	TX	Cowtrap South
000131	NM	Eunice SW	000334	TX	Washita NW	000434	TX	Brand-T	000534	WY	Craven Creek
000132	TX	Cauthorn Ranch North	000335	TX	Wheeler North	000435	TX	Branson North	000535	TX	Cree
000138	TX	Orange Blossom	000336	TX	Allen Hill	000436	TX	Brazell	000536	TX	Crosby North
000139	TX	Vickburg	000337	CO	Gopher	000437	OK	Breathwaite	000537	OK	Cruce District
000140	CO	Bronco Flats	000337	NM	Gopher	000438	OK	Breathwaite West	000538	OK	Cruce West
000142	TX	Longview North	000338	TX	Bald Eagle	000439	TX	Bradshaw East	000539	TX	Cullen
000143	TX	Randon East	000339	AL	Studhorse Creek	000440	TX	Breckenridge SE	000540	TX	Cullers & Bailey
000145	LA	Raccourci Island	000340	TX	Bratton	000441	TX	Brenda	000541	TX	Curley South
000146	TX	Barranca	000342	TX	Ergon	000442	WY	Bridge Draw	000543	TX	D-C 176
000147	TX	Brushy Creek South	000343	TX	Hemphill-Hoover	000443	TX	Bridgeport East	000544	TX	D-W-C
000148	TX	Chicolete	000344	TX	Hermann	000444	WY	Bridger Trail	000545	TX	Dalton Bend
000151	TX	Rugeley SW	000345	TX	Huntoon SW	000445	TX	Briscoe Canal	000546	TX	Damuth
000153	TX	Deweyville West	000348	CO	Granny	000446	TX	Brittany SE	000547	TX	De Leon North
000154	TX	Old Waverly South	000348	TX	Granny	000447	TX	Brockfield	000548	TX	Dean Lake
000155	PA	Scottdale	000349	MT	Four Buttes	000448	TX	Brockman	000549	TX	Debby J
000156	KY	Hyden West	000350	MT	Pine East	000449	TX	Brownlee North	000550	TX	Deco
000157	KS	Nettleton	000351	TX	A & C	000450	OK	Broxton North	000551	TX	Dee Cee
000157	MS	Nettleton	000352	TX	A O Q	000451	TX	Buckeye West	000553	TX	Dennis SW
000158	MS	Cowpenna Creek	000353	TX	Abilene Centennial	000452	WY	Buckhorn Canyon	000554	TX	Ddsdeмона M
000159	TX	Rusk SE	000354	TX	Ace-Jones	000453	TX	Burkett South	000555	OK	Devol SE
000160	TX	Swanson Landing	000355	TX	Ace-Tiner	000454	TX	Burkeville	000556	OK	Dibble SW
000161	CO	Superior	000356	MO	Ackerman	000455	TX	Burnes	000557	TX	Dickey North
000163	KS	Wulf Hollow	000356	TX	Ackerman	000456	TX	Burney	000558	OK	Dill City South
000164	KS	Carver-Robbins West	000357	TX	Adair Creek	000457	IL	Burnt Prairie SW	000559	WY	Dillinger Ranch East
000165	KS	Winter	000358	TX	Admiral	000458	OK	Butler-Custer SW	000560	WY	Dilts
000165	TX	Winter	000359	TX	Agape	000459	ND	Butte	000561	TX	Dimpkin
000168	TX	Riley East	000360	TX	Agua Dulce SW	000459	WY	Butte	000562	TX	Diverse
000171	WY	Treasure Unit	000361	TX	Al-Vinc	000460	TX	Buttram	000563	TX	Dixon-Lawlis
000172	WY	Stock Tank	000362	TX	Alberta	000461	TX	C-M	000564	TX	Dobbin
000174	LA	Fox Lake	000363	TX	Alejandrenas	000462	TX	Calabria	000565	TX	Dodgion
000175	MT	Gilford North	000364	TX	Alexander South	000463	TX	Calallen SE	000566	WY	Dogie
000210	NM	Springs	000365	TX	Alice East	000464	TX	Calallen SW	000567	OK	Dolberg District
000212	TX	Phig Pin	000366	TX	Allen-Six	000465	TX	Caldwell NE	000568	TX	Doty NW
000213	NM	Dog Town Draw	000367	TX	Alligator Lake North	000466	TX	Callaghan North	000569	TX	Double A Wells
000214	NM	Big Sinks	000368	TX	Amargosa West	000467	TX	Callahan NE	000570	WY	Dry Piney Unit
000215	WY	Chapman Draw	000369	TX	Ambassador SE	000468	TX	Camp Colorado South	000571	WY	Duck Nest Creek
000218	WY	Nickey	000370	TX	Andress	000469	TX	Camp Hulén West	000572	TX	Duncan Slough SE
000219	WY	Osborne Draw	000371	TX	Ann T	000470	WY	Campbell Ridge	000573	TX	Dynamo
000220	WY	Tepee Flats	000372	TX	Anna Mae	000471	OK	Canute East	000574	IL	Eagarville East
000221	WY	Wild Hare Gulch	000373	TX	Aqua Pozo	000472	TX	Caprice	000575	WY	Eagle Rock
000222	TX	Science	000374	TX	Ark-La-Tex	000473	TX	Carbondate East	000576	OK	Eakly South
000223	TX	Sallie-Cisco	000375	TX	Arlene North	000473	TX	Carm	000577	TX	Eason East
000224	NM	Palmillo East	000376	TX	Armstrong NW	000475	TX	Carn	000578	OK	Eason North
000225	NM	Lea NE	000378	WY	Art Creek	000476	OK	Carnegie NE	000579	TX	Easter South
000228	TX	Izod	000379	TX	Arteburn	000477	OK	Caston East	000580	TX	Easterling
000229	WY	Adobe Town	000380	WY	Arvada	000478	TX	Cat	000581	TX	Edco
000230	OK	Nelagoney NE	000381	TX	Ascot	000479	TX	Cattail Hollow	000582	OK	Edgewood-Garfield SW
000233	OK	Ponca City Townsite	000382	TX	Ashtola	000480	TX	Catto	000583	TX	Edwin
000235	KS	Kumberg SE	000383	TX	Astin	000481	TX	Cavallo West	000584	TX	Egypt NW
000236	SD	Cady Creek	000384	TX	Atkinson Island	000482	TX	Cayman	000585	TX	Embassy
000238	TX	Napoco NW	000385	TX	Audabon	000483	TX	Cecile South	000586	TX	Emblem North
000239	WY	Painter Reservoir East	000386	OH	Aurora North	000484	TX	Celery	000587	WY	Emigrant Trail
000240	WY	Henry Folk	000386	TX	Aurora North	000485	OK	Centerpoint SW	000588	TX	Ennis
000241	TX	Mclaw	000387	TX	Awtry	000486	TX	Chapel Hill NE	000589	OK	Eola NW
000243	TX	Peery SE	000388	TX	B K	000487	TX	Chapel Hill SW	000590	WY	Essex Mountain
000244	NM	Rock Spur	000389	TX	B R A	000488	TX	Char-Jan	000591	TX	Evergreen North
000248	KS	Crooked Creek West	000390	TX	B & N	000489	TX	Charles Copeland	000592	TX	F H Mcnabb
000249	KS	Eagle Canyon	000391	TX	Bag	000490	OK	Cheek NW	000593	OK	Fairfax NW
000258	TX	Dacey South	000392	WY	Baggs South Ext	000491	TX	Cheek South	000594	OK	Falls NW
000260	TX	Armsay	000393	TX	Bailey West	000492	TX	Cheney Memorial	000595	TX	Fant
000261	TX	Koichi	000394	TX	Baldwin West	000493	TX	Cherrington	000596	WY	Fd
000263	PA	Heathville	000395	TX	Bandera East	000494	OK	Cheyarha	000597	TX	Felicia
000264	KY	Claymour	000396	TX	Baron Reef	000496	TX	Chick Bend	000598	WY	Fetter
000266	TX	Chama	000397	TX	Bartons Chapel NW	000497	TX	Childers	000599	TX	Feudalute
000269	LA	Sacksonia	000398	TX	Bastrop Bay East	000498	OK	Chiles Dome SE	000600	WY	Fiddler Creek East
000278	TX	Hour	000399	WY	Bay Creek	000499	TX	Chillicothe NE	000601	WY	Flat Top East
000287	KS	Mcollum South	000400	TX	Bear Canyon	000500	LA	China SE	000602	OK	Florence SW
000288	OK	White Eagle NW	000401	TX	Ben Bird	000502	TX	China SE			
000291	LA	Comite	000402	TX	Ben Bolt SW	000503	WY	China SE			
000292	TX	Shreikay East	000403	TX	Ben Burgess	000504	OK	Church Hill West			
000293	OK	Hammon East	000404	TX	Ben-W	000506	TX	City			
								Clark Creek West			
								Clay Point South			

Source: Energy Information Administration, Office of Oil and Gas.

Table 4. Coalbed Methane Fields

State and Field Name	Field Code	County Code	County Name	State and Field Name	Field Code	County Code	County Name
Alabama				Parachute	009661	045	Garfield
Big Sandy Creek Coal Degas	013337	125	Tuscaloosa	Pinyon Ridge	014271	103	Rio Blanco
Blue Creek Coal Degas	012124	125	Tuscaloosa	Raton	015810	071	Las Animas
Boone Creek Coal Degas	013341	125	Tuscaloosa	Red Mesa	591452	067	La Plata
Brookwood Coal Degasificat	000311	073	Jefferson	Rulison	618549	045	Garfield
Brookwood Coal Degasificat	000311	125	Tuscaloosa	Shale Ridge South	013929	077	Mesa
Cedar Cove Coal Degas	008416	125	Tuscaloosa	Skinner Ridge	013633	045	Garfield
Deerlick Creek Coal Degas	008478	125	Tuscaloosa	Three Bridges	012076	055	Huerfano
Fairview	233940	075	Lamar	West Side Canal	760277	081	Moffat
Gurnee Coal Degas	013330	007	Bibb	White River	764757	103	Rio Blanco
Gurnee Coal Degas	013330	117	Shelby				
Holt Coal Degasification	003623	125	Tuscaloosa	Illinois			
Little Buck Creek Coal Deg	014254	063	Greene	Eldorado Consol	218392	165	Saline
Little Buck Creek Coal Deg	014254	125	Tuscaloosa	Indiana			
Little Sandy Creek Degas	013172	125	Tuscaloosa	Bicknell	060509	083	Knox
Moundville Coal Degas	013503	063	Greene	Sandford	630765	167	Vigo
Moundville Coal Degas	013503	065	Hale	Sullivan Consol	687396	153	Sullivan
Moundville Coal Degas	013503	125	Tuscaloosa	Kansas			
Oak Grove Coal Degas	003662	073	Jefferson	Brewster	091247	125	Montgomery
Oak Grove Coal Degas	003662	125	Tuscaloosa	Fairmount Townsite	010916	103	Leavenworth
Peterson Coal Degas	008595	125	Tuscaloosa	Frasier	255736	019	Chautauqua
Pleasant Grove Coal Degas	003670	073	Jefferson	Fredonia	256542	205	Wilson
Robinsons Bend Coal Degas	013516	125	Tuscaloosa	Hale-Inge	299507	019	Chautauqua
Scottsville Coal Degas	013800	007	Bibb	Hale-Inge	299507	049	Elk
Taylor Creek Coal Degas	014136	063	Greene	Jefferson-Sycamore	356998	125	Montgomery
Taylor Creek Coal Degas	014136	125	Tuscaloosa	Mound City	488254	107	Linn
Thornton Creek Coal Degas	015246	125	Tuscaloosa	Neodesha	502355	125	Montgomery
White Oak Creek Coal Degas	013106	073	Jefferson	Neodesha	502355	205	Wilson
White Oak Creek Coal Degas	013106	125	Tuscaloosa	Peru-Sedan	551823	019	Chautauqua
White Oak Creek Coal Degas	013106	127	Walker	Sycamore Valley	006462	125	Montgomery
Wolf Creek Coal Degas	013446	125	Tuscaloosa	Sycamore Valley East	008963	125	Montgomery
Colorado				Tyro	724826	125	Montgomery
Apache Canyon	013811	071	Las Animas	Valeda	732170	099	Labette
Bronco Flats	000140	077	Mesa	Wayside-Havana	753309	019	Chautauqua
Buzzard Creek	108313	077	Mesa	Wayside-Havana	753309	125	Montgomery
Coal Gulch	149989	077	Mesa	Kentucky			
Craig	168047	081	Moffat	Sebree Consol	641910	233	Webster
Divide Creek	193533	045	Garfield	New Mexico			
Divide Creek	193533	077	Mesa	Aztec	032800	045	San Juan
Gasaway	267355	045	Garfield	Aztec North	032831	045	San Juan
Grand Valley	284772	045	Garfield	Basin	042233	039	Rio Arriba
Hunters Canyon	339888	077	Mesa	Basin	042233	043	Sandoval
Ignacio-Blanco	343874	007	Archuleta	Basin	042233	045	San Juan
Ignacio-Blanco	343874	067	La Plata				

Table 4. Coalbed Methane Fields (Continued)

State and Field Name	Field Code	County Code	County Name	State and Field Name	Field Code	County Code	County Name
Bisti	066864	045	San Juan	Drunkards Wash	014840	007	Carbon
Blanco	070724	045	San Juan	Virginia			
Blanco South	070848	039	Rio Arriba	Glick	277145	027	Buchanan
Cedar Hill	127962	045	San Juan	Keen Mountain	001394	027	Buchanan
Escrito	227948	039	Rio Arriba	Nora	511254	051	Dickenson
Fulcher-Kutz	259658	045	San Juan	Nora	511254	167	Russell
Harper Hill	306924	045	San Juan	Nora	511254	195	Wise
Jasis Canyon	355315	045	San Juan	Oakwood	518178	027	Buchanan
Kutz	388974	045	San Juan	West Virginia			
Lybrook	435372	045	San Juan	Big Run-Birchfield	063361	103	Wetzel
Mt Nebo	491014	045	San Juan	Wyoming			
Pinon North	557796	045	San Juan	Bone Pile	080017	005	Campbell
San Juan	003683	045	San Juan	Breen	090658	005	Campbell
WAW	002964	045	San Juan	Caballo - Fort Union	015797	005	Campbell
Oklahoma				Clubhouse	010336	005	Campbell
Brooken	094054	121	Pittsburg	Coalmine	014867	005	Campbell
Kinta	380610	121	Pittsburg	Dixon	193998	007	Carbon
Pine Hollow South	556791	121	Pittsburg	Hartzog Draw	308943	005	Campbell
Quinton District	580321	121	Pittsburg	Hawk Point	010459	005	Campbell
Spiro SE	669865	079	Le Flore	Kingsbury Creek	380145	005	Campbell
Wilburton	767826	121	Pittsburg	Lynde	014868	005	Campbell
Pennsylvania				Lynde South	014869	005	Campbell
Blairsville	070166	063	Indiana	Lynde West	014870	005	Campbell
Gump	006205	059	Greene	May Butte	014871	005	Campbell
Lagonda	394515	125	Washington	Maysdorf	455700	005	Campbell
Mayfield	455469	129	Westmoreland	Meadowlark	014872	005	Campbell
New Freeport	503770	059	Greene	Mill-Gillette	474370	005	Campbell
Oakford	517434	129	Westmoreland	Oedekoven	520069	005	Campbell
Waltersburg	007359	051	Fayette	Ranchhouse	014873	005	Campbell
Waynesburg	007266	059	Greene	Rawhide Butte	013282	005	Campbell
Utah				Recluse	589685	005	Campbell
Buzzard Bench	007833	015	Emery	Route 59	014874	005	Campbell
Castlegate	014836	007	Carbon	Wolff	000853	005	Campbell

Table 5. Active Gas Storage Fields

State and Field Name	Field Code	State/ Sub	County Code	County Name	State and Field Name	Field Code	State/ Sub	County Code	County Name
Alabama					Shanghai	647599	IL	131	Mercer
Bay Gas Salt Dome Gsf#1	014887	AL	129	Washington	Shanghai	647599	IL	187	Warren
Mcintosh	460979	AL	129	Washington	St Jacob	624627	IL	119	Madison
Arkansas					Tilden North	708099	IL	163	St Clair
Jethro	358641	AR	047	Franklin	Tilden North	708099	IL	189	Washington
Lavaca Deep	404414	AR	131	Sebastian	Troy Grove	718974	IL	099	La Salle
Watalula	750922	AR	047	Franklin	Tuscola	722733	IL	041	Douglas
White Oak	764509	AR	047	Franklin	Waterloo	751387	IL	133	Monroe
California					Waverly	752720	IL	137	Morgan
Aliso Canyon	010456	CA50	037	Los Angeles	Indiana				
Honor Rancho	330773	CA50	037	Los Angeles	Arney	025507	IN	119	Owen
Kirby Hill	381385	CA10	095	Solano	Dixon	193998	IN	055	Greene
La Goleta	391270	CA50	083	Santa Barbara	<i>Giro East</i>	<i>274025</i>	<i>IN</i>	<i>125</i>	<i>Pike</i>
Los Medanos	427868	CA10	013	Contra Costa	Glendale North	276494	IN	027	Daviess
Lost Hills	428333	CA10	029	Kern	Greensburg	289360	IN	031	Decatur
Mcdonald Island	459290	CA10	077	San Joaquin	Howesville	335454	IN	055	Greene
Montebello	482643	CA90	037	Los Angeles	Huntingburg South	340074	IN	037	Dubois
Playa Del Rey	559845	CA90	037	Los Angeles	Laconia	393595	IN	061	Harrison
Pleasant Creek	559938	CA10	113	Yolo	<i>Lake-of-the-Woods</i>	<i>397408</i>	<i>IN</i>	<i>099</i>	<i>Marshall</i>
Whittier	766462	CA90	037	Los Angeles	Lawrenceburg	405406	IN	029	Dearborn
Colorado					Leesville	408220	IN	093	Lawrence
Asbury Creek	027088	CO	077	Mesa	Lonetree	425140	IN	055	Greene
Flank	243676	CO	009	Baca	<i>Midway</i>	<i>472745</i>	<i>IN</i>	<i>147</i>	<i>Spencer</i>
Fort Morgan	250574	CO	087	Morgan	Midway Consol	472760	IN	147	Spencer
Latigo	403515	CO	005	Arapahoe	Mineral City	476691	IN	055	Greene
Leyden Coal Mine	412715	CO	059	Jefferson	<i>Monroe City</i>	<i>481899</i>	<i>IN</i>	<i>083</i>	<i>Knox</i>
Roundup	616060	CO	087	Morgan	Montezuma	482829	IN	165	Vermillion
Wolf Creek	776236	CO	097	Pitkin	Oaktown (New)	517999	IN	083	Knox
Young	787893	CO	087	Morgan	Oaktown (New)	517999	IN	153	Sullivan
Illinois					Oliver	523975	IN	129	Posey
Ancona	012886	IL	099	La Salle	Royal Center	617083	IN	017	Cass
Ancona	012886	IL	105	Livingston	Royal Center	617083	IN	049	Fulton
Ashmore	028049	IL	023	Clark	Royal Center	617083	IN	131	Pulaski
Ashmore	028049	IL	029	Coles	Simpson Chapel	657104	IN	055	Greene
Centralia	130225	IL	121	Marion	State Line	677538	IN	167	Vigo
Centralia East	130287	IL	121	Marion	Switz City	693201	IN	055	Greene
Cooks Mills Consol	159258	IL	029	Coles	Unionport South	009964	IN	135	Randolph
Cooks Mills Consol	159258	IL	041	Douglas	Unionville	728572	IN	105	Monroe
Corinth	161552	IL	199	Williamson	Westpoint	761207	IN	157	Tiptecanoe
Crab Orchard	167830	IL	199	Williamson	Wilfred	768942	IN	153	Sullivan
Crescent City	169535	IL	075	Iroquois	Wolcott	776143	IN	181	White
Eden	213408	IL	157	Randolph	Wolcott North	009982	IN	181	White
Eden South	012956	IL	157	Randolph	Worthington	779801	IN	055	Greene
Freeburg	256635	IL	163	St Clair	Iowa				
Gillespie-Benld	272765	IL	117	Macoupin	Cairo	112376	IA	115	Louisa
Glasford	275192	IL	143	Peoria	Columbus City	155321	IA	115	Louisa
Herscher	318751	IL	091	Kankakee	Keota	375936	IA	183	Washington
Herscher NW	318782	IL	091	Kankakee	Redfield	592506	IA	049	Dallas
Hillsboro	323394	IL	135	Montgomery	Vincent	739100	IA	091	Humboldt
Hookdale	331052	IL	005	Bond	Vincent	739100	IA	187	Webster
Hudson	336757	IL	113	Mclean	Vincent	739100	IA	197	Wright
Lake Bloomington	395393	IL	113	Mclean	Kansas				
Lexington	412560	IL	113	Mclean	Alden	008441	KS	159	Rice
Lincoln	414351	IL	107	Logan	Boehm	077715	KS	129	Morton
Loudon	009833	IL	051	Fayette	Borchers North	081683	KS	119	Meade
<i>Mahomet</i>	<i>441364</i>	<i>IL</i>	<i>019</i>	<i>Champaign</i>	Brehm	090720	KS	151	Pratt
Manlove	009843	IL	019	Champaign	<i>Buffalo</i>	<i>101276</i>	<i>KS</i>	<i>205</i>	<i>Wilson</i>
Pecatonica	546894	IL	201	Winnebago	<i>Colony</i>	<i>154639</i>	<i>KS</i>	<i>003</i>	<i>Anderson</i>
Pontiac	565100	IL	105	Livingston	Craig-Monticello	168109	KS	091	Johnson
Sciota	639732	IL	109	Mcdonough	Cunningham	174542	KS	095	Kingman
					Cunningham	174542	KS	151	Pratt

Note: Alias field names are in italics.

Table 5. Active Gas Storage Fields (Continued)

State and Field Name	Field Code	State/ Sub	County Code	County Name	State and Field Name	Field Code	State/ Sub	County Code	County Name
Elk City	219074	KS	019	Chautauqua	Napoleonville	498735	LA10	007	Assumption
Elk City	219074	KS	049	Elk	Ruston	620502	LA50	061	Lincoln
Elk City	219074	KS	125	Montgomery	Sorrento	666331	LA10	005	Ascension
Fredonia	256542	KS	205	Wilson	Unionville	728572	LA50	061	Lincoln
Liberty North	413390	KS	125	Montgomery	Unionville	728572	LA50	111	Union
Lyons	436364	KS	159	Rice	Washington	750240	LA10	097	St Landry
<i>Mcclouth</i>	<i>457647</i>	<i>KS</i>	<i>087</i>	<i>Jefferson</i>					
Mclouth	462049	KS	103	Leavenworth	Maryland				
Piqua	558155	KS	001	Allen	Accident	002210	MD	023	Garrett
Piqua	558155	KS	207	Woodson					
Richfield	599559	KS	129	Morton	Michigan				
Welda North	756526	KS	003	Anderson	Austin	030901	MI	107	Mecosta
Welda South	756557	KS	003	Anderson	Belle River Mills	053820	MI	147	St Clair
					Blue Lake 18-28N-5W A	002837	MI	079	Kalkaska
Kentucky					Broomfield Deerfield	074351	MI	073	Isabella
Adair North	003171	KY	091	Hancock	Capac	118576	MI	147	St Clair
Anton	021244	KY	107	Hopkins	Charlton 01-30N-1W	002860	MI	137	Otsego
Barnsley	040094	KY	107	Hopkins	Chester Sec 15	003494	MI	137	Otsego
<i>Bon Harbor</i>	<i>079544</i>	<i>KY</i>	<i>059</i>	<i>Daviess</i>	Cold Springs 12-28N-6W	002922	MI	079	Kalkaska
Canada Mountain	004833	KY	013	Bell	Cold Springs 31-28N-6W	009713	MI	079	Kalkaska
Cecilia	004841	KY	093	Hardin	Coldwater	152252	MI	073	Isabella
Center	129264	KY	009	Barren	Collin	153988	MI	147	St Clair
Center	129264	KY	087	Green	Columbus	155290	MI	147	St Clair
Center	129264	KY	169	Metcalfe	Columbus West	155538	MI	147	St Clair
Crofton East	009721	KY	047	Christian	Cranberry Lake	168233	MI	035	Clare
Dixie	193812	KY	101	Henderson	Cranberry Lake	168233	MI	113	Missaukee
Doe Run	194968	KY	163	Meade	Croton	172387	MI	123	Newaygo
Eagle Creek	210463	KY	081	Grant	Excelsior 06-27N-6W	009735	MI	079	Kalkaska
Eagle Creek	210463	KY	187	Owen	Four Corners	252434	MI	147	St Clair
<i>East Diamond</i>	<i>015820</i>	<i>KY</i>	<i>107</i>	<i>Hopkins</i>	Freeman-Lincoln	256790	MI	035	Clare
Flint Hill Consol	012752	KY	093	Hardin	Goodwell	280385	MI	123	Newaygo
Graham Lake	283842	KY	177	Muhlenberg	Hessen	319123	MI	147	St Clair
Grandview	284927	KY	059	Daviess	Howell	335361	MI	093	Livingston
Greenville	289577	KY	177	Muhlenberg	Ira	347913	MI	147	St Clair
<i>Greenville West</i>	<i>289732</i>	<i>KY</i>	<i>177</i>	<i>Muhlenberg</i>	Kalkaska 01-27N-7W	009799	MI	079	Kalkaska
Hanson	303692	KY	107	Hopkins	Lacey Station	393525	MI	015	Barry
Hawesville NW	011146	KY	091	Hancock	Lee 02-1W-5W	003265	MI	025	Calhoun
<i>Hickory School</i>	<i>320852</i>	<i>KY</i>	<i>059</i>	<i>Daviess</i>	Lee 11-1S-5W	003273	MI	025	Calhoun
Kettle Island	005569	KY	013	Bell	Lee 16	009823	MI	025	Calhoun
Kirkwood Springs	381788	KY	107	Hopkins	Lenox	410204	MI	099	Macomb
Magnolia	440775	KY	087	Green	Leonard	410731	MI	125	Oakland
Magnolia	440775	KY	099	Hart	<i>Loreed</i>	<i>427279</i>	<i>MI</i>	<i>133</i>	<i>Osceola</i>
Magnolia	440775	KY	123	Larue	Marion(Winterfield)	447874	MI	035	Clare
Midland	472280	KY	177	Muhlenberg	Marion(Winterfield)	447874	MI	133	Osceola
Mt Olive Church	009874	KY	227	Warren	Marysville-Morton	009849	MI	147	St Clair
Muldrough	493184	KY	163	Meade	Muttonville	495943	MI	099	Macomb
Owensboro West	532167	KY	059	Daviess	Northville	513052	MI	125	Oakland
<i>Slaughters East</i>	<i>660441</i>	<i>KY</i>	<i>107</i>	<i>Hopkins</i>	Northville	513052	MI	161	Washtenaw
St Charles	673074	KY	107	Hopkins	Northville	513052	MI	163	Wayne
					<i>Norwich</i>	<i>513424</i>	<i>MI</i>	<i>123</i>	<i>Newaygo</i>
Louisiana					Orient	527889	MI	035	Clare
Bear Creek	048643	LA50	013	Bienville	Orient	527889	MI	133	Osceola
Egan	215648	LA10	001	Acadia	Overisel	531485	MI	005	Allegan
Epps	226762	LA50	035	East Carroll	Partello	541445	MI	025	Calhoun
Epps	226762	LA50	123	West Carroll	Puttygut	575943	MI	147	St Clair
Garden Island Bay	265340	LA10	075	Plaquemines	Rapid River 35-28N-7W	003354	MI	079	Kalkaska
Grand Bayou	284214	LA10	007	Assumption	Ray	588018	MI	099	Macomb
Hester	319154	LA10	093	St James	Reed City	593157	MI	085	Lake
Holly	328510	LA50	031	De Soto	Reed City	593157	MI	133	Osceola
Jefferson Island	356843	LA10	045	Iberia	Riverside	603992	MI	035	Clare
Jefferson Island	356843	LA10	113	Vermilion	Riverside	603992	MI	113	Missaukee
Lake Bistineau	395331	LA50	013	Bienville	Rolland	611379	MI	073	Isabella
Lake Bistineau	395331	LA50	015	Bossier	Salem	625030	MI	005	Allegan
Lake Bistineau	395331	LA50	119	Webster	Salem	625030	MI	139	Ottawa

Note: Alias field names are in italics.

Table 5. Active Gas Storage Fields (Continued)

State and Field Name	Field Code	State/ Sub	County Code	County Name	State and Field Name	Field Code	State/ Sub	County Code	County Name
Shaver (Sumner-New Haven)	648622	MI	057	Gratiot	Greenwood North	290073	NY	101	Steuben
Shaver (Sumner-New Haven)	648622	MI	117	Montcalm	Holland	327673	NY	029	Erie
Six Lakes	658449	MI	073	Isabella	Honeoye	330612	NY	069	Ontario
Six Lakes	658449	MI	107	Mecosta	Independence East	344921	NY	003	Allegany
Six Lakes	658449	MI	117	Montcalm	Independence West	002124	NY	003	Allegany
Swan Creek	691651	MI	147	St Clair	Lawtons	405654	NY	029	Erie
<i>W C Taggart(Six Lakes)</i>	<i>743079</i>	<i>MI</i>	<i>107</i>	<i>Mecosta</i>	Nashville	499045	NY	009	Cattaraugus
<i>W C Taggart(Six Lakes)</i>	<i>743079</i>	<i>MI</i>	<i>117</i>	<i>Montcalm</i>	Nashville	499045	NY	013	Chautauqua
Washington Sec 28	003536	MI	099	Macomb	Perrysburg	551296	NY	009	Cattaraugus
Winfield	773189	MI	107	Mecosta	Sheridan	650885	NY	013	Chautauqua
Winfield	773189	MI	117	Montcalm	Tuscarora	722702	NY	101	Steuben
Winterfield	774212	MI	035	Clare	Wayne-Dundee	752910	NY	097	Schuyler
Woodville	778406	MI	123	Newaygo	Woodhull	777445	NY	101	Steuben
					Zoar	792603	NY	029	Erie
Minnesota					Ohio				
Waterville-Waseca	751666	MN	079	Le Sueur	<i>Benton</i>	<i>056548</i>	<i>OH</i>	<i>073</i>	<i>Hocking</i>
Waterville-Waseca	751666	MN	131	Rice	Benton	056548	OH	163	Vinton
Waterville-Waseca	751666	MN	161	Waseca	Brinker	092363	OH	029	Columbiana
					Chippewa	139789	OH	169	Wayne
Mississippi					Columbiana	155228	OH	029	Columbiana
Amory	016408	MS	095	Monroe	Crawford	168884	OH	073	Hocking
Eminence	223786	MS	031	Covington	Gabor	262457	OH	169	Wayne
Goodwin	280509	MS	095	Monroe	Guernsey	293778	OH	031	Coshocton
Jackson	353006	MS	049	Hinds	Guernsey	293778	OH	059	Guernsey
Jackson	353006	MS	121	Rankin	Guernsey	293778	OH	119	Muskingum
Muldon	492967	MS	095	Monroe	Holmes	329130	OH	075	Holmes
					<i>Laurel</i>	<i>404104</i>	<i>OH</i>	<i>073</i>	<i>Hocking</i>
Missouri					Lorain	427155	OH	093	Lorain
Florissant	002175	MO	183	St Charles	Lucas	432062	OH	005	Ashland
Florissant	002175	MO	189	St Louis	Lucas	432062	OH	139	Richland
					Mcarthur	456438	OH	163	Vinton
Montana					Medina	465281	OH	103	Medina
Box Elder	084938	MT	005	Blaine	Muskie	002010	OH	119	Muskingum
Box Elder	084938	MT	041	Hill	Pavonia	544080	OH	005	Ashland
Cedar Creek	127745	MT	025	Fallon	Pavonia	544080	OH	139	Richland
Cobb	150516	MT	035	Glacier	Perry	550800	OH	127	Perry
Cobb	150516	MT	101	Toole	Stark-Summit	677011	OH	151	Stark
Dry Creek	203602	MT	009	Carbon	Stark-Summit	677011	OH	153	Summit
Elk Basin	218981	MT	009	Carbon	Wayne	752906	OH	005	Ashland
					Wayne	752906	OH	075	Holmes
Nebraska					Wayne	752906	OH	169	Wayne
Huntsman	340291	NE	033	Cheyenne	Wayne	752906	OH	169	Wayne
					Weaver	753860	OH	005	Ashland
New Mexico					Weaver	753860	OH	083	Knox
Barker	039257	NM50	045	San Juan	Weaver	753860	OH	139	Richland
Gramma Ridge	284090	NM10	025	Lea	Wellington	757270	OH	093	Lorain
Keyes	377052	NM10	015	Eddy	Wellington	757270	OH	103	Medina
Rhodes	597885	NM10	025	Lea	Zane	790229	OH	119	Muskingum
San Ysidro Gsf	011577	NM50	043	Sandoval					
Vandagriff	733813	NM10	015	Eddy	Oklahoma				
Vandagriff-Keyes	733844	NM10	015	Eddy	<i>Ada</i>	<i>002830</i>	<i>OK</i>	<i>123</i>	<i>Pontotoc</i>
Washington Ranch	750376	NM10	015	Eddy	<i>Bartlesville</i>	<i>041427</i>	<i>OK</i>	<i>147</i>	<i>Washington</i>
					Chiles Dome	138766	OK	029	Coal
New York					Depew	188952	OK	037	Creek
<i>Adrian</i>	<i>004504</i>	<i>NY</i>	<i>101</i>	<i>Steuben</i>	Edmond West	214586	OK	073	Kingfisher
Allegany State Park	011014	NY	009	Cattaraugus	Edmond West	214586	OK	083	Logan
Beech Hill	001981	NY	003	Allegany	Enfisco	225088	OK	113	Osage
Bennington	056021	NY	029	Erie	Greasy Creek	287314	OK	063	Hughes
Bennington	056021	NY	121	Wyoming	Haskell	309272	OK	101	Muskogee
Colden	152221	NY	029	Erie	Hopeton North	331765	OK	151	Woods
Collins	154050	NY	029	Erie	<i>Osage</i>	<i>529036</i>	<i>OK</i>	<i>113</i>	<i>Osage</i>
Derby	189262	NY	029	Erie	<i>Sayre</i>	<i>636469</i>	<i>OK</i>	<i>009</i>	<i>Beckham</i>
<i>Dundee</i>	<i>206160</i>	<i>NY</i>	<i>123</i>	<i>Yates</i>	<i>Stuart</i>	<i>685505</i>	<i>OK</i>	<i>121</i>	<i>Pittsburg</i>
Greenwood	289918	NY	101	Steuben	Ulan East	726712	OK	121	Pittsburg

Note: Alias field names are in italics.

Table 5. Active Gas Storage Fields (Continued)

State and Field Name	Field Code	State/ Sub	County Code	County Name	State and Field Name	Field Code	State/ Sub	County Code	County Name
Webb	753953	OK	053	Grant	Oakford	517434	PA	129	Westmoreland
Woolaroc	778871	OK	113	Osage	<i>Owls Nest</i>	532477	PA	047	<i>Elk</i>
Oregon					<i>Palmer Storage</i>	536981	PA	117	<i>Tioga</i>
Mist	478835	OR	009	Columbia	<i>Patton</i>	542933	PA	129	<i>Westmoreland</i>
Pennsylvania					Portman	567146	PA	019	Butler
<i>Alabran</i>	006674	PA	063	<i>Indiana</i>	Pratt	571347	PA	059	Greene
Artemas	026747	PA	009	Bedford	Pratt	571347	PA	125	Washington
<i>Artemas A Storage</i>	009675	PA	009	<i>Bedford</i>	Queen	579391	PA	053	Forest
<i>Belmouth</i>	054750	PA	047	<i>Elk</i>	Queen	579391	PA	123	Warren
Big Run	063330	PA	033	Clearfield	Rager Mountain	582872	PA	021	Cambria
Big Run	063330	PA	063	Indiana	<i>Rush Run</i>	619479	PA	051	<i>Fayette</i>
Big Run	063330	PA	065	Jefferson	Sabinsville	623108	PA	105	Potter
<i>Blackhawk</i>	069081	PA	007	<i>Beaver</i>	Sabinsville	623108	PA	117	Tioga
<i>Blacktown</i>	069546	PA	085	<i>Mercer</i>	Saltsburg	627155	PA	063	Indiana
Boone Mountain	081063	PA	033	Clearfield	<i>South Bend</i>	666548	PA	005	<i>Armstrong</i>
Boone Mountain	081063	PA	047	Elk	<i>South Bend</i>	666548	PA	063	<i>Indiana</i>
Brush Run	097742	PA	007	Beaver	<i>Sprinkle</i>	670764	PA	065	<i>Jefferson</i>
Bull Creek	102516	PA	003	Allegheny	St Marys	674345	PA	047	Elk
<i>Bullers</i>	102702	PA	065	<i>Jefferson</i>	State Line	677538	PA	105	Potter
<i>Bunola</i>	103446	PA	003	<i>Allegheny</i>	<i>Summit</i>	688357	PA	049	<i>Erie</i>
<i>Bunola</i>	103446	PA	125	<i>Washington</i>	Swarts	692023	PA	059	<i>Greene</i>
<i>Clark</i>	145385	PA	063	<i>Indiana</i>	<i>Swarts West</i>	692034	PA	059	<i>Greene</i>
<i>Colvin</i>	155600	PA	125	<i>Washington</i>	<i>Swede Hill</i>	692147	PA	083	<i>Mckean</i>
Corry	162823	PA	049	Erie	<i>Tamarack</i>	696938	PA	035	<i>Clinton</i>
<i>Donegal</i>	196828	PA	125	<i>Washington</i>	<i>Tepe</i>	701449	PA	003	<i>Allegheny</i>
<i>East Branch A</i>	211672	PA	083	<i>Mckean</i>	Tioga	709091	PA	117	Tioga
<i>East Branch A</i>	211672	PA	123	<i>Warren</i>	<i>Trafford</i>	715192	PA	129	<i>Westmoreland</i>
<i>East Branch B</i>	211703	PA	083	<i>Mckean</i>	<i>Truittsburg</i>	719222	PA	031	<i>Clarion</i>
<i>East Branch B</i>	211703	PA	123	<i>Warren</i>	Wadsworth-North Oakland	743970	PA	019	Butler
Ellisburg	220996	PA	105	Potter	Webster	754542	PA	129	Westmoreland
<i>Fair-Helm</i>	233351	PA	005	<i>Armstrong</i>	<i>Wellendorf</i>	757146	PA	083	<i>Mckean</i>
<i>Finleyville</i>	241428	PA	003	<i>Allegheny</i>	<i>Wharton</i>	762308	PA	023	<i>Cameron</i>
<i>Finleyville</i>	241428	PA	125	<i>Washington</i>	<i>Wharton</i>	762308	PA	105	<i>Potter</i>
Five Forks	243009	PA	009	Bedford	Whitehorn Creek	010238	PA	129	Westmoreland
Frostburg	259010	PA	065	Jefferson	Wolf Creek	776236	PA	121	Venango
<i>Galbraith</i>	263480	PA	065	<i>Jefferson</i>	Tennessee				
<i>Gamble-Hayden</i>	263914	PA	003	<i>Allegheny</i>	Lick Branch	413514	Tn	151	Scott
<i>Greenlick</i>	289081	PA	035	<i>Clinton</i>	Texas				
<i>Greenlick</i>	289081	PA	105	<i>Potter</i>	Bammel	037242	TX30	201	Harris
Harrison	307691	PA	105	Potter	Bethel	058997	TX60	001	Anderson
<i>Haverline</i>	310264	PA	003	<i>Allegheny</i>	Bethel Dome	009684	TX60	001	Anderson
<i>Heard</i>	312923	PA	125	<i>Washington</i>	Boling	078707	TX30	481	Wharton
Hebron	313512	PA	105	Potter	Bryson	098873	TX90	237	Jack
<i>Henderson</i>	315837	PA	085	<i>Mercer</i>	Bryson South	099028	TX90	237	Jack
<i>Henderson</i>	315837	PA	121	<i>Venango</i>	Burnell	105089	TX20	025	Bee
<i>Hughes</i>	337532	PA	019	<i>Butler</i>	Burnell	105089	TX20	255	Karnes
<i>Hunters Cave</i>	339950	PA	059	<i>Greene</i>	Butler	107383	TX50	161	Freestone
<i>Irwin</i>	349153	PA	129	<i>Westmoreland</i>	Clear Lake	147214	TX30	201	Harris
<i>Keelor</i>	371213	PA	083	<i>Mckean</i>	Clear Lake West	147307	TX30	201	Harris
<i>Kinter</i>	380765	PA	063	<i>Indiana</i>	Clemens	147890	TX30	039	Brazoria
<i>Kirby</i>	381292	PA	059	<i>Greene</i>	Clemens NE	147891	TX30	039	Brazoria
Leidy	408747	PA	035	Clinton	Cliffside	148547	TX95	375	Potter
Leidy	408747	PA	105	Potter	Dayton North	183162	TX30	291	Liberty
<i>Majorsville</i>	441705	PA	059	<i>Greene</i>	De Leon	183713	TX70	093	Comanche
<i>Majorsville</i>	441705	PA	125	<i>Washington</i>	Felmac	238583	TX85	165	Gaines
<i>Markle</i>	448308	PA	065	<i>Jefferson</i>	Fulshear	260278	TX30	157	Fort Bend
<i>Mckinley</i>	461429	PA	047	<i>Elk</i>	Hilbig	322309	TX10	021	Bastrop
<i>Meade Run</i>	463638	PA	083	<i>Mckean</i>	Hill	322712	TX70	133	Eastland
<i>Meeker</i>	465622	PA	117	<i>Tioga</i>	Janellen	354742	TX70	049	Brown
<i>Mohan Run</i>	480876	PA	047	<i>Elk</i>	Katy	370123	TX30	157	Fort Bend
<i>Murrysville</i>	494982	PA	003	<i>Allegheny</i>	La-Pan	391797	TX90	077	Clay

Note: Alias field names are in italics.

Table 5. Active Gas Storage Fields (Continued)

State and Field Name	Field Code	State/ Sub	County Code	County Name	State and Field Name	Field Code	State/ Sub	County Code	County Name
Lake Dallas	396106	TX90	121	Denton	Gauley Mountain	267851	WV	067	Nicholas
Lansing North	401810	TX60	203	Harrison	Glady	274789	WV	075	Pocahontas
Lee Ray	407662	TX70	429	Stephens	Glady	274789	WV	083	Randolph
Lone Camp	424179	TX70	363	Palo Pinto	<i>Grapevine A & B</i>	285795	WV	039	<i>Kanawha</i>
Loop	426876	TX85	165	Gaines	Herbert	317697	WV	099	Wayne
Markham	447998	TX30	321	Matagorda	<i>Hunt</i>	339392	WV	039	<i>Kanawha</i>
Moss Bluff	487479	TX30	291	Liberty	Hurricane Creek	340601	WV	079	Putnam
New York City	505145	TX90	077	Clay	<i>Kausooth</i>	370371	WV	051	<i>Marshall</i>
Pecan Station	546832	TX75	451	Tom Green	<i>Lake</i>	394866	WV	079	<i>Putnam</i>
Pottsville	568820	TX70	193	Hamilton	<i>Lanham</i>	401624	WV	039	<i>Kanawha</i>
Rotherwood	614975	TX30	201	Harris	<i>Lanham</i>	401624	WV	079	<i>Putnam</i>
Rotherwood West	615006	TX30	201	Harris	Little Cacapon	418024	WV	027	Hampshire
Spindletop	669617	TX30	245	Jefferson	Liverpool	420613	WV	035	Jackson
Stratton Ridge	683893	TX30	039	Brazoria	Liverpool	420613	WV	087	Roane
Tri-Cities	716897	TX50	213	Henderson	Liverpool	420613	WV	105	Wirt
Yoast	787149	TX10	021	Bastrop	Logansport	423063	WV	049	Marion
Utah					<i>Lost Creek</i>	428271	WV	033	<i>Harrison</i>
Chalk Creek	131078	UT	043	Summit	Lynn Camp	436178	WV	103	Wetzel
Clay Basin	146315	UT	009	Daggett	Majorsville	441705	WV	051	Marshall
Coalville	150268	UT	043	Summit	Mannington	444340	WV	049	Marion
Moab	012012	UT	019	Grand	<i>Maple Lake</i>	445487	WV	033	<i>Harrison</i>
Virginia					<i>Maple Lake</i>	445487	WV	091	<i>Taylor</i>
Early Grove	211424	VA	169	Scott	<i>Mobley</i>	479915	WV	103	<i>Wetzel</i>
Early Grove	211424	VA	191	Washington	Murphy Creek (Freemansburg)	494610	WV	017	Doddridge
Saltville	015921	VA	173	Smyth	Murphy Creek (Freemansburg)	494610	WV	041	Lewis
Washington					Newberne	505393	WV	021	Gilmer
Jackson Prairie	353192	WA	041	Lewis	<i>Rackett-Newberne</i>	582509	WV	021	<i>Gilmer</i>
West Virginia					<i>Raleigh</i>	584174	WV	081	<i>Raleigh</i>
Aspinall-Finster	028700	WV	041	Lewis	<i>Rhodes</i>	597885	WV	041	<i>Lewis</i>
Augusta	030591	WV	027	Hampshire	<i>Ripley</i>	602659	WV	035	<i>Jackson</i>
Big Run-Birchfield	063361	WV	103	Wetzel	Rockport	608868	WV	035	Jackson
Blue Creek (Falling Rock)	075064	WV	039	Kanawha	Rockport	608868	WV	105	Wirt
<i>Bridgeport</i>	<i>091588</i>	<i>WV</i>	<i>033</i>	<i>Harrison</i>	Rockport	608868	WV	107	Wood
Bridgeport-Pruntytown	091681	WV	033	Harrison	Shirley	652900	WV	095	Tyler
Bridgeport-Pruntytown	091681	WV	091	Taylor	Silver Hill	656279	WV	103	Wetzel
<i>Browns Creek</i>	<i>096052</i>	<i>WV</i>	<i>039</i>	<i>Kanawha</i>	Sinking Creek	657612	WV	021	Gilmer
<i>Browns Creek</i>	<i>096052</i>	<i>WV</i>	<i>079</i>	<i>Putnam</i>	<i>Skin Creek</i>	<i>659635</i>	<i>WV</i>	<i>041</i>	<i>Lewis</i>
Burdett-St Albans	104035	WV	039	Kanawha	Slab Fork	659945	WV	081	Raleigh
Burdett-St Albans	104035	WV	079	Putnam	Terra Alta	701821	WV	077	Preston
Burning Springs South	105430	WV	105	Wirt	<i>Victory</i>	<i>738077</i>	<i>WV</i>	<i>051</i>	<i>Marshall</i>
Cameron-Kausooth	004358	WV	051	Marshall	<i>Victory</i>	<i>738077</i>	<i>WV</i>	<i>103</i>	<i>Wetzel</i>
<i>Coco</i>	<i>150919</i>	<i>WV</i>	<i>039</i>	<i>Kanawha</i>	Weston-Jane Lew	760959	WV	033	Harrison
<i>Comet</i>	<i>155941</i>	<i>WV</i>	<i>091</i>	<i>Taylor</i>	Weston-Jane Lew	760959	WV	041	Lewis
Conings	157615	WV	017	Doddridge	Wilbur	767795	WV	017	Doddridge
Conings	157615	WV	021	Gilmer	Wilbur	767795	WV	095	Tyler
Craddock	167954	WV	083	Randolph	X- 1	782253	WV	079	Putnam
Craddock	167954	WV	097	Upshur	Wyoming				
<i>Derricks Creek</i>	<i>189324</i>	<i>WV</i>	<i>039</i>	<i>Kanawha</i>	Billy Creek	064880	WY	019	Johnson
Elk-Poca (Sissonville)	219529	WV	035	Jackson	Brady	087651	WY	037	Sweetwater
Elk-Poca (Sissonville)	219529	WV	039	Kanawha	Bunker Hill	103353	WY	007	Carbon
Elk-Poca (Sissonville)	219529	WV	079	Putnam	Chimney Butte	139262	WY	023	Lincoln
Fink Creek (Dry Fork)	241304	WV	041	Lewis	Chimney Butte	139262	WY	035	Sublette
<i>Fink-Kennedy</i>	<i>241335</i>	<i>WV</i>	<i>017</i>	<i>Doddridge</i>	Elk Basin	218981	WY	029	Park
<i>Fink-Kennedy</i>	<i>241335</i>	<i>WV</i>	<i>033</i>	<i>Harrison</i>	Kirk	381509	WY	013	Fremont
<i>Fink-Kennedy</i>	<i>241335</i>	<i>WV</i>	<i>041</i>	<i>Lewis</i>	<i>Kirk Ranch</i>	<i>009805</i>	<i>WY</i>	<i>013</i>	<i>Fremont</i>
Five Mile-Carpenter	243102	WV	039	Kanawha	Leroy	411227	WY	041	Uinta
Gauley Mountain	267851	WV	019	Fayette	Oil Springs	520968	WY	007	Carbon

Note: Alias field names are in italics.

Table 6. Fields Located in Multiple Jurisdictions

Field Code	Field Name	State Sub	County Code	Field Code	Field Name	State Sub	County Code
ALABAMA & FLORIDA				COLORADO & NEBRASKA			
235596	FANNY CHURCH	AL	053	546553	PEBBLE	CO	075
355672	JAY	FL	033	546553	PEBBLE	NE	033
418505	LITTLE ESCAMBIA CREEK	AL	053	COLORADO & NEW MEXICO 50			
355672	JAY	FL	033	039319	BARKER DOME	CO	067
418505	LITTLE ESCAMBIA CREEK	AL	053	039288	BARKER CREEK	NM50	045
355672	JAY	FL	113	343874	IGNACIO-BLANCO	CO	007
ALABAMA & MISSISSIPPI				070724	BLANCO	NM50	045
099311	BUCATUNNA CREEK	AL	023	343874	IGNACIO-BLANCO	CO	067
099311	BUCATUNNA CREEK	MS	023	070724	BLANCO	NM50	045
401314	LANGSDALE	AL	023	COLORADO & UTAH			
401314	LANGSDALE	MS	023	111260	CACHE	CO	083
ALABAMA 05 & OTHER GULF 00				459538	MCELMO MESA	UT	037
010820	NORTH CENTRAL GULF	AL05	990	245474	FLODINE PARK	CO	083
886827	MOBILE BLK 827	OG00	995	349587	ISMAY	UT	037
010821	NORTHWEST GULF	AL05	990	245474	FLODINE PARK	CO	083
886823	MOBILE BLK 823	OG00	995	349618	ISMAY SOUTH	UT	037
010821	NORTHWEST GULF	AL05	990	666641	SOUTH CANYON	CO	045
886868	MOBILE BLK 868	OG00	995	038420	BAR X	UT	019
014292	STATE 109	AL05	990	666641	SOUTH CANYON	CO	045
886821	MOBILE BLK 821	OG00	995	628068	SAN ARROYO	UT	019
ARKANSAS & LOUISIANA 50				666641	SOUTH CANYON	CO	077
024391	ARKANA	AR	073	038420	BAR X	UT	019
024391	ARKANA	LA50	015	666641	SOUTH CANYON	CO	077
311380	HAYNESVILLE	AR	027	677662	STATELINE	UT	019
311380	HAYNESVILLE	LA50	027	COLORADO & WYOMING			
311380	HAYNESVILLE	AR	027	320139	HIAWATHA	CO	081
311380	HAYNESVILLE	LA50	119	320139	HIAWATHA	WY	037
591855	RED ROCK	AR	027	419621	LITTLE SNAKE	CO	081
653551	SHONGALOO NORTH-RED ROCK	LA50	119	419621	LITTLE SNAKE	WY	037
609860	RODESSA	AR	091	569161	POWDER WASH	CO	081
609860	RODESSA	LA50	017	569130	POWDER SPRINGS	WY	037
653520	SHONGALOO NORTH	AR	027	615812	ROUND TABLE	CO	081
653551	SHONGALOO NORTH-RED ROCK	LA50	119	615812	ROUND TABLE	WY	037
671725	SPRINGHILL	AR	027	677662	STATELINE	CO	081
671725	SPRINGHILL	LA50	119	677538	STATE LINE	WY	037
ARKANSAS & TEXAS 60				760277	WEST SIDE CANAL	CO	081
074196	BLOOMBURG	AR	091	034979	BAGGS SOUTH	WY	007
074196	BLOOMBURG	TX60	067	760277	WEST SIDE CANAL	CO	081
609860	RODESSA	AR	091	760277	WEST SIDE CANAL	WY	007
609860	RODESSA	TX60	067	ILLINOIS & INDIANA			
CALIFORNIA 00 & CALIFORNIA 05				011572	ALLENDALE	IL	185
121397	CARPINTERIA OFFSHORE	CA00	995	146749	CLAYPOLE HILLS CONSOL	IN	083
121397	CARPINTERIA OFFSHORE	CA05	990	055122	BEMAN EAST	IL	101
COLORADO & KANSAS				048488	BEAMAN EAST CONSOL	IN	083
012453	ARAPAHOE EAST	CO	017	068523	BLACK RIVER	IL	193
011646	ARAPAHOEKAN	KS	199	068554	BLACK RIVER CONSOL	IN	129
012168	FRONTERA	CO	017	346998	INMAN EAST CONSOL	IL	059
681382	STOCKHOLM	KS	199	346967	INMAN EAST	IN	129
012168	FRONTERA	CO	017	371627	KEENSBURG SOUTH	IL	185
011860	STOCKHOLM SOUTH	KS	199	291313	GRIFFIN CONSOL	IN	051
289918	GREENWOOD	CO	009	405251	LAWRENCE COUNTY DIVISION	IL	101
290011	GREENWOOD GAS AREA	KS	129	673384	ST FRANCISVILLE CONSOL	IN	083
013490	JACE	CO	061	453702	MAUNIE EAST	IL	193
013500	MOORE-JOHNSON	KS	071	453702	MAUNIE EAST	IN	129
681382	STOCKHOLM	CO	017	490332	MT CARMEL	IL	185
681475	STOCKHOLM SW	KS	071	490363	MT CARMEL CONSOL	IN	051
				490332	MT CARMEL	IL	185
				490425	MT CARMEL NORTH	IN	083

Table 6. Fields Located in Multiple Jurisdictions (Continued)

Field Code	Field Name	State Sub	County Code	Field Code	Field Name	State Sub	County Code
503874	NEW HARMONY CONSOL	IL	193	001551	LAWSON NE	KS	039
291313	GRIFFIN CONSOL	IN	051	772166	WILSONVILLE SW	NE	065
503874	NEW HARMONY CONSOL	IL	193	KANSAS & OKLAHOMA			
291313	GRIFFIN CONSOL	IN	129	112872	CALDWELL	KS	191
503967	NEW HARMONY SOUTH	IL	193	112872	CALDWELL	OK	053
756200	WELBORN NORTH CONSOL	IN	129	116964	CANEY	KS	125
504029	NEW HAVEN CONSOL	IL	193	116623	CANARY	OK	147
335051	HOVEY WEST	IN	129	145447	CLARK CREEK	KS	025
504029	NEW HAVEN CONSOL	IL	193	145447	CLARK CREEK	OK	059
756185	WELBORN CONSOL	IN	129	218702	ELGIN	KS	019
516721	OAK GROVE	IL	059	218733	ELGIN SOUTH	OK	113
516721	OAK GROVE	IN	129	219663	ELKHART	KS	129
607411	ROCHESTER	IL	185	122606	CARTHAGE DISTRICT NE	OK	139
607411	ROCHESTER	IN	051	241118	FINCHAM	KS	119
673415	ST FRANCISVILLE EAST	IL	101	480070	MOCANE-LAVERNE GAS AREA	OK	007
673384	ST FRANCISVILLE CONSOL	IN	083	290011	GREENWOOD GAS AREA	KS	129
677538	STATE LINE	IL	023	122668	CARTHAGE GAS AREA	OK	139
677538	STATE LINE	IN	167	337780	HUGOTON GAS AREA	KS	175
ILLINOIS & KENTUCKY				295545	GUYMON-HUGOTON GAS AREA	OK	139
649056	SHAWNEETOWN EAST	IL	059	337780	HUGOTON GAS AREA	KS	189
649056	SHAWNEETOWN EAST	KY	225	295545	GUYMON-HUGOTON GAS AREA	OK	139
INDIANA & KENTUCKY				413049	LIBERAL-LIGHT	KS	175
039257	BARKER	IN	163	480070	MOCANE-LAVERNE GAS AREA	OK	007
039257	BARKER	KY	101	461150	MCKAY	KS	035
393595	LACONIA	IN	061	139014	CHILOCCO EAST	OK	071
194968	DOE RUN	KY	163	461491	MCKINNEY	KS	025
569502	POWELLS LAKE CONSOL	IN	129	480070	MOCANE-LAVERNE GAS AREA	OK	007
569471	POWELLS LAKE	KY	225	461491	MCKINNEY	KS	119
662394	SMITH MILLS NORTH	IN	129	480070	MOCANE-LAVERNE GAS AREA	OK	007
662332	SMITH MILLS CONSOL	KY	101	494579	MURPHY	KS	191
INDIANA & MICHIGAN				192479	DILWORTH DISTRICT	OK	071
219694	ELKHART NORTH	IN	039	551823	PERU-SEDAN	KS	019
215485	EDWARDSBURG	MI	027	196518	DOMES-POND CREEK	OK	113
INDIANA & OHIO				551823	PERU-SEDAN	KS	019
716680	TRENTON	IN	001	721307	TURKEY CREEK	OK	113
005094	CHATTANOOGA	OH	107	696659	TALOGA	KS	129
716680	TRENTON	IN	001	244482	FLATS NW	OK	139
005777	WILLSHIRE	OH	161	723065	TUTTLE SE	KS	033
716680	TRENTON	IN	075	429790	LOVEDALE NW	OK	059
005094	CHATTANOOGA	OH	107	724826	TYRO	KS	125
KANSAS & MISSOURI				116623	CANARY	OK	147
178946	DALLAS	KS	091	776608	WOLGAMOTT	KS	007
411537	LESTER	MO	095	776608	WOLGAMOTT	OK	151
265805	GARLAND	KS	011	786333	YELLOWSTONE NORTH	KS	033
002598	SWARTZ-GARLAND	MO	217	786302	YELLOWSTONE	OK	151
429108	LOUISBURG	KS	121	KENTUCKY & TENNESSEE			
002651	FREEMAN-WESTLINE	MO	037	004672	BEATY	KY	053
429108	LOUISBURG	KS	121	677755	STATIC	TN	137
002602	LIMPUS	MO	037	KENTUCKY & VIRGINIA			
429108	LOUISBURG	KS	121	011711	ELKHORN CITY BS EAST	KY	195
002603	LISLE	MO	037	012915	BREAKS-HAYSI	VA	027
681041	STILLWELL	KS	091	005786	WOODMAN EAST	KY	195
747512	WALTON	MO	037	008403	HURLEY	VA	027
KANSAS & NEBRASKA				KENTUCKY & WEST VIRGINIA			
071468	BLEES	KS	039	076961	BOARD TREE	KY	195
657643	SINK	NE	145	271983	GILBERT	WV	059
332467	HORINEK	KS	153	010687	BUSKIRK NORTH	KY	195
332467	HORINEK	NE	087	440775	MAGNOLIA	WV	059
337377	HUFFSTUTTER	KS	147	014094	FALLSBURG CONSOL	KY	127
012564	ALMA SOUTH	NE	083	429046	LOUISA	WV	099

Table 6. Fields Located in Multiple Jurisdictions (Continued)

Field Code	Field Name	State Sub	County Code	Field Code	Field Name	State Sub	County Code
429046	LOUISA	KY	127	935033	WEST CAMERON BLK 33	LA00	995
429046	LOUISA	WV	099	935033	WEST CAMERON BLK 33	LA05	990
005786	WOODMAN EAST	KY	195	935045	WEST CAMERON BLK 45	LA00	995
271983	GILBERT	WV	059	935045	WEST CAMERON BLK 45	LA05	990
010881	ZELDA	KY	127	935049	WEST CAMERON BLK 49	LA00	995
250140	FORT GAY-HUBBARDSTOWN	WV	099	935049	WEST CAMERON BLK 49	LA05	990
LOUISIANA 00 & LOUISIANA 05				942027	WEST DELTA BLK 27	LA00	995
803002	BAY MARCHAND BLK 2	LA00	995	942027	WEST DELTA BLK 27	LA05	990
803002	BAY MARCHAND BLK 2	LA05	990	942035	WEST DELTA BLK 35	LA00	995
810053	BRETON SOUND BLK 53	LA00	995	942018	WEST DELTA BLK 18	LA05	990
810053	BRETON SOUND BLK 53	LA05	990	LOUISIANA 00 & OTHER GULF 00			
159661	COON POINT	LA00	995	933022	VIOSCA KNOLL BLK 22	LA00	995
159661	COON POINT	LA05	990	886990	MOBILE BLK 990	OG00	995
842016	GRAND ISLE BLK 16	LA00	995	LOUISIANA 00 & TEXAS 00			
842016	GRAND ISLE BLK 16	LA05	990	840065	GARDEN BANKS BLK 65	LA00	995
842018	GRAND ISLE BLK 18	LA00	995	840065	GARDEN BANKS BLK 65	TX00	995
842018	GRAND ISLE BLK 18	LA05	990	850244	HIGH ISLAND EA BLK A244	LA00	995
842025	GRAND ISLE BLK 25	LA00	995	850244	HIGH ISLAND EA BLK A244	TX00	995
842025	GRAND ISLE BLK 25	LA05	990	852330	HIGH ISLAND EA SX BLK A330	LA00	995
413824	LIGHTHOUSE POINT	LA00	995	852330	HIGH ISLAND EA SX BLK A330	TX00	995
413824	LIGHTHOUSE POINT	LA05	990	852370	HIGH ISLAND EA SX BLK A370	LA00	995
866151	MAIN PASS BLK 151	LA00	995	852370	HIGH ISLAND EA SX BLK A370	TX00	995
866074	MAIN PASS BLK 74	LA05	990	890010	SABINE PASS BLK 10	LA00	995
866006	MAIN PASS BLK 6	LA00	995	890010	SABINE PASS BLK 10	TX00	995
866006	MAIN PASS BLK 6	LA05	990	890017	SABINE PASS BLK 17	LA00	995
866069	MAIN PASS BLK 69	LA00	995	890017	SABINE PASS BLK 17	TX00	995
866069	MAIN PASS BLK 69	LA05	990	937663	WEST CAMERON SA BLK 663	LA00	995
866073	MAIN PASS BLK 73	LA00	995	937663	WEST CAMERON SA BLK 663	TX00	995
866074	MAIN PASS BLK 74	LA05	990	LOUISIANA 10 & TEXAS 30			
894015	SHIP SHOAL BLK 15	LA00	995	011789	ALLIGATOR LAKE	LA10	011
894015	SHIP SHOAL BLK 15	LA05	990	011789	ALLIGATOR LAKE	TX30	351
894069	SHIP SHOAL BLK 69	LA00	995	469094	MERRYVILLE	LA10	011
894066	SHIP SHOAL BLK 66	LA05	990	469094	MERRYVILLE	TX30	351
894072	SHIP SHOAL BLK 72	LA00	995	554404	PHOENIX LAKE	LA10	019
894072	SHIP SHOAL BLK 72	LA05	990	554404	PHOENIX LAKE	TX30	361
909001	SOUTH PASS BLK 1	LA00	995	622922	SABINE LAKE NORTH	LA10	023
909001	SOUTH PASS BLK 1	LA05	990	622922	SABINE LAKE NORTH	TX30	361
909020	SOUTH PASS BLK 20	LA00	995	659728	SKINNER LAKES	LA10	011
909020	SOUTH PASS BLK 20	LA05	990	659728	SKINNER LAKES	TX30	351
909021	SOUTH PASS BLK 21	LA00	995	LOUISIANA 50 & MISSISSIPPI			
909021	SOUTH PASS BLK 21	LA05	990	066415	BISLAND BAYOU	LA50	029
909026	SOUTH PASS BLK 26	LA00	995	066415	BISLAND BAYOU	MS	001
909026	SOUTH PASS BLK 26	LA05	990	228196	ESPERANCE POINT	LA50	029
909027	SOUTH PASS BLK 27	LA00	995	228196	ESPERANCE POINT	MS	001
909027	SOUTH PASS BLK 27	LA05	990	272479	GILES BEND	LA50	029
909030	SOUTH PASS BLK 30	LA00	995	272479	GILES BEND	MS	001
909030	SOUTH PASS BLK 30	LA05	990	499169	NATCHEZ FERRY	LA50	029
909042	SOUTH PASS BLK 42	LA00	995	499169	NATCHEZ FERRY	MS	001
909042	SOUTH PASS BLK 42	LA05	990	610201	RODNEY ISLAND	LA50	107
909061	SOUTH PASS BLK 61	LA00	995	610201	RODNEY ISLAND	MS	063
909006	SOUTH PASS BLK 6	LA05	990	LOUISIANA 50 & TEXAS 60			
913078	SOUTH PASS SA BLK 78	LA00	995	053572	BELLE BOWER	LA50	031
913078	SOUTH PASS SA BLK 78	LA05	990	053572	BELLE BOWER	TX60	365
929014	VERMILION BLK 14	LA00	995	058935	BETHANY-LONGSTREET	LA50	017
929014	VERMILION BLK 14	LA05	990	058904	BETHANY	TX60	365
929014	VERMILION BLK 14	LA00	995	111694	CADDO PINE ISLAND	LA50	017
929028	VERMILION BLK 28	LA05	990	447812	MARION COUNTY	TX60	315
935017	WEST CAMERON BLK 17	LA00	995	290197	GREENWOOD-WASKOM	LA50	017
935017	WEST CAMERON BLK 17	LA05	990	750612	WASKOM	TX60	365
935028	WEST CAMERON BLK 28	LA00	995	423063	LOGANSPOINT	LA50	031
935028	WEST CAMERON BLK 28	LA05	990	423063	LOGANSPOINT	TX60	365

Table 6. Fields Located in Multiple Jurisdictions (Continued)

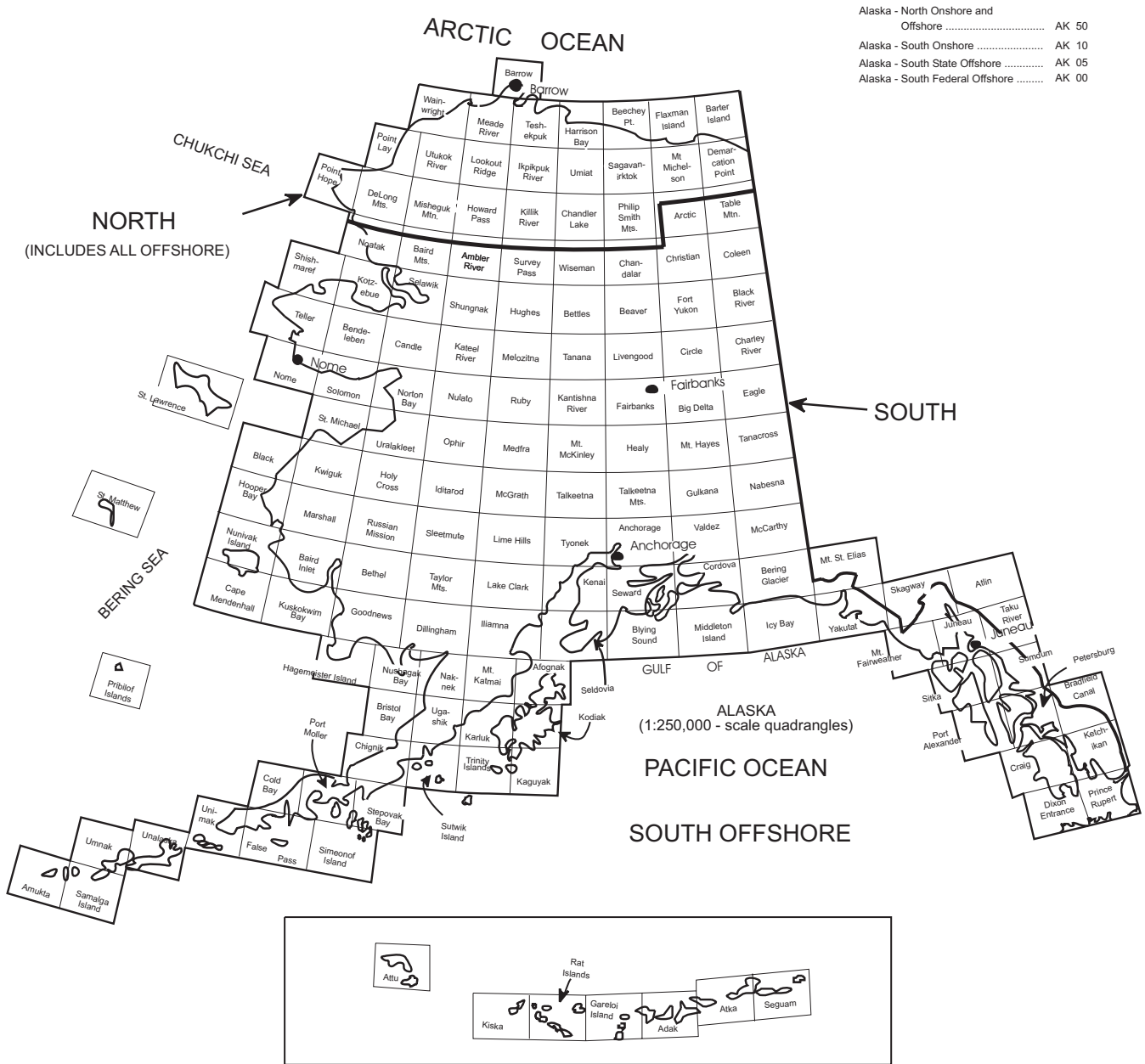
Field Code	Field Name	State Sub	County Code	Field Code	Field Name	State Sub	County Code
426504	LONGWOOD	LA50	017	325720	HOBBS EAST	NM10	025
426504	LONGWOOD	TX60	203	325720	HOBBS EAST	TX85	165
609860	RODESSA	LA50	017	420117	LITTMAN	NM10	025
609860	RODESSA	TX60	067	420117	LITTMAN	TX85	165
609860	RODESSA	LA50	017	NY & PENNSYLVANIA			
609860	RODESSA	TX60	315	086938	BRADFORD	NY	009
MARYLAND & PENNSYLVANIA				086938	BRADFORD	PA	083
501504	NEGRO MOUNTAIN	MD	023	094130	BROOKFIELD	NY	101
501504	NEGRO MOUNTAIN	PA	111	094130	BROOKFIELD	PA	117
MARYLAND & WEST VIRGINIA				107176	BUSTI	NY	013
489401	MOUNTAIN LAKE PARK	MD	023	686683	SUGAR GROVE	PA	123
489401	MOUNTAIN LAKE PARK	WV	077	307722	HARRISON EAST	NY	101
MONTANA & NORTH DAKOTA				307691	HARRISON	PA	105
127745	CEDAR CREEK	MT	025	442573	MALLORY	NY	009
127745	CEDAR CREEK	ND	011	759626	WEST BRANCH	PA	083
208741	DWYER	MT	091	599404	RICHBURG	NY	003
290538	GRENORA	ND	105	652414	SHINGLEHOUSE	PA	083
243924	FLAT LAKE EAST	MT	091	599404	RICHBURG	NY	003
243924	FLAT LAKE EAST	ND	023	652414	SHINGLEHOUSE	PA	105
280726	GOOSE LAKE EAST	MT	091	647971	SHARON	NY	003
280726	GOOSE LAKE EAST	ND	023	652414	SHINGLEHOUSE	PA	105
481643	MONDAK WEST	MT	083	675523	STAGECOACH	NY	107
481635	MONDAK	ND	053	675523	STAGECOACH	PA	015
MONTANA & WYOMING				677538	STATE LINE	NY	003
027150	ASH CREEK	MT	003	677538	STATE LINE	PA	105
027150	ASH CREEK	WY	033	OHIO & PENNSYLVANIA			
218981	ELK BASIN	MT	009	015217	BUSHNELL-CONNEAUT	OH	007
218981	ELK BASIN	WY	029	157832	CONNEAUT	PA	039
255550	FRANNIE	MT	009	OHIO & WEST VIRGINIA			
255550	FRANNIE	WY	029	005001	ATHALIA	OH	087
NORTH DAKOTA & SOUTH DAKOTA				340105	HUNTINGTON	WV	011
333079	HORSE CREEK SOUTH	ND	011	005001	ATHALIA	OH	087
465196	MEDICINE POLE HILLS SOUTH	SD	063	340105	HUNTINGTON	WV	099
677538	STATE LINE	ND	011	039505	BARLOW	OH	167
677538	STATE LINE	SD	063	540174	PARKERSBURG	WV	107
NEW MEXICO 10 & TEXAS 80				054409	BELLS RUN	OH	167
043752	BATTLEAXE	NM10	025	674345	ST MARYS	WV	073
043752	BATTLEAXE	TX80	301	082830	BOSWORTH	OH	167
195898	DOLLARHIDE	NM10	025	674345	ST MARYS	WV	073
195898	DOLLARHIDE	TX80	003	005056	BRILLIANT	OH	081
216935	EL MAR	NM10	025	686435	SUCKERROD	WV	009
216935	EL MAR	TX80	301	104872	BURLINGTON	OH	013
353905	JALMAT	NM10	025	276711	GLENN RUN	WV	069
636880	SCARBOROUGH	TX80	495	005096	CHESIRE	OH	053
420117	LITTMAN	NM10	025	562837	POINT PLEASANT	WV	053
420117	LITTMAN	TX80	003	284927	GRANDVIEW	OH	167
451470	MASON NORTH	NM10	015	056331	BENS RUN	WV	073
451470	MASON NORTH	TX80	301	284927	GRANDVIEW	OH	167
451470	MASON NORTH	NM10	025	056331	BENS RUN	WV	095
451470	MASON NORTH	TX80	301	292584	GROUNDHOG CREEK	OH	105
590026	RED BLUFF	NM10	015	292584	GROUNDHOG CREEK	WV	035
590026	RED BLUFF	TX80	301	292584	GROUNDHOG CREEK	OH	105
636880	SCARBOROUGH	NM10	025	602752	RIPLEY NORTH	WV	035
636880	SCARBOROUGH	TX80	495	315775	HENDERSHOT	OH	167
677662	STATELINE	NM10	025	077064	BOAZ	WV	107
677662	STATELINE	TX80	003	407104	LEBANON	OH	105
NEW MEXICO 10 & TEXAS 85				502510	NEPTUNE	WV	035
093727	BRONCO	NM10	025	420644	LIVERPOOL EAST	OH	029
093727	BRONCO	TX85	501	136565	CHESTER-PUGHTOWN	WV	029
				430875	LOWER NEWPORT	OH	167
				077064	BOAZ	WV	107

Table 6. Fields Located in Multiple Jurisdictions (Continued)

Field Code	Field Name	State Sub	County Code	Field Code	Field Name	State Sub	County Code
005882	MILE RUN	OH	167	121862	CARSON	PA	007
077064	BOAZ	WV	107	267324	GAS VALLEY	WV	029
005906	MOORES JUNCTION	OH	167	241424	FINLEY WEST	PA	059
077064	BOAZ	WV	107	441705	MAJORSVILLE	WV	051
005945	NEWELL RUN	OH	167	241424	FINLEY WEST	PA	125
674345	ST MARYS	WV	073	441705	MAJORSVILLE	WV	051
005968	OLIVE-MEIGS	OH	105	266518	GARRISON	PA	059
503688	NEW ENGLAND	WV	107	325192	HIXENBAUGH (CAPPO RUN)	WV	103
005980	PATTON RUN	OH	013	007381	HOOVERS RUN	PA	059
276711	GLENN RUN	WV	069	089511	BRAVE	WV	061
006036	PROCTORVILLE	OH	087	007381	HOOVERS RUN	PA	059
340105	HUNTINGTON	WV	011	445595	MAPLE-WADESTOWN	WV	061
006036	PROCTORVILLE	OH	087	374107	KENDALL	PA	007
340105	HUNTINGTON	WV	099	721803	TURKEYFOOT	WV	029
575633	PUTNAM	OH	009	458484	MCCRACKEN	PA	059
503688	NEW ENGLAND	WV	107	004358	CAMERON-KAUSOOTH	WV	051
006417	SHEETS RUN	OH	167	458484	MCCRACKEN	PA	059
056331	BENS RUN	WV	073	608868	ROCKPORT	WV	051
006417	SHEETS RUN	OH	167	489029	MOUNT MORRIS	PA	059
056331	BENS RUN	WV	095	124404	CASSVILLE-BOWLBY	WV	061
658139	SISTERSVILLE	OH	111	489029	MOUNT MORRIS	PA	059
658139	SISTERSVILLE	WV	095	234157	FAIRVIEW-STATLER RUN-MT MO	WV	061
691364	SUTTON	OH	105	503770	NEW FREEPORT	PA	059
503998	NEW HAVEN	WV	053	054502	BELLTON	WV	051
	OKLAHOMA & TEXAS 90			503770	NEW FREEPORT	PA	059
302824	HANDY SE	OK	095	004358	CAMERON-KAUSOOTH	WV	051
302824	HANDY SE	TX90	181	503770	NEW FREEPORT	PA	059
641879	SEAY	OK	067	607597	ROCK CAMP	WV	103
482395	MONTAGUE COUNTY REGULAR	TX90	337	007450	POINT MARION	PA	059
658325	SIVELLS BEND	OK	085	124404	CASSVILLE-BOWLBY	WV	061
658325	SIVELLS BEND	TX90	097	598846	RICH HILL	PA	059
	OKLAHOMA & TEXAS 95			441705	MAJORSVILLE	WV	051
036467	BALKO SOUTH	OK	007	007331	SHANNON RUN	PA	059
011479	ALLEN-PARKER	TX95	357	484038	MOORESVILLE	WV	061
116065	CAMRICK DISTRICT	OK	007	662890	SMITHS FERRY	PA	007
551389	PERRYTON NORTH	TX95	357	662890	SMITHS FERRY	WV	029
291499	GRIGGS SOUTH	OK	025	721514	TURKEY FOOT	PA	125
365433	JUDD	TX95	421	721803	TURKEYFOOT	WV	029
295669	GUYMON SOUTH	OK	139	765353	WHITELY CREEK	PA	059
324944	HITCHLAND WEST	TX95	195	124404	CASSVILLE-BOWLBY	WV	061
295545	GUYMON-HUGOTON GAS AREA	OK	139		TEXAS 00 & TEXAS 05		
000333	TEXAS HUGOTON	TX95	195	805437	BRAZOS BLK 437	TX00	995
295545	GUYMON-HUGOTON GAS AREA	OK	139	805438	BRAZOS BLK 438	TX05	990
000333	TEXAS HUGOTON	TX95	421	848022	HIGH ISLAND BLK 22	TX00	995
321565	HIGGINS SOUTH	OK	045	006222	BLOCK 23L	TX05	990
321565	HIGGINS SOUTH	TX95	211	873519	MATAGORDA ISLAND BLK 519	TX00	995
321565	HIGGINS SOUTH	OK	045	873519	MATAGORDA ISLAND BLK 519	TX05	990
321565	HIGGINS SOUTH	TX95	295	873527	MATAGORDA ISLAND BLK 527	TX00	995
350269	IVANHOE	OK	007	126721	CAVALLO	TX05	990
247567	FOLLETT	TX95	295		UTAH & WYOMING		
423001	LOGAN SOUTH	OK	007	002380	ANSCHUTZ RANCH EAST	UT	043
247567	FOLLETT	TX95	295	002380	ANSCHUTZ RANCH EAST	WY	041
455562	MAYFIELD WEST	OK	009		VIRGINIA & WEST VIRGINIA		
475752	MILLS RANCH	TX95	483	008387	BERWIND	VA	185
480070	MOCANE-LAVERNE GAS AREA	OK	007	061408	BIG CREEK	WV	047
247567	FOLLETT	TX95	295	277145	GLICK	VA	027
	PENNSYLVANIA & WEST VIRGINIA			004501	ROCKRIDGE	WV	047
007281	ASHTREE	PA	059	008403	HURLEY	VA	027
445595	MAPLE-WADESTOWN	WV	061	271983	GILBERT	WV	059

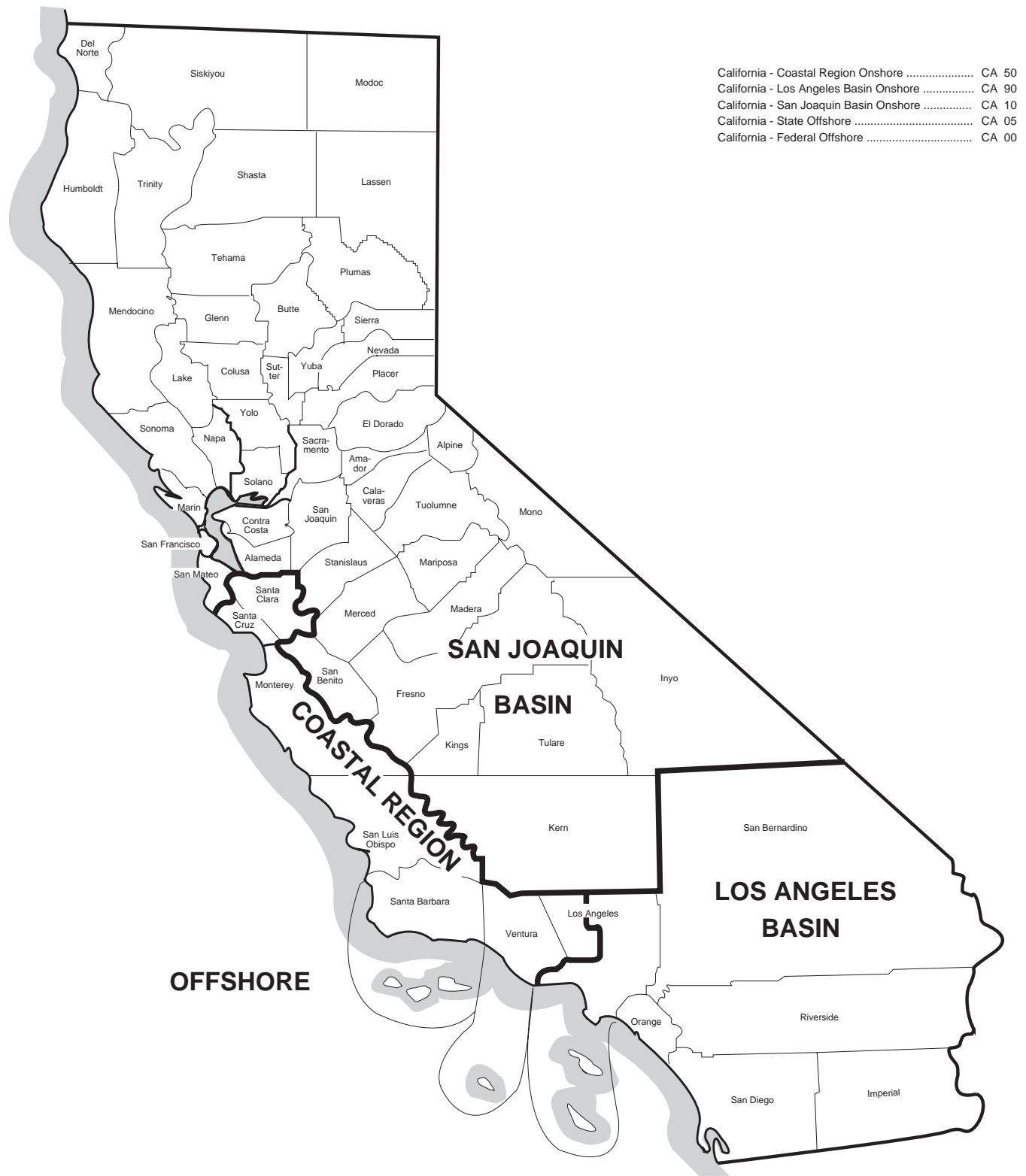
Source: Energy Information Administration, Office of Oil and Gas.

Figure 4. Subdivisions of Alaska and U.S. Geological Survey Quadrangles



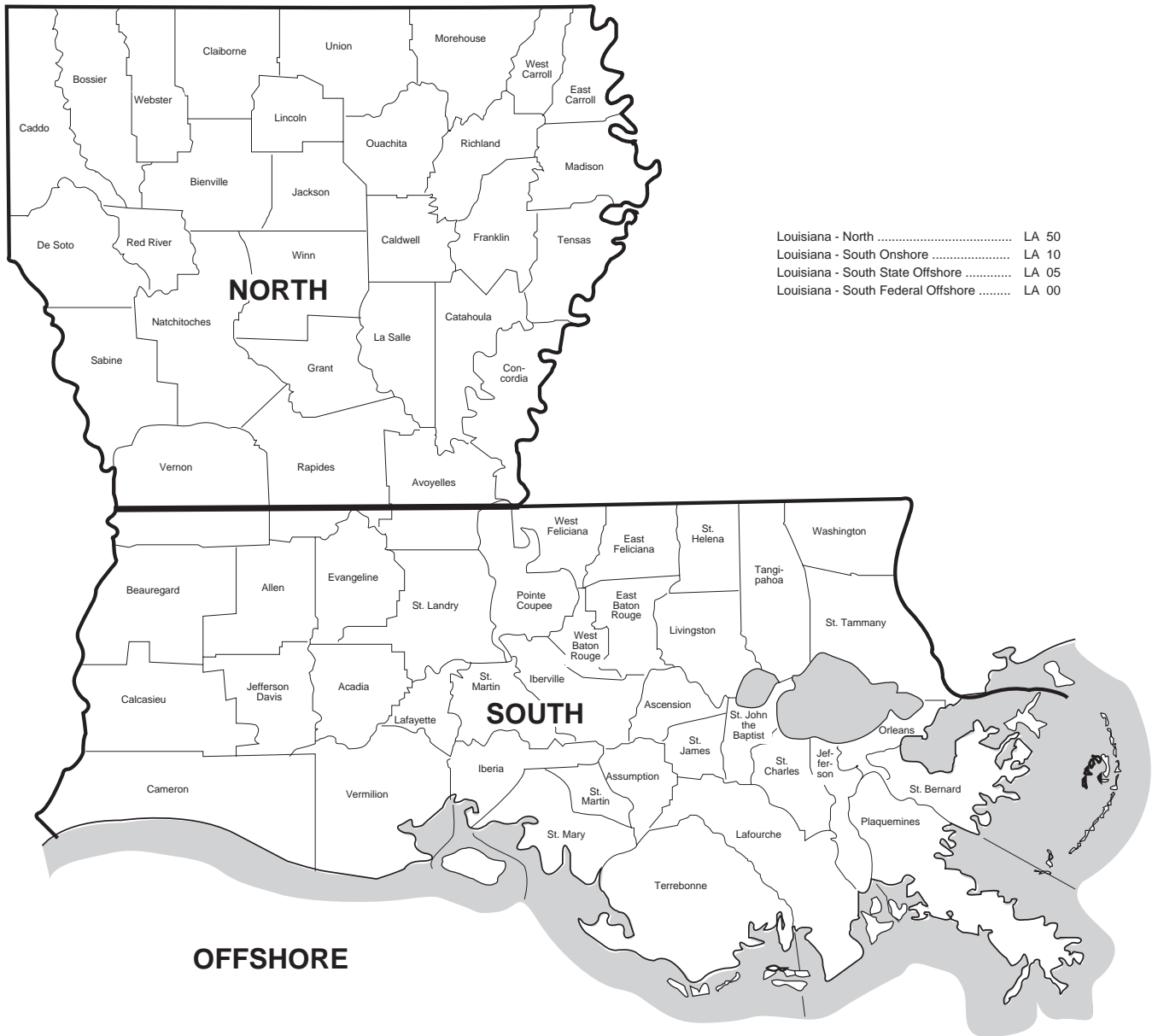
Source: Energy Information Administration, Office of Oil and Gas

Figure 5. Subdivisions of California



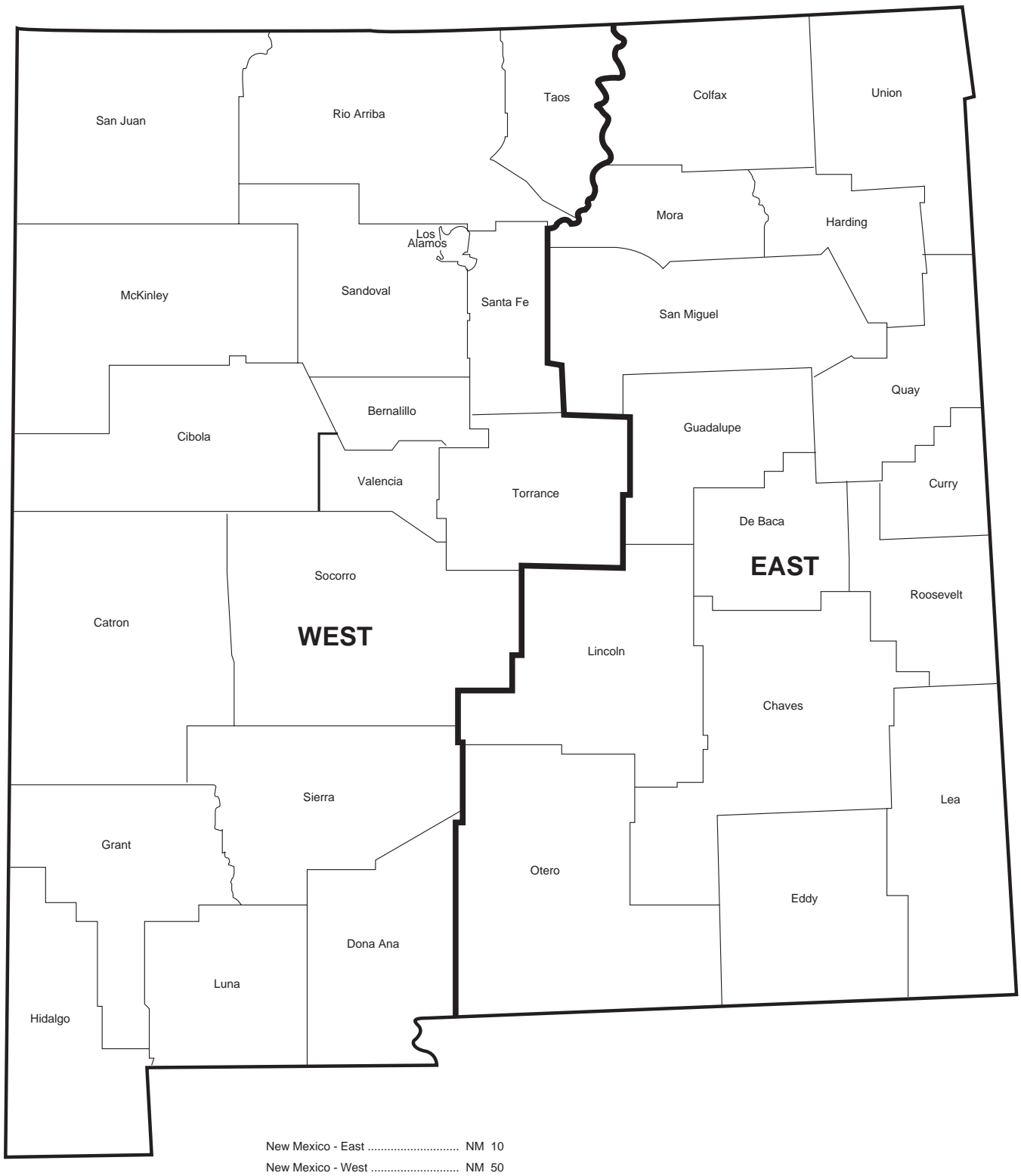
Source: Energy Information Administration, Office of Oil and Gas.

Figure 6. Subdivisions of Louisiana



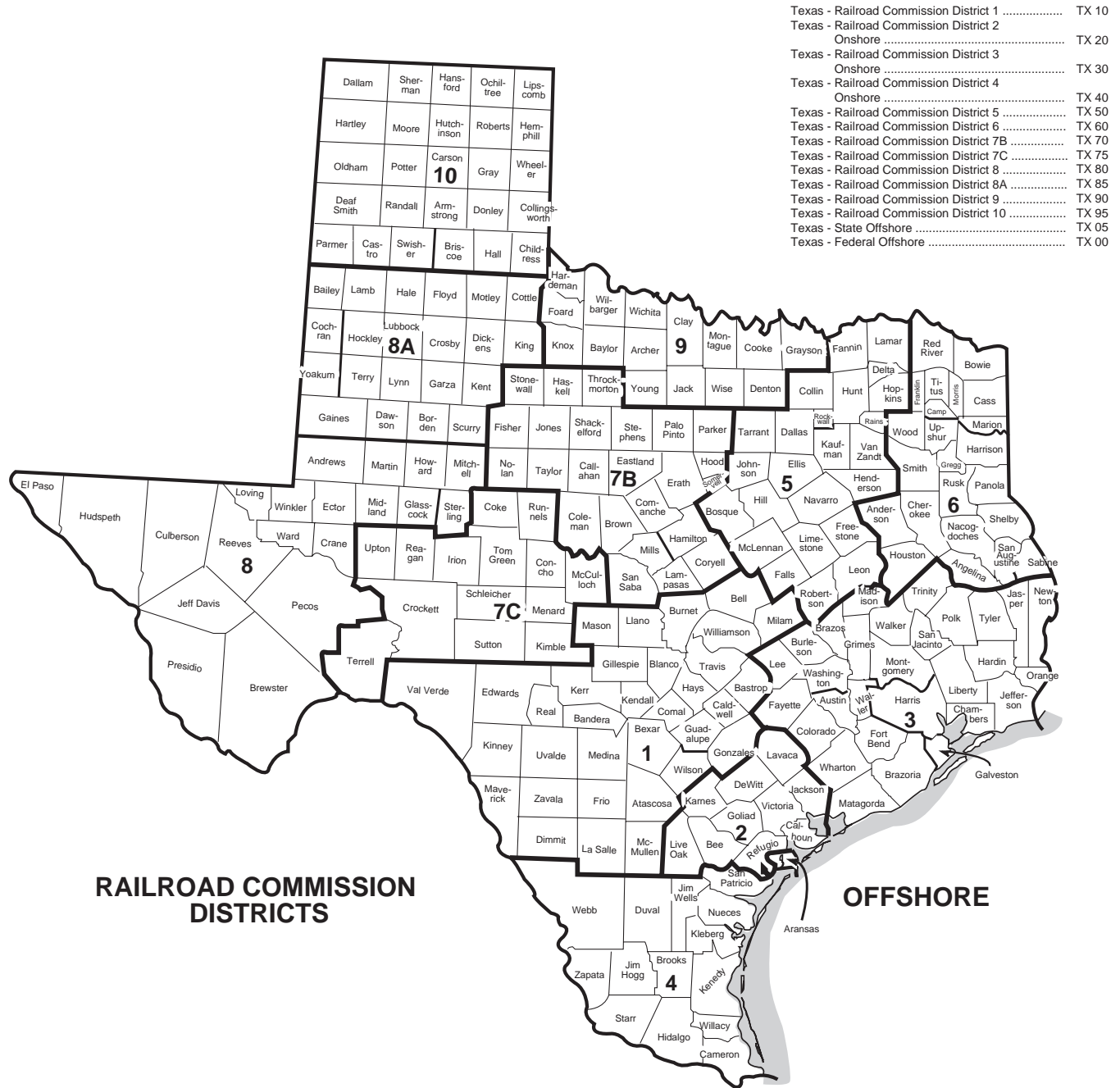
Source: Energy Information Administration, Office of Oil and Gas.

Figure 7. Subdivisions of New Mexico



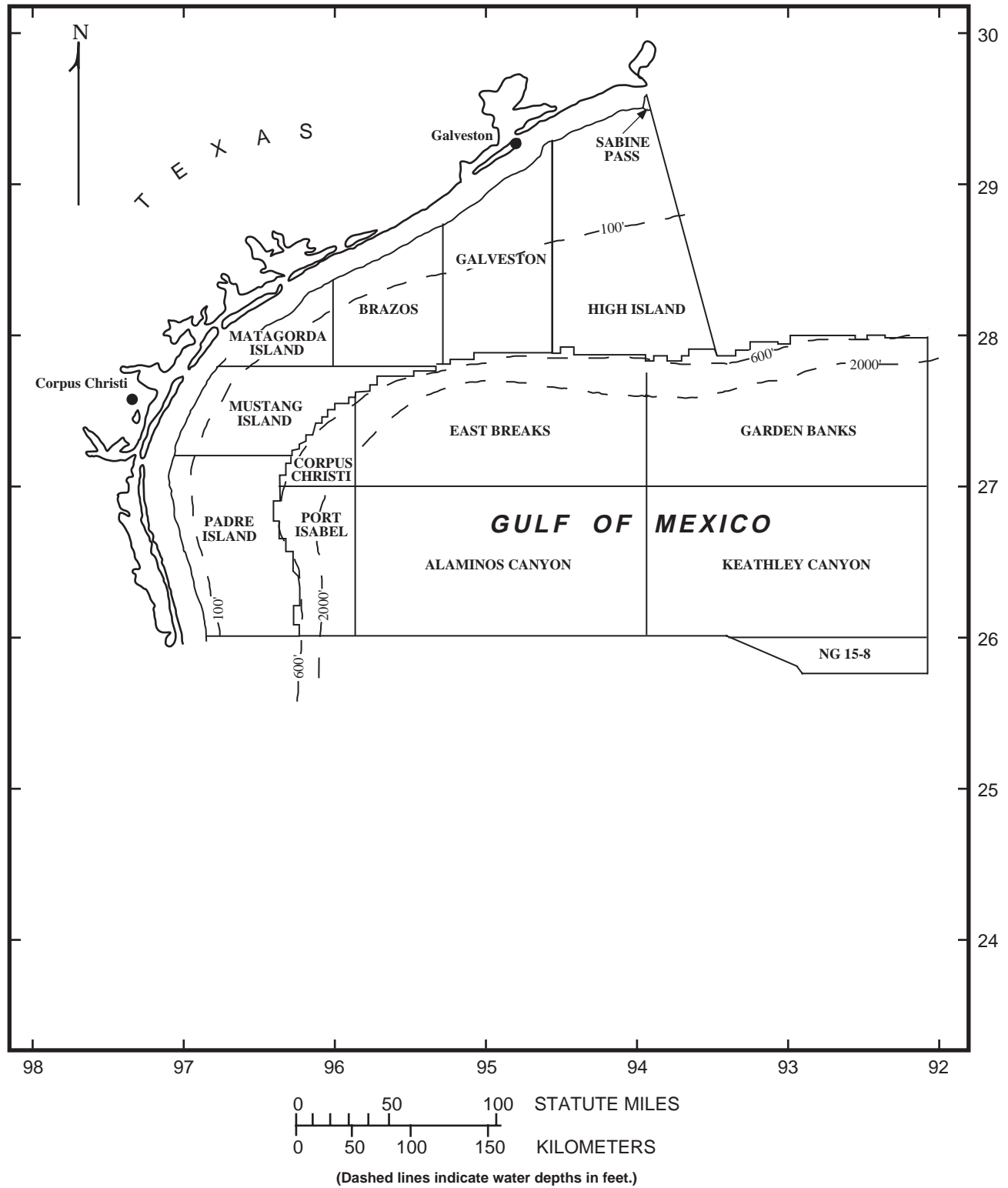
Source: Energy Information Administration, Office of Oil and Gas.

Figure 8. Subdivisions of Texas



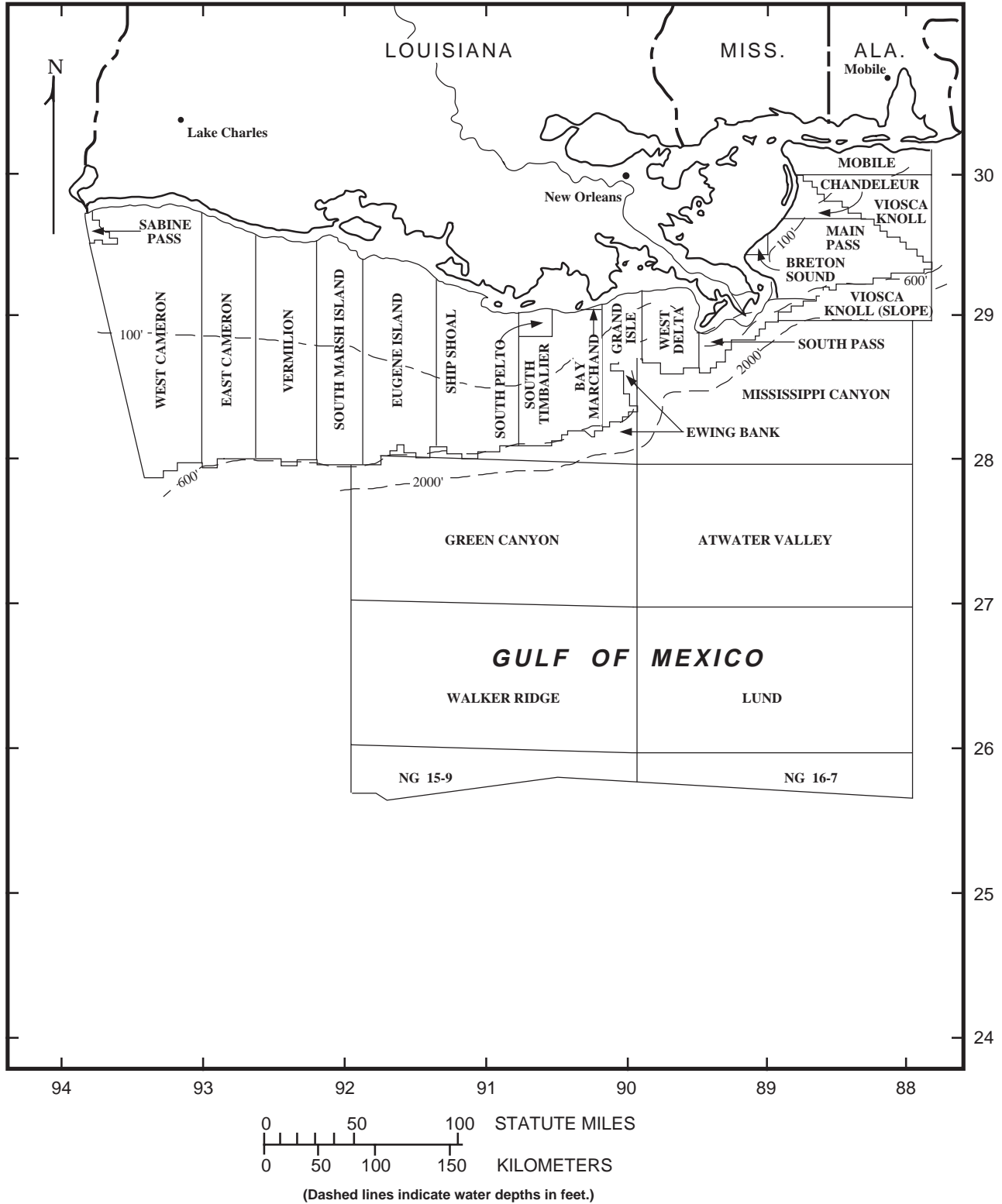
Source: Energy Information Administration, Office of Oil and Gas.

Figure 9. Western Planning Area, Gulf of Mexico Outer Continental Shelf Region



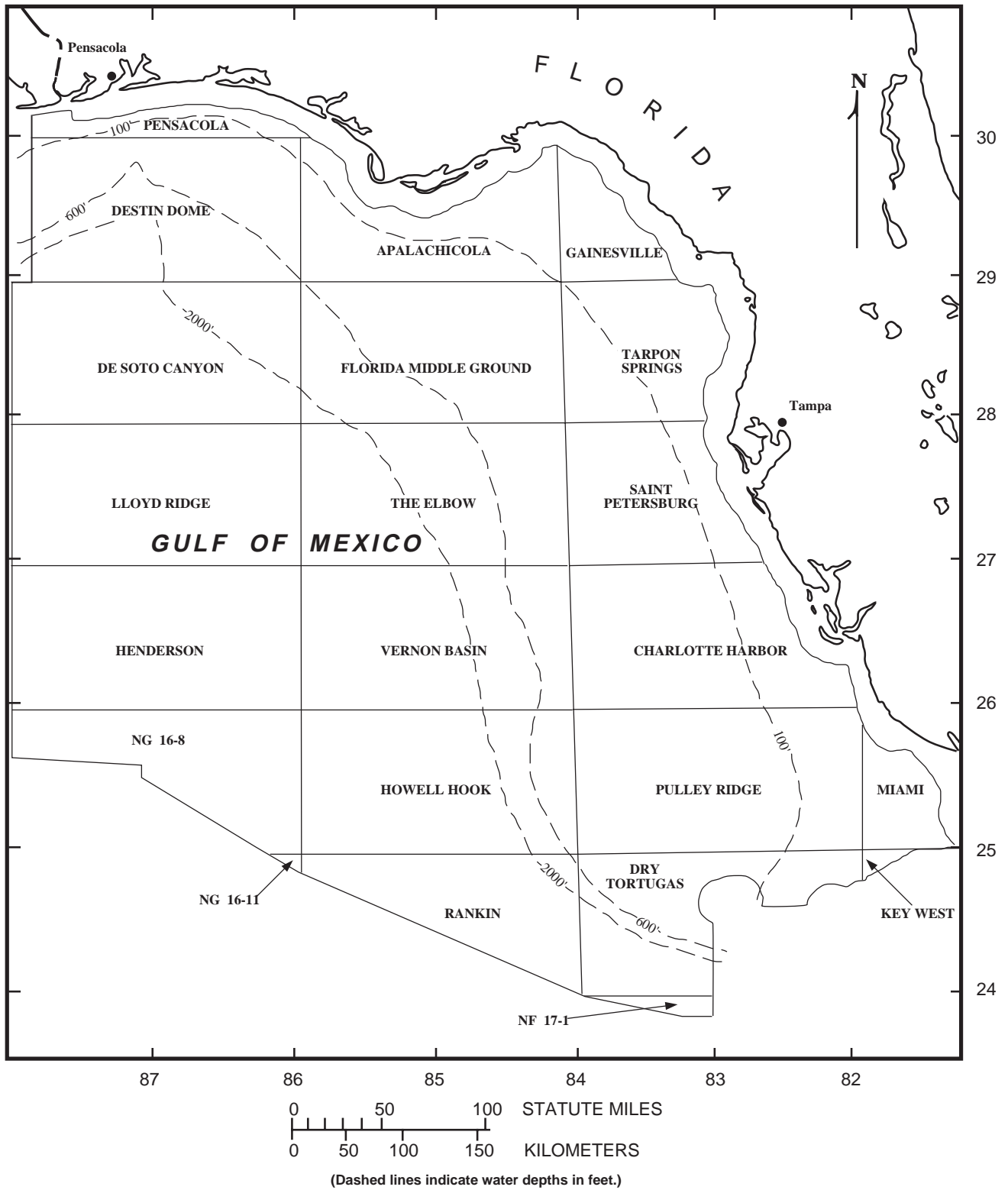
Source: Energy Information Administration, Office of Oil and Gas.

Figure 10. Central Planning Area, Gulf of Mexico Outer Continental Shelf Region



Source: Energy Information Administration, Office of Oil and Gas

Figure 11. Eastern Planning Area, Gulf of Mexico Outer Continental Shelf Region



Source: Energy Information Administration, Office of Oil and Gas

Glossary

This Glossary defines many of the technical terms used in this report.

Crude Oil: A mixture of hydrocarbons that exist in the liquid phase in natural underground reservoirs and remain liquid at atmospheric pressure after passing through surface separating facilities. Crude oil may also include:

- Small amounts of hydrocarbons that exist in the gaseous phase in natural underground reservoirs but are liquid at atmospheric pressure after being recovered from oil well (casinghead) gas in lease separators, and that subsequently are commingled with the crude stream without being separately measured.
- Small amounts of nonhydrocarbons produced with the oil.

Field: An area consisting of a single reservoir or multiple reservoirs all grouped on or related to the same individual geological structural feature and/or stratigraphic condition. There may be two or more reservoirs in a field which are separated vertically by intervening impervious strata, or laterally by local geologic barriers, or by both. (See **Reservoir**)

Field Area: A geographic area encompassing two or more pools that have a common gathering and metering system, the reserves of which are reported as a single unit. This concept applies primarily to the Appalachian region. (See **Pool**)

Field Discovery Year: The calendar year in which a field was first recognized as containing economically recoverable accumulations of oil and/or gas.

Natural Gas: A mixture of hydrocarbon compounds and small quantities of various nonhydrocarbons existing in the gaseous phase or in solution with crude oil in natural underground reservoirs at reservoir conditions. The principal hydrocarbons usually contained in the mixture are methane, ethane, propane, butane, and pentane. Typical nonhydrocarbon gases which may be present in reservoir natural gas are carbon dioxide, helium, hydrogen sulfide, and nitrogen. Under reservoir conditions, natural gas and the liquefiable portions occur either in a single gaseous phase in the reservoir or in solution with crude oil and are not distinguishable at the time as separate substances.

Pool: In general, a reservoir. In certain situations a pool may consist of more than one reservoir. (See **Field Area**)

Reservoir: A porous and permeable underground formation containing an individual and separate natural accumulation of producible hydrocarbons (oil and/or gas) which is confined by impermeable rock or water barriers and is characterized by a single natural pressure system.

Subdivision: A prescribed portion of a given State or other geographical region defined in this publication for statistical reporting purposes.