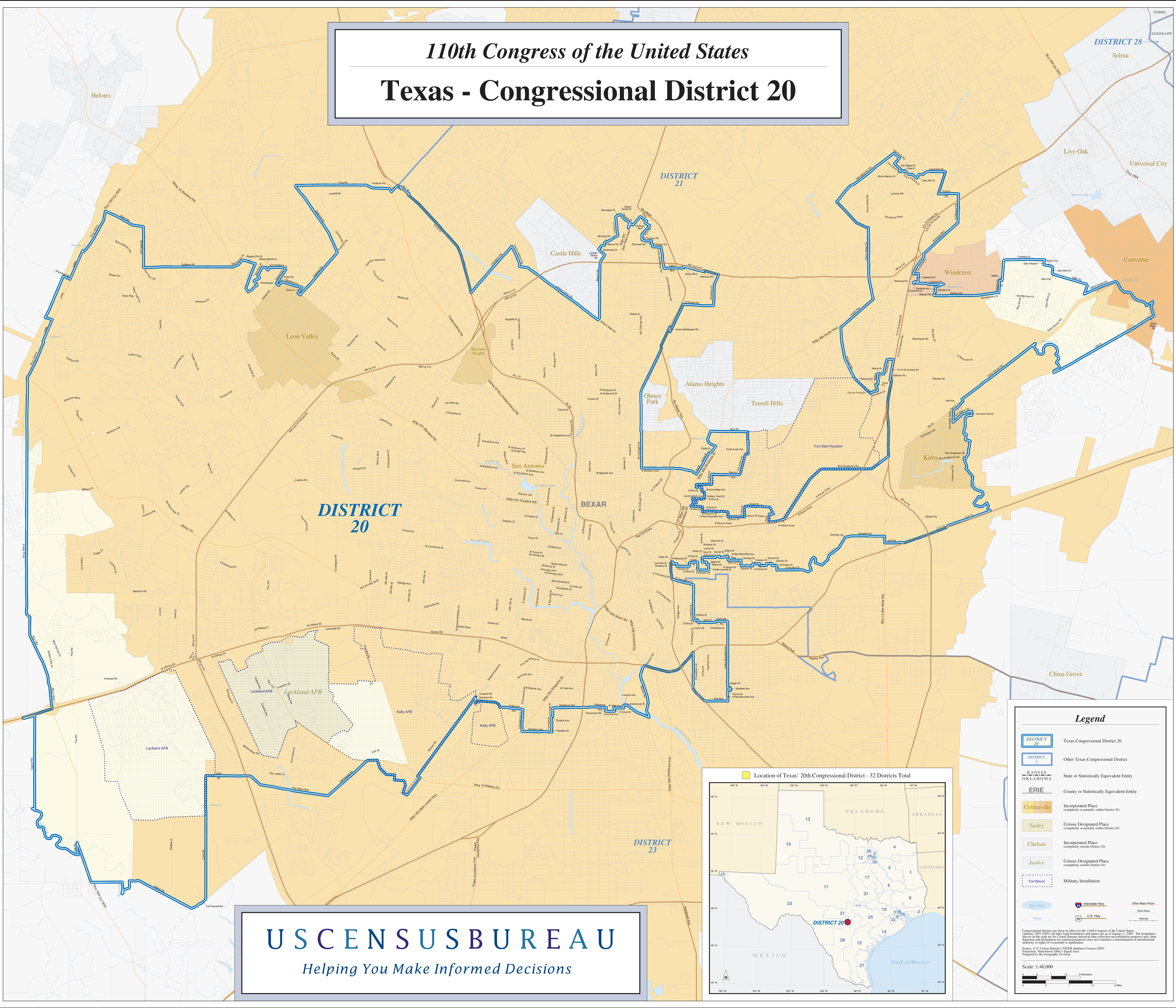
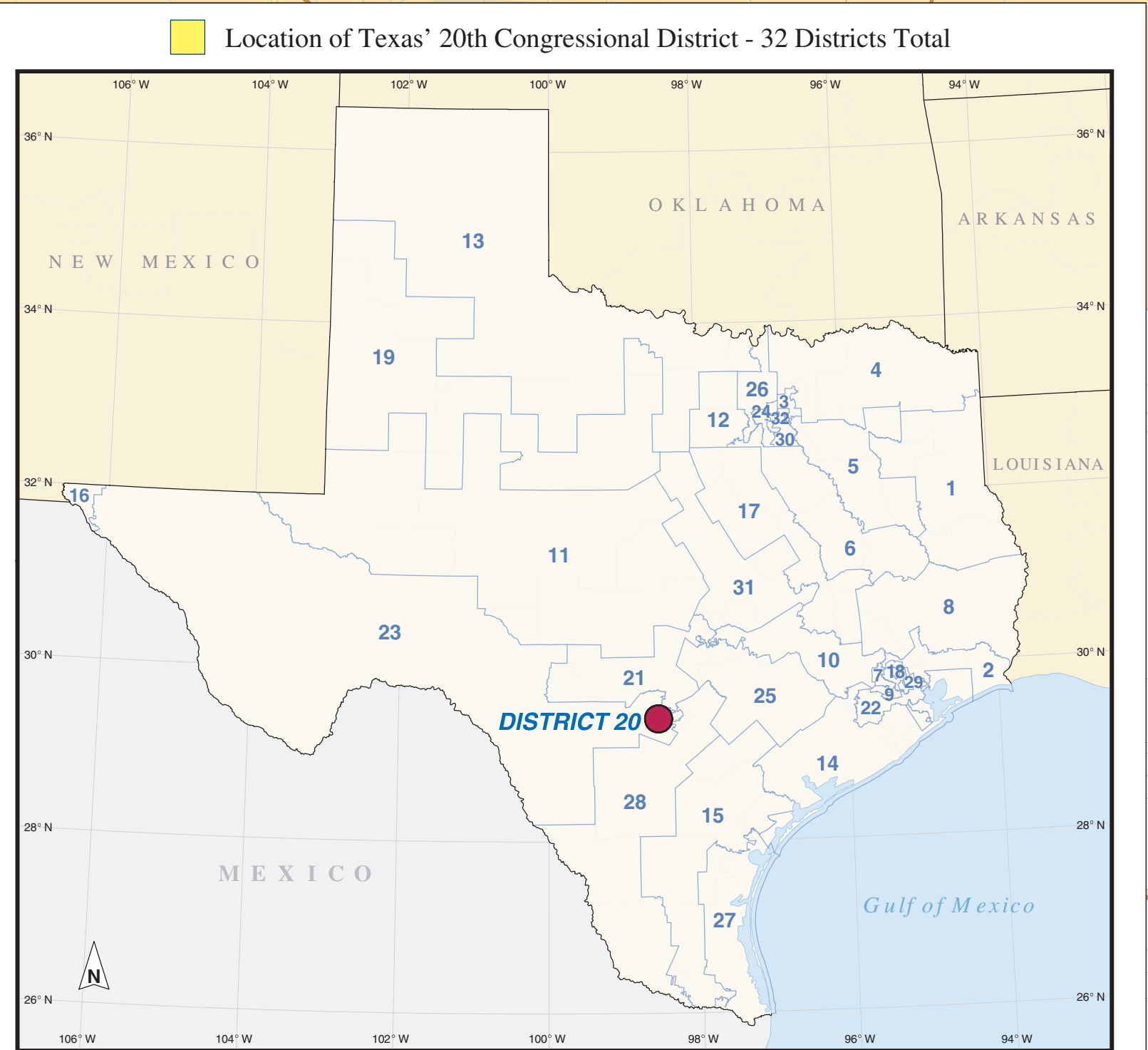


110th Congress of the United States

Texas - Congressional District 20



USCENSUS BUREAU
Helping You Make Informed Decisions



Legend

- DISTRICT 20 Texas Congressional District 20
- DISTRICT 2 Other Texas Congressional District
- KANSAS, OKLAHOMA State or Statistically Equivalent Entity
- ERIE County or Statistically Equivalent Entity
- Collinsville Incorporated Place (completely or partially within District 20)
- Turley Census Designated Place (completely or partially within District 20)
- Chelsea Incorporated Place (completely outside District 20)
- Justice Census Designated Place (completely outside District 20)
- Fort Belvoir Military Installation
- Water Body Water Body
- Interstate Hwy Interstate Hwy
- U.S. Hwy U.S. Hwy
- Other Major Road Other Major Road
- Other Road Other Road
- Railroad Railroad

Congressional districts are shown in effect for the 110th Congress of the United States (January 3, 2007 - January 3, 2009). All other boundaries and names are as of January 1, 2000. The boundaries shown on this map are for Census Bureau statistical data collection and tabulation purposes only; they do not constitute a determination of jurisdictional authority or rights of ownership or control.

Source: U.S. Census Bureau, 1990 and 2000 Census data. Equal Area Projection. State-based APO's Equal Area Projection by Geography Division.

Scale: 1:40,000