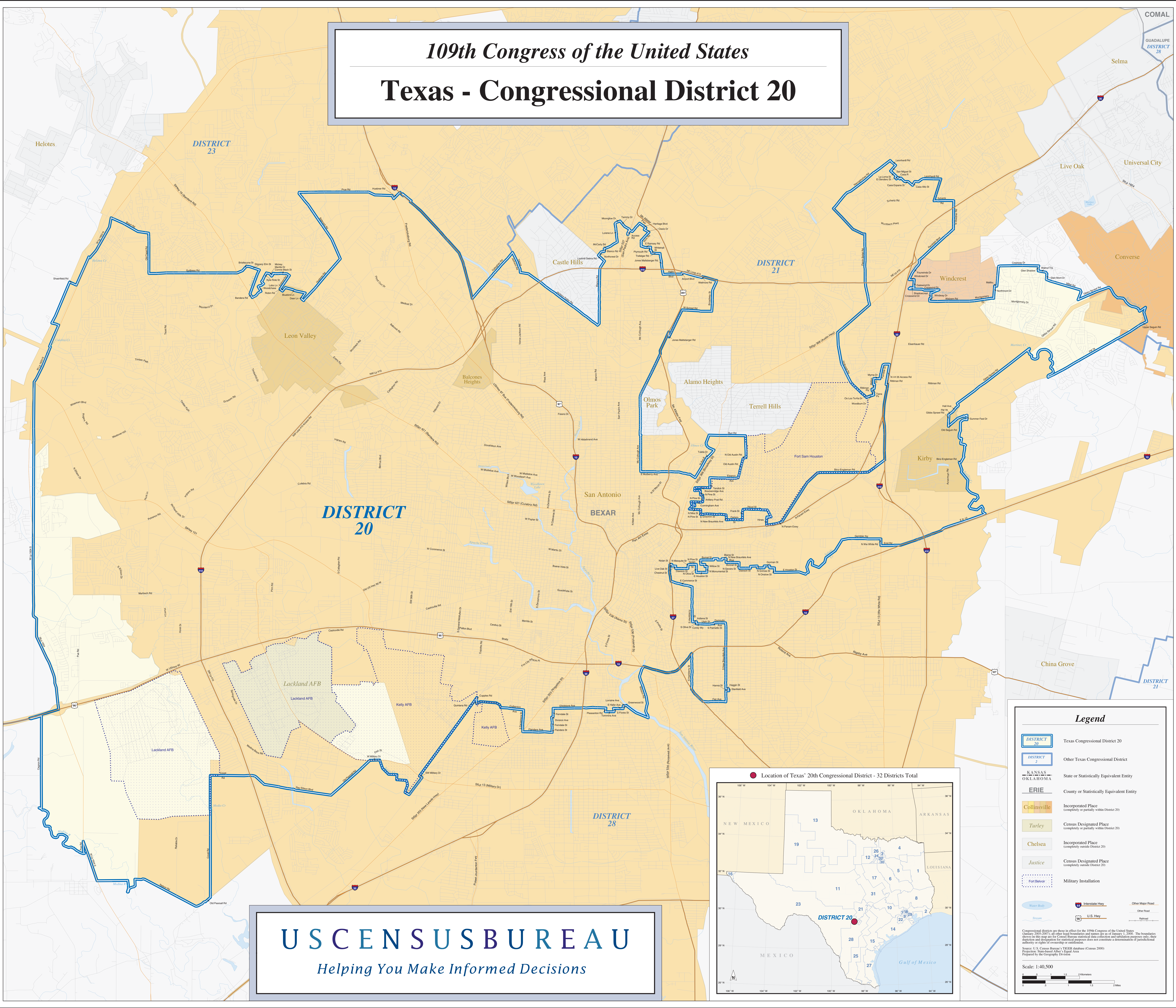
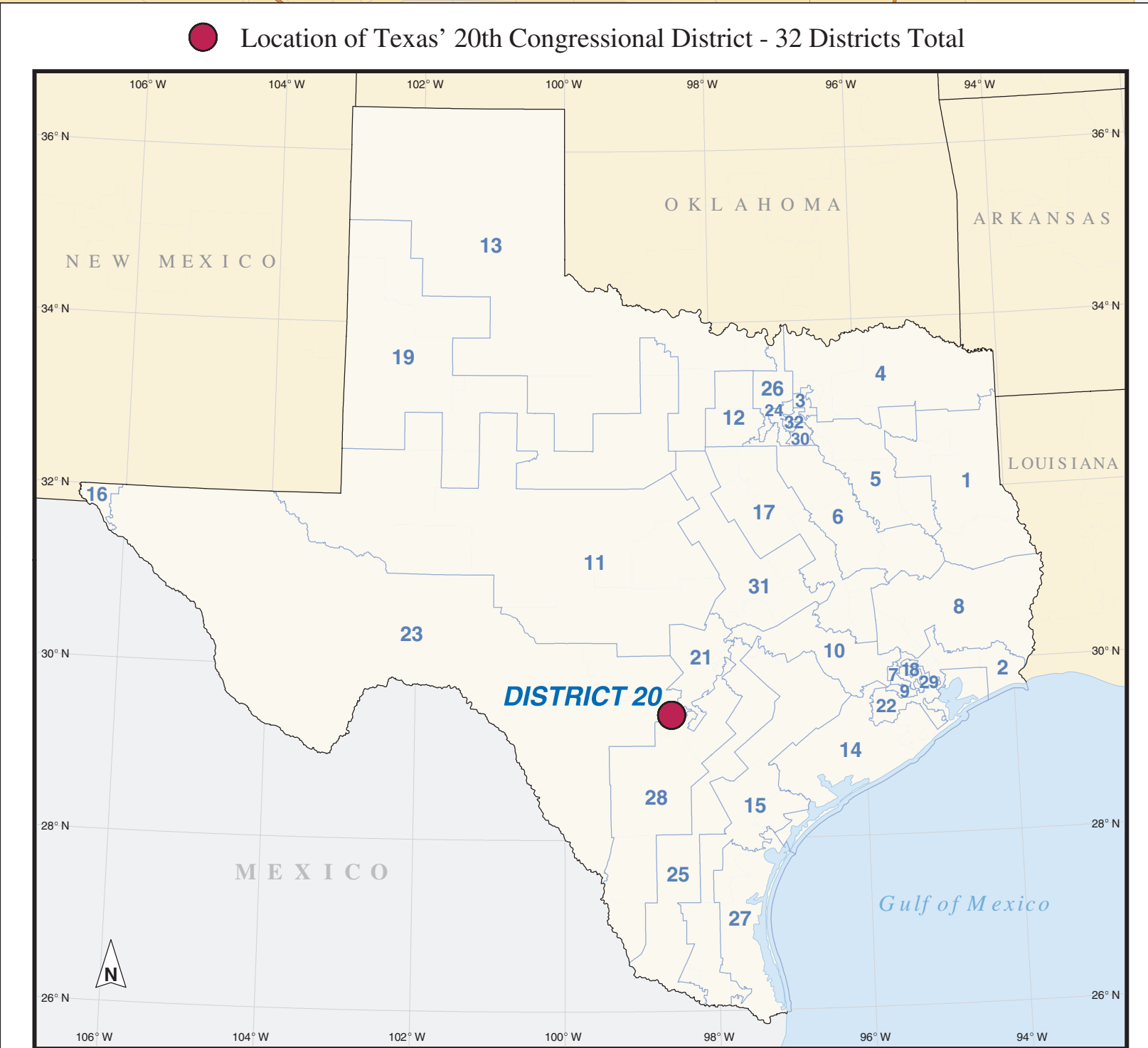


# 109th Congress of the United States

## Texas - Congressional District 20



**USCENSUS BUREAU**  
*Helping You Make Informed Decisions*



### Legend

- DISTRICT 20 Texas Congressional District 20
- DISTRICT 2 Other Texas Congressional District
- KANSAS, OKLAHOMA State or Statistically Equivalent Entity
- ERIE County or Statistically Equivalent Entity
- Collinsville Incorporated Place (completely or partially within District 20)
- Turley Census Designated Place (completely or partially within District 20)
- Chelsea Incorporated Place (completely outside District 20)
- Justice Census Designated Place (completely outside District 20)
- Fort Baker Military Installation
- Interstate Hwy
- U.S. Hwy
- Other Major Road
- Other Road
- Pathway
- Water Body
- Stream

Congressional districts are shown in effect for the 109th Congress of the United States (January 2005-2007) as they appear in the 2000 Census and as of January 1, 2005. The boundaries shown on this map are for Census Bureau statistical data collection and tabulation purposes only; their depiction and designation for statistical purposes does not constitute a determination of jurisdictional authority or rights of ownership or control.

Source: U.S. Census Bureau, 2000 Census of Population and Housing (Census 2000) Prepared by the Geography Division

Scale: 1:40,500