



## Infectious Prions in the Saliva and Blood of Deer with Chronic Wasting Disease

Candace K. Mathiason, *et al.*  
*Science* **314**, 133 (2006);  
DOI: 10.1126/science.1132661

**The following resources related to this article are available online at  
[www.sciencemag.org](http://www.sciencemag.org) (this information is current as of March 26, 2007):**

**Updated information and services**, including high-resolution figures, can be found in the online version of this article at:

<http://www.sciencemag.org/cgi/content/full/314/5796/133>

**Supporting Online Material** can be found at:

<http://www.sciencemag.org/cgi/content/full/314/5796/133/DC1>

This article **cites 25 articles**, 9 of which can be accessed for free:

<http://www.sciencemag.org/cgi/content/full/314/5796/133#otherarticles>

This article has been **cited by** 4 article(s) on the ISI Web of Science.

This article has been **cited by** 4 articles hosted by HighWire Press; see:

<http://www.sciencemag.org/cgi/content/full/314/5796/133#otherarticles>

This article appears in the following **subject collections**:

Medicine, Diseases

<http://www.sciencemag.org/cgi/collection/medicine>

Information about obtaining **reprints** of this article or about obtaining **permission to reproduce this article** in whole or in part can be found at:

<http://www.sciencemag.org/about/permissions.dtl>

abnormal hyperphosphorylation of TDP-43 might play a role in FTLN-U pathogenesis. Because UBIs are defined by ubiquitin immunohistochemistry, we asked whether TDP-43 recovered from urea fractions of FTLN-U brains is ubiquitinated, and this was shown to be the case by immunoprecipitation studies using the rabbit polyclonal anti-TDP-43 followed by immunoblot analyses with both anti-TDP-43 and ubiquitin antibodies (Fig. 3D).

FTLN-U and ALS have been suggested to be part of a clinicopathological spectrum (23), sharing similar pathogenic mechanisms that affect different populations of CNS neurons. We examined classic ALS cases for the presence of TDP-43-positive UBIs (table S1, nos. 54 to 72). Although none of the inclusions typical of ALS were detected by mAbs 182 and 406, all UBIs (including skeinlike, round, and Lewy body-like inclusions) in motor neurons of ALS were robustly double-labeled by TDP-43 and ubiquitin antibodies (Fig. 4, A to F) and by single-label TDP-43 immunohistochemistry (Fig. 4, G to I). A significant number of ALS patients demonstrate UBIs in hippocampus and frontal and temporal cortex (23), which were also immunolabeled by TDP-43 (Fig. 4, J and K).

Immunoblots of urea fractions of spinal cord as well as frontal and temporal cortices of ALS cases demonstrated a disease-specific signature for TDP-43 similar to that described above for FTLN-U (Fig. 4L). Dephosphorylation of the urea fractions showed that the 45-kD band in ALS corresponds to pathologically hyperphosphorylated TDP-43 as in FTLN-U (Fig. 4M). However, because the presence of UBIs in ALS cases is more variable than their presence in FTLN-U, not all brain regions examined in all cases exhibited pathological TDP-43.

These studies identify TDP-43 as the major disease protein in the signature UBIs of FTLN-U and ALS. Although pathologically altered TDP-43 proteins were present in all sporadic and familial FTLN-U as well as ALS cases, there were subtle differences in these abnormal TDP-43 variants among the three FTLN-U subtypes, which may be the result of similar but not identical pathogenic mechanisms. The differential distribution of UBIs detected by ubiquitin antibodies in FTLN-U subtypes (18) supports this view.

TDP-43 is a ubiquitously expressed, highly conserved nuclear protein (24) that may be a transcription repressor and an activator of exon skipping (21, 25, 26) as well as a scaffold for nuclear bodies through interactions with survival motor neuron protein (27). TDP-43 is normally localized primarily to the nucleus, but our data indicate that, under pathological conditions in FTLN-U, TDP-43 is eliminated from nuclei of UBI-bearing neurons, a consequence of which may be a loss of TDP-43 nuclear functions. Moreover, nuclear UBIs are rare in sporadic FTLN-U because most pathological TDP-43 accumulates in neuronal cell bodies or their

processes, and it is unclear whether physiological TDP-43 is present at significant quantities in the cytoplasm, axons, and dendrites of normal neurons. Lastly, both FTDP-17U pedigrees examined here contain *PGRN* gene mutations (11), but the relation between TDP-43 and *PGRN*, which encodes a secreted growth factor involved in the regulation of multiple processes in development, wound repair, and inflammation (28), remains unclear.

The identification of TDP-43 as the major component of UBIs specific to sporadic and familial FTLN-U as well as sporadic ALS resolves a long-standing enigma concerning the nature of the ubiquitinated disease protein in these disorders. Thus, these diseases may represent a spectrum of disorders that share similar pathological mechanisms, culminating in the progressive degeneration of different selectively vulnerable neurons. These insights into the molecular pathology of FTLN-U and ALS can accelerate efforts to develop better therapies for these disorders.

#### References and Notes

1. M. S. Forman, J. Q. Trojanowski, V. M.-Y. Lee, *Nat. Med.* **10**, 1055 (2004).
2. J. R. Hodges *et al.*, *Ann. Neurol.* **56**, 399 (2004).
3. A. M. Lipton, C. L. White III, E. H. Bigio, *Acta Neuropathol. (Berlin)* **108**, 379 (2004).
4. J. K. Johnson *et al.*, *Arch. Neurol.* **62**, 925 (2005).
5. J. Shi *et al.*, *Acta Neuropathol. (Berlin)* **110**, 501 (2005).
6. M. S. Forman *et al.*, *Ann. Neurol.* **59**, 952 (2006).
7. G. M. McKhann *et al.*, *Arch. Neurol.* **58**, 1803 (2001).
8. M. Grossman, *J. Int. Neuropsychol. Soc.* **8**, 566 (2002).

9. D. Neary *et al.*, *Neurology* **51**, 1546 (1998).
10. C. Lomen-Hoerth, T. Anderson, B. Miller, *Neurology* **59**, 1077 (2002).
11. M. Baker *et al.*, *Nature* **442**, 916 (2006).
12. M. Cruts *et al.*, *Nature* **442**, 920 (2006).
13. P. Poorkaj *et al.*, *Ann. Neurol.* **43**, 815 (1998).
14. M. Hutton *et al.*, *Nature* **393**, 702 (1998).
15. R. Rademakers *et al.*, *Mol. Psychiatry* **7**, 1064 (2002).
16. I. R. Mackenzie *et al.*, *Brain* **129**, 853 (2006).
17. C. L.endon *et al.*, *Neurology* **50**, 1546 (1998).
18. D. M. Sampathu *et al.*, *Am. J. Pathol.*, in press.
19. Materials and methods are available as supporting material on Science Online.
20. S. H. Ou, F. Wu, D. Harrich, L. F. Garcia-Martinez, R. B. Gaynor, *J. Virol.* **69**, 3584 (1995).
21. E. Buratti *et al.*, *EMBO J.* **20**, 1774 (2001).
22. H. Y. Wang, I. F. Wang, J. Bose, C. K. Shen, *Genomics* **83**, 130 (2004).
23. I. R. Mackenzie, H. H. Feldman, *J. Neuropathol. Exp. Neurol.* **64**, 730 (2005).
24. Y. M. Ayala *et al.*, *J. Mol. Biol.* **348**, 575 (2005).
25. P. A. Mercado, Y. M. Ayala, M. Romano, E. Buratti, F. E. Baralle, *Nucleic Acids Res.* **33**, 6000 (2005).
26. E. Buratti, A. Brindisi, F. Pagani, F. E. Baralle, *Am. J. Hum. Genet.* **74**, 1322 (2004).
27. I. F. Wang, N. M. Reddy, C. K. Shen, *Proc. Natl. Acad. Sci. U.S.A.* **99**, 13583 (2002).
28. Z. He, A. Bateman, *J. Mol. Med.* **1**, 600 (2003).
29. We thank the Penn Proteomics Core Facility for the LC-MS/MS and M. Forman for critical comments on the manuscript. This work was funded by NIH (grants AG10124, AG17586, and T32 AG00255) and German Brain Bank "Brain-Net" (grant 01GI0299).

#### Supporting Online Material

www.sciencemag.org/cgi/content/full/314/5796/130/DC1  
Material and Methods  
Figs. S1 to S3  
Table S1  
References

21 August 2006; accepted 8 September 2006  
10.1126/science.1134108

## Infectious Prions in the Saliva and Blood of Deer with Chronic Wasting Disease

Candace K. Mathiason,<sup>1</sup> Jenny G. Powers,<sup>3</sup> Sallie J. Dahmes,<sup>4</sup> David A. Osborn,<sup>5</sup> Karl V. Miller,<sup>5</sup> Robert J. Warren,<sup>5</sup> Gary L. Mason,<sup>1</sup> Sheila A. Hays,<sup>1</sup> Jeanette Hayes-Klug,<sup>1</sup> Davis M. Seelig,<sup>1</sup> Margaret A. Wild,<sup>3</sup> Lisa L. Wolfe,<sup>6</sup> Terry R. Spraker,<sup>1,2</sup> Michael W. Miller,<sup>6</sup> Christina J. Sigurdson,<sup>1</sup> Glenn C. Telling,<sup>7</sup> Edward A. Hoover<sup>1\*</sup>

A critical concern in the transmission of prion diseases, including chronic wasting disease (CWD) of cervids, is the potential presence of prions in body fluids. To address this issue directly, we exposed cohorts of CWD-naïve deer to saliva, blood, or urine and feces from CWD-positive deer. We found infectious prions capable of transmitting CWD in saliva (by the oral route) and in blood (by transfusion). The results help to explain the facile transmission of CWD among cervids and prompt caution concerning contact with body fluids in prion infections.

The prion diseases, or transmissible spongiform encephalopathies (TSEs), are chronic, degenerative, neurological diseases with uniformly fatal outcomes. TSEs are characterized by the conversion of the normal cellular prion protein (PrP<sup>c</sup>) to an aberrant

insoluble partially protease-resistant isoform (PrP<sup>res</sup>). CWD, a transmissible spongiform encephalopathy of cervids (deer, elk, and moose), was first observed in the 1960s in captive deer and free-ranging deer and elk in northeastern Colorado and southeastern

Wyoming (1–4). CWD has now been identified in 14 states in the United States and two Canadian provinces. Despite its facile transmission, the exact mode of CWD infection has not been determined. Indeed, surprisingly little is known about the transmission of naturally occurring TSEs. For example, scrapie in sheep has been recognized for centuries, yet the precise mode of natural transmission remains unclear (5, 6).

To determine whether infectious prions capable of transmitting CWD are present in body fluids and excreta of CWD-infected deer (CWD+), we exposed four cohorts (numbered 1 to 4,  $n = 3$  to 4 per cohort) of 6-month-old CWD-naïve hand-raised white-tailed deer (*Odocoileus virginianus*) fawns from Georgia, United States (Table 1) to blood, saliva, a combination of urine and feces, or brain from free-ranging or captive CWD+ mule deer (*Odocoileus hemionus*) from Colorado, United States (tables S1 and S2). A control cohort (cohort 5,  $n = 2$ ) received matching inocula collected from confirmed CWD-negative white-tailed deer (*O. virginianus*) from Georgia, United States. Because polymorphism in the normal prion protein gene (PRNP) may influence CWD susceptibility or incubation time in white-tailed deer, PRNP codon 96 genotype for each deer was determined (table S2) (7).

The deer fawns were housed in separate isolation suites under strict isolation conditions to exclude adventitious sources of prion exposure [supporting online material (SOM) text], thus permitting conclusions based on only the point-source exposure. After inoculation, the deer were monitored for CWD infection by serial tonsil biopsy performed at 0, 3, 6, and 12 months postinoculation (pi), and at termination (18 to 22 months pi). Equal portions of tissue were collected and stored (–70°C or fixed in 10% formalin) at each serial collection time point (tonsil) and at study termination (palantine tonsil, brain, and retropharyngeal lymph nodes) for the detection of the protease-resistant abnormal prion protein associated with CWD (PrP<sup>CWD</sup>) (8).

Serial tonsil biopsy of each recipient deer revealed that infectious CWD prions were present in saliva and blood from CWD+ donor deer (Table 2). As expected, PrP<sup>CWD</sup> was demonstrated between 3 and 12 months pi in tonsil

biopsies of all four animals inoculated either orally or intracranially with CWD+ brain (cohort 4). More notably, PrP<sup>CWD</sup> was detected in tonsil biopsies of two of three deer each in both the saliva and blood cohorts (numbers 1 and 2) at 12 months pi. By contrast, deer in the urine and feces inoculation cohort 3 remained tonsil biopsy negative for PrP<sup>CWD</sup> throughout the 18-month study. Animals in the negative control inoculation cohort 5 also remained tonsil biopsy negative throughout the study.

Deer cohorts 1 (blood), 2 (saliva), and 3 (urine and feces) were electively euthanized at 18 months pi to permit whole-body examination for PrP<sup>CWD</sup>. The greatest scrutiny was directed toward those tissues previously established to have highest frequency of PrP<sup>CWD</sup> deposition in infected deer and generally regarded as the most sensitive indicators of infection—medulla oblongata and other brainstem regions, tonsil, and retropharyngeal lymph node. We found unequivocal evidence of PrP<sup>CWD</sup> in brain and lymphoid tissue of all six tonsil biopsy-positive deer in cohorts 1 (blood) and 2 (saliva), whereas all deer in cohorts 3 and 5 were neg-

ative for PrP<sup>CWD</sup> in all tissues (Table 2 and Figs. 1 and 2).

The transmission of CWD by a single blood transfusion from two symptomatic and one asymptomatic CWD+ donor is important in at least three contexts: (i) It reinforces that no tissue from CWD-infected cervids can be considered free of prion infectivity; (ii) it poses the possibility of hematogenous spread of CWD, such as through insects; and (iii) it provides a basis for seeking in vitro assays sufficiently sensitive to demonstrate PrP<sup>CWD</sup> or alternate prion protein conformers in blood—one of the grails of prion biology and epidemiology.

The identification of blood-borne prion transmission has been sought before with mixed results (9–11). Bovine spongiform encephalopathy and scrapie have been transmitted to naïve sheep through the transfer of 500 ml of blood or buffy coat white blood cells from infected sheep (12, 13). In addition, limited but compelling evidence argues for the transmission of variant Creutzfeldt-Jakob disease (vCJD) through blood from asymptomatic donors (14–16). Even in sporadic CJD, PrP<sup>Res</sup> has been found in periph-

**Table 1.** CWD prion bioassay inoculation cohorts. Cohort 1 fawns received either a single intraperitoneal (IP) inoculation of 250 ml of frozen citrated blood ( $n = 2$ ) or an intravenous (IV) transfusion with 250 ml fresh citrated whole blood ( $n = 1$ ) each from a single CWD+ donor. Cohort 2 fawns received a total of 50 ml saliva, each from a different CWD+ donor, orally (PO) in three doses over a 3-day period. Cohort 3 fawns received a total of 50 ml urine and 50 g of feces PO, each from a different CWD+ donor, in divided doses over a 3- to 14-day period. As positive controls, cohort 4 fawns were inoculated with a 10% brain homogenate from a CWD+ donor deer through either a single intracranial (IC) injection of 1 g equivalent of brain ( $n = 2$ ) or PO with a total of 10 g equivalents of brain ( $n = 2$ ) divided over a 3-day period. Cohort 5 fawns ( $n = 2$ ) were inoculated with equivalent amounts of each of the above materials from a single CWD-negative donor deer to serve as negative controls for the study.

Animal cohort	<i>n</i>	Inoculum	Route ( <i>n</i> )	Amount	No. of inoculations
1	3	Blood	IV (1), IP (2)	250 ml	1
2	3	Saliva	PO (3)	50 ml	3
3	3	Urine and feces	PO (3)	50 ml + 50 g	3 to 14
4	4	Brain	IC (2), PO (2)	1 g (IC), 10 g (PO)	1 (IC), 3 (PO)
5	2	All of the above	PO (2)	All of the above	1 to 14

**Table 2.** PrP<sup>CWD</sup> detection by longitudinal tonsil biopsy and necropsy of deer exposed to body fluids or excreta from CWD+ deer. PrP<sup>CWD</sup> assay results for tonsil (T), brain (B) (medulla oblongata at obex), and retropharyngeal lymph node (RLN) are shown. The number of deer in which PrP<sup>CWD</sup> was detected (8) is shown over the total number of deer in the cohort. One of the three original animals inoculated with urine and feces was euthanized prematurely 61 days pi due to a bacterial infection. The deer in cohorts 1, 2, and 3 were terminated at 18 months (mo.) pi. Two of the four cohort 4 deer were terminated at 20 and 21 months pi. The two cohort 5 deer were terminated at 22 months pi.

Animal cohort	Inoculum	Biopsy collection					
		3 mo. (T)	6 mo. (T)	12 mo. (T)	Termination		
					T	B	RLN
1	Blood	0/3	0/3	2/3	3/3	2/3	3/3
2	Saliva	0/3	0/3	2/3	3/3	2/3	3/3
3	Urine and feces	0/2	0/2	0/2	0/2	0/2	0/2
4	Brain	1/4	2/4	4/4	2/2	2/2	2/2
5	Negative samples	0/2	0/2	0/2	0/2	0/2	0/2

<sup>1</sup>Department of Microbiology, Immunology, and Pathology, <sup>2</sup>Veterinary Diagnostic Laboratory, College of Veterinary Medicine and Biological Sciences (CVMB), Colorado State University (CSU), Fort Collins, CO 80523, USA. <sup>3</sup>Biological Resource Management Division, National Park Service, Fort Collins, CO 80525, USA. <sup>4</sup>Wildlife Artist Supply Company (WASCO) Inc., Monroe, GA 30655, USA. <sup>5</sup>Warnell School of Forestry and Natural Resources, University of Georgia, Athens, GA 30609, USA. <sup>6</sup>Wildlife Research Center, Colorado Division of Wildlife, Fort Collins, CO 80526, USA. <sup>7</sup>Department of Microbiology, Immunology and Molecular Genetics, University of Kentucky, Lexington, KY 40536, USA.

\*To whom correspondence should be addressed. E-mail: edward.hoover@colostate.edu

Downloaded from www.sciencemag.org on March 26, 2007



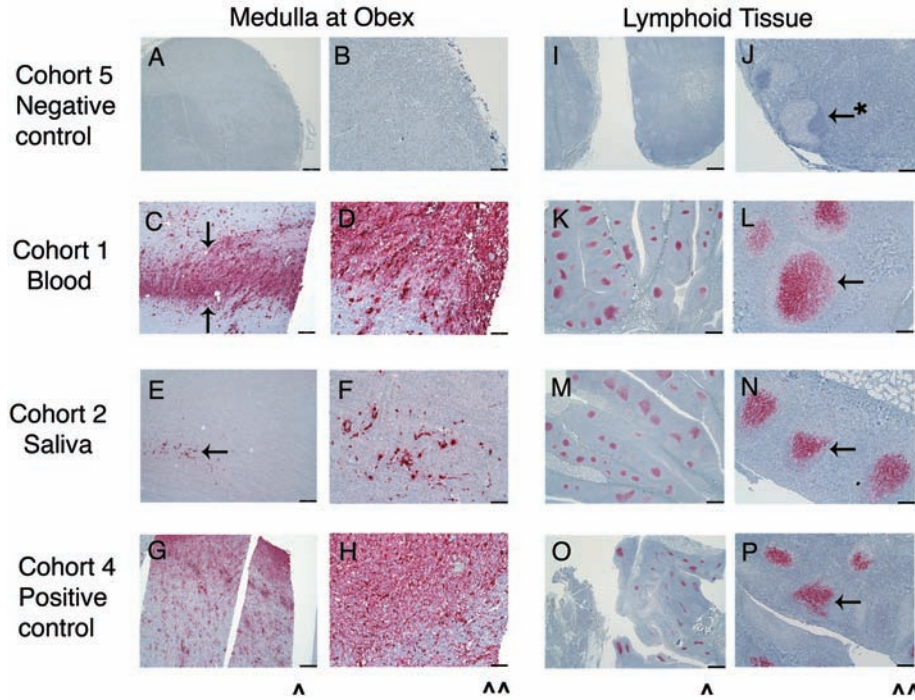
eral organs of some patients (17). The present work helps establish that prion diseases can be transmitted through blood.

The presence of infectious CWD prions in saliva may explain the facile transmission of CWD. Cervid-to-cervid interactions (SOM text), especially in high density and captive situations, would be expected to facilitate salivary cross-contact (11, 18, 19). Salivary dissemination of prions may not be limited to CWD. Protease-

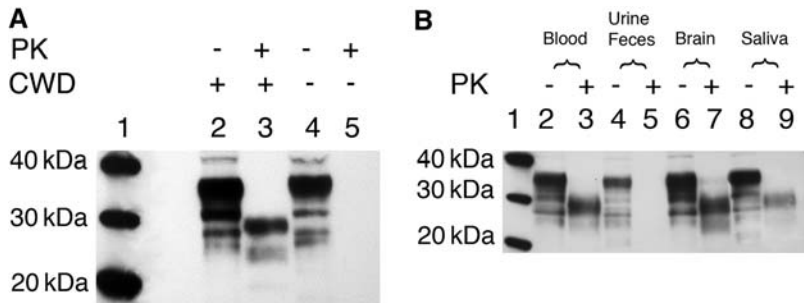
resistant prion protein has been demonstrated in the oral mucosa, taste buds, lingual epithelium, vomeronasal organ, and olfactory mucosa of hamsters infected with transmissible mink encephalopathy (19) and ferrets infected with CWD (20). Although no instance of CWD transmission to humans has been detected, the present results emphasize the prudence of using impervious gloves during contact with saliva or blood of cervids that may be CWD-infected.

Environmental contamination by excreta from infected cervids has traditionally seemed the most plausible explanation for the dissemination of CWD (21). However, we could not detect PrP<sup>CWD</sup> in cohort 3 deer inoculated repeatedly with urine and feces from CWD+ deer and examined up to 18 months pi (Table 2). There are several reasons to view this negative finding cautiously, including small sample size, elective preclinical termination, and potential variation in individual susceptibility that may be associated with the 96 G/S polymorphism in the PRNP gene (7, 22). Although no genotype of white-tailed deer is resistant to CWD infection, PRNP genotypes S/S or G/S at codon 96 appear to have reduced susceptibility manifest by longer survival (7). Both deer in cohort 3 (urine and feces) were subsequently shown to be of the PRNP 96 G/S genotype. Thus, it is possible, although we think unlikely, that these deer had a prolonged incubation period (>18 months pi) before the amplification of PrP<sup>CWD</sup> became detectable in tissues. Recent studies have shown that PrP<sup>res</sup> is poorly preserved after incubation with intestinal or fecal content (23, 24). Further research using cervid and surrogate cervid PrP transgenic mice (25) are indicated to continue to address the presence of infectious CWD prions in excreta of CWD+ deer and to provide a more substantial basis for reconsideration of the assumption that excreta are the chief vehicle for CWD dissemination and transmission.

The results reported here provide a plausible basis for the efficient transmission of CWD in nature. We demonstrate that blood and saliva in particular are able to transmit CWD to naïve deer and produce incubation periods consistent with those observed in naturally acquired infections (3, 26). The time from exposure to first detection of PrP<sup>CWD</sup> by tonsil biopsy was variable—as short as 3 months but as long as 18 months (likely underestimates due to sampling frequency). The results also reinforce a cautious view of the exposure risk presented by body fluids, excreta, and all tissues from CWD+ cervids.



**Fig. 1.** PrP<sup>CWD</sup> demonstrated by immunohistochemistry in tonsil, brain (medulla oblongata at obex), and retropharyngeal lymph node of deer receiving saliva or blood from CWD-infected donors. CWD immunohistochemistry is shown in the medulla at obex (A to H) and either tonsil or retropharyngeal lymph node (I to P) (8). Arrows indicate PrP<sup>CWD</sup> staining (red) within brain and lymphoid follicles. Arrow with asterisk indicates lymphoid follicle negative for PrP<sup>CWD</sup>. ^, scale bar = 550 μm; ^^, scale bar = 110 μm.



**Fig. 2.** Immunoblot demonstration of PrP<sup>CWD</sup> in brain (medulla) of white-tailed deer. (A) PrP<sup>CWD</sup> detection in positive and negative control deer (8). Lane 3 demonstrates the expected molecular weight shift upon partial proteinase K (PK) digestion of PrP<sup>CWD</sup> in CWD+ deer, whereas lane 5 shows the complete digestion of PrP<sup>C</sup> in CWD-negative deer. Molecular weight markers are indicated in lane 1. (B) Assay for PrP<sup>CWD</sup> in medulla at obex homogenates for deer inoculated with blood, urine and feces, brain, and saliva, with and without PK digestion (8). Molecular weight markers are indicated in lane 1. Lanes 3, 7, and 9 demonstrate the detection of PrP<sup>CWD</sup>, whereas lane 5 demonstrates the lack of PrP<sup>CWD</sup>.

**References and Notes**

1. E. S. Williams, S. Young, *J. Wildl. Dis.* **16**, 89 (1980).
2. E. S. Williams, S. Young, *J. Wildl. Dis.* **18**, 465 (1982).
3. E. S. Williams, S. Young, *Rev. Sci. Tech.* **11**, 551 (1992).
4. T. R. Spraker *et al.*, *J. Wildl. Dis.* **33**, 1 (1997).
5. R. T. Johnson, *Lancet Neurol.* **4**, 635 (2005).
6. W. J. Hadlow, R. C. Kennedy, R. E. Race, *J. Infect. Dis.* **146**, 657 (1982).
7. K. I. O'Rourke *et al.*, *J. Gen. Virol.* **85**, 1339 (2004).
8. Materials and methods are available as supporting material on Science Online.
9. C. M. Eklund, R. C. Kennedy, W. J. Hadlow, *J. Infect. Dis.* **117**, 15 (1967).
10. M. C. Clarke, D. A. Haig, *Vet. Rec.* **80**, 504 (1967).
11. W. J. Hadlow *et al.*, *J. Infect. Dis.* **129**, 559 (1974).
12. F. Houston, J. D. Foster, A. Chong, N. Hunter, C. J. Bostock, *Lancet* **356**, 999 (2000).
13. N. Hunter *et al.*, *J. Gen. Virol.* **83**, 2897 (2002).
14. L. Cervenakova *et al.*, *Transfusion* **43**, 1687 (2003).
15. C. A. Llewellyn *et al.*, *Lancet* **363**, 417 (2004).

16. A. H. Peden, M. W. Head, D. L. Ritchie, J. E. Bell, J. W. Ironside, *Lancet* **364**, 527 (2004).
17. M. Glatzel, E. Abela, M. Maissen, A. Aguzzi, *N. Engl. J. Med.* **349**, 1812 (2003).
18. M. W. Miller, E. S. Williams, *Curr. Top. Microbiol. Immunol.* **284**, 193 (2004).
19. C. DeJoia, B. Moreaux, K. O'Connell, R. A. Bessen, *J. Virol.* **80**, 4546 (2006).
20. M. P. Perrott, paper presented at the Molecular Mechanisms of Transmissible Spongiform Encephalopathies (Prion Diseases) Keystone Meeting, Snowbird, UT, 11 to 15 January 2005.
21. M. W. Miller, E. S. Williams, N. T. Hobbs, L. L. Wolfe, *Emerg. Infect. Dis.* **10**, 1003 (2004).
22. S. Supattapone *et al.*, *J. Virol.* **75**, 1408 (2001).
23. M. Jeffrey *et al.*, *J. Pathol.* **209**, 4 (2006).
24. C. Scherbel *et al.*, *Vet. Res.* **37**, 695 (2006).
25. S. R. Browning *et al.*, *J. Virol.* **78**, 13345 (2004).
26. E. S. Williams, M. W. Miller, *Rev. Sci. Tech.* **21**, 305 (2002).
27. We thank J. Grassi for his gift of PrP monoclonal antibody; M. Perrott for his technical expertise with the NaPTA methodology; K. O'Rourke and L. Hamburg for performing the PRNP genotype analysis; and C. Tedford for his expertise in deer behavior, facility design, and transport. We thank the office of the CSU Vice President for Research (A. Frank and K. Delehey) for their support in establishing the CWD deer isolation facility. Animals were housed and cared for in accordance to CSU Animal Care and Use Committee regulations. This work was supported by the NIH, National Institute of Allergy and Infectious Diseases, contract N01-AI-25491.

### Supporting Online Material

www.sciencemag.org/cgi/content/full/314/5796/133/DC1  
Material and Methods  
SOM Text  
Tables S1 and S2  
References

18 July 2006; accepted 29 August 2006  
10.1126/science.1132661

# Modulation of Cell Adhesion and Motility in the Immune System by Myo1f

Sangwon V. Kim,<sup>1\*</sup> Wajahat Z. Mehal,<sup>1,3</sup> Xuemei Dong,<sup>6</sup> Volkmar Heinrich,<sup>7†</sup> Marc Pypaert,<sup>4,5</sup> Ira Mellman,<sup>4,5</sup> Micah Dembo,<sup>7</sup> Mark S. Mooseker,<sup>4,8</sup> Dianqing Wu,<sup>6‡</sup> Richard A. Flavell<sup>1,2§</sup>

Although class I myosins are known to play a wide range of roles, the physiological function of long-tailed class I myosins in vertebrates remains elusive. We demonstrated that one of these proteins, Myo1f, is expressed predominantly in the mammalian immune system. Cells from Myo1f-deficient mice exhibited abnormally increased adhesion and reduced motility, resulting from augmented exocytosis of  $\beta 2$  integrin-containing granules. Also, the cortical actin that co-localizes with Myo1f was reduced in Myo1f-deficient cells. In vivo, Myo1f-deficient mice showed increased susceptibility to infection by *Listeria monocytogenes* and an impaired neutrophil response. Thus, Myo1f directs immune cell motility and innate host defense against infection.

In both mouse and human genomes, 16 genes encode conventional class II muscle and non-muscle myosins, with 25 “unconventional” myosin genes encoding 11 other classes (1). Natural mutations of various myosin genes result in an array of genetic disorders, including cardiomyopathies, deafness, blindness, glomerular nephritis, and neuropathies (2, 3). The class I myosins are the largest group of unconventional myosins and are evolutionarily ancient, existing in a wide range of species from yeast to vertebrates (1, 4). Mice and humans have a total of eight class I myosin heavy-chain

genes, six of which encode short-tailed forms (Myo1a, b, c, d, g, and h) and two of which encode long-tailed (amoeboid) forms (Myo1e and f) (1). All class I myosins consist of an N-terminal motor domain, light-chain-binding IQ motifs, and a basic tail homology 1 (TH1) domain thought to affect interactions with membranes (2). The long-tailed class I myosins have an additional proline-rich TH2 domain and a TH3 domain containing a single Src homology 3 (SH3) domain (2).

The class I myosins in *Dictyostelium* and yeast are involved in migration, phagocytosis, endocytosis, and actin remodeling (5, 6). Short-tailed class I myosins in vertebrates are involved in more specialized functions, such as the adaptation of hair cells in the ear (7) and the transport of vesicles and organelles (8, 9), as well as the structural maintenance of the enterocyte microvilli (10). However, the function of long-tailed class I myosins in vertebrates is poorly characterized (11–14).

Myo1f was first identified in our screen for differentially expressed genes in subsets of murine lymphocytes. In contrast to previous data suggesting the widespread expression of Myo1f in tissues (15), our results, which we obtained using specific probes, showed that Myo1f is selectively expressed in the spleen, mesenteric lymph nodes, thymus, and lung (Fig. 1A). By comparison, specific detection of Myo1e showed

a predominant expression pattern in the spleen and mesenteric lymph nodes and moderate expression in the lung, small intestine, and large intestine (Fig. 1B). Within the lymphoid tissues, natural killer (NK) cells, macrophages, and dendritic cells were found to express considerable levels of both Myo1f and Myo1e; neutrophils and B cells showed selective expression of Myo1f and Myo1e, respectively (Fig. 1, C and D).

To determine the function of Myo1f in the vertebrate immune system, we generated Myo1f gene-deficient mice. We focused on neutrophils because Myo1f was detected exclusively in neutrophils (Fig. 1, C and D). Immunoglobulin G (IgG)-mediated phagocytosis was similar between wild-type and knockout (KO) neutrophils (Fig. 1E). To evaluate the degree of pathogen killing that follows phagocytosis, we measured the production of reactive oxygen species. Again, no considerable difference was detected between wild-type and KO neutrophils (Fig. 1F). Thus, Myo1f is dispensable for both the phagocytosis of bacteria and their destruction.

Integrin-mediated adhesion to the vascular endothelium is crucial in the process of neutrophil migration to infected tissue, and the dominant integrins involved in this process belong to the  $\beta 2$  integrin (CD18) family (16). Myo1f-deficient neutrophils exhibited stronger adhesion to integrin ligands, including the intercellular adhesion molecule-1 (ICAM-1) (CD54) and fibronectin (Fig. 2, A and B). Activation of neutrophils by the proinflammatory cytokine tumor necrosis factor- $\alpha$  did not compensate for this difference, suggesting that increased adhesion did not result from changes in the activation status of Myo1f-deficient cells. Experiments with a blocking antibody showed that most of the adhesion was mediated by  $\beta 2$  integrin (Fig. 2, A and B). In addition, Myo1f affected only integrin-mediated adhesion, not integrin-independent adhesion to polylysine-coated substrate (Fig. 2C) (17). Spreading of Myo1f-deficient neutrophils on ICAM-1 was also increased as compared to that of wild-type neutrophils (Fig. 2D). Increased spreading was not due to a loss of cortical tension (fig. S2), which acts to maintain the round shape of the cells (Fig. 2E). In contrast, myosin I double mutants in *Dictyostelium* exhibit abnormalities

<sup>1</sup>Section of Immunobiology, <sup>2</sup>Howard Hughes Medical Institute, <sup>3</sup>Section of Digestive Diseases, <sup>4</sup>Department of Cell Biology, <sup>5</sup>Ludwig Institute for Cancer Research, Yale University School of Medicine, New Haven, CT 06520, USA. <sup>6</sup>Department of Genetics and Developmental Biology, University of Connecticut Health Center, Farmington, CT 06030, USA. <sup>7</sup>Department of Biomedical Engineering, Boston University, Boston, MA 02215, USA. <sup>8</sup>Departments of Molecular, Cellular and Developmental Biology, and Department of Pathology, Yale University, New Haven, CT 06511, USA.

\*Present address: Immunology Program, Memorial Sloan-Kettering Cancer Center, New York, NY 10021, USA.

†Present address: Department of Biomedical Engineering, University of California Davis, Davis, CA 95616, USA.

‡Present address: Vascular Biology and Transplantation Program and Department of Pharmacology, Yale University School of Medicine, New Haven, CT 06520, USA.

§To whom correspondence should be addressed. E-mail: richard.flavell@yale.edu