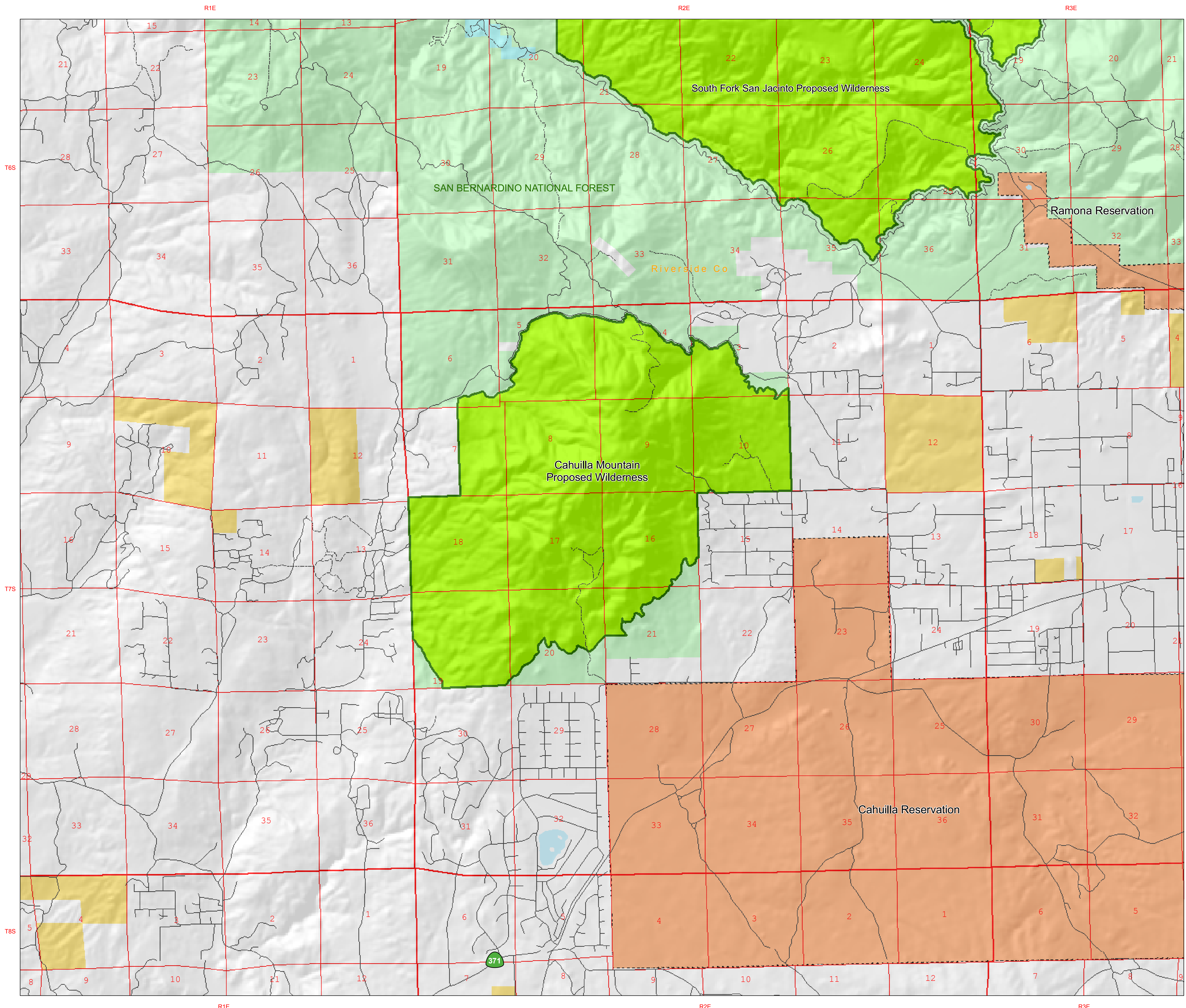


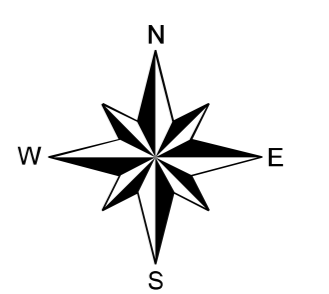
Cahuilla Mountain Proposed Wilderness

February 23, 2007

This Map Prepared at the Request of Representative Mary Bono



- Proposed Wilderness Boundary
- Forest Service Proposed Wilderness
- Private
- Bureau of Land Management
- Forest Service
- State Lands
- Indian Trust Assets
- Highway
- Local Road
- Trail



1:24,000 at 34 inches by 44 inches

Data Source: Bureau of Land Management, California State Office, Sacramento, CA; Natural Resources Division