



U.S. Department
of Homeland Security
**United States
Coast Guard**

**LOCAL NOTICE TO MARINERS
WEEKLY EDITION**

District: 7

Week: 49/06

Issued by:
Commander, Seventh Coast Guard District
909 SE 1st Avenue, Miami, Florida 33131-3050
Telephone (305) 415-6730 or (305) 415-6751
Fax (305) 415-6757
Office hours 7:30 a.m. - 4:00 p.m., M-F

BROADCAST NOTICE TO MARINERS

Navigation information having been of immediate concern to the Mariner, and promulgated by the following broadcasts, has been incorporated in this notice when still effective:

- CCGD7 (D7) BNM 1002-06 to 1012-06
- SECTOR CHARLESTON (CHA) BNM 363-06 to 363-06
- SECTOR JACKSONVILLE (MAY) BNM 394-06 to 404-06
- SECTOR MIAMI (MIA) BNM 576-06 to 627-06
- SECTOR KEY WEST (KEY) BNM 206-06 to 209-06
- SECTOR ST. PETERSBURG (STP) BNM 1466-06 to 1526-06
- SECTOR SAN JUAN (GAN) BNM 281-06 to 302-06

NOTES: (1) Unless otherwise indicated, missing and destroyed structures are presumed to be in the immediate vicinity, mariners should proceed with caution.

(2) The Local Notice to Mariners consists of a Weekly Edition.

(3) Inquiries, Published Articles or Information: (e-mail) Bernard.A.Dukes@uscg.mil

REFERENCES: Light List, Vol. III, Atlantic and Gulf Coasts, 2006 Edition (COMDTPUB P16502.3).
U.S. Coast Pilot 4, Atlantic Coast: Cape Henry to Key West, 2006 (38th Edition).
U.S. Coast Pilot 5, Atlantic Coast: Gulf of Mexico, Puerto Rico and Virgin Islands 2006 (34rd) Edition.

The Local Notice to Mariners is available online at:
<http://www.navcen.uscg.gov/lnm/d7>

The United States Coast Guard Navigation Information Service (NIS)

The United States Coast Guard Navigation Information Service (NIS), operated by the USCG Navigation Center, is staffed 24 hours a day, 7 days a week. The NIS provides information on the current operational status, effective policies, and general information for GPS, DGPS, and LORAN-C. The NIS also disseminates Safety Broadcasts (BNM), Local Notice to Mariners (LNM), and the latest Notice Advisory to Navstar Users (NANU). NANU notices can be obtained via email subscription through the USCG Navigation Center website: <http://www.navcen.uscg.gov/gps/status/default.htm>.

In addition, the NIS investigates all reports of degradation or loss of GPS, DGPS or LORAN service. Mariners are encouraged to report all degradation or loss of radio navigation services to the NIS via any of the following: Phone: (703) 313-5900, Email: webmaster@smtp.navcen.uscg.mil, or on the World Wide Web at: <http://www.navcen.uscg.gov>

REPORT DISCREPANCIES IN AIDS TO NAVIGATION TO THE NEAREST COAST GUARD UNIT

SAFE BOATING AND SEAMANSHIP PROGRAMS: (See Enclosure Section)

ABBREVIATIONS

A through I

ACOE - Army Corps of Engineers
ADRIFT - Buoy Adrift
AICW - Atlantic Intracoastal Waterway
B - Buoy
BKW - Breakwater
B - Refer to Light List
BNM - Broadcast Notice to Mariner
CG - Refer to Light List
CHAN - Channel
CGD - Coast Guard District
CR - Refer to Light List
C/O - Cut Off
CONT - Contour
CONSTR - Construction
CRK - Creek
CONST - Construction
DBN - Daybeacon
DBD/DAYBD - Dayboard
DBN/DEST - Daybeacon Destroyed
DBN IMCH - Daybeacon Improper Characteristic
DISCON - Discontinued
DMGD - Daybeacon Damaged
EST - Established Aid
EVAL - Evaluation
EXT - Extinguished
FL - Flashing
FS - Fog Signal
HAZ - Hazard to Navigation
HBR - Harbor
HOR - Horizontal Clearance
HT - Height
ICW - Intracoastal Waterway
IMCH - Improper Characteristic
INL - Inlet
INOP - Not Operating
ISL - Islet
-

K through M

KBG - Refer to Light List
KBG-I - Refer to Light List
KBR - Refer to Light List
KBR-I - Refer to Light List
KBW - Refer to Light List
KGB - Refer to Light List
KGB-I - Refer to Light List
KGR - Refer to Light List
KGR-I - Refer to Light List
KGW - Refer to Light List
KGW-I - Refer to Light List
KRB - Refer to Light List
KRB-I - Refer to Light List
KRG - Refer to Light List
KRG-I - Refer to Light List
KRW - Refer to Light List
KWB - Refer to Light List
KWB-I - Refer to Light List
KWG - Refer to Light List
KWG-I - Refer to Light List
KWR - Refer to Light List
KWR-I - Refer to Light List
LAT - Latitude
LB - Lighted Buoy
LBB - Lighted Bell Buoy
LHB - Lighted Horn Buoy
LGB - Lighted Gong Buoy
LONG - Longitude
LNM - Local Notice to Mariners
LT - Light
LT CONT - Light Continuous
LWB - Lighted Whistle Buoy
LWP - Left Watching Properly
MISS - Missing
MR - Refer to Light List
MR-I - Refer to Light List

N through Z

NB - Refer to Light List
N/C - Not Charted
ND - Refer to Light List
NG - Refer to Light List
NGA - National Geospatial-Intelligence Agency
NL - Refer to Light List
NO - Number
NOS - National Ocean Service
NR - Refer to Light List
NW - Refer to Light List
NW - Notice Writer
NY - Refer to Light List
OBSCU - Obscured
OBST - Obstruction
OBSTR - Obstruction
PRIV - Private Aid
RBN - Radio Beacon
REBUILT - Aid Rebuilt
RECOVERED - Aid Recovered
RED - Red Buoy
REDINT - Reduced Intensity
RRL - Range Rear Light
RELIGHTED - Aid Relighted
RELOC - Relocated
RESET ON STATION - Aid Reset on Station
RFL - Range Front Light
RIV - River
SEC - Section
SG - Green Square
SG-SY - Green Square with Yellow Square
SHL - Shoaling
SND - Sound
TEMP - Temporary Aid Change
St M - Statute Mile
TR - Red Triangle
TRLB - Temporarily Replaced by Lighted Buoy
TRLT - Temporarily Replaced by Light
TR-TY - Red Triangle with Yellow Triangle
TRUB - Temporarily Replaced by Unlighted Buoy

Additional Abbreviations Specific to this LNM Edition: None

SECTION I - SPECIAL NOTICES

This section contains information of special concern to the Mariner.

NORTH ATLANTIC RIGHT WHALES WARNING:

From December to March the coastal waters between Altamaha Sound, GA, and Sebastian Inlet, FL, are used as calving grounds by the severely endangered North Atlantic Right Whale. This is the world's only known calving ground for this species. Right Whales are the rarest whales in the world and are protected under law from disturbance or injury by the endangered species act of 1973, and the Marine Mammal Protection act of 1972. Right Whales, especially females and their calves, are slow swimmers and frequently lie at the surface. This behavior makes them vulnerable to collisions with ships, which are a significant source of mortality. Vessels operating within 25 miles of shore between 31-27N and 29-50N and within five miles of shore from 29-50N and 28-00N should take precautions to avoid collisions with Right Whales.

For Complete Text of Message See Enclosure (1).

LNM: 44/06

FEDERAL REGISTER: MARCH 8, 2006 (VOLUME 71, NUMBER 45), RULES AND REGULATIONS: REGULATED NAVIGATION AREA; SAN CARLOS BAY, FLORIDA

SUMMARY: The Coast Guard is establishing a temporary regulated navigation area on the waters of San Carlos Bay, Florida. The regulated navigation area is needed to minimize the risk of potential bridge allisions by vessels utilizing the main channel under span -A- (basculer portion) of the Sanibel Island Causeway Bridge and enhance the safety of vessels transiting the area and vehicles crossing over the bridge.

**FEDERAL REGISTER: MARCH 8, 2006 (VOLUME 71, NUMBER 45), RULES AND REGULATIONS:
REGULATED NAVIGATION AREA; SAN CARLOS BAY, FLORIDA**

DATES: This rule is effective from 8:00 a.m. on January 8, 2006 until 8:00 a.m. on January 7, 2007.

FOR FURTHER INFORMATION CONTACT: Lieutenant Junior Grade Jennifer Andrew at Coast Guard Sector St. Petersburg, Prevention Department, (813) 228-2191, Ext. 8203.

For Complete Text See Local Notice to Mariner (LNM 11/06) Dated 14 March 2006

Chart 11427

LNM: 11/06

FLORIDA-INTRACOASTAL WATERWAY-PALM SHORES TO WEST PALM BEACH-WAMS ANNOUNCEMENT

The U.S. Coast Guard is conducting a Waterways Analysis and Management System (WAMS) study of the Intracoastal Waterway (ICW) between mile marker 1006.2 at Jupiter Inlet, Florida. The study focuses on the area's aid to navigation, waterborne commerce, marine casualty information, port, harbor resources, emergency response plans, routine and emergency communication capabilities, and future development projects.

Any company or individual wishing to provide comments or participate in a user survey should contact USCG Sector Miami Waterways Management Division WAMS Officer CWO2 William Weaver by the close of business 15 February 2006.

CWO2 William Weaver can be contacted at Sector Miami, Florida at (305) 535-4311, via e-mail at: William.C.Weaver@uscg.mil or via mail at: Commander (WAMS), USCG Sector Miami, 100 MacArthur Causeway, Miami Beach, Florida 33139, Attn: CWO2 W. Weaver.

Chart 11472

LNM: 44/06

SPECIAL WARNING NUMBER 123, SOMALI.

Due to continuing conditions of armed conflict and lawlessness in Somalia and waters off its coast. Mariners are advised to avoid the Port of Mogadishu and to remain at least 200 nautical miles distant from the Somali Coast.

For Complete Text of Message see Enclosure (2).

LNM: 47/05

OPERATION "ON GUARD"

U. S. Coast Guard Marine Safety Office Miami announces Operation "ON GUARD". This operation is designed to employ Coast Guard - active duty, reserve and auxiliary, Federal Bureau of Investigation, US Customs Service, US Immigration and Naturalization Service and the Florida Department of Law Enforcement personnel in response to suspected terrorist activity at the waterfront facilities of the United States.

For Complete Text of Message See Enclosure (3).

NAVAL PROTECTION ZONES

The U. S. Coast Guard has established protection zones around U. S. Naval vessels within U. S. navigable waters. Naval vessels protection zones are established within 100 yards of any U. S. Naval vessel. This includes any vessel owned, operated, chartered, or leased by the U. S. Navy or under the operational control of the U. S. Navy.

Vessels within 500 yards of a U.S. Naval vessel shall operating at the minimum speed necessary to maintain a safe course and proceed as directed by the official patrol. Mariners may contact the U.S. Coast Guard on VHF Channel 16 regarding this message.

DATES OF LATEST EDITIONS, NAUTICALS CHARTS AND MISCELLANEOUS MAPS

The Dates of Latest Editions, Nautical Charts and Miscellaneous Maps, dated October 1, 2006, published by the National Ocean Service, is available for issue. It may be obtained free by mail from the FAA/National Aeronautical Charting Office, Distribution Division AVN-530, 10201, Good Luck Road, Glenn Dale, MD, 20769-9700, by telephone at 1-800-638-8972 or from your local authorized nautical chart sales agent. This is a quarterly publication listing the most recent editions of nautical charts, miscellaneous maps and publications relating to navigation, weather, etc. with brief descriptions and up-to-date prices for most of the publications listed. Much of this information may also be obtained online at: <http://chartmaker.ncd.noaa.gov/mcd/dole.htm>

LNM: 16/06

INTERNET DELIVERY OF U.S. NOTICE TO MARINERS

The National Geospatial-Intelligence Agency (NGA) has changed the way the U.S. Notice to Mariners are made available to the maritime community. NGA will continue to provide U.S. Notice to Mariners to the public but only in the digital version exclusively via the Internet.

U.S. COAST PILOT 4, ATLANTIC COAST: CAPE HENRY, VA TO KEY WEST, FL

PUBLICATION - National Ocean Service - U.S. Coast Pilot 4, Atlantic Coast: Cape Henry, VA to Key West, FL, 2006, 38th Edition, is ready for issue and may be obtained from:

Federal Aviation Administration
National Aeronautical Charting Office
Distribution Division, AVN - 530
10201 Good Luck Road
Glenn Dale, MD 20769-9700

and authorized agents of the National Ocean Service. Price \$26.00. The 2006 Edition cancels the preceding 2005 Edition. All corrections to the previous edition issued in Notices to Mariners are incorporated in this edition.

Mariners are encouraged to use the convenient -RECORD OF CHANGES- form on Page VI of this book. All Coast Pilot changes published in the U.S. Coast Guard Local Notice to Mariners, National Geospatial-Intelligence Agency Notice to mariners, and on the Internet at: <http://nauticalcharts.noaa.gov/nsd/cpdownload.htm>. are serially numbered (i.e., Changes No. 1, Changes No. 2. etc.) to assist you in tracking the changes.

SECTION II - DISCREPANCIES

This section lists all reported and corrected discrepancies related to Aids to Navigation in this edition. A discrepancy is a change in the status of an aid to navigation that differs from what is published or charted.

DISCREPANCIES (FEDERAL AIDS)

LLNR	Aid Name	Status	Chart No.	BNM Ref.	LNM St	LNM End
135	City of Richmond Wreck Lighted Buoy WR2	Status Unreported	11531	361-06 CHA	48/06	
515	St Simons Lighted Whistle Buoy STS	RAC INOP	11504	337-06 CHA	45/06	
645	Southeast Outer Shoal Lighted Buoy 2	LT EXT	11481	416-06 JAX	49/06	
680	Capron Shoal Buoy 10A	REDUCED INT	11474	607-06 MIA	48/06	
725	Jupiter Inlet Light	LT EXT	11472	617-06 MIA	44/06	
805	Port Everglades Spoil Bank East Daybeacon	TRUB	11470	506-05 MIA	47/05	
810	Port Everglades Spoil West Bank Daybeacon	TRUB	11470	411-05 MIA	32/05	
950	Elbow Reef Light 6	TRLB	11451	301-05 KWT	39/05	
970	Davis Reef Light 14	TRUB	11464	106-06 KWT	39/05	
975	Crocker Reef Buoy 16	TRUB	11464	209-06 KWT	48/06	
1005	Big Pine Shoal Light 22	TRLB	11446	567-05 KWT	40/05	
1010	Looe Key Light 24	TRLB	11442	187-06 KWT	39/05	
1080	Twenty-Eight Foot Shoal Light	TRLB/RAC INOP	11439	174-06 KWT	40/05	
1085	Halfmoon Shoal Light WR2	TRLB	11439	112-06 KWT	30/05	
1090	Rebecca Shoal Light	TRLT/DBN DMGD/DBD DEST	11439	113-06 KWT	42/05	
1190	New Ground Rocks Light	DBD DEST	11439	373-05 KWT	42/05	
1230	Cape Romano Shoals Light	TRLB	11430	058-06 STP	47/05	
1390	Tampa Bay Lighted Buoy T	RAC INOP	11415	1429-06 STP	45/06	
1620	Cedar Keys Main Channel Light 1	TRLB	11408	0337-06 STP	12/05	
1625	Cedar Keys Northwest Channel Approach Light 2	TRLB	11408	0673-06 STP	19/06	

1645	Horseshoe Beach Approach Light 2	TRLB/LT EXT/DBN DEST	11407	0859-06 STP	25/06
1750	Little River Inlet Daybeacon 18	TRUB	11534	NA	47/06
1750.5	Little River Inlet Daybeacon 19	TRUB	11534	357-06 CHA	48/06
2370.6	Charleston Harbor Channel Lighted Buoy 6	LT EXT	11523	363-06 CHA	48/06
3470	Wando River Range E Rear Daybeacon	DBN DMGD	11524	167-06 CHA	22/06
4615	Bloody Point Range Lighted Buoy 13	OFF STA	11505	373-06 CHA	49/06
4775	New Channel Range Rear Light	DBD DMGD	11507	043-06 CHA	07/06
5090	Port Wentworth Channel Light 22	LT EXT/DBN DEST	11514	367-06 CHA	49/06
5095	Port Wentworth Channel Range B Front Light	DBN DMGD	11514	344-06 CHA	46/06
5740	Ossabaw Sound Preferred Channel Buoy N	TRUB	11511	332-06 CHA	42/06
5835	Sapelo Sound Buoy S	TMK MISSING	11510	162-06 CHA	20/06
6030	St Simons Lighted Whistle Buoy STS	RAC INOP	11504	337-06 CHA	45/06
6110	St Simons Sound Entrance Lighted Buoy 16	LT EXT	11489	NA	48/06
6145	St Simons Sound Lighted Buoy 20	LT EXT	11489	372-06 CHA	49/06
6195	Cedar Hammock Range Front Light	REDUCED INT	11489	338-06 CHA	43/06
7045	Amelia River Lighted Buoy 2	LT EXT	11503	339-06 JAX	40/06
7120	St Johns Bar Cut Range Rear Light	LT EXT	11491	356-06 JAX	25/06
7360	Fulton Cutoff Light 36	TRLB	11491	275-06 JAX	24/06
7575	Long Branch Lighted Buoy 69	REDUCED INT	11491	417-06 JAX	49/06
7675	Winter Point Light 1	LT EXT	11491	418-06 JAX	49/06
7845	Ragged Point Light 12	TRUB	11492	910-06 JAX	40/06
9210	Butchers Bend Cutoff Daybeacon 111	TRUB	11498	293-06 JAX	35/06
9815.1	Fort Pierce Inlet Lighted Buoy 3	LT EXT	11475	608-06 MIA	45/06
9830	Fort Pierce Inlet Inner Harbor Lighted Buoy 7	LT EXT	11475	575-06 MIA	45/06
9845	Fort Pierce Inlet Inner Harbor Lighted Buoy 10	LT EXT	11475	632-06 MIA	49/06
10303	Hillsboro Inlet Entrance Daybeacon 5	TRLB/DBN DEST	11467	571-06 MIA	45/06
10310	Port Everglades Lighted Buoy 2	OFF STA	11470	630-06 MIA	49/06
11200	Angelfish Creek Daybeacon 3A	TRLB	11463	211-06 KWT	48/06
12655	Big Spanish Channel Daybeacon 52	TRLB	11448	150-06 KWT	32/06
13610	East Turtle Shoal Light 45	TRUB	11449	566-05 KWT	41/05
13815	Boot Key Harbor Daybeacon 21	TRUB/DBN DEST	11449	207-06 KWT	46/06
15220	Key West Northwest Channel Light 12	TRLB	11441	202-06 KWT	46/06
15365	Calda Channel Daybeacon 11	TRUB	11441	403-05 KWT	45/05
15440	Dry Tortugas Southeast Channel Light 1	LT EXT/DBN DEST	11438	166-04 KWT	34/04
15450	Dry Tortugas Southeast Channel Light 3	TRLB	11438	285-05 KWT	41/05
15455	Dry Tortugas Southeast Channel Daybeacon 4	TRUB	11438	107-06 KWT	37/05
15505	Dry Tortugas Southwest Channel Daybeacon 3	TRLB	11438	517-05 KWT	45/05
15635	Sandy Key Channel Daybeacon 10X	TRUB	11451	571-05 KWT	45/05
15705	Flamingo Channel Daybeacon 14	TRUB	11433	267-04 MIA	24/04
15835	Whitewater Bay Daybeacon 36	DBD DMGD	11433	206-06 MIA	16/06
15980	Indian Key Pass Light 4	LT EXT	11430	1430-06 STP	45/06
17415	Big Marco Pass-Gordon Pass Daybeacon 65	TRUB	11430	NA	42/06
17600	Naples Bay Channel Daybeacon 26	TRLB	11430	1322-06 STP	42/06
18090	Matanzas Pass Channel Daybeacon 3	TRLB	11427	1416-06 STP	45/06
21605	New Pass Channel Buoy 5	MISSING/TRUB	11425	1453-06 STP	47/06
21705	New Pass Channel Light 13	LT EXT	11425	1521-06 STP	49/06
21725	New Pass Channel Daybeacon 17	TRUB	11425	1211-06 STP	39/06
21730	Siesta Key-Tampa Bay Junction Daybeacon NP	TRUB	11425	1229-06 STP	39/06
22070	Manatee River Daybeacon 24	DBD DMGD	11416	1492-06 STP	47/06

22225	Tampa Bay Lighted Buoy T	RAC INOP	11415	1429-06 STP	45/06
22355	Mullet Key Channel Range Front Light	DBD DMGD	11415	0899-06 STP	27/06
22805	Tampa Bay Cut F Channel Lighted Buoy 1F	LT EXT	11416	1529-06 STP	49/06
23190	Hillsborough Cut C Channel Outbound Range Rear Light	LT EXT	11416	1528-06 STP	49/06
23785	Tampa Bay Cut K Channel Upper Range Rear Light	LT EXT	11416	1526-06 STP	49/06
25580	Johns Pass Channel Daybeacon 1	TRUB	11411	1006-06 STP	28/06
26165	Anclote River Entrance Daybeacon 6	TRUB	11411	1405-06 STP	44/06
28635	Homosassa River Daybeacon 69A	TRUB	11409	0331-06 STP	10/06
29240	Cross Florida Greenway Light 22	TRUB	11408	1072-06 STP	32/06
29455	Withlacoochee River Entrance Daybeacon 16	TRUB	11408	1478-06 STP	47/06
29755	Cedar Keys Main Channel Light 1	TRLB	11408	0337-06 STP	12/05
29920	Cedar Keys Northwest Channel Approach Light 2	TRLB	11408	0673-06 STP	19/06
30360	Horseshoe Beach Approach Light 2	TRLB/LT EXT/DBN DEST	11407	0859-06 STP	25/06
30370	Horseshoe Beach Approach Daybeacon 5	TRLB	11407	0857-06 STP	25/06
30740	Cabras Light	LT EXT/DBN DEST	25670	229-06 SJN	37/06
30770	Bahia de San Juan Lighted Buoy 4	OFF STA	25670	296-06 SJN	47/06
31065	Graving Dock Channel Range Rear Light	LT EXT	25670	320-06 SJN	49/06
31130	Boca de Cangrejos Lighted Buoy BC	TRLB/BUOY DMGD/REDUCED INT	25668	095-06 SJN	12/06
31155	Cabo San Juan Light	LT IMCH	25667	261-06 SJN	37/06
31160	Las Cucarachas Light	LT EXT	25667	319-06 SJN	49/06
32880	Christiansted Harbor Channel Lighted Buoy 3	SINKING	25645	269-06 SJN	43/06
33345	Southwest Cape Shoal Buoy 2	TRUB	25644	073-06 SJN	13/06
33410	St Nicolas Point Channel Light 6	TRUB	26230	067-05 GAN	11/05
33535	Mud Island Light 1	TRUB	26230	068-05 GAN	11/05
33610	Little River-Winyah Bay Light 4	TRLB	11534	NA	42/06
33845	Little River-Winyah Bay Light 38	TRLB	11534	NA	42/06
34220	Winyah Bay-Charleston Harbor Light 31	TRLB/DBN DEST	11518	347-06	46/06
35070	South Edisto River Range A Front Light	REDUCED INT	11517	415-05 CHA	50/05
35855	Walls Cut Daybeacon 46	DBN DEST	11507	173-05 CHA	24/06
36380	Florida Passage Range Rear Daybeacon	DBN DEST	11507	177-06 CHA	25/06
36555	Johnson Creek Daybeacon 131	TRUB	11507	330-06 CHA	44/06
36620	South Newport River Light 135	TRLB	11507	364-06 CHA	38/06
36785	Old Teakettle Creek Light 173	DBN DMGD	11507	364-06 CHA	48/06
37010	South Altamaha River Daybeacon 8	TRUB	11508	N/A	41/05
37255	St Simons Sound Lighted Buoy 20	LT EXT	11489	372-06 CHA	49/06
37320	Jekyll Creek Daybeacon 16	TRUB	11506	214-06 CHA	28/06
37340	Jekyll Creek Light 19	TRUB	11489	297-06 CHA	37/06
37355	Jekyll Creek Daybeacon 24	TRUB	11489	271-06 CHA	36/06
37585	Cumberland River Light 55	DBD DEST	11489	NA	49/06
37590	Cumberland River Daybeacon 57	TRLB	11489	369-06 JAX	44/06
37660	Cumberland Sound Daybeacon 70	TRUB	11489	362-06 JAX	43/06
37925	Amelia River Lighted Buoy 2	LT EXT	11503	339-06 JAX	40/06
38190	Sawpit Creek Light 49	TRLB	11489	326-06 JAX	32/06
38195	Sawpit Creek Daybeacon 50	TRUB	11489	368-06 JAX	44/06
38215	Gunnison Cut Light 57	TRLB	11489	390-06 JAX	46/06
38425	Pablo Creek Daybeacon 13	TRUB	11489	342-06 JAX	39/06
38485	Pablo Creek Daybeacon 29	TRUB	11489	327-06 JAX	39/06
38570	Pablo Creek Daybeacon 36	TRUB	11489	348-06 JAX	41/06
38595	Pablo Creek Daybeacon 41	TRUB	11489	330-06 JAX	39/06
39061	Mantanzas River Daybeacon 7	TRUB	11485	399-06 JAX	47/06
39065	Matanzas River Daybeacon 10A	TRUB	11485	367-06 JAX	44/06

39450	Matanzas River Daybeacon 58	TRUB	11485	296-06 JAX	35/06
39470	Matanzas River Daybeacon 66	TRUB	11485	231-06 JAX	26/06
39475	Matanzas River Light 67	TRLB	11485	233-06 JAX	26/06
39480	Matanzas River Daybeacon 68	TRUB	11485	232-06 JAX	26/06
39790	Smith Creek Daybeacon 22	TRUB	11485	357-06 JAX	43/06
39950	Halifax River Daybeacon 19	TRLB/DBN DMGD	11485	391-06 JAX	46/06
40195	Halifax River Daybeacon 44	TRUB	11485	174-06 JAX	20/06
40240	Halifax River Daybeacon 55	TRUB	11485	247-06 JAX	27/06
40473	Halifax River Daybeacon 68A	TRUB	11485	205/217-06 JAX	24/06
40490	Halifax River Daybeacon 72	TRUB	11485	200-06 Jax	23/06
40615	Ponce de Leon Cut Junction Daybeacon	TRUB	11485	493-05 JAX	51/05
40625	New Smyrna Beach Light 21	TRLB	11485	406-06 JAX	49/06
40960	Mosquito Lagoon Daybeacon 14	TRUB	11485	348-06 JAX	41/06
41190	Indian River (North Section) Daybeacon 23	TRUB	11485	255-06 JAX	29/06
41725	Banana River North Daybeacon 13A	TRLB	11478	309-06 JAX	37/06
42335	Indian River (North Section) Daybeacon 99	TRUB	11472	400-06 JAX	47/06
43545	Indian River (South Section) Daybeacon 58	TRUB	11472	621-06 MIA	48/06
44195	Vero Beach Channel Daybeacon 4	TRUB	11472	449-06 MIA	39/06
45110	Indian River (South Section) Daybeacon 186	TRUB/DBN DEST	11475	585-06 MIA	46/06
45255	Indian River (South Section) Daybeacon 189	TRUB/DBN DEST	11472	589-06 MIA	47/06
45785	Indian River (South Section) Daybeacon 225	TRUB	11472	529-06 MIA	42/06
46880	Lake Worth South Daybeacon 14	TRUB	11472	631-06 MIA	49/06
50710	St Lucie River Daybeacon 8	TRUB	11472	270-06 MIA	21/06
50720	St Lucie River Light 11	TRLB/DBN DMGD	11472	563-06 MIA	45/06
51120	St Lucie Canal Daybeacon 38	TRUB	11428	109-06 MIA	09/06
51125	St Lucie Canal Daybeacon 39	TRUB	11428	566-06 MIA	45/06
51225	Rocky Reef North Light 7	DBN DEST	11428	565-06 MIA	45/06
51270	Clewiston Channel (Rt 1B) Daybeacon 4	TRUB	11428	547-06 MIA	44/06
51285	Clewiston Channel (Rt 1B) Daybeacon 7	TRUB	11428	548-06 MIA	43/06
51445	Lake Okeechobee (Rt 2) Daybeacon 13	TRUB	11428	001-06 MIA	45/05
51465	Lake Okeechobee (Rt 2) Daybeacon 19	TRUB	11428	N/A	45/05
51475	Lake Okeechobee (Rt 2) Daybeacon 21	DBD DEST	11428	673-05 MIA	45/05
51500	Lake Okeechobee (Rt 2) Daybeacon 26	TRUB	11428	002-06 MIA	45/05
51510	Lake Okeechobee (Rt 2) Daybeacon 28	TRUB	11428	N/A	45/05
51535	Lake Okeechobee (Rt 2) Daybeacon 34	TRUB	11428	003-06 MIA	45/05
51565	Lake Okeechobee (Rt 2) Daybeacon 41	TRUB	11428	004-06 MIA	45/05
51600	Lake Okeechobee (Rt 2) Daybeacon 53	TRUB	11428	N/A	45/05
51605	Lake Okeechobee (Rt 2) Daybeacon 54	TRUB	11428	N/A	45/05
51730	Bacom Point Channel Daybeacon 2	TRUB	11428	N/A	45/05
51750	Bacom Point Channel Daybeacon 6	TRUB	11428	006-06 MIA	02/06
51770	Lake Okeechobee (Rt 2) Daybeacon 80	TRUB	11428	N/A	45/05
51780	Lake Okeechobee (Rt 2) Daybeacon 84	TRLB	11428	N/A	45/05
51785	Lake Okeechobee (Rt 2) Daybeacon 86	TRUB	11428	005-06 MIA	45/05
51795	Lake Okeechobee (Rt 2) Daybeacon 89	TRUB	11428	546-06 MIA	45/05
51800	Lake Okeechobee (Rt 2) Daybeacon 91	TRUB	11428	N/A	45/05
51830	Lake Okeechobee (Rt 2) Daybeacon 98	TRUB	11428	545-06 MIA	45/05
54055	Caloosahatchee River Range Front Light E/F	LT EXT	11427	0513-06 STP	17/06
54760	Caloosahatchee River Daybeacon 94	TRLB/DBN DEST	11427	1448-06 STP	46/06
54775	Caloosahatchee River Range Rear Light H/I	DBD DEST	11427	0480-06 STP	16/06
56105	Pine Island Sound Light 63	TRLB/DBD DEST	11427	1232-06 STP	39/06

56125	Pine Island Sound Light 69	TRLB	11427	NA	44/06
57550	Lemon Bay Channel Daybeacon 33	TRUB	11425	1501-06 STP	48/06
58440	Venice Inlet-Siesta Key Light 82	TRLB	11425	1215-06 STP	39/06
58565	Siesta Key-Tampa Bay Junction Daybeacon NP	TRUB	11425	1229-06 STP	39/06
60750	Cats Point Channel Light 16	LT EXT	11411	1527-06 STP	49/06
	AUTEC Site 4 Light 2	LT EXT	26312	387-04 D7	09/04
	Cap Haitien Daybeacon 13	DBD DEST	26147	NA	07/06
	Cap Haitien Daybeacon 13	DBN DMGD	26147	NA	07/06

DISCREPANCIES (FEDERAL AIDS) CORRECTED

LLNR	Aid Name	Status	Chart No.	BNM Ref.	LNM St	LNM End
2375	Charleston Harbor Channel Lighted Buoy 8	WATCHING PROPERLY	11523	NA	49/06	49/06
2470	Charleston Harbor Channel Lighted Buoy 24	WATCHING PROPERLY	11523	NA	49/06	49/06
2595	Charleston Harbor North Channel Lighted Buoy 37	WATCHING PROPERLY	11524	NA	49/06	49/06
4580.1	Bloody Point Range Lighted Buoy 8A	WATCHING PROPERLY	11505	NA	48/06	49/06
4590	Bloody Point Range Rear Light	WATCHING PROPERLY	11505	NA	49/06	49/06
4835	Lower Flats Range Rear Light	WATCHING PROPERLY	11507	NA	49/06	49/06
6605	St Marys Entrance Lighted Buoy 17	WATCHING PROPERLY	11503	NA	49/06	49/06
6610	St Marys North Jetty Lighted Buoy 2NJ	WATCHING PROPERLY	11503	NA	49/06	49/06
6690	Cumberland Sound Upper Range A Front Light	WATCHING PROPERLY	11503	NA	49/06	49/06
6695	Cumberland Sound Upper Range A Rear Light	WATCHING PROPERLY	11503	NA	49/06	49/06
6880	Cumberland Sound Lower Range C Range Front Light	WATCHING PROPERLY	11503	NA	49/06	49/06
6945	Kings Bay Upper Range E Front Light	WATCHING PROPERLY	11503	NA	49/06	49/06
7145	St Johns River Lighted Buoy 7	WATCHING PROPERLY	11489	NA	49/06	49/06
9510	St Augustine Inlet Buoy 10	WATCHING PROPERLY	11485	NA	45/06	49/06
9625	Canaveral Harbor Entrance Channel Lighted Buoy 10	WATCHING PROPERLY	11478	NA	49/06	49/06
9625	Canaveral Harbor Entrance Channel Lighted Buoy 10	WATCHING PROPERLY	11478	NA	49/06	49/06
10300	Hillsboro Inlet Daybeacon 3	WATCHING PROPERLY	11467	NA	45/06	49/06
10330	Port Everglades Light 4	WATCHING PROPERLY	11470	NA	05/06	49/06
10485	Miami Main Channel Lighted Buoy 4	WATCHING PROPERLY	11468	NA	47/06	49/06
10750	Miami T/B Art Light A	WATCHING PROPERLY	11468	NA	49/06	49/06
10755	Miami T/B Art Light B	WATCHING PROPERLY	11468	NA	49/06	49/06
15700	Flamingo Channel Daybeacon 13	WATCHING PROPERLY	11433	NA	49/05	49/06
18120	Matanzas Pass Channel Light 7	WATCHING PROPERLY	11427	NA	48/06	49/06
18230.01	Matanzas Pass Channel Light 12	WATCHING PROPERLY	11427	NA	48/06	49/06
22300	Egmont Channel Lighted Buoy 12	WATCHING PROPERLY	11415	NA	49/06	49/06
22785	Tampa Bay Cut E Channel Lighted Buoy 5E	WATCHING PROPERLY	11416	NA	49/06	49/06
22800	Tampa Bay Cut F Channel South Range Rear Light	WATCHING PROPERLY	11416	NA	49/06	49/06
23595	Port Sutton Channel Light 3	WATCHING PROPERLY	11415	NA	34/06	49/06
23970	South Gandy Channel Daybeacon 3	WATCHING PROPERLY	11415	NA	16/06	49/06
24985	St Petersburg Channel Light 8	WATCHING PROPERLY	11415	NA	49/06	49/06
25460	Pass-A-Grille Channel Daybeacon 1	WATCHING PROPERLY	11411	NA	28/06	49/06
25685	Clearwater Pass Channel Daybeacon 3	WATCHING PROPERLY	11411	NA	35/06	49/06
26100	Anclote Anchorage South Entrance Light 7	WATCHING PROPERLY	11411	NA	49/06	49/06
26115	Anclote Anchorage North Entrance Light 4	WATCHING PROPERLY	11411	NA	42/06	49/06
26250	Anclote River Daybeacon 25	WATCHING PROPERLY	11411	NA	49/06	49/06
26505	Pithlachascotee River Light 1	WATCHING PROPERLY	11411	NA	38/06	49/06

26510	Pithlachascotee River Daybeacon 2	WATCHING PROPERLY	11411	NA	47/06	49/06
26560.5	Pithachascotee River Daybeacon 10A	WATCHING PROPERLY	11411	NA	18/06	49/06
30805	Bahia de San Juan Lighted Buoy 11	WATCHING PROPERLY	25670	NA	47/06	49/06
31060	Graving Dock Channel Range Front Light	WATCHING PROPERLY	25670	NA	49/06	49/06
34550	Winyah Bay-Charleston Harbor Light 127	WATCHING PROPERLY	11523	NA	48/06	49/06
37700	Kings Bay Upper Range E Front Light	WATCHING PROPERLY	11503	NA	49/06	49/06
37785	Cumberland Sound Lower Range C Range Front Light	WATCHING PROPERLY	11503	NA	49/06	49/06
37870	Cumberland Sound Upper Range A Front Light	WATCHING PROPERLY	11503	NA	49/06	49/06
37875	Cumberland Sound Upper Range A Rear Light	WATCHING PROPERLY	11503	NA	49/06	49/06
38225	Gunnison Cut Light 61	WATCHING PROPERLY	11489	NA	49/06	49/06
38305	Sisters Creek Light 75	WATCHING PROPERLY	11489	NA	49/06	49/06
38325	Sisters Creek Light 82	WATCHING PROPERLY	11489	NA	49/06	49/06
38352	Pablo Creek Buoy 2	WATCHING PROPERLY	11491	NA	42/06	49/06
38365	Pablo Creek Light 6	WATCHING PROPERLY	11489	NA	48/06	49/06
38470	Pablo Creek Daybeacon 25	WATCHING PROPERLY	11489	NA	48/06	49/06
47365	Stranahan River Light 18	WATCHING PROPERLY	11470	NA	45/06	49/06
47823	Biscayne Bay Buoy 6B	WATCHING PROPERLY	11467	NA	49/06	49/06
47825	Biscayne Bay Shoal Daybeacon	WATCHING PROPERLY	11467	NA	49/06	49/06
48340	Biscayne Bay Daybeacon 35	WATCHING PROPERLY	11467	NA	49/06	49/06
48485	Biscayne Bay Light 55	WATCHING PROPERLY	11468	NA	49/06	49/06
48960	Dinner Key Channel Light 11	WATCHING PROPERLY	11465	NA	49/06	49/06
60420	Sunshine Skyway Channel Daybeacon 23	WATCHING PROPERLY	11411	NA	49/06	49/06
61655	The Narrows Daybeacon 37	WATCHING PROPERLY	11411	NA	48/06	49/06

DISCREPANCIES (PRIVATE AIDS)

LLNR	Aid Name	Status	Chart No.	BNM Ref.	LNM St	LNM End
655	Sebastian Inlet North Jetty Light	LT IMCH	11476	N/A	33/04	
774	Boca Raton Inlet South Jetty Light 1	LT EXT	11472	337-04 MIA	01/04	
840	NOAA DATA Lighted Buoy 41009	OFF STA	11480	560-04 MAY	37/04	
855	NOAA DATA Lighted Buoy 42036	ADRIFT	11400	1044-05 MIA	29/05	
965.3	NOAA Life Support Lighted Buoy (AQUARIUS)	OFF STA	11463	019-04 KWT	05/04	
1430	Redington Shores Fishing Pier North Light	LT EXT	11412	0927-05 STP	28/05	
1435	Indian Shores Fish Haven South B	MISSING	11412	0912-06 STP	27/06	
1440	Indian Shores Fish Haven Center B	BUOY DMGD	11412	0913-06 STP	27/06	
1445	Indian Shores Fish Haven North B	BUOY DMGD	11412	0911-06 STP	27/06	
1450	Indian Shores Artificial Reef Obstruction B	MISSING	11412	NA	19/06	
2665	Cooper River Degaussing Range E PI Light	LT EXT	11524	747-00 GD7	33/00	
2670	Cooper River Degaussing Range West PI Light	LT EXT	11524	015-00 CHA	02/00	
2815	U South Navy Pier P Light (1)	LT EXT	11524	N/A	28/05	
2865	U.S. Navy Pier B Light	LT EXT	11524	N/A	28/05	
3015	Cooper River Ammunition Pier Light	LT EXT	11527	N/A	28/05	
3245	Cooper River Mon Sta Obstruction Light E	LT IMCH	11527	N/A	28/05	
3260	South Carolina Gas & Elec North Pier Light	LT EXT	11527	NA	38/06	
3265	South Carolina Gas & Elec South Pier Light	LT EXT	11527	NA	38/06	
3270	Cooper River Mon Sta Light C	LT EXT	11527	N/A	28/05	
4355	Baynard Cove Creek Daybeacon 4	DBN DEST	11516	N/A	05/05	
4360	Baynard Cove Creek Daybeacon 6	DBN IMCH	11516	N/A	05/05	

6027	Cloister Hotel North Obstruction Light	LT EXT	11508	N/A	17/05
7210	Navy Fuel Pier Light (Mayport)	LT EXT	11491	254-06 JAX	43/03
7425	Blount Island Wharf Southwest Light	LT IMCH	11491	112-06 JAX	13/06
7430	Blount Island Wharf Northwest Light	LT IMCH	11491	111-06 JAX	13/06
9765	Sebastian Inlet Channel Daybeacon 8	DBN IMCH	11472	N/A	05/05
9770	Sebastian Inlet Channel Daybeacon 9	DBN DEST	11472	NA	09/06
9775	Sebastian Inlet Channel Daybeacon 10	DBN IMCH	11472	N/A	05/05
9795	Sebastian Inlet Channel Daybeacon 14	DBN DEST	11472	507-06 MIA	40/06
9880	Banty Saunders Rec Area Daybeacon 8	DBN IMCH	11475	N/A	13/05
10055	Sailfish Point Marina Channel Daybeacon 11	MISSING	11472	402-06 MIA	34/06
10720	MSRC Boundary Daybeacon A	DBN DEST	11468	669-05 MIA	45/05
10725	MSRC Boundary Daybeacon B	DBN DEST	11468	670-05 MIA	45/05
11030	Caesar Creek Daybeacon 10	TRUB	11463	534-06 MIA	43/06
11045	Caesar Creek Daybeacon 13	TRUB	11464	536-06 MIA	43/06
11550	Garden Cove Daybeacon 3	DBD DEST	11463	423-05 KWT	44/05
11560	Garden Cove Daybeacon 5	DBN DEST	11463	161-05 KWT	29/05
11565	Garden Cove Daybeacon 6	DBD DEST	11463	NA	44/05
11570	Garden Cove Daybeacon 7	DBD DEST	11463	NA	44/05
11575	Garden Cove Daybeacon 8	DBD DMGD	11463	NA	19/06
11580	Garden Cove Daybeacon 9	DBD DEST	11463	NA	44/05
11585	Garden Cove Daybeacon 10	DBD DEST	11464	428-05 KWT	38/05
11590	Garden Cove Daybeacon 11	DBD DMGD	11463	429-05 KWT	39/05
11605	Garden Cove Daybeacon 13	DBD DMGD	11464	327-05 KWT	39/05
11615	Garden Cove Daybeacon 15	DBD DMGD	11463	NA	19/06
11695	John Pennekamp Coral Reef Park Buoy F	MISSING	11451	NA	13/06
11730	Grecian Rocks Obstruction Daybeacon	DBN DEST	11451	333 / 553 KWT	39/05
11740	Mosquito Bank Obstruction Daybeacon	DBN DEST	11451	554-05 KWT	47/05
11745	White Bank Obstruction Daybeacon	DBN DEST	11451	332-05 KWT	39/05
11750	French Reef Obstruction Daybeacon	DBN DEST	11451	NA	15/06
11760	Molasses Reef North Obstruction Daybeacon	DBN DEST	11451	N/A	09/06
11765.1	Port Largo Channel Daybeacon 4	DBN DEST	11463	012/329/489 KE	02/05
11765.2	Port Largo Channel Daybeacon 6	DBN DEST	11464	578-05 KWT	52/05
11851	Newport Bay Daybeacon 1	DBN DMGD	11464	488-05 KWT	44/05
11851.4	Newport Bay Daybeacon 5	DBD DEST	11464	484-05 KWT	44/05
11851.5	Newport Bay Daybeacon 6	DBN DEST	11464	485-05 KWT	24/04
11851.6	Newport Bay Daybeacon 7	DBN DMGD	11464	486-05	44/05
11851.8	Newport Bay Daybeacon 9	DBN DEST	11464	487-05 KWT	24/04
11851.9	Newport Bay Daybeacon 10	DBN DEST	11464	N/A	24/04
11852.2	Newport Bay Daybeacon 15	DBN DEST	11464	N/A	24/04
11853.3	Newport Bay Auxiliary Channel Daybeacon 4	MISSING	11464	N/A	09/06
11915	Harborage Yacht Club Entrance Light 2	DBN IMCH/FADED	11451	NA	15/06
11917.5	Mariners Club Marina Daybeacon 8	DBD DEST	11463	328-05 KWT	39/05
11945	Key Largo Ocean Resort Light 2	LT EXT	11451	005-06 KWT	03/06
12501.4	Vaca Cut Daybeacon 8	DBN DEST	11453	140-06 KWT	30/06
12865	Yellow Shark Channel Buoy 17	DBN DEST	11449	NA	40/06
13060	Shell Key Channel Daybeacon 18	DBD DEST	11449	315-05 KEY	39/05
13195	Indian Key Channel Daybeacon 12	DBD DEST	11449	NA	40/06
13345	Lignumvitae Channel Daybeacon 15	DBD DMGD	11449	NA	31/06
13355	Caloosa Cove Channel Light 2	LT EXT/DBN DEST	11442	050-06 KWT	11/06
13365	Caloosa Cove Channel Daybeacon 6	DBD DEST	11442	496-05 KWT	44/05
13920	Ramrod Key Channel Daybeacon 1	MISSING	11446	NA	03/06
14067	Summerland Key Daybeacon 6	DBN IMCH	11445	N/A	28/05
14230	Upper Sugarloaf Sound Daybeacon 11	MISSING	11446	148-06 KWT	32/06
14310	Cudjoe Key Daybeacon 11	DBD DEST	11446	161-06 KWT	34/06

14665	Key West Oceanside Marina Daybeacon 1	DBN IMCH	11446	N/A	09/05
14705	Key West Oceanside Marina Daybeacon 9	DBN IMCH	11445	N/A	12/03
14980.2	Key West Mooring Field Light B	LT IMCH	11447	N/A	39/04
15320	Lake Passage Channel Daybeacon 17	DBD DEST	11441	N/A	40/05
16110	NPS Boat Basin South Channel Daybeacon 2	DBN IMCH	11429	1303-04 STP	35/04
16120	NPS Boat Basin South Channel Daybeacon 4	DBN IMCH	11429	1304-04 STP	48/03
16135	NPS Boat Basin West Channel Daybeacon 1	DBN IMCH	11430	1302-04 STP	35/04
16145	NPS Boat Basin West Channel Daybeacon 4	DBN IMCH	11429	1301-04 STP	35/04
16150	NPS Boat Basin West Channel Daybeacon 5	DBN IMCH	11429	1300-04 STP	48/03
16160	NPS Boat Basin West Channel Daybeacon 7	DBN DEST	11429	1299-04 STP	48/03
16665	Blackwater River Daybeacon 56	DBN DEST	11430	NA	13/06
16905	Caxambas Pass Entrance Light C	DBN DEST	11430	NA	44/05
17105	Isles of Capri Daybeacon 2	DBN IMCH	11430	N/A	48/03
17120	Isles of Capri Daybeacon 5	DBN DEST	11430	NA	13/06
17140	Isles of Capri Daybeacon 9	DBN IMCH	11430	0934-05 STP	13/05
17710	Doctors Pass Daybeacon 1A	MISSING	11430	1160-06 STP	36/06
17760	Doctors Pass Daybeacon 12	MISSING	11430	1161-06 STP	36/06
18875	Mullock Creek Daybeacon 28	MISSING	11427	1505-06 STP	48/06
18995	Alternate Route Channel Daybeacon 3	DBN DEST	11427	N/A	18/03
18995.06	Estero Pointe Channel Daybeacon 12	DBN IMCH	11427	1316-04 STP	35/04
19000	Alternate Route Channel Daybeacon 4	DBN DMGD	11427	NA	13/06
19005	Alternate Route Channel Daybeacon 5	DBN DMGD	11427	NA	13/06
19015	Alternate Route Channel Daybeacon 7	DBN DEST	11427	1319-04 STP	15/04
19025	Alternate Route Channel Daybeacon 9	DBN DEST	11427	N/A	15/04
19030	Alternate Route Channel Daybeacon 10	DBN IMCH	11427	N/A	18/03
19065	Coconut Channel Daybeacon 7	DBN IMCH	11427	N/A	17/04
19080	Coconut Channel Daybeacon 10	DBN DEST	11427	596-04 STP	18/04
19250	Southern Passage Daybeacon 5	DBD DEST	11427	NA	13/06
19270	Southern Passage Daybeacon 9	DBD DEST	11427	NA	13/06
19275	Southern Passage Daybeacon 10	DBN IMCH	11427	N/A	17/04
19280	Southern Passage Daybeacon 11	DBN IMCH	11427	NA	13/06
19300	Southern Passage Daybeacon 15	DBD DEST	11427	NA	51/05
19305	Southern Passage Daybeacon 16	DBN IMCH	11427	1325-04 STP	35/04
19320	Southern Passage Daybeacon 19	DBN IMCH	11427	N/A	35/04
19335	Spring Creek Daybeacon 2	DBD DMGD	11427	NA	13/06
19340	Spring Creek Daybeacon 4	DBN DEST	11427	N/A	28/05
19350	Spring Creek Daybeacon 6	DBN DMGD/DBN IMCH	11427	1001-05 STP	28/05
19360	Spring Creek Daybeacon 8	DBN IMCH/DBD DEST	11427	1002-05 STP	28/05
19365	Spring Creek Daybeacon 9	DBN IMCH	11427	N/A	28/05
19370	Spring Creek Daybeacon 11	DBN DEST	11427	N/A	28/05
19430	Spring Creek Daybeacon 26	DBN IMCH	11427	N/A	28/05
19445	Spring Creek Daybeacon 30	DBN IMCH/DBD DEST	11427	N/A	35/04
19510	Spring Creek Daybeacon 50	DBN DEST	11427	N/A	28/05
20355	Upper Myakka River Daybeacon A	DBN IMCH	11426	N/A	44/04
20450	Ponce De Leon Park Channel Light 2	LT IMCH	11426	N/A	44/04
20460	Ponce De Leon Park Channel Daybeacon 6	DBN DEST	11426	N/A	02/05
20525	Isles Channel Daybeacon 7	DBN IMCH	11426	N/A	02/05
20560	Isles Cross Channel Daybeacon 3	DBN DEST	11426	N/A	02/05
21245	Charlotte Harbor Yacht Club Daybeacon 1	DBN IMCH	11426	N/A	08/04

21250	Charlotte Harbor Yacht Club Daybeacon 2	DBN IMCH	11426	N/A	02/05
21255	Charlotte Harbor Yacht Club Daybeacon 3	DBN IMCH	11426	N/A	08/04
21260	Charlotte Harbor Yacht Club Daybeacon 4	DBN IMCH	11426	N/A	02/05
21265	Charlotte Harbor Yacht Club Daybeacon 5	DBN IMCH	11426	N/A	08/04
21270	Charlotte Harbor Yacht Club Daybeacon 6	DBN IMCH	11426	N/A	02/05
21275	Charlotte Harbor Yacht Club Daybeacon 7	DBN IMCH	11426	N/A	02/05
21280	Charlotte Harbor Yacht Club Daybeacon 8	DBN IMCH	11426	N/A	02/05
21285	Charlotte Harbor Yacht Club Daybeacon 9	DBN IMCH	11426	N/A	08/04
21355	Stump Pass Daybeacon 4	DBN DEST	11425	722-06 STP	22/06
21360	Stump Pass Daybeacon 5	DBN DEST	11425	N/A	22/06
21370	Stump Pass Daybeacon 6	DBN DEST	11425	720-06 STP	22/06
21375	Stump Pass Daybeacon 7	DBN DEST	11425	719-06 STP	22/06
21395	Stump Pass Marina Daybeacon 3	DBN DEST	11425	1669-05 STP	45/05
21400	Stump Pass Marina Daybeacon 4	OFF STA	11425	1670-05 STP	45/05
21405	Stump Pass Marina Daybeacon 5	OFF STA	11425	1671-05 SEC ST	45/05
21410	Stump Pass Marina Daybeacon 6	OFF STA	11425	1672 / 1697 STP	45/05
21415	Stump Pass Marina Light	LT IMCH	11425	N/A	19/03
21456.03	Dona Bay Channel Daybeacon 13	DBN DEST	11425	0874-05 STP	23/05
21456.12	Dona Bay Channel Daybeacon 21	DBN IMCH	11425	0875-05 STP	23/05
21500.1	Big Sarasota Pass Daybeacon 1	DBD DEST	11425	NA	37/05
21505	Big Sarasota Pass Daybeacon 9	DBN DEST	11425	679-06 STP	22/06
21520	Big Sarasota Pass Daybeacon 14	DBN DEST	11425	1267-06 STP	41/06
21567.5	Lido Key Channel Daybeacon 16	DBD DMGD	11425		22/06
21570.2	North Siesta Key Daybeacon 3	DBD DEST	11425	0354-06 STP	11/06
21660	Country Club Shores Daybeacon 2	DBN IMCH	11425	N/A	28/05
21665	Country Club Shores Daybeacon 4	DBN IMCH	11425	N/A	28/05
21670	Country Club Shores Daybeacon 6	DBD DEST	11425	0840-05 STP	23/05
21675	Country Club Shores Daybeacon 8	DBD DMGD	11425		22/06
21680	Country Club Shores Daybeacon 10	DBN IMCH	11425	N/A	28/05
21685	Country Club Shores Daybeacon 12	DBD DEST	11425	N/A	28/05
21690	Country Club Shores Daybeacon 14	DBN DEST	11425	N/A	28/05
21950	Fifty-Ninth Street Boat Ramp Daybeacon 3	DBN DEST	11415	N/A	28/05
22815.5	MacDill Air Force Base Prohibited Area Daybeacon (24)	DBN DEST	11416	N/A	24/03
23135	Big Bend Channel East Upper Range Rear Light	LT EXT	11400	1031-06 STP	29/06
23950.5	Old Tampa Bay Pipeline West Light	LT EXT	11416	NA	13/06
23985	Culbreath Cay Daybeacon 1	DBN DEST	11416	0876-05 STP	13/05
23990	Culbreath Cay Daybeacon 2	DBN DEST	11416	0877-05 STP	13/05
23995	Culbreath Cay Daybeacon 4	DBN DEST	11416	N/A	13/05
24005	Culbreath Cay Daybeacon 6	DBN IMCH	11416	856-04 STP	26/04
24015	Culbreath Cay Daybeacon 8	DBN DEST	11416	857-04 STP	26/04
24040	Bridgeview Channel Daybeacon 1	DBN DEST	11416	N/A	13/05
24050	Bridgeview Channel Daybeacon 3	DBN DMGD	11416	N/A	14/01
24055	Bridgeview Channel Daybeacon 4	DBN IMCH	11416	390-04 STP	12/04
24195	Dana Shores Daybeacon 6	DBN DEST	11416	1461-06 STP	47/06
24250	Dana Shores Daybeacon 22	DBN DMGD	11416	1462-06 STP	47/06
24265	Bay Crest Daybeacon 3	MISSING	11416	1456-06 STP	47/06
24270	Bay Crest Daybeacon 4	DBN DMGD	11416	1457-060 STP	47/06
24280	Bay Crest Daybeacon 6	DBN DMGD	11416	1458-06	47/06
24340	Cabbagehead Bayou Daybeacon 12	DBN DEST		1204-06 STP	38/06

24620	Apollo Beach Jetty Obstruction Daybeacon	DBN DEST	11416	NA	45/06
24625	Apollo Beach Daybeacon 4	DBN DMGD	11416	1463-06 STP	47/06
24653	Symphony Isles Danger Daybeacon	DBN IMCH	11416	1464-06 STP	47/06
25430	Bunces Pass Daybeacon 12	HAZ NAV/DBN DEST	11415	1333-06 STP	43/06
25510.1	Dent Channel Daybeacon 2	DBN DEST	11411	0538-06 STP	18/06
25515	Dent's Channel Daybeacon 3	TRLB	11415	1200-05 STP	29/05
25555	South Dent Channel Daybeacon 7	DBN DEST	11411	N/A	24/03
25600.01	Treasure Island North Terminal Groin Obstruction Light	LT EXT	11411	1089-06 STP	33/06
25655	Clearwater Beach Lighted Buoy A	OFF STA	11412	N/A	11/05
25660	Clearwater Beach Lighted Buoy B	OFF STA	11412	N/A	11/05
25665	Clearwater Beach Lighted Buoy C	OFF STA	11412	0936-05 STP	11/05
25670	Clearwater Beach Lighted Buoy D	OFF STA	11412	0935-05 STP	11/05
25675	Clearwater Beach Lighted Buoy E	OFF STA	11412	N/A	11/05
27080	Hudson Creek Daybeacon 18	DBN DEST	11409	NA	18/06
27190	Sea Pines Channel Daybeacon 14	DBN DEST	11409	NA	13/06
27665	Hernando Beach Channel Light 36	LT EXT	11409	1512-06 STP	49/06
28715	Homosassa River Daybeacon 2	DBD DMGD/DBD DEST	11409	1237-06 STP	40/06
28915	Salt River Daybeacon 2	DBN IMCH	11409	NA	13/06
28920	Salt River Daybeacon 3	DBN IMCH	11409	NA	13/06
28925	Salt River Daybeacon 5	DBN IMCH	11409	NA	13/06
28930	Salt River Daybeacon 6	DBN IMCH	11409	NA	13/06
28935	Salt River Daybeacon 7	DBN IMCH	11409	NA	13/06
28940	Salt River Daybeacon 8	DBN DMGD/DBN IMCH	11409	0418-06 STP	13/06
28945	Salt River Daybeacon 9	DBN IMCH	11409	NA	13/06
28950	Salt River Daybeacon 10A	DBN IMCH	11409	NA	13/06
28960	Florida Power Corporation Channel Light 3	LT EXT	11408	1328-06 STP	42/06
28965	Florida Power Corporation Channel Light 4	DBN IMCH	11408	1284-06 STP	38/06
28975	Florida Power Corporation Channel Light 6	LT IMCH	11408	1285-06 STP	42/06
28985	Florida Power Corporation Channel Light 8	LT IMCH	11408	1286-06 STP	42/06
28990	Florida Power Corporation Channel Light 9	LT IMCH	11408	1287-06 STP	42/06
28995	Florida Power Corporation Channel Light 10	LT EXT	11408	1288-06 STP	38/06
29000	Florida Power Corporation Channel Light 12	LT IMCH	11408	1289-06 STP	42/06
29005	Florida Power Corporation Channel Light 13	LT IMCH	11408	1290-06 STP	42/06
29015	Florida Power Corporation Channel Light 16	LT IMCH	11408	1292-06 STP	42/06
29020	Florida Power Corporation Channel Light 17	LT IMCH	11408	1293-06 STP	42/06
29025	Florida Power Corporation Channel Light 18	LT IMCH	11408	1294-06 STP	42/06
29040	Florida Power Corporation Channel Light 23	LT IMCH	11408	1297-06 STP	42/06
29045	Florida Power Corporation Channel Light 25	LT IMCH	11408	1298-06 STP	42/06
29050	Florida Power Corporation Channel Light 26	LT IMCH	11408	1299-06 STP	42/06
29055	Florida Power Corporation Channel Light 27	LT IMCH	11408	1300-06 STP	42/06
29065	Florida Power Corporation Channel Light 29	LT IMCH	11408	1301-06 STP	42/06
29070	Florida Power Corporation Channel Light 31	LT IMCH	11408	1302-06 STP	42/06
29085	Florida Power Corporation Channel Light 34	LT EXT	11408	1304-06 STP	42/06

29090	Florida Power Corporation Channel Light 35	LT IMCH	11408	1305-06 STP	42/06
29095	Florida Power Corporation Channel Light 36	LT IMCH	11408	1306-06 STP	42/06
29100	Florida Power Corporation Channel Light 37	LT EXT	11408	1307-06 STP	38/06
29120	Florida Power Corporation Channel Light 41	LT IMCH	11408	NA	42/06
29135	Florida Power Corporation Channel Light 44	LT IMCH	11408	1310-06 STP	42/06
29140	Florida Power Corporation Channel Light 45	LT EXT	11408	1311-06 STP	38/06
30085	Suwannee River Alligator Pass Light 2	DBD DEST	11408	NA	17/06
30170	Suwannee River McGriff Pass Daybeacon 1	LT EXT	11408	NA	13/06
30270	Salt Creek Daybeacon 2	HAZ NAV/DBN DEST	11408	NA	13/06
30280	Salt Creek Daybeacon 5	DBD DMGD	11408	NA	13/06
30315	Salt Creek Daybeacon 17	HAZ NAV/DBN DEST	11408	1373-05 STP	35/05
30330	Salt Creek Daybeacon 21	DBN DMGD	11408	NA	13/06
30690	Cedar Island Daybeacon 1	DBN DMGD	11407	506-01 STP	28/01
30695	Cedar Island Daybeacon 2	DBN DMGD	11407	507-01 STP	28/01
30825	TMT Outer Dolphin Obstruction Light	LT EXT	25670	319-05 SJN	47/05
30830	TMT Middle Dolphin Obstruction Light	LT EXT	25670	320-05 SJN	47/05
31230	Sea Lovers Pier Buoy West Light	LT EXT	25667	N/A	41/04
31335.1	Puerto del Ray North Channel Lighted Buoy 6	LT EXT	25663	231-06 SJN	37/06
31535	Sonda de Vieques Obstruction Lighted Buoy LAE	MISSING	25664	N/A	16/97
31915	Aguirre Power Plant Lighted Buoy 6	LT EXT	25687	096-06 SJN	16/06
32420	Redhook Bay Buoy 1	BUOY DMGD	25647	365-02 GAN	45/02
32425	Redhook Bay Buoy 2	OFF STA	25647	N/A	45/04
32430	Redhook Bay Buoy 3	DBN DMGD	25647	NA	19/06
32440	Redhook Bay Junction Buoy P	OFF STA	25647	N/A	45/04
32450	Redhook Bay South Channel Buoy 2	OFF STA	25647	N/A	45/04
32455	Redhook Bay Buoy 5	MISSING	25647	NA	19/06
32460	Redhook Bay Buoy 6	MISSING	25647	N/A	45/04
32780	Cruz Bay Buoy 1	MISSING	25647	359-02 GAN	45/02
32805	Cruz Creek Channel Buoy 1C	MISSING	25647	360-02 GAN	45/02
32810	Cruz Creek Channel Buoy 2C	MISSING	25647	NA	19/06
33200	Lime Tree Bay Port Basin Light 15	LT EXT	25641	067-06 SJN	13/06
33315	Krause Lagoon Cross Channel Lighted Buoy 1	MISSING	25641	065-06 SJN	13/06
34745	Johns Island Dock Obstruction Light	LT EXT/DBN DEST	11518	N/A	27/04
35425	Marsh Harbor Marina Daybeacon 4	DBD DMGD	11518	N/A	51/04
35585	Trenchards Inlet Tide Gauge Daybeacon	DBN IMCH	11516	N/A	03/04
35590	Station Creek West Tide Gauge Daybeacon	DBN DEST	11516	N/A	03/04
35630	Ribaut Island Dock Light G	LT EXT	11507	N/A	04/05
36232	Delegal Creek Channel Buoy 3	MISSING	11507	N/A	28/05
36233	Delegal Creek Channel Buoy 4	MISSING	11507	N/A	28/05
36235	Delegal Creek Channel Buoy 5	BUOYDMGD	11507	N/A	28/05
38843.6	Vilano Marina North Channel Daybeacon 4	DBN IMCH	11485	N/A	06/04
42130	Indian Cove Marina Daybeacon 1	DBN DEST	11485	N/A	17/04
42135	Indian Cove Marina Daybeacon 2	DBN IMCH	11485	N/A	17/04
42290	Diamond 99 Marina Daybeacon 1	DBD DEST	11485	NA	14/06
42300	Diamond 99 Marina Daybeacon 3	DBD DEST	11472	NA	14/06
42310	Diamond 99 Marina Daybeacon 5	DBD DEST	11472	NA	14/06
42490.1	Manatee Cove Marina Daybeacon 1	DBN DEST	11476	N/A	31/04
42490.3	Manatee Cove Marina Daybeacon 3	DBN IMCH	11476	N/A	02/05

42491	Manatee Cove Marina Range Front Light	LT EXT	11476	N/A	19/04
42492	Manatee Cove Marina Range Rear Light	LT EXT/DBN DEST	11476	N/A	44/04
42830	Central Avenue Entrance Channel Light 2	LT EXT	11476	480-05 JAX	49/05
43030	Kelly Park Channel Light 1	LT EXT	11476	N/A	16/04
43045	Kelly Park Channel Daybeacon 4	DBN DEST	11476	NA	13/06
43055	Kelly Park Channel Daybeacon 7	DBN DEST	11476	NA	13/06
43115	Intracoastal Marina Channel Daybeacon 1	DBN IMCH	11476	N/A	07/05
43120	Intracoastal Marina Channel Daybeacon 2	DBN IMCH	11476	N/A	07/05
43125	Intracoastal Marina Channel Daybeacon 3	DBN DEST	11476	N/A	14/05
43135	Intracoastal Marina Channel Daybeacon 5	DBN IMCH	11476	N/A	14/05
43140	Intracoastal Marina Channel Daybeacon 6	DBN IMCH	11476	N/A	14/05
43145	Intracoastal Marina Channel Daybeacon 7	DBN IMCH	11476	N/A	14/05
43160	Intracoastal Marina Channel Daybeacon 10	DBN IMCH	11476	N/A	14/05
43350	Tucker Channel Daybeacon 1	DBN DMGD	11472	N/A	19/04
43355	Tucker Channel Daybeacon 2	DBN DMGD	11472	N/A	19/04
43575	Coconut Point Daybeacon 1	DBN IMCH	11472	N/A	44/04
43580	Coconut Point Daybeacon 2	DBN IMCH	11472	N/A	44/04
43585	Coconut Point Daybeacon 3	DBN IMCH	11472	N/A	11/05
43590	Coconut Point Daybeacon 4	DBN IMCH	11472	N/A	11/05
43595	Coconut Point Daybeacon 5	DBN IMCH	11472	N/A	11/05
43600	Coconut Point Daybeacon 6	DBN IMCH	11472	N/A	44/04
43685.2	Channel 68 Marina Daybeacon 2	DBN DEST	11472	N/A	10/03
43700	River Run Daybeacon 1	DBN IMCH/DBD DEST	11472	N/A	17/05
43710	River Run Daybeacon 3	DBN IMCH/DBD DEST	11472	N/A	17/05
43720	River Run Daybeacon 5	DBN IMCH	11472	N/A	21/05
44005	Grand Harbor Marina Daybeacon 8	DBN IMCH	11472	N/A	28/05
44025	Grand Harbor Marina Daybeacon 12	DBN IMCH	11472	N/A	28/05
44035	Grand Harbor Marina Daybeacon 14	DBN DEST	11472	N/A	28/05
44045	Grand Harbor Marina Daybeacon 16	DBN IMCH	11472	N/A	28/05
44065	Bermuda Bay Daybeacon 1	DBN DEST/DBN IMCH	11472	N/A	08/04
44070	Bermuda Bay Daybeacon 2	DBN IMCH	11472	N/A	28/05
44075	Bermuda Bay Daybeacon 3	DBN IMCH	11472	N/A	28/05
44080	Bermuda Bay Daybeacon 4	DBN DEST	11472	N/A	29/05
44085	Bermuda Bay Daybeacon 5	DBN IMCH	11472	N/A	10/03
44090	Bermuda Bay Daybeacon 6	DBN DEST	11472	N/A	28/05
44095	Bermuda Bay Daybeacon 7	DBN IMCH	11472	N/A	28/05
44105	Bermuda Bay Daybeacon 9	DBN IMCH	11472	N/A	28/05
44110	Bermuda Bay Daybeacon 10	DBN DEST/DBN IMCH	11472	N/A	08/04
44115	Bermuda Bay Daybeacon 11	DBN IMCH	11472	N/A	10/03
44120	Bermuda Bay Daybeacon 12	DBN IMCH	11472	N/A	08/04
44235	Vero Marine Center Daybeacon 6	DBD DEST	11476	NA	13/06
44845	Linkport Channel Daybeacon 1	DBN DEST	11472	NA	36/06
44848	Linkport Channel Daybeacon 2	DBD DEST	11472	NA	36/06
44850	Linkport Channel Daybeacon 3	DBD DEST	11472	NA	36/06
44855	Linkport Channel Daybeacon 4	DBD DEST	11472	NA	38/06
44860	Linkport Channel Daybeacon 5	DBN DEST	11472	NA	38/06
44870	Linkport Channel Daybeacon 7	MISSING	11472	NA	38/06
44875	Linkport Channel Daybeacon 8	DBD DEST	11472	NA	38/06
44980	Village Marina Daybeacon 1	DBN DEST	11476	N/A	27/04
45540	Fairwinds Cove Daybeacon 7	DBN IMCH	11476	N/A	15/04

45560	Fairwinds Cove Daybeacon 12	DBN IMCH	11476	N/A	15/04
45585	Rigels Cove Channel Daybeacon 1	DBN IMCH	11472	N/A	15/04
45590	Rigels Cove Channel Daybeacon 2	DBN IMCH	11472	N/A	15/04
45595	Rigels Cove Channel Daybeacon 3	DBN IMCH	11472	N/A	15/04
45600	Rigels Cove Channel Daybeacon 4	DBN IMCH	11472	N/A	15/04
45605	Rigels Cove Channel Daybeacon 5	DBN IMCH	11472	N/A	15/04
45610	Rigels Cove Channel Daybeacon 6	DBN IMCH	11472	N/A	15/04
45615	Rigels Cove Channel Daybeacon 7	DBN DEST	11472	N/A	15/04
45620	Rigels Cove Channel Daybeacon 8	DBN IMCH	11472	N/A	15/04
45625	Rigels Cove Channel Daybeacon 9	DBN IMCH	11472	N/A	15/04
45630	Rigels Cove Channel Daybeacon 10	DBN IMCH	11472	N/A	15/04
45790	Anglers Cove Daybeacon 1	DBN DEST	11476	N/A	19/04
45795	Anglers Cove Daybeacon 2	DBN DEST	11476	N/A	19/04
45800	Anglers Cove Daybeacon 3	DBN DEST	11476	N/A	19/04
45805	Anglers Cove Daybeacon 4	DBN DEST	11476	N/A	19/04
45810	Anglers Cove Daybeacon 6	DBN DEST	11476	N/A	19/04
45980	Miles Grant Daybeacon 2	DBN IMCH	11476	N/A	21/04
46005	St Lucie Inlet State Park Channel Daybeacon 1	DBD DEST	11476	646-05 MIA	45/05
46010	St Lucie Inlet State Park Channel Daybeacon 2	DBD DEST	11476	647-05 MIA	45/05
46625	New Port Cove Marine Ctr Daybeacon 3	DBN DEST	11472	N/A	28/05
46630	New Port Cove Marine Ctr Daybeacon 4	DBN DEST	11472	N/A	28/05
46640	New Port Cove Marine Ctr Daybeacon 6	DBN DEST	11472	N/A	28/05
46650	New Port Cove Marine Ctr Daybeacon 8	DBN DEST	11472	NA	51/05
46855	West Palm Beach Daybeacon 1	DBN IMCH	11476	N/A	28/05
46865	West Palm Beach Daybeacon 3	DBN DEST	11476	N/A	28/05
47640	Golden Gates Marina South Obstruction Light	DBN DEST	11467	499-05 MIA	37/05
47645	Williams Island Daybeacon 1	DBN DEST	11467	286-03 MIA	22/03
47850	Keystone Point Channel Daybeacon 4	DBN DEST	11467	307-06 MIA	24/06
47880	Keystone Point Channel Daybeacon 16	DBN DEST	11467	308-06	24/06
48250	Miami Shores Channel Daybeacon 8	MISSING	11467	075-06	05/06
48500	Cloughton Island North Obstruction Daybeacon	DBN DMGD	11465	330-06 MIA	27/06
48505	Cloughton Island Middle Obstruction Daybeacon	DBN DEST	11465	637-04 MIA	51/04
48570	Villa Regina Daybeacon 5	DBN DEST	11465	587-03 MIA	49/03
48620	Deering Channel Daybeacon 3	DBN DEST	11465	437-06 MIA	38/06
48640	Deering Channel Daybeacon 7	MISSING	11465	438-06 MIA	38/06
48845	Crandon Park Marina Channel Light 14	DBN DEST	11467	540-06 MIA	43/06
49040	Dinner Key Marina South Channel Light 13	LT EXT	11465	406-06 MIA	35/06
49085	Key Biscayne Yacht Club Light 4	LT IMCH	11465	597-02 MIA	49/02
49160	Four Way Channel Directional Daybeacon	DBN DEST	11465	N/A	39/97
49190	Four Way Channel Daybeacon 8	DBN DEST	11465	065-03 MIA	05/03
49225	Hughes Cove East Obstruction Daybeacon	DBN DMGD	11465	N/A	24/98
49245	Entrada Channel Daybeacon 3	DBN DEST	11465	340-04 MIA	29/04
49340	Gables Estates Light 2	DBD DEST	11465	NA	17/06
49345	Gables Estates Daybeacon 2A	DBD DEST	11465	NA	17/06
49350	Gables Estates Daybeacon 3	DBD DEST	11465	NA	17/06
49360	Gables Estates Daybeacon 5	DBD DEST	11465	NA	17/06
49678.5	Boca Chita Channel Buoy 4	MISSING	11465	NA	42/06
49679.5	Boca Chita Channel Buoy 6	MISSING	11465	NA	42/06
49790	Black Point Channel Daybeacon 12	DBN IMCH/NUM MSNG/DAMGD	11464	NA	42/06
49805	Black Point Channel Daybeacon 15	DBN DEST	11464	NA	42/06

49815	Black Point Channel Daybeacon 17	MISSING	11464	NA	42/06
49865	Convoy Point Light 1	LT EXT	11467	603-06 MIA	47/06
49870	Convoy Point Light 2	LT EXT	11467	604-06 MIA	47/06
49955	Turkey Point Channel Light 2	LT EXT/DBD DEST	11464	182-06 MIA	15/06
49955	Turkey Point Channel Light 2	LT EXT/DBN DEST	11464	182-06 MIA	35/05
49975	Turkey Point Channel Buoy 4A	MISSING	11464	461-05 MIA	38/05
49995	Turkey Point Channel Buoy 8	LT EXT	11464	520-06 MIA	41/06
50160	Grayvik Daybeacon 1	DBN IMCH	11451	N/A	28/05
50170	Grayvik Daybeacon 3	DBN IMCH/FADED	11451	NA	17/06
50175	Grayvik Daybeacon 4	DBN DEST	11451	NA	17/06
50295	The Moorings Daybeacon 2	DBN DEST	11451	NA	19/06
50300	The Moorings Daybeacon 3	DBD DEST	11451	NA	19/06
50305	The Moorings Daybeacon 4	DBD DEST	11451		19/06
50505.05	Hammer Point Harbor Obstruction Daybeacon C	MISSING	11463	NA	09/06
50505.06	Hammer Point Harbor Obstruction Daybeacon D	MISSING	11463	NA	09/06
50506.02	Hammer Point Harbor Obstruction Daybeacon J	DBN DMGD	11463	NA	09/06
50506.08	Hammer Point Harbor Obstruction Daybeacon P	MISSING	11463	N/A	09/06
50506.09	Hammer Point Harbor Obstruction Daybeacon Q	MISSING	11463	NA	09/06
50905	St. Lucie River (North Fork) Daybeacon 11	DBN IMCH	11428	N/A	04/03
50915	St. Lucie River (North Fork) Daybeacon 13	DBN DMGD/DBD DEST	11428	723-05 MIA	47/05
50955	St. Lucie River (North Fork) Daybeacon 25	DBD DEST	11428	NA	13/06
51975	Buckhead Ridge Canal Light BR	LT IMCH	11428	N/A	53/02
52385	Admiralty Yacht Club Daybeacon 8	DBN IMCH	11428	1716-04 STP	43/04
52420	Indian Creek Daybeacon 1	DBN IMCH	11428	1717-04 STP	43/04
52435	Indian Creek Daybeacon 4	DBN IMCH	11428	N/A	39/04
52440	Indian Creek Daybeacon 5	DBN IMCH	11428	N/A	39/04
52445	Indian Creek Daybeacon 6	DBN IMCH	11428	N/A	39/04
52450	Indian Creek Daybeacon 7	DBN IMCH	11428	1718-04 STP	39/04
52455	Indian Creek Daybeacon 8	DBN IMCH	11428	N/A	39/04
52460	Indian Creek Daybeacon 9	DBN IMCH	11428	N/A	39/04
52465	Indian Creek Daybeacon 10	DBN IMCH	11428	N/A	39/04
52660	Marinatown Daybeacon 2	DBN DEST	11428	0559-06 STP	42/04
52685	Marinatown Daybeacon 7	DBN IMCH	11428	N/A	39/04
52745	Marinatown Daybeacon 19	DBN IMCH/DBD DEST	11428	0564-06 STP	39/04
52775	Marinatown Daybeacon 25	DBN DEST	11428	0566-06 STP	39/04
52821	Caloosa Isle Marina Daybeacon 1	DBN DEST	11427	NA	14/06
53515	McGregor Isles Daybeacon 5	MISSING	11427	0569-06 STP	18/06
53565	Harney Point Rim Channel Daybeacon 8	DBN DEST	11427	N/A	27/04
53590	Harney Point Rim Channel Daybeacon 14	DBD DMGD	11427	NA	14/06
54135	Redfish Point Rim Channel Light 20	LT EXT	11427	NA	14/06
54195	Peppertree Pointe E Obstruction Daybeacon	DBD DMGD	11427	0926-06 STP	27/06
54210	Peppertree Pointe Daybeacon 3	DBD DEST	11427	0925-06 STP	14/06
54220	Peppertree Pointe Daybeacon 5	DBD DEST	11427	0924-06 STP	14/06
54225	Peppertree Pointe Daybeacon 6	DBD DMGD	11427	0923-06 STP	27/06
54230	Peppertree Pointe Daybeacon 7	DBD DMGD	11427	0922-06 STP	27/06
54235	Peppertree Pointe Daybeacon 8	DBD DMGD	11427	0921-06 STP	27/06
54240	Peppertree Pointe Daybeacon 9	DBD DMGD	11427	0920-06 STP	27/06
54298	Van Riper Channel Daybeacon 10	DBN DEST	11427	NA	14/06
54298.5	Van Riper Channel Daybeacon 12	DBN DEST	11427	NA	14/06

54560	Saint Charles Harbour Daybeacon 15	DBD DMGD	11427	0939-06 STP	27/06
54590	Saint Charles Harbour Daybeacon 21	DBD DMGD	11427	0937-06 STP	27/06
54730	Shell Point Village Daybeacon 5	DBN IMCH	11427	N/A	28/05
54930	Manatee Bay Property Channel Daybeacon 1	DBN IMCH/STRUCT DEFAC	11427	0940-06 STP	27/06
55315	Paradise Canal Daybeacon 2	DBD DEST	11427	0929-06 STP	14/06
55320	Paradise Canal Daybeacon 3	DBD DEST	11427	0930-06 STP	14/06
55325	Paradise Canal Daybeacon 4	DBD DEST	11427	0931-06 STP	14/06
55815	South Seas Plantation Daybeacon 8	DBD DEST	11427	0935-06 STP	27/06
55880	South Seas Plantation Daybeacon 21	DBD DEST	11427	0936-06 STP	10/06
56778	Placida Pier Northeast Obstruction Light	LT EXT	11425	990-02 STP	33/02
56778.5	Placida Pier Southeast Obstruction Light	LT EXT	11425	990-02 STP	33/02
57295	Daughtrey Landing Daybeacon 3	DBN DEST	11425	724-06 STP	21/05
57358.3	Gottfried Creek Daybeacon 22	DBN DEST	11425	0968-06 STP	17/04
57359.7	Englewood Channel Daybeacon 12	DBN IMCH	11425	N/A	21/03
57440	Indian Mound Pk Daybeacon 2	DBN DEST	11425	0969-06 STP	28/05
57470	Royal Palm Marina Buoy 1	BUOYDMGD	11425	0943-06 STP	21/04
57475	Royal Palm Marina Buoy 2	MISSING	11425	0949-06 STP	28/05
57480	Royal Palm Marina Buoy 4	MISSING	11425	0948-06 STP	28/05
57485	Royal Palm Marina Buoy 5	MISSING	11425	N/A	28/05
57490	Royal Palm Marina Buoy 6	BUOYDMGD	11425	0945-06 STP	28/05
57495	Royal Palm Marina Buoy 8	MISSING	11425	0944-06 STP	28/05
57500	Royal Palm Marina Buoy 10	ADRIFT	11425	0967-06 STP	28/05
57505	Royal Palm Marina Buoy 11	MISSING	11425	0966-06 STP	28/05
57510	Royal Palm Marina Buoy 12	BUOYDMGD	11425	0965-06 STP	28/05
57515	Royal Palm Marina Buoy 13	BUOYDMGD	11425	0964-06 STP	28/05
57520	Royal Palm Marina Buoy 14	BUOYDMGD	11425	0963-06 STP	28/05
57525	Royal Palm Marina Buoy 15	MISSING	11425	0962-06 STP	28/05
57530	Royal Palm Marina Buoy 16	MISSING	11425	0960-06 STP	28/05
57535	Royal Palm Marina Buoy 18	BUOYDMGD	11425	0961-06 STP	28/05
57570	Lemon Bay Daybeacon 3	DBD DMGD	11425	714-06 STP	22/06
57619.5	Forked Creek Southeast Obstruction Daybeacon	DBN DEST	11425	715-06 STP	28/05
58175	Midnight Pass Lagoon Daybeacon 2	DBN IMCH	11425	N/A	13/05
58205.4	Midnight Pass Daybeacon 15	DBN DEST	11425	1893-05 STP	51/05
58530	Sarasota Bay Artificial Reef Daybeacon E	DBN DEST	11425	N/A	10/04
58540	Tony Saprito Fishing Pier South Light	LT EXT	11425	N/A	28/05
58545	Tony Saprito Fishing Pier North Light	LT EXT	11425	N/A	28/05
58645	Bay Isles South Channel Daybeacon 2	DBN IMCH	11425	NA	22/06
58655	Bay Isles South Channel Daybeacon 6	DBN IMCH	11425	0847-05 STP	23/05
58665	Bay Isles South Channel Daybeacon 10	DBN IMCH	11425	NA	22/06
58667.35	Bay Isles Perimeter Channel Daybeacon 12	DBN DMGD	11425	699-06 STP	28/05
58667.6	Bay Isles Perimeter Channel Daybeacon 20	DBN IMCH/STRUCT DEFAC	11425	697-06 STP	22/06
58667.65	Bay Isles Perimeter Channel Daybeacon 22	DBN IMCH/STRUCT DEFAC	11425	698-06	22/06
58680	Longboat Key Moorings Light 1	LT EXT	11425	0576-06 STP	18/06
58685	Longboat Key Moorings Light 2	MISSING	11425	0578 / 706-06	28/05
58690	Longboat Key Moorings Daybeacon 3	DBN DEST	11425	N/A	17/04
58710	Longboat Key Moorings Daybeacon 7	DBD DEST	11425	705-06 STP	22/06
58715	Longboat Key Moorings Daybeacon 8	DBD DEST	11425	704-06 STP	22/06
58725	Longboat Key Moorings Daybeacon 10	DBN IMCH	11425	N/A	18/05
58730	Longboat Key Moorings Daybeacon 11	DBN IMCH	11425	N/A	18/05
58740	Sarasota Bay Obstruction Daybeacon	DBN IMCH	11425	703-06 STP	39/04
59030	Longboat Harbor Channel Daybeacon 11	DBD DMGD	11425	696-06 STP	22/06

59145	Longboat Harbor North Marina Daybeacon 6	DBD DEST	11425	729-06 STP	22/06
59195	Cannons Marina DBN 2	DBN IMCH/STRUCT DEFAC	11425	690-06 STP	22/06
59245	Buccaneer Inn Daybeacon 10	DBN DEST	11425	698-06 STP	22/06
59265	Buccaneer Inn Daybeacon 14	DBD DMGD	11425	688-06 STP	22/06
59270	Buccaneer Inn Daybeacon 16	DBD DMGD	11425	687-06 STP	22/06
59280	Buccaneer Inn Daybeacon 18	DBN IMCH	11425	0982-06 STP	21/05
59305	Buccaneer Inn Daybeacon 26	DBN DMGD	11425	0981-06 STP	23/05
59485	Coral Shores Channel Daybeacon 25	DBN IMCH	11425	0546-06 STP	28/05
59510	Coral Shores Channel Daybeacon 30	DBN IMCH	11425	0975-06 STP	27/06
59540	Mt Vernon & Coral Shores Daybeacon 2N	DBN IMCH	11425	N/A	28/05
59650	Cove Sound Moorings Daybeacon 1	DBD DEST	11425	0915-06 STP	27/06
59655	Cove Sound Moorings Daybeacon 2	DBD DEST	11425	0916-06 STP	27/06
59657	Cove Sound Moorings Channel Daybeacon 3	DBD DEST	11425	0941-06 STP	27/06
59657.5	Cove Sound Moorings Channel Daybeacon 4	DBD DEST	11425	0942-06 STP	27/06
59660	Palma Sola Bay Channel Daybeacon 7	DBN IMCH	11425	N/A	18/03
59730	Perico Bayou Channel Daybeacon 12	DBN IMCH	11415	N/A	19/04
59745	Perico Bayou Channel Daybeacon 14A	DBN DMGD	11415	N/A	19/04
59785	San Remo Shore Channel Daybeacon 8	DBN DEST	11425	678-06 STP	22/06
59815	Palma Sola Bay Channel Daybeacon 9	DBN DEST	11425	0283-06 STP	09/06
59860	Palma Sola Bay Channel Daybeacon 18	DBD DEST	11425	0914-06 STP	27/06
60010	Kingfish Boat Ramp Daybeacon 2	DBD DMGD	11415	0416-06 STP	14/06
60020	Kingfish Boat Ramp Daybeacon 5	DBN DMGD	11415	0599-06 STP	14/06
60025	Kingfish Boat Ramp Daybeacon 6	DBD DEST	11415	1562-04 834-06	39/04
60030	Kingfish Boat Ramp Daybeacon 7	DBD DMGD	11415	0598-06 STP	14/06
60035	Kingfish Boat Ramp Daybeacon 8	DBD DEST	11425	0412-06 STP	14/06
60045	Kingfish Boat Ramp Daybeacon 10	DBD DEST	11415	0413-06 STP	14/06
60050	Kingfish Boat Ramp Daybeacon 11	DBD DEST	11415	0414-06 STP	14/06
60055	Kingfish Boat Ramp Daybeacon 12	DBN IMCH	11415	N/A	21/03
60190	Anna Maria Channel Daybeacon 1	DBD DMGD	11415	0539-06 STP	17/06
60245	Anna Maria Channel Daybeacon 12	DBN IMCH	11415	0910-06 STP	05/05
60250	Anna Maria Channel Shoal Daybeacon A	DBN IMCH	11415	N/A	05/05
60640	Bayway Isles Channel Daybeacon 5	DBN IMCH	11411	0940-05 STP	13/05
60670	Bayway Isles Channel Daybeacon 14	DBN IMCH	11411	N/A	13/05
60755	Pasadena Yacht Club Channel Daybeacon 1	DBD DMGD	11411	NA	13/06
61165	Jungle Beach Daybeacon 1	DBD DMGD	11411	1278-06 STP	42/06
61190	Jungle Beach Daybeacon 6	DBN DEST		1279-06 STP	42/06
62245	Tarpon Cove Daybeacon 20	DBD DMGD	11411	NA	17/06
	Ribaut Island Dock Light A	LT EXT	11507	N/A	04/05
	Ribaut Island Dock Light C	LT EXT	11507	N/A	04/05
	Upper Cooper River Daybeacon 19	DBN DEST	11527	186-05 CHA	23/05

DISCREPANCIES (PRIVATE AIDS) CORRECTED

LLNR	Aid Name	Status	Chart No.	BNM Ref.	LNM St	LNM End
300	Fripp Island Drydock Fish Haven B	DISCONTINUED	11517	N/A	30/03	49/06
27495	Hernando Beach Channel Entrance Light	WATCHING PROPERLY	11409	N/A	42/06	49/06
27795	Hernando Beach Channel Shoal Daybeacon	WATCHING PROPERLY	11409	N/A	42/06	49/06
27905	Hernando Beach Channel Daybeacon 100	WATCHING PROPERLY	11409	N/A	42/06	49/06
27910	Hernando Beach Channel Daybeacon 102	WATCHING PROPERLY	11409	N/A	42/06	49/06
28085	Bayport Channel Daybeacon 16	WATCHING PROPERLY	11409	N/A	42/06	49/06
56230	Wilson Cut Channel Daybeacon 1	WATCHING PROPERLY	11427	N/A	43/04	49/06

56235	Wilson Cut Channel Daybeacon 2	WATCHING PROPERLY	11427	N/A	43/04	49/06
56245	Wilson Cut Channel Daybeacon 4	WATCHING PROPERLY	11427	N/A	43/04	49/06
56250	Wilson Cut Channel Daybeacon 5	WATCHING PROPERLY	11427	N/A	43/04	49/06
56255	Wilson Cut Channel Daybeacon 6	WATCHING PROPERLY	11427	N/A	43/04	49/06
56265	Wilson Cut Channel Daybeacon 8	WATCHING PROPERLY	11427	N/A	43/04	49/06
56290	Wilson Cut Channel Daybeacon 13	WATCHING PROPERLY	11427	N/A	43/04	49/06
56310	Wilson Cut Channel Daybeacon 17	WATCHING PROPERLY	11427	N/A	43/04	49/06

PLATFORM DISCREPANCIES

Name	Status	Position	BNM Ref.	LNM St	LNM End
None					

PLATFORM DISCREPANCIES CORRECTED

Name	Status	Position	BNM Ref.	LNM St	LNM End
None					

SECTION III - TEMPORARY CHANGES and TEMPORARY CHANGES CORRECTED

This section contains temporary changes and corrections to Aids to Navigation for this edition. When charted aids are temporarily relocated for dredging, testing, evaluation, or marking an obstruction, a temporary correction shall be listed in Section IV giving the new position.

TEMPORARY CHANGES

LLNR	Aid Name	Status	Chart No.	BNM Ref.	LNM St	LNM End
625	Cape Canaveral Light	DISCONTINUED	11481	015-06 Jax	03/06	
6220	Brunswick Point Cut Lighted Buoy 26	RELOCATED FOR DREDGING	11489	N/A	12/06	
6225	Brunswick Point Cut Lighted Buoy 27	RELOCATED FOR DREDGING	11489	N/A	12/06	
22270	Egmont Channel Lighted Buoy 9	RELOCATED FOR DREDGING	11412	1186-06 STP	38/06	
22275	Egmont Channel Lighted Buoy 10	RELOCATED FOR DREDGING	11412	1183-06 STP	38/06	
22295	Egmont Channel Lighted Buoy 11	RELOCATED FOR DREDGING	11415	1235-06 STP	33/06	
22300	Egmont Channel Lighted Buoy 12	RELOCATED FOR DREDGING	11415	1235-06 STP	33/06	
22325	Egmont Channel Lighted Buoy 17	RELOCATED FOR DREDGING	11415	1432-06 STP	46/06	49/06
22345	Mullet Key Channel Lighted Buoy 19	RELOCATED FOR DREDGING	11415	1432-06 STP	46/06	49/06
22390	Mullet Key Channel Lighted Buoy 25	RELOCATED FOR DREDGING	11415	1432-06 STP	46/06	49/06
22500	Tampa Bay Cut B Channel Lighted Buoy 6B	RELOCATED FOR DREDGING	11416	1801-04 STP	44/04	
22515	Port Manatee Channel Lighted Buoy 1	RELOCATED FOR DREDGING	11415	N/A	02/06	
22520	Port Manatee Channel Lighted Buoy 2	RELOCATED FOR DREDGING	11415	016-06 STP	02/06	
22530	Port Manatee Channel Lighted Buoy 3	RELOCATED FOR DREDGING	11415	1977-04 STP	48/04	
22550	Port Manatee Channel Light 7	RELOCATED FOR DREDGING	11415	021-06 STP	02/06	

TEMPORARY CHANGES CORRECTED

LLNR	Aid Name	Status	Chart No.	BNM Ref.	LNM St	LNM End
None						

PLATFORM TEMPORARY CHANGES

Name	Status	Position	BNM Ref.	LNM St	LNM End
None					

PLATFORM TEMPORARY CHANGES CORRECTED

Name	Status	Position	BNM Ref.	LNM St	LNM End
None					

SECTION IV - CHART CORRECTIONS

This section contains corrections to federally and privately maintained Aids to Navigation, as well as NOS corrections.

This section contains corrective actions affecting chart(s). Corrections appear numerically by chart number, and pertain to that chart only. **It is up to the mariner to decide which chart(s) are to be corrected.** The following example explains individual elements of a typical chart correction.

Chart Number	Chart Edition	Edition Date	Last Local Notice to Mariners	Horizontal Datum Reference	Source of Correction	Current Local Notice to Mariners
12327	91st Ed.	19-APR-97	Last LNM: 26/97	NAD 83		27/97
<i>Chart Title:</i> NY-NJ-NEW YORK HARBOR - RARITAN RIVER						
Main Panel 2245 NEW YORK HARBOR					CGD01	
(Temp)	ADD	NATIONAL DOCK CHANNEL BUOY 3			at 40-41-09.001N	074-02-48.001W
		Green can				
	Corrective Action	Object of Corrective Action				Position

(Temp) indicates that the chart correction action is temporary in nature. Courses and bearings are given in degrees clockwise from 000 true.

Bearings of light sectors are toward the light from seaward. The nominal range of lights is expressed in nautical miles (NM) unless otherwise noted.

11411	16th Ed.	01-JUL-06	Last LNM: 48/06	NAD 83		49/06
<i>Chart Title:</i> Intracoastal Waterway Tampa Bay to Port Richey						
CHART FL - ICW -TAMPA BAY TO PORT RICHEY. Page/Side: N/A						
RELOCATE	The Narrows Daybeacon 26				CGD07 from 27-51-53.544N to 27-51-53.675N	082-50-47.014W 082-50-47.251W
RELOCATE	The Narrows Light 27				CGD07 from 27-51-53.006N to 27-51-52.992N	082-50-48.506W 082-50-48.540W
RELOCATE	The Narrows Light 29				CGD07 from 27-52-19.944N to 27-52-20.222N	082-50-58.714W 082-50-58.590W

11412	44th Ed.	01-JUN-06	Last LNM: 48/06	NAD 83		49/06
<i>Chart Title:</i> Tampa Bay and St. Joseph Sound						
Main Panel 175 TAMPA BAY AND ST JOSEPH SOUND. Page/Side: N/A						
CHANGE	Tampa Bay Cut E Channel Lower Range Front Light to Day/Night FI R 2.5 (1)s 20FT 5M				CGD07 at 27-42-45.290N	082-32-20.476W
CHANGE	Tampa Bay Cut E Channel Lower Range Rear Light to Day/Night 47FT				CGD07 at 27-42-12.344N	082-32-32.458W
ADD	Tampa Bay Cut E Channel Lower Range Front Light Passing Light 23FT 4M FI R 2.5s FI R 2.5s				CGD07 at 27-42-45.290N	082-32-20.476W

082-32-32.458W

49/06

082-32-20.476W

082-32-32.458W

082-32-20.476W

082-32-32.458W

49/06

082-22-37.179W
082-22-37.351W

082-22-56.559W
082-22-56.471W

082-23-50.259W
082-23-50.320W

082-23-49.239W
082-23-49.047W

082-24-05.499W
082-24-05.369W

082-24-16.839W
082-24-16.736W

082-22-32.619W
082-22-32.546W

082-24-06.999W
082-24-06.930W

082-24-25.120W
082-24-24.968W

082-26-20.295W
082-26-20.227W

49/06

RELOCATE Matanzas Pass Channel Light 12

CGD07
from 26-27-45.057N
to 26-27-46.121N

081-57-53.561W
081-57-53.695W

11485 34th Ed. 01-APR-05 Last LNM: 48/06 NAD 83

49/06

ChartTitle: Intracoastal Waterway Tolmato River to Palm Shores

CHART FL-ICW-TOLOMATO RIVER TO PALM SHORES. Page/Side: N/A

(Temp) RELOCATE New Smyrna Beach Light 21

CGD07
from 29-03-14.313N
to 29-03-14.339N

080-54-31.587W
080-54-31.425W

RELOCATE Ponce de Leon Inlet Lighted Buoy 8

CGD07
from 29-04-39.123N
to 29-04-39.576N

080-55-08.756W
080-55-08.182W

25640 42nd Ed. 01-NOV-06 Last LNM: 28/06 NAD 83

49/06

ChartTitle: Puerto Rico and Virgin Islands

Main Panel 414 PUERTO RICO AND VIRGIN ISLANDS. Page/Side: N/A

NEW EDITION Scale 1: 326,856; New edition (42 ed, 6/1/2006) due to hydrographic changes and various general changes. This NOAA chart is now available in both the Print-on Demand and digital raster formats. See <http://nauticalcharts.noaa.gov/mcd/dole.htm> for details. The corresponding traditional paper chart will be available in two to eight weeks.

NOS
--

--

SECTION V - ADVANCE NOTICES

This section contains advance notice of approved projects, changes to aids to navigation, or upcoming temporary changes such as dredging, etc. Mariners are advised to use caution while transiting these areas.

SUMMARY OF ADVANCED APPROVED PROJECTS

Approved Project(s)

Project Date

Ref. LNM

None

GEORGIA - ICW - FLORIDA PASSAGE: Discontinued Aids.

The following changes will be made to the aids to navigation system in the Intra Coastal Waterway at Florida Passage.

FLORIDA PASSAGE RANGE FRONT LIGHT (LLNR 36375) will be permanently discontinued.

FLORIDA PASSAGE RANGE REAR DAYBEACON (LLNR 36380) will be permanently discontinued.

The work is schedule to be completed the week of 18 December 2006.

Ref: LNM 46/06 through 48/06

Chart 11511

SECTION VI - PROPOSED CHANGES

Periodically, the Coast Guard evaluates its system of aids to navigation to determine whether the conditions for which the aids to navigation were established have changed. When changes occur, the feasibility of improving, relocating, replacing, or discontinuing aids are considered. This section contains notice(s) of non-approved, proposed projects open for comment. SPECIAL NOTE: Mariners are requested to respond in writing to the District office unless otherwise noted (see banner page for address).

PROPOSED WATERWAY PROJECTS OPEN FOR PUBLIC COMMENT

<u>Proposed Project(s)</u>	<u>Closing</u>	<u>Docket No.</u>	<u>Ref. LNM</u>
None			

SOUTH CAROLINA-CHARLESTON HARBOR-WANDO RIVER: Aids to be Changed.

The following changes have been proposed for the aids to navigation system in the Wando River.

Discontinue WANDO RIVER RANGE E FRONT DBN (LLNR 3465) and establish Daybeacon 31 displaying Square Green on dolphin.

Permanently discontinue WANDO RIVER RANGE E REAR DBN (LLNR 3470).

All comments should be addressed to Commander (DPW), Seventh Coast Guard District 909 S.E. 1st Ave (STE 406) Brickell Plaza Federal Bldg Miami, FI 33131 to be received by 15 December 2006.

Ref: LNM 42/06 through 48/06

Chart 11524

LNLM: 42/06

FLORIDA - SEACOAST - PORT EVERGLADES: Discontinued Aid.

The following change has been proposed for the aids to navigation system at Port Everglades.

PORT EVERGLADES SPOIL BANK WEST DAYBEACON (LLNR 810) will be permanently discontinued. The structure has been destroyed and is currently marked with a temporary unlighted buoy. The buoy will be removed.

All comments should be addressed to Commander (DPW), Seventh Coast Guard District 909 S.E. 1st Ave (STE 406) Brickell Plaza Federal Bldg Miami, FI 33131 to be received by 22 December 2006.

Ref: LNM 46/06 through 48/06

Chart 11466

SECTION VII - GENERAL

This section contains information of general concern to the Mariners. Mariners are advised to use caution while transiting these areas.

WEST INDIES-PUERTO RICO-ISLA de VIEQUES-NORTH/EAST/SOUTH COAST: Unexploded Ordance Disposal Operations.

Unexploded Ordance Disposal Operations are being conducted with estimated completion date of 2010. Daily operations will take place from 0600 to 1800 at the north, east, and southern positions of Isla de Vieques. Vessels are cautioned not to enter an area encompassed by the following coordinates: Starting north of Vieques from shore at Point 1 (one) in approximate position 18-08'42N 065-19'W, then north approximately 1NM at Point 2 (two) in approximate position 18-09'N 065-19'W, then east approximately 4NM to Point 3 (three) at approximate position 18-09'N 065-14'54"W, then south approximately 4NM at Point 4 (four) at approximate position 18-06'18"N 065-14'54"W, then west approximately 4NM to Point 5 (five) in approximate position 18-06'18N 065-19'W and end north on shore at approximate position 18-07'30"N 065-19'00W. Vessels are cautioned not to enter above mentioned area during ongoing operations. For further information contact U.S. Navy, Roosevelt roads, Ceiba, PR at (787) 865-4152 ext 460.

Ref: LNM 07/06 through 48/06

Charts: 25663 25664 25667

LNLM: 07/06

BAHAMAS-TONGUE OF THE OCEAN-AUTEC: Aid Changed.

All mariners are advised that AUTEC Site 4 Light 2 (LLNR 80000.97) is extinguished.

Ref: LNM 14/05 through 48/06

LNLM: 14/05

SOUTH CAROLINA-COOPER RIVER-DRUM ISLAND: Submerged Hazards.

U.S.Coast Guard Sector Charleston, SC has advised that possible submerged hazards/demolition debris in Cooper River for duration of Grace and Pearman bridge demolition.

Boaters are advised to stay in the main channel when transiting under the new Ravenel Bridge on the Cooper River. For complete text and

SOUTH CAROLINA-COOPER RIVER-DRUM ISLAND: Submerged Hazards.

chartlett of MSI Bulletin see enclosure number (7).

Ref: LNM 20/06 through 48/06

Chart 11524

LNM: 20/06

SOUTH CAROLINA-CHARLESTON-COOPER RIVER: Temporary Safety Zone.

The Coast Guard is establishing a temporary safety zone on the navigable waters of Hog Island Reach on the Cooper River, for the demolition and recovery operations of the Grace Memorial and Silas Pearmen Bridges. This rule prohibits entry, anchoring, mooring, or transiting within the temporary safety zone without the permission of the Captain of the Port Charleston or his designated representative. This regulation is necessary to protect life and property on the navigable waters of the Cooper River from the danger associated with the demolition and recovery operations of these bridges. This rule is effective until 8:01 a.m. on December 31, 2006.

For further information contact LTJG Calvin Summers, Sector Charleston Office of Waterways Management at (843) 724-7647.

Ref: LNM 07/06 through 48/06 Docket Number (COTP Charleston 06-003)

Chart 11524

LNM: 07/06

GEORGIA - INTRACOASTAL WATERWAY - ST SIMONS SOUND TO TOLOMATO RIVER - CUMBERLAND SOUND: Notice of Interest to Mariners.

Due to the limited commercial use of the Atlantic Intracoastal Waterway between Port Royal Sound, South Carolina (Mile 552) and Cumberland Sound, Georgia (Mile 713), the Savannah District will not receive funds to maintain the waterway to the authorized depths. The District will monitor the conditions of the waterway and publish quarterly condition reports.

Mariners are to use extreme caution when transiting the waterway until further notice.

Ref: LNM 48/03 through 48/06

Chart 11489

LNM: 48/03

FLORIDA-SEACOAST-CAPE CANAVERAL TO BETHEL SHOALS: Shuttle Launch/Landing.

The National Aeronautical and Space Administration (NASA) has requested that all mariners unless authorized by NASA please refrain from RADAR tracking of the STS-116 launch and landing.

STS-116 is scheduled for a nominal twelve (12) day mission. The possible launch opportunity extends from December 7, 2006 to December 17, 2006. The possible landing period depending on the actual launch date extends from December 19, 2006 to December 29, 2006.

For further information please contact Ms. Cathy Sham at (281) 483-0124.

Chart 11476

LNM: 49/06

FLORIDA-PALM SHORES TO WEST PALM BEACH-ST LUCIE INLET: Shoaling.

Extensive shoaling has been reported in the St Lucie Inlet, with the depth of water across the entire inlet decreased to approximately five (5) feet. All mariners are advised to stay alert and transit the area with extreme caution.

Ref: LNM 41/06 through 48/06

Chart 11472

LNM: 41/06

FLORIDA-SOMBERO KEY TO SAND KEY- WHALE HARBOR: Hazard to Navigation.

The Coast Guard has received a report of a metal pile sticking out of the water approximately one and a half feet between Whale Harbor Daybeacon 3 (LLNR 12700) and Whale Harbor Daybeacon 4 (LLNR 12705).

All mariners are advised to transit the area with caution.

Ref: LNM 30/05 through 48/06

Chart 11442

LNM: 30/05

FLORIDA-CHARLOTTE HARBOR TO TAMPA BAY-NEW PASS ENTRANCE CHANNEL: Uncharted Buoys.

The New Pass Entrance Channel is subject to continual change. Buoys are not charted because they are frequently shifted in position. The controlling depth was 8 feet for a width of 100 feet from LIGHT 7 (LLNR 21620) to the S R Bridge; thence 6 feet for a width of 100 feet to the Intracoastal Waterway and 8 feet to the basin; 7 feet in the basin except for shoaling to 3 1/2 feet in the southeast section of the basin.

BUOYS NOT CHARTED IN NEW PASS ENTRANCE CHANNEL

- Buoy 1 (LLNR 21590), - Buoy 2 (LLNR 21595), - Buoy 3A (LLNR 21600), - Buoy 5 (LLNR 21605) and - Buoy 5A (LLNR 21610)

FLORIDA-CHARLOTTE HARBOR TO TAMPA BAY-NEW PASS ENTRANCE CHANNEL: Uncharted Buoys.

Mariners are advised to use caution while transiting this area and view Local Notice to Mariners editions for shoaling information and repositioning of aids to navigation.

Ref: LNM 52/04 through 48/06

Chart 11425

LNM: 52/04

FLORIDA- TAMPA BAY ENTRANCE- TAMPA BAY: Marine Advisory.

In order to minimize the risk of collision with deep draft vessels and improve the safe transit of shallow draft vessels within the Tampa Bay and its approaches, the Coast Guard Captain of Port Tampa, Florida issues the following advisory: A NOAA survey number H-11344 conducted in July, 2004 reported that a water depth of 10 feet extends approximately 500 feet outward from both sides of the main ship channel in the waters west of the Sunshine Skyway Bridge adjacent to Egmont Channel, Mullet Key Channel, and Tampa Bay Cut "A" except in the vicinity of the Sunshine Skyway Bridge where existing security zones prohibit navigation closer than 100 feet around all bridge supports, dolphins, and rocky outcroppings from piers 88 to 135. Continuing east of the Sunshine Skyway Bridge, the advisory includes the waters adjacent to Point Pinellas Channel, Tampa Bay Cuts -A-, "B", "C", "D", "E", "F", "G", "J", "J-2", West of "K" Cut, Gadsen Point Cut, and Hillsborough Bay Cuts "A", and "C". All vessels drafting less than 10 feet may consider utilizing waters that have been identified by the 2004 NOAA survey parallel to, and within 500 feet of, the main ship channel when identifying the safest navigational course for transiting Tampa Bay and its approaches.

Ref: LNM 14/05 through 48/06

Chart 11415

LNM: 14/05

FLORIDA-ESTERO BAY TO LEMON BAY, INCLUDING CHARLOTTE HARBOR: Bridge Construction.

All mariners are advised that construction has begun on the Cape Coral bridge fender system on the Caloosahatchee River, Cape Coral, Florida.

This fender replacement project will require a tug and barge to be placed in the navigable channel partially blocking the channel during working hours only. The unaffected portion of the channel, approximately forty-five (45) feet will remain unobstructed and open to traffic.

The nature of this work and the close proximity of the channel present a hazard to mariners transiting the area. The working tug will monitor VFH Channel 16. This project will be completed on or about 22 December 2006.

All mariners are advised to use extreme caution while transiting the area. For further information please contact Petty Officer Chuck Voss at (813) 228-2191 ext 8126

Ref: LNM 42/06 through 48/06

Charts: 11426 11427

LNM: 38/06

FLORIDA-INTRACOASTAL WATERWAY-MIAMI TO ELLIOT KEY

Eighteen (18) inch yellow special purpose work buoys will be deployed in and within the immediate vicinity of the Atlantis Project Site to facilitate construction. These buoys will be periodically relocated until the project is completed.

The project is located between Latitudes 25 deg 41'900N and 25 deg 42.050W, Longitudes 080 deg 05.320N and 080 deg 05.480W.

Ref: LNM 47/06 and 48/06

Chart 11465

LNM: 47/07

FLORIDA - INTRACOASTAL WATERWAY - CHARLOTTE HARBOR TO TAMPA BAY: Hazard to Navigation. (Updated)

The Coast Guard has received a report of a possible submerged object in the vicinity of the center span of the Ringling Bridge.

On February 10, 2006 three (3) temporary buoys were deployed south of the new Ringling Causeway Bridge, in Sarasota Bay to mark submerged rocks that could pose a hazard to navigation during high tides. All three (3) buoys are east of the Gulf Intracoastal Waterway outside of the marked channel. The buoys are a standard, white, cylindrical information buoy. The buoys are anchored in place either on or in close proximity to the submerged rocks.

The buoys are one (1) foot in diameter and approximately 5 ½ feet tall, marked with a orange diamond shape and worded HAZARD. The approximate positions of the buoys are:

1. 27-19-52.620N 082-33-24.060W
2. 27-19-52.920N 082-33-23.220W
3. 27-19-53.940N 082-33-22.080W

It is requested that all mariners exercise caution when transiting this area.

Ref: LNM 08/06 through 48/06

Chart 11425

LNM: 06/06

FLORIDA-INTRACOASTAL WATERWAY-ST LUCIE INLET TO FORT MYERS AND LAKE OKECHOBEE (ROUTE 2): Reopening of

FLORIDA-INTRACOASTAL WATERWAY-ST LUCIE INLET TO FORT MYERS AND LAKE OKEECHOBEE (ROUTE 2): Reopening of Route 2.

All navigation interests are advised that all known debris has been removed from the navigation channel in Route 2 and is reopened for navigation.

With the Lake Okeechobee water elevation at 13.2 feet, the available draft for Route 2 is 4.52 feet.

Due to debris not being removed until now the U.S. Coast Guard has not been able to restore the aids to navigation. Mariners are advised that they may proceed at their own risk and should monitor all Coast Guard Broadcast Notices to Mariners.

Chart 11428

LNM: 49/06

SECTION VIII - LIGHT LIST CORRECTIONS

An Asterisk *, indicates the column in which a correction has been made to new information

(1) No.	(2) Name and Location	(3) Position	(4) Characteristic	(5) Height	(6) Range	(7) Structure	(8) Remarks	
22745	Tampa Bay Cut E Channel Lower Range Front Light	27-42-45.290N 082-32-20.476W	FI R 2.5s FI R 2.5s	20 23	5 4		Visible 0.5° each side of rangeline. Lighted throughout 24 hours. Passing light visible all around.	49/06
			*	*	*		*	
22750	Tampa Bay Cut E Channel Lower Range Rear Light 1,166 yards, 197.9° from front light.	27-42-12.344N 082-32-32.458W	Iso R 6s	47			Visible 0.5° each side of rangeline. Lighted throughout 24 hours.	49/06
				*			*	
22753	Tampa Bay Cut E Channel Lower Range Rear Passing Lights	27-42-12.344N 082-32-32.458W	FI W 6s	16	5	On same structure as Cut E Lower Range Rear Light.	Passing light visible all around. Located on NW and NE corners of lower platform.	49/06
*	*	*	*	*	*	*	*	
40625	New Smyrna Beach Light 21	29-03-14.339N 080-54-31.425W *	FI G 4s	12	4	SG-SY on pile.		49/06

ENCLOSURES

1. North Atlantic Right Whales Warning

U.S. Mandatory Ship Reporting System (WHALE SOUTH)

LNM: 44/06

2. Special Warning Number 123, Somali.

Due to continuing conditions of armed conflict and lawlessness in Somali and waters off its coast, mariners are advised to avoid the Port of Mogadishu and remain at least 200 nautical miles distant from the Somali Coast.

3. Operation On Guard

On Guard Announcement

4. Dredging and Marine Construction

Dredging and Marine Construction List

5. Shoaling and Hazardous Situations

Shoaling and Hazardous Situation List

6. Bridge Construction and Repair/Drawbridge Status

Weekly Updated Status

7. Safe Boating Programs

Auxiliary Programs and Classes

8. Marine Safety Information Bulletin

Possible Submerged Hazards/Demolition Debris in Cooper River.

Chart 11524

LNM: 20/06

9. Marine Safety Information Bulletin

Port of Palm Beach Draft Restriction - Update #1

Chart 11472

10. U.S. Coast Pilot Number 4

Change Number 6, 2006 (38th) Edition.

LNM: 49/06

U.S. Coast Pilot Number 5

Change Number 19, 2006 (34th) Edition.

LNM: 49/06

D.W. Kunkel
Rear Admiral, U.S. Coast Guard
Commander, Seventh Coast Guard District

NORTH ATLANTIC RIGHT WHALES WARNING:

From December to March the coastal waters between Altamaha Sound, GA, and Sebastian Inlet, FL, are used as calving grounds by the severely endangered North Atlantic Right Whale. This is the world's only known calving ground for this species. Right Whales are the rarest whales in the world and are protected under law from disturbance or injury by the endangered species act of 1973, and the Marine Mammal Protection act of 1972. Right Whales, especially females and their calves, are slow swimmers and frequently lie at the surface. This behavior makes them vulnerable to collisions with ships, which are a significant source of mortality. Vessels operating within 25 miles of shore between 31-27N and 29-50N and within five miles of shore from 29-50N and 28-00N should take precautions to avoid collisions with Right Whales.

Intentional close approach to right whales is prohibited and is a violation of federal law. A minimum distance of 457 meters (500 yards) must be maintained of a right whale. If a dead or entangled right whale is sighted, report it immediately to the nearest Coast Guard unit via VHF-FM radio. Additional information about right whales is available in the U.S. Coast Pilot.

U.S. Mandatory Ship Reporting System (WHALESSOUTH)

The U.S. Coast Guard will commence operation of the mandatory ship reporting (MSR) system (**WHALESSOUTH**) from November 15 to April 15, in conjunction with the northern right whale calving season. All vessels, 300 gross tons or greater, shall report to the Coast Guard prior to entering the southeast reporting area. Reports are required during a single voyage (that is, a voyage in which a ship is in the area to visit one or more ports or traverse the area enroute to a port outside the reporting area). Ships are not required to report when leaving port or when exiting the system. Ships submitting reports will receive a reply message via INMARSAT C containing the most recent Right Whale sighting information, along with recommendations for avoiding collisions with Right Whales. The MSR system was adopted by International Maritime Organization (IMO) Resolution A. 858(20) in accordance with the International Convention for the Safety of Life at Sea 1974 (SOLAS 74). Sovereign immune vessels are exempt from the requirement to report, but are encouraged to participate. No commercially sensitive information is being requested.

REPORTING AREA

- a. **WHALESSOUTH:** The geographical boundaries of the southeast reporting system include coastal waters within about 25 nautical miles along a 90 nautical mile stretch of the Atlantic seaboard in Florida and Georgia. The area extends from the shoreline east to longitude 80°51.60'W with the southern and northern boundaries at latitude 30°00.00'N and 31°27.00'N, respectively. NOAA Chart No. 11009.

REPORTING METHOD

- a. Vessels are required to report specific ship information to the Coast Guard upon entry into the reporting area. Direct reports should be made via INMARSAT C to one of the below addresses.
E-mail: RightWhale.MSR@noaa.gov or Telex: 236737831
- b. Vessels not equipped with INMARSAT C should report directly to one of the below addresses via alternate satellite communications equipment.
E-mail: RightWhale.MSR@noaa.gov or Telex: 236737831
- c. Vessels unable to use satellite communications equipment should contact the U.S. Coast Guard Communication Area Master Station, Chesapeake, VA via SITOR/NBDP on 8426.3 kHz, 12590.8 kHz, 16817.8 kHz twenty four hours per day, or 6314.3 kHz from 2300 GMT until 1100 GMT and 22387.8 kHz from 1100 GMT until 2300 GMT.
- d. Vessels unable to use satellite communications or SITOR/NBDP should contact the U.S. Coast Guard Communication Area Master Station, Chesapeake, VA via published voice frequencies.

REPORTING INSTRUCTIONS

- a. Vessels shall report the following information in accordance with the IMO format in Resolution A. 648(16) General Principles for Ship Reporting Systems and Ship Reporting Requirements.

Paragraph	Function	Information Required
System name	System identifier	WHALESSOUTH.
M	INMARSAT number	Vessel INMARSAT number.

A	Ship	Vessel name and call sign.
B	Date, time, and month of report	Six digit group giving day of month and time, single letter indicating time zone, and three letters indicating month.
E	True course	3-digit number indicating true course.
F	Speed in knots and tenths	3-digit group indicating knots and tenths.
H	Date, time, and point of entry into system	Date and time expressed as in (B) and latitude and longitude expressed as a four digit group giving latitude, the letter N indicating north, followed by a /, a five digit group giving longitude, and the letter W indicating west.
I	Destination and ETA	Name of port and arrival time expressed as in (B).
L	Route information	Route information should be reported as either a direct rhumbline to port (RL) and intended speed expressed as in (F), or a series of way points (WP). Vessels reporting waypoints should include latitude and longitude, expressed as in (H), and intended speed between waypoints. For vessels transiting within a traffic separation scheme (TSS), give only the waypoints and intended speed for entry and departure of TSS.

- b. Reports shall follow the prescribed format shown below. Reports should be sent as a direct email to RightWhale.MSR@noaa.gov or telex to **236737831**. Use of batch message routing services may delay receipt of a report. Proper format is required to ensure receipt of reply message. Including extra information, extra characters, or double spacing may result in failure of the system to send a reply message:
- c. Example report for WHALESSOUTH:

```

WHALESSOUTH//
M/412345678//
A/BEAGLE/NVES//
B/270810Z MAR//
E/250//
F/17.0//
H/270810Z MAR/3030N/08052W//
I/MAYPORT/271215Z MAR//
L/RL/17.0//

```

SUBJ: REBROADCAST OF SPECIAL WARNING 123.
UNCLASSIFIED//
MSGID/GENADMIN/NGA NAVSAFETY BETHESDA MD//
RMKS/

SPECIAL WARNING NUMBER 123. SOMALI.

1. DUE TO CONTINUING CONDITIONS OF ARMED CONFLICT AND LAWLESSNESS IN SOMALIA AND WATERS OFF ITS COAST, MARINERS ARE ADVISED TO AVOID THE PORT OF MUQDISHO (MOGADISHU) AND TO REMAIN AT LEAST 200 NAUTICAL MILES DISTANT FROM THE SOMALI COAST. THE U.S. GOVERNMENT DOES NOT HAVE AN EMBASSY IN SOMALIA AND CANNOT PROVIDE SERVICES TO US CITIZENS.
2. RECENT VESSEL HIJACKINGS OFF THE EAST COAST OF SOMALIA DEMONSTRATE THAT PIRATES ARE ABLE TO CONDUCT AT SEA HIJACKINGS FROM AS FAR SOUTH AS KISMAAYO (CHISIMAYU) (00-22S), THOUGH VESSELS ARE ADVISED TO TRANSIT NO CLOSER THAN 02-00S, TO AS FAR NORTH AS EYL (08-00N), AND OUT TO A DISTANCE OF 170 MILES. THE FIRST KNOWN ATTEMPT TO HIJACK A CRUISE VESSEL OCCURRED IN NOVEMBER 2005. ALL MERCHANT VESSELS TRANSITING THE COAST OF SOMALIA, NO MATTER HOW FAR OFFSHORE, SHOULD INCREASE ANTI-PIRACY PRECAUTIONS AND MAINTAIN A HEIGHTENED STATE OF VIGILANCE. PIRATES ARE REPORTED TO HAVE USED PREVIOUSLY HIJACKED SHIPS AS BASES FOR FURTHER ATTACKS.
3. ANOTHER REPORTED PIRATE TACTIC HAS BEEN TO ISSUE A FALSE DISTRESS CALL TO LURE A SHIP CLOSE INSHORE. THEREFORE, CAUTION SHOULD BE TAKEN WHEN RESPONDING TO DISTRESS CALLS KEEPING IN MIND IT MAY BE TAKEN WHEN RESPONDING TO DISTRESS CALLS KEEPING IN MIND IT MAY BE A TACTIC TO LURE A VESSEL INTO A TRAP.
4. VICTIMIZED VESSELS HAVE REPORTED TWO TO THREE (2-3) SPEEDBOATS MEASURING SIX TO NINE METERS (6-9M) IN LENGTH. EACH VESSEL HAS A CREW OF THREE TO SIX (3-6) ARMED MEN WITH AK-47S AND SHOULDER LAUNCHED ROCKETS, WHICH ARE OPENING FIRE ON VESSELS IN BROAD DAYLIGHT IN ORDER TO INTIMIDATE THEM INTO STOPPING.
5. TO DATE, VESSELS THAT INCREASE SPEED AND TAKE EVASIVE MANEUVERS AVOID BOARDING WHILE THOSE THAT SLOW DOWN ARE BOARDED, TAKEN TO THE SOMALI COASTLINE, AND RELEASED AFTER SUCCESSFUL RANSOM PAYMENT, OFTEN AFTER PROTRACTED NEGOTIATIONS OF AS MUCH AS 11 WEEKS.
6. CANCEL SPECIAL WARNING NUMBER 111.//

#5827

BT

NNNN

OPERATION "ON GUARD"

U. S. Coast Guard Marine Safety Office Miami announces Operation "ON GUARD". This operation is designed to employ Coast Guard - active duty, reserve and auxiliary, Federal Bureau of Investigation, US Customs Service, US Immigration and Naturalization Service and the Florida Department of Law Enforcement personnel in response to suspected terrorist activity at the waterfront facilities of the United States. South Florida is extremely vulnerable because it is the terminus of illegal alien and narcotics smuggling routes from the Bahamas, the Caribbean and South America. These routes are well established and are readily available for use by terrorist organizations. An urgent need existed to make the American Public equal partners in the fight on terrorism. Operation "ON GUARD" creates an effective deterrent measure that employs the eyes and ears of the marine industry and the boating public, people that know every inch of the coastline because it is where they work and play. Potential terrorists are put on notice that their activities will be seen and reported.

Operation "ON GUARD" takes a two pronged approach consisting of face to face visits by Coast Guard, FBI, USCS, INS and FDLE personnel combined with a coordinated joint agency media campaign to reach Marina Operators, Marine Dealers, Bridge Tenders, Commercial Fishermen, and the Boating Public. This operation relies on Coast Guard Auxiliary programs already in place like the "Clean Marina" program, Vessel Safety Checks, Marine Dealer Visits and the Commercial Fishing Vessel Safety Program to reach their normal customers, the waterfront users. The public is provided with the toll free number (1.800.424.8802) for reporting suspected terrorist activity to the National Response Center and the 1.800.BE ALERT number for US Customs along with a list of reporting criteria.

Report:

- Suspicious persons conducting unusual activities
- Individuals establishing businesses or roadside food stands in proximity to marina or bridge
- Unknown persons photographing or creating diagrams
- Unknown or suspicious persons loitering for extended periods of time
- Unknown or suspicious persons renting watercraft
- Suspicious vendors attempting to sell/deliver merchandise or drop off packages

For additional information contact: LCDR Armin Cate (305) 535-8735

D. DREDGING AND MARINE CONSTRUCTION OPERATIONS

Location	Type of Work	EST Comp Date	Dredge	Ref LNM
Bahamas	Above Water Cable Ops	UNK	UNKNOWN	10/03
SC-Beaufort	Marine Construction	MAY07	CAPTAIN HARRINGTON	46/06
SC-Charleston Harbor-Cooper River	Marine Construction Ops	UNK	Tug LAURA	38/02
SC-Cooper River	Drilling Ops	UNK	Spud Barges	04/02
SC-Hilton Head	Beach Renourishment	DEC06	ILLINOIS	35/96
GA-Cumberland Sound	Dredging Ops	UNK	UNKNOWN	26/03
FL-Jacksonville Harbor	Dredging Ops	SEP07	ACOE	35/06
FL-Jupiter Island	Dredging Ops	FEB07	LIBERTY ISLAND/DODGE ISLAND	43/06
FL-Jupiter Inlet-North/South Jetty	Marine Construction	FEB07	Shoreline Foundation, Inc.	44/06
FL-Miami River	Dredging Ops	DEC06	BEAN 7	40/04
FL-Miami River/27 TH Avenue-Salinity Dam	Dredging Ops	2006	BARREDOR DEL RIO	20/05
FL-Tampa Bay-Sparkman Channel	Dredging Ops	MAR07	Misener Marine Construction Inc	45/05
FL-Tampa Bay-Egmont Channel/Mullet Key	Dredging Ops	DEC06	EAGLE 1	31/06-46/06
FL-Boca Grande Pass	Dredging Ops	DEC06	BEACHBUILDER	41/06
FL-Caxambas Pass	Dredging Ops	JAN07	MISTER O	42/06

E. SHOALING AND HAZARDOUS SITUATIONS

Location	Waterway	Significant Information	Chart	Ref LNM
SC	Seacoast	Charleston Harbor Ocean Dredged Material Disposal Site (ODMDS) higher than charted depths, minimum depth may be 18 feet.	11521	09-01
SC	Murrells Inlet	Shoaling continues to be reported between Murrells Inlet Buoy 4 (LLNR 1775) and Murrells Inlet Buoy 9 (LLNR 1795.5)	11534	10-06 37-06
SC	Murrells Inlet	Shoaling has been reported in the vicinity of Murrells Inlet Buoy 25 (LLNR 1850)	11534	31-06
SC	Little River Inlet	A 47 ft tug sank in approx position 33-50.1N 078-32.8W and is marked with a lighted buoy	11535	29-03
SC	Winyah Bay	Shoaling has been reported in position 33-13-00N 079-11-50W in the vicinity of Georgetown Lighthouse (LLNR 20) the depth of the water was reported at 27 feet.	11535	50-01
SC	Folly River	Shoaling has been observed between Folly River Buoy 14A (LLNR 3750.6) and Folly River Buoy 19 (LLNR 3750.7)	11522	19-04
SC	Shem Creek	Shoaling in the vicinity of SHEM CREEK RANGE LIGHT 16 (LLNR 3555)	11524	29-03
SC	Charleston Hbr	SHEM CREEK RANGE FRONT LIGHT (LLNR 3560) is not properly marking the center of the channel and has been changed to a quick flashing green light (QG) and is displaying square green (SG) dayboards.	11524	44-02
SC	Charleston Hbr	Severe shoaling in center of channel datum at depth of 5.5 MLW between Mt. Pleasant Channel DB 1 (LLNR 3510) and Mt. Pleasant Channel DB 2 (LLNR 3515).	11523	31-03
SC	Cooper River	A midstream transfer facility is conducting continued operations in the vicinity of Naval Weapons Station near the TC dock. Operations are outside the marked navigation channel and should not impede navigation.	11524	36-03
SC	Cooper River	Concrete and rock reported at the 40 foot depth on both sides of the navigation channel adjacent to the manmade islands directly under the I-526 Bridge.	11524	49-02
SC	Cooper River	A conveyor extends approx 20 ft into Town Creek beneath Cooper River bridges.	11524	13-02
SC	Stono Inlet	Shoaling to 7 feet at MLLW between Stono Inlet Channel Buoy 3 (LLNR 3710) and Buoy 4 (LLNR 3715).	11522	31-03
SC	Folly River	Obstruction (steel H beam) reported 50-70 yds outside marked channel and outheast of FOLLY RIVER LB 2 (LLNR 3735) at low tide	11522	06-02
SC	Folly River	Shoaling to 5 ft at MLW reported in the Folly River from Folly River LB 2 (LLNR 3735) to Folly River LB 7 (LLNR 3740) and to 5 ft at MLW from Folly River Buoy 18 (LLNR 3755 to Folly River Buoy 19 (LLNR 3760) within the confines of the marked channel.	11522	06-03
SC	Beaufort River	A 10"x10"x10" beam with pilings reported snagged on a private dock between Stono River DBN 57A (LLNR 34800) on the Stono River.	11518	06-02
SC	Beaufort River	Continued shoaling to depths of 6.5 feet in the vicinity from WHITE POINT LT 110 (LLNR 34945) through Dawho River Buoy113 (LLNR 34960)	11518	30-01
SC	Cooper River	Submerged Obstruction reported in the vicinity of the Cooper River Bridge in approximate position 32-48-12.600N 079-55-03.400W	11524	10-01
SC	Cooper River	Shoaling to depths of 8 feet above charted datum reported in the vicinity of Cooper River Range "D" at the Naval Weapons Station.	11524	19-01
SC-ICW	Ashepoo Riv	Shoaling has been reported between Fenwick Cut Daybeacon 161A (LLNR 35140.5) And Ashepoo River LT 164 (LLNR 35145). Water depth reported 5 feet at low tide.	11518	17-04
SC-ICW	Little River	Little River Swing Bridge is missing a section of the dolphin fendering system.	11534	40-02
SC-ICW	Winyah Bay	Shoaling has been reported along Range E, Entrance Channel to Georgetown, SC	11534	06-06
SC-ICW	Winyah Bay	Shoaling has been reported between Winyah Bay-Charleston Harbor Daybeacon 37 (LLNR 34240) and Winyah Bay-Charleston Harbor Daybeacon 38 (LLNR 34240)	11518	51-03
SC-ICW	Brickyard Creek	A new shoal extends out of channel on green side between Brickyard Creek Daybeacon 209 (LLNR 35325) and Brickyard Creek Daybeacon 211(LLNR 35335). Water depth at low tide is reported at 2.6 feet.	11507	17-04
SC-ICW		Severe reported shoaling between Hell's Gate Daybeacon 89 (LLNR 36279) and Hell's Gate Light 92 (LLNR 36290).	11507	17-06
SC-ICW	Port Royal Sound	Severe shoaling has been reported in various located in the ICW between Port Royal Sound, SC and Fernandina, FL. (See LNM 31/05 for Channel Conditions).		31-05
GA-ICW	Vernon River	Shoaling has been reported in the middle of channel from Raccoon Key LB 78 (LLNR 36265) and Hells gate LT 91 (LLNR 36285)	11507	17-04
GA	St Catherinres Snd	Shoaling reported in vicinity of St Catherines Snd LB 2 (LLNR 5795)	11511	33-06
GA	Darien River	Shoaling has been reported between Darien River Buoy 12 (LLNR 36826.3) and Darien River Buoy 14 (LLNR 36826.4). Water depth reported 5 feet low tide.	11507	06-04
GA	Beaufort River	Shoaling as been observed between Little Mud river LT 190 (LLNR 36865) and Little Mud River (LLNR 36870). Water depth reported 9 feet at low tide.	11510	35-00
GA	Doboy Sound	Shoal 500 yards WNW of DOBOY SOUND LT 8 (LLNR 5945).	11510	35-00
GA	Mackay River	Piling marked by white strobe light is protruding one foot above waterline in center of channel	11510	17-02
GA	Altamaha Sound	Shoal between ALTAMAHA SOUND LT 2 (LLNR 5950) & LT 5 (LLNR 5965)	11508	06-00
GA	Hampton River	Shoaling reported between Hampton River Daybeacon 15 (LLNR 5985) and Hampton River Daybeacon 17 (LLNR 5990).	11508	23-04
GA-ICW	St Simons Sound	Shoaling reported in vicinity of Tolomato River LB 60 (LLNR 38910). Relocated buoy to mark best water.	11485	39-06

GA	St Andrew Sound	Shoaling reported in vicinity of St Andrew Sound Buoy 2 (LLNR 6410). Depth reported 4 feet.	11508 23-04
GA	Jekyll Creek	Shoaling to a depth of 7 feet at the centerline has been reported throughout Jekyll Creek	11489 31-01
GA ICW	Savannah River	Shoaling reported in the area between Elba Island Cut LT 2 (LLNR 35880) and Elba Island Cut LT 4 (LLNR 35885), Soundings shows the depth between two and four feet, approx 20 yards into the channel between the aids.	11507 01-05
GA ICW	Jekyll Creek	Shoaling has been observed between Jekyll Creek LT 20 (LLNR 37345) and Jekyll Creek LT 20A (LLNR 37346). Water depth reported 5 feet at low tide.	11489 06-04
FL East Coast	Amelia River	Extensive shoaling reported in the vicinity of South Amelia River DBN 34 (LLNR 38100)	11489 34-01
FL East Coast	Amelia Island	An unlit pier extends into the South Amelia River at LIGHT 29 (LLNR 38080) in approx position 30-35-09N 081-27-18W	11489 04-03
FL East Coast	St Johns River	Shoaling has been reported in the channel south of Mt Royal Light 63 (LLNR 8510) to Fort Gates Light 65 (LLNR 8520). Depth reported at low water is 4 feet.	11495 24-06
FL East Coast	Ortega River	Submerged pilings on west bank of upper Ortega River extending out approx 150 ft.	11492 17-02
FL East Coast	St. Augustine	5 foot in diameter unlighted buoy anchored in 27-38-20N 080-13-15W.	11474 04-01
FL East Coast	St Lucie Inlet	St Lucie River (North Fork) DBN 2 (LLNR 50845), previously reported as destroyed, has been marked with a temporary red lighted buoy "2WR" with a Q W flash characteristic in position 27-12-08.940N, 080-15-45.585W, in 10 feet of water. A single concrete pile remains on scene, approximately 3 feet below the surface at low tide.	11428 06-03
FL East Coast	Lake George	Obstructions reported 100 yards west and 100 yds NW of Lake George South End Range Front Light (LLNR 8775).	11495 05-03
FL East Coast	Halifax River	Shoaling to an unknown depth has been reported in the vicinity of Halifax River Daybeacon 68 (LLNR 40470) and Halifax River Daybeacon 70 (LLNR 40480).	11485 19-01
FL East Coast	Halifax River	The shoaling is reported to extend 40 yards from the west bank of the channel. Shoaling to a depth of 3 feet in the vicinity of Halifax River DBN 30 (LLNR 40000) Increasing to a depth of 8 feet, 20 yards to the east of the DBN	11485 28-01
FL East Coast	Matanzas Coast	66 F/V sunk in position 29-03-09N 080-52-06W.	11484 43-00
FL East Coast	Matanzas River	Shoaling reported in Mantanzas River, north of Mantanzas bridge on west side of channel Approx 20 feet into channel.	11485 09-05
FL East Coast	Matanzas River	Shoaling reported with soundings of 9 feet at low tide trying to close itself in between <u>MATANZAS RIVER LIGHT 1</u> (LLNR 39035) and Matanzas River B 2 (LLNR 39040).	11485 37-03
FL East Coast	Matanzas River	Shoaling constant near Matanzas River B 2 (LLNR 39040), and Tolomato River B 60 (LLNR 38910). Dredging operations continuous.	11485 31-00
FL East Coast	Matanzas River	Shoaling has been reported in the vicinity Matanzas River DBN 3 (LLNR 18090) Reported depths are 9.3 feet approx 300 feet WNW of DBN.	11427 29-01
FL East Coast	Matanzas River	Shoaling has been reported in the vicinity Matanzas River DBN 4A (LLNR 18100) And DBN 4B (LLNR 18105), approx 20 yds into channel	11427 42-01
FL East Coast	Matanzas River	Shoaling has been reported in the vicinity Matanzas River Buoy 81A (LLNR 39535) in approximate position 29-43-05N 081-14-45W. Shoaling to depths of 3 to 4 feet has been reported in the marked channel.	11485 07-01
FL East Coast	Ponce de Leon	Shoaling has been reported in the vicinity of Ponce de Leon Inlet. The following temporary buoys have been established to mark best water. Ponce de Leon Inlet Buoys 5A, 7A, and 10A.	11485 09-06
FL East Coast	Sebastian Inlet	A 207ft coastal freighter sank in approx position 26-0610N 080-01-15W.	11451 24-03
FL East Coast	Kissimmee River	A Submerged piling has been reported in position 28-13-00.00N 081-23-00.000W in Lake Tohopekaliga, Osceola County, FL.	XXXX 35-04
FL East Coast	ST Lucie Inlet	Shoaling reported in the vicinity of St Lucie Inlet Buoy 4 (LLNR 10000), - Buoy 5 (LLNR 10125) - Buoy 6 (LLNR 10130) and - Buoy 7 (LLNR 10125)	11472 12-06
FL East Coast	St Lucie Inlet	Shoaling found in St. Lucie Inlet between Daybeacon 14 (LLNR 10160) and 16 (LLNR 10165) has been marked with a red temporary buoy 14A in position 27-09-54N 080-10-17.955W	11428 05-03
FL East Coast	Stuart	A tug and barge have sunk on east side of north/south jetty of St. Lucie Inlet. in approximate location 27-10-06N 080-08-58W.	11472 50-02
FL East Coast	Jupiter Inlet	An unlit mooring ball with letters "PBSC" in approx position 26-42.12N 080-01.54W	11466 29-03
FL East Coast	Singer Island	Shoaling has been reported in the vicinity of Singer Island Daybeacon 1 (LLNR 10211) A temporary unlighted buoy has been placed in AP 26-46-28.544N 080-02-24.413W	11472 08-06
FL East Coast	Lake Worth Inlet	Shoaling has been reported in Lake Worth Inlet in approximately position 26-46-21.064N 080-01-46.260W.	11472 39-02
FL East Coast	Boca Raton Inlet	Report of 5 ft steel mooring buoy anchored approx 220 yds southeast of Boca Inlet.	11467 17-02
FL East Coast	Boca Raton Inlet	Severe shoaling reported at the entrance to Boca Raton inlet.	11466 20-05
FL East Coast	Malloy Channel	Report of 80-100 ft black pipe obstructing channel 100 yds north of Miami Yacht Club	11467 21-02
FL East Coast	Miami River	Shoaling to an unknown depth has been reported NW of the 5th Street Bridge.	11467 11-01
FL East Coast	Biscayne Bay	Shoaling reported between Biscayne Bay Daybeacon 6A (LLNR 47820) and Biscayne Bay Daybeacon 9 (LLNR 47835).	11467 51-01
FL West Coast	Collier Bay	Dredge Pile reported near entrance to Collier Bay.	11431 20-05
FL West Coast	Capri Pass	Shoaling has been reported in vicinity of Capri Pass Light 2 (LLNR 16945) and between Capri Pass Light 3 (LLNR 16955) and Capri Pass Light 4 (LLNR 16960).	11430 24-05
FL West Coast	Lake Okeechobee	A palm tree was reported obstructing the channel 200 yards south of Lake Okeechobee (Rt2) DBN (LLNR 51550).	11428 45-02
FL West Coast	South Seas	Shoaling between South Seas Plantation Daybeacon 5 (LLNR 55730 Plantation and South	11427 12-01

FL West Coast	Fort Myers	Seas Plantation Daybeacon 21 (LLNR 55880).	11427 50-02
FL West Coast	Matanzas Pass	A partially submerged piling only visible at low tide approximately 5 ft away from Cape Coral Rim Channel DBN 65 (LLNR 53190) located in 26-33-49.773N 081-55-59.117W.	11427 03-03
FL West Coast	New Pass	Shoaling at Matanzas Pass DBN 3 (LLNR 18090) extending to – LIGHT 7 (LLNR 18120)	11425 36-05
FL West Coast	Venice Inlet	Extensive shoaling exist from New Pass LT NP (LLNR 1345/21585 to New Pass Channel LT 7 (LLNR 21620), water depths are constantly changing and surf breaking.	11425 31-00
FL West Coast	Cortez Bay	Shoaling reported to 8 feet between VENICE INL-SIESTA KEY LT 3 (LLNR 57840) and – LT 5 (LLNR 57860).	11425 03-03
FL West Coast	Siesta Key-TB	Shoaling reported encroaching into the channel in the vicinity of Siesta Key-Tampa Bay Buoy 39 (LLNR 59345).	11425 07-06
FL West Coast	Charlotte Harbor	Shoaling reported in vicinity of Siesta Key-Tampa Bay Buoy 43. Shoaling extends Channel ward approximate 15yds. A depth of 5 Feet has been reported at mean-low water.	11425 31-06
FL West Coast	Tampa Bay	Severe shoaling has been reported in the vicinity of Charlotte Harbor Buoy 3A (LLNR 19915)	11425 44-01
FL West Coast	Tampa Bay	Shoaling reported in position 27-27.55.800N 082-41-30.137W, 145 yards from Siesta Key-Tampa Bay DBN 49 (LLNR 59570).	11425 41-02
FL West Coast	Tampa Bay	Shoaling reported in position 26-48.677N 082-15.825W between Gasparilla Snd DBN 1 (LLNR 21420) and Gasparilla Sound DBN 3 (LLNR 21425).	11425 40-04
FL West Coast	Tampa Bay	Shoaling reported between New Pass Buoy 3A (LLNR 21595) and New Pass Light (LLNR 21620), extending 20 yards channel ward.	11416 05-02
FL West Coast	Boca Ciega Bay	Shoaling in vicinity of Sunshine Skyway Channel between DBN 2 (LLNR 60320), and Sunshine Skyway Channel DBN 3 (LLNR 60325). Also in vicinity of Sunshine Skyway Channel near DBN 2 (LLNR 60320). At low tide, best-marked water depth is only 4.5 ft.	11411 03-03
FL West Coast	Pass-A-Grille	No Wake sign reported destroyed 100 yards south of Pinellas BaywayStructure “C” Bridge located below the waterline in approximate position 27-42.5N, 82-43.3W.	11411 24-03
FL West Coast	Tampa Bay	Partially submerged piling reported 50 yds off east side of Mud Key in north Pass-A-Grille.	11412 52-05
FL West Coast	Tampa Bay	195FT sunken barge approximately 11NM NW of Egmont Key	11409 20-06
FL West Coast	New Port Richey	Shoaling reported in the vicinity of Pithlachascotee River Light 16 (LLNR 26585)	11411 52-05
FL West Coast	Tampa Bay	Sunken 50FT fishing vessel approximately 312 degrees T at 2,700 yards from Cotee River Light 1 (LLNR 26505) Charts: 11409 and 11411.	11411 07-06
FL West Coast	Tampa Bay	Report of shoaling encroaching southward from Anclote Key past Anclote Anchorage South Entrance Daybeacon 3X. Depth less than published depth of 9 feet	11416 30-02
FL Okeechobee	Route 1	A submerged 15 foot plastic piling reported approximately 80 yards bearing 225 degrees from Tampa Bay Cut F Channel Lighted Buoy 10F (LLNR 22845).	11428 46-00
SC AICW	Winyah Bay	Obstruction/Shoaling in vicinity DBN 4 (LLNR 51200)	11534 31-00
SC AICW	Elliott Cut	Shoaling near (STM 363), 1.0 miles N (Town Creek) in McClellanville, SC.	11522 31-00
SC AICW	Dawho River	Shoaling between Stono Riv DBN 19 (LLNR 3845) at the intersection of Elliott Cut.	11518 17-01
SC AICW	Little River	Continued shoaling to less than 6.5 feet in the Dawho River, near (STM 497).	11518 31-00
SC AICW	Ashepoo River	Encroaching 9 foot Shoal extends 20 yards into the channel from LT 110 through B 113.	11518 31-00
SC AICW	Ashepoo River	Shoaling near (STM 363), 1.0 miles N of Little Riv-Winyah Bay DBN 24B (LLNR 33725.5).	11518 18-01
SC AICW	Winyah Bay	Heavy shoaling near (STM 511) FENWICK CUT LT 162 (LLNR 35140).	11518 31-00
SC	AICW	Shoaling between Ashepoo/Coosaw Cutoff Temporary Buoys 184A & - B 185 And starting in the channel near Ashepoo/Coosaw Cutoff Light 184	11518 31-00
SC	AICW	Shoaling near Winyah Bay-Charleston Harbor DBN 118 (LLNR 34515), and DBN 119 (LLNR 34520) (STM 511) to 8.5 feet.	11518 02-01
SC	AICW	Shoaling to a depth of 8 feet has been reported in the vicinity of Winyah Bay-Charleston Harbor Daybeacon 37 (LLNR 34240).	11534 02-01
FL AICW	St Johns River	Shoaling has been reported in the vicinity of Little River-Winyah Bay DBN 22A (LLNR 33710.5), the following temporary Buoys have been established to mark the shoal; Little River-Winyah Bay B 24A (LLNR None) Little River-Winyah Bay B 24B (LLNR None) and Little River-Winyah Bay DBN 25 (LLNR 33735) in approximate position 33-44.1N 078-52.9W.	11489 06-04
FL AICW	Matanzas River	Shoaling has been observed between Gunnison Cut DBN 73 (LLNR 38270) and Sister Creek (LLNR 38300). Water depth reported 7 feet.	11485 09-05
FL AICW	Matanzas Inlet	Shoaling has been reported north of Matanzas River Bridge, west side. Depth of 5 feet reported in position 29-33-45.571N 081-11-06.481W	11485 10-06
FL AICW	Mantanzas Inlet	Shoaling has been reported in the vicinity of Matanzas River Buoy 80A (LLNR 39525.5) to a depth of 4 feet at low tide.	11485 20-06
FL AICW	Ponce de Leon Cut	Shoaling has been reported in the vicinity of Mantanzas River Buoy 81A (LLNR 39535) in Position 29-43-10.198N 081-14-44.717W	11485 10-06
FL AICW	Tolomato River	Shoaling has been reported in the vicinity of Ponce de Leon Cut Junction DBN (40615) to Ponce de Leon Cut DBN 18 (LLNR 40610). Water depth in marked channel is 6 feet at low tide.	11489 31-01
FL AICW	Indian River (SS)	USACE survey has reported shoaling from PABLO CREEK LT 46 (LLNR 38610) to TOLOMATO RIVER LT 3 (LLNR 38625).	11472 16-06
FL AICW	Indian River (SS)	Shoaling reported between Indian River (SS) Daybeacon 128 (LLNR 44135) and –Daybeacon 130 (LLNR 44145).	11485 31-00
FL AICW	Ponce de Leon	Shoaling exist across entire channel between Indian River (SS) Daybeacon 184 (LLNR 45085) and Daybeacon 186 (LLNR 45110). Reported depths of 5 feet at low tide.	11485 31-00
FL AICW	Ponce de Leon	Shoaling between Ponce de Leon Cut DBN 2 (LLNR 40500) and DBN 3 (LLNR 40505).	11485 10-06
FL AICW	Ponce de Leon	Ponce de Leon Cut Daybeacon 6 (LLNR 40530) relocated due to shoaling.	

FL AICW	Boynton Inlet	Heavy shoaling near Lake Worth DBN 46 (LLNR 47015).	11467 31-00
FL-AICW	Hillsboro Inlet	Shoaling has reported in Ocean Park Channel between Daybeacon 1 (LLNR 47040) and Daybeacon 8 (LLNR 47075).	11467 08-06
FL-AICW	Lake Worth inlet	Shoaling has been reported along the north side of Entrance Channel	11474 35-04
FL-AICW	Bakers Haulover	Extensive shoaling has been reported in between Biscayne Bay Daybeacon 6 (LLNR 47815) and Biscayne Bay Daybeacon 11 (LLNR 47840)	11467 50-04
FL AICW-	Biscayne Bay	The slow speed sign 50 yds south of the east span of Venetian Causeway is damaged and partially submerged.	11468 32-03
FL AICW	Venice Inlet	Shoaling 600 yards North and 200 yards South of the Albee Bridge.	11425 31-00
PR	Vieques Snd Culebra	A submerged offshore mariculture site has been established 2 miles southeast of Culebra Island and is outlined by coordinates 18-16.67N 065-20W, 18-16.4N 065-19.72W	25650 32-02

A. BRIDGE CONSTRUCTION/REPAIR

Location	Type of Work	EST Comp Date	Bridge	Ref LNM
SC-Charleston Hbr-Cooper Riv	Bridge Construction	NOV 07	Grace Memorial Bridge	48-02
SC-Charleston Hbr-Cooper Riv-Town Cr	Bridge Construction	NOV 07	Silas N. Pearman Bridge	48-02/34-06
SC-Charleston Hbr-Cooper Riv Bridges	Demolition	NOV 07	Grace Memorial/Pearman	34-05/34-06
SC-Cooper Riv- Santee Diversion Canal 1	Demolition	JAN 07	ST HWY 45	49-06
GA-Turtle Riv/Gibson Cr	Bridge Construction	OCT 09	I-95 Bridges	49-06
FL-St. Johns Riv-Jacksonville	Demolition	JAN 07	Fuller Warren Bridge	47-06
FL-St. Johns Riv-Trout Riv	Bridge Construction	MAR 08	I-95 Bridge	12-05
FL-St. Johns Riv-Ortega Riv	Bridge Repairs	JAN 07	Ortega Riv Drawbridge	35-06/38-06
FL-St. Johns Riv-Ortega Riv	Bridge Repairs	JAN 07	Ortega Riv Bridge	35-06/38-06
FL-ICW-Jacksonville Bch	Bridge Construction	FEB 09	McCormick (Beach Blvd)	34-06
FL-ICW-St. Augustine	Bridge Construction	JAN 07	Bridge of Lions Bridge	08-05/21-05
FL-ICW-Indian Riv-Pineda	Bridge Repairs	APR 07	Pineda Cswy Bridge A	34-06
FL-ICW-Banana Riv-Sykes Cr	Bridge Repairs	APR 07	SR 528	47-06
FL-ICW-Indian Riv (S Sec)	Bridge Demolition	DEC 06	Ernest F. Lyons Bridge	34-06/42-06
FL-ICW-W Palm Bch	Bridge Repairs	MAR 07	PGA Blvd Bridge	23-05
FL-ICW-Hollywood	Bridge Repairs	JUL 07	Hollywood Blvd Bridge	15-06/34-06
FL-ICW-Biscayne Bay-Indian Ck	Bridge Repairs	DEC 06	E 79 th St Cswy Bridge	34-06/40-06
FL-ICW-Biscayne Bay-Indian Ck	Bridge Repairs	JAN 07	E 63 rd St Bridge	27-06/34-06
FL-ICW-Biscayne Bay-Indian Ck Canal	Bridge Repairs	MAR 07	W 63 rd St Fixed Bridge	36-06
FL-OWW-Calosahatchee Riv	Bridge Repairs	DEC 06	Cape Coral Bridge	38-06
FL-ICW-Okeechobee-Sanibel	Bridge Construction	JAN 07	Sanibel Cswy Bridge	27-05
FL-Anna Maria Sound-Bimini Bay	Bridge Construction	APR 07	Key Royale Dr Bridge	23-06
FL-Johns Pass	Bridge Construction	JAN 09	Johns Pass Bridge	07-06/08-06

B. DRAWBRIDGE STATUS SUMMARY

The following is a list of known drawbridge discrepancies, restrictions, and closures in navigable waters of the Seventh Coast Guard District. Additional information regarding bridges can be found in Volume 4 (Cape Henry to Key West) or volume 5 (Gulf of Mexico, Puerto Rico and Virgin Islands) of the U.S. Coast Pilot, 33 CFR 117, or by calling (305) 415-6743. Unless otherwise noted in the date column, the described status will be in effect until further notice. Mariners knowing of bridge activities not listed below are urged to notify the nearest Coast Guard unit.

BRIDGE	LOCATION	DATE	STATUS	REF
PGA	ICW, W Palm Bch, FL	Until Feb 28, 07	Single-leaf Ops	34-06/42-06
Hollywood Blvd	ICW, Hollywood, FL	Until Jul 27, 07	Single-leaf Ops	15-06/42-06
E 79 th St	Indian Cr, Miami, FL	Until Dec 15, 06	Closed to navigation	40-06/47-06
63 rd St	Indian Cr, Miami, FL	Until Jan 10, 07	Hourly Openings/Special Regs	27-06/39-06

C. BRIDGE INFORMATION.

SOUTH CAROLINA – CHARLESTON HARBOR – COOPER RIVER: Temporary Safety Zone.

The Coast Guard is establishing a temporary safety zone on the navigable waters of Hog Island Reach on the Cooper River, for the demolition and recovery operations of the Grace Memorial and Silas Pearman Bridges. This rule prohibits entry, anchoring, mooring, or transiting within the temporary safety zone without the permission of the Captain of the Port Charleston or his designated representative. This regulation is necessary to protect life and property on the navigable waters of the Cooper River from the danger associated with the demolition and recovery operations of these bridges. This rule is effective until 8:01 a.m. on December 31, 2006.

For further information contact Chief Warrant Officer James J. McHugh, Sector Charleston office of Waterways Management at 843-724-7647.

Ref: LNM 08 through 48-06 and Docket Number (COTP Charleston 06-003) Chart: 11524

SOUTH CAROLINA – COOPER RIVER – SANTEE DIVERSION CANAL 1 – STATE HIGHWAY 45 BRIDGE: Bridge Demolition.

The South Carolina Department of Transportation will begin demolition of the South Carolina State Highway 45 Bridge across the Santee Diversion Canal on December 14, 2006. During the demolition process the waterway may be closed for individual periods of approximately one hour for blasting and at other times local restrictions will be in place to reroute traffic around the demolition area. For additional information contact Coast Guard Sector Charleston. This work is expected to continue until January 8, 2007.

Ref: BNM 371-06-CHA

Chart: 11524

GEORGIA – ST SIMON SOUND – BRUNSWICK HARBOR AND TURTLE RIVER – Bridge Construction/Demolition.

The Georgia Department of Transportation advises that they will be removing portions of an existing bridge and widening both I-95 Bridges across Turtle River and Gibson Creek, Glynn County, Georgia. This work will continue until October, 2009.

Chart: 11506

GEORGIA – ST MARYS – CUMBERLAND SOUND: Survey Operations.

The Coast Guard Captain of the Port Jacksonville advises all mariners of intermittent survey operations on the navigable channel throughout Cumberland Sound from November 6, 2006 to December 13, 2006. Operations will not impact commercial traffic entering the Port of Fernandina. Marine traffic requiring full channel clearance should contact the Research Vessel R/V SAVANNAH on VHF-FM Channel 13 to make arrangement for safe passage.

Ref: LNM 45 through 48-06

Chart: 11502, 11503

FLORIDA – ST JOHNS RIVER – JACKSONVILLE – FULLER WARREN BRIDGE: Bridge Demolition.

The Captain of the Port Jacksonville advises all mariners that the navigable channel in the vicinity of the Old Fuller Warren Bridge will be periodically restricted for ongoing bridge demolition November 6th through December 9th, 2006. The navigable channel will be restricted to a 100 foot horizontal clearance from 7:00 a.m. to 5:30 p.m. during that time. Mariners requiring more than 100 foot horizontal clearance may request a full channel opening by contacting the Tug ST JOHNS and/or Tug BANTAM on VHF-FM channel 13, two hours in advance. All marine traffic should take caution when passing through this portion of the St. Johns River. This work is expected to continue until February 2007.

Additional channel restrictions will be published at a later date.

Ref: LNM 46 through 48-06

Chart: 11491

FLORIDA – LOSTMANS RIVER TO WIGGINS PASS– ROBERTS BAY – WINTERBERRY WATERWAY– MARCO ISLAND: Notice of Proposed Rulemaking.

The Coast Guard proposes to change the operating regulations of the Outer Clam Bay boardwalk bridge, mile 0.3, near North Naples in Collier County, Florida. This proposed rule would require the draw to open on signal, with at least 30 minutes advance notice. This proposed action will allow the unrestricted movement of pedestrian traffic while not unreasonably interfering with the movement of vessel traffic.

Comments and related material must reach the Coast Guard on or before January 16, 2007. You may mail comments and related material to Commander (dpb), Seventh Coast Guard District, 909 SE. 1st Avenue, Room 432, Miami, FL, 33131. FOR FURTHER INFORMATION CONTACT: Mr. Barry Dragon, Seventh Coast Guard District, Bridge Branch, at (305) 415-6743 or email Michael.b.lieberum@uscg.mil.

Ref: LNM 46 through 48-06
Chart: 11430

CG File: 3741

FLORIDA – ATLANTIC INTRACOASTAL WATERWAY – INDIAN RIVER – BANANA RIVER – SYKES CREEK – SR 528 BRIDGE: Bridge Repairs.

The SR 528 Bridge across Sykes Creek, Merritt Island, Brevard County, Florida is being repaired. The horizontal clearance has been reduced to 30 feet. This work will continue until April 15, 2007.

Ref: LNM 47 and 48-06

Chart: 11472

FLORIDA – ATLANTIC INTRACOASTAL WATERWAY – PALM SHORES TO WEST PALM BEACH – INDIAN RIVER (SOUTH SECTION) – ERNEST F. LYONS BRIDGE: Bridge Construction/Demolition.

The demolition of the Ernest F. Lyons (Ocean Boulevard) Bridge, Atlantic Intracoastal Waterway mile 984.9, Martin County, Florida is scheduled to begin on September 27, 2006 and will continue until December 30, 2006. During this time period there will be periodic waterway closures and marine traffic delays. Updates will be provided via future Broadcasts and Local Notice to Mariners.

Ref: LNM 34 through 48-06
Chart: 11472

CG File: 3839

FLORIDA – ATLANTIC INTRACOASTAL WATERWAY – LAKE WORTH INLET TO JUPITER INLET – PGA BOULEVARD BRIDGE: Bridge Repairs/Update.

The PGA Boulevard Bridge (SR 786), Intracoastal Waterway mile 1012.6, West Palm Beach, Florida is on single-leaf operations until February 28, 2007. A double-leaf opening is available on the hour and half-hour with a two hour notice to the bridge tender.

Ref: LNM 23 through 48-06 and BNM 276-05-MIA
Chart: 11467

CG File: 3132

FLORIDA – ATLANTIC INTRACOASTAL WATERWAY – WEST PALM BEACH TO MIAMI – NEW RIVER: Final Rule.

The Coast Guard is changing the operating regulation governing the operation of the SE. Third Avenue, Andrews Avenue and Marshal (Seventh Avenue) bridges across the New River, miles 1.4, 2.3, and 2.7 and the regulations governing the operation of the Davie Boulevard (SW. Twelfth Street) bridge across the New River, South Fork, mile 0.9, Fort Lauderdale, Broward County, Florida

DATES: This rule is effective December 8, 2006. FOR FURTHER INFORMATION CONTACT: Mr. Michael Lieberum, Project Manager, Seventh Coast Guard District, Bridge Branch, 305-415-6744.

Final Rule

Sec. 117.313 New River.

(a) The draw of the S.E. Third Avenue bridge, mile 1.4 at Fort Lauderdale shall open on signal; except that, from 7:30 a.m. to 9 a.m. and 4:30 p.m. to 6 p.m., Monday through Friday, except Federal holidays, the draw need not open. Public vessels of the United States, tugs with tows, and vessels in distress shall be passed at any time.

(b) The draw of the Andrews Avenue bridge, mile 2.3 at Fort Lauderdale, shall open on signal; except that, from 7:30 a.m. to 9 a.m. and 4:30 p.m. to 6 p.m., Monday through Friday, except Federal holidays, the draw need not open. The draw need not open for inbound vessels when the draw of the Florida East Coast Railroad bridge, mile 2.5 at Fort Lauderdale is in the closed position for the passage of a train. Public vessels of the United States, tugs with tows, and vessels in distress shall be passed at any time.

(c) The draw of the Marshal (Seventh Avenue) bridge, mile 2.7 at Fort Lauderdale shall open on signal; except that, from 7:30 a.m. to 9 a.m. and 4:30 p.m. to 6 p.m., Monday through Friday, except Federal holidays, the draw need not open. Public vessels of the United States, tugs with tows, and vessels in distress shall be passed at any time.

Sec. 117.315 New River, South Fork.

(a) The draw of the Davie Boulevard (SW. Twelfth Street) bridge, mile 0.9 at Fort Lauderdale shall open on signal; except that, from 7:30 a.m. to 9 a.m. and 4:30 p.m. to 6 p.m., Monday through Friday, except Federal holidays, the draw need not open. Public vessels of the United States, tugs with tows, and vessels in distress shall be passed at any time..

Ref: Public Notice 29-06, LNM 26, 47, 48-06 and Federal Register Docket #CGD07-06-019
Chart: 11467

FLORIDA – ATLANTIC INTRACOASTAL WATERWAY – WEST PALM BEACH TO MIAMI – HOLLYWOOD BOULEVARD BRIDGE: Bridge Construction.

The Hollywood Boulevard Bridge, Intracoastal Waterway mile 1072.2, Hollywood, Broward County, Florida will be on single-leaf operations on the hour and half-hour from April 17, 2006 to July 27, 2007, due to construction. A double-leaf opening will be available with a two-hour notice to the bridge tender. The horizontal clearance will be reduced to 50 feet during this time period.

LNM 15-06 through 48-06 and Federal Register Docket # CGD07-06-204
Chart: 11467 CG File: 2899

FLORIDA – ATLANTIC INTRACOASTAL WATERWAY – WEST PALM BEACH TO MIAMI – BISCAYNE BAY – INDIAN CREEK – EAST 79TH STREET CAUSEWAY BRIDGE: Bridge Repairs/Update.

The contractor repairing the East 79th Street Causeway Drawbridge across Indian Creek, Biscayne Bay, Miami, Miami-Dade County, Florida has advised the Coast Guard that they are unable to open the drawbridge through December 15, 2006.

Ref: LNM 26 through 48-06 Chart: 11467

FLORIDA – ATLANTIC INTRACOASTAL WATERWAY – WEST PALM BEACH TO MIAMI – BISCAYNE BAY – INDIAN CREEK – 63RD STREET BRIDGE: Bridge Repairs.

The 63rd Street Bridge, Indian Creek mile 4.0, Miami Beach, FL will open a single-leaf on the top of the hour from 8:00 am to 5:59 p.m. and a double-leaf on the top of the hour between 6:00 pm and 12:10 am until January 10, 2007. This bridge will be closed to navigation at all other times.

Ref: LNM 27 through 48-06 and BNM 367, 454-06-MIA CG File: 2362
Chart: 11467

FLORIDA – ATLANTIC INTRACOASTAL WATERWAY – WEST PALM BEACH TO MIAMI – BISCAYNE BAY – INDIAN CREEK CANAL – WEST 63RD STREET BRIDGE: Bridge Repairs.

The West 63rd Street Fixed Bridge, Indian Creek Canal mile 4.0, Miami Beach, FL vertical and horizontal clearances will be reduced due to repairs from September 7 to March 31, 2007.

Ref: LNM 36 through 48-06 CG File 2362
Chart: 11467

FLORIDA – OKEECHOBEE WATERWAY – CALOOSAHATCHEE RIVER – CAPE CORAL BRIDGE: Bridge Repairs.

The horizontal clearance of the Cape Coral Bridge, Okeechobee Waterway mile 142.0, Cape Coral, Lee County, Florida will be reduced to 45 feet from 7:00 a.m. to 5:00 p.m. daily until December 18, 2006, due to repairs.

Ref: LNM 38 through 48-06
Chart: 11428

CG File: 3091

FLORIDA – OKEECHOBEE WATERWAY – CALOOSAHATCHEE RIVER – SAN CARLOS BAY - SANIBEL CAUSEWAY BRIDGE: Bridge Construction.

Work continues on the Sanibel Causeway Bridge across the Caloosahatchee River, Sanibel, Lee County, Florida. Due to this bridge construction the vertical clearance will be reduced to 68 feet until approximately January 15, 2007.

Ref: BNM 1486-06-STP and LNM 25-05 through 48-06

Chart: 11428

FLORIDA – OKEECHOBEE WATERWAY – CALOOSAHATCHEE RIVER – SAN CARLOS BAY - SANIBEL CAUSEWAY BRIDGE: Temporary Safety Zone.

The Coast Guard is establishing a temporary safety zone on the water of San Carlos Bay, Florida in the vicinity of the Sanibel Island Bridge span "C" while bridge construction is conducted. This rule is necessary to ensure the safety of the construction workers and mariners on the navigable water of the United States. This rule is effective through 9 p.m. on June 30, 2007.

Documents indicated in this preamble as being available in the docket are part of docket [COTP 06-220] and are available for inspection or copying at Coast Guard Sector St. Petersburg, Prevention Department, 155 Columbia Drive, Tampa, Florida 33606-3598 between 7:30 a.m. and 3:30 p.m., Monday through Friday, except Federal holidays.

For Further Information Contact: Waterway Management Division at Coast Guard Sector St. Petersburg, (813) 228-2191, Ext. 8307.

Sec. 165.T07-220 Safety Zone; Ft. Myers Beach, Florida.

- (a) Regulated area. The Coast Guard is establishing a temporary safety zone on the waters of San Carlos Bay, Florida, in the vicinity of the Sanibel Island Bridge span "C". This safety zone includes all waters from surface to bottom, within a 400 foot radius extending from the center portion of span "C": at the following coordinates: 26[deg]27-416" N, 082[deg]02-083" W. All coordinates referenced use datum: NAD 83.
- (b) Definitions. As used in this section. Designated representative means Coast Guard Patrol Commanders including Coast Guard coxswains, petty officers and other officers operating Coast Guard vessels, and federal, state, and local officers designated by or assisting the Captain of the Port Sector St. Petersburg, Florida, in the enforcement of regulated navigation areas and safety and security zones.
- (c) Regulations. In accordance with the general regulations in Sec. 165.23 of this part, no person or vessel may anchor, moor or transit the Regulated Area without the prior permission of the Captain of the Port Sector St. Petersburg, Florida, or his designated representative.
- (d) Dates: This rule is effective from 8 a.m. on November 1, 2006, through 9 p.m. on June 30, 2007.
- (e) Enforcement period. This regulated area will only be enforced during specific periods between the dates specified in paragraph (d). The Coast Guard does not know the exact dates of the construction operations at this time, however Sector St. Petersburg will announce each enforcement period by issuing Broadcast Notice to Mariners 24 to 48 hours prior to the start of enforcement. Additionally, on-scene notice will be provided by Coast Guard or other local law enforcement maritime units enforcing the safety zone.

Ref: Federal Register Docket # COTP St. Petersburg-06-220

Chart: 11428

FLORIDA – GULF INTRACOASTAL WATERWAY – SIESTA KEY TO TAMPA BAY – ANNA MARIA SOUND: Supplemental Notice of Proposed Rulemaking.

The Coast Guard is proposing a supplemental change to its notice of proposed rulemaking for modifying the Cortez and Anna Maria drawbridge operating regulations. This supplemental notice of proposed rulemaking is necessary to address written concerns from the public regarding the original notice of proposed rulemaking and oral comments received during a public meeting. Additionally, city officials from Anna Maria, Bradenton Beach and Longboat Key contributed their input to this rulemaking in an effort to relieve vehicular congestion on the above bridges.

This proposed rule would require the Cortez (SR 684) and Anna Maria (SR 64) bridges, miles 87.4 and 89.2, at Anna Maria to open on signal, except that from May 16 through January 14, from 6 a.m. to 7 p.m., the draw need open only on the hour, twenty minutes past the hour and forty minutes past the hour. From January 15 through May 15, the draws need open only on the hour and half-hour from 6 a.m. to 7 p.m. The objective of this revision is to improve vehicle traffic flow on SR 684 and SR 64, especially during peak periods of increased road congestion.

Comments and related material must reach the Coast Guard on or before December 8, 2006

Written comments may be submitted to Commander (dpb), Seventh Coast Guard District, 909 S.E. 1st Avenue, Room 432, Miami, Florida 33131-3050. For further information contact Mr. Michael Lieberum at 305-415-6744 or email mlieberum@d7.uscg.mil. Please include your name and address in all correspondence.

Ref: Public Notice 28-06, LNM 48-06 and Docket Number (CGD07-05-097) Chart: 11411

SAFE BOATING AND SEAMANSHIP PROGRAMS

For addition information on CG Auxiliary Public Education Boating Programs, contact 1-800-336-2628 or <http://www.cgaux7.org/>

HOST	DATES	TIME	LOCATION
U.S. Coast Guard Auxiliary Flotilla 42 (321) 773-7599	Continuous Boating Skills and Seamanship	7:30 p.m.– 9:30 p.m. (Tuesdays & Thursdays) 6 Weeks, 12 Lessons	Palm Bay Community Ctr 1502 Port Malabar Blvd Palm Bay, FL
U.S. Coast Guard Auxiliary Flotilla 78 (727) 360-7496	Continuous Boating Skills and Seamanship	7:30 p.m.– 9:30 p.m. (Mondays) 13 Weeks	Webster Community Ctr 1500 Passe Grille Blvd St Petersburg, FL
U.S. Coast Guard Auxiliary Flotilla 79 (813) 855-6997	Continuous Boating Skills and Seamanship	7:30 p.m.– 9:30 p.m. (Wednesdays) 13 Weeks	5108 Gandy Blvd Salty Sol Boat Ramp Tampa, FL
U.S. Coast Guard Auxiliary Flotilla 7-16 (727) 323-5950	Continuous Boating Skills and Seamanship	7:30 p.m.– 9:30 p.m. (Tuesdays) 13 Weeks	USCG Auxiliary Bldg 3120 Miriam St South Gulfport, FL
U.S. Coast Guard Auxiliary Flotilla 51 (561) 844-3114	Continuous Boating Skills and Seamanship	7:30 p.m.– 9:30 p.m. (Tuesdays & Thursdays) 6 Weeks, 12 Lessons	CG Aux Bldg, P Foster Park 900 E. Blue Heron Blvd Riviera Beach, FL
U.S. Coast Guard Auxiliary Flotilla 55 (561) 585-8918	Continuous Boating Skills and Seamanship	7:00 p.m.– 9:00 p.m. (Mondays & Wednesdays) 6 Weeks, 12 Lessons	Santaluces High School Lawrence Road Lantana, FL
U.S. Coast Guard Auxiliary Flotilla 52 (772) 744-3876	Continuous Boating Safety Program	9:00 a.m.– 5:00 p.m. (Last Saturday of Each Month)	CG Aux Building Jupiter Lighthouse Park Jupiter, FL
U.S. Coast Guard Auxiliary Flotilla 81 (941) 761-4303/761-7393	Continuous Boating Skills and Seamanship	7:00 p.m.– 9:00 p.m. (Tuesdays & Thursdays) 4 Weeks	CG Aux Bldg, G.T.Bray Park 5801 53 rd Ave Court W Bradenton, FL
U.S. Coast Guard Auxiliary Flotilla 14-08 (904) 721-1346	Continuous Boating Safety Program	7:30 a.m.– 5:00 p.m. (Saturdays)	Stellar Building 2900 Hartley Road Jacksonville, FL
U.S. Power Squadron Fort Lauderdale (954) 523-3577	Continuous Basic Safe Boating Course	7:00 p.m. – 9:00 p.m. (1 st Monday of each month)	Lauderdale Marine Ctr 2029 SW 20 th Street Fort Lauderdale, FL
U.S. Coast Guard Auxiliary Flotilla 11-1 (727) 469-8895	Continuous America's Boating Course	7:30 p.m. – 9:30 p.m. (Mondays and Thursdays)	Clearwater Comm Sailing Ctr 1001 Gulf Blvd Sand Key (Clearwater), FL
U.S. Coast Guard Auxiliary Flotilla 09-06 (239) 594-8009	October 23 to December 7, 2006 Boating Skills & Seamanship	7:00 p.m. – 9:00 p.m. (Mondays and Thursdays)	Public Education Facility Wiggins Pass Naples, FL
U.S. Coast Guard Auxiliary Flotilla 09-06 (239) 594-8009	December 16, 2006 Local Knowledge	9:00 a.m. – 12:00 p.m. (Saturday)	Public Education Facility Wiggins Pass Naples, FL

Programs are free; there is a nominal fee for text workbooks, etc.



**U. S. Department of Homeland Security
U. S. Coast Guard Sector Charleston
Marine Safety Information Bulletin**



MSIB 049-06

10 MAY 2006

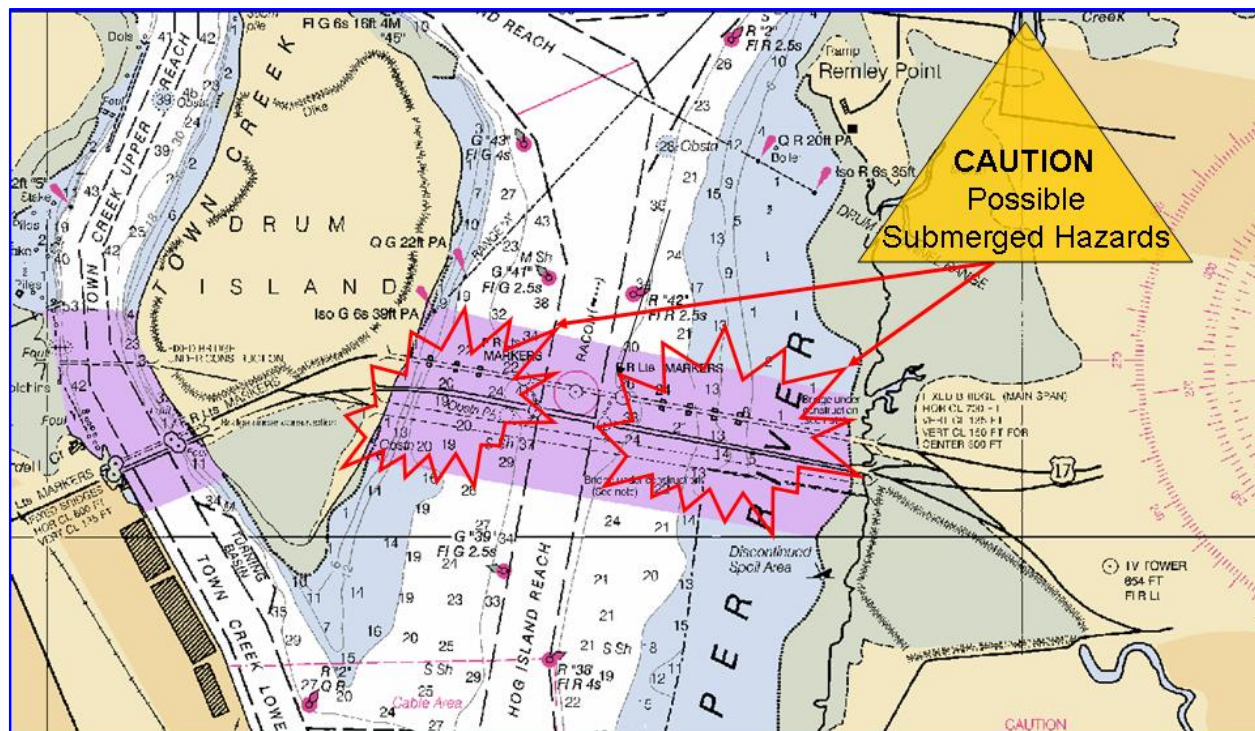
**POSSIBLE SUBMERGED HAZARDS/DEMOLITION DEBRIS IN COOPER RIVER
SHALLOWS FOR DURATION OF GRACE AND PEARMAN BRIDGE DEMOLITION**

Boaters are advised to stay in the main channel when transiting under the new Ravenel Bridge on the Cooper River. The South Carolina Department of Transportation and their demolition contractor are in the process of removing the remaining foundations for the Grace and Pearman bridges. This project will continue into 2007. During this period, there is the possibility of both partially submerged hazards and demolition debris in the areas outside the main channel. The contractor's work area will be marked with temporary buoys, but these buoys may not be visible at night. To avoid hazards boaters should transit only through the main Cooper River channel (HOG ISLAND REACH) or should consider using Town Creek channel as an alternate route.

Boaters are also reminded to obey Navigation Rule 9 and give large ships the right of way while in or planning to cross the main channel. Vessels less than 20 meters long, and sailing vessels, shall not impede the passage of a vessel that can safely navigate only within a narrow channel.

The U.S. Coast Guard has designated the waters under the old and new bridges as a Regulated Navigation Area (shown below in purple). All vessels are prohibited from anchoring, mooring, or loitering within the regulated area, unless specifically authorized by the U.S. Coast Guard.

Boaters should contact Coast Guard Sector Charleston's 24x7 operations center on VHF channel 16 or via phone at (843) 724-7616 to report any concerns or ask any questions about this notice.



“You’re in Command. Please Boat Responsibly!”



Marine Safety Information Bulletin

Port of Palm Beach Draft Restriction – Update #1

Time: 1600/Date: September 11, 2006

The Army Corps of Engineers has completed soundings of the Lake Worth Inlet entrance channel and found shoaling caused by Tropical Depression ERNESTO to be extensive throughout the area. The Captain of the Port has imposed a draft restriction of 28 feet at high water slack on all inbound vessel, 27 feet for vessels carrying oil products, and 29 feet for all outbound vessels. These restrictions will remain in effect until further notice. Palm Beach Harbor Pilots may impose additional restrictions as conditions warrant, in coordination with the Captain of the Port.

The Captain of the Port may be reached at telephone (305) 535-8701, or via Channel 16 VHF FM Marine Radio through Coast Guard Sector Miami.

KARL SCHULTZ
Captain, U.S. Coast Guard
Captain of the Port

Page 96-Paragraph 1162 through Paragraph 1165, read:

of the United States, tugs with tows, and vessels in distress shall be passed at any time.

(FR 11/8/06)

§117.313 New River.

(a) The draw of the S.E. Third Avenue bridge, mile 1.4 at Fort Lauderdale shall open on signal; except that, from 7:30 a.m. to 9 a.m. and 4:30 p.m. to 6 p.m., Monday through Friday, except Federal holidays, the draw need not open. Public vessels of the United States, tugs with tows, and vessels in distress shall be passed at any time.

(b) The draw of the Andrews Avenue bridge, mile 2.3 at Fort Lauderdale, shall open on signal, except that, from 7:30 a.m. to 9 a.m. and 4:30 p.m. to 6 p.m., Monday through Friday, except Federal holidays, the draw need not open. The draw need not open for inbound vessels when the draw of the Florida East Coast Railroad bridge, mile 2.5 at Fort Lauderdale is in the closed position for the passage of a train. Public vessels of the United States, tugs with tows, and vessels in distress shall be passed at any time.

(c) The draw of the Marshal (Seventh Avenue) bridge, mile 2.7 at Fort Lauderdale shall open on signal; except that, from 7:30 a.m. to 9 a.m. and 4:30 p.m. to 6 p.m., Monday through Friday, except Federal holidays, the draw need not open. Public vessels of the United States, tugs with tows, and vessels in distress shall be passed at any time.

§117.315 New River, South Fork.

(a) The draw of the Davie Boulevard (SW. Twelfth Street) bridge, mile 0.9 at Fort Lauderdale shall open on signal; except that, from 7:30 a.m. to 9 a.m. and 4:30 p.m. to 6 p.m., Monday through Friday, except Federal holidays, the draw need not open. Public vessels

Page 249-Paragraph 75, lines 5-7;
read:
frequently shifted in position.
Caution is advised ...
(BP 189888)

Page 250-Paragraph 89, lines 7-9;
read:
junction with the Intracoastal
Waterway; in September 2006, the
controlling depth was less than one
foot. Both channels are subject to
...
(BP 189890)

Page 262-Paragraph 16, lines 4-6;
read:
The bar channel is subject to
continual change. The inlet, used
...
(47/06 CG5; LL/06)

Page 400-Paragraph 115, lines 6-8;
read:
In August 2006, the controlling depth
in the dredged Intracoastal Waterway
channel to the Cape Fear River
junction was 7.7 feet (8.4 feet at
midchannel). Mariners are cautioned
...
(BPs 189879-80)

Page 400-Paragraph 116, lines 6-7;
read:
11.5 miles above Snows Cut. In
August 2006, the controlling depth
was 2.4 feet (3.9 feet at
midchannel) in Wilmington Short Cut.
(BP 189881)

Publication—National Ocean Service—U.S. Coast Pilot 5, Atlantic Coast: Gulf of Mexico, Puerto Rico, and Virgin Islands, 2006 (34th) Edition. Change No. 19.

Coast Pilot 5 34th Ed 2006

Corrections

Page 86-Paragraph 813, read:

(7) Vessels anchored in the Lower Kenner Bend Anchorage are prohibited from using or exercising the ship's hold cargo cranes. Vessels in this anchorage must keep the ship's hold cargo gear in the down and hawsed position, as rigged for sea transits. Deck-mounted cranes, deck booms and stiff legs may be used to take on ships stores and spare parts and may be used to move manifold hoses.

(8) Nothing in this section relieves the owner or person in charge of any vessel from the penalties for obstructing or interfering with navigational aids or for failing to comply with the navigation laws for lights, day shapes, or fog signals and any other applicable laws and regulations.

(FR 10/30/06)

Page 313-Paragraph 58, lines 13-14; read:

September 2006, the controlling depth in the channel was 3.5 feet (5.8 feet at midchannel) with 5.2 feet in the turning basin. An overhead ...

(CL 1314/06)