

the Bulletin Board

VOLUME 18, NUMBER 40

Published by the BNL Personnel Office

AUGUST 4, 1965

BERA FILM SERIES LA DOLCE VITA



PLUS SHORT FEATURE

Thurs., Aug. 5 — Lecture Hall — 8:30 p.m.

"La Dolce Vita" is Federico Fellini's thirteenth film and is, without a doubt, the most talked about and controversial European film in many years. In production more than a year, it cost some one million dollars, an extremely high budget for any European film. It is, in essence, an analysis of contemporary Roman life told in a number of sequences through the experiences of a cynical, yet naive, journalist (Marcello Mastroianni). On an even broader scale, it dissects and lays open a whole swath of society, exposing the decay and tragedy of over-civilization. The opening sequence quickly sets the mood for what is to follow: a helicopter hovers over the startled citizens of Rome — suspended below it is a huge statue of Christ which is being delivered to the Vatican.

Fellini claims that his film "puts a thermometer to a sick world," and states furthermore that "it is my greatest work." Critics have argued pro and con on both points; but whatever else it may be, "La Dolce Vita" is certainly an extraordinary film of gigantic magnitude.

"The most fascinating three hours of cinema turned out in recent years... The most brilliant of all the movies that have attempted to portray the modern temper." —SATURDAY REVIEW

"... deserves all the hurrahs and the impressive awards it has received... Fellini has an uncanny eye for finding the offbeat and grotesque incident, the gross and bizarre occurrence that exposes glaring irony... In sum, it is an awesome film, licentious in content but

(Con't. on page 3)



BERA Is Delighted to Announce A SPECIAL SUMMER PRESENTATION

With the Support of the New York State Council on the Arts

The Orchestra da Camera, sponsored by the Institute of the Arts at Hofstra University, will present a concert of works by Mozart and Prokofiev at the BNL Theatre on Friday, August 27, 1965.

The Orchestra da Camera was created in 1958. Its members were individually selected, wooed and assembled from a group of the most sought-after musicians in America. Creating such a virtuoso orchestra here was possible only because Long Island is in the environs of New York City, the hub and heart of musical America. The magnificent ensemble, easily one of the nation's finest orchestras, includes musicians who played for many years in the famed NBC Symphony under the baton of Arturo Toscanini, plus members of this country's foremost string quartets and woodwind ensembles. An orchestra of thirty-five is the ideal nucleus for a future great symphony orchestra.

The Orchestra da Camera's policy of engaging guest conductors, rather than having a permanent one, has given it great interest and flexibility in program planning. Recent conductors include Herbert Grossman of the NBC TV Opera; Robert Mann, principal violinist of the Juilliard String Quartet; Abraham Kaplan of the Collegiate Chorale; and Maurice Peress and Elyakum Shapira, associate conductors of the New York Philharmonic.



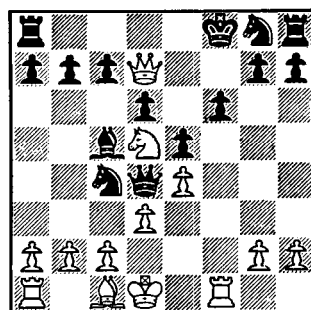
TEN YEAR SERVICE PIN AWARDS

During the month of July, the Laboratory awarded pins and certificates to four employees in recognition of their completion of ten years of service at BNL. The employees are as follows:

FLORENCE V. CALIGURI	Plant Maint.
CHARLES CRUMP	Instrumentation
JOSEPH H. JONES	Photo. & Gr. Arts
EDWIN J. TUTHILL	Nuc. Engineering

CHESS PROBLEM

When you look at this week's problem diagram, it looks as if the game just started but White already has a winning position. Solution elsewhere in the BULLETIN BOARD.



LEONARD BAKER NAMED COMMANDING OFFICER OF NAVAL RESERVE UNIT

Leonard A. Baker, Jr., Manager of Safety Services at Brookhaven National Laboratory, has been named Commanding Officer of Naval Reserve Research Company 3-9. He holds the rank of Commander in the Company. This is a specialized unit of the U.S. Naval Reserve which operates under the technical direction of the Office of Naval Research. It is composed of Naval reserve officers who are scientists, engineers, or research supporting personnel in civilian life.

The unit has several awards to its credit. In 1961, it received the A. Hoyt Taylor Award for the best research project and twice, in 1962 and 1964, it won the Naval Research Award for general excellence.

Company meetings are held the second and third Wednesday of every month at Brookhaven National Laboratory, where about fifty per cent of the unit's members are employed. Openings do exist for Naval Reserve officers who possess scientific, engineering, or teaching skills.

FIRST BNL GOLF CHAMPIONSHIP!

An elimination-type match play tournament will start the week of August 15, with survivors playing second and third rounds during each of the two following weeks. Contestants will be divided into flights and will play (full handicap difference) against opponents of similar skill.

There will be one prize winner in each flight, with the individual flight winners competing against each other (80% of handicap) in a medal play **scheduled** playoff for the 1965 BNL Championship.

No entry fee will be charged, but a completed entry application **must** be in the hands of the Tournament Chairman by August 9. All members who have established BGA handicaps (by submitting scores for 72 holes or more) are eligible. Members who do not yet have handicaps still may have time to play and submit the remaining number of scores to bring their total to 72 holes. If in doubt, check with the Handicap Chairman, Frank Walsh.

Pairings for the first round will be posted in the Recreation Office and at the Middle Island Pro Shop by August 11. You then arrange a mutually convenient date* with your opponent (8/15 through 8/21). You play any two of the three Middle Island nine hole courses for your 18 hole total. Use the difference in handicaps taken on the holes indicated on the score card. The one who wins the greatest number of holes goes on to the second round the next week.

1965 BNL GOLF CHAMPIONSHIP

(Must be received by J. Weiss, 34 Railroad St. by August 9)

Print Name.....Life No.....BNL Ext.....

I have a BGA handicap.....
(signed)

(For use of Tournament Committee. Do not fill in.)

Handicap..... Flight Assignment..... Tournament No.....

Match Play: Winner of greatest number of holes is winner of match regardless of total strokes.

Medal Play: Winner is determined by lowest total strokes for the 18 holes.

*Matches must be played during the allotted period or both players are eliminated. Controversies regarding playing date should be referred to the Tournament Chairman for mediation before the round deadline.

PERSONNEL SERVICES

Sammy Davis in "Golden Boy"

Arrangements have been made to secure discount rates for the Broadway musical hit, "Golden Boy," for the evening performance of Tuesday, August 31. The regular orchestra price is \$9.90, our price is \$6.90; the regular mezzanine price is \$8.60, our price is \$5.75. The offer is extended to us for a limited time only - so the sooner you make arrangements, the better. The deadline for reservations is August 19, or before if the supply is exhausted. Orders must be accompanied by a check payable to the Majestic Theatre.

Antique Fair

Discount tickets are now at the office for the Fifth Annual Antiques Fair and Sale to be presented in Bellport on Aug. 18, 19, and 20 between 11:00 a.m. and 10:00 p.m. for the benefit of Brookhaven Memorial Hospital. Buffet snacks will be served. Regular admission price, \$1.00. Our price, \$.75.

CHILDREN'S SUMMER PROGRAM

The scavenger hunt was a big success this past Friday for the on-site children's Summer Program. Articles ranging from a picture of President Johnson to an empty Campbell's Soup can were included in the hunt, not to mention such interesting items as one dead tennis ball and a lump of sugar. The blue team, under the leadership of Dave Pasta, won the hunt and collected free cokes as prizes.

POOL SCHEDULE

Monday through Friday
2:30 p.m. to 9:30 p.m.

GYM SCHEDULE

Monday through Thursday
Evenings to 9:30

Arrivals and Departures

WELCOME TO BNL

ACCELERATOR	
Donald L. Berntsen	Ext. 322
APPLIED MATHEMATICS	
Hong-bo Chiang	2810
ASSOCIATED UNIVERSITIES, INC.	
Robert J. Butscher	2117
MEDICAL	
Harvard Lyman	2908
PHYSICS	
Kenneth F. Klimek	2430
SECURITY	
William H. Barnes	2392-3

RECENT DEPARTURES

APPLIED MATHEMATICS	
Donald Engelberg	
CHEMISTRY	
Sandra Lee	
MECHANICAL ENGINEERING	
Philip Greenberg	
Thomas P. Walsh	
MEDICAL	
Frances Lewis	
John E. Reynolds	
Arthur Sakamoto	

AROUND THE BASE PADS

By: BOB CARCIELLO

A brilliant display of pitching, hitting and aggressive base-running by Chuck Daly helped lift the Mixups out of the Laboratory League cellar as they posted an 18-13 victory over the Mets. Home runs by Bill Brown, Don Cassidy and Steve Lewkowicz paved the way for eight Potsareebie runs, while Pot pitcher Dan Leahy held the Odd Balls to three scattered runs. Joe Hansen, known around the senior circuit for his homer hitting, belted a two-run homer to give the Phoubars an 8-6 decision over the Deadwoods.

The young Old Timers made it eleven in a row as they posted a very decisive victory over the Backbones, 18-6. Meanwhile, the Braves kept the National League pennant race all tied up by drubbing the Bubble Boys 11-3. The Tritons split a double header with the Floorwalkers, dropping the opener 10-7, and bouncing back to take the night cap, 10-4. Incidentally, Bob Champagne twirled no-hit ball for the Tritons in the second game until the final stanza, when the Floorwalkers clipped him for four runs.

It's all over in the Brookhaven League except for placing behind the League winners. The Blue Jays notched their fourth straight championship in as many tries by crushing Cosmotron, 14-1. The Atom Rays slipped into the cellar as they dropped a 17-8 decision to Medical. Dirty Sox' 22-13 victory over Metallurgy has not affected the latter's second-place stand.

BERA FILM SERIES — (Con't.)

moral and vastly sophisticated in its attitude and what it says."

—NEW YORK TIMES

"Not only an exciting experience, it is likely to be the most talked about movie this year. It is one of the few films that one feels can be seen with increasing enjoyment a second or third time."

—HERALD TRIBUNE

— PLUS —

CLAY

(Origin of the Species)

A most intriguing visual variation on Darwin. Beginning with simple graphic motions on a clay "sea," forms of life emerge which then play, devour one another, metamorphose into worms, gorillas, mermaids, clams, lions, whales and other animals, climaxing in the creation of man himself. The film does not seriously follow any theory of natural history, but evolves its own kind of free-wheeling clay life. The film becomes alternately funny, frightening, wistful and thought-provoking. While suggesting deeper meanings, "Clay" is basically simple in concept. It is also fast-moving and highly entertaining. The Sammy Saltonstall Quartet, a local jazz group at Harvard, provides the accompanying score.

"New hope and applause for an utterly charming and superbly creative short film."

—THE NEW REPUBLIC

**CAFETERIA MENU
AUGUST 4-6**

WEDNESDAY

Continental bean soup.....	.15
Roast beef, pan gravy.....	.65
Spaghetti with meat balls.....	.65
Corn fritters, syrup, bacon strips.....	.50
Whipped potatoes.....	.10
Potatoes au gratin.....	.10
Herb buttered wax beans.....	.10
Baked zucchini with tomato.....	.10
Hot Sand.: Hamburger deluxe, french fries, cole slaw.....	.60
Sand. Special: Turkey and bacon with cole slaw and pickle.....	.65
Cold meat and cheese platter.....	.75
Cantaloupe ring fruit salad.....	.60
Golden salad.....	.60
Country style tomato.....	.15

THURSDAY

Beef consomme.....	.15
Corned beef and cabbage.....	.65
Baked pork chops, dressing.....	.65
Chili con carne.....	
Whipped potatoes.....	.10
Potatoes hashed in cream.....	.10
Buttered peas.....	.10
Harvard beans.....	.10
Hot Sand.: Grilled ham on a kaiser roll, potato salad, pickle.....	.65

Sand. Special: Roast loin of pork on white bread, cole slaw, pickle.....	.60
Fruit cottage cheese bowl.....	.75
Chicken salad platter with apple, grapefruit.....	.75
Under the sea salad.....	.60
Cole slaw.....	.15

FRIDAY

Potato leek soup.....	.15
Fried shrimp, tartar sauce.....	.65
Veal cutlet, Swiss style.....	.65
Corned bf. hash with horseradish sauce.....	.60
Macaroni and cheese.....	.50
Whipped potatoes.....	.10
Parsley buttered potatoes.....	.10
Buttered carrot slices.....	.10
Green beans Almondine.....	.10

Hot Sand.: Fried fillet on a bun with fr. fries and cole slaw..... .60

Sand. Special: Swiss cheese, red pepper relish, potato salad, pickle.....	.50
Seafood salad bowl.....	.75
Banana split platter.....	.75
Stuffed apricot salad garni.....	.60
Waldorf salad.....	.15

**TENNIS TOURNAMENT
FINALS SCHEDULED**

MIXED DOUBLES

Finals: Thursday, August 5, 5:15 p.m.

In an exciting semi-final match, the Keveys emerged the victors as they went all-out to defeat a stubborn Stangby/Palmedo team in three sets (4-6, 6-4, 9-7). They'll face the team of Connell and Merkle in the finals this Thursday.

MEN'S DOUBLES

Finals: Thursday, August 12, 5:15 p.m.

In one semi-final match, Bookless/Kevey advanced to the finals by defeating Upeiner/Andritz (6-1, 6-1). The other semi-final match is yet to be played: Palmedo/Passell vs. Merkle/Auskern.

MEN'S SINGLES

Finals: Thursday, August 19, 5:15 p.m.

Semi-finalists include: J. Elmore, who upset seeded Al Auskern (7-5, 4-6, 6-1); A. Kevey over W. Merkle (6-3, 6-3); J. Brandon over D. Baker (6-2, 6-0); and Nerenberg, who defeated Stearns (6-1, 6-1).

WE NEED YOU! To help officiate the finals, we need a few volunteers. If you'd like to give us a hand, call Dave Ross, Ext. 391.

SOLUTION TO CHESS

- | | |
|--|---------|
| 1. NxKBP | 1. PxN |
| 2. RxP check | 2. NxR |
| 3. B-R6. And mate next or if Black moves | |
| 1. . . . | 1. Q-B7 |
| 2. RxQ | 2. BxR |
| 3. N-R5 and Black loses more pieces. | |

**DETONATION DANCE
DATE DETERMINED**

Set your fuses for 9 p.m., August 11, the date determined for the second summer dance which will commemorate the 99th anniversary of the discovery of dynamite.

Ground zero will be the Recreation Building in the Apartment Area. Chappy and his Chaps will again be on hand to provide the music.

Beer and soda will be available for purchase; those desiring liquids of a more volatile nature may bring their own. Dress is casual. Dates are not necessary, so save the extra 75¢ men.

Till Next Tractate

CLASSIFIED ADS

FOR SALE

1964 CHEVY II - Wagon, auto. trans., excel. cond. Leaving country. M. Furuya, Ext. 2962 or AT 6-3934.

1956 PLYMOUTH - 4-door, r/h, looks its age but runs well. \$150. Ext. 2426.

1958 FORD - Station wagon, in fine running cond. but body rusted. \$250. Ext. 2533 or AT 6-8644 evenings.

1964 CHEVROLET - Biscayne, 6 cyl., std. trans., r/h, 12,000 miles. \$1800. B. Kirkman, Ext. 574 or LT 9-0277 after 6.

1963 MERCURY COMET - S-22. Bucket seats, convertible, std. trans., excel. cond. R. Rooney, Ext. 2704 or GR 5-3417.

1960 STUDEBAKER LARK - Convertible, excel. car. AT 6-9260.

1963 VOLKSWAGEN - White leather seats, r/h, ww's, excel. cond., light blue. \$1195. G. Mansfield, Ext. 2857.

1963 CHEVROLET - Impala, 4-door sedan, white with red interior, 283 V8 engine, ps, auto. trans., r/h, show room cond. Must sell. Price reduced. B. Fox, Ext. 2528.

1957 VOLKSWAGEN - Sunroof sedan, r/h, \$300. Ext. 2488 or SH 4-5875 after 6.

1961 CHEVROLET - Impala, 4-door hardtop, auto. trans., ps, r/h, windshield washer, new tires, new brakes, excel. cond. Asking \$1050. Ext. 7732 or 2786 evenings.

1963 DODGE - Polara 500, ps, hard top, bucket seats, perfect cond., r&h, 3 years or about 25,000 miles left on guarantee. Available August 1. 941-9220 after 4.

1959 DESOTO - Excel. riding cond., ps/pb. \$375. Ext. 301-45.

1960 FORD - Fairlane 500, 6 cyl., auto. trans., r/h, good tires, good cond. Asking \$550. Ext. 7139 or 878-1955 after 6.

1958 CHEVROLET - Belaire, 4-door sedan, brand new 283 cu. in. V8 & power glide trans., showroom cond. in and out. Good rubber. Asking \$625. Ext. 7139 or 878-1955 after 6.

1959 FORD - Fairlane V8, new auto. trans., ww's, r/h, good transportation. \$250. 475-4183 after 6.

1962 FALCON - 4-door sedan, 41,000 miles, new tires, in very good cond. Available middle of Aug. \$650. B. Nijboer, Ext. 7620 or 2779.

1958 PLYMOUTH - 2-door station wagon, std. trans. Scientific attempts to destroy this car have failed. Despite its battered condition, it runs. Available after Aug. 5. F. Levin, Ext. 2838.

1960 FORD - Country Sedan station wagon, 6 cyl., std. trans., orig. owner, excel. running cond. \$600. Ext. 7204 or AT 6-8517 after 5:30.

1956 BUICK - \$30. G. Spatzier, Ext. 2410.

1958 KARMANN GHIA - Needs about \$160 of work. \$350. Janet, Ext. 2589, John, Ext. 7677, or AT 9-3648 after 6.

1960 RAMBLER - Station wagon, V8, auto. trans. ps, r/h. Ext. 7701.

1962 AUSTIN HEALY SPRITE - Excel. cond., 4 new tires, hard top, convertible, & tonneau. \$1100. T. Binnington, Ext. 2111, 1 to 9:30 p.m. or AT 6-1068 weekends.

1964 FORD - Galaxie XL convertible, black with white top, 300 hp, ps, AM-FM radio, excel. cond. \$2,000. M. Sheehan, Ext. 7772.

10' ALASKAN CAMPER - On 1962 ¾ ton Chevy pickup, V8, 4 speed, white, low mileage, with extras. \$3,000. Warren, Ext. 7163 or AR 1-6125.

1955 PLYMOUTH - 4 door, V8, std. trans., \$75. Charlie, Ext. 2454.

1961 PORSCHE - Super 90 roadster. Yellow. Low mileage. \$2,595. Ext. 2169 or HR 3-2614.

1958 CITROEN ID - Still runs but good rather for parts. Any offer considered. Jacek, Ext. 581.

1963 CHEVROLET - Belaire, std. 6, r/h, ww's, 29,000 miles. Excel. cond. Priced for quick sale - \$1175. S. Wagner, Ext. 618.

1961 FALCON - Deluxe, std. trans., r/h, 4-door sedan. Chesapeake blue. Owner leaving country. Best offer. D. Hoare, Ext. 386 or YA 4-3848.

1961 FORD - Country Squire station wagon, auto. trans., full power, V8, r/h. AT 6-9260.

1960 OLDSMOBILE - Dynamic 88, 4-door hardtop, auto. trans., full power, r/h, excel. cond. AT 6-9260.

1957 CHEVROLET - 2-door hardtop, 8 cyl., auto. trans., r/h, good cond., best offer. Joan, Ext. 2273 or 878-1728 after 6.

1959 AUTO UNION 900S - \$350 or best offer. George, Ext. 2243.

1962 MGA - Mark II, 1600 series, new tires, new metallic paint, new top & tonneau, r/h, excel. cond. Must sell. Susan, Ext. 2586 or 281-8736 after 6.

1957 MORRIS MINOR - New brakes, motor overhauled, needs little work, good tires (2 are snow tires). \$200. AT 6-8957 after 5:30.

26' CABIN CRUISER - Chris Craft with 1964 Chrysler 150 hp engine, RCA radio, sleeps 4, head, galley, bilge blower, many other extras. Can be seen at Old Neck Marina, Center Moriches. \$2,600. AT 6-8242 after 5:30.

18' CABIN CRUISER - Lone Star El Dorado, aluminum hull, flying bridge, head, 12 gal. tank, anchor, excel. cond. with trailer. \$600, no motor. \$1,500 with 75 hp Evinrude. Available 1 August. 941-9220 after 4.

14' RUNABOUT - Old Town with 18 hp Evinrude outboard. \$350. Ext. 2151 or 878-1471 after 5:30.

OUTBOARD - 1963 West Bend, 18 hp. Ext. 423.

16' BOAT - 1958 Thompson with 1963 40 hp Evinrude, elec. start, 1965 Mastercraft trailer, tilt, ready for water. \$900. HR 3-5419.

16' SEA SKIFF - Eastern, hardtop, head, rain cover, mooring, canvas, windshield wipers, etc. 1960 40 hp Johnson completely overhauled in 1964. Tilt-bed trailer, mooring space incl. Must sell quickly. \$1200. D. Flint, Ext. 367.

18' INBOARD SKIFF - Chris Craft, 1955, 60 hp motor. \$945. Ext. 482.

14' BOAT - Dory type, completely equipped & incl. winch trailer, cover, & 7½ hp Mercury motor. Ext. 447.

18' BOAT - Trojan, 1962 75 hp Johnson electric, motor used 1 season. Boat kept in boathouse, orig. owner, like new. Many extras. \$1,375. TU 8-5349.

14' BOAT - Cruisers Inc., 1961 Mercury 45 hp, elec., single control, full canvas, excel. cond. Ready for water. PY 8-4783 after 6:30.

14' BOAT - Thompson, 1965 Johnson 40 hp motor. In water, ready to go. Have family, must sell! AT 6-1159.

17' RUNABOUT - Thompson with 35 hp Johnson. \$535. B. Roelofsen, Ext. 2410 or EM 3-2089 after 5.

MOVIE CAMERA - Wollensak, 8 mm, magazine load, 3 turret lens, practically new, \$35. Aronson, Ext. 345.

WASHING MACHINE - & dryer, good working cond., \$50 each. 22'x18' rose colored carpet, \$100. Ext. 622 or 472-0699.

CRIB - Needs refinishing. Also mattress, like new, \$15. Snow treads 590x13, \$7.50. Shotgun, 20 ga. Iver Johnson, \$15. Reed, Ext. 2204.

TIRES - Two 750x14 4-ply nylon tubeless tires, driven 1000 miles. 878-0930 after 6.

ELECTRIC STOVE - 4 burner Welbilt with broiler-oven, \$20. Stan, Ext. 7231 or PA 7-5043 after 6.

GIRL'S USED BICYCLES - Three 20" priced at \$10, \$10, and \$7. Buy any or all. 941-4467 afternoons & evenings.

FURNITURE - Mahogany bedroom set: double bed & mattress, night stand, dresser & mirror, chest of drawers, boudoir chair, \$75. Mahogany 48" breakfront containing drop lid desk, \$40. Lg. glass covered marble cocktail table, \$50. Maple oblong dinette table, almost new, \$35. Colonial hooked oval rug, \$25. Floor lamp with glass tray, \$25. GR 5-1232.

1965 MOTORCYCLE - Yamaha, 80 cc, brand new, still in crate. List price \$370, sell for \$300. R. Brown, Ext. 2281 or 2692.

MISCELLANEOUS - Runner rugs, 6x9 fiber rug. Kitchen farmica top table with 2 upholstered chairs. Elec. 21" Huffy mower and portable electric tool model E-65 grass trimmer and edger. Also 180' heavy duty wire. 286-2280.

PIANO - Upright Schultz & Bauer completely factory reconditioned last fall. \$175. Yamamoto, Ext. 7664 or AT 6-8350.

BEAGLE - Female 2 years old, AKC reg. & inoculated, good with children, kept outside, not yet trained to hunt. Any reasonable offer considered. George, Ext. 2395 or GR 5-7426 after 7.

MISCELLANEOUS - Bench drill press, wood lathe, band saw, all with motors and 2 benches. Asking \$200 for the group. Also 2 guitar forms (aluminum), \$25. Built-rite baby carriage, \$25. Table & 2 matching chairs, \$30. 281-8567 weekdays after 5:30. Sat. or Sun. before noon or after 7.

CAMERA - Century Graphic 2¼x3¼, 4.5 optar lens, 101 mm, graflok back, roll mag. Joe, Ext. 2229.

WANTED

HOME - For loveable, mostly German Shepherd puppy, about 6 weeks old. Abandoned in our driveway. This happy, healthy puppy needs a good home. Do you have room? Ext. 2596 or 878-0038.

BABYSITTING JOBS - Experienced babysitter for hire days or evenings. Sherry, YA 4-5021.

GIRL'S BICYCLE - 24" or 26" wheel, in good cond. Ext. 2222.

LESSONS - Si chiede istruttore per lezioni in lingua italiano in contraccampio con lezioni in lingua inglese. (Italian lessons in exchange for English lessons.) Tony, Ext. 2374.

CARPOOLS

DRIVERS - Two wanted to complete existing carpool from Babylon area. G. Meinken, Ext. 2200.

RIDE - Wanted from Setauket area through September. Charlotte, Ext. 7143.

DRIVER - Wanted for carpool from Port Jeff. village. R. Skelton, Ext. 2950.

DRIVER - Would like to share driving to Brentwood area. G. Rakowsky, Ext. 7225.

DRIVERS - The Heller, Schweller, and Kelch carpool has an opening for a fourth Strathmore to enjoy scenic route & brilliant conversation. Must be early. Ext. 354, 2824, or 2583.

DRIVER - Wishes to join carpool from N. Massapequa, vicinity of Broadway & Southern State Pkwy. D. Gannon, Ext. 639.

DRIVER - Wishes to join car pool from the Deer Park, Dix Hills, Wyandanch area. Call Jack, Ext. 476.

FOR RENT

HOUSE - With 3 bedrooms, furnished. In Brookhaven. Garden & garage. \$150 per mo. Available Sept. 15. Rigbi, Ext. 2324 or AT 6-0643.

ROOM - Furnished, for single woman. Reasonable. 281-8355.

FOUND

GIRL'S WALLET - Found in pool.

WOMAN'S RING - Mother of pearl set. Found in pool.

KEY RING - Found on Bell Avenue.

LICENSE PLATE - California BYX-647. Found on south firebreak, west of south road to dump area.

Recreation Office — 3 Center Street