

CENTER FOR DRUG EVALUATION AND RESEARCH

APPROVAL PACKAGE FOR:

APPLICATION NUMBER

21-268

Final Printed Labeling

APPROVED

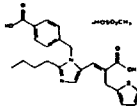
NOV 1 2001

USE IN PREGNANCY

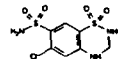
When used in pregnancy during the second and third trimesters, drugs that act directly on the renin-angiotensin system can cause injury and even death to the developing fetus. When pregnancy is detected, TEVETEN[®] HCT Tablets should be discontinued as soon as possible. See WARNINGS: Fetal/Neonatal Morbidity and Mortality.

DESCRIPTION

TEVETEN[®] HCT 600/12.5 and TEVETEN[®] HCT 600/25 (eprosartan mesylate-hydrochlorothiazide) combines an angiotensin II receptor (AT₁ subtype) antagonist and a diuretic, hydrochlorothiazide. TEVETEN[®] (eprosartan mesylate) is a non-biphenyl non-tetrazole angiotensin II receptor (AT₁) antagonist. A selective non-peptide molecule, TEVETEN[®] is chemically described as the monomethanesulfonate of (E)-2-butyl-1-(p-carboxybenzyl)-α-2-thienylmethylimidazole-5-acrylic acid. Its empirical formula is C₂₇H₃₂N₂O₅·S and molecular weight is 520.625. Its structural formula is:



Eprosartan mesylate is a white to off-white free-flowing crystalline powder that is insoluble in water, freely soluble in ethanol, and melts between 248°C and 250°C. Hydrochlorothiazide is 6-chloro-3,4-dihydro-2 H 1,2,4-benzothiazidine-7-sulfonamide 1,1-dioxide. Its empirical formula is C₇H₈ClN₂O₄S₂ and its structural formula is:



Hydrochlorothiazide is a white, or practically white, crystalline powder with a molecular weight of 297.74, which is slightly soluble in water, but freely soluble in sodium hydroxide solution.

TEVETEN[®] HCT is available for oral administration in film-coated, non-scored, capsule-shaped tablet combinations of eprosartan mesylate and hydrochlorothiazide. TEVETEN[®] HCT 600/12.5 contains 735.8 mg of eprosartan mesylate (equivalent to 600 mg eprosartan) and 12.5 mg hydrochlorothiazide in a butterscotch-colored tablet.

TEVETEN[®] HCT 600/25 contains 735.8 mg of eprosartan mesylate (equivalent to 600 mg eprosartan) and 25 mg hydrochlorothiazide in a brick-red tablet. Inactive ingredients of both tablets: microcrystalline cellulose, lactose monohydrate, pregelatinized starch, croscopollose, magnesium stearate, and purified water. Ingredients of the Opady[®] OY-R-3736 butterscotch film coating: hypromellose, polyethylene glycol 400, titanium dioxide, iron oxide black, and iron oxide yellow. Ingredients of the Opady[®] II 33G24616 pink film coating: hypromellose, lactose monohydrate, macrophospholite 3000, triacetin, titanium dioxide, iron oxide red, and iron oxide yellow.

CLINICAL PHARMACOLOGY

Mechanism of Action

Eprosartan

Angiotensin II (formed from angiotensin I in a reaction catalyzed by angiotensin-converting enzyme [kininase II]), a potent vasoconstrictor, is the principal pressor agent of the renin-angiotensin system. Angiotensin II also stimulates aldosterone synthesis and secretion by the adrenal cortex, cardiac contraction, renal reabsorption of sodium, activity of the sympathetic nervous system, and smooth muscle cell growth. Eprosartan blocks the vasoconstrictor and aldosterone-secreting effects of angiotensin II by selectively blocking the binding of angiotensin II to the AT₁ receptor found in many tissues (e.g., vascular smooth muscle, adrenal gland). There is also an AT₂ receptor found in many tissues but it is not known to be associated with cardiovascular homeostasis. Eprosartan does not exhibit any partial agonist activity at the AT₁ receptor. Its affinity for the AT₁ receptor is 1,000 times greater than for the AT₂ receptor. *In vitro* binding studies indicate that eprosartan is a reversible, competitive inhibitor of the AT₁ receptor. Blockade of the AT₁ receptor removes the negative feedback of angiotensin II on renin secretion, but the resulting increased plasma renin activity and circulating angiotensin II do not overcome the effect of eprosartan on blood pressure.

TEVETEN[®] HCT (eprosartan mesylate-hydrochlorothiazide) does not inhibit kininase II, the enzyme that converts angiotensin I to angiotensin II and degrades bradykinin; whether this has clinical relevance is not known. It does not bind to or block other hormone receptors or ion channels known to be important in cardiovascular regulation.

Hydrochlorothiazide

Hydrochlorothiazide is a thiazide diuretic. Thiazides affect the renal tubular mechanisms of electrolyte reabsorption, directly increasing excretion of sodium and chloride in approximately equivalent amounts. Indirectly, the diuretic action of hydrochlorothiazide reduces plasma volume, with consequent increases in plasma renin activity, increases in aldosterone secretion, increases in urinary potassium loss, and decreases in serum potassium. The renin-aldosterone link is mediated by angiotensin II, so coadministration of an angiotensin II receptor antagonist tends to reverse the potassium loss associated with these diuretics. The mechanism of the antihypertensive effect of thiazides is unknown.

Pharmacokinetics

General

Eprosartan

Absolute bioavailability following a single 300-mg oral dose of eprosartan is approximately 13%. Eprosartan plasma concentrations peak at 1 to 2 hours after an oral dose in the fasted state. Administering eprosartan with food delays absorption, and causes variable changes (<25%) in C_{max} and AUC values which do not appear clinically important. Plasma concentrations of eprosartan increase in a slightly less than dose-proportional manner over the 100 mg to 800 mg dose range. The terminal elimination half-life of eprosartan following oral administration is typically 5 to 9 hours. Eprosartan does not significantly accumulate with chronic use.

Hydrochlorothiazide

When hydrochlorothiazide plasma levels have been followed for at least 24 hours, the plasma half-life has been observed to vary between 5.6 and 14.8 hours.

Metabolism and Excretion

Eprosartan

Eprosartan is eliminated by biliary and renal excretion, primarily as unchanged compound. Less than 2% of an oral dose is excreted in the urine as a glucuronide. There are no active metabolites following oral and intravenous dosing with [¹⁴C] eprosartan in human subjects. Eprosartan was the only drug-related compound found in the plasma and feces. Following intravenous [¹⁴C] eprosartan, about 61% of the material is recovered in the feces and about 37% in the urine. Following an oral dose of [¹⁴C] eprosartan, about 50% is recovered in the feces and about 7% in the urine. Approximately 20% of the radioactivity excreted in the urine was an acyl glucuronide of eprosartan with the remaining 80% being unchanged eprosartan. Eprosartan is not metabolized by cytochrome P450 enzymes.

Hydrochlorothiazide

Hydrochlorothiazide is not metabolized but is eliminated rapidly by the kidney. At least 61 percent of the oral dose is eliminated unchanged within 24 hours.

Distribution

Eprosartan

Plasma protein binding of eprosartan is high (approximately 98%) and constant over the concentration range achieved with therapeutic doses.

The pooled population pharmacokinetic analysis from two Phase 3 trials of 299 men and 172 women with mild to moderate hypertension (aged 20 to 93 years) showed that eprosartan exhibited a population mean oral clearance (CL/F) of 0.6 L/h for an average 60-year-old patient of 48.5 L/h. The population mean steady-state volume of distribution (V_{ss}/F) was 308 liters. Eprosartan pharmacokinetics were not influenced by weight, race, gender or severity of hypertension at baseline. Oral clearance was shown to be a linear function of age with CL/F decreasing 0.62 L/h for every year increase.

Hydrochlorothiazide

Hydrochlorothiazide crosses the placental but not the blood-brain barrier and is excreted in breast milk.

Special Populations

Pediatric: Eprosartan pharmacokinetics have not been investigated in patients younger than 18 years of age.

Geriatric: Following single oral dose administration of eprosartan to healthy elderly men, (aged 68 to 78 years), AUC, C_{max}, and T_{max} eprosartan values increased, on average, by approximately twofold, compared to healthy young men (aged 20 to 38 years) who received the same dose. The extent of plasma protein binding is not influenced by age.

Gender: There was no difference in the pharmacokinetics and plasma protein binding between men and women following single oral dose administration of eprosartan.

Race: A pooled population pharmacokinetic analysis of 442 Caucasian and 29 non-Caucasian hypertensive patients showed that oral clearance and steady-state volume of distribution were not influenced by race.

Renal Insufficiency: Following administration of eprosartan 200 mg b.i.d. for 7 days, patients with mild renal impairment (CL_{cr} 60 to 80 mL/min) showed mean AUC and C_{max} similar to patients with normal renal function. Compared to patients with normal renal function, mean AUC and C_{max} values were approximately 30% higher in patients with moderate renal impairment (CL_{cr} 30 to 59 mL/min) and 50% higher in patients with severe renal impairment (CL_{cr} 5 to 29 mL/min). The unbound eprosartan fraction was not influenced by mild to moderate renal impairment, but increased approximately twofold in a few patients with severe renal impairment. No dosage adjustment is necessary for patients with renal impairment.

Hepatic Insufficiency: Eprosartan AUC (but not C_{max}) values increased, on average, by approximately 40% in men with decreased hepatic function compared to healthy men after a single 100 mg oral dose of eprosartan. The extent of eprosartan plasma protein binding was not influenced by hepatic dysfunction. No dosage adjustment is necessary for patients with hepatic impairment.

Drug Interactions

Eprosartan

Concomitant administration of eprosartan with digoxin had no effect on a single oral-dose digoxin pharmacokinetics. Concomitant administration of eprosartan and warfarin had no effect on steady-state prothrombin time ratios (PT/R) in healthy volunteers. Concomitant administration of eprosartan and glyburide in diabetic patients did not affect 24-hour plasma glucose profiles. Eprosartan pharmacokinetics were not affected by concomitant administration of ranitidine. Eprosartan did not inhibit human cytochrome P450 enzymes CYP1A, 2A6, 2C9B, 2C19, 2D6, 2E, and 3A *in vitro*. Eprosartan steady-state plasma concentrations were not affected by concomitant administration of ketoconazole or fluconazole, potent inhibitors of CYP3A and 2C9, respectively.

Hydrochlorothiazide

There is no pharmacokinetic interaction between 600 mg eprosartan and 12.5 mg hydrochlorothiazide.

Pharmacodynamics and Clinical Effects

Eprosartan

Eprosartan inhibits the pharmacologic effects of angiotensin II infusions in healthy adult men. Single oral doses of eprosartan from 10 mg to 400 mg have been shown to inhibit the vasopressor, renal vasoconstrictive and aldosterone secretory effects of intravenous angiotensin II with complete inhibition evident at doses of 350 mg and above. Eprosartan inhibits the pressor effects of angiotensin II infusions. A single oral dose of 350 mg of eprosartan inhibits pressor effects by approximately 100% at peak, with approximately 30% inhibition persisting for 24 hours. The absence of angiotensin II AT₁ agonist activity has been demonstrated in healthy adult men. In hypertensive patients treated chronically with eprosartan, there was a twofold rise in angiotensin II plasma concentration and a twofold rise in plasma renin activity, while plasma aldosterone levels remained unchanged. Serum potassium levels also remained unchanged in these patients.

Achievement of maximal blood pressure response to a given dose in most patients may take 2 to 3 weeks of treatment. Onset of blood pressure reduction is seen within 1 to 2 hours of dosing with less instances of orthostatic hypotension. Blood pressure control is maintained with once- or twice-daily dosing over a 24-hour period. Discontinuing treatment with eprosartan does not lead to a rapid rebound increase in blood pressure. There was no change in mean heart rate in patients treated with eprosartan in controlled clinical trials.

Eprosartan increases mean effective renal plasma flow (ERPF) in salt-replete and salt-restricted normal subjects. A dose-related increase in ERPF of 25% to 30% occurred in salt-restricted normal subjects, with the effect plateauing between 200 mg and 400 mg doses. There was no change in ERPF in hypertensive patients and patients with renal insufficiency on normal salt diets. Eprosartan did not reduce glomerular filtration rate in patients with renal insufficiency or in patients with hypertension, after 7 days and 28 days of dosing, respectively. In hypertensive patients and patients with chronic renal insufficiency eprosartan did not change fractional excretion of sodium and potassium.

Eprosartan (1200 mg once daily for 7 days or 300 mg twice daily for 28 days) had no effect on the excretion of uric acid in healthy men, patients with essential hypertension or those with varying degrees of renal insufficiency.

There were no effects on mean levels of fasting triglycerides, total cholesterol, HDL cholesterol, LDL cholesterol or fasting glucose.

Clinical Trials

Eprosartan mesylate

The safety and efficacy of TEVETEN[®] (eprosartan mesylate) has been evaluated in controlled clinical trials worldwide that enrolled predominantly hypertensive patients with sitting DBP ranging from 95 mmHg to ≤ 115 mmHg. There is also some experience with use of eprosartan together with other antihypertensive drugs in more severe hypertension.

The antihypertensive effects of TEVETEN[®] was demonstrated principally in five placebo-controlled trials (4 to 13 weeks' duration) including dosages of 400 mg to 1200 mg given once daily (two studies), 25 mg to 400 mg twice daily (two studies), and one study comparing total daily doses of 400 mg to 800 mg given once daily or twice daily. The five studies included 1,111 patients randomized to eprosartan and 395 patients randomized to placebo. The studies showed dose-related antihypertensive responses.

At study endpoint, patients treated with TEVETEN[®] at doses of 600 mg to 1200 mg given once daily experienced significant decreases in sitting systolic and diastolic blood pressure at trough, with differences from placebo of approximately 5-10/3-6 mmHg. Limited experience is available with the dose of 1200 mg administered once daily. In a direct comparison of 200 mg to 400 mg b.i.d. with 400 mg to 800 mg q.d. of TEVETEN[®], effects at trough were similar. Patients treated with TEVETEN[®] at doses of 200 mg to 400 mg given twice daily experienced significant decreases in sitting systolic and diastolic blood pressure at trough, with differences from placebo of approximately 7-10/4-6 mmHg.

Peak (1 to 3 hours) effects were uniformly, but moderately, larger than trough effects with b.i.d. dosing, with the trough-to-peak ratio for diastolic blood pressure 65% to 80%. In the once-daily dose-response study, trough-to-peak response of ≤ 50% were observed at some doses (including 1200 mg), suggesting attenuation of effect at the end of the dosing interval.

The antihypertensive effect of TEVETEN[®] was similar in men and women, but was somewhat smaller in patients over 65. There were too few black subjects to determine whether their response was similar to Caucasians. In general, blacks (usually a low renin population) have had smaller responses to ACE inhibitors and angiotensin II inhibitors than Caucasian populations.

Angiotensin-converting enzyme (ACE) inhibitor-induced cough (a dry, persistent cough) can lead to discontinuation of ACE inhibitor therapy. In one study, patients who had previously coughed while taking an ACE inhibitor were treated with eprosartan, an ACE inhibitor (enalapril) or placebo for six weeks. The incidence of dry, persistent cough was 2.2% on eprosartan, 4.4% on placebo, and 20.5% on the ACE inhibitor. In a second study comparing the incidence of cough in 259 patients treated with eprosartan to 261 patients treated with the ACE inhibitor enalapril, the incidence of dry, persistent cough in eprosartan-treated patients (1.5%) was significantly lower (P=0.018) than that observed in patients treated with the ACE inhibitor (5.4%). In addition, analysis of overall data from six double-blind clinical trials involving 1,554 patients showed an incidence of spontaneously reported cough in patients treated with eprosartan of 3.5%, similar to placebo (2.6%).

Hydrochlorothiazide
After oral administration of hydrochlorothiazide, diuresis begins within 2 hours, peaks in about 4 hours, and lasts about 6 to 12 hours.

TEVETEN[®] HCT

eprosartan mesylate-hydrochlorothiazide tablets
600 mg/12.5 mg
600 mg/25 mg

Eprosartan mesylate - Hydrochlorothiazide

Four adequate and well-controlled studies were conducted to assess the antihypertensive effectiveness of TEVETEN[®] Hydrochlorothiazide in 1457 patients with mild to moderate essential hypertension. In a 2x2 factorial study with 112-119 hypertensive patients per arm, the mean baseline and placebo-adjusted reductions in blood pressure at 6 weeks were 3.6/2.1 mmHg on eprosartan 600 mg, 3.6/1.8 mmHg on hydrochlorothiazide 12.5 mg, and 10.0/5.8 mmHg on the combination.

INDICATIONS AND USAGE

TEVETEN[®] HCT is indicated for the treatment of hypertension. It may be used alone or in combination with other antihypertensives such as a calcium channel blocker. This fixed dose combination is not indicated for initial therapy (see DOSAGE AND ADMINISTRATION).

CONTRAINDICATIONS

TEVETEN[®] HCT is contraindicated in patients who are hypersensitive to this product or any of its components.

Because of the hydrochlorothiazide component, this product is contraindicated in patients with anuria or hypersensitivity to other sulfonamide-derived drugs.

WARNINGS

Fetal/Neonatal Morbidity and Mortality

Drugs that act directly on the renin-angiotensin system can cause fetal and neonatal morbidity and death when administered to pregnant women. Several dozen cases have been reported in the world literature in patients who were taking angiotensin-converting enzyme inhibitors. When pregnancy is detected, TEVETEN[®] HCT (eprosartan mesylate-hydrochlorothiazide) should be discontinued as soon as possible.

The use of drugs that act directly on the renin-angiotensin system during the second and third trimesters of pregnancy has been associated with fetal and neonatal injury, including hypotension, neonatal skull hypoplasia, anuria, reversible or irreversible renal failure, and death. Oligohydramnios has also been reported, presumably resulting from decreased fetal renal function; oligohydramnios in this setting has been associated with fetal limb contractures, craniofacial deformation, and hypoplastic lung development. Prematurity, intrauterine growth retardation, and patent ductus arteriosus have also been reported, although it is not clear whether these occurrences were due to exposure to the drug.

These adverse effects do not appear to have resulted from intrauterine drug exposure that has been limited to the first trimester. Mothers whose embryos and fetuses are exposed to an angiotensin II receptor antagonist only during the first trimester should be so informed. Nevertheless, when patients become pregnant, physicians should advise the patient to discontinue the use of eprosartan as soon as possible.

Rarely (probably less often than once in every thousand pregnancies), no alternative to a drug acting on the renin-angiotensin system will be found. In these rare cases, the mothers should be apprised of the potential hazards to their fetuses, and serial ultrasound examinations should be performed to assess the intra-uterine environment.

If oligohydramnios is observed, TEVETEN[®] HCT should be discontinued unless it is considered life-saving for the mother. Contraction stress testing (CST), a nonstress test (NST) or biophysical profiling (BPP) may be appropriate, depending upon the week of pregnancy. Patients and physicians should be aware, however, that oligohydramnios may not appear until after the fetus has sustained irreversible injury.

Infants with histories of in utero exposure to an angiotensin II receptor antagonist should be closely observed for hypotension, oliguria, and hyperkalemia. If signs occur, attention should be directed toward support of blood pressure and renal perfusion. Exchange transfusion or dialysis may be required as means of reversing hypotension and/or substituting for disordered renal function.

Eprosartan mesylate, alone or in combination with hydrochlorothiazide, has been shown to produce maternal and fetal toxicities (maternal and fetal mortality, low measured body weight and food consumption, respiration, absorption and liver loss) in pregnant rabbits given oral doses as low as 10 mg eprosartan and 3 mg hydrochlorothiazide/day. No maternal or fetal adverse effects were observed in rabbits at 3 mg eprosartan/day alone or in combination with 1 mg/day of hydrochlorothiazide. This oral dose yielded a systemic exposure (AUC) to unbound eprosartan approximately equal to the human systemic exposure achieved with the dose of eprosartan mesylate contained in the minimum recommended human dose of TEVETEN[®] HCT (600 mg eprosartan/day). No adverse effects on in utero or postnatal development and maturation of offspring were observed when eprosartan mesylate was administered to pregnant rats at oral doses up to 1000 mg eprosartan/day (the 1000 mg eprosartan/day dose in non-pregnant rats yielded systemic exposure to unbound eprosartan approximately 8 times the exposure achieved in humans given 600 mg/day).

Thiazides cross the placental barrier and appear in cord blood. There is a risk of fetal or neonatal jaundice, thrombocytopenia, and possibly other adverse reactions that have occurred in adults.

Hypotension in Volume- and/or Salt-Depleted Patients

In patients with an activated renin-angiotensin system, such as volume- and/or salt-depleted patients (e.g., those being treated with diuretics), symptomatic hypotension may occur. These conditions should be corrected prior to administration of TEVETEN[®] HCT or the treatment should start under close medical supervision. If hypotension occurs, the patient should be placed in the supine position and, if necessary, given an intravenous infusion of normal saline. A transient hypotensive response is not a contraindication to further treatment, which usually can be continued without difficulty once the blood pressure has stabilized.

Hydrochlorothiazide

Impaired Hepatic Function

Thiazides should be used with caution in patients with impaired hepatic function or progressive liver disease, since minor alterations of fluid and electrolyte balance may precipitate hepatic coma.

Hypersensitivity Reactions

Hypersensitivity reactions to hydrochlorothiazide may occur in patients with or without a history of allergy or bronchial asthma, but are more likely in patients with such a history.

Systemic Lupus Erythematosus

Thiazide diuretics have been reported to cause exacerbation or activation of systemic lupus erythematosus.

Lithium Interaction

Lithium generally should not be given with thiazides (see PRECAUTIONS, Drug Interactions, Hydrochlorothiazide, Lithium).

PRECAUTIONS

General

Hypokalemia may occur or may be precipitated in certain patients receiving Thiazide Therapy. Thiazides have been shown to increase the urinary excretion of magnesium; this may result in hypomagnesemia.

Thiazides may decrease urinary calcium excretion. Thiazides may cause demineralization and slight elevation of serum calcium in the absence of known disorders of calcium metabolism. Marked hypercalcemia may be evidence of hidden hyperparathyroidism. Thiazides should be discontinued before carrying out tests for parathyroid function.

In diabetic patients, dosage adjustment of insulin or oral hypoglycemic agents may be required. Hypoglycemia may occur with thiazide diuretics. Thus latent diabetes mellitus may become manifest during thiazide therapy.

The antihypertensive effects of hydrochlorothiazide (HCT) may be enhanced in postmyocardial infarction patients.

Electrolyte Imbalance

Periodic determination of serum electrolytes to detect possible electrolyte imbalance should be performed at appropriate intervals.

All patients receiving thiazide therapy should be observed for clinical signs of fluid and electrolyte imbalance: hypokalemia, hypochloremic alkalosis, and hypobolemia. Serum and urine electrolyte determinations are particularly important when the patient is vomiting excessively or receiving parenteral fluids. Warning signs or symptoms of fluid and electrolyte imbalance irrespective of cause, include dryness of mouth, thirst, weakness, lethargy, drowsiness, restlessness, confusion, stupor, muscle pain or cramps, muscular fatigue, hypotension, rigors, tachycardia, and gastrointestinal disturbances such as nausea and vomiting. Hypokalemia may develop, especially with loop diuretics, when severe diarrhea is present or after prolonged therapy.

Interference with adequate oral electrolyte intake will also contribute to hypokalemia. Hypokalemia may cause cardiac arrhythmias and may also enhance or exaggerate the response of the heart to the toxic effects of digitalis (e.g., increased ventricular irritability).

Although any chloride deficit is generally mild and usually does not require specific treatment (except under extraordinary circumstances [as in liver disease or renal disease]), chloride replacement may be required in the treatment of metabolic alkalosis.

© 1997 Hoechst Marion

occurred in 0.2% of patients taking TEVETEN® (one patient) and in no patient given placebo in controlled clinical trials. Four patients receiving TEVETEN® in clinical trials were withdrawn for thrombocytopenia. In one case, thrombocytopenia was present prior to dosing with TEVETEN®. Serum potassium. A potassium value of 1.6 mmol/L occurred in 0.2% of patients taking TEVETEN® and 0.3% of patients given placebo in controlled clinical trials. One patient was withdrawn from clinical trials for hyperkalemia and three for hypokalemia.

Additional Information:

Among the adverse events reported for patients receiving either TEVETEN® monotherapy or TEVETEN®/hydrochlorothiazide combination therapy in the TEVETEN® HCT clinical trials, some adverse events are not included in the current labeling for either TEVETEN® or HCTZ monotherapy. The adverse events which are not currently included in the labeling for TEVETEN® or hydrochlorothiazide monotherapy include the following: angioedema, leukopenia, blood urea nitrogen increased, edema peripheral, eosinophilia, and WBC increased. The majority of these adverse events were reported in the open-label long-term trials and were reported in small numbers of patients receiving TEVETEN® alone or TEVETEN® in combination with hydrochlorothiazide. All of these adverse events were either not reported in patients receiving TEVETEN® monotherapy or combination therapy with hydrochlorothiazide during the double-blind period of the controlled trials, or were reported at an incidence of 1.1% or in only one patient per treatment group in the controlled trials. The overall safety profile of the TEVETEN®/hydrochlorothiazide combination treatment is as expected based on the safety profile of each of the components and what is generally known about the patient population.

OVERDOSAGE

Preparation message

Limited data are available regarding overdose. Appropriate symptomatic and supportive therapy should be given if overdose should occur. There was no mortality in rats and mice receiving oral doses of up to 3000 mg eprosartan/kg and in dogs receiving oral doses of up to 1000 mg eprosartan/kg.

Hydrochlorothiazide

The most common signs and symptoms observed are those caused by electrolyte depletion (hypokalemia, hypochloremia, and hyponatremia) and dehydration resulting from excessive diuresis. If digoxin has also been administered, hypokalemia may accentuate cardiac arrhythmias. The degree to which hydrochlorothiazide is removed by hemodialysis has not been established. The oral LD50 of hydrochlorothiazide is greater than 10 g/kg in both mice and rats.

DOSE AND ADMINISTRATION

The usual recommended starting dose of eprosartan is 600 mg once daily when used as monotherapy in patients who are not volume-depleted (see WARNINGS, Hypotension in Volume- and/or Salt-Depleted Patients). Eprosartan can be administered once or twice daily and total daily doses ranging from 400 mg to 600 mg. There is limited experience with doses beyond 600 mg/day.

If the antihypertensive effect measured at trough using once-daily monotherapy dosing is inadequate, a twice-daily regimen at the same total daily dose or an increase in dose may give a more satisfactory response. Achievement of maximum blood pressure reduction in most patients may take 2 to 3 weeks.

HCTZ is effective in doses of 12.5 mg to 50 mg once daily.

To minimize dose-independent side effects, it is usually appropriate to begin combination therapy only after a patient has failed to achieve the desired effect with monotherapy. The side effects (see WARNINGS) of eprosartan are generally mild and apparently independent of dose, those of hydrochlorothiazide are a mixture of dose-dependent (primarily hypokalemia) and dose independent (e.g., pancreatitis) phenomena, the former much more common than the latter. Therapy with any combination of eprosartan and hydrochlorothiazide will be associated with both sets of dose-independent side effects.

Replacement Therapy

TEVETEN® HCT (eprosartan mesylate/hydrochlorothiazide combination) may be substituted for the individual components.

The usual recommended dose of TEVETEN® HCT is 600 mg/12.5 mg once daily when used as combination therapy in patients who are not volume-depleted (see WARNINGS, Hypotension in Volume- and/or Salt-Depleted Patients).

If the antihypertensive effect measured at trough using TEVETEN® HCT 600/12.5 is inadequate, patients may be titrated to TEVETEN® HCT 600/25 once daily. Higher doses have not been studied in combination. Achievement of maximum blood pressure reduction in most patients may take 2 to 3 weeks.

If the patient under treatment with Teveten® HCT requires additional blood pressure control at trough, or to maintain a twice a day dosing schedule of monotherapy, 300 mg TEVETEN® may be added as evening dose.

TEVETEN® HCT may be used in combination with other antihypertensive agents such as calcium channel blockers if additional blood pressure-lowering effect is required. Discontinuation of treatment with eprosartan does not lead to a rapid rebound increase in blood pressure.

Febrile, Hepatically Impaired, or Renally Impaired Patients:

No initial dosing adjustment is generally necessary for febrile or hepatically impaired patients or those with renal impairment.

TEVETEN® HCT may be taken with or without food.

HOW SUPPLIED

TEVETEN® HCT (eprosartan mesylate/hydrochlorothiazide combination) is available as film-coated, capsule-shaped tablets, debossed with "SOLVAY" on one side and "3147" or "3150" on the other, supplied as bottles of 100 tablets as follows:

Eprosartan (mg)	HCTZ (mg)	Color	NDC 6001
600	12.5	Butterfly	3147-01
600	25	Black red	3150-01

STORAGE

Store at controlled room temperature 20° to 25°C (68° to 77°F); (see USP Controlled Room Temperature).

R_x only

Osady® is a registered trademark of Celcor, West Point, Pennsylvania, USA

©2001 UNIMED Pharmaceuticals, Inc.
A Solvay Pharmaceuticals, Inc. Company

Manufactured by

Solvay Pharmaceuticals, B.V.
Ost, The Netherlands

Marketed by
UNIMED Pharmaceuticals, Inc.
A Solvay Pharmaceuticals, Inc. Company
Deerfield, IL 60015

10/99/0001/0001

Lot:
Exp:

BAR CODE


NDC 0051-5147-01

TEVETEN[®]HCT

600 mg/12.5 mg

*Each tablet contains 735.8 mg of eprosartan mesylate equivalent to 600 mg of eprosartan and 12.5 mg of hydrochlorothiazide.

100 Tablets Rx only

 UNIMED
Pharmaceuticals

Store at 20° to 25°C (68° to 77°F) [See USP Controlled Room Temperature].
Each tablet contains 735.8 mg of eprosartan mesylate (equivalent to 600 mg of eprosartan) and 12.5 mg of hydrochlorothiazide.
Dosage: See accompanying prescribing information.
Important: Use safety closures when dispensing this product unless otherwise directed by a physician or requested by purchaser.

Manufactured for:
 UNIMED
PHARMACEUTICALS, INC.
A Solvay Pharmaceuticals, Inc. Company
Deerfield, IL 60015-2544

50-0014-00 Rev 05/01