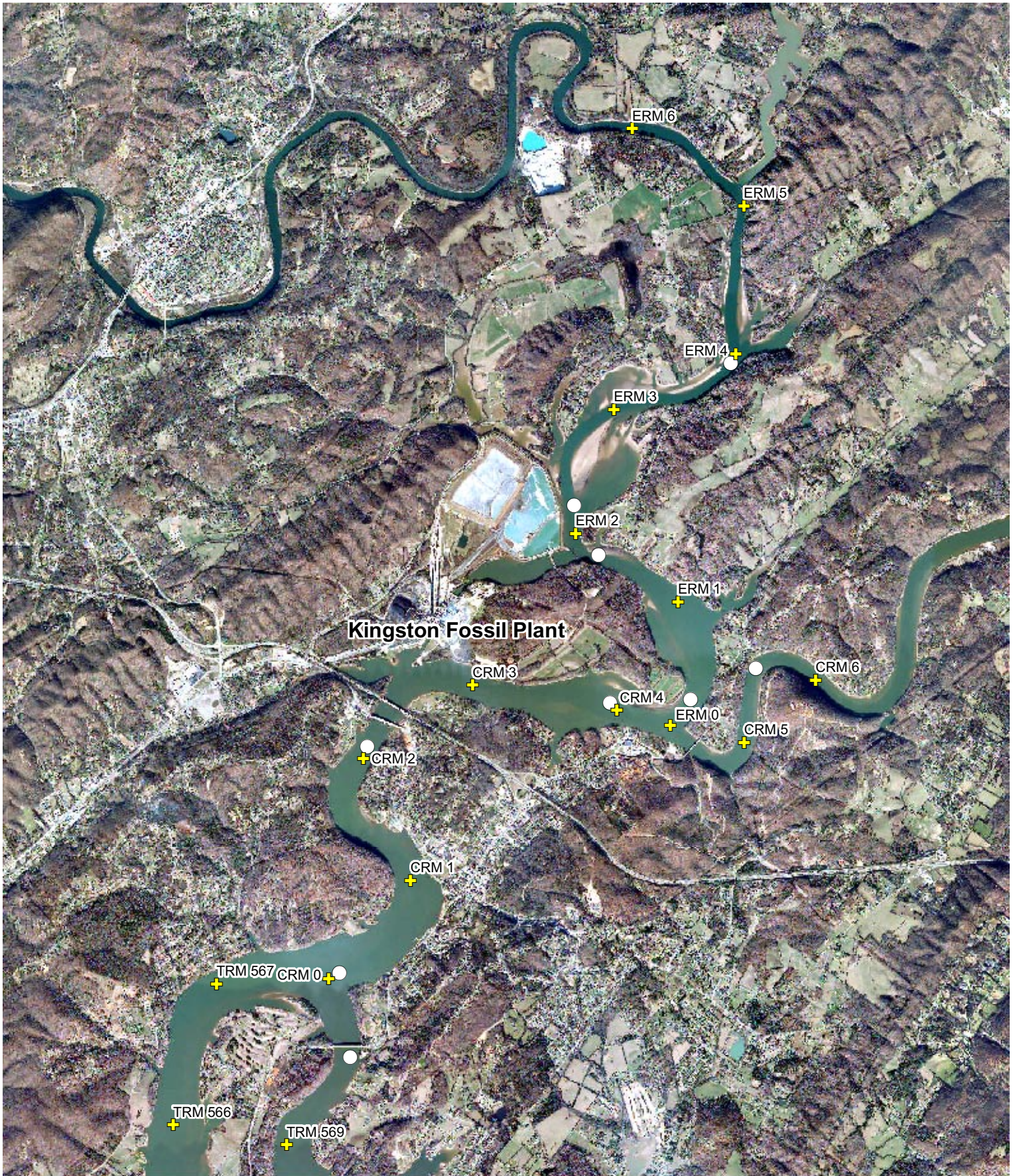
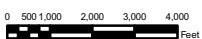


TVA River Sampling on January 2, 2009



Kingston Fossil Plant



Legend

- - TVA River Sampling Locations
- CRM - Clinch River Mile
- ERM - Emory River Mile
- TRM - Tennessee River Mile





KNOXVILLE DIVISION
505 EAST BROADWAY AVE.
MARYVILLE, TN 37804
(865) 977-1200 FAX (865) 984-8616
http://www.microbac.com
E-Mail: knoxville@microbac.com

STATE CERT ID.
TN 02017

CHEMISTRY · MICROBIOLOGY · FOOD SAFETY · CONSUMER PRODUCTS
WATER · AIR · WASTES · FOOD · PHARMACEUTICALS · NUTRACEUTICALS

CERTIFICATE OF ANALYSIS

TENNESSEE VALLEY AUTHORITY
JOSEPH BURKE
4200 GREENWAY DRIVE
KNOXVILLE, TN 37918

Date Reported 1/5/2009
Date Received 1/2/2009
Cust P.O. CC ON FILE
Invoice No. 62628
Cust # T060
Sample Date 1/2/2009
Permit No.

Work Order Number: 0901-00014

Subject: KINGSTON FOSSIL PLANT - RIVER SAMPLES

Table with 7 columns: Test, Method, Result, Qual, Date, Time, Tech. Contains data for various metals and solids tests.

002 KIF-TRM 568.5-SW-01/02/09 1018 DISSOLVED METALS

Table with 7 columns: Test, Method, Result, Qual, Date, Time, Tech. Contains data for dissolved metals tests.





KNOXVILLE DIVISION
 505 EAST BROADWAY AVE.
 MARYVILLE, TN 37804
 (865) 977-1200 FAX (865) 984-8616
 http://www.microbac.com
 E-Mail: knoxville@microbac.com

STATE CERT ID.
 TN 02017

CHEMISTRY · MICROBIOLOGY · FOOD SAFETY · CONSUMER PRODUCTS
 WATER · AIR · WASTES · FOOD · PHARMACEUTICALS · NUTRACEUTICALS

CERTIFICATE OF ANALYSIS

TENNESSEE VALLEY AUTHORITY
 JOSEPH BURKE
 4200 GREENWAY DRIVE
 KNOXVILLE, TN 37918

Date Reported 1/5/2009
 Date Received 1/2/2009
 Cust P.O. CC ON FILE
 Invoice No. 62628
 Cust # T060
 Sample Date 1/2/2009
 Permit No.

Work Order Number: 0901-00014

Subject: KINGSTON FOSSIL PLANT - RIVER SAMPLES

Test	Method	Result	Qual	Date	Time	Tech
------	--------	--------	------	------	------	------

002 **KIF-TRM 568.5-SW-01/02/09 1018 DISSOLVED METALS**

.....continued

BERYLLIUM	EPA 200.7	<0.00005 MG/L		1/5/2009	10:50	JKD
CADMIUM	EPA 200.7	<0.00005 MG/L		1/5/2009	10:50	JKD
COBALT	EPA 200.7	<0.00025 MG/L		1/5/2009	10:50	JKD
CHROMIUM	EPA 200.7	<0.001 MG/L		1/5/2009	10:50	JKD
COPPER	EPA 200.7	0.001 MG/L		1/5/2009	10:50	JKD
IRON	EPA 200.7	0.001 MG/L		1/5/2009	10:50	JKD
MAGNESIUM	EPA 200.7	4.057 MG/L		1/5/2009	10:50	JKD
MANGANESE	EPA 200.7	0.002 MG/L		1/5/2009	10:50	JKD
NICKEL	EPA 200.7	<0.001 MG/L		1/5/2009	10:50	JKD
LEAD	EPA 200.7	<0.001 MG/L		1/5/2009	10:50	JKD
ANTIMONY	EPA 200.7	<0.0005 MG/L		1/5/2009	10:50	JKD
SELENIUM	EPA 200.7	<0.0005 MG/L		1/5/2009	10:50	JKD
THALLIUM	EPA 200.7	<0.0005 MG/L		1/5/2009	10:50	JKD
ZINC	EPA 200.7	0.002 MG/L		1/5/2009	10:50	JKD
BORON	EPA 200.7	0.015 MG/L		1/5/2009	10:50	JKD
TIN	EPA 200.7	<0.0005 MG/L		1/5/2009	10:50	JKD
TITANIUM	EPA 200.7	<0.0001 MG/L		1/5/2009	10:50	JKD
MOLYBDENUM	EPA 200.7	0.0004 MG/L		1/5/2009	10:50	JKD
SILICA (SiO2)	EPA 200.7	4.22 MG/L		1/5/2009	10:50	JKD

003 **KIF-CRM0.0-SW-01/02/09 1106**

SOLIDS, TOTAL SUSPENDED	SM 2540,D.	18.0 MG/L		1/4/2009	11:35	KLD
HARDNESS, TOTAL AS CaCO3	EPA 200.7;2340,B.	111 MG/L		1/5/2009	10:50	JKD
[TAL METALS, ICP]				1/5/2009	10:50	JKD
SILVER	EPA 200.7	<0.005 MG/L		1/5/2009	10:50	JKD
ALUMINUM	EPA 200.7	0.231 MG/L		1/5/2009	10:50	JKD
ARSENIC	EPA 200.7	0.001 MG/L		1/5/2009	10:50	JKD
BARIUM	EPA 200.7	0.037 MG/L		1/5/2009	10:50	JKD
BERYLLIUM	EPA 200.7	0.00006 MG/L		1/5/2009	10:50	JKD
CADMIUM	EPA 200.7	<0.00005 MG/L		1/5/2009	10:50	JKD
COBALT	EPA 200.7	<0.00025 MG/L		1/5/2009	10:50	JKD
CHROMIUM	EPA 200.7	<0.001 MG/L		1/5/2009	10:50	JKD



KNOXVILLE DIVISION
505 EAST BROADWAY AVE.
MARYVILLE, TN 37804
(865) 977-1200 FAX (865) 984-8616
http://www.microbac.com
E-Mail: knoxville@microbac.com

STATE CERT ID.
TN 02017

CHEMISTRY · MICROBIOLOGY · FOOD SAFETY · CONSUMER PRODUCTS
WATER · AIR · WASTES · FOOD · PHARMACEUTICALS · NUTRACEUTICALS

CERTIFICATE OF ANALYSIS

TENNESSEE VALLEY AUTHORITY
JOSEPH BURKE
4200 GREENWAY DRIVE
KNOXVILLE, TN 37918

Date Reported 1/5/2009
Date Received 1/2/2009
Cust P.O. CC ON FILE
Invoice No. 62628
Cust # T060
Sample Date 1/2/2009
Permit No.

Work Order Number: 0901-00014

Subject: KINGSTON FOSSIL PLANT - RIVER SAMPLES

Test Method Result Qual Date Time Tech

003 KIF-CRM0.0-SW-01/02/09 1106

.....continued

Table with 7 columns: Test, Method, Result, Qual, Date, Time, Tech. Rows include COPPER, IRON, MAGNESIUM, MANGANESE, NICKEL, LEAD, ANTIMONY, SELENIUM, THALLIUM, ZINC, BORON, TIN, TITANIUM, MOLYBDENUM, ALKALINITY AS CaCO3.

004 KIF-CRM0.0-SW-01/02/09 1106 DISSOLVED METALS

Table with 7 columns: Test, Method, Result, Qual, Date, Time, Tech. Rows include TAL METALS, ICP, SILVER, ALUMINUM, ARSENIC, BARIUM, BERYLLIUM, CADMIUM, COBALT, CHROMIUM, COPPER, IRON, MAGNESIUM, MANGANESE, NICKEL, LEAD.





KNOXVILLE DIVISION
 505 EAST BROADWAY AVE.
 MARYVILLE, TN 37804
 (865) 977-1200 FAX (865) 984-8616
 http://www.microbac.com
 E-Mail: knoxville@microbac.com

STATE CERT ID.
 TN 02017

CHEMISTRY · MICROBIOLOGY · FOOD SAFETY · CONSUMER PRODUCTS
 WATER · AIR · WASTES · FOOD · PHARMACEUTICALS · NUTRACEUTICALS

CERTIFICATE OF ANALYSIS

TENNESSEE VALLEY AUTHORITY
 JOSEPH BURKE
 4200 GREENWAY DRIVE
 KNOXVILLE, TN 37918

Date Reported 1/5/2009
 Date Received 1/2/2009
 Cust P.O. CC ON FILE
 Invoice No. 62628
 Cust # T060
 Sample Date 1/2/2009
 Permit No.

Work Order Number: 0901-00014

Subject: KINGSTON FOSSIL PLANT - RIVER SAMPLES

Test	Method	Result	Qual	Date	Time	Tech
------	--------	--------	------	------	------	------

004 **KIF-CRM0.0-SW-01/02/09 1106 DISSOLVED METALS**
continued

ANTIMONY	EPA 200.7	<0.0005 MG/L		1/5/2009	10:50	JKD
SELENIUM	EPA 200.7	<0.0005 MG/L		1/5/2009	10:50	JKD
THALLIUM	EPA 200.7	<0.0005 MG/L		1/5/2009	10:50	JKD
ZINC	EPA 200.7	0.001 MG/L		1/5/2009	10:50	JKD
BORON	EPA 200.7	0.016 MG/L		1/5/2009	10:50	JKD
TIN	EPA 200.7	<0.0005 MG/L		1/5/2009	10:50	JKD
TITANIUM	EPA 200.7	<0.0001 MG/L		1/5/2009	10:50	JKD
MOLYBDENUM	EPA 200.7	0.0006 MG/L		1/5/2009	10:50	JKD
SILICA (SiO2)	EPA 200.7	4.13 MG/L		1/5/2009	10:50	JKD

005 **KIF-CRM2.0-SW-01/02/09 1120**

SOLIDS, TOTAL SUSPENDED	SM 2540,D.	14.0 MG/L		1/4/2009	11:35	KLD
HARDNESS, TOTAL AS CaCO3	EPA 200.7;2340,B.	108 MG/L		1/5/2009	10:50	JKD
[TAL METALS, ICP]				1/5/2009	10:50	JKD
SILVER	EPA 200.7	<0.005 MG/L		1/5/2009	10:50	JKD
ALUMINUM	EPA 200.7	0.232 MG/L		1/5/2009	10:50	JKD
ARSENIC	EPA 200.7	0.00095 MG/L		1/5/2009	10:50	JKD
BARIUM	EPA 200.7	0.037 MG/L		1/5/2009	10:50	JKD
BERYLLIUM	EPA 200.7	0.00005 MG/L		1/5/2009	10:50	JKD
CADMIUM	EPA 200.7	0.00005 MG/L		1/5/2009	10:50	JKD
COBALT	EPA 200.7	<0.00025 MG/L		1/5/2009	10:50	JKD
CHROMIUM	EPA 200.7	<0.001 MG/L		1/5/2009	10:50	JKD
COPPER	EPA 200.7	0.002 MG/L		1/5/2009	10:50	JKD
IRON	EPA 200.7	0.2 MG/L		1/5/2009	10:50	JKD
MAGNESIUM	EPA 200.7	7.94 MG/L		1/5/2009	10:50	JKD
MANGANESE	EPA 200.7	0.066 MG/L		1/5/2009	10:50	JKD
NICKEL	EPA 200.7	<0.001 MG/L		1/5/2009	10:50	JKD
LEAD	EPA 200.7	<0.001 MG/L		1/5/2009	10:50	JKD
ANTIMONY	EPA 200.7	<0.0005 MG/L		1/5/2009	10:50	JKD
SELENIUM	EPA 200.7	<0.0005 MG/L		1/5/2009	10:50	JKD
THALLIUM	EPA 200.7	<0.0005 MG/L		1/5/2009	10:50	JKD
ZINC	EPA 200.7	0.0026 MG/L		1/5/2009	10:50	JKD



KNOXVILLE DIVISION
505 EAST BROADWAY AVE.
MARYVILLE, TN 37804
(865) 977-1200 FAX (865) 984-8616
http://www.microbac.com
E-Mail: knoxville@microbac.com

STATE CERT ID.
TN 02017

CHEMISTRY · MICROBIOLOGY · FOOD SAFETY · CONSUMER PRODUCTS
WATER · AIR · WASTES · FOOD · PHARMACEUTICALS · NUTRACEUTICALS

CERTIFICATE OF ANALYSIS

TENNESSEE VALLEY AUTHORITY
JOSEPH BURKE
4200 GREENWAY DRIVE
KNOXVILLE, TN 37918

Date Reported 1/5/2009
Date Received 1/2/2009
Cust P.O. CC ON FILE
Invoice No. 62628
Cust # T060
Sample Date 1/2/2009
Permit No.

Work Order Number: 0901-00014

Subject: KINGSTON FOSSIL PLANT - RIVER SAMPLES

Table with 7 columns: Test, Method, Result, Qual, Date, Time, Tech. Row 005: KIF-CRM2.0-SW-01/02/09 1120, continued.

Table with 7 columns: Test, Method, Result, Qual, Date, Time, Tech. Rows for BORON, TIN, TITANIUM, MOLYBDENUM, ALKALINITY AS CaCO3.

006 KIF-CRM2.0-SW-01/02/09 1120 DISSOLVED METALS

Table with 7 columns: Test, Method, Result, Qual, Date, Time, Tech. Rows for various metals including SILVER, ALUMINUM, ARSENIC, BARIUM, BERYLLIUM, CADMIUM, COBALT, CHROMIUM, COPPER, IRON, MAGNESIUM, MANGANESE, NICKEL, LEAD, ANTIMONY, SELENIUM, THALLIUM, ZINC, BORON, TIN, TITANIUM, MOLYBDENUM, SILICA (SiO2).





KNOXVILLE DIVISION
505 EAST BROADWAY AVE.
MARYVILLE, TN 37804
(865) 977-1200 FAX (865) 984-8616
http://www.microbac.com
E-Mail: knoxville@microbac.com

STATE CERT ID.
TN 02017

CHEMISTRY · MICROBIOLOGY · FOOD SAFETY · CONSUMER PRODUCTS
WATER · AIR · WASTES · FOOD · PHARMACEUTICALS · NUTRACEUTICALS

CERTIFICATE OF ANALYSIS

TENNESSEE VALLEY AUTHORITY
JOSEPH BURKE
4200 GREENWAY DRIVE
KNOXVILLE, TN 37918

Date Reported 1/5/2009
Date Received 1/2/2009
Cust P.O. CC ON FILE
Invoice No. 62628
Cust # T060
Sample Date 1/2/2009
Permit No.

Work Order Number: 0901-00014

Subject: KINGSTON FOSSIL PLANT - RIVER SAMPLES

Test Method Result Qual Date Time Tech

007 KIF-CRM4.0-SW-01/02/09 1135

Table with 7 columns: Test, Method, Result, Qual, Date, Time, Tech. Rows include SOLIDS, TOTAL SUSPENDED; HARDNESS, TOTAL AS CaCO3; [TAL METALS, ICP]; SILVER; ALUMINUM; ARSENIC; BARIUM; BERYLLIUM; CADMIUM; COBALT; CHROMIUM; COPPER; IRON; MAGNESIUM; MANGANESE; NICKEL; LEAD; ANTIMONY; SELENIUM; THALLIUM; ZINC; BORON; TIN; TITANIUM; MOLYBDENUM; ALKALINITY AS CaCO3.

008 KIF-CRM4.0-SW-01/02/09 1135 DISSOLVED METALS

Table with 7 columns: Test, Method, Result, Qual, Date, Time, Tech. Rows include [TAL METALS, ICP]; SILVER; ALUMINUM; ARSENIC; BARIUM.





KNOXVILLE DIVISION
 505 EAST BROADWAY AVE.
 MARYVILLE, TN 37804
 (865) 977-1200 FAX (865) 984-8616
 http://www.microbac.com
 E-Mail: knoxville@microbac.com

STATE CERT ID.
 TN 02017

CHEMISTRY · MICROBIOLOGY · FOOD SAFETY · CONSUMER PRODUCTS
 WATER · AIR · WASTES · FOOD · PHARMACEUTICALS · NUTRACEUTICALS

CERTIFICATE OF ANALYSIS

TENNESSEE VALLEY AUTHORITY
 JOSEPH BURKE
 4200 GREENWAY DRIVE
 KNOXVILLE, TN 37918

Date Reported 1/5/2009
 Date Received 1/2/2009
 Cust P.O. CC ON FILE
 Invoice No. 62628
 Cust # T060
 Sample Date 1/2/2009
 Permit No.

Work Order Number: 0901-00014

Subject: KINGSTON FOSSIL PLANT - RIVER SAMPLES

Test	Method	Result	Qual	Date	Time	Tech
------	--------	--------	------	------	------	------

008 **KIF-CRM4.0-SW-01/02/09 1135 DISSOLVED METALS**
continued

BERYLLIUM	EPA 200.7	<0.00005 MG/L		1/5/2009	10:50	JKD
CADMIUM	EPA 200.7	<0.00005 MG/L		1/5/2009	10:50	JKD
COBALT	EPA 200.7	<0.00025 MG/L		1/5/2009	10:50	JKD
CHROMIUM	EPA 200.7	<0.001 MG/L		1/5/2009	10:50	JKD
COPPER	EPA 200.7	0.00057 MG/L		1/5/2009	10:50	JKD
IRON	EPA 200.7	0.0037 MG/L		1/5/2009	10:50	JKD
MAGNESIUM	EPA 200.7	10.51 MG/L		1/5/2009	10:50	JKD
MANGANESE	EPA 200.7	0.00066 MG/L		1/5/2009	10:50	JKD
NICKEL	EPA 200.7	<0.001 MG/L		1/5/2009	10:50	JKD
LEAD	EPA 200.7	<0.001 MG/L		1/5/2009	10:50	JKD
ANTIMONY	EPA 200.7	<0.0005 MG/L		1/5/2009	10:50	JKD
SELENIUM	EPA 200.7	<0.0005 MG/L		1/5/2009	10:50	JKD
THALLIUM	EPA 200.7	<0.0005 MG/L		1/5/2009	10:50	JKD
ZINC	EPA 200.7	0.0009 MG/L		1/5/2009	10:50	JKD
BORON	EPA 200.7	0.014 MG/L		1/5/2009	10:50	JKD
TIN	EPA 200.7	<0.0005 MG/L		1/5/2009	10:50	JKD
TITANIUM	EPA 200.7	<0.0001 MG/L		1/5/2009	10:50	JKD
MOLYBDENUM	EPA 200.7	0.0005 MG/L		1/5/2009	10:50	JKD
SILICA (SiO2)	EPA 200.7	4.07 MG/L		1/5/2009	10:50	JKD

009 **KIF-CRM5.5-SW-01/02/09 1217**

SOLIDS, TOTAL SUSPENDED	SM 2540,D.	8.00 MG/L		1/4/2009	11:35	KLD
HARDNESS, TOTAL AS CaCO3	EPA 200.7;2340,B.	141 MG/L		1/5/2009	10:50	JKD
[TAL METALS, ICP]				1/5/2009	10:50	JKD
SILVER	EPA 200.7	<0.005 MG/L		1/5/2009	10:50	JKD
ALUMINUM	EPA 200.7	0.106 MG/L		1/5/2009	10:50	JKD
ARSENIC	EPA 200.7	<0.00025 MG/L		1/5/2009	10:50	JKD
BARIUM	EPA 200.7	0.037 MG/L		1/5/2009	10:50	JKD
BERYLLIUM	EPA 200.7	<0.00005 MG/L		1/5/2009	10:50	JKD
CADMIUM	EPA 200.7	<0.00005 MG/L		1/5/2009	10:50	JKD
COBALT	EPA 200.7	<0.00025 MG/L		1/5/2009	10:50	JKD
CHROMIUM	EPA 200.7	<0.001 MG/L		1/5/2009	10:50	JKD



KNOXVILLE DIVISION
 505 EAST BROADWAY AVE.
 MARYVILLE, TN 37804
 (865) 977-1200 FAX (865) 984-8616
 http://www.microbac.com
 E-Mail: knoxville@microbac.com

STATE CERT ID.
 TN 02017

CHEMISTRY · MICROBIOLOGY · FOOD SAFETY · CONSUMER PRODUCTS
 WATER · AIR · WASTES · FOOD · PHARMACEUTICALS · NUTRACEUTICALS

CERTIFICATE OF ANALYSIS

TENNESSEE VALLEY AUTHORITY
 JOSEPH BURKE
 4200 GREENWAY DRIVE
 KNOXVILLE, TN 37918

Date Reported 1/5/2009
 Date Received 1/2/2009
 Cust P.O. CC ON FILE
 Invoice No. 62628
 Cust # T060
 Sample Date 1/2/2009
 Permit No.

Work Order Number: 0901-00014

Subject: KINGSTON FOSSIL PLANT - RIVER SAMPLES

Test	Method	Result	Qual	Date	Time	Tech
------	--------	--------	------	------	------	------

009 **KIF-CRM5.5-SW-01/02/09 1217**

.....continued

COPPER	EPA 200.7	0.00089 MG/L		1/5/2009	10:50	JKD
IRON	EPA 200.7	0.150 MG/L		1/5/2009	10:50	JKD
MAGNESIUM	EPA 200.7	10.65 MG/L		1/5/2009	10:50	JKD
MANGANESE	EPA 200.7	0.039 MG/L		1/5/2009	10:50	JKD
NICKEL	EPA 200.7	<0.001 MG/L		1/5/2009	10:50	JKD
LEAD	EPA 200.7	<0.001 MG/L		1/5/2009	10:50	JKD
ANTIMONY	EPA 200.7	<0.0005 MG/L		1/5/2009	10:50	JKD
SELENIUM	EPA 200.7	<0.0005 MG/L		1/5/2009	10:50	JKD
THALLIUM	EPA 200.7	<0.0005 MG/L		1/5/2009	10:50	JKD
ZINC	EPA 200.7	0.0016 MG/L		1/5/2009	10:50	JKD
BORON	EPA 200.7	0.016 MG/L		1/5/2009	10:50	JKD
TIN	EPA 200.7	<0.0005 MG/L		1/5/2009	10:50	JKD
TITANIUM	EPA 200.7	0.001 MG/L		1/5/2009	10:50	JKD
MOLYBDENUM	EPA 200.7	0.0005 MG/L		1/5/2009	10:50	JKD
ALKALINITY AS CaCO3	SM 2320,B.	115 MG/L		1/4/2009	11:55	KLD

010 **KIF-CRM5.5-SW-01/02/09 1217 DISSOLVED METALS**

[TAL METALS, ICP]				1/5/2009	10:50	JKD
SILVER	EPA 200.7	<0.005 MG/L		1/5/2009	10:50	JKD
ALUMINUM	EPA 200.7	<0.025 MG/L		1/5/2009	10:50	JKD
ARSENIC	EPA 200.7	<0.00025 MG/L		1/5/2009	10:50	JKD
BARIUM	EPA 200.7	0.033 MG/L		1/5/2009	10:50	JKD
BERYLLIUM	EPA 200.7	<0.00005 MG/L		1/5/2009	10:50	JKD
CADMIUM	EPA 200.7	<0.00005 MG/L		1/5/2009	10:50	JKD
COBALT	EPA 200.7	<0.00025 MG/L		1/5/2009	10:50	JKD
CHROMIUM	EPA 200.7	<0.001 MG/L		1/5/2009	10:50	JKD
COPPER	EPA 200.7	0.0006 MG/L		1/5/2009	10:50	JKD
IRON	EPA 200.7	0.0046 MG/L		1/5/2009	10:50	JKD
MAGNESIUM	EPA 200.7	10.5 MG/L		1/5/2009	10:50	JKD
MANGANESE	EPA 200.7	0.0005 MG/L		1/5/2009	10:50	JKD
NICKEL	EPA 200.7	<0.001 MG/L		1/5/2009	10:50	JKD
LEAD	EPA 200.7	<0.001 MG/L		1/5/2009	10:50	JKD



KNOXVILLE DIVISION
505 EAST BROADWAY AVE.
MARYVILLE, TN 37804
(865) 977-1200 FAX (865) 984-8616
http://www.microbac.com
E-Mail: knoxville@microbac.com

STATE CERT ID.
TN 02017

CHEMISTRY · MICROBIOLOGY · FOOD SAFETY · CONSUMER PRODUCTS
WATER · AIR · WASTES · FOOD · PHARMACEUTICALS · NUTRACEUTICALS

CERTIFICATE OF ANALYSIS

TENNESSEE VALLEY AUTHORITY
JOSEPH BURKE
4200 GREENWAY DRIVE
KNOXVILLE, TN 37918

Date Reported 1/5/2009
Date Received 1/2/2009
Cust P.O. CC ON FILE
Invoice No. 62628
Cust # T060
Sample Date 1/2/2009
Permit No.

Work Order Number: 0901-00014

Subject: KINGSTON FOSSIL PLANT - RIVER SAMPLES

Test Method Result Qual Date Time Tech

010 KIF-CRM5.5-SW-01/02/09 1217 DISSOLVED METALS

.....continued

Table with 7 columns: Test, Method, Result, Qual, Date, Time, Tech. Rows include ANTIMONY, SELENIUM, THALLIUM, ZINC, BORON, TIN, TITANIUM, MOLYBDENUM, SILICA (SiO2).

011 KIF-ERM0.1-SW-01/02/09 1100

Table with 7 columns: Test, Method, Result, Qual, Date, Time, Tech. Rows include SOLIDS, TOTAL SUSPENDED, HARDNESS, TOTAL AS CaCO3, [TAL METALS, ICP], SILVER, ALUMINUM, ARSENIC, BARIUM, BERYLLIUM, CADMIUM, COBALT, CHROMIUM, COPPER, IRON, MAGNESIUM, MANGANESE, NICKEL, LEAD, ANTIMONY, SELENIUM, THALLIUM, ZINC.





KNOXVILLE DIVISION
505 EAST BROADWAY AVE.
MARYVILLE, TN 37804
(865) 977-1200 FAX (865) 984-8616
http://www.microbac.com
E-Mail: knoxville@microbac.com

STATE CERT ID.
TN 02017

CHEMISTRY · MICROBIOLOGY · FOOD SAFETY · CONSUMER PRODUCTS
WATER · AIR · WASTES · FOOD · PHARMACEUTICALS · NUTRACEUTICALS

CERTIFICATE OF ANALYSIS

TENNESSEE VALLEY AUTHORITY
JOSEPH BURKE
4200 GREENWAY DRIVE
KNOXVILLE, TN 37918

Date Reported 1/5/2009
Date Received 1/2/2009
Cust P.O. CC ON FILE
Invoice No. 62628
Cust # T060
Sample Date 1/2/2009
Permit No.

Work Order Number: 0901-00014

Subject: KINGSTON FOSSIL PLANT - RIVER SAMPLES

Test Method Result Qual Date Time Tech

011 KIF-ERM0.1-SW-01/02/09 1100

.....continued

Table with 7 columns: Test, Method, Result, Qual, Date, Time, Tech. Rows include BORON, TIN, TITANIUM, MOLYBDENUM, ALKALINITY AS CaCO3.

012 KIF-ERM0.1-SW-01/02/09 1100 DISSOLVED METALS

Table with 7 columns: Test, Method, Result, Qual, Date, Time, Tech. Rows include [TAL METALS, ICP], SILVER, ALUMINUM, ARSENIC, BARIUM, BERYLLIUM, CADMIUM, COBALT, CHROMIUM, COPPER, IRON, MAGNESIUM, MANGANESE, NICKEL, LEAD, ANTIMONY, SELENIUM, THALLIUM, ZINC, BORON, TIN, TITANIUM, MOLYBDENUM, SILICA (SiO2).





KNOXVILLE DIVISION
505 EAST BROADWAY AVE.
MARYVILLE, TN 37804
(865) 977-1200 FAX (865) 984-8616
http://www.microbac.com
E-Mail: knoxville@microbac.com

STATE CERT ID.
TN 02017

CHEMISTRY · MICROBIOLOGY · FOOD SAFETY · CONSUMER PRODUCTS
WATER · AIR · WASTES · FOOD · PHARMACEUTICALS · NUTRACEUTICALS

CERTIFICATE OF ANALYSIS

TENNESSEE VALLEY AUTHORITY
JOSEPH BURKE
4200 GREENWAY DRIVE
KNOXVILLE, TN 37918

Date Reported 1/5/2009
Date Received 1/2/2009
Cust P.O. CC ON FILE
Invoice No. 62628
Cust # T060
Sample Date 1/2/2009
Permit No.

Work Order Number: 0901-00014

Subject: KINGSTON FOSSIL PLANT - RIVER SAMPLES

Table with 7 columns: Test, Method, Result, Qual, Date, Time, Tech. Contains data for various metal tests like SILVER, ALUMINUM, ARSENIC, etc.

014 KIF-ERM1.75-SW-01/02/09 1134 DISSOLVED METALS

Table with 7 columns: Test, Method, Result, Qual, Date, Time, Tech. Contains data for SILVER, ALUMINUM, ARSENIC, BARIUM.





KNOXVILLE DIVISION
 505 EAST BROADWAY AVE.
 MARYVILLE, TN 37804
 (865) 977-1200 FAX (865) 984-8616
 http://www.microbac.com
 E-Mail: knoxville@microbac.com

STATE CERT ID.
 TN 02017

CHEMISTRY · MICROBIOLOGY · FOOD SAFETY · CONSUMER PRODUCTS
 WATER · AIR · WASTES · FOOD · PHARMACEUTICALS · NUTRACEUTICALS

CERTIFICATE OF ANALYSIS

TENNESSEE VALLEY AUTHORITY
 JOSEPH BURKE
 4200 GREENWAY DRIVE
 KNOXVILLE, TN 37918

Date Reported 1/5/2009
 Date Received 1/2/2009
 Cust P.O. CC ON FILE
 Invoice No. 62628
 Cust # T060
 Sample Date 1/2/2009
 Permit No.

Work Order Number: 0901-00014

Subject: KINGSTON FOSSIL PLANT - RIVER SAMPLES

Test	Method	Result	Qual	Date	Time	Tech
------	--------	--------	------	------	------	------

014 **KIF-ERM1.75-SW-01/02/09 1134 DISSOLVED METALS**

.....continued

BERYLLIUM	EPA 200.7	<0.00005 MG/L		1/5/2009	10:50	JKD
CADMIUM	EPA 200.7	<0.00005 MG/L		1/5/2009	10:50	JKD
COBALT	EPA 200.7	<0.00025 MG/L		1/5/2009	10:50	JKD
CHROMIUM	EPA 200.7	<0.001 MG/L		1/5/2009	10:50	JKD
COPPER	EPA 200.7	0.0006 MG/L		1/5/2009	10:50	JKD
IRON	EPA 200.7	0.016 MG/L		1/5/2009	10:50	JKD
MAGNESIUM	EPA 200.7	6.46 MG/L		1/5/2009	10:50	JKD
MANGANESE	EPA 200.7	0.0059 MG/L		1/5/2009	10:50	JKD
NICKEL	EPA 200.7	<0.001 MG/L		1/5/2009	10:50	JKD
LEAD	EPA 200.7	<0.001 MG/L		1/5/2009	10:50	JKD
ANTIMONY	EPA 200.7	<0.0005 MG/L		1/5/2009	10:50	JKD
SELENIUM	EPA 200.7	<0.0005 MG/L		1/5/2009	10:50	JKD
THALLIUM	EPA 200.7	<0.0005 MG/L		1/5/2009	10:50	JKD
ZINC	EPA 200.7	0.00094 MG/L		1/5/2009	10:50	JKD
BORON	EPA 200.7	0.0129 MG/L		1/5/2009	10:50	JKD
TIN	EPA 200.7	<0.0005 MG/L		1/5/2009	10:50	JKD
TITANIUM	EPA 200.7	<0.0001 MG/L		1/5/2009	10:50	JKD
MOLYBDENUM	EPA 200.7	0.0004 MG/L		1/5/2009	10:50	JKD
SILICA (SiO2)	EPA 200.7	4.09 MG/L		1/5/2009	10:50	JKD

015 **KIF-ERM2.1-SW-01/02/09 1150**

SOLIDS, TOTAL SUSPENDED	SM 2540,D.	22.0 MG/L		1/4/2009	11:35	KLD
HARDNESS, TOTAL AS CaCO3	EPA 200.7;2340,B.	26.1 MG/L		1/5/2009	10:50	JKD
[TAL METALS, ICP]				1/5/2009	10:50	JKD
SILVER	EPA 200.7	<0.005 MG/L		1/5/2009	10:50	JKD
ALUMINUM	EPA 200.7	0.212 MG/L		1/5/2009	10:50	JKD
ARSENIC	EPA 200.7	0.0006 MG/L		1/5/2009	10:50	JKD
BARIUM	EPA 200.7	0.030 MG/L		1/5/2009	10:50	JKD
BERYLLIUM	EPA 200.7	<0.00005 MG/L		1/5/2009	10:50	JKD
CADMIUM	EPA 200.7	<0.00005 MG/L		1/5/2009	10:50	JKD
COBALT	EPA 200.7	0.00028 MG/L		1/5/2009	10:50	JKD
CHROMIUM	EPA 200.7	<0.001 MG/L		1/5/2009	10:50	JKD



KNOXVILLE DIVISION
 505 EAST BROADWAY AVE.
 MARYVILLE, TN 37804
 (865) 977-1200 FAX (865) 984-8616
 http://www.microbac.com
 E-Mail: knoxville@microbac.com

STATE CERT ID.
 TN 02017

CHEMISTRY · MICROBIOLOGY · FOOD SAFETY · CONSUMER PRODUCTS
 WATER · AIR · WASTES · FOOD · PHARMACEUTICALS · NUTRACEUTICALS

CERTIFICATE OF ANALYSIS

TENNESSEE VALLEY AUTHORITY
 JOSEPH BURKE
 4200 GREENWAY DRIVE
 KNOXVILLE, TN 37918

Date Reported 1/5/2009
 Date Received 1/2/2009
 Cust P.O. CC ON FILE
 Invoice No. 62628
 Cust # T060
 Sample Date 1/2/2009
 Permit No.

Work Order Number: 0901-00014

Subject: KINGSTON FOSSIL PLANT - RIVER SAMPLES

Test	Method	Result	Qual	Date	Time	Tech
------	--------	--------	------	------	------	------

015 **KIF-ERM2.1-SW-01/02/09 1150**

.....continued

COPPER	EPA 200.7	0.00083 MG/L		1/5/2009	10:50	JKD
IRON	EPA 200.7	0.242 MG/L		1/5/2009	10:50	JKD
MAGNESIUM	EPA 200.7	1.61 MG/L		1/5/2009	10:50	JKD
MANGANESE	EPA 200.7	0.047 MG/L		1/5/2009	10:50	JKD
NICKEL	EPA 200.7	0.001 MG/L		1/5/2009	10:50	JKD
LEAD	EPA 200.7	<0.001 MG/L		1/5/2009	10:50	JKD
ANTIMONY	EPA 200.7	<0.00005 MG/L		1/5/2009	10:50	JKD
SELENIUM	EPA 200.7	<0.00005 MG/L		1/5/2009	10:50	JKD
THALLIUM	EPA 200.7	<0.00005 MG/L		1/5/2009	10:50	JKD
ZINC	EPA 200.7	0.0037 MG/L		1/5/2009	10:50	JKD
BORON	EPA 200.7	0.01 MG/L		1/5/2009	10:50	JKD
TIN	EPA 200.7	<0.0005 MG/L		1/5/2009	10:50	JKD
TITANIUM	EPA 200.7	0.0056 MG/L		1/5/2009	10:50	JKD
MOLYBDENUM	EPA 200.7	0.00009 MG/L		1/5/2009	10:50	JKD
ALKALINITY AS CaCO3	SM 2320,B.	16.0 MG/L		1/4/2009	11:55	KLD

016 **KIF-ERM2.1-SW-01/02/09 1150 DISSOLVED METALS**

[TAL METALS, ICP]				1/5/2009	10:50	JKD
SILVER	EPA 200.7	<0.005 MG/L		1/5/2009	10:50	JKD
ALUMINUM	EPA 200.7	<0.025 MG/L		1/5/2009	10:50	JKD
ARSENIC	EPA 200.7	<0.00025 MG/L		1/5/2009	10:50	JKD
BARIUM	EPA 200.7	0.029 MG/L		1/5/2009	10:50	JKD
BERYLLIUM	EPA 200.7	<0.00005 MG/L		1/5/2009	10:50	JKD
CADMIUM	EPA 200.7	<0.00005 MG/L		1/5/2009	10:50	JKD
COBALT	EPA 200.7	<0.00025 MG/L		1/5/2009	10:50	JKD
CHROMIUM	EPA 200.7	<0.001 MG/L		1/5/2009	10:50	JKD
COPPER	EPA 200.7	0.00083 MG/L		1/5/2009	10:50	JKD
IRON	EPA 200.7	0.035 MG/L		1/5/2009	10:50	JKD
MAGNESIUM	EPA 200.7	1.593 MG/L		1/5/2009	10:50	JKD
MANGANESE	EPA 200.7	0.0289 MG/L		1/5/2009	10:50	JKD
NICKEL	EPA 200.7	<0.001 MG/L		1/5/2009	10:50	JKD
LEAD	EPA 200.7	<0.001 MG/L		1/5/2009	10:50	JKD



KNOXVILLE DIVISION
505 EAST BROADWAY AVE.
MARYVILLE, TN 37804
(865) 977-1200 FAX (865) 984-8616
http://www.microbac.com
E-Mail: knoxville@microbac.com

STATE CERT ID.
TN 02017

CHEMISTRY · MICROBIOLOGY · FOOD SAFETY · CONSUMER PRODUCTS
WATER · AIR · WASTES · FOOD · PHARMACEUTICALS · NUTRACEUTICALS

CERTIFICATE OF ANALYSIS

TENNESSEE VALLEY AUTHORITY
JOSEPH BURKE
4200 GREENWAY DRIVE
KNOXVILLE, TN 37918

Date Reported 1/5/2009
Date Received 1/2/2009
Cust P.O. CC ON FILE
Invoice No. 62628
Cust # T060
Sample Date 1/2/2009
Permit No.

Work Order Number: 0901-00014

Subject: KINGSTON FOSSIL PLANT - RIVER SAMPLES

Test Method Result Qual Date Time Tech

016 KIF-ERM2.1-SW-01/02/09 1150 DISSOLVED METALS

.....continued

Table with 7 columns: Test, Method, Result, Qual, Date, Time, Tech. Rows include Antimony, Selenium, Thallium, Zinc, Boron, Tin, Titanium, Molybdenum, and Silica.

017 KIF-ERM2.1-SW-D-01/02/09 1153

Table with 7 columns: Test, Method, Result, Qual, Date, Time, Tech. Rows include Solids, Hardness, and various metals like Silver, Aluminum, Arsenic, Barium, Beryllium, Cadmium, Cobalt, Chromium, Copper, Iron, Magnesium, Manganese, Nickel, Lead, Antimony, Selenium, Thallium, and Zinc.





KNOXVILLE DIVISION
505 EAST BROADWAY AVE.
MARYVILLE, TN 37804
(865) 977-1200 FAX (865) 984-8616
http://www.microbac.com
E-Mail: knoxville@microbac.com

STATE CERT ID.
TN 02017

CHEMISTRY · MICROBIOLOGY · FOOD SAFETY · CONSUMER PRODUCTS
WATER · AIR · WASTES · FOOD · PHARMACEUTICALS · NUTRACEUTICALS

CERTIFICATE OF ANALYSIS

TENNESSEE VALLEY AUTHORITY
JOSEPH BURKE
4200 GREENWAY DRIVE
KNOXVILLE, TN 37918

Date Reported 1/5/2009
Date Received 1/2/2009
Cust P.O. CC ON FILE
Invoice No. 62628
Cust # T060
Sample Date 1/2/2009
Permit No.

Work Order Number: 0901-00014

Subject: KINGSTON FOSSIL PLANT - RIVER SAMPLES

Table with 7 columns: Test, Method, Result, Qual, Date, Time, Tech. Row 017: KIF-ERM2.1-SW-D-01/02/09 1153

Table with 7 columns: Test, Method, Result, Qual, Date, Time, Tech. Rows for BORON, TIN, TITANIUM, MOLYBDENUM, ALKALINITY AS CaCO3

018 KIF-ERM2.1-SW-D-01/02/09 1153 DISSOLVED METALS

Table with 7 columns: Test, Method, Result, Qual, Date, Time, Tech. Rows for [TAL METALS, ICP], SILVER, ALUMINUM, ARSENIC, BARIUM, BERYLLIUM, CADMIUM, COBALT, CHROMIUM, COPPER, IRON, MAGNESIUM, MANGANESE, NICKEL, LEAD, ANTIMONY, SELENIUM, THALLIUM, ZINC, BORON, TIN, TITANIUM, MOLYBDENUM, SILICA (SiO2)





KNOXVILLE DIVISION
505 EAST BROADWAY AVE.
MARYVILLE, TN 37804
(865) 977-1200 FAX (865) 984-8616
http://www.microbac.com
E-Mail: knoxville@microbac.com

STATE CERT ID.
TN 02017

CHEMISTRY · MICROBIOLOGY · FOOD SAFETY · CONSUMER PRODUCTS
WATER · AIR · WASTES · FOOD · PHARMACEUTICALS · NUTRACEUTICALS

CERTIFICATE OF ANALYSIS

TENNESSEE VALLEY AUTHORITY
JOSEPH BURKE
4200 GREENWAY DRIVE
KNOXVILLE, TN 37918

Date Reported 1/5/2009
Date Received 1/2/2009
Cust P.O. CC ON FILE
Invoice No. 62628
Cust # T060
Sample Date 1/2/2009
Permit No.

Work Order Number: 0901-00014

Subject: KINGSTON FOSSIL PLANT - RIVER SAMPLES

Test Method Result Qual Date Time Tech

019 KIF-ERM4.0-SW-01/02/09 1221

Table with 7 columns: Test, Method, Result, Qual, Date, Time, Tech. Rows include SOLIDS, TOTAL SUSPENDED; HARDNESS, TOTAL AS CaCO3; [TAL METALS, ICP]; SILVER; ALUMINUM; ARSENIC; BARIUM; BERYLLIUM; CADMIUM; COBALT; CHROMIUM; COPPER; IRON; MAGNESIUM; MANGANESE; NICKEL; LEAD; ANTIMONY; SELENIUM; THALLIUM; ZINC; BORON; TIN; TITANIUM; MOLYBDENUM; ALKALINITY AS CaCO3.

020 KIF-ERM4.0-SW-01/02/09 1221 DISSOLVED METALS

Table with 7 columns: Test, Method, Result, Qual, Date, Time, Tech. Rows include [TAL METALS, ICP]; SILVER; ALUMINUM; ARSENIC; BARIUM.





KNOXVILLE DIVISION
 505 EAST BROADWAY AVE.
 MARYVILLE, TN 37804
 (865) 977-1200 FAX (865) 984-8616
 http://www.microbac.com
 E-Mail: knoxville@microbac.com

STATE CERT ID.
 TN 02017

CHEMISTRY · MICROBIOLOGY · FOOD SAFETY · CONSUMER PRODUCTS
 WATER · AIR · WASTES · FOOD · PHARMACEUTICALS · NUTRACEUTICALS

CERTIFICATE OF ANALYSIS

TENNESSEE VALLEY AUTHORITY
 JOSEPH BURKE
 4200 GREENWAY DRIVE
 KNOXVILLE, TN 37918

Date Reported 1/5/2009
 Date Received 1/2/2009
 Cust P.O. CC ON FILE
 Invoice No. 62628
 Cust # T060
 Sample Date 1/2/2009
 Permit No.

Work Order Number: 0901-00014

Subject: KINGSTON FOSSIL PLANT - RIVER SAMPLES

Test	Method	Result	Qual	Date	Time	Tech
------	--------	--------	------	------	------	------

020 **KIF-ERM4.0-SW-01/02/09 1221 DISSOLVED METALS**

.....continued

BERYLLIUM	EPA 200.7	<0.00005 MG/L		1/5/2009	10:50	JKD
CADMIUM	EPA 200.7	<0.00005 MG/L		1/5/2009	10:50	JKD
COBALT	EPA 200.7	<0.00025 MG/L		1/5/2009	10:50	JKD
CHROMIUM	EPA 200.7	<0.001 MG/L		1/5/2009	10:50	JKD
COPPER	EPA 200.7	<0.0005 MG/L		1/5/2009	10:50	JKD
IRON	EPA 200.7	0.022 MG/L		1/5/2009	10:50	JKD
MAGNESIUM	EPA 200.7	1.84 MG/L		1/5/2009	10:50	JKD
MANGANESE	EPA 200.7	0.030 MG/L		1/5/2009	10:50	JKD
NICKEL	EPA 200.7	<0.001 MG/L		1/5/2009	10:50	JKD
LEAD	EPA 200.7	<0.001 MG/L		1/5/2009	10:50	JKD
ANTIMONY	EPA 200.7	<0.0005 MG/L		1/5/2009	10:50	JKD
SELENIUM	EPA 200.7	<0.0005 MG/L		1/5/2009	10:50	JKD
THALLIUM	EPA 200.7	<0.0005 MG/L		1/5/2009	10:50	JKD
ZINC	EPA 200.7	0.0009 MG/L		1/5/2009	10:50	JKD
BORON	EPA 200.7	<0.01 MG/L		1/5/2009	10:50	JKD
TIN	EPA 200.7	<0.0005 MG/L		1/5/2009	10:50	JKD
TITANIUM	EPA 200.7	<0.0001 MG/L		1/5/2009	10:50	JKD
MOLYBDENUM	EPA 200.7	<0.00005 MG/L		1/5/2009	10:50	JKD
SILICA (SiO2)	EPA 200.7	4.24 MG/L		1/5/2009	10:50	JKD

021 **KIF-BB-DOSED-01/02/09 0910**

HARDNESS, TOTAL AS CaCO3	EPA 200.7;2340,B.	2.03 MG/L		1/5/2009	10:50	JKD
[TAL METALS, ICP]				1/5/2009	10:50	JKD
SILVER	EPA 200.7	<0.005 MG/L		1/5/2009	10:50	JKD
ALUMINUM	EPA 200.7	<0.025 MG/L		1/5/2009	10:50	JKD
ARSENIC	EPA 200.7	<0.00025 MG/L		1/5/2009	10:50	JKD
BARIUM	EPA 200.7	<0.01 MG/L		1/5/2009	10:50	JKD
BERYLLIUM	EPA 200.7	<0.00005 MG/L		1/5/2009	10:50	JKD
CADMIUM	EPA 200.7	<0.00005 MG/L		1/5/2009	10:50	JKD
COBALT	EPA 200.7	<0.00025 MG/L		1/5/2009	10:50	JKD
CHROMIUM	EPA 200.7	<0.001 MG/L		1/5/2009	10:50	JKD
COPPER	EPA 200.7	<0.0005 MG/L		1/5/2009	10:50	JKD





KNOXVILLE DIVISION
 505 EAST BROADWAY AVE.
 MARYVILLE, TN 37804
 (865) 977-1200 FAX (865) 984-8616
 http://www.microbac.com
 E-Mail: knoxville@microbac.com

STATE CERT ID.
 TN 02017

CHEMISTRY · MICROBIOLOGY · FOOD SAFETY · CONSUMER PRODUCTS
 WATER · AIR · WASTES · FOOD · PHARMACEUTICALS · NUTRACEUTICALS

CERTIFICATE OF ANALYSIS

TENNESSEE VALLEY AUTHORITY
 JOSEPH BURKE
 4200 GREENWAY DRIVE
 KNOXVILLE, TN 37918

Date Reported 1/5/2009
 Date Received 1/2/2009
 Cust P.O. CC ON FILE
 Invoice No. 62628
 Cust # T060
 Sample Date 1/2/2009
 Permit No.

Work Order Number: 0901-00014

Subject: KINGSTON FOSSIL PLANT - RIVER SAMPLES

Test	Method	Result	Qual	Date	Time	Tech
------	--------	--------	------	------	------	------

021 **KIF-BB-DOSED-01/02/09 0910**

.....continued

IRON	EPA 200.7	<0.001 MG/L		1/5/2009	10:50	JKD
MAGNESIUM	EPA 200.7	<0.05 MG/L		1/5/2009	10:50	JKD
MANGANESE	EPA 200.7	0.002 MG/L		1/5/2009	10:50	JKD
NICKEL	EPA 200.7	<0.001 MG/L		1/5/2009	10:50	JKD
LEAD	EPA 200.7	<0.001 MG/L		1/5/2009	10:50	JKD
ANTIMONY	EPA 200.7	<0.0005 MG/L		1/5/2009	10:50	JKD
SELENIUM	EPA 200.7	<0.0005 MG/L		1/5/2009	10:50	JKD
THALLIUM	EPA 200.7	<0.0005 MG/L		1/5/2009	10:50	JKD
ZINC	EPA 200.7	0.002 MG/L		1/5/2009	10:50	JKD
BORON	EPA 200.7	<0.01 MG/L		1/5/2009	10:50	JKD
TIN	EPA 200.7	<0.0005 MG/L		1/5/2009	10:50	JKD
TITANIUM	EPA 200.7	<0.0001 MG/L		1/5/2009	10:50	JKD
MOLYBDENUM	EPA 200.7	<0.00005 MG/L		1/5/2009	10:50	JKD
ALKALINITY AS CaCO3	SM 2320,B.	<0.25 MG/L		1/4/2009	11:55	KLD

022 **KIF-BB-UNDOSED-01/02/09 0910 DISSOLVED METALS**

SOLIDS, TOTAL SUSPENDED	SM 2540,D.	4.00 MG/L		1/4/2009	11:35	KLD
HARDNESS, TOTAL AS CaCO3	EPA 200.7;2340,B.	3.46 MG/L		1/5/2009	10:50	JKD
[TAL METALS, ICP]				1/5/2009	10:50	JKD
SILVER	EPA 200.7	<0.005 MG/L		1/5/2009	10:50	JKD
ALUMINUM	EPA 200.7	<0.025 MG/L		1/5/2009	10:50	JKD
ARSENIC	EPA 200.7	<0.00025 MG/L		1/5/2009	10:50	JKD
BARIIUM	EPA 200.7	<0.01 MG/L		1/5/2009	10:50	JKD
BERYLLIUM	EPA 200.7	<0.00005 MG/L		1/5/2009	10:50	JKD
CADMIUM	EPA 200.7	<0.00005 MG/L		1/5/2009	10:50	JKD
COBALT	EPA 200.7	<0.00025 MG/L		1/5/2009	10:50	JKD
CHROMIUM	EPA 200.7	<0.001 MG/L		1/5/2009	10:50	JKD
COPPER	EPA 200.7	<0.0005 MG/L		1/5/2009	10:50	JKD
IRON	EPA 200.7	<0.0025 MG/L		1/5/2009	10:50	JKD
MAGNESIUM	EPA 200.7	<0.05 MG/L		1/5/2009	10:50	JKD
MANGANESE	EPA 200.7	0.001 MG/L		1/5/2009	10:50	JKD
NICKEL	EPA 200.7	<0.001 MG/L		1/5/2009	10:50	JKD



KNOXVILLE DIVISION
505 EAST BROADWAY AVE.
MARYVILLE, TN 37804
(865) 977-1200 FAX (865) 984-8616
http://www.microbac.com
E-Mail: knoxville@microbac.com

STATE CERT ID.

TN 02017

CHEMISTRY · MICROBIOLOGY · FOOD SAFETY · CONSUMER PRODUCTS
WATER · AIR · WASTES · FOOD · PHARMACEUTICALS · NUTRACEUTICALS

CERTIFICATE OF ANALYSIS

TENNESSEE VALLEY AUTHORITY
JOSEPH BURKE
4200 GREENWAY DRIVE
KNOXVILLE, TN 37918

Date Reported 1/5/2009
Date Received 1/2/2009
Cust P.O. CC ON FILE
Invoice No. 62628
Cust # T060
Sample Date 1/2/2009
Permit No.

Work Order Number: 0901-00014

Subject: KINGSTON FOSSIL PLANT - RIVER SAMPLES

Test Method Result Qual Date Time Tech

022 KIF-BB-UNDOSED-01/02/09 0910 DISSOLVED METALS

.....continued

Table with 7 columns: Test, Method, Result, Qual, Date, Time, Tech. Rows include LEAD, ANTIMONY, SELENIUM, THALLIUM, ZINC, BORON, TIN, TITANIUM, MOLYBDENUM, and ALKALINITY AS CaCO3.

RESPECTFULLY SUBMITTED: _____

MICROBAC LABORATORIES, INC.

Thank you for your business. We invite your feedback on our level of service to you. Please contact the Laboratory Director, James Nokes, at 865-977-1200, the COO, Robert Morgan, at rmorgan@microbac.com or the CEO, Trevor Boyce, at tboyce@microbac.com with any comments or suggestions.





KNOXVILLE DIVISION
505 EAST BROADWAY AVE.
MARYVILLE, TN 37804
(865) 977-1200 FAX (865) 984-8616
http://www.microbac.com
E-Mail: knoxville@microbac.com

STATE CERT ID.
TN 02017

CHEMISTRY · MICROBIOLOGY · FOOD SAFETY · CONSUMER PRODUCTS
WATER · AIR · WASTES · FOOD · PHARMACEUTICALS · NUTRACEUTICALS

CERTIFICATE OF ANALYSIS

TENNESSEE VALLEY AUTHORITY
JOSEPH BURKE
4200 GREENWAY DRIVE
KNOXVILLE, TN 37918

Date Reported 1/5/2009
Date Received 1/2/2009
Cust P.O. CC ON FILE
Invoice No. 62628
Cust # T060
Sample Date 1/2/2009
Permit No.

Work Order Number: 0901-00014

Subject: KINGSTON FOSSIL PLANT - RIVER SAMPLES

Table with 7 columns: Test, Method, Result, Qual, Date, Time, Tech

As regulatory limits change frequently, Microbac advises the recipient of this report to confirm such limits with the appropriate Federal, state, or local authorities before acting in reliance on the regulatory limits provided.

Microbac Laboratories, Inc. cannot guarantee the confidentiality of any facsimile or e-mail transmittal. The information in this communication is intended for the exclusive use of the addressee. If you are not the intended recipient, you are notified that any disclosure, copying, distributing, or the taking of any action in reliance on the contents of this information is strictly prohibited. If you received this transmission in error, please notify us immediately.

QUALIFIER DEFINITIONS:

- B = Detected in the associated Method Blank
C = As Tons CaCO3, equivalent per 1,000 tons material
D = Surrogate recoveries not calculated due to matrix interference and resulting sample dilution
E1 = Elevated detection limits due to sample matrix interference
E2 = Elevated detection limits due to high analyte concentration
H = Analyte was prepared and/or analyzed outside of the analytical method holding time
I = Spike recovery outside control limits due to sample matrix interference or high analyte concentration
J1 = Value below quantitation range
J2 = Value above quantitation range
K = Inter-element correction applied due to high concentration of non-target analyte
L1 = Liquid portion of dual phase sample analyzed only
L2 = Solid portion of dual phase sample analyzed only
M = Miscellaneous (see entry below analytical results)
P = Sample received improperly preserved
R = Relative Percent Duplicate (RPD) outside accepted recovery limits
S1 = Spike recovery outside recovery limits
S2 = Surrogate recovery outside of control limits. The data was accepted based on the valid recovery of remaining surrogate.
U = Undetected
V = Elevated reporting limits due to insufficient sample volume
W = Results reports on dry weight basis

ABBREVIATIONS:

- TNTC = Too Numerous To Count
MG/KG = Milligrams per Kilogram (PPM)
UG/L = Micrograms per Liter (PPB)
CFU = Colony Forming Unit
UG/KG = Micrograms per Kilogram (PPB)
ND = Not Detected at or below the reporting limit
MG/L = Milligrams per Liter (PPM)
TIC = Tentatively Identified Compound
Positive = Bacteria or target analyte detected
Negative = Bacteria or target analyte not detected

