

Commercial spiny lobster fishery

1897-2003

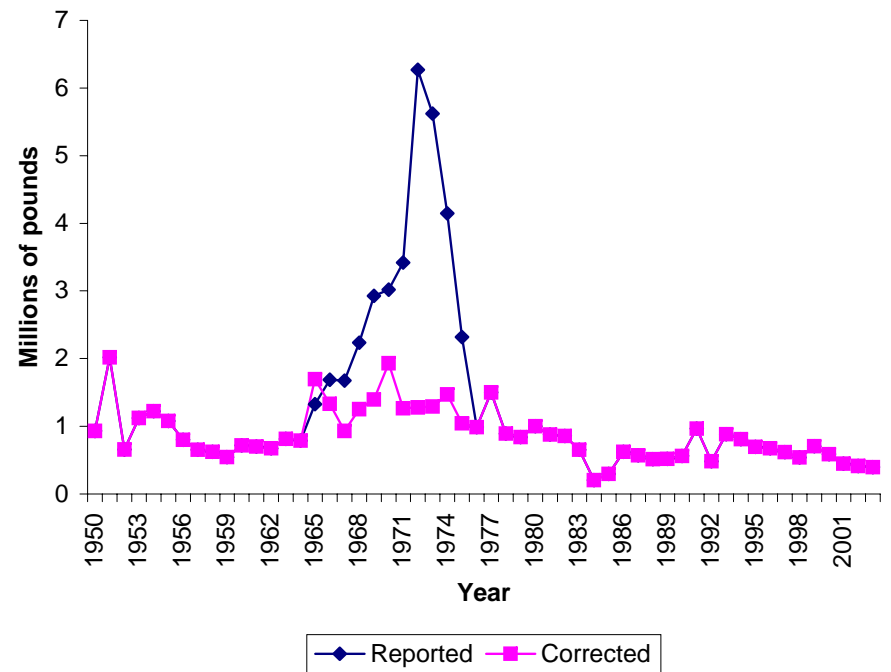
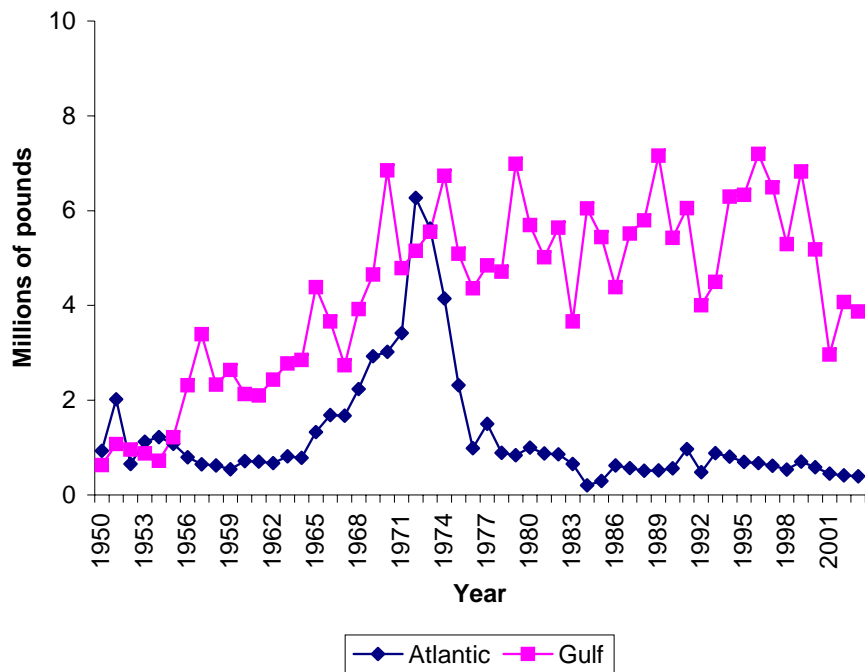
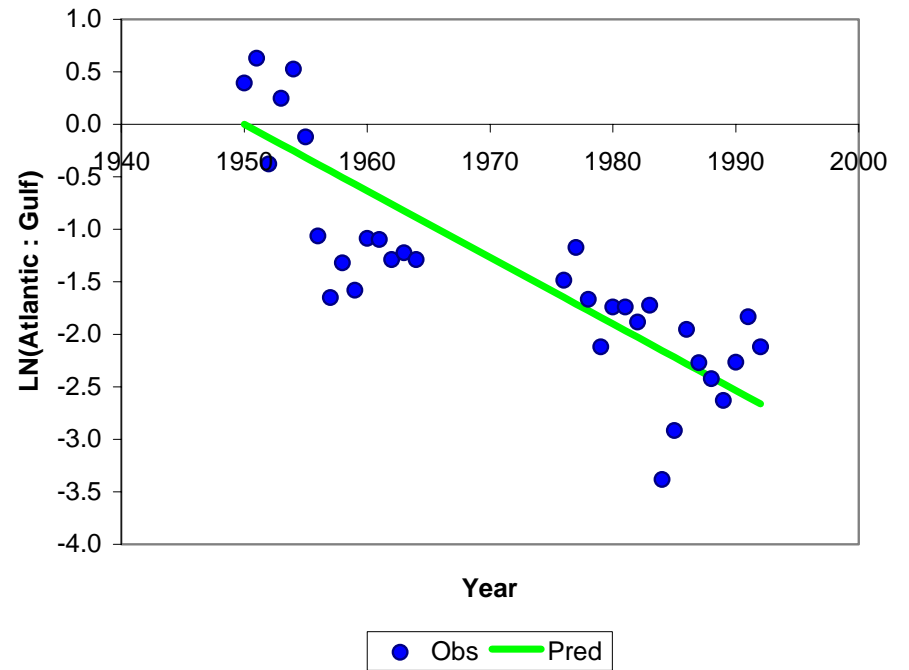
Florida Fish and Wildlife Conservation Commission
Fish and Wildlife Research Institute

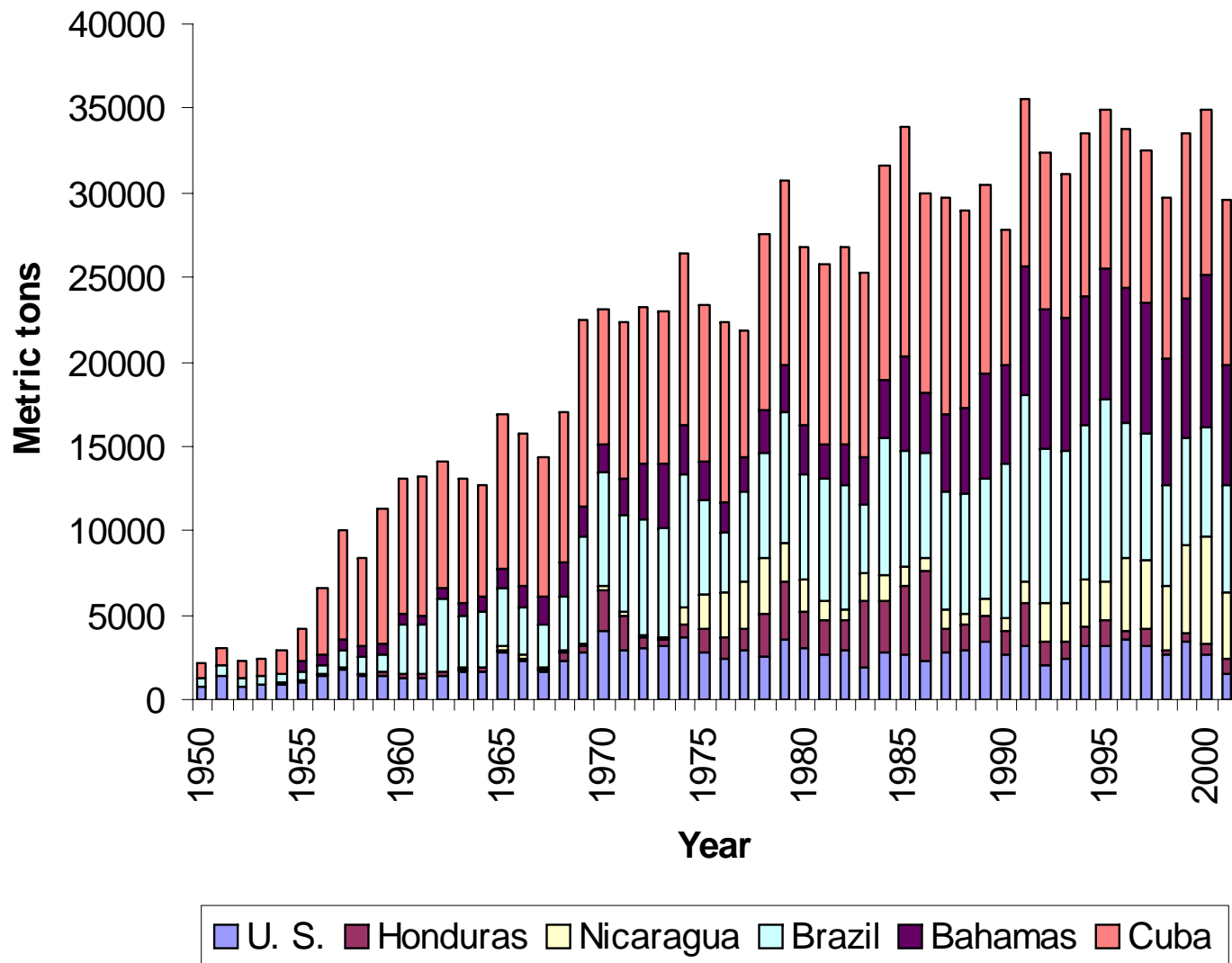


Outline

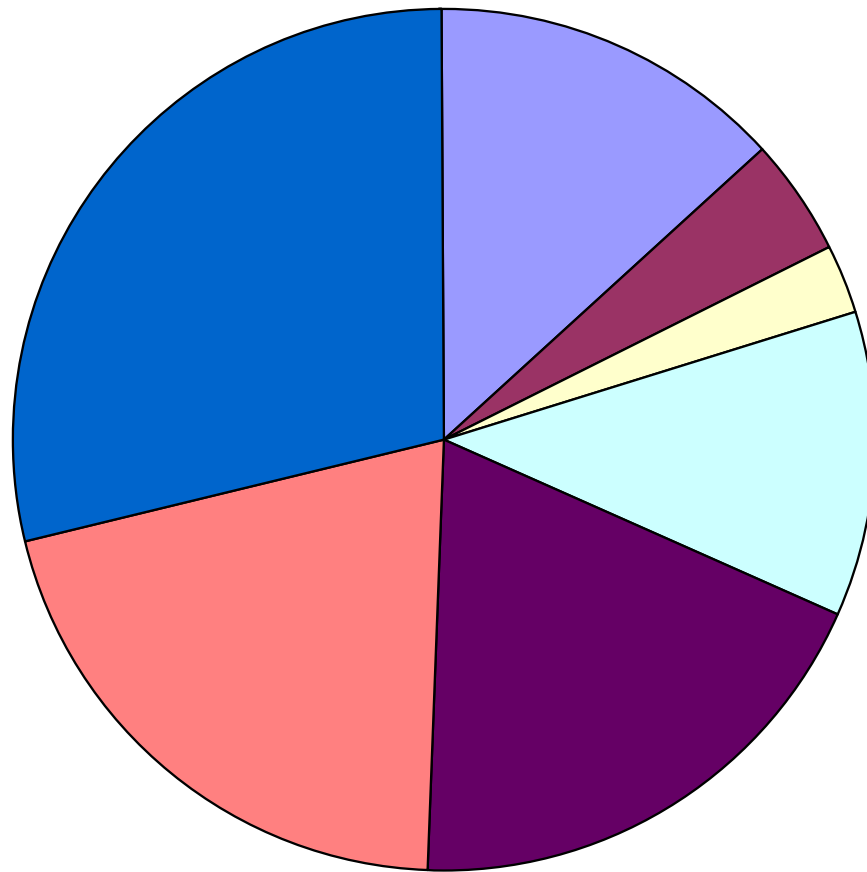
- Adjusting the Bahamian landings
- Caribbean landings by country
- U. S. historical landings
- U. S. Landings by fishing year
- U. S. Landings by gear
- Commercial catch rates
- Sizes of commercially harvested lobsters

Adjusting the Florida Atlantic coast landings from 1965-1977



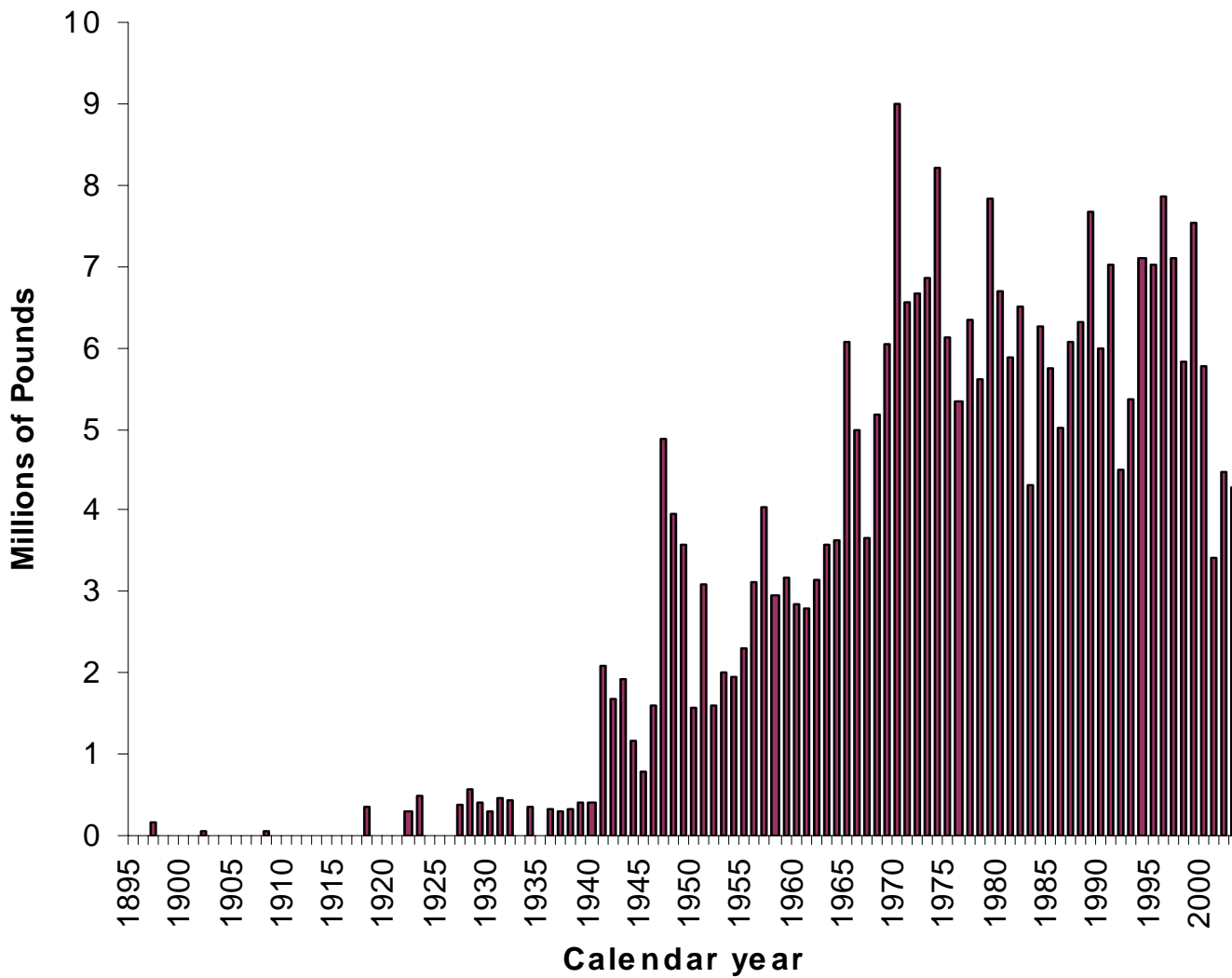


Annual landings by major lobster producing countries in Caribbean (FAO Western Atlantic)

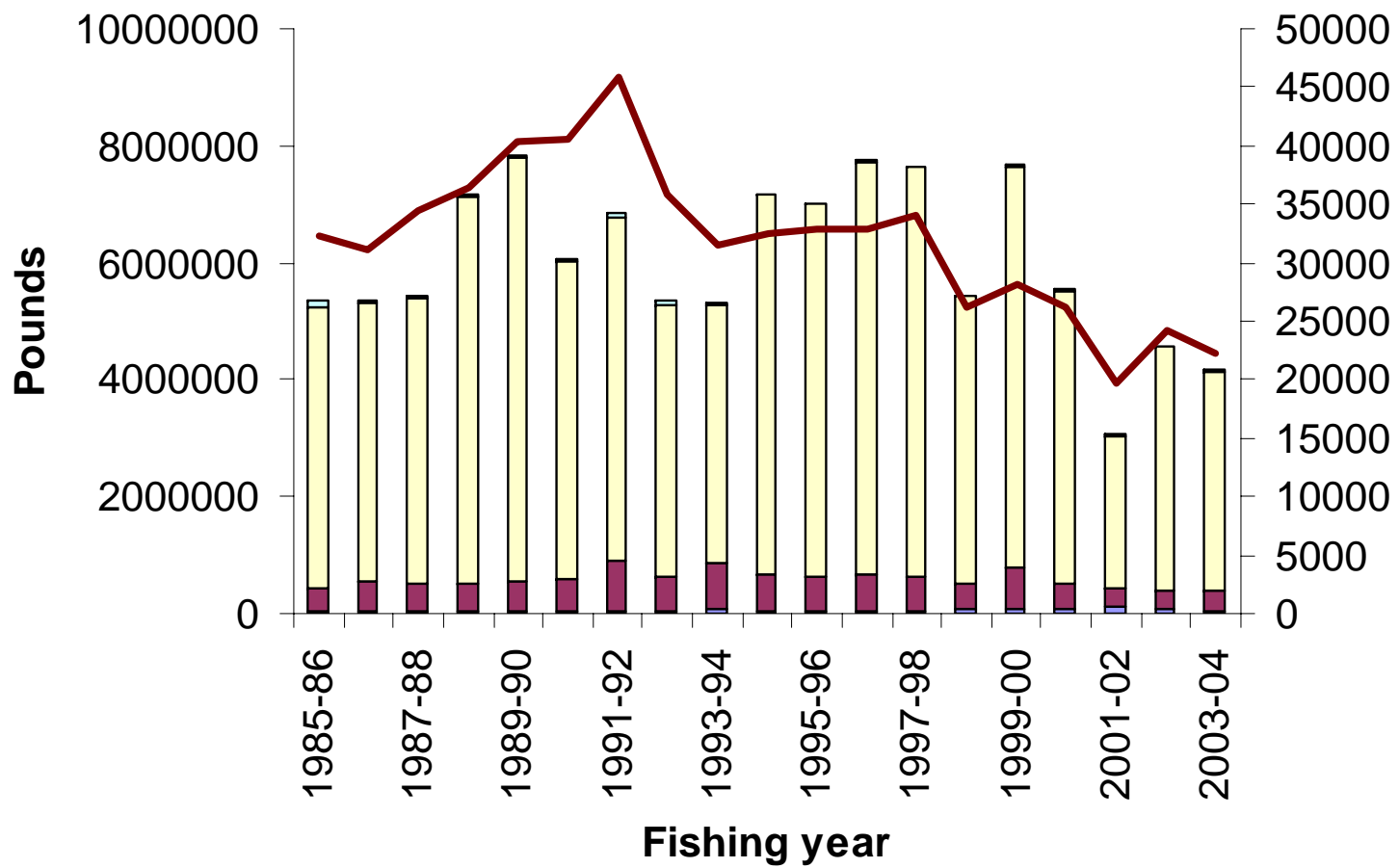


Other United States Honduras Nicaragua Brazil Bahamas Cuba

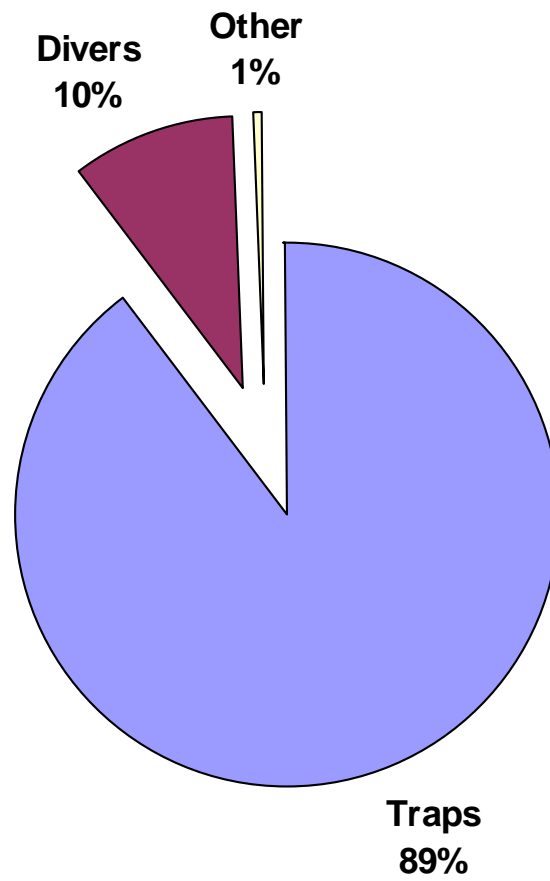
2001 landings of spiny lobsters by major producing countries



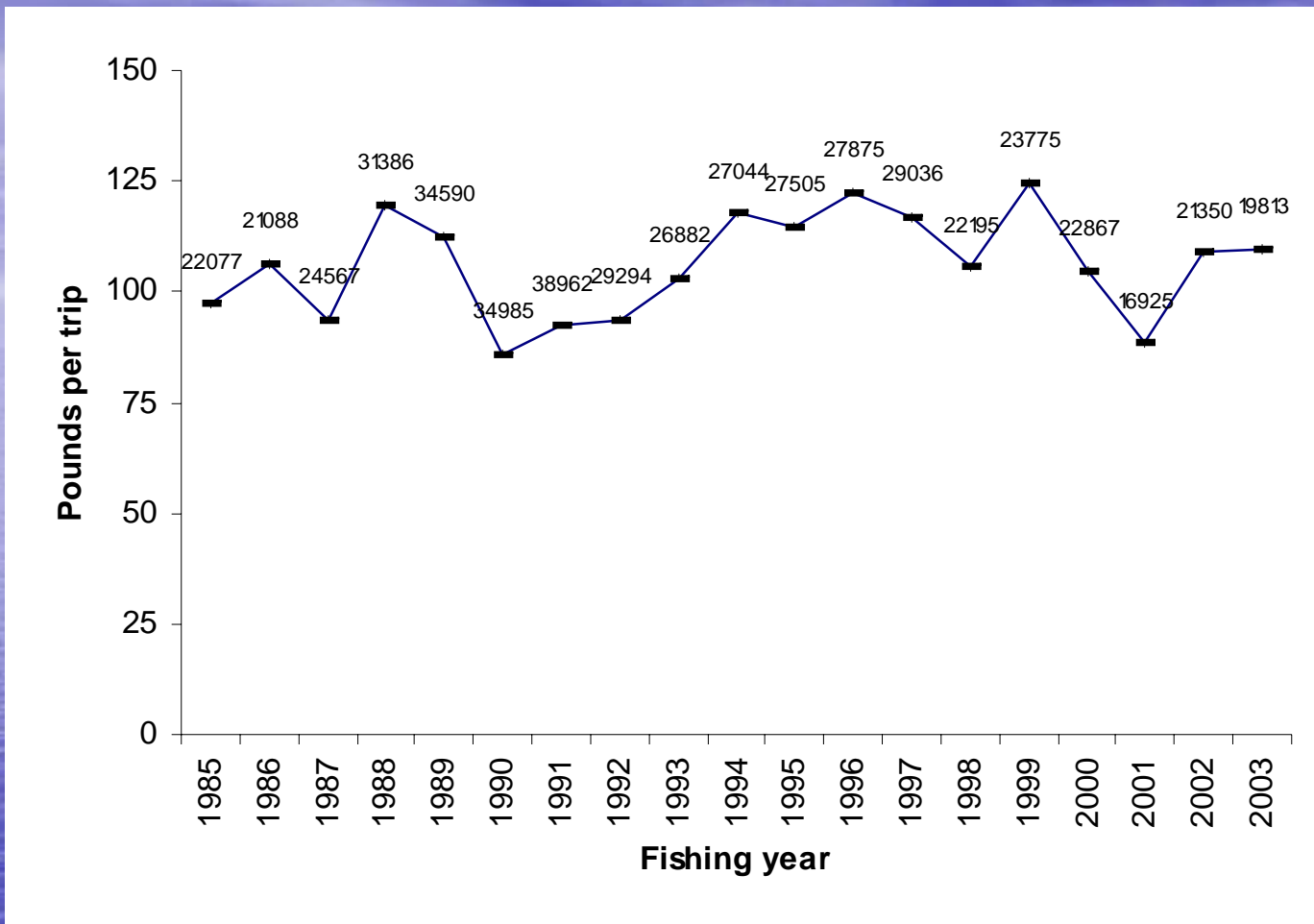
U. S. commercial landings of spiny lobster



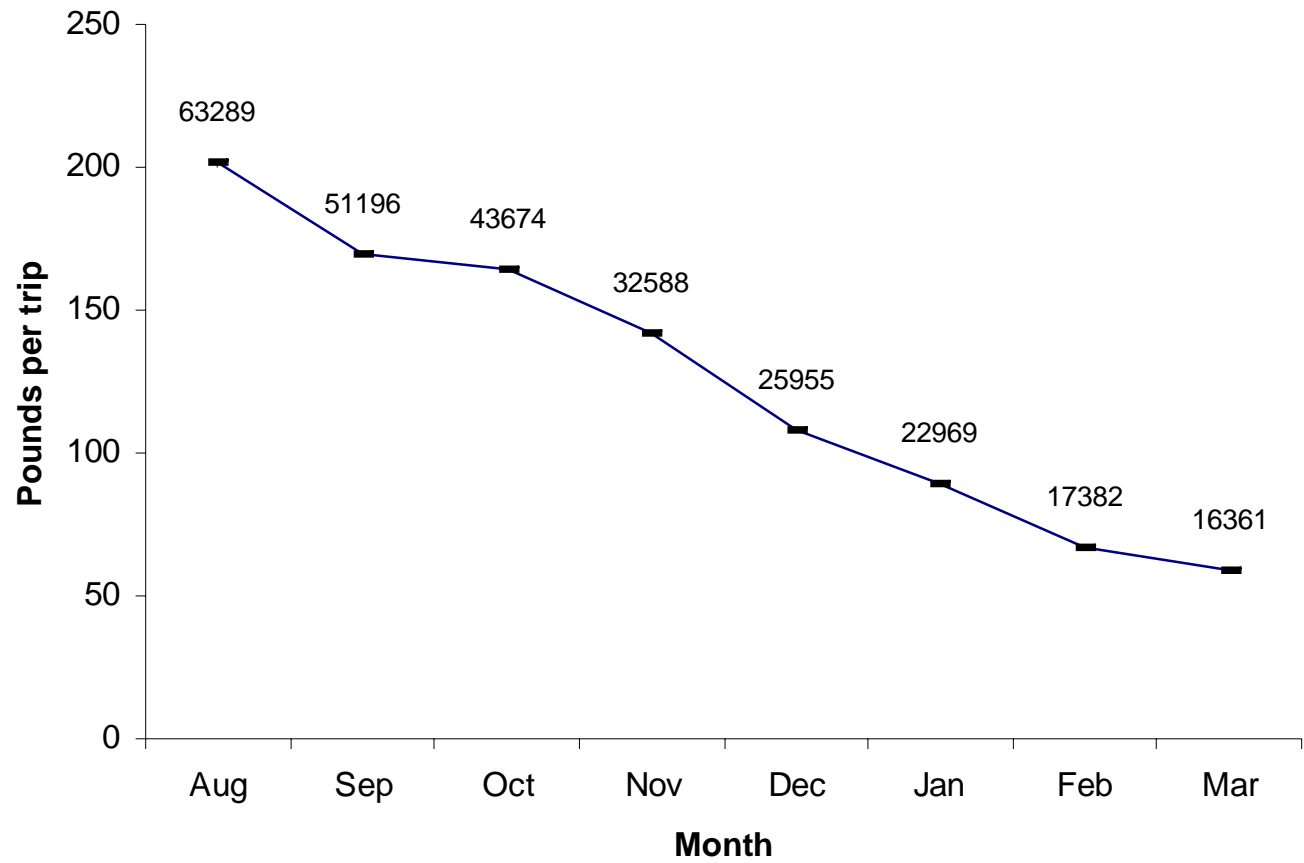
Landings by fishing year and region



Statewide landings by gear in 2003-04



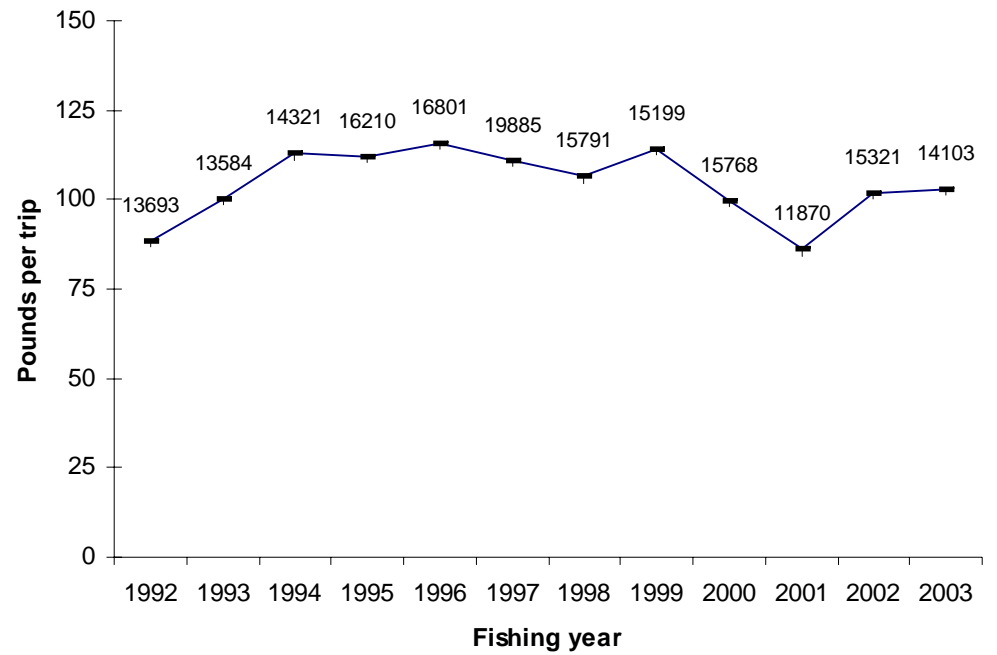
Combined gears commercial catch rates by fishing year



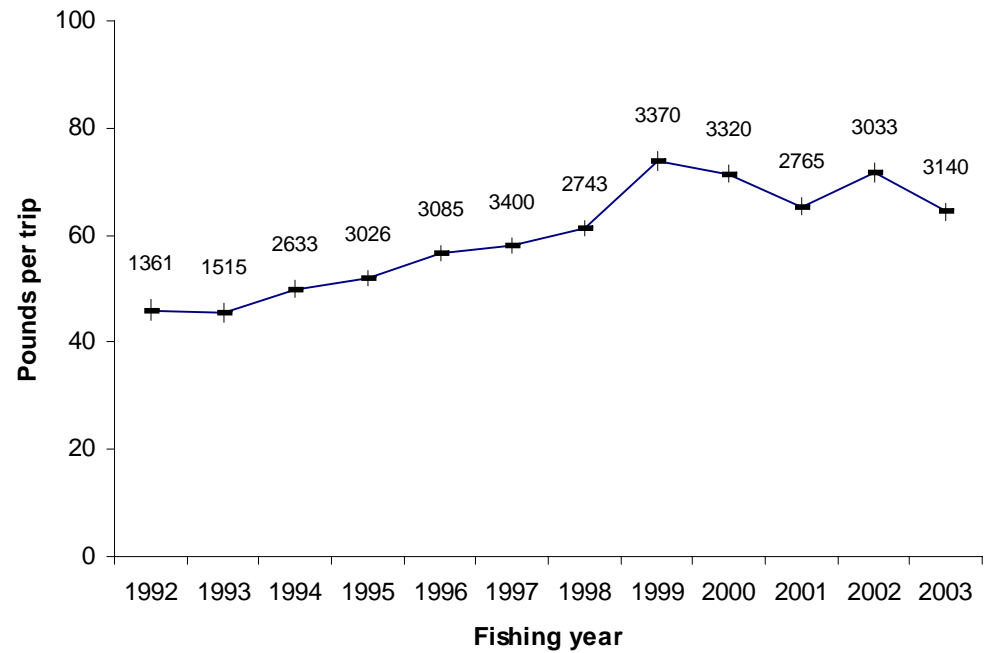
Seasonal commercial catch rates for combined gears

Traps

Commercial catch rates by major gear

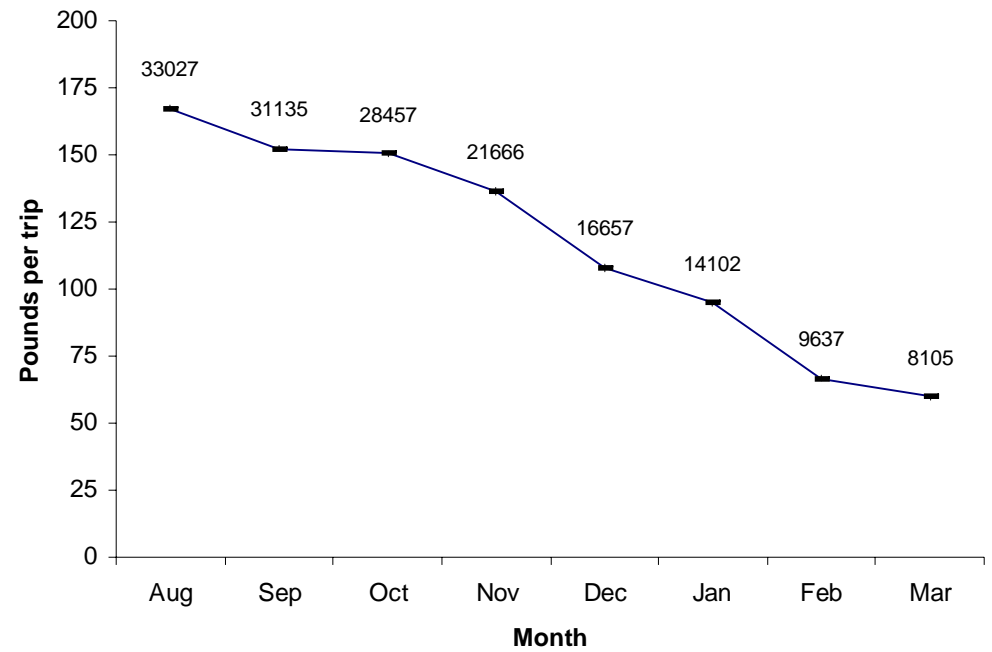


Divers

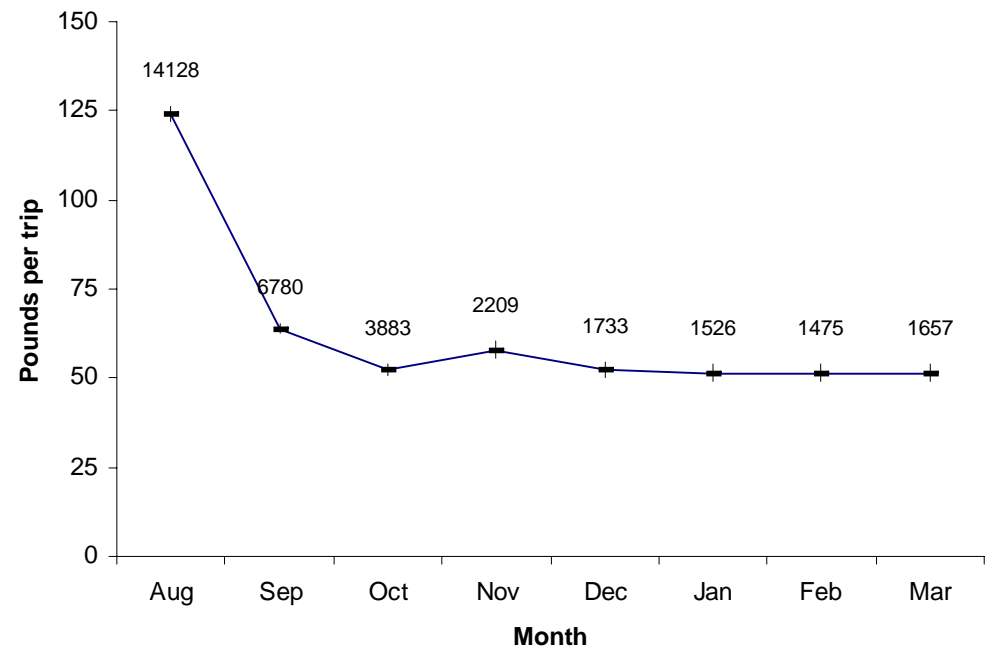


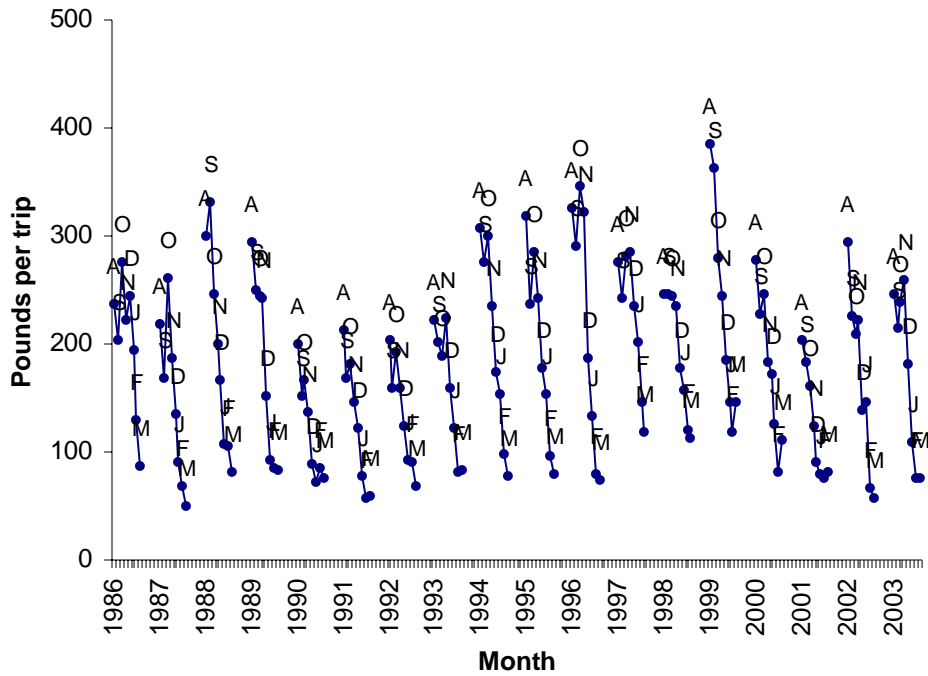
Seasonal catch rates by gear

Traps



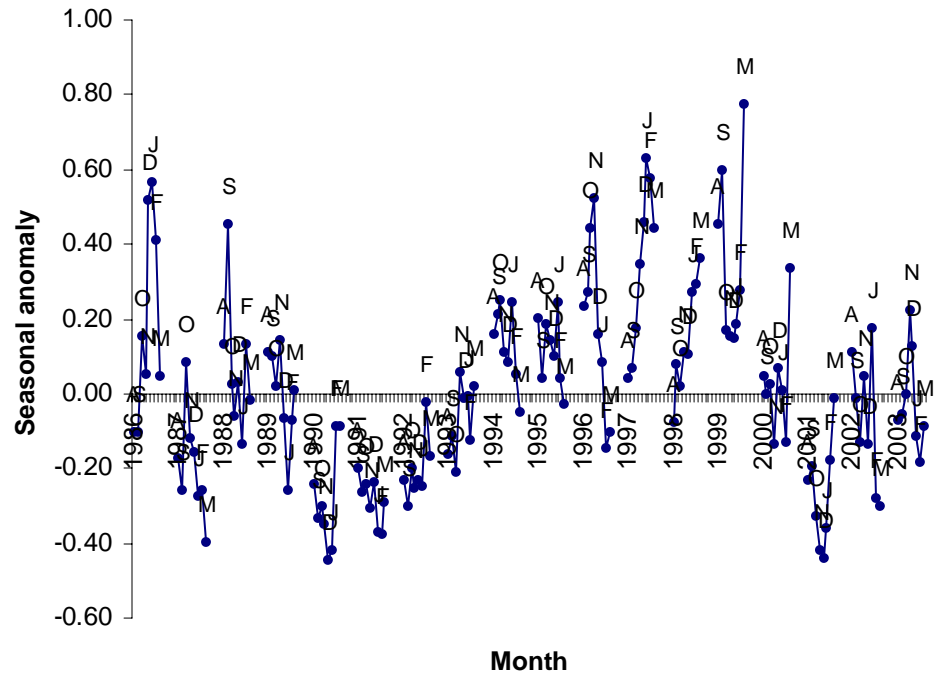
Divers





Monthly catch rates by fishing year

Detrended monthly catch rates



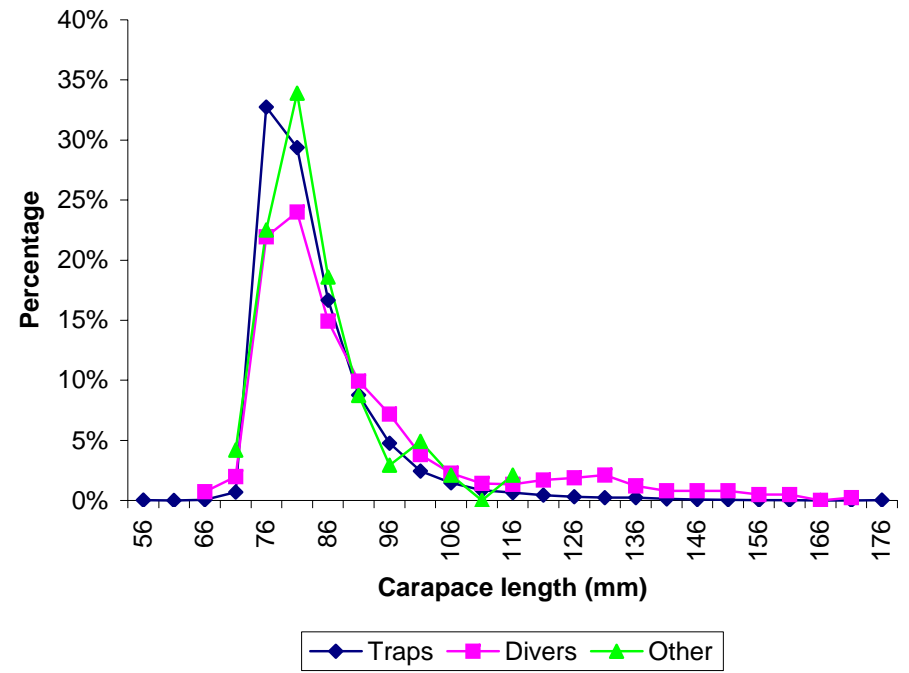
Numbers of lobsters measured by TIP by fishing year, gear, and sex

Fishing year	Traps			Divers			Other		
	Females	Males	Unknown	Females	Males	Unknown	Females	Males	Unknown
1985	1448	1531	255	14	20
1986	1582	1812	7	30	20
1987	1403	1316
1988	3304	3743
1989	3206	3309	.	31	30	.	.	1	.
1990	1923	2095	3
1991	2253	2544	15	74	100	.	49	48	.
1992	3384	3392	8	16	27	.	.	.	1
1993	1922	2464	1	208	258	.	.	.	2
1994	2915	3326	.	109	137	.	51	53	.
1995	2302	2314	.	151	166	130	.	.	.
1996	2677	2804	.	261	326
1997	2695	3497	2	225	279
1998	2686	3120	.	453	427	65	23	24	.
1999	4491	5668	3	550	812	.	68	69	.
2000	4698	5053	.	344	404	.	34	56	.
2001	5933	6083	4	741	872	.	49	77	.
2002	6368	6979	1	678	820	1	45	47	.
2003	8521	9400	115	386	444	.	25	32	5
	63711	70450	414	4271	5142	196	344	407	8

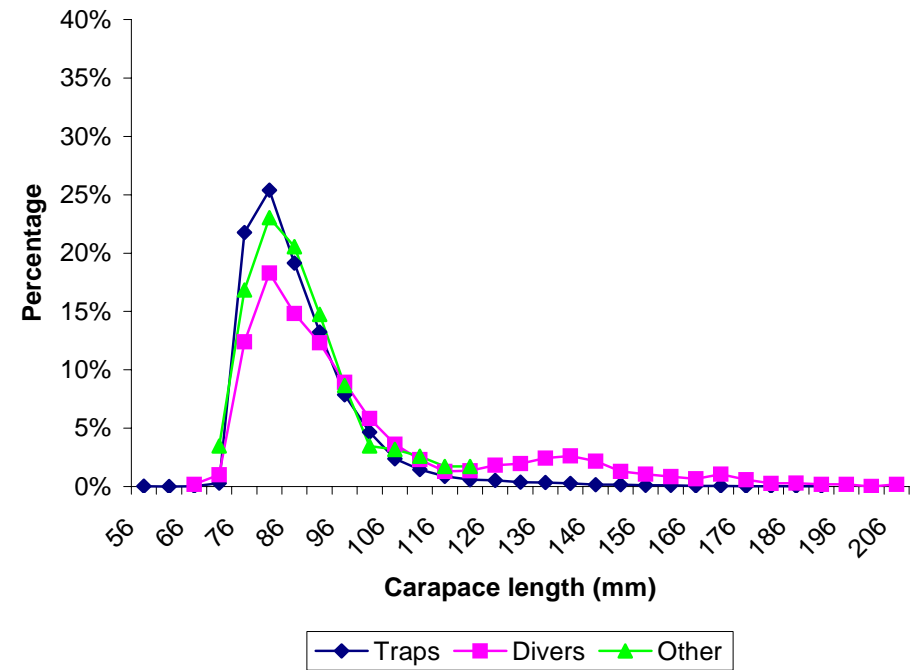
Females

Sizes of lobsters from commercial fishery

Average 1993-94 through 2003-04



Males



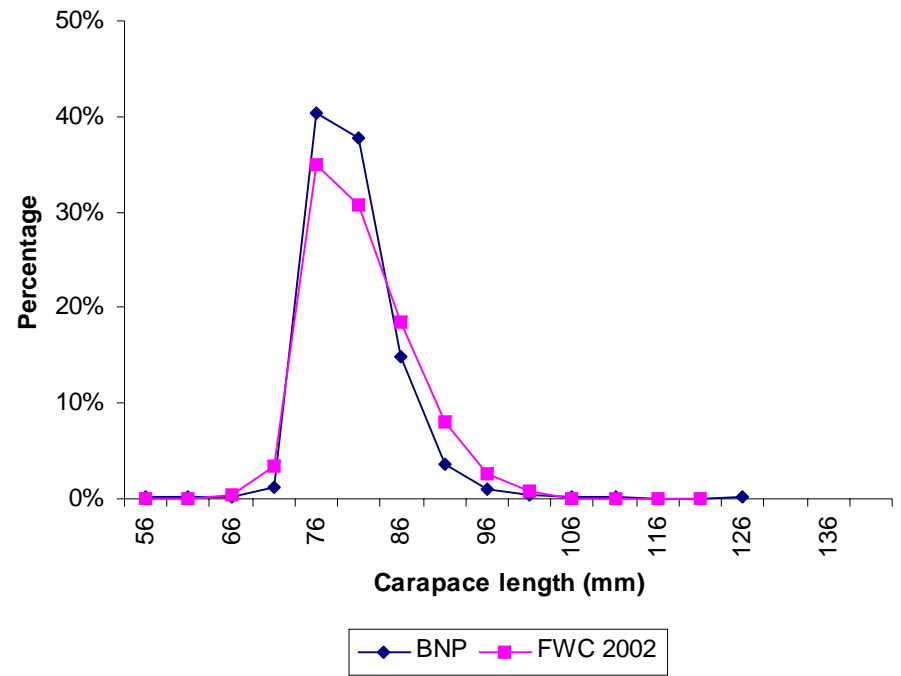
Females

Sizes of lobster from recreational fishery

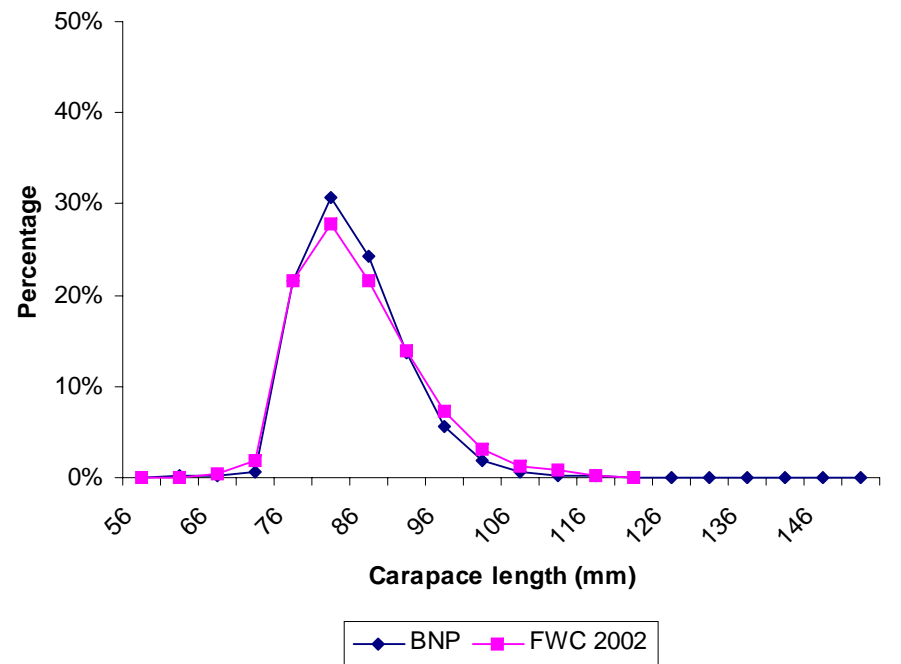
Biscayne National Park

Average 1993-94 through 2003-04

FWC 2002

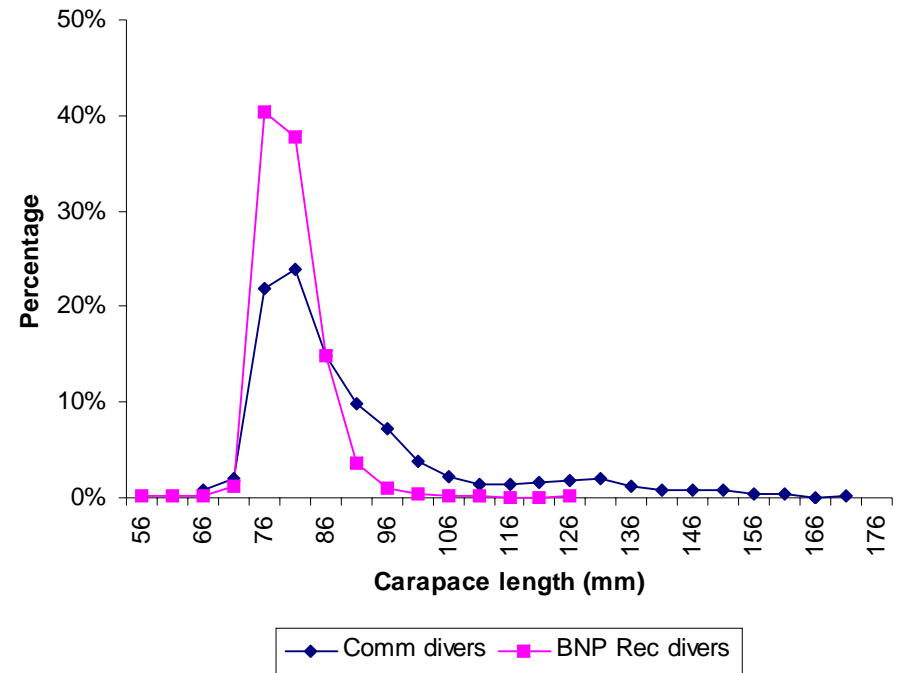


Males



Females

Comparison of sizes of lobsters captured by commercial divers and recreational divers



Males

