

# FSO

## "Gateway to Decisions"

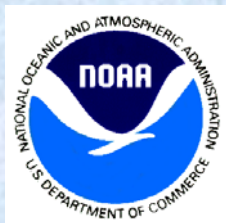
Making decisions that affect thousands of individuals, families and businesses is serious business. Collecting data that support those decisions is FSO's business. With thousands of vessels and dealers from Maine to North Carolina, the responsibility is far reaching and highly challenging. Assembling and analyzing these data is the cornerstone of fisheries management.

### That's FSO.

*In the Field* and *In the Office* helping NOAA and industry steer a steady course.

For more information visit our website:

[www.nero.noaa.gov/fso](http://www.nero.noaa.gov/fso)



# Fisheries Statistics Office

| FIELD OFFICES    | CONTACTS                                  |
|------------------|---|
| Portland, ME     | Scott McNamara<br>207-780-3322            |
| Gloucester, MA   | Don Mason<br>978-281-9363                 |
| New Bedford, MA  | John Mahoney<br>508-984-0063              |
| Chatham, MA      | Lorraine Spenle<br>508-945-5961           |
| Point Judith, RI | Walter Anoushian<br>401-783-7797          |
| East Hampton, NY | Erik Braun<br>631-324-3569                |
| Patchogue, NY    | David McKernan<br>631-475-6988            |
| Riverhead, NY    | Kristin Knobloch<br>631-727-7850 Ext. 315 |
| Toms River, NJ   | Joanne Pellegrino<br>732-349-3533         |
| Cape May, NJ     | Walter Makowski<br>609-884-2113           |
| Delaware         | Ingo Fleming<br>609-884-2113              |
| Ocean City, MD   | George Mattingly<br>757-723-3369          |
| Hampton, VA      | David Ulmer<br>757-723-3369               |

NOAA / NMFS

Northeast Fisheries

Fisheries Statistics Office

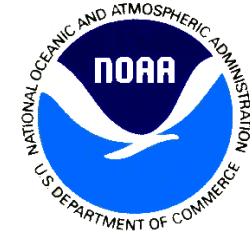
One Blackburn Drive

Gloucester, MA 01930

(978) 281-9300



## Tilefish



## Sampling Program



F/V Kimberly offloads tilefish on Long Island

# "Gateway to Decisions"

# BIOLOGICAL SAMPLING PROGRAM

## "Gateway to Decisions"

The **Fisheries Statistics Office (FSO)** is a key component of **NOAA Fisheries** in the northeast. One of the office's primary functions is to collect fishery data and biological samples. These data are essential to the fishery management process.

Both in the field and in the office, FSO works to provide our customers, other NOAA fisheries groups, fishing industry, and other constituents with accurate, reliable and timely data. **FSO** operates 11 field offices covering states from Maine to Virginia. Each office is staffed with knowledgeable personnel who serve as the agency's front line to the fishing industry.

Under the direction of John Witzig, Ph.D., FSO's central office is located in the NOAA Regional Office in Gloucester, Massachusetts.

*For more information visit our website:*

[www.nero.noaa.gov/fso](http://www.nero.noaa.gov/fso)



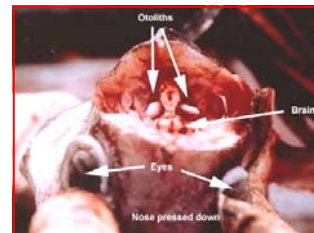
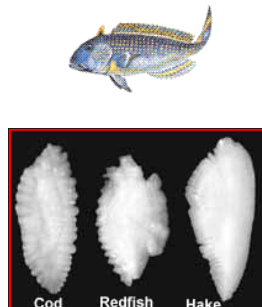
Packing out tilefish on Long Island



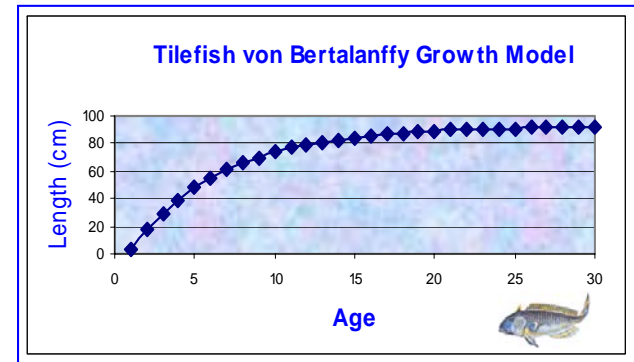
NOAA field staff, Tara Froehlich, displays a tilefish that she just measured. Measuring marine fish helps scientists determine age and growth patterns

**What We Do and How:** The mission of the sampling program is to obtain raw data essential to understanding the ages and the size distributions of individual stocks of marine fish. Field work provides the biological foundation for many fisheries assessments. Biological data, which is collected in the field, are used in models designed to guide management decisions and future research.

The ages of tilefish and many other marine fishes are determined by measuring and extracting *otoliths* from the head - commonly called ear bones. Otoliths contain growth rings which are counted much the same as counting rings on a tree stump. Each ring usually represents one year. Other species, such as flounders are aged using *scales* which also contain growth rings.



Notice the two white "ear bones" or otoliths located just behind the brain.



**Age and Growth:** The graph above and the table below illustrate growth rates of **Tilefish**. During the first nine years the growth rate is aggressive. After year 9 the growth rate slows down considerably.

| Tilefish |             |             |
|----------|-------------|-------------|
| Age      | Length (cm) | Weight (kg) |
| 1        | 3           | 0.0         |
| 2        | 17          | 0.1         |
| 3        | 29          | 0.3         |
| 4        | 39          | 0.8         |
| 5        | 48          | 1.5         |
| 6        | 55          | 2.3         |
| 7        | 61          | 3.3         |
| 8        | 66          | 4.2         |
| 9        | 70          | 5.2         |
| 10       | 74          | 6.1         |
| 11       | 77          | 6.9         |
| 12       | 79          | 7.7         |
| 13       | 81          | 8.4         |
| 14       | 83          | 9.0         |
| 15       | 85          | 9.6         |
| 16       | 86          | 10.0        |