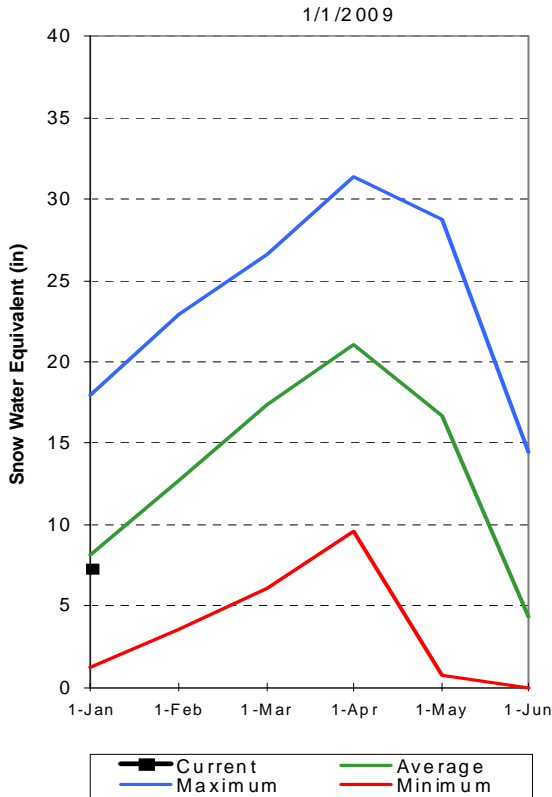


# Utah Lake, Jordan River & Tooele Valley Basins

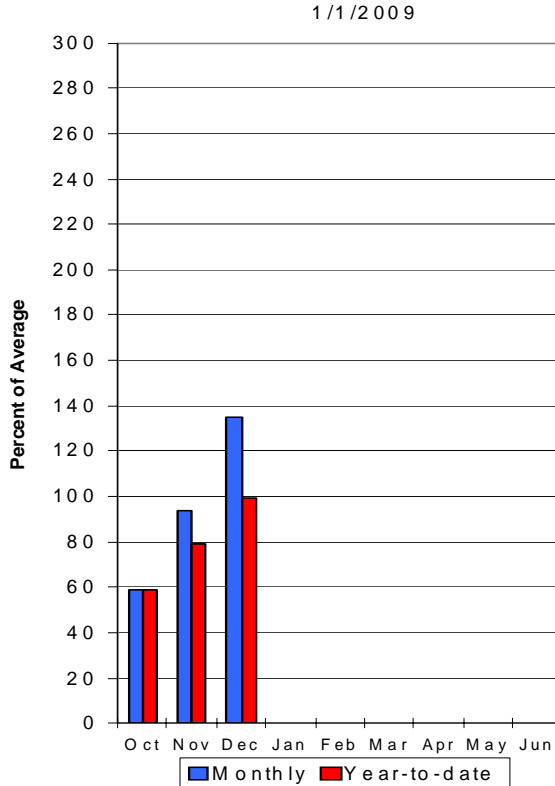
## January 1, 2009

Snowpack over these basins are near average at 90%, which is 102% of last year. Individual sites range from 62% at Dry Fork Snotel, to 131% of average at the Snowbird Snotel. December precipitation was above average at 135%, bringing the seasonal accumulation (Oct-Dec) to 99% of average. Average soil moisture in runoff producing areas is estimated at 39% of saturation in the upper 2 feet of soil compared to 37% at this time last year. Reservoir storage is at 81% of capacity, 3% higher than last year. Streamflow forecasts (Apr-July) range from 81% to 95% of average. The Surface Water Supply Index is at 45%, indicating general water supply conditions are near normal.

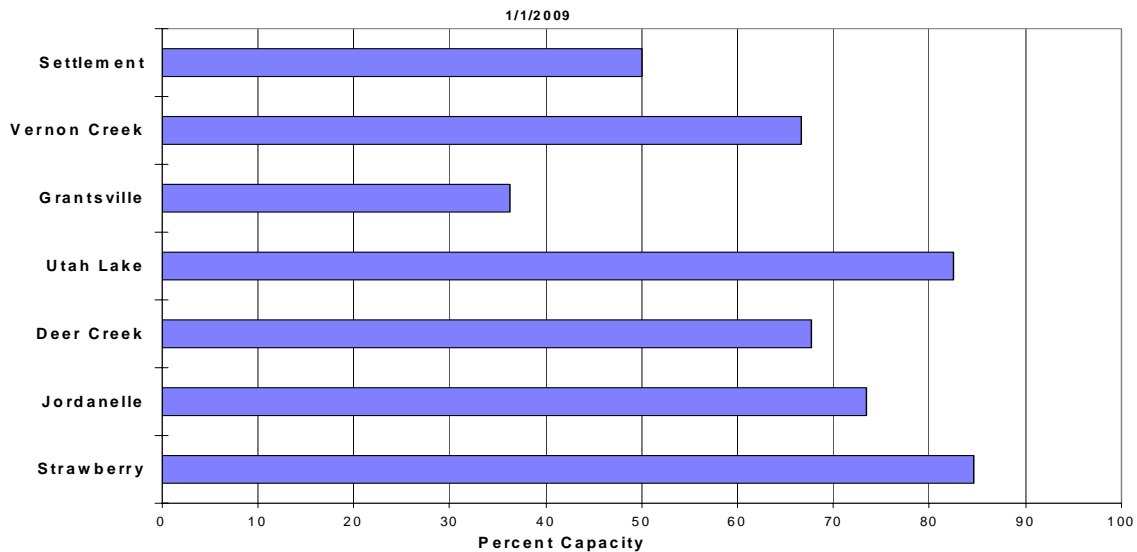
**Provo River Snowpack**



**Provo River Precipitation**



**Reservoir Storage**



UTAH LAKE, JORDAN RIVER & TOOELE VALLEY  
Streamflow Forecasts - January 1, 2009

Forecast Point	Forecast Period	Future Conditions						30-Yr Avg. (1000AF)
		<<==== Drier =====		===== Chance Of Exceeding * 50% (1000AF) (% AVG.)		===== Wetter =====>>		
		90% (1000AF)	70% (1000AF)			30% (1000AF)	10% (1000AF)	
Spanish Fk at Castilla, UT	APR-JUL	2.3	32	62	81	92	136	77
Provo River nr Woodland	APR-JUL	50	72	90	87	109	142	103
Provo River nr Hailstone	APR-JUL	56	80	98	90	118	151	109
Provo R blw Deer Ck Dam, UT	APR-JUL	42	84	112	89	140	181	126
American Fk abv Upper Powerplant	APR-JUL	7.4	19.6	28	88	36	49	32
Utah Lake inflow	APR-JUL	91	204	280	86	356	469	325
W Canyon Ck nr Cedar Fort, UT	APR-JUL	0.59	1.49	2.10	88	2.70	3.60	2.40
Little Cottonwood Ck nr SLC	APR-JUL	24	32	38	95	45	55	40
Big Cottonwood Ck nr SLC, UT	APR-JUL	24	31	36	95	41	48	38
Mill Ck nr SLC, UT	APR-JUL	3.00	4.80	6.10	87	7.40	9.20	7.00
Parleys Ck nr SLC, UT	APR-JUL	4.4	10.4	14.5	87	18.6	25	16.7
Dell Fork nr SLC, UT	APR-JUL	0.41	3.30	5.80	85	8.30	12.00	6.80
Emigration Ck nr SLC, UT	APR-JUL	0.18	2.20	3.70	82	5.20	7.40	4.50
City Ck nr SLC, UT	APR-JUL	2.70	5.60	7.50	86	9.40	12.30	8.70
Vernon Ck nr Vernon, UT	APR-JUL	0.03	0.75	1.30	88	1.85	2.70	1.48
Settlement Ck nr Tooele, UT	APR-JUL	0.13	1.02	1.80	86	2.60	3.70	2.10
South Willow Ck nr Grantsville, UT	APR-JUL	1.43	2.40	3.00	93	3.60	4.60	3.23

UTAH LAKE, JORDAN RIVER & TOOELE VALLEY  
Reservoir Storage (1000 AF) - End of December

UTAH LAKE, JORDAN RIVER & TOOELE VALLEY  
Watershed Snowpack Analysis - January 1, 2009

Reservoir	Usable Capacity	*** Usable Storage ***			Watershed	Number of Data Sites	This Year as % of Last Yr	Average
		This Year	Last Year	Avg				
DEER CREEK	149.7	101.3	63.4	102.0	PROVO RIVER & UTAH LAKE	7	98	89
GRANTSVILLE	3.3	1.2	1.3	1.6	PROVO RIVER	4	103	95
SETTLEMENT CREEK	1.0	0.5	0.5	0.5	JORDAN RIVER & GREAT SALT	6	101	92
STRAWBERRY-ENLARGED	1105.9	936.0	874.5	640.0	TOOELE VALLEY WATERSHEDS	3	100	86
UTAH LAKE	870.9	719.0	731.3	756.5	UTAH LAKE, JORDAN RIVER &	16	99	90
VERNON CREEK	0.6	0.4	0.4	---				

\* 90%, 70%, 50%, 30%, and 10% chances of exceeding are the probabilities that the actual volume will exceed the volumes in the table.

The average is computed for the 1971-2000 base period.

- (1) - The values listed under the 10% and 90% Chance of Exceeding are actually 5% and 95% exceedance levels.
- (2) - The value is natural volume - actual volume may be affected by upstream water management.